

March 11, 2019

Ms. Nina Ruiz
El Paso County Community Services Department
Planning Division
2880 International Circle, Suite 110
Colorado Springs, CO 80910

Subject: Widefield Water and Sanitation District – Drinking Water Mitigation System, Project Summary

Dear Ms. Ruiz,

The United States Army Corps of Engineers (USACE) retained URS Group, inc (an AECOM company) to design and construct a Perflurinated Compound and Per-and Polyfluoralkyl Substances (PFC/PFAS) groundwater drinking water mitigation system (DWMS) for Widefield Water and Sanitation District (WWSD). As part of this project, the discharge from existing permitted and operational groundwater wells will be piped to a raw water collection pipeline. The raw water pipeline will convey well water to the Drinking Water Mitigation Facility where it will pass through processes including pre-filtration, ion exchange, and a disinfection process in a dedicated pipeline and then will discharge to the existing distribution system.

URS Group, Inc. (URS), an AECOM Company, is working with the USACE and WWSD to design and construct the project.

The project area is located in the southwestern part of Security-Widefield, Colorado. It is in Section 24 of Township 15 South, Range 66 West, 6th Principal Meridian (P.M.) and is depicted on the Fountain, Colorado, 7.5-minute U.S. Geological Survey topographic quadrangle map (USGS 1969). The project area includes approximately 1,600 feet of proposed pipeline corridor between Southmoor Drive and Highway 85, and an additional 1,000 feet of proposed pipeline corridor east of U.S. Highway 85. The study area includes three proposed crossings of Crews Gulch, two west of U.S. Highway 85 and one east of the highway. The width of the study area varies from 75 to 100 feet.

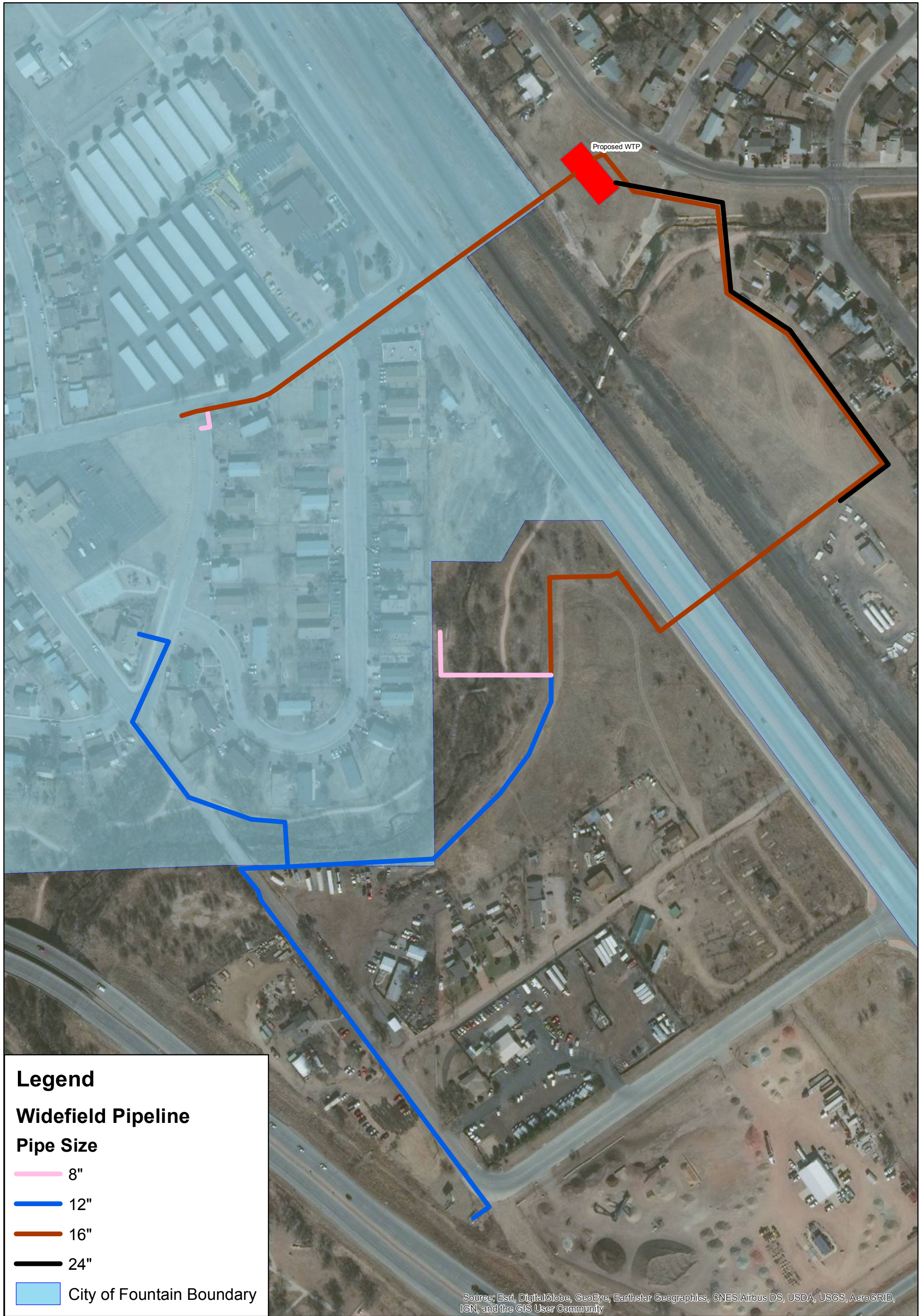
Sincerely,



Bill Wemmert, PE

Attachments

Attachment A – Project Area for the Widefield Water and Sanitation District Drinking Water Mitigation System



Widefield Pipeline Widefield, Colorado

0 70 140 280 Feet



3/4/2019

1 inch = 179 feet