

Reviewed by
dsdgrimm
03/27/2019 2:09:25 PM

March 11, 2019

Ms. Nina Ruiz
El Paso County Community Services Department
Planning Division
2880 International Circle, Suite 110
Colorado Springs, CO 80910

Subject: Widefield Water and Sanitation District Drinking Water Mitigation System, Grading and Erosion Control Plan

Dear Ms. Ruiz,

AECOM was retained by the United States Army Corp of Engineers to perform the design and construction of the Drinking Water Mitigation System for the Widefield Water and Sanitation District, Colorado Springs, Colorado. Please see Project Summary and Construction Drawings for additional project details. The following is the grading and erosion control plan for construction.

Grading and Erosion Control Plan

The Grading and Erosion Control (GEC) Plan will be prepared by a Professional Engineer in accordance with Best Management Practices. Attachment A includes the Grading Plan prepared for the Drinking Water Mitigation Facility.

Erosion and sediment control structures will be in place and functional before earth moving activities begin. Erosion, sediment, and stormwater control features will remain in place until permanent vegetation is established over disturbed surfaces.

The GEC plan shall include items listed in the El Paso County Engineering Criteria Manual - Grading and Erosion Control Plan Submittal Checklist.

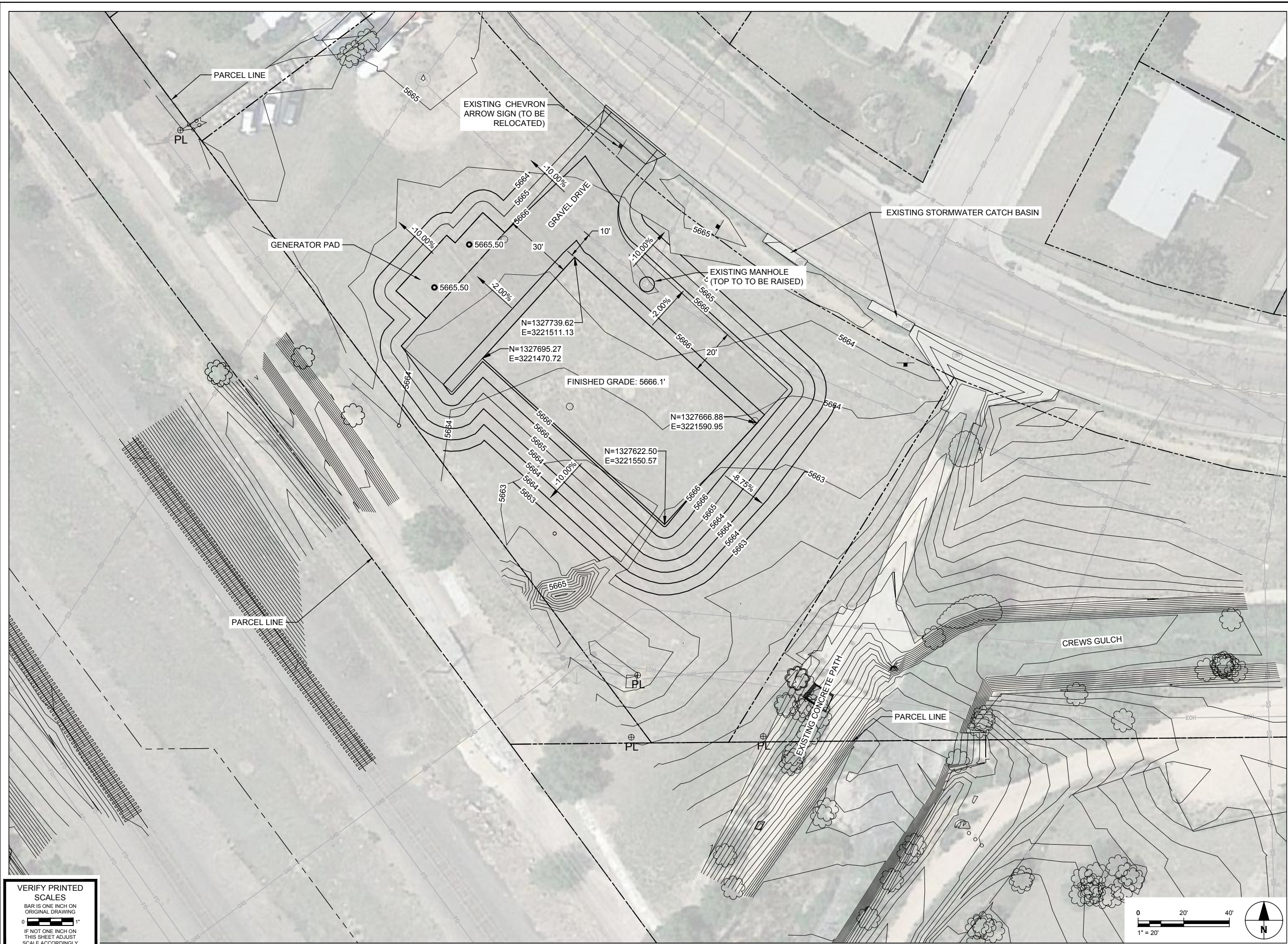
Sincerely,

Bill Wemmert

Refer to the El Paso County Engineering Criteria Manual, Appendix E for the Grading and Erosion Control (GEC) Plan checklist. The GEC Plan must include all items in the checklist.


Attachments

Attachment A – Grading Plan



**VERIFY PRINTED
SCALES**

BAR IS ONE INCH ON
ORIGINAL DRAWING

0  1"

IF NOT ONE INCH ON
THIS SHEET ADJUST
SCALE ACCORDINGLY