

COUNTY OF EL PASO, STATE OF COLORADO

APRIL 2017

GENERAL CONSTRUCTION NOTES:

1. IT SHALL BE THE RESPONSIBILITY OF THE CONTRACTOR TO VERIFY THE EXISTENCE AND LOCATION OF ALL UNDERGROUND UTILITIES ALONG THE ROUTE OF THE WORK. THE OMISSION FROM OR THE INCLUSION OF UTILITY LOCATIONS ON THE PLANS IS NOT TO BE CONSIDERED AS THE NEGLIGENCE OF OR A DEFINITE LOCATION OF ANY UNDERGROUND UTILITIES.
2. THE CONTRACTOR WILL TAKE THE NECESSARY PRECAUTIONS TO PROTECT EXISTING UTILITIES FROM DAMAGE DUE TO THIS OPERATION. ANY DAMAGE TO THE UTILITIES WILL BE REPAIRED AT THE CONTRACTOR'S EXPENSE, AND ANY SERVICE DISRUPTION WILL BE SETTLED BY THE CONTRACTOR.
3. ADDITIONAL EROSION CONTROL STRUCTURES MAY BE REQUIRED AT THE TIME OF CONSTRUCTION.
4. ALL BACKFILL, SUB-BASE AND/OR BASE COURSE (CLASS B) MATERIAL SHALL BE COMPACTED TO THE SOILS ENGINEER'S RECOMMENDATIONS, AND APPROVED BY EL PASO COUNTY DEVELOPMENT SERVICES ENGINEERING DIVISION.
5. TYPE L RIP-RAP WITH MIRAFI FW 700 OR EQUAL IS REQUIRED UNDER ALL RIP-RAP PADS.
6. ALL MATERIALS AND INSTALLATION PROCEDURES SHALL BE IN COMPLIANCE WITH ANY AND ALL APPLICABLE EL PASO COUNTY STANDARDS.

EL PASO COUNTY GRADING AND EROSION CONTROL NOTES:

1. CONSTRUCTION MAY NOT COMMENCE UNTIL A CONSTRUCTION PERMIT IS OBTAINED FROM "PLANNING AND COMMUNITY DEVELOPMENT" INSPECTIONS AND A PRECONSTRUCTION CONFERENCE IS HELD WITH "PLANNING AND COMMUNITY DEVELOPMENT" INSPECTIONS.
2. STORMWATER DISCHARGES FROM CONSTRUCTION SITES SHALL NOT BE CAUSE OR THREATEN TO CAUSE POLLUTION, CONTAMINATION, OR DEGRADATION OF STATE WATERS. ALL WORK AND EARTH DISTURBANCE SHALL BE DONE IN A MANNER THAT MINIMIZES POLLUTION OF ANY ON-SITE OR OFF SITE WATERS, INCLUDING WETLANDS.
3. NOTWITHSTANDING ANYTHING DEPICTED IN THESE PLANS IN WORDS OR GRAPHIC REPRESENTATION, ALL DESIGN AND CONSTRUCTION RELATED TO ROADS, STORM DRAINAGE AND EROSION CONTROL SHALL CONFORM TO THE STANDARDS AND REQUIREMENTS OF THE MOST RECENT VERSION OF THE RELEVANT ADOPTED EL PASO COUNTY STATUTES INCLUDING THE LAND DEVELOPMENT CODE, THE ENGINEERING CRITERIA MANUAL, THE DRAINAGE CRITERIA MANUAL AND THE DRAINAGE CRITERIA MANUAL VOLUME 2. ANY DEVIATIONS TO REGULATIONS AND STANDARDS MUST BE REQUESTED, AND APPROVED, IN WRITING.
4. A SEPARATE STORMWATER MANAGEMENT PLAN (SWMP) FOR THIS PROJECT SHALL BE COMPLETED AND AN EROSION AND STORMWATER QUALITY CONTROL PERMIT (ESQCP) ISSUED PRIOR TO COMMENCING CONSTRUCTION. DURING CONSTRUCTION THE SWMP IS THE RESPONSIBILITY OF THE DESIGNATED STORMWATER MANAGER, SHALL BE LOCATED ON SITE AT ALL TIMES AND SHALL BE KEPT UP TO DATE WITH WORK PROGRESS AND CHANGES IN THE FIELD.
5. ONCE THE ESQCP HAS BEEN ISSUED, THE CONTRACTOR MAY INSTALL THE INITIAL STAGE EROSION AND SEDIMENT CONTROL BMPs AS INDICATED ON THE QEC. A PRECONSTRUCTION MEETING BETWEEN THE CONTRACTOR, ENGINEER, AND EL PASO COUNTY WILL BE HELD PRIOR TO ANY CONSTRUCTION. IT IS THE RESPONSIBILITY OF THE APPLICANT TO COORDINATE THE MEETING TIME AND PLACE WITH COUNTY "PLANNING AND COMMUNITY DEVELOPMENT" INSPECTIONS STAFF.
6. SOIL EROSION CONTROL MEASURES FOR ALL SLOPES, CHANNELS, DITCHES, OR ANY DISTURBED LAND AREA SHALL BE COMPLETED WITHIN 21 CALENDAR DAYS AFTER FINAL GRADING, OR FINAL EARTH DISTURBANCE, HAS BEEN COMPLETED. DISTURBED AREAS AND STOCKPILES WHICH ARE NOT AT FINAL GRADE BUT WILL REMAIN DORMANT FOR LONGER THAN 30 DAYS SHALL ALSO BE MULCHED WITHIN 21 DAYS AFTER INTERIM GRADING. AN AREA THAT IS GOING TO REMAIN IN AN INTERIM STATE FOR MORE THAN 60 DAYS SHALL ALSO BE SEEDED. ALL TEMPORARY SOIL EROSION CONTROL MEASURES AND BMPs SHALL BE MAINTAINED UNTIL PERMANENT SOIL EROSION CONTROL MEASURES ARE IMPLEMENTED AND ESTABLISHED.
7. TEMPORARY SOIL EROSION CONTROL FACILITIES SHALL BE REMOVED AND EARTH DISTURBANCE AREAS GRADED AND STABILIZED WITH PERMANENT SOIL EROSION CONTROL MEASURES PURSUANT TO STANDARDS AND SPECIFICATION PRESCRIBED IN THE DCM VOLUME II AND THE ENGINEERING CRITERIA MANUAL (ECM) APPENDIX I.
8. ALL PERSONS ENGAGED IN EARTH DISTURBANCE SHALL IMPLEMENT AND MAINTAIN ACCEPTABLE SOIL EROSION AND SEDIMENT CONTROL MEASURES INCLUDING BMPs IN CONFORMANCE WITH THE EROSION CONTROL TECHNICAL STANDARDS OF THE DRAINAGE CRITERIA MANUAL (DCM) VOLUME II AND IN ACCORDANCE WITH THE STORMWATER MANAGEMENT PLAN (SWMP).
9. ALL TEMPORARY EROSION CONTROL FACILITIES INCLUDING BMPs AND ALL PERMANENT FACILITIES INTENDED TO CONTROL EROSION OF ANY EARTH DISTURBANCE OPERATIONS, SHALL BE INSTALLED AS DEFINED IN THE APPROVED PLANS, THE SWMP AND THE DCM VOLUME II AND MAINTAINED THROUGHOUT THE DURATION OF THE EARTH DISTURBANCE OPERATION.
10. ANY EARTH DISTURBANCE SHALL BE CONDUCTED IN SUCH A MANNER SO AS TO EFFECTIVELY REDUCE ACCELERATED SOIL EROSION AND RESULTING SEDIMENTATION. ALL DISTURBANCES SHALL BE DESIGNED, CONSTRUCTED, AND COMPLETED SO THAT THE EXPOSED AREA OF ANY DISTURBED LAND SHALL BE LIMITED TO THE SHORTEST PRACTICAL PERIOD OF TIME.
11. ANY TEMPORARY OR PERMANENT FACILITY DESIGNED AND CONSTRUCTED FOR THE CONVEYANCE OF STORMWATER AROUND, THROUGH, OR FROM THE EARTH DISTURBANCE AREA SHALL BE DESIGNED TO LIMIT THE DISCHARGE TO A NON-EROSIVE VELOCITY.
12. CONCRETE WASH WATER SHALL BE CONTAINED AND DISPOSED OF IN ACCORDANCE WITH THE SWMP. NO WASH WATER SHALL BE DISCHARGED TO OR ALLOWED TO RUNOFF TO STATE WATERS, INCLUDING ANY SURFACE OR SUBSURFACE STORM DRAINAGE SYSTEM OR FACILITIES.
13. EROSION CONTROL BLANKETING IS TO BE USED ON SLOPES STEEPER THAN 3:1.
14. BUILDING, CONSTRUCTION, EXCAVATION, OR OTHER WASTE MATERIALS SHALL NOT BE TEMPORARILY PLACED OR STORED IN THE STREET, ALLEY, OR OTHER PUBLIC RIGHT-OF-WAY UNLESS IN ACCORDANCE WITH APPROVED TRAFFIC CONTROL PLAN. BMPs MAY BE REQUIRED BY EL PASO COUNTY ENGINEERING IF DEEMED NECESSARY, BASED ON SPECIFIC CONDITIONS AND CIRCUMSTANCES.
15. VEHICLE TRACKING OF SOILS AND CONSTRUCTION DEBRIS OFF-SITE SHALL BE MINIMIZED. MATERIALS TRACKED OFFSITE SHALL BE CLEANED UP AND PROPERLY DISPOSED OF IMMEDIATELY.
16. CONTRACTOR SHALL BE RESPONSIBLE FOR THE REMOVAL OF ALL WASTES FROM THE CONSTRUCTION SITE FOR DISPOSAL IN ACCORDANCE WITH LOCAL AND STATE REGULATORY REQUIREMENTS. NO CONSTRUCTION DEBRIS, TREE SLASH, BUILDING MATERIAL WASTES OR UNUSED BUILDING MATERIALS SHALL BE BURIED, DUMPED, OR DISCHARGED AT THE SITE.
17. THE OWNER, SITE DEVELOPER, CONTRACTOR, AND/OR THEIR AUTHORIZED AGENTS SHALL BE RESPONSIBLE FOR THE REMOVAL OF ALL CONSTRUCTION DEBRIS, DIRT, TRASH, ROCK, SEDIMENT, AND SAND THAT MAY ACCUMULATE IN THE STORM SEWER OR OTHER DRAINAGE CONVEYANCE SYSTEM AND STORMWATER APPURTENANCES AS A RESULT OF SITE DEVELOPMENT.
18. THE QUANTITY OF MATERIALS STORED ON THE PROJECT SITE SHALL BE LIMITED, AS MUCH AS PRACTICAL, TO THAT QUANTITY REQUIRED TO PERFORM THE WORK IN AN ORDERLY SEQUENCE. ALL MATERIALS STORED ON-SITE SHALL BE STORED IN A NEAT, ORDERLY MANNER, IN THEIR ORIGINAL CONTAINERS, WITH ORIGINAL MANUFACTURER'S LABELS.
19. NO CHEMICALS ARE TO BE USED BY THE CONTRACTOR, WHICH HAVE THE POTENTIAL TO BE RELEASED IN STORMWATER UNLESS PERMISSION FOR THE USE OF A SPECIFIC CHEMICAL IS GRANTED IN WRITING BY THE ECM ADMINISTRATOR. IN GRANTING THE USE OF SUCH CHEMICALS, SPECIAL CONDITIONS AND MONITORING MAY BE REQUIRED.
20. BULK STORAGE STRUCTURES FOR PETROLEUM PRODUCTS AND OTHER CHEMICALS SHALL HAVE ADEQUATE PROTECTION SO AS TO CONTAIN ALL SPILLS AND PREVENT ANY SPILLED MATERIAL FROM ENTERING STATE WATERS, INCLUDING ANY SURFACE OR SUBSURFACE STORM DRAINAGE SYSTEM OR FACILITIES.
21. NO PERSON SHALL CAUSE THE IMPEDIMENT OF STORMWATER FLOW IN THE FLOW LINE OF THE CURB AND GUTTER OR IN THE DITCHLINE.
22. INDIVIDUALS SHALL COMPLY WITH THE "COLORADO WATER QUALITY CONTROL ACT" (TITLE 25, ARTICLE 8, CRS), AND THE "CLEAN WATER ACT" (33 USC 1344), IN ADDITION TO THE REQUIREMENTS INCLUDED IN THE DCM VOLUME II AND THE ECM APPENDIX I. ALL APPROPRIATE PERMITS MUST BE OBTAINED BY THE CONTRACTOR PRIOR TO CONSTRUCTION (NPDES, FLOODPLAIN, 404, FUGITIVE DUST, ETC.). IN THE EVENT OF CONFLICTS BETWEEN THESE REQUIREMENTS AND LAWS, RULES, OR REGULATIONS OF OTHER FEDERAL, STATE, OR COUNTY AGENCIES, THE MORE RESTRICTIVE LAWS, RULES, OR REGULATIONS SHALL APPLY.
23. ALL CONSTRUCTION TRAFFIC MUST ENTER/EXIT THE SITE AT APPROVED CONSTRUCTION ACCESS POINTS.
24. PRIOR TO ACTUAL CONSTRUCTION THE PERMITEE SHALL VERIFY THE LOCATION OF EXISTING UTILITIES.
25. A WATER SOURCE SHALL BE AVAILABLE ON SITE DURING EARTHWORK OPERATIONS AND UTILIZED AS REQUIRED TO MINIMIZE DUST FROM EARTHWORK EQUIPMENT AND WIND.
26. THE SOILS REPORT FOR THIS SITE HAS BEEN PREPARED BY ENTECH ENGINEERING, INC., TITLED "SOIL, GEOLOGY, GEOLOGIC HAZARD AND PRELIMINARY SUBSURFACE SOIL INVESTIGATION - WATERBURY - PHASE 1", DATED MARCH 22, 2013, AND SHALL BE CONSIDERED A PART OF THESE PLANS.
27. AT LEAST TEN DAYS PRIOR TO THE ANTICIPATED START OF CONSTRUCTION, FOR PROJECTS THAT WILL DISTURB 1 ACRE OR MORE, THE OWNER OR OPERATOR OF CONSTRUCTION ACTIVITY SHALL SUBMIT A PERMIT APPLICATION FOR STORMWATER DISCHARGE TO THE COLORADO DEPARTMENT OF PUBLIC HEALTH AND ENVIRONMENT, WATER QUALITY DIVISION. THE APPLICATION CONTAINS CERTIFICATION OF COMPLETION OF A STORMWATER MANAGEMENT PLAN (SWMP), OF WHICH THIS GRADING AND EROSION CONTROL PLAN MAY BE A PART. FOR INFORMATION OR APPLICATION MATERIALS CONTACT:

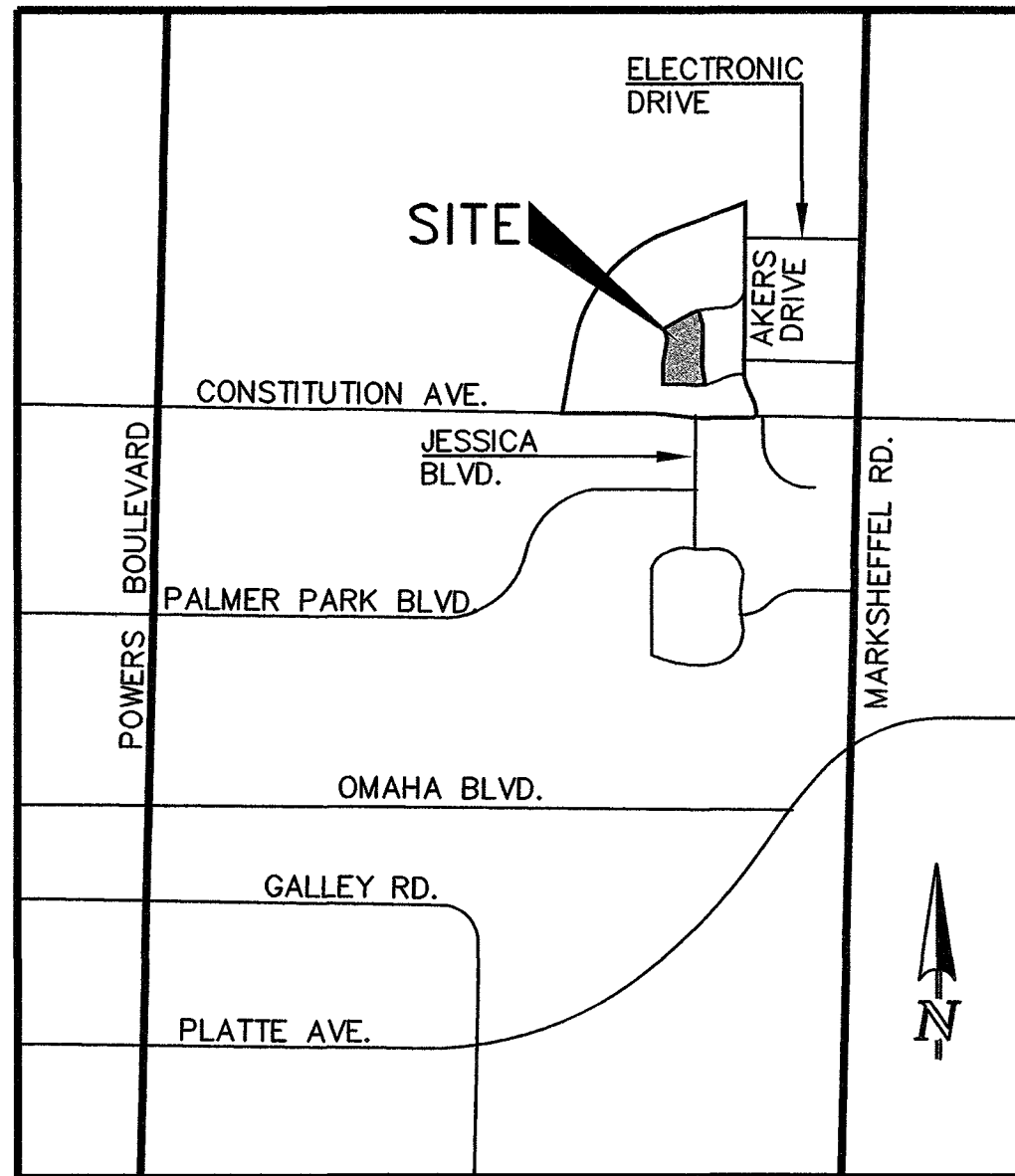
COLORADO DEPARTMENT OF PUBLIC HEALTH AND ENVIRONMENT
WATER QUALITY CONTROL DIVISION
WQCD - PERMITS
4300 CHERRY CREEK DRIVE SOUTH
DENVER, CO 80246-1530
ATTN: PERMITS UNIT

BENCHMARK:

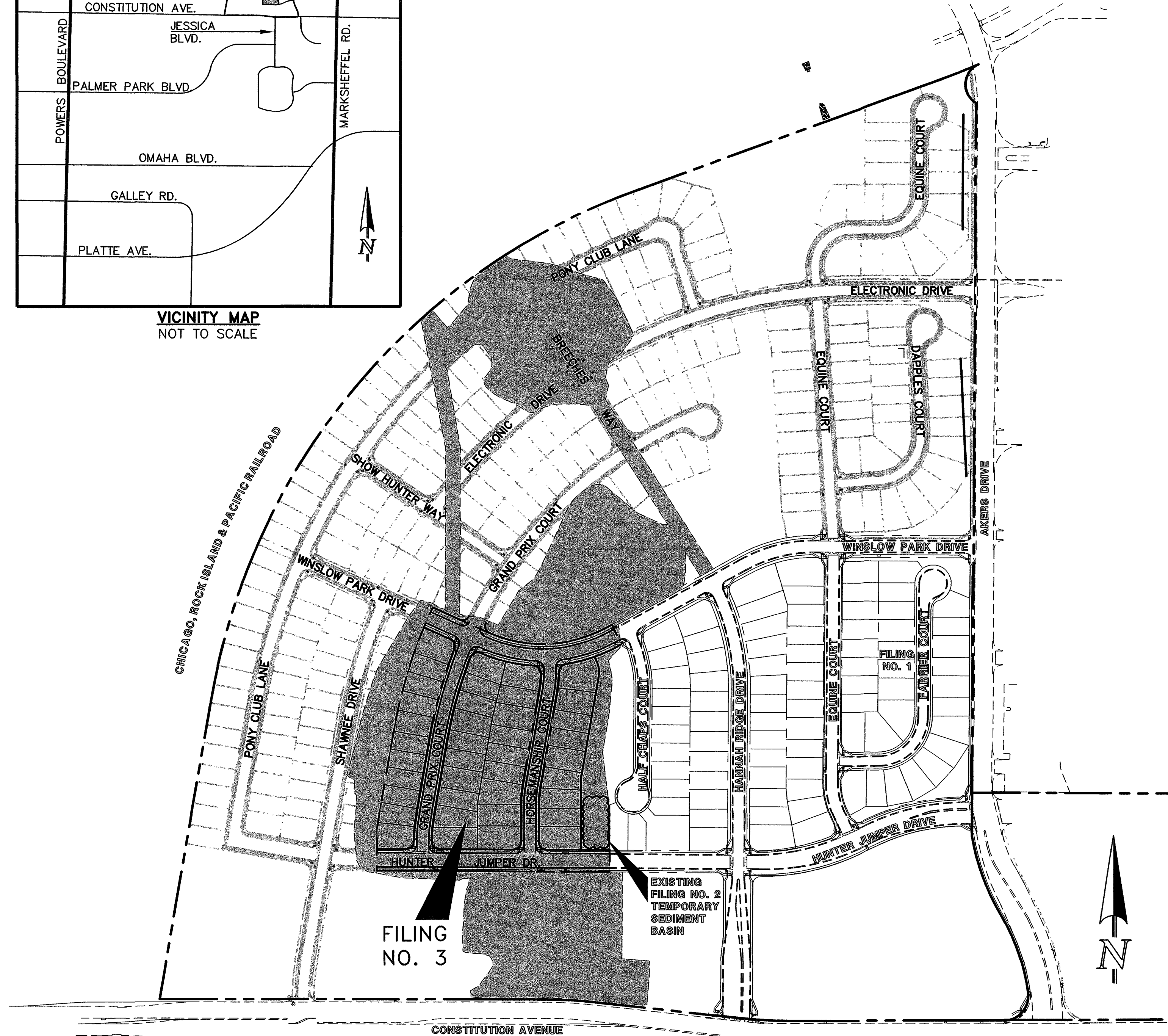
THE BENCHMARK FOR THESE PLANS IS THE TOP OF #4 REBAR, PANEL POINT NO. 1, LOCATED ON THE SOUTH EDGE OF CONSTITUTION AVE. AND THE WEST EDGE OF THE ROCK ISLAND TRAIL, 535 FEET WEST OF THE CENTERLINE OF SHAWNEE DR.
ELEVATION = 6486.63 (EPC DATUM ELEVATION = 6485.29)

BASIS OF BEARINGS:



BEARING REFERRED TO HEREIN ARE BASED ON THE SOUTH LINE OF TRACT FF, HANNAH RIDGE AT FEATHERGRASS FILING NO. 1. ASSUMED TO BEAR N89°39'18"W MONUMENTED AT EACH END W/ NO. 5 REBAR W/ ALUMIN CAP MARKED "POLARIS, PLS 27605".



VICINITY MAP
NOT TO SCALE



KEY MAP
SCALE: 1" = 200'

<div>48 HOURS BEFORE YOU DIG, CALL UTILITY LOCATORS</div> <div>811</div> <div>UTILITY NOTIFICATION OF COLORADO IT'S THE LAW</div> <div>THE LOCATIONS OF EXISTING UNDERGROUND UTILITIES ARE SHOWN IN AN APPROXIMATE WAY ONLY. THE CONTRACTOR SHALL DETERMINE THE EXACT LOCATION OF ALL EXISTING UTILITIES BEFORE COMMENCING WORK. THE CONTRACTOR SHALL BE FULLY RESPONSIBLE FOR ANY AND ALL DAMAGES WHICH MIGHT BE CAUSED BY HIS FAILURE TO EXACTLY LOCATE AND PRESERVE ANY AND ALL UNDERGROUND UTILITIES.</div>	NO. REVISION		DATE	REVIEW:	<div>PREPARED UNDER MY CLOSE SUPERVISION FOR AND ON BEHALF OF CLASSIC CONSULTING ENGINEERS & SURVEYORS, LLC</div> <div></div> <div><i>Kyle R. Campbell</i> 9/6/17 KYLE R. CAMPBELL, LICENSED P.E. #29794 DATE</div>	<div></div> <div>CLASSICSM CONSULTING ENGINEERS & SURVEYORS</div> <div>6385 Corporate Drive, Suite 101 (719)785-0790 Colorado Springs, Colorado 80919 (719)785-0799(Fax)</div>	<div>HANNAH RIDGE AT FEATHERGRASS FILING NO. 3 GRADING AND EROSION CONTROL PLAN TITLE SHEET</div> <table><tr><td>DESIGNED BY</td><td>KRC</td><td>SCALE</td><td>DATE</td><td>04/11/17</td></tr><tr><td>DRAWN BY</td><td>MES</td><td>(H) 1"=VARIES</td><td>SHEET</td><td>1 OF 5</td></tr><tr><td>CHECKED BY</td><td>(V) 1"= N/A</td><td>JOB NO.</td><td colspan="2">1116.00</td></tr></table>	DESIGNED BY	KRC	SCALE	DATE	04/11/17	DRAWN BY	MES	(H) 1"=VARIES	SHEET	1 OF 5	CHECKED BY	(V) 1"= N/A	JOB NO.	1116.00	
	DESIGNED BY	KRC	SCALE	DATE				04/11/17														
	DRAWN BY	MES	(H) 1"=VARIES	SHEET				1 OF 5														
	CHECKED BY	(V) 1"= N/A	JOB NO.	1116.00																		

AGENCIES:

OWNER: ELITE PROPERTIES OF AMERICA, INC.
6385 CORPORATE DRIVE, SUITE 200
COLORADO SPRINGS, CO 80919
MR. DOUGLAS M. STIMPLE (719) 592-9333

CIVIL ENGINEER: CLASSIC CONSULTING ENGINEERS & SURVEYORS
6385 CORPORATE DRIVE SUITE 304
COLORADO SPRINGS, COLORADO 80919
MR. KYLE R. CAMPBELL, P.E. (719) 785-2800

ENGINEERING DIVISION: EL PASO COUNTY
PLANNING & COMMUNITY DEVELOPMENT
2880 INTERNATIONAL CIRCLE, SUITE 110
COLORADO SPRINGS, COLORADO 80910
MR. JEFF RICE, (719) 520-7877

GAS DEPARTMENT: BLACK HILLS ENERGY
7060 ALEGRE ST.
FOUNTAIN, COLORADO 80817 MR.
GEORGE PETERSON (719) 393-6625

ELECTRIC DEPARTMENT: MOUNTAIN VIEW ELECTRIC ASSOCIATION
11140 E. WOODMEN RD.
FALCON, COLORADO 80831
MR. DARRYL EDWARDS, (719) 495-2283

TELEPHONE COMPANY: A.T.& T.
(LOCATORS) (719) 635-3674
CENTURY LINK
(LOCATORS) 811


FIRE DEPARTMENT: FALCON FIRE PROTECTION DISTRICT
7030 N. MERIDIAN RD.
FALCON, COLORADO 80831
CHIEF HARWIG (719) 495-4050

APPROVALS:

ENGINEER'S STATEMENT:

GRADING AND EROSION CONTROL PLAN ENGINEER'S STATEMENT:
THESE GRADING AND EROSION CONTROL PLANS WERE PREPARED UNDER MY DIRECTION AND SUPERVISION
AND IS CORRECT TO THE BEST OF MY KNOWLEDGE AND BELIEF. SAID PLAN HAS BEEN PREPARED
ACCORDING TO THE CRITERIA ESTABLISHED BY THE COUNTY FOR GRADING AND EROSION CONTROL PLANS.

I ACCEPT RESPONSIBILITY FOR ANY LIABILITY CAUSED BY ANY NEGLIGENT ACTS, ERRORS OR OMISSIONS ON MY PART IN PREPARING THIS PLAN



 KYLE R. CAMPBELL, COLORADO P.E. #29294

 FOR AND ON THE BEHALF OF CLASSIC CONSULTING ENGINEERS & SURVEYORS

OWNER/DEVELOPER STATEMENT:

THE OWNER WILL COMPLY WITH THE REQUIREMENTS OF THE DRAINAGE REPORT AND PLAN AND THIS SET OF CONSTRUCTION DOCUMENTS. THE OWNER WILL COMPLY WITH THE REQUIREMENTS OF THE GRADING AND EROSION CONTROL PLAN.

ELITE PROPERTIES OF AMERICA, INC.
6385 CORPORATE DRIVE, SUITE 200
COLORADO SPRINGS, CO 80919
MR. DOUGLAS M. STIMPLE

9-21-2017
DATE:

EL PASO COUNTY:

COUNTY PLAN REVIEW IS PROVIDED ONLY FOR GENERAL CONFORMANCE WITH COUNTY DESIGN CRITERIA. THE COUNTY IS NOT RESPONSIBLE FOR THE ACCURACY AND ADEQUACY OF THE DESIGN, DIMENSIONS, AND/OR ELEVATIONS WHICH SHALL BE CONFIRMED AT THE JOB SITE. THE COUNTY THROUGH THE APPROVAL OF THIS DOCUMENT ASSUMES NO RESPONSIBILITY FOR COMPLETENESS AND/OR ACCURACY OF THIS DOCUMENT.

FILED IN ACCORDANCE WITH THE REQUIREMENTS OF THE EL PASO COUNTY LAND DEVELOPMENT CODE,
DRAINAGE CRITERIA, AND ENGINEERING CRITERIA MANUAL AS AMENDED.

Approved

By: Jennifer Irvine, County Engineer
Date: 10/02/2017
El Paso County Department of Public Works

SHEET INDEX

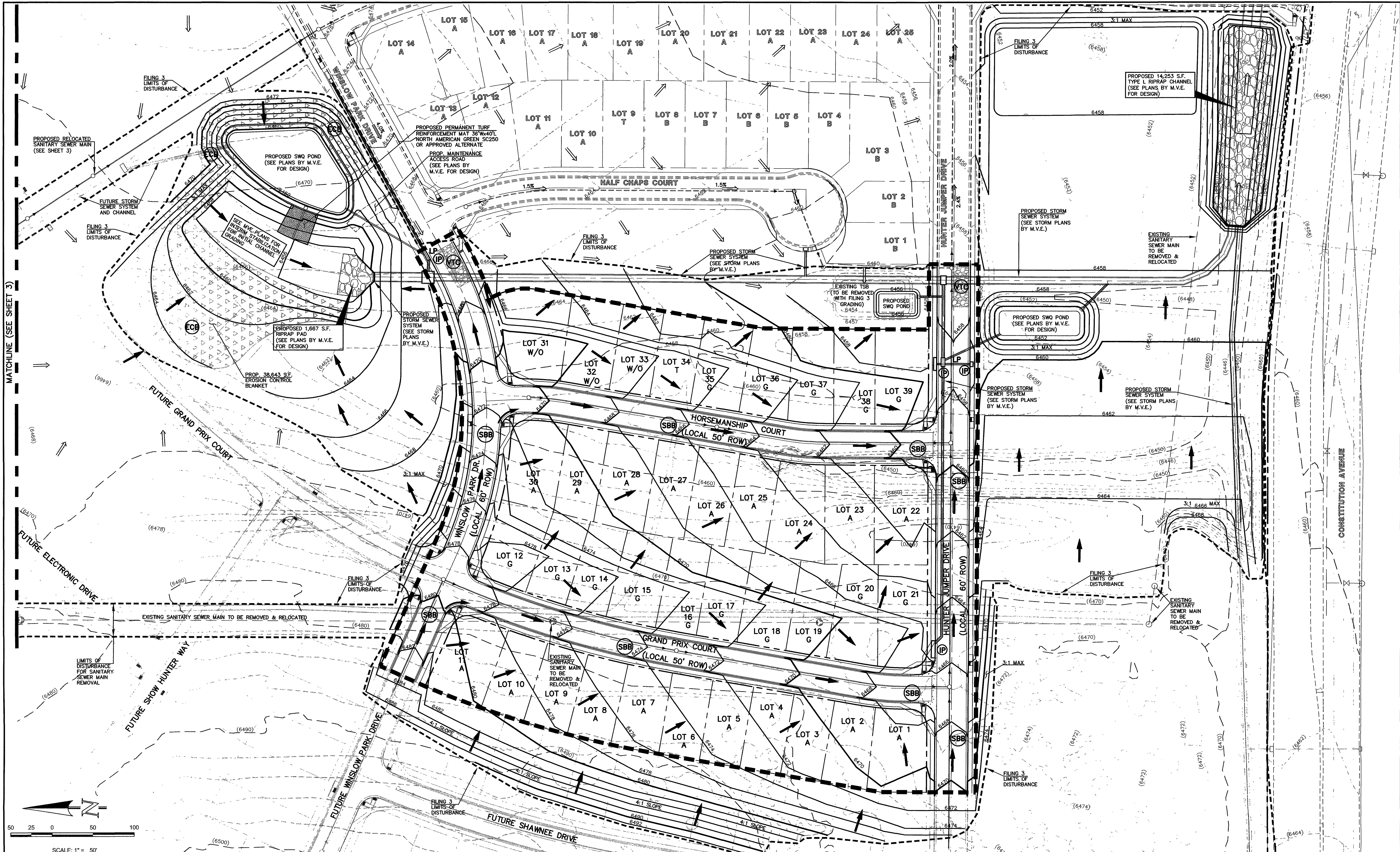
TITLE SHEET	SHEET 1 OF 5
OVERLOT GRADING AND EROSION CONTROL PLAN	SHEET 2 OF 5
OVERLOT GRADING AND EROSION CONTROL PLAN	SHEET 3 OF 5
OVERLOT GRADING AND EROSION CONTROL DETAILS	SHEET 4 OF 5
EROSION CONTROL DETAILS	SHEET 5 OF 5

HANNAH RIDGE AT FEATHERGRASS
FILING NO. 3

GRADING AND EROSION CONTROL PLAN
TITLE SHEET

DESIGNED BY	KRC	SCALE	DATE	04/11/17
DRAWN BY	MES	(H) 1"=VARIES	SHEET	1 OF 5

SF 17-012



EXISTING CONTOUR
PROPOSED CONTOUR
FILING LINE
A LOT
B LOT
WALKOUT LOT
GARDEN LOT
TRANSITION LOT
PROPOSED FLOW
EXISTING FLOW

6060
6060
"A"
"B"
"W/O"
"G"
"T"
→

LEGEND

INLET PROTECTION
SILT FENCE
VEHICLE TRACKING CONTROL
EROSION CONTROL BLANKET
(2) STRAW BALE CHECK DAM
(BOTH SIDES OF ROADWAY)

IP
SF
VTC
ECB
SBB

48 HOURS BEFORE YOU DIG,
CALL UTILITY LOCATORS
811
UTILITY NOTIFICATION OF COLORADO
IT'S THE LAW

THE LOCATIONS OF EXISTING UNDERGROUND UTILITIES ARE SHOWN IN AN APPROXIMATE WAY ONLY. THE CONTRACTOR SHALL DETERMINE THE EXACT LOCATION OF ALL EXISTING UTILITIES BEFORE COMMENCING WORK. THE CONTRACTOR SHALL BE FULLY RESPONSIBLE FOR ANY AND ALL DAMAGES WHICH MIGHT BE CAUSED BY HIS FAILURE TO EXACTLY LOCATE AND PRESERVE ANY AND ALL UNDERGROUND UTILITIES.

NO.	REVISION	DATE

REVIEW:

PREPARED UNDER MY DIRECT SUPERVISION FOR AND ON BEHALF OF
CLASSIC CONSULTING ENGINEERS AND SURVEYORS, LLC

KYLE R. CAMPBELL, COLORADO P.E. #29794
DATE 9/21/17

CLASSIC
CONSULTING
ENGINEERS & SURVEYORS

6385 Corporate Drive, Suite 101
Colorado Springs, Colorado 80919
(719)785-0790
(719)785-0799(Fax)

HANNAH RIDGE AT FEATHERGRASS
FILING NO. 3
GRADING AND EROSION CONTROL PLAN

DESIGNED BY	KRC	SCALE	DATE	04/11/17
DRAWN BY	MES	(H) 1"= 50'	SHEET	2 OF 5
CHECKED BY	(V) 1"= N/A	JOB NO.	1116.03	

Rolled Erosion Control Products (RECP) EC-6

Table RECP-1 ECTC Standard Specification for Temporary Rolled Erosion Control Products (Adapted from Erosion Control Technology Council 2005)

Product Description	Slope Applications*	Channel Applications*	Minimum Tensile Strength†	Expected Longevity
Match Control Nets	5:1 (H:V)	≤10 @ 5:1	0.25 lbs/ft ² (12 Pa)	5 lbs/ft (0.073 kN/m)
Netless Rolled Erosion Control Blankets	4:1 (H:V)	≤10 @ 4:1	0.5 lbs/ft ² (24 Pa)	5 lbs/ft (0.073 kN/m)
Single-net Erosion Control Blankets & Open Wave Textiles	3:1 (H:V)	≤15 @ 3:1	1.5 lbs/ft ² (72 Pa)	50 lbs/ft (0.73 kN/m)
Double-net Erosion Control Blankets	2:1 (H:V)	≤20 @ 2:1	1.75 lbs/ft ² (84 Pa)	75 lbs/ft (1.09 kN/m)
Match Control Nets	5:1 (H:V)	≤10 @ 5:1	0.25 lbs/ft ² (12 Pa)	25 lbs/ft (0.36 kN/m)
Erosion Control Blankets & Open Wave Textiles (slowly degrading)	1.5:1 (H:V)	≤10 @ 1.5:1	2.00 lbs/ft ² (96 Pa)	100 lbs/ft (1.45 kN/m)
Erosion Control Blankets & Open Wave Textiles	1:1 (H:V)	≤10 @ 1:1	2.25 lbs/ft ² (108 Pa)	125 lbs/ft (1.82 kN/m)

* C Factor and shear stress for match control nettings must be obtained with testing used in conjunction with pre-applied mulch material. (See Section 5.3 of Chapter 7 Construction BMPs for more information on the C Factor.)

† Minimum Average Roll Values, Machine direction using ECTC Mod ASTM D 5055

* C Factor calculated as a ratio of soil loss from RECP protected slope (tested at specified or greater gradient, H:V) to ratio of soil loss from unprotected (control) plot in large-scale testing.

* Required minimum shear stress RECP (unvegetated) can sustain without physical damage or excess erosion (> 12.7 mm (0.5 in) soil loss) during a 30-minute flow event in large-scale testing.

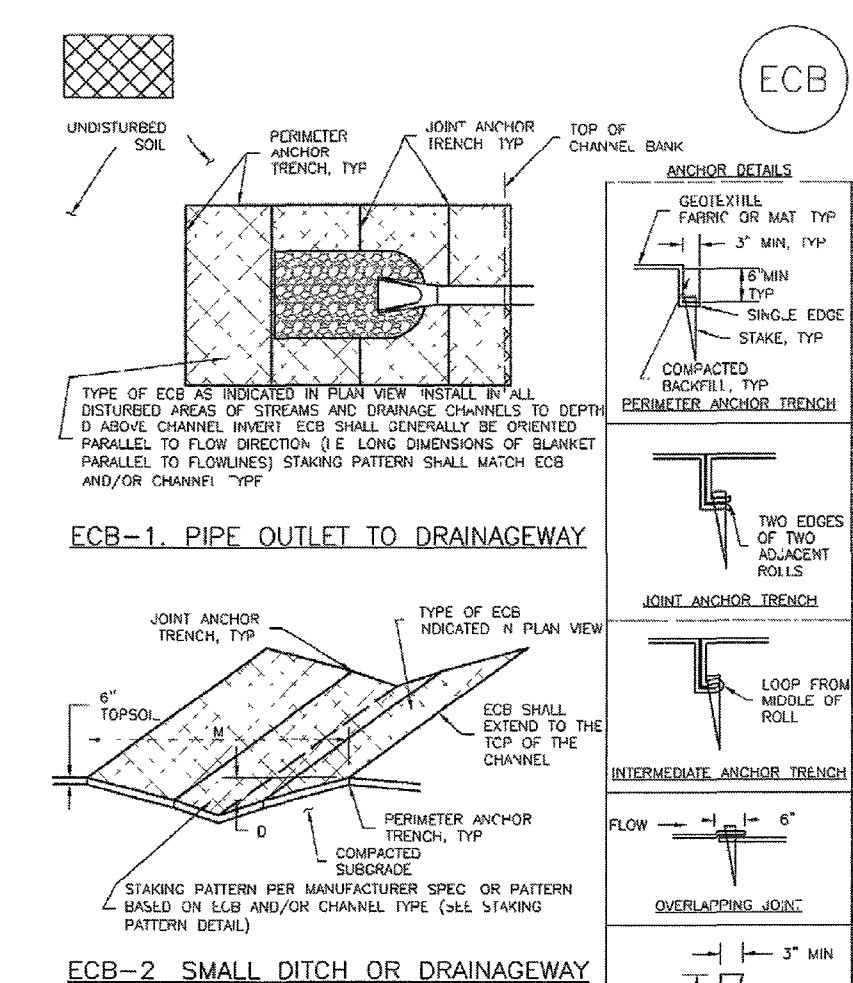
* The permeable shear stress levels established for each performance category are based on historical experience with products characterized by Manning's roughness coefficients in the range of 0.01 - 0.05.

* Acceptable large-scale test methods may include ASTM D 6459, or other independent testing deemed acceptable by the engineer.

* Pa the engineer's discretion Recommended acceptable large-scale testing protocol may include ASTM D 5460, or other independent testing deemed acceptable by the engineer.

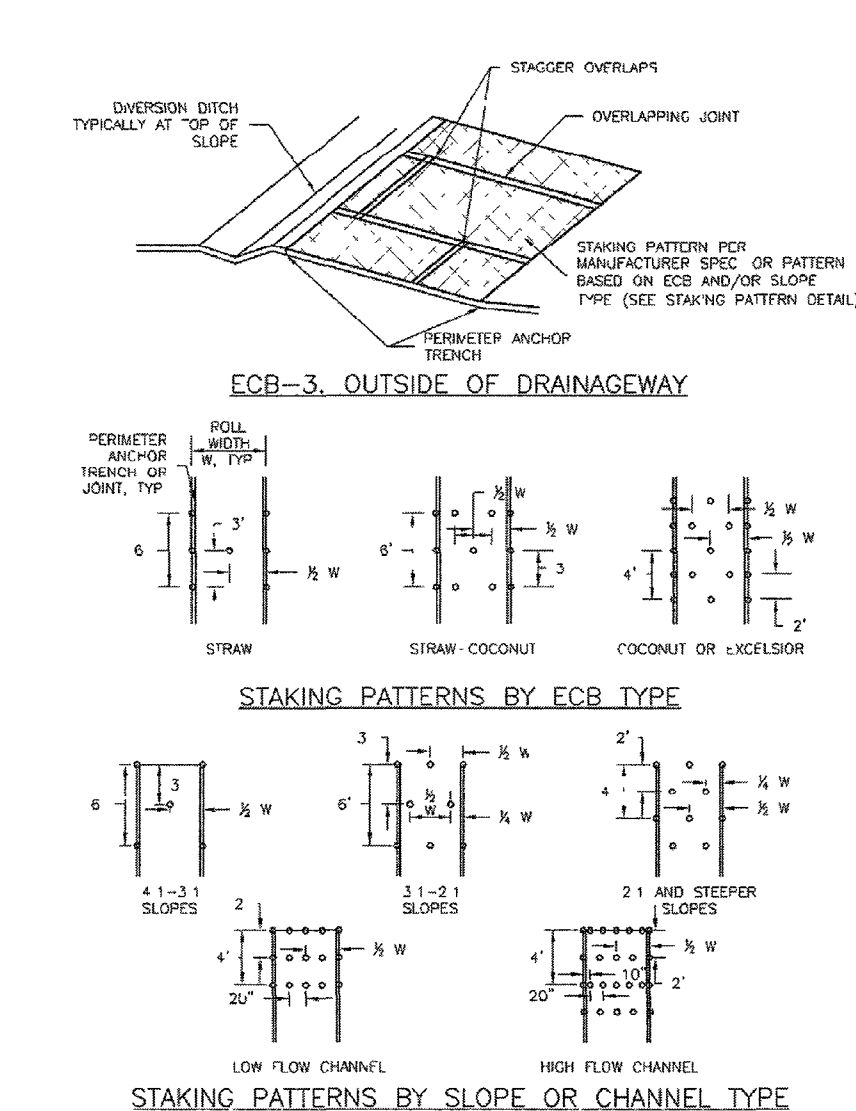
November 2010 Urban Drainage and Flood Control District Urban Storm Drainage Criteria Manual Volume 3 RECP-3

EC-6 Rolled Erosion Control Products (RECP)



RECP-6 Urban Drainage and Flood Control District Urban Storm Drainage Criteria Manual Volume 3 November 2010

Rolled Erosion Control Products (RECP) EC-6



November 2010 Urban Drainage and Flood Control District Urban Storm Drainage Criteria Manual Volume 3 RECP-7

EC-6 Rolled Erosion Control Products (RECP)

EROSION CONTROL BLANKET INSTALLATION NOTES

1. SEE PLAN VIEW FOR LOCATION OF ERS - TYPE OF ERS (STRAW, STRAW-COCOON, COCOON OR EXCORSIOR) - AREA A IN SQUARE YARDS OF EACH TYPE OF ERS
2. 100% NATURAL AND BIODEGRADABLE MATERIALS ARE PREFERRED FOR RECPs, ALTHOUGH SOME JURISDICTIONS MAY ALLOW OTHER MATERIALS IN SOME APPLICATIONS
3. IN AREAS WHERE ERS ARE SHOWN ON THE PLANS, THE PERMITS SHALL PLACE TOPSOIL AND PERFORM FINAL GRADING, SURFACE PREPARATION, AND SEEDING AND MULCHING. SURFACING SHALL BE SMOOTH AND MOIST PRIOR TO ERS INSTALLATION AND THE ERS SHALL BE IN FULL CONTACT WITH SUBGRADE. NO GAPS OR JOINTS SHALL EXIST UNDER THE BLANKET.
4. PERMETER ANCHOR TRENCH SHALL BE USED ALONG THE OUTSIDE PERIMETER OF ALL BLANKET AREAS
5. JOINT ANCHOR TRENCH SHALL BE USED TO JOIN ROLLS OF ERS TOGETHER (LONGITUDINALLY AND TRANSVERSELY) FOR ALL ERS EXCEPT STRAW WHICH MAY USE AN OVERLAPPING JOINT
6. INTERCONNECT ANCHOR TRENCH SHALL BE USED AT SPACING OF ONE-HALF ROLL LENGTH FOR COCOON AND EXCORSIOR ERS
7. OVERLAPPING JOINT DETAIL SHALL BE USED TO JOIN ROLLS OF ERS TOGETHER FOR ERS ON SLOPES
8. MATERIAL SPECIFICATIONS OF ERS SHALL CONFORM TO TABLE EC-1
9. ANY AREAS OF SEEDING AND MULCHING OBTAINED IN THE PROCESS OF INSTALLING ERS SHALL BE RESEEDED AND MULCHED
10. DETAILS ON DESIGN PLANS FOR MAJOR DRAINAGEWAY STABILIZATION WILL GOVERN IF DIFFERENT FROM THOSE SHOWN HERE

TYPE	COCOON CONTENT	STRAW CONTENT	EXCORSIOR CONTENT	RECOMMENDED NETTING*
STRAW	-	100%	-	DOUBLE / NATURAL
STRAW-COCOON	30% MIN	70% MAX	-	DOUBLE / NATURAL
COCOON	100%	-	-	DOUBLE / NATURAL
EXCORSIOR	-	-	100%	DOUBLE / NATURAL

* DOUBLE NETTING SHALL BE USED FOR SLOPES OF 2:1 OR STEEPER SLOPES

* PERMETER ANCHOR TRENCH SHALL BE USED FOR ALL ERS EXCEPT STRAW WHICH MAY USE AN OVERLAPPING JOINT

Rolled Erosion Control Products (RECP) EC-6

EROSION CONTROL BLANKET MAINTENANCE NOTES

1. INSPECT BMPs EACH WORKDAY, AND MAINTAIN THEM IN EFFECTIVE OPERATING CONDITION. MAINTENANCE OF BMPs SHOULD BE PROGRESSIVE, NOT REACTIVE. INSPECT BMPs AS SOON AS POSSIBLE (AND ALWAYS WITHIN 24 HOURS) FOLLOWING A STORM THAT CAUSES SURFACE EROSION, AND PERFORM NECESSARY MAINTENANCE
2. FREQUENT OBSERVATIONS AND MAINTENANCE ARE NECESSARY TO MAINTAIN BMPs IN EFFECTIVE OPERATING CONDITION. INSPECTIONS AND CORRECTIVE MEASURES SHOULD BE DOCUMENTED THOROUGHLY
3. WHERE BMPs HAVE FAILED, REPAIR OR REPLACEMENT SHOULD BE INITIATED UPON DISCOVERY OF THE FAILURE
4. ERSs SHALL BE LEFT IN PLACE TO EVENTUALLY BIODEGRADE, UNLESS REQUESTED TO BE REMOVED BY THE LOCAL JURISDICTION
5. ANY ERS PLANTED OUT, TORN, OR OTHERWISE DAMAGED SHALL BE REPAIRED OR REPLACED. ANY ERS PLANTED BELOW THE DESIGN LINE THAT HAVE UPSETS TO CREATED A VOID UNDER THE BLANKET, OR THAT REMAIN BEYOND OF GRASS SHALL BE REPAIRED, RESEEDED AND MULCHED ARE THE ERS REINSTALLED

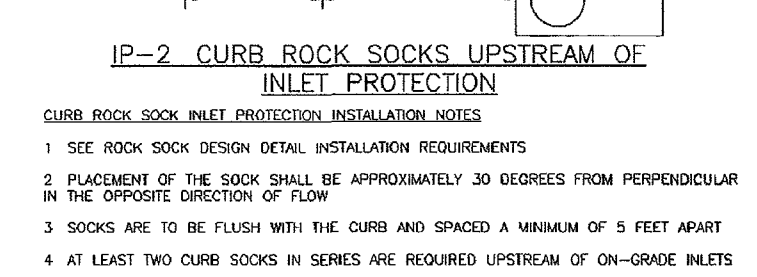
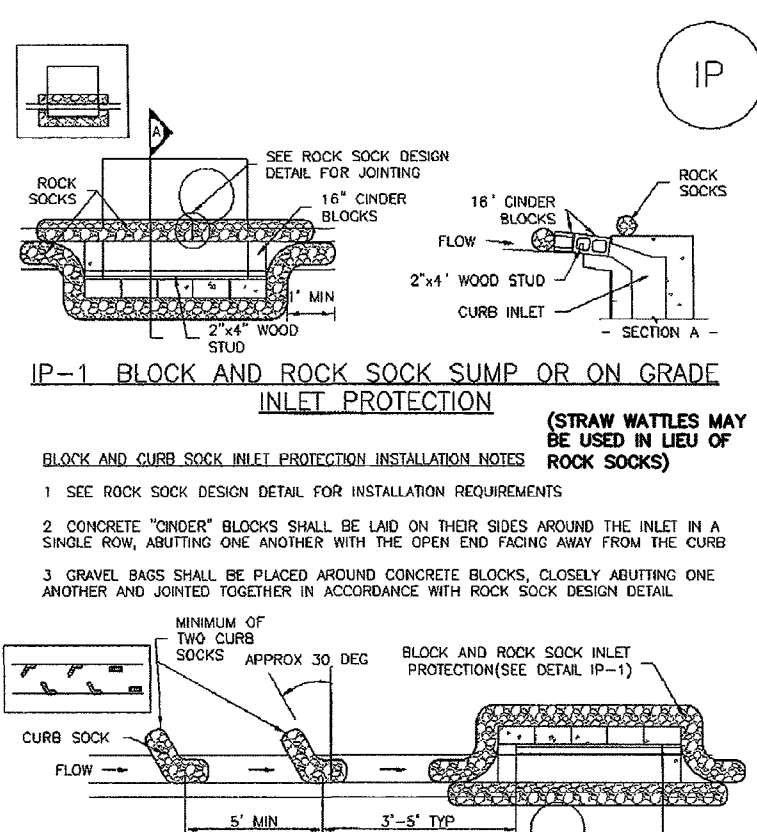
NOTE: MANY JURISDICTIONS HAVE BMP DETAILS THAT VARY FROM USED STANDARD DETAILS. CONSULT WITH LOCAL JURISDICTIONS AS TO WHICH DETAIL SHOULD BE USED WHEN DIFFERENCES ARE NOTED

(DETAILS ADAPTED FROM DOUGLAS COUNTY COLORADO AND TOWN OF PARKER COLORADO, NOT AVAILABLE IN AUTOCAD)

November 2010 Urban Drainage and Flood Control District Urban Storm Drainage Criteria Manual Volume 3 RECP-9



SC-6 Inlet Protection (IP)



IP-1 BLOCK AND CURB SOCK SUMP OR ON GRADE INLET PROTECTION (STRAW WATTLES MAY BE USED IN LIEU OF ROCK SOCKS)

IP-2 CURB SOCK SOCKS UPSTREAM OF INLET PROTECTION

1. SEE ROCK SOCK DESIGN DETAIL FOR INSTALLATION REQUIREMENTS

2. CONCRETE "TRENCH" BLOCKS SHALL BE Laid ON THEIR SIDES AROUND THE INLET IN A SINGLE ROW, ADJUTING ONE ANOTHER WITH THE OPEN END FACING AWAY FROM THE CURB

3. CURB SOCKS SHALL BE PLACED AROUND CONCRETE BLOCKS, CLOSELY ADJUTING ONE ANOTHER AND JOINED TOGETHER IN ACCORDANCE WITH ROCK SOCK DESIGN DETAIL

4. AT LEAST TWO CURB SOCKS IN SERIES ARE REQUIRED UPSTREAM OF ON-GRADE INLETS

SC-6 Inlet Protection (IP)

GENERAL INLET PROTECTION INSTALLATION NOTES

1. SEE PLAN VIEW FOR LOCATION OF INLET PROTECTION - TYPE OF INLET PROTECTION (IP-1, IP-2, IP-3, IP-4, IP-5)
2. INLET PROTECTION SHALL BE INSTALLED PRIOR TO ANY INLET CONSTRUCTION OR FLOWING. INSTALL INLET PROTECTION PRIOR TO OVERLAY OF CURB
3. MANY JURISDICTIONS HAVE BMP DETAILS THAT VARY FROM USED STANDARD DETAILS. CONSULT WITH LOCAL JURISDICTIONS AS TO WHICH DETAIL SHOULD BE USED WHEN DIFFERENCES ARE NOTED

INLET PROTECTION MAINTENANCE NOTES

1. INSPECT BMPs EACH WORKDAY, AND MAINTAIN THEM IN EFFECTIVE OPERATING CONDITION. MAINTENANCE OF BMPs SHOULD BE PROGRESSIVE, NOT REACTIVE. INSPECT BMPs AS SOON AS POSSIBLE (AND ALWAYS WITHIN 24 HOURS) FOLLOWING A STORM THAT CAUSES SURFACE EROSION, AND PERFORM NECESSARY MAINTENANCE
2. FREQUENT OBSERVATIONS AND MAINTENANCE ARE NECESSARY TO MAINTAIN BMPs IN EFFECTIVE OPERATING CONDITION. INSPECTIONS AND CORRECTIVE MEASURES SHOULD BE DOCUMENTED THOROUGHLY
3. WHERE BMPs HAVE FAILED, REPAIR OR REPLACEMENT SHOULD BE INITIATED UPON DISCOVERY OF THE FAILURE
4. SEDIMENT ACCUMULATED UPSTREAM OF INLET PROTECTION SHALL BE REMOVED AS NECESSARY TO MAINTAIN BMP EFFECTIVENESS. THOROUGHLY WASH STORAGE VOLUMES REACHES SIZE OF CAPACITY, A DEPTH OF 6" WHEN SILT FENCE IS USED, OR 8" OF THE HEIGHT FOR STRAW BALE

5. INLET PROTECTION IS TO REMAIN IN PLACE UNTIL THE UPSTREAM DISTURBED AREA IS PERMANENTLY STABILIZED, UNLESS THE LOCAL JURISDICTION APPROVES EARLY REMOVAL OF INLET PROTECTION IN SERIES

6. WHEN INLET PROTECTION AT AREA INLETS IS REMOVED, THE DISTURBED AREA SHALL BE COVERED WITH TOP SOIL, SEEDING AND MULCHING, OR OTHERWISE STABILIZED IN A MANNER APPROVED BY THE LOCAL JURISDICTION

(DETAILS ADAPTED FROM TOWN OF PARKER COLORADO AND CITY OF AURORA, COLORADO, NOT AVAILABLE IN AUTOCAD)

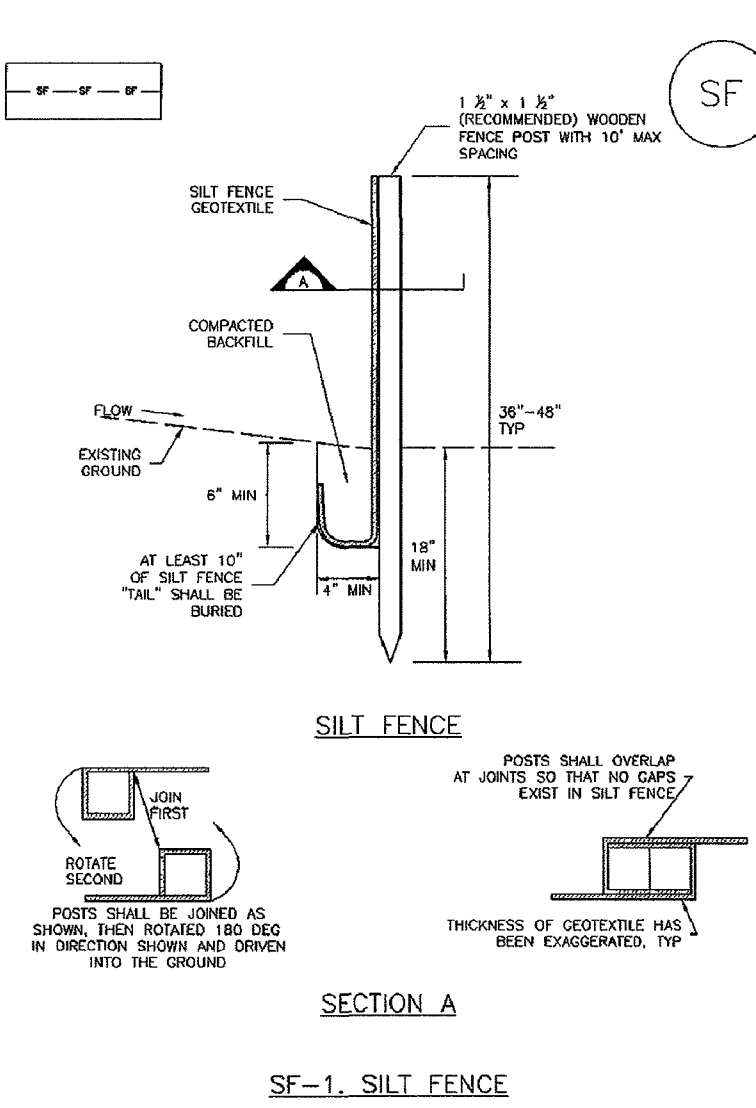
NOTE: MANY JURISDICTIONS HAVE BMP DETAILS THAT VARY FROM USED STANDARD DETAILS. CONSULT WITH LOCAL JURISDICTIONS AS TO WHICH DETAIL SHOULD BE USED WHEN DIFFERENCES ARE NOTED

NOTE: THE DETAILS INCLUDED WITH THIS FACT SHEET SHOW COMMONLY USED, CONVENTIONAL METHODS OF INLET PROTECTION IN THE SLOPE DISTURBED AREA. THERE ARE MANY PROPER INLET PROTECTION METHODS. IN THE MARKET, LOCALITY-SPECIFIC PROPER AND DISCOUNTED USE OF PROPRIETARY INLET PROTECTION. HOWEVER, IN THE EVENT PROPRIETARY METHODS ARE USED, THE APPROPRIATE DETAIL FROM THE MANUFACTURER MUST BE INCLUDED IN THE BMP AND THE BMP MUST BE INSTALLED AND MAINTAINED AS SHOWN IN THE MANUFACTURER'S LITERATURE

NOTE: SOME MUNICIPALITIES DISCOURAGE OR PROHIBIT THE USE OF STRAW BALES FOR INLET PROTECTION. CHECK WITH LOCAL JURISDICTION TO DETERMINE IF STRAW BALE INLET PROTECTION IS ACCEPTABLE

IP-8 Urban Drainage and Flood Control District Urban Storm Drainage Criteria Manual Volume 3 August 2013

Silt Fence (SF)



SF-1. SILT FENCE

SC-1

SC-1 Silt Fence (SF)

SILT FENCE INSTALLATION NOTES

1. SILT FENCE MUST BE PLACED AWAY FROM THE TOE OF THE SLOPE TO ALLOW FOR WATER PASSING. SILT FENCE AT THE TOE OF A SLOPE SHOULD BE INSTALLED IN A FLAT LOCATION AT LEAST SEVEN FEET (2 TO 3 FT) FROM THE TOE OF THE SLOPE TO ALLOW ROOM FOR RUNOFF AND DEPOSITION
2. A UNIFORM 6" x 4" ANCHOR TRENCH SHALL BE EXCAVATED (HAND TRENCH OR SILT FENCE INSTALLATION SERVICE, NO ROAD GRADERS, BACKHOES, OR STRAW EQUIPMENT SHALL BE USED)
3. COMPACT ANCHOR TRENCH BY HAND WITH A "STAMPING IRON" OR BY WHEELED ROLLING EQUIPMENT SHALL BE SUCH THAT SILT FENCE RESISTS BEING PULLED OUT OF ANCHOR TRENCH BY HAND
4. SILT FENCE SHALL BE PULLED TIGHT AS IT IS ANCHORED TO THE STAKES. THERE SHOULD BE NO NOTICABLE SAG BETWEEN STAKES AFTER IT HAS BEEN ANCHORED TO THE STAKES
5. SILT FENCE FABRIC SHALL BE ANCHORED TO THE STAKES USING 1" HEAVY DUTY STAPLES OR RINGS WITH 1" HEADS. STAPLES AND RINGS SHOULD BE PLACED 3' ALONG THE FABRIC DOWN THE STAKE
6. AT THE END OF A ROLL OF SILT FENCE ALONG A CONTOUR, THE SILT FENCE SHOULD BE TURNED PERPENDICULAR TO THE CONTOUR TO CREATE A "J-HOOK." THE "J-HOOK" EXTENSION, PERPENDICULAR TO THE CONTOUR, SHOULD BE OF SUFFICIENT LENGTH TO KEEP AWAY FROM FLOWING FLOWING THE END OF THE SILT FENCE (TYPICALLY 10' - 20')
7. SILT FENCE SHALL BE INSTALLED PRIOR TO ANY LAND DISTURBING ACTIVITIES

SILT FENCE MAINTENANCE NOTES

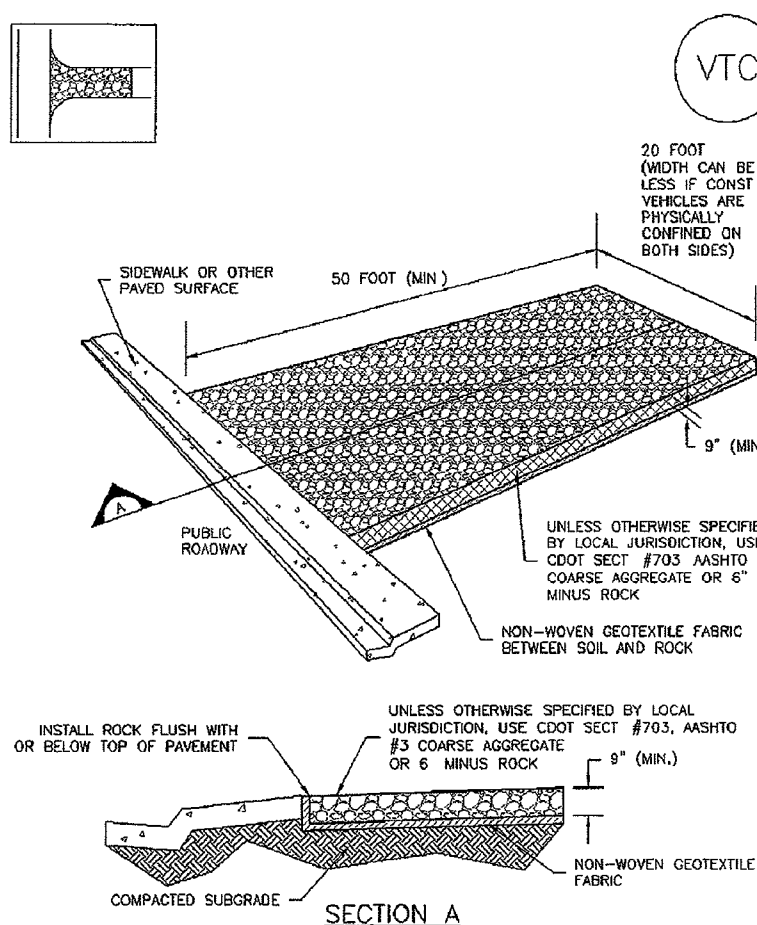
1. INSPECT BMPs EACH WORKDAY, AND MAINTAIN THEM IN EFFECTIVE OPERATING CONDITION. MAINTENANCE OF BMPs SHOULD BE PROGRESSIVE, NOT REACTIVE. INSPECT BMPs AS SOON AS POSSIBLE (AND ALWAYS WITHIN 24 HOURS) FOLLOWING A STORM THAT CAUSES SURFACE EROSION, AND PERFORM NECESSARY MAINTENANCE
2. FREQUENT OBSERVATIONS AND MAINTENANCE ARE NECESSARY TO MAINTAIN BMPs IN EFFECTIVE OPERATING CONDITION. INSPECTIONS AND CORRECTIVE MEASURES SHOULD BE DOCUMENTED THOROUGHLY
3. WHERE BMPs HAVE FAILED, REPAIR OR REPLACEMENT SHOULD BE INITIATED UPON DISCOVERY OF THE FAILURE
4. SEDIMENT ACCUMULATED UPSTREAM OF THE SILT FENCE SHALL BE REMOVED AS NEEDED TO MAINTAIN THE FUNCTIONALITY OF THE BMP. TYPICALLY WHEN DEPTH OF ACCUMULATED SEDIMENT IS APPROXIMATELY 6"
5. REPAIR OR REPLACE SILT FENCE WHEN THERE ARE SIGNS OF WEAR SUCH AS SAGGING, Tearing, OR COLLAPSE
6. SIL FENCE IS TO REMAIN IN PLACE UNTIL THE UPSTREAM DISTURBED AREA IS STABILIZED AND APPROVED BY THE LOCAL JURISDICTION OR IS REPLACED BY AN EQUIVALENT PERMITS REQUIRED CONTROL BMP
7. WHEN SILT FENCE IS REMOVED, A.J. DISTURBED AREAS SHALL BE COVERED WITH TOPSOIL, SEEDING AND MULCHING BY HAND OR EQUIPMENT, SHALL BE AS APPROVED BY LOCAL JURISDICTION

(DETAILS ADAPTED FROM TOWN OF PARKER COLORADO AND CITY OF AURORA, NOT AVAILABLE IN AUTOCAD)

NOTE: MANY JURISDICTIONS HAVE BMP DETAILS THAT VARY FROM USED STANDARD DETAILS. CONSULT WITH LOCAL JURISDICTIONS AS TO WHICH DETAIL SHOULD BE USED WHEN DIFFERENCES ARE NOTED

SF-4 Urban Drainage and Flood Control District Urban Storm Drainage Criteria Manual Volume 3 November 2010

Vehicle Tracking Control (VTC)



VTC-1. AGGREGATE VEHICLE TRACKING CONTROL

SM-4 Vehicle Tracking Control (VTC)

STABILIZED CONSTRUCTION ENTRANCE/EXIT INSTALLATION NOTES

1. SEE PLAN VIEW FOR LOCATION OF CONSTRUCTION ENTRANCE/EXIT (CE) - TYPE OF CONSTRUCTION ENTRANCE/EXIT (CE) (STRAW, WITHOUT WHEEL WASH CONSTRUCTION MAT OF TRAIL)
2. CONSTRUCTION MAT OR TRAIL STABILIZED CONSTRUCTION ENTRANCES ARE ONLY TO BE USED ON SHORT DURATION PROJECTS. TYPICALLY INSTALLED FROM A TRAIL TO A WORK AREA WHERE THERE WILL BE LIMITED VEHICLE ACCESS
3. A STABILIZED CONSTRUCTION ENTRANCE/EXIT SHALL BE LOCATED AT ALL ACCESS POINTS WHERE VEHICLES ACCESS THE CONSTRUCTION SITE FROM PAVED ROAD - 10' WIDE
4. STABILIZED CONSTRUCTION ENTRANCE/EXIT SHALL BE INSTALLED PRIOR TO ANY LAND DISTURBING ACTIVITIES
5. A NON-WOVEN GEOTEXTILE FABRIC SHALL BE PLACED UNDER THE STABILIZED CONSTRUCTION ENTRANCE/EXIT PRIOR TO THE LAYOUT OF ROCK
6. UNLESS OTHERWISE SPECIFIED BY LOCAL JURISDICTION, ROCK SHALL COMPLY WITH 3" MAXIMUM SIZE, OR 4" MAXIMUM SIZE, OR 6" MAXIMUM SIZE, OR 8" MAXIMUM SIZE, OR 10" MAXIMUM SIZE, OR 12" MAXIMUM SIZE, OR 14" MAXIMUM SIZE, OR 16" MAXIMUM SIZE, OR 18" MAXIMUM SIZE, OR 20" MAXIMUM SIZE, OR 22" MAXIMUM SIZE, OR 24" MAXIMUM SIZE, OR 26" MAXIMUM SIZE, OR 28" MAXIMUM SIZE, OR 30" MAXIMUM SIZE, OR 32" MAXIMUM SIZE, OR 34" MAXIMUM SIZE, OR 36" MAXIMUM SIZE, OR 38" MAXIMUM SIZE, OR 40" MAXIMUM SIZE, OR 42" MAXIMUM SIZE, OR 44" MAXIMUM SIZE, OR 46" MAXIMUM SIZE, OR 48" MAXIMUM SIZE, OR 50" MAXIMUM SIZE, OR 52" MAXIMUM SIZE, OR 54" MAXIMUM SIZE, OR 56" MAXIMUM SIZE, OR 58" MAXIMUM SIZE, OR 60" MAXIMUM SIZE, OR 62" MAXIMUM SIZE, OR 64" MAXIMUM SIZE, OR 66" MAXIMUM SIZE, OR 68" MAXIMUM SIZE, OR 70" MAXIMUM SIZE, OR 72" MAXIMUM SIZE, OR 74" MAXIMUM SIZE, OR 76" MAXIMUM SIZE, OR 78" MAXIMUM SIZE, OR 80" MAXIMUM SIZE, OR 82" MAXIMUM SIZE, OR 84" MAXIMUM SIZE, OR 86" MAXIMUM SIZE, OR 88" MAXIMUM SIZE, OR 90" MAXIMUM SIZE, OR 92" MAXIMUM SIZE, OR 94" MAXIMUM SIZE, OR 96" MAXIMUM SIZE, OR 98" MAXIMUM SIZE, OR 100" MAXIMUM SIZE, OR 102" MAXIMUM SIZE, OR 104" MAXIMUM SIZE, OR 106" MAXIMUM SIZE, OR 108" MAXIMUM SIZE, OR 110" MAXIMUM SIZE, OR 112" MAXIMUM SIZE, OR 114" MAXIMUM SIZE, OR 116" MAXIMUM SIZE, OR 118" MAXIMUM SIZE, OR 120" MAXIMUM SIZE, OR 122" MAXIMUM SIZE, OR 124" MAXIMUM SIZE, OR 126" MAXIMUM SIZE, OR 128" MAXIMUM SIZE, OR 130" MAXIMUM SIZE, OR 132" MAXIMUM SIZE, OR 134" MAXIMUM SIZE, OR 136" MAXIMUM SIZE, OR 138" MAXIMUM SIZE, OR 140" MAXIMUM SIZE, OR 142" MAXIMUM SIZE, OR 144" MAXIMUM SIZE, OR 146" MAXIMUM SIZE, OR 148" MAXIMUM SIZE, OR 150" MAXIMUM SIZE, OR 152" MAXIMUM SIZE, OR 154" MAXIMUM SIZE, OR 156" MAXIMUM SIZE, OR 158" MAXIMUM SIZE, OR 160" MAXIMUM SIZE, OR 162" MAXIMUM SIZE, OR 164" MAXIMUM SIZE, OR 166" MAXIMUM SIZE, OR 168" MAXIMUM SIZE, OR 170" MAXIMUM SIZE, OR 172" MAXIMUM SIZE, OR 174" MAXIMUM SIZE, OR 176" MAXIMUM SIZE, OR 178" MAXIMUM SIZE, OR 180" MAXIMUM SIZE, OR 182" MAXIMUM SIZE, OR 184" MAXIMUM SIZE, OR 186" MAXIMUM SIZE, OR 188" MAXIMUM SIZE, OR 190" MAXIMUM SIZE, OR 192" MAXIMUM SIZE, OR 194" MAXIMUM SIZE, OR 196" MAXIMUM SIZE, OR 198" MAXIMUM SIZE, OR 200" MAXIMUM SIZE, OR 202" MAXIMUM SIZE, OR 204" MAXIMUM SIZE, OR 206" MAXIMUM SIZE, OR 208" MAXIMUM SIZE, OR 210" MAXIMUM SIZE, OR 212" MAXIMUM SIZE, OR 214" MAXIMUM SIZE, OR 216" MAXIMUM SIZE, OR 218" MAXIMUM SIZE, OR 220" MAXIMUM SIZE, OR 222" MAXIMUM SIZE, OR 224" MAXIMUM SIZE, OR 226" MAXIMUM SIZE, OR 228" MAXIMUM SIZE, OR 230" MAXIMUM SIZE, OR 232" MAXIMUM SIZE, OR 234" MAXIMUM SIZE, OR 236" MAXIMUM SIZE, OR 238" MAXIMUM SIZE, OR 240" MAXIMUM SIZE, OR 242" MAXIMUM SIZE, OR 244" MAXIMUM SIZE, OR 246" MAXIMUM SIZE, OR 248" MAXIMUM SIZE, OR 250" MAXIMUM SIZE, OR 252" MAXIMUM SIZE, OR 254" MAXIMUM SIZE, OR 256" MAXIMUM SIZE, OR 258" MAXIMUM SIZE, OR 260" MAXIMUM SIZE, OR 262" MAXIMUM SIZE, OR 264" MAXIMUM SIZE, OR 266" MAXIMUM SIZE, OR 268" MAXIMUM SIZE, OR 270" MAXIMUM SIZE, OR 272" MAXIMUM SIZE, OR 274" MAXIMUM SIZE, OR 276" MAXIMUM SIZE, OR 278" MAXIMUM SIZE, OR 280" MAXIMUM SIZE, OR 282" MAXIMUM SIZE, OR 284" MAXIMUM SIZE, OR 286" MAXIMUM SIZE, OR 288" MAXIMUM SIZE, OR 290" MAXIMUM SIZE, OR 292" MAXIMUM SIZE, OR 294" MAXIMUM SIZE, OR 296" MAXIMUM SIZE, OR 298" MAXIMUM SIZE, OR 300" MAXIMUM SIZE, OR 302" MAXIMUM SIZE, OR 304" MAXIMUM SIZE, OR 306" MAXIMUM SIZE, OR 308" MAXIMUM SIZE, OR 310" MAXIMUM SIZE, OR 312" MAXIMUM SIZE, OR 314" MAXIMUM SIZE, OR 316" MAXIMUM SIZE, OR 318" MAXIMUM SIZE, OR 320" MAXIMUM SIZE, OR 322" MAXIMUM SIZE, OR 324" MAXIMUM SIZE, OR 326" MAXIMUM SIZE, OR 328" MAXIMUM SIZE, OR 330" MAXIMUM SIZE, OR 332" MAXIMUM SIZE, OR 334" MAXIMUM SIZE, OR 336" MAXIMUM SIZE, OR 338" MAXIMUM SIZE, OR 340" MAXIMUM SIZE, OR 342" MAXIMUM SIZE, OR 344" MAXIMUM SIZE, OR 346" MAXIMUM SIZE, OR 348" MAXIMUM SIZE, OR 350" MAXIMUM SIZE, OR 352" MAXIMUM SIZE, OR 354" MAXIMUM SIZE, OR 356" MAXIMUM SIZE, OR 358" MAXIMUM SIZE, OR 360" MAXIMUM SIZE, OR 362" MAXIMUM SIZE, OR 364" MAXIMUM SIZE, OR 366" MAXIMUM SIZE, OR 368" MAXIMUM SIZE, OR 370" MAXIMUM SIZE, OR 372" MAXIMUM SIZE, OR 374" MAXIMUM SIZE, OR 376" MAXIMUM SIZE, OR 378" MAXIMUM SIZE, OR 380" MAXIMUM SIZE, OR 382" MAXIMUM SIZE, OR 384" MAXIMUM SIZE, OR 386" MAXIMUM SIZE, OR 388" MAXIMUM SIZE, OR 390" MAXIMUM SIZE, OR 392" MAXIMUM SIZE, OR 394" MAXIMUM SIZE, OR 396" MAXIMUM SIZE, OR 398" MAXIMUM SIZE, OR 400" MAXIMUM SIZE, OR 402" MAXIMUM SIZE, OR 404" MAXIMUM SIZE, OR 406" MAXIMUM SIZE, OR 408" MAXIMUM SIZE, OR 410" MAXIMUM SIZE, OR 412" MAXIMUM SIZE, OR 414" MAXIMUM SIZE, OR 416" MAXIMUM SIZE, OR 418" MAXIMUM SIZE, OR 420" MAXIMUM SIZE, OR 422" MAXIMUM SIZE, OR 424" MAXIMUM SIZE, OR 426" MAXIMUM SIZE, OR 428" MAXIMUM SIZE, OR 430" MAXIMUM SIZE, OR 432" MAXIMUM SIZE, OR 434" MAXIMUM SIZE, OR 436" MAXIMUM SIZE, OR 438" MAXIMUM SIZE, OR 440" MAXIMUM SIZE, OR 442" MAXIMUM SIZE, OR 444" MAXIMUM SIZE, OR 446" MAXIMUM SIZE, OR 448" MAXIMUM SIZE, OR 450" MAXIMUM SIZE, OR 452" MAXIMUM SIZE, OR 454" MAXIMUM SIZE, OR 456" MAXIMUM SIZE, OR 458" MAXIMUM SIZE, OR 460" MAXIMUM SIZE, OR 462" MAXIMUM SIZE, OR 464" MAXIMUM SIZE, OR 466" MAXIMUM SIZE, OR 468" MAXIMUM SIZE, OR 470" MAXIMUM SIZE, OR 472" MAXIMUM SIZE, OR 474" MAXIMUM SIZE, OR 476" MAXIMUM SIZE, OR 478" MAXIMUM SIZE, OR 480" MAXIMUM SIZE, OR 482" MAXIMUM SIZE, OR 484" MAXIMUM SIZE, OR 486" MAXIMUM SIZE, OR 488" MAXIMUM SIZE, OR 490" MAXIMUM SIZE, OR 492" MAXIMUM SIZE, OR 494" MAXIMUM SIZE, OR 496" MAXIMUM SIZE, OR 498" MAXIMUM SIZE, OR 500" MAXIMUM SIZE, OR 502" MAXIMUM SIZE, OR 504" MAXIMUM SIZE, OR 506" MAXIMUM SIZE, OR 508" MAXIMUM SIZE, OR 510" MAXIMUM SIZE, OR 512" MAXIMUM SIZE, OR 514" MAXIMUM SIZE, OR 516" MAXIMUM SIZE, OR 518" MAXIMUM SIZE, OR 520" MAXIMUM SIZE, OR 522" MAXIMUM SIZE, OR 524" MAXIMUM SIZE, OR 526" MAXIMUM SIZE, OR 528" MAXIMUM SIZE, OR 530" MAXIMUM SIZE, OR 532" MAXIMUM SIZE, OR 534" MAXIMUM SIZE, OR 536" MAXIMUM SIZE, OR 538" MAXIMUM SIZE, OR 540" MAXIMUM SIZE, OR 542" MAXIMUM SIZE, OR 544" MAXIMUM SIZE, OR 546" MAXIMUM SIZE, OR 548" MAXIMUM SIZE, OR 550" MAXIMUM SIZE, OR 552" MAXIMUM SIZE, OR 554" MAXIMUM SIZE, OR 556" MAXIMUM SIZE, OR 558" MAXIMUM SIZE, OR 560" MAXIMUM SIZE, OR 562" MAXIMUM SIZE, OR 564" MAXIMUM SIZE, OR 566" MAXIMUM SIZE, OR 568" MAXIMUM SIZE, OR 570" MAXIMUM SIZE, OR 572" MAXIMUM SIZE, OR 574" MAXIMUM SIZE, OR 576" MAXIMUM SIZE, OR 578" MAXIMUM SIZE, OR 580" MAXIMUM SIZE, OR 582" MAXIMUM SIZE, OR 584" MAXIMUM SIZE, OR 586" MAXIMUM SIZE, OR 588" MAXIMUM SIZE, OR 590" MAXIMUM SIZE, OR 592" MAXIMUM SIZE, OR 594" MAXIMUM SIZE, OR 596" MAXIMUM SIZE, OR 598" MAXIMUM SIZE, OR 600" MAXIMUM SIZE, OR 602" MAXIMUM SIZE, OR 604" MAXIMUM SIZE, OR 606" MAXIMUM SIZE, OR 608" MAXIMUM SIZE, OR 610" MAXIMUM SIZE, OR 612" MAXIMUM SIZE, OR 614" MAXIMUM SIZE, OR 616" MAXIMUM SIZE, OR 618" MAXIMUM SIZE, OR 620" MAXIMUM SIZE, OR 622" MAXIMUM SIZE, OR 624" MAXIMUM SIZE, OR 626" MAXIMUM SIZE, OR 628" MAXIMUM SIZE, OR 630" MAXIMUM SIZE, OR 632" MAXIMUM SIZE, OR 634" MAXIMUM SIZE, OR 636" MAXIMUM SIZE, OR 638" MAXIMUM SIZE, OR 640" MAXIMUM SIZE, OR 642" MAXIMUM SIZE, OR 644" MAXIMUM SIZE, OR 646" MAXIMUM SIZE, OR 648" MAXIMUM SIZE, OR 650" MAXIMUM SIZE, OR 652" MAXIMUM SIZE, OR 654" MAXIMUM SIZE, OR 656" MAXIMUM SIZE, OR 658" MAXIMUM SIZE, OR 660" MAXIMUM SIZE, OR 662" MAXIMUM SIZE, OR 664" MAXIMUM SIZE, OR 666" MAXIMUM SIZE, OR 668" MAXIMUM SIZE, OR 670" MAXIMUM SIZE, OR 672" MAXIMUM SIZE, OR 674" MAXIMUM SIZE, OR 676" MAXIMUM SIZE, OR 678" MAXIMUM SIZE, OR 680" MAXIMUM SIZE, OR 682" MAXIMUM SIZE, OR 684" MAXIMUM SIZE, OR 686" MAXIMUM SIZE, OR 688" MAXIMUM SIZE, OR 690" MAXIMUM SIZE, OR 692" MAXIMUM SIZE, OR 694" MAXIMUM SIZE, OR 696" MAXIMUM SIZE, OR 698" MAXIMUM SIZE, OR 700" MAXIMUM SIZE, OR 702" MAXIMUM SIZE, OR 704" MAXIMUM SIZE, OR 706" MAXIMUM SIZE, OR 708" MAXIMUM SIZE, OR 710" MAXIMUM SIZE, OR 712" MAXIMUM SIZE, OR 714" MAXIMUM SIZE, OR 716" MAXIMUM SIZE, OR 718" MAXIMUM SIZE, OR 720" MAXIMUM SIZE, OR 722" MAXIMUM SIZE, OR 724" MAXIMUM SIZE, OR 726" MAXIMUM SIZE, OR 728" MAXIMUM SIZE, OR 730" MAXIMUM SIZE, OR 732" MAXIMUM SIZE, OR 734" MAXIMUM SIZE, OR 736" MAXIMUM SIZE, OR 738" MAXIMUM SIZE, OR 740" MAXIMUM SIZE, OR 742" MAXIMUM SIZE, OR 744" MAXIMUM SIZE, OR 746" MAXIMUM SIZE, OR 748" MAXIMUM SIZE, OR 750" MAXIMUM SIZE, OR 752" MAXIMUM SIZE, OR 754" MAXIMUM SIZE, OR 756" MAXIMUM SIZE, OR 758" MAXIMUM SIZE, OR 760" MAXIMUM SIZE, OR 762" MAXIMUM SIZE, OR 764" MAXIMUM SIZE, OR 766" MAXIMUM SIZE, OR 768" MAXIMUM SIZE, OR 770" MAXIMUM SIZE, OR 772" MAXIMUM SIZE, OR 774" MAXIMUM SIZE, OR 776" MAXIMUM SIZE, OR 778" MAXIMUM SIZE, OR 780" MAXIMUM SIZE, OR 782" MAXIMUM SIZE, OR 784" MAXIMUM SIZE, OR 786" MAXIMUM SIZE, OR 788" MAXIMUM SIZE, OR 790" MAXIMUM SIZE, OR 792" MAXIMUM SIZE, OR 794" MAXIMUM SIZE, OR 796" MAXIMUM SIZE, OR 798" MAXIMUM SIZE, OR 800" MAXIMUM SIZE, OR 802" MAXIMUM SIZE, OR 804" MAXIMUM SIZE, OR 806" MAXIMUM SIZE, OR 808" MAXIMUM SIZE, OR 810" MAXIMUM SIZE, OR 812" MAXIMUM SIZE, OR 814" MAXIMUM SIZE, OR 816" MAXIMUM SIZE, OR 818" MAXIMUM SIZE, OR 820" MAXIMUM SIZE, OR 822" MAXIMUM SIZE, OR 824" MAXIMUM SIZE, OR 826" MAXIMUM SIZE, OR 828" MAXIMUM SIZE, OR 830" MAXIMUM SIZE, OR 832" MAXIMUM SIZE, OR 834" MAXIMUM SIZE, OR 836" MAXIMUM SIZE, OR 838" MAXIMUM SIZE, OR 840" MAXIMUM SIZE, OR 842" MAXIMUM SIZE, OR 844" MAXIMUM SIZE, OR 846" MAXIMUM SIZE, OR 848" MAXIMUM SIZE, OR 850" MAXIMUM SIZE, OR 852" MAXIMUM SIZE, OR 854" MAXIMUM SIZE, OR 856" MAXIMUM SIZE, OR 858" MAXIMUM SIZE, OR 860" MAXIMUM SIZE, OR 862" MAXIMUM SIZE, OR 864" MAXIMUM SIZE, OR 866" MAXIMUM SIZE, OR 868" MAXIMUM SIZE, OR 870" MAXIMUM SIZE, OR 872" MAXIMUM SIZE, OR 874" MAXIMUM SIZE, OR 876" MAXIMUM SIZE, OR 878" MAXIMUM SIZE, OR 880" MAXIMUM SIZE, OR 882" MAXIMUM SIZE, OR 884" MAXIMUM SIZE, OR 886" MAXIMUM SIZE, OR 888" MAXIMUM SIZE, OR 890" MAXIMUM SIZE, OR 892" MAXIMUM SIZE, OR 894" MAXIMUM SIZE, OR 896" MAXIMUM SIZE, OR 898" MAXIMUM SIZE, OR 900" MAXIMUM SIZE, OR 902" MAXIMUM SIZE, OR 904" MAXIMUM SIZE, OR 906" MAXIMUM SIZE, OR 908" MAXIMUM SIZE, OR 910" MAXIMUM SIZE, OR 912" MAXIMUM SIZE, OR 914" MAXIMUM SIZE, OR 916" MAXIMUM SIZE, OR 918" MAXIMUM SIZE, OR 920" MAXIMUM SIZE, OR 922" MAXIMUM SIZE, OR 924" MAXIMUM SIZE, OR 926" MAXIMUM SIZE, OR 928" MAXIMUM SIZE, OR 930" MAXIMUM SIZE, OR 932" MAXIMUM SIZE, OR 934" MAXIMUM SIZE, OR 936" MAXIMUM SIZE, OR 938" MAXIMUM SIZE, OR 940" MAXIMUM SIZE, OR 942" MAXIMUM SIZE, OR 944" MAXIMUM SIZE, OR 946" MAXIMUM SIZE, OR 948" MAXIMUM SIZE, OR 950" MAXIMUM SIZE, OR 952" MAXIMUM SIZE, OR 954" MAXIMUM SIZE, OR 956" MAXIMUM SIZE, OR 958" MAXIMUM SIZE, OR 960" MAXIMUM SIZE, OR 962" MAXIMUM SIZE, OR 964" MAXIMUM SIZE, OR 966" MAXIMUM SIZE, OR 968" MAXIMUM SIZE, OR 970" MAXIMUM SIZE, OR 972" MAXIMUM SIZE, OR 974" MAXIMUM SIZE, OR 976" MAXIMUM SIZE, OR 978" MAXIMUM SIZE, OR 980" MAXIMUM SIZE, OR 982" MAXIMUM SIZE, OR 984" MAXIMUM SIZE, OR 986" MAXIMUM SIZE, OR 988" MAXIMUM SIZE, OR 990" MAXIMUM SIZE, OR 992" MAXIMUM SIZE, OR 994" MAXIMUM SIZE, OR 996" MAXIMUM SIZE, OR 998" MAXIMUM SIZE, OR 1000" MAXIMUM SIZE, OR 1002" MAXIMUM SIZE, OR 1004" MAXIMUM SIZE, OR 1006" MAXIMUM SIZE, OR 1008" MAXIMUM SIZE, OR 1010" MAXIMUM SIZE, OR 1012" MAXIMUM SIZE, OR 1014" MAXIMUM SIZE, OR 1016" MAXIMUM SIZE, OR 1018" MAXIMUM SIZE, OR 1020" MAXIMUM SIZE, OR 1022" MAXIMUM SIZE, OR 1024" MAXIMUM SIZE, OR 1026" MAXIMUM SIZE, OR 1028" MAXIMUM SIZE, OR 1030" MAXIMUM SIZE, OR 1032" MAXIMUM SIZE, OR 1034" MAXIMUM SIZE, OR 1036" MAXIMUM SIZE, OR 1038" MAXIMUM SIZE, OR 1040" MAXIMUM SIZE, OR 1042" MAXIMUM SIZE, OR 1044" MAXIMUM SIZE, OR 1046" MAXIMUM SIZE, OR 1048" MAXIMUM SIZE, OR 1050" MAXIMUM SIZE, OR 1052" MAXIMUM SIZE, OR 1054" MAXIMUM SIZE, OR 1056" MAXIMUM SIZE, OR 1058" MAXIMUM SIZE, OR 1060" MAXIMUM SIZE, OR 1062" MAXIMUM SIZE, OR 1064" MAXIMUM SIZE, OR 1066" MAXIMUM SIZE, OR 1068" MAXIMUM SIZE, OR 1070" MAXIMUM SIZE, OR 1072" MAXIMUM SIZE, OR 1074" MAXIMUM SIZE, OR 1076" MAXIMUM SIZE, OR 1078" MAXIMUM SIZE, OR 1080" MAXIMUM SIZE, OR 1082" MAXIMUM SIZE, OR 1084" MAXIMUM SIZE,