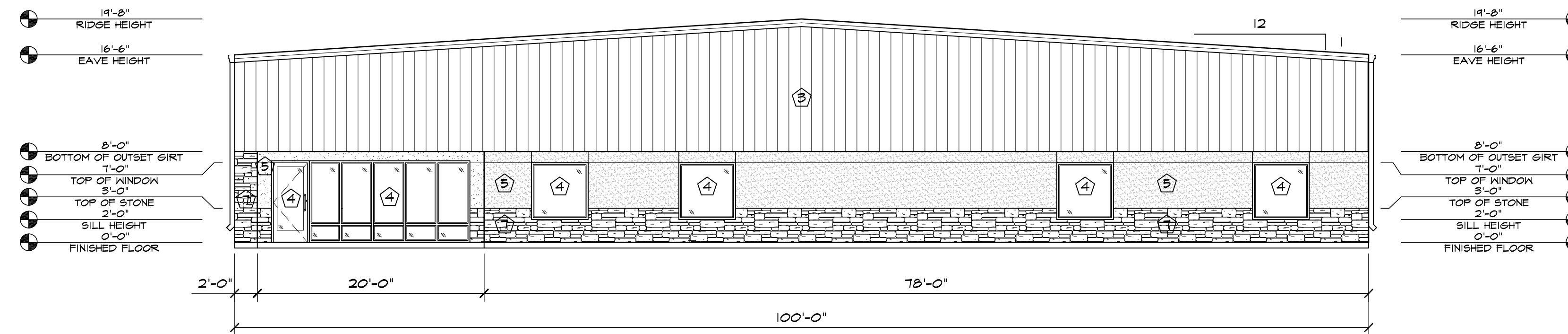
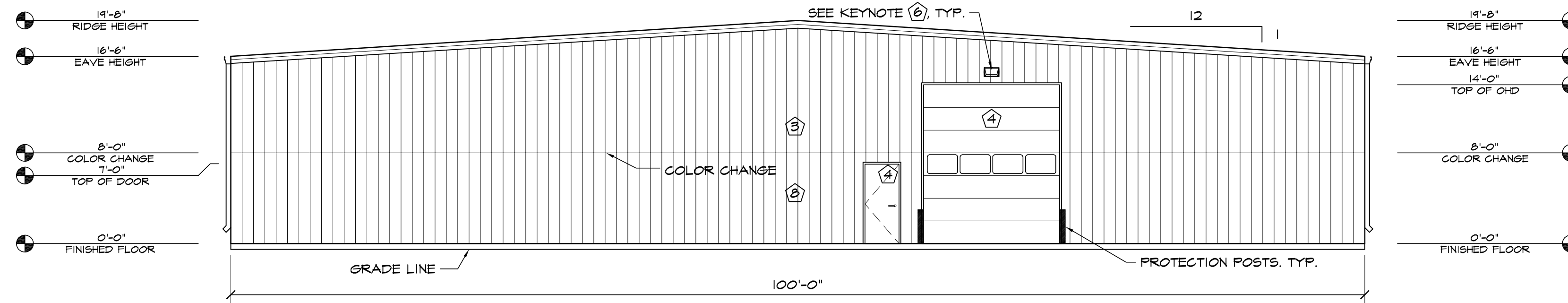


1 EAST ELEVATION  
SCALE: 1/8"=1'-0"

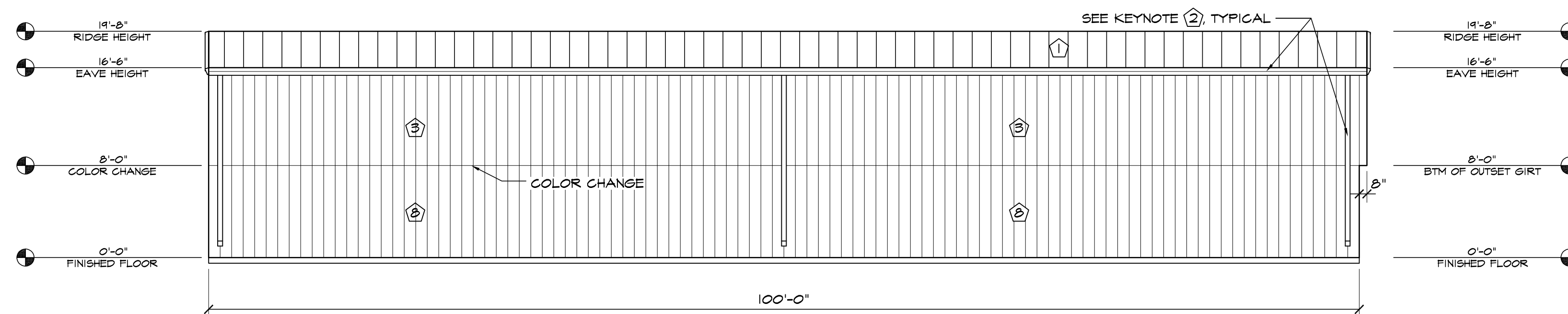
ELEVATION KEY NOTES	
1	PREFINISHED 24 GA. "PBR" METAL ROOF PANELS BY METAL BUILDING PROVIDER
2	PREFINISHED GUTTER & DOWNSPOUTS BY METAL BUILDING PROVIDER
3	PREFINISHED 26 GA. "PBR" METAL WALL PANELS BY METAL BUILDING PROVIDER
4	SEE SCHEDULES ON "A" SHEETS FOR ALL DOOR INFORMATION
5	3/4" STUCCO FINISH SYS. W/ EXPANSION JOINT-120 SF MAX AREA
6	WALL PACK LIGHT TOP OF LIGHT @ 15'-6" A.F.F. SEE ELECT. PLANS
7	STONE VENEER W/ 2" CAP INSTALLED W/ SCHLUTER TRIM
8	PREFINISHED 26 GA. "PBR" METAL WALL PANELS BY METAL BUILDING PROVIDER



2 SOUTH ELEVATION  
SCALE: 1/8"=1'-0"



3 NORTH ELEVATION  
SCALE: 1/8"=1'-0"



4 WEST ELEVATION  
SCALE: 1/8"=1'-0"

**HAMMERS CONSTRUCTION INC.**  
COMMERCIAL GENERAL CONTRACTORS SPECIALIZING IN DESIGN/BUILD

PRESIDENT: STEVE R. HAMMERS  
VICE PRES: DAVID J. HAMMERS  
1411 WOOLSEY HEIGHTS  
COLORADO SPRINGS, CO 80915  
(719) 570-1599 FAX (719) 570-7008  
www.hammersconstruction.com

THIS DRAWING CONTAINS MATERIAL & INFORMATION WHICH MAY NOT BE REPRODUCED WITHOUT WRITTEN CONSENT OF HAMMERS CONSTRUCTION, INC. THESE DRAWINGS ARE INTENDED TO BE USED ONLY BY HAMMERS CONSTRUCTION & ITS REPRESENTATIVES. THESE DRAWINGS HAVE NOT BEEN PREPARED FOR ANY OTHER PURPOSE THAN TO INDICATE THE GENERAL FEATURES AND PLACEMENT OF THE PROPOSED PROJECT. COPYRIGHT © 2020 HAMMERS CONSTRUCTION

GBP 2, 5 - 1

7716 GARY WATSON POINT  
COLORADO SPRINGS, CO 80915  
EL PASO COUNTY, COLORADO

DATE: SEPT. 18, 2020  
DRAWN BY: D. AQUINO  
PROJ. MGR: R. GREEN  
SCALE: SEE PLAN  
APPROVED BY:  
JOB NO: 1163

RESUBMITTALS: