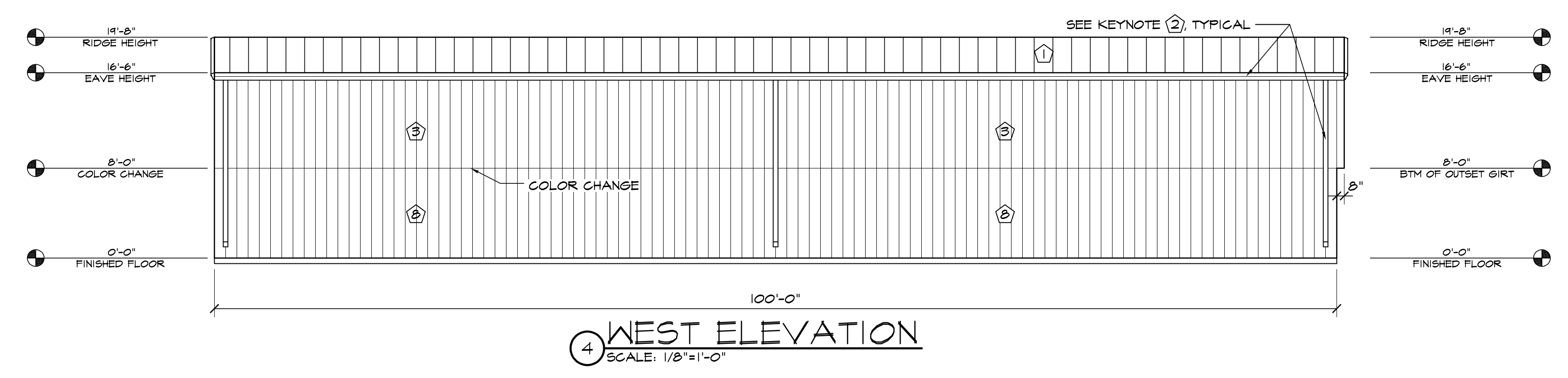
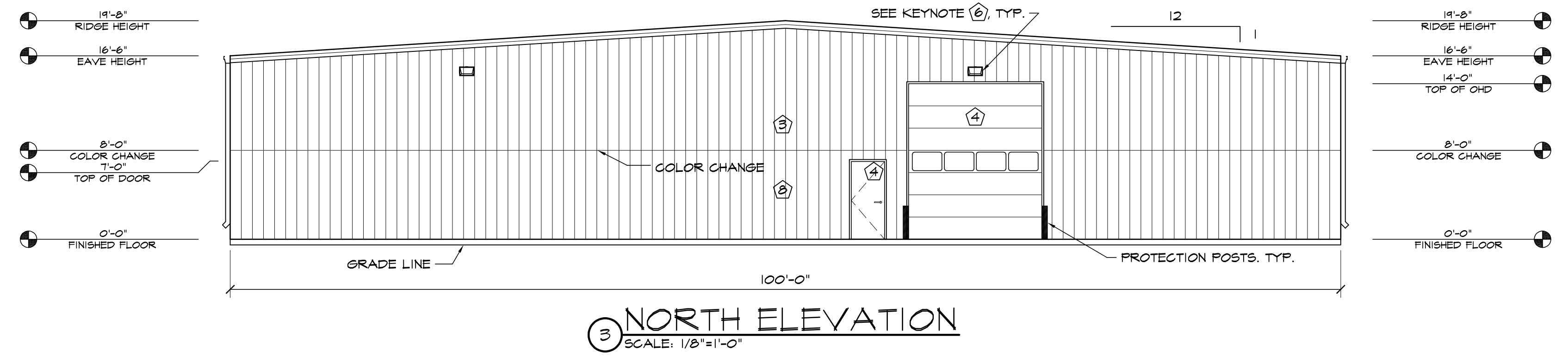
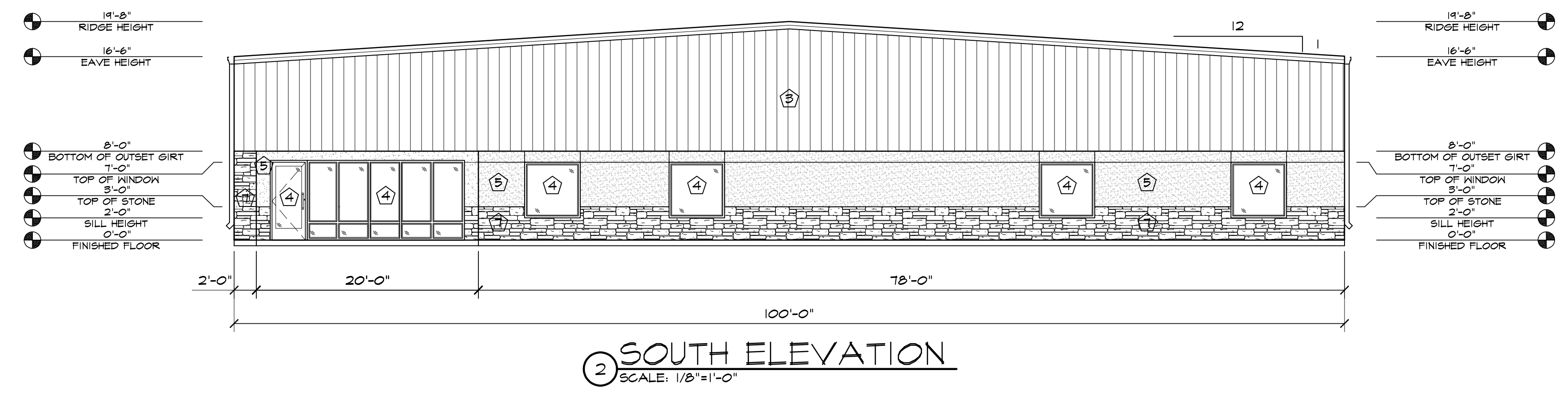


ELEVATION KEY NOTES	
1	PREFINISHED 24 GA. "PBR" METAL ROOF PANELS BY METAL BUILDING PROVIDER
2	PREFINISHED GUTTER & DOWNSPOUTS BY METAL BUILDING PROVIDER
3	PREFINISHED 26 GA. "PBR" METAL WALL PANELS BY METAL BUILDING PROVIDER
4	SEE SCHEDULES ON "A" SHEETS FOR ALL DOOR INFORMATION
5	3/4" STUCCO FINISH SYS. W/ EXPANSION JOINT-120 SF MAX AREA
6	WALL PACK LIGHT TOP OF LIGHT @ 15'-6" A.F.F. SEE ELECT. PLANS
7	STONE VENEER W/2 2" CAP INSTALLED W/ SCHLUTER TRIM
8	PREFINISHED 26 GA. "PBR" METAL WALL PANELS BY METAL BUILDING PROVIDER



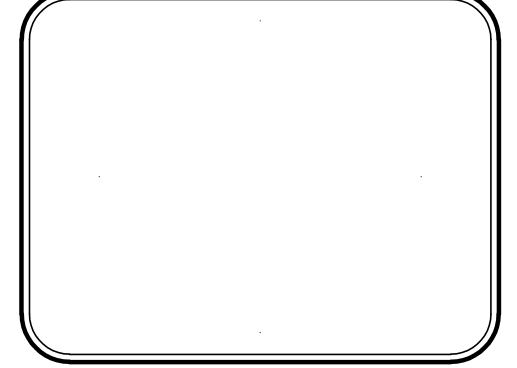
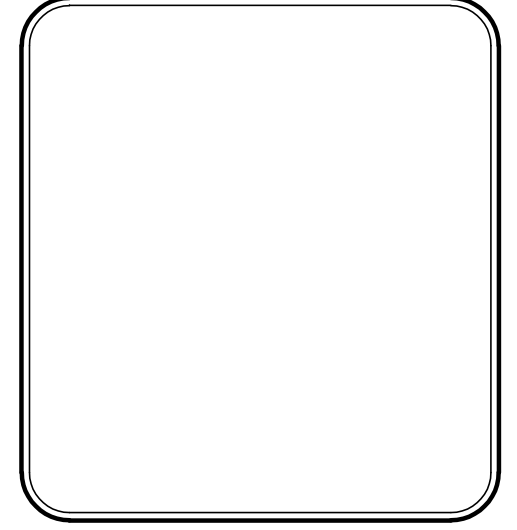
HAMMERS CONSTRUCTION INC.
COMMERCIAL GENERAL CONTRACTORS SPECIALIZING IN DESIGN/BUILD

PRESIDENT: STEVE R. HAMMERS
VICE PRES: DAVID J. HAMMERS
1411 WOOLSEY HEIGHTS
COLORADO SPRINGS, CO 80915
(719) 570-1599 FAX (719) 570-7008
www.hammersconstruction.com

THIS DRAWING CONTAINS MATERIAL & INFORMATION WHICH MAY NOT BE REPRODUCED WITHOUT WRITTEN CONSENT OF HAMMERS CONSTRUCTION, INC. THESE DRAWINGS ARE INTENDED TO BE USED ONLY BY HAMMERS CONSTRUCTION & ITS REPRESENTATIVES. THESE DRAWINGS HAVE NOT BEEN PREPARED FOR ANY OTHER PURPOSE THAN TO INDICATE THE GENERAL FEATURES AND PLACEMENT OF THE PROPOSED PROJECT. COPYRIGHT © 2020 HAMMERS CONSTRUCTION

CBP 2-1, LOT 5

7716 GARY WATSON POINT
COLORADO SPRINGS, CO 80915
EL PASO COUNTY, COLORADO



DATE: SEPT. 18, 2020
DRAWN BY: D. AQUINO
PROJ. MGR: R. GREEN
SCALE: SEE PLAN
APPROVED BY:
JOB NO: 1163

RESUBMITTALS:	
1	12/3/20-DP COMMENTS-10/16/20
2	
3	
4	
5	