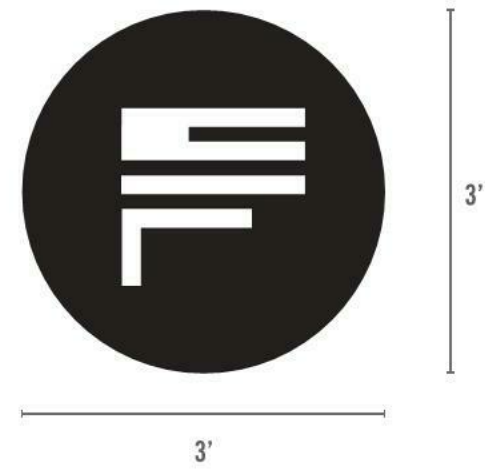


NOT ILLUMINATED.
APPROXIMATE SIZE: 3' x 3'



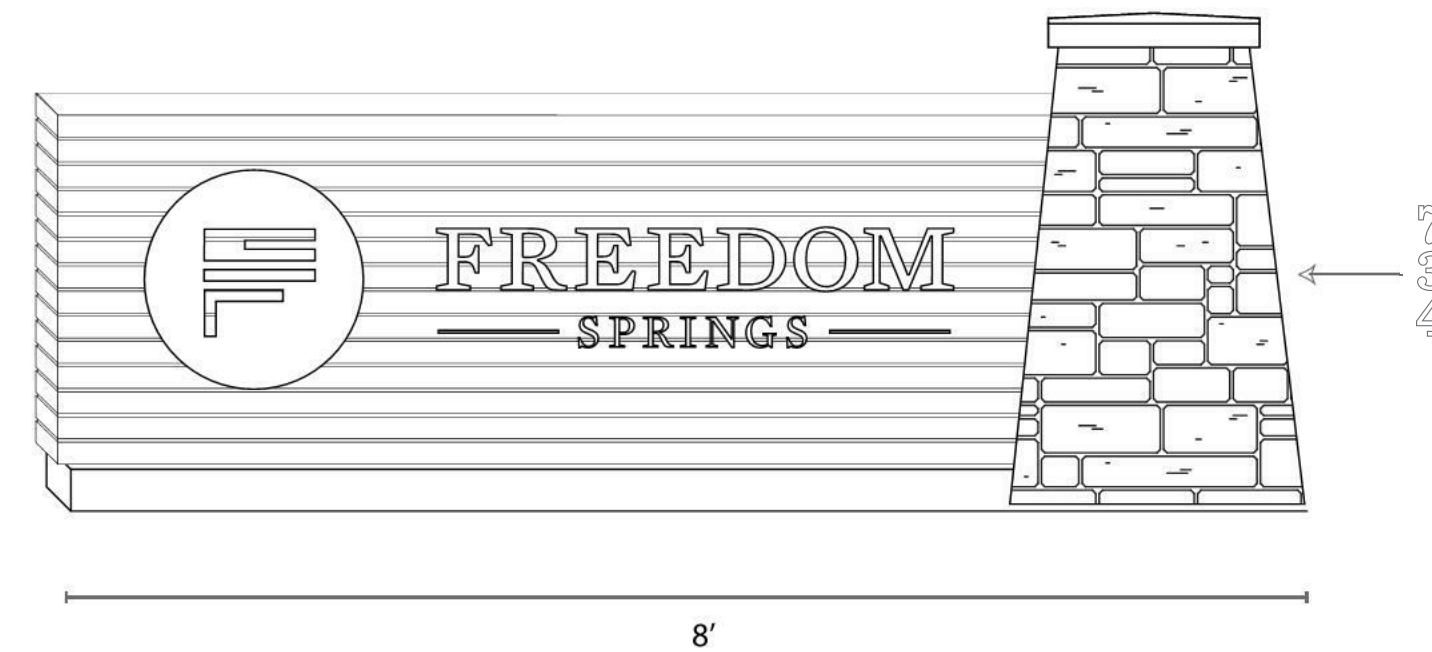
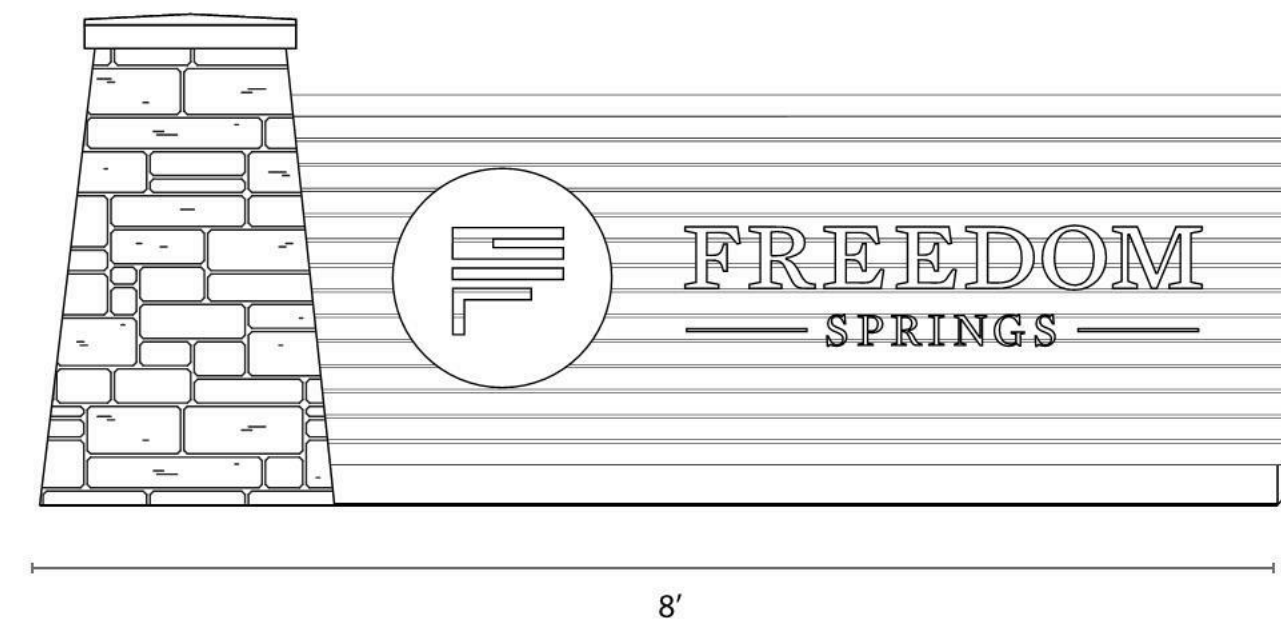
BUILDING PLACEMENT - EAST FACE



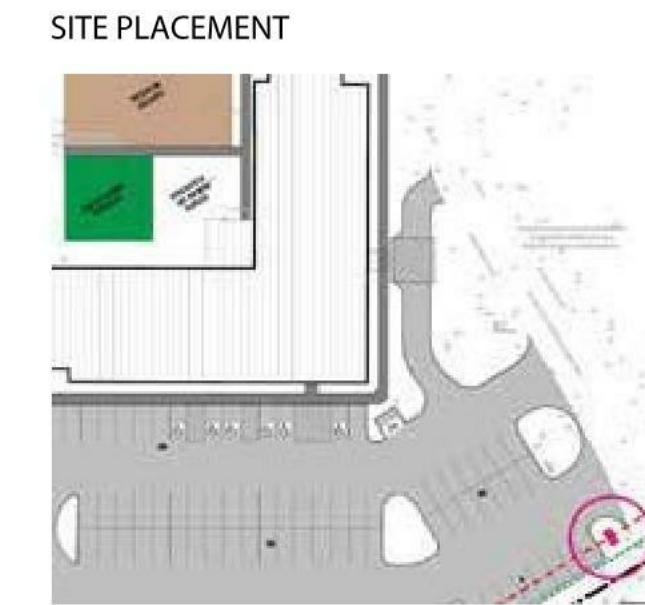
LED BOX/CHANNEL LETTERS WITH DARK SIDES. FRONT GLOW ONLY.
APPROXIMATE SIZE: 6'6" x 4'6"



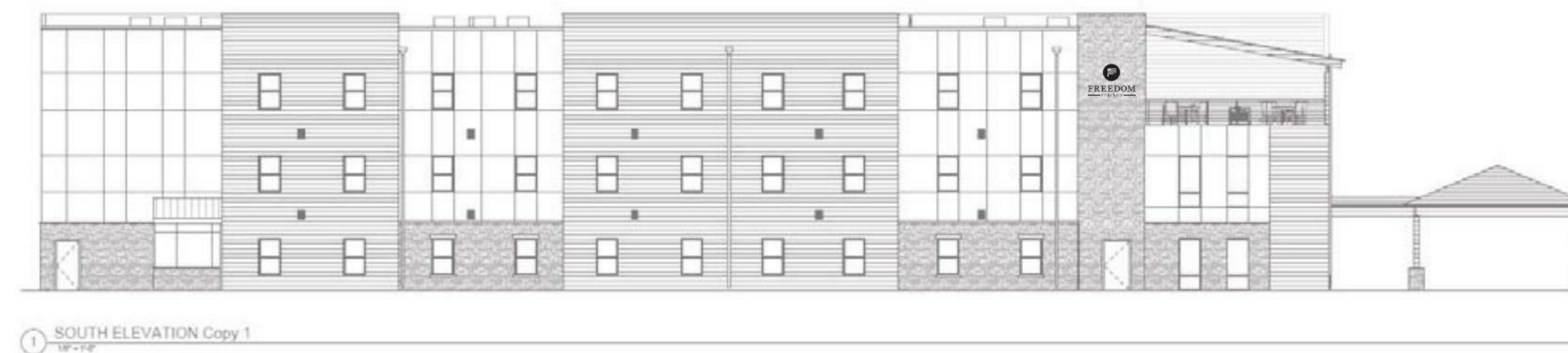
DOUBLE SIDED.
WOODEN SLATS ON CONCRETE BASE.
METAL CUTOUT LETTERING AND LOGO.
APPROXIMATE SIZE: 8' x 3' x 4.5'
STREET NUMBER ON OUTSIDE STONE AREA OF SIGN, FACING STREET.
SOLAR GROUND LIGHTING



SIDE VIEW



BUILDING PLACEMENT - SOUTH FACE



① SOUTH ELEVATION Copy
1/8" = 1'-0"

417-720-1577 | www.vecinogroup.com

Corporate Entity No. 20181126152

CONSULTANTS

Structural Engineer
HCA ENGINEERING, INC.
15 E. Pikes Peak Ave. Ste 100
Colorado Springs, CO 80903
Phone: (719)633-7784
briger@hcaengineering.com

andscape Architect
RLA, LLC
n C. Walsh, RLA
O. Box 354
lmer Lake, Colorado 80133
c: 719.640.9428
andarch@gmail.com

Civil Engineer
M.V.E., Inc.
103 Lelaray Street, Suite 200
Colorado Springs, Colorado 80909
Tel: 719.635.5736
Email: info@mvecivil.com

Land Planning and Surveying
and Development Consultants, Inc.
 98 Maizeland Road
 Colorado Springs, CO 80909
 Tel: (719) 528-6133, Ext. 109
 costetler@ldc-inc.com

FREEDOM SPRINGS
734 WESTERN DRIVE
COLORADO SPRINGS, EL PASO COUNTY,
COLORADO 80915

SION	DESCRIPTION	DATE
	PERMIT SET	3-5-18

This drawing and the details on it are the sole property of the Architect and may be used for this specific project only. It shall not be loaned, copied, or reproduced in whole or in part, or for any other purpose or project without the written consent of the Architect.



ARCHITECT
e No. ARC.00405076

The Professional Architect's seal affixed to this sheet applies only to the material and items shown on this sheet. All drawings, instruments, or other documents not exhibiting this seal shall not be considered prepared by the Architect, and this Architect expressly disclaims any and all responsibility for such

DATE: MARCH 5, 2018
PROJECT NUMBER: 17150
DRAWN BY:
COPYRIGHT: © 2018 VECINO DESIGN

SIGNAGE

G-010