

CONSULTANTS

**Structural Engineer**  
HDA ENGINEERING, INC.  
545 E. Pikes Peak Ave. Ste 100  
Colorado Springs, CO 80903  
Phone: (719)333-7784  
jkobrtger@hdaengineering.com

**Landscape Architect**  
JWLA, LLC  
Jon C. Walsh, RLA  
P.O. Box 354  
Palmer Lake, Colorado 80133  
Ph: 719.640.9428  
jwalandarch@gmail.com

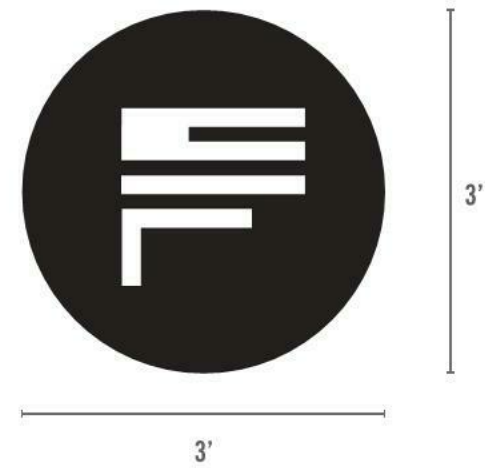
**Civil Engineer**  
M.V.E., Inc.  
1933 Lelahey Street, Suite 200  
Colorado Springs, Colorado 80909  
Ph: 719.635.5736  
mve@mvecivil.com

**Land Planning and Surveying**  
Land Development Consultants, Inc.  
3898 Matzeland Road  
Colorado Springs, CO 80909  
Ph: (719) 528-6133, Ext. 109  
dhostetter@ldc-inc.com

A secondary permit has been created for the signs. The cost is \$262 for the first sign and \$125 for each additional sign

CUTOUT METAL WALL SIGN ON EAST ELEVATION, AND FLAGPOLE IN EAST COURTYARD.

NOT ILLUMINATED.  
APPROXIMATE SIZE: 3' x 3'



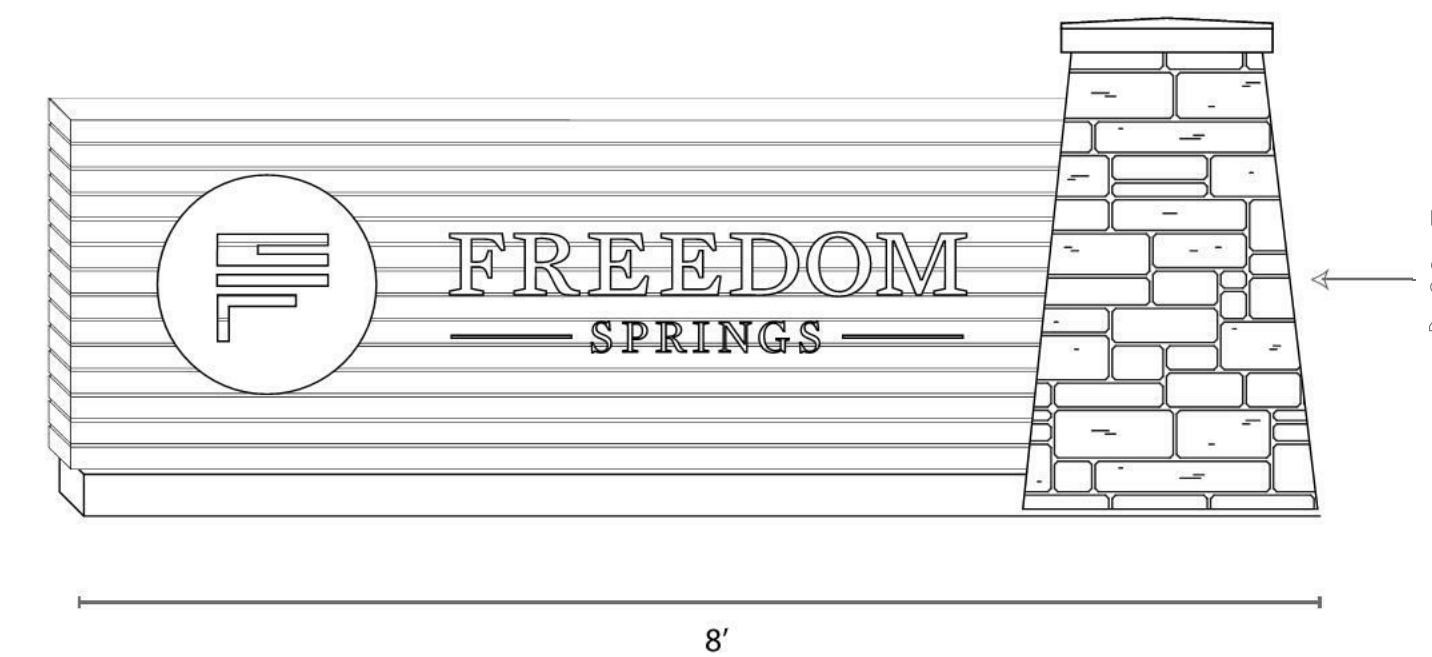
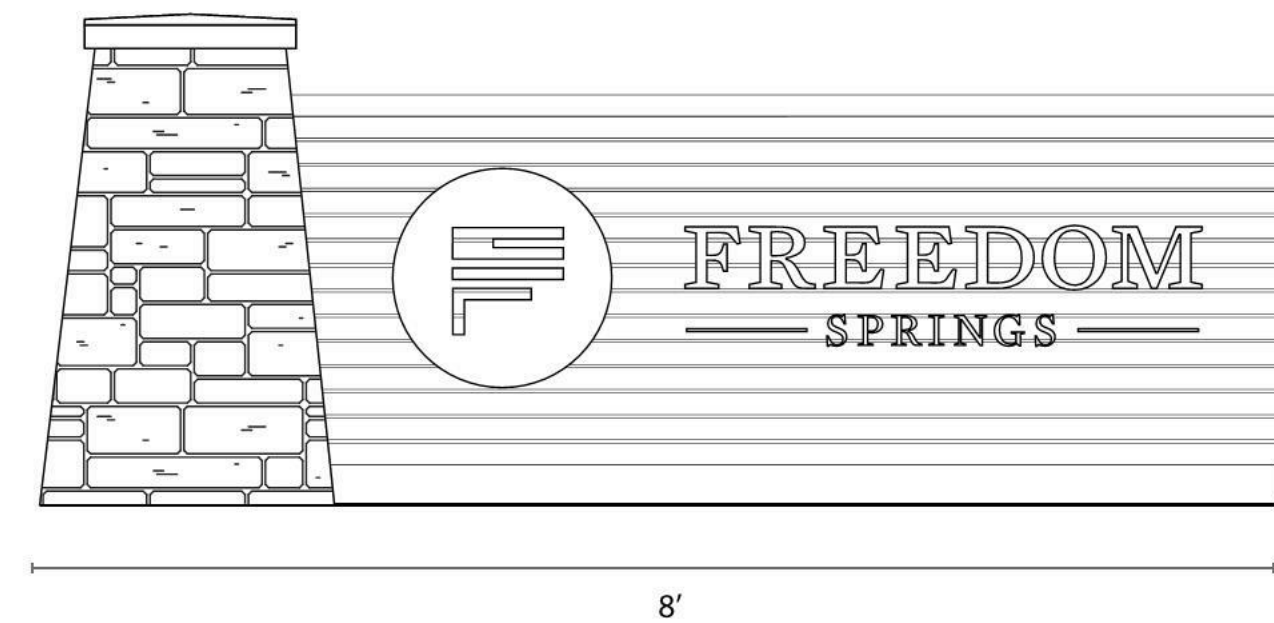
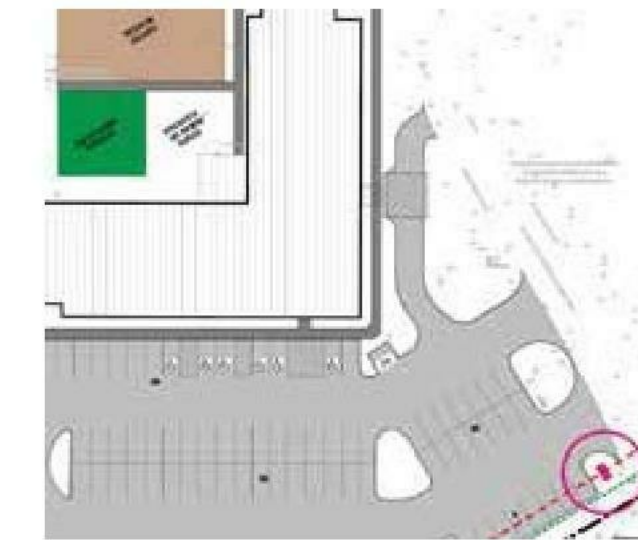
BUILDING PLACEMENT - EAST FACE



MONUMENT SIGN ON SE CORNER OF PROPERTY NEAR CORNER AT WESTERN DRIVE.

DOUBLE SIDED.  
WOODEN SLATS ON CONCRETE BASE.  
METAL CUTOUT LETTERING AND LOGO.  
APPROXIMATE SIZE: 8' x 3' x 4.5'  
STREET NUMBER ON OUTSIDE STONE AREA OF SIGN, FACING STREET.  
SOLAR GROUND LIGHTING

SITE PLACEMENT



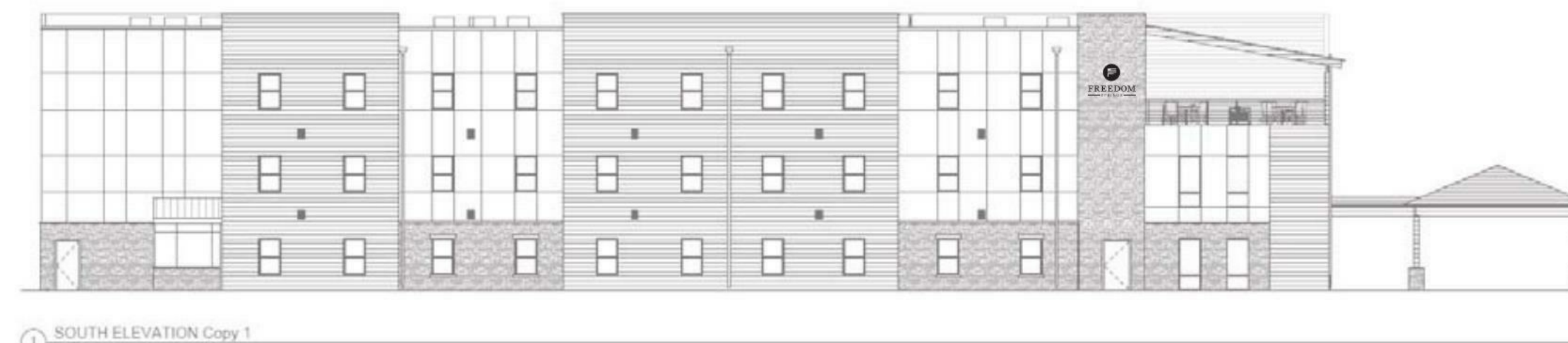
SIDE VIEW

ILLUMINATED WALL SIGN ON SOUTH ELEVATION "CHIMNEY"

LED BOX/CHANNEL LETTERS WITH DARK SIDES. FRONT GLOW ONLY.  
APPROXIMATE SIZE: 6'6" x 4'6"



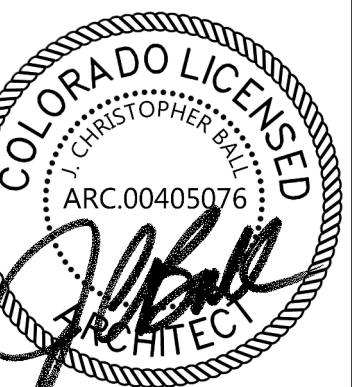
BUILDING PLACEMENT - SOUTH FACE



1 SOUTH ELEVATION Copy 1

REVISION	DESCRIPTION	DATE
	PERMIT SET	5-5-18

This drawing and the details on it are the sole property of the Architect and may be used for this specific project only. It shall not be copied, reproduced, or otherwise used in whole or in part, or for any other purpose or project without the written consent of the Architect.



03/07/2018  
ARCHITECT  
License No. ARC.00405076

The Professional Architect's seal affixed to this sheet applies only to the material and items shown on this sheet. All drawings, instruments, or other documents not exhibiting this seal shall not be considered prepared by the Architect, and the Architect expressly disclaims any and all responsibility for such plans, drawings, or documents not exhibiting this seal.

DATE: MARCH 5, 2018  
PROJECT NUMBER: 17150  
DRAWN BY:

COPYRIGHT: © 2018 VECINO DESIGN

SIGNAGE

G-010