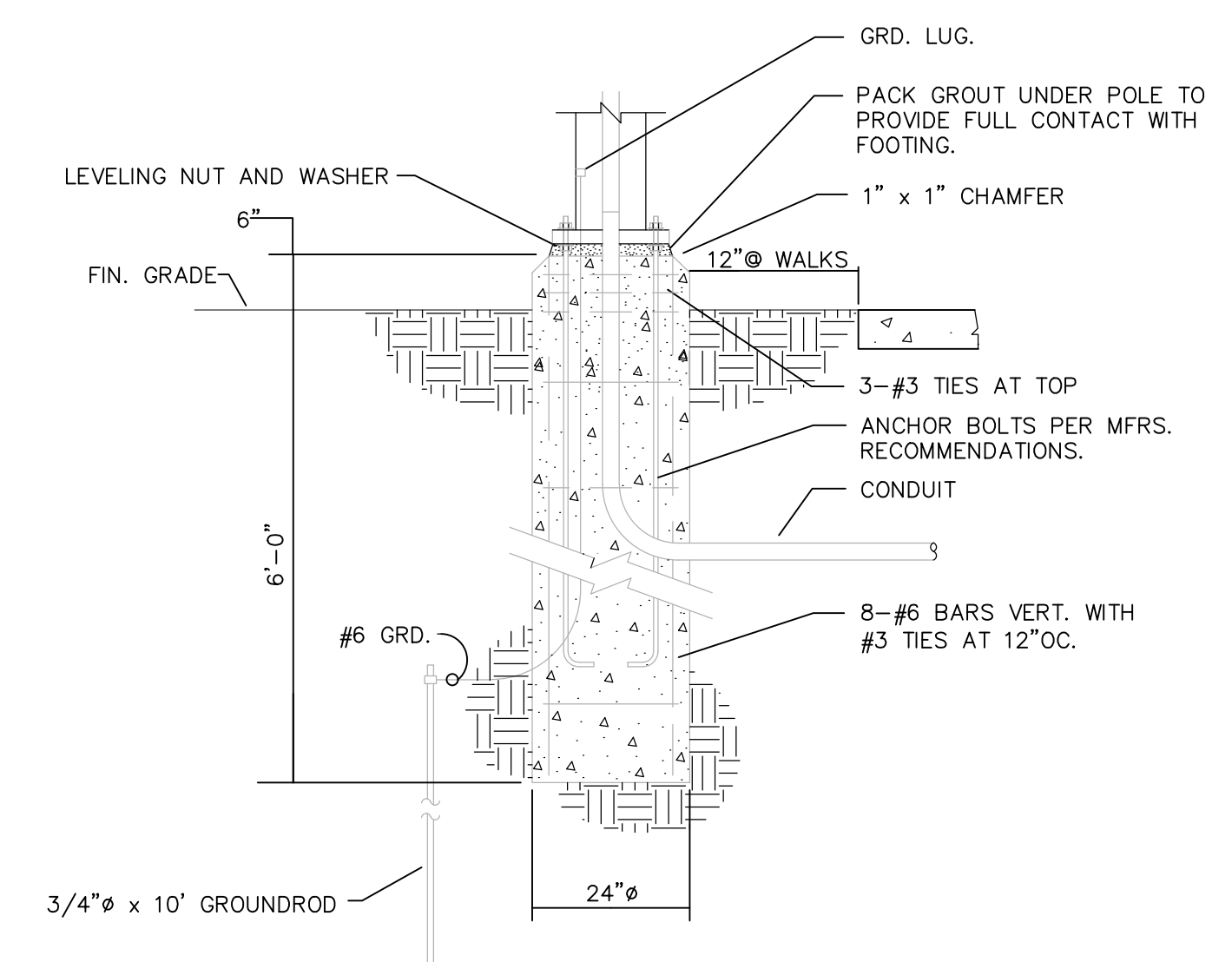
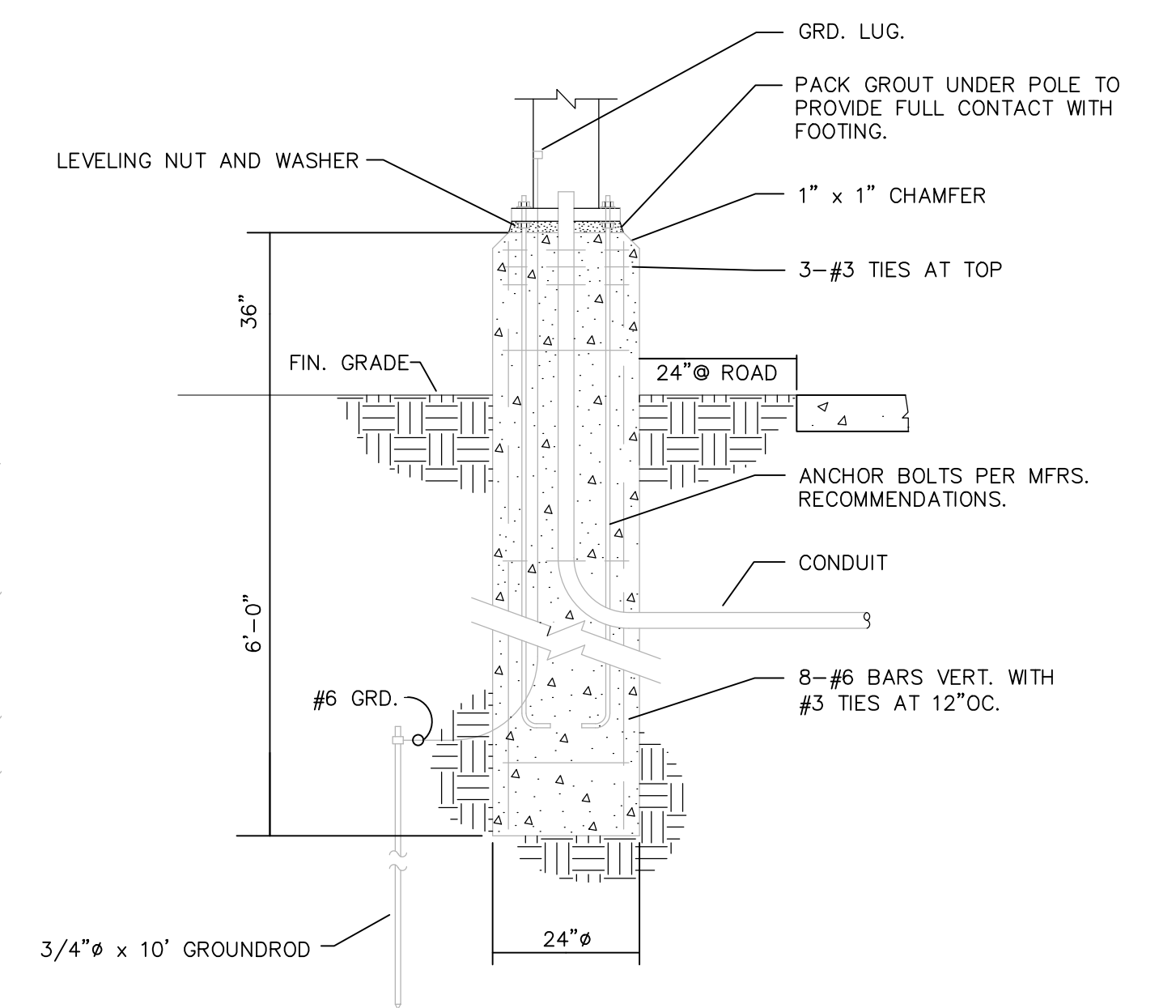


THIS DRAWING IS NOT TO BE USED FOR ANY ELECTRONIC SITE LAYOUT WORK. HARDSCAPE LAYOUT SHALL BE TAKEN FROM SITE CIVIL DRAWINGS. LIGHTING LOCATIONS SHOWN ARE RELATIVE TO HARDSCAPE.



LIGHT POLE BASE DETAIL (WALK ADJACENT) NOT TO SCALE 1 RME100



LIGHT POLE BASE DETAIL (VEHICLE ADJACENT) NOT TO SCALE 2 RME100

VECINO DESIGN
 305 W. Commercial St., Springfield, MO 65803
 417.720.1577 | www.vecinogroup.com

Corporate Entity No. 20181126152

CONSULTANTS

Structural Engineer
 HCDA ENGINEERING, INC.
 545 E. Pikes Peak Ave. Ste 100
 Colorado Springs, CO 80903
 Ph: (719) 633-7764
 jkobrfgr@hcdaengineering.com

Landscape Architect
 JWLA, LLC
 Jon C. Walsh, RLA
 PO Box 354
 Palmer Lake, Colorado 80133
 Ph: 719.659.9426
 jwalldarch@gmail.com

Civil Engineer
 M.V.E., Inc.
 1903 Lelaray Street, Suite 200
 Colorado Springs, Colorado 80909
 Ph: 719.635.5736
 mve@mvecivil.com

Land Planning and Surveying
 Land Development Consultants, Inc.
 3898 Maizeland Road
 Colorado Springs, CO 80909
 Ph: (719) 528-6133
 dhossteler@ldc-inc.com

FREEDOM SPRINGS
 734 WESTERN DRIVE
 COLORADO SPRINGS, EL PASO COUNTY,
 COLORADO, 80915

REVISION	DESCRIPTION	DATE
PERMIT SET		03-05-18
ADDENDUM 02		10-26-18
ADDENDUM 03		11-02-18
ADDENDUM 05		01-11-19

This drawing and the details on it are the sole property of the Design Professional of Record and may be used for this specific project only. It shall not be loaned, copied, or reproduced in whole or in part, or for any other purpose or project without their written consent.

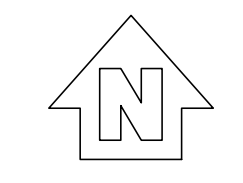


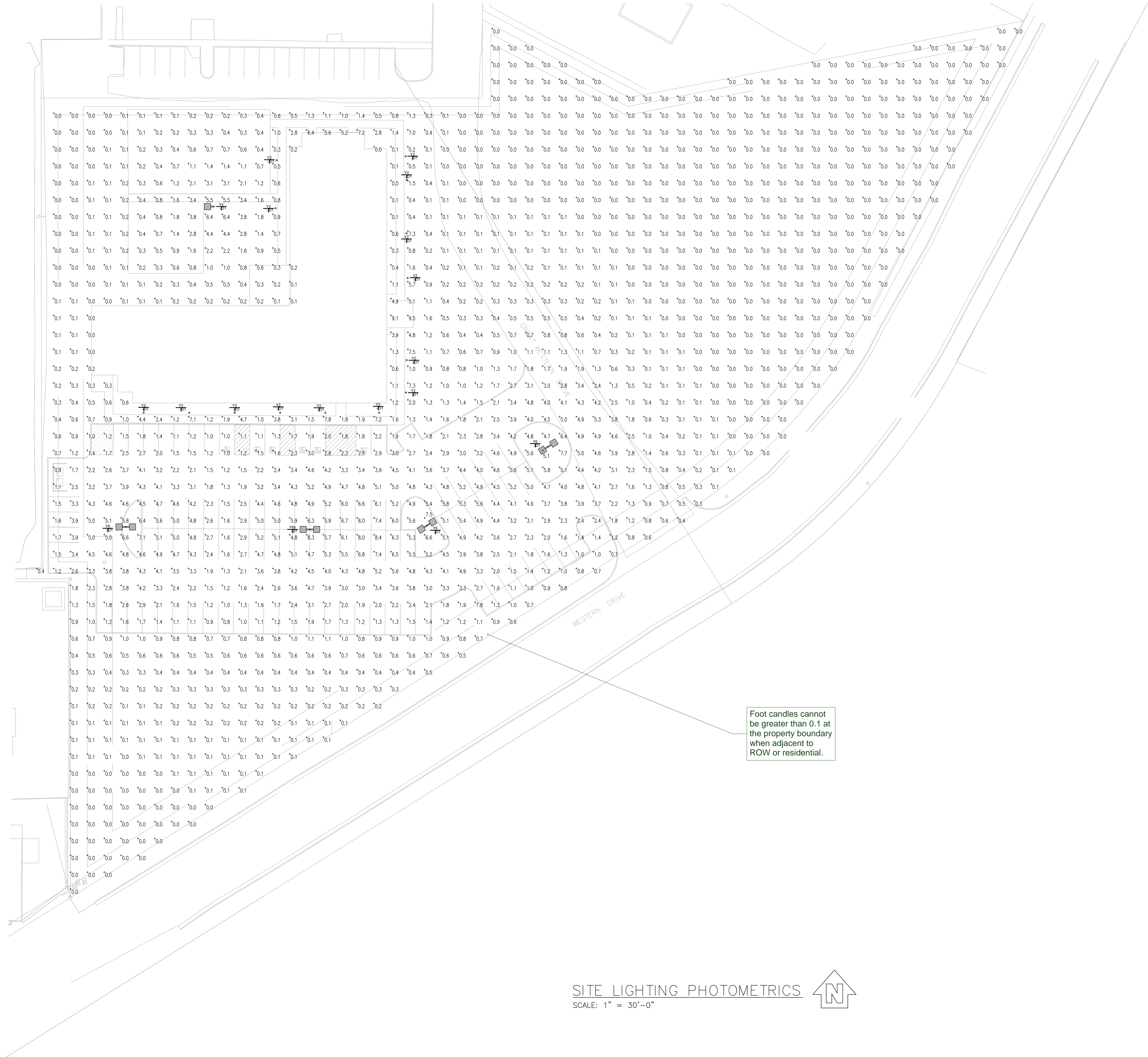
01/11/2019
 Walter Warren - PE
 CO 0051474

The Professional's seal affixed to the sheet applies only to the material and items shown on this sheet. All drawings, instruments, or other documents not exhibiting this seal shall not be considered prepared by the Professional, and the Professional expressly disclaims any and all responsibility for such plans, drawings, or documents not exhibiting the seal.

PROJECT NUMBER: 17159
 DRAWN BY: WAU
 COPYRIGHT: © VECINO DESIGN, LLC

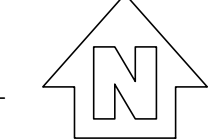
PME UTILITY PLAN
PME-100





SITE LIGHTING PHOTOMETRICS

SCALE: 1" = 30'-0"



CONSULTANTS

Structural Engineer
HCDA ENGINEERING, INC.
545 E. Pikes Peak Ave. Ste 100
Colorado Springs, CO 80903
Ph: (710) 633-7764
jkobriger@hcdaengineering.com

Landscape Architect
JWA, LLC
Jon C. Walsh, RLA
PO Box 354
Palmer Lake, Colorado 80133
Ph: 719.659.9426
jwalldarch@gmail.com

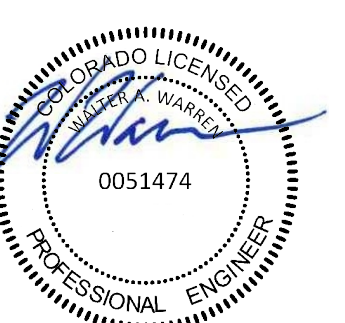
Civil Engineer
M.V.E., Inc.
1903 Lelaray Street, Suite 200
Colorado Springs, Colorado 80909
Ph: 719.635.5736
mve@mvecivil.com

Land Planning and Surveying
Land Development Consultants, Inc.
3898 Maizeland Road
Colorado Springs, CO 80909
Ph: (710) 528-6133
dhostetter@ldc-inc.com

FREEDOM SPRINGS
734 WESTERN DRIVE
COLORADO SPRINGS, EL PASO COUNTY,
COLORADO, 80915

REVISION	DESCRIPTION	DATE
	PERMIT SET	03-05-18
▲	ADDENDUM 02	10-26-18
▲	ADDENDUM 03	11-02-18
▲	ADDENDUM 05	01-11-19

This drawing and the details on it are the sole property of the Design Professional of Record and may be used for this specific project only. It shall not be loaned, copied, or reproduced in whole or in part, or for any other purpose or project without their written consent.



01/11/2019
Walter Warren - PE
CO 0051474

The Professional's seal affixed to the sheet applies only to the material and items shown on this sheet. It does not constitute an endorsement or approval of any drawings, instruments, or other documents not prepared by the Professional, and the Professional assumes no responsibility for such plans, drawings, or documents without their written consent.

PROJECT NUMBER: 17190
DRAWN BY: WAW
COPYRIGHT: © VECINO DESIGN, LLC

SITE LIGHTING PHOTOMETRICS
ESL-100

SUPPLEMENTAL SPECIFICATIONS:

FIRE ALARM SYSTEM:
See specifications manual.

SECURITY SYSTEMS:

- A. General:
- Furnish and install a complete operating access building security system as described herein and as shown on drawings. The system shall be complete with all necessary materials and controls required for operation whether or not such materials and controls are specified or shown. Shop drawings shall be provided to the Architect for confirmation of location of all cameras.
 - CCTV devices:
 - CCTV cameras shall be located where shown to monitor entry and exit of the building, and building exterior. Monitors, recorder and other gear shall be located in Room 113 near the MDF. Coordinate location with fire alarm, HVAC, and other nearby trades.
 - IP camera (1.3MP minimum resolution, color).
 - Monitor, 24" 16:9 LED monitor, 1920x1080 resolution
 - Network Video Recorder, 30 days storage
 - Network switch
 - Battery backup
 - Power for security systems shall be provided through the specified house panel circuit for security. See electrical panel diagrams.
 - Security systems shall be provided with stand-alone standby battery or circuit with inverter to provide sufficient power for 24 hours of operation.

ACCESS AND DOOR CONTROL SYSTEMS:

- A. General:
- Furnish and install a complete operating access control system as described herein and as shown on drawings. The system shall be complete with all necessary materials and controls required for operation whether or not such materials and controls are specified or shown. Shop drawings shall be provided to the Architect for confirmation of location of all access and door control systems.
 - Access control shall be located at all building entrances as indicated on the drawings. Controls at exterior pedestrian locations shall include proximity sensor. Call box shall be located at main entry without remote unlock capability.
 - Magnetic hold opens shall be as specified with door hardware. Power for magnetic hold-opens shall be provided from the nearest public unswitched, non-GFCI, non-AFCI, receptacle circuit.
 - Power for access control systems shall be provided through the specified house panel circuit for Access Control. See electrical panel diagrams.
 - Access control systems shall be provided with stand-alone standby battery or circuit with inverter to provide sufficient power for 24 hours of operation.

PUBLIC WIFI SYSTEM:

Furnish and install a complete operating public WIFI system providing wireless access points, powered by POE, where shown and as required to provide service to specified areas on drawings.

2

Poles shall not exceed 15' unless in a parking area where than shall not exceed 20 feet, unless an alternative lighting proposal is requested in the Letter of Intent

2

LIGHT FIXTURE SCHEDULE							
TAG	LOCATION	MODEL #	FINISH	WATTS	LUMENS	MOUNTING	NOTES
A	APARTMENTS	PROGRESS P8022-28-30K	WH	15W	1000	CEILING	
C1	CEILING FAN	PROGRESS P2574-2030K	BZ			CEILING	WET RATED
D1	LIVING ROOM	PROGRESS P3612-0930K9	WH	44.5W	3745	CEILING	22"DIA, 2700K
D2	BEDROOM	PROGRESS P3611-093069	WH	29.5W	2330	CEILING	15"DIA, 2700K
E	MECHANICAL CLOSET	LEVITON 8829-CW4		8.5W		WALL	KEYLESS LAMP HOLDER W/ LED BULB OVER DOOR. PROTECTIVE CAGE REQ'D AT ELEVATOR PIT.
F	CLOSETS	PROGRESS P8022-28-30K	WH	15W	1000	CEILING	
G2	BATH VANITY	PROGRESS P2094-0930K9	PC	35W	3000LM	WALL	38" LENGTH
H	BATH	PROGRESS P8022-82-30K	BN	15W	1000LM	CEILING	
J	KITCHEN PENDANT	PROGRESS P5092-09	BN	9.5W	915LM	PENDANT	FROSTED GLASS
K	CORRIDORS	PROGRESS P8022-28-30K	WH	15W	1000LM	CEILING	3000K
L	NOT USED						
M	HEARING IMPAIRED APARTMENTS	NUTONE LA11WH, C907 XFORM, HARRIS DOORBELL STROBE, SPORE TDB-N-AL BUTTON	WH	-	-	WALL	BUTTON STRIKE SIDE AT 48", CHIME/STROBE VISIBLE TO LIVING ROOM.
N1	OFFICE	LUMENOPTIX LUZ-22-40-EA8-35K-DU1-KS	WH	40W	4100LM	SURFACE CEILING	2X2 LED PANEL W/ SURFACE MT KIT
Q	CLOSETS	LEVITON 9864-LED		8.5W		CEILING	MOTION, NO SWITCH
R	UTILITY	COLUMBIA CSL4-4035	WH	36W	4000LM	SURFACE	48" STRIP LIGHT W/ HANGER FOR 9' MAX MOUNTING HEIGHT
S	CLASSROOM	FINELITE HP2-D-4-H-830-F-120V-FA50-SC-C*	WH	26W	2600LM	PENDANT	48" LINEAR
Y1	EXTERIOR CANOPY	HINKLEY 2302KZ-LED ARIA	BZ	15W		PENDANT	
Y2	EXTERIOR BOLLARD	H.E.WILLIAMS OSA6R-L20/840-AC-FT-DBZ-AB-DRV-UNV	BK	18W	2000LM	GROUND	
Y3	EXTERIOR WALL	WAC WS-W5318	BZ	15W	1218LM	WALL	VERIFY MT HEIGHT
Y4	YARD LITE	KENALL TPDPT26-5R-5S-FTA-DB-160L30K-DV-DS34 0-500V250-OT-HH-FBCP-AB-DB-(VAL,KEN ALL)	BK	150W	13860LM	POLE	3000K, 25' POLE
Y5	PARKING	BEACON VP-S/30NB-70/3K/T2/UNV/RA/DBT, BEACON SSSB16-40A-1-1B4-DBT	BK	54.7W	6530LM	POLE	3000K, 25' POLE
Y6	PARKING	BEACON VP-L/96NB-280/3K/T3/UNV/RA/DBT, BEACON SSSB25-50B-2-S2-DB	BK	215W	24084LM	POLE	DUAL HEAD, 3000K, 25' POLE
Y6b	PARKING	BEACON VP-L/96NB-280/3K/T3/UNV/RA/DBT, BEACON SSSB22-50B-2-S2-DB	BK	215W	24084LM	POLE	DUAL HEAD, 3000K, CUSTOM 22' POLE HEIGHT.
Y7	WALLPAK	BEACON TRV/D/24NB/27/3K/T2/UNV/BL	BK	27W		WALL	
EX1	EMERGENCY	COMPASS CCG	WH			UNIVERSAL	EMERGENCY/EXIT
EX2	EMERGENCY	COMPASS CEG + REMOTE	WH			UNIVERSAL	EMERGENCY/EXIT WITH REMOTE HEAD
EX3	EMERGENCY	COMPASS CCGRC	WH	1.4W		WALL 7.5'	2 HEAD EMERG. LIGHT
EM1	EMERGENCY	COMPASS CU2 + REMOTE	WH	1.4W		WALL 7.5'	2HEAD W/ REMOTE
EM2	EMERGENCY	COMPASS CU2RC	WH	14W		WALL 7.5'	HIGH OUTPUT
EM3	EMERGENCY	DUAL EVHC6					

ALL FIXTURES SHALL BE 3000K COLOR TEMP. 2700K TO 3500K IS ACCEPTED WHERE 3000K IS NOT AVAILABLE.
EXHAUST FANS, HEATERS, AND OTHER MECHANICAL EQUIPMENT BY MC. CONNECTION BY EC. SEE M300 FOR SPECS.
SMOKE & CO ALARM - SEE SPECIFICATIONS
DWELLING UNIT FIXTURES REQUIRING SCREW-IN LAMPS SHALL USE CREE A19, 2700K, 9.5W, 915LM, OMNIDIRECTIONAL, 80CRI MIN.

CONSULTANTS

Structural Engineer
HCDA ENGINEERING, INC.
545 E. Pikes Peak Ave. Ste 100
Colorado Springs, CO 80903
Ph: (710) 633-7784
jkobriger@hcdengineering.com

Landscape Architect
JWA, LLC
Jon C. Walsh, RLA
PO Box 354
Palmer Lake, Colorado 80133
Ph: 719.659.4428
jwalndarch@gmail.com

Civil Engineer
M.V.E., Inc.
1903 Lelaray Street, Suite 200
Colorado Springs, Colorado 80909
Ph: (710) 528-6133
mve@mvecivil.com

Land Planning and Surveying
Land Development Consultants, Inc.
3898 Maizeland Road
Colorado Springs, CO 80909
Ph: (710) 528-6133
dhostetler@ldc-inc.com

FREEDOM SPRINGS
734 WESTERN DRIVE
COLORADO SPRINGS, EL PASO COUNTY,
COLORADO, 80915

REVISION	DESCRIPTION	DATE
	PERMIT SET	03-05-18
2	ADDENDUM 02	10-26-18

This drawing and the details on it are the sole property of the Design Professional of Record and may be used for this specific project only. It shall not be copied, reprinted or reproduced in whole or in part, or for any other purpose or project without their written consent.



10/25/2018
Walter Warren - PE
CO 0051474

The Professional's seal affixed to this sheet applies only to the material and items shown on this sheet. It does not constitute an endorsement or approval of any drawings, instruments, or other documents not prepared by the Professional, and the Professional assumes no responsibility for such plans, drawings, or documents not exhibiting this seal.

PROJECT NUMBER: 17150
DRAWN BY: WW

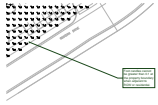
COPYRIGHT © VECINO DESIGN, LLC

SCHEDULES

E-300

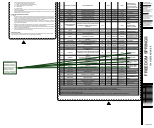
Markup Summary

dsdsevigny (2)



Subject: Callout
Page Label: 2
Lock: Locked
Author: dsdsevigny
Date: 1/28/2019 11:22:56 AM
Color: ■

Foot candles cannot be greater than 0.1 at the property boundary when adjacent to ROW or residential.



Subject: Callout
Page Label: 3
Lock: Locked
Author: dsdsevigny
Date: 1/28/2019 11:22:56 AM
Color: ■

Poles shall not exceed 15' unless in a parking area where than shall not exceed 20 feet, unless an alternative lighting proposal is requested in the Letter of Intent