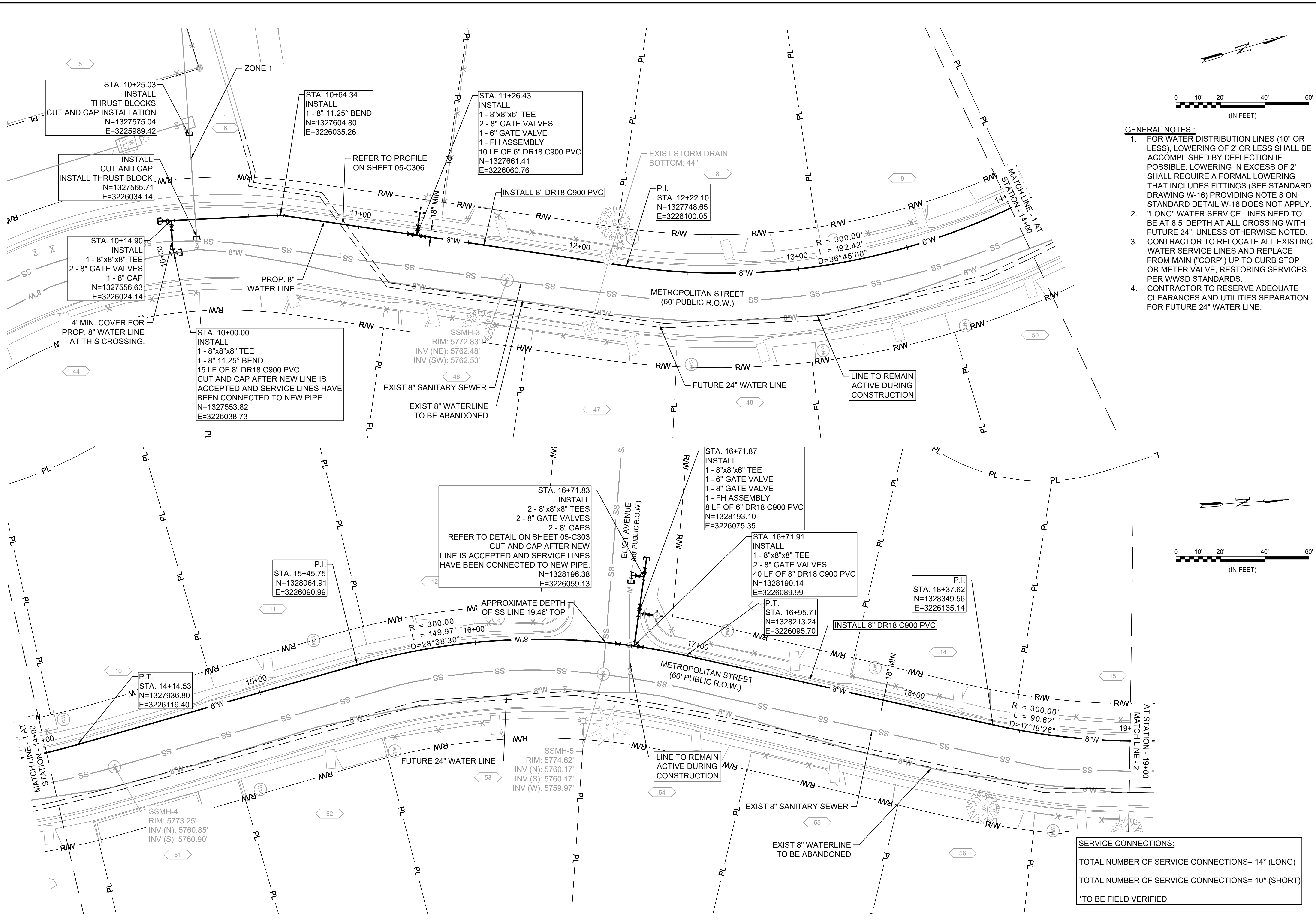



File: L:\2021\12\12\2110 - WWSDD UW2E CMARDrawings\WWSDD UM CMAR 8 INCH - 05-C301.dwg Last Save: 9/29/2022 9:38 AM Last saved by: F.Chavez
Last plotted by: Chavez, Francisco J. (Paco) Plot Style: AECmonochrome.ctb Plot Scale: 1/2"=1'-0" Plot Date: 9/29/2022 3:28 PM Plotter used: None



- GENERAL NOTES:**
- FOR WATER DISTRIBUTION LINES (10" OR LESS), LOWERING OF 2' OR LESS SHALL BE ACCOMPLISHED BY DEFLECTION IF POSSIBLE. LOWERING IN EXCESS OF 2' SHALL REQUIRE A FORMAL LOWERING THAT INCLUDES FITTINGS (SEE STANDARD DRAWING W-16) PROVIDING NOTE 8 ON STANDARD DETAIL W-16 DOES NOT APPLY.
 - "LONG" WATER SERVICE LINES NEED TO BE AT 8.5' DEPTH AT ALL CROSSING WITH FUTURE 24", UNLESS OTHERWISE NOTED.
 - CONTRACTOR TO RELOCATE ALL EXISTING WATER SERVICE LINES AND REPLACE FROM MAIN ("CORP") UP TO CURB STOP OR METER VALVE, RESTORING SERVICES, PER WWSDD STANDARDS.
 - CONTRACTOR TO RESERVE ADEQUATE CLEARANCES AND UTILITIES SEPARATION FOR FUTURE 24" WATER LINE.



© 2022 GARVER, LLC
THIS DOCUMENT, ALONG WITH THE IDEAS AND DESIGNS CONVEYED HEREIN, SHALL BE CONSIDERED INSTRUMENTS OF PROFESSIONAL SERVICE AND ARE PROPERTY OF GARVER, LLC. ANY USE, REPRODUCTION, OR DISTRIBUTION OF THIS DOCUMENT, ALONG WITH THE IDEAS AND DESIGNS CONTAINED HEREIN, IS PROHIBITED UNLESS AUTHORIZED IN WRITING BY GARVER, LLC OR EXPLICITLY ALLOWED IN THE GOVERNING PROFESSIONAL SERVICES AGREEMENT FOR THIS WORK.

NOT FOR CONSTRUCTION

THIS DOCUMENT IS RELEASED FOR THE PURPOSE OF INTERIM REVIEW UNDER THE AUTHORITY OF PAUL M. BANSCHACH, P.E. 0059830 ON JUNE 10, 2022. THIS DOCUMENT IS NOT TO BE USED FOR CONSTRUCTION, BIDDING, OR PERMITTING PURPOSES.

WIDEFIELD WATER AND SANITATION DISTRICT
WIDEFIELD, COLORADO

8" WATER DISTRIBUTION MAIN REPLACEMENT ON METROPOLITAN STREET

PLAN AND PROFILE
(STA. 10+00 TO STA. 19+00)

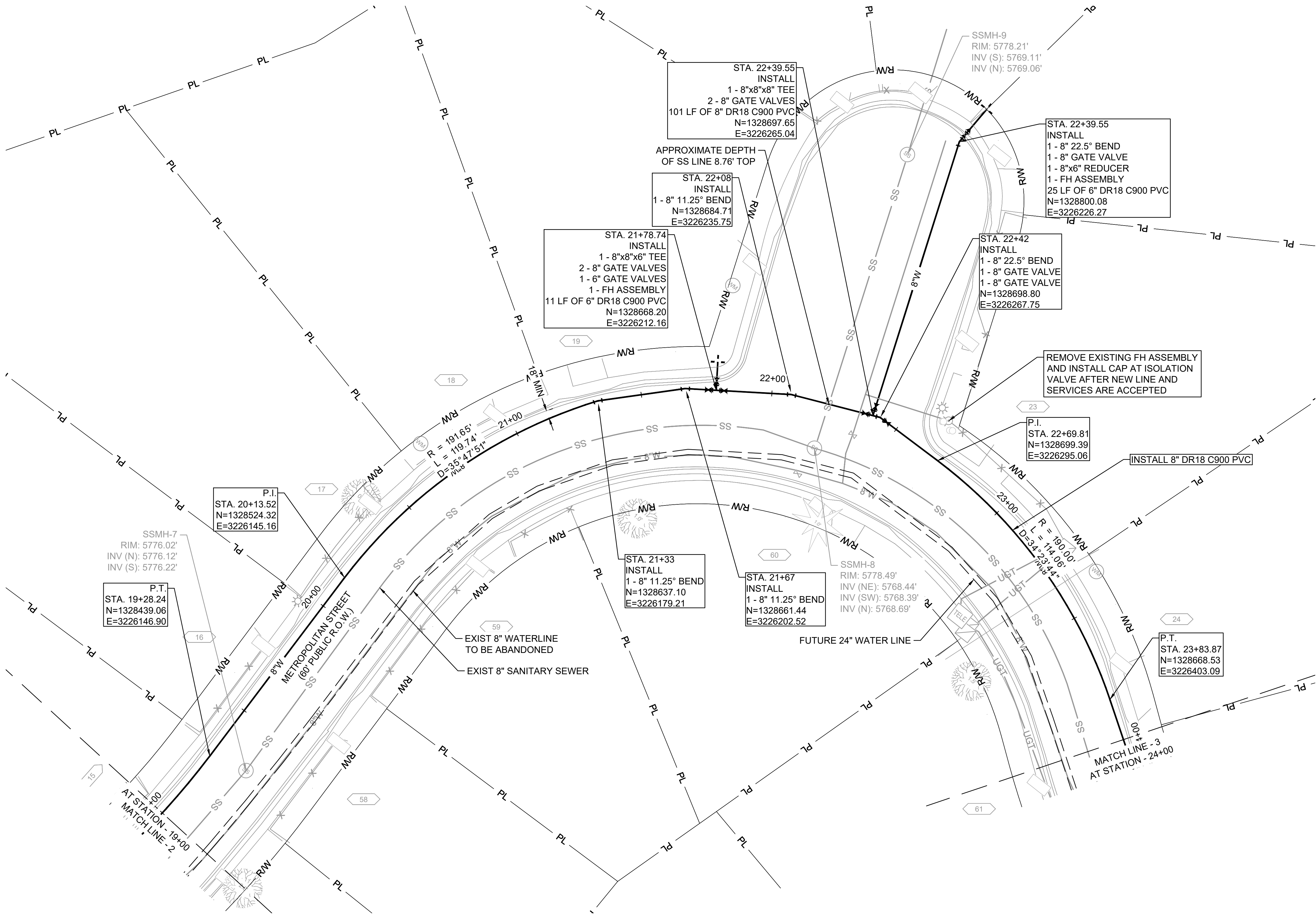
JOB NO.: 21W23110
DATE: JUNE 2022
DESIGNED BY: PMB
DRAWN BY: UOP

BAR IS ONE INCH ON ORIGINAL DRAWING
IF NOT ONE INCH ON THIS SHEET, ADJUST SCALES ACCORDINGLY.

DRAWING NUMBER
05-C301

SHEET NUMBER
05

File: L:\2021\12\12\23110 - WWSD UW2E CMARDrawings\WWSD UM CMAR 8 INCH - 05- C303.dwg Last Save: 9/29/2022 10:03 AM Last saved by: F.Chavez
Last plotted by: Chavez, Francisco J. (Paco) Plot Style: AECmono.ctb Plot Scale: 1/2"=60' Plot Date: 9/29/2022 3:30 PM Plotter used: None



GENERAL NOTES:

1. FOR WATER DISTRIBUTION LINES (10" OR LESS), LOWERING OF 2' OR LESS SHALL BE ACCOMPLISHED BY DEFLECTION IF POSSIBLE. LOWERING IN EXCESS OF 2' SHALL REQUIRE A FORMAL LOWERING THAT INCLUDES FITTINGS (SEE STANDARD DRAWING W-16) PROVIDING NOTE 8 ON STANDARD DETAIL W-16 DOES NOT APPLY.
2. "LONG" WATER SERVICE LINES NEED TO BE AT 8.5' DEPTH AT ALL CROSSING WITH FUTURE 24", UNLESS OTHERWISE NOTED.
3. CONTRACTOR TO RELOCATE ALL EXISTING WATER SERVICE LINES AND REPLACE FROM MAIN ("CORP") UP TO CURB STOP OR METER VALVE, RESTORING SERVICES, PER WWSD STANDARDS.
4. CONTRACTOR TO RESERVE ADEQUATE CLEARANCES AND UTILITIES SEPARATION FOR FUTURE 24" WATER LINE.

SERVICE CONNECTIONS:

TOTAL NUMBER OF SERVICE CONNECTIONS= 4* (LONG)

TOTAL NUMBER OF SERVICE CONNECTIONS= 9* (SHORT)

*TO BE FIELD VERIFIED



© 2022 GARVER, LLC
THIS DOCUMENT, ALONG WITH THE IDEAS AND DESIGNS CONVEYED HEREIN, SHALL BE CONSIDERED INSTRUMENTS OF PROFESSIONAL SERVICE AND ARE PROPERTY OF GARVER, LLC. ANY USE, REPRODUCTION, OR DISTRIBUTION OF THIS DOCUMENT, ALONG WITH THE IDEAS AND DESIGN CONTAINED HEREIN, IS PROHIBITED UNLESS AUTHORIZED IN WRITING BY GARVER, LLC OR EXPLICITLY ALLOWED IN THE GOVERNING PROFESSIONAL SERVICES AGREEMENT FOR THIS WORK.

THIS DOCUMENT IS RELEASED FOR THE PURPOSE OF INTERIM REVIEW UNDER THE AUTHORITY OF PAUL M. BANSCHACH, P.E. 0059890 ON JUNE 10, 2022. THIS DOCUMENT IS NOT TO BE USED FOR CONSTRUCTION, BIDDING, OR PERMITTING PURPOSES.

REV.	DATE	DESCRIPTION	BY

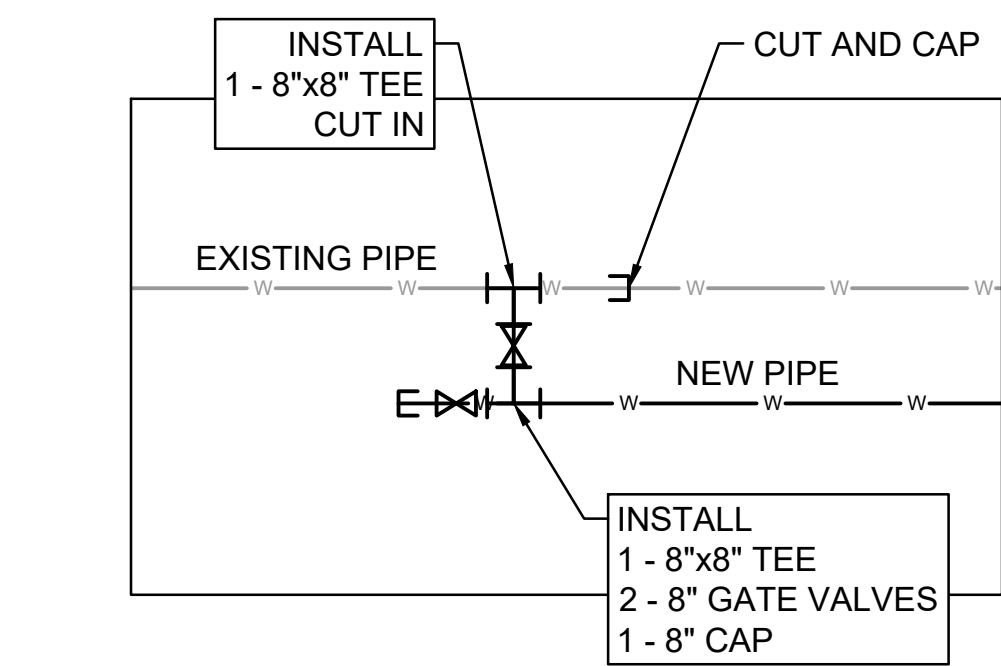
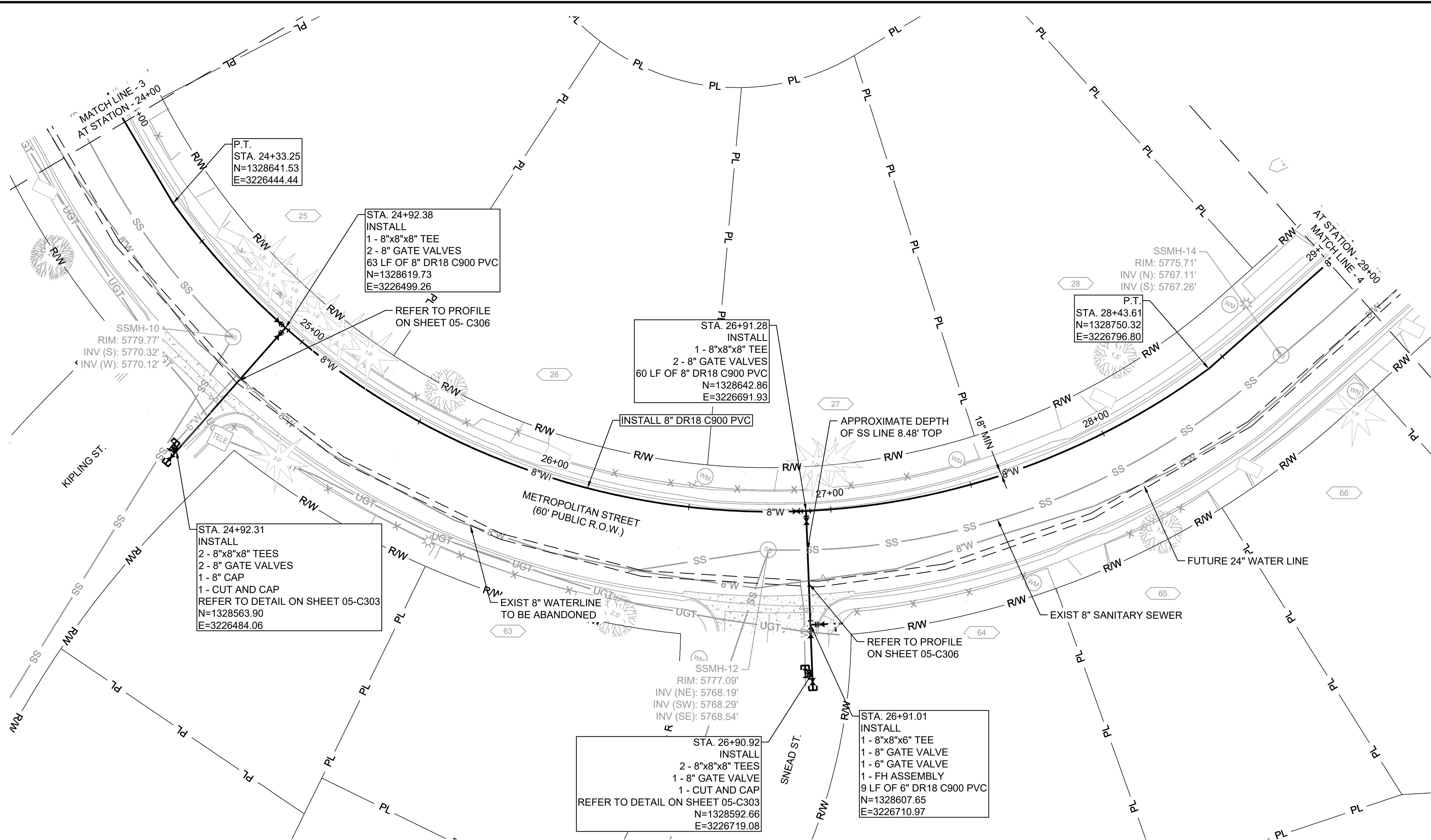
WIDEFIELD WATER AND SANITATION DISTRICT
WIDEFIELD, COLORADO
8" WATER DISTRIBUTION MAIN REPLACEMENT ON METROPOLITAN STREET

PLAN AND PROFILE
(STA. 19+00 TO STA. 24+00)

JOB NO.: 21W23110
DATE: JUNE 2022
DESIGNED BY: PMB
DRAWN BY: UOP

BAR IS ONE INCH ON ORIGINAL DRAWING
IF NOT ONE INCH ON THIS SHEET, ADJUST SCALES ACCORDINGLY.
DRAWING NUMBER
05-C302
SHEET NUMBER
06

File: L:\2021\12\12\23110 - WWSD UW2E CMARDrawings\WWSD UM CMAR 8 INCH - 05- C303.dwg Last Save: 9/29/2022 10:03 AM Last saved by: F.Chavez
Last plotted by: Chavez, Francisco J. (Paco) Plot Style: AECmonochrome.ctb Plot Date: 9/29/2022 3:31 PM Plotter used: None



1 CONNECTION TIE IN DETAIL
05-C303 SCALE: NONE

GENERAL NOTES:

1. FOR WATER DISTRIBUTION LINES (10" OR LESS), LOWERING OF 2' OR LESS SHALL BE ACCOMPLISHED BY DEFLECTION IF POSSIBLE. LOWERING IN EXCESS OF 2' SHALL REQUIRE A FORMAL LOWERING THAT INCLUDES FITTINGS (SEE STANDARD DRAWING W-16) PROVIDING NOTE 8 ON STANDARD DETAIL W-16 DOES NOT APPLY.
2. "LONG" WATER SERVICE LINES NEED TO BE AT 8.5' DEPTH AT ALL CROSSING WITH FUTURE 24", UNLESS OTHERWISE NOTED.
3. CONTRACTOR TO RELOCATE ALL EXISTING WATER SERVICE LINES AND REPLACE FROM MAIN ("CORP") UP TO CURB STOP OR METER VALVE, RESTORING SERVICES, PER WWSD STANDARDS.
4. CONTRACTOR TO RESERVE ADEQUATE CLEARANCES AND UTILITIES SEPARATION FOR FUTURE 24" WATER LINE.



© 2022 GARVER, LLC
THIS DOCUMENT, ALONG WITH THE IDEAS AND DESIGNS CONVEYED HEREIN, SHALL BE CONSIDERED INSTRUMENTS OF PROFESSIONAL SERVICE AND ARE PROPERTY OF GARVER, LLC. ANY USE, REPRODUCTION, OR DISTRIBUTION OF THIS DOCUMENT, ALONG WITH THE IDEAS AND DESIGN CONTAINED HEREIN, IS PROHIBITED UNLESS AUTHORIZED IN WRITING BY GARVER, LLC OR EXPLICITLY ALLOWED IN THE GOVERNING PROFESSIONAL SERVICES AGREEMENT FOR THIS WORK.

THIS DOCUMENT IS RELEASED FOR THE PURPOSE OF INTERIM REVIEW UNDER THE AUTHORITY OF PAUL M. BANSCHACH, P.E. 00598900 ON JUNE 10, 2022. THIS DOCUMENT IS NOT TO BE USED FOR CONSTRUCTION, BIDDING, OR PERMITTING PURPOSES.

REV.	DATE	DESCRIPTION	BY

WIDEFIELD WATER AND SANITATION DISTRICT
WIDEFIELD, COLORADO
8" WATER DISTRIBUTION MAIN REPLACEMENT ON METROPOLITAN STREET

PLAN AND PROFILE
(STA. 24+00 TO STA. 29+00)

JOB NO.: 21W23110
DATE: JUNE 2022
DESIGNED BY: PMB
DRAWN BY: UOP

BAR IS ONE INCH ON ORIGINAL DRAWING
IF NOT ONE INCH ON THIS SHEET, ADJUST SCALES ACCORDINGLY.
DRAWING NUMBER
05-C303
SHEET NUMBER
07

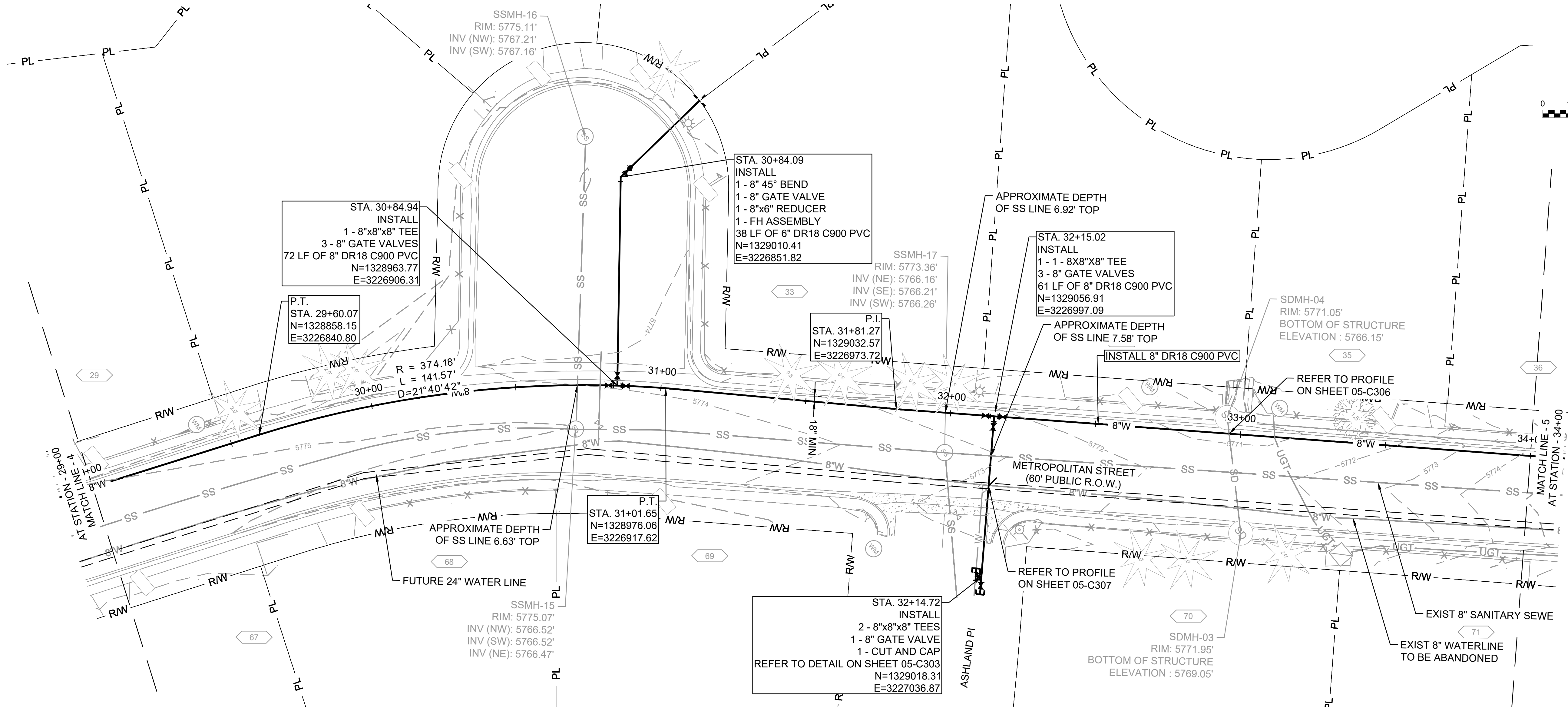
SERVICE CONNECTIONS:

TOTAL NUMBER OF SERVICE CONNECTIONS= 3* (LONG)

TOTAL NUMBER OF SERVICE CONNECTIONS= 5* (SHORT)

*TO BE FIELD VERIFIED

File: L:\2021\12\12\23110 - WWSDD UW2E CMARDrawings\WWSDD UM CMAR 8 INCH - 05 - C305.dwg Last Save: 9/29/2022 10:33 AM Last saved by: F.Chavez
Last plotted by: Chavez, Francisco J. (Paco) Plot Style: AECmonochrome.ctb Plot Scale: 1/2"=1'-0" Plot Date: 9/29/2022 3:34 PM Plotter used: None



GENERAL NOTES:

1. FOR WATER DISTRIBUTION LINES (10" OR LESS), LOWERING OF 2" OR LESS SHALL BE ACCOMPLISHED BY DEFLECTION IF POSSIBLE. LOWERING IN EXCESS OF 2" SHALL REQUIRE A FORMAL LOWERING THAT INCLUDES FITTINGS (SEE STANDARD DRAWING W-16) PROVIDING NOTE 8 ON STANDARD DETAIL W-16 DOES NOT APPLY.
2. "LONG" WATER SERVICE LINES NEED TO BE AT 8.5' DEPTH AT ALL CROSSING WITH FUTURE 24", UNLESS OTHERWISE NOTED.
3. CONTRACTOR TO RELOCATE ALL EXISTING WATER SERVICE LINES AND REPLACE FROM MAIN ("CORP") UP TO CURB STOP OR METER VALVE, RESTORING SERVICES, PER WWSDD STANDARDS.
4. CONTRACTOR TO RESERVE ADEQUATE CLEARANCES AND UTILITIES SEPARATION FOR FUTURE 24" WATER LINE.

SERVICE CONNECTIONS:

TOTAL NUMBER OF SERVICE CONNECTIONS= 2* (LONG)

TOTAL NUMBER OF SERVICE CONNECTIONS= 7* (SHORT)

*TO BE FIELD VERIFIED



© 2022 GARVER, LLC
THIS DOCUMENT, ALONG WITH THE IDEAS AND DESIGNS CONVEYED HEREIN, SHALL BE CONSIDERED INSTRUMENTS OF PROFESSIONAL SERVICE AND ARE PROPERTY OF GARVER, LLC. ANY USE, REPRODUCTION, OR DISTRIBUTION OF THIS DOCUMENT, ALONG WITH THE IDEAS AND DESIGN CONTAINED HEREIN, IS PROHIBITED UNLESS AUTHORIZED IN WRITING BY GARVER, LLC OR EXPLICITLY ALLOWED IN THE GOVERNING PROFESSIONAL SERVICES AGREEMENT FOR THIS WORK.

THIS DOCUMENT IS RELEASED FOR THE PURPOSE OF INTERIM REVIEW UNDER THE AUTHORITY OF PAUL M. BANSCHACH, P.E. 0059830 ON JUNE 10, 2022. THIS DOCUMENT IS NOT TO BE USED FOR CONSTRUCTION, BIDDING, OR PERMITTING PURPOSES.

REV.	DATE	DESCRIPTION	BY



WIDEFIELD WATER
AND SANITATION
DISTRICT
WIDEFIELD, COLORADO

8" WATER DISTRIBUTION MAIN
REPLACEMENT ON
METROPOLITAN STREET

PLAN AND PROFILE
(STA. 29+00 TO STA.
34+00)

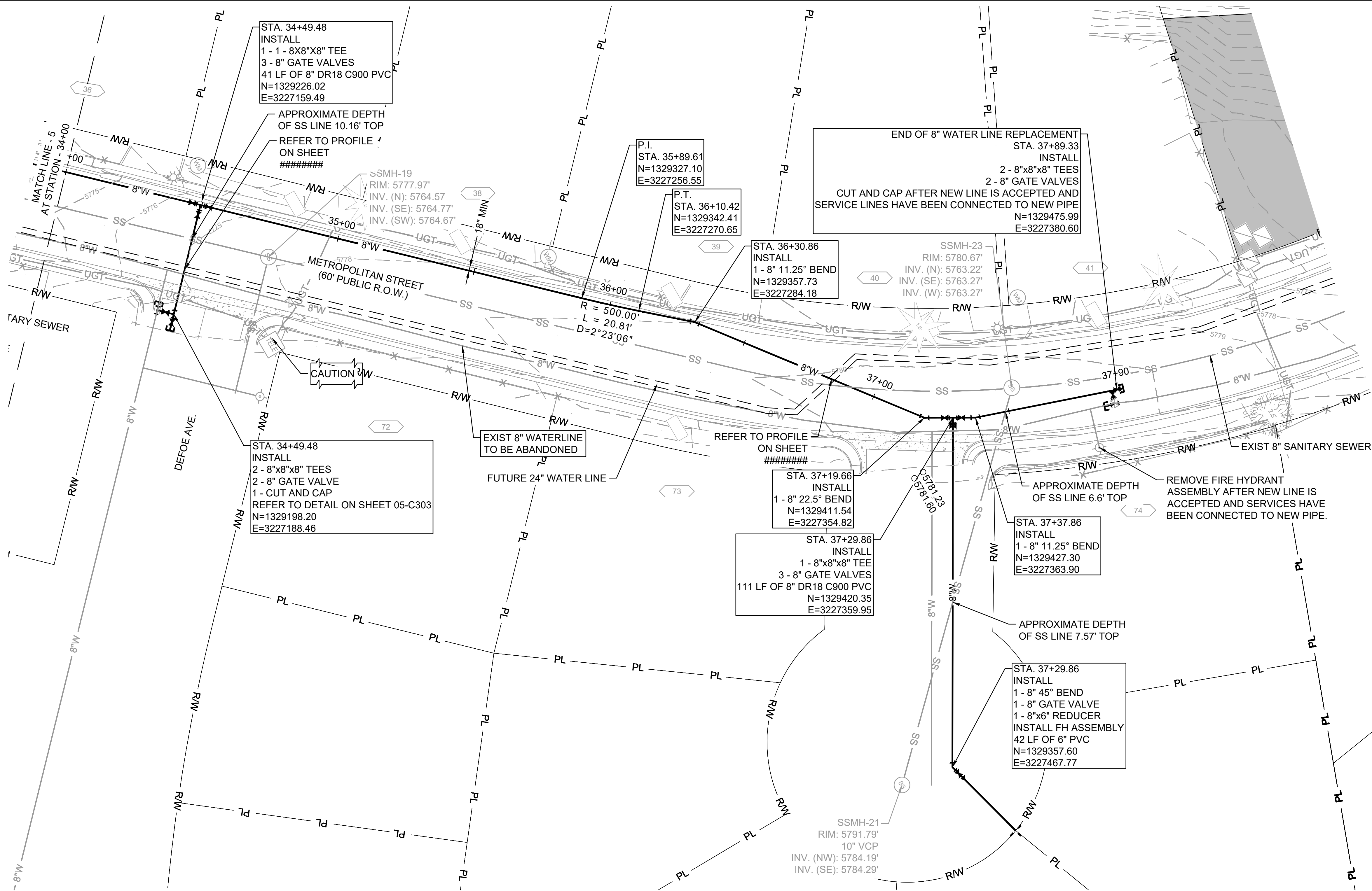
JOB NO.: 21W23110
DATE: JUNE 2022
DESIGNED BY: PMB
DRAWN BY: UOP

BAR IS ONE INCH ON
ORIGINAL DRAWING
IF NOT ONE INCH ON THIS SHEET,
ADJUST SCALES ACCORDINGLY.

DRAWING NUMBER

05-C304

SHEET
NUMBER **08**



GENERAL NOTES:

1. FOR WATER DISTRIBUTION LINES (10" OR LESS), LOWERING OF 2' OR LESS SHALL BE ACCOMPLISHED BY DEFLECTION IF POSSIBLE. LOWERING IN EXCESS OF 2' SHALL REQUIRE A FORMAL LOWERING THAT INCLUDES FITTINGS (SEE STANDARD DRAWING W-16) PROVIDING NOTE 8 ON STANDARD DETAIL W-16 DOES NOT APPLY.
2. "LONG" WATER SERVICE LINES NEED TO BE AT 8.5' DEPTH AT ALL CROSSING WITH FUTURE 24", UNLESS OTHERWISE NOTED.
3. CONTRACTOR TO RELOCATE ALL EXISTING WATER SERVICE LINES AND REPLACE FROM MAIN ("CORP") UP TO CURB STOP OR METER VALVE, RESTORING SERVICES, PER WWSD STANDARDS.
4. CONTRACTOR TO RESERVE ADEQUATE CLEARANCES AND UTILITIES SEPARATION FOR FUTURE 24" WATER LINE.

SERVICE CONNECTIONS:

TOTAL NUMBER OF SERVICE CONNECTIONS= 6* (LONG)

TOTAL NUMBER OF SERVICE CONNECTIONS= 6* (SHORT)

*TO BE FIELD VERIFIED



© 2022 GARVER, LLC
THIS DOCUMENT, ALONG WITH THE IDEAS AND DESIGNS CONVEYED HEREIN, SHALL BE CONSIDERED INSTRUMENTS OF PROFESSIONAL SERVICE AND ARE PROPERTY OF GARVER, LLC. ANY USE, REPRODUCTION, OR DISTRIBUTION OF THIS DOCUMENT, ALONG WITH THE IDEAS AND DESIGNS CONTAINED HEREIN, IS PROHIBITED UNLESS AUTHORIZED IN WRITING BY GARVER, LLC OR EXPLICITLY ALLOWED IN THE GOVERNING PROFESSIONAL SERVICES AGREEMENT FOR THIS WORK.

NOT FOR CONSTRUCTION

THIS DOCUMENT IS RELEASED FOR THE PURPOSE OF INTERIM REVIEW UNDER THE AUTHORITY OF PAUL M. BANSCHACH, P.E. 0059890, ON JUNE 10, 2022. THIS DOCUMENT IS NOT TO BE USED FOR CONSTRUCTION, BIDDING, OR PERMITTING PURPOSES.

REV.	DATE	DESCRIPTION	BY

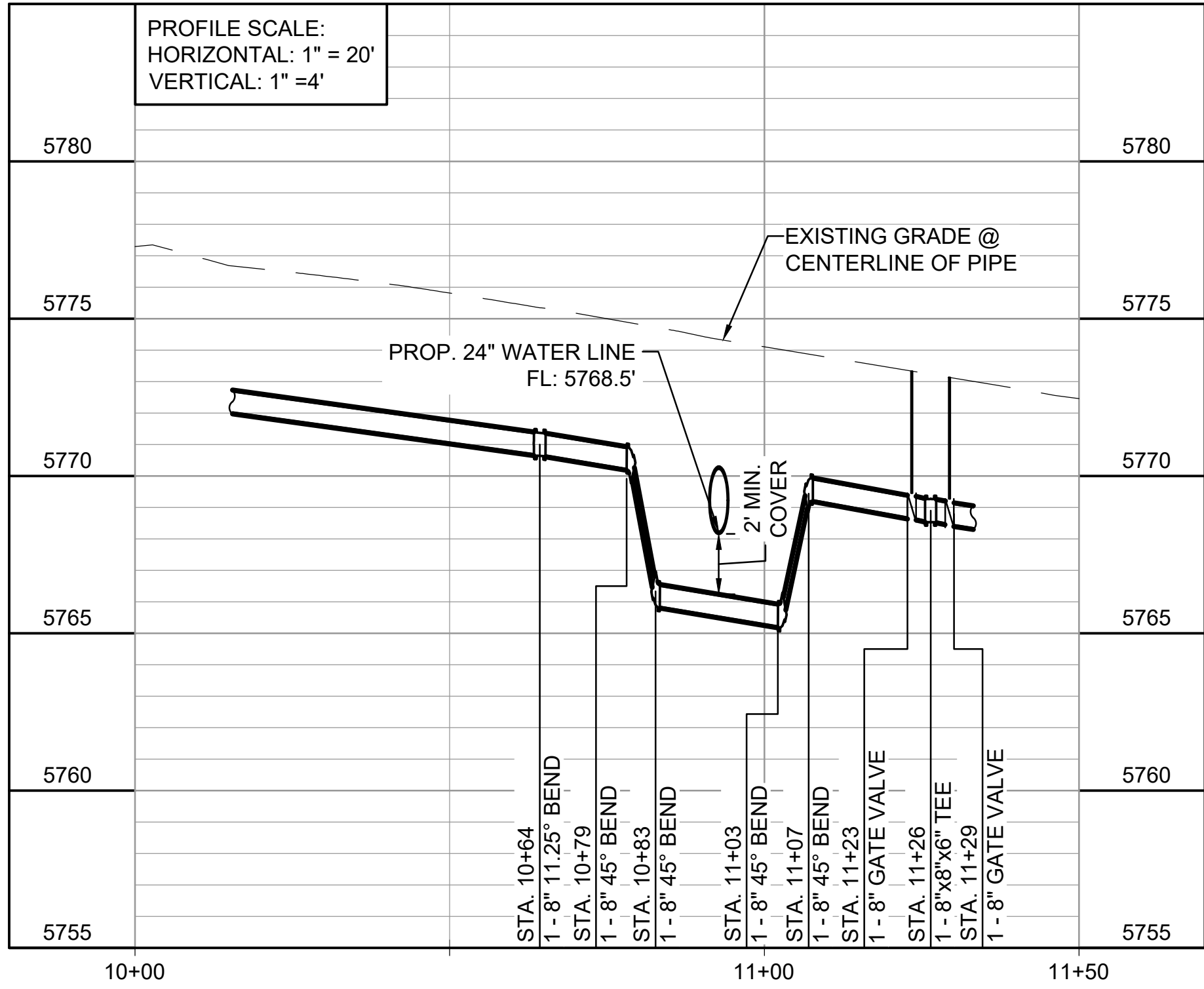
WIDEFIELD WATER AND SANITATION DISTRICT
WIDEFIELD, COLORADO
8" WATER DISTRIBUTION MAIN REPLACEMENT ON METROPOLITAN STREET

PLAN AND PROFILE
(STA. 34+00 TO STA. 37+90)

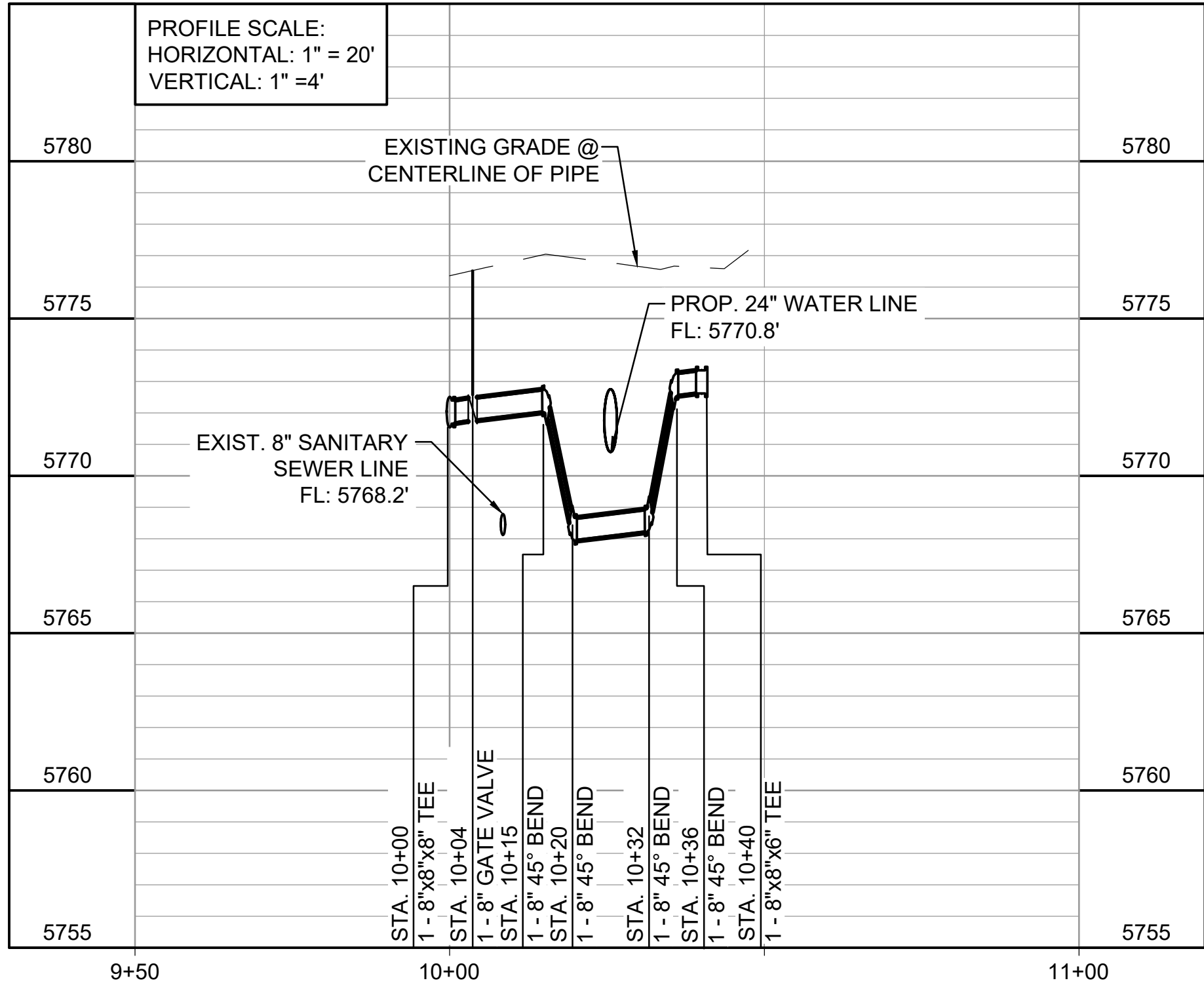
JOB NO.: 21W23110
DATE: JUNE 2022
DESIGNED BY: PMB
DRAWN BY: UOP

BAR IS ONE INCH ON ORIGINAL DRAWING
IF NOT ONE INCH ON THIS SHEET, ADJUST SCALES ACCORDINGLY.
DRAWING NUMBER
05-C305
SHEET NUMBER
09

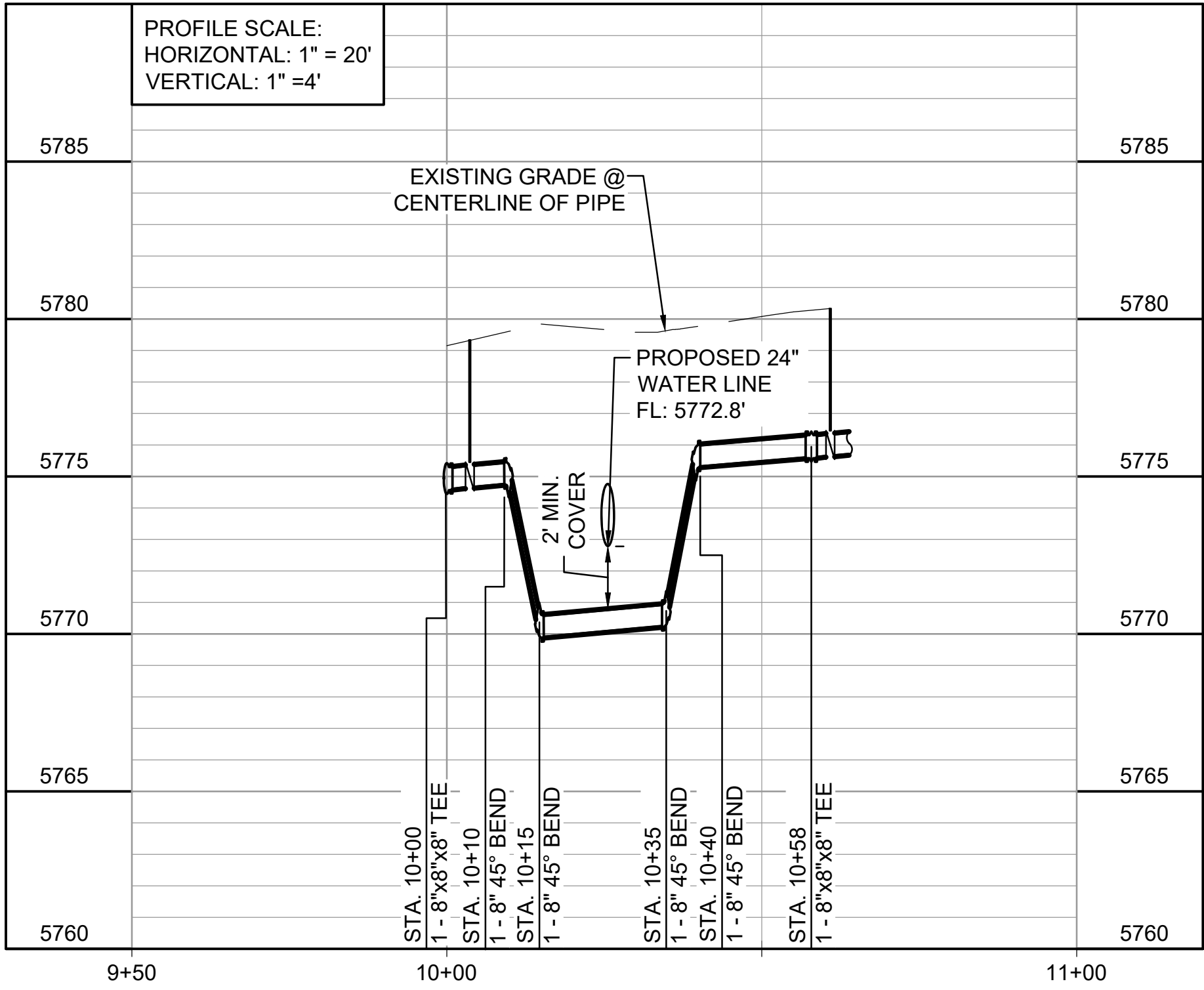
File: L:\2021\12\12\2110 - WWSDD UW2E CMARDrawings\WWSDD UM CMAR - 05- C309 (6in PROF) .dwg Last Save: 9/29/2022 2:58 PM Last saved by: F.Chavez
Last plotted by: Chavez, Francisco J. (Paco) Plot Style: AECmono.ctb Plot Scale: 1/2"=4' Plot Date: 9/29/2022 3:38 PM Plotter used: None



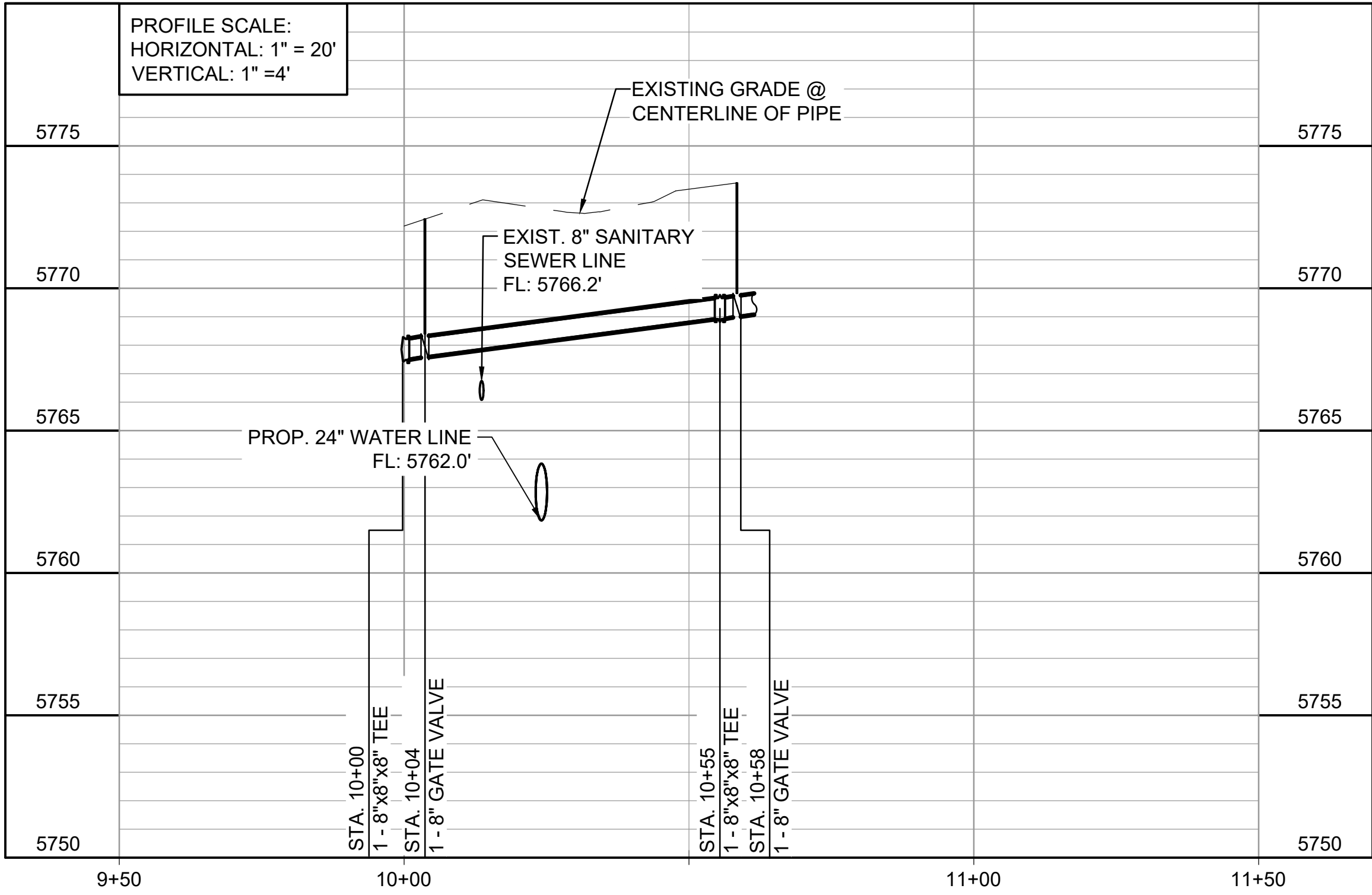
1
05-C301
WATER LINE LATERAL STA. 10+00 TO STA. 11+50
SCALE: 1" = 20'



3
05-C302
WATER LINE LATERAL STA. 9+50 TO STA. 11+00
SCALE: 1" = 20'



2
05-C301
WATER LINE LATERAL STA. 9+50 TO STA. 11+00
SCALE: 1" = 20'



4
05-C303
WATER LINE LATERAL STA. 9+50 TO STA. 11+50
SCALE: 1" = 20'



© 2022 GARVER, LLC
THIS DOCUMENT, ALONG WITH THE
IDEAS AND DESIGNS CONVEYED
HEREIN, SHALL BE CONSIDERED
INSTRUMENTS OF PROFESSIONAL
SERVICE AND ARE PROPERTY OF
GARVER, LLC. ANY USE,
REPRODUCTION, OR DISTRIBUTION
OF THIS DOCUMENT, ALONG WITH
THE IDEAS AND DESIGN CONTAINED
HEREIN, IS PROHIBITED UNLESS
AUTHORIZED IN WRITING BY
GARVER, LLC OR EXPLICITLY
ALLOWED IN THE GOVERNING
PROFESSIONAL SERVICES
AGREEMENT FOR THIS WORK.

NOT FOR CONSTRUCTION

THIS DOCUMENT IS RELEASED FOR THE
PURPOSE OF INTERIM REVIEW UNDER THE
AUTHORITY OF PAUL M. BANSCHACH,
P.E. 0059830 ON JUNE 10, 2022. THIS DOCUMENT
IS NOT TO BE USED FOR CONSTRUCTION,
BIDDING, OR PERMITTING PURPOSES.

REV.	DATE	DESCRIPTION	BY

WIDEFIELD WATER
AND SANITATION
DISTRICT
WIDEFIELD, COLORADO
8" WATER DISTRIBUTION MAIN
REPLACEMENT ON
METROPOLITAN STREET

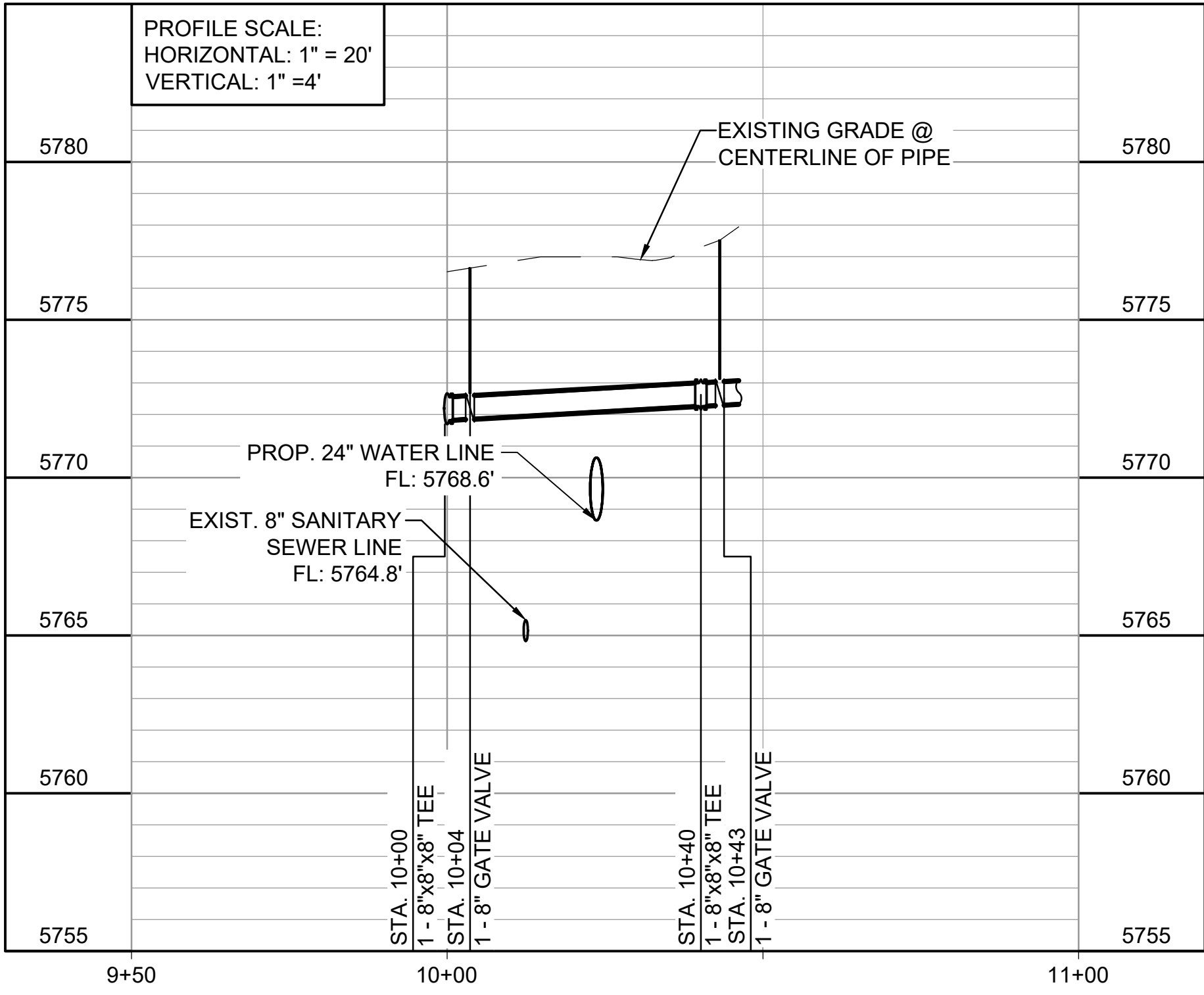
WATERLINE
LATERALS 1

JOB NO.: 21W23110
DATE: JUNE 2022
DESIGNED BY: PMB
DRAWN BY: UOP

BAR IS ONE INCH ON
ORIGINAL DRAWING
0 1"
IF NOT ONE INCH ON THIS SHEET,
ADJUST SCALES ACCORDINGLY.

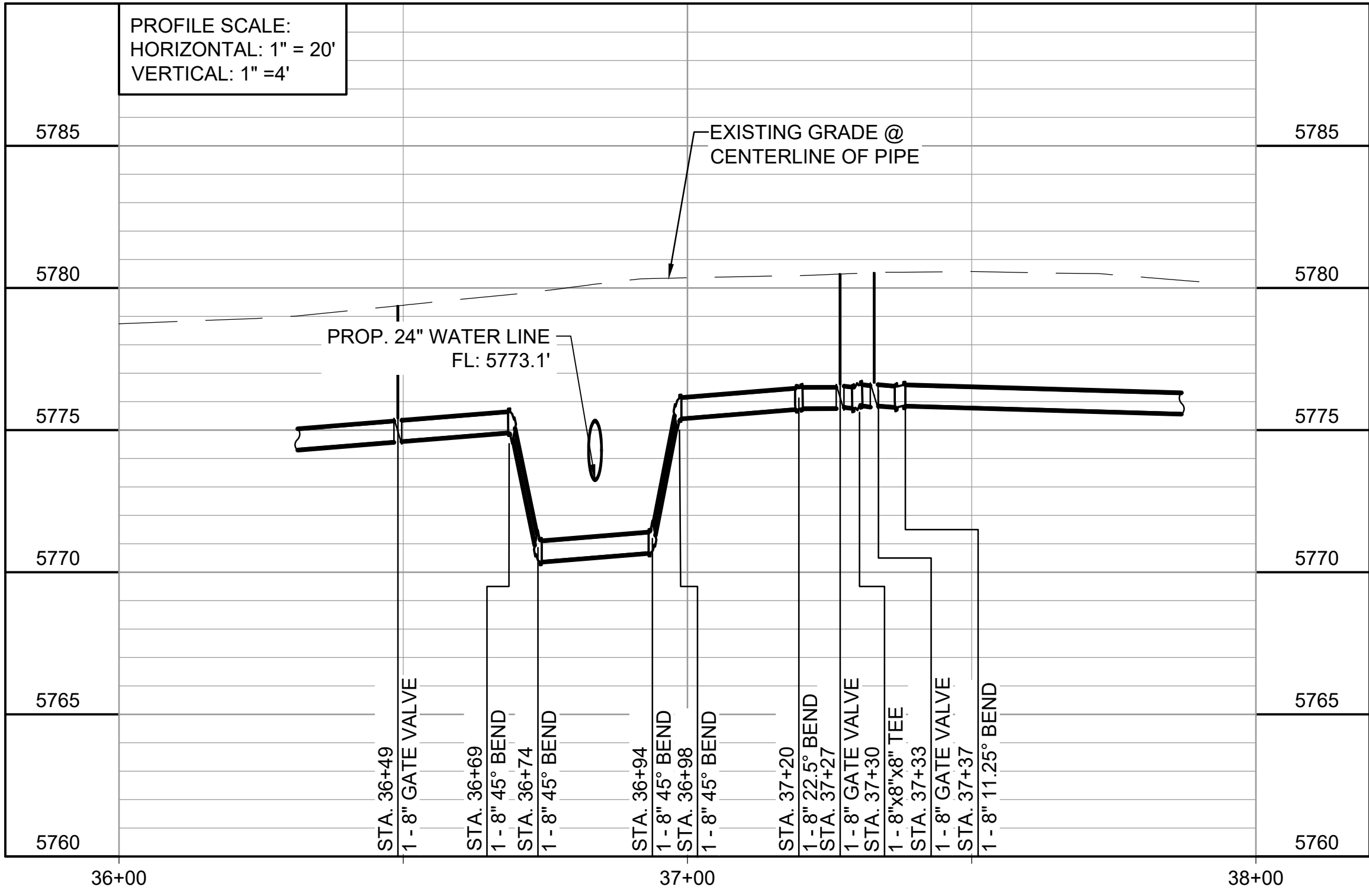
DRAWING NUMBER
05- C306
SHEET
NUMBER **10**

File: L:\2021\21W23110 - WWSD UW2E CMAR\Drawings\WWSD UM CMAR - 05- C305 (8in PROF).dwg Last Save: 9/29/2022 2:58 PM Last saved by: F.Chavez
Last plotted by: Chavez, Francisco J. (Paco) Plot Style: AECmono.ctb Plot Scale: 1/2"=40' Plot Date: 9/29/2022 3:39 PM Plotter used: None




1
05-C305

WATER LINE LATERALS
SCALE: 1" = 20'



2
05-C305

WATER LINE LATERALS
SCALE: 1" = 20'




© 2022 GARVER, LLC
THIS DOCUMENT, ALONG WITH THE
IDEAS AND DESIGNS CONVEYED
HEREIN, SHALL BE CONSIDERED
INSTRUMENTS OF PROFESSIONAL
SERVICE AND ARE PROPERTY OF
GARVER, LLC. ANY USE,
REPRODUCTION, OR DISTRIBUTION
OF THIS DOCUMENT, ALONG WITH
THE IDEAS AND DESIGN CONTAINED
HEREIN, IS PROHIBITED UNLESS
AUTHORIZED IN WRITING BY
GARVER, LLC OR EXPLICITLY
ALLOWED IN THE GOVERNING
PROFESSIONAL SERVICES
AGREEMENT FOR THIS WORK.

NOT FOR CONSTRUCTION

THIS DOCUMENT IS RELEASED FOR THE
PURPOSE OF INTERIM REVIEW UNDER THE
AUTHORITY OF PAUL M. BANSCHBACH,
P.E. 00598900 ON JUNE 10, 2022. THIS DOCUMENT
IS NOT TO BE USED FOR CONSTRUCTION,
BIDDING, OR PERMITTING PURPOSES.

REV.	DATE	DESCRIPTION	BY



WIDEFIELD WATER
AND SANITATION
DISTRICT
WIDEFIELD, COLORADO

8" WATER DISTRIBUTION MAIN
REPLACEMENT ON
METROPOLITAN STREET

WATERLINE
LATERALS 2

JOB NO.: 21W23110
DATE: JUNE 2022
DESIGNED BY: PMB
DRAWN BY: UOP

BAR IS ONE INCH ON
ORIGINAL DRAWING
0 1"
IF NOT ONE INCH ON THIS SHEET,
ADJUST SCALES ACCORDINGLY.

DRAWING NUMBER
05- C307

SHEET
NUMBER **11**