

SCHMIDT PHASE 1 - DISTRICT INFRASTRUCTURE

EL PASO COUNTY, CO

GRADING AND EROSION CONTROL PLANS

GRADING AND EROSION CONTROL STANDARD NOTES

- STORMWATER DISCHARGES FROM CONSTRUCTION SITES SHALL NOT CAUSE OR THREATEN TO CAUSE POLLUTION, CONTAMINATION, OR DEGRADATION OF STATE WATERS. ALL WORK AND EARTH DISTURBANCE SHALL BE DONE IN A MANNER THAT MINIMIZES POLLUTION OF ANY ON-SITE OR OFF-SITE WATERS, INCLUDING WETLANDS.
- NOTWITHSTANDING ANYTHING DEPICTED IN THESE PLANS IN WORDS OR GRAPHIC REPRESENTATION, ALL DESIGN AND CONSTRUCTION RELATED TO ROADS, STORM DRAINAGE AND EROSION CONTROL SHALL CONFORM TO THE STANDARDS AND REQUIREMENTS OF THE MOST RECENT VERSION OF THE RELEVANT ADOPTED EL PASO COUNTY STANDARDS, INCLUDING THE LAND DEVELOPMENT CODE, THE ENGINEERING CRITERIA MANUAL, THE DRAINAGE CRITERIA MANUAL, AND THE EROSION CRITERIA MANUAL VOLUME 2. ANY DEVIATIONS FROM REGULATIONS AND STANDARDS MUST BE REQUESTED, AND APPROVED, IN WRITING.
- A SEPARATE STORMWATER MANAGEMENT PLAN (SWMP) FOR THIS PROJECT SHALL BE COMPLETED AND AN EROSION AND STORMWATER QUALITY CONTROL PERMIT (ESQCP) ISSUED PRIOR TO COMMENCING CONSTRUCTION. MANAGEMENT OF THE SWMP DURING CONSTRUCTION IS THE RESPONSIBILITY OF THE DESIGNATED QUALIFIED STORMWATER MANAGER OR CERTIFIED EROSION CONTROL INSPECTOR. THE SWMP SHALL BE LOCATED ON SITE AT ALL TIMES DURING CONSTRUCTION AND SHALL BE KEPT UP TO DATE WITH WORK PROGRESS AND CHANGES IN THE FIELD.
- ONCE THE ESQCP IS APPROVED AND A "NOTICE TO PROCEED" HAS BEEN ISSUED, THE CONTRACTOR MAY INSTALL THE INITIAL STAGE EROSION AND SEDIMENT CONTROL MEASURES AS INDICATED ON THE APPROVED GEC. A PRE-CONSTRUCTION MEETING BETWEEN THE CONTRACTOR, ENGINEER, AND EL PASO COUNTY WILL BE HELD PRIOR TO ANY CONSTRUCTION. IT IS THE RESPONSIBILITY OF THE APPLICANT TO COORDINATE THE MEETING TIME AND PLACE WITH COUNTY STAFF.
- CONTROL MEASURES MUST BE INSTALLED PRIOR TO COMMENCEMENT OF ACTIVITIES THAT COULD CONTRIBUTE POLLUTANTS TO STORMWATER. CONTROL MEASURES FOR ALL SLOPES, CHANNELS, DITCHES, AND DISTURBED LAND AREAS SHALL BE INSTALLED IMMEDIATELY UPON COMPLETION OF THE DISTURBANCE.
- ALL TEMPORARY SEDIMENT AND EROSION CONTROL MEASURES SHALL BE MAINTAINED AND REMAIN IN EFFECTIVE OPERATING CONDITION UNTIL PERMANENT SOIL EROSION CONTROL MEASURES ARE IMPLEMENTED AND FINAL STABILIZATION IS ESTABLISHED. ALL PERSONS ENGAGED IN LAND DISTURBANCE ACTIVITIES SHALL ASSESS THE ADEQUACY OF CONTROL MEASURES AT THE SITE AND IDENTIFY IF CHANGES TO THOSE CONTROL MEASURES ARE NEEDED TO ENSURE THE CONTINUED EFFECTIVE PERFORMANCE OF THE CONTROL MEASURES. ALL CHANGES TO TEMPORARY SEDIMENT AND EROSION CONTROL MEASURES MUST BE INCORPORATED INTO THE STORMWATER MANAGEMENT PLAN.
- TEMPORARY STABILIZATION SHALL BE IMPLEMENTED ON DISTURBED AREAS AND STOCKPILES WHERE GROUND DISTURBING CONSTRUCTION ACTIVITY HAS PERMANENTLY CEASED OR TEMPORARILY CEASED FOR LONGER THAN 14 DAYS.
- FINAL STABILIZATION MUST BE IMPLEMENTED AT ALL APPLICABLE CONSTRUCTION SITES. FINAL STABILIZATION IS ACHIEVED WHEN ALL GROUND DISTURBING ACTIVITIES ARE COMPLETE AND ALL DISTURBED AREAS EITHER HAVE A UNIFORM VEGETATIVE COVER WITH INDIVIDUAL PLANT DENSITY OF 70 PERCENT OF PRE-DISTURBANCE LEVELS ESTABLISHED OR EQUIVALENT PERMANENT ALTERNATIVE STABILIZATION METHOD IS IMPLEMENTED. ALL TEMPORARY SEDIMENT AND EROSION CONTROL MEASURES SHALL BE REMOVED UPON FINAL STABILIZATION AND BEFORE PERMIT CLOSURE.
- ALL PERMANENT STORMWATER MANAGEMENT FACILITIES SHALL BE INSTALLED AS DESIGNED IN THE APPROVED PLANS. ANY PROPOSED CHANGES THAT AFFECT THE DESIGN OR FUNCTION OF PERMANENT STORMWATER MANAGEMENT STRUCTURES MUST BE APPROVED BY THE ECM ADMINISTRATOR PRIOR TO IMPLEMENTATION.
- EARTH DISTURBANCES SHALL BE CONDUCTED IN SUCH A MANNER SO AS TO EFFECTIVELY MINIMIZE ACCELERATED SOIL EROSION AND RESULTING SEDIMENTATION. ALL DISTURBANCES SHALL BE DESIGNED, CONSTRUCTED, AND COMPLETED SO THAT THE EXPOSED AREA OF ANY DISTURBED LAND SHALL BE LIMITED TO THE SHORTEST PRACTICAL PERIOD OF TIME. PRE-EXISTING VEGETATION SHALL BE PROTECTED AND MAINTAINED WITHIN 50 HORIZONTAL FEET OF A WATERS OF THE STATE UNLESS SHOWN TO BE INFEASIBLE AND SPECIFICALLY REQUESTED AND APPROVED.
- COMPACTION OF SOIL MUST BE PREVENTED IN AREAS DESIGNATED FOR INFILTRATION CONTROL MEASURES OR WHERE FINAL STABILIZATION WILL BE ACHIEVED BY VEGETATIVE COVER. AREAS DESIGNATED FOR INFILTRATION CONTROL MEASURES SHALL ALSO BE PROTECTED FROM SEDIMENTATION DURING CONSTRUCTION UNTIL FINAL STABILIZATION IS ACHIEVED. IF COMPACTION PREVENTION IS NOT FEASIBLE DUE TO SITE CONSTRAINTS, ALL AREAS DESIGNATED FOR INFILTRATION AND VEGETATION CONTROL MEASURES MUST BE LOOSENEED PRIOR TO INSTALLATION OF THE CONTROL MEASURE(S).
- ANY TEMPORARY OR PERMANENT FACILITY DESIGNED AND CONSTRUCTED FOR THE CONVEYANCE OF STORMWATER AROUND, THROUGH, OR FROM THE EARTH DISTURBANCE AREA SHALL BE A STABILIZED CONVEYANCE DESIGNED TO MINIMIZE EROSION AND THE DISCHARGE OF SEDIMENT OFF SITE.
- CONCRETE WASH WATER SHALL BE CONTAINED AND DISPOSED OF IN ACCORDANCE WITH THE SWMP. NO WASH WATER SHALL BE DISCHARGED TO OR ALLOWED TO ENTER STATE WATERS, INCLUDING ANY SURFACE OR SUBSURFACE STORM DRAINAGE SYSTEM OR FACILITIES. CONCRETE WASHOUTS SHALL NOT BE LOCATED IN AN AREA WHERE SHALLOW GROUNDWATER MAY BE PRESENT, OR WITHIN 50 FEET OF A SURFACE WATER BODY, CREEK OR STREAM.
- DURING DEWATERING OPERATIONS OF UNCONTAMINATED GROUND WATER MAY BE DISCHARGED ON SITE, BUT SHALL NOT LEAVE THE SITE IN THE FORM OF SURFACE RUNOFF UNLESS AN APPROVED STATE DEWATERING PERMIT IS IN PLACE.
- EROSION CONTROL BLANKETING OR OTHER PROTECTIVE COVERING SHALL BE USED ON SLOPES STEEPER THAN 3:1.
- CONTRACTOR SHALL BE RESPONSIBLE FOR THE REMOVAL OF ALL WASTES FROM THE CONSTRUCTION SITE FOR DISPOSAL IN ACCORDANCE WITH LOCAL AND STATE REGULATORY REQUIREMENTS. NO CONSTRUCTION DEBRIS, TREE SLASH, BUILDING MATERIAL WASTES OR UNUSED BUILDING MATERIALS SHALL BE BURIED, DUMPED, OR DISCHARGED AT THE SITE.
- WASTE MATERIALS SHALL NOT BE TEMPORARILY PLACED OR STORED IN THE STREET, ALLEY, OR OTHER PUBLIC WAY, UNLESS IN ACCORDANCE WITH AN APPROVED TRAFFIC CONTROL PLAN. CONTROL MEASURES MAY BE REQUIRED BY EL PASO COUNTY ENGINEERING IF DEEMED NECESSARY, BASED ON SPECIFIC CONDITIONS AND CIRCUMSTANCES.
- TRACKING OF SOILS AND CONSTRUCTION DEBRIS OFF-SITE SHALL BE MINIMIZED. MATERIALS TRACKED OFF-SITE SHALL BE CLEANED UP AND PROPERLY DISPOSED OF IMMEDIATELY.
- THE OWNER/DEVELOPER SHALL BE RESPONSIBLE FOR THE REMOVAL OF ALL CONSTRUCTION DEBRIS, DIRT, TRASH, ROCK, SEDIMENT, SOIL, AND SAND THAT MAY ACCUMULATE IN ROADS, STORM DRAINS AND OTHER DRAINAGE CONVEYANCE SYSTEMS AND STORMWATER APPURTENANCES AS A RESULT OF SITE DEVELOPMENT.
- THE QUANTITY OF MATERIALS STORED ON THE PROJECT SITE SHALL BE LIMITED, AS MUCH AS PRACTICAL, TO THAT QUANTITY REQUIRED TO PERFORM THE WORK IN AN ORDERLY SEQUENCE. ALL MATERIALS STORED ON-SITE SHALL BE STORED IN A NEAT, ORDERLY MANNER, IN THEIR ORIGINAL CONTAINERS, WITH ORIGINAL MANUFACTURER'S LABELS.
- NO CHEMICAL(S) HAVING THE POTENTIAL TO BE RELEASED IN STORMWATER ARE TO BE STORED OR USED ONSITE UNLESS PERMISSION FOR THE USE OF SUCH CHEMICAL(S) IS GRANTED IN WRITING BY THE ECM ADMINISTRATOR. IN GRANTING APPROVAL FOR THE USE OF SUCH CHEMICAL(S), SPECIAL CONDITIONS AND MONITORING MAY BE REQUIRED.
- BULK STORAGE OF ALLOWED PETROLEUM PRODUCTS OR OTHER ALLOWED LIQUID CHEMICALS IN EXCESS OF 55 GALLONS SHALL REQUIRE ADEQUATE SECONDARY CONTAINMENT PROTECTION TO CONTAIN ALL SPILLS ONSITE AND TO PREVENT ANY SPILLED MATERIALS FROM ENTERING STATE WATERS, ANY SURFACE OR SUBSURFACE STORM DRAINAGE SYSTEM OR OTHER FACILITIES.
- NO PERSON SHALL CAUSE THE IMPEDIMENT OF STORMWATER FLOW IN THE CURB AND GUTTER OR DITCH EXCEPT WITH APPROVED SEDIMENT CONTROL MEASURES.
- OWNER/DEVELOPER AND THEIR AGENTS SHALL COMPLY WITH THE "COLORADO WATER QUALITY CONTROL ACT" (TITLE 25, ARTICLE 8, CRS), AND THE "CLEAN WATER ACT" (33 USC 1344), IN ADDITION TO THE REQUIREMENTS OF THE LAND DEVELOPMENT CODE, DCM VOLUME II AND THE ECM APPENDIX I. ALL APPROPRIATE PERMITS MUST BE OBTAINED BY THE CONTRACTOR PRIOR TO CONSTRUCTION (1041, NPDES, FLOODPLAIN, 404, FUGITIVE DUST, ETC.). IN THE EVENT OF CONFLICTS BETWEEN THESE REQUIREMENTS AND OTHER LAWS, RULES, OR REGULATIONS OF OTHER FEDERAL, STATE, LOCAL, OR COUNTY AGENCIES, THE MOST RESTRICTIVE LAWS, RULES, OR REGULATIONS SHALL APPLY.
- ALL CONSTRUCTION TRAFFIC MUST ENTER/EXIT THE SITE ONLY AT APPROVED CONSTRUCTION ACCESS POINTS.
- PRIOR TO CONSTRUCTION THE PERMITTEE SHALL VERIFY THE LOCATION OF EXISTING UTILITIES.
- A WATER SOURCE SHALL BE AVAILABLE ON SITE DURING EARTHWORK OPERATIONS AND SHALL BE UTILIZED AS REQUIRED TO MINIMIZE DUST FROM EARTHWORK EQUIPMENT AND WIND.
- THE SOILS REPORT FOR THIS SITE HAS BEEN PREPARED BY ENTECH ENGINEERING INC. ON MAY 25, 2022 AND SHALL BE CONSIDERED A PART OF THESE PLANS.
- AT LEAST TEN (10) DAYS PRIOR TO THE ANTICIPATED START OF CONSTRUCTION, FOR PROJECTS THAT WILL DISTURB ONE (1) ACRE OR MORE, THE OWNER OR OPERATOR OF CONSTRUCTION ACTIVITY SHALL SUBMIT A PERMIT APPLICATION FOR STORMWATER DISCHARGE TO THE COLORADO DEPARTMENT OF PUBLIC HEALTH AND ENVIRONMENT, WATER QUALITY DIVISION. THE APPLICATION CONTAINS CERTIFICATION OF COMPLETION OF A STORMWATER MANAGEMENT PLAN (SWMP), OF WHICH THIS GRADING AND EROSION CONTROL PLAN MAY BE A PART. FOR INFORMATION OR APPLICATION MATERIALS CONTACT:

COLORADO DEPARTMENT OF PUBLIC HEALTH AND ENVIRONMENT
WATER QUALITY CONTROL DIVISION
WOOD - PERMITS
4300 CHERRY CREEK DRIVE SOUTH
DENVER, CO 80246-1530
ATTN: PERMITS UNIT



Know what's below.
Call before you dig.

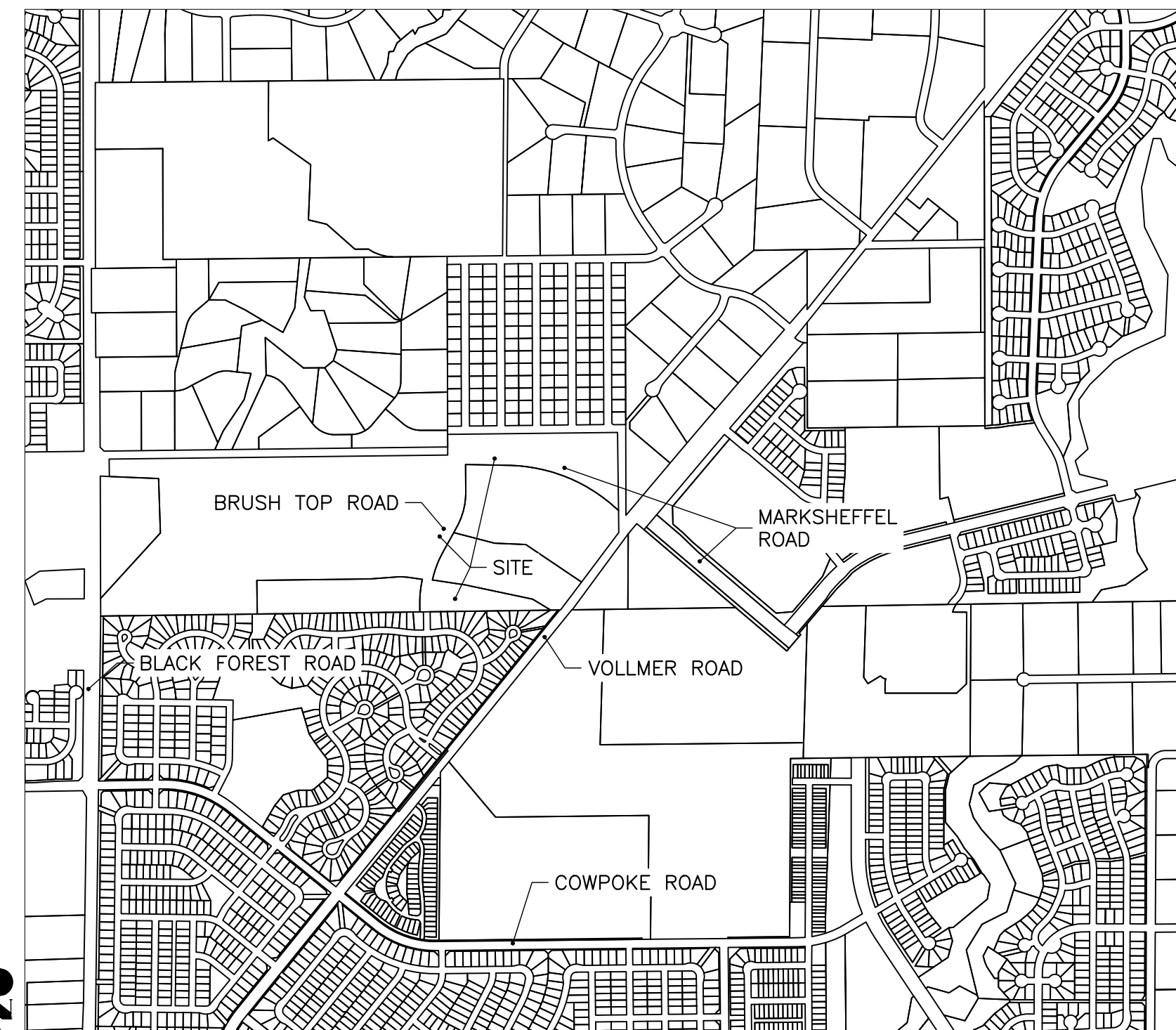
Update, should match the soils report prepared for the site.

ATE: Soils report will not be prepared in time for this submittal. Note will be updated once soils report received.

DISTRICT APPROVALS

THESE DOCUMENTS HAVE BEEN REVIEWED AND APPROVED FOR STORM DRAIN AND ASSOCIATED UTILITY SERVICE CONSTRUCTION.

FOR AND ON BEHALF OF THE STERLING RANCH METRO DISTRICT DATE



VICINITY MAP
SCALE: 1"=1000'

AGENCIES

OWNER/DEVELOPER:	TURKEY CANON QUARRY, LLC 20 BOULDER CRESCENT, SUITE 201 COLORADO SPRINGS, CO 80903 JAMES F. MORLEY (719) 471-1742	WATER RESOURCES:	STERLING RANCH METRO DISTRICT ENGINEERS JDS-HYDRO CONSULTANTS 545 E. PIKES PEAK AVE., SUITE 300 COLORADO SPRINGS, CO 80903 JOHN MCGINN (719) 668-8769
CIVIL ENGINEER:	ALL TERRAIN ENGINEERING LLC 1004 WEST VAN BUREN STREET COLORADO SPRINGS, CO 80907 RYAN BURNS P.E.	FIRE DISTRICT:	BLACK FOREST FIRE PROTECTION DISTRICT 11445 TEACHOUT ROAD COLORADO SPRINGS, CO 80908 CHIEF BRYAN JACK (719) 495-4300
COUNTY ENGINEERING:	EL PASO COUNTY PLANNING AND COMMUNITY DEVELOPMENT 2880 INTERNATIONAL CIRCLE, SUITE 110 COLORADO SPRINGS, CO 80910 JEFF RICE, P.E. (719) 520-6300	GAS DEPARTMENT:	COLORADO SPRINGS UTILITIES 7710 DURANT DR. COLORADO SPRINGS, CO 80947 TIM WENDT (719) 668-3556
TRAFFIC ENGINEERING:	EL PASO COUNTY DEPARTMENT OF PUBLIC WORKS 3275 AKERS DRIVE COLORADO SPRINGS, CO 80922 JENNIFER IRVINE, P.E. (719) 520-6460	ELECTRIC DEPARTMENT:	MOUNTAIN VIEW ELECTRIC 11140 E. WOODMEN ROAD FALCON, CO 80831 (719) 495-2283

BASIS OF BEARINGS

THE NORTH LINE OF THE NORTHWEST QUARTER OF THE NORTHEAST QUARTER OF SECTION 5, TOWNSHIP 13 SOUTH, RANGE 65 WEST OF THE 6TH PRINCIPAL MERIDIAN, BEING MONUMENTED AT THE NORTHEAST CORNER OF THE NORTHWEST QUARTER OF THE NORTHEAST QUARTER OF SECTION 5, BY A 3-1/4" ALUMINUM CAP STAMPED "LS 10376" AND AT THE NORTH QUARTER CORNER BY A 3-1/4" ALUMINUM CAP STAMPED "LS 4842 1996", BEARING S89°14'13"W.

SHEET INDEX

1	- COVER SHEET
2	- LEGEND
3-5	- INITIAL-INTERIM GEC
6-8	- FINAL GEC
9	- OUTFALL CHANNEL PLAN & PROFILE
10-11	- GEC DETAILS

BENCHMARKS

- THE TOP OF AN ALUMINUM SURVEYORS CAP, STAMPED "9853", AT THE SOUTHEAST BOUNDARY CORNER OF BARBARICK SUBDIVISION
NORTHING = 41145.273
EASTING = 235167.071
ELEVATION = 7023.42
- THE TOP OF A RED PLASTIC SURVEYORS CAP, ILLEGIBLE, AT THE NORTHWEST BOUNDARY CORNER OF PANWEE RANCHEROS SUBDIVISION
NORTHING = 410095.404
EASTING = 235052.131
ELEVATION = 7000.40
- THE TOP OF A RED PLASTIC SURVEYORS CAP, STAMPED "38141", AT THE SOUTHWEST BOUNDARY CORNER OF BARBARICK SUBDIVISION
NORTHING = 411399.962
EASTING = 233849.817
ELEVATION = 7030.82

STANDARD NOTES FOR EL PASO COUNTY CONSTRUCTION PLANS:

- ALL DRAINAGE AND ROADWAY CONSTRUCTION SHALL MEET THE STANDARDS AND SPECIFICATIONS OF THE CITY OF COLORADO SPRINGS/EL PASO COUNTY DRAINAGE CRITERIA MANUAL, VOLUMES 1 AND 2, AND THE EL PASO COUNTY ENGINEERING CRITERIA MANUAL.
 - CONTRACTOR SHALL BE RESPONSIBLE FOR THE NOTIFICATION AND FIELD NOTIFICATION OF ALL EXISTING UTILITIES, WHETHER SHOWN ON THE PLANS OR NOT, BEFORE BEGINNING CONSTRUCTION. LOCATION OF EXISTING UTILITIES SHALL BE VERIFIED BY THE CONTRACTOR PRIOR TO CONSTRUCTION. CALL 811 TO CONTACT THE UTILITY NOTIFICATION CENTER OF COLORADO (UNCC).
 - CONTRACTOR SHALL KEEP A COPY OF THESE APPROVED PLANS, THE GRADING AND EROSION CONTROL PLAN, THE STORMWATER MANAGEMENT PLAN (SWMP), THE SOILS AND GEOTECHNICAL REPORT, AND THE APPROPRIATE DESIGN AND CONSTRUCTION STANDARDS AND SPECIFICATIONS AT THE JOB SITE AT ALL TIMES, INCLUDING THE FOLLOWING:
 - EL PASO COUNTY ENGINEERING CRITERIA MANUAL (ECM)
 - CITY OF COLORADO SPRINGS/EL PASO COUNTY DRAINAGE CRITERIA MANUAL, VOLUMES 1 AND 2
 - COLORADO DEPARTMENT OF TRANSPORTATION (CDOT) STANDARD SPECIFICATIONS FOR ROAD AND BRIDGE CONSTRUCTION
 - CDOT M & S STANDARDS
 - NOTWITHSTANDING ANYTHING DEPICTED IN THESE PLANS IN WORDS OR GRAPHIC REPRESENTATION, ALL DESIGN AND CONSTRUCTION RELATED TO ROADS, STORM DRAINAGE AND EROSION CONTROL SHALL CONFORM TO THE STANDARDS AND REQUIREMENTS OF THE MOST RECENT VERSION OF THE RELEVANT ADOPTED EL PASO COUNTY STANDARDS, INCLUDING THE LAND DEVELOPMENT CODE, THE ENGINEERING CRITERIA MANUAL, THE DRAINAGE CRITERIA MANUAL, AND THE DRAINAGE CRITERIA MANUAL VOLUME 2. ANY DEVIATIONS FROM REGULATIONS AND STANDARDS MUST BE REQUESTED, AND APPROVED, IN WRITING. ANY MODIFICATIONS NECESSARY TO MEET CRITERIA AFTER-THE-FACT WILL BE ENTIRELY THE DEVELOPER'S RESPONSIBILITY TO RECTIFY.
 - IT IS THE DESIGN ENGINEER'S RESPONSIBILITY TO ACCURATELY SHOW EXISTING CONDITIONS, BOTH ONSITE AND OFFSITE, ON THE CONSTRUCTION PLANS. ANY MODIFICATIONS NECESSARY DUE TO CONFLICTS, OMISSIONS, OR CHANGED CONDITIONS WILL BE ENTIRELY THE DEVELOPER'S RESPONSIBILITY TO RECTIFY.
 - CONTRACTOR SHALL SCHEDULE A PRE-CONSTRUCTION MEETING WITH EL PASO COUNTY PLANNING AND COMMUNITY DEVELOPMENT (PCD) - INSPECTIONS, PRIOR TO STARTING CONSTRUCTION.
 - IT IS THE CONTRACTOR'S RESPONSIBILITY TO UNDERSTAND THE REQUIREMENTS OF ALL JURISDICTIONAL AGENCIES AND TO OBTAIN ALL REQUIRED PERMITS, INCLUDING BUT NOT LIMITED TO EL PASO COUNTY EROSION AND STORMWATER QUALITY CONTROL PERMIT (ESQCP), REGIONAL BUILDING FLOODPLAIN DEVELOPMENT PERMIT, U.S. ARMY CORPS OF ENGINEERS-ISSUED 401 AND/OR 404 PERMITS, AND COUNTY AND STATE FUGITIVE DUST PERMITS.
 - CONTRACTOR SHALL NOT DEVIATE FROM THE PLANS WITHOUT FIRST OBTAINING WRITTEN APPROVAL FROM THE DESIGN ENGINEER AND PCD. CONTRACTOR SHALL NOTIFY THE DESIGN ENGINEER IMMEDIATELY UPON DISCOVERY OF ANY ERRORS OR INCONSISTENCIES.
- ALL STORM DRAIN PIPE SHALL BE CLASS III RCP UNLESS OTHERWISE NOTED AND APPROVED BY PCD.
- CONTRACTOR SHALL COORDINATE GEOTECHNICAL TESTING PER ECM STANDARDS. PAVEMENT DESIGN SHALL BE APPROVED BY EL PASO COUNTY PCD PRIOR TO PLACEMENT OF CURB AND GUTTER AND PAVEMENT.
- ALL CONSTRUCTION TRAFFIC MUST ENTER/EXIT THE SITE AT APPROVED CONSTRUCTION ACCESS POINTS.
- SIGHT VISIBILITY TRIANGLES AS IDENTIFIED IN THE PLANS SHALL BE PROVIDED AT ALL INTERSECTIONS. OBSTRUCTIONS GREATER THAN 18 INCHES ABOVE FLOWLINE ARE NOT ALLOWED WITHIN SIGHT TRIANGLES.
 - SIGNING AND STRIPING SHALL COMPLY WITH EL PASO COUNTY PCD AND MUTCD CRITERIA. [IF APPLICABLE, ADDITIONAL SIGNING AND STRIPING NOTES WILL BE PROVIDED.]
 - CONTRACTOR SHALL OBTAIN ANY PERMITS REQUIRED BY EL PASO COUNTY DPW, INCLUDING WORK WITHIN THE RIGHT-OF-WAY AND SPECIAL TRANSPORT PERMITS.
 - THE LIMITS OF CONSTRUCTION SHALL REMAIN WITHIN THE PROPERTY LINE UNLESS OTHERWISE NOTED. THE OWNER/DEVELOPER SHALL OBTAIN WRITTEN PERMISSION AND EASEMENTS, WHERE REQUIRED, FROM ADJOINING PROPERTY OWNER(S) PRIOR TO ANY OFF-SITE DISTURBANCE, GRADING, OR CONSTRUCTION.

EL PASO COUNTY STATEMENT

COUNTY PLAN REVIEW IS PROVIDED ONLY FOR GENERAL CONFORMANCE WITH COUNTY DESIGN CRITERIA. THE COUNTY IS NOT RESPONSIBLE FOR THE ACCURACY AND ADEQUACY OF THE DESIGN, DIMENSIONS, AND/OR ELEVATIONS WHICH SHALL BE CONFIRMED AT THE JOB SITE. THE COUNTY THROUGH THE APPROVAL OF THIS DOCUMENT ASSUMES NO RESPONSIBILITY FOR COMPLETENESS AND/OR ACCURACY OF THIS DOCUMENT.

FILED IN ACCORDANCE WITH THE REQUIREMENTS OF THE EL PASO COUNTY LAND DEVELOPMENT CODE, DRAINAGE CRITERIA MANUAL, VOLUMES 1 AND 2, AND ENGINEERING CRITERIA MANUAL AS AMENDED.

IN ACCORDANCE WITH ECM SECTION 1.12, THESE CONSTRUCTION DOCUMENTS WILL BE VALID FOR CONSTRUCTION FOR A PERIOD OF 2 YEARS FROM THE DATE SIGNED BY THE EL PASO COUNTY ENGINEER. IF CONSTRUCTION HAS NOT STARTED WITHIN THOSE 2 YEARS, THE PLANS WILL NEED TO BE RESUBMITTED FOR APPROVAL, INCLUDING PAYMENT OF REVIEW FEES AT THE PLANNING AND COMMUNITY DEVELOPMENT DIRECTORS DISCRETION.

JOSHUA PALMER, P.E. DATE
COUNTY ENGINEER/ECM ADMINISTRATOR

OWNER/DEVELOPER STATEMENT

I, THE OWNER/DEVELOPER HAVE READ AND WILL COMPLY WITH THE REQUIREMENTS OF THE GRADING AND EROSION CONTROL PLAN.

ERIC HOWARD DATE
RHETORIC, LLC
20 BOULDER CRESCENT, SUITE 200
COLORADO SPRINGS, CO 80903

ENGINEER'S STATEMENT

THIS GRADING AND EROSION CONTROL PLAN WAS PREPARED UNDER MY DIRECTION AND SUPERVISION AND IS CORRECT TO THE BEST OF MY KNOWLEDGE AND BELIEF. SAID PLAN HAS BEEN PREPARED ACCORDING TO THE CRITERIA ESTABLISHED BY THE COUNTY FOR GRADING AND EROSION CONTROL PLANS. I ACCEPT RESPONSIBILITY FOR ANY LIABILITY CAUSED BY ANY NEGLIGENT ACTS, ERRORS OR OMISSIONS ON MY PART IN PREPARING THESE PLANS.

RYAN E. BURNS, P.E. DATE
COLORADO P.E. 54412
FOR AND ON BEHALF OF ALL TERRAIN ENGINEERING, LLC



PREPARED FOR:
TURKEY CANON QUARRY INC.
20 BOULDER CRESCENT STREET, SUITE 201
COLORADO SPRINGS, CO 80903
ATTN: JIM MORLEY
(719) 491-3024
###

UNTIL SUCH TIME AS THESE DRAWINGS ARE APPROVED BY THE APPROPRIATE REVIEWING AGENCIES, ALL TERRAIN ENGINEERING APPROVES THEIR USE ONLY FOR THE PURPOSES DESIGNATED BY WRITTEN AUTHORIZATION.

DATE	LOCATION: ###	JOB NO: 24013	REV DESCRIPTION

SCHMIDT PHASE 1 - DISTRICT INFRASTRUCTURE
COVER SHEET

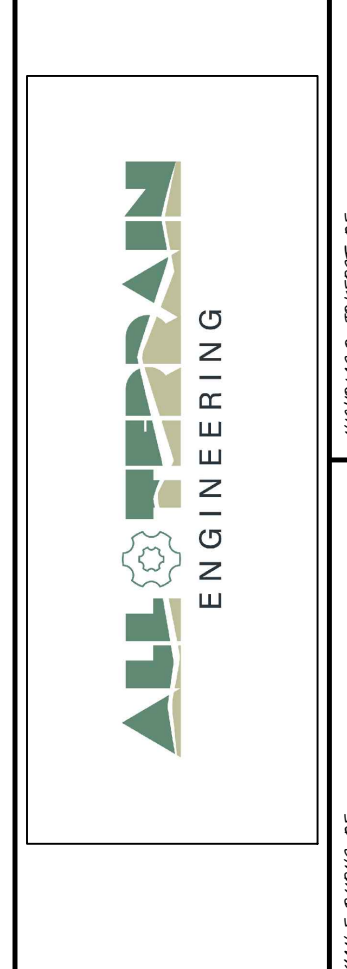
DESIGN: REB
REVIEW: NOJ
DATE: 08/10/2024

H-SCALE: 1" = 50'

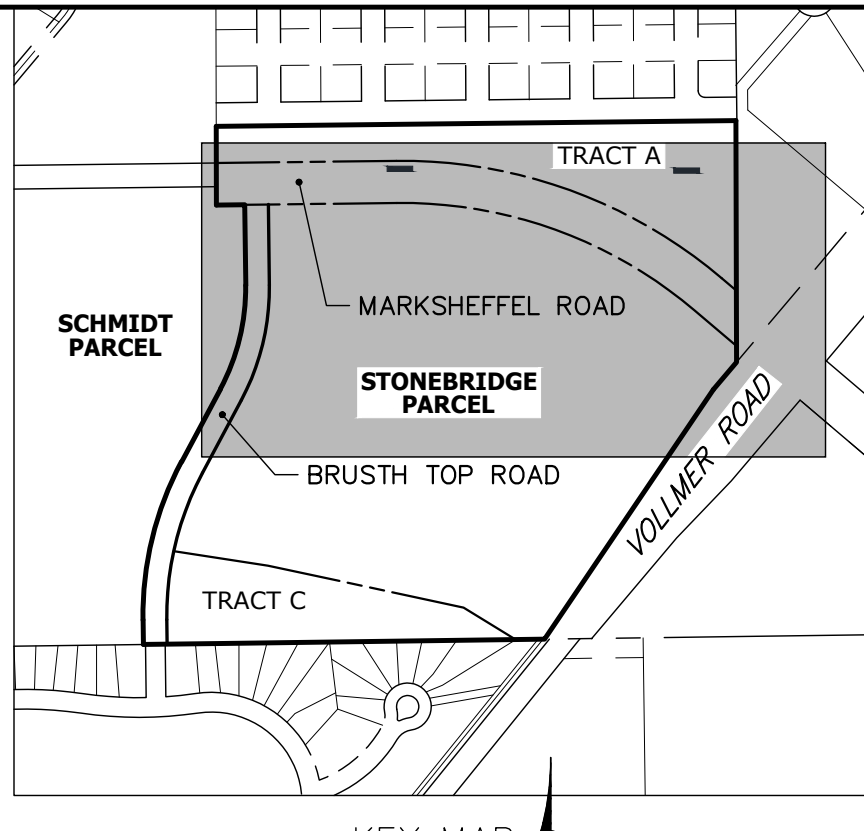
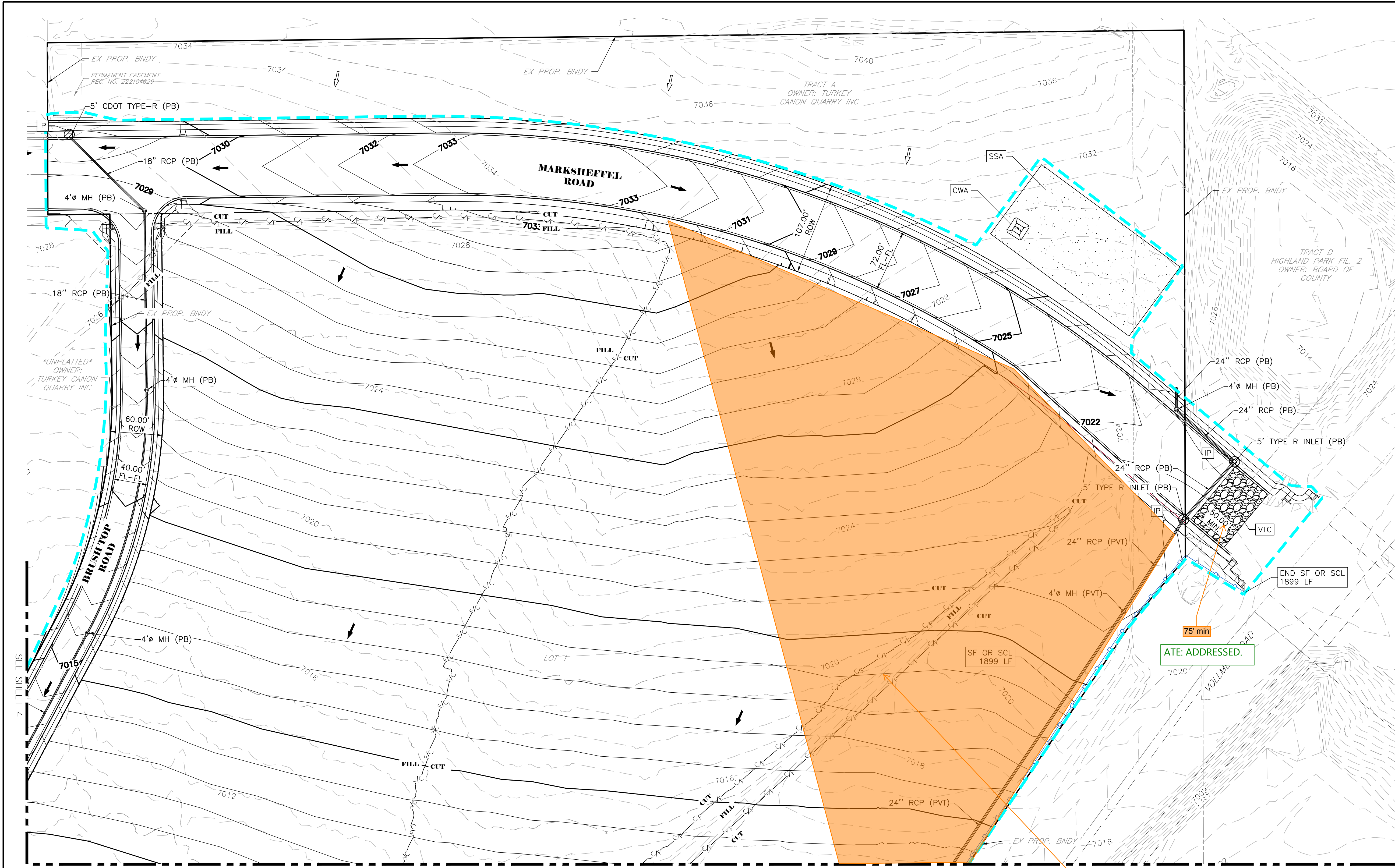
V-SCALE: 1" = 5'

SHEET

1 OF 12



PREPARED FOR:
TURKEY CANON QUARRY INC.
20 BOULDER CRESCENT STREET, SUITE 201
COLORADO SPRINGS, CO 80903
ATTN: JIM MORLEY
(719) 491-3024
###



- GEC LEGEND:**
- CULVERT PROTECTION
 - CONCRETE WASHOUT AREA
 - INLET PROTECTION
 - EX FLOW DIRECTION
PR FLOW DIRECTION
 - SEDIMENT CONTROL LOG
 - DIVERSION DITCH
 - SILT FENCE
 - LIMITS OF DISTURBANCE
 - STABILIZED STAGING AREA
 - STOCKPILE PROTECTION
 - VEHICLE TRACKING CONTROL
 - SEEDING & MULCHING
 - EROSION CONTROL BLANKET
 - DO NOT DISTURB

GEC Checklist Item 1 - Show existing vegetation or provide note describing vegetation on site. SWMP Checklist Item 17f - If no batch plants are anticipated on site add a note stating this.

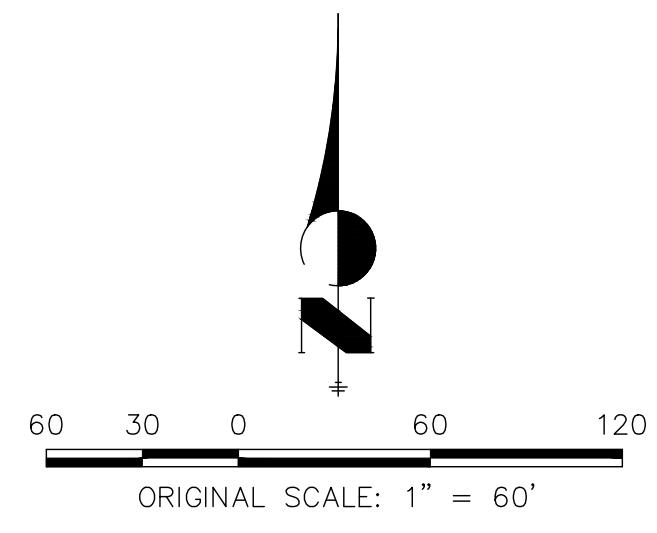
ATE: ADDRESSED.

This entire parcel will be disturbed and should incorporate diversion swales or berms to convey the runoff to the TSB and eventually EDB. As of now it appears that portions of the parcel will sheet flow off the parcel and bypass the pond. Typical comment

ATE: ADDRESSED. SEE REVISED GEC PLAN & DRAINAGE REPORT.



THE LOCATIONS OF EXISTING ABOVE GROUND AND UNDERGROUND UTILITIES ARE SHOWN IN AN APPROXIMATE WAY ONLY. THE CONTRACTOR SHALL DETERMINE THE EXACT LOCATION OF ALL EXISTING UTILITIES BEFORE COMMENCING WORK. THE CONTRACTOR SHALL BE FULLY RESPONSIBLE FOR ANY AND ALL DAMAGES WHICH MIGHT BE CAUSED BY HIS FAILURE TO EXACTLY LOCATE AND PRESERVE ANY AND ALL ABOVE GROUND AND UNDERGROUND UTILITIES.



ENGINEER'S STATEMENT
 PREPARED UNDER MY DIRECT SUPERVISION AND ON BEHALF OF ALL TERRAIN ENGINEERING
 RYAN E. BURNS, P.E.
 COLORADO P.E. 54412
 FOR AND ON BEHALF OF JR ENGINEERING, LLC



PREPARED FOR:
 TURKEY CANYON QUARRY INC.
 20 BOULDER CRESCENT STREET, SUITE 100
 COLORADO SPRINGS, CO 80903
 ATTN: JIM MORLEY
 (719) 491-3024
 #####

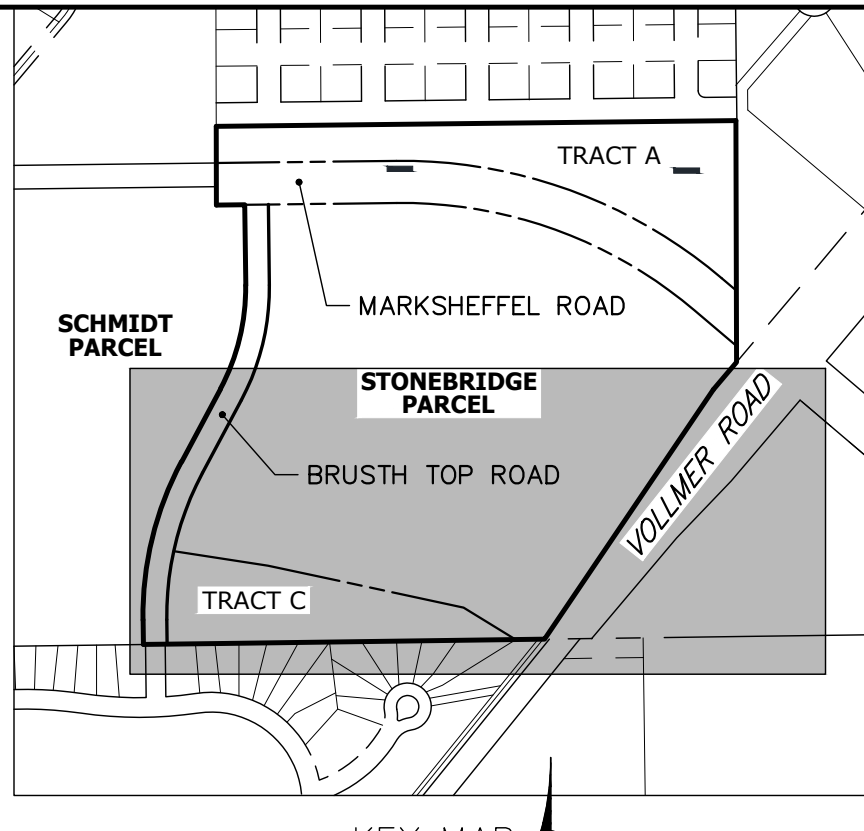
UNTIL SUCH TIME AS THESE DRAWINGS ARE APPROVED BY THE APPROPRIATE REVIEWING AGENCIES, ALL TERRAIN ENGINEERING APPROVES THEIR USE ONLY FOR THE PURPOSES DESIGNATED BY WRITTEN AUTHORIZATION.

DATE	DESCRIPTION

JOB NO: 24013 LOCATION: COS
 SCHMIDT PHASE 1 - DISTRICT INFRASTRUCTURE
 INITIAL-INTERIM GEC

DESIGN: REB
 REVIEW: NOJ
 DATE: 08/10/2024
 H-SCALE: 1" = 50'
 V-SCALE: 1" = 5'
 SHEET
 3 OF 12

SEE SHEET 3



- GEC LEGEND:**
- CULVERT PROTECTION
 - CONCRETE WASHOUT AREA
 - INLET PROTECTION
 - EX FLOW DIRECTION
PR FLOW DIRECTION
 - SEDIMENT CONTROL LOG
 - DIVERSION DITCH
 - SILT FENCE
 - LIMITS OF DISTURBANCE
 - STABILIZED STAGING AREA
 - STOCKPILE PROTECTION
 - VEHICLE TRACKING CONTROL
 - SEEDING & MULCHING
 - EROSION CONTROL BLANKET
 - DO NOT DISTURB



PREPARED FOR:
TURKEY CANYON QUARRY INC.
100
OLD CRESTENT STREET, SUITE 100
COLORADO SPRINGS, CO 80903
ATTN: JIM MORLEY
(719) 491-3024
####

UNTIL SUCH TIME AS THESE
DRAWINGS ARE APPROVED BY THE
APPROPRIATE REVIEWING 20
AGENCIES, ALL TERRAIN
ENGINEERING APPROVES THEIR
USE ONLY FOR THE PURPOSES
DESIGNATED BY WRITTEN
AUTHORIZATION.

DATE	DESCRIPTION

JOB NO: 24013 LOCATION: COS
SCHMIDT PHASE 1 - DISTRICT INFRASTRUCTURE
INITIAL-INTERIM GEC (2)

Provide name for pond
(Pond A per the LOI)
ATE: ADDRESSED.

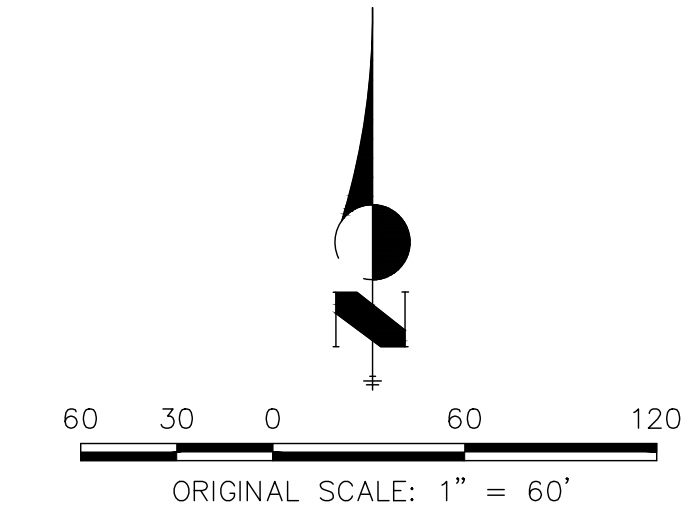
GEC Checklist Item x - TSBs shall be
provided for disturbed drainage areas greater
than 1 ac. In the initial/interim conditions
there should be a TSB treating the site, this
includes any necessary diversion swales
necessary to convey runoff to the TSB prior
to the storm drain installation.

ATE: ADDRESSED.
SEE REVISED GEC
PLAN.



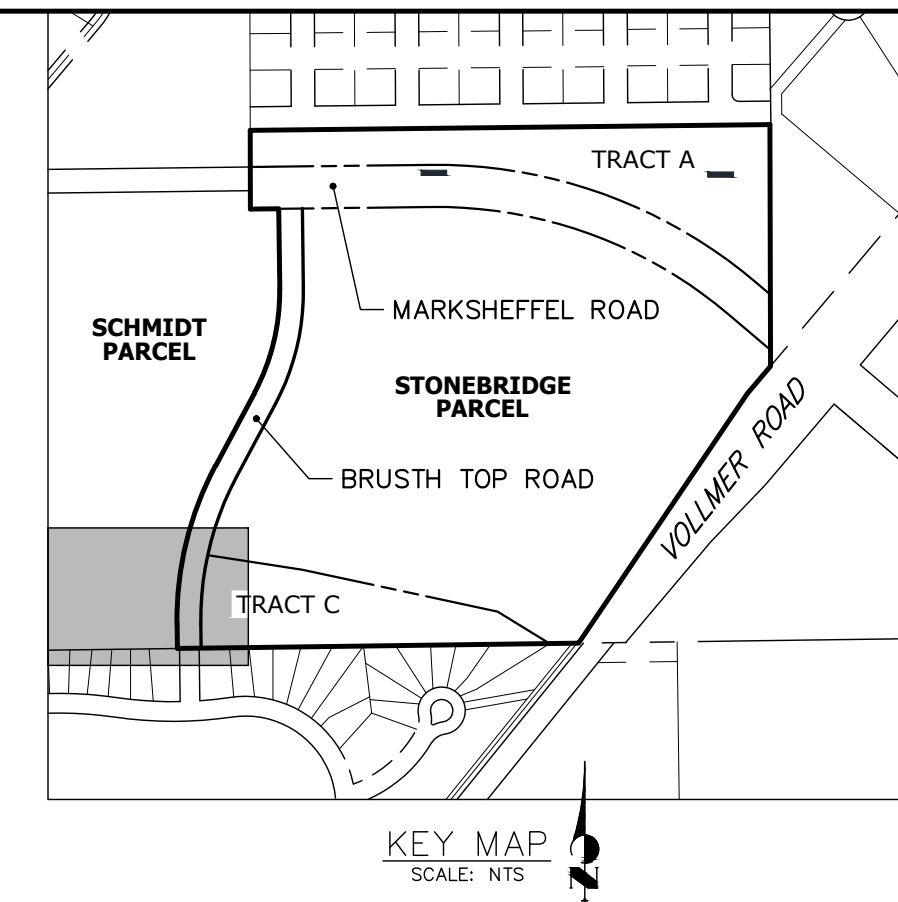
Know what's below.
Call before you dig.

THE LOCATIONS OF EXISTING ABOVE GROUND AND UNDERGROUND UTILITIES ARE SHOWN IN AN APPROXIMATE WAY ONLY. THE CONTRACTOR SHALL DETERMINE THE EXACT LOCATION OF ALL EXISTING UTILITIES BEFORE COMMENCING WORK. THE CONTRACTOR SHALL BE FULLY RESPONSIBLE FOR ANY AND ALL DAMAGES WHICH MIGHT BE CAUSED BY HIS FAILURE TO EXACTLY LOCATE AND PRESERVE ANY AND ALL ABOVE GROUND AND UNDERGROUND UTILITIES.



ENGINEER'S STATEMENT
PREPARED UNDER MY DIRECT SUPERVISION AND ON BEHALF OF ALL TERRAIN ENGINEERING
RYAN E. BURNS, P.E.
COLORADO P.E. 54412
FOR AND ON BEHALF OF JR ENGINEERING, LLC

DESIGN: REB
REVIEW: NOJ
DATE: 08/10/2024
H-SCALE: 1" = 60'
V-SCALE: 1" = 6'
SHEET
4 OF 12

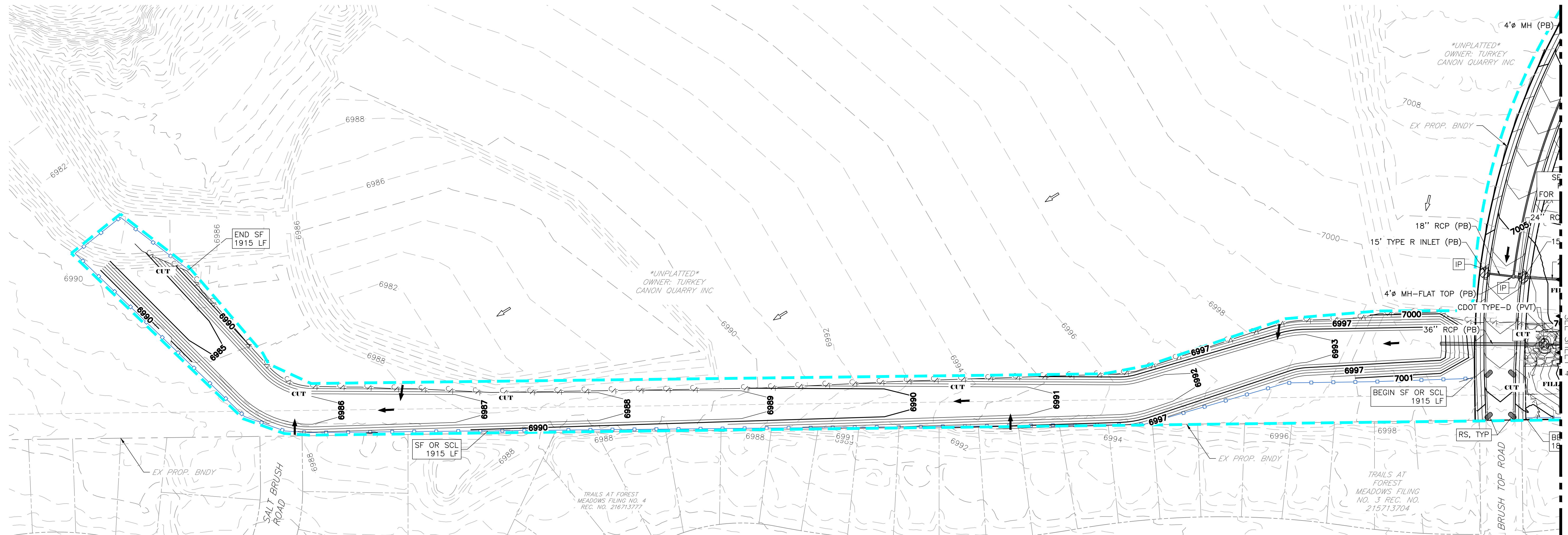


PREPARED FOR:
 TURKEY CANON QUARRY INC.
 20 BOULDER CRESCENT STREET, SUITE 100
 COLORADO SPRINGS, CO 80903
 ATTN: JIM MORLEY
 (719) 491-3024
 #####

UNTIL SUCH TIME AS THESE DRAWINGS ARE APPROVED BY THE APPROPRIATE REVIEWING AGENCIES, ALL TERRAIN ENGINEERING APPROVES THEIR USE ONLY FOR THE PURPOSES DESIGNATED BY WRITTEN AUTHORIZATION.

DATE	DESCRIPTION

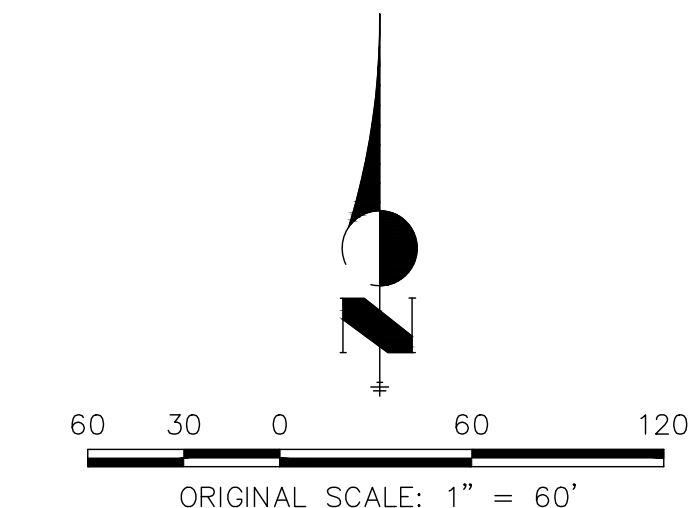
JOB NO: 24013
 LOCATION: CO
 SCHMIDT PHASE 1 - DISTRICT INFRASTRUCTURE
 INITIAL-INTERM-GEC (3)



- GEC LEGEND:**
- CULVERT PROTECTION
 - CONCRETE WASHOUT AREA
 - INLET PROTECTION
 - EX FLOW DIRECTION
PR FLOW DIRECTION
 - SEDIMENT CONTROL LOG
 - DIVERSION DITCH
 - SILT FENCE
 - LIMITS OF DISTURBANCE
 - STABILIZED STAGING AREA
 - STOCKPILE PROTECTION
 - VEHICLE TRACKING CONTROL
 - SEEDING & MULCHING
 - EROSION CONTROL BLANKET
 - DO NOT DISTURB



THE LOCATIONS OF EXISTING ABOVE GROUND AND UNDERGROUND UTILITIES ARE SHOWN IN AN APPROXIMATE WAY ONLY. THE CONTRACTOR SHALL DETERMINE THE EXACT LOCATION OF ALL EXISTING UTILITIES BEFORE COMMENCING WORK. THE CONTRACTOR SHALL BE FULLY RESPONSIBLE FOR ANY AND ALL DAMAGES WHICH MIGHT BE CAUSED BY HIS FAILURE TO EXACTLY LOCATE AND PRESERVE ANY AND ALL ABOVE GROUND AND UNDERGROUND UTILITIES.

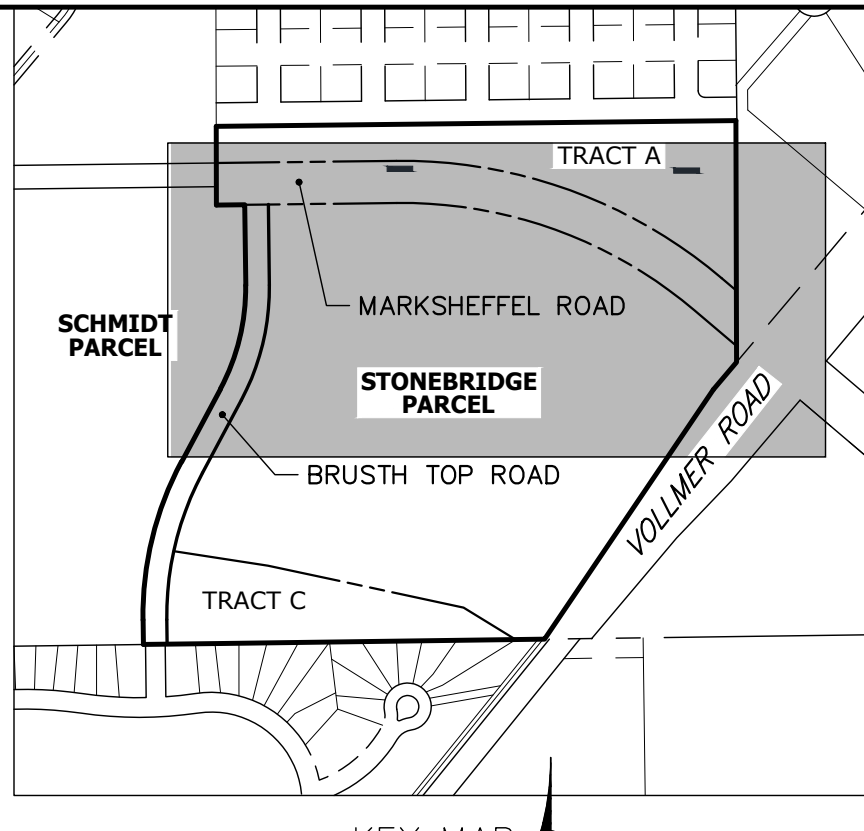
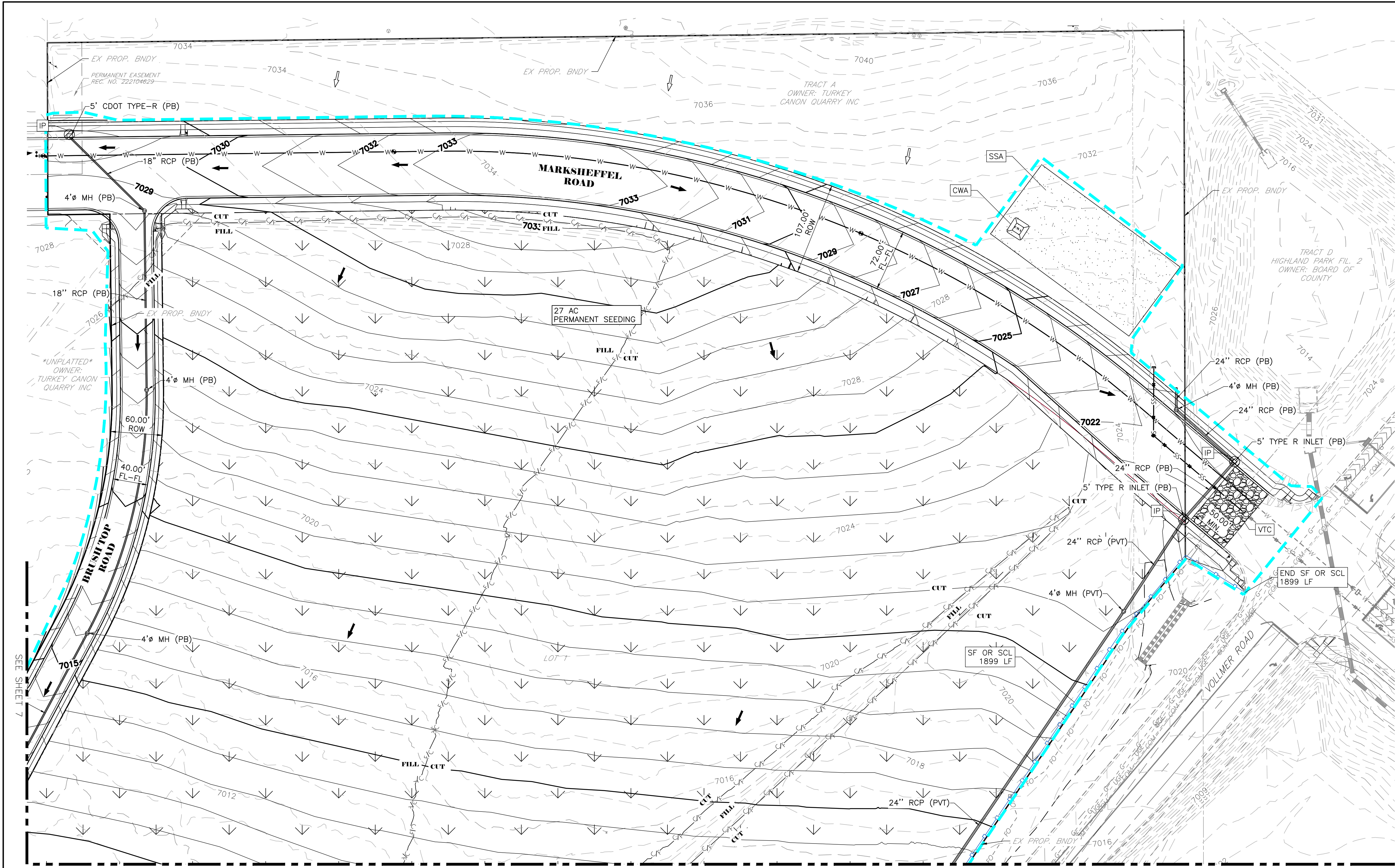


ENGINEER'S STATEMENT
 PREPARED UNDER MY DIRECT SUPERVISION AND ON BEHALF OF ALL TERRAIN ENGINEERING

RYAN E. BURNS, P.E.
 COLORADO P.E. 54412
 FOR AND ON BEHALF OF JR ENGINEERING, LLC

DATE

DESIGN: REB
 REVIEW: NOJ
 DATE: 08/10/2024
 (H)-SCALE: 1" = 60'
 (V)-SCALE: 1" = 6'
 SHEET
 5 OF 12



- GEC LEGEND:**
- CULVERT PROTECTION
 - CONCRETE WASHOUT AREA
 - INLET PROTECTION
 - EX FLOW DIRECTION
PR FLOW DIRECTION
 - SEDIMENT CONTROL LOG
 - DIVERSION DITCH
 - SILT FENCE
 - LIMITS OF DISTURBANCE
 - STABILIZED STAGING AREA
 - STOCKPILE PROTECTION
 - VEHICLE TRACKING CONTROL
 - SEEDING & MULCHING
 - EROSION CONTROL BLANKET
 - DO NOT DISTURB



PREPARED FOR:
 TURKEY CANYON QUARRY INC.
 20 BOULDER CRESCENT STREET, SUITE 100
 COLORADO SPRINGS, CO 80903
 ATTN: JIM MORLEY
 (719) 491-3024
 #####

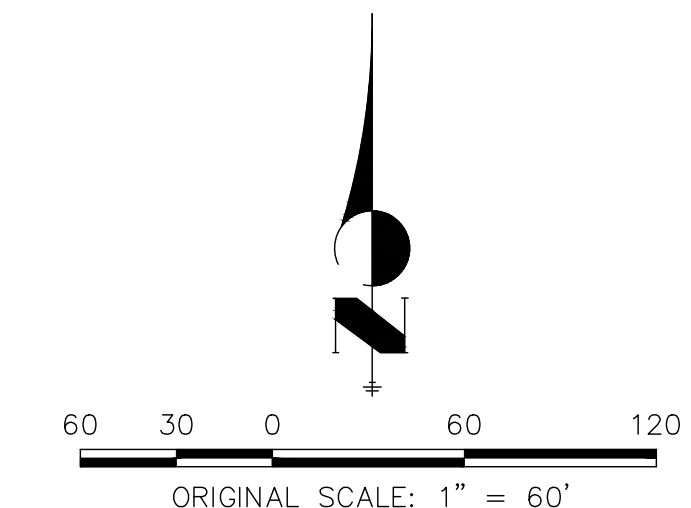
UNTIL SUCH TIME AS THESE
 DRAWINGS ARE APPROVED BY THE
 APPROPRIATE REVIEWING
 AGENCIES, ALL TERRAIN
 ENGINEERING APPROVES THEIR
 USE ONLY FOR THE PURPOSES
 DESIGNATED BY WRITTEN
 AUTHORIZATION.

DATE	DESCRIPTION

JOB NO: 24013 LOCATION: COS
 SCHMIDT PHASE 1 - DISTRICT INFRASTRUCTURE
 FINAL GEC



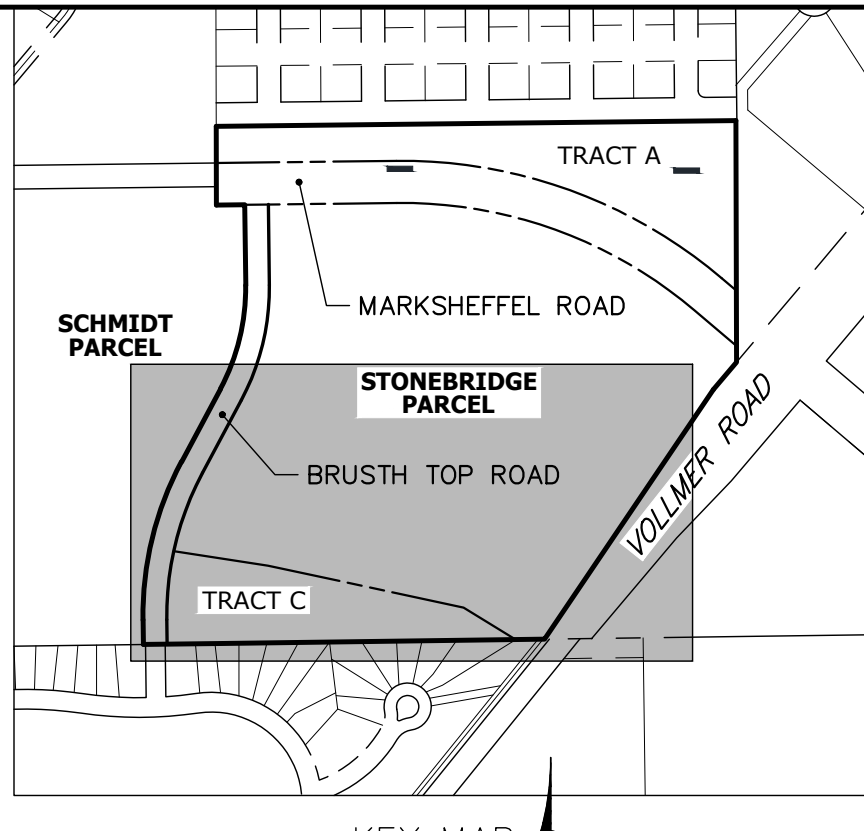
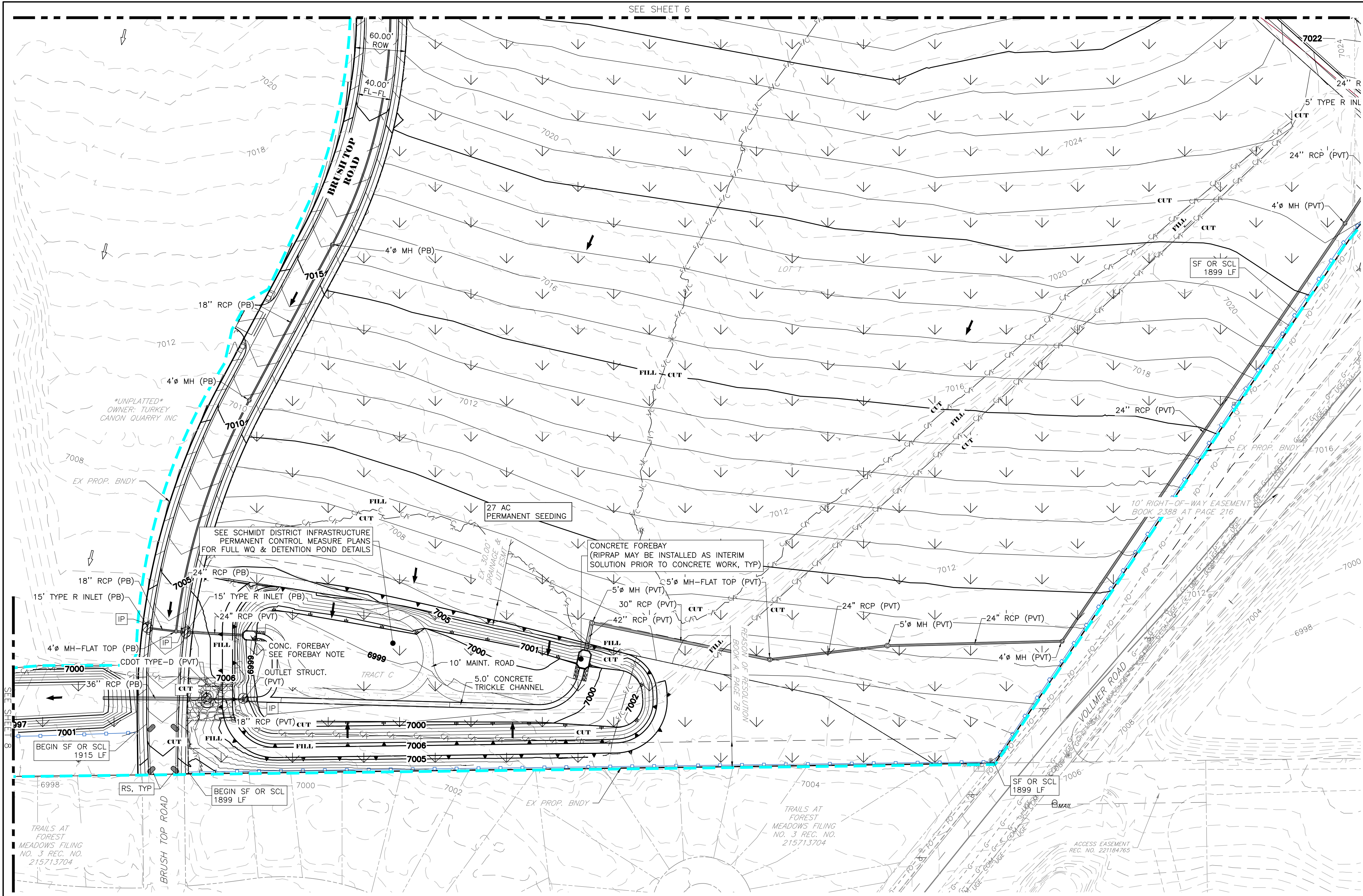
THE LOCATIONS OF EXISTING ABOVE GROUND AND UNDERGROUND UTILITIES ARE SHOWN IN AN APPROXIMATE WAY ONLY. THE CONTRACTOR SHALL DETERMINE THE EXACT LOCATION OF ALL EXISTING UTILITIES BEFORE COMMENCING WORK. THE CONTRACTOR SHALL BE FULLY RESPONSIBLE FOR ANY AND ALL DAMAGES WHICH MIGHT BE CAUSED BY HIS FAILURE TO EXACTLY LOCATE AND PRESERVE ANY AND ALL ABOVE GROUND AND UNDERGROUND UTILITIES.



ENGINEER'S STATEMENT
 PREPARED UNDER MY DIRECT SUPERVISION AND ON BEHALF OF ALL TERRAIN ENGINEERING
 RYAN E. BURNS, P.E.
 COLORADO P.E. 54412
 FOR AND ON BEHALF OF JR ENGINEERING, LLC
 DATE

DESIGN: REB
 REVIEW: NOJ
 DATE: 08/10/2024
 H-SCALE: 1" = 60'
 V-SCALE: 1" = 6'
 SHEET
 6 OF 12

SEE SHEET 6



- GEC LEGEND:**
- CULVERT PROTECTION
 - CONCRETE WASHOUT AREA
 - INLET PROTECTION
 - EX FLOW DIRECTION
PR FLOW DIRECTION
 - SEDIMENT CONTROL LOG
 - DIVERSION DITCH
 - SILT FENCE
 - LIMITS OF DISTURBANCE
 - STABILIZED STAGING AREA
 - STOCKPILE PROTECTION
 - VEHICLE TRACKING CONTROL
 - SEEDING & MULCHING
 - EROSION CONTROL BLANKET
 - DO NOT DISTURB



PREPARED FOR:
TURKEY CANYON QUARRY INC.
100
OLD CREEK STREET, SUITE 100
COLORADO SPRINGS, CO 80903
ATTN: JIM MORLEY
(719) 491-3024
###

UNTIL SUCH TIME AS THESE
DRAWINGS ARE APPROVED BY THE
APPROPRIATE REVIEWING AGENCIES,
ALL TERRAIN ENGINEERING APPROVES THEIR
USE ONLY FOR THE PURPOSES
DESIGNATED BY WRITTEN
AUTHORIZATION.

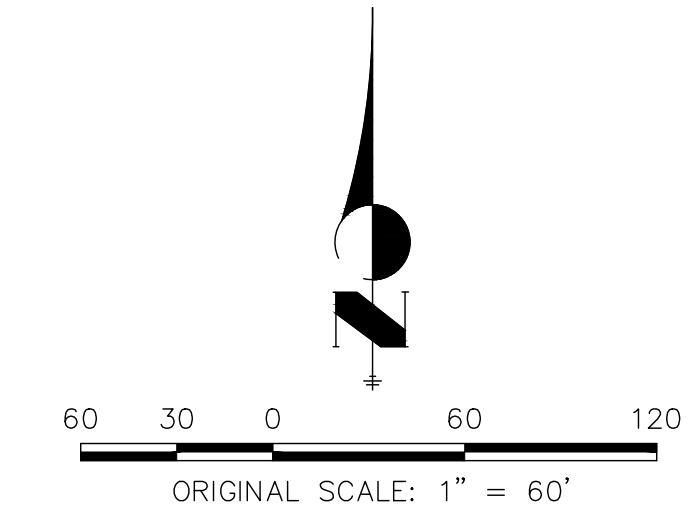
DATE	DESCRIPTION

JOB NO: 24013 LOCATION: COS
SCHMIDT PHASE 1 - DISTRICT INFRASTRUCTURE
FINAL GEC (2)



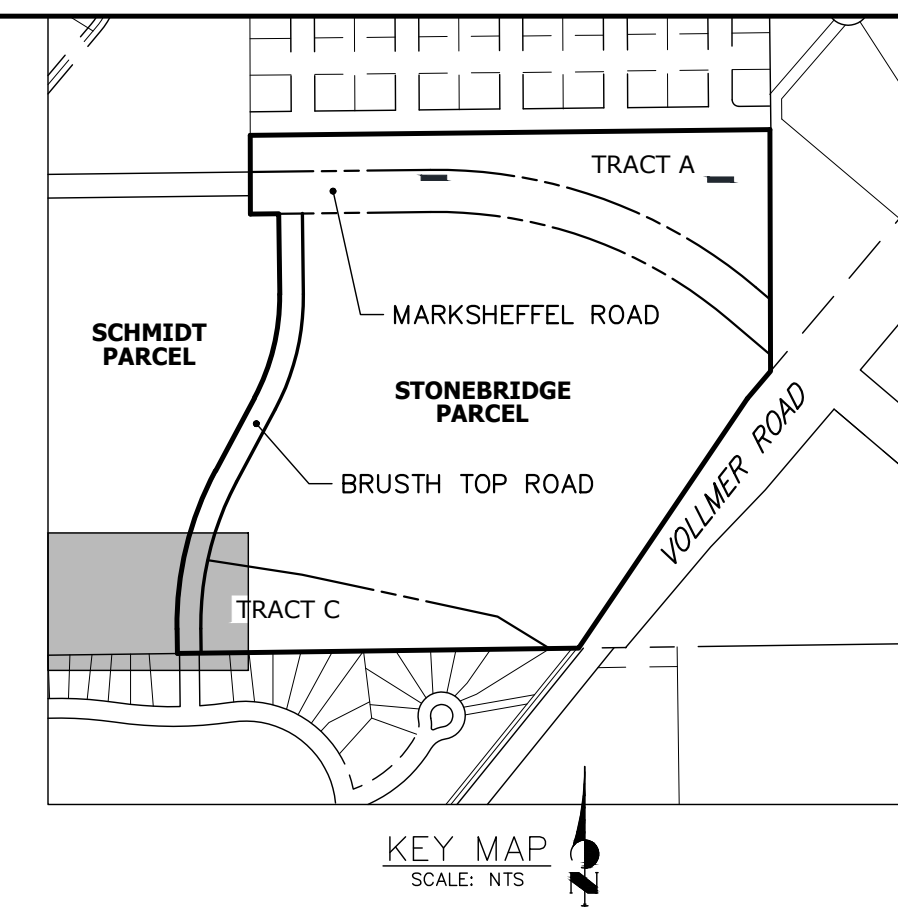
Know what's below.
Call before you dig.

THE LOCATIONS OF EXISTING ABOVE GROUND AND UNDERGROUND UTILITIES ARE SHOWN IN AN APPROXIMATE WAY ONLY. THE CONTRACTOR SHALL DETERMINE THE EXACT LOCATION OF ALL EXISTING UTILITIES BEFORE COMMENCING WORK. THE CONTRACTOR SHALL BE FULLY RESPONSIBLE FOR ANY AND ALL DAMAGES WHICH MIGHT BE CAUSED BY HIS FAILURE TO EXACTLY LOCATE AND PRESERVE ANY AND ALL ABOVE GROUND AND UNDERGROUND UTILITIES.



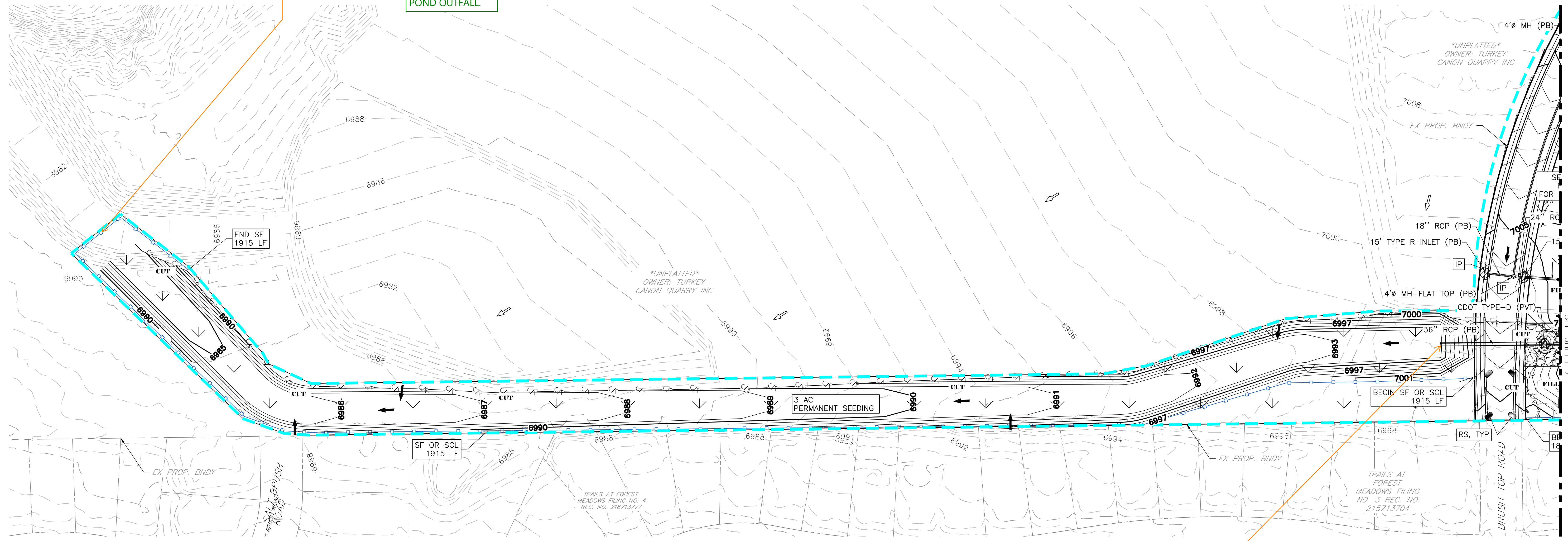
ENGINEER'S STATEMENT
PREPARED UNDER MY DIRECT SUPERVISION AND ON BEHALF OF ALL TERRAIN ENGINEERING
DATE: 08/10/2024
RYAN E. BURNS, P.E.
COLORADO P.E. 54412
FOR AND ON BEHALF OF JR ENGINEERING, LLC

DESIGN: REB
REVIEW: NOJ
DATE: 08/10/2024
H-SCALE: 1" = 60'
V-SCALE: 1" = 6'
SHEET
7 OF 12



Will this silt fence be sufficient at the flowline of the existing channel? The silt fence could blow out with this significant of concentrated flow. Silt fence should be placed on the contour and in areas where the tributary area is <math>< 1/4</math> acre per 100' of SF. All silt fence not running parallel to contours shall be installed with J-hooks or adjusted as necessary.

ATE: ADDRESSED. SEE REVISED GEC PLAN. RIPRAP PROPOSED AT POND OUTFALL.



PREPARED FOR:
TURKEY CANON QUARRY INC.
20 BOULDER CRESCENT STREET, SUITE 100
COLORADO SPRINGS, CO 80903
ATTN: JIM MORLEY
(719) 491-3024
#####

UNTIL SUCH TIME AS THESE DRAWINGS ARE APPROVED BY THE APPROPRIATE REVIEWING AGENCIES, ALL TERRAIN ENGINEERING APPROVES THEIR USE ONLY FOR THE PURPOSES DESIGNATED BY WRITTEN AUTHORIZATION.

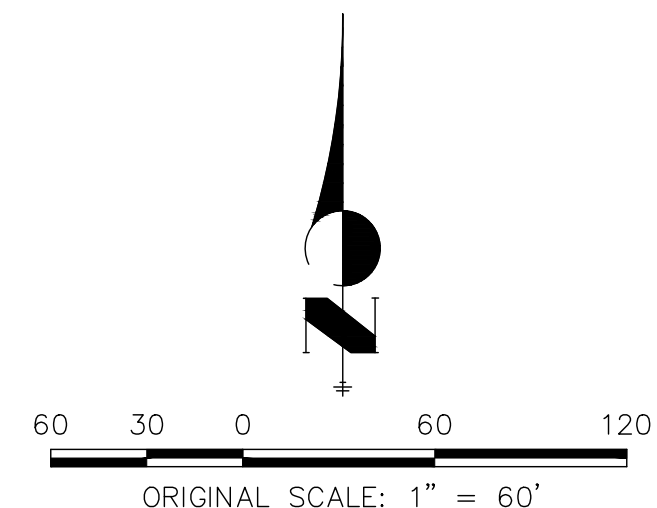
DATE	DESCRIPTION

- GEC LEGEND:**
- CULVERT PROTECTION
 - CONCRETE WASHOUT AREA
 - INLET PROTECTION
 - EX FLOW DIRECTION
PR FLOW DIRECTION
 - SEDIMENT CONTROL LOG
 - DIVERSION DITCH
 - SILT FENCE
 - LIMITS OF DISTURBANCE
 - STABILIZED STAGING AREA
 - STOCKPILE PROTECTION
 - VEHICLE TRACKING CONTROL
 - SEEDING & MULCHING
 - EROSION CONTROL BLANKET
 - DO NOT DISTURB

Culvert outlet protection?
ATE: ADDRESSED. SEE REVISED GEC PLAN.



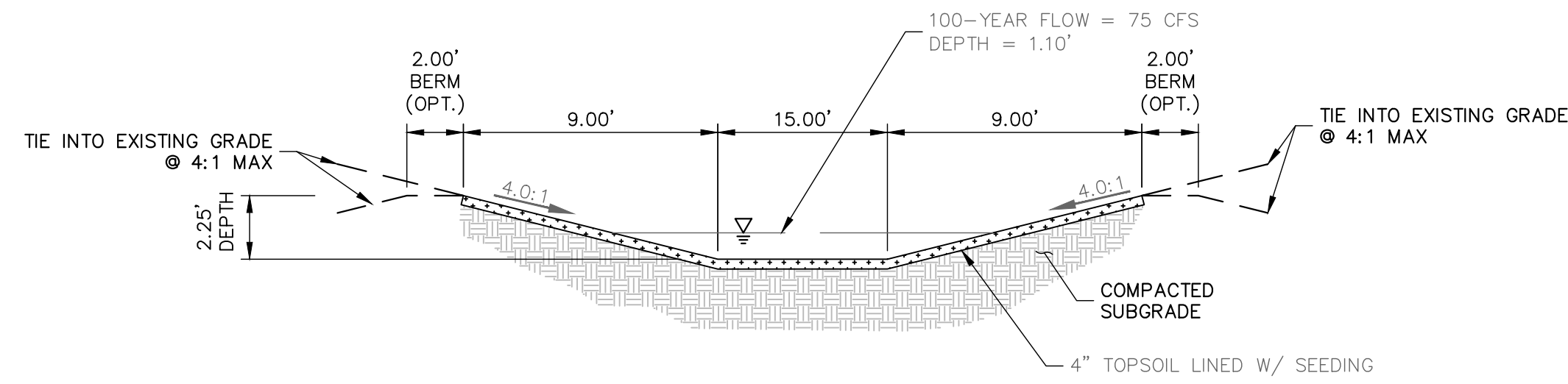
THE LOCATIONS OF EXISTING ABOVE GROUND AND UNDERGROUND UTILITIES ARE SHOWN IN AN APPROXIMATE WAY ONLY. THE CONTRACTOR SHALL DETERMINE THE EXACT LOCATION OF ALL EXISTING UTILITIES BEFORE COMMENCING WORK. THE CONTRACTOR SHALL BE FULLY RESPONSIBLE FOR ANY AND ALL DAMAGES WHICH MIGHT BE CAUSED BY HIS FAILURE TO EXACTLY LOCATE AND PRESERVE ANY AND ALL ABOVE GROUND AND UNDERGROUND UTILITIES.



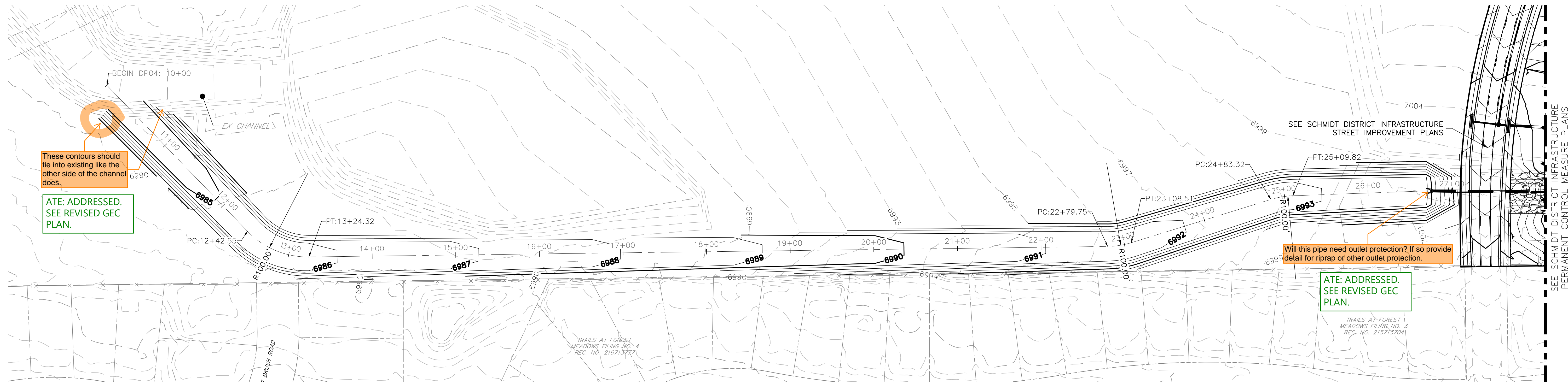
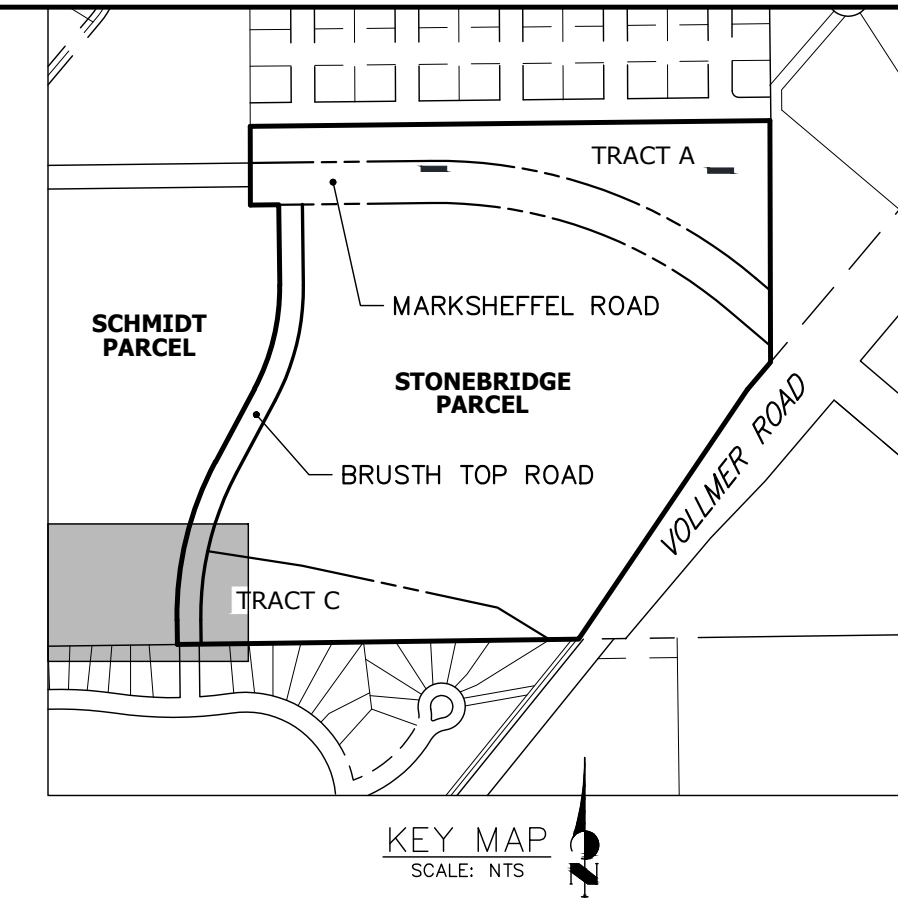
ENGINEER'S STATEMENT
PREPARED UNDER MY DIRECT SUPERVISION AND ON BEHALF OF ALL TERRAIN ENGINEERING
RYAN E. BURNS, P.E.
COLORADO P.E. 54412
FOR AND ON BEHALF OF JR ENGINEERING, LLC
DATE

JOB NO: 24013
LOCATION: CO
SCHMIDT PHASE 1 - DISTRICT INFRASTRUCTURE
FINAL GEC (3)

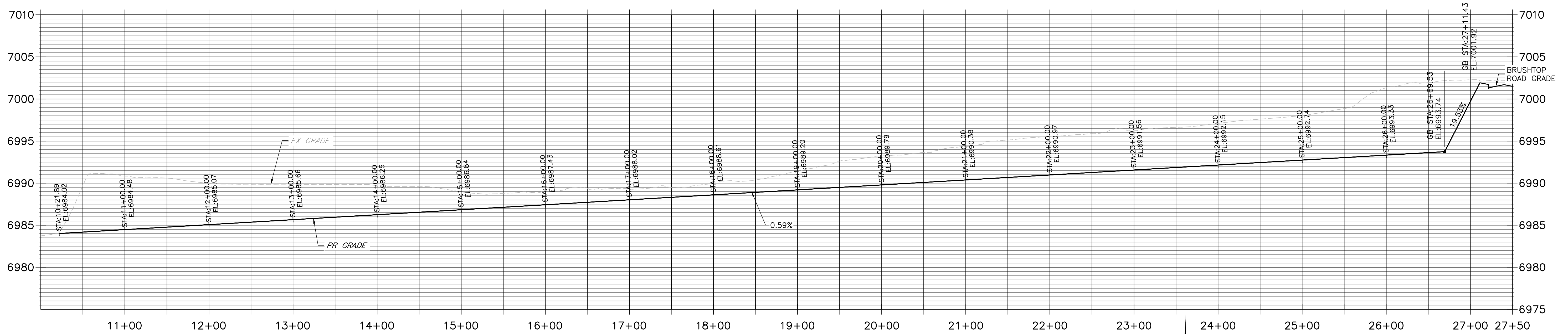
DESIGN: REB
REVIEW: NOJ
DATE: 08/10/2024
H-SCALE: 1" = 60'
V-SCALE: 1" = 6'
SHEET
8 OF 12



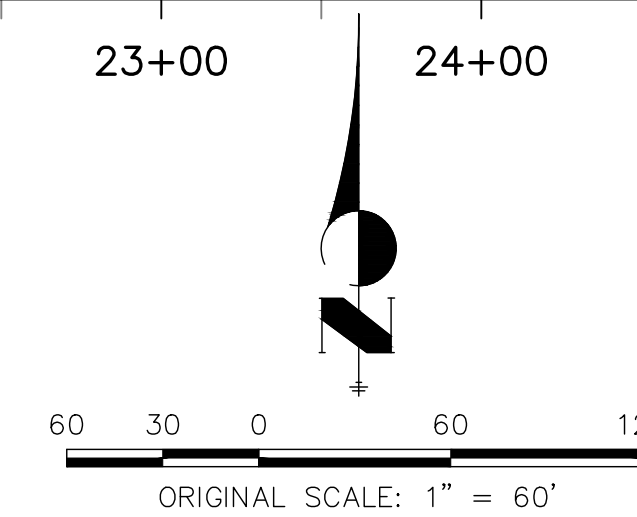
OUTFALL CHANNEL TYPICAL SECTION
SCALE: NTS



DP04
STA 10+00.00 TO 27+50.00



THE LOCATIONS OF EXISTING ABOVE GROUND AND UNDERGROUND UTILITIES ARE SHOWN IN AN APPROXIMATE WAY ONLY. THE CONTRACTOR SHALL DETERMINE THE EXACT LOCATION OF ALL EXISTING UTILITIES BEFORE COMMENCING WORK. THE CONTRACTOR SHALL BE FULLY RESPONSIBLE FOR ANY AND ALL DAMAGES WHICH MIGHT BE CAUSED BY HIS FAILURE TO EXACTLY LOCATE AND PRESERVE ANY AND ALL ABOVE GROUND AND UNDERGROUND UTILITIES.



ENGINEER'S STATEMENT

PREPARED UNDER MY DIRECT SUPERVISION AND ON BEHALF OF ALL TERRAIN ENGINEERING

RYAN E. BURNS, P.E.
COLORADO P.E. 54412
FOR AND ON BEHALF OF JR ENGINEERING, LLC

DATE

DATE	DESCRIPTION

LOCATION: COS

JOB NO: 24013

SCHMIDT PHASE 1 - DISTRICT INFRASTRUCTURE

OUTFALL CHANNEL PLAN & PROFILE

DESIGN: REB
REVIEW: NOJ
DATE: 08/10/2024

H-SCALE: 1" = 60'

V-SCALE: 1" = 6'

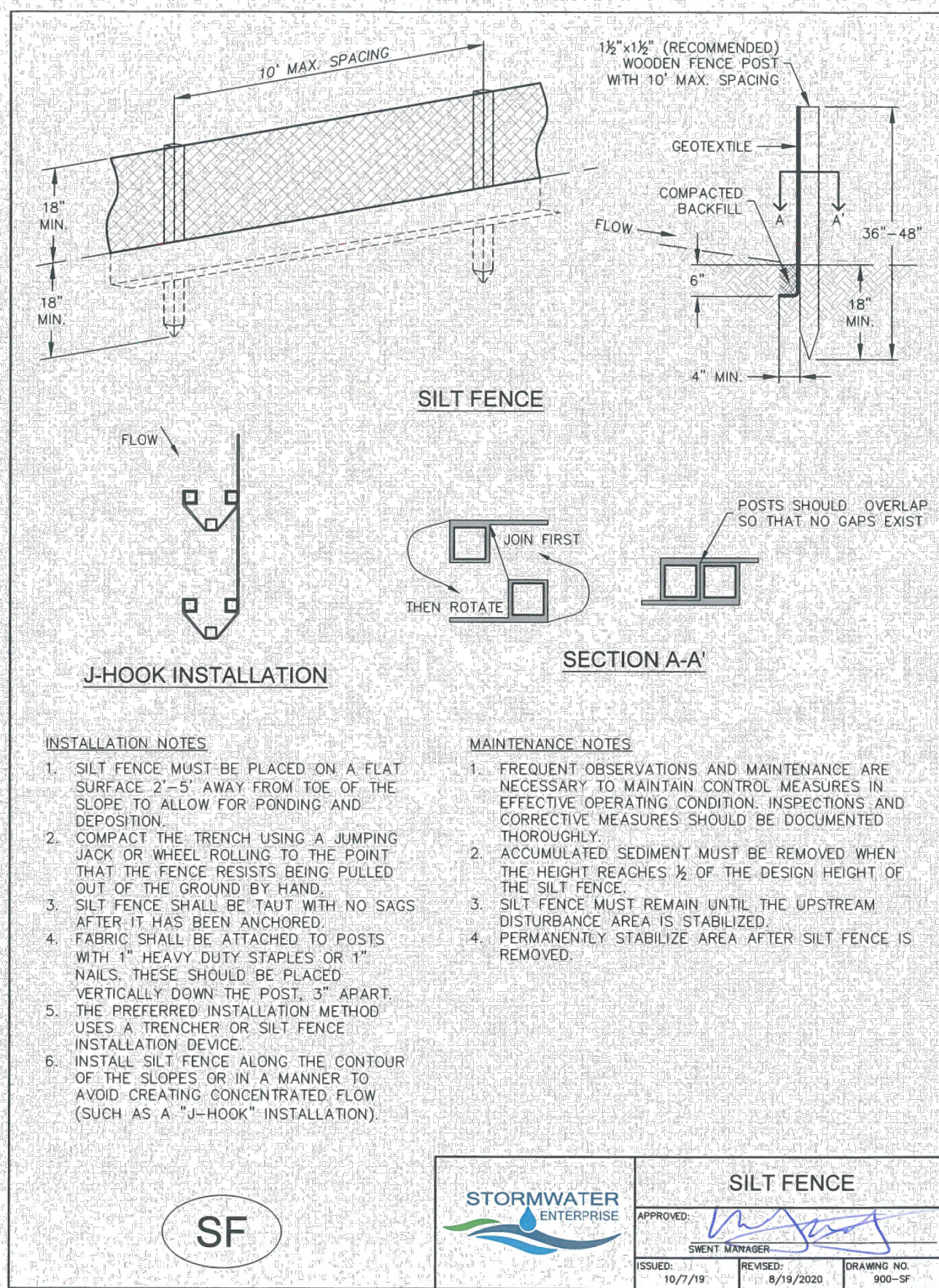
SHEET 9 OF 12

UNTIL SUCH TIME AS THESE DRAWINGS ARE APPROVED BY THE APPROPRIATE REVIEWING AGENCIES, ALL TERRAIN ENGINEERING APPROVES THEIR USE ONLY FOR THE PURPOSES DESIGNATED BY WRITTEN AUTHORIZATION.

PREPARED FOR:
TURKEY CANON QUARRY INC.
20 BOULDER CRESSENT STREET, SUITE 100
COLORADO SPRINGS, CO 80903
ATTN: JIM MORLEY
(719) 491-3024
#####

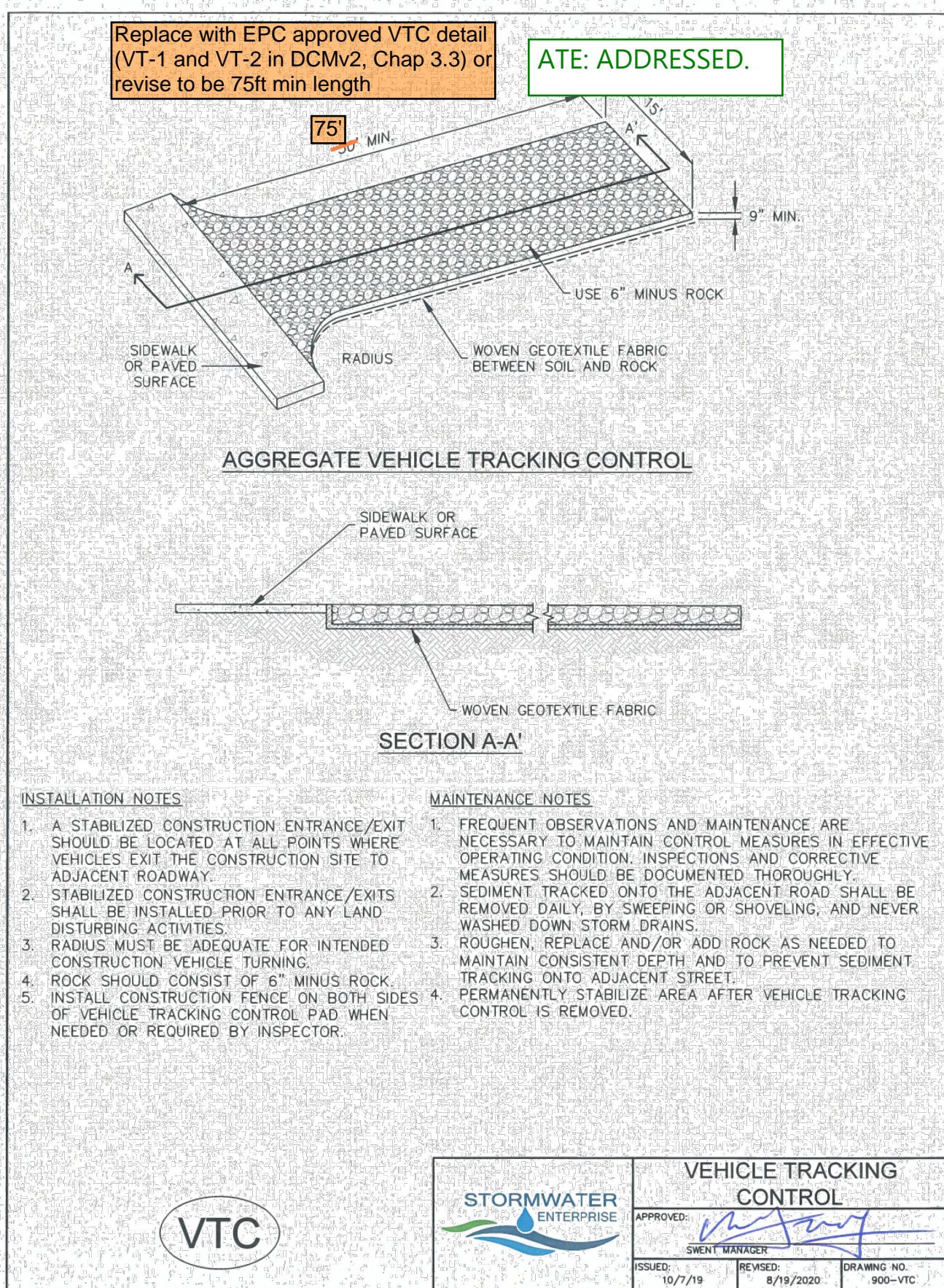


RYAN E. BURNS, P.E.
54412
FOR AND ON BEHALF OF JR ENGINEERING, LLC



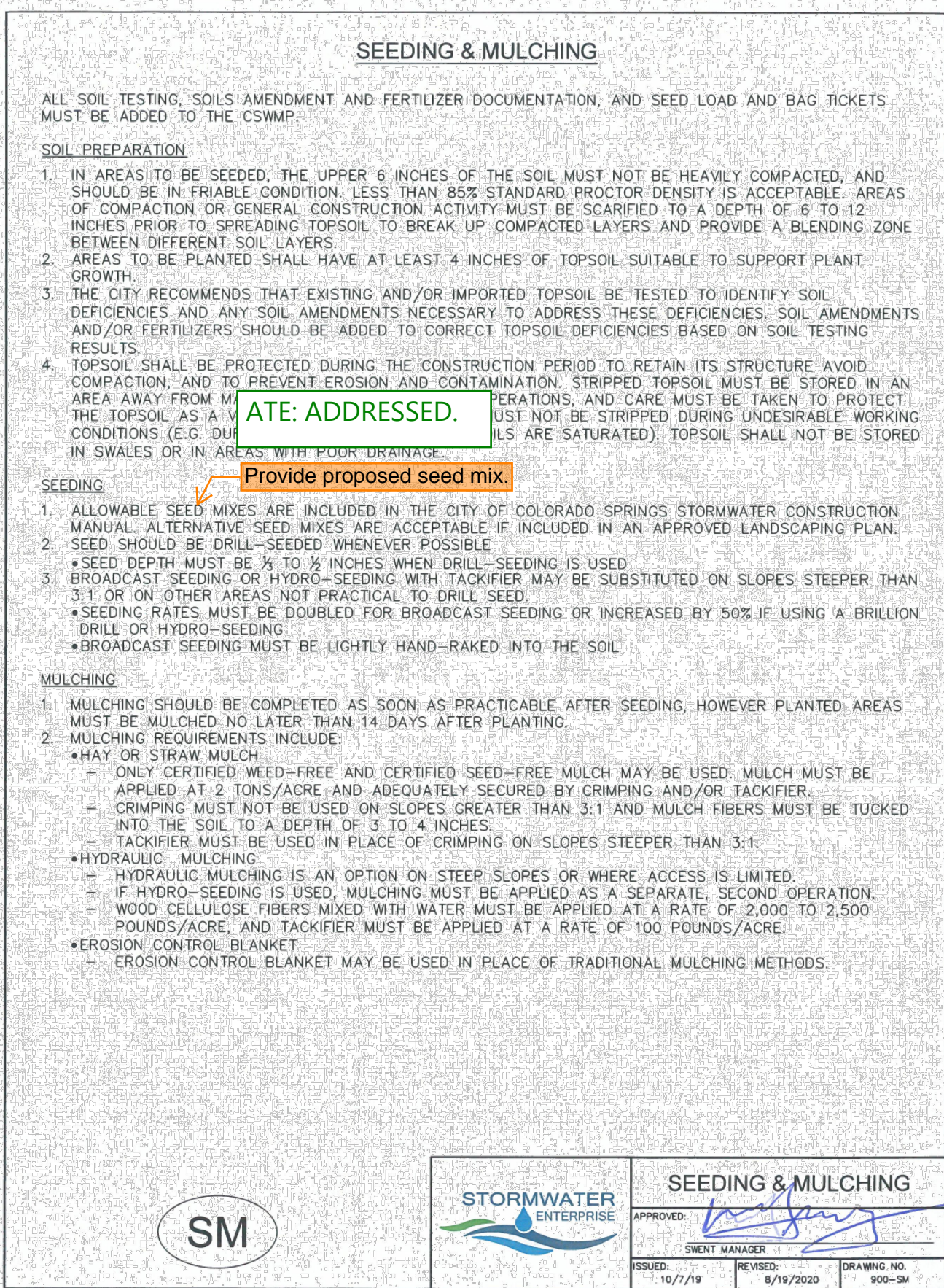
- INSTALLATION NOTES**
- SILT FENCE MUST BE PLACED ON A FLAT SURFACE 2'-5' AWAY FROM TOE OF THE SLOPE TO ALLOW FOR PONDING AND DEPOSITION.
 - COMPACT THE TRENCH USING A JUMPING JACK OR WHEEL ROLLING TO THE POINT THAT THE FENCE RESISTS BEING PULLED OUT OF THE GROUND BY HAND.
 - SILT FENCE SHALL BE TAUT WITH NO SAGS AFTER IT HAS BEEN ANCHORED.
 - FABRIC SHALL BE ATTACHED TO POSTS WITH 1" HEAVY DUTY STAPLES OR 1" NAILS. THESE SHOULD BE PLACED VERTICALLY DOWN THE POST, 3" APART. THE PREFERRED INSTALLATION METHOD USES A TRENCHER OR SILT FENCE INSTALLATION DEVICE.
 - INSTALL SILT FENCE ALONG THE CONTOUR OF THE SLOPES OR IN A MANNER TO AVOID CREATING CONCENTRATED FLOW (SUCH AS A "J-HOOK" INSTALLATION).
- MAINTENANCE NOTES**
- FREQUENT OBSERVATIONS AND MAINTENANCE ARE NECESSARY TO MAINTAIN CONTROL MEASURES IN EFFECTIVE OPERATING CONDITION. INSPECTIONS AND CORRECTIVE MEASURES SHOULD BE DOCUMENTED THOROUGHLY.
 - ACCUMULATED SEDIMENT MUST BE REMOVED WHEN THE HEIGHT REACHES 1/2 OF THE DESIGN HEIGHT OF THE SILT FENCE.
 - SILT FENCE MUST REMAIN UNTIL THE UPSTREAM DISTURBANCE AREA IS STABILIZED.
 - PERMANENTLY STABILIZE AREA AFTER SILT FENCE IS REMOVED.

SILT FENCE	
APPROVED: <i>[Signature]</i>	DATE: 8/19/2024
ISSUED: 10/7/19	DRAWING NO. 900-SF



- INSTALLATION NOTES**
- A STABILIZED CONSTRUCTION ENTRANCE/EXIT SHOULD BE LOCATED AT ALL POINTS WHERE VEHICLES EXIT THE CONSTRUCTION SITE TO ADJACENT ROADWAY.
 - STABILIZED CONSTRUCTION ENTRANCE/EXITS SHALL BE INSTALLED PRIOR TO ANY LAND DISTURBING ACTIVITIES.
 - RADIUS MUST BE ADEQUATE FOR INTENDED CONSTRUCTION VEHICLE TURNING.
 - ROCK SHOULD CONSIST OF 6" MINUS ROCK.
 - INSTALL CONSTRUCTION FENCE ON BOTH SIDES OF VEHICLE TRACKING CONTROL PAD WHEN NEEDED OR REQUIRED BY INSPECTOR.
- MAINTENANCE NOTES**
- FREQUENT OBSERVATIONS AND MAINTENANCE ARE NECESSARY TO MAINTAIN CONTROL MEASURES IN EFFECTIVE OPERATING CONDITION. INSPECTIONS AND CORRECTIVE MEASURES SHOULD BE DOCUMENTED THOROUGHLY.
 - SEDIMENT TRACKED ONTO THE ADJACENT ROAD SHALL BE REMOVED DAILY BY SWEEPING OR SHOVELING, AND NEVER WASHED DOWN STORM DRAINS.
 - ROUGHEN, REPLACE AND/OR ADD ROCK AS NEEDED TO MAINTAIN CONSISTENT DEPTH AND TO PREVENT SEDIMENT TRACKING ONTO ADJACENT STREET.
 - PERMANENTLY STABILIZE AREA AFTER VEHICLE TRACKING CONTROL IS REMOVED.

VEHICLE TRACKING CONTROL	
APPROVED: <i>[Signature]</i>	DATE: 8/19/2024
ISSUED: 10/7/19	DRAWING NO. 900-VTC



- SEEDING & MULCHING**
- ALL SOIL TESTING, SOILS AMENDMENT AND FERTILIZER DOCUMENTATION, AND SEED LOAD AND BAG TICKETS MUST BE ADDED TO THE CSWMP.
- SOIL PREPARATION**
- IN AREAS TO BE SEEDED, THE UPPER 6 INCHES OF THE SOIL MUST NOT BE HEAVILY COMPACTED, AND SHOULD BE IN FRIABLE CONDITION. LESS THAN 85% STANDARD PROCTOR DENSITY IS ACCEPTABLE. AREAS OF COMPACTION OR GENERAL CONSTRUCTION ACTIVITY MUST BE SCARIFIED TO A DEPTH OF 6 TO 12 INCHES PRIOR TO SPREADING TOPSOIL TO BREAK UP COMPACTED LAYERS AND PROVIDE A BLENDING ZONE BETWEEN DIFFERENT SOIL LAYERS.
 - AREAS TO BE PLANTED SHALL HAVE AT LEAST 4 INCHES OF TOPSOIL SUITABLE TO SUPPORT PLANT GROWTH.
 - THE CITY RECOMMENDS THAT EXISTING AND/OR IMPORTED TOPSOIL BE TESTED TO IDENTIFY SOIL DEFICIENCIES AND ANY SOIL AMENDMENTS NECESSARY TO ADDRESS THESE DEFICIENCIES. SOIL AMENDMENTS AND/OR FERTILIZERS SHOULD BE ADDED TO CORRECT TOPSOIL DEFICIENCIES BASED ON SOIL TESTING RESULTS.
 - TOPSOIL SHALL BE PROTECTED DURING THE CONSTRUCTION PERIOD TO RETAIN ITS STRUCTURE. AVOID COMPACTION AND TO PREVENT EROSION AND CONTAMINATION. STRIPPED TOPSOIL MUST BE STORED IN AN AREA AWAY FROM MATERIAL OPERATIONS, AND CARE MUST BE TAKEN TO PROTECT THE TOPSOIL AS A RESULT OF THESE OPERATIONS. TOPSOIL MUST NOT BE STRIPPED DURING UNDESIRABLE WORKING CONDITIONS (E.G. DUE TO WIND OR IN AREAS WITH POOR DRAINAGE).
- SEEDING**
- ALLOWABLE SEED MIXES ARE INCLUDED IN THE CITY OF COLORADO SPRINGS STORMWATER CONSTRUCTION MANUAL. ALTERNATIVE SEED MIXES ARE ACCEPTABLE IF INCLUDED IN AN APPROVED LANDSCAPING PLAN.
 - SEED SHOULD BE DRILL-SEEDED WHENEVER POSSIBLE.
 - SEED DEPTH MUST BE 1/4 TO 1/2 INCHES WHEN DRILL-SEEDED IS USED.
 - BROADCAST SEEDING OR HYDRO-SEEDED WITH TACKIFIER MAY BE SUBSTITUTED ON SLOPES STEEPER THAN 3:1 OR ON OTHER AREAS NOT PRACTICAL TO DRILL SEED.
 - SEEDING RATES MUST BE DOUBLED FOR BROADCAST SEEDING OR INCREASED BY 50% IF USING A BRILLION DRILL OR HYDRO-SEEDED.
 - BROADCAST SEEDING MUST BE LIGHTLY HAND-RAKED INTO THE SOIL.
- MULCHING**
- MULCHING SHOULD BE COMPLETED AS SOON AS PRACTICABLE AFTER SEEDING, HOWEVER PLANTED AREAS MUST BE MULCHED NO LATER THAN 14 DAYS AFTER PLANTING.
 - MULCHING REQUIREMENTS INCLUDE:
 - HAY OR STRAW MULCH: ONLY CERTIFIED WEED-FREE AND CERTIFIED SEED-FREE MULCH MAY BE USED. MULCH MUST BE APPLIED AT 2 TONS/ACRE AND ADEQUATELY SECURED BY CRIMPING AND/OR TACKIFIER. CRIMPING MUST NOT BE USED ON SLOPES GREATER THAN 3:1 AND MULCH FIBERS MUST BE TUCKED INTO THE SOIL TO A DEPTH OF 3 TO 4 INCHES.
 - HYDRAULIC MULCHING: TACKIFIER MUST BE USED IN PLACE OF CRIMPING ON SLOPES STEEPER THAN 3:1. HYDRAULIC MULCHING IS AN OPTION ON STEEP SLOPES OR WHERE ACCESS IS LIMITED. IF HYDRO-SEEDED IS USED, MULCHING MUST BE APPLIED AS A SEPARATE, SECOND OPERATION. WOOD CELLULOSE FIBERS MIXED WITH WATER MUST BE APPLIED AT A RATE OF 2,000 TO 2,500 POUNDS/ACRE, AND TACKIFIER MUST BE APPLIED AT A RATE OF 100 POUNDS/ACRE.
 - EROSION CONTROL BLANKET: EROSION CONTROL BLANKET MAY BE USED IN PLACE OF TRADITIONAL MULCHING METHODS.

SEEDING & MULCHING	
APPROVED: <i>[Signature]</i>	DATE: 8/19/2024
ISSUED: 10/7/19	DRAWING NO. 900-SM

GEC Checklist Item 2/SWMP Checklist Item 20 - Provide details for: Culvert inlet/outlet protection, stabilized staging area, and erosion control blanket.

ATE: ADDRESSED.



PREPARED FOR:
TURKEY CANON QUARRY INC.
20 BOULDER CRESCENT STREET, SUITE 100
COLORADO SPRINGS, CO 80903
ATTN: JIM MORLEY
(719) 491-3024
###

UNTIL SUCH TIME AS THESE DRAWINGS ARE APPROVED BY THE APPROPRIATE REVIEWING AGENCIES, ALL TERRAIN ENGINEERING APPROVES THEIR USE ONLY FOR THE PURPOSES DESIGNATED BY WRITTEN AUTHORIZATION.

DATE	
REV DESCRIPTION	

SCHMIDT PHASE 1 - DISTRICT INFRASTRUCTURE
GEC DETAILS

ENGINEER'S STATEMENT
PREPARED UNDER MY DIRECT SUPERVISION AND ON BEHALF OF ALL TERRAIN ENGINEERING

DESIGN: REB
REVIEW: NOJ
DATE: 08/10/2024
H-SCALE: N/A
V-SCALE: N/A
SHEET 11 OF 12

RYAN E. BURNS, P.E.
COLORADO P.E. 54412
FOR AND ON BEHALF OF JR ENGINEERING, LLC

RYAN E. BURNS, P.E.
550 5TH AVE. S.
DENVER, CO 80202
www.jr-engineering.com