

- GEC LEGEND:**
- CULVERT PROTECTION
  - CONCRETE WASHOUT AREA
  - INLET PROTECTION
  - EX FLOW DIRECTION  
PR FLOW DIRECTION
  - SEDIMENT CONTROL LOG
  - DIVERSION DITCH
  - SILT FENCE
  - LIMITS OF DISTURBANCE/  
CONSTRUCTION BOUNDARY
  - STABILIZED STAGING AREA
  - STOCKPILE PROTECTION
  - VEHICLE TRACKING CONTROL
  - SEEDING & MULCHING
  - EROSION CONTROL BLANKET
  - DO NOT DISTURB

- GRADING & EROSION CONTROL PLAN NOTES**
- EXISTING VEGETATION CONSISTS OF PRAIRIES, GRASSES AND SCATTERED COTTONWOODS.
  - NO CONCRETE OR ASPHALT BATCH PLANTS ARE ANTICIPATED.

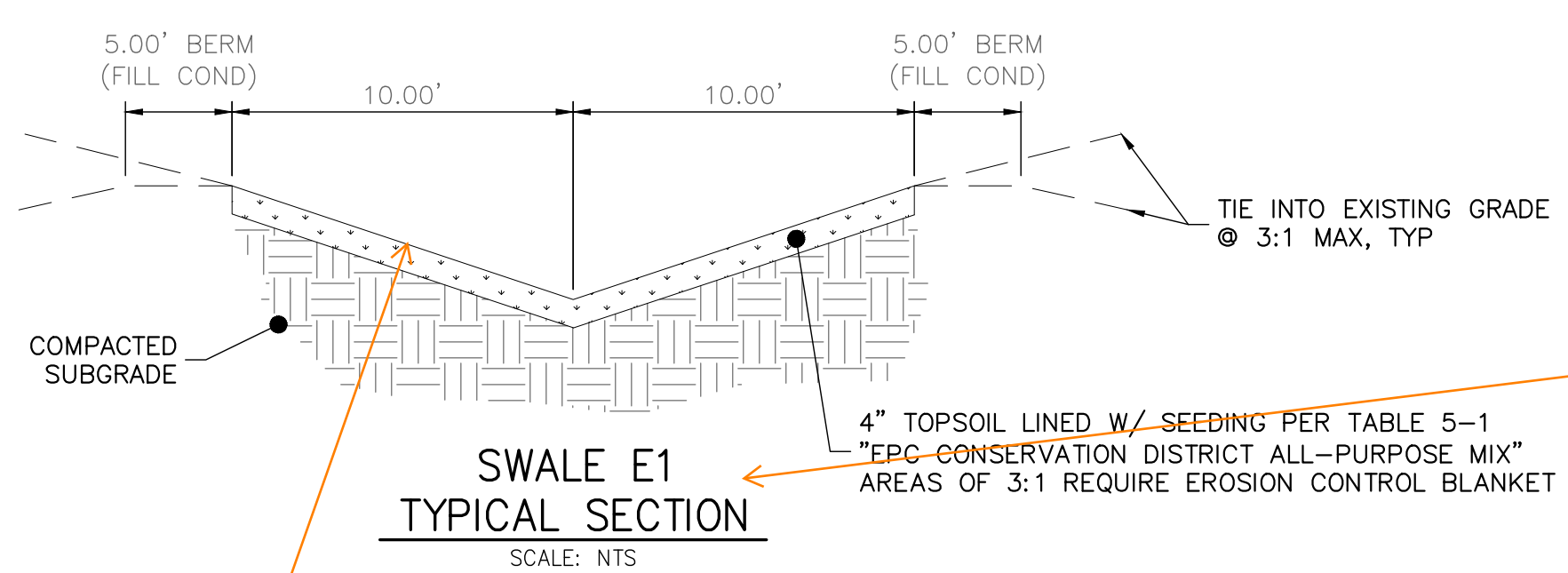


PREPARED FOR:  
TURKEY CANON QUARRY INC.  
20 BOULDER CRESCENT ST, STE 100  
COLORADO SPRINGS, CO 80903  
ATTN: JIM MORLEY  
(719) 491-3024  
JIMORLEY.MORLEYCOS@GMAIL.COM

UNTIL SUCH TIME AS THESE  
DRAWINGS ARE APPROVED BY THE  
APPROPRIATE REVIEWING  
AGENCIES, ALL TERRAIN  
ENGINEERING APPROVES THEIR  
USE ONLY FOR THE PURPOSES  
DESIGNATED BY WRITTEN  
AUTHORIZATION.

DATE	DESCRIPTION

MARKSHEFFEL ROAD - SEGMENT M3  
INITIAL-INTERIM GEC



Provide side slopes and min depth for constructibility

Is this supposed to be E1 as well? Label if so

Since these plans are covering initial and interim, clarify what is initial vs interim.



ORIGINAL SCALE: 1" = 60'

THE LOCATIONS OF EXISTING ABOVE GROUND AND UNDERGROUND UTILITIES ARE SHOWN IN AN APPROXIMATE WAY ONLY. THE CONTRACTOR SHALL DETERMINE THE EXACT LOCATION OF ALL EXISTING UTILITIES BEFORE COMMENCING WORK. THE CONTRACTOR SHALL BE FULLY RESPONSIBLE FOR ANY AND ALL DAMAGES WHICH MIGHT BE CAUSED BY HIS FAILURE TO EXACTLY LOCATE AND PRESERVE ANY AND ALL ABOVE GROUND AND UNDERGROUND UTILITIES.

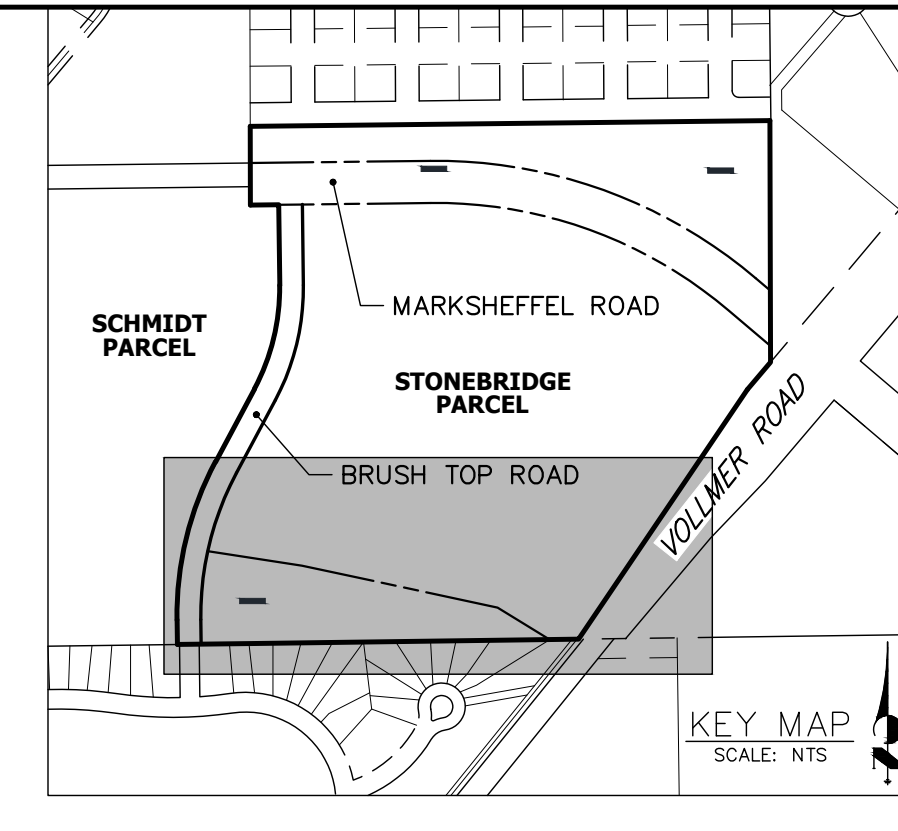
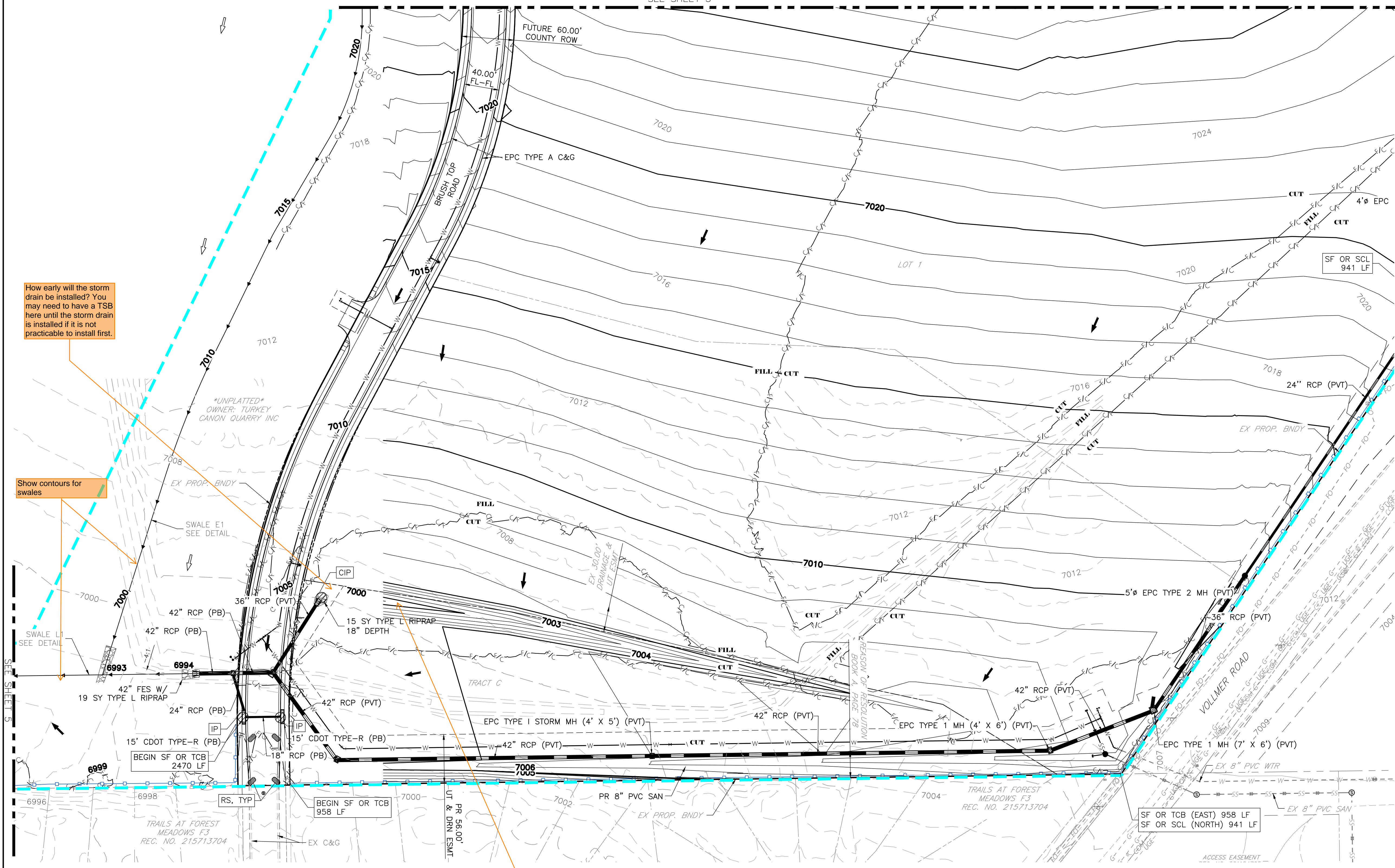
**ENGINEER'S STATEMENT**  
PREPARED UNDER MY DIRECT SUPERVISION AND ON BEHALF OF ALL TERRAIN ENGINEERING

DESIGN: REB  
REVIEW: NOJ  
DATE: 04/27/2026  
H-SCALE: 1" = 50'  
V-SCALE: 1" = 5'

RYAN E. BURNS, P.E.  
COLORADO P.E. 54412  
FOR AND ON BEHALF OF ALL TERRAIN ENGINEERING LLC

SHEET  
3 OF 13

SEE SHEET 3



- GEC LEGEND:**
- CULVERT PROTECTION
  - CONCRETE WASHOUT AREA
  - INLET PROTECTION
  - EX FLOW DIRECTION  
PR FLOW DIRECTION
  - SEDIMENT CONTROL LOG
  - DIVERSION DITCH
  - SILT FENCE
  - LIMITS OF DISTURBANCE/  
CONSTRUCTION BOUNDARY
  - STABILIZED STAGING AREA
  - STOCKPILE PROTECTION
  - VEHICLE TRACKING CONTROL
  - SEEDING & MULCHING
  - EROSION CONTROL BLANKET
  - DO NOT DISTURB



PREPARED FOR:  
TURKEY CANON QUARRY INC.  
20 BOULDER CRESCENT ST, STE 100  
COLORADO SPRINGS, CO 80903  
ATTN: JIM MORLEY  
(719) 491-3024  
JMORLEY.MORLEYCOS@GMAIL.COM

UNTIL SUCH TIME AS THESE  
DRAWINGS ARE APPROVED BY THE  
APPROPRIATE REVIEWING  
AGENCIES, ALL TERRAIN  
ENGINEERING APPROVES THEIR  
USE ONLY FOR THE PURPOSES  
DESIGNATED BY WRITTEN  
AUTHORIZATION.

DATE	DESCRIPTION

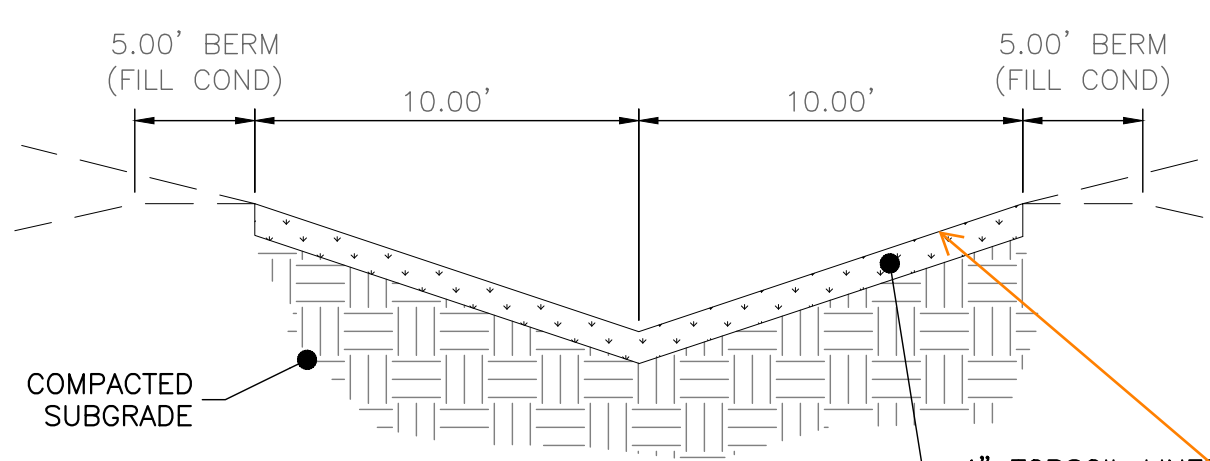
MARKSHEFFEL ROAD - SEGMENT M3  
INITIAL-INTERM GEC (2)

How early will the storm drain be installed? You may need to have a TSB here until the storm drain is installed if it is not practicable to install first.

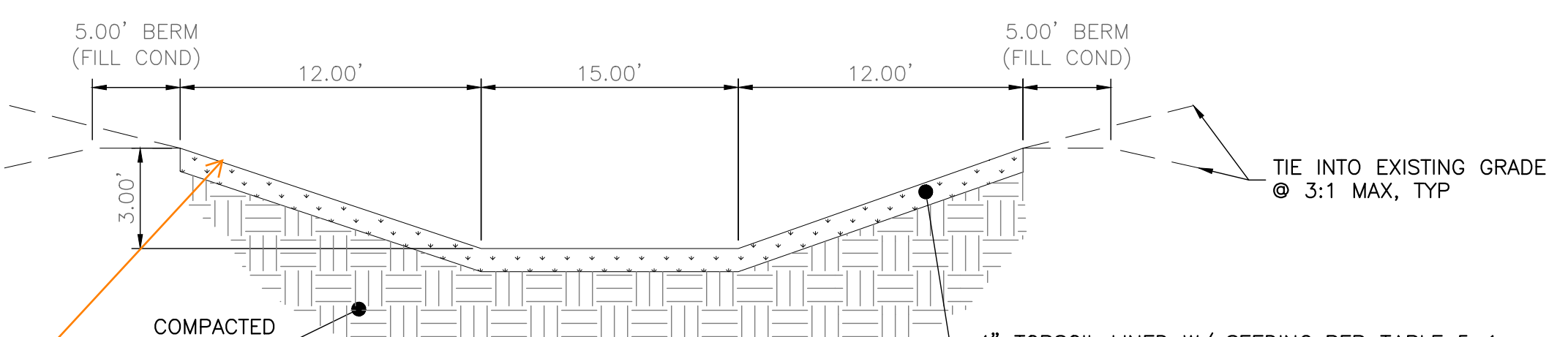
Show contours for swales

How will these contours tie in?

Provide side slopes and min depth for constructibility



**SWALE E1  
TYPICAL SECTION**  
SCALE: NTS



**SWALE L1  
TYPICAL SECTION**  
SCALE: NTS



Know what's below.  
Call before you dig.  
ORIGINAL SCALE: 1" = 60'

THE LOCATIONS OF EXISTING ABOVE GROUND AND UNDERGROUND UTILITIES ARE SHOWN IN AN APPROXIMATE WAY ONLY. THE CONTRACTOR SHALL DETERMINE THE EXACT LOCATION OF ALL EXISTING UTILITIES BEFORE COMMENCING WORK. THE CONTRACTOR SHALL BE FULLY RESPONSIBLE FOR ANY AND ALL DAMAGES WHICH MIGHT BE CAUSED BY HIS FAILURE TO EXACTLY LOCATE AND PRESERVE ANY AND ALL ABOVE GROUND AND UNDERGROUND UTILITIES.

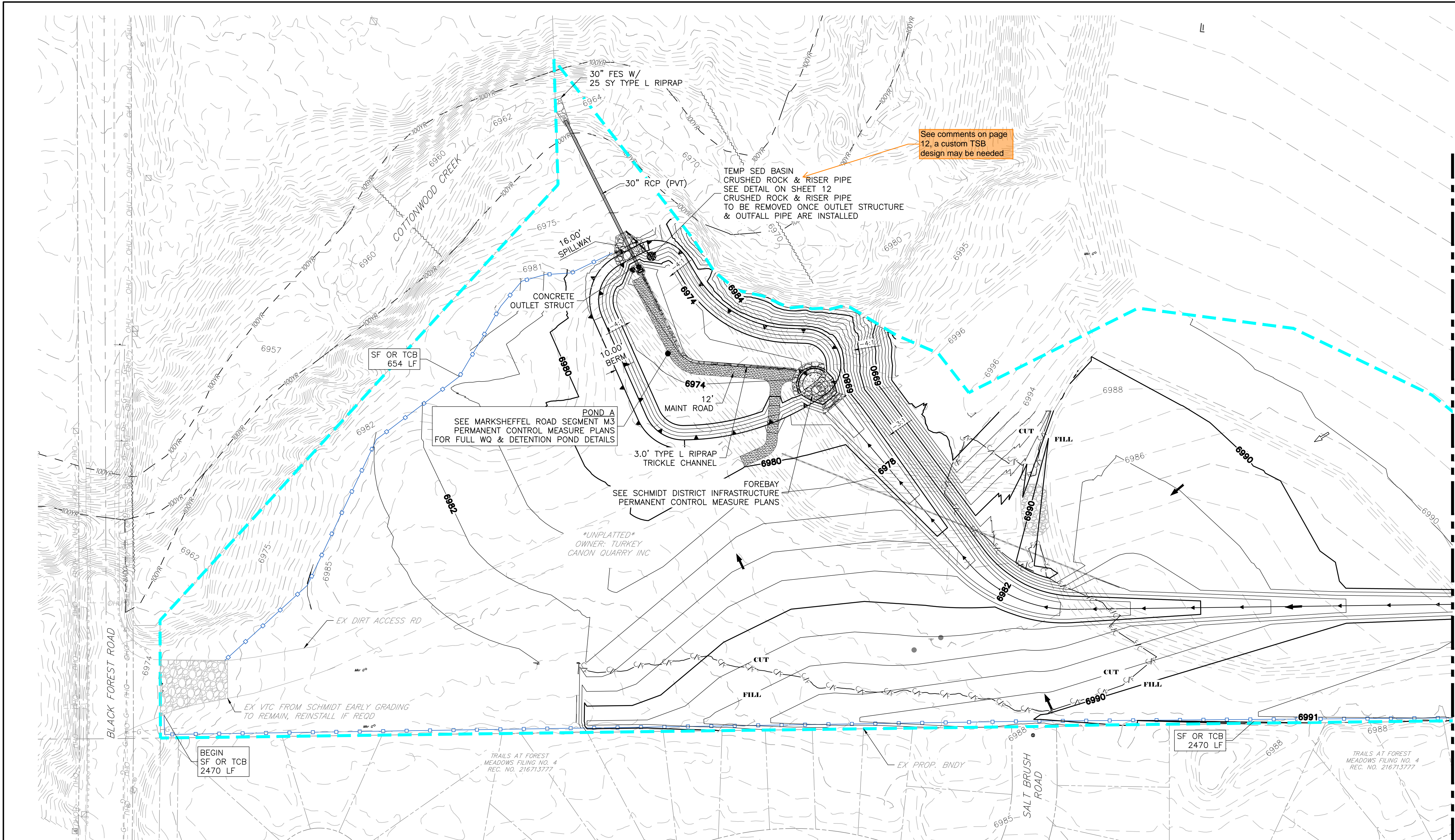
**ENGINEER'S STATEMENT**  
PREPARED UNDER MY DIRECT SUPERVISION AND ON BEHALF OF ALL TERRAIN ENGINEERING

RYAN E. BURNS, P.E.  
COLORADO P.E. 54412  
FOR AND ON BEHALF OF ALL TERRAIN ENGINEERING LLC

DATE

DESIGN: REB  
REVIEW: NOJ  
DATE: 04/27/2026  
H-SCALE: 1" = 60'  
V-SCALE: 1" = 6'  
SHEET  
4 OF 13



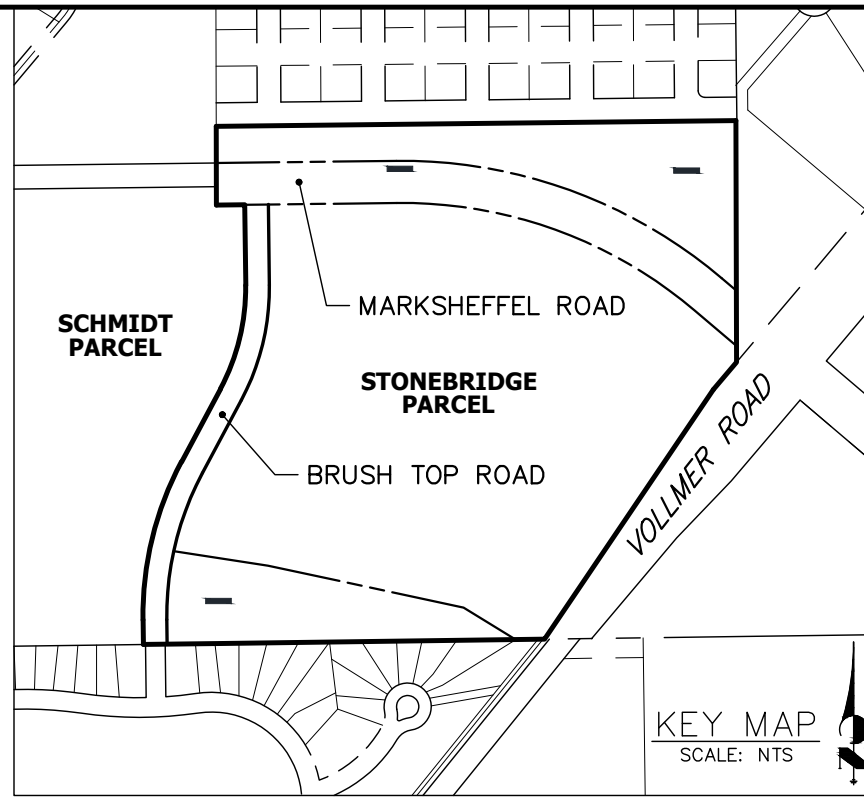


See comments on page 12, a custom TSB design may be needed

POND A  
SEE MARKSHEFFEL ROAD SEGMENT M3 PERMANENT CONTROL MEASURE PLANS FOR FULL WQ & DETENTION POND DETAILS

\*UNPLATTED\*  
OWNER: TURKEY CANON QUARRY INC

TRAILS AT FOREST MEADOWS FILING NO. 4 REC. NO. 216713777



- GEC LEGEND:**
- CULVERT PROTECTION
  - CONCRETE WASHOUT AREA
  - INLET PROTECTION
  - EX FLOW DIRECTION  
PR FLOW DIRECTION
  - SEDIMENT CONTROL LOG
  - DIVERSION DITCH
  - SILT FENCE
  - LIMITS OF DISTURBANCE/  
CONSTRUCTION BOUNDARY
  - STABILIZED STAGING AREA
  - STOCKPILE PROTECTION
  - VEHICLE TRACKING CONTROL
  - SEEDING & MULCHING
  - EROSION CONTROL BLANKET
  - DO NOT DISTURB



PREPARED FOR:  
TURKEY CANON QUARRY INC.  
20 BOULDER CRESCENT ST, STE 100  
COLORADO SPRINGS, CO 80903  
ATTN: JIM MORLEY  
(719) 491-3024  
JMORLEY.MORLEYCOS@GMAIL.COM

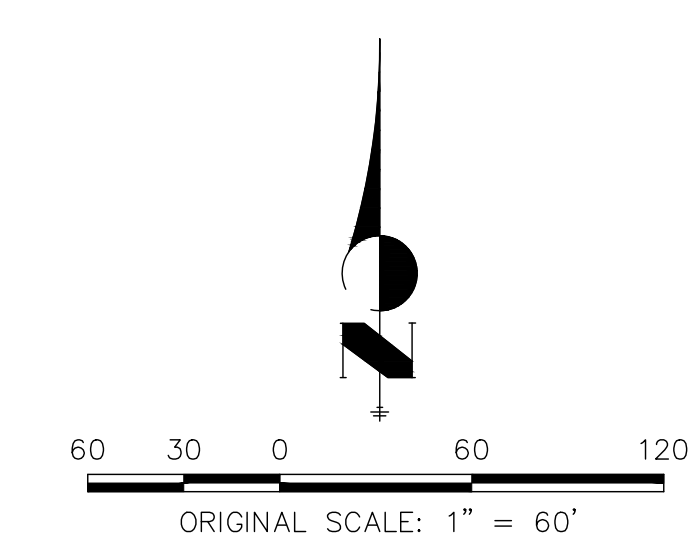
UNTIL SUCH TIME AS THESE DRAWINGS ARE APPROVED BY THE APPROPRIATE REVIEWING AGENCIES, ALL TERRAIN ENGINEERING APPROVES THEIR USE ONLY FOR THE PURPOSES DESIGNATED BY WRITTEN AUTHORIZATION.

JOB NO.	LOCATION	DATE
24013	EPC	
REV	DESCRIPTION	

MARKSHEFFEL ROAD - SEGMENT M3

INITIAL-INTERIM GEC (4)

THE LOCATIONS OF EXISTING ABOVE GROUND AND UNDERGROUND UTILITIES ARE SHOWN IN AN APPROXIMATE WAY ONLY. THE CONTRACTOR SHALL DETERMINE THE EXACT LOCATION OF ALL EXISTING UTILITIES BEFORE COMMENCING WORK. THE CONTRACTOR SHALL BE FULLY RESPONSIBLE FOR ANY AND ALL DAMAGES WHICH MAY BE CAUSED BY HIS FAILURE TO EXACTLY LOCATE AND PRESERVE ANY AND ALL ABOVE GROUND AND UNDERGROUND UTILITIES.



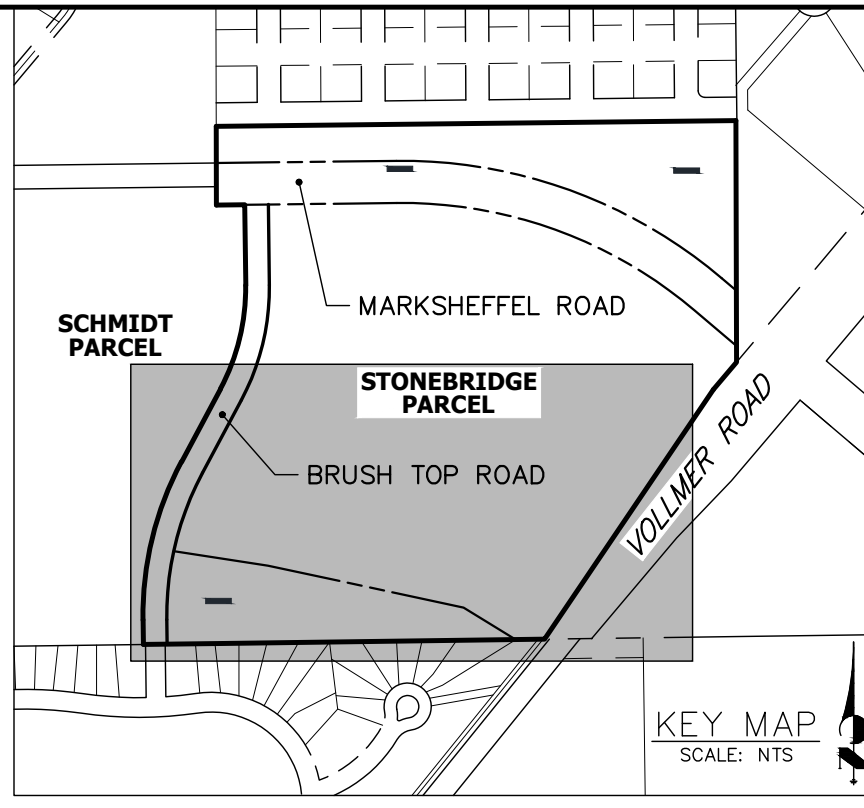
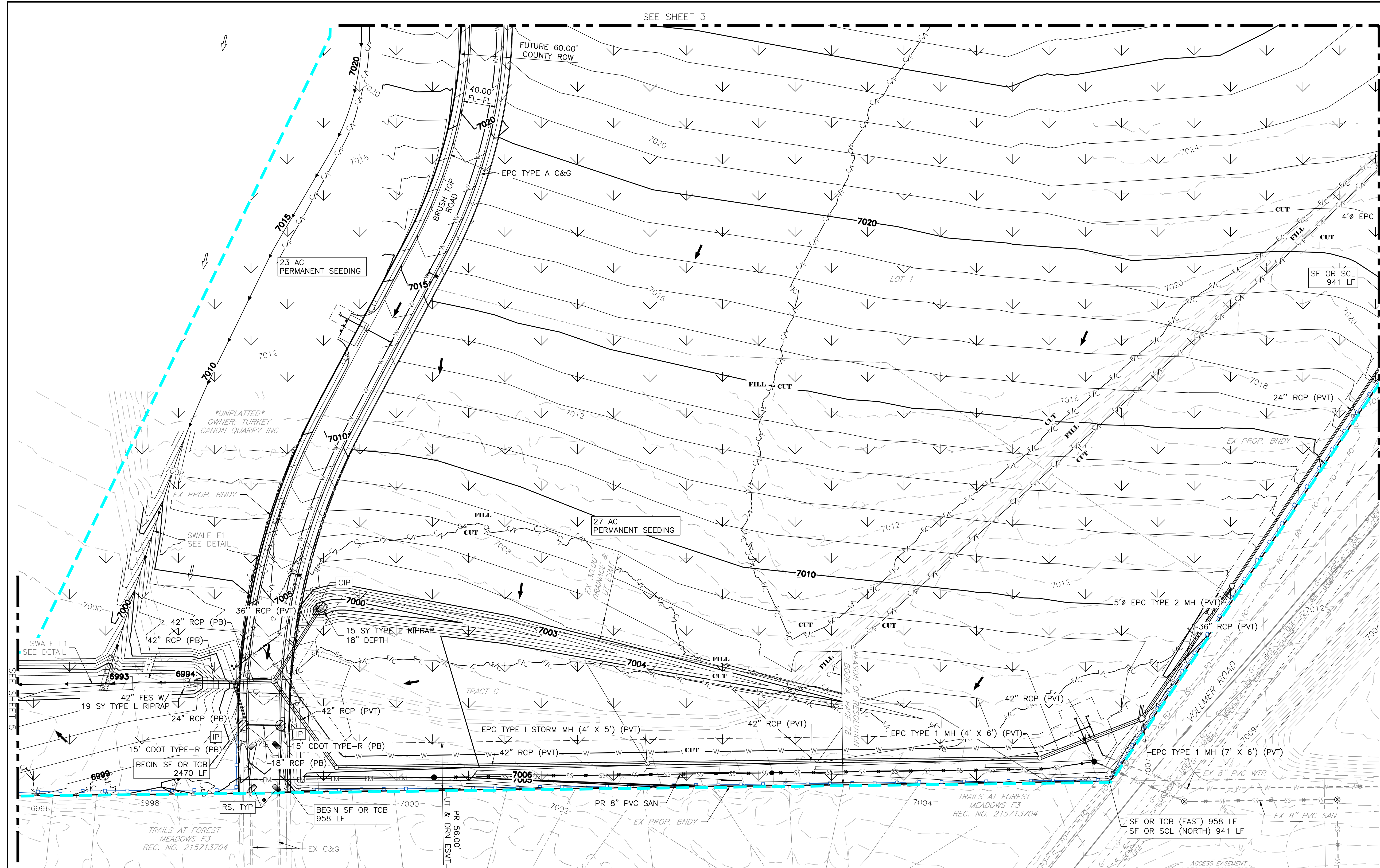
**ENGINEER'S STATEMENT**  
PREPARED UNDER MY DIRECT SUPERVISION AND ON BEHALF OF ALL TERRAIN ENGINEERING

DESIGN: REB  
REVIEW: NOJ  
DATE: 04/27/2026  
H-SCALE: 1" = 60'  
V-SCALE: 1" = 6'

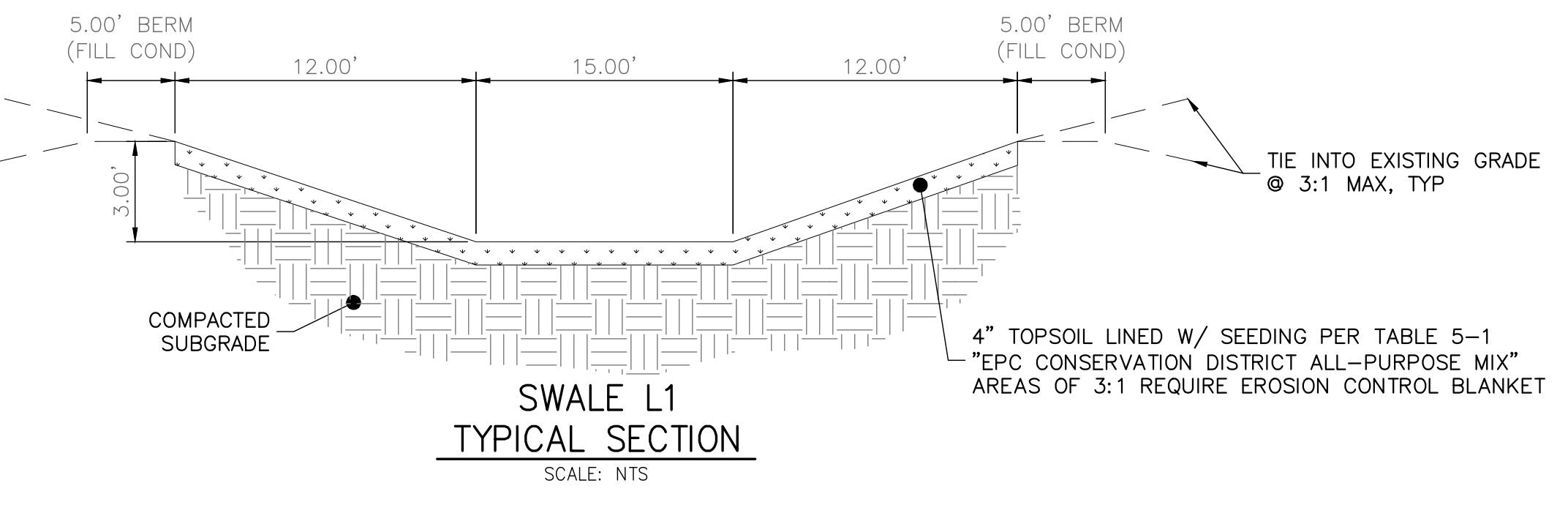
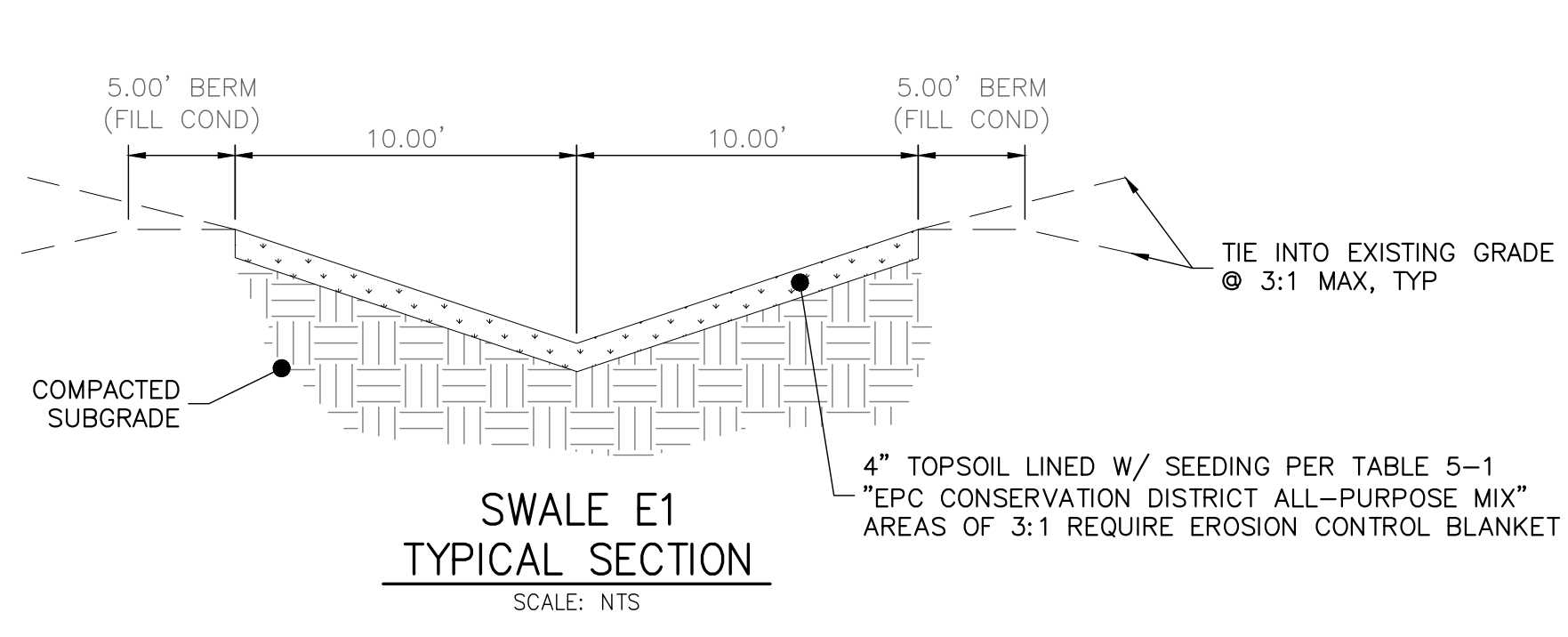
RYAN E. BURNS, P.E.  
COLORADO P.E. 54412  
FOR AND ON BEHALF OF ALL TERRAIN ENGINEERING LLC

DATE

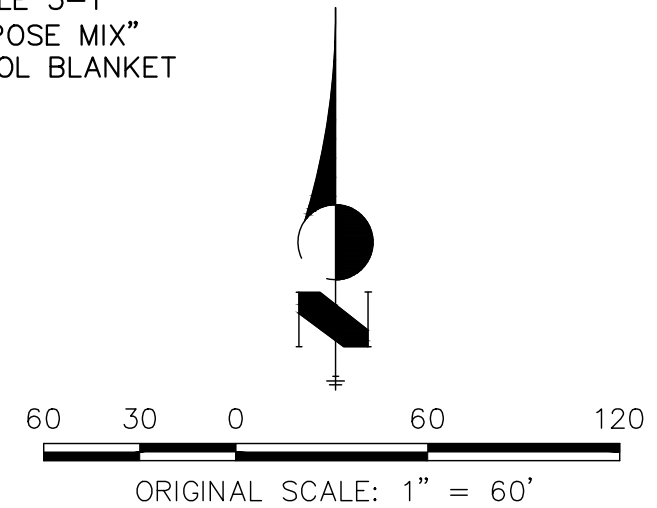




- GEC LEGEND:**
- CULVERT PROTECTION
  - CONCRETE WASHOUT AREA
  - INLET PROTECTION
  - EX FLOW DIRECTION  
PR FLOW DIRECTION
  - SEDIMENT CONTROL LOG
  - DIVERSION DITCH
  - SILT FENCE
  - LIMITS OF DISTURBANCE/  
CONSTRUCTION BOUNDARY
  - STABILIZED STAGING AREA
  - STOCKPILE PROTECTION
  - VEHICLE TRACKING CONTROL
  - SEEDING & MULCHING
  - EROSION CONTROL BLANKET
  - DO NOT DISTURB



THE LOCATIONS OF EXISTING ABOVE GROUND AND UNDERGROUND UTILITIES ARE SHOWN IN AN APPROXIMATE WAY ONLY. THE CONTRACTOR SHALL DETERMINE THE EXACT LOCATION OF ALL EXISTING UTILITIES BEFORE COMMENCING WORK. THE CONTRACTOR SHALL BE FULLY RESPONSIBLE FOR ANY AND ALL DAMAGES WHICH MIGHT BE CAUSED BY HIS FAILURE TO EXACTLY LOCATE AND PRESERVE ANY AND ALL ABOVE GROUND AND UNDERGROUND UTILITIES.



**ENGINEER'S STATEMENT**  
 PREPARED UNDER MY DIRECT SUPERVISION AND ON BEHALF OF ALL TERRAIN ENGINEERING  
 RYAN E. BURNS, P.E.  
 COLORADO P.E. 54412  
 FOR AND ON BEHALF OF ALL TERRAIN ENGINEERING LLC

ALL TERRAIN ENGINEERING

PREPARED FOR:  
 TURKEY CANON QUARRY INC.  
 10 BOULDER CRESCENT ST, STE 100  
 COLORADO SPRINGS, CO 80903  
 ATTN: JIM MORLEY  
 (719) 491-3024  
 MORLEY.MORLEY@GMAIL.COM

UNLESS OTHERWISE NOTED, ALL DRAWINGS ARE APPROVED BY THE APPROPRIATE REVIEWING AGENCIES, ALL TERRAIN ENGINEERING APPROVES THEIR USE ONLY FOR THE PURPOSES DESIGNATED BY WRITTEN AUTHORIZATION.

DATE	DESCRIPTION

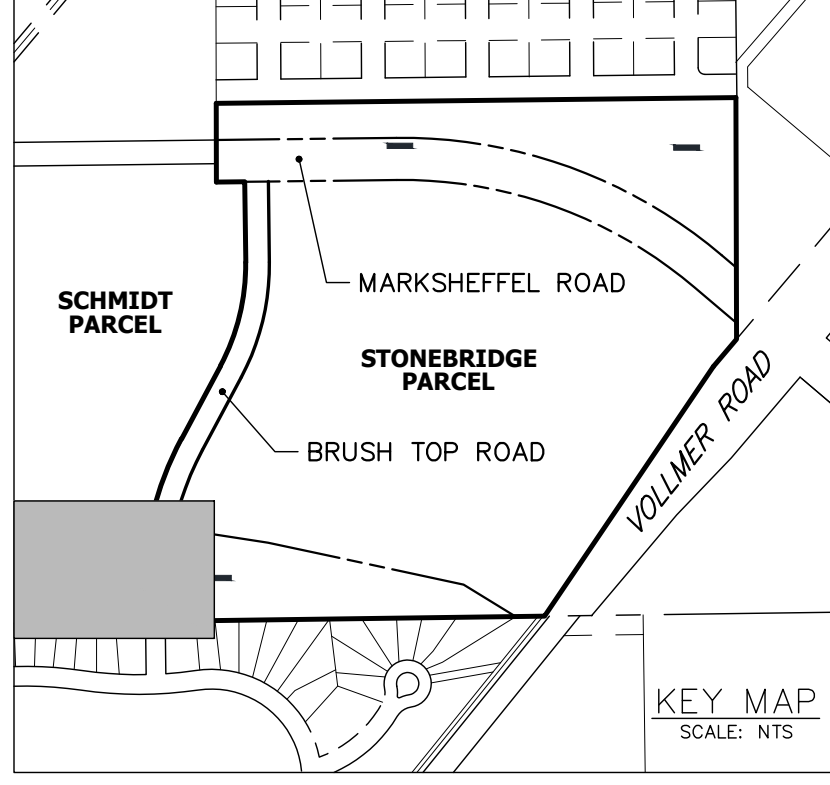
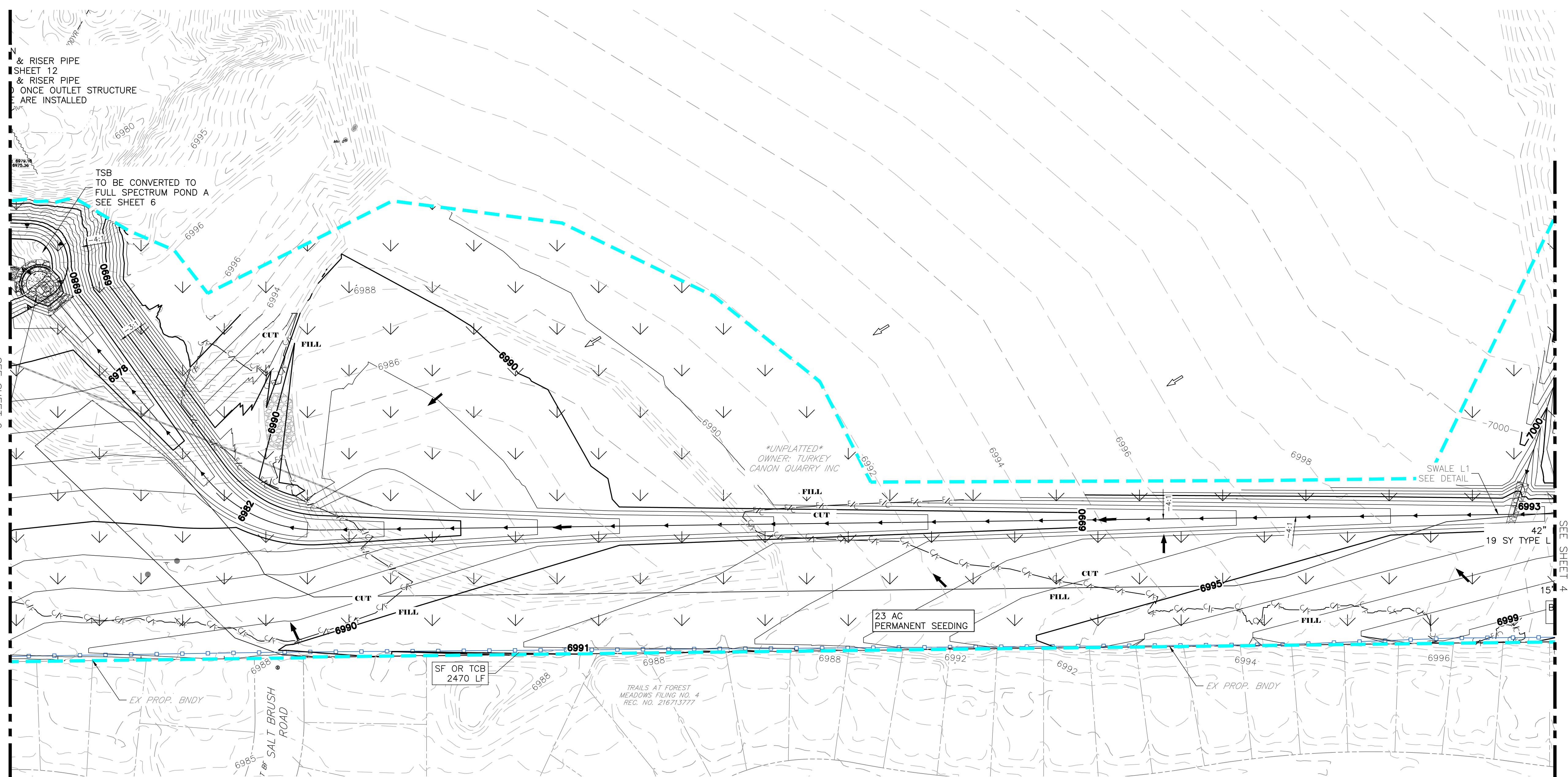
JOB NO: 24013 LOCATION: EPC

MARKSHEFFEL ROAD - SEGMENT M3

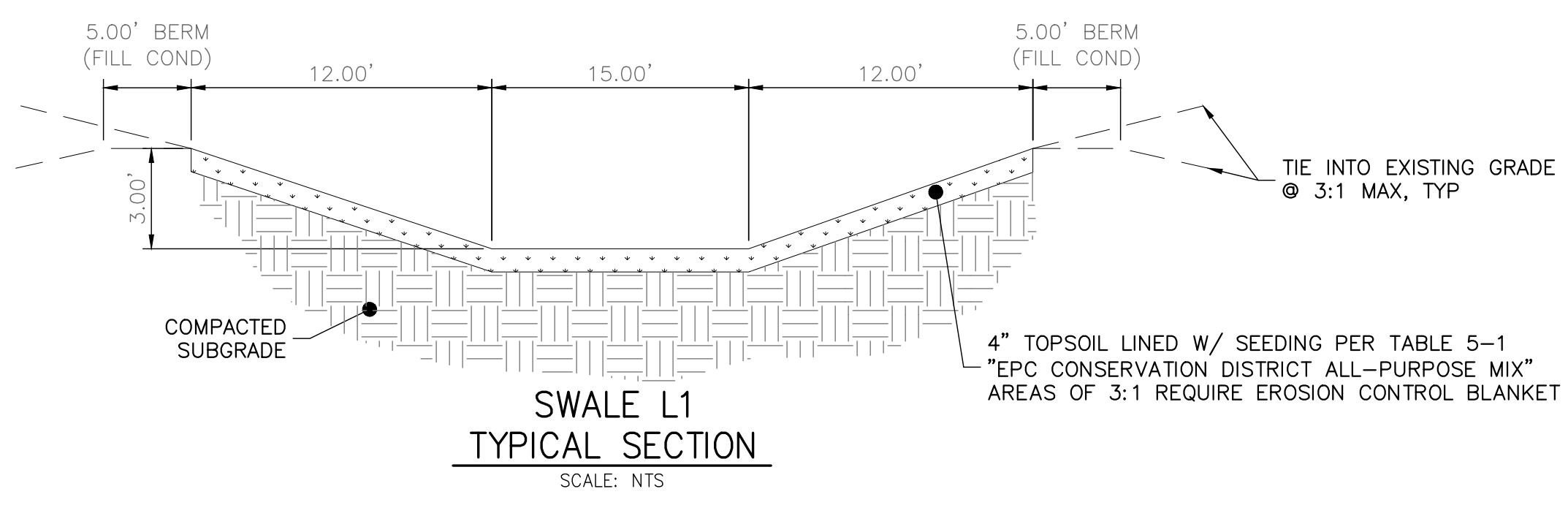
FINAL GEC (2)

DESIGN: REB  
 REVIEW: NOJ  
 DATE: 04/27/2026  
 H-SCALE: 1" = 60'  
 V-SCALE: 1" = 6'

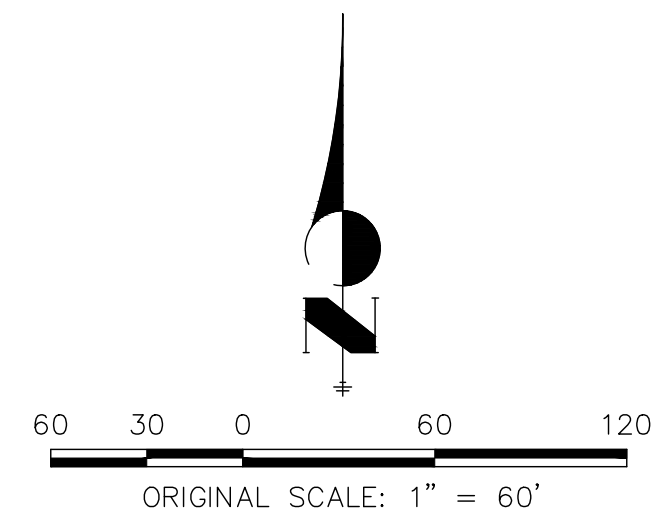
SHEET 8 OF 13



- GEC LEGEND:**
- CULVERT PROTECTION
  - CONCRETE WASHOUT AREA
  - INLET PROTECTION
  - EX FLOW DIRECTION  
PR FLOW DIRECTION
  - SEDIMENT CONTROL LOG
  - DIVERSION DITCH
  - SILT FENCE
  - LIMITS OF DISTURBANCE/  
CONSTRUCTION BOUNDARY
  - STABILIZED STAGING AREA
  - STOCKPILE PROTECTION
  - VEHICLE TRACKING CONTROL
  - SEEDING & MULCHING
  - EROSION CONTROL BLANKET
  - DO NOT DISTURB



THE LOCATIONS OF EXISTING ABOVE GROUND AND UNDERGROUND UTILITIES ARE SHOWN IN AN APPROXIMATE WAY ONLY. THE CONTRACTOR SHALL DETERMINE THE EXACT LOCATION OF ALL EXISTING UTILITIES BEFORE COMMENCING WORK. THE CONTRACTOR SHALL BE FULLY RESPONSIBLE FOR ANY AND ALL DAMAGES WHICH MIGHT BE CAUSED BY HIS FAILURE TO EXACTLY LOCATE AND PRESERVE ANY AND ALL ABOVE GROUND AND UNDERGROUND UTILITIES.



**ENGINEER'S STATEMENT**  
 PREPARED UNDER MY DIRECT SUPERVISION AND ON BEHALF OF ALL TERRAIN ENGINEERING

RYAN E. BURNS, P.E.  
 COLORADO P.E. 54412  
 FOR AND ON BEHALF OF ALL TERRAIN ENGINEERING LLC



PREPARED FOR:  
 TURKEY CANON QUARRY INC.  
 20 BOULDER CREST ST. STE 100  
 COLORADO SPRINGS, CO 80903  
 ATTN: JIM MORLEY  
 (719) 491-3024  
 MORLEY.MORLEY@GMAIL.COM

UNTIL SUCH TIME AS THESE DRAWINGS ARE APPROVED BY THE APPROPRIATE REVIEWING AGENCIES, ALL TERRAIN ENGINEERING APPROVES THEIR USE ONLY FOR THE PURPOSES DESIGNATED BY WRITTEN AUTHORIZATION.

DATE	DESCRIPTION

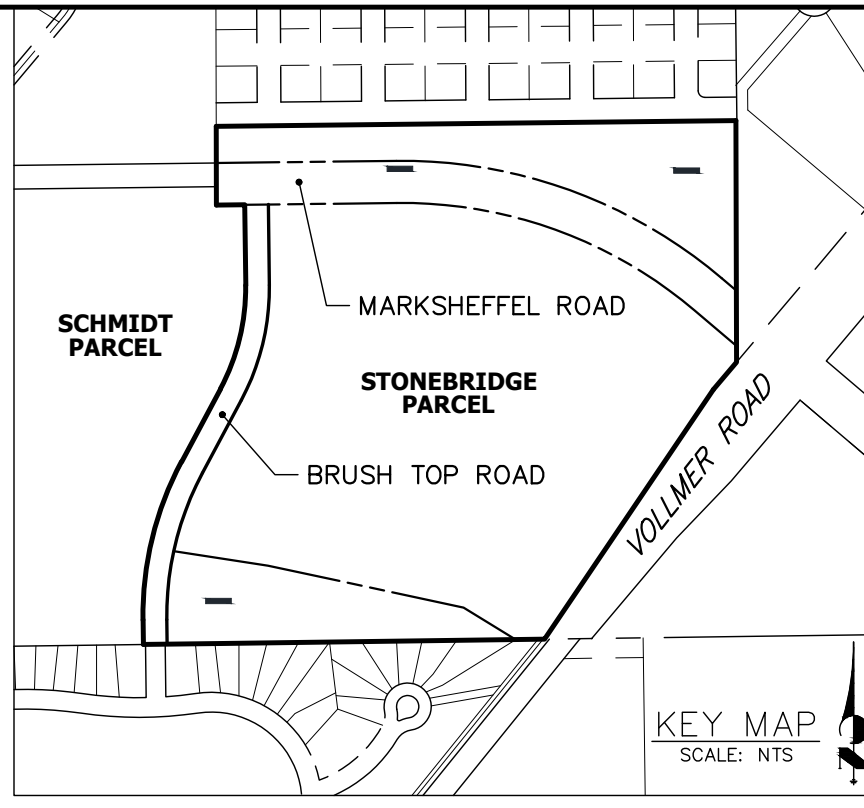
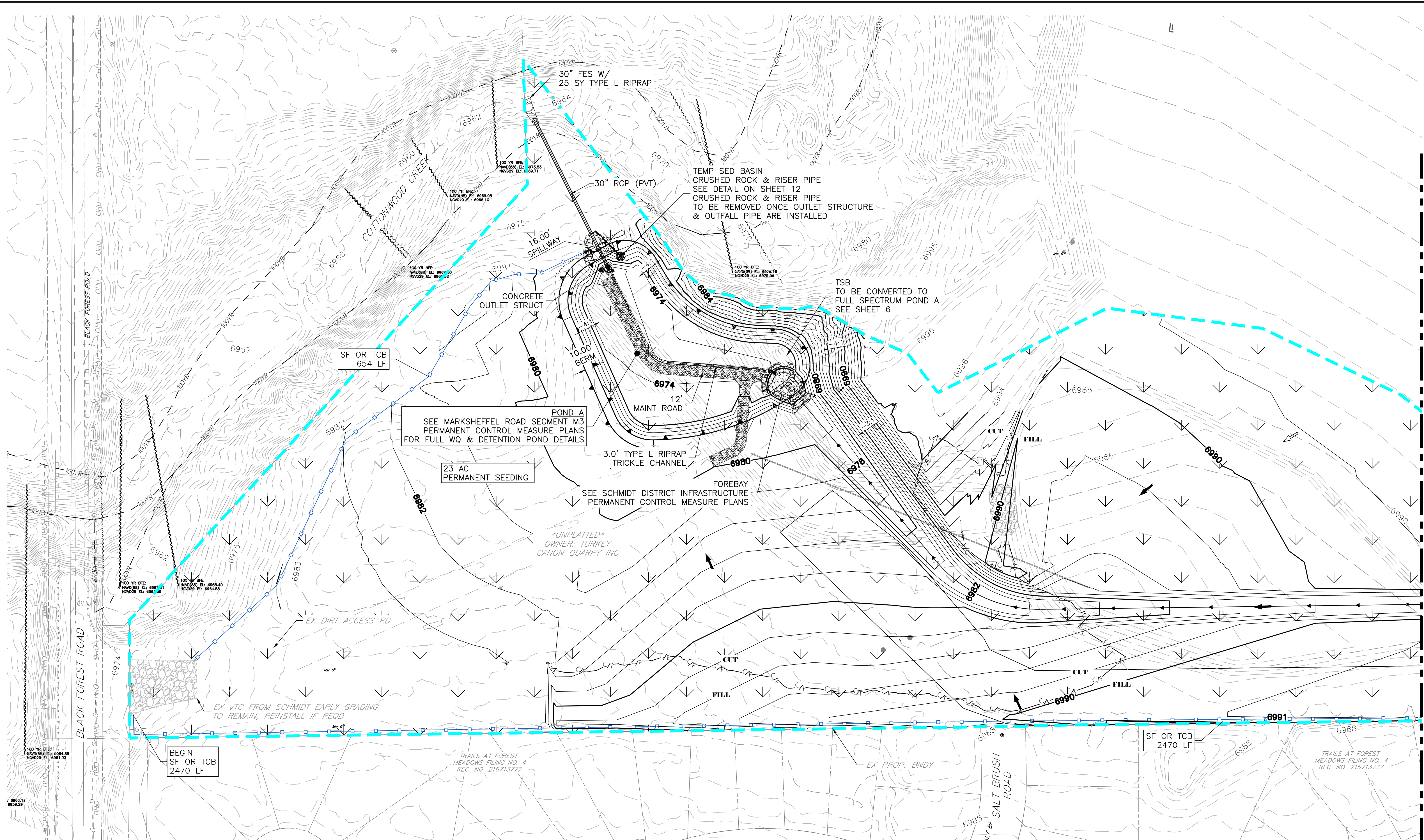
MARKSHEFFEL ROAD - SEGMENT M3

FINAL GEC (3)

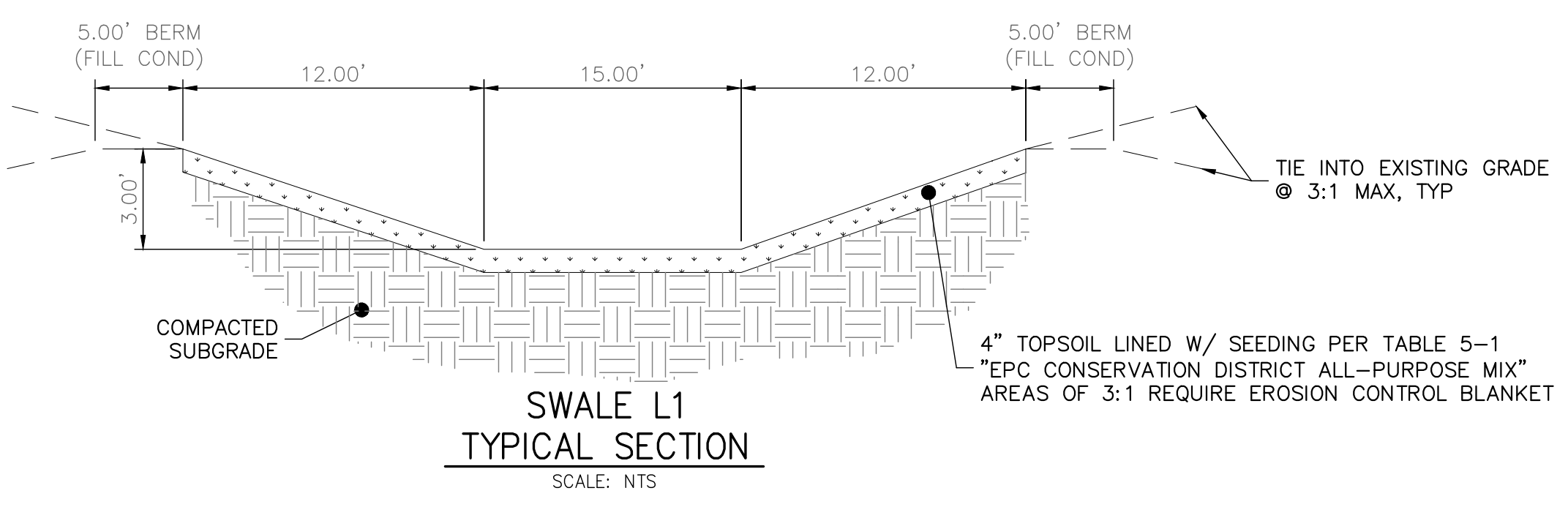
DESIGN: REB  
 REVIEW: NOJ  
 DATE: 04/27/2026

H-SCALE: 1" = 60'  
 V-SCALE: 1" = 6'

SHEET  
 9 OF 13

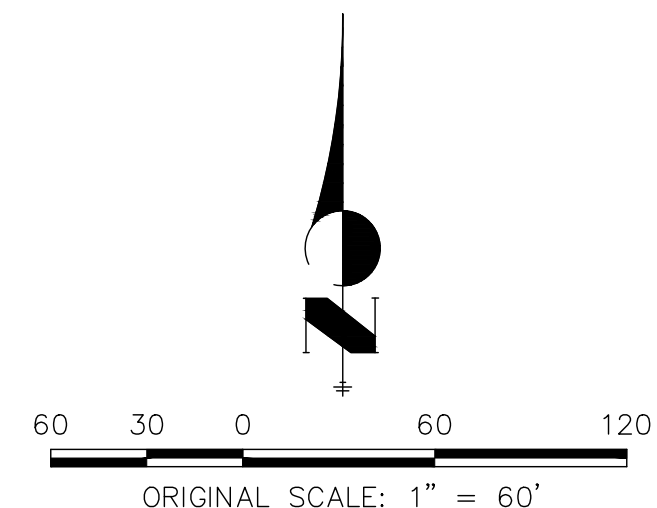


- GEC LEGEND:**
- CULVERT PROTECTION
  - CONCRETE WASHOUT AREA
  - INLET PROTECTION
  - EX FLOW DIRECTION  
PR FLOW DIRECTION
  - SEDIMENT CONTROL LOG
  - DIVERSION DITCH
  - LIMITS OF DISTURBANCE/  
CONSTRUCTION BOUNDARY
  - STABILIZED STAGING AREA
  - STOCKPILE PROTECTION
  - VEHICLE TRACKING CONTROL
  - SEEDING & MULCHING
  - EROSION CONTROL BLANKET
  - DO NOT DISTURB



Know what's below.  
Call before you dig.

THE LOCATIONS OF EXISTING ABOVE GROUND AND UNDERGROUND UTILITIES ARE SHOWN IN AN APPROXIMATE WAY ONLY. THE CONTRACTOR SHALL DETERMINE THE EXACT LOCATION OF ALL EXISTING UTILITIES BEFORE COMMENCING WORK. THE CONTRACTOR SHALL BE FULLY RESPONSIBLE FOR ANY AND ALL DAMAGES WHICH MIGHT BE CAUSED BY HIS FAILURE TO EXACTLY LOCATE AND PRESERVE ANY AND ALL ABOVE GROUND AND UNDERGROUND UTILITIES.



**ENGINEER'S STATEMENT**  
PREPARED UNDER MY DIRECT SUPERVISION AND ON BEHALF OF ALL TERRAIN ENGINEERING

RYAN E. BURNS, P.E.  
COLORADO P.E. 54412  
FOR AND ON BEHALF OF ALL TERRAIN ENGINEERING LLC

PREPARED FOR:  
TURKEY CANON QUARRY INC.  
20 BOULDER CRESCENT ST. STE 100  
COLORADO SPRINGS, CO 80903  
ATTN: JIM MORLEY  
(719) 491-3024  
J.MORLEY@MORLEYCO.COM

DATE	DESCRIPTION

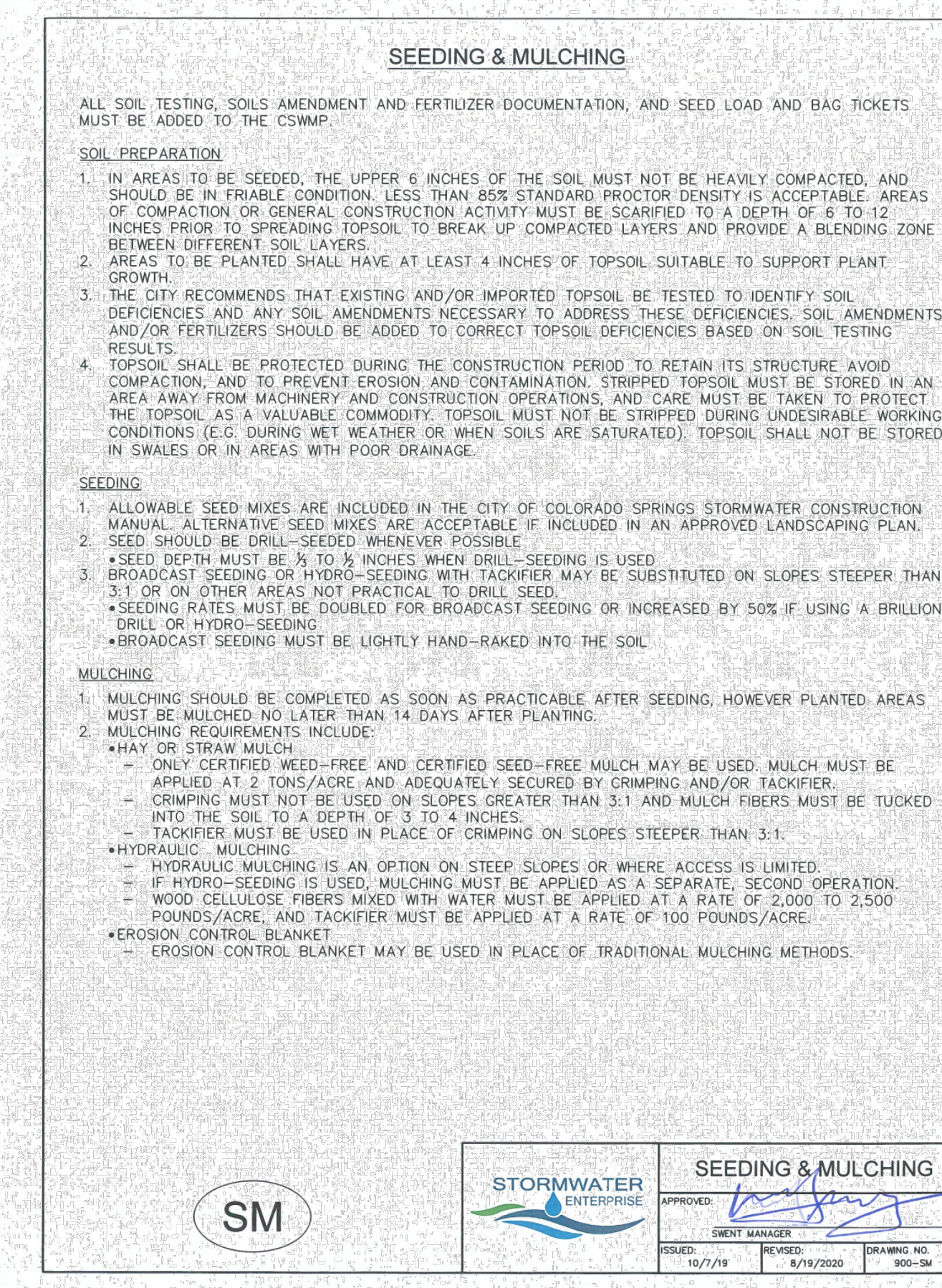
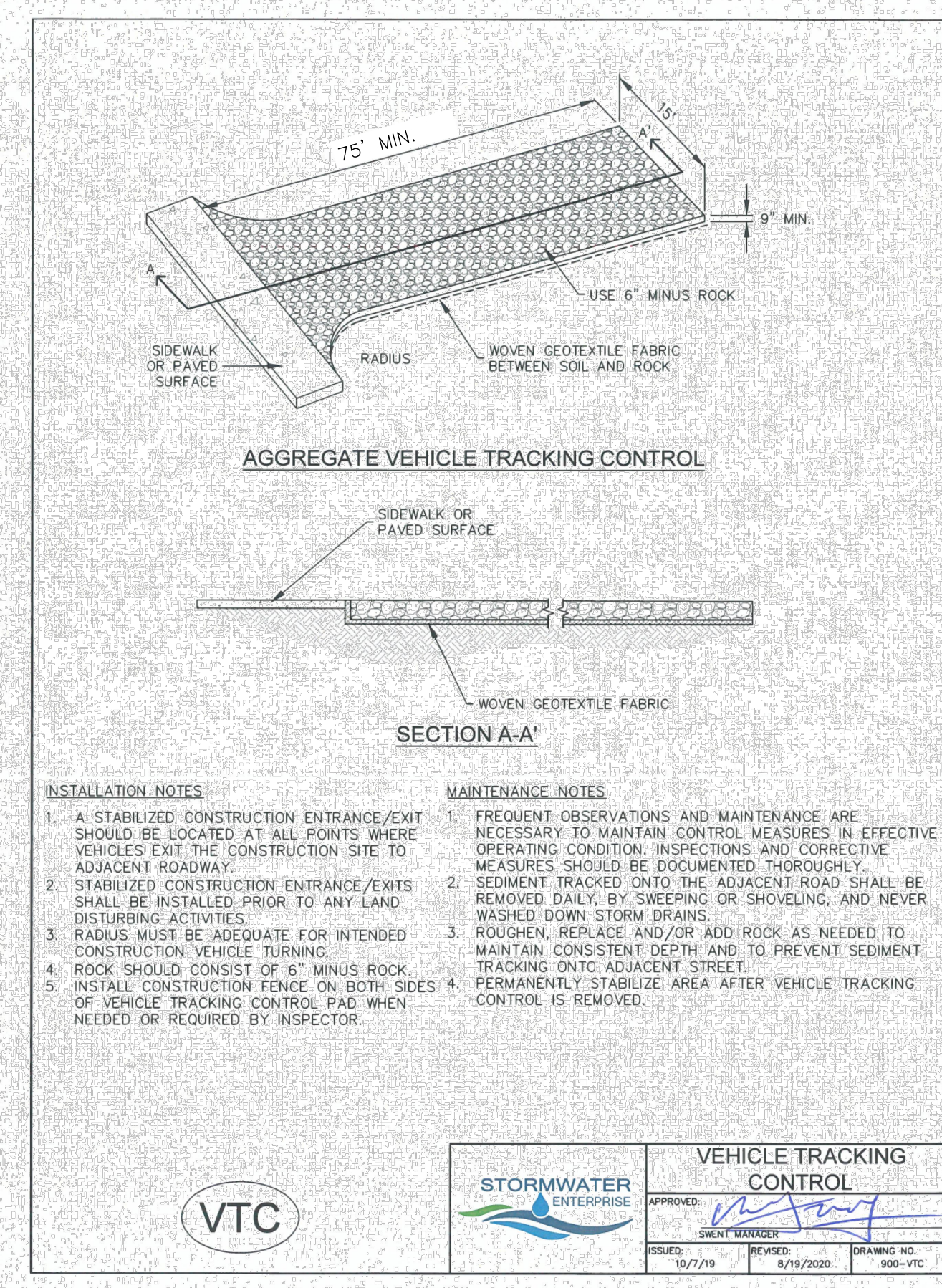
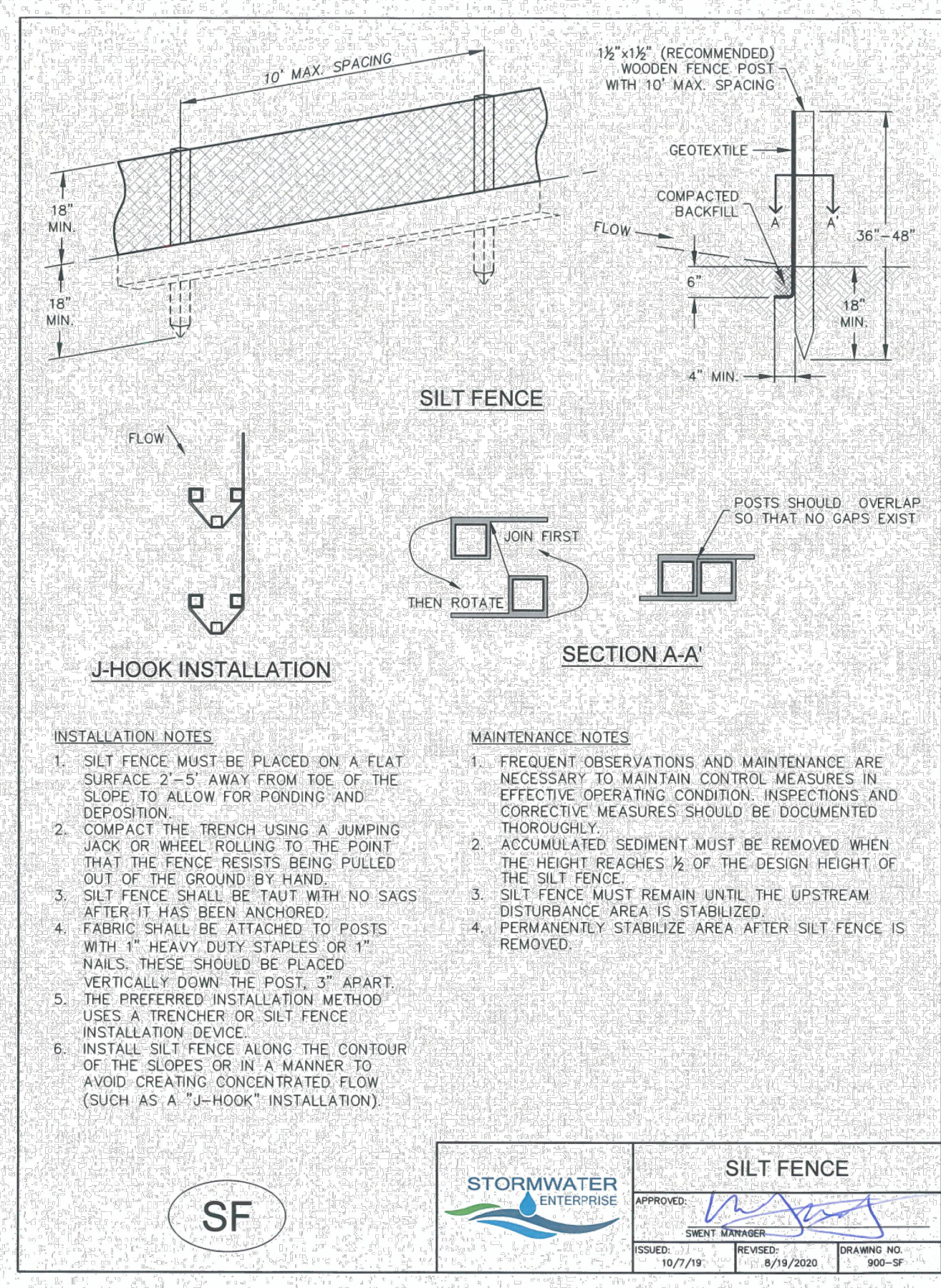
MARKSHEFFEL ROAD - SEGMENT M3  
FINAL GEC (4)

DESIGN: REB  
REVIEW: NOJ  
DATE: 04/27/2026  
H-SCALE: 1" = 60'  
V-SCALE: 1" = 6'  
SHEET  
10 OF 13



RYAN E. BURNS, P.E.  
54412  
ALL TERRAIN ENGINEERING LLC





Chapter 5  
Native Vegetation Requirements and Guidelines

**Table 5-1. El Paso County Conservation District All-Purpose Mix for Upland, Transition and Permanent Control Measure Areas**

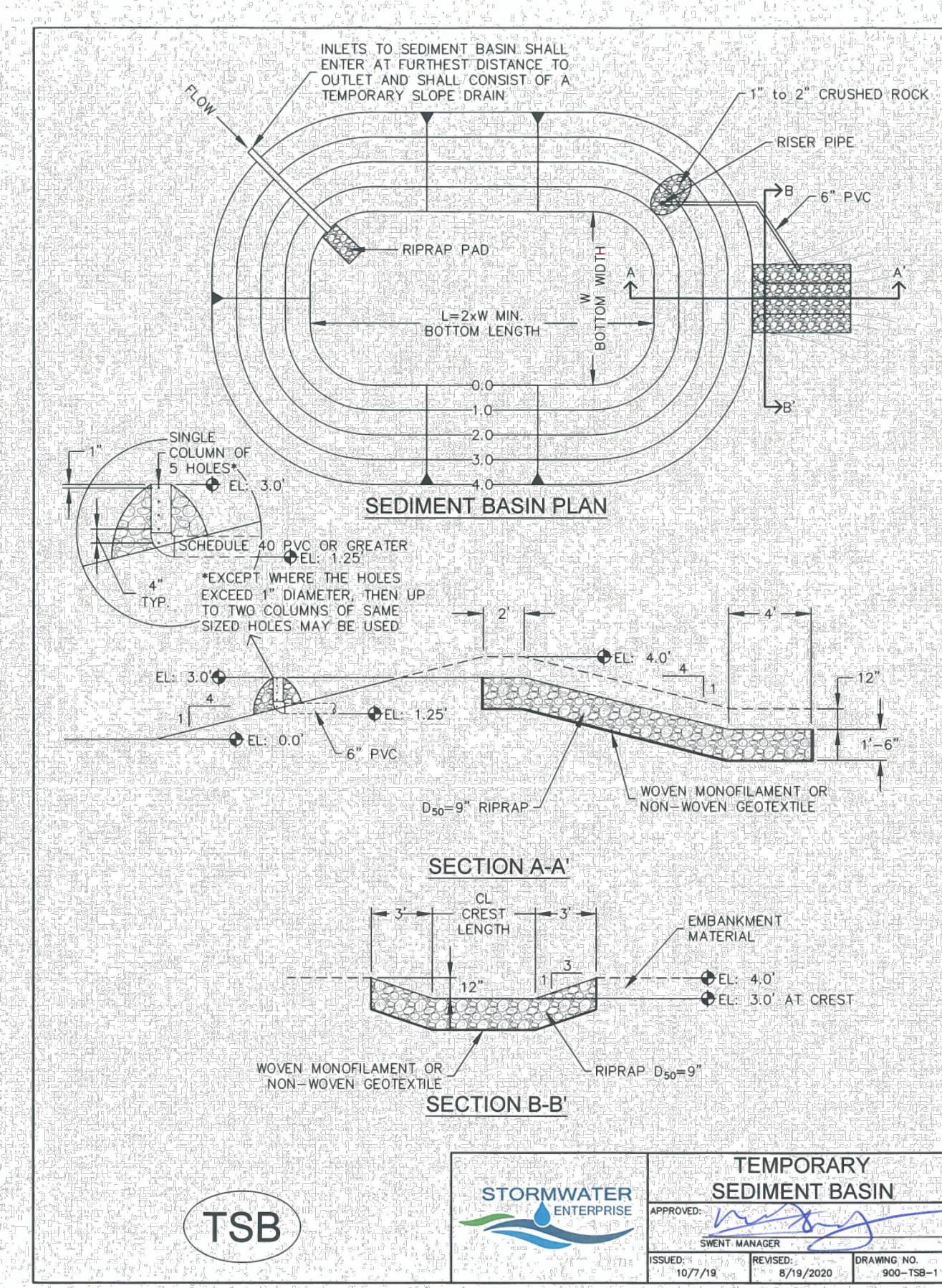
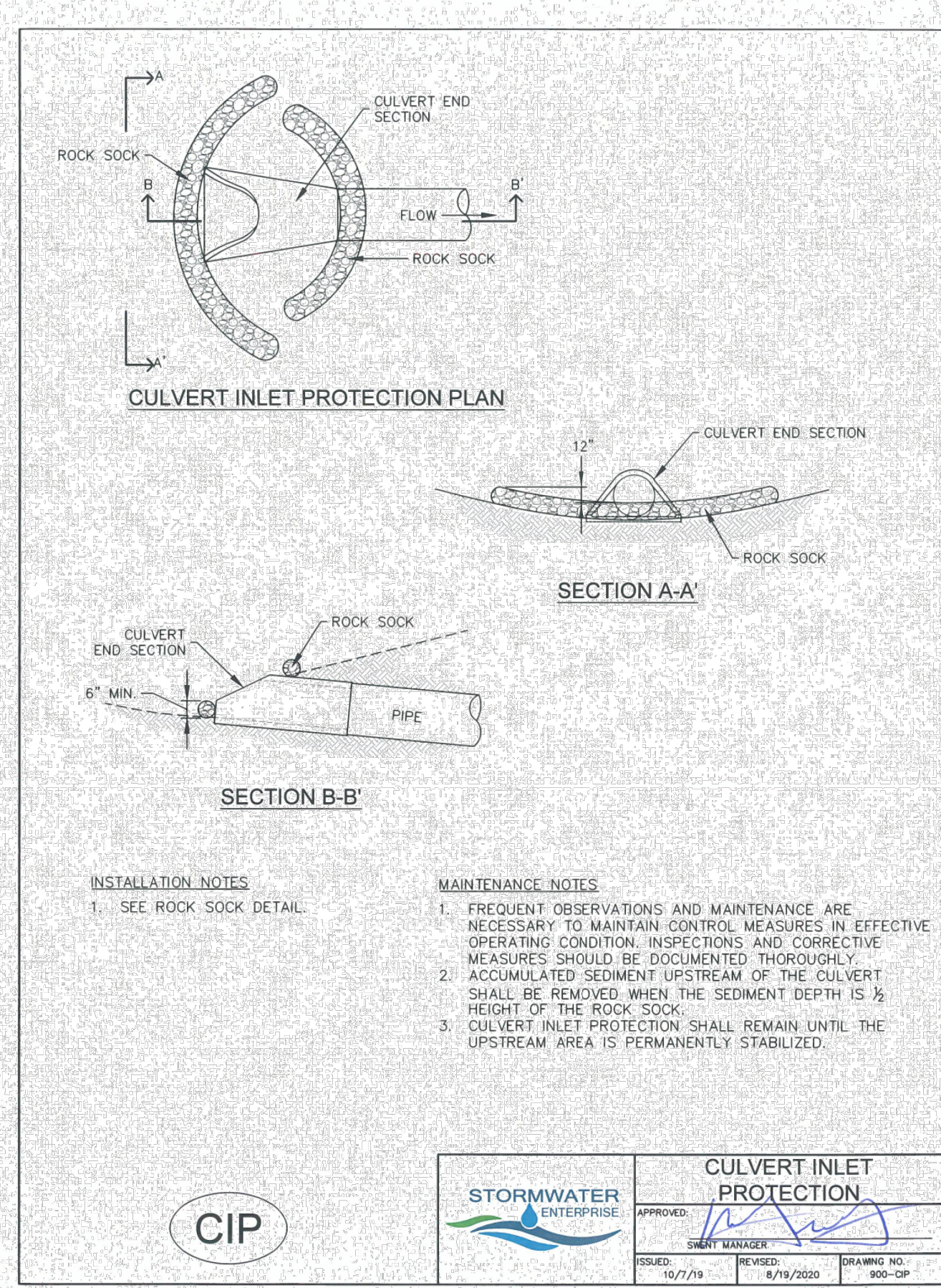
Common Name	Scientific Name	Growth Season / Form	% of Mix	Pounds PLS		
				Irrigated broadcast hydroseeded	Non-irrigated broadcast hydroseeded	Non-irrigated drilled
Bluestem, big	<i>Andropogon gerardii</i>	Warm, sod	20	4.4	2.2	1.1
Gramma, blue	<i>Bouteloua gracilis</i>	Warm, bunch	10	0.5	0.25	0.13
Green needlegrass	<i>Nassella viridula</i>	Cool, bunch	10	2	1	0.5
Wheatgrass, western	<i>Pascopyrum smithii</i>	Cool, sod	20	6.4	3.2	1.6
Gramma, sideoats	<i>Bouteloua curtipendula</i>	Warm, bunch	10	2	1	0.5
Switchgrass	<i>Panicum virgatum</i>	Warm, bunch/sod	10	0.8	0.4	0.2
Prairie sandreed	<i>Calamovilfa longifolia</i>	Warm, sod	10	1.2	0.6	0.3
Yellow indiangrass	<i>Sorghastrum nutans</i>	Warm, sod	10	2	1	0.5
Seed rate (lbs PLS/acre)				19.3	9.7	4.8

\*For portions of facilities located near or on the bottom or where wet soil conditions occur. Planting of potted nursery stock wetland plants 20-foot-on-center is recommended for sites with wetland hydrology.

†Species that will do well in the bottom of pond areas.

City of Colorado Springs  
Stormwater Enterprise

5-11  
Stormwater Construction Manual  
December 2020



**TABLE SB-1: SIZING INFORMATION FOR STANDARD SEDIMENT BASIN**

UPSTREAM DRAINAGE AREA (ROUNDED TO NEAREST ACRE), (AC)	BASIN BOTTOM WIDTH (W), (FT)	SPILLWAY CREST LENGTH (CL), (FT)	HOLE DIAMETER (HD), (IN)
1	12K	2	3/4
2	21	3	1 1/4
3	28	5	1 1/2
4	33K	6	1 3/4
5	38K	8	2 1/4
6	43	9	2 1/2
7	47K	11	2 3/4
8	51	12	2 3/4
9	55	13	3
10	58K	15	3 1/4
11	61	16	3 1/2
12	64	18	3 3/4
13	67K	19	3 3/4
14	70K	21	3 3/4
15	73K	22	3 3/4

**INSTALLATION NOTES**

- FOR STANDARD BASIN, BOTTOM DIMENSION MAY BE MODIFIED AS LONG AS BOTTOM AREA IS NOT REDUCED.
- EMBANKMENT MATERIAL SHALL CONSIST OF SOIL FREE OF DEBRIS, ORGANIC MATERIAL, AND ROCKS OR CONCRETE GREATER THAN 3 INCHES, AND SHALL HAVE A MINIMUM OF 15 PERCENT BY WEIGHT PASSING THE NO. 200 SIEVE.
- EMBANKMENT MATERIAL SHALL BE COMPACTED TO AT LEAST 95 PERCENT OF MAXIMUM DENSITY IN ACCORDANCE WITH ASTM D-698. PIPE SCHEDULE 40 OR GREATER SHALL BE USED.
- THE DETAILS SHOWN ON THESE SHEETS PERTAIN TO STANDARD SEDIMENT BASIN(S) FOR DRAINAGE AREAS LESS THAN 15 ACRES. SEE CONSTRUCTION DRAWINGS FOR EMBANKMENT, STORAGE VOLUME, SPILLWAY, OUTLET, AND OUTLET PROTECTION DETAILS FOR ANY SEDIMENT BASIN(S) THAT HAVE BEEN INDIVIDUALLY DESIGNED FOR DRAINAGE AREAS LARGER THAN 15 ACRES. DESIGN CALCULATIONS MUST BE APPROVED PRIOR TO IMPLEMENTATION.

**MAINTENANCE NOTES**

- FREQUENT OBSERVATIONS AND MAINTENANCE ARE NECESSARY TO MAINTAIN CONTROL MEASURES IN EFFECTIVE OPERATING CONDITION. INSPECTIONS AND CORRECTIVE MEASURES SHOULD BE DOCUMENTED THOROUGHLY.
- SEDIMENT ACCUMULATED IN BASIN SHALL BE REMOVED AS NEEDED TO MAINTAIN CONTROL MEASURE EFFECTIVENESS. TYPICALLY WHEN SEDIMENT DEPTH REACHES ONE FOOT (I.E. TWO FEET BELOW SPILLWAY CREST).
- SEDIMENT BASINS ARE TO REMAIN IN PLACE UNTIL THE UPSTREAM DISTURBED AREA IS PERMANENTLY STABILIZED.
- PERMANENTLY STABILIZE AREA AFTER SEDIMENT BASIN REMOVAL.

**STORMWATER ENTERPRISE**

**TEMPORARY SEDIMENT BASIN**

ISSUED: 10/7/19 REVISED: 6/19/2020 DRAWING NO: 900-TSB-2

UNLESS SUCH TIME AS THESE DRAWINGS ARE APPROVED BY THE APPROPRIATE REVIEWING AGENCIES, ALL TERRAIN ENGINEERING APPROVES THEIR USE ONLY FOR THE PURPOSES DESIGNATED BY WRITTEN AUTHORIZATION.

PREPARED FOR:  
TURKEY CANON QUARRY INC.  
20 BOULDER CRESCENT ST. STE 100  
COLORADO SPRINGS, CO 80903  
ATTN: JIM MORLEY  
(719) 491-3024  
J.MORLEY@MORLEYCO.COM

MARKSHEFFEL ROAD - SEGMENT M3

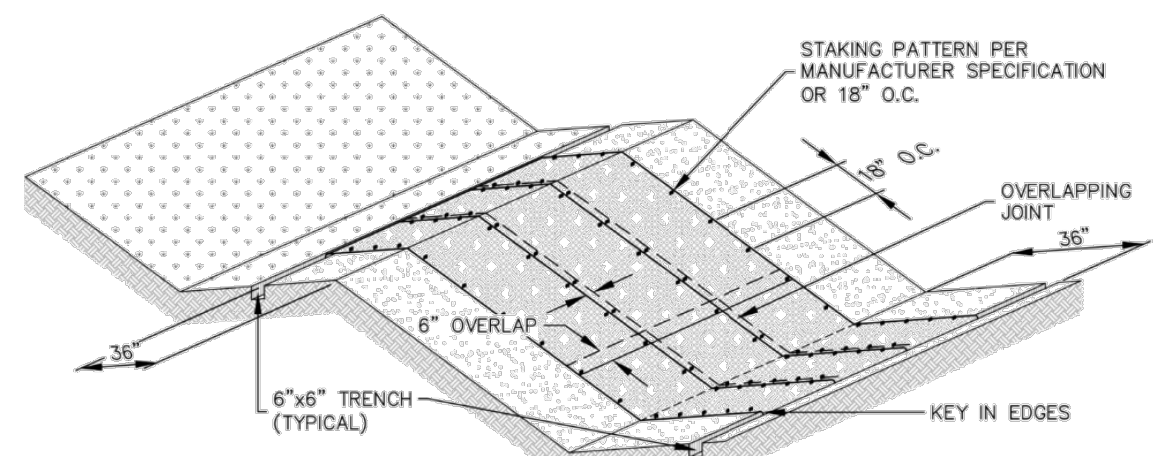
GEC DETAILS

DESIGN: REB  
REVIEW: NOJ  
DATE: 04/27/2026

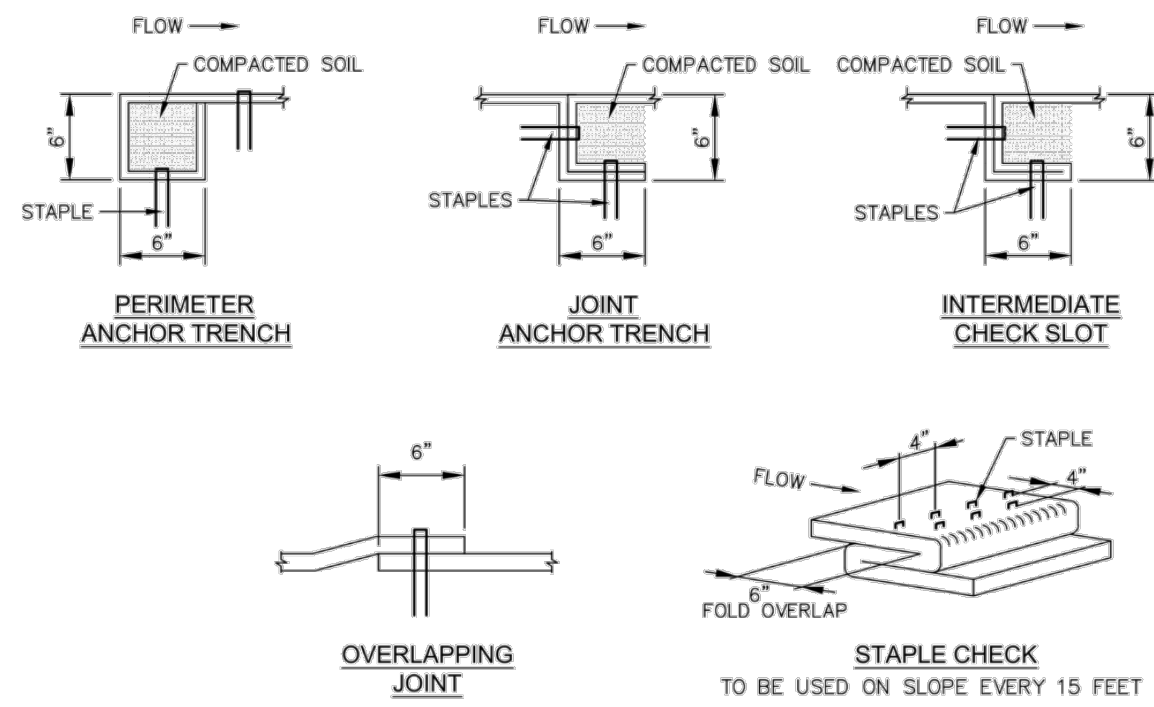
ENGINEER'S STATEMENT  
STANDARD DETAILS SHOWN WERE REVIEWED ONLY AS TO THEIR APPLICATION ON THIS PROJECT

RYAN E. BURNS, P.E.  
COLORADO P.E. 0054412  
FOR AND ON BEHALF OF ALL TERRAIN ENGINEERING, LLC

12 OF 13



**EROSION CONTROL BLANKET**



		<b>EROSION CONTROL BLANKET</b>	
ISSUED:	10/7/19	REVISED:	8/19/2020
DRAWING NO.:	900-ECB-1		

- INSTALLATION NOTES**
- 100% NATURAL AND BIODEGRADABLE MATERIALS ARE REQUIRED FOR EROSION CONTROL BLANKETS. TRM PRODUCTS MAY BE USED WHERE APPROPRIATE AS DESIGNATED BY THE ENGINEER.
  - IN AREAS WHERE EROSION CONTROL BLANKETS ARE SHOWN ON THE PLANS, THE PERMITTEE SHALL PLACE TOPSOIL AND PERFORM FINAL GRADING, SURFACE PREPARATION, AND SEEDING AND MULCHING. SUBGRADE SHALL BE SMOOTH AND MOST PRIOR TO EROSION CONTROL BLANKET INSTALLATION, AND THE EROSION CONTROL BLANKET SHALL BE IN FULL CONTACT WITH THE SUBGRADE. NO GAPS OR VOIDS SHALL EXIST UNDER THE BLANKET.
  - PERIMETER ANCHOR TRENCH SHALL BE USED ALONG THE OUTSIDE PERIMETER OF ALL BLANKET AREAS.
  - JOINT ANCHOR TRENCH SHALL BE USED TO JOIN ROLLS OF EROSION CONTROL BLANKETS TOGETHER (LONGITUDINALLY AND TRANSVERSELY) FOR ALL EROSION CONTROL BLANKETS.
  - INTERMEDIATE CHECK SLOT OR STAPLE CHECK SHALL BE INSTALLED EVERY 15' DOWN SLOPES. IN DRAINAGEWAYS, INSTALL CHECK SLOTS EVERY 25' PERPENDICULAR TO FLOW DIRECTION.
  - OVERLAPPING JOINT DETAIL SHALL BE USED TO JOIN ROLLS OF EROSION CONTROL BLANKETS TOGETHER FOR EROSION CONTROL BLANKETS ON SLOPES.
  - MATERIAL SPECIFICATIONS OF EROSION CONTROL BLANKETS SHALL CONFORM TO TABLE ECB-1.
  - ANY AREAS OF SEEDING AND MULCHING DISTURBED IN THE PROCESS OF INSTALLING EROSION CONTROL BLANKETS SHALL BE RESEEDED AND MULCHED.
  - STRAW EROSION CONTROL BLANKETS SHALL NOT BE USED WITHIN STREAMS AND DRAINAGE CHANNELS.
  - COMPACT ALL TRENCHES.

- MAINTENANCE NOTES**
- FREQUENT OBSERVATIONS AND MAINTENANCE ARE NECESSARY TO MAINTAIN CONTROL MEASURES IN EFFECTIVE OPERATING CONDITION. INSPECTIONS AND CORRECTIVE MEASURES SHOULD BE DOCUMENTED THOROUGHLY.
  - EROSION CONTROL BLANKETS SHALL BE LEFT IN PLACE TO EVENTUALLY BIODEGRADE. TRM MUST BE REMOVED AT THE DISCRETION OF THE GEC INSPECTOR.
  - ANY EROSION CONTROL BLANKET PULLED OUT, TORN, OR OTHERWISE DAMAGED SHALL BE REPAIRED OR REINSTALLED. ANY SUBGRADE AREAS BELOW GEOTEXTILE THAT HAVE ERODED TO CREATE A VOID UNDER THE BLANKET, OR THAT REMAIN DEVOID OF GRASS SHALL BE REPAIRED, RESEEDED AND MULCHED AND THE EROSION CONTROL BLANKET REINSTALLED.

**TABLE ECB-1, EROSION CONTROL BLANKET MATERIAL SPECIFICATIONS**

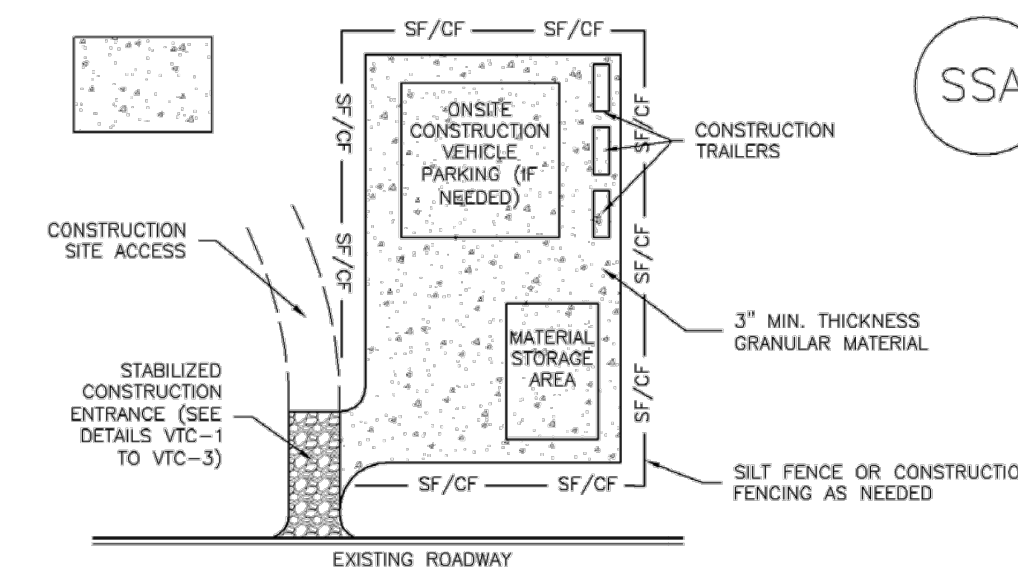
TYPE	COCONUT CONTENT	STRAW CONTENT	EXCELSIOR CONTENT	RECOMMENDED NETTING
STRAW	---	100%	---	DOUBLE/NATURAL
STRAW-COCONUT	30% MIN.	70% MAX.	---	DOUBLE/NATURAL
COCONUT	100%	---	---	DOUBLE/NATURAL
EXCELSIOR	---	---	100%	DOUBLE/NATURAL



		<b>EROSION CONTROL BLANKET</b>	
ISSUED:	10/7/19	REVISED:	8/19/2020
DRAWING NO.:	900-ECB-2		

**Stabilized Staging Area (SSA)**

SM-6



**SSA-1. STABILIZED STAGING AREA**

**STABILIZED STAGING AREA INSTALLATION NOTES**

- SEE PLAN VIEW FOR LOCATION OF STAGING AREA(S). CONTRACTOR MAY ADJUST LOCATION AND SIZE OF STAGING AREA WITH APPROVAL FROM THE LOCAL JURISDICTION.
- STABILIZED STAGING AREA SHOULD BE APPROPRIATE FOR THE NEEDS OF THE SITE. OVERSIZING RESULTS IN A LARGER AREA TO STABILIZE FOLLOWING CONSTRUCTION.
- STAGING AREA SHALL BE STABILIZED PRIOR TO OTHER OPERATIONS ON THE SITE.
- THE STABILIZED STAGING AREA SHALL CONSIST OF A MINIMUM 3" THICK GRANULAR MATERIAL.
- UNLESS OTHERWISE SPECIFIED BY LOCAL JURISDICTION, ROCK SHALL CONSIST OF DOT SECT. #703, AASHTO #3 COARSE AGGREGATE OR 6" (MINUS) ROCK.
- ADDITIONAL PERIMETER BMPs MAY BE REQUIRED INCLUDING BUT NOT LIMITED TO SILT FENCE AND CONSTRUCTION FENCING.

**STABILIZED STAGING AREA MAINTENANCE NOTES**

- INSPECT BMPs EACH WORKDAY, AND MAINTAIN THEM IN EFFECTIVE OPERATING CONDITION. MAINTENANCE OF BMPs SHOULD BE PROACTIVE, NOT REACTIVE. INSPECT BMPs AS SOON AS POSSIBLE (AND ALWAYS WITHIN 24 HOURS) FOLLOWING A STORM THAT CAUSES SURFACE EROSION, AND PERFORM NECESSARY MAINTENANCE.
- FREQUENT OBSERVATIONS AND MAINTENANCE ARE NECESSARY TO MAINTAIN BMPs IN EFFECTIVE OPERATING CONDITION. INSPECTIONS AND CORRECTIVE MEASURES SHOULD BE DOCUMENTED THOROUGHLY.
- WHERE BMPs HAVE FAILED, REPAIR OR REPLACEMENT SHOULD BE INITIATED UPON DISCOVERY OF THE FAILURE.
- ROCK SHALL BE REAPPLIED OR REGRADED AS NECESSARY IF RUTTING OCCURS OR UNDERLYING SUBGRADE BECOMES EXPOSED.

November 2010 Urban Drainage and Flood Control District  
Urban Storm Drainage Criteria Manual Volume 3

SSA-3

SM-6

**Stabilized Staging Area (SSA)**

**STABILIZED STAGING AREA MAINTENANCE NOTES**

- STABILIZED STAGING AREA SHALL BE ENLARGED IF NECESSARY TO CONTAIN PARKING, STORAGE, AND UNLOADING/LOADING OPERATIONS.
  - THE STABILIZED STAGING AREA SHALL BE REMOVED AT THE END OF CONSTRUCTION. THE GRANULAR MATERIAL SHALL BE REMOVED OR, IF APPROVED BY THE LOCAL JURISDICTION, USED ON SITE AND THE AREA COVERED WITH TOPSOIL, SEEDS AND MULCHED OR OTHERWISE STABILIZED IN A MANNER APPROVED BY LOCAL JURISDICTION.
- NOTE: MANY MUNICIPALITIES PROHIBIT THE USE OF RECYCLED CONCRETE AS GRANULAR MATERIAL FOR STABILIZED STAGING AREAS DUE TO DIFFICULTIES WITH RE-ESTABLISHMENT OF VEGETATION IN AREAS WHERE RECYCLED CONCRETE WAS PLACED.
- NOTE: MANY JURISDICTIONS HAVE BMP DETAILS THAT VARY FROM LUDCO STANDARD DETAILS. CONSULT WITH LOCAL JURISDICTIONS AS TO WHICH DETAIL SHOULD BE USED WHEN DIFFERENCES ARE NOTED.
- (DETAILS ADAPTED FROM DOUGLAS COUNTY, COLORADO, NOT AVAILABLE IN AUTOCAD)

SSA-4 Urban Drainage and Flood Control District  
Urban Storm Drainage Criteria Manual Volume 3



PREPARED FOR:  
TURKEY CANON QUARRY INC.  
20 BOULDER CRESCENT ST. STE 100  
COLORADO SPRINGS, CO 80903  
ATTN: JIM MORLEY  
(719) 491-3024  
J.MORLEY@MORLEYCO.COM

UNTIL SUCH TIME AS THESE DRAWINGS ARE APPROVED BY THE APPROPRIATE REVIEWING AGENCIES, ALL TERRAIN ENGINEERING APPROVES THEIR USE ONLY FOR THE PURPOSES DESIGNATED BY WRITTEN AUTHORIZATION.

JOB NO. 24013 LOCATION: EPC

REV	DESCRIPTION	DATE

MARKSHEFFEL ROAD - SEGMENT M3

GEC DETAILS

DESIGN: REB  
REVIEW: NOJ  
DATE: 04/27/2026

H-SCALE: N/A  
V-SCALE: N/A

SHEET  
13 OF 13

**ENGINEER'S STATEMENT**  
STANDARD DETAILS SHOWN WERE REVIEWED ONLY AS TO THEIR APPLICATION ON THIS PROJECT

RYAN E. BURNS, P.E.  
COLORADO P.E. 0054412  
FOR AND ON BEHALF OF JR ENGINEERING