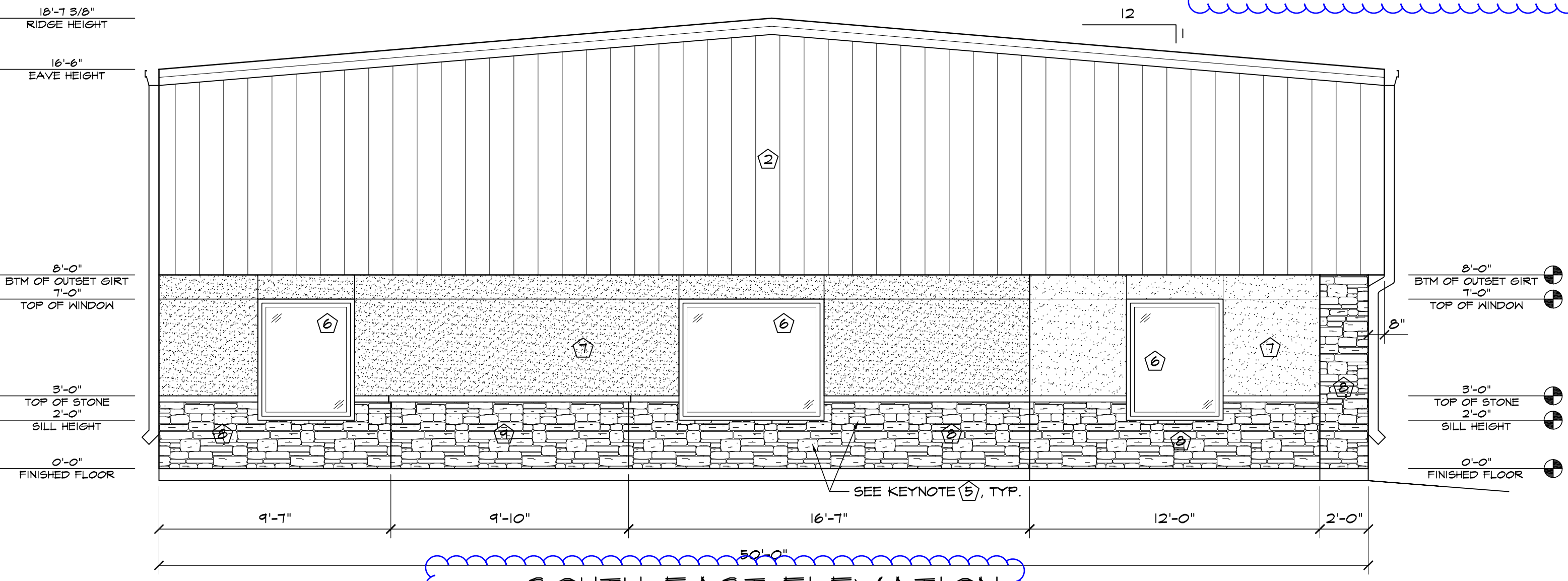


1 NORTH-EAST ELEVATION
SCALE: 1/4"=1'-0"

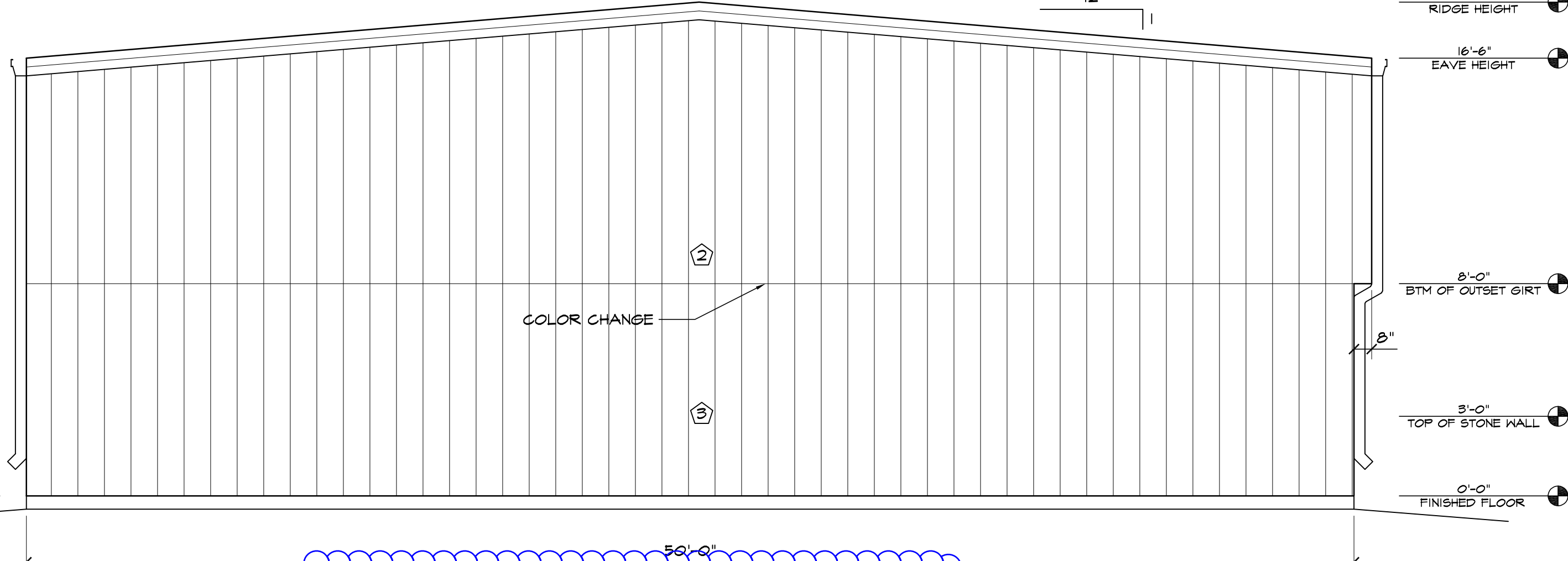
North-West per plans.

ELEVATION KEY NOTES	
1	PREFINISHED 24 GA. "PBR" METAL ROOF PANELS BY METAL BUILDING PROVIDER.
2	PREFINISHED 26 GA. "PBR" METAL WALL PANELS BY METAL BUILDING PROVIDER. COLOR - TO BE DETERMINED.
3	PREFINISHED 26 GA. "PBR" METAL WALL PANELS BY METAL BUILDING PROVIDER. COLOR - TO BE DETERMINED.
4	PREFINISHED GUTTER & DOWNSPOUTS BY METAL BUILDING PROVIDER.
5	WALL PACK LIGHT - TOP OF LIGHT @ 15'-6" A.F.F.
6	SEE SCHEDULES ON A4.1 FOR ALL DOOR & WINDOW INFORMATION.
7	3/4" STUCCO FINISH SYS., EXPANSION JOINT - 120 SF MAX AREA.
8	STONE VENEER W/ 2" GAP INSTALLED W/ SCHLUTER TRIM.
9	CONC WALL W/ STONE VENEER.



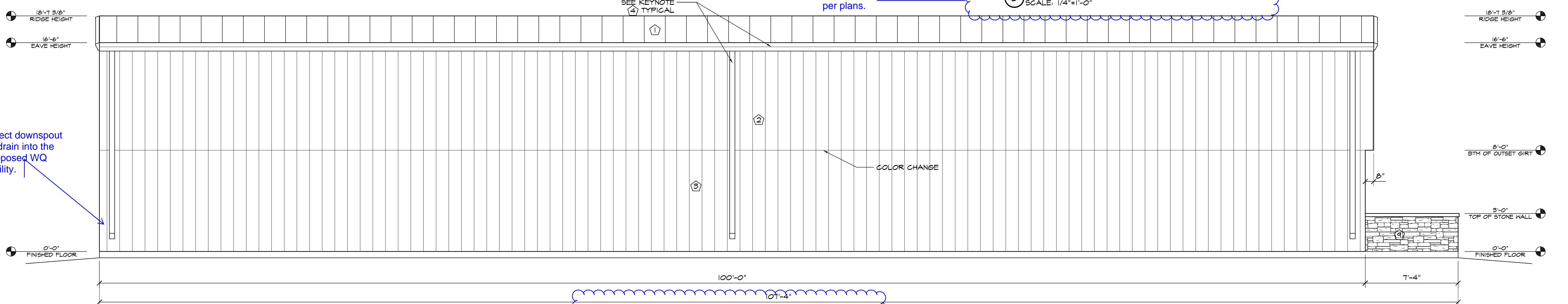
2 SOUTH-EAST ELEVATION
SCALE: 1/4"=1'-0"

North-East per plans.



3 NORTH-WEST ELEVATION
SCALE: 1/4"=1'-0"

South-West per plans.



4 SOUTH-WEST ELEVATION
SCALE: 1/4"=1'-0"

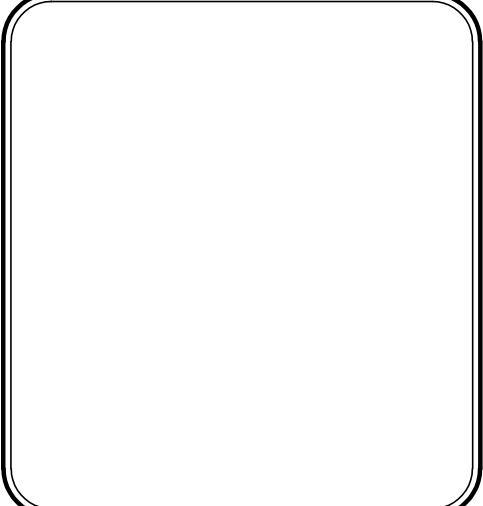
South-East per plans.

Direct downspout to drain into the proposed VQ facility.

HAMMERS CONSTRUCTION INC.
COMMERCIAL GENERAL CONTRACTORS SPECIALIZING IN DESIGN/BUILD
PRESIDENT: STEVE R. HAMMERS
VICE PRES: DAVID J. HAMMERS
1411 WOOLSEY HEIGHTS
COLORADO SPRINGS, CO 80915
(719) 570-1589 FAX (719) 570-7008
www.hammersconstruction.com

THIS DRAWING CONTAINS MATERIAL & INFORMATION WHICH MAY NOT BE REPRODUCED WITHOUT WRITTEN CONSENT OF HAMMERS CONSTRUCTION INC. THESE DRAWINGS ARE INTENDED TO BE USED ONLY BY HAMMERS CONSTRUCTION & ITS REPRESENTATIVES. THESE DRAWINGS HAVE NOT BEEN PREPARED FOR ANY OTHER PURPOSE THAN TO INDICATE THE GENERAL FEATURES AND PLACEMENT OF THE PROPOSED PROJECT. COPYRIGHT © 2017 HAMMERS CONSTRUCTION

1000, LLC
CBP LOT 12-2
7190 COLE VIEW
COLORADO SPRINGS, CO 80915
EL PASO COUNTY, COLORADO



DATE: JUNE 13, 2017
DRAWN BY: D. AQUINO
PROJ. MGR: Z. GRABTREE
SCALE: SEE PLAN
APPROVED BY:
JOB NO: 1000

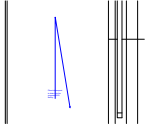
RESUBMITTALS:

COUNTY FILE NO. PPR-16-027

Replace with PPR-17-027

Markup Summary

dsdlaforce (6)



Subject: Callout
Page Label: 1
Lock: Unlocked
Author: dsdlaforce

Direct downspout to drain into the proposed WQ facility.



Subject: Cloud+
Page Label: 1
Lock: Unlocked
Author: dsdlaforce

North-West per plans.



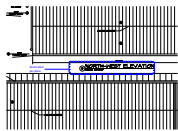
Subject: Cloud+
Page Label: 1
Lock: Unlocked
Author: dsdlaforce

North-East per plans.



Subject: Callout
Page Label: 1
Lock: Unlocked
Author: dsdlaforce

Replace with PPR-17-027



Subject: Cloud+
Page Label: 1
Lock: Unlocked
Author: dsdlaforce

South-West per plans.



Subject: Cloud+
Page Label: 1
Lock: Unlocked
Author: dsdlaforce

South-East per plans.