

STANDARD NOTES FOR EL PASO COUNTY GRADING AND EROSION CONTROL PLANS

- CONSTRUCTION MAY NOT COMMENCE UNTIL A CONSTRUCTION PERMIT IS OBTAINED FROM DEVELOPMENT SERVICES AND A PRECONSTRUCTION CONFERENCE IS HELD WITH DEVELOPMENT SERVICES INSPECTIONS.
- STORMWATER DISCHARGES FROM CONSTRUCTION SITES SHALL NOT CAUSE OR THREATEN TO CAUSE POLLUTION, CONTAMINATION, OR DEGRADATION OF STATE WATERS. ALL WORK AND EARTH DISTURBANCE SHALL BE DONE IN A MANNER THAT MINIMIZES POLLUTION OF ANY ON-SITE OR OFF SITE WATERS, INCLUDING WETLANDS.
- NOTWITHSTANDING ANYTHING DEPICTED IN THESE PLANS IN WORDS OR GRAPHIC REPRESENTATION, ALL DESIGN AND CONSTRUCTION RELATED TO ROADS, STORM DRAINAGE AND EROSION CONTROL SHALL CONFORM TO THE STANDARDS AND REQUIREMENTS OF THE MOST RECENT VERSION OF THE RELEVANT ADOPTED EL PASO COUNTY STANDARDS, INCLUDING THE LAND DEVELOPMENT CODE, THE ENGINEERING CRITERIA MANUAL, THE DRAINAGE CRITERIA MANUAL, AND THE DRAINAGE CRITERIA MANUAL VOLUME 2. ANY DEVIATIONS TO REGULATIONS AND STANDARDS MUST BE REQUESTED, AND APPROVED, IN WRITING.
- A SEPARATE STORMWATER MANAGEMENT PLAN (SWMP) FOR THIS PROJECT SHALL BE COMPLETED AND AN EROSION AND STORMWATER QUALITY CONTROL PERMIT (ESQCP) ISSUED PRIOR TO COMMENCING CONSTRUCTION. DURING CONSTRUCTION THE SWMP IS THE RESPONSIBILITY OF THE DESIGNATED STORMWATER MANAGER, SHALL BE LOCATED ON SITE AT ALL TIMES AND SHALL BE KEPT UP TO DATE WITH WORK PROGRESS AND CHANGES IN THE FIELD.
- ONCE THE ESQCP HAS BEEN ISSUED, THE CONTRACTOR MAY INSTALL THE INITIAL STAGE EROSION AND SEDIMENT CONTROL BMPs AS INDICATED ON THE GEC. A PRECONSTRUCTION MEETING BETWEEN THE CONTRACTOR, ENGINEER, AND EL PASO COUNTY WILL BE HELD PRIOR TO ANY CONSTRUCTION. IT IS THE RESPONSIBILITY OF THE APPLICANT TO COORDINATE THE MEETING TIME AND PLACE WITH COUNTY DSD INSPECTIONS STAFF.
- SOIL EROSION CONTROL MEASURES FOR ALL SLOPES, CHANNELS, DITCHES, OR ANY DISTURBED LAND AREA SHALL BE COMPLETED WITHIN 21 CALENDAR DAYS AFTER FINAL GRADING, OR FINAL EARTH DISTURBANCE, HAS BEEN COMPLETED. DISTURBED AREAS AND STOCKPILES WHICH ARE NOT AT FINAL GRADE BUT WILL REMAIN DORMANT FOR LONGER THAN 30 DAYS SHALL ALSO BE MULCHED WITHIN 21 DAYS AFTER INTERIM GRADING. AN AREA THAT IS GOING TO REMAIN IN AN INTERIM STATE FOR MORE THAN 60 DAYS SHALL ALSO BE SEEDED. ALL TEMPORARY SOIL EROSION CONTROL MEASURES AND BMPs SHALL BE MAINTAINED UNTIL PERMANENT SOIL EROSION CONTROL MEASURES ARE IMPLEMENTED AND ESTABLISHED.
- TEMPORARY SOIL EROSION CONTROL FACILITIES SHALL BE REMOVED AND EARTH DISTURBANCE AREAS GRADED AND STABILIZED WITH PERMANENT SOIL EROSION CONTROL MEASURES PURSUANT TO STANDARDS AND SPECIFICATION PRESCRIBED IN THE DCM VOLUME II AND THE ENGINEERING CRITERIA MANUAL (ECM) APPENDIX I.
- ALL PERSONS ENGAGED IN EARTH DISTURBANCE SHALL IMPLEMENT AND MAINTAIN ACCEPTABLE SOIL EROSION AND SEDIMENT CONTROL MEASURES INCLUDING BMPs IN CONFORMANCE WITH THE EROSION CONTROL TECHNICAL STANDARDS OF THE DRAINAGE CRITERIA MANUAL (DCM) VOLUME II AND IN ACCORDANCE WITH THE STORMWATER MANAGEMENT PLAN (SWMP). APPENDIX E CHECKLISTS AND PERMITS ADOPTED: 1/9/2006 REVISED: 8/11/2011 REVISION 4
- ALL TEMPORARY EROSION CONTROL FACILITIES INCLUDING BMPs AND ALL PERMANENT FACILITIES INTENDED TO CONTROL EROSION OF ANY EARTH DISTURBANCE OPERATIONS, SHALL BE INSTALLED AS DEFINED IN THE APPROVED PLANS, THE SWMP AND THE DCM VOLUME II AND MAINTAINED THROUGHOUT THE DURATION OF THE EARTH DISTURBANCE OPERATION.
- ANY EARTH DISTURBANCE SHALL BE CONDUCTED IN SUCH A MANNER SO AS TO EFFECTIVELY REDUCE ACCELERATED SOIL EROSION AND RESULTING SEDIMENTATION. ALL DISTURBANCES SHALL BE DESIGNED, CONSTRUCTED, AND COMPLETED SO THAT THE EXPOSED AREA OF ANY DISTURBED LAND SHALL BE LIMITED TO THE SHORTEST PRACTICAL PERIOD OF TIME.
- ANY TEMPORARY OR PERMANENT FACILITY DESIGNED AND CONSTRUCTED FOR THE CONVEYANCE OF STORMWATER AROUND, THROUGH, OR FROM THE EARTH DISTURBANCE AREA SHALL BE DESIGNED TO LIMIT THE DISCHARGE TO A NON-EROSIVE VELOCITY.
- CONCRETE WASH WATER SHALL BE CONTAINED AND DISPOSED OF IN ACCORDANCE WITH THE SWMP. NO WASH WATER SHALL BE DISCHARGED TO OR ALLOWED TO RUNOFF TO STATE WATERS, INCLUDING ANY SURFACE OR SUBSURFACE STORM DRAINAGE SYSTEM OR FACILITIES.
- EROSION CONTROL BLANKETING IS TO BE USED ON SLOPES STEEPER THAN 3:1.
- BUILDING, CONSTRUCTION, EXCAVATION, OR OTHER WASTE MATERIALS SHALL NOT BE TEMPORARILY PLACED OR STORED IN THE STREET, ALLEY, OR OTHER PUBLIC WAY, UNLESS IN ACCORDANCE WITH AN APPROVED TRAFFIC CONTROL PLAN. BMPs MAY BE REQUIRED BY EL PASO COUNTY ENGINEERING IF DEEMED NECESSARY, BASED ON SPECIFIC CONDITIONS AND CIRCUMSTANCES.
- VEHICLE TRACKING OF SOILS AND CONSTRUCTION DEBRIS OFF-SITE SHALL BE MINIMIZED. MATERIALS TRACKED OFFSITE SHALL BE CLEANED UP AND PROPERLY DISPOSED OF IMMEDIATELY.
- CONTRACTOR SHALL BE RESPONSIBLE FOR THE REMOVAL OF ALL WASTES FROM THE CONSTRUCTION SITE FOR DISPOSAL IN ACCORDANCE WITH LOCAL AND STATE REGULATORY REQUIREMENTS. NO CONSTRUCTION DEBRIS, TREE SLASH, BUILDING MATERIAL WASTES OR UNUSED BUILDING MATERIALS SHALL BE BURIED, DUMPED, OR DISCHARGED AT THE SITE.
- THE OWNER, SITE DEVELOPER, CONTRACTOR, AND/OR THEIR AUTHORIZED AGENTS SHALL BE RESPONSIBLE FOR THE REMOVAL OF ALL CONSTRUCTION DEBRIS, DIRT, TRASH, ROCK, SEDIMENT, AND SAND THAT MAY ACCUMULATE IN THE STORM SEWER OR OTHER DRAINAGE CONVEYANCE SYSTEM AND STORMWATER APPURTENANCES AS A RESULT OF SITE DEVELOPMENT.
- THE QUANTITY OF MATERIALS STORED ON THE PROJECT SITE SHALL BE LIMITED, AS MUCH AS PRACTICAL, TO THAT QUANTITY REQUIRED TO PERFORM THE WORK IN AN ORDERLY SEQUENCE. ALL MATERIALS STORED ONSITE SHALL BE STORED IN A NEAT, ORDERLY MANNER, IN THEIR ORIGINAL CONTAINERS, WITH ORIGINAL MANUFACTURER'S LABELS. APPENDIX E CHECKLISTS AND PERMITS ADOPTED: 1/9/2006 REVISED: 8/11/2011 REVISION 4
- NO CHEMICALS ARE TO BE USED BY THE CONTRACTOR, WHICH HAVE THE POTENTIAL TO BE RELEASED IN STORMWATER UNLESS PERMISSION FOR THE USE OF A SPECIFIC CHEMICAL IS GRANTED IN WRITING BY THE ECM ADMINISTRATOR. IN GRANTING THE USE OF SUCH CHEMICALS, SPECIAL CONDITIONS AND MONITORING MAY BE REQUIRED.
- BULK STORAGE STRUCTURES FOR PETROLEUM PRODUCTS AND OTHER CHEMICALS SHALL HAVE ADEQUATE PROTECTION SO AS TO CONTAIN ALL SPILLS AND PREVENT ANY SPILLED MATERIAL FROM ENTERING STATE WATERS, INCLUDING ANY SURFACE OR SUBSURFACE STORM DRAINAGE SYSTEM OR FACILITIES.
- NO PERSON SHALL CAUSE THE IMPEDIMENT OF STORMWATER FLOW IN THE FLOW LINE OF THE CURB AND GUTTER OR IN THE DITCHLINE.
- INDIVIDUALS SHALL COMPLY WITH THE "COLORADO WATER QUALITY CONTROL ACT" (TITLE 25, ARTICLE 8, CRS), AND THE "CLEAN WATER ACT" (33 USC 1344), IN ADDITION TO THE REQUIREMENTS INCLUDED IN THE DCM VOLUME II AND THE ECM APPENDIX I. ALL APPROPRIATE PERMITS MUST BE OBTAINED BY THE CONTRACTOR PRIOR TO CONSTRUCTION (NPDES, FLOODPLAIN, 404, FUGITIVE DUST, ETC.). IN THE EVENT OF CONFLICTS BETWEEN THESE REQUIREMENTS AND LAWS, RULES, OR REGULATIONS OF OTHER FEDERAL, STATE, OR COUNTY AGENCIES, THE MORE RESTRICTIVE LAWS, RULES, OR REGULATIONS SHALL APPLY.
- ALL CONSTRUCTION TRAFFIC MUST ENTER/EXIT THE SITE AT APPROVED CONSTRUCTION ACCESS POINTS.
- PRIOR TO ACTUAL CONSTRUCTION THE PERMITEE SHALL VERIFY THE LOCATION OF EXISTING UTILITIES.
- A WATER SOURCE SHALL BE AVAILABLE ON SITE DURING EARTHWORK OPERATIONS AND UTILIZED AS REQUIRED TO MINIMIZE DUST FROM EARTHWORK EQUIPMENT AND WIND.
- THE SOILS REPORT FOR THIS SITE WAS PREPARED BY FRONT RANGE GEOTECHNICAL. ADDITIONALLY, SOILS INFORMATION WAS DERIVED FROM THE NATURAL RESOURCES CONSERVATION SERVICE.
- AT LEAST TEN DAYS PRIOR TO THE ANTICIPATED START OF CONSTRUCTION, FOR PROJECTS THAT WILL DISTURB 1 ACRE OR MORE, THE OWNER OR OPERATOR OF CONSTRUCTION ACTIVITY SHALL SUBMIT A PERMIT APPLICATION FOR STORMWATER DISCHARGE TO THE COLORADO DEPARTMENT OF PUBLIC HEALTH AND ENVIRONMENT, WATER QUALITY DIVISION. THE APPLICATION CONTAINS CERTIFICATION OF COMPLETION OF A STORMWATER MANAGEMENT PLAN (SWMP), OF WHICH THIS GRADING AND EROSION CONTROL PLAN MAY BE A PART. FOR INFORMATION OR APPLICATION MATERIALS CONTACT: COLORADO DEPARTMENT OF PUBLIC HEALTH AND ENVIRONMENT WATER QUALITY CONTROL DIVISION WQCD - PERMITS 4300 CHERRY CREEK DRIVE SOUTH DENVER, CO 80246-1530 ATTN: PERMITS UNIT.

NOTES:

- SINCE THE ACTUAL DISTURBED AREA IS LESS THAN 1 ACRE (41,051 SF), A PERMIT WITH CDPHE IS NOT REQUIRED.
- SEE "STORM WATER POLLUTION PREVENTION PLAN", ORIGINAL ISSUE DATE: APRIL 2013, REVISION DATE(S): MAY 2015, MAY 2018, PREPARED BY THE SCOTTS COMPANY, HYPONEX CORPORATION # 1023, 3 ASSEMBLY COURT, FOUNTAIN, CO 80817, FOR THE INDUSTRIAL PERMIT AND POLLUTION PLAN IN PLACE FOR THIS SITE.



COMPUTER FILE INFORMATION				INDEX OF REVISIONS				<div>SITE DEVELOPMENT REVIEW SET 8/16/2018 9:09 AM</div> <div>CIVIL CD Civil Design LLC 2013 Stoneleigh Trail Monument, CO 80132 Phone: 719-271-1175 Email: cdxtwo@gmail.com</div>	GRADING & EROSION CONTROL COVER & NOTES		PROJECT NO./CODE	
CREATION DATE: 2018/05	INITIALS: CDCD								RICE RANCH EL PASO COUNTY, COLORADO		Sheet Subset Number	
LAST MODIFICATION DATE: 8/16/2018 9:09 AM	INITIALS:								DESIGNER:	STRUCTURE	Sheet Number GEC-1	
FULL PATH AND DRAWING NAME									DETAILER:	NUMBERS		
ACAD VER. 2013	SCALE:	UNITS: FEET							SHEET SUBSET:			

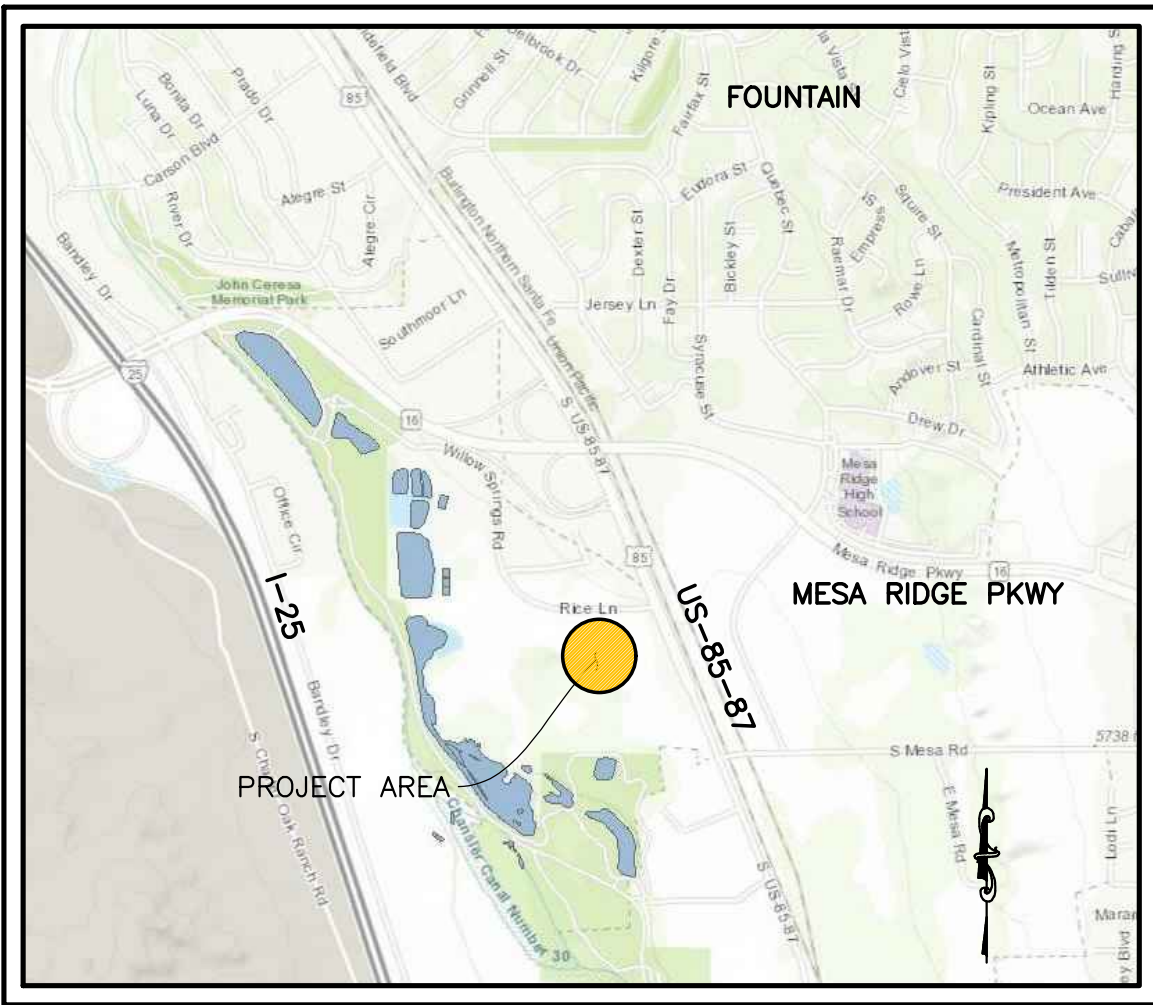
RICE RANCH

EL PASO COUNTY, COLORADO

GRADING & EROSION CONTROL PLANS

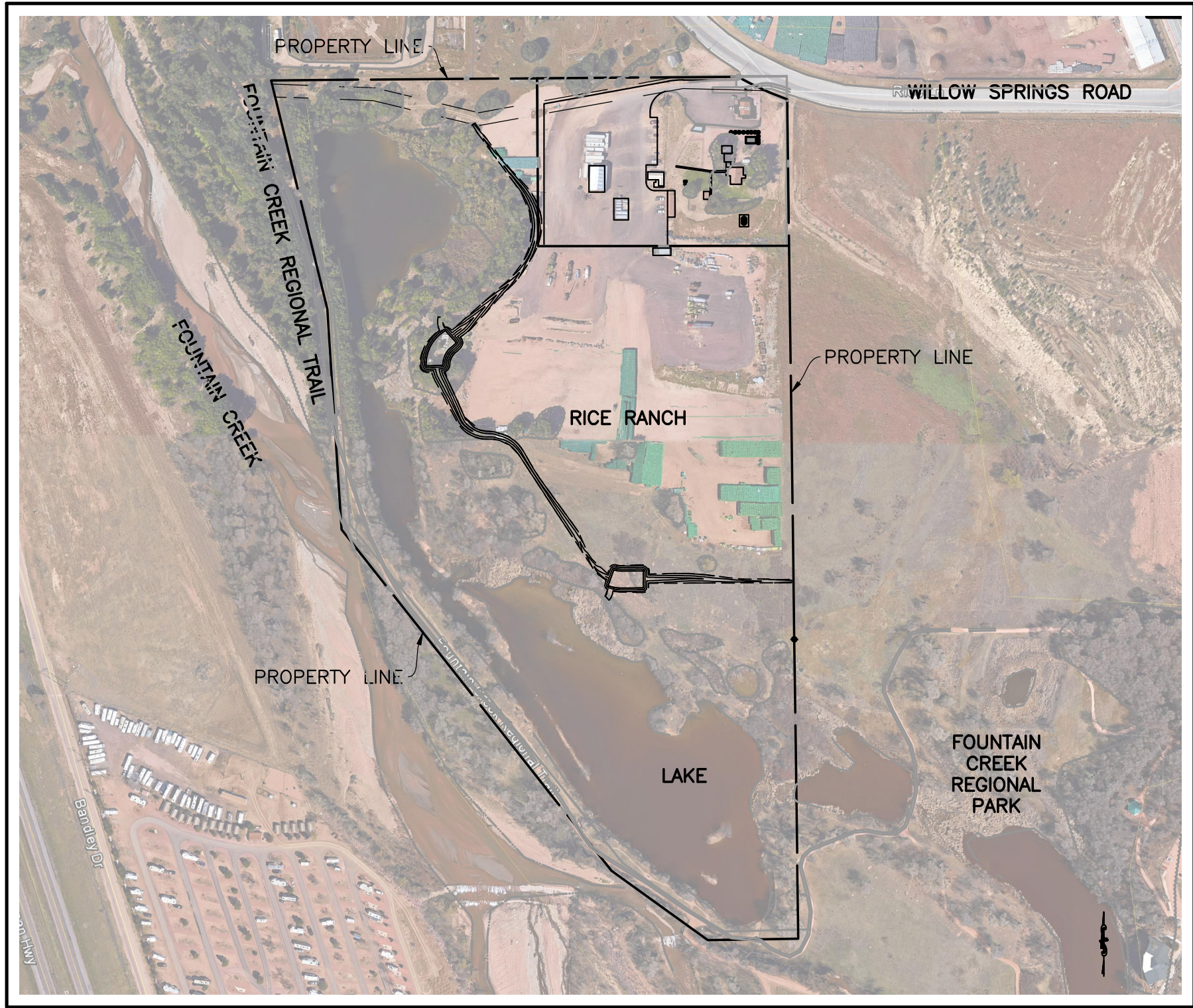
AUGUST 20, 2018

PPR-18-024



VICINITY MAP

NTS



LOCATION MAP

1"=300'

SIGNATURE BLOCK

ENGINEER'S STATEMENT:
THIS GRADING AND EROSION CONTROL PLAN WAS PREPARED UNDER MY DIRECTION AND SUPERVISION AND IS CORRECT TO THE BEST OF MY KNOWLEDGE AND BELIEF. SAID PLAN HAS BEEN PREPARED ACCORDING TO THE CRITERIA ESTABLISHED BY THE COUNTY FOR GRADING AND EROSION CONTROL PLANS. I ACCEPT RESPONSIBILITY FOR ANY LIABILITY CAUSED BY ANY NEGLIGENT ACTS, ERRORS OR OMISSIONS ON MY PART IN PREPARING THIS REPORT.

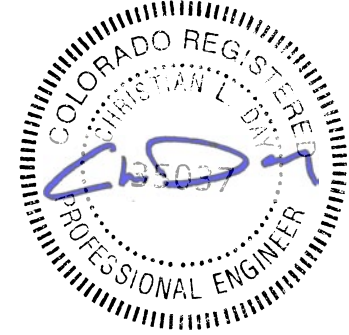
Christian L. Day PE 1/29/19
NAME DATE

OWNER'S STATEMENT:
THE OWNER WILL COMPLY WITH THE REQUIREMENTS OF THE GRADING AND EROSION CONTROL PLAN.

Jandra D. Cooley 03-25-19
NAME Jandra Cooley DATE
Manager,
Rice Ranch LLC

EL PASO COUNTY:
COUNTY PLAN REVIEW IS PROVIDED ONLY FOR GENERAL CONFORMANCE WITH COUNTY DESIGN CRITERIA. THE COUNTY IS NOT RESPONSIBLE FOR THE ACCURACY AND ADEQUACY OF THE DESIGN, DIMENSIONS, AND/OR ELEVATIONS WHICH SHALL BE CONFIRMED AT THE JOB SITE. THE COUNTY THROUGH THE APPROVAL OF THIS DOCUMENT ASSUMES NO RESPONSIBILITY FOR COMPLETENESS AND/OR ACCURACY OF THIS DOCUMENT. FILED IN ACCORDANCE WITH THE REQUIREMENTS OF THE EL PASO COUNTY LAND DEVELOPMENT CODE, DRAINAGE CRITERIA, AND ENGINEERING CRITERIA MANUAL AS AMENDED.

JENNIFER IRVINE, P.E. COUNTY ENGINEER/ECM ADMINISTRATOR DATE



OWNER/APPLICANT

RICE RANCH LLC
PO BOX 26571
COLORADO SPRINGS, COLORADO 80936
(719) 640-0232

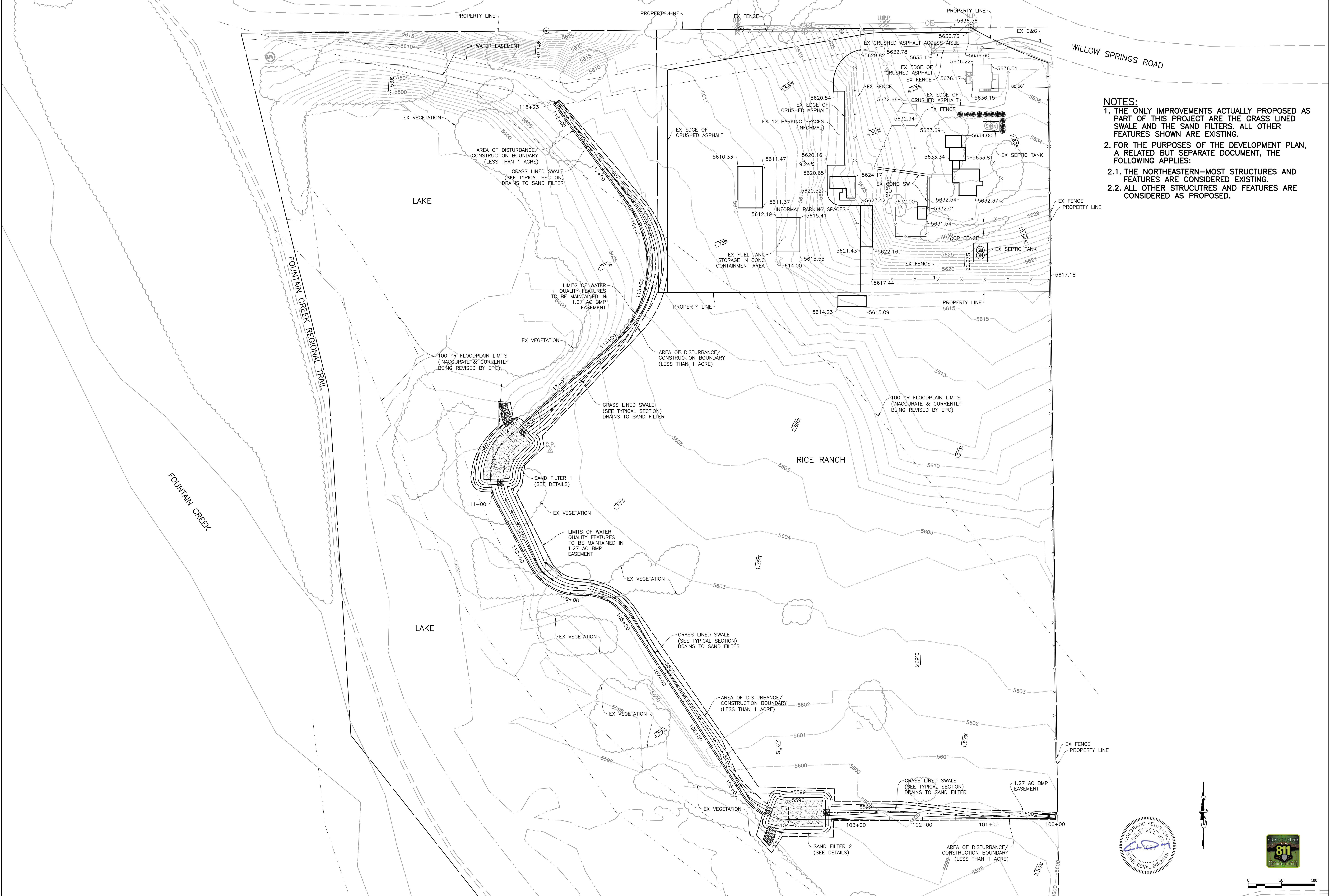
CONSULTANT/ENGINEER

CD CIVIL DESIGN LLC
2013 STONELEIGH TRAIL
MONUMENT, CO 80132
PHONE: 719-271-1175
EMAIL: CDXTWO@GMAIL.COM


SHEET INDEX

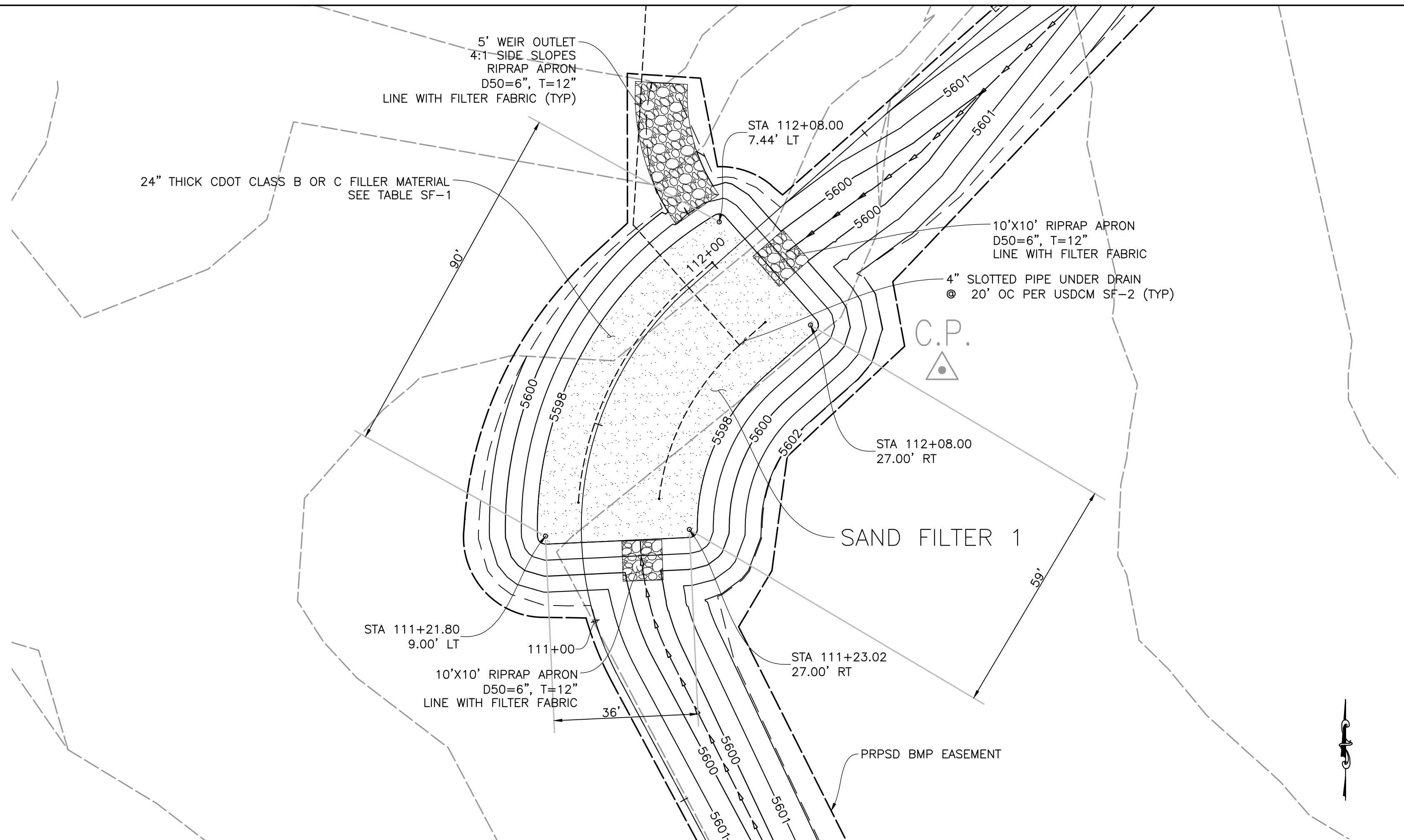
- GEC-1 GRADING & EROSION CONTROL COVER & NOTES
- GEC-2 GRADING AND EROSION CONTROL PLAN
- GEC-3 DETAILS
- GEC-4 DETAILS & COORDINATE GEOMETRY
- GEC-5 PROFILES

PRE-EXCAVATION CHECKLIST	
<input type="checkbox"/> GAS AND OTHER UTILITY LINES SHOWN ON CONSTRUCTION PLANS	
<input type="checkbox"/> UTILITY NOTIFICATION CENTER OF COLORADO (UNCC) - TO BE CALLED AT LEAST TWO (2) BUSINESS DAYS AHEAD	
<input type="checkbox"/> UTILITIES LOCATED & MARKED	
<input type="checkbox"/> EMPLOYEES BRIEFED ON MARKING AND COLOR CODES	
<input type="checkbox"/> EMPLOYEES TRAINED ON EXCAVATION AND SAFETY PROCEDURES FOR NATURAL GAS LINES	
<input type="checkbox"/> WHEN EXCAVATION APPROACHES GAS LINES, EMPLOYEES MUST EXPOSE LINES BY CAREFUL PROBING AND HAND DIGGING	
STANDARD UTILITY MARKING COLOR CODE	
NATURAL GAS - YELLOW	IF YOU DAMAGE A GAS LINE, SMELL GAS OR HAVE A GAS EMERGENCY, CALL THE GAS DEPARTMENT.
ELECTRIC - RED	
WATER - BLUE	
WASTEWATER - GREEN	
CALL TWO (2) BUSINESS DAYS BEFORE YOU DIG. FOR LOCATIONS MONDAY-FRIDAY FROM 7 A.M.-5 P.M. CALL 1-800-822-1987. FOR EMERGENCY LOCATIONS DURING NON-BUSINESS HOURS CALL 520-0022. (NO CHARGE FOR THIS SERVICE)	



- NOTES:**
1. THE ONLY IMPROVEMENTS ACTUALLY PROPOSED AS PART OF THIS PROJECT ARE THE GRASS LINED SWALE AND THE SAND FILTERS. ALL OTHER FEATURES SHOWN ARE EXISTING.
 2. FOR THE PURPOSES OF THE DEVELOPMENT PLAN, A RELATED BUT SEPARATE DOCUMENT, THE FOLLOWING APPLIES:
 - 2.1. THE NORTHEASTERN-MOST STRUCTURES AND FEATURES ARE CONSIDERED EXISTING.
 - 2.2. ALL OTHER STRUCTURES AND FEATURES ARE CONSIDERED AS PROPOSED.

COMPUTER FILE INFORMATION		INDEX OF REVISIONS		SITE DEVELOPMENT REVIEW SET 11/26/2018 3:23 PM		GRADING & EROSION CONTROL PLAN		PROJECT	
CREATION DATE: 2018/05	INITIALS: CDGD	00				RICE RANCH EL PASO COUNTY, COLORADO		NO./CODE	
LAST MODIFICATION DATE: 11/26/2018 3:23 PM	INITIALS:	00				DESIGNER:	STRUCTURE	Sheet Subset Number	
FULL PATH AND DRAWING NAME		00				DETAILER:	NUMBERS	Sheet Number	
ACAD VER: 2013	SCALE:	UNITS: FEET	SCALE 1"=50'			SHEET SUBSET:		GEC-2	



DETAIL-SAND FILTER 1

Table SF-1. Gradation specifications for CDOT Class B or C filter material
(Source: CDOT Table 703-7)

Sieve Size	CDOT Class B filter material	CDOT Class C filter material
	Mass Percent Passing	Square Mesh Sieves
37.5 mm (1.5")	100	
19.0 mm (0.75")		100
4.75 mm (No.4)	20-60	60-100
1.18 um (No. 16)	10-30	
300 um (No. 50)	0-10	10-30
150 um (No. 100)		0-10
75 um (No. 200)	0-3	0-3

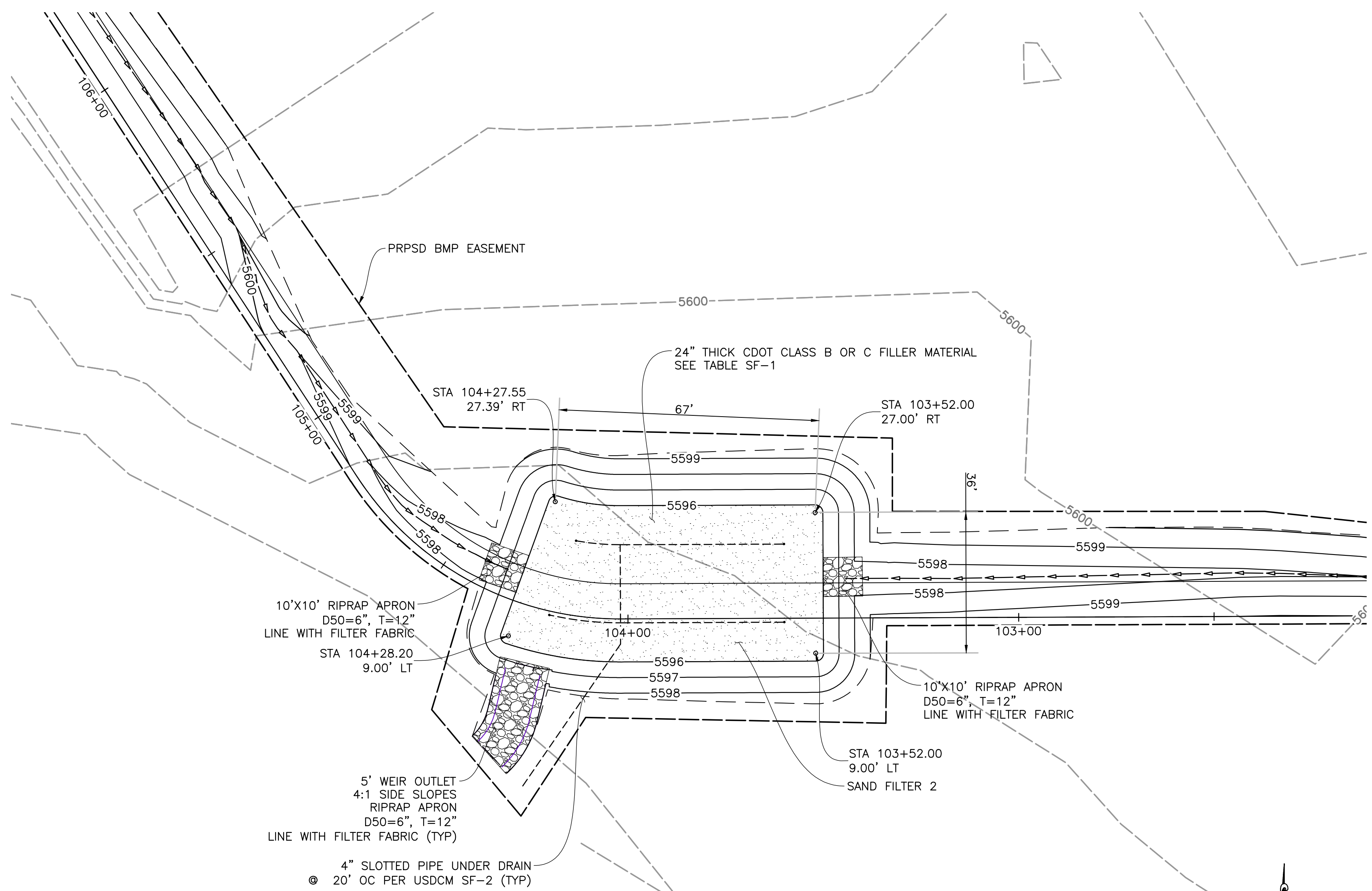
Table SF-2. Dimensions for Slotted Pipe¹

Pipe Size	Slot Length	Maximum Slot Width	Slot Centers	Open Area (per foot)
4"	1-1/16"	0.032"	0.413"	1.90 in ²
6"	1-3/8"	0.032"	0.516"	1.98 in ²

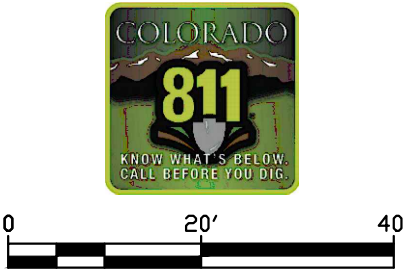
¹ Pipe must conform to requirements of ASTM designation F949. There shall be no evidence of splitting, cracking, or breaking when the pipe is tested per ASTM test method D2412 in accordance with F949 section 7.5 and ASTM F794 section 8.5. Contech A-2000 slotted pipe (or equal).

NOTES:

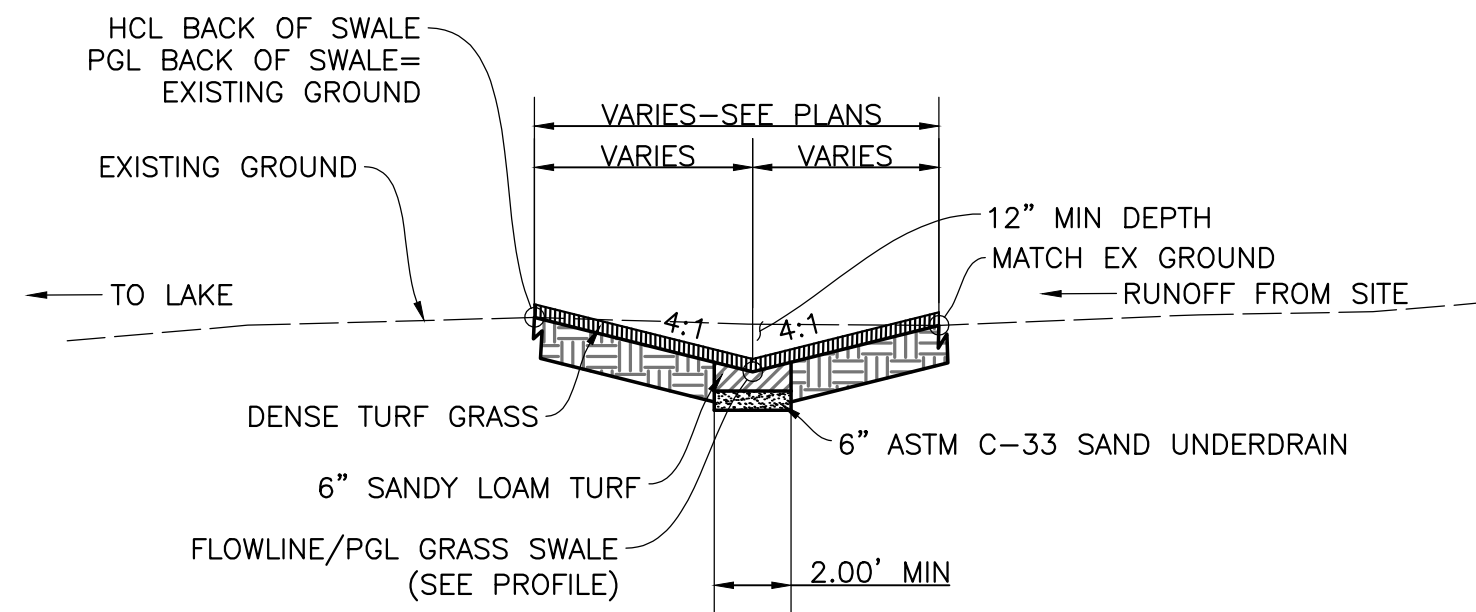
- FURTHER SAND FILTER DETAILS AND SPECIFICATIONS CAN BE FOUND IN TO URBAN STORM DRAINAGE CRITERIA MANUAL (USDCM) VOLUME 3, FACT SHEET T-06.
- FOR DEVELOPMENT PLAN/HYDROLOGIC PURPOSES, STRUCTURES AND IMPROVEMENTS SHOWN OTHER THAN THE NORTHEASTERN-MOST STRUCTURES ARE NOT CONSIDERED IN THE EXISTING CONDITION.



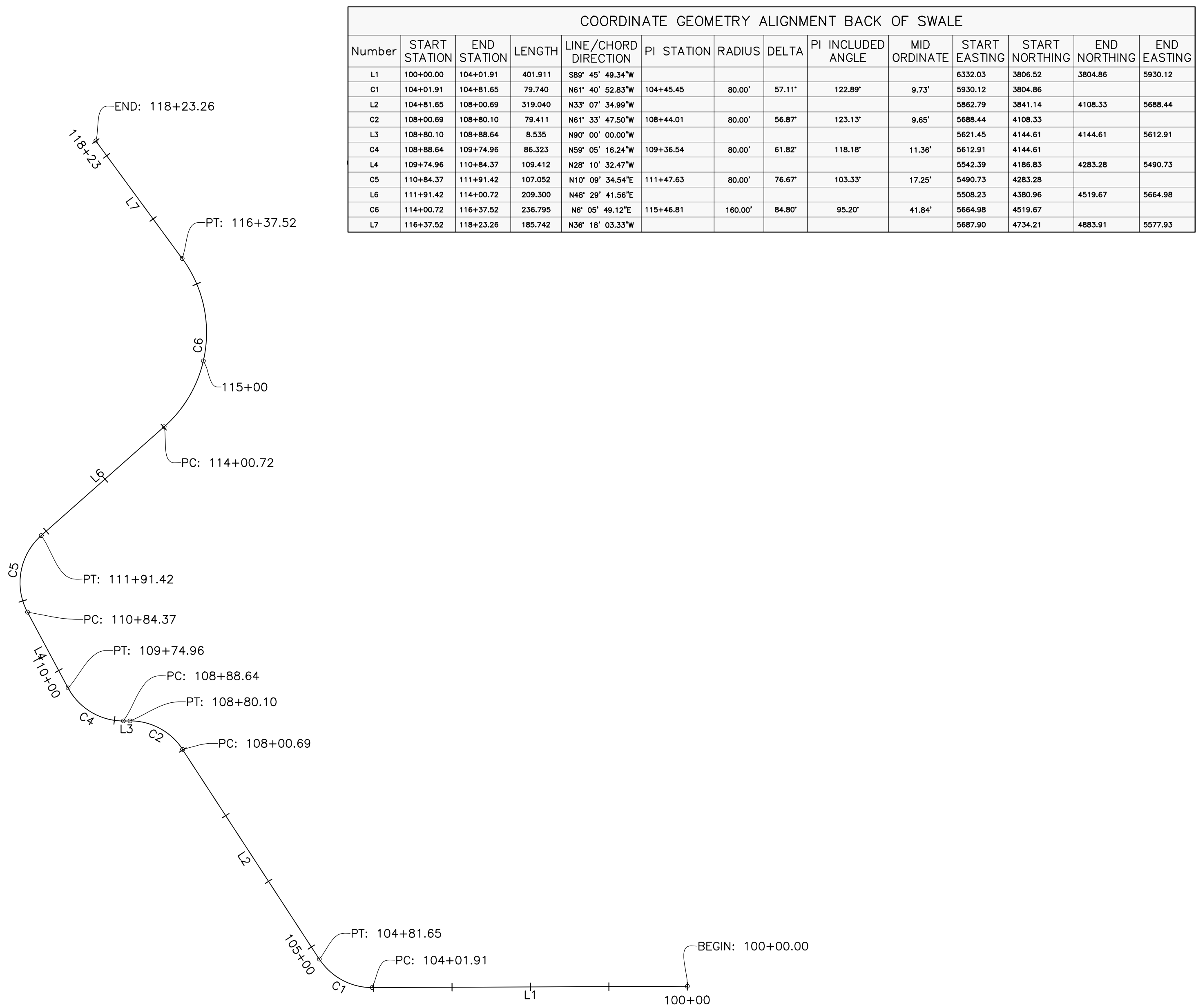
DETAIL-SAND FILTER 2



COMPUTER FILE INFORMATION				INDEX OF REVISIONS				SITE DEVELOPMENT REVIEW SET				SAND FILTER DETAILS				PROJECT	
CREATION DATE: 2018/05 INITIALS: CDCD								8/15/2018 8:21 PM				RICE RANCH EL PASO COUNTY, COLORADO				NO./CODE	
LAST MODIFICATION DATE: 8/15/2018 8:21 PM INITIALS:												DESIGNER:				STRUCTURE NUMBERS	
FULL PATH AND DRAWING NAME												DETAILER:				Sheet Subset Number	
ACAD VER. 2013 SCALE: UNITS: FEET SCALE 1"=20'												SHEET SUBSET:				Sheet Number	
																GEC-3	

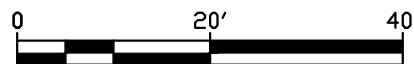


TYPICAL SECTION
GRASS LINED SWALE

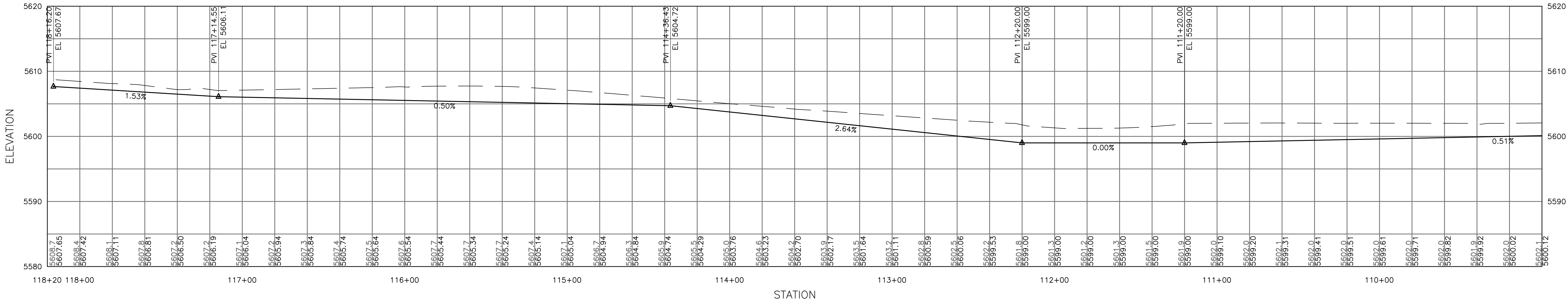


COORDINATE GEOMETRY ALIGNMENT BACK OF SWALE													
Number	START STATION	END STATION	LENGTH	LINE/CHORD DIRECTION	PI STATION	RADIUS	DELTA	PI INCLUDED ANGLE	MID ORDINATE	START EASTING	START NORTHING	END NORTHING	END EASTING
L1	100+00.00	104+01.91	401.911	S89° 40' 49.34"W	104+45.45	80.00'	57.11°	122.89'	9.73'	8332.03	3804.52	3804.86	3930.12
C1	104+01.91	104+81.65	79.740	N61° 40' 52.83"W									
L2	104+81.65	108+00.69	319.040	N33° 07' 34.99"W	108+44.01	80.00'	56.87°	123.13°	9.85'	5862.79	3841.14	4108.33	5688.44
C2	108+00.69	108+80.10	79.411	N61° 33' 47.50"W									
L3	108+80.10	108+88.64	8.535	N90° 00' 00.00"W	109+36.54	80.00'	61.82°	118.18°	11.36'	5621.45	4144.61	4144.61	5612.91
C4	108+88.64	109+74.96	86.323	N59° 05' 16.24"W									
L4	109+74.96	110+84.37	109.412	N08° 10' 32.47"W	111+47.63	80.00'	76.67°	103.33°	17.25'	5542.59	4188.83	4283.28	5490.73
C5	110+84.37	111+91.42	107.052	N107° 09' 34.94"E									
L6	111+91.42	116+37.52	209.300	N48° 29' 41.58"E	115+46.81	160.00'	84.80°	95.20°	41.84'	5508.23	4380.96	4519.67	5664.98
C6	114+00.72	116+37.52	236.795	N0° 05' 49.12"E									
L7	116+37.52	118+23.26	185.742	N36° 18' 03.33"W									

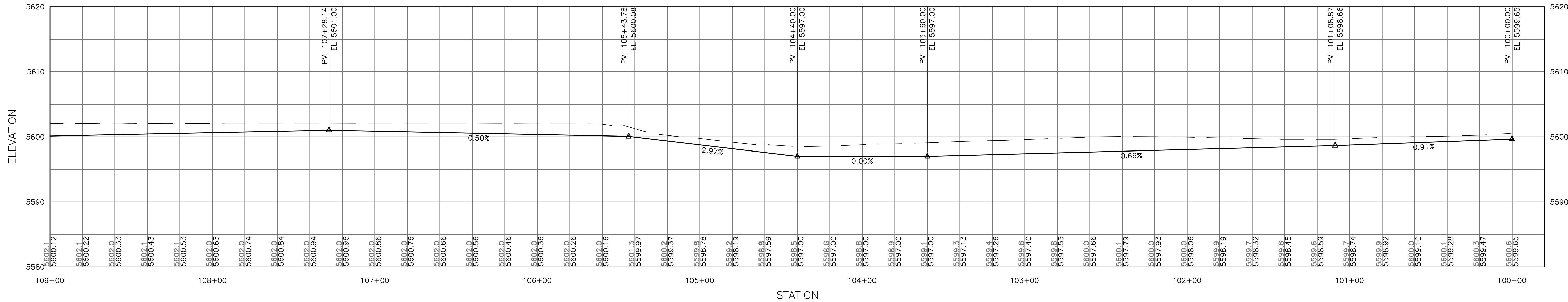
COORDINATE GEOMETRY—BACK OF SWALE



COMPUTER FILE INFORMATION				INDEX OF REVISIONS				<div><div></div><div>SITE DEVELOPMENT REVIEW SET 8/15/2018 8:12 PM</div></div>				<div><div><div></div><div>CD CIVIL</div><div>CD Civil Design LLC 2013 Stonehenge Trail #2013 Stonehenge Trail Albuquerque, NM 87110 Phone: (505) 211-1111 Email: cdhcad@gmail.com</div></div><div></div></div>				DETAILS & COORDINATE GEOMETRY				PROJECT		
CREATION DATE: 2018/05 INITIALS: CDCD				<div><div></div><div></div><div></div><div></div><div></div></div>													RICE RANCH EL PASO COUNTY, COLORADO				NO./CODE	
LAST MODIFICATION DATE: 8/15/2018 8:12 PM INITIALS:																	DESIGNER:				Sheet Subset Number	
FULL PATH AND DRAWING NAME																	DETAILER:				Sheet Number GEC-4	
ACAD VER. 2013 SCALE: UNITS: FEET SCALE 1"=##'												SHEET SUBSET:										



PROFILE GRASS SWALE FLOWLINE



PROFILE GRASS SWALE FLOWLINE

COMPUTER FILE INFORMATION		INDEX OF REVISIONS		SITE DEVELOPMENT REVIEW SET 8/10/2018 2:20 PM		PROFILES		PROJECT	
CREATION DATE: 2018/05	INITIALS: CDCD					RICE RANCH EL PASO COUNTY, COLORADO		NO./CODE	
LAST MODIFICATION DATE: 8/10/2018 2:20 PM	INITIALS:					DESIGNER:	STRUCTURE	Sheet Subset Number	
FULL PATH AND DRAWING NAME						DETAILER:	NUMBERS	Sheet Number	
ACAD VER. 2013	SCALE:	UNITS: FEET	SCALE 1"=##'			SHEET SUBSET:		GEC-5	