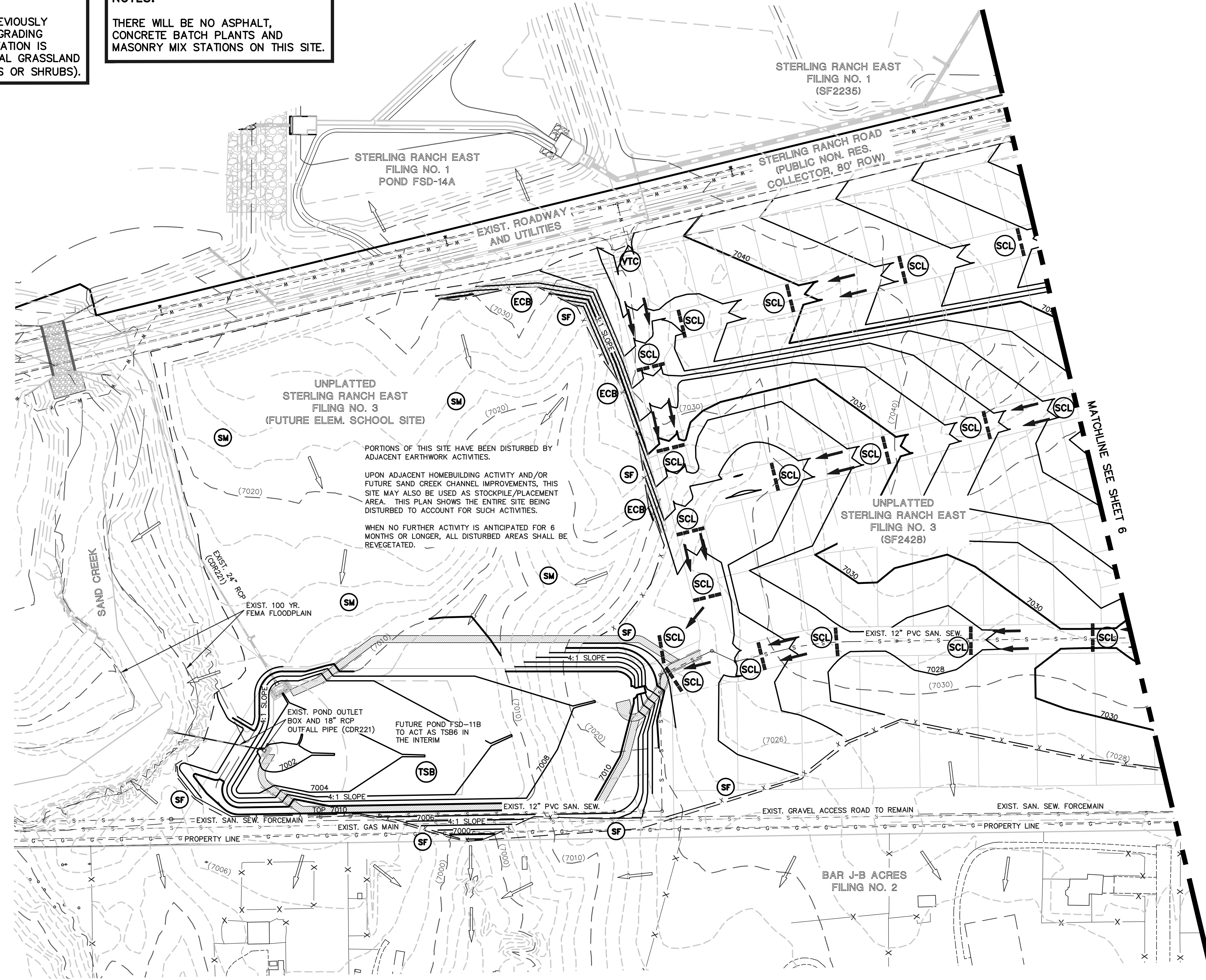


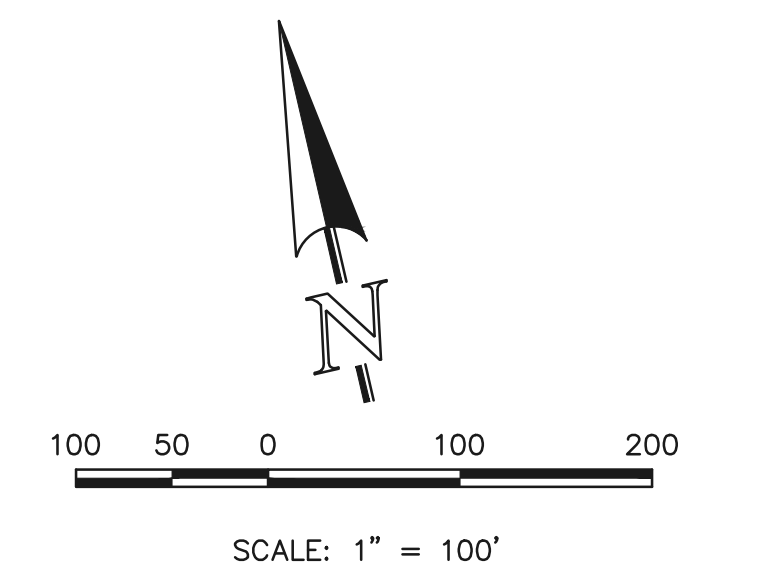
NOTES:
 THE SITE HAS BEEN PREVIOUSLY DISTURBED WITH MASS GRADING OPERATIONS AND VEGETATION IS SPARSE AND OF NATURAL GRASSLAND CONSISTENCY (NO TREES OR SHRUBS).

NOTES:
 THERE WILL BE NO ASPHALT, CONCRETE BATCH PLANTS AND MASONRY MIX STATIONS ON THIS SITE.



PORTIONS OF THIS SITE HAVE BEEN DISTURBED BY ADJACENT EARTHWORK ACTIVITIES.
 UPON ADJACENT HOMEBUILDING ACTIVITY AND/OR FUTURE SAND CREEK CHANNEL IMPROVEMENTS, THIS SITE MAY ALSO BE USED AS STOCKPILE/PLACEMENT AREA. THIS PLAN SHOWS THE ENTIRE SITE BEING DISTURBED TO ACCOUNT FOR SUCH ACTIVITIES.
 WHEN NO FURTHER ACTIVITY IS ANTICIPATED FOR 6 MONTHS OR LONGER, ALL DISTURBED AREAS SHALL BE REVEGETATED.

NOTE:
 THIS OFF-SITE GRADING WITHIN STERLING RANCH EAST FILING NO. 3 AND NO. 5 IS SHOWN AS A PART OF THIS GEC PLAN AS REQUIRED TO PROVIDE MATERIAL BORROW/ STOCKPILE AREAS AND UTILITY CORRIDORS FOR THE VILLAGES DEVELOPMENT.
 FINAL GEC PLANS FOR EACH OF THESE AREAS WILL BE REQUIRED PRIOR TO FORMAL DEVELOPMENT OF THESE FINAL PLATS.



- CCM PHASING**
- (TSB) TEMPORARY SEDIMENT BASIN (INSTALLED DURING INITIAL PHASE WITH CONTINUED MAINTENANCE THROUGH INTERIM PHASE)
 - x SF SILT FENCE (INSTALL PRIOR TO INITIAL PHASE WITH CONTINUED MAINTENANCE DURING INTERIM AND VERTICAL PHASES)
 - SCL SEDIMENT CONTROL LOG (INSTALLED DURING INTERIM PHASE WITH CONTINUED MAINTENANCE DURING INTERIM AND VERTICAL PHASES)
 - VTC VEHICLE TRACKING CONTROL (INSTALL PRIOR TO INITIAL PHASE WITH CONTINUED MAINTENANCE THROUGH INTERIM, VERTICAL PHASE OR SITE PAVING)
 - ECB EROSION CONTROL BLANKET (INSTALL AS NEEDED ON SLOPES 3:1 OR GREATER DURING INTERIM PHASE WITH CONTINUED MAINTENANCE THROUGH VERTICAL PHASE)
 - MU MULCHING (INSTALL DURING INTERIM PHASE WITH CONTINUED MAINTENANCE THROUGH VERTICAL PHASE)
 - TS TEMPORARY SEEDING (INSTALL DURING INTERIM PHASE WITH CONTINUED MAINTENANCE THROUGH VERTICAL PHASE)

- LEGEND**
- (---) (7700) --- EXISTING CONTOUR
 - 7700 --- PROPOSED CONTOUR
 - PROPOSED LIMITS OF GRADING/ CONSTRUCTION SITE BOUNDARY
 - BOUNDARY/R.O.W. LINE
 - EXISTING FLOW DIRECTION
 - PROPOSED FLOW

48 HOURS BEFORE YOU DIG, CALL UTILITY LOCATORS **811**
 UTILITY NOTIFICATION CENTER OF COLORADO ITS THE LAW
 THE LOCATIONS OF EXISTING UNDERGROUND UTILITIES ARE SHOWN IN AN APPROXIMATE WAY ONLY. THE CONTRACTOR SHALL DETERMINE THE EXACT LOCATION OF ALL EXISTING UTILITIES BEFORE COMMENCING WORK. THE CONTRACTOR SHALL BE FULLY RESPONSIBLE FOR ANY AND ALL DAMAGES WHICH MIGHT BE CAUSED BY HIS FAILURE TO EXACTLY LOCATE AND PRESERVE ANY AND ALL UNDERGROUND UTILITIES.

NO.	REVISION	DATE
1	ADJUSTED DISTURBANCE AREA FOR SCHOOL SITE	4/20/26

REVIEW: PREPARED UNDER MY DIRECT SUPERVISION FOR AND ON BEHALF OF CLASSIC CONSULTING ENGINEERS AND SURVEYORS, LLC
 MARC A. WHORTON, #37155, DATE 4/21/2026



PCD FILE # PUD SP226

VILLAGES AT STERLING RANCH

EARLY GRADING AND EROSION CONTROL PLAN
 OFF-SITE DISTURBANCE AREA

DESIGNED BY	MAW	SCALE	DATE	1/9/25
DRAWN BY	MAW	(H) 1" = 100'	SHEET	7 OF 9
CHECKED BY		(V) 1" = N/A	JOB NO.	1183.26

N:\118326\DRAWINGS\CONSTRUCT\CON\EROD\Early GEC Plans\118326_011-017-SITE.dwg, 4/21/2026 12:54:37 PM, 1:1