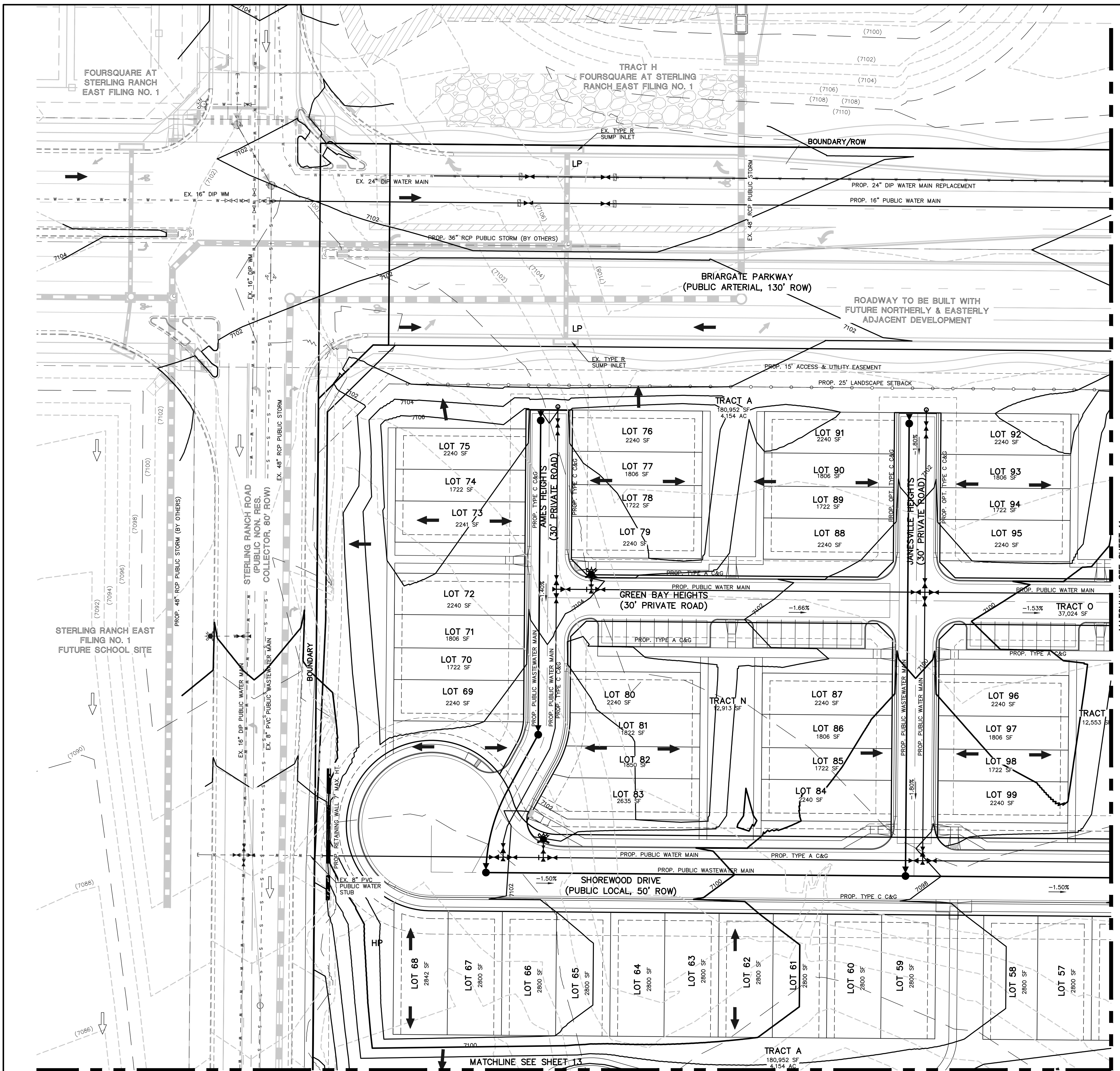
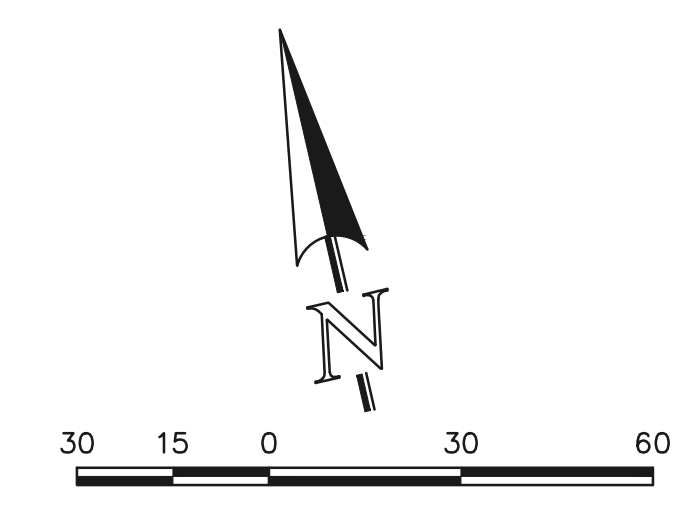


- LEGEND**
- (6770) --- EXISTING CONTOUR
 - 6770 — PROPOSED CONTOUR
 - - - - - BOUNDARY/FILING LINE
 - EXISTING FLOW DIRECTION
 - ➔ PROPOSED FLOW DIRECTION
 - PROPOSED INLET
 - ▬▬▬▬▬ PROPOSED STORM PIPE
 - ▬▬▬▬▬ EXISTING STORM PIPE
 - HP PROPOSED HIGH POINT
 - LP PROPOSED LOW POINT



MATCHLINE SEE SHEET 11



SCALE: 1" = 30'
EL PASO COUNTY FILE NO.: PUD SP-22-006

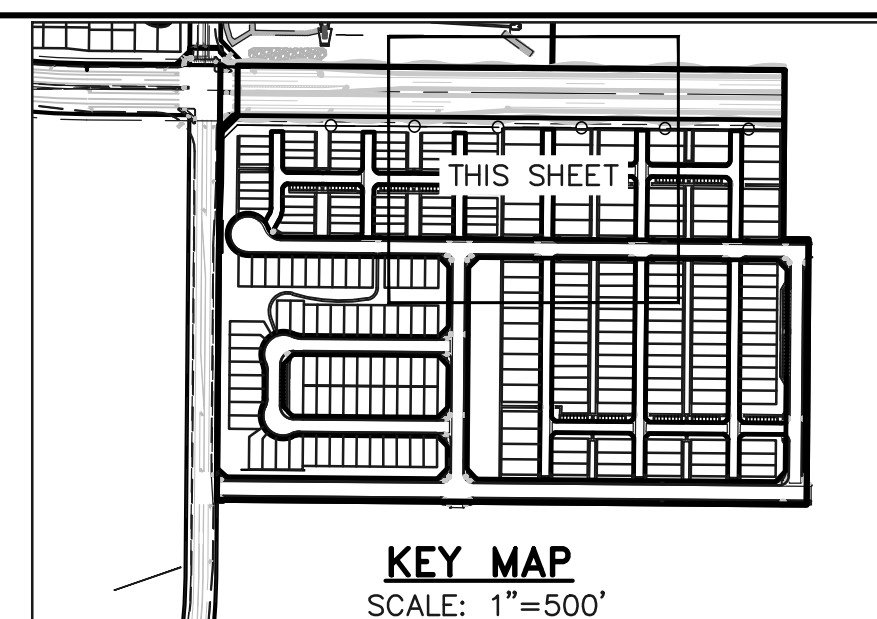
619 N. Cascade Avenue, Suite 200
Colorado Springs, Colorado 80903
(719) 785-0790
(719) 785-0799 (Fax)

VILLAGES AT STERLING RANCH

PRELIMINARY GRADING AND UTILITY PLAN

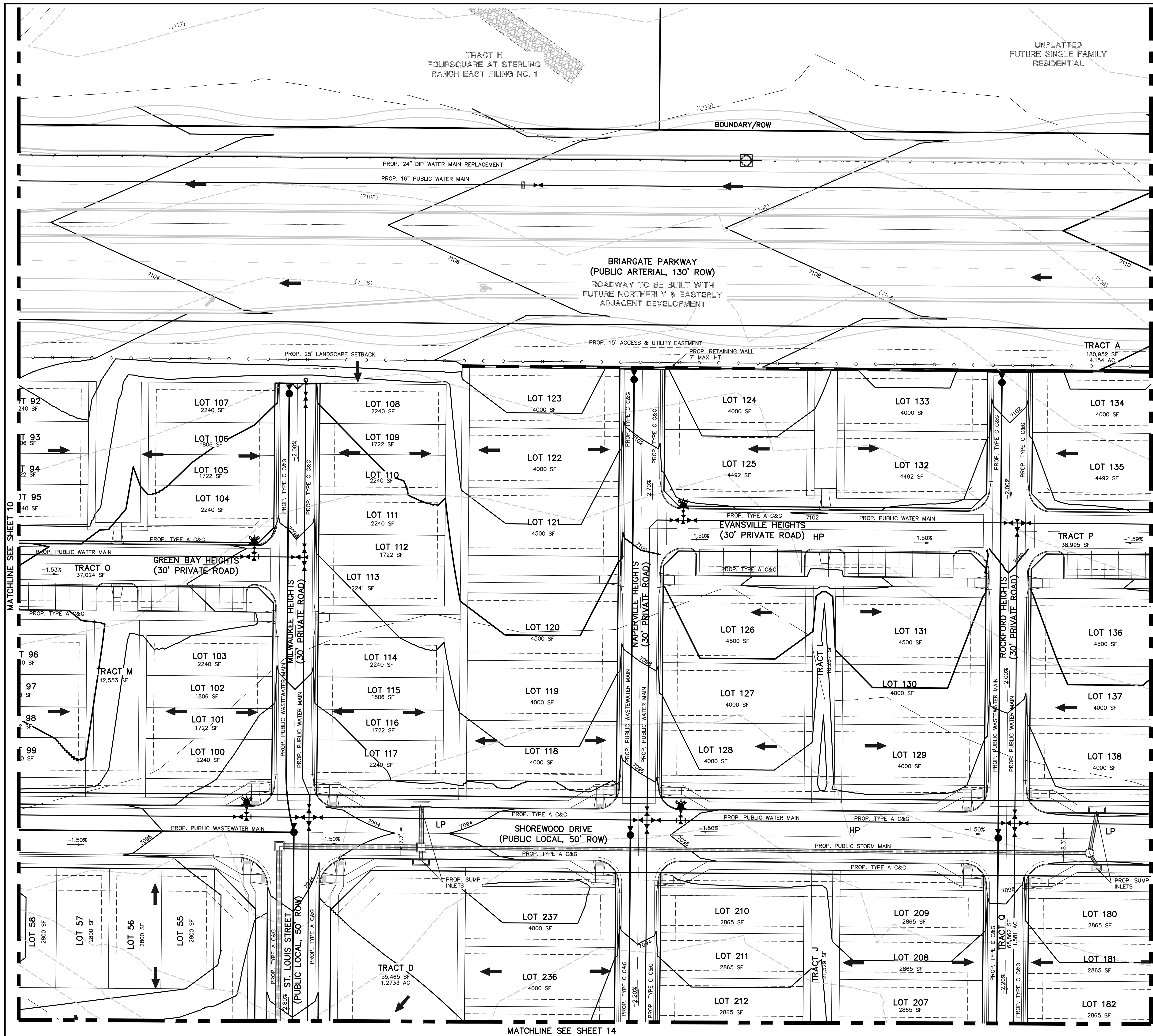
DESIGNED BY	EAS	SCALE	DATE	11/27/2023
DRAWN BY	EAS	(H) 1" = 30'	SHEET	10 OF 27
CHECKED BY		(V) 1" = N/A	JOB NO.	1183.26

N:\18326\DRAWINGS\DEVELOPMENT\18326_PU-PG-10.dwg, 5/20/2024, 2:52:53 PM, 1:1



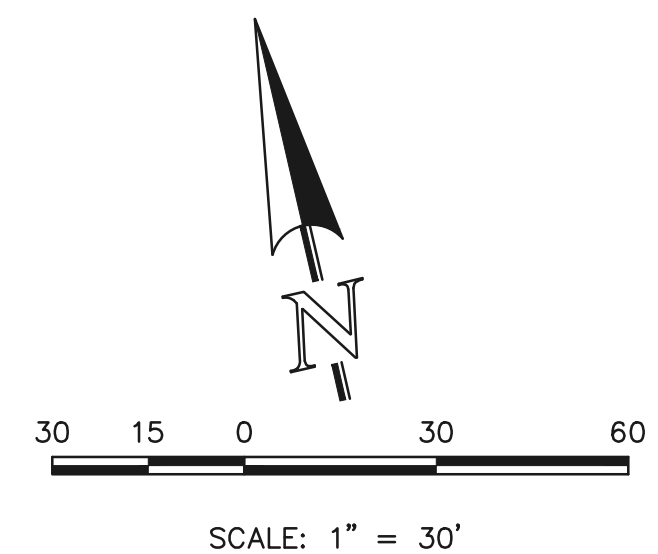
LEGEND

- EXISTING CONTOUR
- PROPOSED CONTOUR
- BOUNDARY/FILING LINE
- EXISTING FLOW DIRECTION
- PROPOSED FLOW DIRECTION
- PROPOSED INLET
- PROPOSED STORM PIPE
- EXISTING STORM PIPE
- HP** PROPOSED HIGH POINT
- LP** PROPOSED LOW POINT



MATCHLINE SEE SHEET 12

MATCHLINE SEE SHEET 10



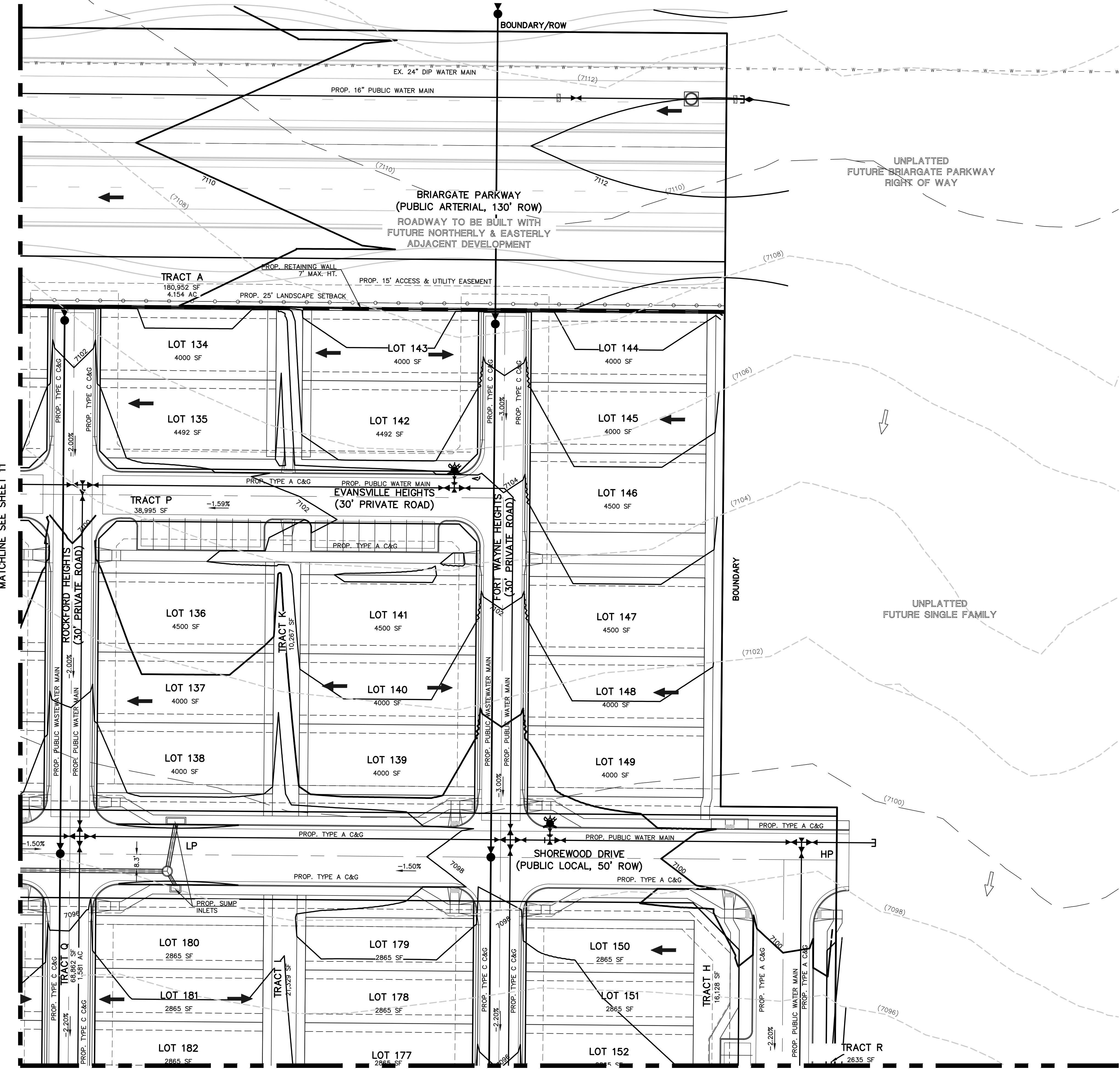
EL PASO COUNTY FILE NO.: PUD SP-22-006

	VILLAGES AT STERLING RANCH		
	PRELIMINARY GRADING AND UTILITY PLAN		
DESIGNED BY	EAS	SCALE	DATE 11/27/2023
DRAWN BY	EAS	(H) 1" = 30'	SHEET 11 OF 27
CHECKED BY	(V) 1" = N/A	JOB NO.	1183.26

619 N. Cascade Avenue, Suite 200 (719) 785-0790
 Colorado Springs, Colorado 80903 (719) 785-0799 (Fax)

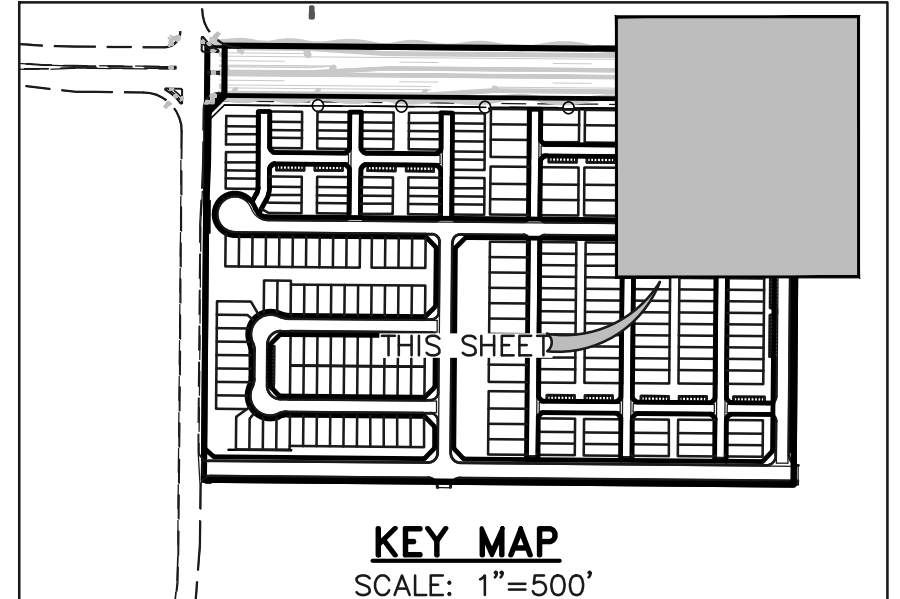
N:\18326\DRAWINGS\DEVELOPMENT\18326_PU-PG-11.dwg, 5/20/2024, 2:35:26 PM, 1/1

UNPLATTED
FUTURE SINGLE FAMILY
RESIDENTIAL

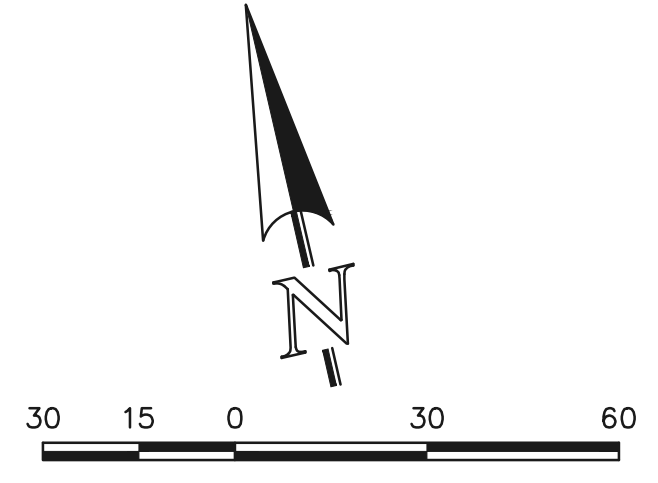


MATCHLINE SEE SHEET 11

MATCHLINE SEE SHEET 12



- LEGEND**
- (6770) EXISTING CONTOUR
 - 6770 PROPOSED CONTOUR
 - BOUNDARY/FILING LINE
 - EXISTING FLOW DIRECTION
 - PROPOSED FLOW DIRECTION
 - PROPOSED INLET
 - PROPOSED STORM PIPE
 - EXISTING STORM PIPE
 - HP PROPOSED HIGH POINT
 - LP PROPOSED LOW POINT

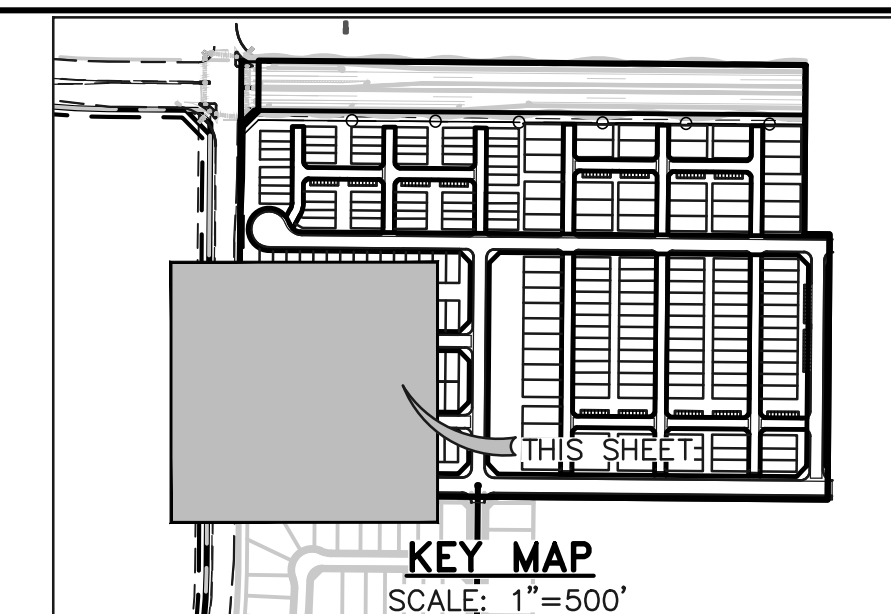


EL PASO COUNTY FILE NO.: PUD SP-22-006

		VILLAGES AT STERLING RANCH	
		PRELIMINARY GRADING AND UTILITY PLAN	
DESIGNED BY	EAS	SCALE	DATE 11/27/2023
DRAWN BY	EAS	(H) 1"= 30'	SHEET 12 OF 27
CHECKED BY		(V) 1"= N/A	JOB NO. 1183.26

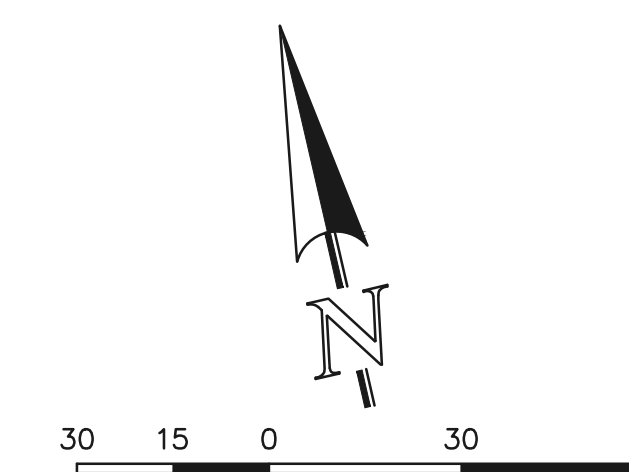
619 N. Cascade Avenue, Suite 200 (719) 785-0790
Colorado Springs, Colorado 80903 (719) 785-0799 (Fax)

N:\18326\DRAWINGS\DEVELOPMENT\18326_PU-PG-12.dwg, 5/20/2024, 2:54:30 PM, 1:1



LEGEND

- (6770) EXISTING CONTOUR
- 6770 PROPOSED CONTOUR
- BOUNDARY/FILING LINE
- EXISTING FLOW DIRECTION
- PROPOSED FLOW DIRECTION
- PROPOSED INLET
- PROPOSED STORM PIPE
- EXISTING STORM PIPE
- HP PROPOSED HIGH POINT
- LP PROPOSED LOW POINT

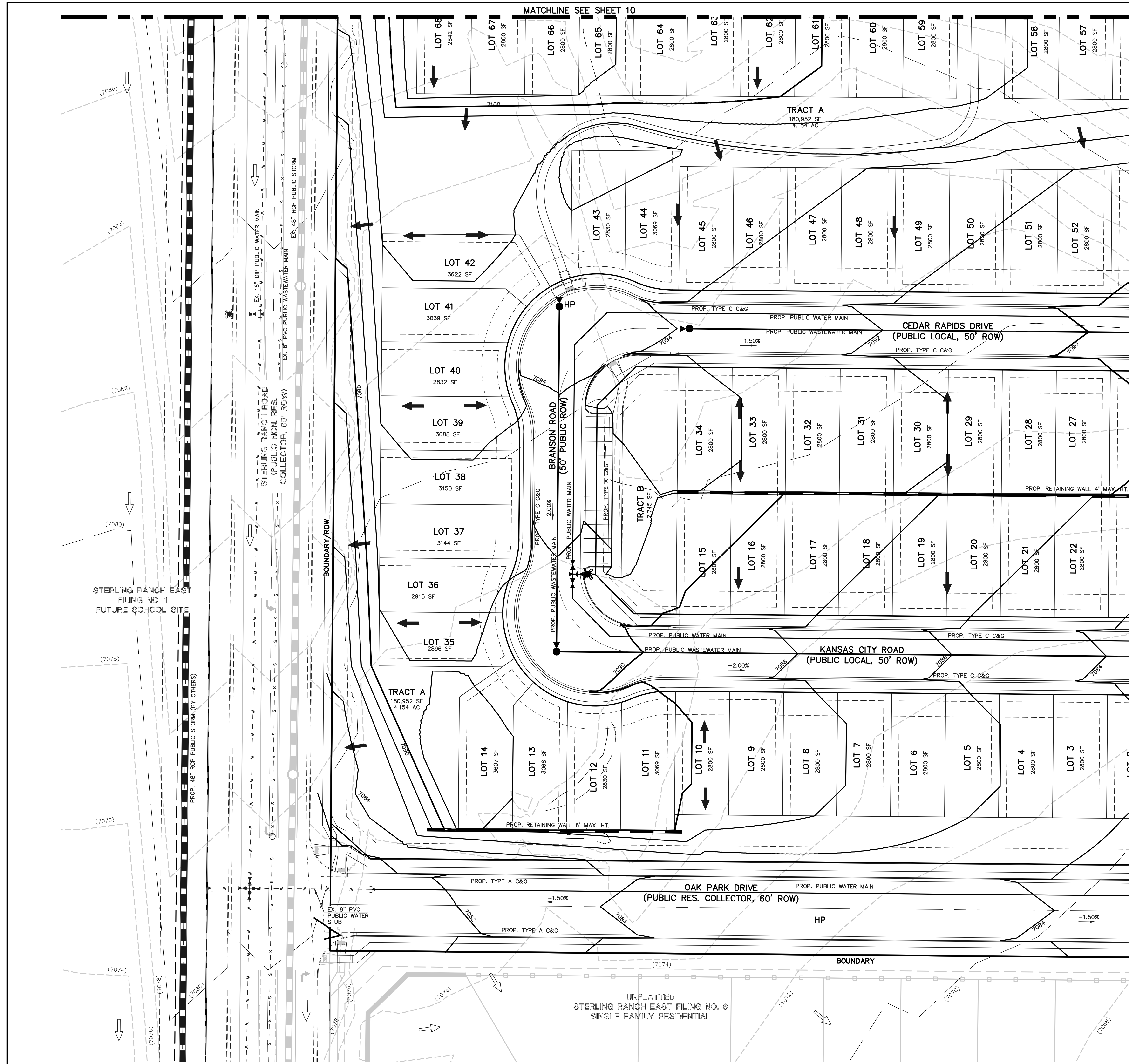


EL PASO COUNTY FILE NO.: PUD SP-22-006

VILLAGES AT STERLING RANCH

PRELIMINARY GRADING AND UTILITY PLAN

DESIGNED BY	EAS	SCALE	DATE	11/27/2023
DRAWN BY	EAS	(H) 1" = 30'	SHEET	13 OF 27
CHECKED BY		(V) 1" = N/A	JOB NO.	1183.26

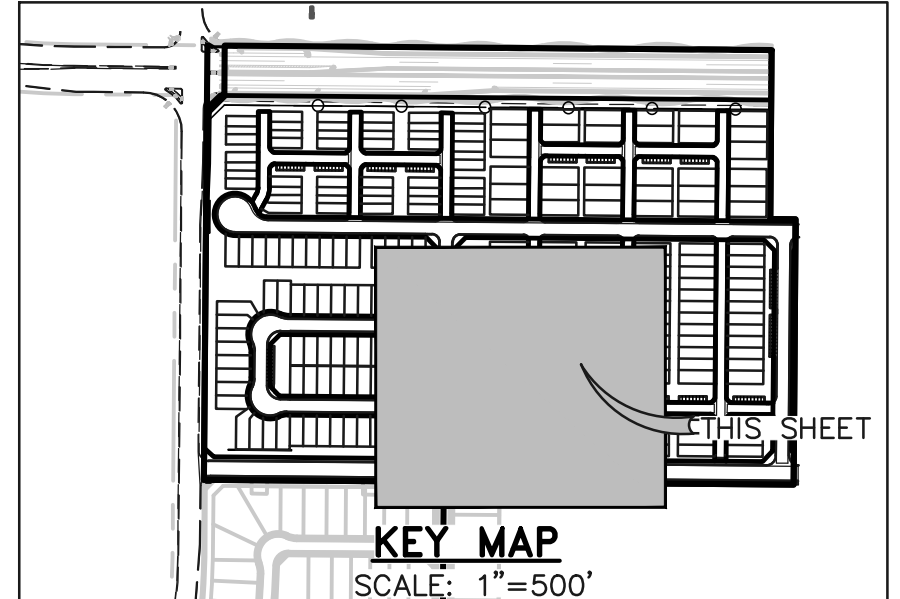
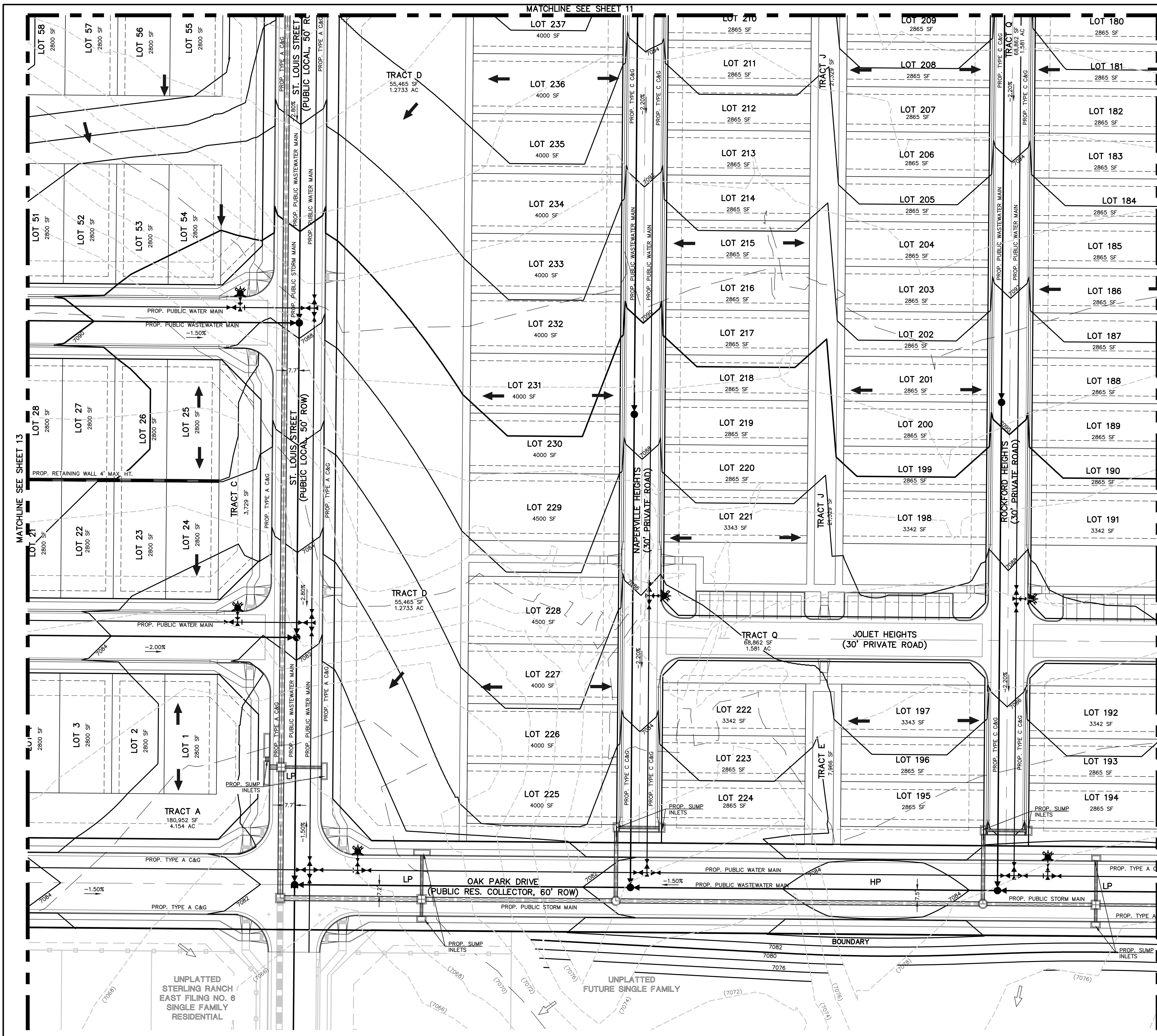


MATCHLINE SEE SHEET 10

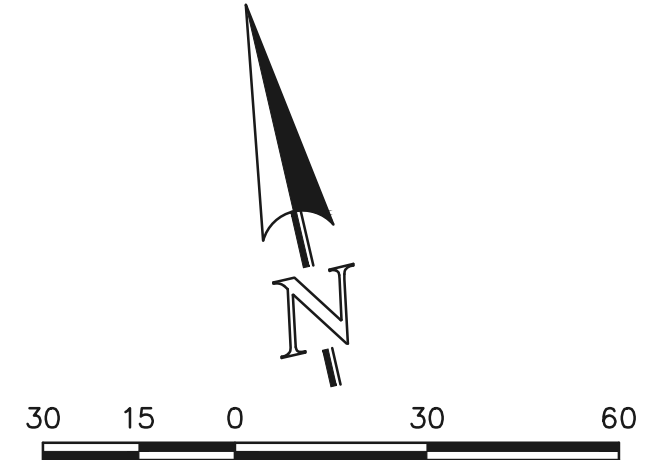
MATCHLINE SEE SHEET 14

UNPLATTED STERLING RANCH EAST FILING NO. 8 SINGLE FAMILY RESIDENTIAL

N:\18326\DRAWINGS\DEVELOPMENT\18326_PU-PG-13.dwg, 5/20/2024, 2:35:39 PM, 1:1



- LEGEND**
- (6770) EXISTING CONTOUR
 - 6770 PROPOSED CONTOUR
 - BOUNDARY/FILING LINE
 - EXISTING FLOW DIRECTION
 - PROPOSED FLOW DIRECTION
 - PROPOSED INLET
 - PROPOSED STORM PIPE
 - EXISTING STORM PIPE
 - HP PROPOSED HIGH POINT
 - LP PROPOSED LOW POINT



SCALE: 1" = 30'
 EL PASO COUNTY FILE NO.: PUD SP-22-006

CLASSIC CONSULTING

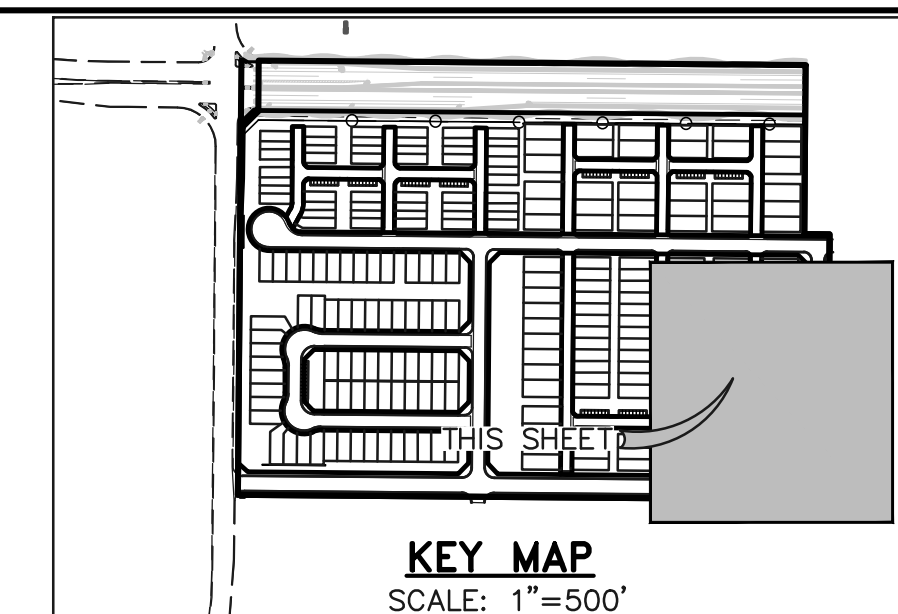
VILLAGES AT STERLING RANCH
 PRELIMINARY GRADING AND UTILITY PLAN

DESIGNED BY	EAS	SCALE	DATE	11/27/2023
DRAWN BY	EAS	(H) 1" = 30'	SHEET	14 OF 27
CHECKED BY	(V)	1" = N/A	JOB NO.	1183.26

619 N. Cascade Avenue, Suite 200 (719) 785-0790
 Colorado Springs, Colorado 80903 (719) 785-0799 (Fax)

N:\18326\DRAWINGS\DEVELOPMENT\18326-PUD-14.dwg, 5/20/2024, 2:56:39 PM, 1:1

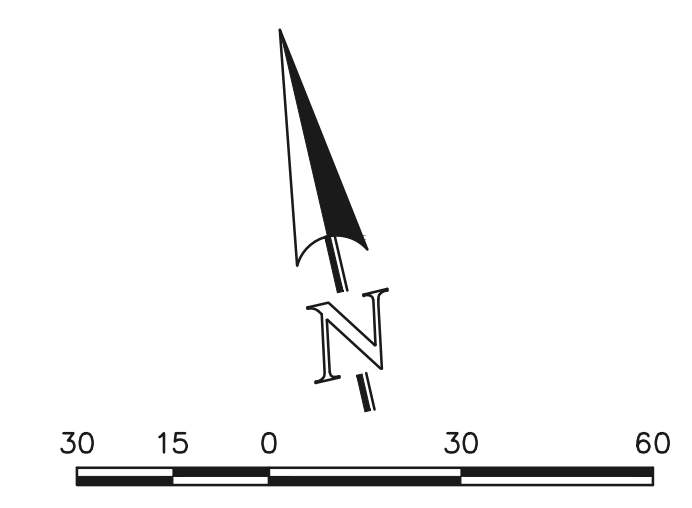
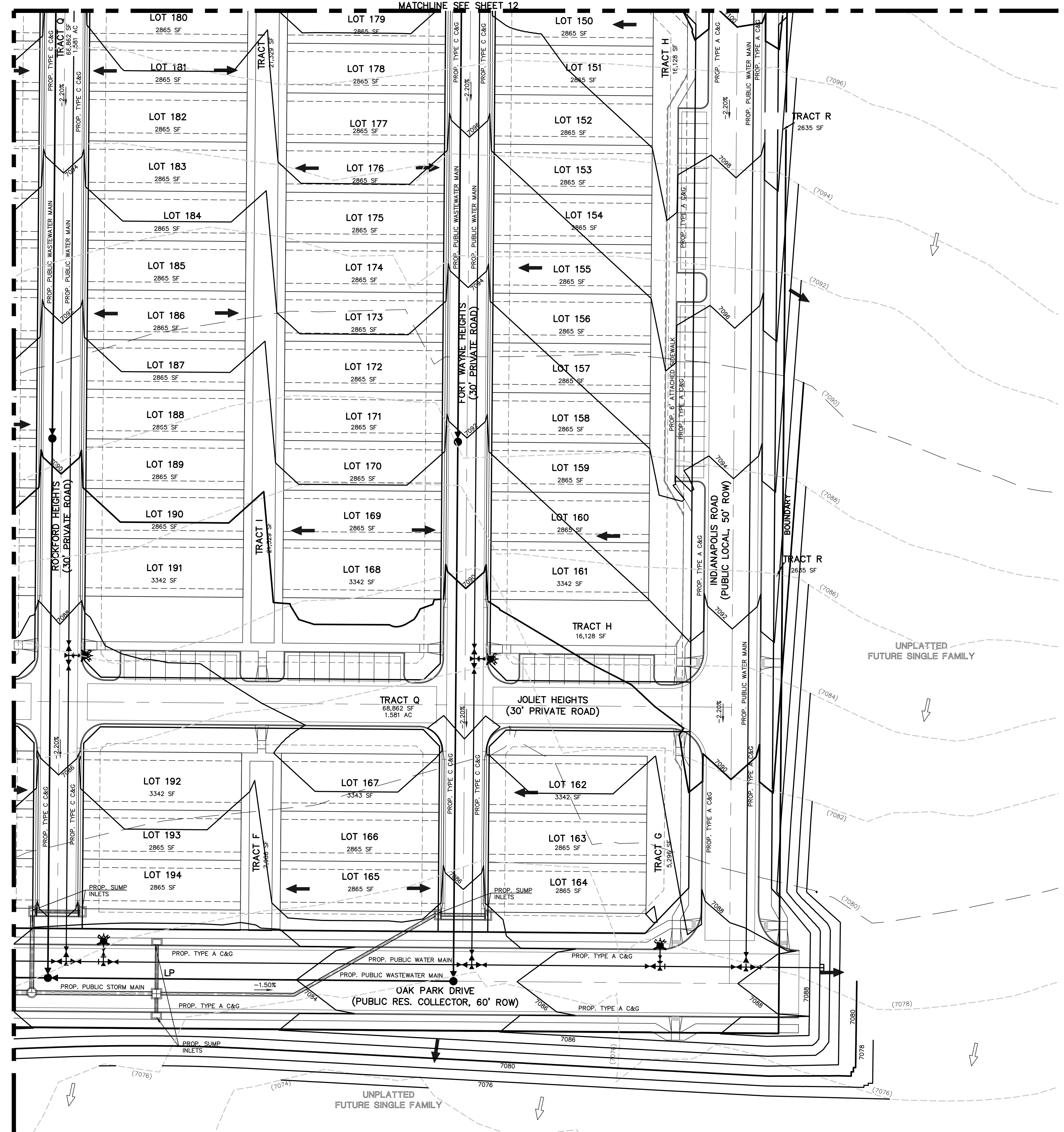
MATCHLINE SEE SHEET 12



LEGEND

- (6770) --- EXISTING CONTOUR
- 6770 --- PROPOSED CONTOUR
- BOUNDARY/FILING LINE
- EXISTING FLOW DIRECTION
- PROPOSED FLOW DIRECTION
- PROPOSED INLET
- PROPOSED STORM PIPE
- EXISTING STORM PIPE
- HP PROPOSED HIGH POINT
- LP PROPOSED LOW POINT

MATCHLINE SEE SHEET 14



EL PASO COUNTY FILE NO.: PUD SP-22-006

619 N. Cascade Avenue, Suite 200
Colorado Springs, Colorado 80903
(719) 785-0790
(719) 785-0799 (Fax)

VILLAGES AT STERLING RANCH

PRELIMINARY GRADING AND UTILITY PLAN

DESIGNED BY	EAS	SCALE	DATE	11/27/2023
DRAWN BY	EAS	(H) 1" = 30'	SHEET	15 OF 27
CHECKED BY	(V)	1" = N/A	JOB NO.	1183.26

CLASSIC CONSULTING

N:\18326\DRAWINGS\DEVELOPMENT\18326_PU-PG-15.dwg, 5/20/2024, 2:37:24 PM, 1:1