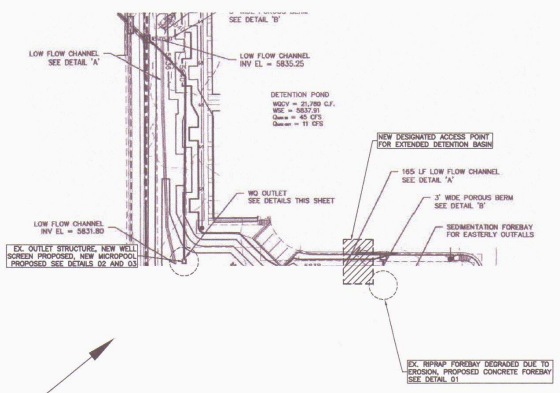
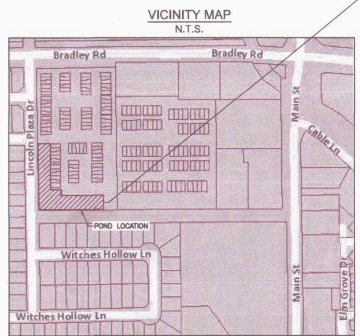


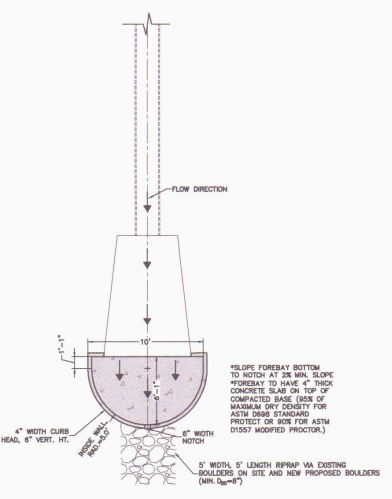
*as-built measurements taken 11/11/2020



DETAIL A - EXISTING EXTENDED DETENTION BASIN FOR LINCOLN COMMONS TOWNHOMES
N.T.S.

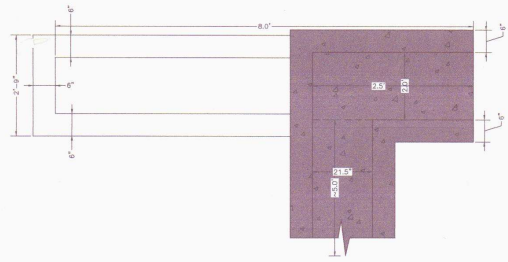


VICINITY MAP
N.T.S.

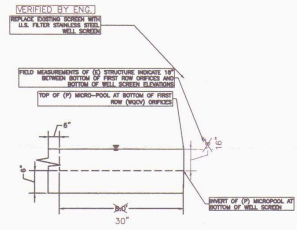


DETAIL 01 - PROPOSED CONCRETE FOREBAY
N.T.S.

*FOREBAY DESIGNED FOR 1% OF NOCV FROM DESIGN POINT 3 OF SP07012 DRAINAGE REPORT.



DETAIL 02 - PROPOSED MICRO-POOL PLAN VIEW
N.T.S.



DETAIL 03 - PROPOSED MICRO-POOL RETROFIT FOR EXISTING EDB OUTLET STRUCTURE
N.T.S.

NOTE: DETAILS FROM ORIGINAL LINCOLN COMMONS TOWNHOMES (SP07012) PROVIDED FOR REFERENCE. OUTLET STRUCTURE NOT BUILT TO DIMENSIONS SHOWN. FIELD MEASUREMENTS ARE USED FOR PROPOSED STRUCTURE(S).

ROCKY MOUNTAIN GROUP
 1817 1/2 AVENUE, SUITE 100, BOULDER, CO 80501
 303.440.4444
 WWW.ROCKYMOUNTAINGROUP.COM

PROFESSOR OF PRACTICE
 53921
 LICENSED PROFESSIONAL ENGINEER
 FOR FLOODPLAIN MANAGEMENT
 COLORADO

BRADLEY CROSSROADS LOT 4A
 1830 MAIN STREET
 COLORADO SPRINGS, CO
WESTERN MANAGEMENT GROUP

POND DETAILS
 PERMIT REVIEW

DESIGNED BY	MS	
DRAWN BY	MS	
CHECKED BY	MS	
DATE	03/02/20	
#	REVISION	DATE
1	ISSUED	03/02/20
2	REVISED	03/02/20
3	REVISED	03/02/20
4	REVISED	03/02/20
5	REVISED	03/02/20
6	REVISED	03/02/20
7	REVISED	03/02/20
8	REVISED	03/02/20
9	REVISED	03/02/20
10	REVISED	03/02/20

JOB NO. 170736
 SHEETS CV-1 OF 18