





## GENERAL NOTES

- ALL WORK SHALL BE DONE IN COMPLIANCE WITH ALL LOCAL CODES.
- ELECTRICAL CONTRACTOR SHALL VISIT SITE AND EXAMINE DRAWINGS OF OTHER TRADES ON THIS PROJECT, ARCHITECTURAL AND MECHANICAL, TO DETERMINE ANY ADDITIONAL WORK THAT MAY BE REQUIRED FOR A COMPLETE AND OPERATIONAL ELECTRICAL INSTALLATION AND SHALL INCLUDE AN ALLOWANCE FOR THIS WORK IN HIS BID.
- CONTRACTOR SHALL BE HELD RESPONSIBLE FOR VERIFICATION OF EXISTING JOB CONDITIONS PRIOR TO BID. NO ADDITIONAL COSTS SHALL BE AWARDED TO THE SUCCESSFUL CONTRACTOR OR HIS SUBCONTRACTORS.
- THE CONDUIT SYSTEM AND ALL CONDUCTING WIRE ENCLOSURES SHALL BE SECURELY BONDED TOGETHER.
- ALL ELECTRICAL PANELS SHALL ACCESSIBLE AND CLEAR OF ALL OBSTRUCTIONS WITH MINIMAL CLEARANCES PER NEC REQUIREMENTS.
- PROVIDE TYPE-WRITTEN UPDATED PANEL DOOR DIRECTORIES FOR ALL AFFECTED PANELS REFLECTING ALL CIRCUITS WITH THEIR ACCURATE DESTINATIONS.
- RECEPTACLES 120V DUPLEX GROUNDING TYPE, SHALL BE APPROVED TYPE.
- SWITCHES SHALL BE TOGGLE TYPE AND APPROVED TYPE.
- ALL ELECTRICAL EQUIPMENT, DEVICES, CIRCUITING, ETC, SHOWN DIAGRAMMATICALLY ONLY, ELECTRICAL CONTRACTOR SHALL BE RESPONSIBLE FOR ACTUAL LOCATION AND WIRING AVOIDING MECHANICAL AND OTHER EQUIPMENT.
- FURNISH AND INSTALL LIGHTING FIXTURES COMPLETE WITH LAMPS, BALLASTS, AND REQUIRED MOUNTING HARDWARE, PRIOR TO ORDERING FIXTURES, VERIFY SECURE MOUNTING METHODS AND FINISHES.
- THESE NOTES ARE GENERAL AND MAY NOT APPLY TO THE EXACT SCOPE OF WORK.

## Statistics

Description	Symbol	Avg	Max	Min	Max/Min	Avg/Min
Calc Zone #1	+	0.2 fc	8.5 fc	0.0 fc	N/A	N/A

## Luminaries Schedule

Symbol	Label	Quantity	Manufacturer	Catalog Number	Description	Lamp	Number Lamps	Filename	Lumens Per Lamp	Light Loss Factor	Wattage
	A	8	RAB LIGHTING INC.	ALED26-ALED26/D10 (AREA LIGHTER)	CAST FINNED METAL HOUSING, MACHINED METAL HEAT SINK, 1 CIRCUIT BOARD WITH 1 LED, MOLDED PLASTIC REFLECTOR WITH SEMI-SPECULAR FINISH, CLEAR FLAT GLASS LENS IN CAST BROWN PAINTED METAL FRAME. FULL CUTOFF	ONE WHITE MULTI-CHIP LIGHT EMITTING DIODE (LED), TILTED 33-DEGREES FROM VERTICAL BASE-UP POSITION. INPUT VOLTAGE TO THE LED DRIVERS. Facade, Government, Harbor, Healthcare, Hospitality, Hotel, Industrial, Institutional, Library, Manufacturing, Marine, Medical, Office, Parking, Parks, Pathway Pedestrian, Pool, Recreation Residential, Retail, Site, Tunnel, Underpass, Utility, Walkway Warehouse, Water Treatment, Direct, Emergency, Security	1	AREA-LIGHT-RAB-ALED26-rab02619.ies	3474	1	30
	B	2	RAB LIGHTING INC.	ALED10 (AREA LIGHTER) (Bollard)	CAST METAL HOUSING, ONE CIRCUIT BOARD WITH ONE LED, MOLDED PLASTIC REFLECTOR WITH SEMI-DIFFUSE FINISH, CLEAR FLAT GLASS LENS IN CAST BROWN PAINTED METAL FRAME. FULL CUTOFF	ONE WHITE MULTI-CHIP LIGHT EMITTING DIODE (LED), TILTED 30-DEGREES FROM VERTICAL BASE-UP POSITION. WPLED10Y (WALLPACK) - ALED10Y (AREA LIGHTER) - BLEDD10Y (Bollard). ACTUAL PERFORMANCE MAY VARY. Government, Harbor, Healthcare, Hospitality, Hotel, Industrial, Institutional, Library, Manufacturing, Marine, Medical, Office, Parking, Parks, Pathway Pedestrian, Pool, Recreation Residential, Retail, Site, Tunnel, Underpass, Utility, Walkway, Warehouse, Water Treatment, Direct, Emergency, Security, Damp Location, Wet Location	1	AREA-LIGHT-RAB-ALED10-rab02318mod50 (1).ies	1207	1	12.4
	C	5	WAC Lighting	WS-W68627-BZ A010416	WALL MOUNTED FULL CUTOFF		1	FRONT-LIGHTS-WS-W68627-BZ A010416.IES	731	1	23.5
	D	10	RAB LIGHTING INC.	WPLED10 (WALLPACK) - ALED10 (AREA LIGHTER) - BLEDD10 (Bollard)	CAST METAL HOUSING, ONE CIRCUIT BOARD WITH ONE LED, MOLDED PLASTIC REFLECTOR WITH SEMI-DIFFUSE FINISH, CLEAR FLAT GLASS LENS IN CAST BROWN PAINTED METAL FRAME. FULL CUTOFF	ONE WHITE MULTI-CHIP LIGHT EMITTING DIODE (LED), TILTED 30-DEGREES FROM VERTICAL BASE-UP POSITION. WPLED10Y (WALLPACK) - ALED10Y (AREA LIGHTER) - BLEDD10Y (Bollard). ACTUAL PERFORMANCE MAY VARY. Government, Harbor, Healthcare, Hospitality, Hotel, Industrial, Institutional, Library, Manufacturing, Marine, Medical, Office, Parking, Parks, Pathway Pedestrian, Pool, Recreation Residential, Retail, Site, Tunnel, Underpass, Utility, Walkway, Warehouse, Water Treatment, Direct, Emergency, Security, Damp Location, Wet Location	1	WALL-PACK-WPLED10-Brab02318mod50 (2).ies	1207	1	12.4

## EPA Load Information

BASE MODEL	80 MPH w/1.3 GUST		90 MPH w/1.3 GUST		100 MPH w/1.3 GUST	
	MAX EPA (SQFT)	MAX WEIGHT (LBS)	MAX EPA (SQFT)	MAX WEIGHT (LBS)	MAX EPA (SQFT)	MAX WEIGHT (LBS)
VS-SSSA-10-4040-11-AB-FP	30.6	765	23.8	595	18.9	473
VS-SSSA-12-4040-11-AB-FP	24.4	610	18.8	470	14.8	370
VS-SSSA-14-4040-11-AB-FP	19.9	498	15.1	378	11.7	293
VS-SSSA-15-4040-11-AB-FP	15.9	398	11.8	295	8.9	223
VS-SSSA-16-4040-11-AB-FP	15.9	398	11.8	295	8.9	223
VS-SSSA-18-4040-11-AB-FP	12.6	315	9.2	230	6.7	168
VS-SSSA-20-4040-11-AB-FP	9.6	240	6.7	167	4.5	150
VS-SSSA-20-4040-07-AB-FP	15.8	240	12.7	167	9	150
VS-SSSA-20-5050-11-AB-FP	17.7	443	12.7	343	9.4	235
VS-SSSA-20-5050-07-AB-FP	28.1	703	21.4	535	16.2	405
VS-SSSA-25-4040-11-AB-FP	4.8	150	2.6	100	1	50
VS-SSSA-25-4040-07-AB-FP	10.8	270	7.7	188	5.4	135
VS-SSSA-25-5050-11-AB-FP	9.8	245	6.3	157	3.7	150
VS-SSSA-25-5050-07-AB-FP	18.5	463	13.3	333	9.5	238
VS-SSSA-30-4040-07-AB-FP	6.7	168	4.4	110	2.6	65
VS-SSSA-30-5050-11-AB-FP	4.7	150	2	50	N/A	N/A
VS-SSSA-30-5050-07-AB-FP	10.7	267	6.7	167	3.9	100
VS-SSSA-30-6060-07-AB-FP	19	475	13.2	330	9	225
VS-SSSA-35-5050-07-AB-FP	5.9	150	2.5	100	N/A	N/A
VS-SSSA-35-6060-07-AB-FP	12.4	310	7.6	190	4.2	105
VS-SSSA-40-6060-07-AB-FP	7.2	180	3	75	N/A	N/A

## Designation & Dimensional Information

BASE MODEL	NOMINAL MOUNTING HEIGHT	POLE DIMENSIONS			STRUCTURE WEIGHT (LBS)	BASE PLATE		ANCHOR BOLTS		
		TOP SQ (IN)	BASE SQ (IN)	WALL THK (GA)		BOLT/CIRCLE DIA (IN)	SQ (IN) X THICK (IN)	DIA X LENGTH X HOOK (IN)	PROJECTION (IN)	
VS-SSSA-10-4040-11-AB-FP	10'-0"	4	4	11	140	8.0	8.0	8.25 x 0.75	0.75 x 17.00 x 3.00	3.25 - 3.75
VS-SSSA-12-4040-11-AB-FP	12'-0"	4	4	11	90	8.0	9.0	8.25 x 0.75	0.75 x 17.00 x 3.00	3.25 - 3.75
VS-SSSA-14-4040-11-AB-FP	14'-0"	4	4	11	100	8.0	9.0	8.25 x 0.75	0.75 x 17.00 x 3.00	3.25 - 3.75
VS-SSSA-15-4040-11-AB-FP	15'-0"	4	4	11	110	8.0	9.0	8.25 x 0.75	0.75 x 17.00 x 3.00	3.25 - 3.75
VS-SSSA-16-4040-11-AB-FP	16'-0"	4	4	11	115	8.0	9.0	8.25 x 0.75	0.75 x 17.00 x 3.00	3.25 - 3.75
VS-SSSA-18-4040-11-AB-FP	18'-0"	4	4	11	125	8.0	9.0	8.25 x 0.75	0.75 x 17.00 x 3.00	3.25 - 3.75
VS-SSSA-20-4040-11-AB-FP	20'-0"	4	4	11	140	8.0	9.0	8.25 x 0.75	0.75 x 17.00 x 3.00	3.25 - 3.75
VS-SSSA-20-4040-07-AB-FP	20'-0"	4	4	7	200	8.0	9.0	8.25 x 0.875	0.75 x 17.00 x 3.00	3.38 - 3.88
VS-SSSA-20-5050-11-AB-FP	20'-0"	5	5	11	185	10.0	12.0	11 x 1	0.75 x 17.00 x 3.00	3.5 - 4
VS-SSSA-20-5050-07-AB-FP	20'-0"	5	5	7	265	10.0	12.0	11 x 1	0.75 x 17.00 x 3.00	3.5 - 4
VS-SSSA-25-4040-11-AB-FP	25'-0"	4	4	11	170	8.0	9.0	8.25 x 0.75	0.75 x 17.00 x 3.00	3.25 - 3.75
VS-SSSA-25-4040-07-AB-FP	25'-0"	4	4	7	245	8.0	9.0	8.25 x 0.875	0.75 x 17.00 x 3.00	3.38 - 3.88
VS-SSSA-25-5050-11-AB-FP	25'-0"	5	5	11	225	10.0	12.0	11 x 1	0.75 x 17.00 x 3.00	3.5 - 4
VS-SSSA-25-5050-07-AB-FP	25'-0"	5	5	7	360	10.0	12.0	11 x 1	0.75 x 17.00 x 3.00	3.5 - 4
VS-SSSA-30-4040-07-AB-FP	30'-0"	4	4	7	291	8.0	9.0	8.25 x 0.875	0.75 x 17.00 x 3.00	3.38 - 3.88
VS-SSSA-30-5050-11-AB-FP	30'-0"	5	5	11	265	10.0	12.0	11 x 1	0.75 x 17.00 x 3.00	3.5 - 4
VS-SSSA-30-5050-07-AB-FP	30'-0"	5	5	7	380	10.0	12.0	11 x 1	0.75 x 17.00 x 3.00	3.5 - 4
VS-SSSA-30-6060-07-AB-FP	30'-0"	6	6	7	520	11.0	13.0	12.5 x 1	1.00 x 36.00 x 4.00	4 - 4.5
VS-SSSA-35-5050-07-AB-FP	35'-0"	5	5	7	440	10.0	12.0	11 x 1	0.75 x 17.00 x 3.00	3.5 - 4
VS-SSSA-35-6060-07-AB-FP	35'-0"	6	6	7	540	11.0	13.0	12.5 x 1	1.00 x 36.00 x 4.00	4 - 4.5
VS-SSSA-40-6060-07-AB-FP	40'-0"	6	6	7	605	11.0	13.0	12.5 x 1	1.00 x 36.00 x 4.00	4 - 4.5

- The total combined EPA and weight of all fixtures, brackets and attachments mounting to a light pole cannot exceed the EPA and weight rating for a specified pole.
- Standard EPA (Effective Projected Area) and weight values are based on Standard Commercial Criteria (with 1.3 gust factor) for side mounted fixtures only. Consult the factory on loading criteria for pole top mounted luminaires and/or brackets.
- Satisfactory performance of light poles is dependent upon the pole being properly attached to a supporting foundation of adequate design.

Note: Additional sizes and configurations are available upon request.

\*- Indicates a vibration damper is standard

**lightpoles PLUS.**

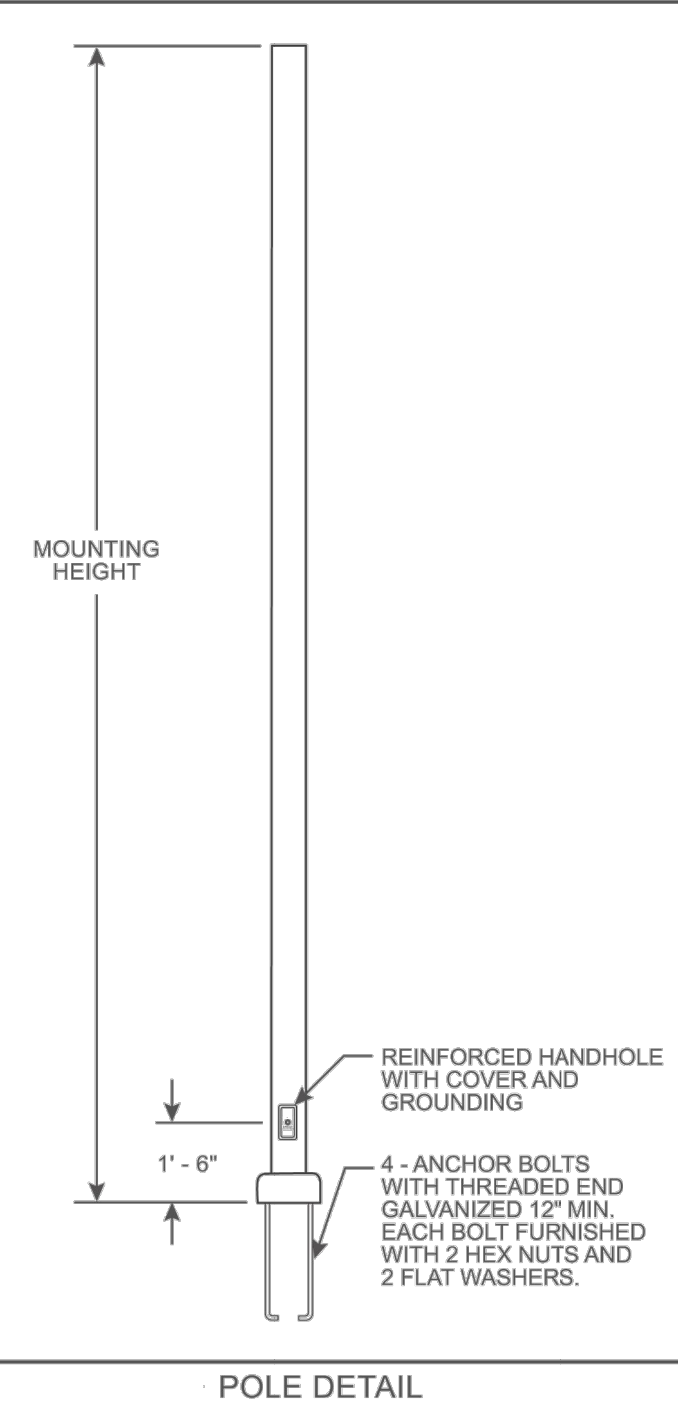
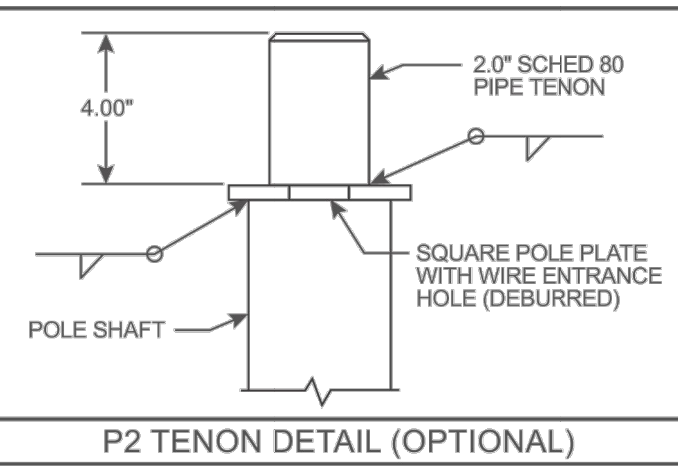
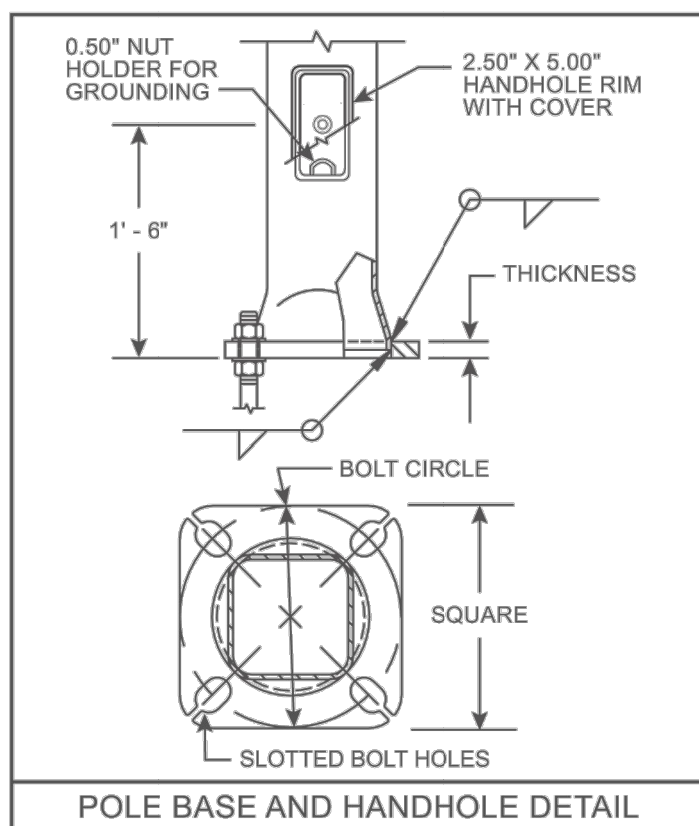
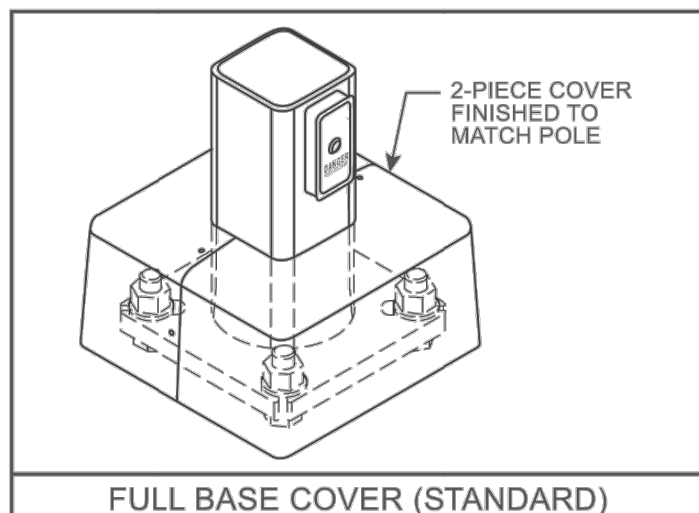
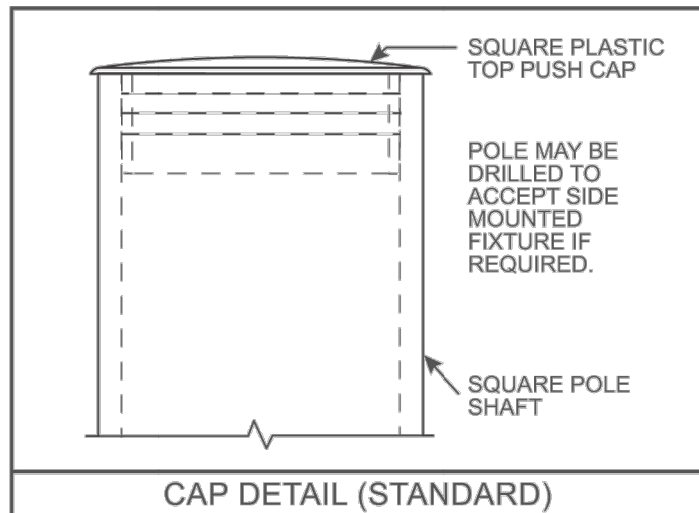
206 W. McWilliams St.  
Suite 101  
Fond du Lac, WI 54935

888-791-1463  
quotes@lightpolesplus.com  
LightPolesPlus.com



Rev. V09122018

This specification brochure is intended to serve as a general guide. Our products are continually being engineered and improved, and specifications are subject to change without notice.



## Ordering Information

Designation	Length	Base OD	Top OD	Thickness	Anchor Bolts	Finish Type
VS-SSSA	Square Straight Steel Anchor Base	10 to 40	40 = 4" 40 = 4" 50 = 5" 60 = 6"	07 = 7ga 11 = 11ga	Includes AB = Anchor Bolts LAB = Anchor Balls	07 = Galvanized Only (No Paint) FP = Finish Painted Finish FP07 = Paint over Galvanizing

Ex. VS-SSSA-10-4040-11-AB-FP-DB-D1-EHH

\* See previous pages for base model configurations. Consult factory or your sales rep for deviations from base models. Additional sizes and configurations available upon request.

## Options & Accessories

Description
SPL = Special Out Length (Please Specify)
BCSPL = Special Base Plate to Match Existing Bolt Circle (May Add 2 Weeks to Production Lead Time, May Require Special Base Cover)
VDA = Internal Vibration Damper, Factory Installed
VDF = Internal Vibration Damper, Field Installable
FBCS = Steel Full Base Cover
FBCP = ABS Plastic Full Base Cover

Description
ULMH = UL Compliant Hand Hole
NECHH = NEC 410.30 Compliant Hand Hole & Cover
EH = Additional Hand Hole Opening w/ Cover
EH = Assembly (Specify Pole Height & Orientation)
FST = Faston Provision, Electrical by Others (Specify Pole Height & Orientation)
CPL = NPT Pipe Coupling (Specify Pole Height, Orientation & NPT Size)
PDIX = Side Drill = Tenon w/ Additional Hand Hole (Specify Tenon OD & Length)

Description
STAMP = Engineering Services, Signed & Sealed Calculations
STAMPCA = Engineering Services, CA Signed & Sealed Calculations
PRE750 = Pre-Ship Anchor Bolts - 0.75" x 17" x 2"
PRE10 = Pre-Ship Anchor Bolts - 1.0" x 36" x 4"

Other Options  
PC = Cap Only, No Side Drilling  
PL = Open Top, No Cap or Side Drilling

Note: Please consult factory or your sales representative to verify options and accessories will work with your light pole part number.

**lightpoles PLUS.**

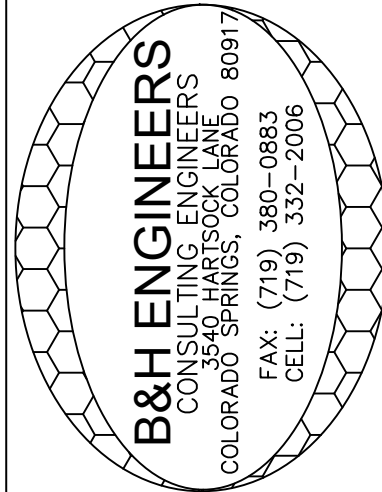
206 W. McWilliams St.  
Suite 101  
Fond du Lac, WI 54935

888-791-1463  
quotes@lightpolesplus.com  
LightPolesPlus.com



Rev. V09122018

This specification brochure is intended to serve as a general guide. Our products are continually being engineered and improved, and specifications are subject to change without notice.



CONSULTING ELECTRICAL, MECHANICAL & PLUMBING ENGINEERS

3540 HARTSOCK LANE  
COLORADO SPRINGS, COLORADO 80917

(719) 332-2006

REVISION/DATE

DATE: 11-28-19

JOB NO.

DRAWN BY: B&H

CHECKED BY: BP

FILE NAME

1830 MAIN ST  
COLORADO SPRINGS, CO 80911

B&H ENGINEERS

PHOTO METRIC  
SCHEDULES

PM-2  
12 OF 16



"A" LIGHT

ALED26

RAB



Color: Bronze

Weight: 6.3 lbs

Project:	Type:
Prepared By:	Date:

Driver Info		LED Info	
Type	Constant Current	Watts	26.00W
120V	0.17A	Color Temp	5000K (Cool)
208V	0.11A	Color Accuracy	72 CRI
240V	0.10A	L70 Lifespan	100,000
277V	0.09A	Lumens	3,483
Input Watts	29.10W	Efficacy	119.7 LPW
Efficiency	89%		

Technical Specifications

Listings

UL Listed:

Suitable for wet locations

IESNA LM-79 & IESNA LM-80 Testing:

RAB LED luminaires and LED components have been tested by an independent laboratory in accordance with IESNA LM-79 and LM-80.

Dark Sky Conformance:

Conforms to (allows for conformance to) the IDA's fully shielding requirement, emitting no light above 90 degrees (with the exclusion of incidental light reflecting from fixture housing, mounts, and pole).

DLC Listed:

This product is listed by Design Lights Consortium (DLC) as an ultra-efficient premium product that qualifies for the highest tier of rebates from DLC Member Utilities. DLC Product Code: P00001700

LED Characteristics

Lifespan:

100,000-hour LED lifespan based on IES LM-80 results and TM-21 calculations

Lumen Maintenance:

The LED will deliver 70% of its initial lumens at 100,000 hours of operation

Color Consistency:

7-step MacAdam Ellipse binning to achieve consistent future-to-future color

Color Stability:

LED color temperature is warranted to shift no more than 200K in CCT over a 5-year period

Color Uniformity:

RAB's range of CCT (Correlated Color Temperature) follows the guidelines of the American National Standard for Specifications for the Chromaticity of Solid State Lighting (SSL) Products, ANSI C78.377-2017.

Construction

Ingress Protection rating of IP66 for dust and water

IES Classification:

The Type IV distribution (also known as a Forward Throw) is especially suited for mounting on the sides of buildings and walls, and for illuminating the perimeter of parking areas. It produces a semi-circular distribution with essentially the same candlepower at lateral angles from 90° to 270°.

Housing:

Precision die-cast aluminum housing, lens frame

Gaskets:

High-temperature silicone

Effective Projected Area:

EPA = 0.27.

Finish:

Formulated for high durability and long-lasting color

Green Technology:

Mercury and UV free. RoHS-compliant components

Ambient Temperature:

Suitable For use in 40°C (104°F)

Cold Weather Starting:

Minimum starting temperature is -40°C (-40°F)

Other

Patents: The ALED design is protected by U.S. PATENT D608,040 and patents pending in the U.S., Canada, China, Taiwan and Mexico.

"A" LIGHT

ALED26

RAB

Technical Specifications (continued)

Other

Equivalency: Equivalent to 120W Pulse Start Metal Halide

Warranty:

RAB warrants that our LED products will be free from defects in materials and workmanship for a period of five (5) years from the date of delivery to the end user, including coverage of light output, color stability, driver performance and fixture finish. RAB's warranty is subject to all terms and conditions found at [rablighting.com/warranty](http://rablighting.com/warranty).

Buy American Act Compliance:

RAB values USA manufacturing! Upon request, RAB may be able to manufacture this product to be compliant with the Buy American Act (BAA). Please contact customer service to request a quote for the product to be made BAA compliant.

Optical

BUG Rating:

B1 U0 G0

Electrical

Driver:

Multi-chip 26W high output long life LED Driver Constant Current, 720mA, Class 2, 8kV Surge Protection, 100V-277V, 50-60 Hz, 100-240V/4 Arms.

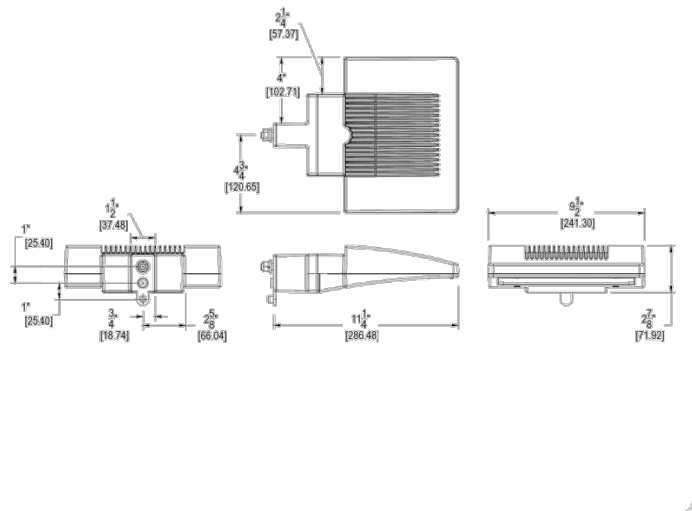
THD:

11.91% at 120V, 9.58% at 277V

Power Factor:

99.1% at 120V, 93.1% at 277V

Dimensions



Features

High output LED light engine  
Maintains 70% of initial lumens at 100,000-hours  
Weatherproof high temperature silicone gaskets  
Superior heat sinking with die cast aluminum housing and external fins

Need help? Tech help line: (888) 722-1000 Email: [custserv@rablighting.com](mailto:custserv@rablighting.com) Website: [www.rablighting.com](http://www.rablighting.com)  
Copyright © 2019 RAB Lighting All Rights Reserved Note: Specifications are subject to change at any time without notice

Page 2 of 2

"B" LIGHT

ALED10

RAB



Color: Bronze

Weight: 3.2 lbs

Project:	Type:
Prepared By:	Date:

Driver Info		LED Info	
Type	Constant Current	Watts	10.00W
120V	0.1A	Color Temp	5000K (Cool)
208V	0.07A	Color Accuracy	73 CRI
240V	0.05A	L70 Lifespan	100,000
277V	0.05A	Lumens	1,208
Input Watts	12.40W	Efficacy	97.4 LPW
Efficiency	81%		

Technical Specifications

Listings

UL Listed:

Suitable for wet locations

IESNA LM-79 & IESNA LM-80 Testing:

RAB LED luminaires and LED components have been tested by an independent laboratory in accordance with IESNA LM-79 and LM-80.

Dark Sky Conformance:

Conforms to (allows for conformance to) the IDA's fully shielding requirement, emitting no light above 90 degrees (with the exclusion of incidental light reflecting from fixture housing, mounts, and pole).

DLC Listed:

This product is on the Design Lights Consortium (DLC) Qualified Products List and is eligible for rebates from DLC Member Utilities. DLC Product Code: PTWJ0WB

LED Characteristics

Lifespan:

100,000-hour LED lifespan based on IES LM-80 results and TM-21 calculations

Lumen Maintenance:

The LED will deliver 70% of its initial lumens at 100,000 hours of operation

Color Consistency:

7-step MacAdam Ellipse binning to achieve consistent future-to-future color

Color Stability:

LED color temperature is warranted to shift no more than 200K in CCT over a 5-year period

Color Uniformity:

RAB's range of CCT (Correlated Color Temperature) follows the guidelines of the American National Standard for Specifications for the Chromaticity of Solid State Lighting (SSL) Products, ANSI C78.377-2017.

Construction

The Type III distribution is ideal for roadway, general parking, and other area lighting applications where a larger pool of lighting is required. It is intended to be located near the side of the area, allowing the light to project outward and fill the area.

Housing:

Integral-cast aluminum mounting pad and external fins for optimum heat sinking to ensure cool operation with maximum LED life and light output

Gaskets:

High-temperature silicone

Finish:

Formulated for high durability and long-lasting color

Green Technology:

Mercury and UV free. RoHS-compliant components.

Effective Projected Area:

EPA = 0.2

Cold Weather Starting:

Minimum starting temperature is -40°C (-40°F)

Maximum Ambient Temperature:

Suitable for use in 40°C (104°F)

Maximum EPA:

Fixed Arm = 0.10.

Other

Patents: The design of the ALED is protected by patents pending in Canada, U.S., China and Taiwan.

Need help? Tech help line: (888) 722-1000 Email: [custserv@rablighting.com](mailto:custserv@rablighting.com) Website: [www.rablighting.com](http://www.rablighting.com)  
Copyright © 2019 RAB Lighting All Rights Reserved Note: Specifications are subject to change at any time without notice

Page 1 of 2

"B" LIGHT

ALED10

RAB

Technical Specifications (continued)

Other

HID Replacement Range: Replaces 35 - 50W Metal Halide

Equivalency:

Equivalent to 70W Pulse Start Metal Halide

Warranty:

RAB warrants that our LED products will be free from defects in materials and workmanship for a period of five (5) years from the date of delivery to the end user, including coverage of light output, color stability, driver performance and fixture finish. RAB's warranty is subject to all terms and conditions found at [rablighting.com/warranty](http://rablighting.com/warranty).

Buy American Act Compliance:

RAB values USA manufacturing! Upon request, RAB may be able to manufacture this product to be compliant with the Buy American Act (BAA). Please contact customer service to request a quote for the product to be made BAA compliant.

Optical

BUG Rating:

B1 U0 G0

Electrical

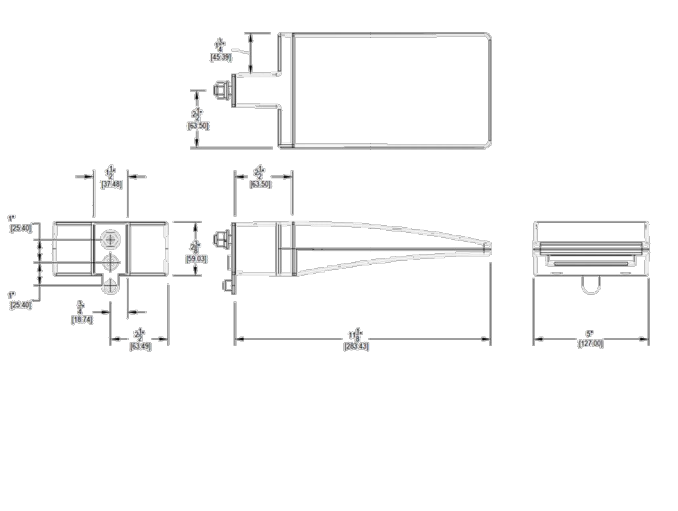
THD:

10.8% at 120V, 13.8% at 277V

Power Factor:

98.5% at 120V, 92.1% at 277V

Dimensions



Features

High output LED light engine  
Maintains 70% of initial lumens at 100,000-hours  
Weatherproof high temperature silicone gaskets  
Superior heat sinking with die cast aluminum housing and external fins

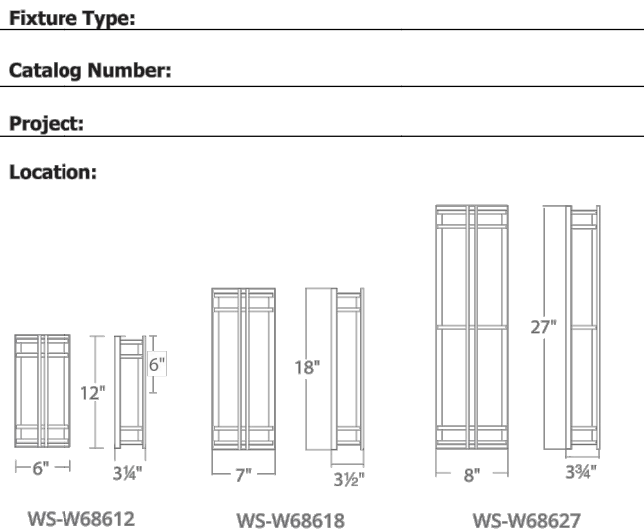
Need help? Tech help line: (888) 722-1000 Email: [custserv@rablighting.com](mailto:custserv@rablighting.com) Website: [www.rablighting.com](http://www.rablighting.com)  
Copyright © 2019 RAB Lighting All Rights Reserved Note: Specifications are subject to change at any time without notice

Page 2 of 2

"C" LIGHT

SKYSCRAPER Exterior Scones  
WS-W68612 / WS-W68618 / WS-W68627

MODERN FORMS



PRODUCT DESCRIPTION

Elevate your space. A classic architectural design thoughtfully engineered for robustness to withstand commercial use for interiors or exteriors. A UV stabilized acrylic diffuser and marine grade stainless steel structure complete this specification-grade wall mount luminaire. Available in either black, bronze or stainless steel finish.

FEATURES

- F1-rated acrylic
- Weather-resistant powder coat
- SS - 316 marine-grade stainless steel or bronze-finished aluminum (BZ & BK - Aluminum construction)
- No transformer or driver needed
- 277V options available
- Dimmer: ELV
- Rated Life: 80,000 hours
- Color temp: 3000K
- 2700K and 3500K special order
- CRI:90

ORDER NUMBER

Model	Height	Wattage	Voltage	LED Lumens	Delivered Lumens	Finish
WS-W68612	12"	12W		605	418	BK Black
WS-W68618	18"	19W	120V	1099	741	BZ Bronze
WS-W68627	27"	24W		1272	880	SS Stainless Steel

Example: WS-W68612-BZ  
For 277V special order, add an "F" before the finish: WS-W68612F-BZ  
For 2700K add ~27"; 3500K add ~35" before the finish: WS-W68618-35-SS

modernforms.com Phone (866) 815.6615 Fax (800) 526.2585 Headquarters/Extern Distribution Center 44 Harbor Park Drive Port Washington, NY 11050 Central Distribution Center 1600 Distribution Ct Lithia Springs, GA 30122 Western Distribution Center 1750 Archbald Avenue Ontario, CA 91760

Modern Forms retains the right to modify the design of our products at any time as part of the company's continuous improvement program. Feb 2019

"D" LIGHT

WPLED10

RAB



LED 10W & 13 Wall packs, patent-pending thermal management system. 100,000 hour L70 lifespan. 5-year, no-compromise warranty.  
Color: Bronze Weight: 3.3 lbs

Technical Specifications

Listings

UL Listed:

Suitable for Wet Locations as a Downlight. Suitable for Damp Locations as an Uplight. Wall Mount only. Suitable for Mounting within 4ft. of ground.

IESNA LM-79 & IESNA LM-80 Testing:

RAB LED luminaires and LED components have been tested by an independent laboratory in accordance with IESNA LM-79 and LM-80.

DLC Listed:

This product is on the Design Lights Consortium (DLC) Qualified Products List and is eligible for rebates from DLC Member Utilities. DLC Product Code: PXP2J2LL

LED Characteristics

100,000-hour LED lifespan based on IES LM-80 results and TM-21 calculations

Color Consistency:

7-step MacAdam Ellipse binning to achieve consistent future-to-future color

LED color temperature is warranted to shift no more than 200K in CCT over a 5-year period

Color Uniformity:

RAB's of CCT (Correlated color temperature) follows the guidelines of the American National Standard for Specifications for the Chromaticity of Solid State Lighting (SSL) Products, ANSI

Lumen Maintenance:

The LED will deliver 70% of its initial lumens at 100,000 hours of operation

Construction

Finish:

Formulated for high durability and long-lasting color

Cold Weather Starting:

Minimum starting temperature is -40°C (-40°F)

Maximum Ambient Temperature:

Suitable for use in 40°C (104°F)

Housing:

Precision die-cast aluminum housing, lens frame

Mounting:

Surface plate and Junction box

Green Technology:

Mercury and UV free. RoHS-compliant components.

Gaskets:

High-temperature Silicone

Electrical

Driver:

Multi-chip 10W high output long life LED Driver Constant Current, Class II, 120V-240V, 50/60 Hz, 350mA

THD:

10.8% at 120V, 13.8% at 277V

Power Factor:

98.5% at 120V, 92.1% at 277V

Other

Patents: The LPACK design is protected under patents in the U.S. Pat. D608,040; Canada Pat. 190,243; China Pat. 200930183252.2, and pending patents in Taiwan and Mexico.

Need help? Tech help line: (888) 722-1000 Email: [custserv@rablighting.com](mailto:custserv@rablighting.com) Website: [www.rablighting.com](http://www.rablighting.com)  
Copyright © 2019 RAB Lighting All Rights Reserved Note: Specifications are subject to change at any time without notice

Page 1 of 3

WPLED10

RAB

Technical Specifications (continued)

Other

Warranty: RAB warrants that our LED products will be free from defects in materials and workmanship for a period of five (5) years from the date of delivery to the end user, including coverage of light output, color stability, driver performance and fixture finish. RAB's warranty is subject to all terms and conditions found at [rablighting.com/warranty](http://rablighting.com/warranty).

Equivalency:

Equivalent to 70W Metal Halide

Buy American Act Compliance:

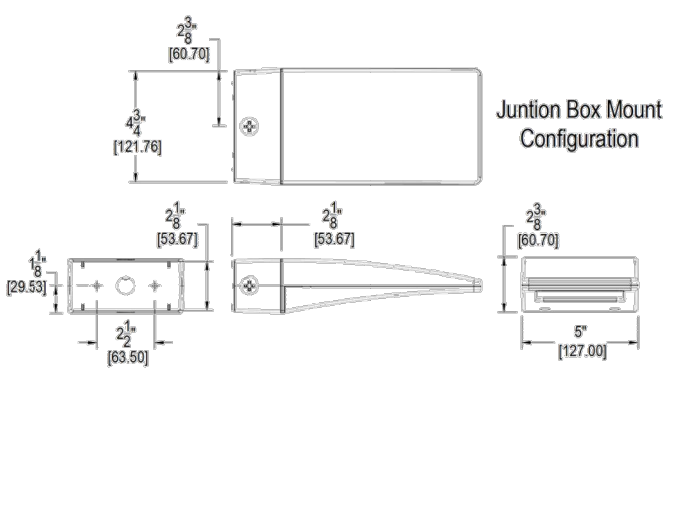
RAB values USA manufacturing! Upon request, RAB may be able to manufacture this product to be compliant with the Buy American Act (BAA). Please contact customer service to request a quote for the product to be made BAA compliant.

Optical

BUG Rating:

B1 U0 G0

Dimensions



Features

High performance LED light engine  
Maintains 70% of initial lumens at 100,000-hours  
Weatherproof high temperature silicone gaskets  
Superior heat sinking with die cast aluminum housing and external fins  
5-Year, No-Compromise Warranty

Need help? Tech help line: (888) 722-1000 Email: [custserv@rablighting.com](mailto:custserv@rablighting.com) Website: [www.rablighting.com](http://www.rablighting.com)  
Copyright © 2019 RAB Lighting All Rights Reserved Note: Specifications are subject to change at any time without notice

Page 3 of 3

