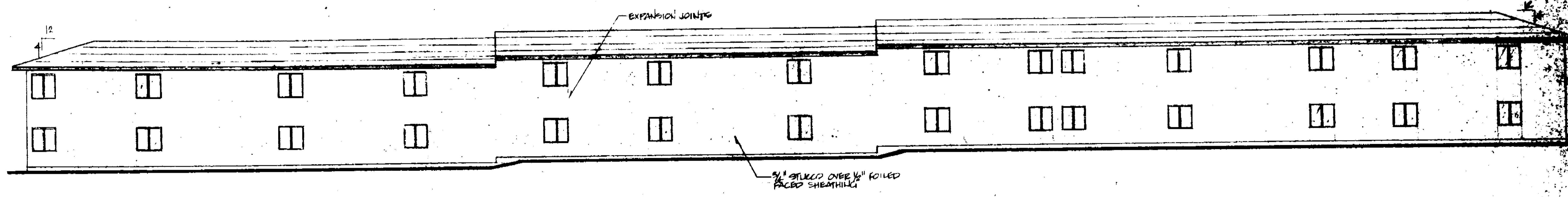
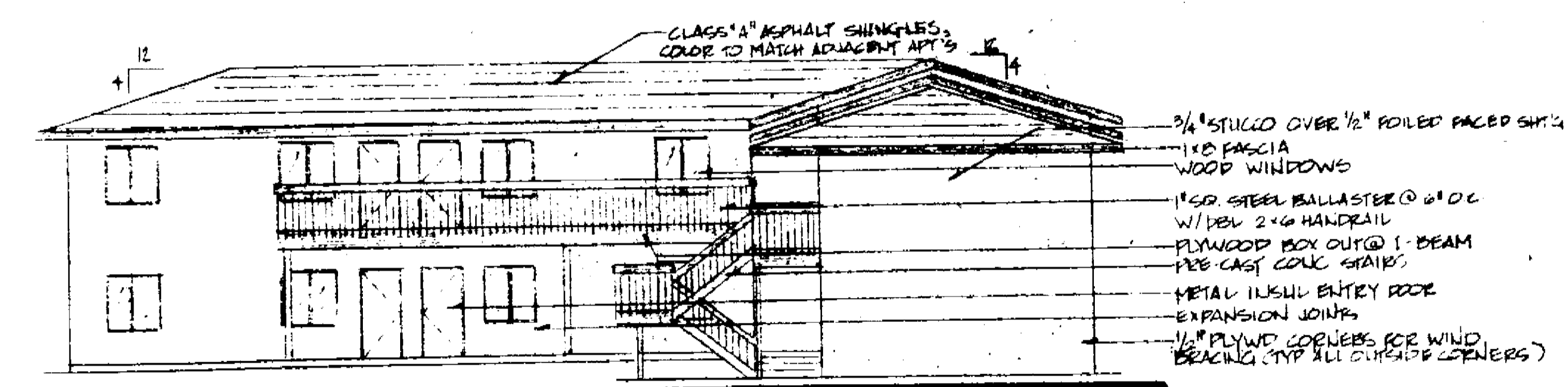


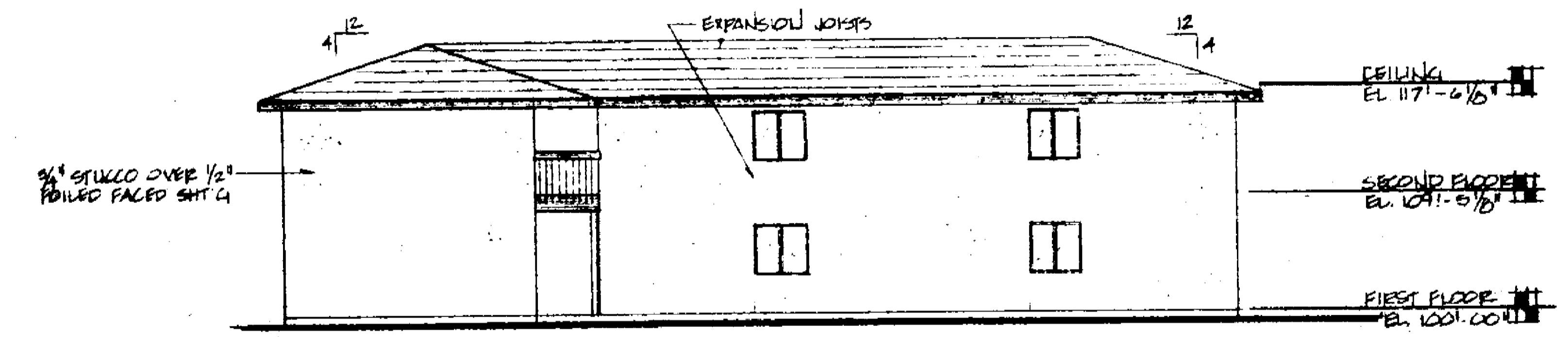
1 WEST ELEVATION
 1/8" = 1'-0"



2 EAST ELEVATION
 1/8" = 1'-0"



3 SOUTH ELEVATION
 1/8" = 1'-0"



4 NORTH ELEVATION
 1/8" = 1'-0"

NOTE: ELEVATIONS ARE FOR REFERENCE ONLY. SEE GRADING PLAN.

	BUILDING ELEVATIONS NEW MOORE COMPLEX INTERSECTION, ROAD 2, HIGHWAY 44 POE 1 GRACE CHURCH, DENVER 25 MARION ST. DENVER 1972-11-01	DATE: 11/1/78 DRAWN BY: [illegible] CHECKED BY: [illegible]
	T. J. GUMMINS & ASSOCIATES ARCHITECTS 1725 1/2 GLENVIEW ST. DENVER, CO. 80202	