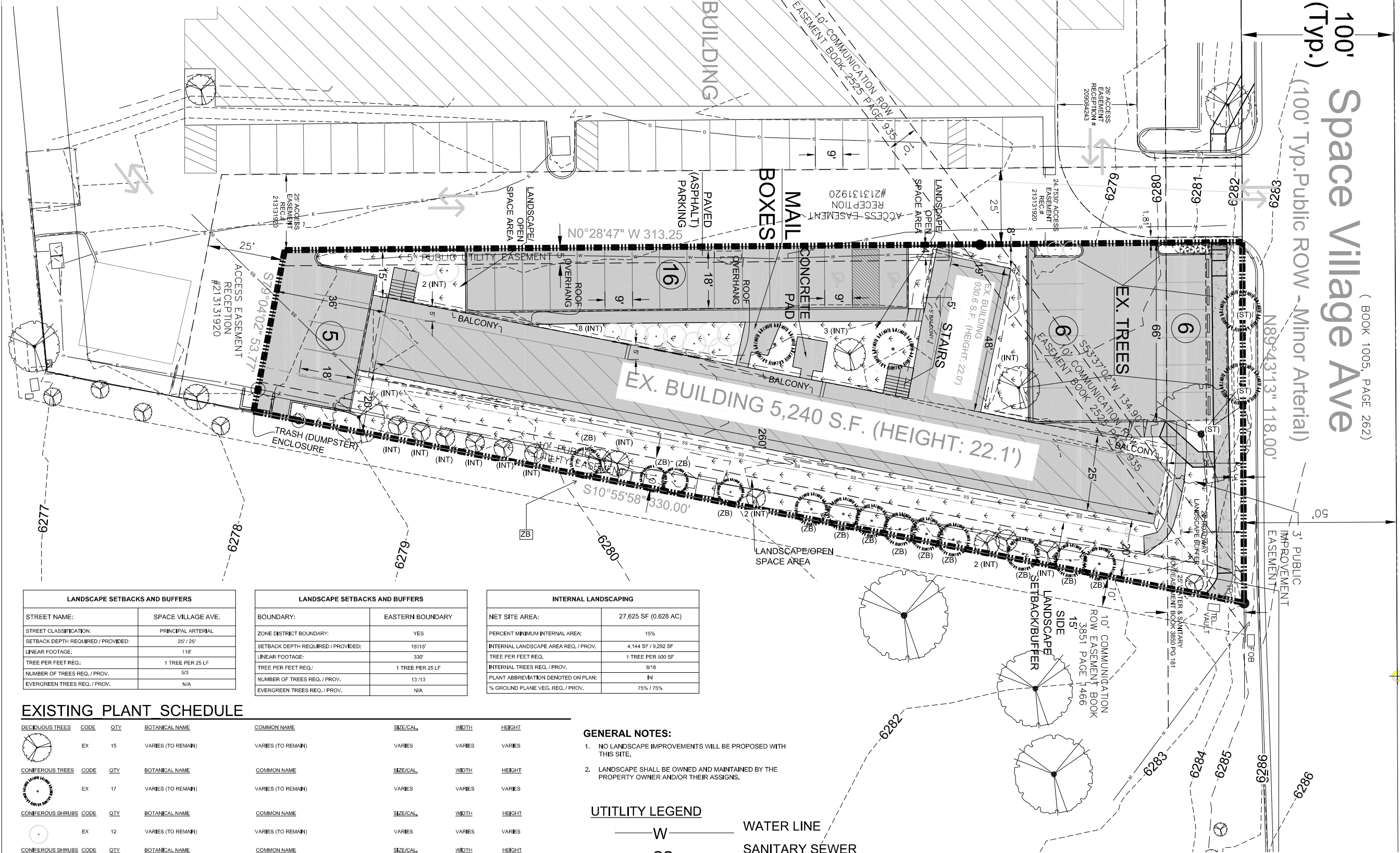


SPACE VILLAGE APARTMENTS

LANDSCAPE PLAN

SITUATED IN A PORTION OF THE NORTHWEST QUARTER OF SECTION 17, TOWNSHIP 14 SOUTH, RANGE 65 WEST
OF THE 6TH P.M., COUNTY OF EL PASO, STATE OF COLORADO



LANDSCAPE SETBACKS AND BUFFERS	
STREET NAME:	SPACE VILLAGE AVE.
STREET CLASSIFICATION:	PRINCIPAL ARTERIAL
SETBACK DEPTH REQUIRED / PROVIDED:	25' / 25'
LINEAR FOOTAGE:	118'
TREE PER FEET REQ.:	1 TREE PER 25 LF
NUMBER OF TREES REQ. / PROV.:	5/3
EVERGREEN TREES REQ. / PROV.:	N/A

LANDSCAPE SETBACKS AND BUFFERS	
BOUNDARY:	EASTERN BOUNDARY
ZONE DISTRICT BOUNDARY:	YES
SETBACK DEPTH REQUIRED / PROVIDED:	15'/15'
LINEAR FOOTAGE:	330'
TREE PER FEET REQ.:	1 TREE PER 25 LF
NUMBER OF TREES REQ. / PROV.:	13/13
EVERGREEN TREES REQ. / PROV.:	N/A

INTERNAL LANDSCAPING	
NET SITE AREA:	27,625 SF (0.628 AC)
PERCENT MINIMUM INTERNAL AREA:	15%
INTERNAL LANDSCAPE AREA REQ. / PROV.:	4,144 SF / 9,292 SF
TREE PER FEET REQ.:	1 TREE PER 500 SF
INTERNAL TREES REQ. / PROV.:	8/16
PLANT ABBREVIATION DENOTED ON PLAN:	IN
% GROUND PLANE VEG. REQ. / PROV.:	75% / 75%

EXISTING PLANT SCHEDULE

DECIDUOUS TREES	CODE	QTY	BOTANICAL NAME	COMMON NAME	SIZE/CAL.	WIDTH	HEIGHT	
	EX	15	VARIES (TO REMAIN)	VARIES (TO REMAIN)	VARIES	VARIES	VARIES	
CONIFEROUS TREES	CODE	QTY	BOTANICAL NAME	COMMON NAME	SIZE/CAL.	WIDTH	HEIGHT	
	EX	17	VARIES (TO REMAIN)	VARIES (TO REMAIN)	VARIES	VARIES	VARIES	
CONIFEROUS SHRUBS	CODE	QTY	BOTANICAL NAME	COMMON NAME	SIZE/CAL.	WIDTH	HEIGHT	
	EX	12	VARIES (TO REMAIN)	VARIES (TO REMAIN)	VARIES	VARIES	VARIES	
CONIFEROUS SHRUBS	CODE	QTY	BOTANICAL NAME	COMMON NAME	SIZE/CAL.	WIDTH	HEIGHT	
	EX	3	VARIES (TO REMAIN)	VARIES (TO REMAIN)	VARIES	VARIES	VARIES	
GROUND COVERS	CODE	QTY	BOTANICAL NAME	COMMON NAME	TYPE	INSTALL RATE	WEED FABRIC	MFR.
	EXISTING	9,867 SF	INSTALLED BY OTHERS		N/A	N/A	N/A	N/A

GENERAL NOTES:

- NO LANDSCAPE IMPROVEMENTS WILL BE PROPOSED WITH THIS SITE.
- LANDSCAPE SHALL BE OWNED AND MAINTAINED BY THE PROPERTY OWNER AND/OR THEIR ASSIGNS.

UTILITY LEGEND

— W —	WATER LINE
— SS —	SANITARY SEWER
— E —	ELECTRIC
— G —	GAS

Kimley-Horn
© 2020 KIMLEY-HORN AND ASSOCIATES, INC.
2 NORTH NEVADA AVENUE, SUITE 300
DENVER, CO 80202
PHONE: 718-453-0880

Space Village Apartments
SITE DEVELOPMENT PLAN
Colorado Springs, CO

REV #	REVISIONS	DATE
1	1ST COUNTY COMMENT REVISIONS	6.24.20
2	2ND COUNTY COMMENT REVISIONS	12.3.21
3		
4		
5		
6		
7		
8		
9		

DESIGNED	RSF	DATE
02.14.19	02.14.19	6.24.20
DRAWN	RSF	DATE
02.14.19	02.14.19	6.24.20
CHECKED	RSF	DATE
02.14.19	02.14.19	6.24.20
PROJECT NUMBER: 3837.00		

LANDSCAPE PLAN
DP3

