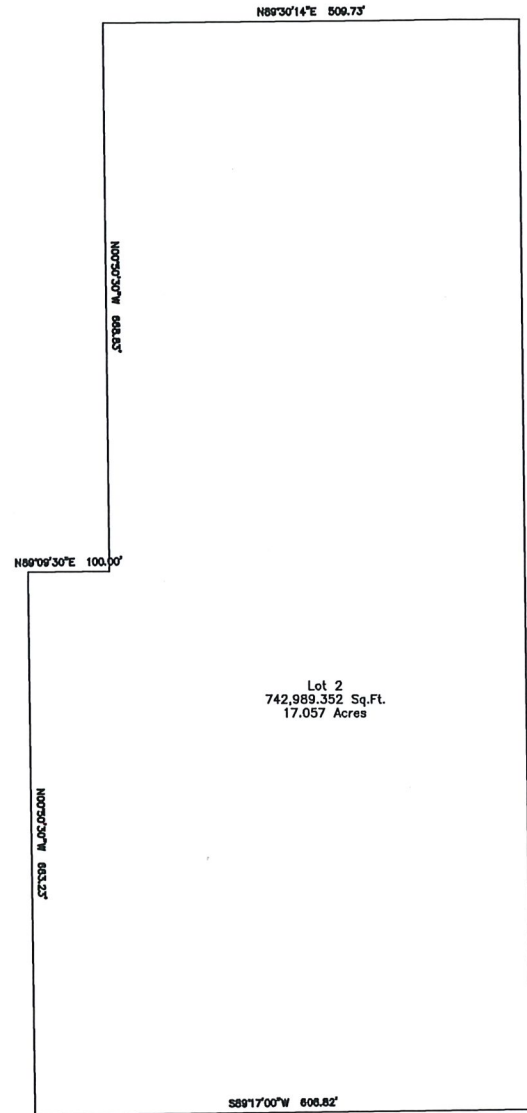


RENEHAN SUBDIVISION

A PORTION OF THE EAST HALF OF THE SOUTHEAST QUARTER OF SECTION 13,
TOWNSHIP 12 SOUTH, RANGE 66 WEST OF THE 6TH P.M.,
IN EL PASO COUNTY, COLORADO

CLOSURE SHEETS – 01/26/23

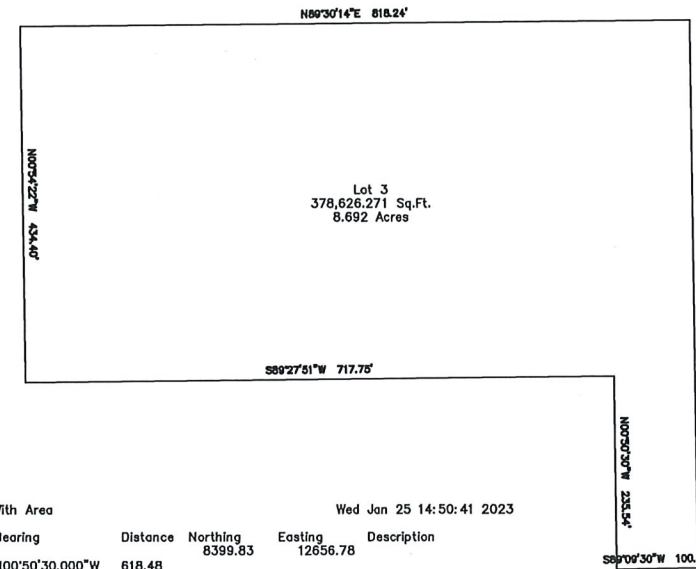


Lot 2
742,989.352 Sq.Ft.
17.057 Acres

Inverse With Area Wed Jan 25 14:51:28 2023

PntNo	Bearing	Distance	Northing	Easting	Description
	N00°50'30.000\"W	663.23	9108.04	12649.72	
	N89°09'30.000\"E	100.00	9771.20	12639.98	
	N00°50'30.000\"W	668.83	9772.67	12739.97	
	N89°30'14.000\"E	509.73	10441.43	12730.15	
	S00°43'00.000\"E	1330.32	10445.84	13239.85	
	S89°17'00.000\"W	606.82	9115.63	13256.49	
			9108.04	12649.72	

Closure Error Distance> 0.0000
Total Distance Inversed> 3878.92
Area: 742989.352 Sq.Ft., 17.057 Acres

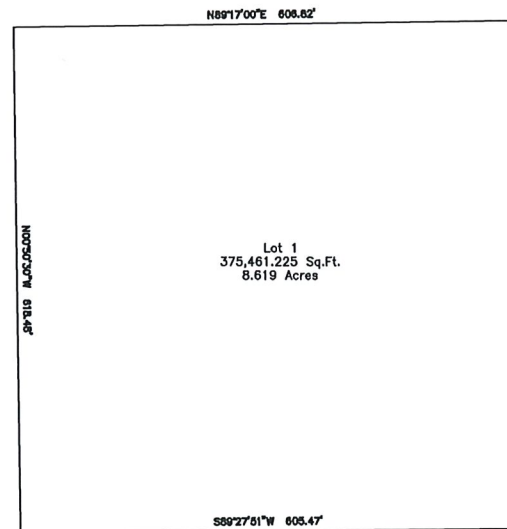


Lot 3
378,626.271 Sq.Ft.
8.692 Acres

Inverse With Area Wed Jan 25 14:52:08 2023

PntNo	Bearing	Distance	Northing	Easting	Description
	N00°54'22.159\"W	434.40	11333.88	11963.41	
	N89°30'14.000\"E	818.24	11768.23	11956.54	
	S00°50'30.000\"E	668.83	11775.32	12774.75	
	S89°09'30.000\"W	100.00	11106.55	12784.58	
	N00°50'30.000\"W	235.54	11105.08	12684.59	
	S89°27'51.000\"W	717.75	11340.60	12681.13	
			11333.88	11963.41	

Closure Error Distance> 0.0000
Total Distance Inversed> 2974.77
Area: 378626.271 Sq.Ft., 8.692 Acres



Lot 1
375,461.225 Sq.Ft.
8.619 Acres

Inverse With Area Wed Jan 25 14:50:41 2023

PntNo	Bearing	Distance	Northing	Easting	Description
	N00°50'30.000\"W	618.48	8399.83	12656.78	
	N89°17'00.000\"E	606.82	9018.24	12647.69	
	S00°43'00.000\"E	620.38	9025.83	13254.46	
	S89°27'51.000\"W	605.47	8405.50	13262.22	
			8399.83	12656.78	

Closure Error Distance> 0.0000
Total Distance Inversed> 2451.15
Area: 375461.225 Sq.Ft., 8.619 Acres

20' R.O.W. PRESERVATION EASEMENT: 605.47' X 20' = 12,109 Sq Ft., 0.278 Acres