

DESIGNED BY:
JUM

DATE: 11/8/18

DRAWN BY:
JUM

DATE: 11/8/18

CHECKED BY:

DATE:

SCALE:
HORIZ: 1"=50'
VERT: 1"=5'

STATION:
FROM: 0+00
TO: 8+00

SPRINGS AT WATERVIEW - AMENDED STORM

GRINNELL DITCH PROFILE

| REVISIONS: | NO. | DESCRIPTION | DATE |
|------------|-----|-------------|------|
| | | | |
| | | | |
| | | | |
| | | | |
| | | | |
| | | | |
| | | | |
| | | | |
| | | | |

PROJECT NUMBER:
0102.2

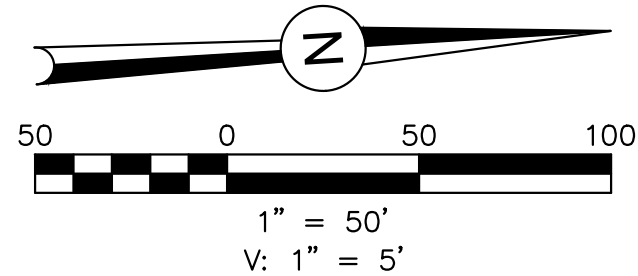
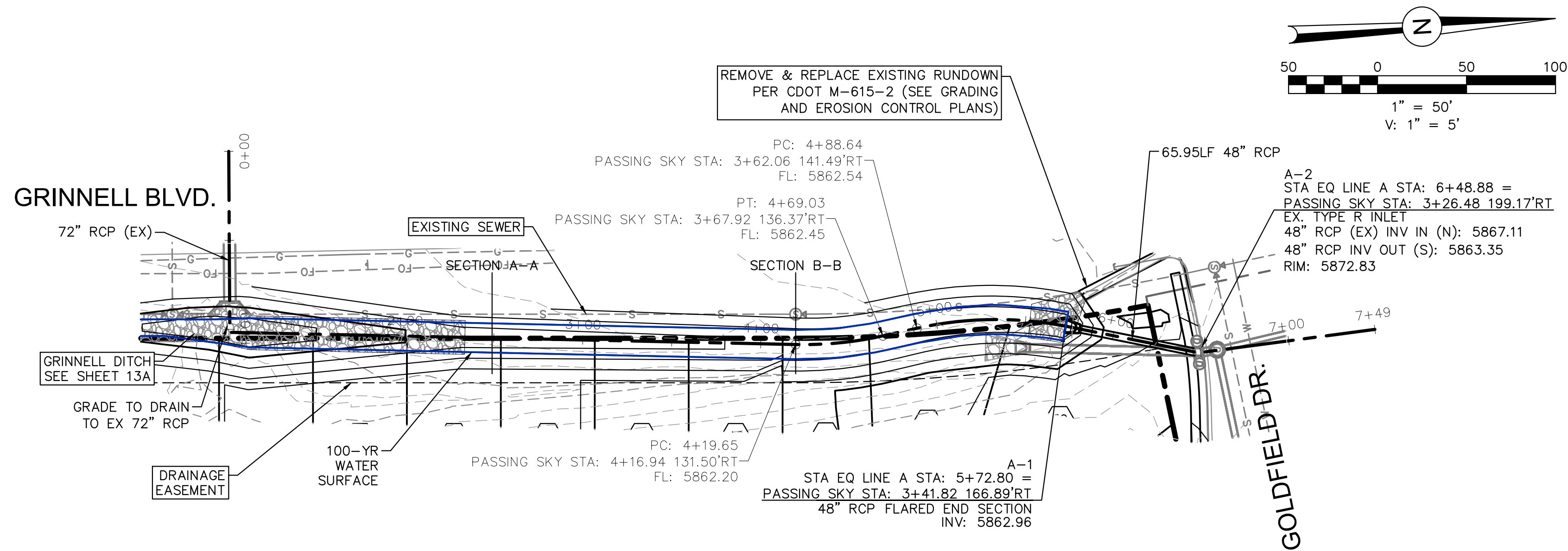
SHEET
13A OF **19**

DSE
Dakota Springs
Engineering

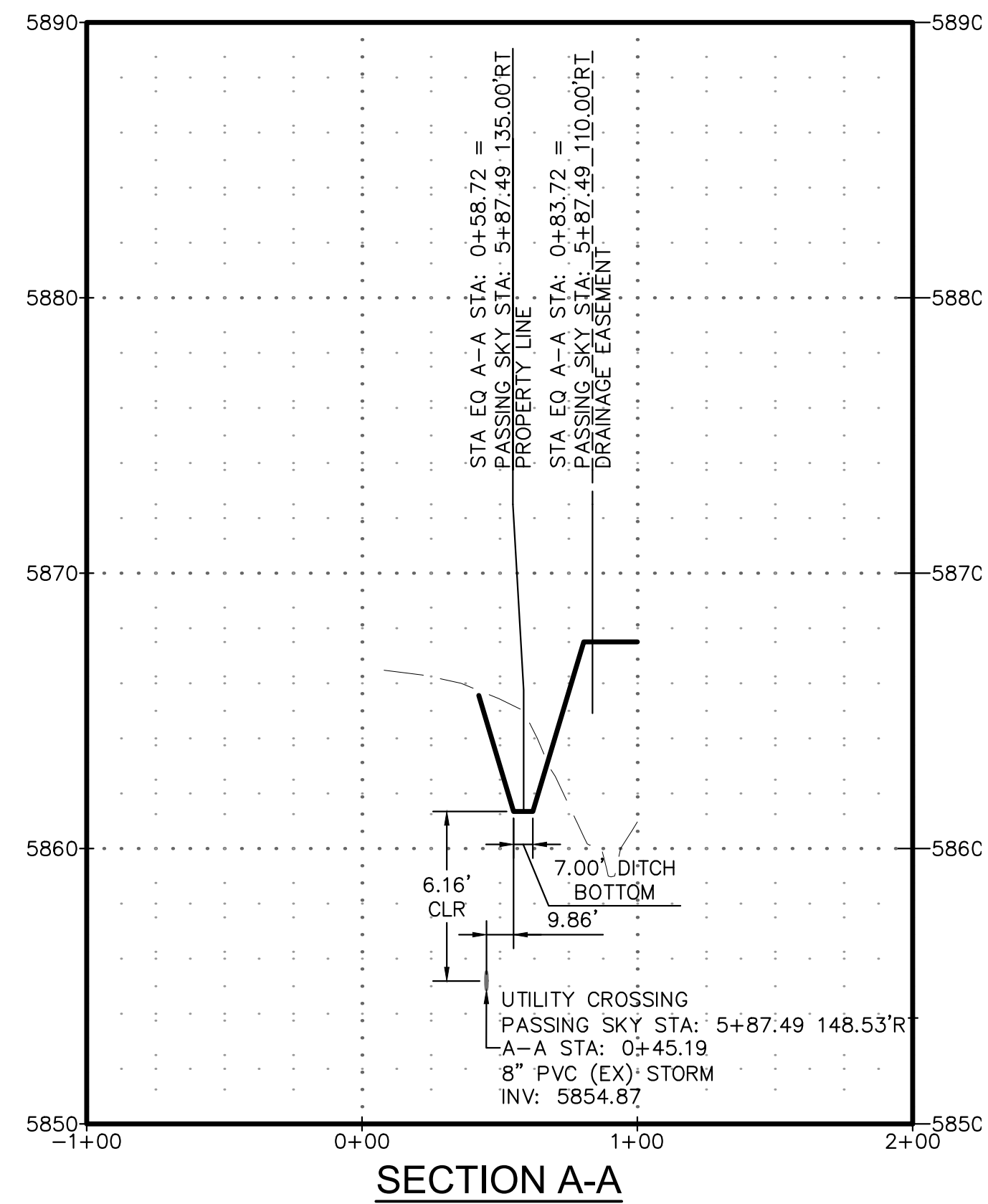
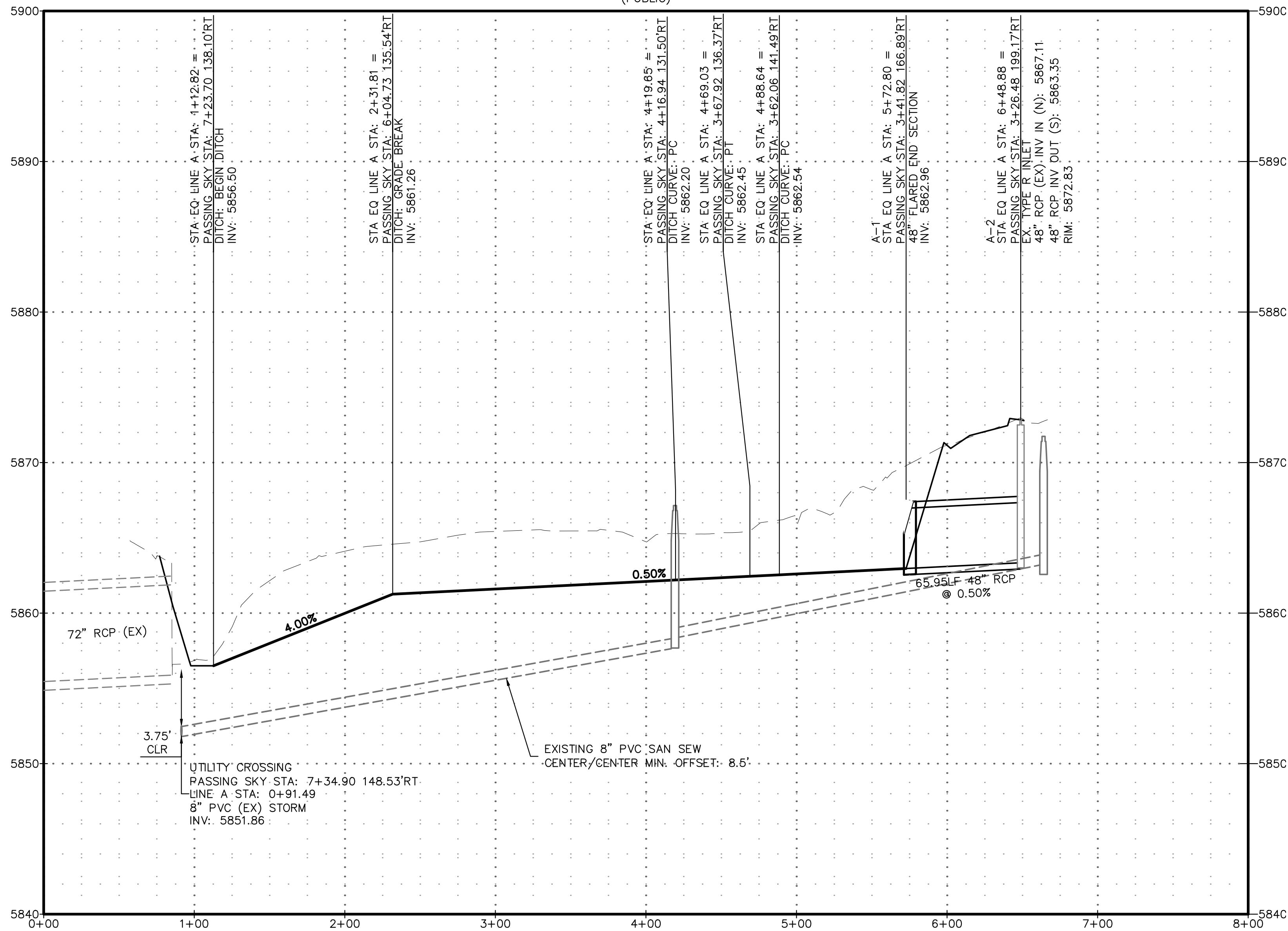
31 N. TEJON, SUITE 500
COLORADO SPRINGS, CO 80903
P: (719) 227-7388
F: (719) 227-7392

JEAD
CONSULTING, INC.

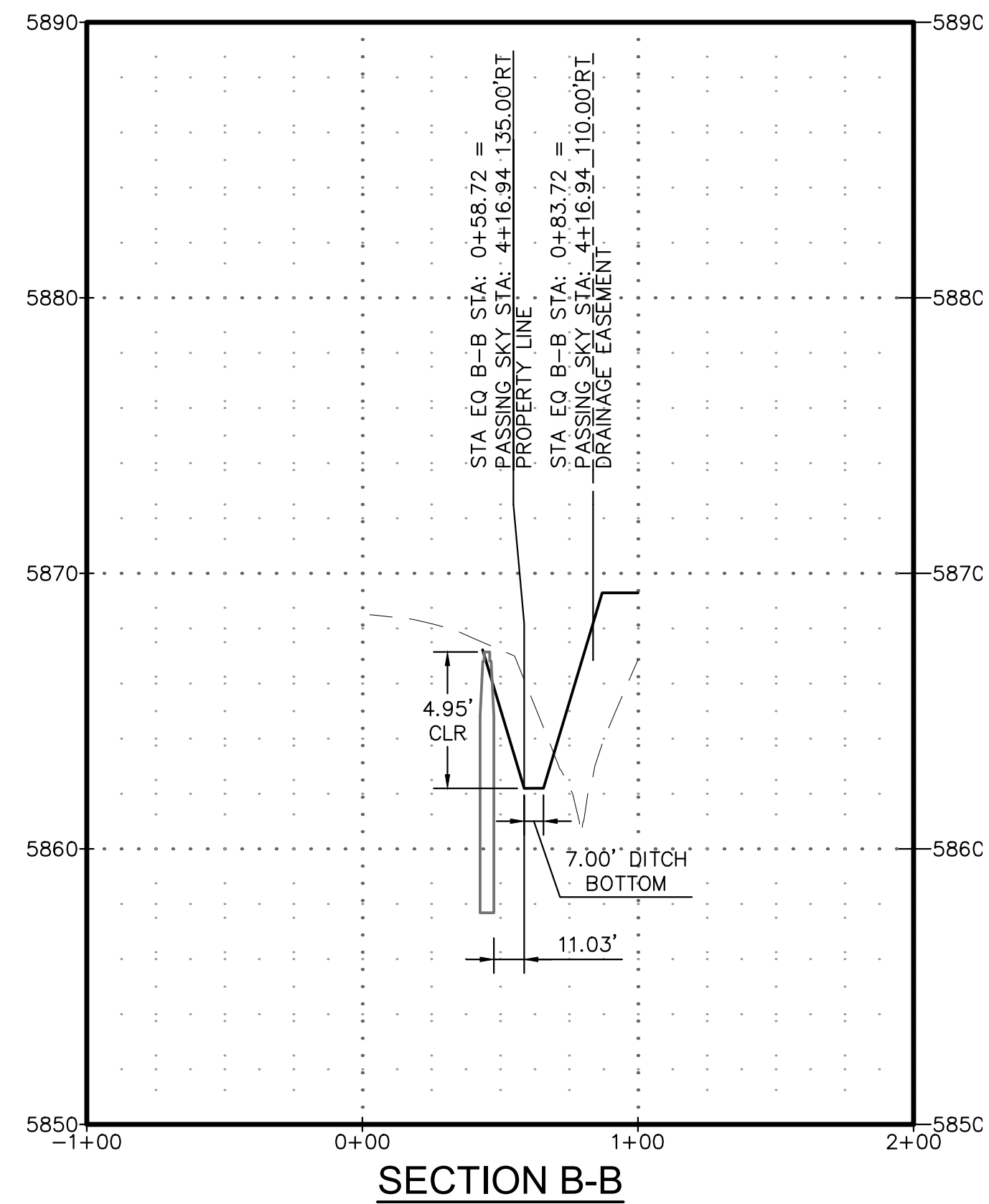
48 HOURS BEFORE YOU DIG,
CALL UTILITY LOCATORS
1-800-922-1987
CITY OF COLORADO SPRINGS UTILITIES
GAS, ELECTRIC, WATER AND WASTEWATER
719-377-0002



STORM LINE A
(PUBLIC)



SECTION A-A



SECTION B-B

| | | | |
|--|-------------|------------------------------|--|
| DESIGNED BY: JUM DATE: 11/8/18 | | SCALE: 1"=50' | |
| DRAWN BY: JUM DATE: 11/8/18 | | HORIZ: 1"=50' | |
| CHECKED BY: | | VERT: 1"=5' | |
| DATE: | | STATION: FROM: 0+00 TO: 8+00 | |
| SPRINGS AT WATERVIEW - AMENDED STORM | | | |
| STORM A PROFILE | | | |
| REVISIONS: | | | |
| NO. | DESCRIPTION | DATE | |
| PROJECT NUMBER: 0102.2 | | | |
| SHEET 13 OF 19 | | | |

DSE Dakota Springs Engineering

31 N. TEJON, SUITE 500
COLORADO SPRINGS, CO 80903
P: (719) 227-7388
F: (719) 227-7392

48 HOURS BEFORE YOU DIG,
CALL UTILITY LOCATORS
1-800-922-1987
CITY OF COLORADO SPRINGS UTILITIES
GAS, ELECTRIC, WATER AND WASTEWATER

J&A
J&A CONSULTING, INC.
719-377-0002

