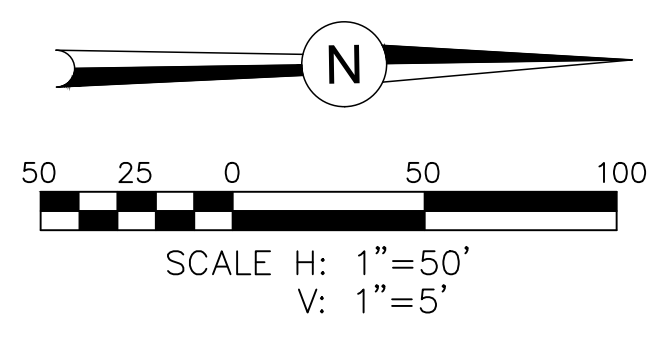
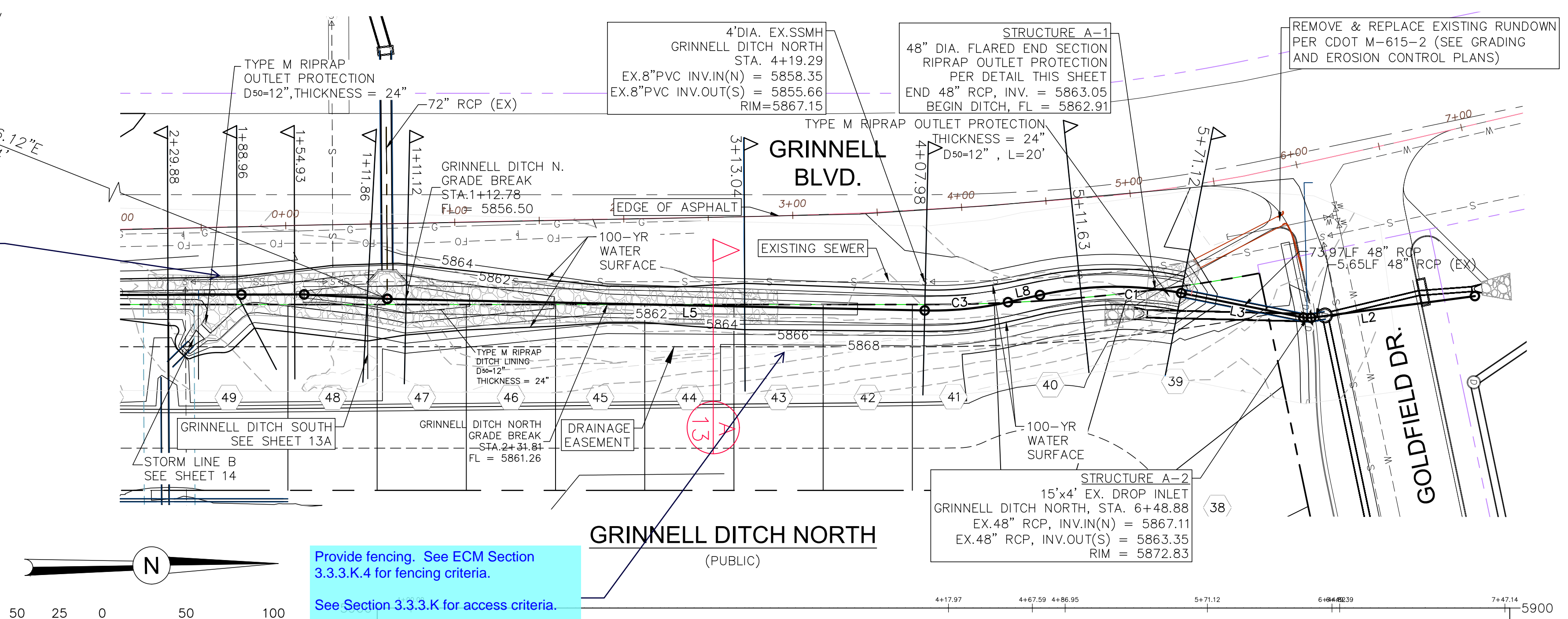


WEST 1/4 CORNER
SEC. 7, T15S, R65W
N: 7782.9326
E: 876.5491

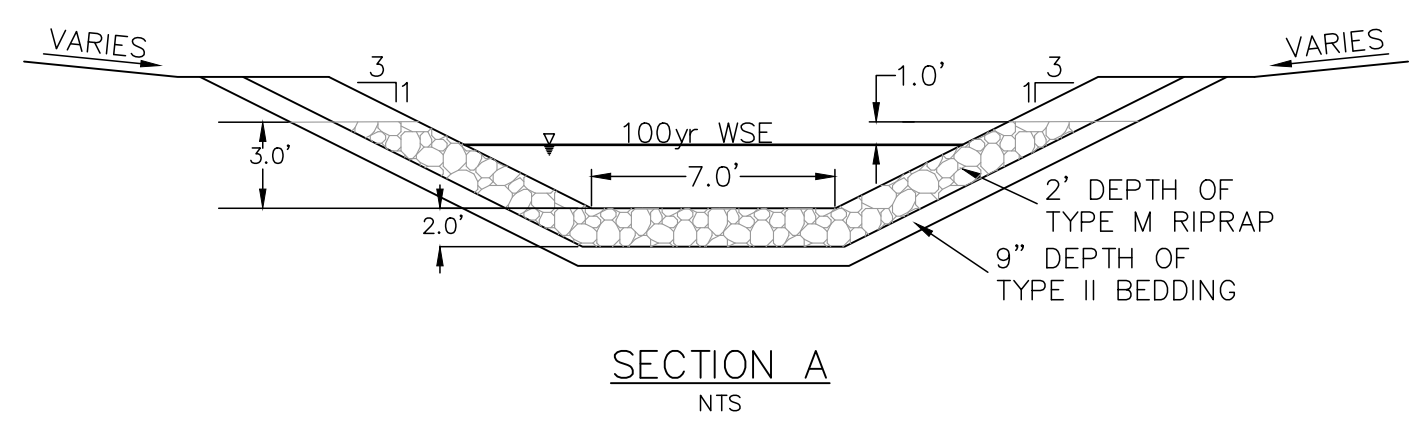
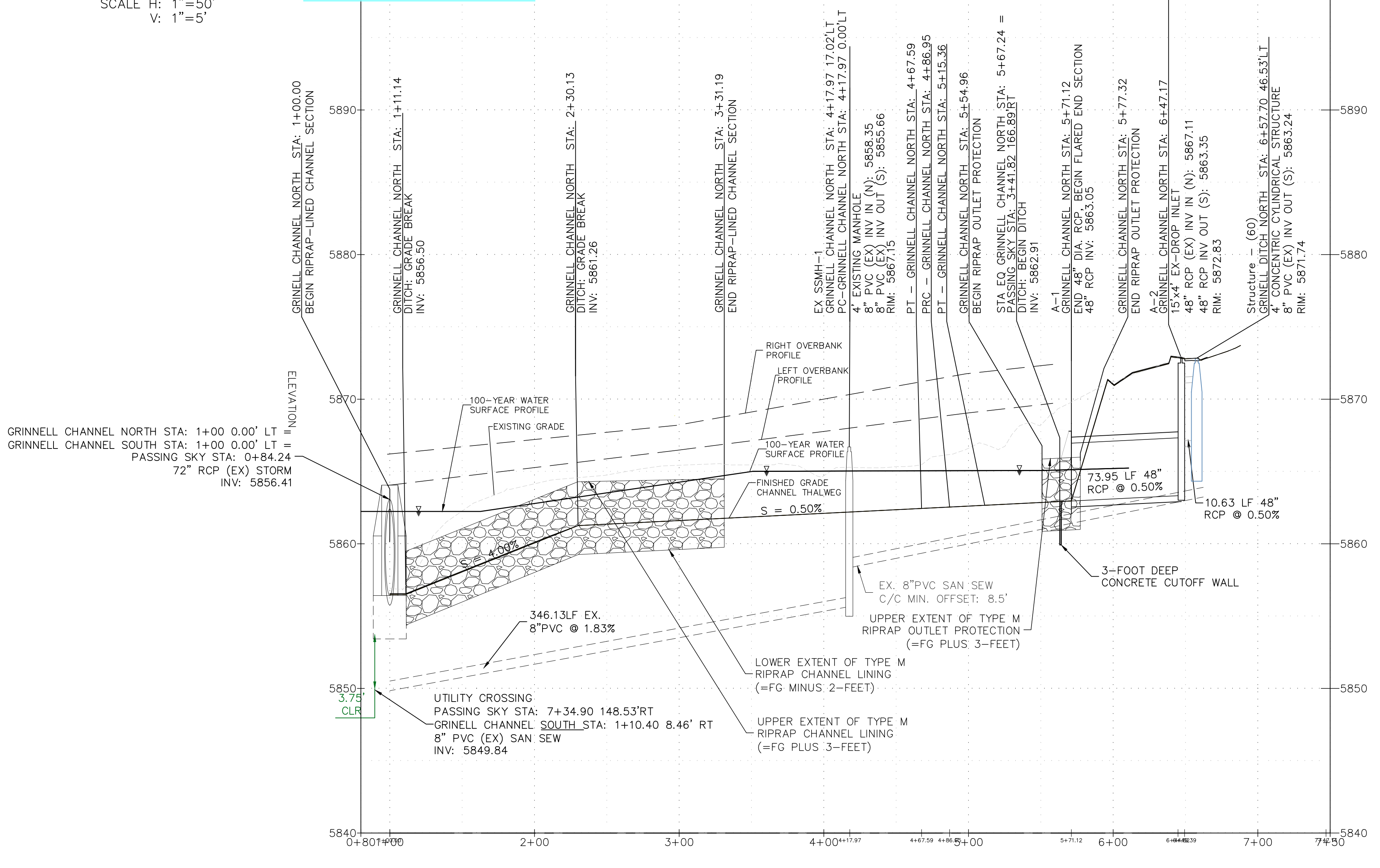
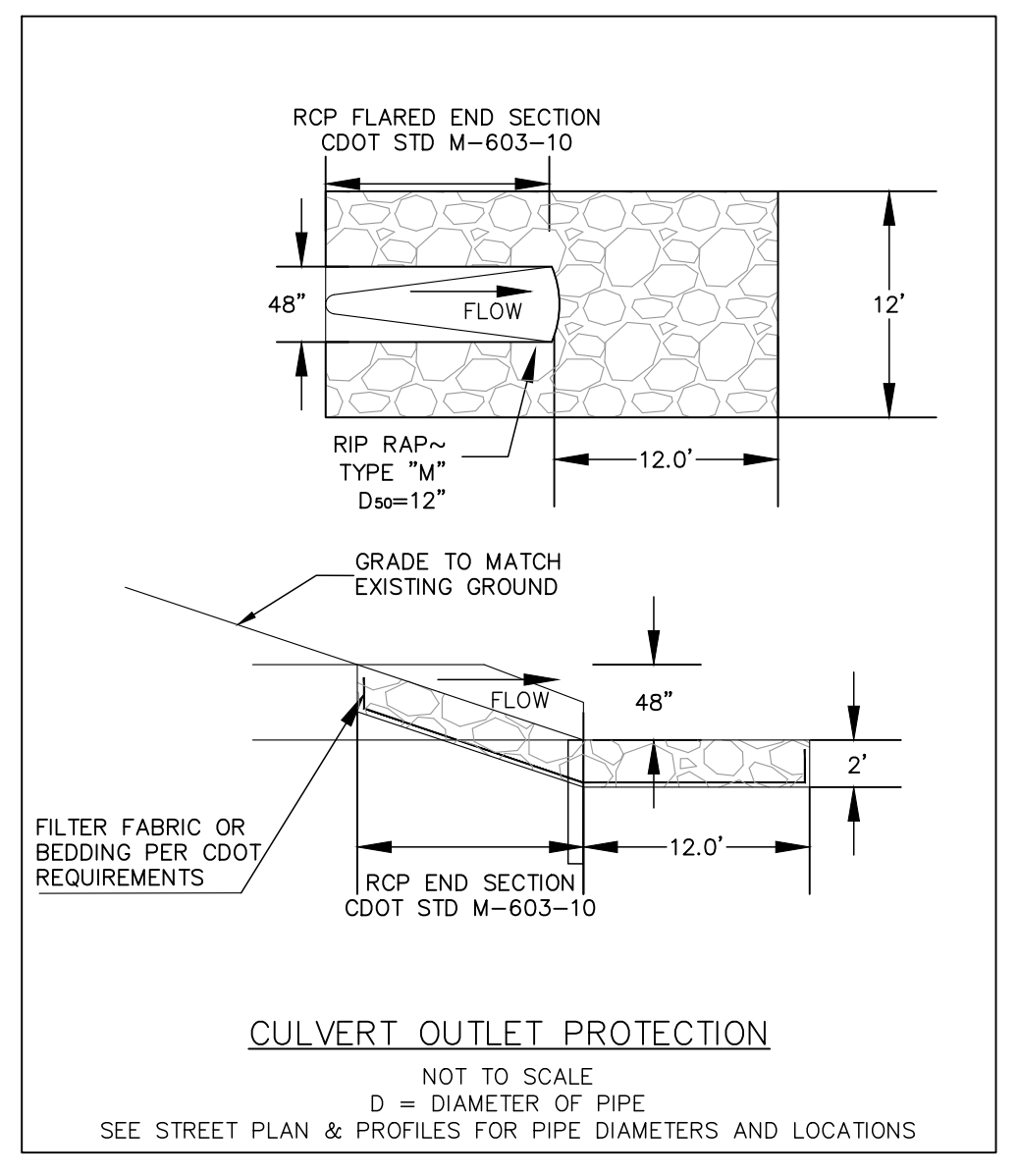
Draw the clear zone.
Fencing to be outside
the clear zone. This
is currently a rural
minor arterial with 30'
clear zone.



HORIZONTAL CONTROL FOR GRINNELL DITCH-NORTH ALIGNMENT

MEASURED FROM THE WEST 1/4 CORNER OF SECTION 7, T15S, R65W, TO STA. 1+00 OF THE GRINNELL CHANNEL NORTH ALIGNMENT; THENCE N25°10'16.12"E, A DISTANCE OF 971.64'; THE FOLLOWING TABLE PROVIDES THE HORIZONTAL CONTROL FOR THE GRINNELL DITCH NORTH ALIGNMENT:

Grinnell Ditch North				
Number	Radius	Length	Line/Chord Direction	delta (Δ)
C3	205.00	49.38	N2° 10' 51.07"W	13.8004
L8		19.61	N9° 04' 51.71"W	
L3		76.08	N14° 49' 16.03"E	
L2		100.00	N4° 04' 35.11"W	
C1	205.00	84.16	N2° 40' 49.87"E	23.5231
L5		317.97	N4° 43' 09.58"E	



DESIGNED BY: JUM DATE: 5/28/19
DRAWN BY: CEB DATE: 3/11/20
CHECKED BY: CC DATE: 3/11/20

SCALE: HORIZ: 1" = 50'
VERT: 1" = 5'
STATION: FROM: 1+00 TO: 7+50

SPRINGS AT WATERVIEW - AMENDED STORM

GRINNELL DITCH NORTH - PLAN / PROFILE

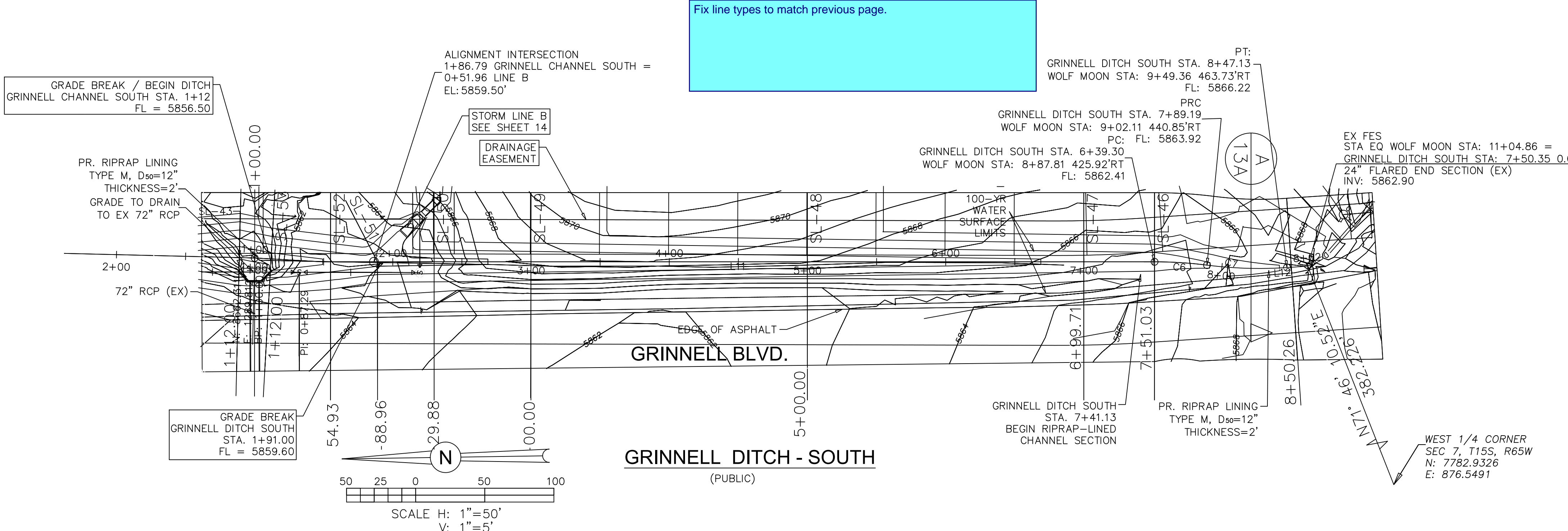
REVISIONS:

NO.	DESCRIPTION	DATE

PROJECT NUMBER: 0102.2
SHEET 13 OF 19

DSE Dakota Springs Engineering
31 N. TOLON, SUITE 518
COLORADO SPRINGS, CO 80903
P: (719) 227-7392
F: (719) 227-7392

48 HOURS BEFORE YOU DIG.
CALL UTILITY LOCATORS
1-800-922-1987
OR 719-586-7273
CITY OF COLORADO SPRINGS
GAS, ELECTRIC, WATER AND WASTEWATER



Fix line types to match previous page.

HORIZONTAL CONTROL FOR GRINNELL DITCH SOUTH

MEASURED FROM THE WEST 1/4 CORNER OF SECTION 7, T15S, R65W, TO STA. 7+49.98 OF THE GRINNELL DITCH SOUTH ALIGNMENT; THENCE N71°46'10.52"E A DISTANCE OF 382.226'; THE FOLLOWING TABLE PROVIDES THE HORIZONTAL CONTROL FOR THE GRINNELL DITCH SOUTH ALIGNMENT:

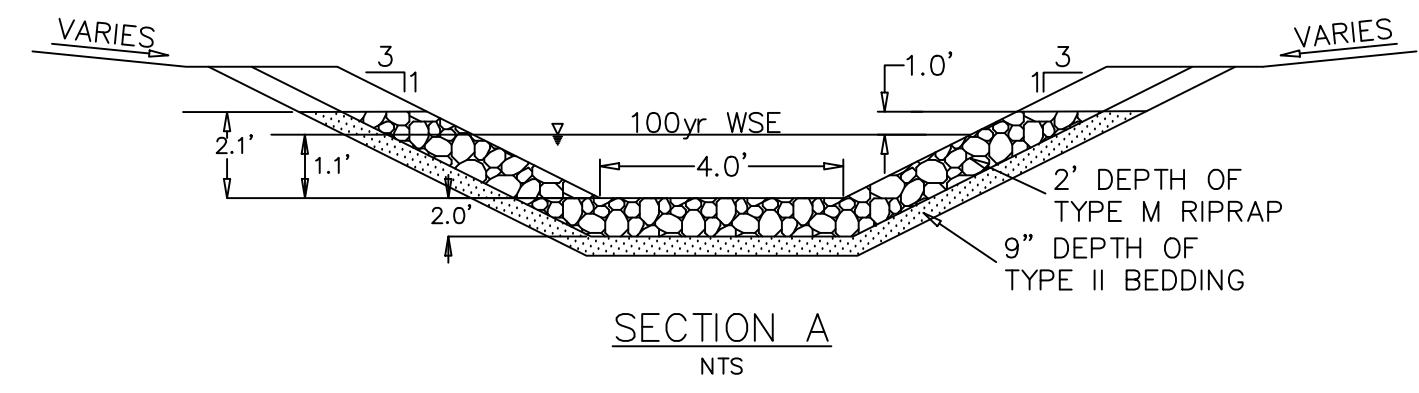
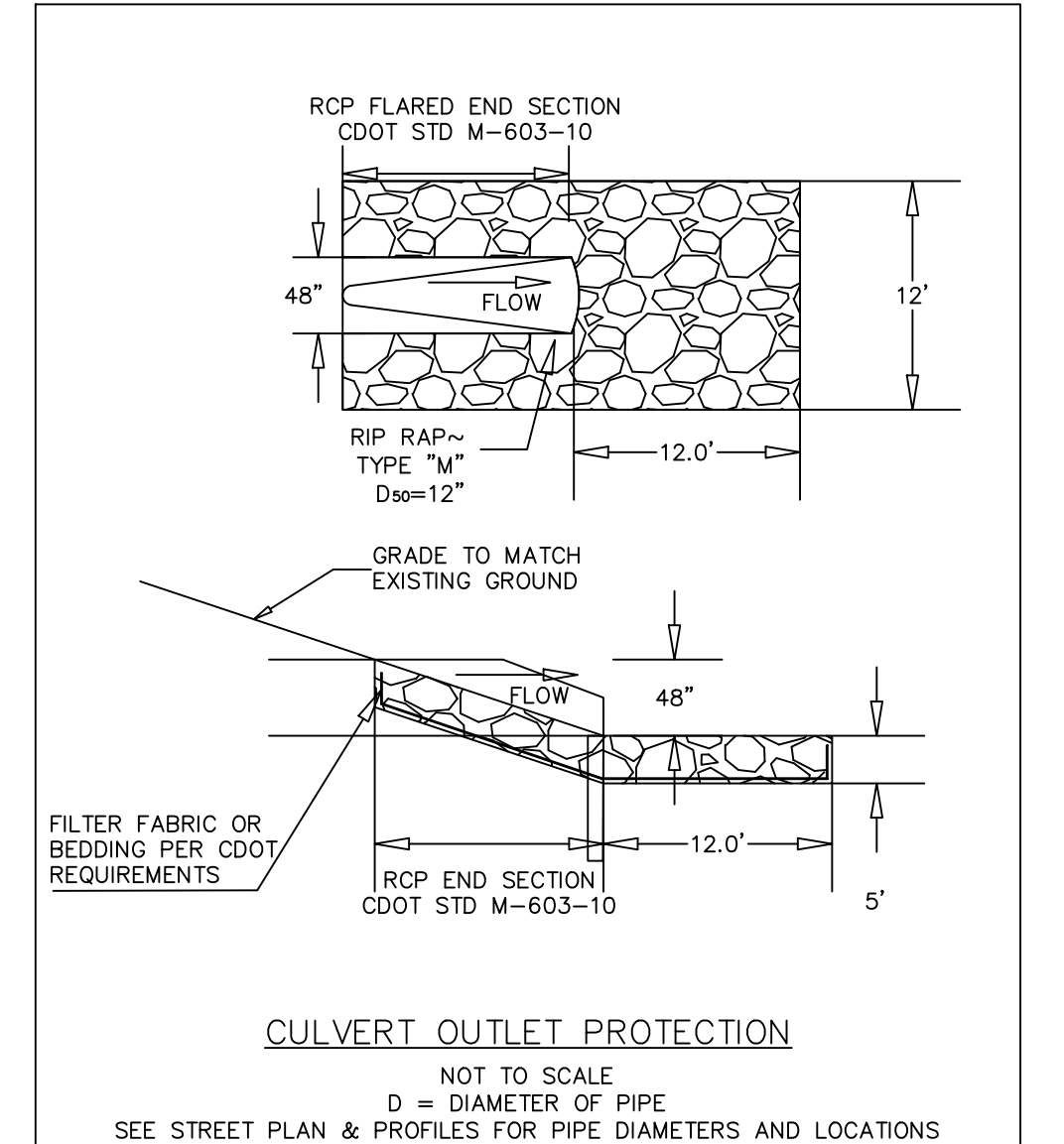
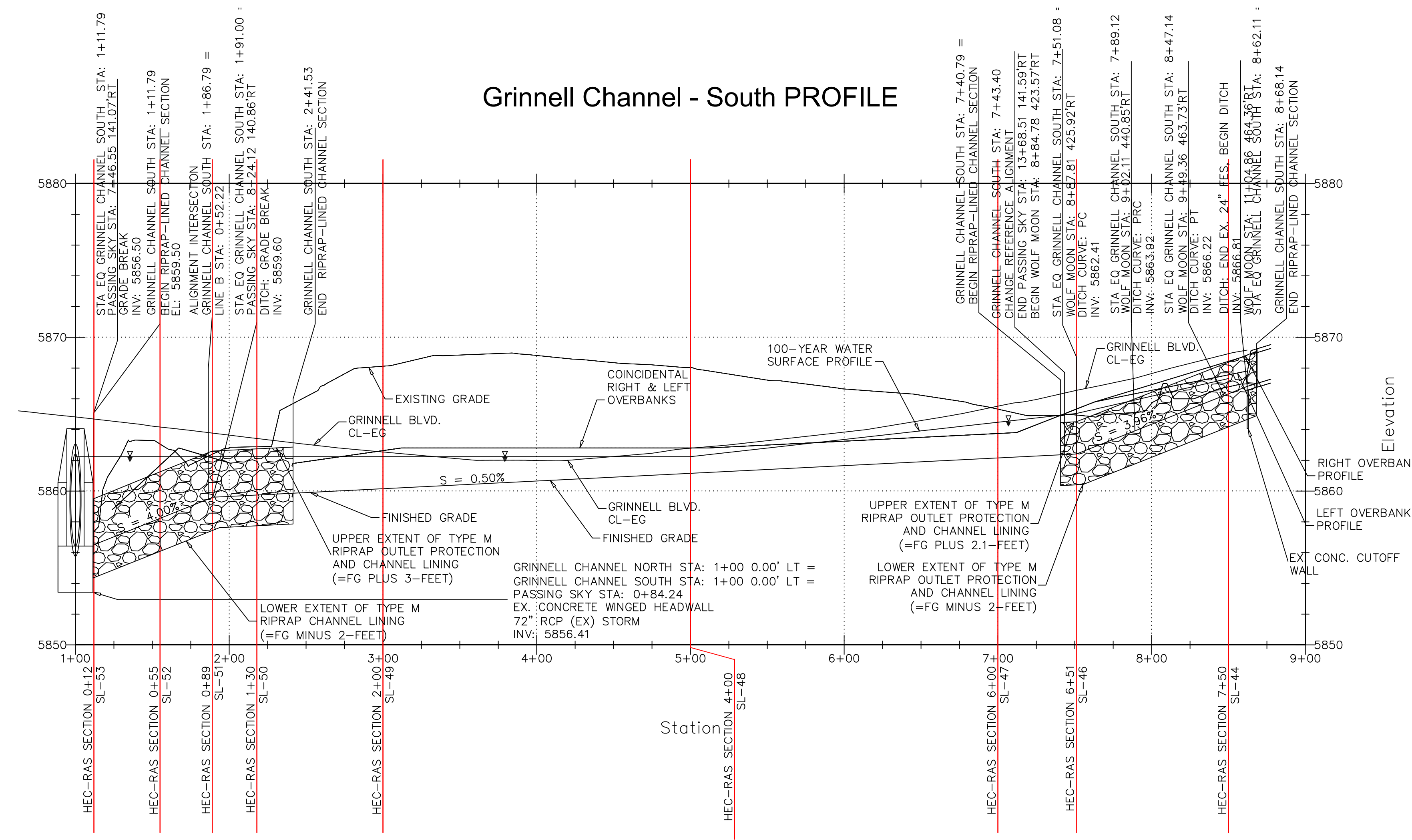
Number	Radius	Length	Line/Chord Direction (Δ)DELTA
L12	14.63	14.63	S0° 28' 49.00"E
C7	300.00	58.01	S5° 03' 34.58"W
C6	300.00	38.04	S6° 58' 01.42"W
L11	639.30	639.30	S3° 20' 04.67"W

DSE Dakota Springs Engineering
31 N. TEJON, SUITE 518
COLORADO SPRINGS, CO 80903
P: (719) 227-7388
F: (719) 227-7392

DESIGNED BY: CEB DATE: 10/28/19
DRAWN BY: CEB DATE: 10/28/19
CHECKED BY: FAK DATE: 10/28/19

SCALE: HORIZ: 1" = 50'
VERT: 1" = 5'
STATION: FROM: 0+00 TO: 8+00

48 HOURS BEFORE YOU DIG.
CALL UTILITY LOCATORS
1-800-922-1987
OR 719-585-7080
CITY OF COLORADO SPRINGS
GAS, ELECTRIC, WATER AND WASTEWATER



Remove reference HEC-RAS sections on the construction plan sheets, keep HEC-RAS reference sections on the P&P included in the drainage letter.

SPRINGS AT WATERVIEW - AMENDED STORM

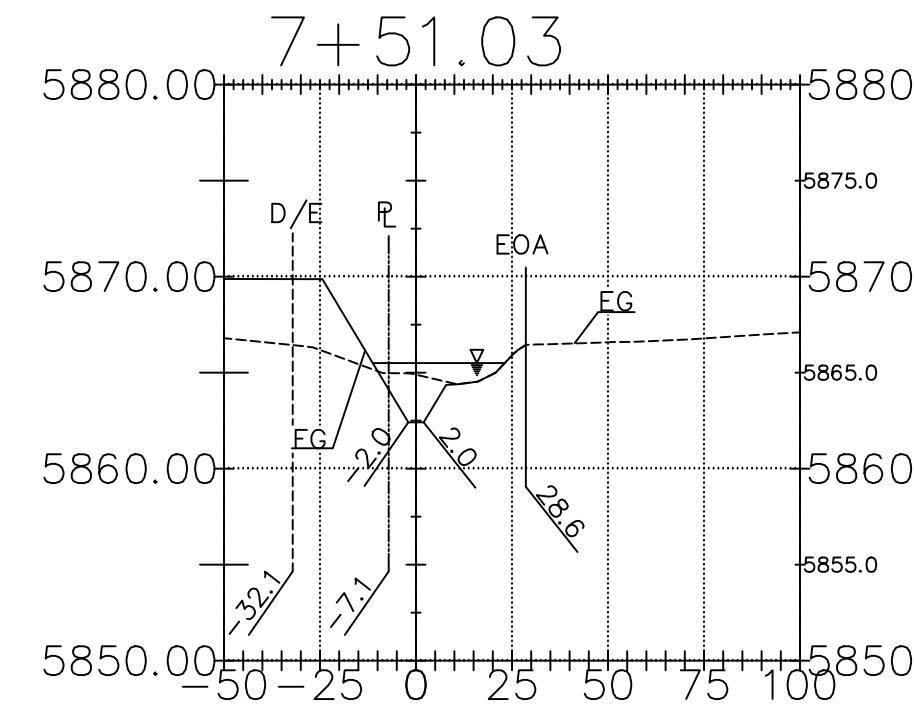
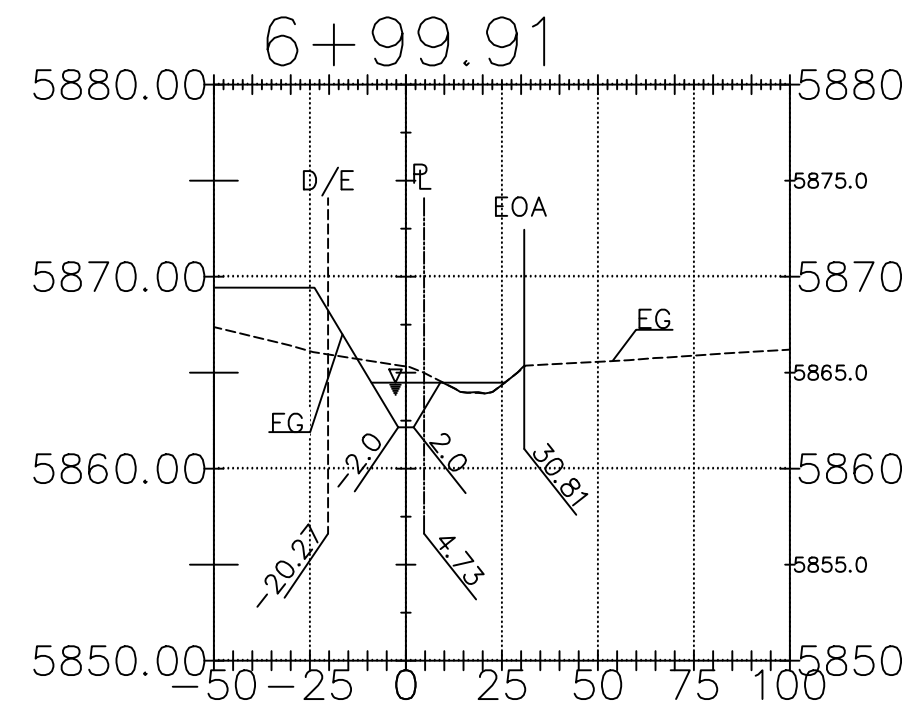
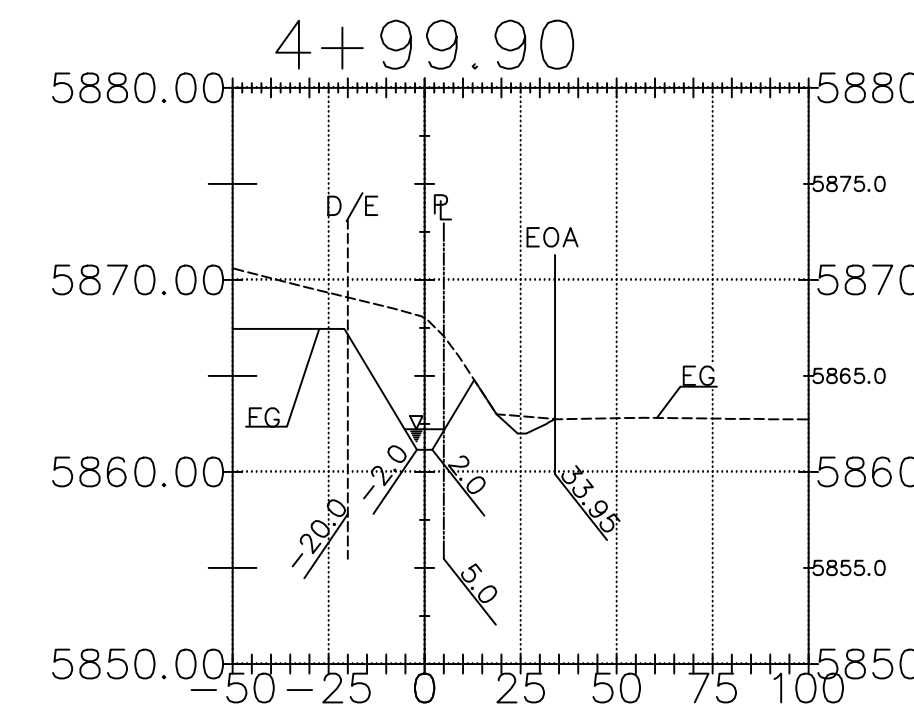
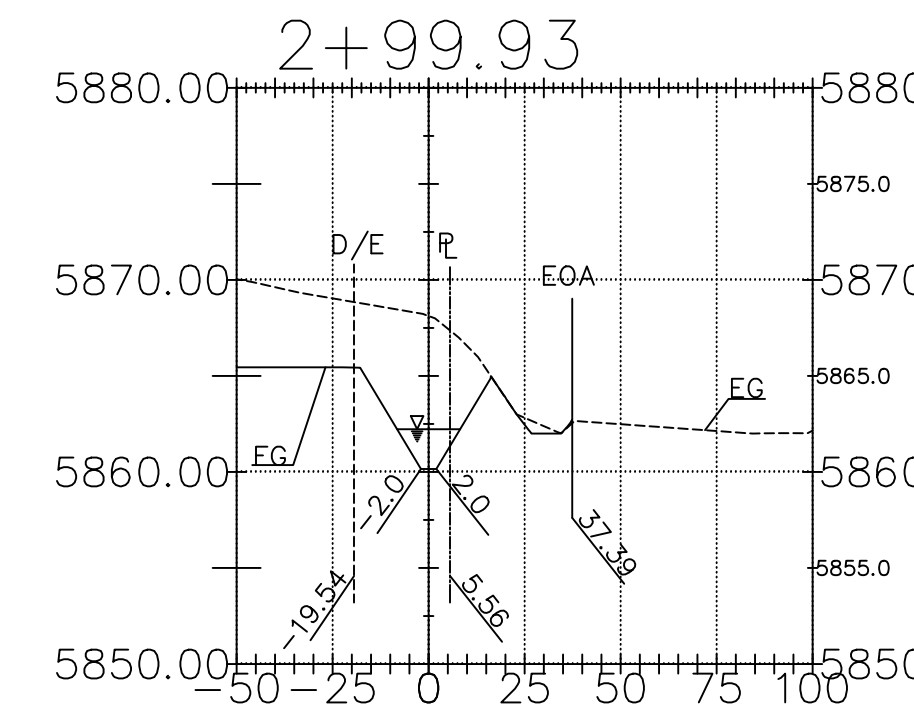
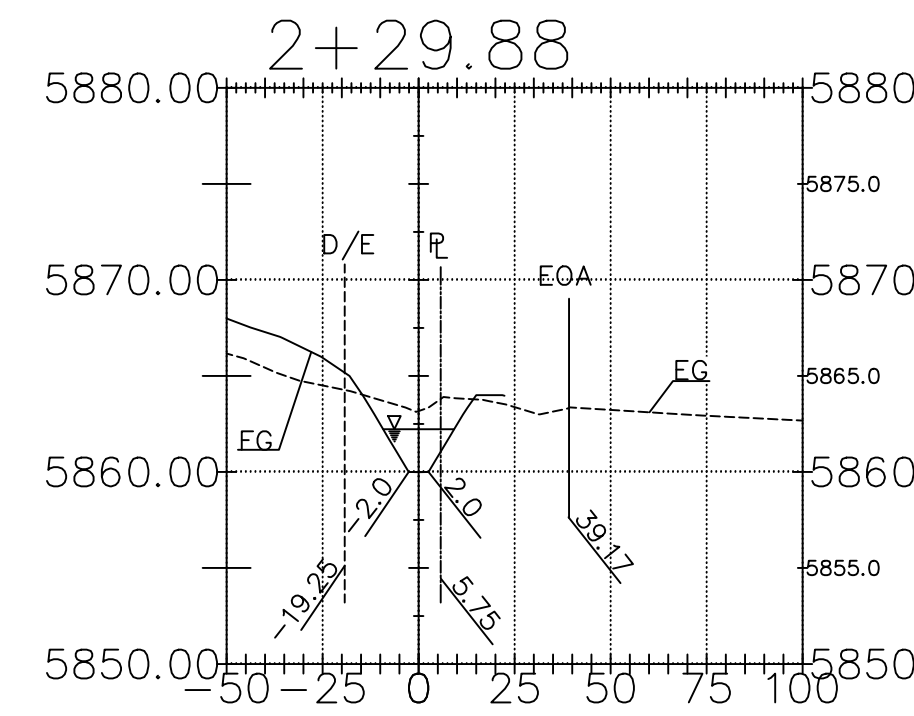
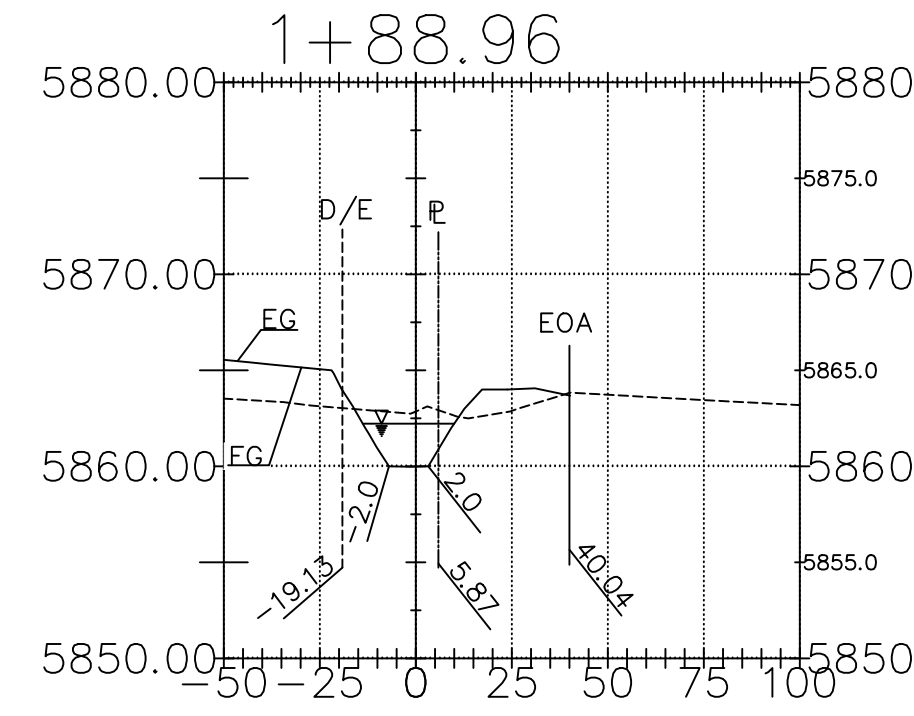
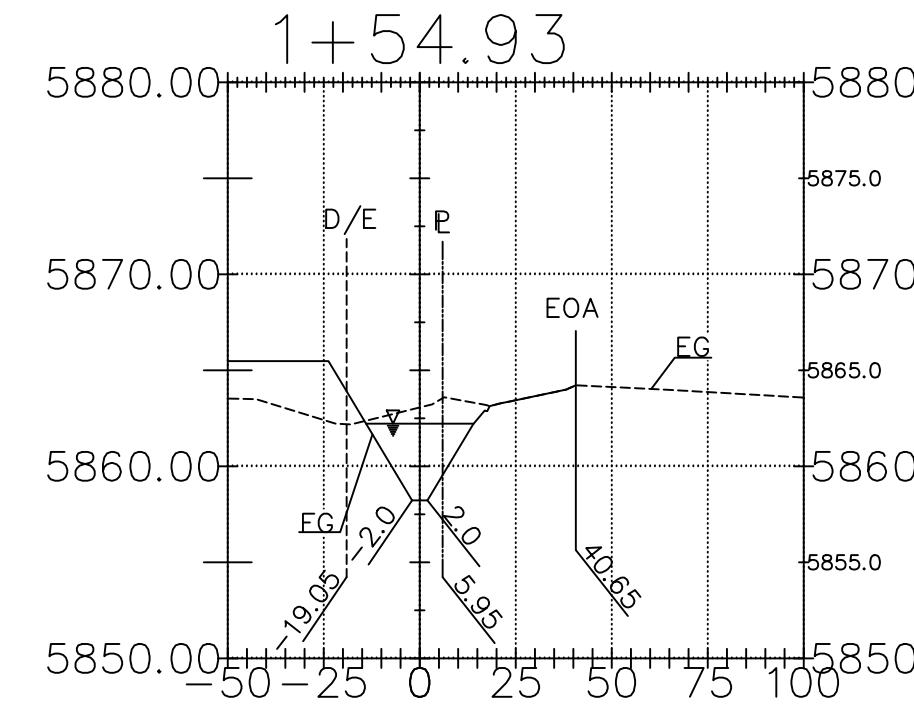
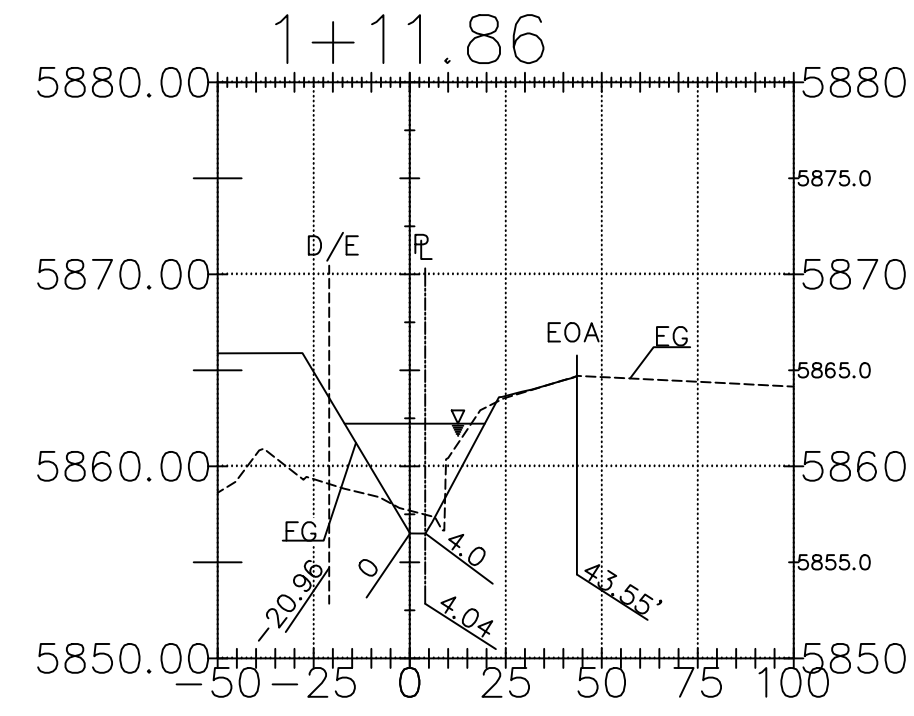
GRINNELL DITCH SOUTH PROFILE

REVISIONS:	NO.	DESCRIPTION	DATE

PROJECT NUMBER: 0102.2
SHEET 13A OF 19

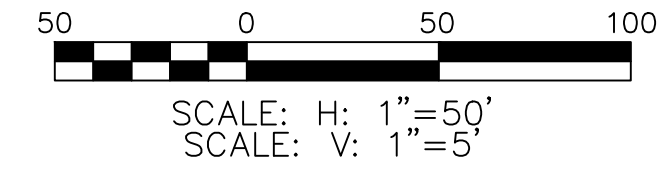
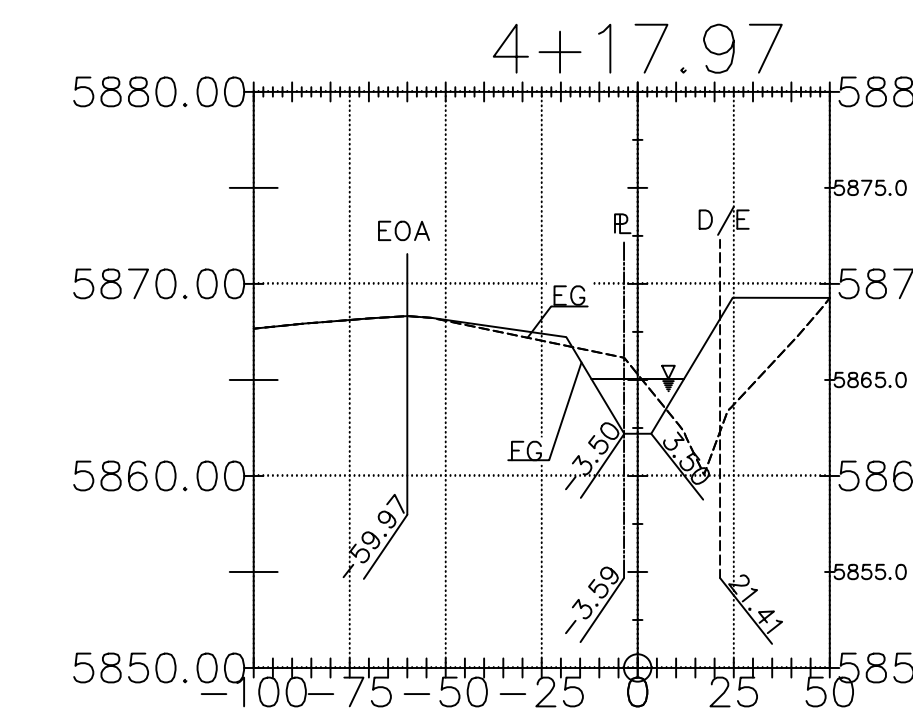
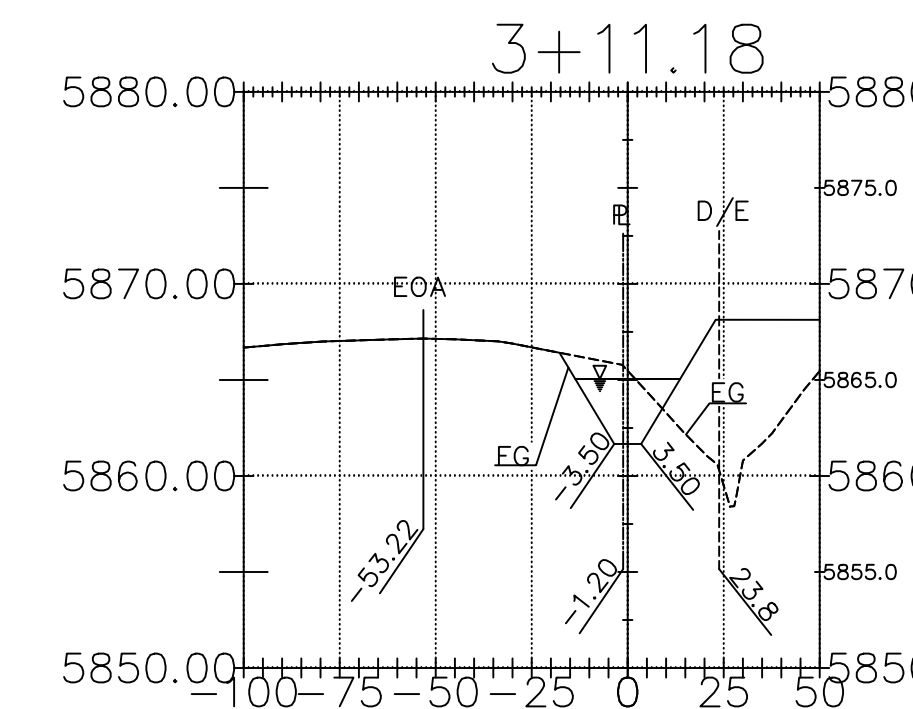
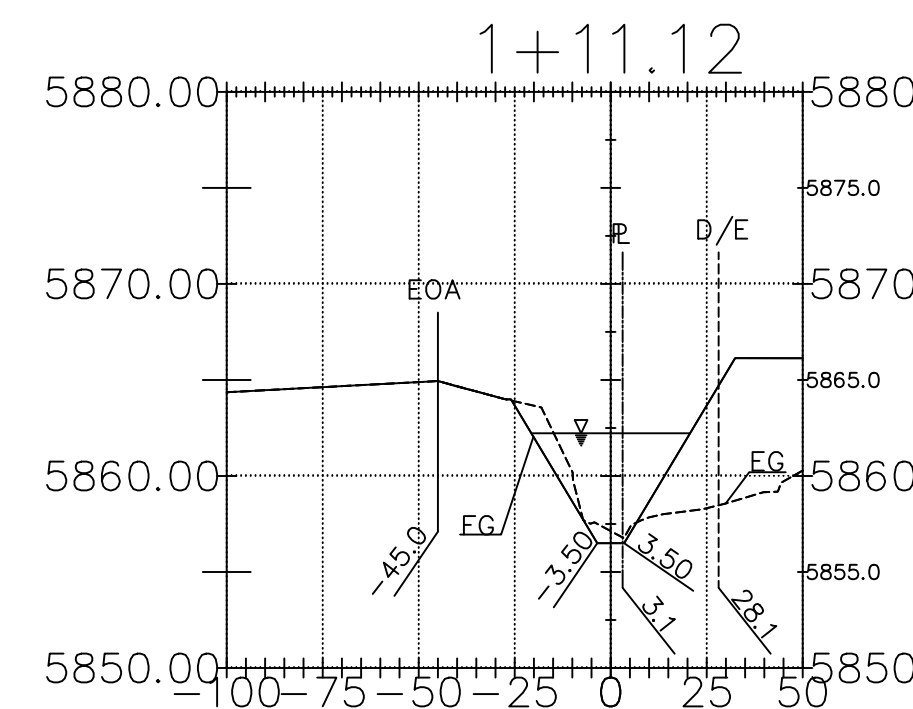
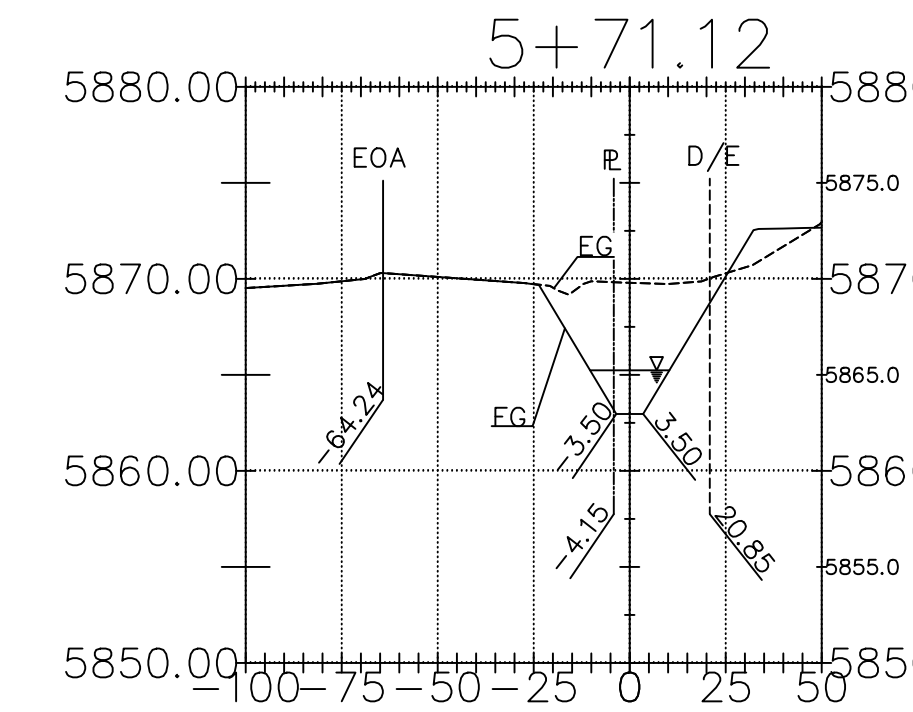
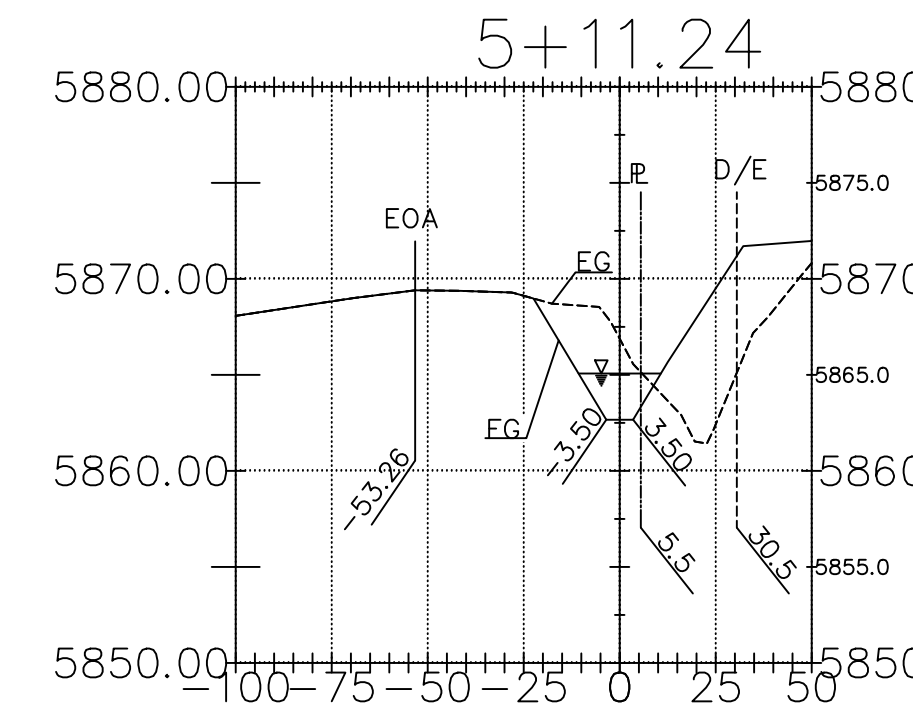
GRINNELL DITCH SOUTH

(PUBLIC)



GRINNELL DITCH NORTH

(PUBLIC)



SCALE: H: 1"=50'
SCALE: V: 1"=5'

Z:\2019\Colorado_Springs\2019\WaterView\Storm\1012 - Springs at WaterView\CAD\Drawings\Amended Storm\1012 - Grinnell Ditch Sections.dwg, 13 GRINNELL DITCH SECTIONS, 11/20/19 9:41:38 PM, ARCHIT:JLS, D:\001:136, 00 (date)

DSE Dakota Springs Engineering
31 N. TELON, SUITE 518
COLORADO SPRINGS, CO 80903
P: (719) 227-7392
F: (719) 227-7392

DESIGNED BY:	JUM	DATE:	10/28/19
DRAWN BY:	CEB	DATE:	10/28/19
CHECKED BY:	CC	DATE:	10/28/19

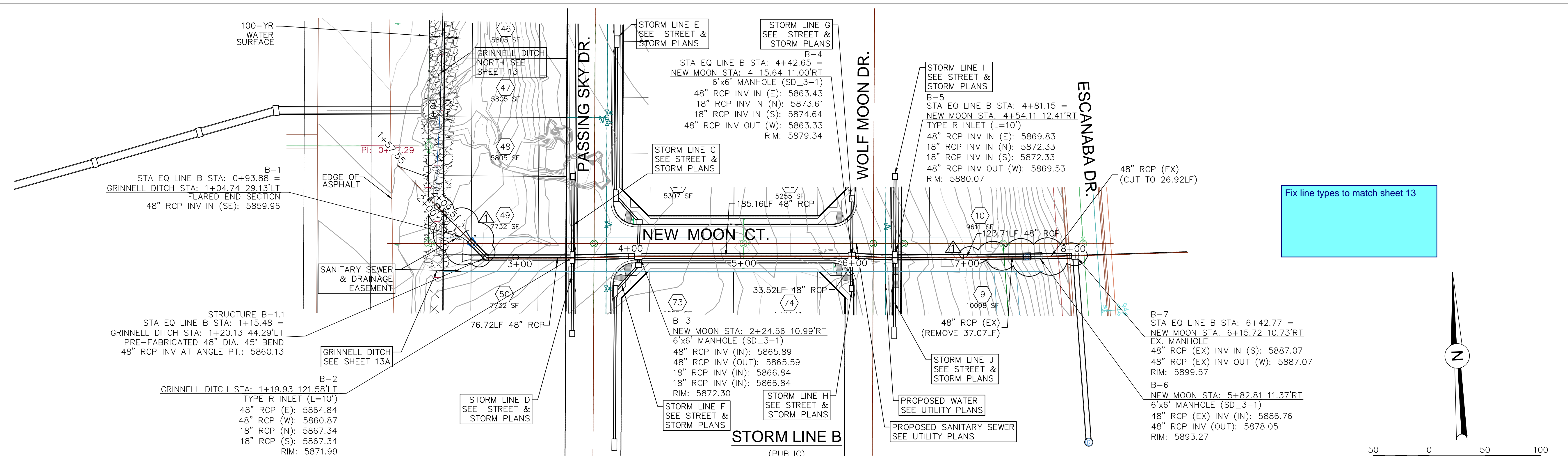
SCALE:	HORIZ: 1"=50'	VERT: 1"=5'	STATION:	START	END
			FROM:		
			TO:		

SPRINGS AT WATERVIEW - AMENDED STORM

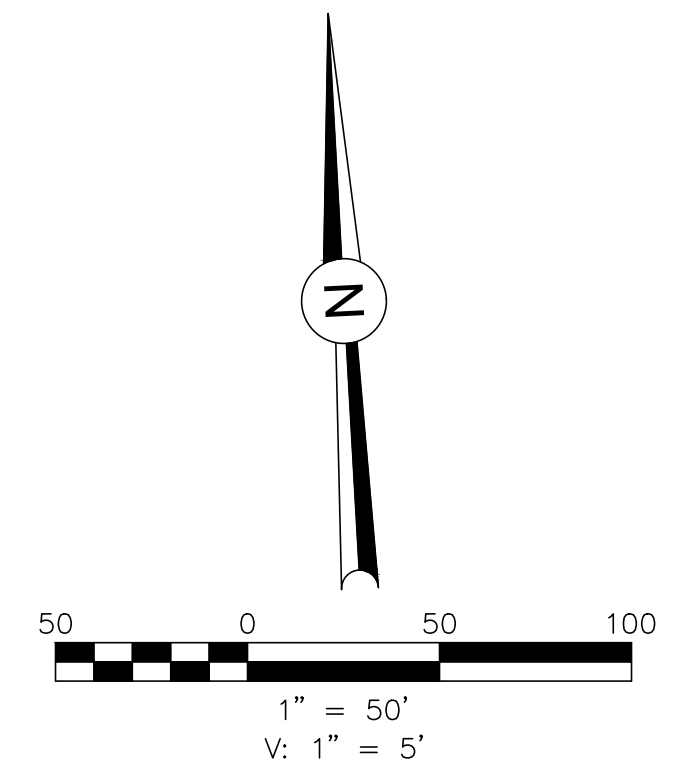
GRINNELL DITCH CROSS SECTIONS

NO.	DESCRIPTION	DATE

PROJECT NUMBER: 1012.2

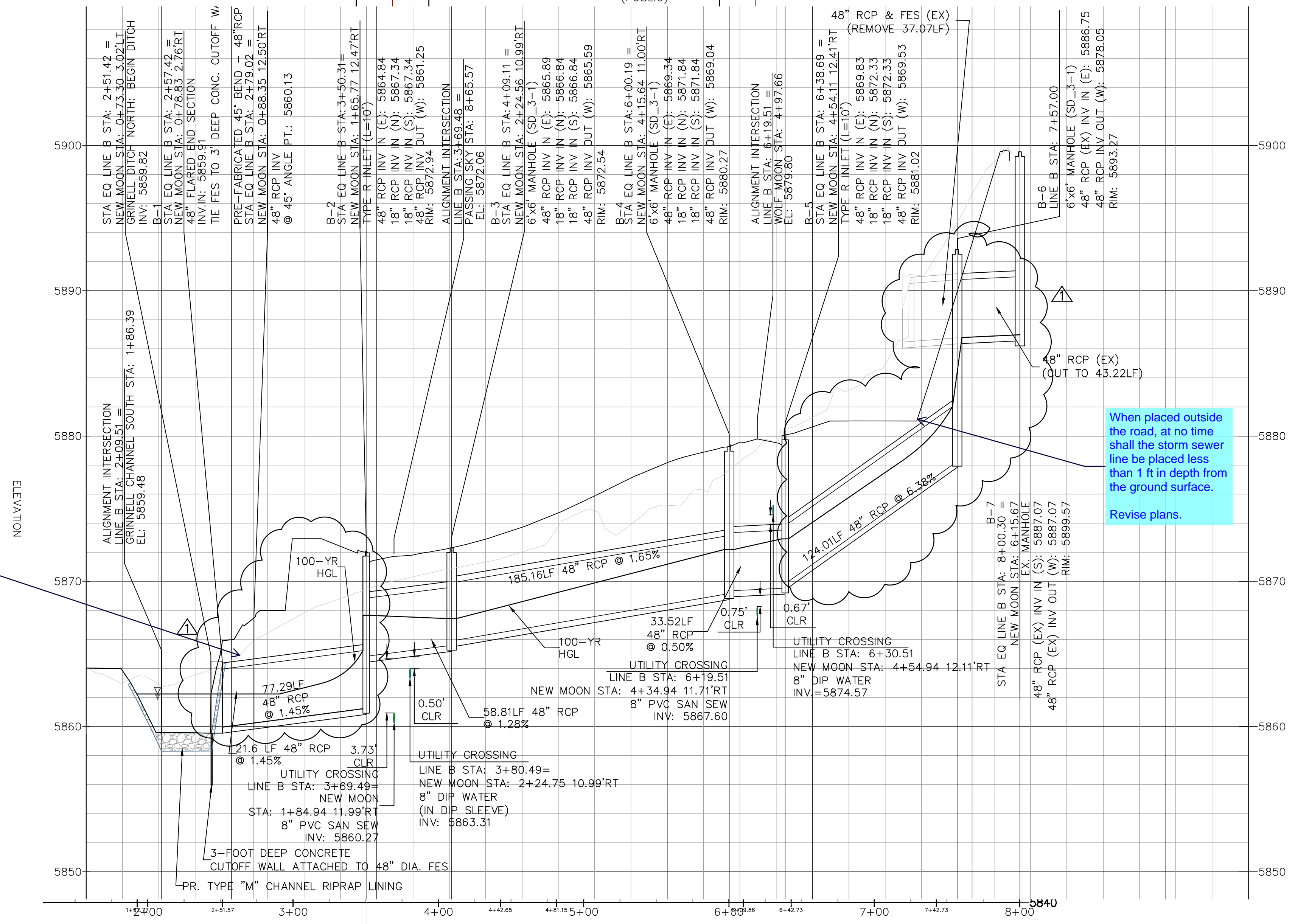


Fix line types to match sheet 13



Per ECM 3.3.1.D. Where it is necessary to design for pressure head water tight joints with a 100yr service life shall be used.

When placed outside the road, at no time shall the storm sewer line be placed less than 1 ft in depth from the ground surface. Revise plans.



SPRINGS AT WATERVIEW - AMENDED STORM

STORM B PROFILE

DESIGNED BY: JUM	DATE: 5/28/19
DRAWN BY: CEB	DATE: 10/28/19
CHECKED BY: CC	DATE: 10/28/19

SCALE:	HORIZ: 1"=50'	VERT: 1"=5'	STATION:
			FROM: START
			TO: END

REVISIONS:	DATE:
NO. DESCRIPTION	10/10/2019
1. REVISE UPPER REACH OF LINE B - TIE INTO SYSTEM	
2. REVISE LOWER REACH OF LINE B - TIE INTO SYSTEM	
3. INTERUPTION AND MANHOLE RETROFIT	
4. INCORPORATE 45° BEND TO THE WESTERN TERMINUS	
5. OF STORM DRAIN LINE B	

PROJECT NUMBER: 0102.2
SHEET 14 OF 19

DSE
Dakota Springs
Engineering

31 N. TEJON, SUITE 518
COLORADO SPRINGS, CO 80903
P: (719) 227-7388
F: (719) 227-7392

48 HOURS BEFORE YOU DIG,
CALL UTILITY LOCATORS
1-800-922-1987
CITY OF COLORADO SPRINGS UTILITIES
GAS, ELECTRIC, WATER AND WASTEWATER