

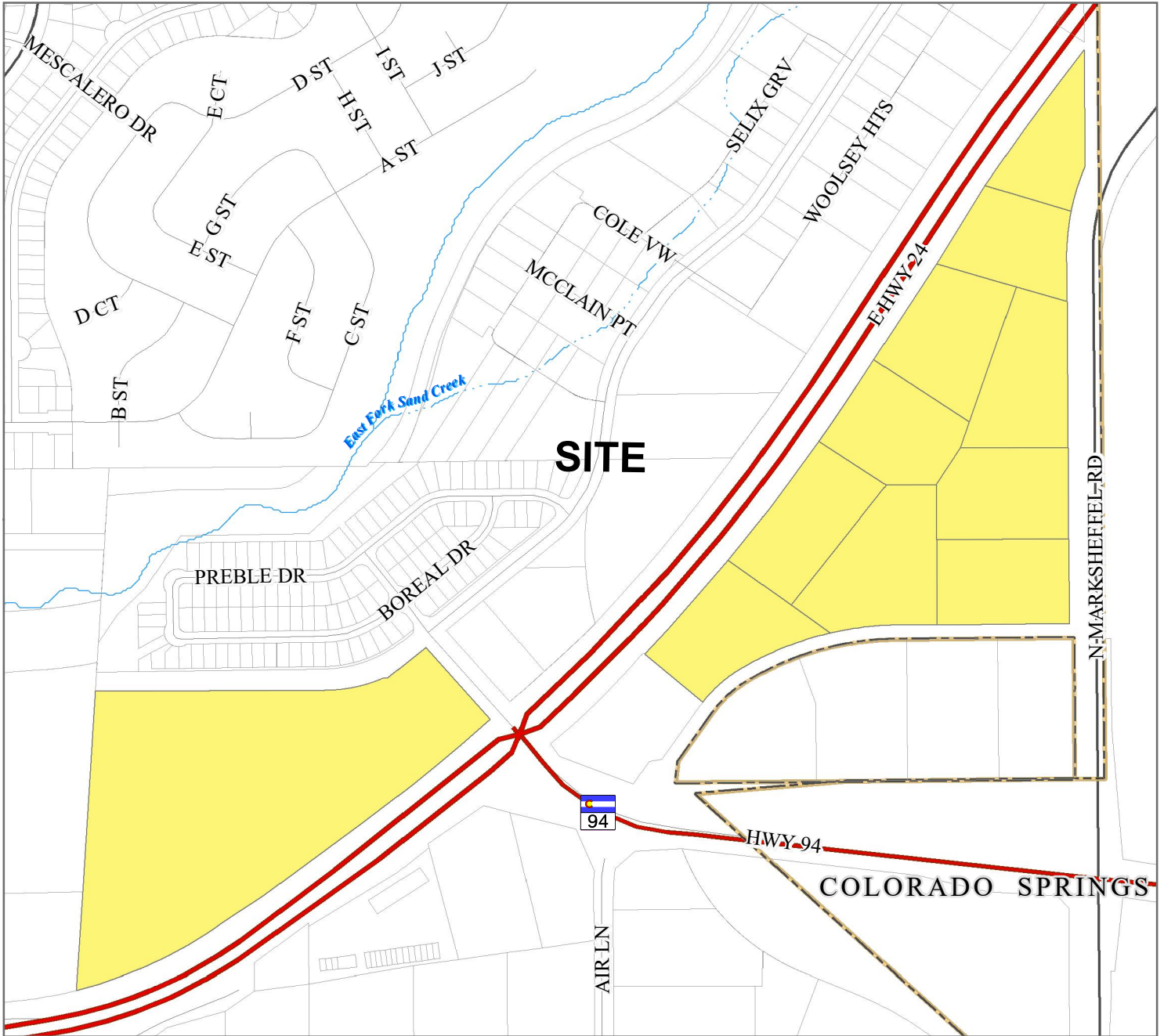
El Paso County Parcel Information

File Name: ID-20-001

Zone Map No. --

Date: September 9, 2020

PARCEL	NAME
5408001008	COLORADO SPRINGS EQUITIES LLC
5408001042	COLORADO SPRINGS EQUITIES LLC
5408001029	COLORADO SPRINGS EQUITIES LLC
5408007005	COLORADO SPRINGS EQUITIES LLC
5408001052	COLORADO SPRINGS EQUITIES LLC
5408001051	COLORADO SPRINGS EQUITIES LLC
5408001032	COLORADO SPRINGS EQUITIES LLC
5408001050	COLORADO SPRINGS EQUITIES LLC
5408001033	COLORADO SPRINGS EQUITIES LLC
5408001034	COLORADO SPRINGS EQUITIES LLC
5408001041	COLORADO SPRINGS EQUITIES LLC



Please report any parcel discrepancies to:
 El Paso County Assessor
 1675 W. Garden of the Gods Rd.
 Colorado Springs, CO 80907
 (719) 520-6600



COPYRIGHT 2018 by the Board of County Commissioners, El Paso County, Colorado. All rights reserved. No part of this document or data contained hereon may be reproduced; used to prepare derivative products; or distributed without the specific written approval of the Board of County Commissioners, El Paso County, Colorado. This document was prepared from the best data available at the time of printing. El Paso County, Colorado, makes no claim as to the completeness or accuracy of the data contained hereon.