

NEW WIDEFIELD PK-8 SCHOOL

CIVIL CONSTRUCTION PLANS

11060 FONTAINE BLVD
WIDEFIELD, COLORADO

EROSION CONTROL AND STORMWATER QUALITY PLAN

L K A P A R T N E R S
INCORPORATED
A Professional Corporation for Architecture and Planning
430 North Tejon Street Suite 200
Colorado Springs Colorado 80903
tele: 719.473.8448 fax: 719.473.8448
web: www.lkapartners.com

DREXEL, BARRELL & CO.
Engineers-Surveyors
3 SOUTH 7TH STREET
COLORADO SPRINGS, COLORADO 80905
CONTACT: TIM D. MCCONNELL, P.E.
(719)260-4887
BOULDER • COLORADO SPRINGS • GREELY

© Copyright 2017 The LKA Partners, Inc. This document and the information contained herein may not be reproduced or excerpted from without the express written permission of The LKA Partners, Inc. Unauthorized copying, disclosure or construction use are prohibited by copyright law.

New Widefield PK-8 School
11060 Fontaine Blvd., Widefield, CO

Widefield School District 3
1820 Main Street
Colorado Springs, CO 80911



Add std note: "1. Construction may not commence until a Construction Permit is obtained from Planning and Community Development (PCD) and a preconstruction conference is held with PCD Inspections."

STANDARD NOTES FOR EL PASO COUNTY GRADING AND EROSION CONTROL PLANS

- STORMWATER DISCHARGES FROM CONSTRUCTION SITES SHALL NOT CAUSE OR THREATEN TO CAUSE POLLUTION, CONTAMINATION, OR DEGRADATION OF STATE WATERS. ALL WORK AND EARTH DISTURBANCE SHALL BE DONE IN A MANNER THAT MINIMIZES POLLUTION OF ANY ON-SITE OR OFF SITE WATERS, INCLUDING WETLANDS.
- NOTWITHSTANDING ANYTHING DEPICTED IN THESE PLANS IN WORDS OR GRAPHIC REPRESENTATION, ALL DESIGN AND CONSTRUCTION RELATED TO ROADS, STORM DRAINAGE AND EROSION CONTROL SHALL CONFORM TO THE STANDARDS AND REQUIREMENTS OF THE MOST RECENT VERSION OF THE RELEVANT ADOPTED EL PASO COUNTY STANDARDS, INCLUDING THE LAND DEVELOPMENT CODE, THE ENGINEERING CRITERIA MANUAL, THE DRAINAGE CRITERIA MANUAL, AND THE DRAINAGE CRITERIA MANUAL VOLUME 2. ANY DEVIATIONS TO REGULATIONS AND STANDARDS MUST BE REQUESTED, AND APPROVED, IN WRITING.
- A SEPARATE STORMWATER MANAGEMENT PLAN (SWMP) FOR THIS PROJECT SHALL BE COMPLETED AND AN EROSION AND STORMWATER QUALITY CONTROL PERMIT (ESQCP) ISSUED PRIOR TO COMMENCING CONSTRUCTION. DURING CONSTRUCTION THE SWMP IS THE RESPONSIBILITY OF THE DESIGNATED STORMWATER MANAGER, SHALL BE LOCATED ON SITE AT ALL TIMES AND SHALL BE KEPT UP TO DATE WITH WORK PROGRESS AND CHANGES IN THE FIELD.
- ONCE THE ESQCP HAS BEEN ISSUED, THE CONTRACTOR MAY INSTALL THE INITIAL STAGE EROSION AND SEDIMENT CONTROL BMPs AS INDICATED ON THE GEC. A PRECONSTRUCTION MEETING BETWEEN THE CONTRACTOR, ENGINEER, AND EL PASO COUNTY WILL BE HELD PRIOR TO ANY CONSTRUCTION. IT IS THE RESPONSIBILITY OF THE APPLICANT TO COORDINATE THE MEETING TIME AND PLACE WITH COUNTY INSPECTIONS STAFF.
- SOIL EROSION CONTROL MEASURES FOR ALL SLOPES, CHANNELS, DITCHES, OR ANY DISTURBED LAND AREA SHALL BE COMPLETED WITHIN 21 CALENDAR DAYS AFTER FINAL GRADING, OR FINAL EARTH DISTURBANCE, HAS BEEN COMPLETED. DISTURBED AREAS AND STOCKPILES WHICH ARE NOT AT FINAL GRADE BUT WILL REMAIN DORMANT FOR LONGER THAN 30 DAYS SHALL ALSO BE MULCHED WITHIN 21 DAYS AFTER INTERIM GRADING. AN AREA THAT IS GOING TO REMAIN IN AN INTERIM STATE FOR MORE THAN 60 DAYS SHALL ALSO BE SEEDED. ALL TEMPORARY SOIL EROSION CONTROL MEASURES AND BMPs SHALL BE MAINTAINED UNTIL PERMANENT SOIL EROSION CONTROL MEASURES ARE IMPLEMENTED AND ESTABLISHED.
- TEMPORARY SOIL EROSION CONTROL FACILITIES SHALL BE REMOVED AND EARTH DISTURBANCE AREAS GRADED AND STABILIZED WITH PERMANENT SOIL EROSION CONTROL MEASURES PURSUANT TO STANDARDS AND SPECIFICATION PRESCRIBED IN THE DCM VOLUME II AND THE ENGINEERING CRITERIA MANUAL (ECM) APPENDIX I.
- ALL PERSONS ENGAGED IN EARTH DISTURBANCE SHALL IMPLEMENT AND MAINTAIN ACCEPTABLE SOIL EROSION AND SEDIMENT CONTROL MEASURES INCLUDING BMPs WITH CONFORMANCE WITH THE EROSION CONTROL TECHNICAL STANDARDS OF THE DRAINAGE CRITERIA MANUAL (DCM) VOLUME II AND IN ACCORDANCE WITH THE STORMWATER MANAGEMENT PLAN (SWMP).
- ALL TEMPORARY EROSION CONTROL FACILITIES INCLUDING BMPs AND ALL PERMANENT FACILITIES INTENDED TO CONTROL EROSION OF ANY EARTH DISTURBANCE OPERATIONS, SHALL BE INSTALLED AS DEFINED IN THE APPROVED PLANS, THE SWMP AND THE DCM VOLUME II AND MAINTAINED THROUGHOUT THE DURATION OF THE EARTH DISTURBANCE OPERATION.
- ANY EARTH DISTURBANCE SHALL BE CONDUCTED IN SUCH A MANNER SO AS TO EFFECTIVELY REDUCE ACCELERATED SOIL EROSION AND RESULTING SEDIMENTATION. ALL DISTURBANCES SHALL BE DESIGNED, CONSTRUCTED, AND COMPLETED SO THAT THE EXPOSED AREA OF ANY DISTURBED LAND SHALL BE LIMITED TO THE SHORTEST PRACTICAL PERIOD OF TIME.
- ANY TEMPORARY OR PERMANENT FACILITY DESIGNED AND CONSTRUCTED FOR THE CONVEYANCE OF STORMWATER AROUND, THROUGH, OR FROM THE EARTH DISTURBANCE AREA SHALL BE DESIGNED TO LIMIT THE DISCHARGE TO A NON-EROSIVE VELOCITY.
- CONCRETE WASH WATER SHALL BE CONTAINED AND DISPOSED OF IN ACCORDANCE WITH THE SWMP. NO WASH WATER SHALL BE DISCHARGED TO OR ALLOWED TO RUNOFF TO STATE WATERS, INCLUDING ANY SURFACE OR SUBSURFACE STORM DRAINAGE SYSTEM OR FACILITIES.
- EROSION CONTROL BLANKETING IS TO BE USED ON SLOPES STEEPER THAN 3:1.
- BUILDING, CONSTRUCTION, EXCAVATION, OR OTHER WASTE MATERIALS SHALL NOT BE TEMPORARILY PLACED OR STORED IN THE STREET, ALLEY, OR OTHER PUBLIC WAY, UNLESS IN ACCORDANCE WITH AN APPROVED TRAFFIC CONTROL PLAN. BMPs MAY BE REQUIRED BY EL PASO COUNTY ENGINEERING IF DEEMED NECESSARY, BASED ON SPECIFIC CONDITIONS AND CIRCUMSTANCES.
- VEHICLE TRACKING OF SOILS AND CONSTRUCTION DEBRIS OFF-SITE SHALL BE MINIMIZED. MATERIALS TRACKED OFFSITE SHALL BE CLEANED UP AND PROPERLY DISPOSED OF IMMEDIATELY.
- CONTRACTOR SHALL BE RESPONSIBLE FOR THE REMOVAL OF ALL WASTES FROM THE CONSTRUCTION SITE FOR DISPOSAL IN ACCORDANCE WITH LOCAL AND STATE REGULATORY REQUIREMENTS. NO CONSTRUCTION DEBRIS, TREE SLASH, BUILDING MATERIAL WASTES OR UNUSED BUILDING MATERIALS SHALL BE BURIED, DUMPED, OR DISCHARGED AT THE SITE.
- THE OWNER, SITE DEVELOPER, CONTRACTOR, AND/OR THEIR AUTHORIZED AGENTS SHALL BE RESPONSIBLE FOR THE REMOVAL OF ALL CONSTRUCTION DEBRIS, DIRT, TRASH, ROCK, SEDIMENT, AND SAND THAT MAY ACCUMULATE IN THE STORM SEWER OR OTHER DRAINAGE CONVEYANCE SYSTEM AND STORMWATER APPURTENANCES AS A RESULT OF SITE DEVELOPMENT.
- THE QUANTITY OF MATERIALS STORED ON THE PROJECT SITE SHALL BE LIMITED, AS MUCH AS PRACTICAL, TO THAT QUANTITY REQUIRED TO PERFORM THE WORK IN AN ORDERLY SEQUENCE. ALL MATERIALS STORED ON-SITE SHALL BE STORED IN A NEAT, ORDERLY MANNER, IN THEIR ORIGINAL CONTAINERS, WITH ORIGINAL MANUFACTURER'S LABELS.
- NO CHEMICALS ARE TO BE USED BY THE CONTRACTOR, WHICH HAVE THE POTENTIAL TO BE RELEASED IN STORMWATER UNLESS PERMISSION FOR THE USE OF A SPECIFIC CHEMICAL IS GRANTED IN WRITING BY THE ECM ADMINISTRATOR. IN GRANTING THE USE OF SUCH CHEMICALS, SPECIAL CONDITIONS AND MONITORING MAY BE REQUIRED.
- BULK STORAGE STRUCTURES FOR PETROLEUM PRODUCTS AND OTHER CHEMICALS SHALL HAVE ADEQUATE PROTECTION SO AS TO CONTAIN ALL SPILLS AND PREVENT ANY SPILLED MATERIAL FROM ENTERING STATE WATERS, INCLUDING ANY SURFACE OR SUBSURFACE STORM DRAINAGE SYSTEM OR FACILITIES.
- NO PERSON SHALL CAUSE THE IMPEDIMENT OF STORMWATER FLOW IN THE FLOW LINE OF THE CURB AND GUTTER OR IN THE DITCHLINE.
- INDIVIDUALS SHALL COMPLY WITH THE "COLORADO WATER QUALITY CONTROL ACT" (TITLE 25, ARTICLE 8, CRS), AND THE "CLEAN WATER ACT" (33 USC 1344), IN ADDITION TO THE REQUIREMENTS INCLUDED IN THE DCM VOLUME II AND THE ECM APPENDIX I. ALL APPROPRIATE PERMITS MUST BE OBTAINED BY THE CONTRACTOR PRIOR TO CONSTRUCTION (MPDES, FLOODPLAIN, 404, FLUGTIVE DUST, ETC.). IN THE EVENT OF CONFLICTS BETWEEN THESE REQUIREMENTS AND LAWS, RULES, OR REGULATIONS OF OTHER FEDERAL, STATE, OR COUNTY AGENCIES, THE MORE RESTRICTIVE LAWS, RULES, OR REGULATIONS SHALL APPLY.
- ALL CONSTRUCTION TRAFFIC MUST ENTER/EXIT THE SITE AT APPROVED CONSTRUCTION ACCESS POINTS.
- PRIOR TO ACTUAL CONSTRUCTION THE PERMITEE SHALL VERIFY THE LOCATION OF EXISTING UTILITIES.
- A WATER SOURCE SHALL BE AVAILABLE ON SITE DURING EARTHWORK OPERATIONS AND UTILIZED AS REQUIRED TO MINIMIZE DUST FROM EARTHWORK EQUIPMENT AND WIND.
- THIS PROPERTY IS SUBJECT TO THE FINDINGS, SUMMARY, AND CONCLUSIONS OF THE PRELIMINARY GEOTECHNICAL INVESTIGATION BY TERRACON CONSULTANTS, DATED FEBRUARY 20, 2018.
- AT LEAST TEN DAYS PRIOR TO THE ANTICIPATED START OF CONSTRUCTION, FOR PROJECTS THAT WILL DISTURB 1 ACRE OR MORE, THE OWNER OR OPERATOR OF CONSTRUCTION ACTIVITY SHALL SUBMIT A PERMIT APPLICATION FOR STORMWATER DISCHARGE TO THE COLORADO DEPARTMENT OF PUBLIC HEALTH AND ENVIRONMENT, WATER QUALITY DIVISION. THE APPLICATION CONTAINS CERTIFICATION OF COMPLETION OF A STORMWATER MANAGEMENT PLAN (SWMP), OF WHICH THIS GRADING AND EROSION CONTROL PLAN MAY BE A PART. FOR INFORMATION OR APPLICATION MATERIALS CONTACT:
COLORADO DEPARTMENT OF PUBLIC HEALTH AND ENVIRONMENT
WATER QUALITY CONTROL DIVISION
WQCD - PERMITS
4300 CHERRY CREEK DRIVE SOUTH
DENVER, CO 80246-1530
ATTN:PERMITS UNIT



VICINITY MAP
NOT TO SCALE

LEGAL DESCRIPTION:
TRACT J PIONEER LANDING AT LORSON RANCH FILING NO 2

FLOODPLAIN STATEMENT:
THE PROPERTY IS INDICATED AS BEING LOCATED IN ZONE "X" ON THE NFIP FLOOD INSURANCE RATE MAP FOR EL PASO COUNTY, COLORADO, PANEL NUMBER 08041 C 1000 F, DATED MARCH 17, 1997. ZONE "X" IS DESCRIBED AS AREAS LOCATED OUTSIDE OF THE 500 YEAR FLOOD HAZARD AREA.

SITE BENCHMARK:
FIMS MONUMENT NUMBER F204 LOCATED AT THE NORTHWEST CORNER OF FONTAINE BLVD AND COTTONWOOD GROVE DR.
ELEV=5724.072 (NGVD 29)

STATEMENTS:
THE CITY OF COLORADO SPRINGS RECOGNIZES THE DESIGN ENGINEER AS HAVING RESPONSIBILITY FOR THE DESIGN; THE CITY HAS IMITED ITS SCOPE OF REVIEW ACCORDINGLY.
RESUBMITTAL IS REQUIRED IF CONSTRUCTION HAS NOT COMMENCED WITHIN 180 DAYS OF REVIEW DATE.

TIMING
ANTICIPATED STARTING AND COMPLETION TIME PERIOD OF SITE GRADING:
SUMMER 2018 - SUMMER 2019

EXPECTED DATE ON WHICH THE FINAL STABILIZATION WILL BE COMPLETED:
SUMMER 2018 **2019**

AREAS
TOTAL AREA OF THE SITE TO BE CLEARED, EXCAVATED OR GRADED:
APPROXIMATELY 25.1 ACRES

RECEIVING WATERS
NAME OF RECEIVING WATERS:
JIMMY CAMP CREEK

SOIL TYPE
MANZANST CLAY LOAM, HYDROLOGIC GROUP 'C' SOIL AND RAZOR-MIDWAY COMPLEX, HYDROLOGIC GROUP 'D' SOIL

FLOODPLAIN
FIRM PANEL 08041C1000 F MARCH 17, 1997

SHEET INDEX

- EC-1 COVER SHEET
- EC-2 GRADING AND EROSION CONTROL PLAN
- EC-3 BMP DETAILS
- EC-4 BMP DETAILS

NOTE

IN ACCORDANCE WITH ECM SECTION 1.12, THESE CONSTRUCTION DOCUMENTS WILL BE VALID FOR CONSTRUCTION FOR A PERIOD OF 2 YEARS FROM THE DATE SIGNED BY THE EL PASO COUNTY ENGINEER. IF CONSTRUCTION HAS NOT STARTED WITHIN THOSE 2 YEARS, THE PLANS WILL NEED TO BE RESUBMITTED FOR APPROVAL, INCLUDING PAYMENT OF REVIEW FEES AT THE PLANNING AND COMMUNITY DEVELOPMENT DIRECTOR'S DISCRETION.

DESIGN ENGINEER'S STATEMENT

THESE DETAILED PLANS AND SPECIFICATIONS WERE PREPARED UNDER MY DIRECTION AND SUPERVISION. SAID PLANS AND SPECIFICATIONS HAVE BEEN PREPARED ACCORDING TO CRITERIA ESTABLISHED BY THE COUNTY FOR THE DETAILED ROADWAY, DRAINAGE, GRADING AND EROSION CONTROL PLANS AND SPECIFICATIONS, AND SAID PLANS AND SPECIFICATIONS ARE IN CONFORMITY WITH APPLICABLE MASTER DRAINAGE PLANS AND MASTER TRANSPORTATION PLANS. SAID PLANS AND SPECIFICATIONS MEET THE PURPOSES FOR WHICH THE PARTICULAR ROADWAY AND DRAINAGE FACILITIES ARE DESIGNED AND ARE CORRECT TO THE BEST OF MY KNOWLEDGE AND BELIEF. I ACCEPT RESPONSIBILITY FOR ANY LIABILITY CAUSED BY ANY NEGLIGENT ACTS, ERRORS OR OMISSIONS ON MY PART IN PREPARATION OF THESE DETAILED PLANS AND SPECIFICATIONS.

TIM D. MCCONNELL DATE
P.E.# 33797

OWNER'S STATEMENT

THE OWNER WILL COMPLY WITH THE REQUIREMENTS OF THE GRADING AND EROSION CONTROL PLAN.

STEVE MEIER DATE

EL PASO COUNTY

COUNTY PLAN REVIEW IS PROVIDED ONLY FOR GENERAL CONFORMANCE WITH COUNTY DESIGN CRITERIA. THE COUNTY IS NOT RESPONSIBLE FOR THE ACCURACY AND ADEQUACY OF THE DESIGN, DIMENSIONS, AND/OR ELEVATIONS WHICH SHALL BE CONFIRMED AT THE JOB SITE. THE COUNTY THROUGH THE APPROVAL OF THIS DOCUMENT ASSUMES NO RESPONSIBILITY FOR THE COMPLETENESS AND/OR ACCURACY OF THIS DOCUMENT.

FILED IN ACCORDANCE WITH THE REQUIREMENTS OF THE EL PASO COUNTY LAND DEVELOPMENT CODE, DRAINAGE CRITERIA MANUAL, AND ENGINEERING CRITERIA MANUAL AS AMENDED.

JENNIFER IRVINE, P.E. DATE
COUNTY ENGINEER

95% Construction Documents
Not for Construction

Drawn: SBN
Checked: TDM
Issued: 5/8/18
Revised:

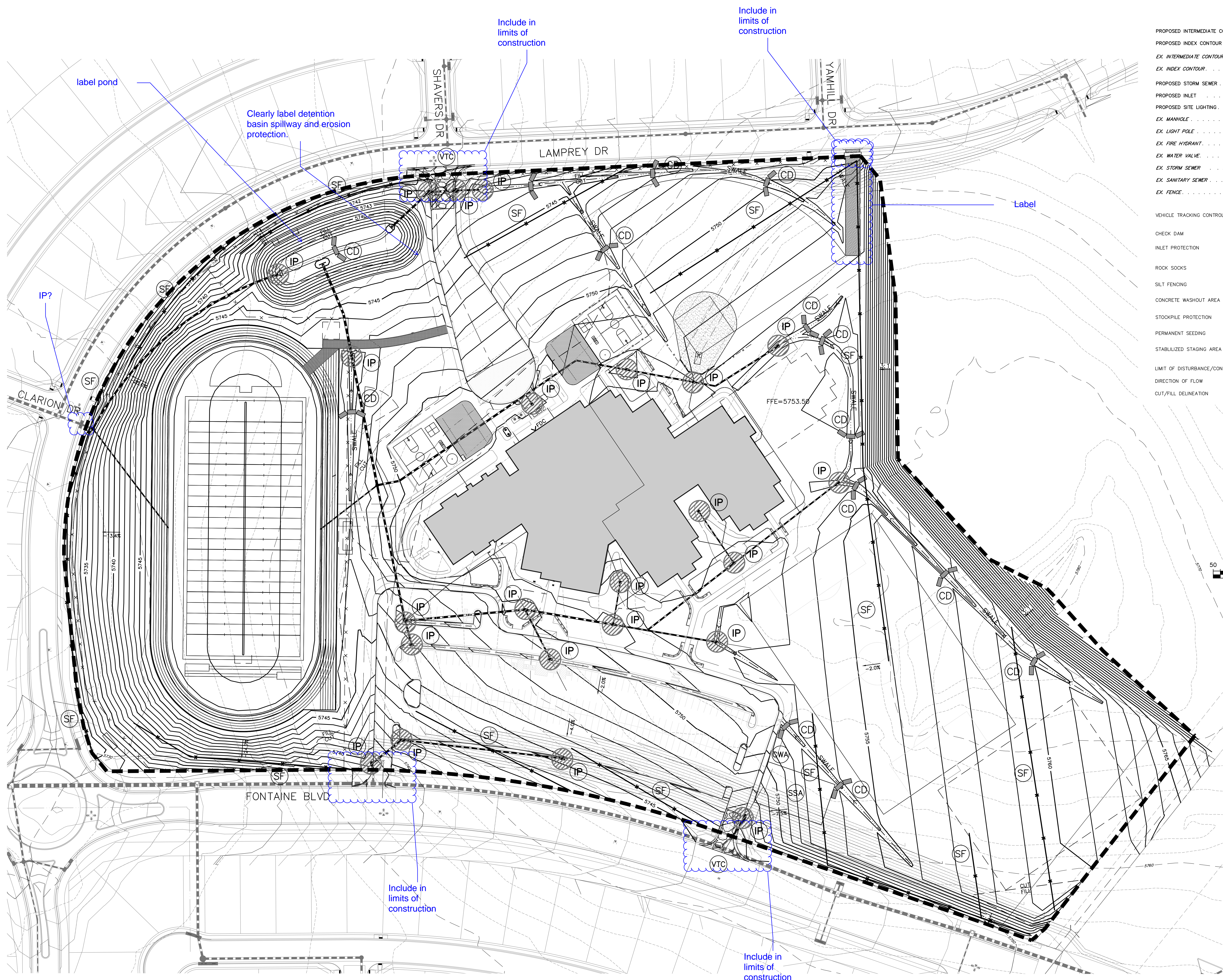
21126-00-7.0GREC CV

EROSION CONTROL
COVER

C7.0

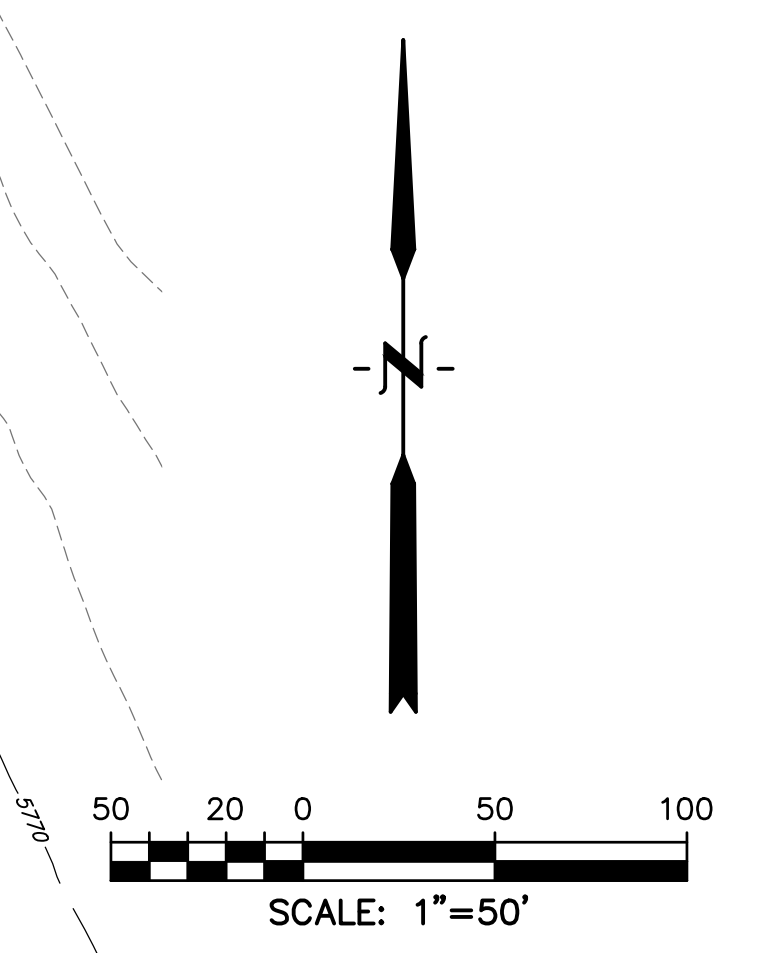
Project No. 17.001
The LKA Partners Incorporated

SHEET 1 OF 1



LEGEND

PROPOSED INTERMEDIATE CONTOUR
PROPOSED INDEX CONTOUR 6240
EX. INTERMEDIATE CONTOUR
EX. INDEX CONTOUR 6205
PROPOSED STORM SEWER
PROPOSED INLET
PROPOSED SITE LIGHTING
EX. MANHOLE
EX. LIGHT POLE
EX. FIRE HYDRANT
EX. WATER VALVE
EX. STORM SEWER ST
EX. SANITARY SEWER SS
EX. FENCE
VEHICLE TRACKING CONTROL	VTC
CHECK DAM	CD
INLET PROTECTION	IP
ROCK SOCKS	RS
SILT FENCING	SF
CONCRETE WASHOUT AREA	CWA
STOCKPILE PROTECTION	SP
PERMANENT SEEDING	PS
STABILIZED STAGING AREA	SSA
LIMIT OF DISTURBANCE/CONSTRUCTION BOUNDARY
DIRECTION OF FLOW
CUT/FILL DELINEATION



LKA PARTNERS
INCORPORATED
A Professional Corporation for Architecture and Planning
430 North Tejon Street Suite 200
Colorado Springs, Colorado 80903
tele: 719.473.8448 fax: 719.473.8448
web: www.lkpartners.com

DREXEL, BARRELL & CO.
Engineers-Surveyors
3 SOUTH 7TH STREET
COLORADO SPGS, COLORADO 80905
CONTACT: TIM D. MCCONNELL, P.E.
(719)260-4887
BOULDER • COLORADO SPRINGS • GREELY

© Copyright 2017 The LKA Partners, Inc. This document and the information contained herein may not be reproduced or excerpted from without the express written permission of The LKA Partners, Inc. Unauthorized copying, disclosure or construction use are prohibited by copyright law.

New Widefield PK-8 School
11060 Fontaine Blvd., Widefield, CO

Widefield School District 3
1820 Main Street
Colorado Springs, CO 80911



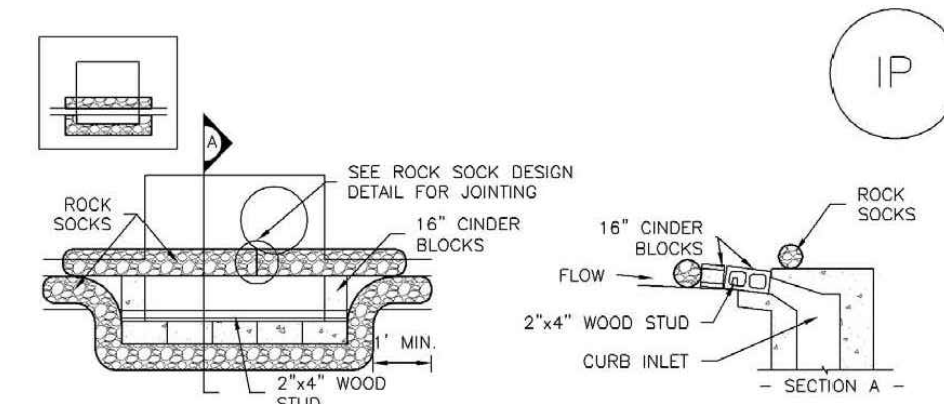
95% Construction Documents
Not for Construction

Drawn: SBN
Checked: TDM
Issued: 5/8/18
Revised:

21126-00-7.1GREC

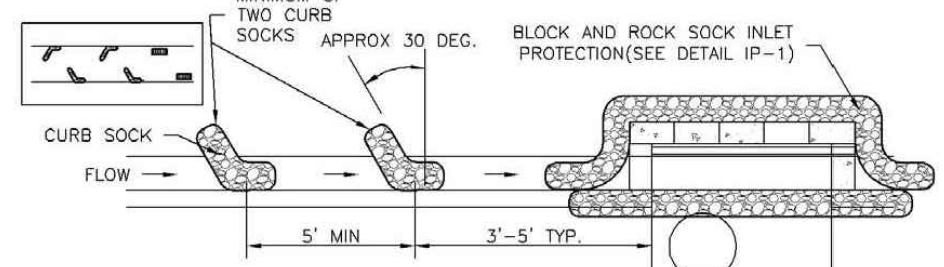
**GRADING &
EROSION CONTROL
PLAN**

C7.1



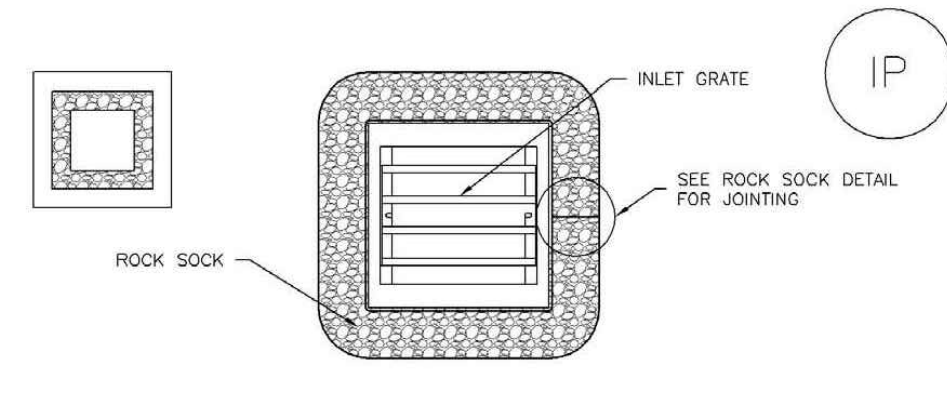
IP-1. BLOCK AND ROCK SOCK SUMP OR ON-GRADE INLET PROTECTION

- BLOCK AND CURB SOCK INLET PROTECTION INSTALLATION NOTES**
- SEE ROCK SOCK DESIGN DETAIL FOR INSTALLATION REQUIREMENTS.
 - CONCRETE "TONGUE" BLOCKS SHALL BE LAID ON THEIR SIDES AROUND THE INLET IN A SINGLE ROW, ABUTTING ONE ANOTHER WITH THE OPEN END FACING AWAY FROM THE CURB.
 - GRAVEL BASS SHALL BE PLACED AROUND CONCRETE BLOCKS, CLOSELY ABUTTING ONE ANOTHER AND JOINED TOGETHER IN ACCORDANCE WITH ROCK SOCK DESIGN DETAIL.



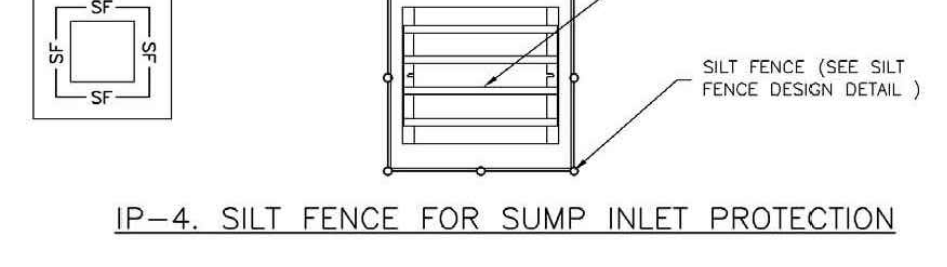
IP-2. CURB ROCK SOCKS UPSTREAM OF INLET PROTECTION

- CURB ROCK SOCK INLET PROTECTION INSTALLATION NOTES**
- SEE ROCK SOCK DESIGN DETAIL INSTALLATION REQUIREMENTS.
 - PLACEMENT OF THE SOCK SHALL BE APPROXIMATELY 30 DEGREES FROM PERPENDICULAR IN THE OPPOSITE DIRECTION OF FLOW.
 - SOCKS ARE TO BE FLUSH WITH THE CURB AND SPACED A MINIMUM OF 5 FEET APART.
 - AT LEAST TWO CURB SOCKS IN SERIES ARE REQUIRED UPSTREAM OF ON-GRADE INLETS.



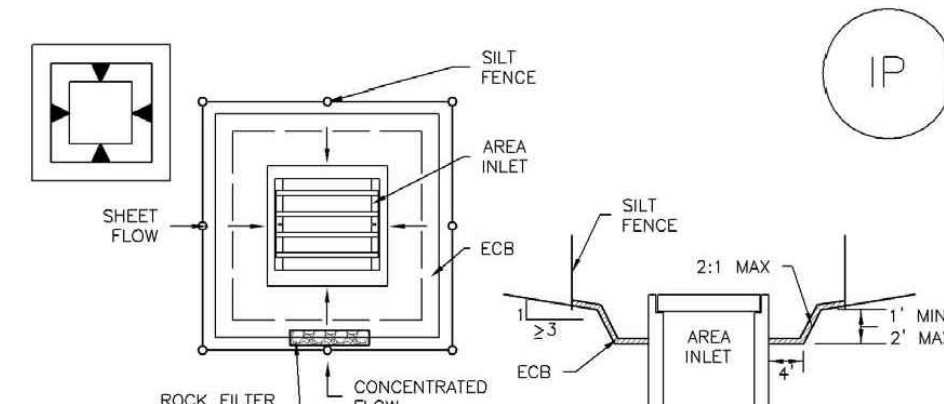
IP-3. ROCK SOCK SUMP/AREA INLET PROTECTION

- ROCK SOCK SUMP/AREA INLET PROTECTION INSTALLATION NOTES**
- THIS FORM OF INLET PROTECTION IS PRIMARILY APPLICABLE FOR SITES THAT HAVE NOT YET REACHED FINAL GRADE AND SHOULD BE USED ONLY FOR INLETS WITH A RELATIVELY SMALL CONTRIBUTING DRAINAGE AREA.
 - STRAW MATS/SEDIMENT CONTROL LOGS MAY BE USED IN PLACE OF ROCK SOCKS FOR INLETS IN PERVIOUS AREAS. INSTALL PER SEDIMENT CONTROL LOG DETAIL.



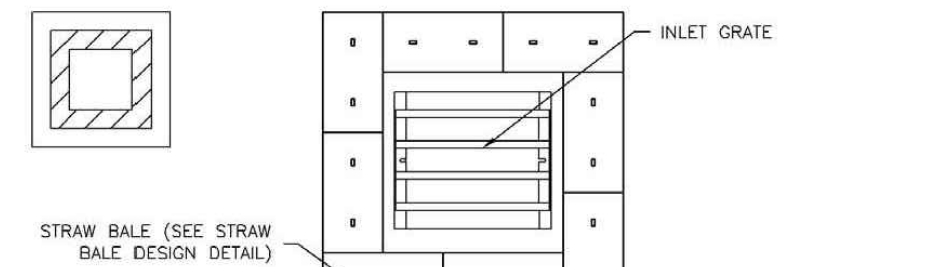
IP-4. SILT FENCE FOR SUMP INLET PROTECTION

- SILT FENCE INLET PROTECTION INSTALLATION NOTES**
- SEE SILT FENCE DESIGN DETAIL FOR INSTALLATION REQUIREMENTS.
 - POINTS SHALL BE PLACED AT EACH CORNER OF THE INLET AND AROUND THE EDGES AT A MAXIMUM SPACING OF 3 FEET.
 - STRAW MATS/SEDIMENT CONTROL LOGS MAY BE USED IN PLACE OF SILT FENCE FOR INLETS IN PERVIOUS AREAS. INSTALL PER SEDIMENT CONTROL LOG DETAIL.



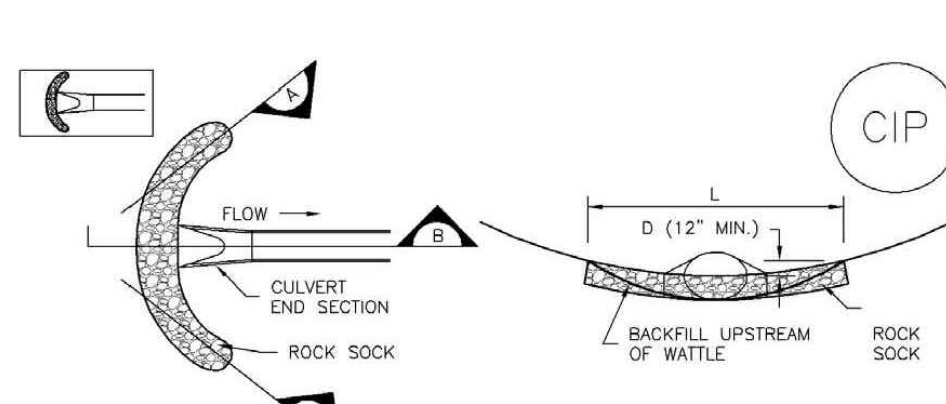
IP-5. OVEREXCAVATION INLET PROTECTION

- OVEREXCAVATION INLET PROTECTION INSTALLATION NOTES**
- THIS FORM OF INLET PROTECTION IS PRIMARILY APPLICABLE FOR SITES THAT HAVE NOT YET REACHED FINAL GRADE AND SHOULD BE USED ONLY FOR INLETS WITH A RELATIVELY SMALL CONTRIBUTING DRAINAGE AREA.
 - WHEN USED FOR CONCENTRATED FLOWS, SHAPE BASIN IN 2:1 RATIO WITH LENGTH ORIENTED TOWARDS DIRECTION OF FLOW.
 - SEDIMENT MUST BE PERIODICALLY REMOVED FROM THE OVEREXCAVATED AREA.



IP-6. STRAW BALE FOR SUMP INLET PROTECTION

- STRAW BALE BARRIER INLET PROTECTION INSTALLATION NOTES**
- SEE STRAW BALE DESIGN DETAIL FOR INSTALLATION REQUIREMENTS.
 - BALES SHALL BE PLACED IN A SINGLE ROW AROUND THE INLET WITH ENDS OF BALES TOGETHER ABUTTING ONE ANOTHER.



CIP-1. CULVERT INLET PROTECTION

- CULVERT INLET PROTECTION INSTALLATION NOTES**
- SEE PLAN VIEW FOR -LOCATION OF INLET PROTECTION.
 - SEE ROCK SOCK DESIGN DETAIL FOR ROCK GRADATION REQUIREMENTS AND JOINTING DETAIL.

- CULVERT INLET PROTECTION MAINTENANCE NOTES**
- INSPECT BMPs EACH WORKDAY, AND MAINTAIN THEM IN EFFECTIVE OPERATING CONDITION. MAINTENANCE OF BMPs SHOULD BE PROACTIVE, NOT REACTIVE. INSPECT BMPs AS SOON AS POSSIBLE (AND ALWAYS WITHIN 24 HOURS) FOLLOWING A STORM THAT CAUSES SURFACE EROSION, AND PERFORM NECESSARY MAINTENANCE.
 - FREQUENT OBSERVATIONS AND MAINTENANCE ARE NECESSARY TO MAINTAIN BMPs IN EFFECTIVE OPERATING CONDITION. INSPECTIONS AND CORRECTIVE MEASURES SHOULD BE DOCUMENTED THOROUGHLY.
 - WHERE BMPs HAVE FAILED, REPAIR OR REPLACEMENT SHOULD BE INITIATED UPON DISCOVERY OF THE FAILURE.
 - SEDIMENT ACCUMULATED UPSTREAM OF THE CULVERT SHALL BE REMOVED WHEN THE SEDIMENT DEPTH IS 3/8 OF THE HEIGHT OF THE ROCK SOCK.
 - CULVERT INLET PROTECTION SHALL REMAIN IN PLACE UNTIL THE UPSTREAM DISTURBED AREA IS PERMANENTLY STABILIZED AND APPROVED BY THE LOCAL JURISDICTION.

- GENERAL INLET PROTECTION INSTALLATION NOTES**
- SEE PLAN VIEW FOR -TYPE OF INLET PROTECTION (IP-1, IP-2, IP-3, IP-4, IP-5, IP-6)
 - INLET PROTECTION SHALL BE INSTALLED PROMPTLY AFTER INLET CONSTRUCTION OR PAVING IS COMPLETE (TYPICALLY WITHIN 48 HOURS). IF A RAINFALL/STORM EVENT IS FORECAST, INSTALL INLET PROTECTION PRIOR TO ONSET OF EVENT.
 - MANY JURISDICTIONS HAVE BMP DETAILS THAT VARY FROM USDFCD STANDARD DETAILS. CONSULT WITH LOCAL JURISDICTIONS AS TO WHICH DETAIL SHOULD BE USED WHEN DIFFERENCES ARE NOTED.

- INLET PROTECTION MAINTENANCE NOTES**
- INSPECT BMPs EACH WORKDAY, AND MAINTAIN THEM IN EFFECTIVE OPERATING CONDITION. MAINTENANCE OF BMPs SHOULD BE PROACTIVE, NOT REACTIVE. INSPECT BMPs AS SOON AS POSSIBLE (AND ALWAYS WITHIN 24 HOURS) FOLLOWING A STORM THAT CAUSES SURFACE EROSION, AND PERFORM NECESSARY MAINTENANCE.
 - FREQUENT OBSERVATIONS AND MAINTENANCE ARE NECESSARY TO MAINTAIN BMPs IN EFFECTIVE OPERATING CONDITION. INSPECTIONS AND CORRECTIVE MEASURES SHOULD BE DOCUMENTED THOROUGHLY.
 - WHERE BMPs HAVE FAILED, REPAIR OR REPLACEMENT SHOULD BE INITIATED UPON DISCOVERY OF THE FAILURE.
 - SEDIMENT ACCUMULATED UPSTREAM OF INLET PROTECTION SHALL BE REMOVED AS NECESSARY TO MAINTAIN BMP EFFECTIVENESS. TYPICALLY WHEN STORAGE VOLUME REACHES SOLE OF CAPACITY, A DEPTH OF 6\"/>

- INLET PROTECTION IS TO REMAIN IN PLACE UNTIL THE UPSTREAM DISTURBED AREA IS PERMANENTLY STABILIZED, UNLESS THE LOCAL JURISDICTION APPROVES EARLIER REMOVAL OF INLET PROTECTION IN STREETS.**

- WHEN INLET PROTECTION AT AREA INLETS IS REMOVED, THE DISTURBED AREA SHALL BE COVERED WITH TOP SOIL, SEEDED AND MULCHED, OR OTHERWISE STABILIZED IN A MANNER APPROVED BY THE LOCAL JURISDICTION.**

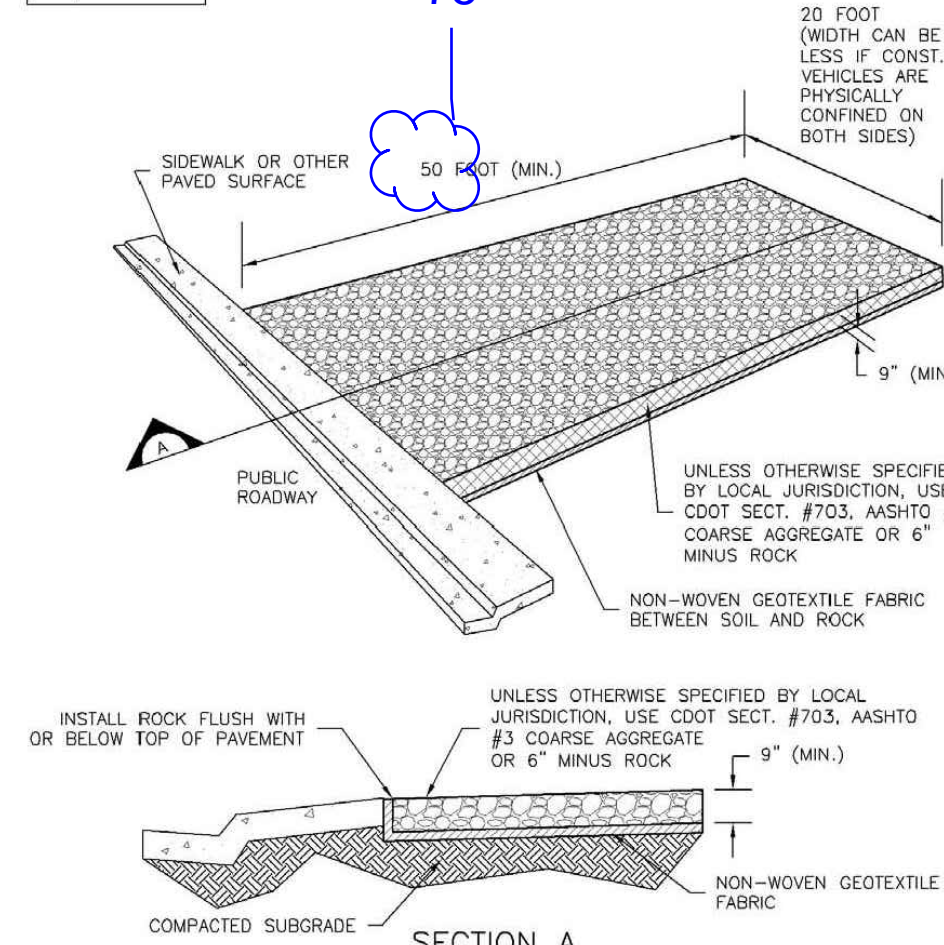
- NOTE: MANY JURISDICTIONS HAVE BMP DETAILS THAT VARY FROM USDFCD STANDARD DETAILS. CONSULT WITH LOCAL JURISDICTIONS AS TO WHICH DETAIL SHOULD BE USED WHEN DIFFERENCES ARE NOTED.**

- NOTE: THE DETAILS INCLUDED WITH THIS FACT SHEET SHOW COMMONLY USED, CONVENTIONAL METHODS OF INLET PROTECTION IN THE DENVER METROPOLITAN AREA. THERE ARE MANY PROPRIETARY INLET PROTECTION METHODS ON THE MARKET. USDFCD NEITHER ENDORSES NOR DISCOURAGES USE OF PROPRIETARY INLET PROTECTION. HOWEVER, IN THE EVENT PROPRIETARY METHODS ARE USED, THE APPROPRIATE DETAIL FROM THE MANUFACTURER MUST BE INCLUDED IN THE SWMP AND THE BMP MUST BE INSTALLED AND MAINTAINED AS SHOWN IN THE MANUFACTURER'S DETAILS.**

- NOTE: SOME MUNICIPALITIES DISALLOW OR PROHIBIT THE USE OF STRAW BALES FOR INLET PROTECTION. CHECK WITH LOCAL JURISDICTION TO DETERMINE IF STRAW BALE INLET PROTECTION IS ACCEPTABLE.**



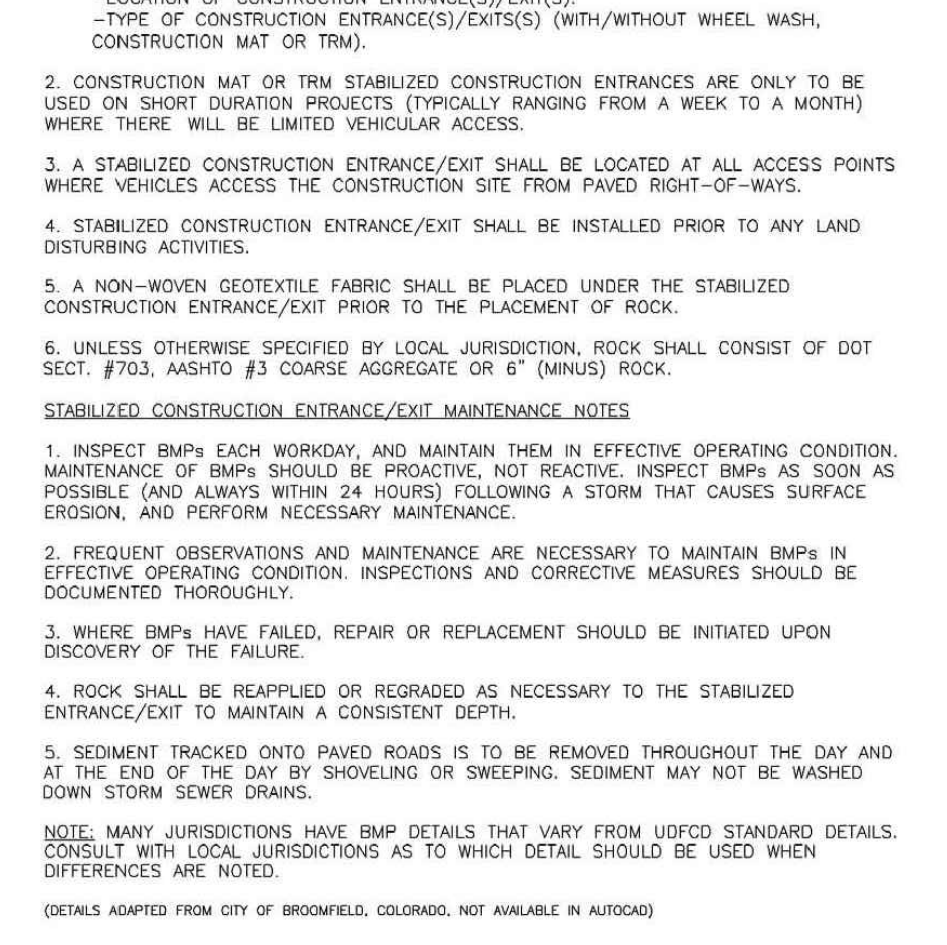
VTC-1. AGGREGATE VEHICLE TRACKING CONTROL



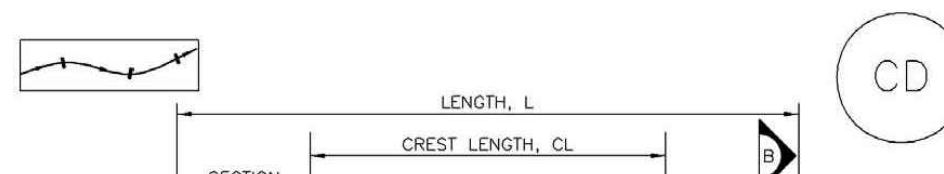
VTC-1. AGGREGATE VEHICLE TRACKING CONTROL



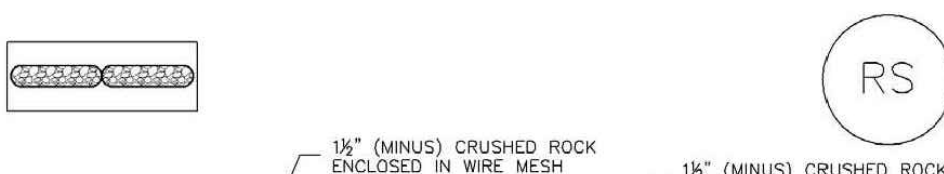
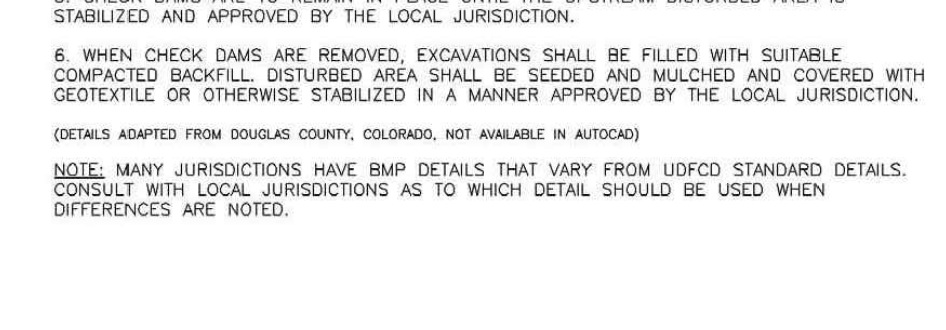
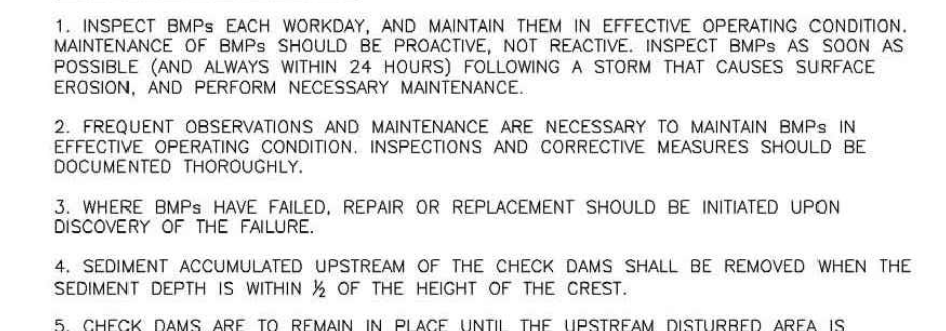
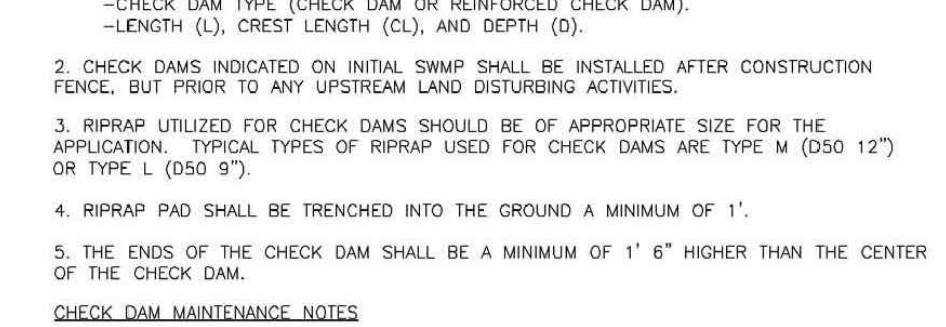
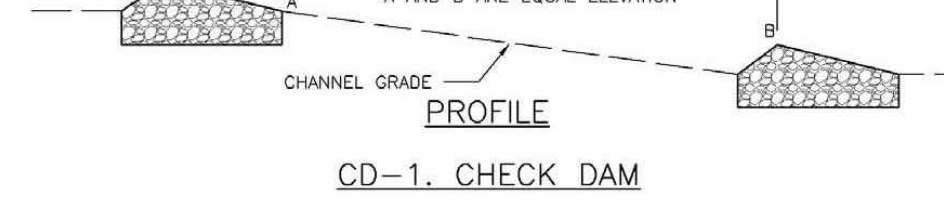
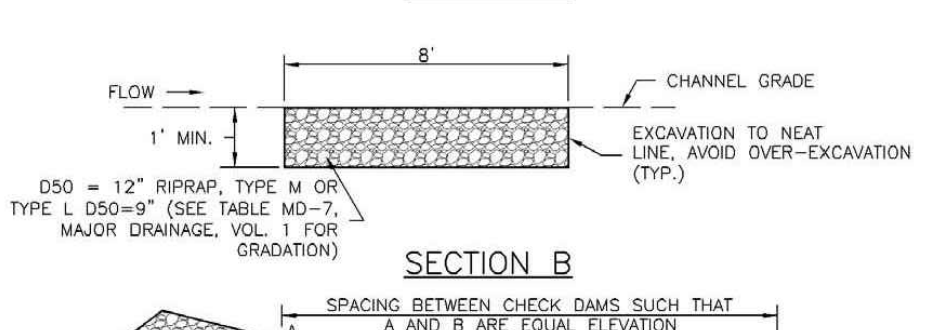
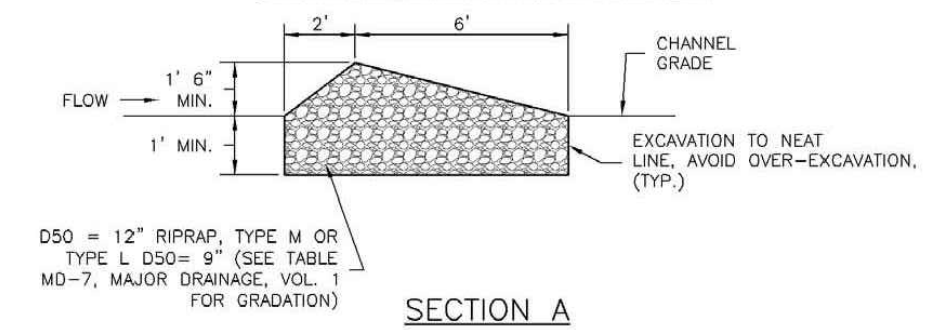
VTC-6. AGGREGATE VEHICLE TRACKING CONTROL



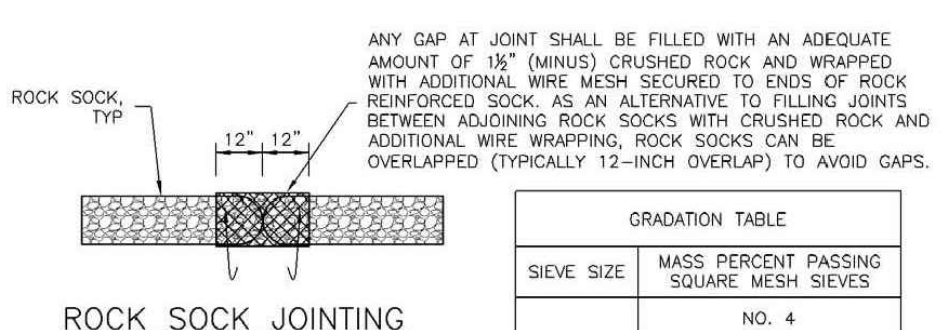
VTC-6. AGGREGATE VEHICLE TRACKING CONTROL



CD-1. CHECK DAM



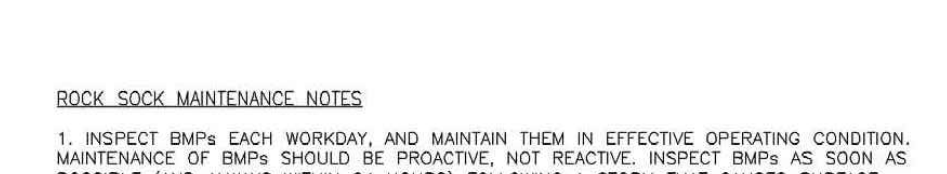
RS-1. ROCK SOCK PERIMETER CONTROL



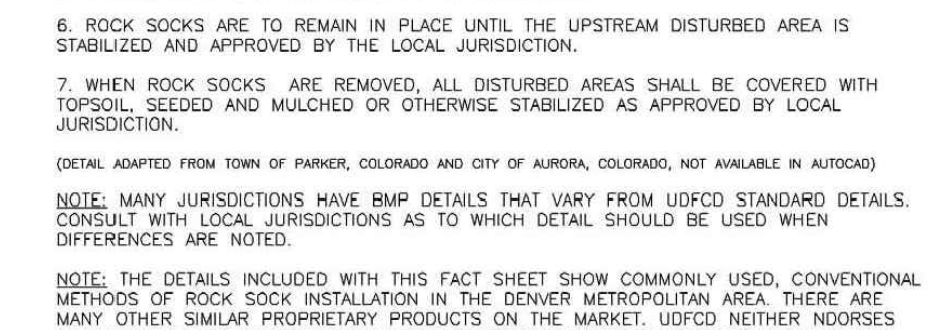
RS-1. ROCK SOCK PERIMETER CONTROL

- ROCK SOCK INSTALLATION NOTES**
- SEE PLAN VIEW FOR -LOCATIONS OF ROCK SOCKS.
 - CRUSHED ROCK SHALL BE 1/2\"/>

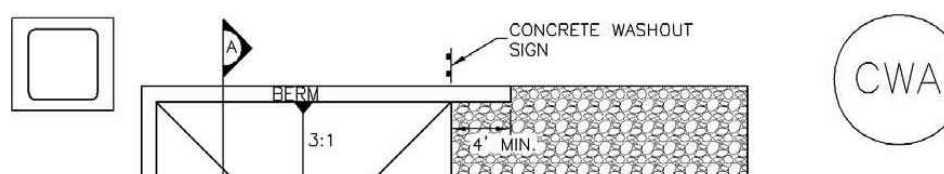
GRADE TABLE	
GRADE SIZE	MASS PERCENT PASSING SQUARE MESH SIEVES
	NO. 4
2"	100
1 1/2"	80 - 100
3/4"	20 - 50
3/8"	0 - 15
0 - 3"	0 - 5



RS-2. ROCK SOCK PERIMETER CONTROL

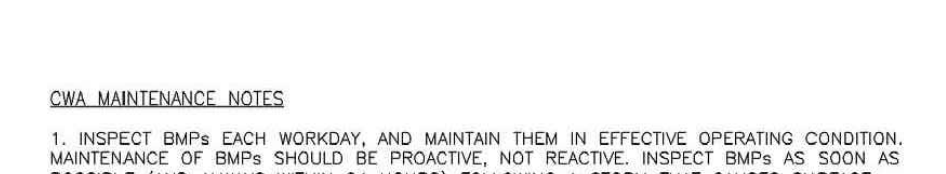


RS-2. ROCK SOCK PERIMETER CONTROL



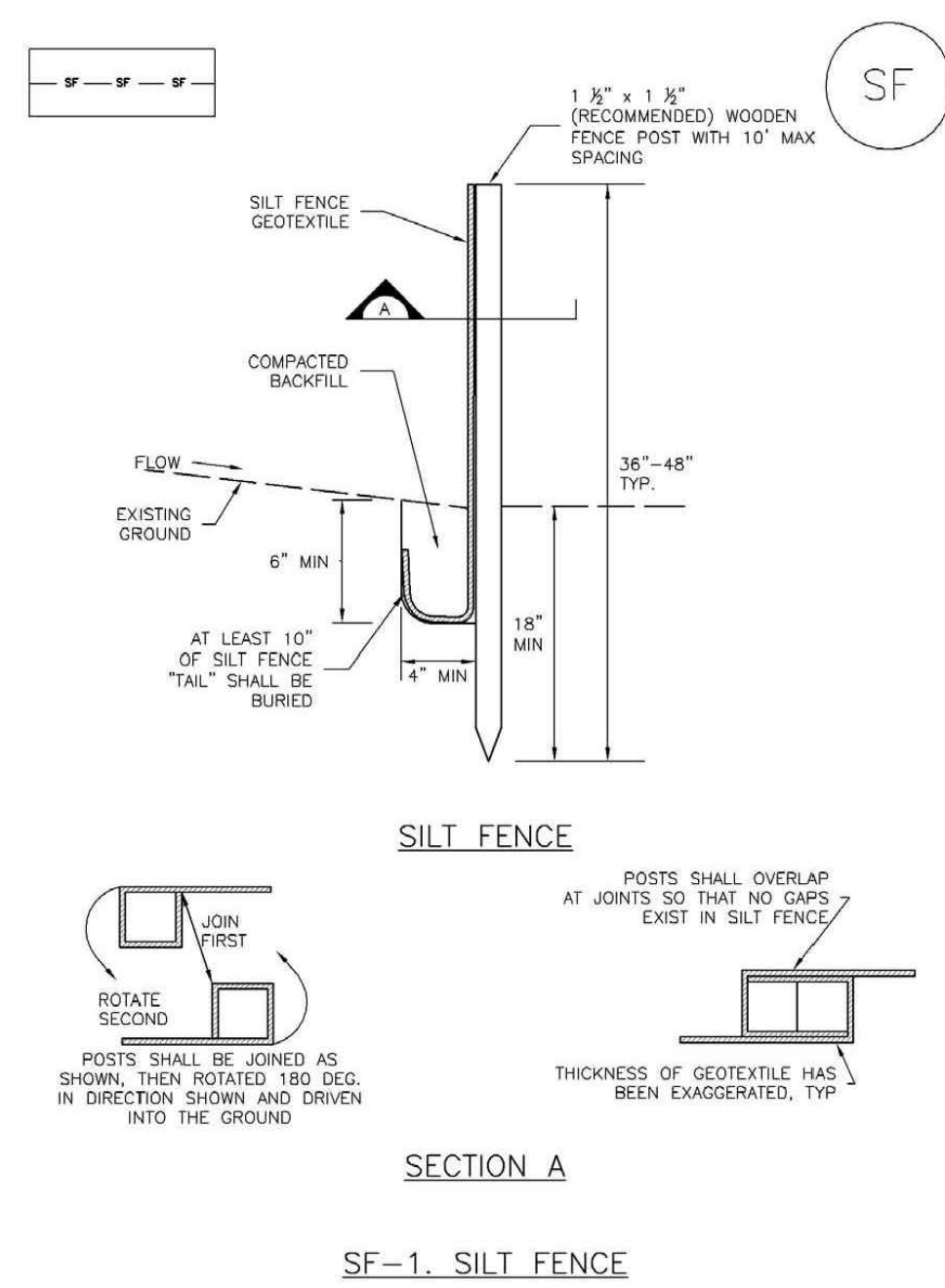
CWA-1. CONCRETE WASHOUT AREA

- CWA INSTALLATION NOTES**
- SEE PLAN VIEW FOR -CWA INSTALLATION LOCATION.
 - DO NOT LOCATE AN UNFINISHED CWA WITHIN 40\"/>



CWA-3. CONCRETE WASHOUT AREA

- CWA MAINTENANCE NOTES**
- INSPECT BMPs EACH WORKDAY, AND MAINTAIN THEM IN EFFECTIVE OPERATING CONDITION. MAINTENANCE OF BMPs SHOULD BE PROACTIVE, NOT REACTIVE. INSPECT BMPs AS SOON AS POSSIBLE (AND ALWAYS WITHIN 24 HOURS) FOLLOWING A STORM THAT CAUSES SURFACE EROSION, AND PERFORM NECESSARY MAINTENANCE.
 - FREQUENT OBSERVATIONS AND MAINTENANCE ARE NECESSARY TO MAINTAIN BMPs IN EFFECTIVE OPERATING CONDITION. INSPECTIONS AND CORRECTIVE MEASURES SHOULD BE DOCUMENTED THOROUGHLY.
 - WHERE BMPs HAVE FAILED, REPAIR OR REPLACEMENT SHOULD BE INITIATED UPON DISCOVERY OF THE FAILURE.
 - THE CWA SHALL BE REFINISHED, CLEANED, OR REPAIRED AS NECESSARY TO MAINTAIN CAPACITY FOR CONCRETE WASTE. CONCRETE MATERIALS ACCUMULATED IN PIT, SHALL BE REMOVED ONCE THE MATERIALS HAVE REACHED A DEPTH OF 2\"/>



SILT FENCE INSTALLATION NOTES

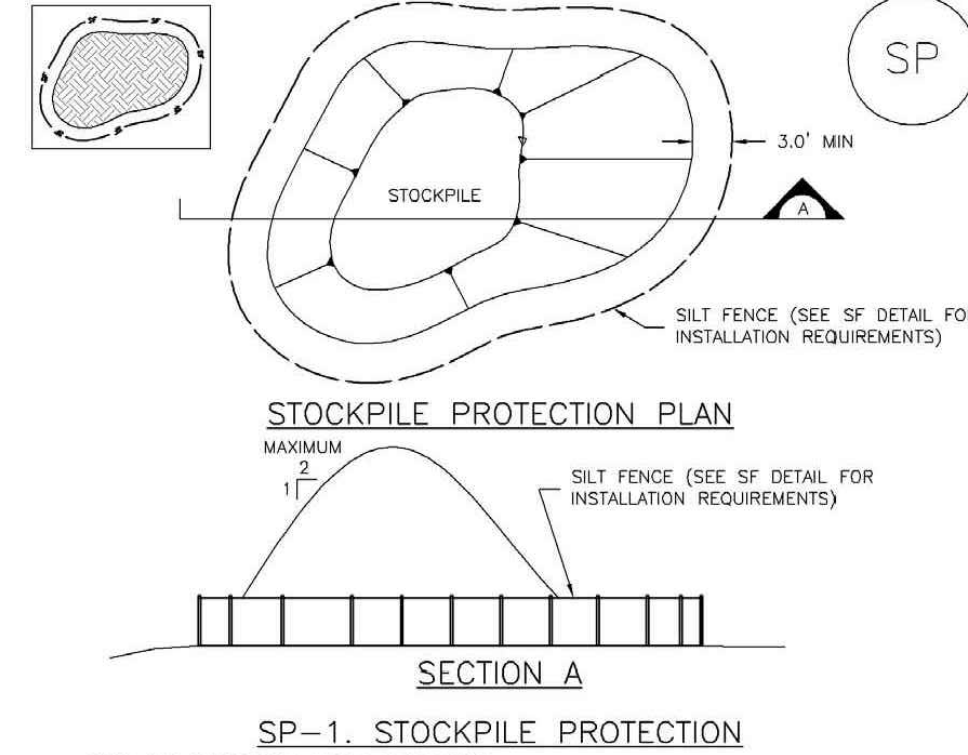
- SILT FENCE MUST BE PLACED AWAY FROM THE TOE OF THE SLOPE TO ALLOW FOR WATER PONDING. SILT FENCES AT THE TOE OF A SLOPE SHOULD BE INSTALLED IN A FLAT LOCATION AT LEAST SEVERAL FEET (2-3 FT) FROM THE TOE OF THE SLOPE TO ALLOW ROOM FOR PONDING AND DEPOSITION.
- A UNIFORM 6" X 4" ANCHOR TRENCH SHALL BE EXCAVATED USING TRENCHER OR SILT FENCE INSTALLATION EQUIP. NO FROD GRANULAR, BENCHES, OR SIMILAR EQUIPMENT SHALL BE USED.
- COMPACT ANCHOR TRENCH BY HAND WITH A "JUMPING JACK" OR BY WHEEL ROLLING. COMPACTION SHALL BE SUCH THAT SILT FENCE RESISTS BEING PULLED OUT OF ANCHOR TRENCH BY HAND.
- SILT FENCE SHALL BE PULLED TIGHT AS IT IS ANCHORED TO THE STAKES. THERE SHOULD BE NO NOTICEABLE SAG BETWEEN STAKES AFTER IT HAS BEEN ANCHORED TO THE STAKES.
- SILT FENCE FABRIC SHALL BE ANCHORED TO THE STAKES USING 1" HEAVY DUTY STAPLES OR NAILS WITH 1" HEADS. STAPLES AND NAILS SHOULD BE PLACED 3" ALONG THE FABRIC DOWN THE STAKE.
- AT THE END OF A RUN OF SILT FENCE ALONG A CONTOUR, THE SILT FENCE SHOULD BE TURNED PERPENDICULAR TO THE CONTOUR TO CREATE A "J" HOOK. THE "J" HOOK SHOULD EXTEND PERPENDICULAR TO THE CONTOUR SHOULD BE OF SUFFICIENT LENGTH TO KEEP RUNOFF FROM FLOWING AROUND THE END OF THE SILT FENCE (TYPICALLY 10' - 20').
- SILT FENCE SHALL BE INSTALLED PRIOR TO ANY LAND DISTURBING ACTIVITIES.

SILT FENCE MAINTENANCE NOTES

- INSPECT BMPs EACH WORKDAY, AND MAINTAIN THEM IN EFFECTIVE OPERATING CONDITION. MAINTENANCE OF BMPs SHOULD BE PROACTIVE, NOT REACTIVE. INSPECT BMPs AS SOON AS POSSIBLE (AND ALWAYS WITHIN 24 HOURS) FOLLOWING A STORM THAT CAUSES SURFACE EROSION, AND PERFORM NECESSARY MAINTENANCE.
- FREQUENT OBSERVATIONS AND MAINTENANCE ARE NECESSARY TO MAINTAIN BMPs IN EFFECTIVE OPERATING CONDITION. INSPECTIONS AND CORRECTIVE MEASURES SHOULD BE DOCUMENTED THOROUGHLY.
- WHERE BMPs HAVE FAILED, REPAIR OR REPLACEMENT SHOULD BE INITIATED UPON DISCOVERY OF THE FAILURE.
- SEDIMENT ACCUMULATED UPSTREAM OF THE SILT FENCE SHALL BE REMOVED AS NEEDED TO MAINTAIN THE FUNCTIONALITY OF THE BMP. TYPICALLY WHEN DEPTH OF ACCUMULATED SEDIMENTS IS APPROXIMATELY 4".
- REPAIR OR REPLACE SILT FENCE WHEN THERE ARE SIGNS OF WEAR, SUCH AS SAGGING, TEARING, OR COLLAPSE.
- SILT FENCE IS TO REMAIN IN PLACE UNTIL THE UPSTREAM DISTURBED AREA IS STABILIZED AND APPROVED BY THE LOCAL JURISDICTION, OR IS REPLACED BY AN EQUIVALENT PERIMETER SEDIMENT CONTROL BMP.
- WHEN SILT FENCE IS REMOVED, ALL DISTURBED AREAS SHALL BE COVERED WITH TOPSOIL, SEEDED AND MULCHED OR OTHERWISE STABILIZED AS APPROVED BY LOCAL JURISDICTION.

(DETAILS ADAPTED FROM THEM OF PARKER, COLORADO AND CITY OF AURORA, NOT AVAILABLE IN AURORA)

NOTE: MANY JURISDICTIONS HAVE BMP DETAILS THAT VARY FROM USDFD STANDARD DETAILS. CONSULT WITH LOCAL JURISDICTIONS AS TO WHICH DETAIL SHOULD BE USED WHEN DIFFERENCES ARE NOTED.



STOCKPILE PROTECTION PLAN

SECTION A

SP-1 STOCKPILE PROTECTION

STOCKPILE PROTECTION INSTALLATION NOTES

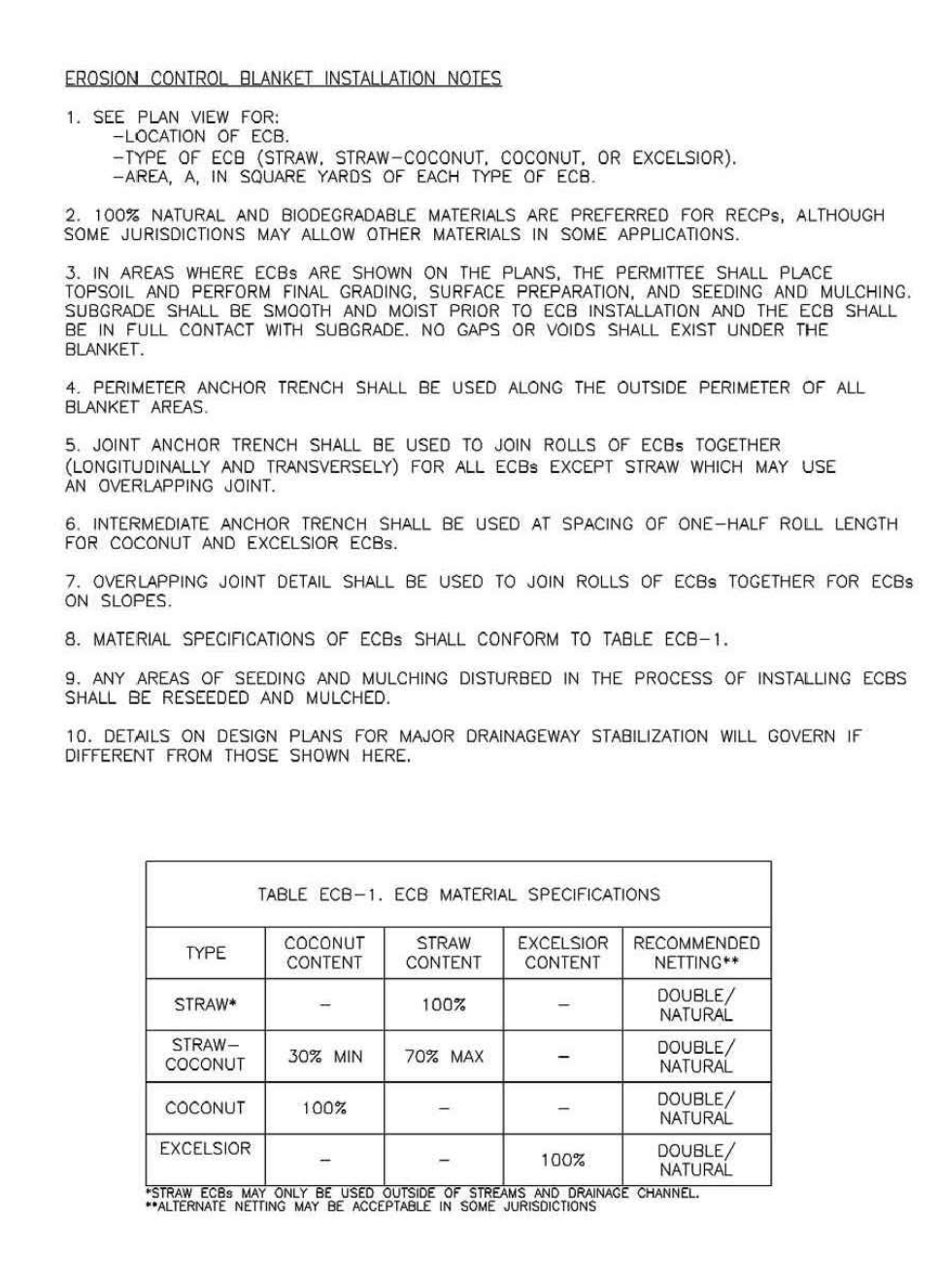
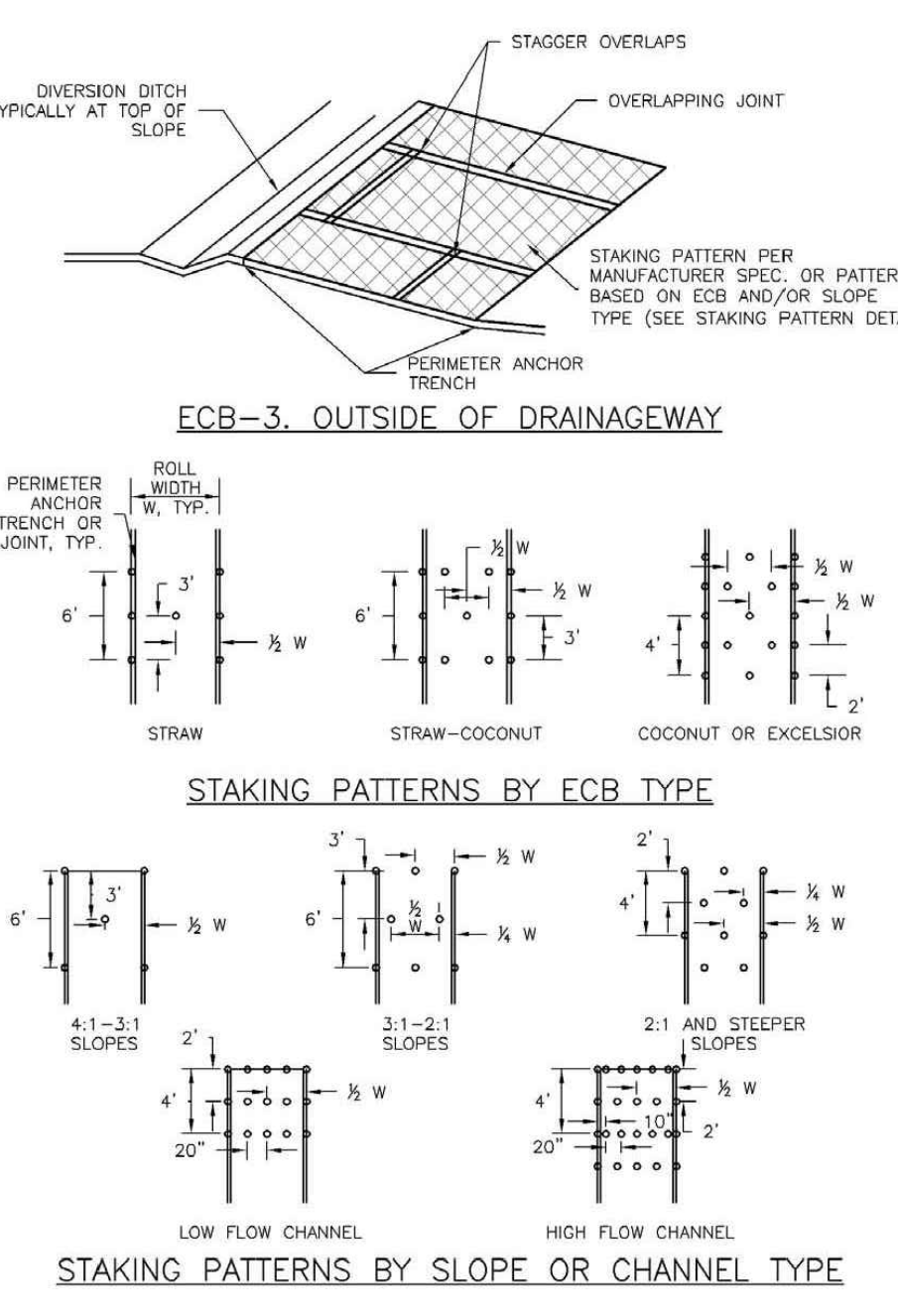
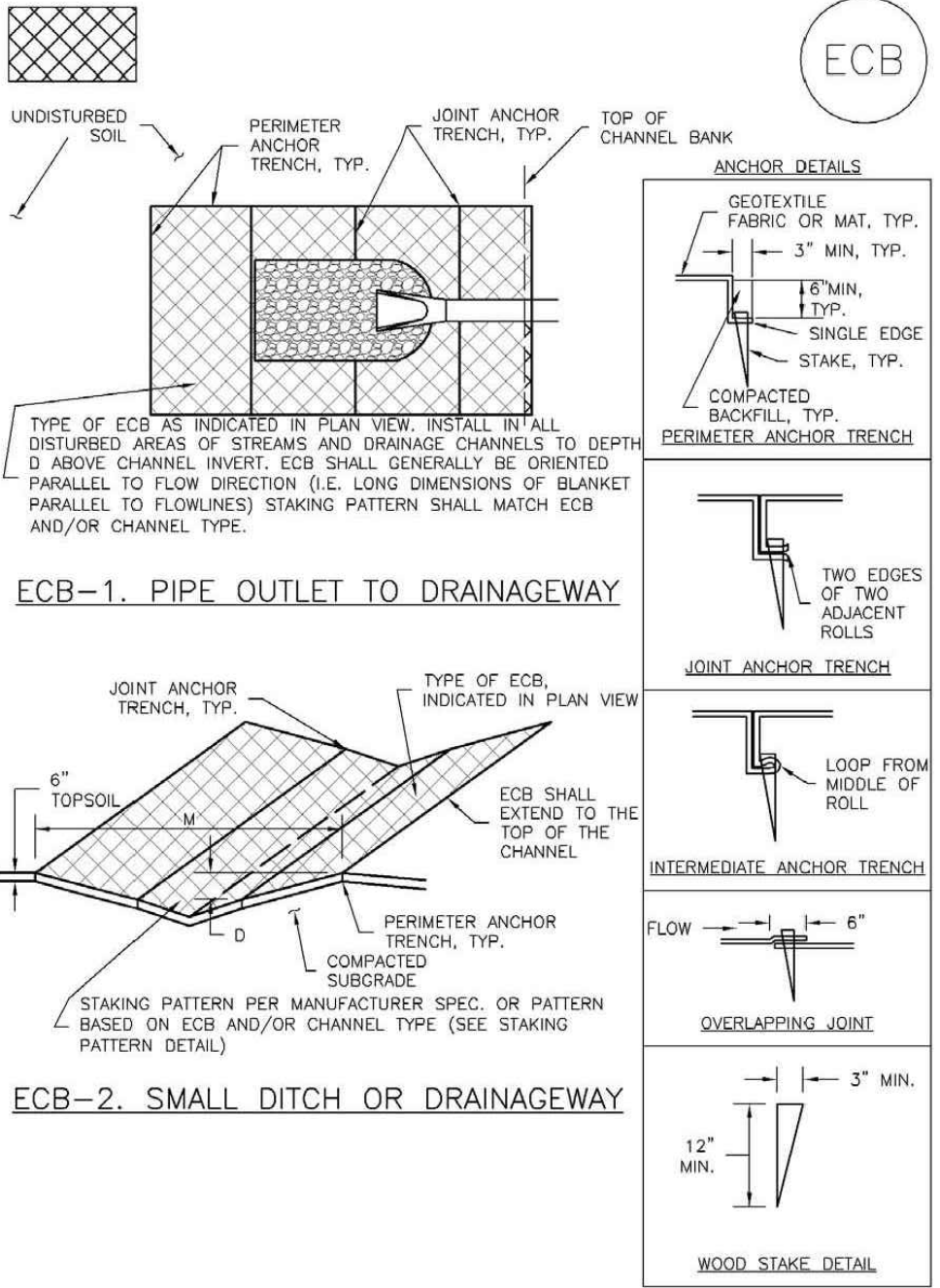
- SEE PLAN VIEW FOR:
 - LOCATION OF STOCKPILES
 - TYPE OF STOCKPILE PROTECTION
- INSTALL PERIMETER CONTROLS IN ACCORDANCE WITH THEIR RESPECTIVE DESIGN DETAILS. SILT FENCE IS SHOWN IN THE STOCKPILE PROTECTION DETAILS; HOWEVER, OTHER TYPES OF PERIMETER CONTROLS INCLUDING SEDIMENT CONTROL LOGS OR ROCK SOCKS MAY BE SUITABLE IN SOME CIRCUMSTANCES. CONSIDERATIONS FOR DETERMINING THE APPROPRIATE TYPE OF PERIMETER CONTROL FOR A STOCKPILE INCLUDE WHETHER THE STOCKPILE IS LOCATED ON A PERVIOUS OR IMPERVIOUS SURFACE, THE RELATIVE HEIGHTS OF THE PERIMETER CONTROL AND STOCKPILE, THE ABILITY OF THE PERIMETER CONTROL TO CONTAIN THE STOCKPILE WITHOUT FAILING IN THE EVENT THAT MATERIAL FROM THE STOCKPILE SHIFTS OR SLIPS, AND THE PROXIMITY AND OTHER FACTORS.
- STABILIZE THE STOCKPILE SURFACE WITH SURFACE SLOPEWORK, TEMPORARY SEEDING AND MULCHING, EROSION CONTROL, BLANKETS, OR SOIL BINDERS. SOILS STOCKPILED FOR AN EXTENDED PERIOD (TYPICALLY FOR MORE THAN 60 DAYS) SHOULD BE SEEDED AND MULCHED WITH A TEMPORARY GRASS COVER ONCE THE STOCKPILE IS PLACED (TYPICALLY WITHIN 14 DAYS). USE OF MULCH ONLY OR A SOIL BINDER IS ACCEPTABLE IF THE STOCKPILE WILL BE IN PLACE FOR A MORE LIMITED TIME PERIOD (TYPICALLY 30-60 DAYS).
- FOR TEMPORARY STOCKPILES ON THE INTERIOR PORTION OF A CONSTRUCTION SITE, WHERE OTHER CONFORMANCE CONTROLS INCLUDING PERIMETER CONTROLS ARE IN PLACE, STOCKPILE PERIMETER CONTROLS MAY NOT BE REQUIRED.

STOCKPILE PROTECTION MAINTENANCE NOTES

- INSPECT BMPs EACH WORKDAY, AND MAINTAIN THEM IN EFFECTIVE OPERATING CONDITION. MAINTENANCE OF BMPs SHOULD BE PROACTIVE, NOT REACTIVE. INSPECT BMPs AS SOON AS POSSIBLE (AND ALWAYS WITHIN 24 HOURS) FOLLOWING A STORM THAT CAUSES SURFACE EROSION, AND PERFORM NECESSARY MAINTENANCE.
- FREQUENT OBSERVATIONS AND MAINTENANCE ARE NECESSARY TO MAINTAIN BMPs IN EFFECTIVE OPERATING CONDITION. INSPECTIONS AND CORRECTIVE MEASURES SHOULD BE DOCUMENTED THOROUGHLY.
- WHERE BMPs HAVE FAILED, REPAIR OR REPLACEMENT SHOULD BE INITIATED UPON DISCOVERY OF THE FAILURE.
- IF PERIMETER PROTECTION MUST BE MOVED TO ACCESS SOIL STOCKPILE, REPLACE PERIMETER CONTROLS BY THE END OF THE WORKDAY.
- STOCKPILE PERIMETER CONTROLS CAN BE REMOVED ONCE ALL THE MATERIAL FROM THE STOCKPILE HAS BEEN USED.

(DETAILS ADAPTED FROM PARKER, COLORADO, NOT AVAILABLE IN AURORA)

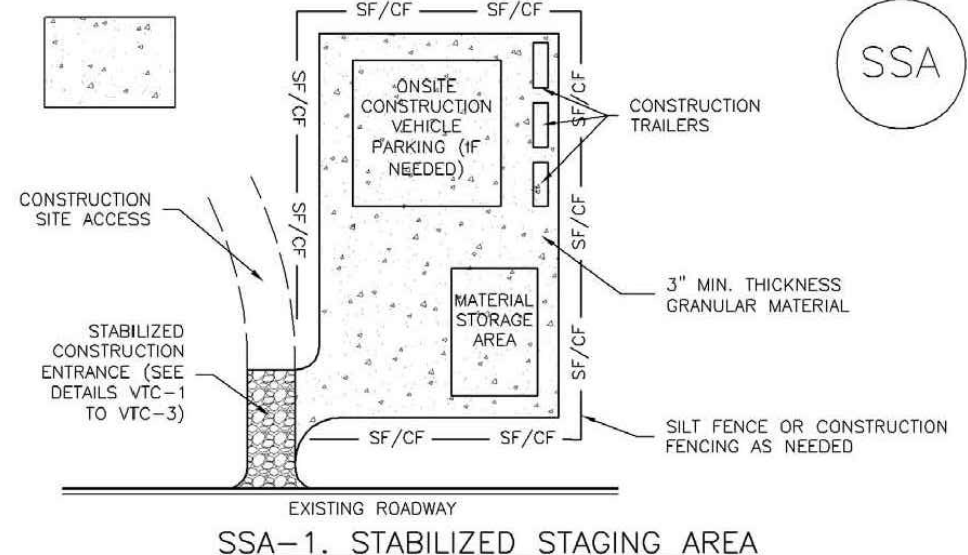
NOTE: MANY JURISDICTIONS HAVE BMP DETAILS THAT VARY FROM USDFD STANDARD DETAILS. CONSULT WITH LOCAL JURISDICTIONS AS TO WHICH DETAIL SHOULD BE USED WHEN DIFFERENCES ARE NOTED.



EROSION CONTROL BLANKET INSTALLATION NOTES

- SEE PLAN VIEW FOR:
 - LOCATION OF ECB
 - TYPE OF ECB (STRAW, STRAW-COCONUT, COCONUT, OR EXCELSIOR)
 - AREA, A IN SQUARE YARDS OF EACH TYPE OF ECB
- 100% NATURAL AND BIODEGRADABLE MATERIALS ARE PREFERRED FOR RECP, ALTHOUGH SOME JURISDICTIONS MAY ALLOW OTHER MATERIALS IN SOME APPLICATIONS.
- IN AREAS WHERE ECBs ARE SHOWN ON THE PLAN, THE PERMETER SHALL BE PLACED, TOPSOIL, AND PERFORM FINAL GRADING, SURFACE PREPARATION, AND SEEDING AND MULCHING. SUBGRADE SHALL BE SMOOTH AND MOIST PRIOR TO ECB INSTALLATION AND THE ECB SHALL BE IN FULL CONTACT WITH SUBGRADE. NO GAPS OR VOIDS SHALL EXIST UNDER THE BLANKET.
- PERMETER ANCHOR TRENCH SHALL BE USED ALONG THE OUTSIDE PERIMETER OF ALL BLANKET AREAS.
- JOINT ANCHOR TRENCH SHALL BE USED TO JOIN ROLLS OF ECBs TOGETHER (LONGITUDINALLY AND TRANSVERSELY) FOR ALL ECBs EXCEPT STRAW WHICH MAY USE AN OVERLAPPING JOINT.
- INTERMEDIATE ANCHOR TRENCH SHALL BE USED AT SPACING OF ONE-HALF ROLL LENGTH FOR COCONUT AND EXCELSIOR ECBs.
- OVERLAPPING JOINT DETAIL SHALL BE USED TO JOIN ROLLS OF ECBs TOGETHER FOR ECBs ON SLOPES.
- MATERIAL SPECIFICATIONS OF ECBs SHALL CONFORM TO TABLE ECB-1.
- ANY AREAS OF SEEDING AND MULCHING DISTURBED IN THE PROCESS OF INSTALLING ECBs SHALL BE RESEEDED AND MULCHED.
- DETAILS ON DESIGN PLANS FOR MAJOR DRAINAGEWAY STABILIZATION WILL GOVERN IF DIFFERENT FROM THOSE SHOWN HERE.

(DETAILS ADAPTED FROM DOUGLAS COUNTY, COLORADO AND TOWN OF PARKER, COLORADO, NOT AVAILABLE IN AURORA)



SSA-1. STABILIZED STAGING AREA

STABILIZED STAGING AREA INSTALLATION NOTES

- SEE PLAN VIEW FOR:
 - LOCATION OF STAGING AREA(S)
 - CONTRACTOR MAY ADJUST LOCATION AND SIZE OF STAGING AREA WITH APPROVAL FROM THE LOCAL JURISDICTION.
- STABILIZED STAGING AREA SHOULD BE APPROPRIATE FOR THE NEEDS OF THE SITE, OVERSIZING RESULTS IN A LARGER AREA TO STABILIZE FOLLOWING CONSTRUCTION.
- STAGING AREA SHALL BE STABILIZED PRIOR TO OTHER OPERATIONS ON THE SITE.
- THE STABILIZED STAGING AREA SHALL CONSIST OF A MINIMUM 3" THICK GRANULAR MATERIAL.
- UNLESS OTHERWISE SPECIFIED BY LOCAL JURISDICTION, ROCK SHALL CONSIST OF DOT SPEC. #303, M8020 #1 CORNER AGGREGATE OR #1 (UNWASH) ROCK.
- ADDITIONAL PERIMETER BMPs MAY BE REQUIRED INCLUDING BUT NOT LIMITED TO SILT FENCE AND CONSTRUCTION FENCING.

STABILIZED STAGING AREA MAINTENANCE NOTES

- INSPECT BMPs EACH WORKDAY, AND MAINTAIN THEM IN EFFECTIVE OPERATING CONDITION. MAINTENANCE OF BMPs SHOULD BE PROACTIVE, NOT REACTIVE. INSPECT BMPs AS SOON AS POSSIBLE (AND ALWAYS WITHIN 24 HOURS) FOLLOWING A STORM THAT CAUSES SURFACE EROSION, AND PERFORM NECESSARY MAINTENANCE.
- FREQUENT OBSERVATIONS AND MAINTENANCE ARE NECESSARY TO MAINTAIN BMPs IN EFFECTIVE OPERATING CONDITION. INSPECTIONS AND CORRECTIVE MEASURES SHOULD BE DOCUMENTED THOROUGHLY.
- WHERE BMPs HAVE FAILED, REPAIR OR REPLACEMENT SHOULD BE INITIATED UPON DISCOVERY OF THE FAILURE.
- ROCK SHALL BE REAPPLIED OR REGRAZED AS NECESSARY IF RUTTING OCCURS OR UNDERLYING SUBGRADE BECOMES EXPOSED.

(DETAILS ADAPTED FROM DOUGLAS COUNTY, COLORADO, NOT AVAILABLE IN AURORA)

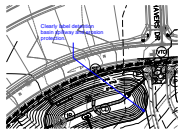
STABILIZED STAGING AREA MAINTENANCE NOTES

- INSPECT BMPs EACH WORKDAY, AND MAINTAIN THEM IN EFFECTIVE OPERATING CONDITION. MAINTENANCE OF BMPs SHOULD BE PROACTIVE, NOT REACTIVE. INSPECT BMPs AS SOON AS POSSIBLE (AND ALWAYS WITHIN 24 HOURS) FOLLOWING A STORM THAT CAUSES SURFACE EROSION, AND PERFORM NECESSARY MAINTENANCE.
- FREQUENT OBSERVATIONS AND MAINTENANCE ARE NECESSARY TO MAINTAIN BMPs IN EFFECTIVE OPERATING CONDITION. INSPECTIONS AND CORRECTIVE MEASURES SHOULD BE DOCUMENTED THOROUGHLY.
- WHERE BMPs HAVE FAILED, REPAIR OR REPLACEMENT SHOULD BE INITIATED UPON DISCOVERY OF THE FAILURE.
- ROCK SHALL BE REAPPLIED OR REGRAZED AS NECESSARY IF RUTTING OCCURS OR UNDERLYING SUBGRADE BECOMES EXPOSED.

(DETAILS ADAPTED FROM DOUGLAS COUNTY, COLORADO, NOT AVAILABLE IN AURORA)

Markup Summary

dsdrice (11)



Subject: Callout
Page Label: [2] 21126-00-7.1GREC - CV01
Author: dsdrice
Date: 7/2/2018 3:25:56 PM
Color: ■

Clearly label detention basin spillway and erosion protection.



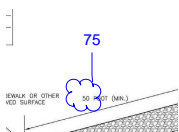
Subject: Callout
Page Label: [2] 21126-00-7.1GREC - CV01
Author: dsdrice
Date: 7/3/2018 1:16:33 PM
Color: ■

Add std note: "1. Construction may not commence until a Construction Permit is obtained from Planning and Community Development (PCD) and a preconstruction conference is held with PCD Inspections."



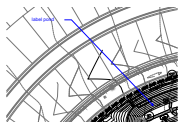
Subject: Cloud+
Page Label: [2] 21126-00-7.1GREC - CV01
Author: dsdrice
Date: 7/3/2018 1:18:07 PM
Color: ■

2019?



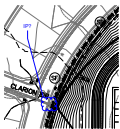
Subject: Cloud+
Page Label: [3] 21126-00-7.2BMPDT - C7.2
Author: dsdrice
Date: 7/3/2018 1:20:15 PM
Color: ■

75



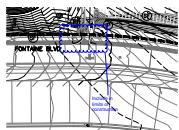
Subject: Callout
Page Label: [2] 21126-00-7.1GREC - CV01
Author: dsdrice
Date: 7/3/2018 1:24:09 PM
Color: ■

label pond



Subject: Cloud+
Page Label: [2] 21126-00-7.1GREC - CV01
Author: dsdrice
Date: 7/3/2018 1:26:34 PM
Color: ■

IP?



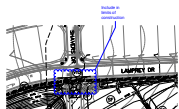
Subject: Cloud+
Page Label: [2] 21126-00-7.1GREC - CV01
Author: dsdrice
Date: 7/3/2018 1:33:57 PM
Color: ■

Include in limits of construction



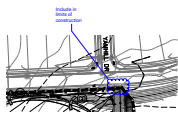
Subject: Cloud+
Page Label: [2] 21126-00-7.1GREC - CV01
Author: dsdrice
Date: 7/3/2018 1:34:14 PM
Color: ■

Include in limits of construction



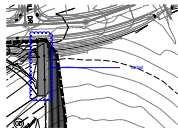
Subject: Cloud+
Page Label: [2] 21126-00-7.1GREC - CV01
Author: dsdrice
Date: 7/3/2018 1:34:41 PM
Color: ■

Include in limits of construction



Subject: Cloud+
Page Label: [2] 21126-00-7.1GREC - CV01
Author: dsdrice
Date: 7/3/2018 1:40:10 PM
Color:

Include in limits of construction



Subject: Cloud+
Page Label: [2] 21126-00-7.1GREC - CV01
Author: dsdrice
Date: 7/3/2018 1:40:17 PM
Color:

Label

AutoCAD SHX Text (229)



Subject:
Page Label: [2] 21126-00-7.1GREC - CV01
Author: AutoCAD SHX Text
Date:
Color:

Copyright 2017 The LKA Partners, Inc. This document and



Subject:
Page Label: [2] 21126-00-7.1GREC - CV01
Author: AutoCAD SHX Text
Date:
Color:

SWALE



Subject:
Page Label: [2] 21126-00-7.1GREC - CV01
Author: AutoCAD SHX Text
Date:
Color:

STATEMENTS: THE CITY OF COLORADO SPRINGS RECOGNIZES THE DESIGN ENGINEER AS HAVING RESPONSIBILITY FOR THE DESIGN; THE CITY HAS LIMITED ITS SCOPE OF REVIEW ACCORDINGLY. RESUBMITTAL IS REQUIRED IF CONSTRUCTION HAS NOT COMMENCED WITHIN 180 DAYS OF REVIEW DATE.



Subject:
Page Label: [2] 21126-00-7.1GREC - CV01
Author: AutoCAD SHX Text
Date:
Color:

THESE DETAILED PLANS AND SPECIFICATIONS WERE PREPARED UNDER MY DIRECTION AND SUPERVISION. SAID PLANS AND SPECIFICATIONS HAVE BEEN PREPARED ACCORDING TO CRITERIA ESTABLISHED BY THE COUNTY FOR THE DETAILED ROADWAY, DRAINAGE, GRADING AND EROSION CONTROL PLANS AND SPECIFICATIONS, AND SAID PLANS AND SPECIFICATIONS ARE IN CONFORMITY WITH APPLICABLE MASTER DRAINAGE PLANS AND MASTER TRANSPORTATION PLANS. SAID PLANS AND SPECIFICATIONS MEET THE PURPOSES FOR WHICH THE PARTICULAR ROADWAY AND DRAINAGE FACILITIES ARE DESIGNED AND ARE CORRECT TO THE BEST OF MY KNOWLEDGE AND BELIEF. I ACCEPT RESPONSIBILITY FOR ANY LIABILITY CAUSED BY ANY NEGLIGENT ACTS, ERRORS OR OMISSIONS ON MY PART IN PREPARATION OF THESE DETAILED PLANS AND SPECIFICATIONS. TIM D. MCCONNELL
 DATE DATE P.E.# 33797 33797



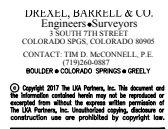
Subject:
Page Label: [2] 21126-00-7.1GREC - CV01
Author: AutoCAD SHX Text
Date:
Color:

SP



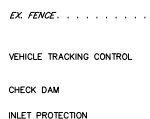
Subject:
Page Label: [2] 21126-00-7.1GREC - CV01
Author: AutoCAD SHX Text
Date:
Color:

SWALE



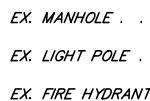
Subject:
Page Label: [3] 21126-00-7.2BMPDT - C7.2
Author: AutoCAD SHX Text
Date:
Color:

BOULDER COLORADO SPRINGS GREELY



Subject:
Page Label: [2] 21126-00-7.1GREC - CV01
Author: AutoCAD SHX Text
Date:
Color:

VEHICLE TRACKING CONTROL



Subject:
Page Label: [2] 21126-00-7.1GREC - CV01
Author: AutoCAD SHX Text
Date:
Color:

EX. LIGHT POLE



Subject:
Page Label: [3] 21126-00-7.2BMPDT - C7.2
Author: AutoCAD SHX Text
Date:
Color:

C



Subject:
Page Label: [2] 21126-00-7.1GREC - CV01
Author: AutoCAD SHX Text
Date:
Color:

IP



Subject:
Page Label: [2] 21126-00-7.1GREC - CV01
Author: AutoCAD SHX Text
Date:
Color:

CD

LEGEND



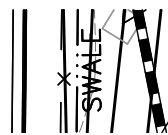
Subject:
Page Label: [2] 21126-00-7.1GREC - CV01
Author: AutoCAD SHX Text
Date:
Color:

%%ULEGEND



Subject:
Page Label: [2] 21126-00-7.1GREC - CV01
Author: AutoCAD SHX Text
Date:
Color:

RS



Subject:
Page Label: [2] 21126-00-7.1GREC - CV01
Author: AutoCAD SHX Text
Date:
Color:

SWALE



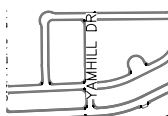
Subject:
Page Label: [2] 21126-00-7.1GREC - CV01
Author: AutoCAD SHX Text
Date:
Color:

SF



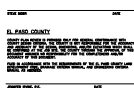
Subject:
Page Label: [2] 21126-00-7.1GREC - CV01
Author: AutoCAD SHX Text
Date:
Color:

SWALE



Subject:
Page Label: [2] 21126-00-7.1GREC - CV01
Author: AutoCAD SHX Text
Date:
Color:

YAMHILL DR



Subject:
Page Label: [2] 21126-00-7.1GREC - CV01
Author: AutoCAD SHX Text
Date:
Color:

COUNTY PLAN REVIEW IS PROVIDED ONLY FOR GENERAL CONFORMANCE WITH COUNTY DESIGN CRITERIA. THE COUNTY IS NOT RESPONSIBLE FOR THE ACCURACY AND ADEQUACY OF THE DESIGN, DIMENSIONS, AND/OR ELEVATIONS WHICH SHALL BE CONFIRMED AT THE JOB SITE. THE COUNTY THROUGH THE APPROVAL OF THIS DOCUMENT ASSUMES NO RESPONSIBILITY FOR THE COMPLETENESS AND/OR ACCURACY OF THIS DOCUMENT. FILED IN ACCORDANCE WITH THE REQUIREMENTS OF THE EL PASO COUNTY LAND DEVELOPMENT CODE, DRAINAGE CRITERIA MANUAL, AND ENGINEERING CRITERIA MANUAL AS AMENDED. JENNIFER IRVINE, P.E. DATE DATE COUNTY ENGINEER



Subject:
Page Label: [2] 21126-00-7.1GREC - CV01
Author: AutoCAD SHX Text
Date:
Color:

The LKA Partners, Inc. Unauthorized copying, disclosure or



Subject:
Page Label: [2] 21126-00-7.1GREC - CV01
Author: AutoCAD SHX Text
Date:
Color:

VTC



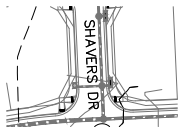
Subject: FILL CUT
Page Label: [2] 21126-00-7.1GREC - CV01
Author: AutoCAD SHX Text
Date:
Color:



Subject: PLAN
Page Label: [2] 21126-00-7.1GREC - CV01
Author: AutoCAD SHX Text
Date:
Color:



Subject: LAMPREY
Page Label: [2] 21126-00-7.1GREC - CV01
Author: AutoCAD SHX Text
Date:
Color:



Subject: SHAVERS DR
Page Label: [2] 21126-00-7.1GREC - CV01
Author: AutoCAD SHX Text
Date:
Color:



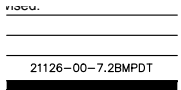
Subject: BOULDER COLORADO SPRINGS GREELY
Page Label: [4] 21126-00-7.2BMPDT - C7.3
Author: AutoCAD SHX Text
Date:
Color:



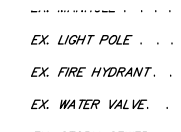
Subject: LP
Page Label: [2] 21126-00-7.1GREC - CV01
Author: AutoCAD SHX Text
Date:
Color:



Subject: SF
Page Label: [2] 21126-00-7.1GREC - CV01
Author: AutoCAD SHX Text
Date:
Color:



Subject: 21126-00-7.2BMPDT
Page Label: [3] 21126-00-7.2BMPDT - C7.2
Author: AutoCAD SHX Text
Date:
Color:



Subject: EX. FIRE HYDRANT
Page Label: [2] 21126-00-7.1GREC - CV01
Author: AutoCAD SHX Text
Date:
Color:

TIM D. MCCONNELL
P.E.# 33797

OWNER'S STATEMENT
THE OWNER WILL COMPLY WITH THE RE
CONTROL PLAN.

STEVE MEIER

Subject:

Page Label: [2] 21126-00-7.1GREC - CV01

Author: AutoCAD SHX Text

Date:

Color:

%%UOWNER'S STATEMENT

Project No. 17.001
The LKA Partners Incorporated
SHEET 1 OF 1

Subject:

Page Label: [3] 21126-00-7.2BMPDT - C7.2

Author: AutoCAD SHX Text

Date:

Color:

SHEET OF 1



Subject:

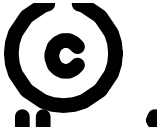
Page Label: [2] 21126-00-7.1GREC - CV01

Author: AutoCAD SHX Text

Date:

Color:

IP



Subject:

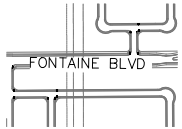
Page Label: [2] 21126-00-7.1GREC - CV01

Author: AutoCAD SHX Text

Date:

Color:

c



Subject:

Page Label: [2] 21126-00-7.1GREC - CV01

Author: AutoCAD SHX Text

Date:

Color:

FONTAINE BLVD

GRADING &
EROSION CONTR
PLAN

Subject:

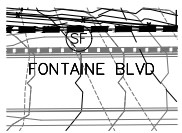
Page Label: [2] 21126-00-7.1GREC - CV01

Author: AutoCAD SHX Text

Date:

Color:

GRADING &



Subject:

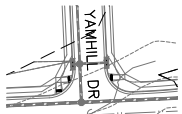
Page Label: [2] 21126-00-7.1GREC - CV01

Author: AutoCAD SHX Text

Date:

Color:

FONTAINE BLVD



Subject:

Page Label: [2] 21126-00-7.1GREC - CV01

Author: AutoCAD SHX Text

Date:

Color:

YAMHILL DR



Subject:

Page Label: [2] 21126-00-7.1GREC - CV01

Author: AutoCAD SHX Text

Date:

Color:

SWALE



Subject:
Page Label: [2] 21126-00-7.1GREC - CV01
Author: AutoCAD SHX Text
Date:
Color:

TIMING ANTICIPATED STARTING AND COMPLETION TIME PERIOD OF SITE GRADING: SUMMER 2018 - SUMMER 2019 EXPECTED DATE ON WHICH THE FINAL STABILIZATION WILL BE COMPLETED: SUMMER 2018 AREAS TOTAL AREA OF THE SITE TO BE CLEARED, EXCAVATED OR GRADED: APPROXIMATELY 25.1 ACRES RECEIVING WATERS NAME OF RECEIVING WATERS: JIMMY CAMP CREEK SOIL TYPE MANZANST CLAY LOAM, HYDROLOGIC GROUP 'C' SOIL AND RAZOR-MIDWAY COMPLEX, HYDROLOGIC GROUP 'D' SOIL FLOODPLAIN FIRM PANEL 08041C1000 F MARCH 17, 1997



Subject:
Page Label: [2] 21126-00-7.1GREC - CV01
Author: AutoCAD SHX Text
Date:
Color:

SWALE



Subject:
Page Label: [2] 21126-00-7.1GREC - CV01
Author: AutoCAD SHX Text
Date:
Color:

SWALE

LIMIT OF DISTURBANCE/
 DIRECTION OF FLOW
 CUT/FILL DELINEATION

Subject:
Page Label: [2] 21126-00-7.1GREC - CV01
Author: AutoCAD SHX Text
Date:
Color:

DIRECTION OF FLOW



Subject:
Page Label: [2] 21126-00-7.1GREC - CV01
Author: AutoCAD SHX Text
Date:
Color:

CWA



Subject:
Page Label: [2] 21126-00-7.1GREC - CV01
Author: AutoCAD SHX Text
Date:
Color:

FILL CUT



Subject:
Page Label: [4] 21126-00-7.2BMPDT - C7.3
Author: AutoCAD SHX Text
Date:
Color:

construction use are prohibited by copyright law.



Subject:
Page Label: [2] 21126-00-7.1GREC - CV01
Author: AutoCAD SHX Text
Date:
Color:

SWALE



Subject:
Page Label: [4] 21126-00-7.2BMPDT - C7.3
Author: AutoCAD SHX Text
Date:
Color:

The LKA Partners, Inc. Unauthorized copying, disclosure or



Subject:
Page Label: [2] 21126-00-7.1GREC - CV01
Author: AutoCAD SHX Text
Date:
Color:

The LKA Partners, Inc. Unauthorized copying, disclosure or

PROPOSED INTERMEDIATE CONTOUR
PROPOSED INDEX CONTOUR . . .
EX. INTERMEDIATE CONTOUR . . .
EX. INDEX CONTOUR
PROPOSED STORM SEWER . . .

Subject:
Page Label: [2] 21126-00-7.1GREC - CV01
Author: AutoCAD SHX Text
Date:
Color:

EX. INTERMEDIATE CONTOUR



Subject:
Page Label: [2] 21126-00-7.1GREC - CV01
Author: AutoCAD SHX Text
Date:
Color:

SWALE

ION CON
COVER

Subject:
Page Label: [2] 21126-00-7.1GREC - CV01
Author: AutoCAD SHX Text
Date:
Color:

COVER



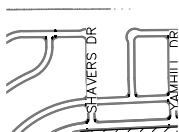
Subject:
Page Label: [2] 21126-00-7.1GREC - CV01
Author: AutoCAD SHX Text
Date:
Color:

IP



Subject:
Page Label: [2] 21126-00-7.1GREC - CV01
Author: AutoCAD SHX Text
Date:
Color:

SWALE



Subject:
Page Label: [2] 21126-00-7.1GREC - CV01
Author: AutoCAD SHX Text
Date:
Color:

SHAVERS DR

CHECK DAM
INLET PROTECTION
ROCK SOCKS

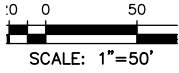
Subject:
Page Label: [2] 21126-00-7.1GREC - CV01
Author: AutoCAD SHX Text
Date:
Color:

INLET PROTECTION



Subject:
 Page Label: [2] 21126-00-7.1GREC - CV01
 Author: AutoCAD SHX Text
 Date:
 Color:

WV



Subject:
 Page Label: [2] 21126-00-7.1GREC - CV01
 Author: AutoCAD SHX Text
 Date:
 Color:

SCALE: 1"=50'

- 6240 -

Subject:
 Page Label: [2] 21126-00-7.1GREC - CV01
 Author: AutoCAD SHX Text
 Date:
 Color:

6240

SBN

Subject:
 Page Label: [4] 21126-00-7.2BMPDT - C7.3
 Author: AutoCAD SHX Text
 Date:
 Color:

SBN

SHEET INDEX
 EC-1 COVER SHEET
 EC-2 GRADING AND EROSION CONTROL PLAN
 EC-3 BMP DETAILS
 EC-4 BMP DETAILS

Subject:
 Page Label: [2] 21126-00-7.1GREC - CV01
 Author: AutoCAD SHX Text
 Date:
 Color:

EC-2 GRADING AND EROSION CONTROL PLAN



Subject:
 Page Label: [2] 21126-00-7.1GREC - CV01
 Author: AutoCAD SHX Text
 Date:
 Color:

CLARION DR

Engineers & Surveyors
 1500 17TH STREET
 COLORADO SPRINGS, COLORADO 80905
 CONTACT: TIM D. MACDONNELL, P.E.
 (719) 226-1087
 BOLLIGER & COLLEADRO, SPRINGS & GREELEY
 © Copyright 2017 The LKA Partners, Inc. This document and
 the information contained herein may not be reproduced or
 modified in any way without the express written permission of
 The LKA Partners, Inc. Unauthorised copying, distribution or
 construction use are prohibited by copyright law.

Subject:
 Page Label: [3] 21126-00-7.2BMPDT - C7.2
 Author: AutoCAD SHX Text
 Date:
 Color:

Copyright 2017 The LKA Partners, Inc. This document and



Subject:
 Page Label: [2] 21126-00-7.1GREC - CV01
 Author: AutoCAD SHX Text
 Date:
 Color:

FILL CUT

100% FLOODPLAIN STATEMENT
 FLOODPLAIN STATEMENT: THE PROPERTY IS INDICATED AS BEING LOCATED IN ZONE "X" ON THE NFIP FLOOD INSURANCE RATE MAP FOR EL PASO COUNTY, COLORADO, PANEL NUMBER 08041 C 1000 F, DATED MARCH 17, 1997. ZONE "X" IS DESCRIBED AS AREAS LOCATED OUTSIDE OF THE 500 YEAR FLOOD HAZARD AREA.

Subject:
 Page Label: [2] 21126-00-7.1GREC - CV01
 Author: AutoCAD SHX Text
 Date:
 Color:

FLOODPLAIN STATEMENT: THE PROPERTY IS INDICATED AS BEING LOCATED IN ZONE "X" ON THE NFIP FLOOD INSURANCE RATE MAP FOR EL PASO COUNTY, COLORADO, PANEL NUMBER 08041 C 1000 F, DATED MARCH 17, 1997. ZONE "X" IS DESCRIBED AS AREAS LOCATED OUTSIDE OF THE 500 YEAR FLOOD HAZARD AREA.



Subject:
Page Label: [2] 21126-00-7.1GREC - CV01
Author: AutoCAD SHX Text
Date:
Color:

SF



Subject:
Page Label: [2] 21126-00-7.1GREC - CV01
Author: AutoCAD SHX Text
Date:
Color:

TDM



Subject:
Page Label: [2] 21126-00-7.1GREC - CV01
Author: AutoCAD SHX Text
Date:
Color:

SF



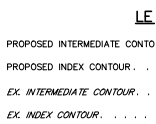
Subject:
Page Label: [2] 21126-00-7.1GREC - CV01
Author: AutoCAD SHX Text
Date:
Color:

0



Subject:
Page Label: [2] 21126-00-7.1GREC - CV01
Author: AutoCAD SHX Text
Date:
Color:

IP



Subject:
Page Label: [2] 21126-00-7.1GREC - CV01
Author: AutoCAD SHX Text
Date:
Color:

PROPOSED INDEX CONTOUR



Subject:
Page Label: [2] 21126-00-7.1GREC - CV01
Author: AutoCAD SHX Text
Date:
Color:

EROSION CONTROL



Subject:
Page Label: [3] 21126-00-7.2BMPDT - C7.2
Author: AutoCAD SHX Text
Date:
Color:

EROSION CONTROL



Subject:
Page Label: [2] 21126-00-7.1GREC - CV01
Author: AutoCAD SHX Text
Date:
Color:

SWALE

CONTACT: TIM D. MCCONNELL, P.E.
717.260.8987
Boulder • Colorado Springs • Greeley
© Copyright 2017 The LKA Partners, Inc. This document and the information contained herein may not be reproduced or transmitted in any form or by any means, electronic or mechanical, including photocopying, recording, or by any information storage and retrieval system, without the express written permission of The LKA Partners, Inc. Unauthorized copying, disclosure or construction use are prohibited by copyright law.

hool
d, CO
ifric 3
Main Sheet
L CO 80911

Subject:
Page Label: [2] 21126-00-7.1GREC - CV01
Author: AutoCAD SHX Text
Date:
Color:

construction use are prohibited by copyright law.

EX. SANITARY;
EX. FENCE.

Subject:
Page Label: [2] 21126-00-7.1GREC - CV01
Author: AutoCAD SHX Text
Date:
Color:

EX. FENCE

(CD)

Subject:
Page Label: [2] 21126-00-7.1GREC - CV01
Author: AutoCAD SHX Text
Date:
Color:

CD

1

Subject:
Page Label: [2] 21126-00-7.1GREC - CV01
Author: AutoCAD SHX Text
Date:
Color:

1

Engineers & Surveyors
3 SOUTH TUS STREET
COLORADO SPRING, COLORADO 80905
CONTACT: TIM D. MCCONNELL, P.E.
717.260.8987
Boulder • Colorado Springs • Greeley
© Copyright 2017 The LKA Partners, Inc. This document and the information contained herein may not be reproduced or transmitted in any form or by any means, electronic or mechanical, including photocopying, recording, or by any information storage and retrieval system, without the express written permission of The LKA Partners, Inc. Unauthorized copying, disclosure or construction use are prohibited by copyright law.

01 0 3
Main Sheet
0111

Subject:
Page Label: [2] 21126-00-7.1GREC - CV01
Author: AutoCAD SHX Text
Date:
Color:

Copyright 2017 The LKA Partners, Inc. This document and

(CD)

Subject:
Page Label: [2] 21126-00-7.1GREC - CV01
Author: AutoCAD SHX Text
Date:
Color:

CD

LEGEND
PROPOSED INTERMEDIATE CONTOUR . . .
PROPOSED INDEX CONTOUR
EX. INTERMEDIATE CONTOUR
EX. INDEX CONTOUR

Subject:
Page Label: [2] 21126-00-7.1GREC - CV01
Author: AutoCAD SHX Text
Date:
Color:

PROPOSED INTERMEDIATE CONTOUR

3 SOUTH TUS STREET
COLORADO SPRING, COLORADO 80905
CONTACT: TIM D. MCCONNELL, P.E.
717.260.8987
Boulder • Colorado Springs • Greeley
© Copyright 2017 The LKA Partners, Inc. This document and the information contained herein may not be reproduced or transmitted in any form or by any means, electronic or mechanical, including photocopying, recording, or by any information storage and retrieval system, without the express written permission of The LKA Partners, Inc. Unauthorized copying, disclosure or construction use are prohibited by copyright law.

ool
CO
lcl 3
Main Sheet
0111

Subject:
Page Label: [2] 21126-00-7.1GREC - CV01
Author: AutoCAD SHX Text
Date:
Color:

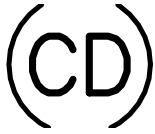
excerpted from without the express written permission of

DREXEL, BARKELL & CO.
Engineers & Surveyors
3 SOUTH TUS STREET
COLORADO SPRING, COLORADO 80905
CONTACT: TIM D. MCCONNELL, P.E.
717.260.8987
Boulder • Colorado Springs • Greeley
© Copyright 2017 The LKA Partners, Inc. This document and the information contained herein may not be reproduced or transmitted in any form or by any means, electronic or mechanical, including photocopying, recording, or by any information storage and retrieval system, without the express written permission of The LKA Partners, Inc. Unauthorized copying, disclosure or construction use are prohibited by copyright law.

Subject:
Page Label: [2] 21126-00-7.1GREC - CV01
Author: AutoCAD SHX Text
Date:
Color:

BOULDER COLORADO SPRINGS GREELEY

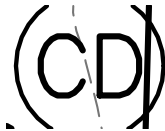
Subject:
Page Label: [2] 21126-00-7.1GREC - CV01 SHEET OF 1
Author: AutoCAD SHX Text
Date:
Color:



Subject:
Page Label: [2] 21126-00-7.1GREC - CV01 CD
Author: AutoCAD SHX Text
Date:
Color:



Subject:
Page Label: [2] 21126-00-7.1GREC - CV01 FH
Author: AutoCAD SHX Text
Date:
Color:



Subject:
Page Label: [2] 21126-00-7.1GREC - CV01 CD
Author: AutoCAD SHX Text
Date:
Color:



Subject:
Page Label: [2] 21126-00-7.1GREC - CV01 IP
Author: AutoCAD SHX Text
Date:
Color:



Subject:
Page Label: [2] 21126-00-7.1GREC - CV01
Author: AutoCAD SHX Text
Date:
Color:

IN ACCORDANCE WITH ECM SECTION 1.12, THESE CONSTRUCTION DOCUMENTS WILL BE VALID FOR CONSTRUCTION FOR A PERIOD OF 2 YEARS FROM THE DATE SIGNED BY THE EL PASO COUNTY ENGINEER. IF CONSTRUCTION HAS NOT STARTED WITHIN THOSE 2 YEARS, THE PLANS WILL NEED TO BE RESUBMITTED FOR APPROVAL, INCLUDING PAYMENT OF REVIEW FEES AT THE PLANNING AND COMMUNITY DEVELOPMENT DIRECTOR'S DISCRETION.

Subject:
Page Label: [2] 21126-00-7.1GREC - CV01 SHEET OF 1
Author: AutoCAD SHX Text
Date:
Color:



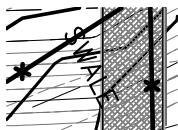
Subject:
Page Label: [2] 21126-00-7.1GREC - CV01 IP
Author: AutoCAD SHX Text
Date:
Color:

ROCK SOCKS

SILT FENCING

CONCRETE WASH

Subject:
Page Label: [2] 21126-00-7.1GREC - CV01 SILT FENCING
Author: AutoCAD SHX Text
Date:
Color:



Subject:

Page Label: [2] 21126-00-7.1GREC - CV01

SWALE

Author: AutoCAD SHX Text

Date:

Color:



Subject:

Page Label: [2] 21126-00-7.1GREC - CV01

LP

Author: AutoCAD SHX Text

Date:

Color:



Subject:
Page Label: [2] 21126-00-7.1GREC - CV01
Author: AutoCAD SHX Text
Date:
Color:

1. STORMWATER DISCHARGES FROM CONSTRUCTION SITES SHALL NOT CAUSE OR THREATEN TO CAUSE POLLUTION, CONTAMINATION, OR STORMWATER DISCHARGES FROM CONSTRUCTION SITES SHALL NOT CAUSE OR THREATEN TO CAUSE POLLUTION, CONTAMINATION, OR DEGRADATION OF STATE WATERS. ALL WORK AND EARTH DISTURBANCE SHALL BE DONE IN A MANNER THAT MINIMIZES POLLUTION OF ANY ON-SITE OR OFF SITE WATERS, INCLUDING WETLANDS. 2. NOTWITHSTANDING ANYTHING DEPICTED IN THESE PLANS IN WORDS OR GRAPHIC REPRESENTATION, ALL DESIGN AND CONSTRUCTION NOTWITHSTANDING ANYTHING DEPICTED IN THESE PLANS IN WORDS OR GRAPHIC REPRESENTATION, ALL DESIGN AND CONSTRUCTION RELATED TO ROADS, STORM DRAINAGE AND EROSION CONTROL SHALL CONFORM TO THE STANDARDS AND REQUIREMENTS OF THE MOST RECENT VERSION OF THE RELEVANT ADOPTED EL PASO COUNTY STANDARDS, INCLUDING THE LAND DEVELOPMENT CODE, THE ENGINEERING CRITERIA MANUAL, THE DRAINAGE CRITERIA MANUAL, AND THE DRAINAGE CRITERIA MANUAL VOLUME 2. ANY DEVIATIONS TO REGULATIONS AND STANDARDS MUST BE REQUESTED, AND APPROVED, IN WRITING. 3. A SEPARATE STORMWATER MANAGEMENT PLAN (SMWP) FOR THIS PROJECT SHALL BE COMPLETED AND AN EROSION AND A SEPARATE STORMWATER MANAGEMENT PLAN (SMWP) FOR THIS PROJECT SHALL BE COMPLETED AND AN EROSION AND STORMWATER QUALITY CONTROL PERMIT (ESQCP) ISSUED PRIOR TO COMMENCING CONSTRUCTION. DURING CONSTRUCTION THE SWMP IS THE RESPONSIBILITY OF THE DESIGNATED STORMWATER MANAGER, SHALL BE LOCATED ON SITE AT ALL TIMES AND SHALL BE KEPT UP TO DATE WITH WORK PROGRESS AND CHANGES IN THE FIELD. 4. ONCE THE ESQCP HAS BEEN ISSUED, THE CONTRACTOR MAY INSTALL THE INITIAL STAGE EROSION AND SEDIMENT CONTROL BMPS ONCE THE ESQCP HAS BEEN ISSUED, THE CONTRACTOR MAY INSTALL THE INITIAL STAGE EROSION AND SEDIMENT CONTROL BMPS AS INDICATED ON THE GEC. A PRECONSTRUCTION MEETING BETWEEN THE CONTRACTOR, ENGINEER, AND EL PASO COUNTY WILL BE HELD PRIOR TO ANY CONSTRUCTION. IT IS THE RESPONSIBILITY OF THE APPLICANT TO COORDINATE THE MEETING TIME AND PLACE WITH COUNTY INSPECTIONS STAFF. 5. SOIL EROSION CONTROL MEASURES FOR ALL SLOPES, CHANNELS, DITCHES, OR ANY DISTURBED LAND AREA SHALL BE COMPLETED SOIL EROSION CONTROL MEASURES FOR ALL SLOPES, CHANNELS, DITCHES, OR ANY DISTURBED LAND AREA SHALL BE COMPLETED WITHIN 21 CALENDAR DAYS AFTER FINAL GRADING, OR FINAL EARTH DISTURBANCE, HAS BEEN COMPLETED. DISTURBED AREAS AND STOCKPILES WHICH ARE NOT AT FINAL GRADE BUT WILL REMAIN DORMANT FOR LONGER THAN 30 DAYS

EX. WATER VALVE.
EX. STORM SEWER
EX. SANITARY SEWER

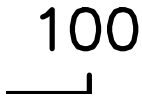
Subject:
Page Label: [2] 21126-00-7.1GREC - CV01
Author: AutoCAD SHX Text
Date:
Color:

EX. STORM SEWER



Subject:
Page Label: [2] 21126-00-7.1GREC - CV01
Author: AutoCAD SHX Text
Date:
Color:

3:1



Subject:
Page Label: [2] 21126-00-7.1GREC - CV01
Author: AutoCAD SHX Text
Date:
Color:

100



Subject:
Page Label: [2] 21126-00-7.1GREC - CV01
Author: AutoCAD SHX Text
Date:
Color:

SBN

EROSION CONTROL
COVER

Subject:
Page Label: [2] 21126-00-7.1GREC - CV01
Author: AutoCAD SHX Text
Date:
Color:

EROSION CONTROL

EX. WATER VALVE.
EX. STORM SEWER
EX. SANITARY SEWER
EX. FENCE.

Subject:
Page Label: [2] 21126-00-7.1GREC - CV01
Author: AutoCAD SHX Text
Date:
Color:

EX. SANITARY SEWER

CONTACT: SIM D. MACCONNELL, P.E.
17.000000
BOLLINGER & COLQUHOUN SPRINGS & CREEK
© Copyright 2017 The LKA Partners, Inc. This document and the information contained herein may not be reproduced or transmitted in any form or by any means, electronic or mechanical, including photocopying, recording, or by any information storage and retrieval system, without the prior written permission of The LKA Partners, Inc. Unauthorized copies, distribution or reproduction are prohibited by copyright law.
hool
d, CO
istrict 3
Map Sheet
1, CO 80811

Subject:
Page Label: [3] 21126-00-7.2BMPDT - C7.2
Author: AutoCAD SHX Text
Date:
Color:

construction use are prohibited by copyright law.

Project No. 17.001
The LKA Partners Incorporated
SHEET 1 OF 1

Subject:
Page Label: [4] 21126-00-7.2BMPDT - C7.3
Author: AutoCAD SHX Text
Date:
Color:

SHEET OF 1



Subject:
Page Label: [2] 21126-00-7.1GREC - CV01
Author: AutoCAD SHX Text
Date:
Color:

IP



Subject: CD
 Page Label: [2] 21126-00-7.1GREC - CV01
 Author: AutoCAD SHX Text
 Date:
 Color:



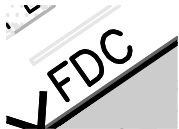
Subject: c
 Page Label: [4] 21126-00-7.2BMPDT - C7.3
 Author: AutoCAD SHX Text
 Date:
 Color:

TDM

Subject: TDM
 Page Label: [2] 21126-00-7.1GREC - CV01
 Author: AutoCAD SHX Text
 Date:
 Color:

-6205-

Subject: 6205
 Page Label: [2] 21126-00-7.1GREC - CV01
 Author: AutoCAD SHX Text
 Date:
 Color:



Subject: FDC
 Page Label: [2] 21126-00-7.1GREC - CV01
 Author: AutoCAD SHX Text
 Date:
 Color:



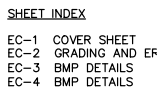
Subject: CD
 Page Label: [2] 21126-00-7.1GREC - CV01
 Author: AutoCAD SHX Text
 Date:
 Color:



Subject: excerpted from without the express written permission of
 Page Label: [3] 21126-00-7.2BMPDT - C7.2
 Author: AutoCAD SHX Text
 Date:
 Color:

20

Subject: 20
 Page Label: [2] 21126-00-7.1GREC - CV01
 Author: AutoCAD SHX Text
 Date:
 Color:

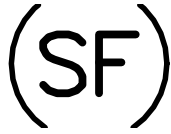


Subject: EC-3 BMP DETAILS
 Page Label: [2] 21126-00-7.1GREC - CV01
 Author: AutoCAD SHX Text
 Date:
 Color:

EX. FIRE HYDRANT.
EX. WATER VALVE.
EX. STORM SEWER

Subject:
Page Label: [2] 21126-00-7.1GREC - CV01
Author: AutoCAD SHX Text
Date:
Color:

EX. WATER VALVE



Subject:
Page Label: [2] 21126-00-7.1GREC - CV01
Author: AutoCAD SHX Text
Date:
Color:

SF



Subject:
Page Label: [2] 21126-00-7.1GREC - CV01
Author: AutoCAD SHX Text
Date:
Color:

MH

LIMIT OF DISTURBANCE/CL
DIRECTION OF FLOW
CUT/FILL DELINEATION



Subject:
Page Label: [2] 21126-00-7.1GREC - CV01
Author: AutoCAD SHX Text
Date:
Color:

CUT/FILL DELINEATION



Subject:
Page Label: [2] 21126-00-7.1GREC - CV01
Author: AutoCAD SHX Text
Date:
Color:

THE OWNER WILL COMPLY WITH THE
REQUIREMENTS OF THE GRADING AND
EROSION CONTROL PLAN. STEVE MEIER
DATE DATE



Subject:
Page Label: [3] 21126-00-7.2BMPDT - C7.2
Author: AutoCAD SHX Text
Date:
Color:

TDM



Subject:
Page Label: [2] 21126-00-7.1GREC - CV01
Author: AutoCAD SHX Text
Date:
Color:

IP



Subject:
Page Label: [4] 21126-00-7.2BMPDT - C7.3
Author: AutoCAD SHX Text
Date:
Color:

the information contained herein may not be
reproduced or



Subject:
Page Label: [2] 21126-00-7.1GREC - CV01
Author: AutoCAD SHX Text
Date:
Color:

CLARION DR

NOTE
IN ACCORDANCE

Subject: %%UNOTE
Page Label: [2] 21126-00-7.1GREC - CV01
Author: AutoCAD SHX Text
Date:
Color:

EX. INTERMEDIATE CONTOUR
EX. INDEX CONTOUR
PROPOSED STORM SEWER
PROPOSED INLET
PROPOSED SITE LIGHTING

Subject: PROPOSED STORM SEWER
Page Label: [2] 21126-00-7.1GREC - CV01
Author: AutoCAD SHX Text
Date:
Color:

CONTACT TIM D. MCCONNELL, P.E.
712.254.4883
TIM@DCCORP.COM
© Copyright 2017. All rights reserved. No part of this document may be reproduced or transmitted in any form or by any means, electronic or mechanical, including photocopying, recording, or by any information storage and retrieval system, without permission in writing from the copyright owner. All other rights reserved. Construction use is prohibited by copyright law.
hoo
d, CO
District 3
Mark Shaver
CORPORATION

Subject: construction use are prohibited by copyright law.
Page Label: [2] 21126-00-7.1GREC - CV01
Author: AutoCAD SHX Text
Date:
Color:



Subject: FDC
Page Label: [2] 21126-00-7.1GREC - CV01
Author: AutoCAD SHX Text
Date:
Color:

SHEET INDEX
EC-1 COVER SHEET
EC-2 GRADING AND EROSION CONTROL
EC-3 BMP DETAILS
EC-4 BMP DETAILS

Subject: EC-1 COVER SHEET
Page Label: [2] 21126-00-7.1GREC - CV01
Author: AutoCAD SHX Text
Date:
Color:



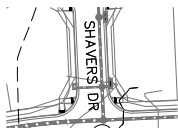
Subject: SF
Page Label: [2] 21126-00-7.1GREC - CV01
Author: AutoCAD SHX Text
Date:
Color:



Subject: SF
Page Label: [2] 21126-00-7.1GREC - CV01
Author: AutoCAD SHX Text
Date:
Color:



Subject: 3:1
Page Label: [2] 21126-00-7.1GREC - CV01
Author: AutoCAD SHX Text
Date:
Color:



Subject: SHAVERS DR
Page Label: [2] 21126-00-7.1GREC - CV01
Author: AutoCAD SHX Text
Date:
Color:



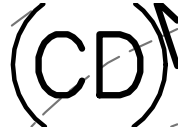
Subject:
Page Label: [2] 21126-00-7.1GREC - CV01
Author: AutoCAD SHX Text
Date:
Color:

SF

STAKEPILE PROTECTION
 PERMANENT SEEDING
 STABILIZED STAGING AREA
 LIMIT OF DISTURBANCE/CONSTRUCTION
 DIRECTION OF FLOW

Subject:
Page Label: [2] 21126-00-7.1GREC - CV01
Author: AutoCAD SHX Text
Date:
Color:

STABILIZED STAGING AREA



Subject:
Page Label: [2] 21126-00-7.1GREC - CV01
Author: AutoCAD SHX Text
Date:
Color:

CD

ENGINEERS/SURVEYORS
 15601 21ST STREET
 COLORADO SPRING, COLORADO 80905
 CONTACT: TIM D. MACCONNELL, P.E.
 CTS00000000
 SOLIDATA & COLORADO SPRING & GREELY
 © Copyright 2017 by all persons. No alteration or
 reproduction of content herein may be made without
 express written consent of the author. All rights reserved.
 The US Patent, the Intellectual Property, designs or
 inventions are not prohibited by copyright law.

20 00 213
 80011

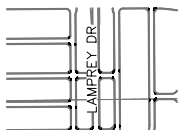
Subject:
Page Label: [3] 21126-00-7.2BMPDT - C7.2
Author: AutoCAD SHX Text
Date:
Color:

the information contained herein may not be reproduced or



Subject:
Page Label: [2] 21126-00-7.1GREC - CV01
Author: AutoCAD SHX Text
Date:
Color:

IP



Subject:
Page Label: [2] 21126-00-7.1GREC - CV01
Author: AutoCAD SHX Text
Date:
Color:

LAMPREY DR



Subject:
Page Label: [2] 21126-00-7.1GREC - CV01
Author: AutoCAD SHX Text
Date:
Color:

SITE

50

Subject:
Page Label: [2] 21126-00-7.1GREC - CV01
Author: AutoCAD SHX Text
Date:
Color:

50



Subject:
Page Label: [2] 21126-00-7.1GREC - CV01
Author: AutoCAD SHX Text
Date:
Color:

LAMPREY DR



Subject: IP
 Page Label: [2] 21126-00-7.1GREC - CV01
 Author: AutoCAD SHX Text
 Date:
 Color:



Subject: CUT FILL
 Page Label: [2] 21126-00-7.1GREC - CV01
 Author: AutoCAD SHX Text
 Date:
 Color:



Subject: IP
 Page Label: [2] 21126-00-7.1GREC - CV01
 Author: AutoCAD SHX Text
 Date:
 Color:



Subject: SBN
 Page Label: [2] 21126-00-7.1GREC - CV01
 Author: AutoCAD SHX Text
 Date:
 Color:



Subject: VTC
 Page Label: [2] 21126-00-7.1GREC - CV01
 Author: AutoCAD SHX Text
 Date:
 Color:

PROPOSED STORM S
 PROPOSED INLET
 PROPOSED SITE LIG-

Subject: PROPOSED INLET
 Page Label: [2] 21126-00-7.1GREC - CV01
 Author: AutoCAD SHX Text
 Date:
 Color:

LEGAL DESCRIPTION:
 TRACT J PIONEER
 LANDING AT LORSON RANCH FILING NO 2

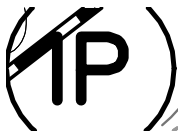
Subject: LEGAL DESCRIPTION: TRACT J PIONEER
 Page Label: [2] 21126-00-7.1GREC - CV01
 Author: AutoCAD SHX Text
 Date:
 Color:

Engineers & Surveyors
 FORTUITO PERINELLI
 COLORADO SURV. COLORADO 80905
 CONTACT: TIM J. MCCONNELL, P.E.
 17325 S. WOODS DRIVE
 SUITE 100
 DENVER, CO 80248
 © Copyright 2017 The LKA Partners, Inc. No material or
 information contained herein may be reproduced or
 transmitted in any form or by any means, electronic,
 mechanical, photocopying, recording, or by any
 information storage and retrieval system, without the
 prior written permission of The LKA Partners, Inc. Unauthorised copying, disclosure or
 construction use are prohibited by copyright law.

Subject: Copyright 2017 The LKA Partners, Inc. This
 Page Label: [4] 21126-00-7.2BMPDT - C7.3
 Author: AutoCAD SHX Text
 Date:
 Color:

50

Subject: 50
 Page Label: [2] 21126-00-7.1GREC - CV01
 Author: AutoCAD SHX Text
 Date:
 Color:



Subject: IP
 Page Label: [2] 21126-00-7.1GREC - CV01
 Author: AutoCAD SHX Text
 Date:
 Color:

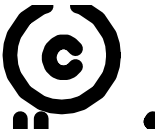
SHEET INDEX

EC-1 COVER S
 EC-2 GRADING

Subject: %%USHEET INDEX
 Page Label: [2] 21126-00-7.1GREC - CV01
 Author: AutoCAD SHX Text
 Date:
 Color:

THIS DRAWING IS THE PROPERTY OF THE ENGINEER AND IS NOT TO BE REPRODUCED OR TRANSMITTED IN ANY FORM OR BY ANY MEANS, ELECTRONIC OR MECHANICAL, INCLUDING PHOTOCOPYING, RECORDING, OR BY ANY INFORMATION STORAGE AND RETRIEVAL SYSTEM, WITHOUT THE WRITTEN PERMISSION OF THE ENGINEER.

Subject: SITE BENCHMARK: FIMS MONUMENT NUMBER F204 LOCATED AT THE NORTHWEST CORNER OF FONTAINE BLVD AND COTTONWOOD GROVE DR. ELEV=5724.072 (NGVD 29)
 Page Label: [2] 21126-00-7.1GREC - CV01
 Author: AutoCAD SHX Text
 Date:
 Color:



Subject: c
 Page Label: [2] 21126-00-7.1GREC - CV01
 Author: AutoCAD SHX Text
 Date:
 Color:

TDM

Subject: TDM
 Page Label: [4] 21126-00-7.2BMPDT - C7.3
 Author: AutoCAD SHX Text
 Date:
 Color:

EX. INTERMEDIATE CONT.
 EX. INDEX CONTOUR.
 PROPOSED STORM SEWER

Subject: EX. INDEX CONTOUR
 Page Label: [2] 21126-00-7.1GREC - CV01
 Author: AutoCAD SHX Text
 Date:
 Color:

ROCK SOCKS
 SILT FENCING

Subject: ROCK SOCKS
 Page Label: [2] 21126-00-7.1GREC - CV01
 Author: AutoCAD SHX Text
 Date:
 Color:

1504 DI 21126-00-7.1GREC - CV01
 COLORADO DESIGN CENTER, INC.
 CONTACT: TIM D. MACDONELL, P.E.
 DIVISION: CIVIL
 BOLDER & COLORADO SPRINGS & GREELY

© Copyright 2017 The US Patent, Inc. This document and its contents are the property of The US Patent, Inc. and are not to be reproduced or transmitted in any form or by any means, electronic or mechanical, including photocopying, recording, or by any information storage and retrieval system, without the express written permission of The US Patent, Inc. Unauthorized copying, distribution or modification are not permitted by copyright law.

00
 00
 1 of 3
 10 Sheets
 0 8/2017

Subject: excerpted from without the express written permission of
 Page Label: [2] 21126-00-7.1GREC - CV01
 Author: AutoCAD SHX Text
 Date:
 Color:

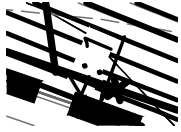
SBN

Subject: SBN
 Page Label: [3] 21126-00-7.2BMPDT - C7.2
 Author: AutoCAD SHX Text
 Date:
 Color:



Subject:
Page Label: [2] 21126-00-7.1GREC - CV01
Author: AutoCAD SHX Text
Date:
Color:

the information contained herein may not be reproduced or



Subject:
Page Label: [2] 21126-00-7.1GREC - CV01
Author: AutoCAD SHX Text
Date:
Color:

4:1



Subject:
Page Label: [2] 21126-00-7.1GREC - CV01
Author: AutoCAD SHX Text
Date:
Color:

CD



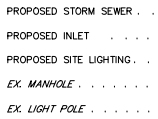
Subject:
Page Label: [2] 21126-00-7.1GREC - CV01
Author: AutoCAD SHX Text
Date:
Color:

SWALE



Subject:
Page Label: [2] 21126-00-7.1GREC - CV01
Author: AutoCAD SHX Text
Date:
Color:

IP



Subject:
Page Label: [2] 21126-00-7.1GREC - CV01
Author: AutoCAD SHX Text
Date:
Color:

PROPOSED SITE LIGHTING



Subject:
Page Label: [2] 21126-00-7.1GREC - CV01
Author: AutoCAD SHX Text
Date:
Color:

SF



Subject:
Page Label: [2] 21126-00-7.1GREC - CV01
Author: AutoCAD SHX Text
Date:
Color:

SF



Subject:
Page Label: [2] 21126-00-7.1GREC - CV01
Author: AutoCAD SHX Text
Date:
Color:

CD

SION CONT
DETAILS

Subject: DETAILS
Page Label: [3] 21126-00-7.2BMPDT - C7.2
Author: AutoCAD SHX Text
Date:
Color:



Subject: FFE=5751.50
Page Label: [2] 21126-00-7.1GREC - CV01
Author: AutoCAD SHX Text
Date:
Color:

(IP)

Subject: IP
Page Label: [2] 21126-00-7.1GREC - CV01
Author: AutoCAD SHX Text
Date:
Color:

1

Subject: 1
Page Label: [4] 21126-00-7.2BMPDT - C7.3
Author: AutoCAD SHX Text
Date:
Color:

CHECK DAM

INLET PROTEC

Subject: CHECK DAM
Page Label: [2] 21126-00-7.1GREC - CV01
Author: AutoCAD SHX Text
Date:
Color:

(SF)

Subject: SF
Page Label: [2] 21126-00-7.1GREC - CV01
Author: AutoCAD SHX Text
Date:
Color:

(SF)

Subject: SF
Page Label: [2] 21126-00-7.1GREC - CV01
Author: AutoCAD SHX Text
Date:
Color:

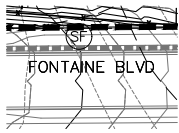
1

Subject: 1
Page Label: [2] 21126-00-7.1GREC - CV01
Author: AutoCAD SHX Text
Date:
Color:

DREXEL, BARRELL & CO.
Engineers & Surveyors
3 SOUTH 7TH STREET
COLORADO SPRING, COLORADO 80905
CONTACT: TIM D. MCCONNELL, P.E.
(719) 266-8897
BOULDER • COLORADO SPRINGS • GREELY

© Copyright 2017 The USA Partners, Inc. The document and the information contained herein may not be reproduced or transmitted in any form without the express written permission of The USA Partners, Inc. Intellectual property, trademarks or other information contained herein are protected by copyright law.

Subject: BOULDER COLORADO SPRINGS GREELY
Page Label: [2] 21126-00-7.1GREC - CV01
Author: AutoCAD SHX Text
Date:
Color:



Subject: FONTAINE BLVD
Page Label: [2] 21126-00-7.1GREC - CV01
Author: AutoCAD SHX Text
Date:
Color:



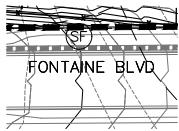
Subject: CLARION DR
Page Label: [2] 21126-00-7.1GREC - CV01
Author: AutoCAD SHX Text
Date:
Color:

EC-1 COVER SHEET
 EC-2 GRADING AND EF
 EC-3 BMP DETAILS
 EC-4 BMP DETAILS

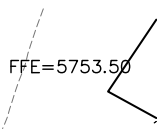
Subject: EC-4 BMP DETAILS
Page Label: [2] 21126-00-7.1GREC - CV01
Author: AutoCAD SHX Text
Date:
Color:



Subject: SWALE
Page Label: [2] 21126-00-7.1GREC - CV01
Author: AutoCAD SHX Text
Date:
Color:



Subject: FONTAINE BLVD
Page Label: [2] 21126-00-7.1GREC - CV01
Author: AutoCAD SHX Text
Date:
Color:



Subject: FFE=5753.50
Page Label: [2] 21126-00-7.1GREC - CV01
Author: AutoCAD SHX Text
Date:
Color:

CONCRETE WASHOUT AREA
 STOCKPILE PROTECTION
 PERMANENT SEEDING

Subject: STOCKPILE PROTECTION
Page Label: [2] 21126-00-7.1GREC - CV01
Author: AutoCAD SHX Text
Date:
Color:



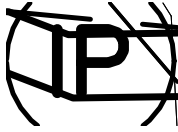
Subject: PS
Page Label: [2] 21126-00-7.1GREC - CV01
Author: AutoCAD SHX Text
Date:
Color:



Subject: IP
Page Label: [2] 21126-00-7.1GREC - CV01
Author: AutoCAD SHX Text
Date:
Color:

21126-00-7.1GREC

Subject: 21126-00-7.1GREC
Page Label: [2] 21126-00-7.1GREC - CV01
Author: AutoCAD SHX Text
Date:
Color:



Subject: IP
Page Label: [2] 21126-00-7.1GREC - CV01
Author: AutoCAD SHX Text
Date:
Color:



Subject: CUT FILL
Page Label: [2] 21126-00-7.1GREC - CV01
Author: AutoCAD SHX Text
Date:
Color:



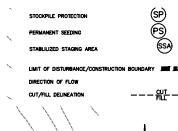
Subject: IP
Page Label: [2] 21126-00-7.1GREC - CV01
Author: AutoCAD SHX Text
Date:
Color:



Subject: IP
Page Label: [2] 21126-00-7.1GREC - CV01
Author: AutoCAD SHX Text
Date:
Color:

21126-00-7.2BMPDT

Subject: 21126-00-7.2BMPDT
Page Label: [4] 21126-00-7.2BMPDT - C7.3
Author: AutoCAD SHX Text
Date:
Color:



Subject: LIMIT OF DISTURBANCE/CONSTRUCTION BOUNDARY
Page Label: [2] 21126-00-7.1GREC - CV01
Author: AutoCAD SHX Text
Date:
Color:

NOTE
IN PROVISIONS WITH THIS SECTION ALL THESE CONTROL MEASURES SHALL BE MAINTAINED FOR A PERIOD OF 90 DAYS BY THE CONTRACTOR UNTIL THE COMPLETION OF THE FINAL STABILIZATION OF THE DISTURBED AREAS. THE CONTRACTOR SHALL BE RESPONSIBLE FOR THE PROTECTION OF THE EXISTING STRUCTURES AND UTILITIES.
DESIGN ENGINEER'S STATEMENT
I HAVE REVIEWED THE PLAN AND SPECIFICATIONS FOR THE EROSION CONTROL MEASURES AND HAVE DETERMINED THAT THEY ARE IN ACCORDANCE WITH THE REQUIREMENTS OF THE PERMITS AND THE EROSION CONTROL PLAN. I ACCEPT RESPONSIBILITY FOR THE DESIGN OF THE EROSION CONTROL MEASURES AND THE ACCURACY OF THE INFORMATION PROVIDED TO THE CONTRACTOR.

Subject: %%UDESIGN ENGINEER'S STATEMENT
Page Label: [2] 21126-00-7.1GREC - CV01
Author: AutoCAD SHX Text
Date:
Color:

EROSION CONTROL DETAILS

Subject: EROSION CONTROL
Page Label: [4] 21126-00-7.2BMPDT - C7.3
Author: AutoCAD SHX Text
Date:
Color:



Subject:
Page Label: [2] 21126-00-7.1GREC - CV01
Author: AutoCAD SHX Text
Date:
Color:

SF



Subject:
Page Label: [2] 21126-00-7.1GREC - CV01
Author: AutoCAD SHX Text
Date:
Color:

FFE=5753.50

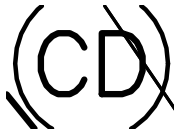
PROPOSED SITE

EX. MANHOLE .

EX. LIGHT POLE

Subject:
Page Label: [2] 21126-00-7.1GREC - CV01
Author: AutoCAD SHX Text
Date:
Color:

EX. MANHOLE



Subject:
Page Label: [2] 21126-00-7.1GREC - CV01
Author: AutoCAD SHX Text
Date:
Color:

CD



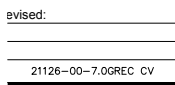
Subject:
Page Label: [2] 21126-00-7.1GREC - CV01
Author: AutoCAD SHX Text
Date:
Color:

IP



Subject:
Page Label: [2] 21126-00-7.1GREC - CV01
Author: AutoCAD SHX Text
Date:
Color:

SSA



Subject:
Page Label: [2] 21126-00-7.1GREC - CV01
Author: AutoCAD SHX Text
Date:
Color:

21126-00-7.0GREC CV



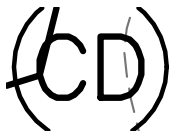
Subject:
Page Label: [2] 21126-00-7.1GREC - CV01
Author: AutoCAD SHX Text
Date:
Color:

SWALE

**SION CONT
 DETAILS**

Subject:
Page Label: [4] 21126-00-7.2BMPDT - C7.3
Author: AutoCAD SHX Text
Date:
Color:

DETAILS



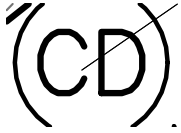
Subject:
Page Label: [2] 21126-00-7.1GREC - CV01
Author: AutoCAD SHX Text
Date:
Color:

CD



Subject:
Page Label: [2] 21126-00-7.1GREC - CV01
Author: AutoCAD SHX Text
Date:
Color:

SF



Subject:
Page Label: [2] 21126-00-7.1GREC - CV01
Author: AutoCAD SHX Text
Date:
Color:

CD



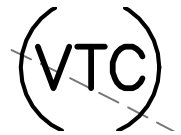
Subject:
Page Label: [2] 21126-00-7.1GREC - CV01
Author: AutoCAD SHX Text
Date:
Color:

FILL CUT



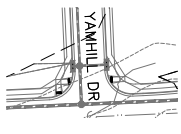
Subject:
Page Label: [3] 21126-00-7.2BMPDT - C7.2
Author: AutoCAD SHX Text
Date:
Color:

The LKA Partners, Inc. Unauthorized copying, disclosure or



Subject:
Page Label: [2] 21126-00-7.1GREC - CV01
Author: AutoCAD SHX Text
Date:
Color:

VTC



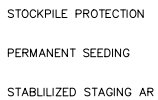
Subject:
Page Label: [2] 21126-00-7.1GREC - CV01
Author: AutoCAD SHX Text
Date:
Color:

YAMHILL DR



Subject:
Page Label: [2] 21126-00-7.1GREC - CV01
Author: AutoCAD SHX Text
Date:
Color:

CWA



Subject:
Page Label: [2] 21126-00-7.1GREC - CV01
Author: AutoCAD SHX Text
Date:
Color:

PERMANENT SEEDING



Subject:
Page Label: [2] 21126-00-7.1GREC - CV01
Author: AutoCAD SHX Text
Date:
Color:

SF

SILT FENCING
 CONCRETE WASHOUT AREA
 STOCKPILE PROTECTION

Subject:
Page Label: [2] 21126-00-7.1GREC - CV01
Author: AutoCAD SHX Text
Date:
Color:

CONCRETE WASHOUT AREA

1

Subject:
Page Label: [3] 21126-00-7.2BMPDT - C7.2
Author: AutoCAD SHX Text
Date:
Color:

1



Subject:
Page Label: [2] 21126-00-7.1GREC - CV01
Author: AutoCAD SHX Text
Date:
Color:

CD



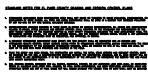
Subject:
Page Label: [2] 21126-00-7.1GREC - CV01
Author: AutoCAD SHX Text
Date:
Color:

IP



Subject:
Page Label: [2] 21126-00-7.1GREC - CV01
Author: AutoCAD SHX Text
Date:
Color:

IP



Subject:
Page Label: [2] 21126-00-7.1GREC - CV01
Author: AutoCAD SHX Text
Date:
Color:

%%UNSTANDARD NOTES FOR EL PASO
 COUNTY GRADING AND EROSION CONTROL
 PLANS



Subject:
Page Label: [2] 21126-00-7.1GREC - CV01
Author: AutoCAD SHX Text
Date:
Color:

SWALE