

Include a table of how many trees are required and provided per the PUD guidelines that were attached in another comment.

PUD calls for 35' setback depth for landscaping - show that.

LKA PARTNERS
 L.N.C.O.R.P.O.L.A.T.E.D.
 A Professional Corporation for Architecture and Planning
 430 North Tejon Street Suite 200
 Colorado Springs Colorado 80903
 Tele: 719.473.8446 Fax: 719.473.8448
 web: www.lkpartners.com



© Copyright 2018 The LKA Partners, Inc. This document and the information contained herein may not be reproduced or excerpted from without the express written permission of The LKA Partners, Inc. Unauthorized copying, disclosure or construction use are prohibited by copyright law.

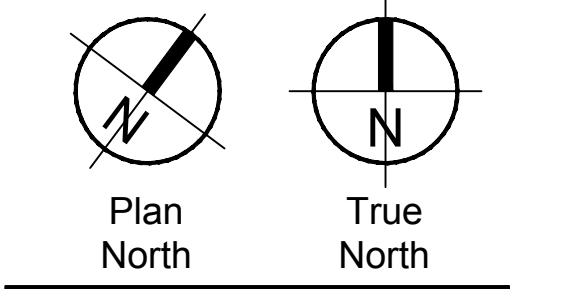
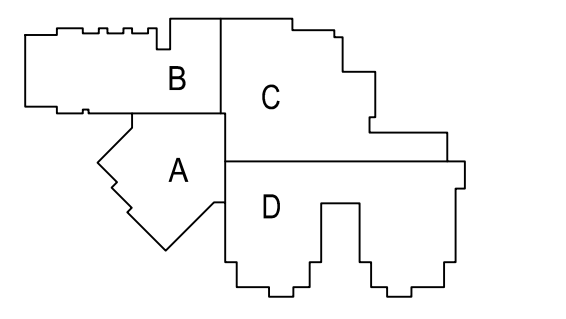
New Widefield PK-8 School
 11060 Fontaine Blvd., Widefield, CO
Widefield School District 3
 1820 Main Street
 Colorado Springs, CO 80911



Development Plan

Drawn: _____
 Checked: _____
 Issued: 15 May 2018
 Revised: _____

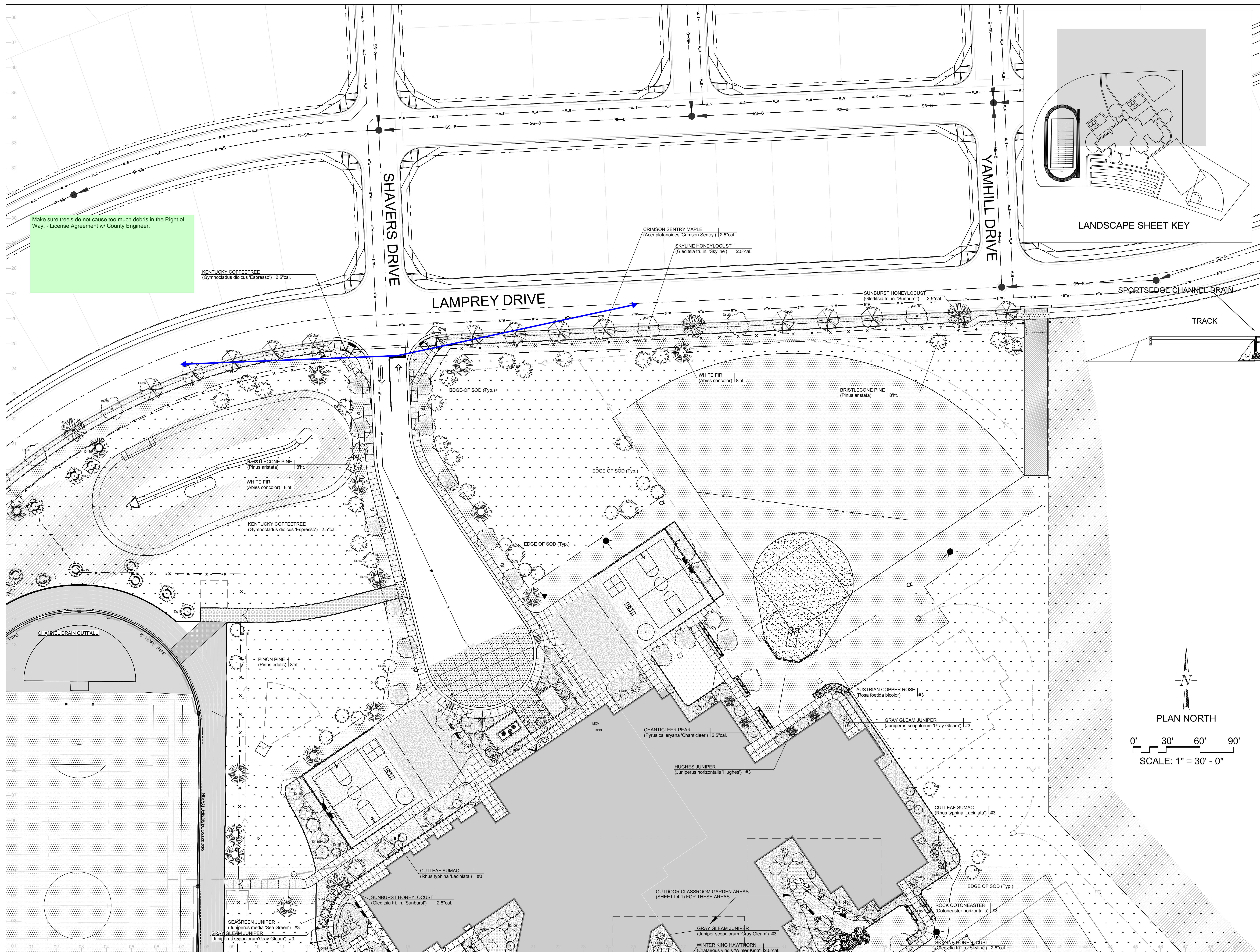
Area Key Plan



Landscape Plan

LS1.0

Project No. 17.001
 The LKA Partners Incorporated



L K A PART N E R S
 L.N.C.O.R.E.B.A.L.E.D.
 A Professional Corporation for Architecture and Planning
 430 North Tejon Street Suite 200
 Colorado Springs Colorado 80903
 Phone: 719.473.8446 Fax: 719.473.8448
 web: www.lkapartners.com



© Copyright 2018 The LKA Partners, Inc. This document and the information contained herein may not be reproduced or excerpted from without the express written permission of The LKA Partners, Inc. Unauthorized copying, disclosure or construction use are prohibited by copyright law.

New Widefield PK-8 School
 11060 Fontaine Blvd., Widefield, CO

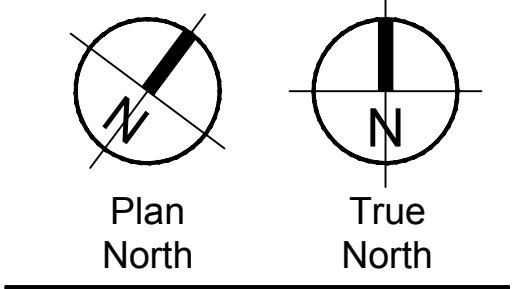
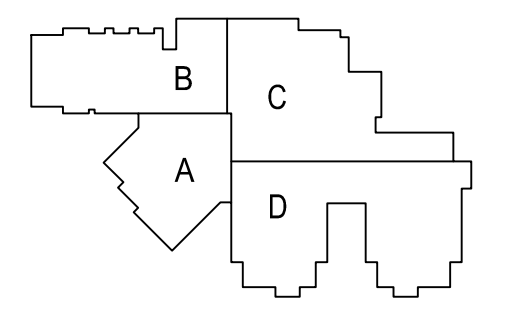
Widefield School District 3
 1820 Main Street
 Colorado Springs, CO 80911



Development Plan

Drawn: _____
 Checked: _____
 Issued: 15 May 2018
 Revised: _____

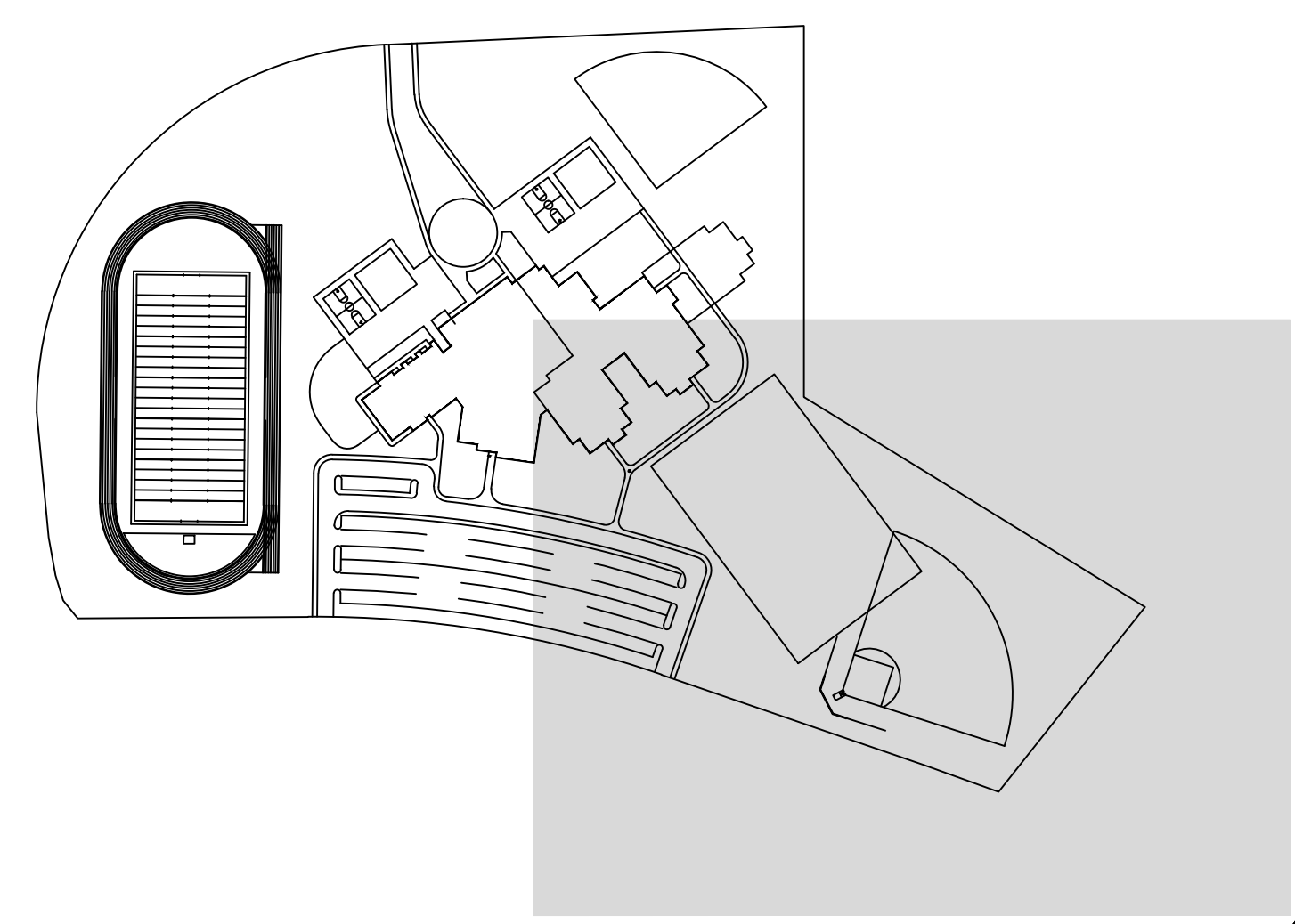
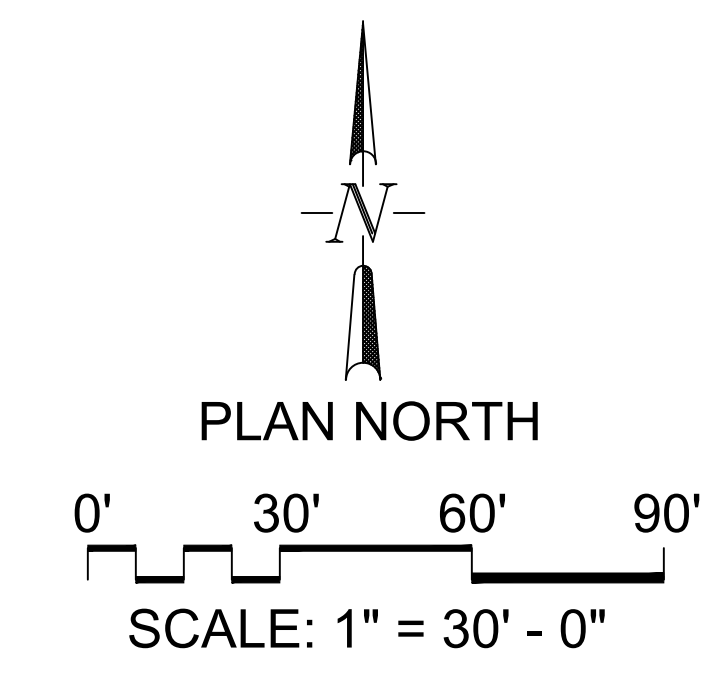
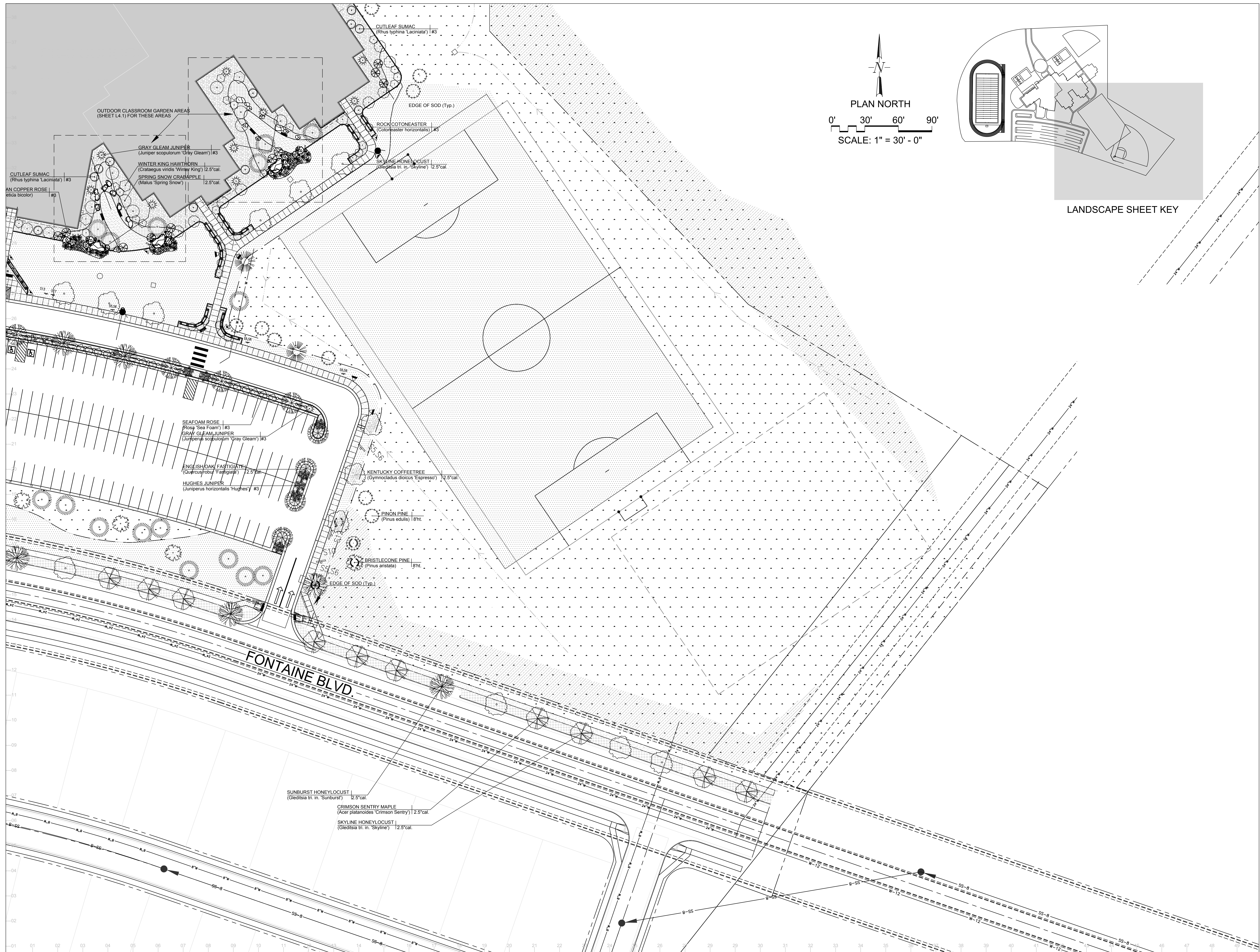
Area Key Plan



Landscape Plan

LS2.0

Project No. 17.001
 The LKA Partners Incorporated



L K A PART N E R S
 L.N.C.O.R.E.B.L.A.T.E.D.
 A Professional Corporation for Architecture and Planning
 430 North Tejon Street Suite 200
 Colorado Springs Colorado 80903
 Phone: 719.473.8446 Fax: 719.473.8448
 web: www.lkapartners.com



© Copyright 2018 The LKA Partners, Inc. This document and the information contained herein may not be reproduced or excerpted from without the express written permission of The LKA Partners, Inc. Unauthorized copying, disclosure or construction use are prohibited by copyright law.

New Widefield PK-8 School
 11060 Fontaine Blvd., Widefield, CO

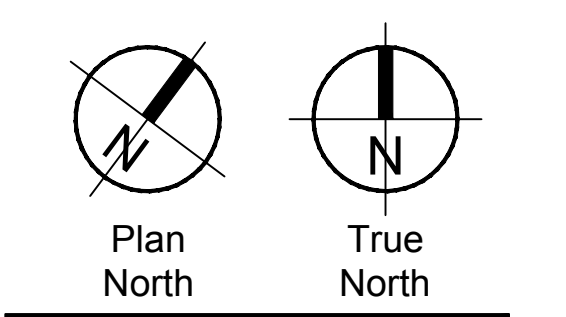
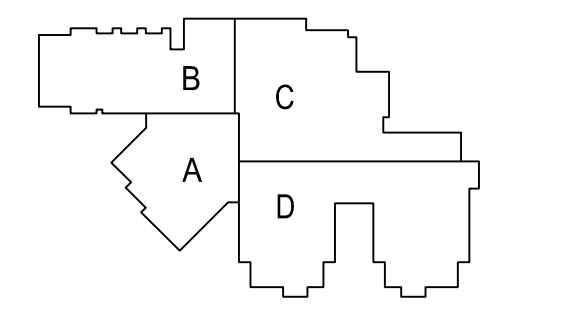
Widefield School District 3
 1820 Main Street
 Colorado Springs, CO 80911



Development Plan

Drawn: _____
 Checked: _____
 Issued: 15 May 2018
 Revised: _____

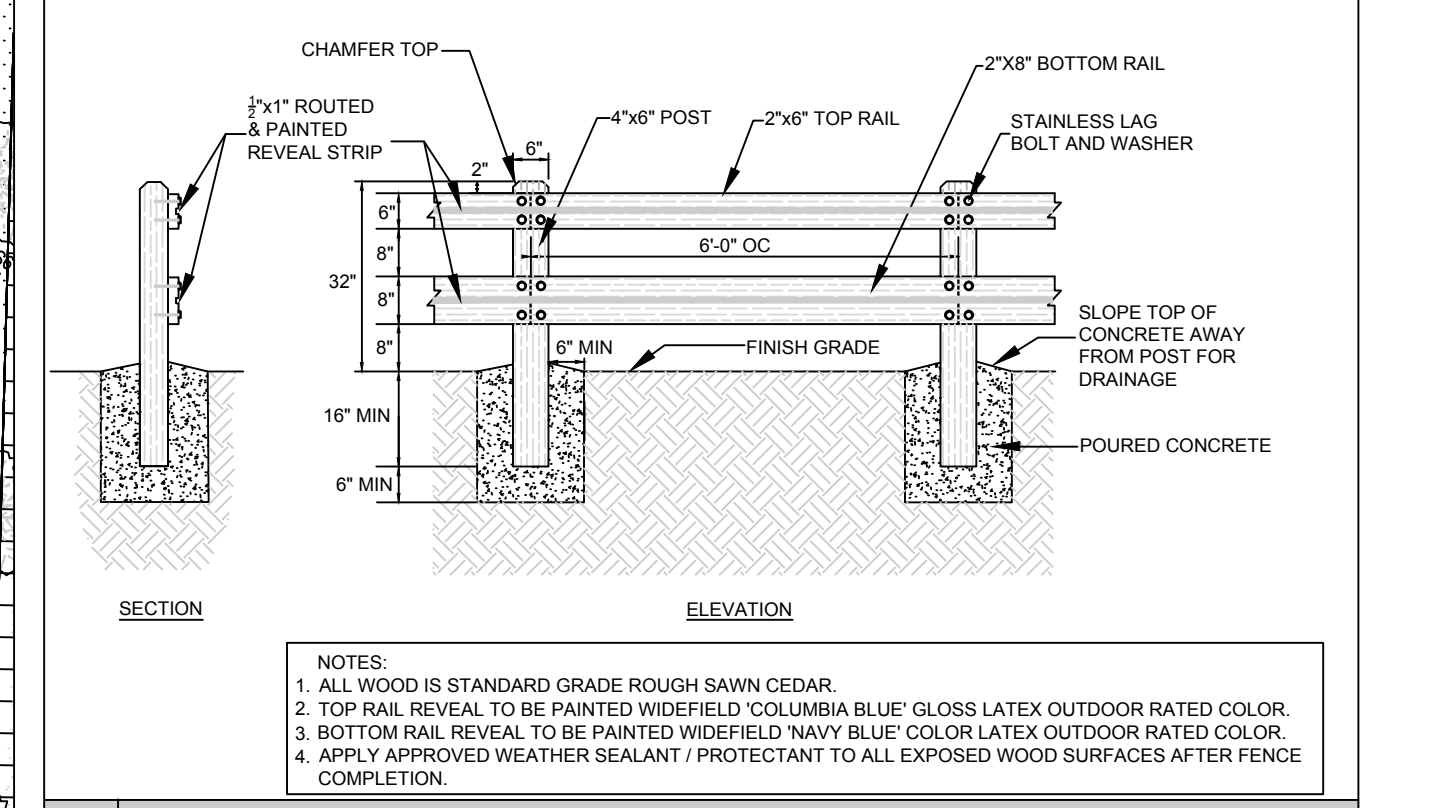
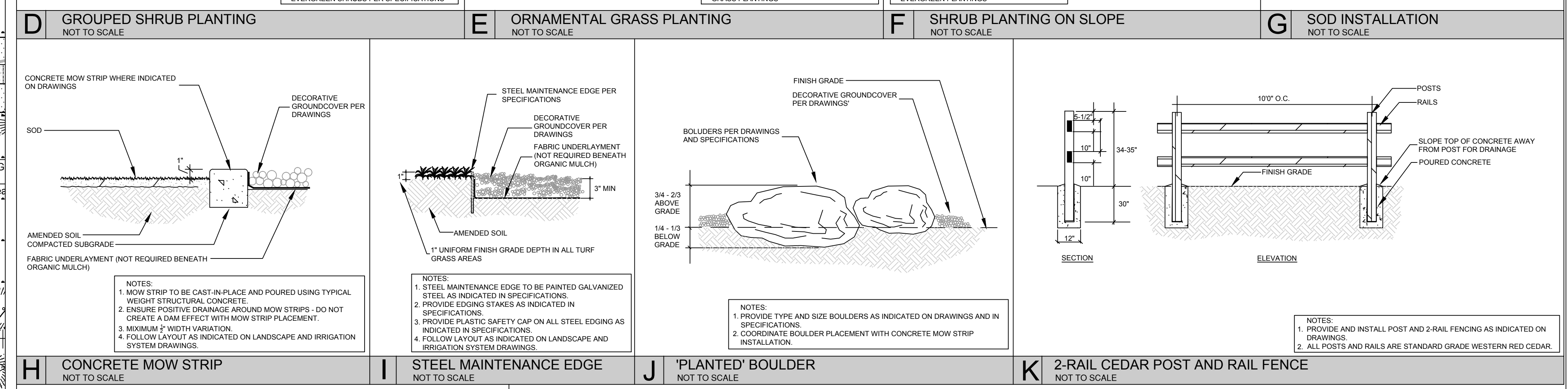
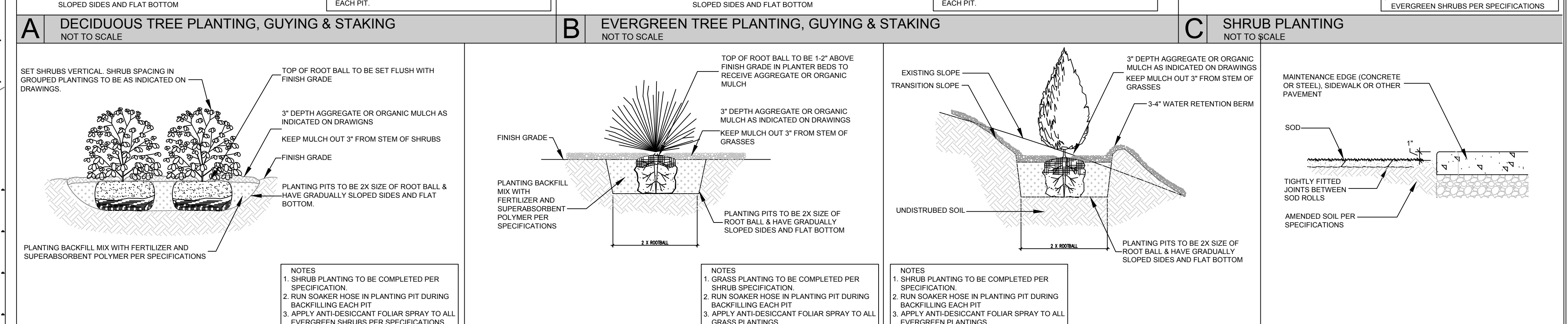
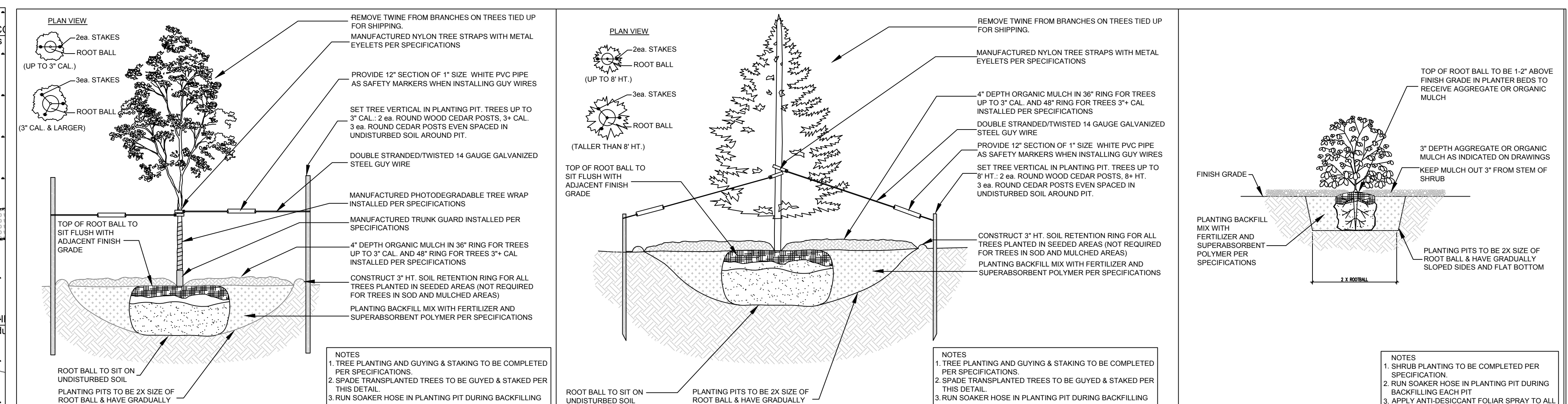
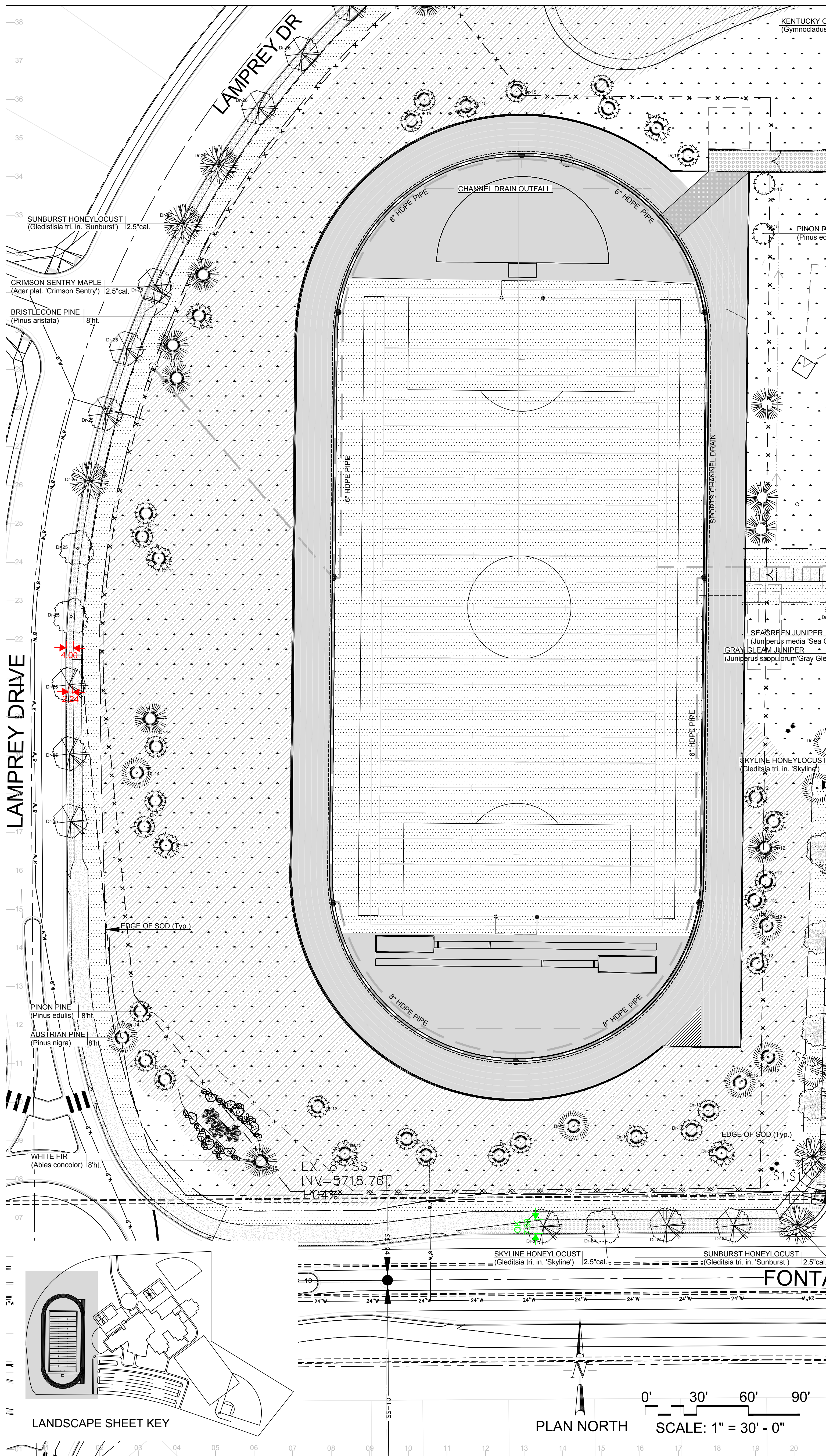
Area Key Plan



Landscape Plan

LS3.0

Project No. 17.001
 The LKA Partners Incorporated



L LOW CEDAR FENCE W/ ROUTED & PAINTED REVEAL
NOT TO SCALE

LANDSCAPE SCHEDULE: Planting:

TREES					
SYM.	QTY.	BOTANICAL/COMMON NAME	MATURE HT./WD.	PLANTING SIZE	NOTES
☉	22	CHANTICLEER BRADFORD PEAR (Pyrus calleryana 'Chanticleer')	20-30 15-20	2.5' cal.	B&B Nursery Grown. Size to meet or exceed AAN. min. size
☉	21	WHITE FIR (Abies concolor)	40-60 20-30	8' ht.	B&B Nursery Grown. Size to meet or exceed AAN. min. size
☉	39	AUSTRIAN PINE (Pinus nigra)	40-60 20-30	8' ht.	B&B Nursery Grown. Size to meet or exceed AAN. min. size
☉	24	KENTUCKY COFFEE TREE (Gymnocladus dioica 'Espresso')	50-60 40-50	2.5' cal.	B&B Nursery Grown. Size to meet or exceed AAN. min. size
☉	35	BRISTLECONE PINE (Pinus aristata)	20-30 15-20	8' ht.	B&B Nursery Grown. Size to meet or exceed AAN. min. size
☉	5	WINTER KING HAWTHORN (Crataegus viridis 'Winter King')	20-30 15-20	2.5' cal.	B&B Nursery Grown. Size to meet or exceed AAN. min. size
☉	36	SKYLINE HONEYLOCUST (Gleditsia triacanthos inermis 'Skyline')	40-50 30-40	2.5' cal.	B&B Nursery Grown. Size to meet or exceed AAN. min. size
☉	15	SUNBURST HONEYLOCUST (Gleditsia triacanthos inermis 'Sunburst')	40-50 30-40	2.5' cal.	B&B Nursery Grown. Size to meet or exceed AAN. min. size
☉	40	CRIMSON SENTRY MAPLE (Acer platanoides 'Crimson Sentry')	50-60 40-50	2.5' cal.	B&B Nursery Grown. Size to meet or exceed AAN. min. size
☉	11	SPRING SNOW CRABAPPLE (Malus 'Spring Snow')	20-30 15-20	2.5' cal.	B&B Nursery Grown. Size to meet or exceed AAN. min. size
☉	20	FASTIGIATE ENGLISH OAK (Quercus robur 'Fastigiata')	20-30 15-20	2.5' cal.	B&B Nursery Grown. Size to meet or exceed AAN. min. size
☉	55	PINON PINE (Pinus edulis)	20-25 15-20	8' ht.	B&B Nursery Grown. Size to meet or exceed AAN. min. size

SHRUBS					
SYM.	QTY.	BOTANICAL/COMMON NAME	MATURE HT./WD.	PLANTING SIZE	NOTES
☉	14	SEA GREEN JUNIPER (Juniperus media 'Sea Green')	5-6 6-8	#3	Container Grown. Size to meet or exceed AAN. min. size
☉	18	GRAY OLEAM JUNIPER (Juniperus scopulorum 'Gray Oleam')	12-15 4-6	#3	Container Grown. Size to meet or exceed AAN. min. size
☉	49	ROCK COTONEASTER (Cotoneaster horizontalis)	2-3 3-6	#3	Container Grown. Size to meet or exceed AAN. min. size
☉	16	CUTLEAF STAGHORN SUMAC (Rhus typhina 'Laciniata')	6-8 6-8	#3	Container Grown. Size to meet or exceed AAN. min. size
☉	16	AUSTRIAN COPPER ROSE (Rosa foetida bicolor)	6-10 6-8	#3	Container Grown. Size to meet or exceed AAN. min. size
☉	23	HUGHES JUNIPER (Juniperus horizontalis 'Hughes')	1-2 5-8	#3	Container Grown. Size to meet or exceed AAN. min. size
☉	35	RUSSIAN SAGE (Perovskia atrorubra)	3-4 3-4	#3	Container Grown. Size to meet or exceed AAN. min. size
☉	17	SEA FOAM ROSE (Rosa 'Sea Foam')	2-3 4-6	#3	Container Grown. Size to meet or exceed AAN. min. size

SYMBOL KEY:

SYMBOL	DESCRIPTION/REMARKS
[Pattern]	SOD (90-100% Irrigation Coverage); FESCUE/HTN KENTUCKY BLUEGRASS 4-WAY BLEND ON PREPARED SOIL.
[Pattern]	SEEDED TURF (60-70% Irrigation Coverage); NATIVE SEED BLEND EQUAL TO CARE FREE MIX (30% CHEWINGS FESCUE, 30% CREEPING RED FESCUE, 25% HARD FESCUE, 10% BLUE FESCUE) AT 6 LBS./1,000 SF RATE. AV SEEDS, INC., DENVER, CO (www.avseeds.com)
[Pattern]	STEEL MAINTENANCE EDGE; DuraLoc® OAE (Per Detail)
[Pattern]	CONCRETE MOW EDGE; 6"X8" (Per Detail)
[Pattern]	NO SYMBOL
[Pattern]	IDHAO CEDAR WOOD MULCH: UNIFORMLY PLACED TO A 4" DEPTH AROUND ALL TREE ROOT BALLS IN TURF AREAS ONLY [Equal to that supplied by Pioneer Sand and Gravel, Colorado Springs, CO]
[Pattern]	ORGANIC MULCH TYPE 'A': 'DECO SHRED' BARK MULCH, PLACED TO A UNIFORM 3" DEPTH ON FABRIC UNDERLAYMENT [Equal to that supplied by Pioneer Sand and Gravel, Colorado Springs, CO]
[Pattern]	AGGREGATE 'A': 1 1/2" TO 3" SIZE WHOLE WASHED WHITE RIVER ROCK PLACED TO A UNIFORM DEPTH OF 3" ON FABRIC UNDERLAYMENT. [Equal to that supplied by Pioneer Sand and Gravel, Colorado Springs, CO]
[Pattern]	AGGREGATE 'B': 4-6" SIZE WHOLE WASHED WHITE RIVER ROCK PLACED TO A UNIFORM DEPTH OF 3" ON FABRIC UNDERLAYMENT. [Equal to that supplied by Pioneer Sand and Gravel, Colorado Springs, CO]
[Pattern]	AGGREGATE 'C': 3/8" MINUS GRAY BREEZE PLACED TO A UNIFORM DEPTH OF 3" ON FABRIC UNDERLAYMENT. [Equal to that supplied by Pioneer Sand and Gravel, Colorado Springs, CO]
[Pattern]	'PLANTED' BOULDERS Type 'A' (Outlying site areas): 'Cottowood Grey' whole washed river boulders, 3-4' width, set in grade w/ 18-24" ht. exposed above grade (Per Detail).
[Pattern]	'PLANTED' BOULDERS Type 'B' (Outdoor Classroom Garden '1' area): Moss & lichen covered boulders, 3' width, set w/ 18-24" ht. exposed above grade (Per Detail).
[Pattern]	'PLANTED' BOULDERS Type 'C' (Outdoor Classroom Garden '2' area): Sandstone boulders, 3-4' width, set in grade w/ 18-24" ht. exposed above grade (Per Detail).
[Pattern]	'All' boulders may be selected and/or approved for use by Project Architect at Contractor's source prior to delivery and installation at site.
[Pattern]	LOW CEDAR PEDESTRIAN SAFETY FENCE (Per Detail)
[Pattern]	2-RAIL POST AND RAIL FENCE (Per Detail)
[Pattern]	EROSION CONTROL BLANKET; (All slopes 4:1 and greater) (Per Specifications)

LANDSCAPE NOTES:

- REFER TO SPECIFICATION SECTION 32-94-00: LANDSCAPE ACCESSORIES FOR REQUIRED INSTALLATION AND WORKMANSHIP STANDARDS FOR NEW LANDSCAPING. IN THE EVENT OF A CONFLICT IN REQUIREMENTS THE MOST STRINGENT INTERPRETATION WILL PREVAIL.
- DRAWINGS ARE DIAGRAMMATIC; PRECISE PLACEMENT OF LANDSCAPE ACCESSORIES MAY NOT BE POSSIBLE AS INDICATED. CONSULT PROJECT LANDSCAPE ARCHITECT PRIOR TO MAKING RANDOM FIELD CHANGES WHICH MAY ALTER DESIGN INTENT.
- QUANTITIES ARE PROVIDED FOR REFERENCE ONLY; VERIFY ALL QUANTITIES PRIOR TO SUBMITTING COST PROPOSAL. IN THE EVENT OF A CONFLICT BETWEEN SCHEDULED, IMPLIED, OR EXPRESSED QUANTITIES, QUANTITIES WHICH CAN BE DETERMINED GRAPHICALLY FROM THE DRAWINGS WILL PREVAIL IN ANY CASE.
- THE CONTRACTOR IS RESPONSIBLE FOR INSPECTION AND VERIFICATION OF ALL FIELD CONDITIONS AND RESOLVING CONFLICTS PERTAINING TO DIMENSIONS, LAYOUT, ETC., WHICH MAY AFFECT THE LANDSCAPE INSTALLATION. MOBILIZING SHALL BE CONSTRUED AS ACCEPTANCE OF CONDITIONS.
- COORDINATE ALL WORK INDICATED ON THESE DRAWINGS WITH WORK OF OTHER TRADES.
- THE PROJECT LANDSCAPE ARCHITECT RESERVES THE RIGHT TO CONSIDER AND APPROVE ALTERNATE INSTALLATIONS AT ANY TIME WHICH IN THE LANDSCAPE ARCHITECT'S OPINION MAXIMIZES THE CONSTRUCTION BUDGET AND MAINTAINS DESIGN INTENT.
- PROVIDE A 3 FOOT CLEAR SPACE AROUND THE CIRCUMFERENCE AROUND ALL FIRE HYDRANTS AND LIGHTING STANDARDS.
- CONTRACTOR TO UTILIZE STOCKPILED TOPSOIL FROM GRADING OPERATION AS MAY BE AVAILABLE. IF THE AMOUNT OF TOPSOIL NEEDED TO COMPLETE FINAL GRADING IS NOT AVAILABLE, THE CONTRACTOR SHALL IMPORT THE AMOUNT OF SOIL NEEDED.
- CONTRACTOR SHALL ENSURE THAT PROPER IRRIGATION WITH THE IRRIGATION SYSTEM IS CAPABLE OF EXTENDING AMOUNTS OF WATER REQUIRED TO ESTABLISH AND SUSTAIN PLANT GROWTH AT THE TIME OF INSTALLATION.
- ALL LANDSCAPE AND IRRIGATION MAINTENANCE SHALL BE COMMENCED BY THE OWNER UPON COMPLETION AND FINAL ACCEPTANCE OF ALL LANDSCAPE AND IRRIGATION SYSTEM INSTALLATIONS.
- SOIL AMENDMENT AND FINAL GRADING FOR ALL SOD AND SEEDED TURF AREAS TO BE PROVIDED IN ACCORDANCE WITH SPECIFICATIONS.
- AN AUTOMATIC UNDERGROUND IRRIGATION SYSTEM IS TO BE PROVIDED AND INSTALLED IN ACCORDANCE WITH THE IRRIGATION SYSTEM DRAWING AND SPECIFICATIONS:
 - LANDSCAPE SETBACK AREAS ALONG ROAD FRONTS; IN-LINE DRIP EMITTER RINGS FOR ALL TREES
 - NEW SODDED TURF INTERIOR LANDSCAPE AREAS; 20' & LARGER AREAS ROTOR SPRINKLERS, AND POP-UP SPRAY SPRINKLERS FOR AREAS UNDER 20'
 - NEW SEEDED TURF AREAS; ROTOR SPRINKLERS
 - SHRUBS AND TREES; IN-LINE DRIP EMITTER RINGS FOR ALL TREES, EMITTERS FOR ALL SHRUBS
- MAINTENANCE EDGING AND MOW STRIPS TO BE INSTALLED TO SEPARATE ALL ORGANIC AND AGGREGATE MULCHES FROM ADJACENT SOD AND SEEDED TURF AREAS. INSTALL EDGING AND MOW STRIPS AS INDICATED ON DRAWINGS.
- ALL PLANT MATERIAL TO BE INSTALLED PER DETAILS AND SPECIFICATIONS. GUY AND STAKE ALL DECIDUOUS AND EVERGREEN TREES PER DETAILS. PROVIDE ORGANIC MULCH RINGS IN RETENTION BASINS AROUND ALL TREES PLANTED IN SOD AND SEEDED AREAS (MULCH RINGS ARE NOT REQUIRED FOR TREES PLANTED IN AGGREGATE MULCH AREAS).
- PLANT QUANTITIES AND SIZES INDICATED ARE THE MINIMUM TO SATISFY LANDSCAPE REQUIREMENTS; NO SUBSTITUTIONS ARE PERMITTED WITHOUT PRIOR APPROVAL OF THE MUNICIPAL REVIEWING AGENCY.
- PROVIDE AND INSTALL PLANTING BACKFILL, SUPERABSORBENT POLYMER, FERTILIZER, TREE WRAP, TRUNK PROTECTORS, AND ANTI-DESICCANT SPRAY (FOR EVERGREENS) AS REQUIRED ON THE DRAWINGS IN THE SPECIFICATIONS. PROVISION OF DELIVERY AND SALES TICKETS FOR ALL REQUIRED INCIDENTAL ITEMS IS A SUBMITTAL REQUIREMENT FOR FINAL ACCEPTANCE.

LKA PARTNERS
INCORPORATED
A Professional Corporation for Architecture and Planning

430 North Tejon Street Suite 200
Colorado Springs, Colorado 80903
Tel: 719.473.9446 Fax: 719.473.9448
www.lkpartners.com

Widefield School District 3
1820 Main Street
Colorado Springs, CO 80911

New Widefield PK-8 School
11060 Fontaine Blvd., Widefield, CO

Widefield School District 3
1820 Main Street
Colorado Springs, CO 80911

WIDEFIELD SCHOOL DISTRICT 3
PRIDE. TRADITION. INNOVATION.

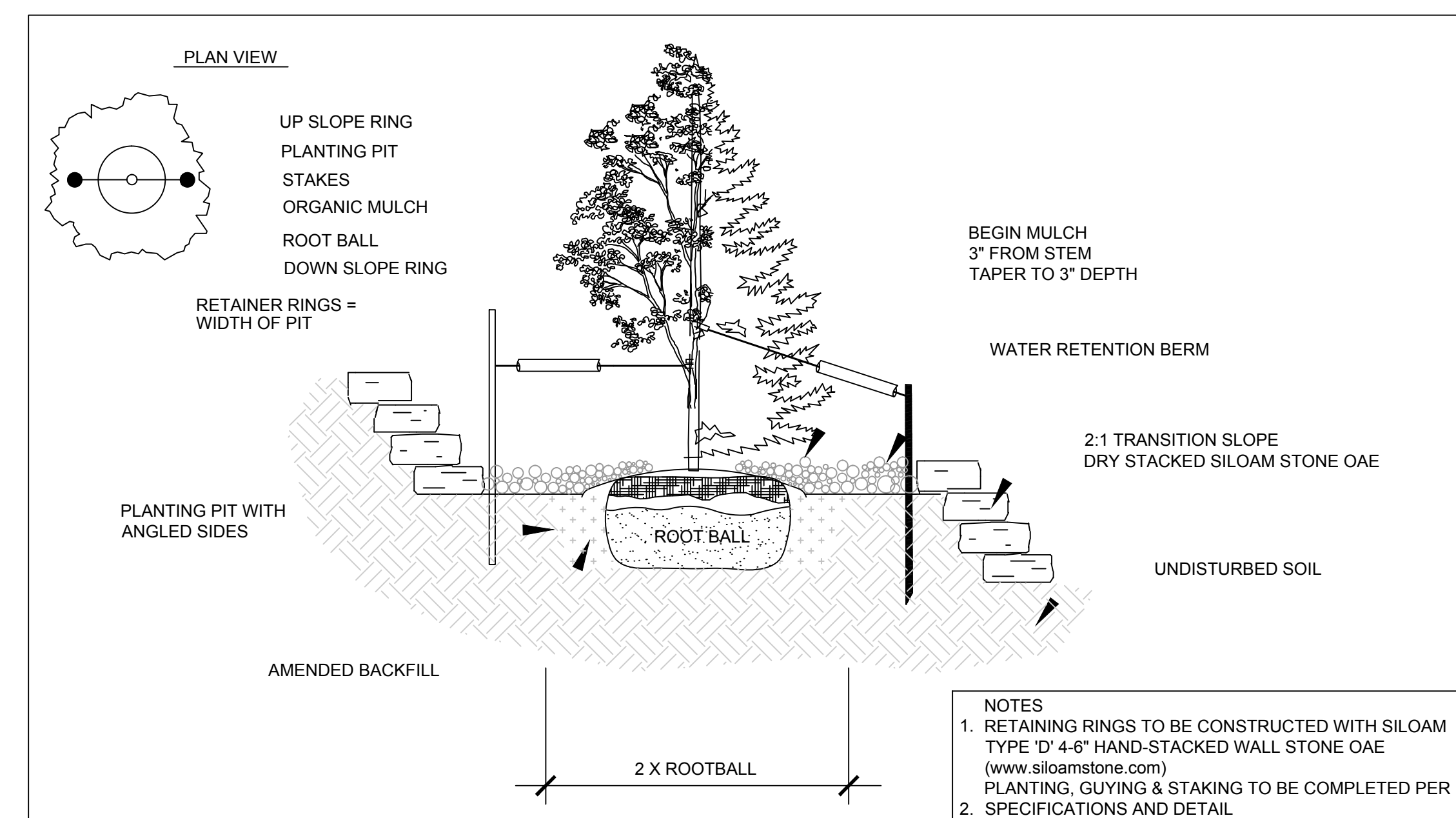
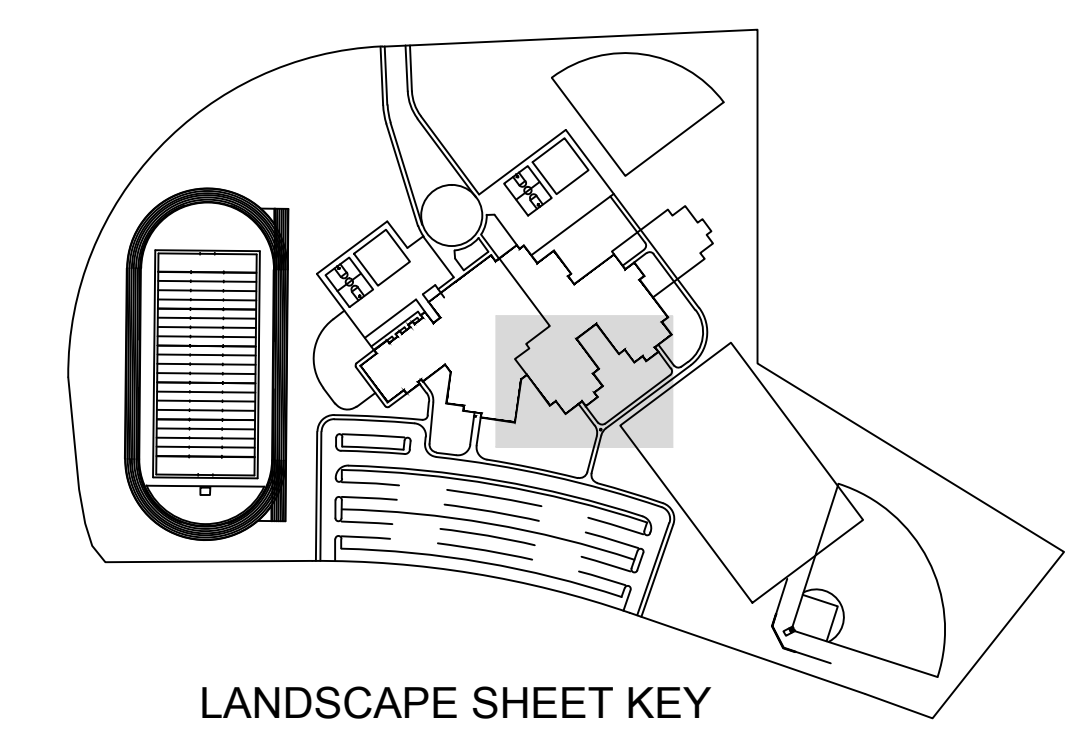
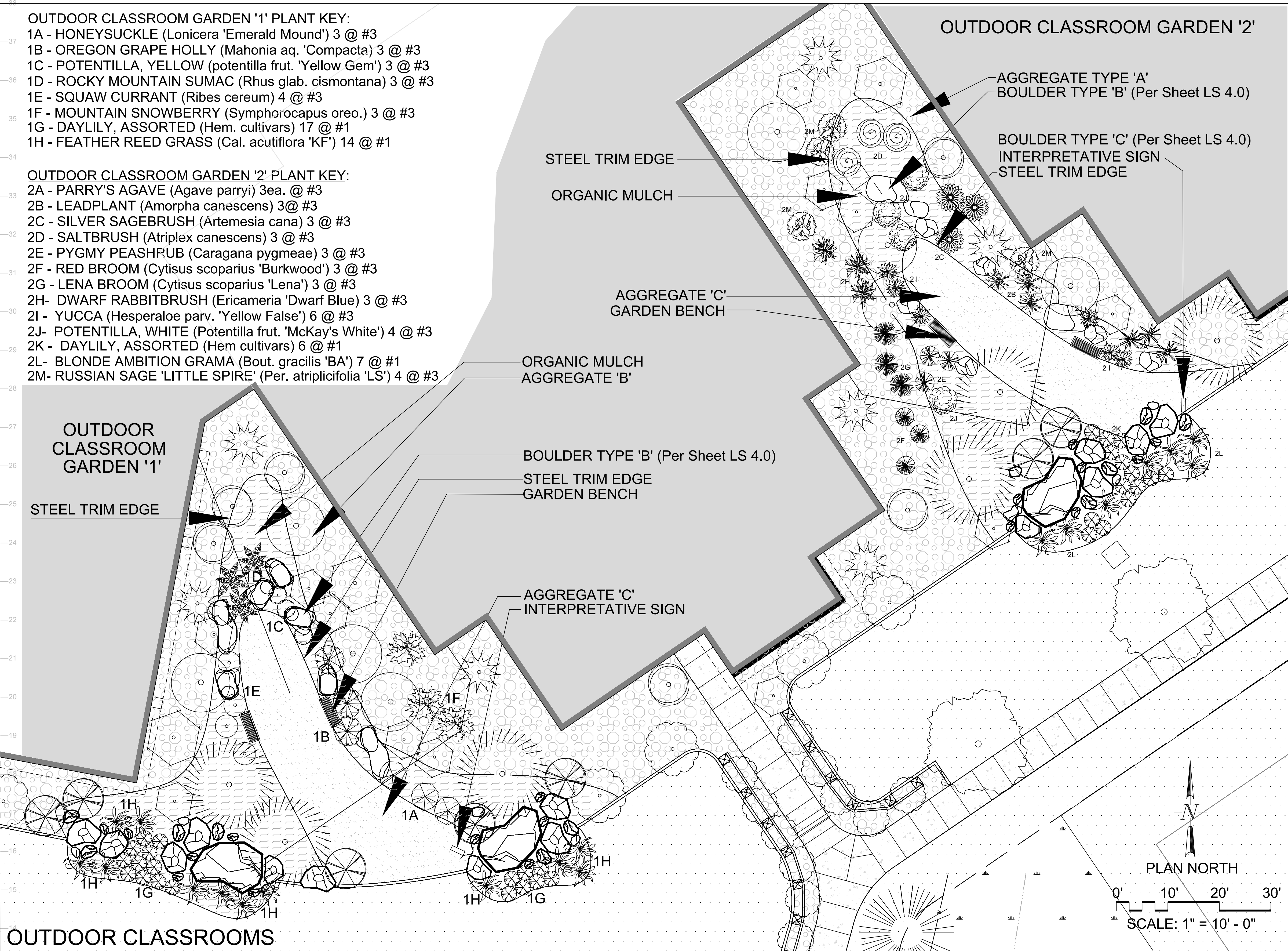
Development Plan

Area Key Plan

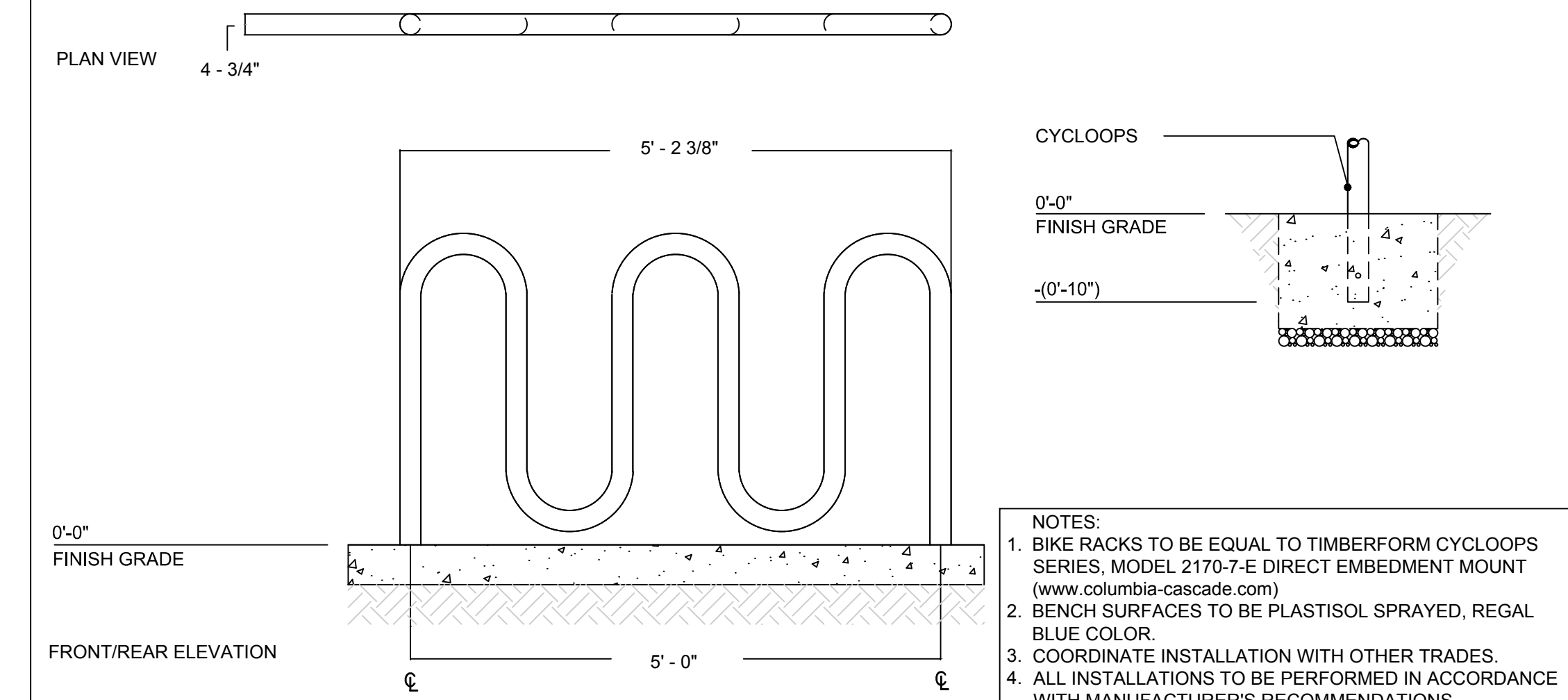
Landscape Plan and Details

LS4.0

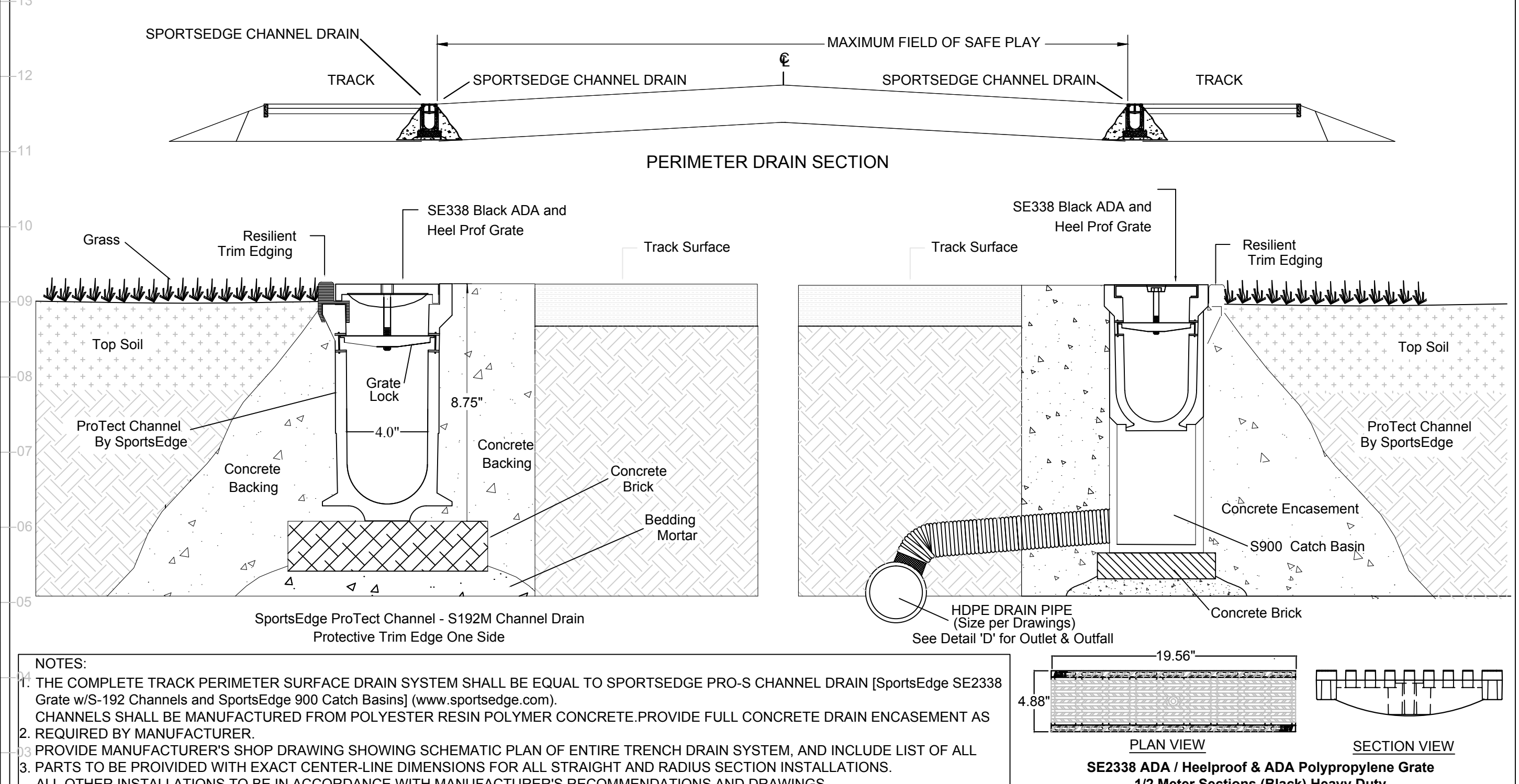
Project No. 17 001
The LKA Partners Incorporated



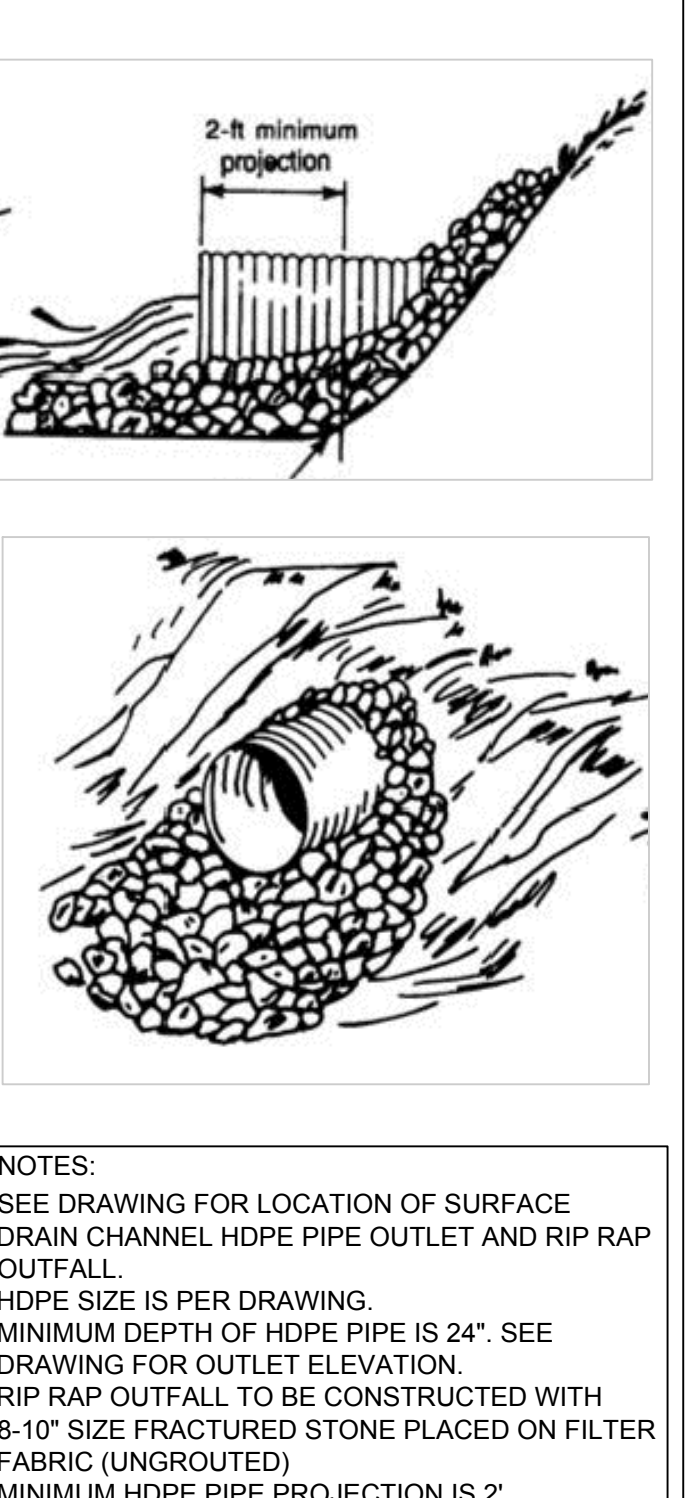
A ROCK RETAINING RINGS FOR TREES ON SLOPE
NOT TO SCALE



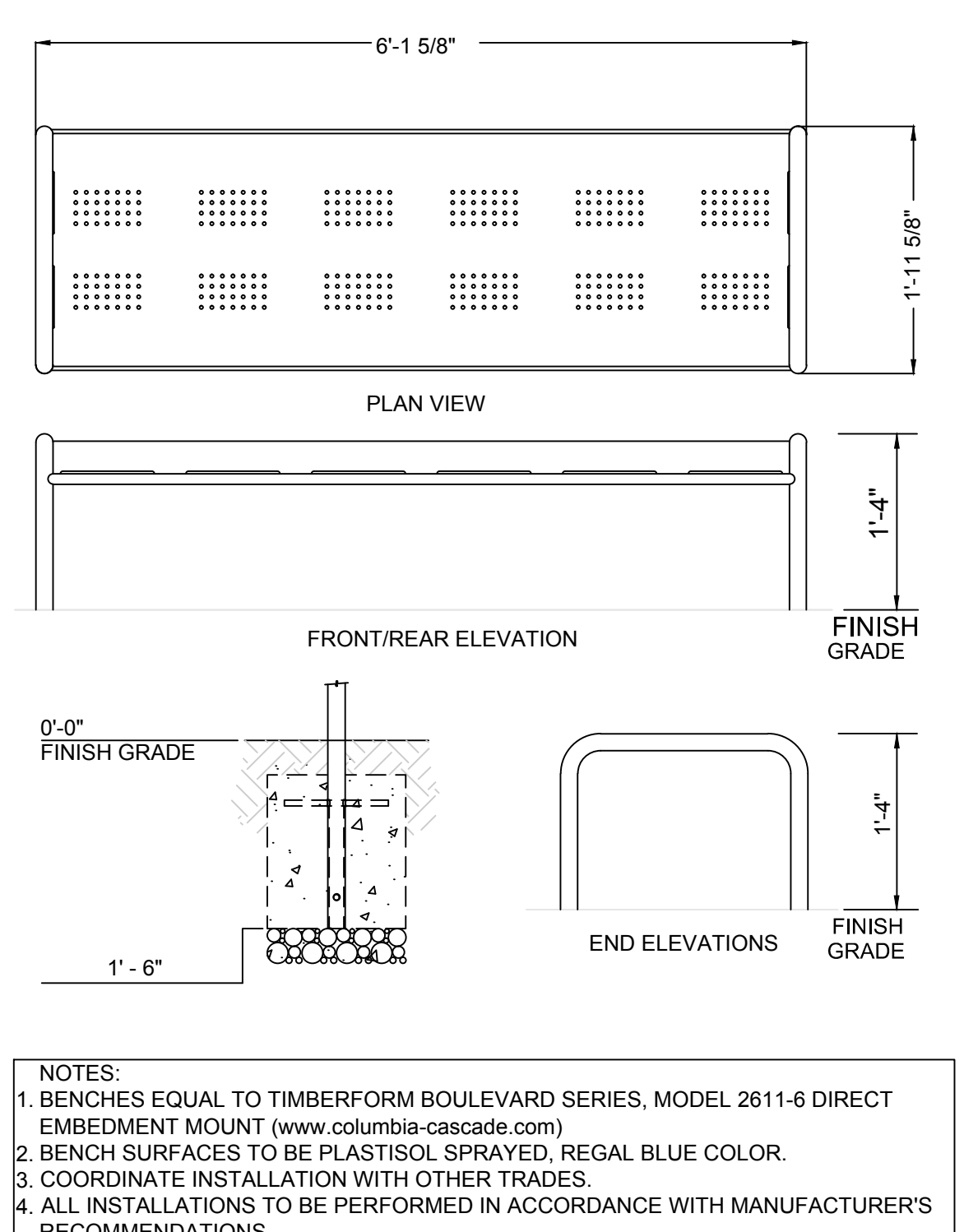
B CYCLOOPS BICYCLE RACKS
NOT TO SCALE



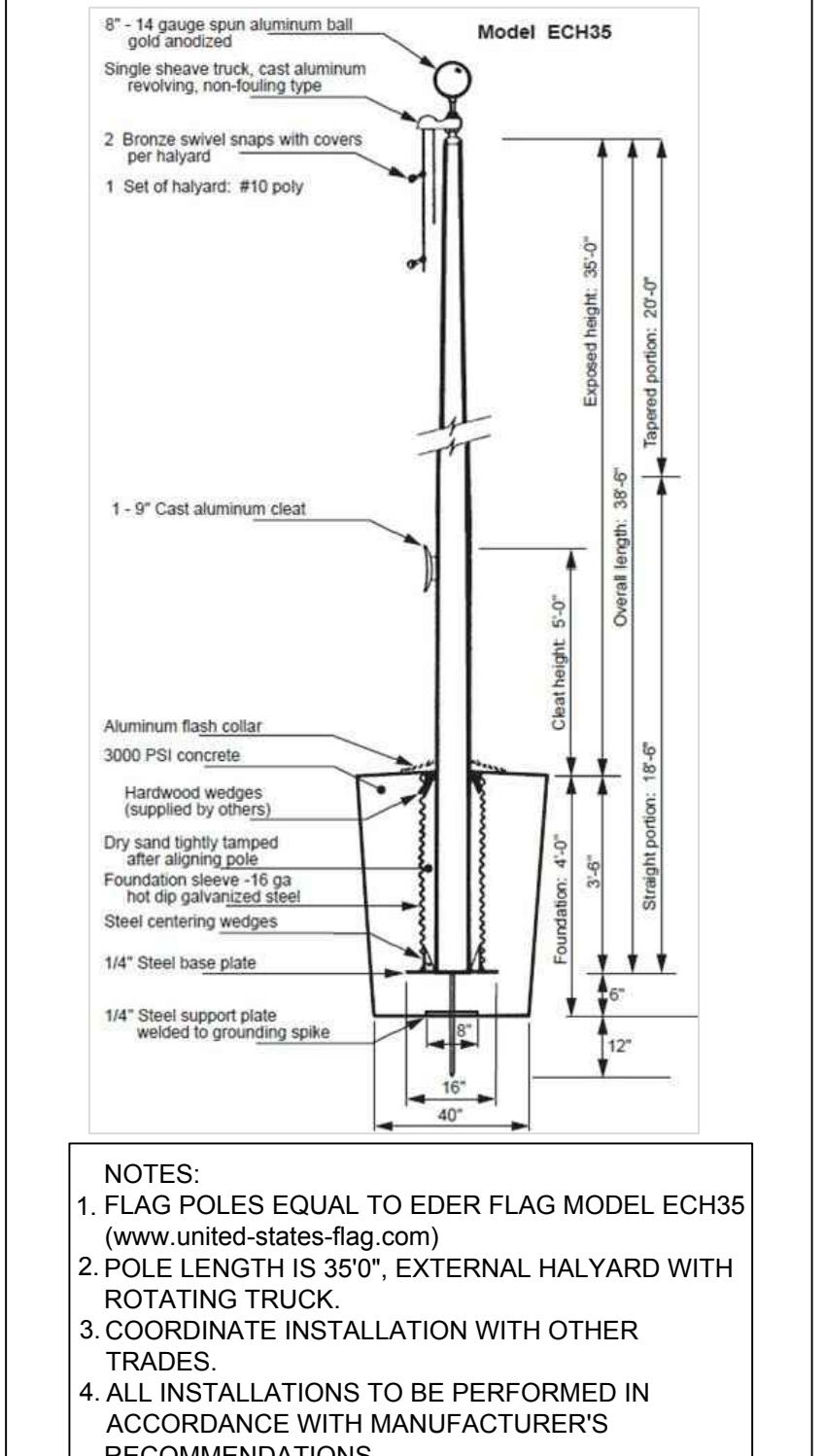
C TRACK & FIELD SURFACE PERIMETER DRAIN CHANNEL
NOT TO SCALE



D HDPE OUTLET
NOT TO SCALE



E BENCHES
NOT TO SCALE



F FLAG POLES
NOT TO SCALE

LKA PARTNERS
 L.N.C.O.R.E.O.B.A.T.E.D.
 A Professional Corporation for Architecture and Planning
 430 North Tejon Street Suite 200
 Colorado Springs Colorado 80903
 tele: 719.473.8446 fax: 719.473.8448
 web: www.lkpartners.com



© Copyright 2018 The LKA Partners, Inc. This document and the information contained herein may not be reproduced or excerpted from without the express written permission of The LKA Partners, Inc. Unauthorized copying, disclosure or construction use are prohibited by copyright law.

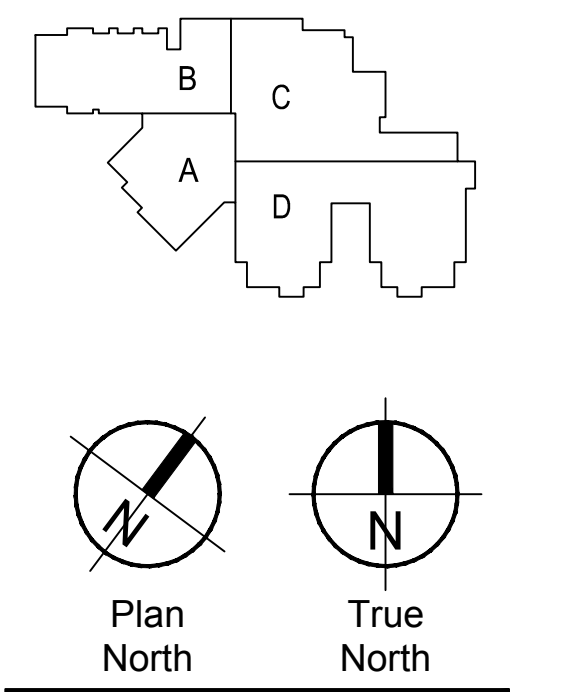
New Widefield PK-8 School
 11060 Fontaine Blvd., Widefield, CO
 Widefield School District 3
 1820 Main Street
 Colorado Springs, CO 80911



Development Plan

Drawn: _____
 Checked: _____
 Issued: 15 May 2018
 Revised: _____

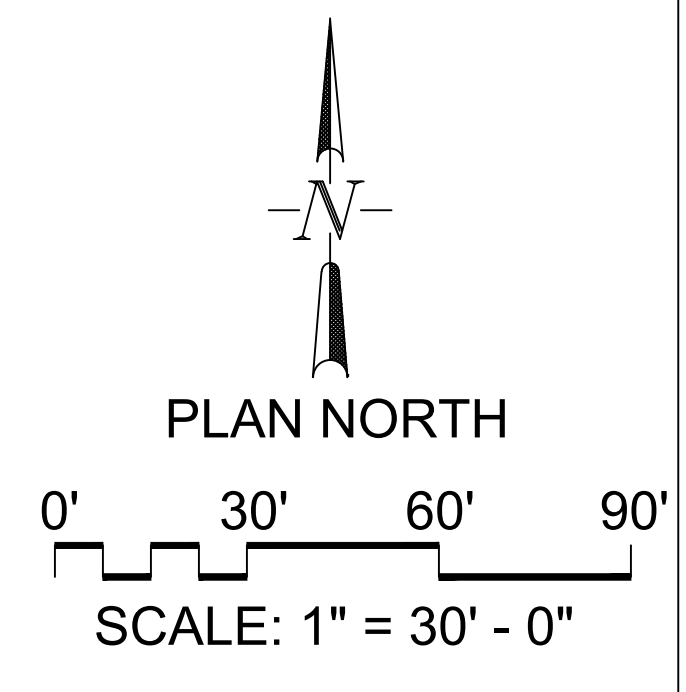
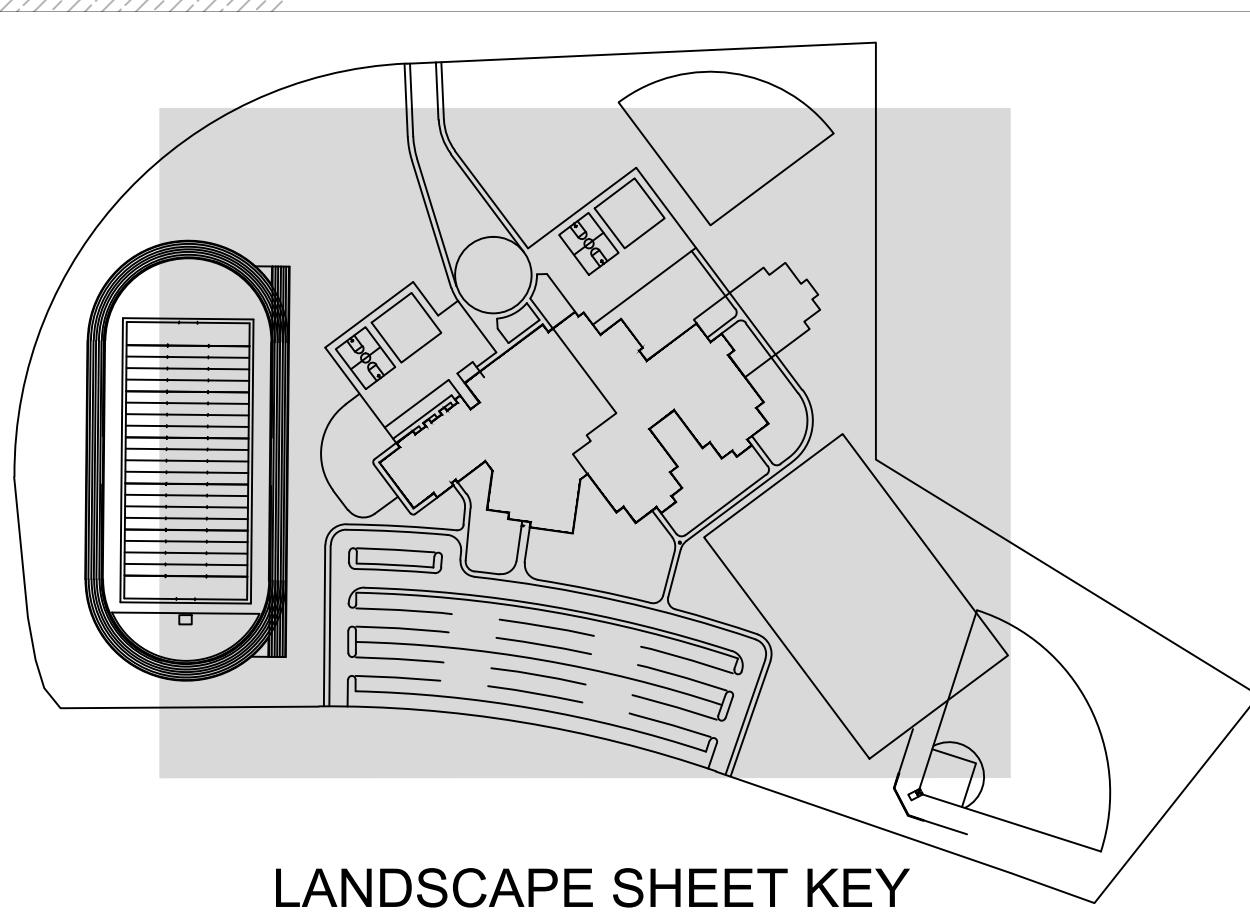
Area Key Plan



Landscape Plan

LS4.1

Project No. 17-001
 The LKA Partners Incorporated



SEE SHEETS LS7.0 AND LS8.0 FOR IRRIGATION VALVE AND EQUIPMENT SCHEDULES

L K A PART N E R S
 L.N.C.O.R.E.B.A.L.E.D.
 A Professional Corporation for Architecture and Planning
 430 North Tejon Street Suite 200
 Colorado Springs Colorado 80903
 tele: 719.473.8446 fax: 719.473.8448
 web: www.lkapartners.com



© Copyright 2018 The LKA Partners, Inc. This document and the information contained herein may not be reproduced or excerpted from without the express written permission of The LKA Partners, Inc. Unauthorized copying, disclosure or construction use are prohibited by copyright law.

New Widefield PK-8 School
 11060 Fontaine Blvd., Widefield, CO

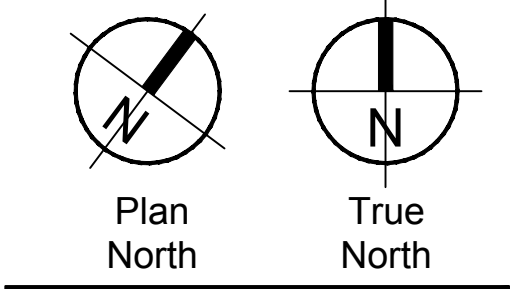
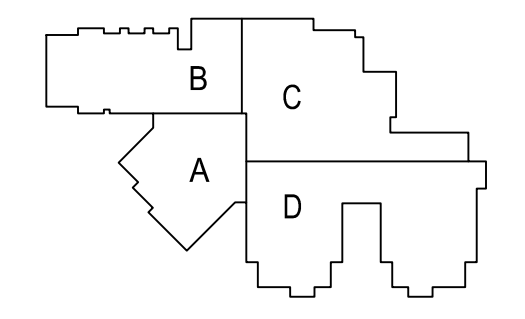
Widefield School District 3
 1820 Main Street
 Colorado Springs, CO 80911



Development Plan

Drawn: _____
 Checked: _____
 Issued: 15 May 2018
 Revised: _____

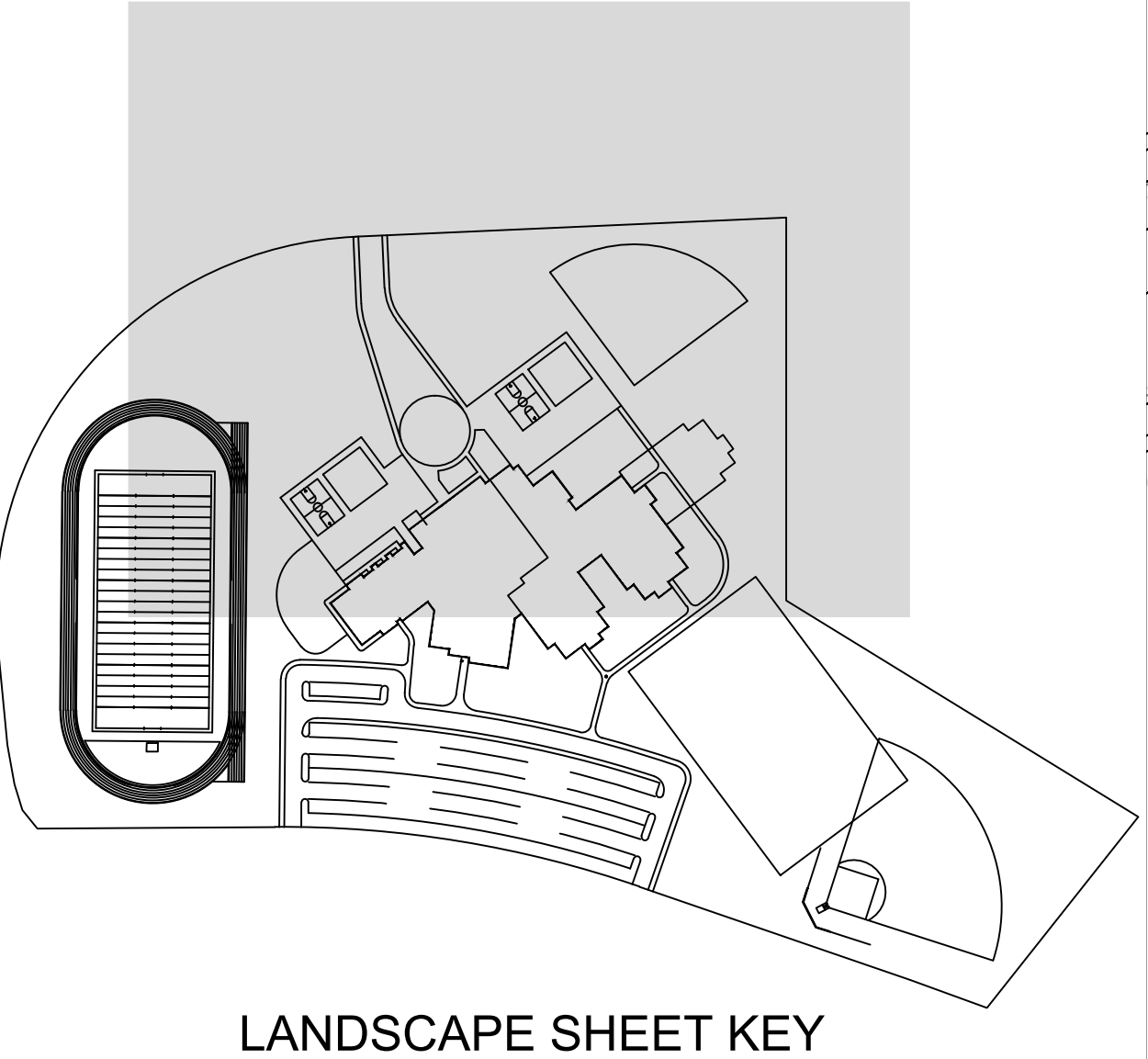
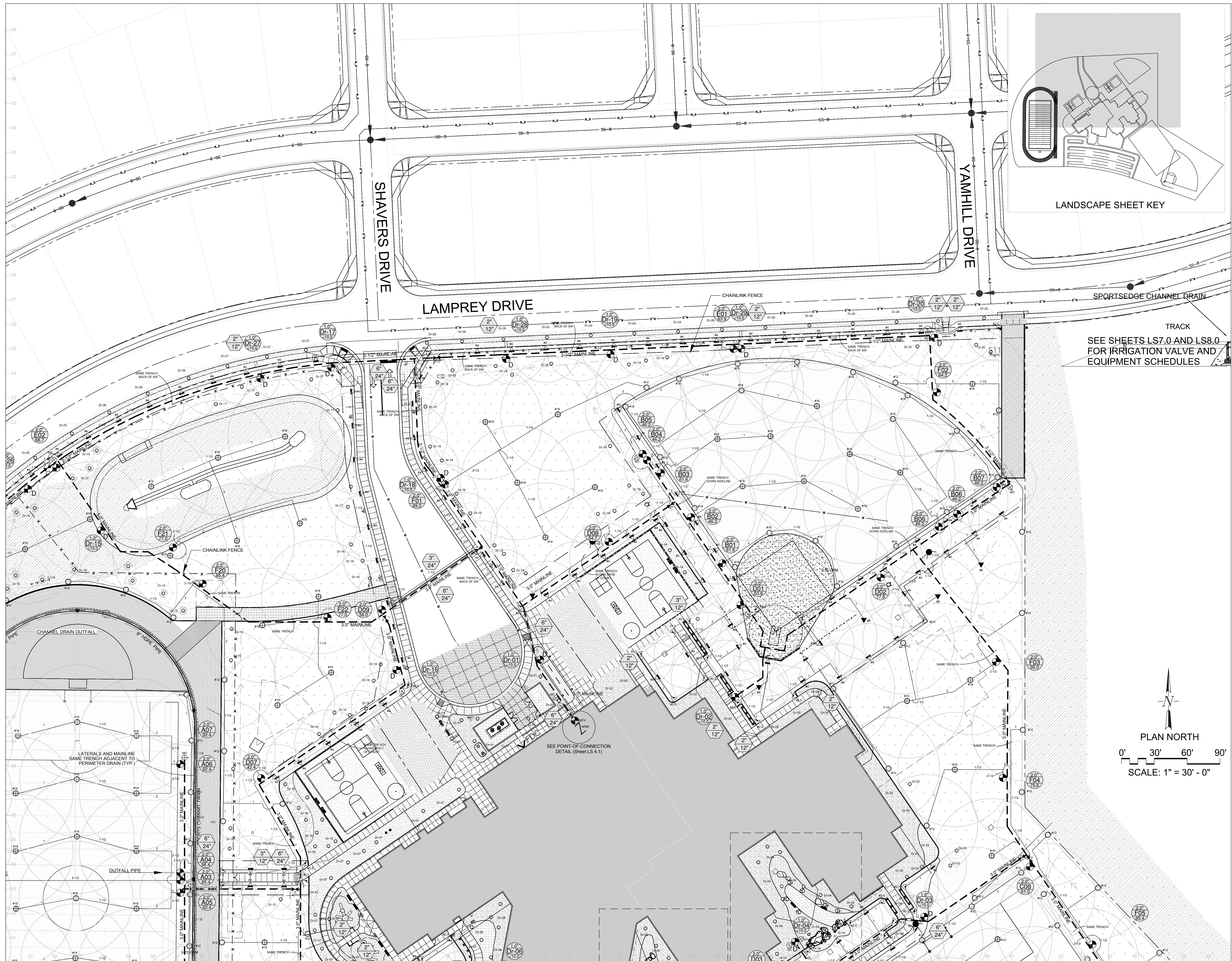
Area Key Plan



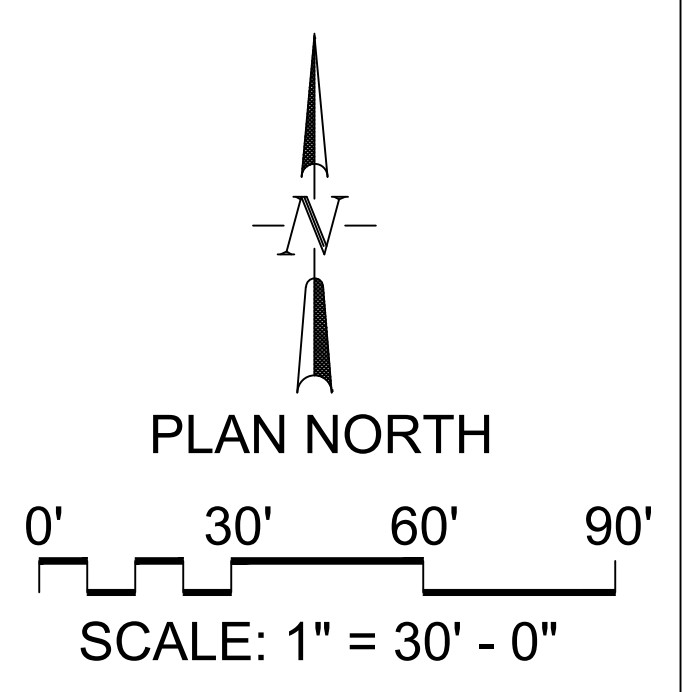
Irrigation Plan

LS5.0

Project No. 17.001
 The LKA Partners Incorporated



TRACK
SEE SHEETS LS7.0 AND LS8.0
FOR IRRIGATION VALVE AND
EQUIPMENT SCHEDULES



L K A PART N E R S
L I N C O R P O R A T E D
A Professional Corporation for Architecture and Planning

Willie Gunn
Landscape Architect
371 North West Street
Colorado Springs, CO 80903
www.gunnand.com
bill@gunnand.net

430 North Tejon Street Suite 200
Colorado Springs Colorado 80903
tele: 719.473.8446 fax: 719.473.8448
web: www.lkapartners.com

Copyright 2018 The LKA Partners, Inc. This document and the information contained herein may not be reproduced or excerpted from without the express written permission of The LKA Partners, Inc. Unauthorized copying, disclosure or construction use are prohibited by copyright law.

New Widefield PK-8 School
11060 Fontaine Blvd., Widefield, CO

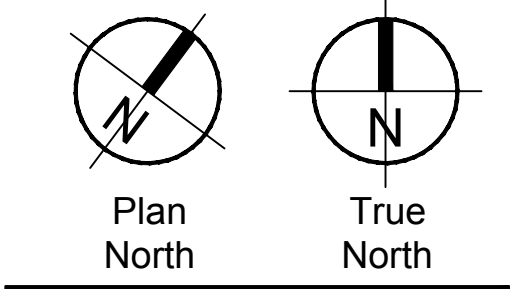
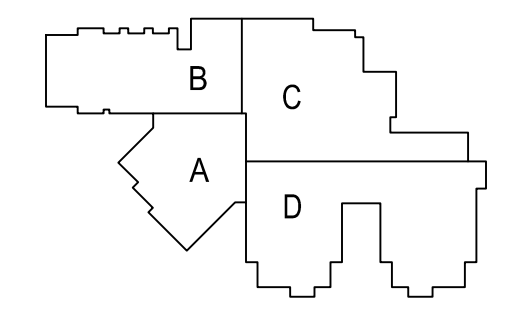
Widefield School District 3
1820 Main Street
Colorado Springs, CO 80911



Development Plan

Drawn: _____
Checked: _____
Issued: 15 May 2018
Revised: _____

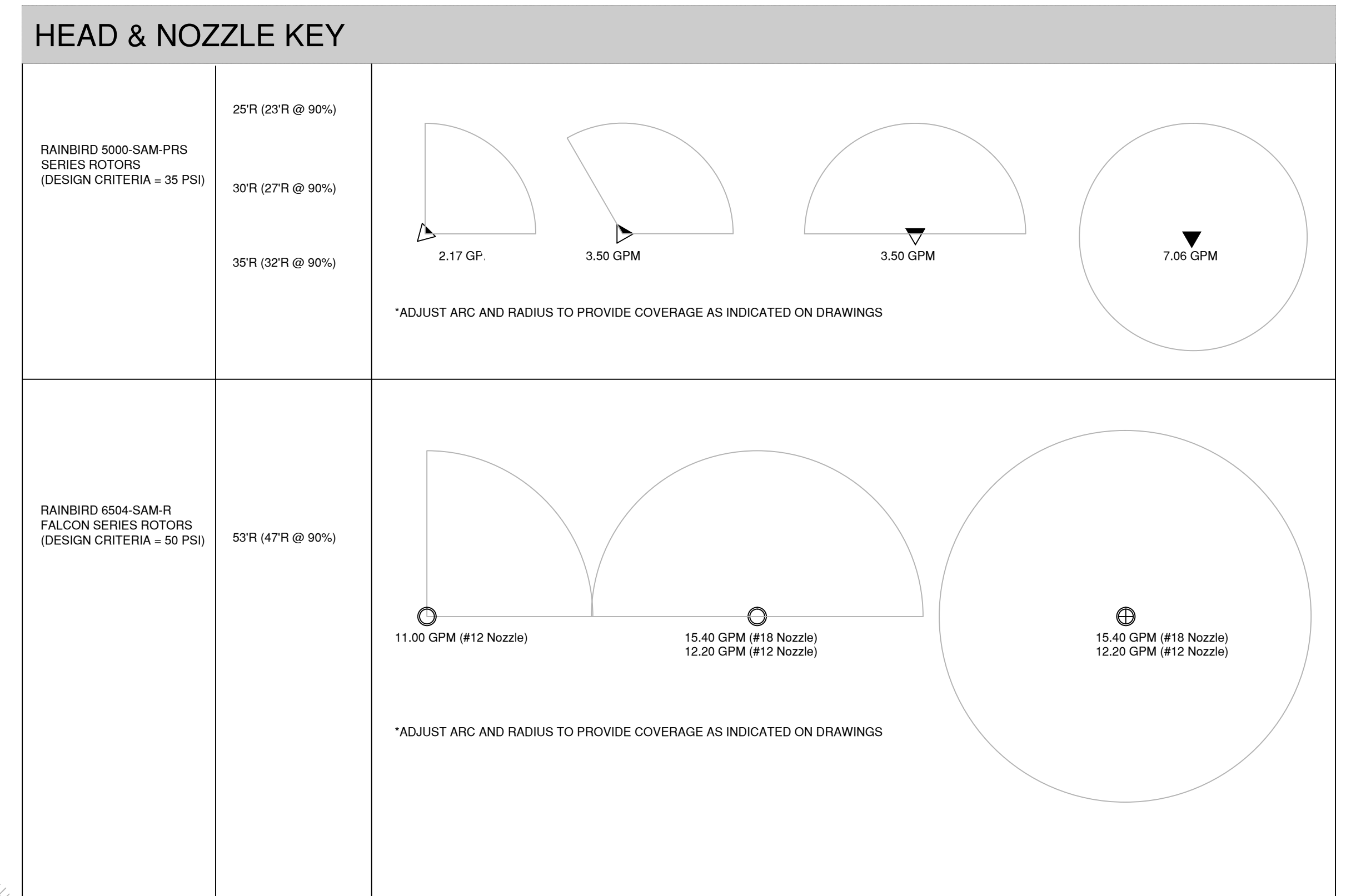
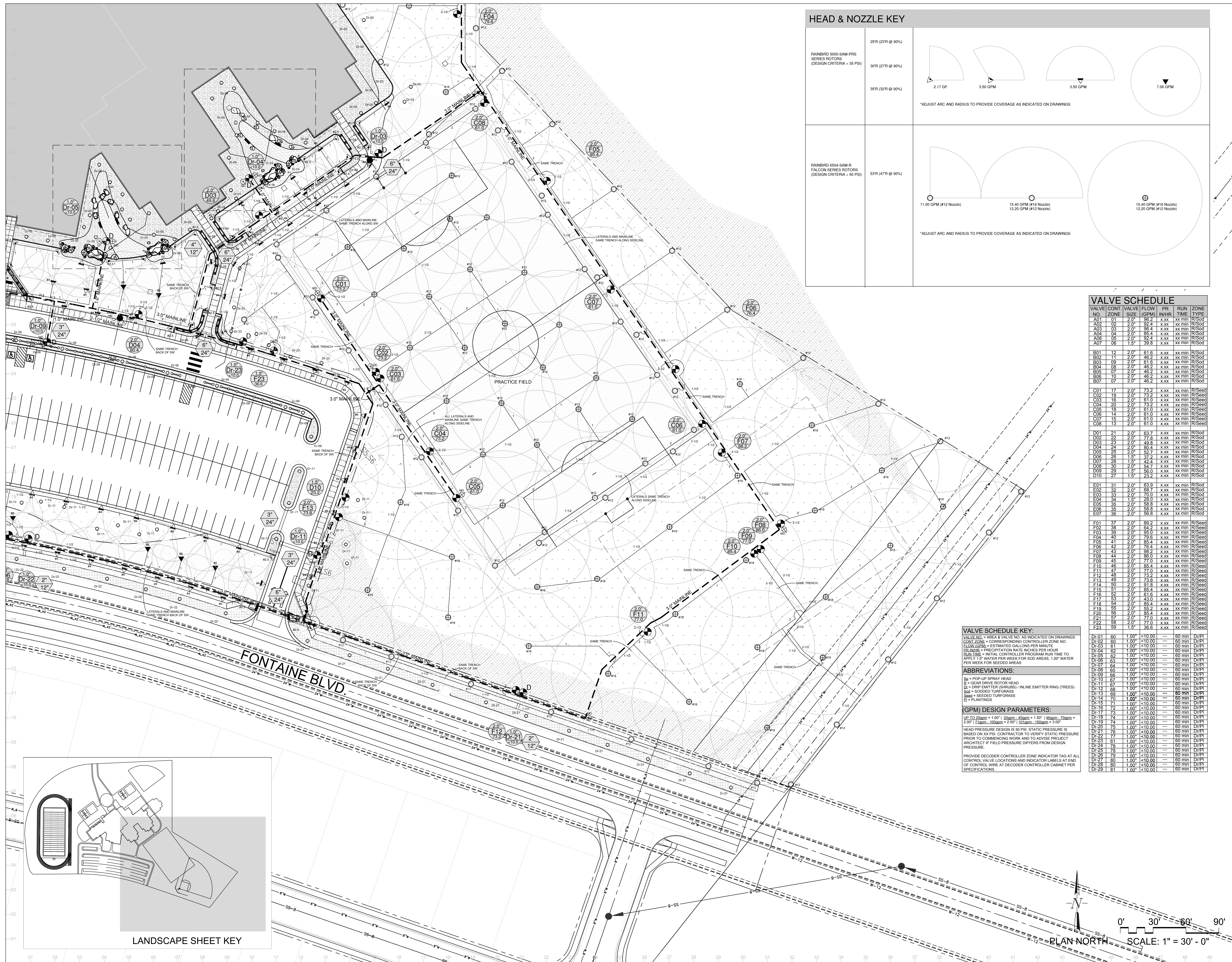
Area Key Plan



Irrigation Plan

LS6.0

Project No. 17.001
The LKA Partners Incorporated



VALVE SCHEDULE

NO.	ZONE	VALVE SIZE	FLOW (GPM)	PR IN/HR	RUN TIME	ZONE TYPE
A01	01	2.0"	96.2	x.xx	xx min	R/Seed
A02	02	2.0"	92.4	x.xx	xx min	R/Seed
A03	03	2.0"	96.4	x.xx	xx min	R/Seed
A04	04	2.0"	85.4	x.xx	xx min	R/Seed
A05	05	2.0"	92.4	x.xx	xx min	R/Seed
A07	06	1.5"	39.8	x.xx	xx min	R/Seed
B01	12	2.0"	61.6	x.xx	xx min	R/Seed
B02	11	2.0"	46.2	x.xx	xx min	R/Seed
B03	09	2.0"	61.6	x.xx	xx min	R/Seed
B04	08	2.0"	46.2	x.xx	xx min	R/Seed
B05	07	2.0"	46.2	x.xx	xx min	R/Seed
B06	10	2.0"	46.2	x.xx	xx min	R/Seed
B07	07	2.0"	46.2	x.xx	xx min	R/Seed
C01	17	2.0"	73.2	x.xx	xx min	R/Seed
C02	19	2.0"	73.2	x.xx	xx min	R/Seed
C03	18	2.0"	61.0	x.xx	xx min	R/Seed
C04	20	2.0"	73.2	x.xx	xx min	R/Seed
C05	18	2.0"	61.0	x.xx	xx min	R/Seed
C06	14	2.0"	61.0	x.xx	xx min	R/Seed
C07	15	2.0"	61.0	x.xx	xx min	R/Seed
C08	13	2.0"	61.0	x.xx	xx min	R/Seed
D01	21	2.0"	63.7	x.xx	xx min	R/Seed
D02	22	2.0"	77.8	x.xx	xx min	R/Seed
D03	23	2.0"	49.0	x.xx	xx min	R/Seed
D04	24	2.0"	80.4	x.xx	xx min	R/Seed
D05	25	2.0"	52.7	x.xx	xx min	R/Seed
D06	26	2.0"	37.4	x.xx	xx min	R/Seed
D07	28	1.5"	42.4	x.xx	xx min	R/Seed
D08	14	2.0"	54.7	x.xx	xx min	R/Seed
D09	29	1.5"	56.0	x.xx	xx min	R/Seed
D10	27	1.5"	23.2	x.xx	xx min	R/Seed
E01	31	2.0"	63.9	x.xx	xx min	R/Seed
E02	32	2.0"	68.7	x.xx	xx min	R/Seed
E03	33	2.0"	70.0	x.xx	xx min	R/Seed
E04	34	1.5"	28.0	x.xx	xx min	R/Seed
E05	35	2.0"	58.8	x.xx	xx min	R/Seed
E06	36	2.0"	58.8	x.xx	xx min	R/Seed
E07	36	2.0"	56.8	x.xx	xx min	R/Seed
F01	37	2.0"	89.2	x.xx	xx min	R/Seed
F02	38	2.0"	64.2	x.xx	xx min	R/Seed
F03	39	2.0"	95.0	x.xx	xx min	R/Seed
F04	40	2.0"	79.6	x.xx	xx min	R/Seed
F05	41	2.0"	85.4	x.xx	xx min	R/Seed
F06	42	2.0"	76.4	x.xx	xx min	R/Seed
F07	43	2.0"	88.2	x.xx	xx min	R/Seed
F08	44	2.0"	86.0	x.xx	xx min	R/Seed
F09	45	2.0"	77.0	x.xx	xx min	R/Seed
F10	46	2.0"	85.4	x.xx	xx min	R/Seed
F11	47	2.0"	77.0	x.xx	xx min	R/Seed
F12	48	2.0"	73.2	x.xx	xx min	R/Seed
F13	49	2.0"	73.8	x.xx	xx min	R/Seed
F14	50	2.0"	91.8	x.xx	xx min	R/Seed
F15	51	2.0"	85.4	x.xx	xx min	R/Seed
F16	52	2.0"	61.6	x.xx	xx min	R/Seed
F17	53	1.5"	43.0	x.xx	xx min	R/Seed
F18	54	2.0"	85.4	x.xx	xx min	R/Seed
F19	55	2.0"	55.2	x.xx	xx min	R/Seed
F20	56	2.0"	85.4	x.xx	xx min	R/Seed
F21	57	2.0"	77.0	x.xx	xx min	R/Seed
F22	58	2.0"	77.0	x.xx	xx min	R/Seed
F23	59	1.5"	36.6	x.xx	xx min	R/Seed
Dr-01	60	1.00"	<10.00	---	60 min	Dr/Pi
Dr-02	60	1.00"	<10.00	---	60 min	Dr/Pi
Dr-03	61	1.00"	<10.00	---	60 min	Dr/Pi
Dr-04	62	1.00"	<10.00	---	60 min	Dr/Pi
Dr-05	62	1.00"	<10.00	---	60 min	Dr/Pi
Dr-06	63	1.00"	<10.00	---	60 min	Dr/Pi
Dr-07	64	1.00"	<10.00	---	60 min	Dr/Pi
Dr-08	65	1.00"	<10.00	---	60 min	Dr/Pi
Dr-09	66	1.00"	<10.00	---	60 min	Dr/Pi
Dr-10	67	1.00"	<10.00	---	60 min	Dr/Pi
Dr-11	67	1.00"	<10.00	---	60 min	Dr/Pi
Dr-12	68	1.00"	<10.00	---	60 min	Dr/Pi
Dr-13	69	1.00"	<10.00	---	60 min	Dr/Pi
Dr-14	70	1.00"	<10.00	---	60 min	Dr/Pi
Dr-15	71	1.00"	<10.00	---	60 min	Dr/Pi
Dr-16	72	1.00"	<10.00	---	60 min	Dr/Pi
Dr-17	73	1.00"	<10.00	---	60 min	Dr/Pi
Dr-18	74	1.00"	<10.00	---	60 min	Dr/Pi
Dr-19	74	1.00"	<10.00	---	60 min	Dr/Pi
Dr-20	75	1.00"	<10.00	---	60 min	Dr/Pi
Dr-21	76	1.00"	<10.00	---	60 min	Dr/Pi
Dr-22	77	1.00"	<10.00	---	60 min	Dr/Pi
Dr-23	81	1.00"	<10.00	---	60 min	Dr/Pi
Dr-24	78	1.00"	<10.00	---	60 min	Dr/Pi
Dr-25	78	1.00"	<10.00	---	60 min	Dr/Pi
Dr-26	78	1.00"	<10.00	---	60 min	Dr/Pi
Dr-27	80	1.00"	<10.00	---	60 min	Dr/Pi
Dr-28	80	1.00"	<10.00	---	60 min	Dr/Pi
Dr-29	81	1.00"	<10.00	---	60 min	Dr/Pi

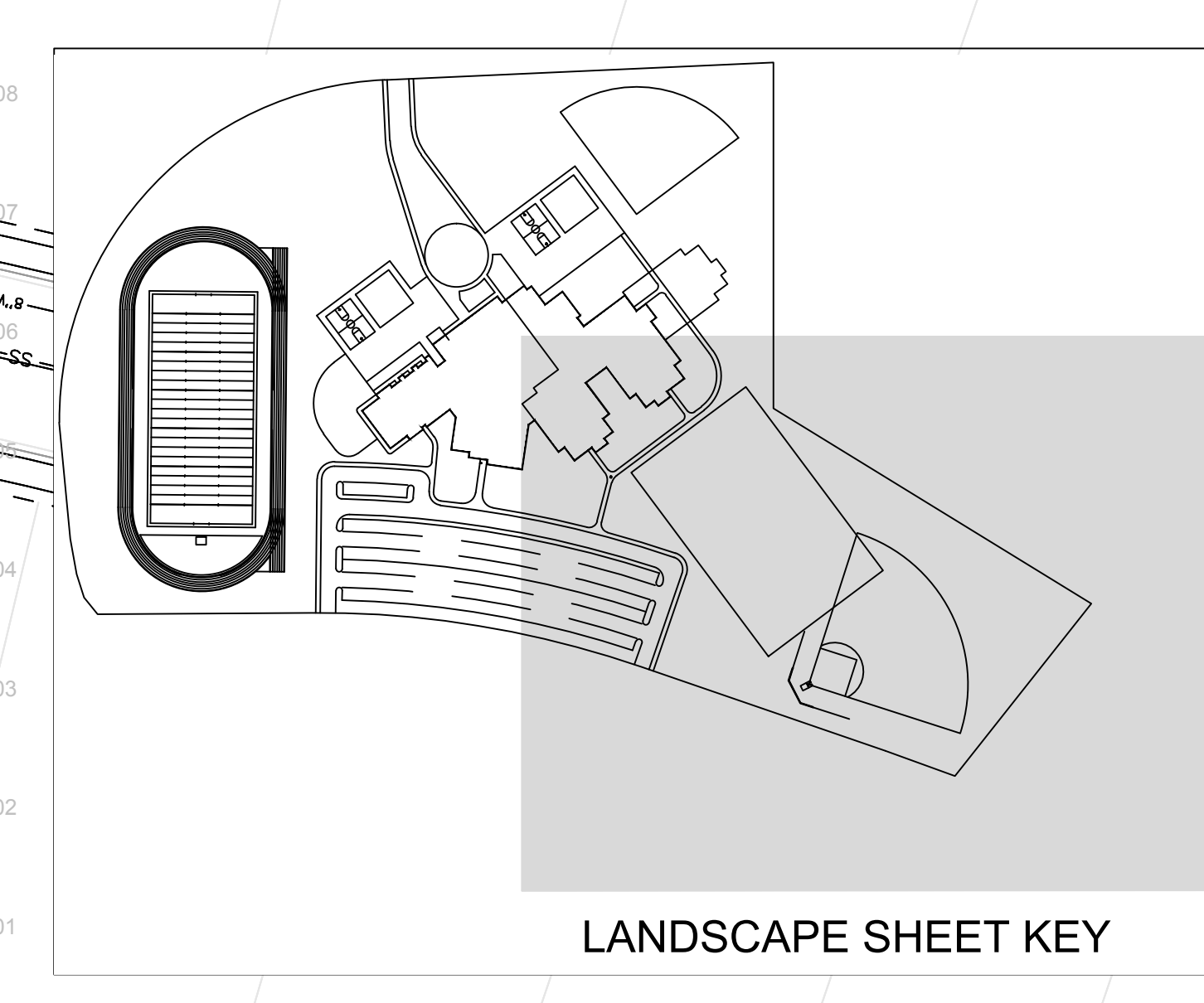
VALVE SCHEDULE KEY:
 VALVE NO. = AREA & VALVE NO. AS INDICATED ON DRAWINGS
 CONT. ZONE = CORRESPONDING CONTROLLER ZONE NO.
 FLOW (GPM) = ESTIMATED GALLONS PER MINUTE
 PR IN/HR = PRECIPITATION RATE INCHES PER HOUR
 RUN TIME = INITIAL CONTROLLER PROGRAM RUN TIME TO APPLY 1.5" WATER PER WEEK FOR SOG AREAS, 1.00" WATER PER WEEK FOR SEED AREAS

ABBREVIATIONS:
 Sp = POP-UP SPRAY HEAD
 R = GEAR DRIVE ROTOR HEAD
 Dr = DRIP EMITTER (SHRUBS) / INLINE EMITTER RING (TREES)
 Sog = SOODED TURFGRASS
 Seed = SEEDD TURFGRASS
 Pl = PLANTINGS

(GPM) DESIGN PARAMETERS:
 UP TO 20gpm = 1.00" | 20gpm - 45gpm = 1.50" | 46gpm - 70gpm = 2.00" | 71gpm - 100gpm = 2.50" | 101gpm - 150gpm = 3.00"

HEAD PRESSURE DESIGN IS 50 PSI. STATIC PRESSURE IS BASED ON XLI PSI. CONTRACTOR TO VERIFY STATIC PRESSURE PRIOR TO COMMENCING WORK AND TO ADVISE PROJECT ARCHITECT IF FIELD PRESSURE DIFFERS FROM DESIGN PRESSURE.

PROVIDE DECODER CONTROLLER ZONE INDICATOR TAG AT ALL CONTROL VALVE LOCATIONS AND INDICATOR TAGS AT END OF CONTROL WIRE AT DECODER CONTROLLER CABINET PER SPECIFICATIONS.



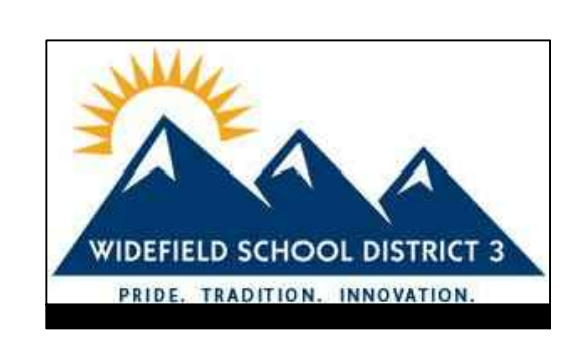
LKA PARTNERS
 L.N.C.O.R.P.O.R.A.T.E.D.
 A Professional Corporation for Architecture and Planning
 430 North Tejon Street Suite 200
 Colorado Springs Colorado 80903
 tele: 719.473.8446 fax: 719.473.8448
 web: www.lkpartners.com



© Copyright 2018 The LKA Partners, Inc. This document and the information contained herein may not be reproduced or excerpted without the express written permission of The LKA Partners, Inc. Unauthorized copying, disclosure or construction use are prohibited by copyright law.

New Widefield PK-8 School
 11060 Fontaine Blvd., Widefield, CO

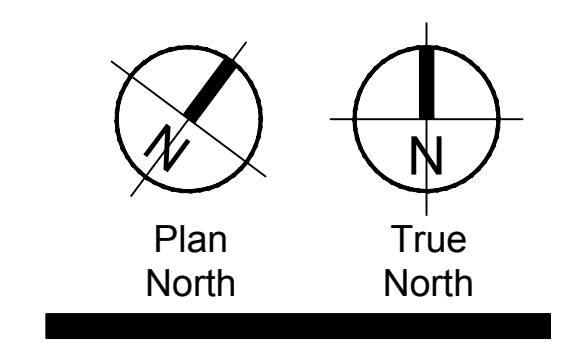
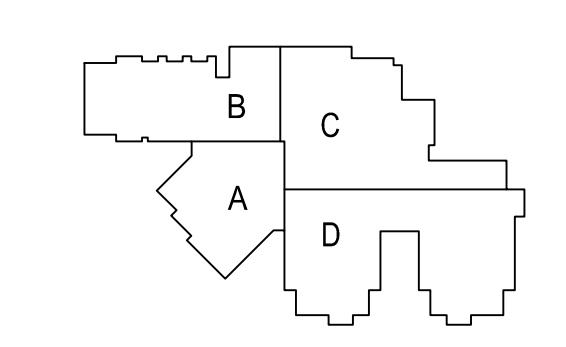
Widefield School District 3
 1820 Main Street
 Colorado Springs, CO 80911



Development Plan

Drawn: _____
 Checked: _____
 Issued: 15 May 2018
 Revised: _____

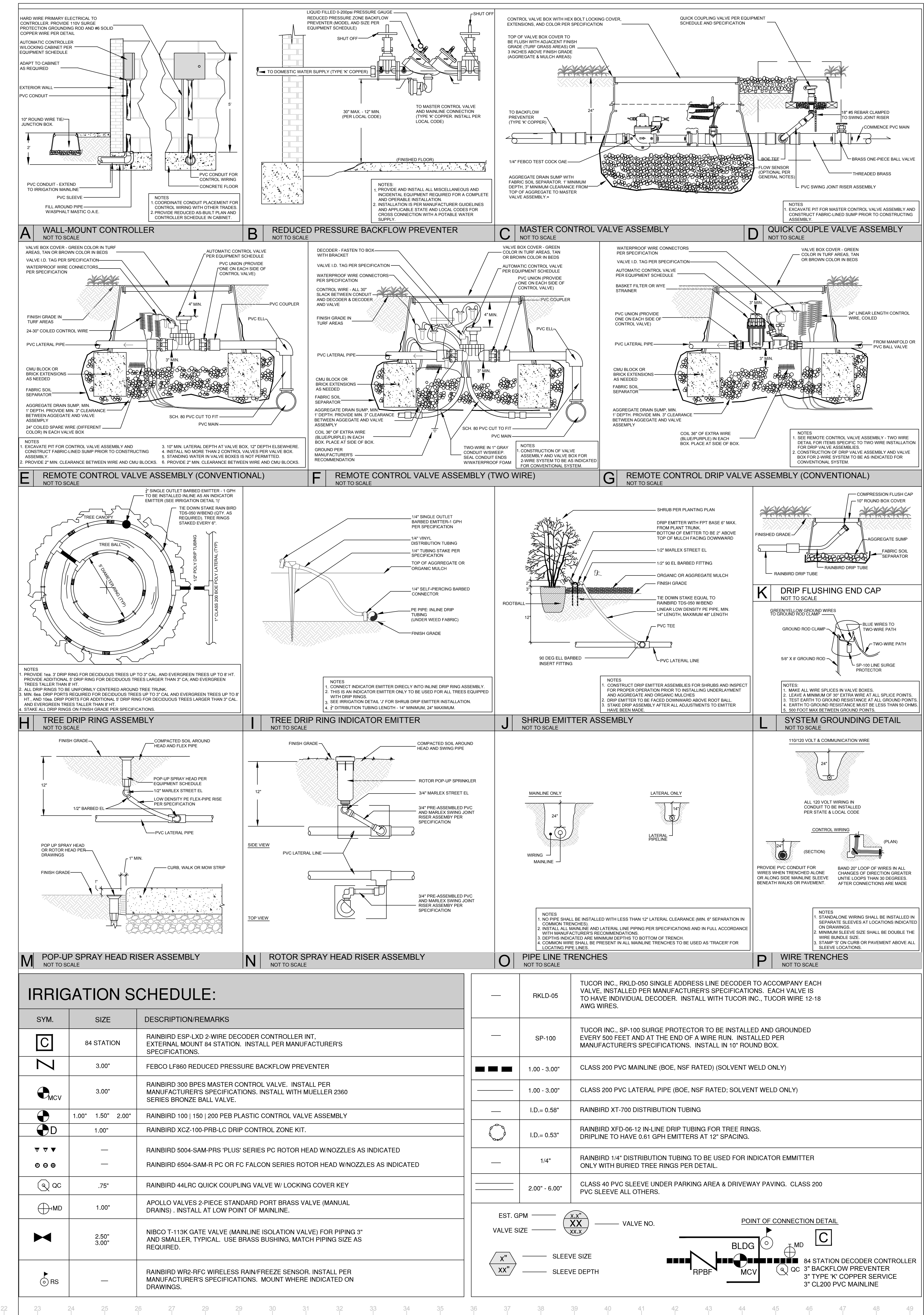
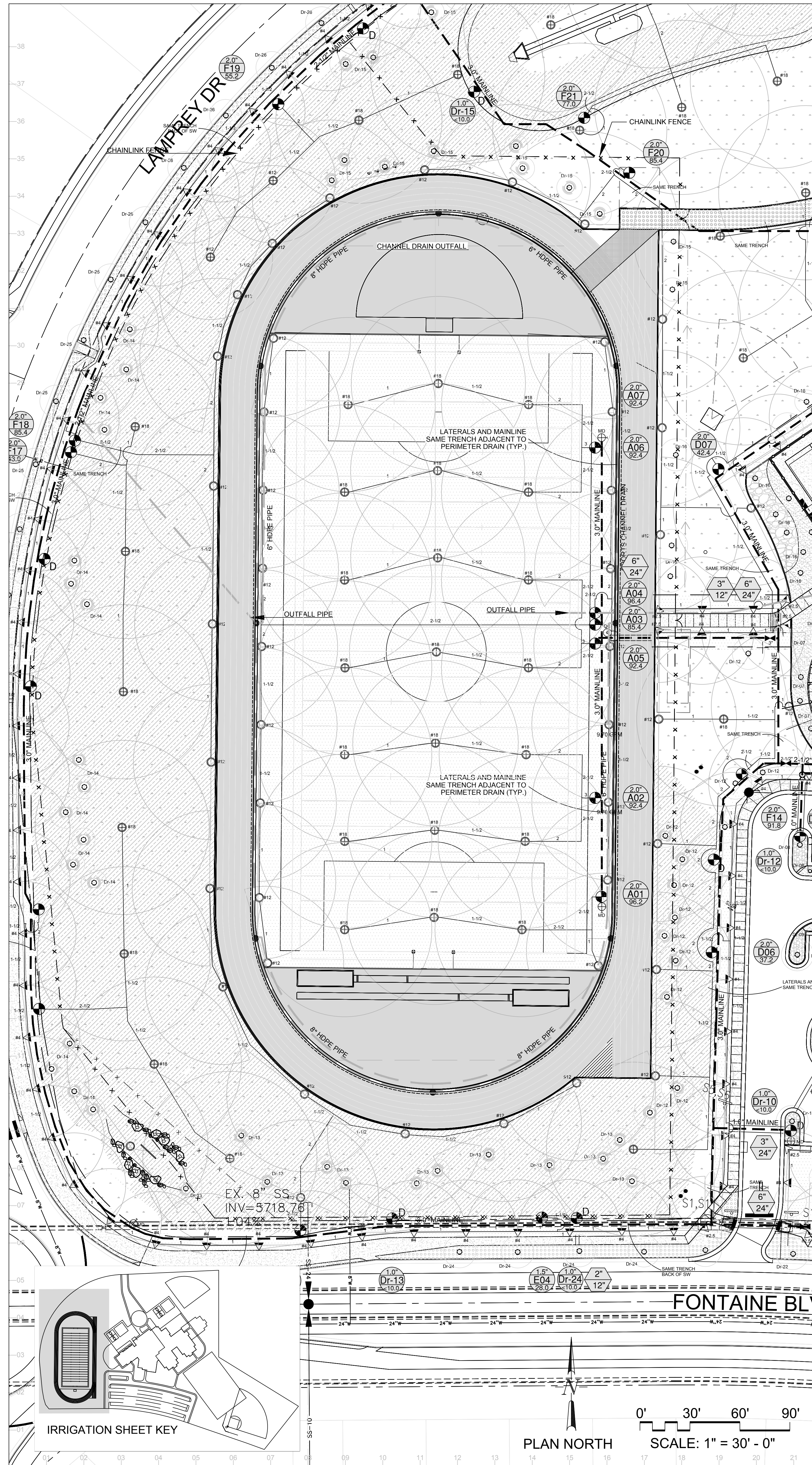
Area Key Plan



Irrigation Plan

LS7.0

Project No. 17.001
 The LKA Partners Incorporated



IRRIGATION SCHEDULE:

SYM.	SIZE	DESCRIPTION/REMARKS
C	84 STATION	RAINBIRD ESP-LXD 2-WIRE DECODER CONTROLLER INT. EXTERNAL MOUNT 84 STATION. INSTALL PER MANUFACTURER'S SPECIFICATIONS.
Z	3.00"	FEBCO LF860 REDUCED PRESSURE BACKFLOW PREVENTER
MCV	3.00"	RAINBIRD 300 BPES MASTER CONTROL VALVE. INSTALL PER MANUFACTURER'S SPECIFICATIONS. INSTALL WITH MUELLER 2360 SERIES BRONZE BALL VALVE.
D	1.00" 1.50" 2.00"	RAINBIRD 100 150 200 PEB PLASTIC CONTROL VALVE ASSEMBLY
D	1.00"	RAINBIRD XCZ-100-PRB-LC DRIP CONTROL ZONE KIT.
▼▼▼	—	RAINBIRD 5004-SAM-PRS 'PLUS' SERIES PC ROTOR HEAD W/NOZZLES AS INDICATED
●●●	—	RAINBIRD 6504-SAM-R PC OR FC FALCON SERIES ROTOR HEAD W/NOZZLES AS INDICATED
QC	.75"	RAINBIRD 44LRC QUICK COUPLING VALVE W/ LOCKING COVER KEY
MD	1.00"	APOLLO VALVES 2-PIECE STANDARD PORT BRASS VALVE (MANUAL DRAINS). INSTALL AT LOW POINT OF MAINLINE.
TV	2.50" 3.00"	NIBCO T-113K GATE VALVE (MAINLINE ISOLATION VALVE) FOR PIPING 3" AND SMALLER, TYPICAL. USE BRASS BUSHING, MATCH PIPING SIZE AS REQUIRED.
RS	—	RAINBIRD WR2-RFC WIRELESS RAIN/FREEZE SENSOR. INSTALL PER MANUFACTURER'S SPECIFICATIONS. MOUNT WHERE INDICATED ON DRAWINGS.

—	RKLD-05	TUCOR INC. RKLD-050 SINGLE ADDRESS LINE DECODER TO ACCOMPANY EACH VALVE. INSTALL PER MANUFACTURER'S SPECIFICATIONS. EACH VALVE IS TO HAVE INDIVIDUAL DECODER. INSTALL WITH TUCOR INC. TUCOR WIRE 12-18 AWG WIRES.
—	SP-100	TUCOR INC. SP-100 SURGE PROTECTOR TO BE INSTALLED AND GROUNDED EVERY 500 FEET AND AT THE END OF A WIRE RUN. INSTALL PER MANUFACTURER'S SPECIFICATIONS. INSTALL IN 10" ROUND BOX.
■	1.00 - 3.00"	CLASS 200 PVC MAINLINE (BOE, NSF RATED) (SOLVENT WELD ONLY)
—	1.00 - 3.00"	CLASS 200 PVC LATERAL PIPE (BOE, NSF RATED; SOLVENT WELD ONLY)
—	I.D. = 0.58"	RAINBIRD XT-700 DISTRIBUTION TUBING
○	I.D. = 0.53"	RAINBIRD XFD-06-12 IN-LINE DRIP TUBING FOR TREE RINGS. DRIPLINE TO HAVE 0.61 GPH EMITTERS AT 12" SPACING.
—	1/4"	RAINBIRD 1/4" DISTRIBUTION TUBING TO BE USED FOR INDICATOR EMITTER ONLY WITH BURIED TREE RINGS PER DETAIL.
—	2.00" - 6.00"	CLASS 40 PVC SLEEVE UNDER PARKING AREA & DRIVEWAY PAVING. CLASS 200 PVC SLEEVE ALL OTHERS.

EST. GPM — XX — VALVE NO. — POINT OF CONNECTION DETAIL

VALVE SIZE — XX" — SLEEVE SIZE — SLEEVE DEPTH

84 STATION DECODER CONTROLLER
3" TYPE 'K' COPPER SERVICE
3" CLASS 200 PVC MAINLINE

LKA PARTNERS
INCORPORATED
A Professional Corporation for Architecture and Planning

430 North Tejon Street Suite 200
Colorado Springs Colorado 80903
Tel: 719.473.9446 Fax: 719.473.9448
www.lkpartners.com

© Copyright 2018 The LKA Partners, Inc. This document and the information contained herein may not be reproduced or excerpted from without the express written permission of The LKA Partners, Inc. Unauthorized copying, disclosure or construction use are prohibited by copyright law.

New Widefield PK-8 School
11060 Fontaine Blvd., Widefield, CO

Widefield School District 3
1820 Main Street
Colorado Springs, CO 80911

WIDEFIELD SCHOOL DISTRICT 3
PRIDE. TRADITION. INNOVATION.

Development Plan

Drawn: _____
Checked: _____
Issued: 15 May 2018
Revised: _____

Area Key Plan

Plan North True North

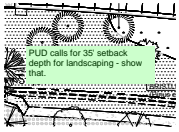
Irrigation Plan and Details

LS8.0

Project No. 17.001
The LKA Partners Incorporated

Markup Summary

dsdkendall (3)



Subject: Text Box
Page Label: 1
Author: dsdkendall
Date: 7/10/2018 10:42:49 AM
Color: ■

PUD calls for 35' setback depth for landscaping - show that.



Subject: Text Box
Page Label: 1
Author: dsdkendall
Date: 7/10/2018 11:02:09 AM
Color: ■

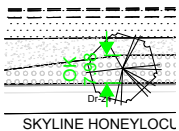
Include a table of how many trees are required and provided per the PUD guidelines that were attached in another comment.



Subject: Text Box
Page Label: 2
Author: dsdkendall
Date: 7/3/2018 10:36:27 AM
Color: ■

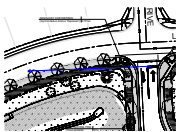
Make sure tree's do not cause too much debris in the Right of Way. - License Agreement w/ County Engineer.

dsdrice (6)



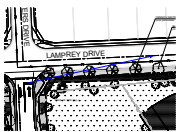
Subject: Length Measurement
Page Label: 4
Author: dsdrice
Date: 7/3/2018 11:10:06 AM
Color: ■

7.98



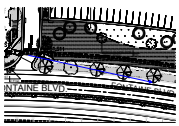
Subject: Arrow
Page Label: 2
Author: dsdrice
Date: 7/3/2018 11:12:47 AM
Color: ■

Verify sight distance and adjust trees if necessary.



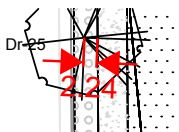
Subject: Arrow
Page Label: 2
Author: dsdrice
Date: 7/3/2018 11:12:47 AM
Color: ■

Verify sight distance and adjust trees if necessary.



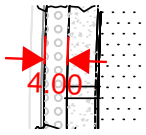
Subject: Arrow
Page Label: 1
Author: dsdrice
Date: 7/3/2018 11:15:35 AM
Color: ■

Verify sight distance and adjust trees if necessary.



Subject: Length Measurement
Page Label: 4
Author: dsdrice
Date: 7/3/2018 9:56:14 AM
Color: ■

2.24



Subject: Length Measurement

Page Label: 4

Author: dsdrice

Date: 7/3/2018 9:56:27 AM

Color: ■

4.00