

**LKA PARTNERS**  
INCORPORATED  
A Professional Corporation for Architecture and Planning

*Willie Green*  
ARCHITECT  
LANDSCAPE ARCHITECTURE  
731 North West Street  
Colorado Springs, Colorado 80903  
Phone: 719.473.8446  
Fax: 719.473.8448  
www.lkapartners.com  
bill@lkapartners.net

© Copyright 2019 The LKA Partners, Inc. This document and the information contained herein may not be reproduced or excerpted from without the express written permission of The LKA Partners, Inc. Unauthorized copying, disclosure or construction use are prohibited by copyright law.

430 North Tejon Street Suite 200  
Colorado Springs, Colorado 80903  
tel: 719.473.8446 fax: 719.473.8448  
web: www.lkapartners.com

**New Widefield PK-8 School**  
11060 Fontaine Blvd., Widefield, CO

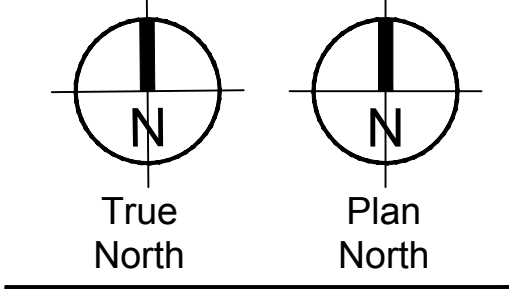
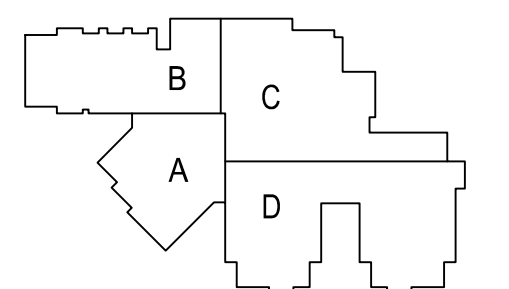
**Widefield School District 3**  
1820 Main Street  
Colorado Springs, CO 80911



### Construction Documents

Drawn:	
Checked:	
Issued:	28 February 2019
Revised:	
	CCD-007, October 25, 2018
	CCD-011, January 11, 2019
	CCD-016, March 1, 2019

### Area Key Plan

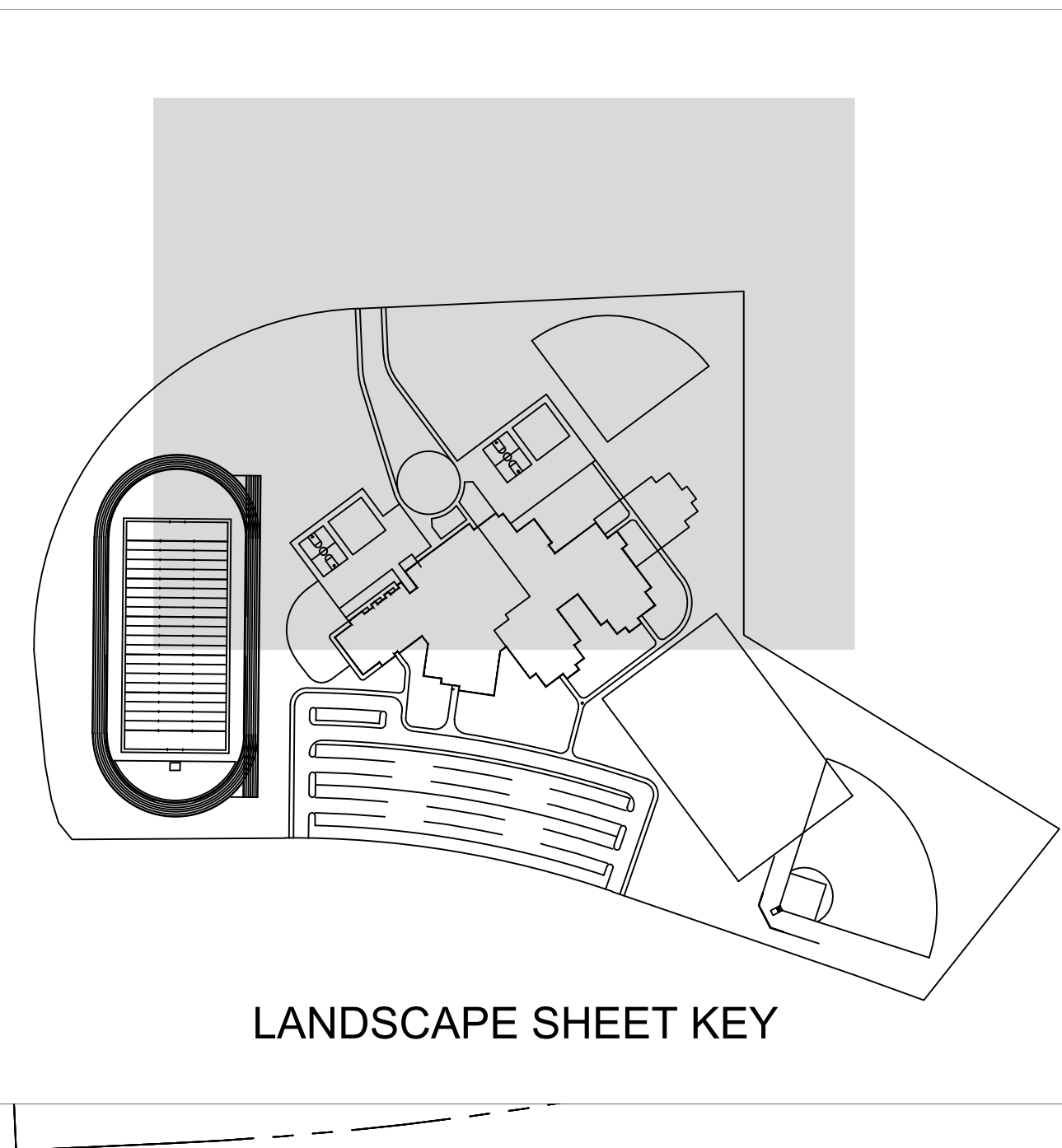


### Landscape Plan

# LS1.0

Project No. 17-001  
The LKA Partners Incorporated





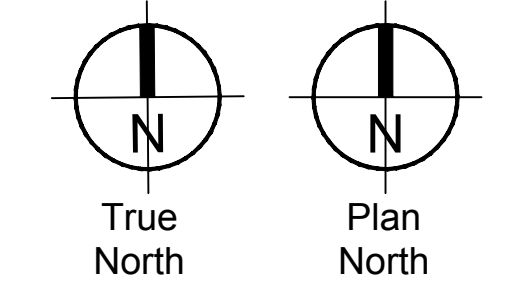
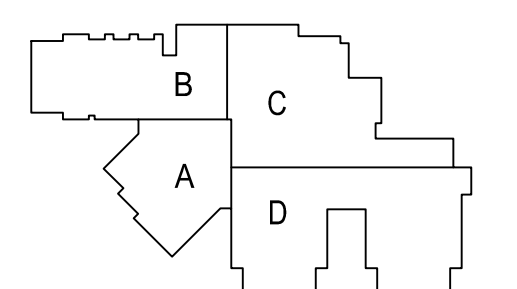
**New Widefield PK-8 School**  
11060 Fontaine Blvd., Widefield, CO  
**Widefield School District 3**  
1820 Main Street  
Colorado Springs, CO 80911



**Construction Documents**

Drawn:	---
Checked:	---
Issued:	28 February 2019
Revised:	1. CCD-007, October 25, 2018
	2. CCD-011, January 11, 2019
	3. CCD-016, March 1, 2019

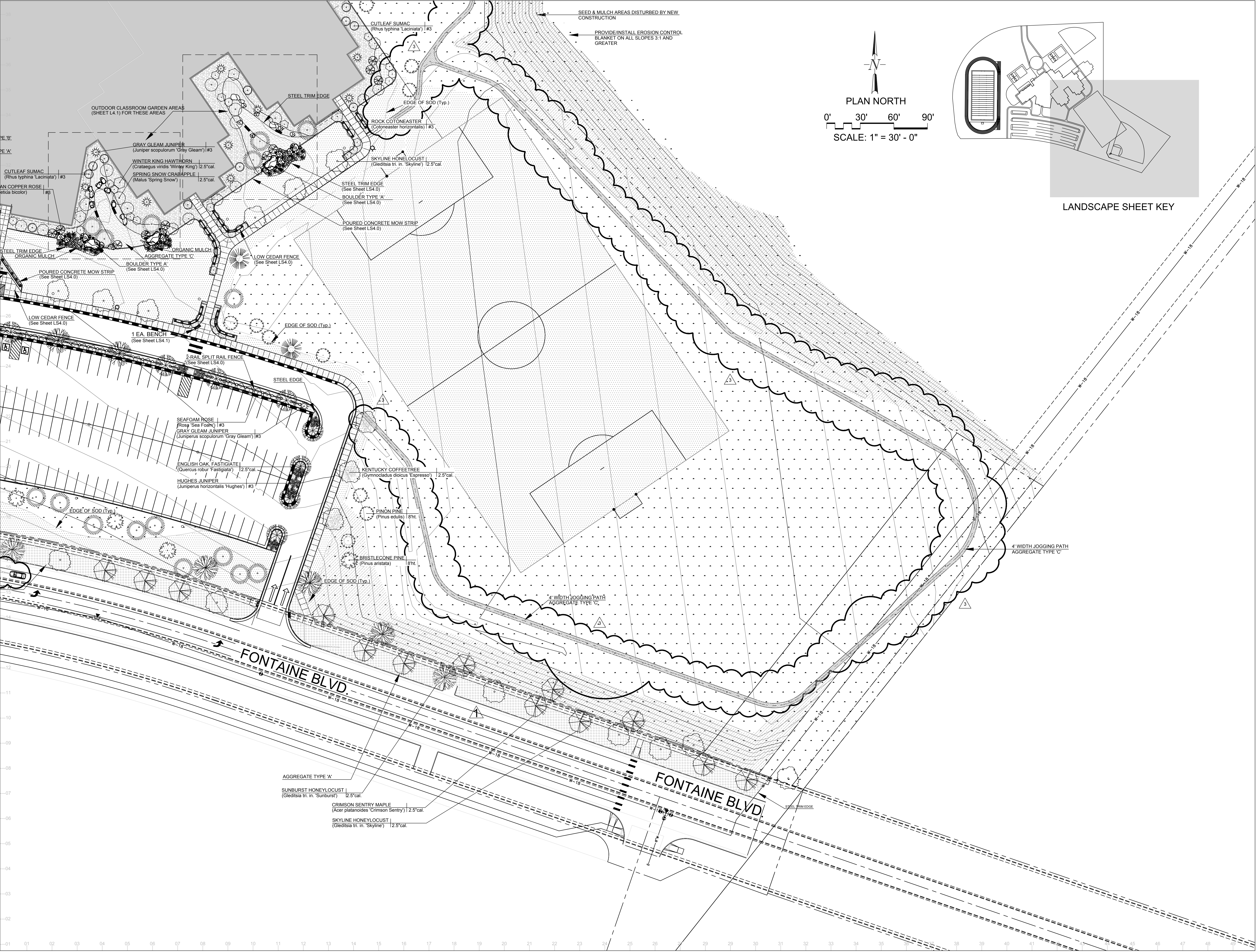
**Area Key Plan**



**Landscape Plan**

**LS2.0**





**L K A PARTNERS**  
INCORPORATED  
A Professional Corporation for Architecture and Planning  
430 North Tejon Street Suite 200  
Colorado Springs Colorado 80903  
tel: 719.473.8446 fax: 719.473.8448  
web: www.lkapartners.com



© Copyright 2019 The LKA Partners, Inc. This document and the information contained herein may not be reproduced or excerpted from without the express written permission of The LKA Partners, Inc. Unauthorized copying, disclosure or construction use are prohibited by copyright law.

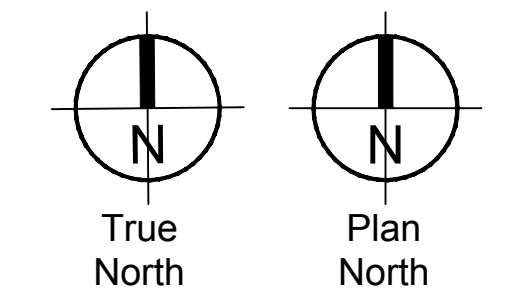
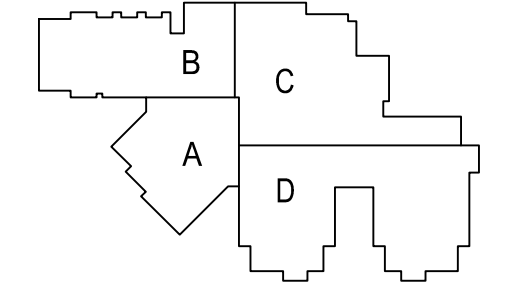
**New Widefield PK-8 School**  
11060 Fontaine Blvd., Widefield, CO  
**Widefield School District 3**  
1820 Main Street  
Colorado Springs, CO 80911



Construction Documents

Drawn:	
Checked:	
Issued:	28 February 2019
Revised:	
	CCD-007, October 25, 2018
	CCD-011, January 11, 2019
	CCD-016, March 1, 2019

Area Key Plan

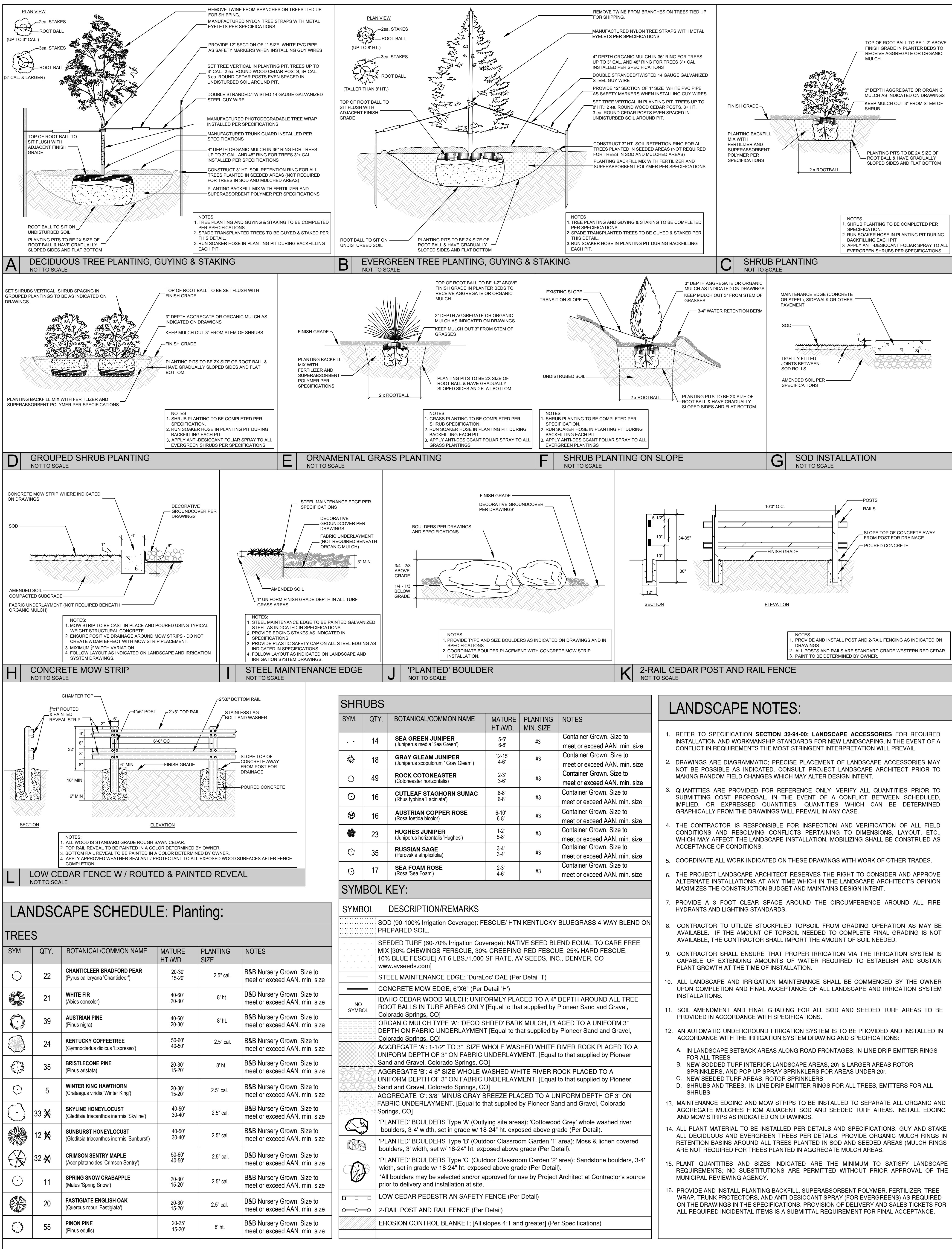
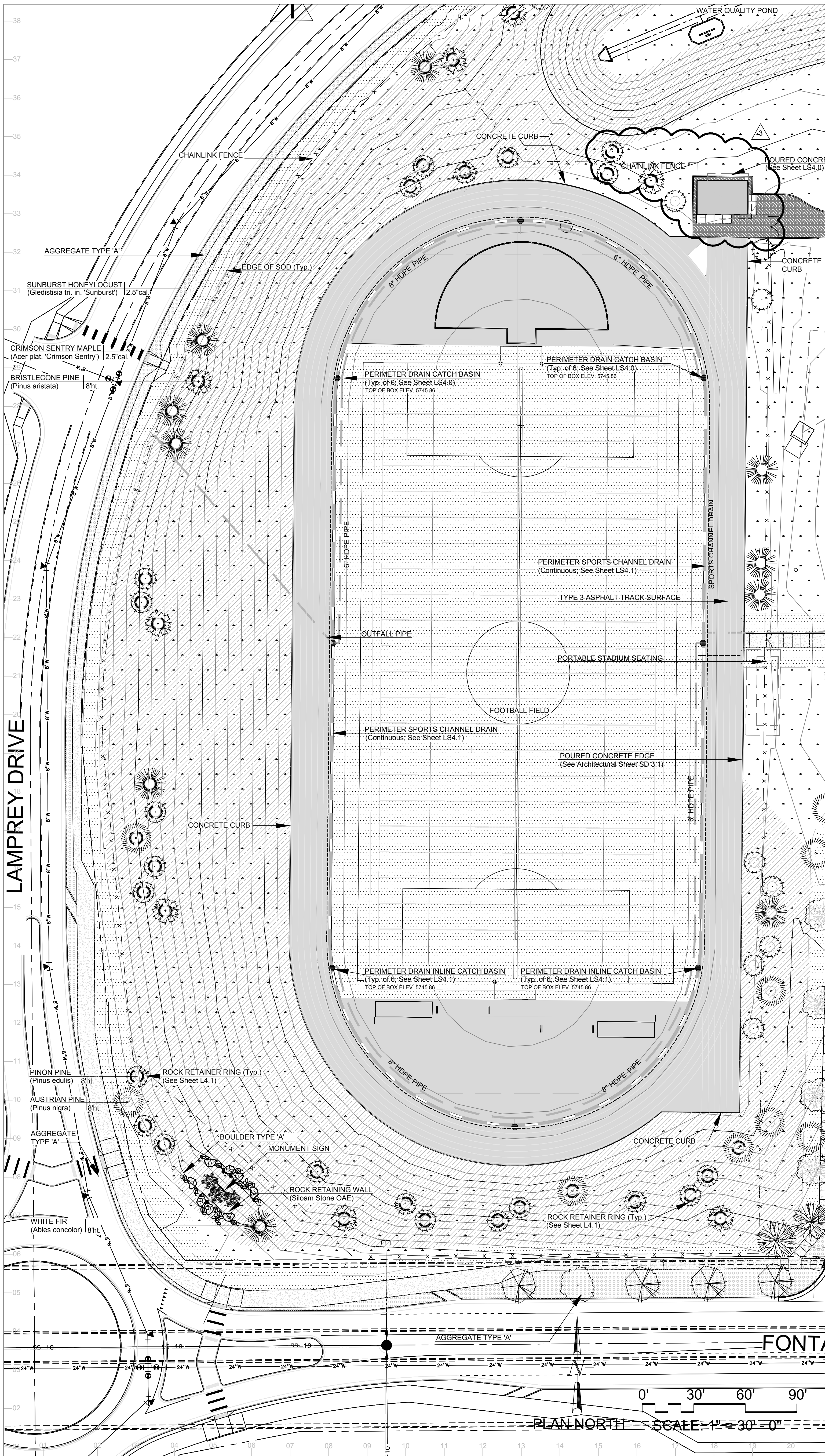


Landscape Plan

**LS3.0**

Project No. 17-001  
The LKA Partners Incorporated

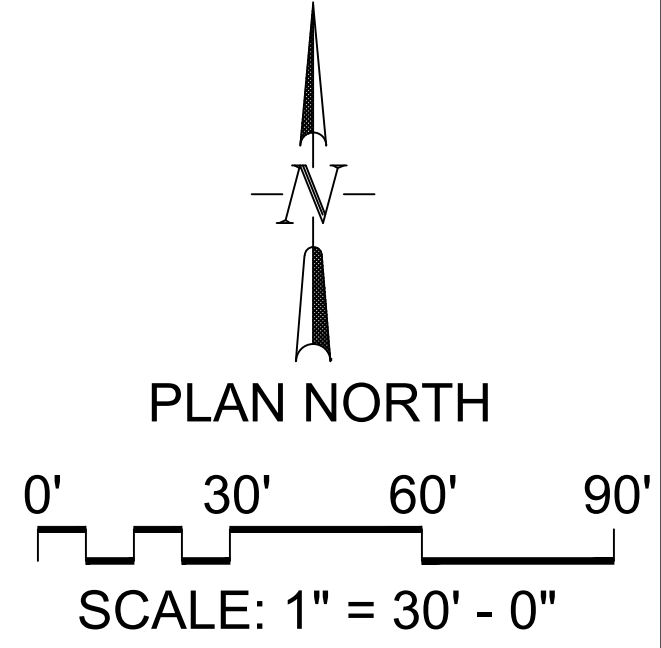
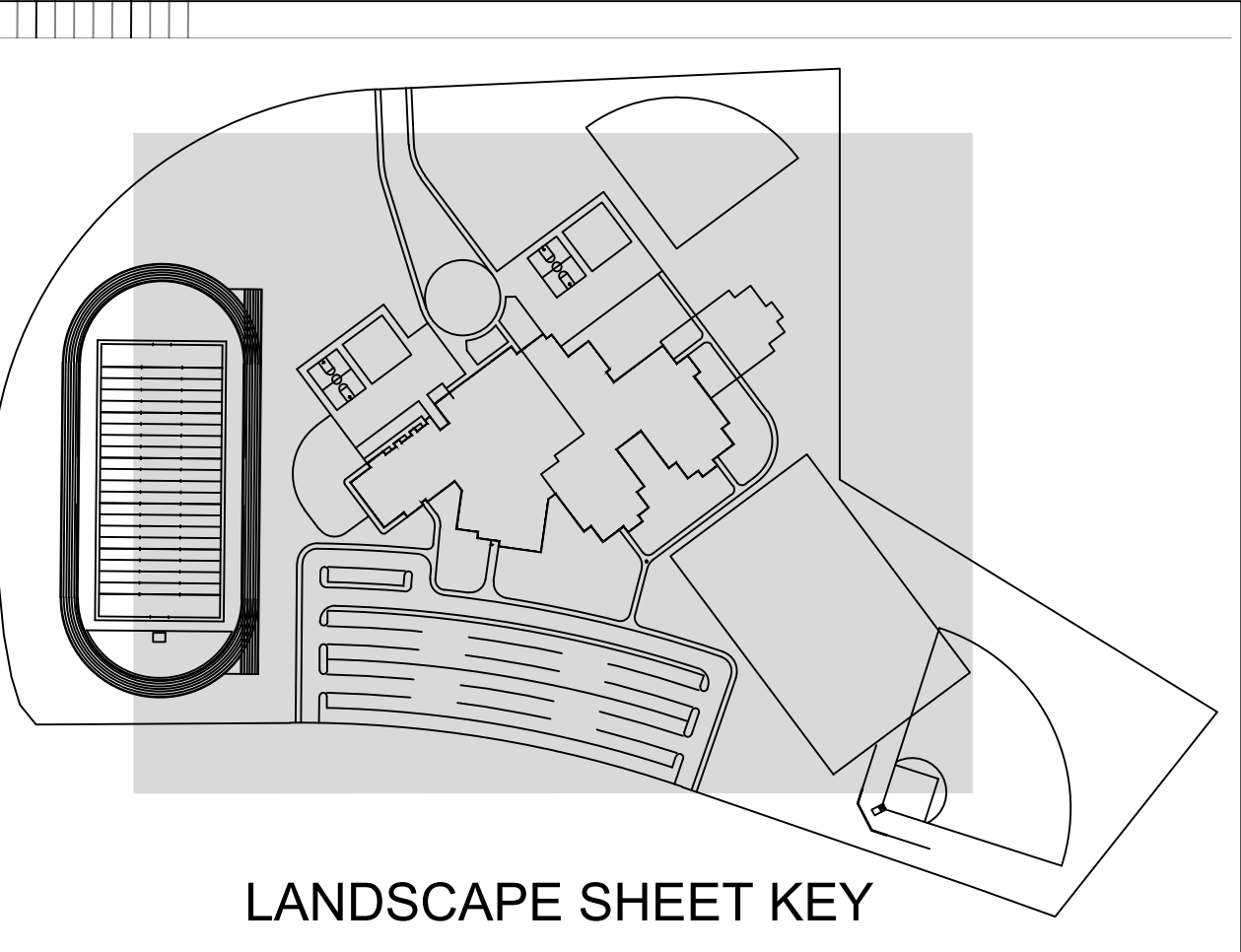
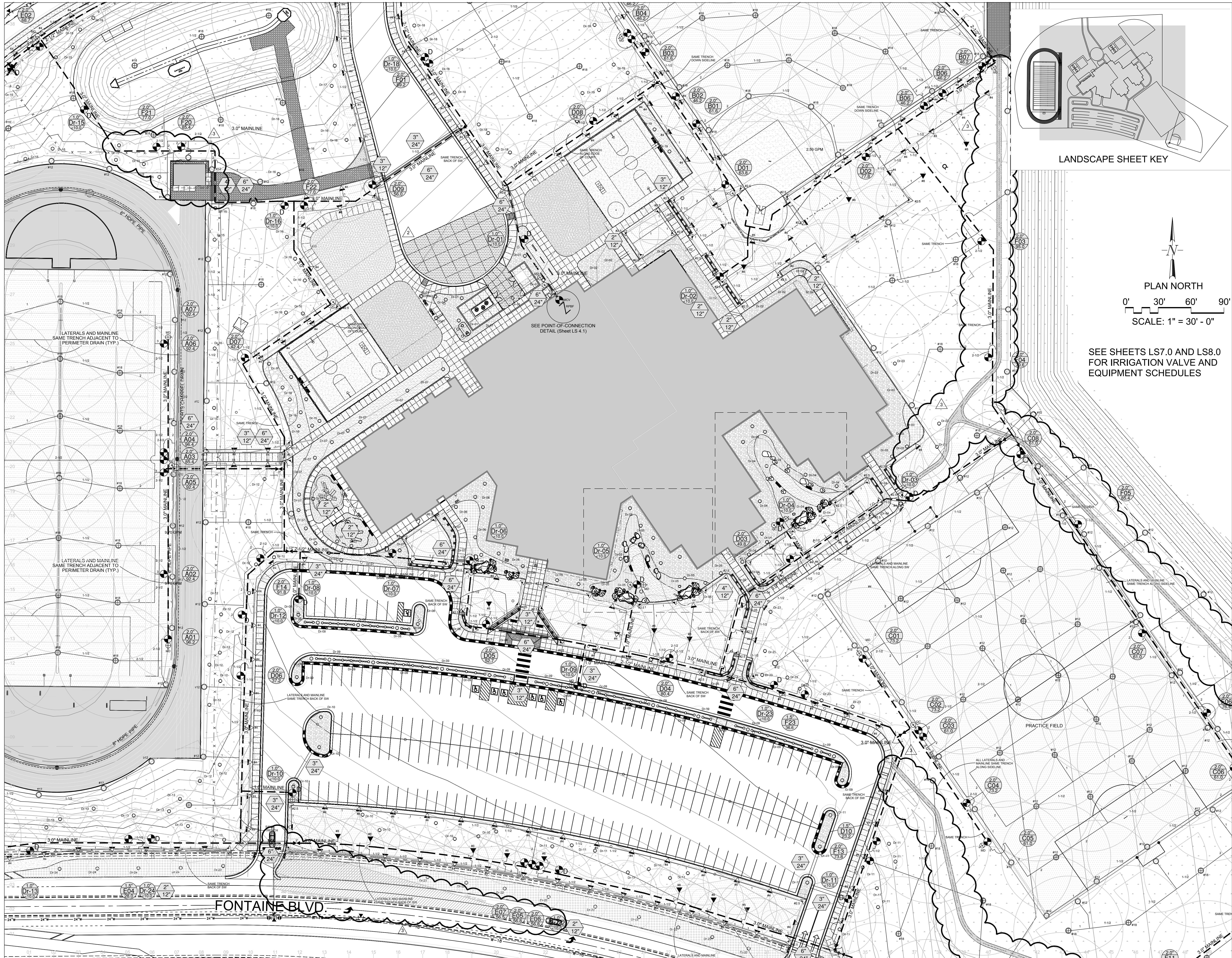












SEE SHEETS LS7.0 AND LS8.0  
FOR IRRIGATION VALVE AND  
EQUIPMENT SCHEDULES

**LKA PARTNERS**  
INCORPORATED  
A Professional Corporation for Architecture and Planning  
430 North Tejon Street Suite 200  
Colorado Springs Colorado 80903  
tel: 719.473.9446 fax: 719.473.9448  
web: www.lkpartners.com



© Copyright 2019 The LKA Partners, Inc. This document and the information contained herein may not be reproduced or  
excepted from without the express written permission of  
The LKA Partners, Inc. Unauthorized copying, disclosure or  
construction use are prohibited by copyright law.

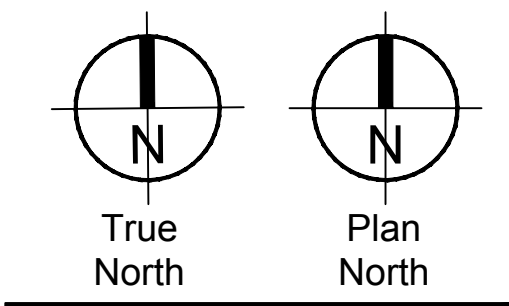
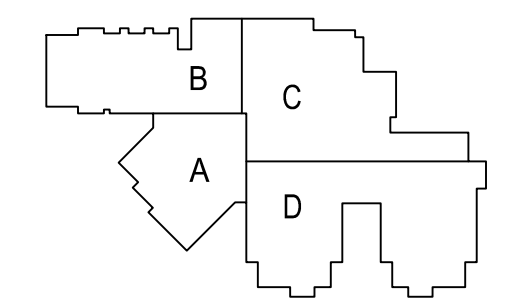
**New Widefield PK-8 School**  
11060 Fontaine Blvd., Widefield, CO  
**Widefield School District 3**  
1820 Main Street  
Colorado Springs, CO 80911



Construction Documents

Drawn:	---
Checked:	---
Issued:	28 February 2019
Revised:	---
	1. CCD-007, October 25, 2018
	2. CCD-011, January 11, 2019
	3. CCD-016, March 1, 2019

Area Key Plan

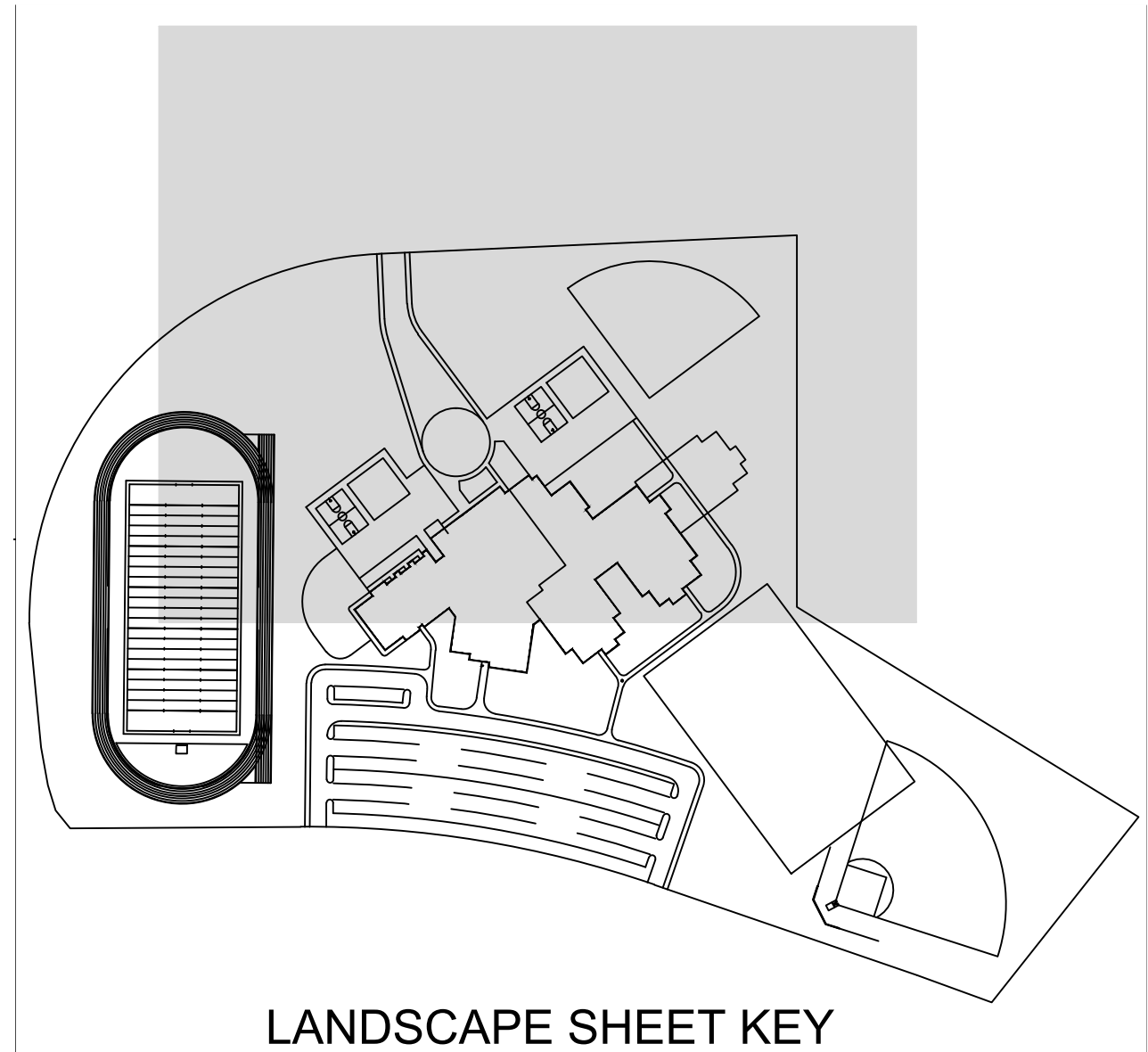


Irrigation Plan

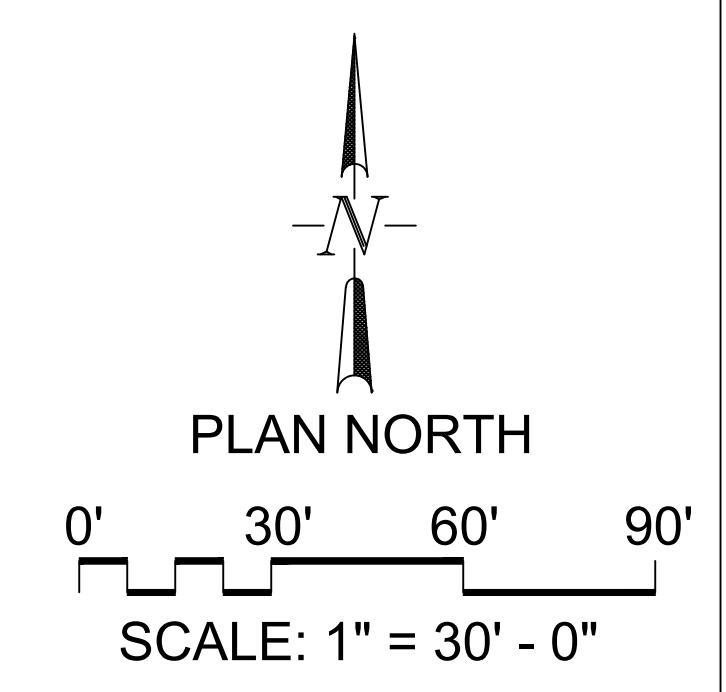
**LS5.0**

Project No. 17-001  
The LKA Partners Incorporated





SEE SHEETS LS7.0 AND LS8.0  
FOR IRRIGATION VALVE AND  
EQUIPMENT SCHEDULES



L K A PARTNERS

INCORPORATED

A Professional Corporation for Architecture and Planning

430 North Tejon Street Suite 200  
Colorado Springs Colorado 80903  
tel: 719.473.8446 fax: 719.473.9448  
web: www.lkapartners.com

William Gunn

ARCHITECT

LANDSCAPE ARCHITECTURE

731 North West Street  
Colorado Springs Colorado  
80903  
www.gunnatd.com  
bill@gunnatd.net

© Copyright 2019 The LKA Partners, Inc. This document and the information contained herein may not be reproduced or excerpted from without the express written permission of The LKA Partners, Inc. Unauthorized copying, disclosure or construction use are prohibited by copyright law.

New Widefield PK-8 School

11060 Fontaine Blvd., Widefield, CO

Widefield School District 3

1820 Main Street  
Colorado Springs, CO 80911

Construction Documents

Drawn: \_\_\_\_\_

Checked: \_\_\_\_\_

Issued: 28 February 2019

Revised: 

1

CCD-007, October 25, 2018

2

CCD-011, January 11, 2019

3

CCD-016, March 1, 2019

Area Key Plan

True North

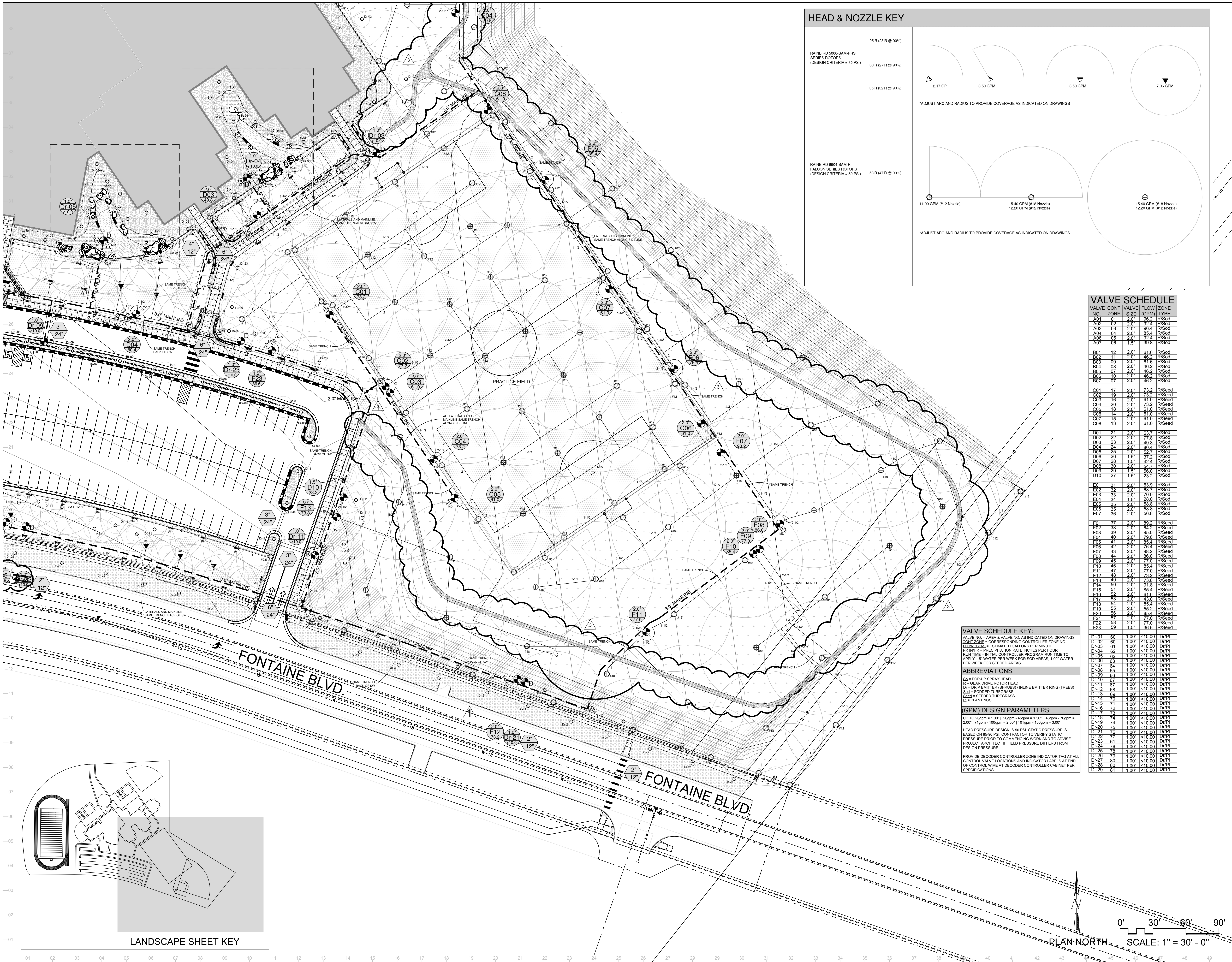
Plan North

Irrigation Plan

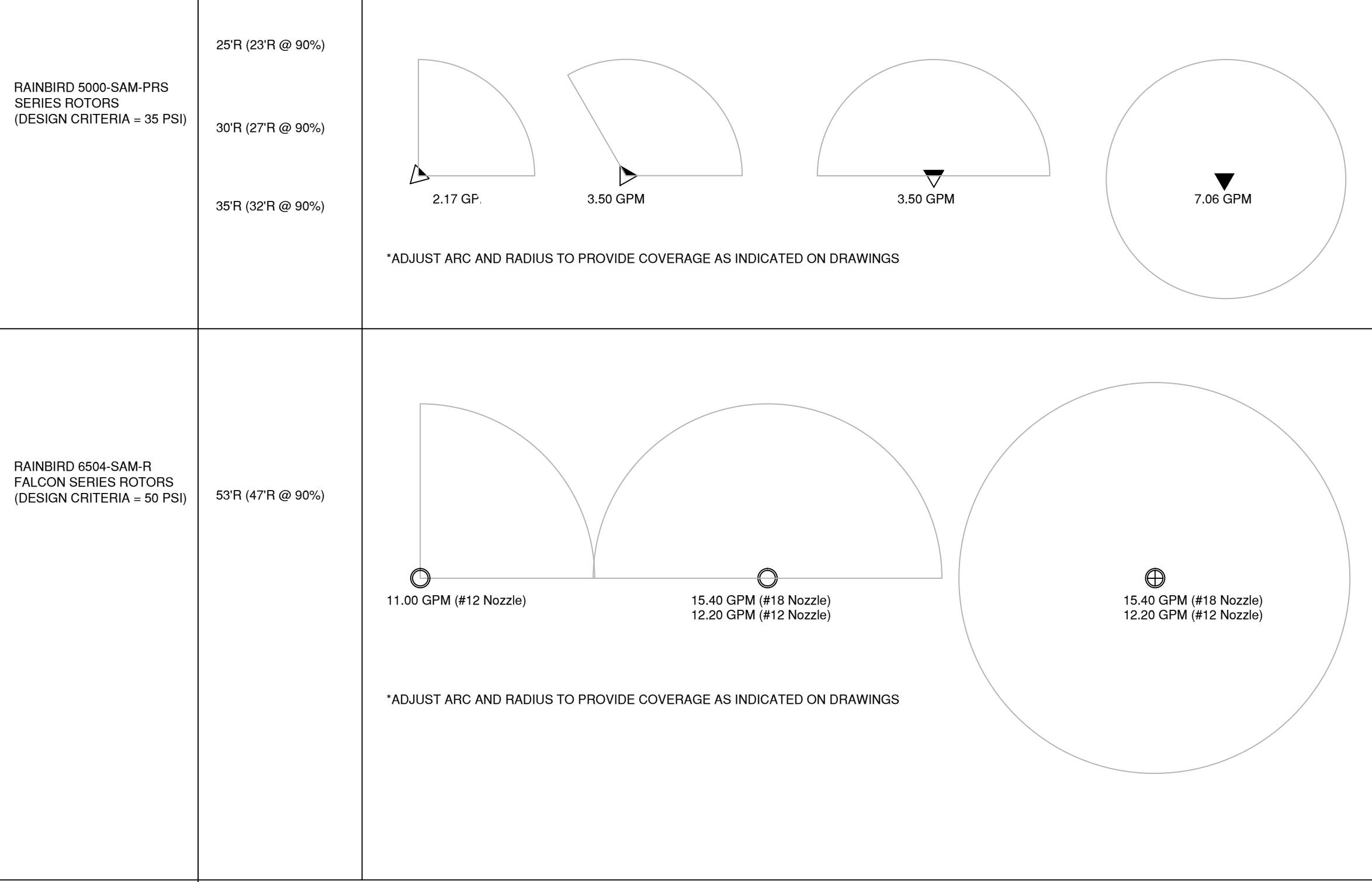
LS6.0

Project No. 17.001  
The LKA Partners Incorporated





HEAD & NOZZLE KEY



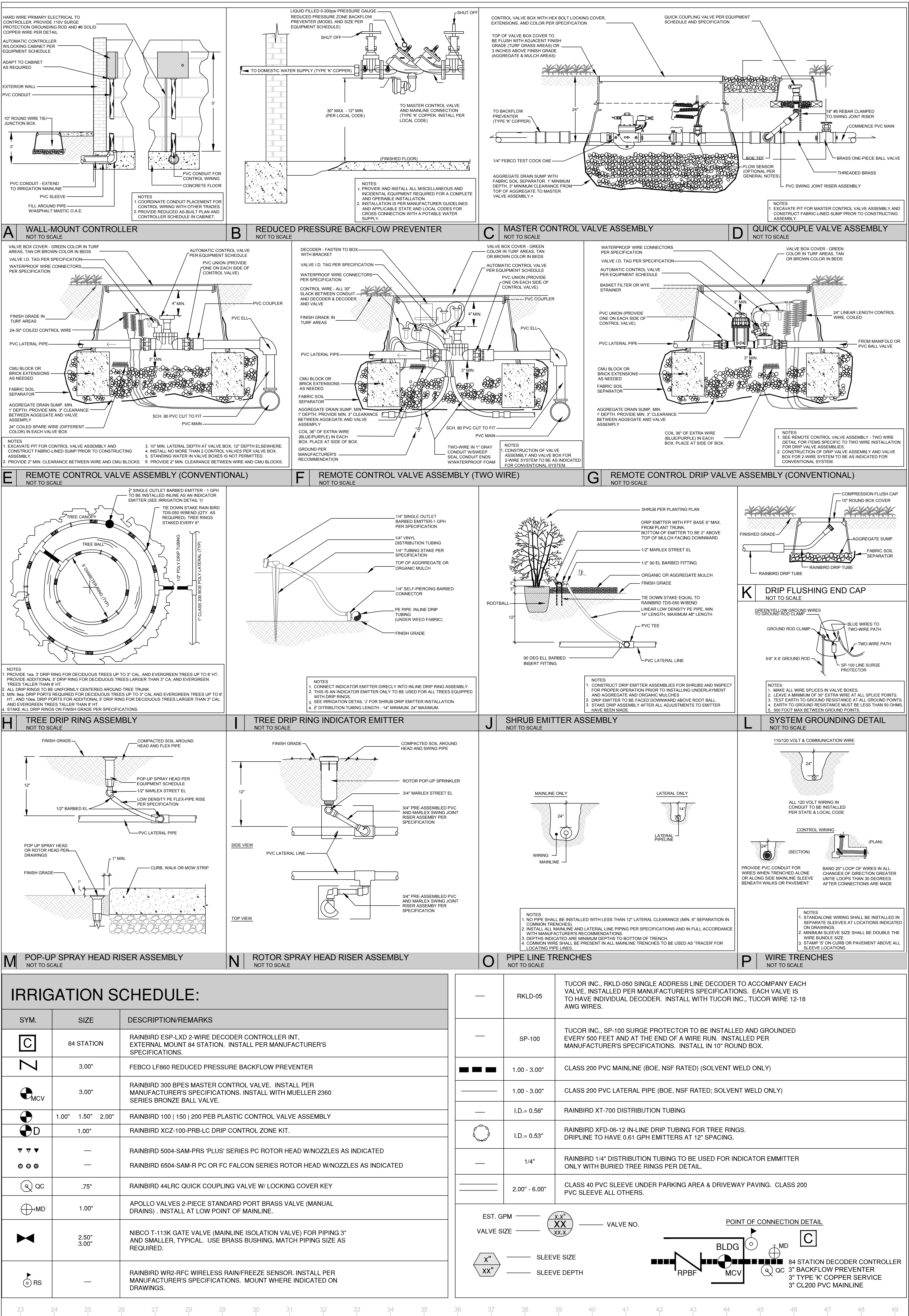
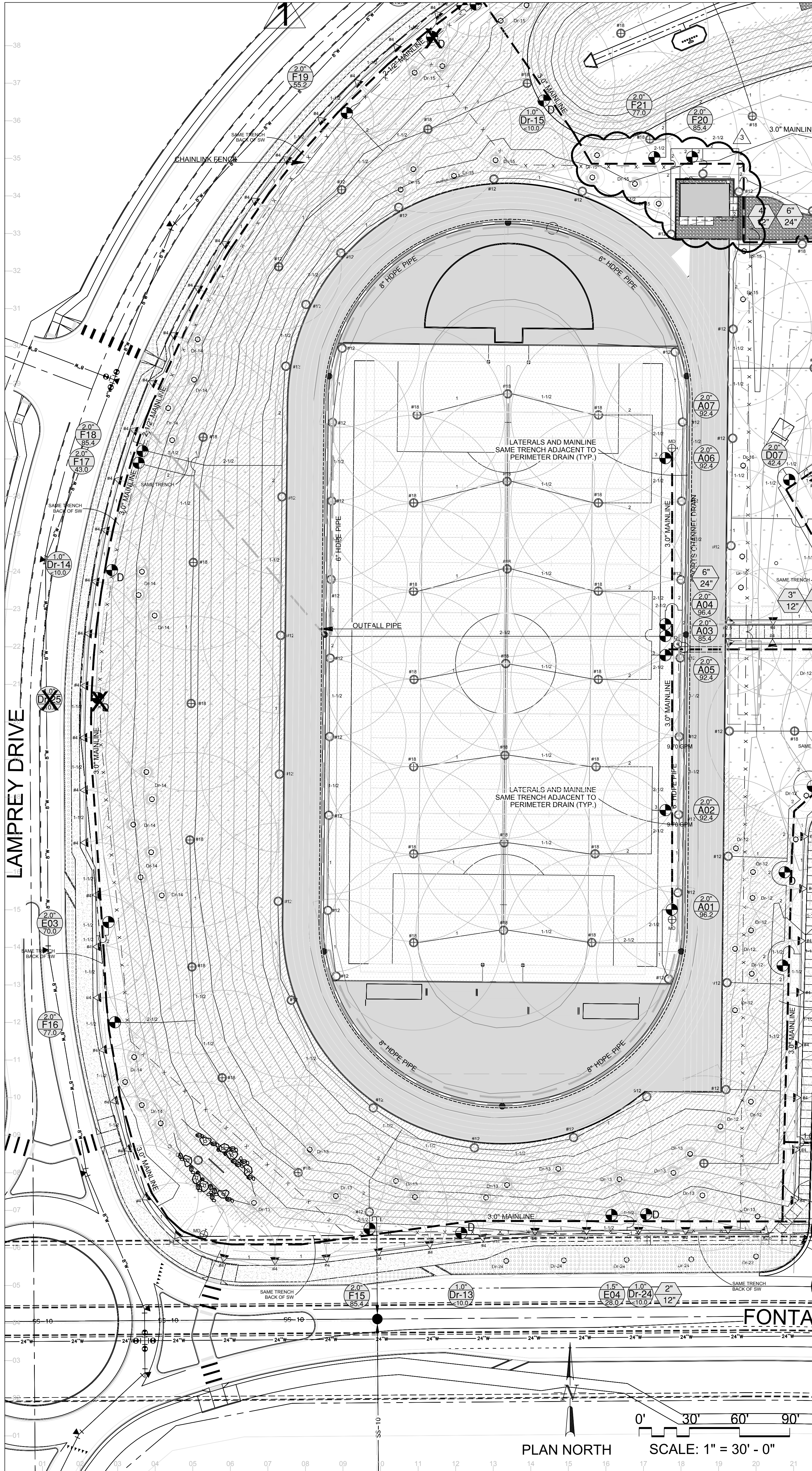
VALVE SCHEDULE

VALVE NO.	CONT. ZONE	VALVE SIZE	FLOW (GPM)	ZONE TYPE
A01	01	2.0"	96.2	R/Sod
A02	02	2.0"	92.4	R/Sod
A03	03	2.0"	96.4	R/Sod
A04	04	2.0"	85.4	R/Sod
A06	05	2.0"	92.4	R/Sod
A07	06	1.5"	39.8	R/Sod
B01	12	2.0"	61.6	R/Sod
B02	11	2.0"	46.2	R/Sod
B03	09	2.0"	61.6	R/Sod
B04	08	2.0"	46.2	R/Sod
B05	07	2.0"	46.2	R/Sod
B06	10	2.0"	46.2	R/Sod
B07	07	2.0"	46.2	R/Sod
C01	17	2.0"	73.2	R/Seed
C02	19	2.0"	73.2	R/Seed
C03	16	2.0"	61.0	R/Seed
C04	20	2.0"	73.2	R/Seed
C05	18	2.0"	61.0	R/Seed
C06	14	2.0"	61.0	R/Seed
C07	15	2.0"	61.0	R/Seed
C08	13	2.0"	61.0	R/Seed
D01	21	2.0"	63.7	R/Sod
D02	22	2.0"	77.8	R/Sod
D03	23	2.0"	49.8	R/Sod
D04	24	2.0"	80.4	R/Sod
D05	25	2.0"	52.7	R/Sod
D06	26	1.5"	37.2	R/Sod
D07	28	1.5"	42.4	R/Sod
D08	29	2.0"	54.7	R/Sod
D09	29	1.5"	56.0	R/Sod
D10	27	1.5"	23.2	R/Sod
E01	31	2.0"	63.9	R/Sod
E02	32	2.0"	68.7	R/Sod
E03	33	2.0"	70.0	R/Sod
E04	34	1.5"	28.0	R/Sod
E05	35	2.0"	58.8	R/Sod
E06	36	2.0"	56.8	R/Sod
F01	37	2.0"	89.2	R/Seed
F02	38	2.0"	64.2	R/Seed
F03	39	2.0"	95.0	R/Seed
F04	40	2.0"	79.6	R/Seed
F05	41	2.0"	85.4	R/Seed
F06	42	2.0"	76.4	R/Seed
F07	43	2.0"	88.2	R/Seed
F08	44	2.0"	86.0	R/Seed
F09	45	2.0"	77.0	R/Seed
F10	46	2.0"	85.4	R/Seed
F11	47	2.0"	77.0	R/Seed
F12	48	2.0"	73.2	R/Seed
F13	49	2.0"	73.8	R/Seed
F14	50	2.0"	91.8	R/Seed
F15	51	2.0"	85.4	R/Seed
F16	52	2.0"	61.6	R/Seed
F17	53	1.0"	43.0	R/Seed
F18	54	2.0"	85.4	R/Seed
F19	55	2.0"	55.2	R/Seed
F20	56	2.0"	85.4	R/Seed
F21	57	2.0"	77.0	R/Seed
F22	58	2.0"	77.0	R/Seed
F23	59	1.5"	36.6	R/Seed
Dr-01	60	1.00"	<10.00	Dr/PI
Dr-02	60	1.00"	<10.00	Dr/PI
Dr-03	61	1.00"	<10.00	Dr/PI
Dr-04	62	1.00"	<10.00	Dr/PI
Dr-05	62	1.00"	<10.00	Dr/PI
Dr-06	63	1.00"	<10.00	Dr/PI
Dr-07	64	1.00"	<10.00	Dr/PI
Dr-08	65	1.00"	<10.00	Dr/PI
Dr-09	66	1.00"	<10.00	Dr/PI
Dr-10	67	1.00"	<10.00	Dr/PI
Dr-11	67	1.00"	<10.00	Dr/PI
Dr-12	68	1.00"	<10.00	Dr/PI
Dr-13	69	1.00"	<10.00	Dr/PI
Dr-14	70	1.00"	<10.00	Dr/PI
Dr-15	71	1.00"	<10.00	Dr/PI
Dr-16	72	1.00"	<10.00	Dr/PI
Dr-17	73	1.00"	<10.00	Dr/PI
Dr-18	74	1.00"	<10.00	Dr/PI
Dr-19	74	1.00"	<10.00	Dr/PI
Dr-20	75	1.00"	<10.00	Dr/PI
Dr-21	76	1.00"	<10.00	Dr/PI
Dr-22	77	1.00"	<10.00	Dr/PI
Dr-23	81	1.00"	<10.00	Dr/PI
Dr-24	78	1.00"	<10.00	Dr/PI
Dr-25	78	1.00"	<10.00	Dr/PI
Dr-26	79	1.00"	<10.00	Dr/PI
Dr-27	80	1.00"	<10.00	Dr/PI
Dr-28	80	1.00"	<10.00	Dr/PI
Dr-29	81	1.00"	<10.00	Dr/PI

VALVE SCHEDULE KEY:

VALVE NO. = AREA & VALVE NO. AS INDICATED ON DRAWINGS  
CONT. ZONE = CORRESPONDING CONTROLLER ZONE NO.  
FLOW (GPM) = ESTIMATED GALLONS PER MINUTE  
EIN/HR = PRECIPITATION RATE INCHES PER HOUR  
RUN TIME = INITIAL CONTROLLER PROGRAM RUN TIME TO  
APPLY 1.0" WATER PER WEEK FOR SOG AREAS. 1.00" WATER  
PER WEEK FOR SEEDED AREAS  
ABBREVIATIONS:  
Sp = POP-UP SPRAY HEAD  
B = GEAR DRIVE ROTOR HEAD  
Dr = DRIP EMITTER (SHRUBS) / INLINE EMITTER (TREES)  
Sog = SOGGED TURFGRASS  
Seed = SEEDED TURFGRASS  
Pl = PLANTINGS  
(GPM) DESIGN PARAMETERS:  
UP TO 20gpm = 1.00" | 20gpm - 45gpm = 1.50" | 45gpm - 70gpm =  
2.00" | 70gpm - 100gpm = 2.50" | 100gpm - 150gpm = 3.00"  
HEAD PRESSURE DESIGN IS 50 PSI. STATIC PRESSURE IS  
BASED ON 85.00 PSI. CONTRACTOR TO VERIFY STATIC  
PRESSURE PRIOR TO COMMENCING WORK AND TO ADVISE  
PROJECT ARCHITECT IF FIELD PRESSURE DIFFERS FROM  
DESIGN PRESSURE.  
PROVIDE DECODER CONTROLLER ZONE INDICATOR TAG AT ALL  
CONTROL VALVE LOCATIONS AND INDICATOR LABELS AT END  
OF CONTROL WIRE AT DECODER CONTROLLER CABINET PER  
SPECIFICATIONS.





**LKA PARTNERS**  
INCORPORATED  
A Professional Corporation for Architecture and Planning  
430 North Tejon Street Suite 200  
Colorado Springs, Colorado 80903  
tel: 719.473.8446 fax: 719.472.9448  
web: [www.lkpartners.com](http://www.lkpartners.com)

LISA L. KAPLAN, ARCHITECT  
LISA L. KAPLAN, ARCHITECT  
731 North West Street  
Colorado Springs, Colorado 80903  
tel: 719.473.8446  
[bill@lkpartners.com](mailto:bill@lkpartners.com)

© Copyright 2019 The LKA Partners, Inc. This document and the information contained herein may not be reproduced or excerpted from without the express written permission of The LKA Partners, Inc. Unauthorized copying, disclosure or construction use are prohibited by copyright law.

**New Widefield PK-8 School**  
11060 Fontaine Blvd., Widefield, CO

**Widefield School District 3**  
1820 Main Street  
Colorado Springs, CO 80911

PRIDE. TRADITION. INNOVATION.

Construction Documents

Drawn: \_\_\_\_\_  
Checked: \_\_\_\_\_  
Issued: 28 February 2019  
Revised: \_\_\_\_\_

CCD-007, October 25, 2018  
CCD-011, January 11, 2019  
CCD-016, March 1, 2019

**Area Key Plan**

True North Plan North

**Irrigation Plan and Details**

**LS8.0**

Project No. 17.001  
The LKA Partners Incorporated