

### Site Plan General Notes

A. SITE PLAN DIMENSIONS ARE TO FACE OF CURB, EDGE OF PAVING, OR FACE OF BUILDING FOUNDATION UNLESS NOTED OTHERWISE.

B. REFERENCE TOPOGRAPHIC SURVEY PREPARED BY DREXEL, BARREL & CO, PROJECT NUMBER 21126-02CSCV, FOR BENCHMARKS, SITE UTILITIES AND OTHER SITE INFORMATION.

C. REFERENCE GEOTECHNICAL ENGINEERING STUDY PREPARED BY TERRACON CONSULTANTS, INC., PROJECT NUMBER 23175112, DATED FEBRUARY 7, 2018, AND REVISED FEBRUARY 20, 2018 FOR SOILS INFORMATION AND RECOMMENDATIONS.

D. REFERENCE CIVIL DRAWINGS FOR EROSION AND SEDIMENT CONTROL PLANS, GRADING, HORIZONTAL CONTROL, STORM DRAINAGE, AND SITE UTILITIES.

E. REMOVE ALL DEMOLITION DEBRIS, IF ANY (BROKEN CONCRETE, ASPHALT, ETC.) FROM SITE. REMOVE EXISTING PLANT MATERIALS, SCRUB, RUBBLE, ETC. DISPOSE OF MATERIAL AT AN APPROVED OFF-SITE LOCATION.

F. PROVIDE CONSTRUCTION FENCING AROUND STAGING AND EXTENT OF GRADING AREAS.

G. RESEED AREAS OUTSIDE OF CONSTRUCTION FENCE BOUNDARY DISTURBED BY CONSTRUCTION ACTIVITIES WITH NATIVE GRASS SEED MIX (SEE LANDSCAPE DRAWINGS).

H. REFER TO CIVIL AND LANDSCAPE DRAWINGS FOR RUNNING TRACK PLANS AND DETAILS, PLACEMENT OF LANDSCAPE MATERIALS, EDGING, WOOD FENCING, AND IRRIGATION.

I. FINISH GRADING SURROUNDING THE EXTERIOR OF THE BUILDING SHALL BE SLOPED TO DRAIN AWAY FROM THE BUILDING IN ALL DIRECTIONS. MINIMUM SLOPE 5% IN FIRST 10' OF UNPAVED AREAS & 2.5% IN FIRST 10' OF PAVED AREAS, U.O.N. ON GRADING PLAN.

XX FOR SITE SPECIFIC NOTE LIST SEE DRAWING SD2.0.

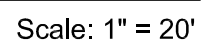
SEE SD2.0 FOR SITE PLAN LEGEND.

See Enlarged Plan 1/SD2.0

### Key Notes List

21	DRILED CONC PER	8.1	HW FRAME
22	BACILL	8.2	HW DOOR
23	FREE-DRAWING	8.3	HW FIXED PANEL
24	GRAVEL BACILL	8.4	HW WINDOW
25	COMPACTED SURF	8.5	HW STOP
26	AGGREGATE BASE	8.6	HW DEFLECTION
27	ASPHALTIC CONC	8.7	HW DETECTION
28	CONCRETE PAVING	8.8	HW CURTAIN
29	CONC WALK	8.9	HW SUB-SILL
30	BRICK PAV	8.10	WOOD FRAME
31	TENNIS COURT	8.11	WOOD DOOR
32	TICK SURFACING	8.12	WOOD FIXED PANEL
33	BASEBALL FIELD	8.13	WOOD WINDOW
34	SURFACING	8.14	WOOD STOP
35	CONC CURB &	8.15	WOOD DETECTION
36	GUTTER	8.16	WOOD CURTAIN
37	LANDSCAPE TIMBER	8.17	WOOD SUB-SILL
38	CHAIN LINK FENCE	8.18	WOOD DOOR
39	BACKSTOP	8.19	WOOD WINDOW
40	MASONRY RETAINING	8.20	WOOD STOP
41	WALL SYSTEM	8.21	WOOD DETECTION
42	3" TREE GRATE	8.22	WOOD CURTAIN
43	2" FILTER FABRIC	8.23	WOOD SUB-SILL
44	2" PERFORATED DRAIN	8.24	WOOD DOOR
45	PIPE	8.25	WOOD WINDOW
46	2" UNPERFORATED	8.26	WOOD STOP
47	DRAIN PIPE	8.27	WOOD DETECTION
48	2" TRENCH DRAIN	8.28	WOOD CURTAIN
49	2" CONC CHANNEL	8.29	WOOD SUB-SILL
50	2" CONC	8.30	WOOD DOOR
51	2" MANHOLE	8.31	WOOD WINDOW
52	2" CONC HEAD WALL	8.32	WOOD STOP
53	2" CONC PIPE FLARED	8.33	WOOD DETECTION
54	END SECTION	8.34	WOOD CURTAIN
55	CONC FOUNDATION	8.35	WOOD SUB-SILL
56	CONC GRACE BEAM	8.36	WOOD DOOR
57	CONC SLAB	8.37	WOOD WINDOW
58	UNDERSLAB GRAVEL	8.38	WOOD STOP
59	RED	8.39	WOOD DETECTION
60	UNDERSLAB VAPOR	8.40	WOOD CURTAIN
61	RETARDER	8.41	WOOD SUB-SILL
62	CONC COLUMN	8.42	WOOD DOOR
63	CONC BEAM	8.43	WOOD WINDOW
64	CONC WALL	8.44	WOOD STOP
65	3" PRECAST CONC COL	8.45	WOOD DETECTION
66	3" PRECAST CONC	8.46	WOOD CURTAIN
67	12" PRECAST CONC	8.47	WOOD SUB-SILL
68	WALL PANEL	8.48	WOOD DOOR
69	13" PRECAST CONC	8.49	WOOD WINDOW
70	DOUBLE TEE	8.50	WOOD STOP
71	CONC SPLASH	8.51	WOOD DETECTION
72	BLOCK	8.52	WOOD CURTAIN
73	1" WEIGHT CONC	8.53	WOOD SUB-SILL
74	1" WEIGHT CONC	8.54	WOOD DOOR
75	REINFORCING BAR	8.55	WOOD WINDOW
76	WELDED WIRE	8.56	WOOD STOP
77	FABRIC	8.57	WOOD DETECTION
78	PREMOULDED JOINT	8.58	WOOD CURTAIN
79	FILLER	8.59	WOOD SUB-SILL
80	3" WATER STOP	8.60	WOOD DOOR
81	3" WATER STOP	8.61	WOOD WINDOW
82	3" WATER STOP	8.62	WOOD STOP
83	3" WATER STOP	8.63	WOOD DETECTION
84	3" WATER STOP	8.64	WOOD CURTAIN
85	3" WATER STOP	8.65	WOOD SUB-SILL
86	3" WATER STOP	8.66	WOOD DOOR
87	3" WATER STOP	8.67	WOOD WINDOW
88	3" WATER STOP	8.68	WOOD STOP
89	3" WATER STOP	8.69	WOOD DETECTION
90	3" WATER STOP	8.70	WOOD CURTAIN
91	3" WATER STOP	8.71	WOOD SUB-SILL
92	3" WATER STOP	8.72	WOOD DOOR
93	3" WATER STOP	8.73	WOOD WINDOW
94	3" WATER STOP	8.74	WOOD STOP
95	3" WATER STOP	8.75	WOOD DETECTION
96	3" WATER STOP	8.76	WOOD CURTAIN
97	3" WATER STOP	8.77	WOOD SUB-SILL
98	3" WATER STOP	8.78	WOOD DOOR
99	3" WATER STOP	8.79	WOOD WINDOW
100	3" WATER STOP	8.80	WOOD STOP
101	3" WATER STOP	8.81	WOOD DETECTION
102	3" WATER STOP	8.82	WOOD CURTAIN
103	3" WATER STOP	8.83	WOOD SUB-SILL
104	3" WATER STOP	8.84	WOOD DOOR
105	3" WATER STOP	8.85	WOOD WINDOW
106	3" WATER STOP	8.86	WOOD STOP
107	3" WATER STOP	8.87	WOOD DETECTION
108	3" WATER STOP	8.88	WOOD CURTAIN
109	3" WATER STOP	8.89	WOOD SUB-SILL
110	3" WATER STOP	8.90	WOOD DOOR
111	3" WATER STOP	8.91	WOOD WINDOW
112	3" WATER STOP	8.92	WOOD STOP
113	3" WATER STOP	8.93	WOOD DETECTION
114	3" WATER STOP	8.94	WOOD CURTAIN
115	3" WATER STOP	8.95	WOOD SUB-SILL
116	3" WATER STOP	8.96	WOOD DOOR
117	3" WATER STOP	8.97	WOOD WINDOW
118	3" WATER STOP	8.98	WOOD STOP
119	3" WATER STOP	8.99	WOOD DETECTION
120	3" WATER STOP	9.00	WOOD CURTAIN
121	3" WATER STOP	9.01	WOOD SUB-SILL
122	3" WATER STOP	9.02	WOOD DOOR
123	3" WATER STOP	9.03	WOOD WINDOW
124	3" WATER STOP	9.04	WOOD STOP
125	3" WATER STOP	9.05	WOOD DETECTION
126	3" WATER STOP	9.06	WOOD CURTAIN
127	3" WATER STOP	9.07	WOOD SUB-SILL
128	3" WATER STOP	9.08	WOOD DOOR
129	3" WATER STOP	9.09	WOOD WINDOW
130	3" WATER STOP	9.10	WOOD STOP
131	3" WATER STOP	9.11	WOOD DETECTION
132	3" WATER STOP	9.12	WOOD CURTAIN
133	3" WATER STOP	9.13	WOOD SUB-SILL
134	3" WATER STOP	9.14	WOOD DOOR
135	3" WATER STOP	9.15	WOOD WINDOW
136	3" WATER STOP	9.16	WOOD STOP
137	3" WATER STOP	9.17	WOOD DETECTION
138	3" WATER STOP	9.18	WOOD CURTAIN
139	3" WATER STOP	9.19	WOOD SUB-SILL
140	3" WATER STOP	9.20	WOOD DOOR
141	3" WATER STOP	9.21	WOOD WINDOW
142	3" WATER STOP	9.22	WOOD STOP
143	3" WATER STOP	9.23	WOOD DETECTION
144	3" WATER STOP	9.24	WOOD CURTAIN
145	3" WATER STOP	9.25	WOOD SUB-SILL
146	3" WATER STOP	9.26	WOOD DOOR
147	3" WATER STOP	9.27	WOOD WINDOW
148	3" WATER STOP	9.28	WOOD STOP
149	3" WATER STOP	9.29	WOOD DETECTION
150	3" WATER STOP	9.30	WOOD CURTAIN
151	3" WATER STOP	9.31	WOOD SUB-SILL
152	3" WATER STOP	9.32	WOOD DOOR
153	3" WATER STOP	9.33	WOOD WINDOW
154	3" WATER STOP	9.34	WOOD STOP
155	3" WATER STOP	9.35	WOOD DETECTION
156	3" WATER STOP	9.36	WOOD CURTAIN
157	3" WATER STOP	9.37	WOOD SUB-SILL
158	3" WATER STOP	9.38	WOOD DOOR
159	3" WATER STOP	9.39	WOOD WINDOW
160	3" WATER STOP	9.40	WOOD STOP
161	3" WATER STOP	9.41	WOOD DETECTION
162	3" WATER STOP	9.42	WOOD CURTAIN
163	3" WATER STOP	9.43	WOOD SUB-SILL
164	3" WATER STOP	9.44	WOOD DOOR
165	3" WATER STOP	9.45	WOOD WINDOW
166	3" WATER STOP	9.46	WOOD STOP
167	3" WATER STOP	9.47	WOOD DETECTION
168	3" WATER STOP	9.48	WOOD CURTAIN
169	3" WATER STOP	9.49	WOOD SUB-SILL
170	3" WATER STOP	9.50	WOOD DOOR
171	3" WATER STOP	9.51	WOOD WINDOW
172	3" WATER STOP	9.52	WOOD STOP
173	3" WATER STOP	9.53	WOOD DETECTION
174	3" WATER STOP	9.54	WOOD CURTAIN
175	3" WATER STOP	9.55	WOOD SUB-SILL
176	3" WATER STOP	9.56	WOOD DOOR
177	3" WATER STOP	9.57	WOOD WINDOW
178	3" WATER STOP	9.58	WOOD STOP
179	3" WATER STOP	9.59	WOOD DETECTION
180	3" WATER STOP	9.60	WOOD CURTAIN
181	3" WATER STOP	9.61	WOOD SUB-SILL
182	3" WATER STOP	9.62	WOOD DOOR
183	3" WATER STOP	9.63	WOOD WINDOW
184	3" WATER STOP	9.64	WOOD STOP
185	3" WATER STOP	9.65	WOOD DETECTION
186	3" WATER STOP	9.66	WOOD CURTAIN
187	3" WATER STOP	9.67	WOOD SUB-SILL
188	3" WATER STOP	9.68	WOOD DOOR
189	3" WATER STOP	9.69	WOOD WINDOW
190	3" WATER STOP	9.70	WOOD STOP
191	3" WATER STOP	9.71	WOOD DETECTION
192	3" WATER STOP	9.72	WOOD CURTAIN
193	3" WATER STOP	9.73	WOOD SUB-SILL
194	3" WATER STOP	9.74	WOOD DOOR
195	3" WATER STOP	9.75	WOOD WINDOW
196	3" WATER STOP	9.76	WOOD STOP
197	3" WATER STOP	9.77	WOOD DETECTION
198	3" WATER STOP	9.78	WOOD CURTAIN
199	3" WATER STOP	9.79	WOOD SUB-SILL
200	3" WATER STOP	9.80	WOOD DOOR
201	3" WATER STOP	9.81	WOOD WINDOW
202	3" WATER STOP	9.82	WOOD STOP
203	3" WATER STOP	9.83	WOOD DETECTION
204	3" WATER STOP	9.84	WOOD CURTAIN
205	3" WATER STOP	9.85	WOOD SUB-SILL
206	3" WATER STOP	9.86	WOOD DOOR
207	3" WATER STOP	9.87	WOOD WINDOW
208	3" WATER STOP	9.88	WOOD STOP
209	3" WATER STOP	9.89	WOOD DETECTION
210	3" WATER STOP	9.90	WOOD CURTAIN
211	3" WATER STOP	9.91	WOOD SUB-SILL
212	3" WATER STOP	9.92	WOOD DOOR
213	3" WATER STOP	9.93	WOOD WINDOW
214	3" WATER STOP	9.94	WOOD STOP
215	3" WATER STOP	9.95	WOOD DETECTION
216	3" WATER STOP	9.96	WOOD CURTAIN
217	3" WATER STOP	9.97	WOOD SUB-SILL
218	3" WATER STOP	9.98	WOOD DOOR
219	3" WATER STOP	9.99	WOOD WINDOW
220	3" WATER STOP	10.00	WOOD STOP



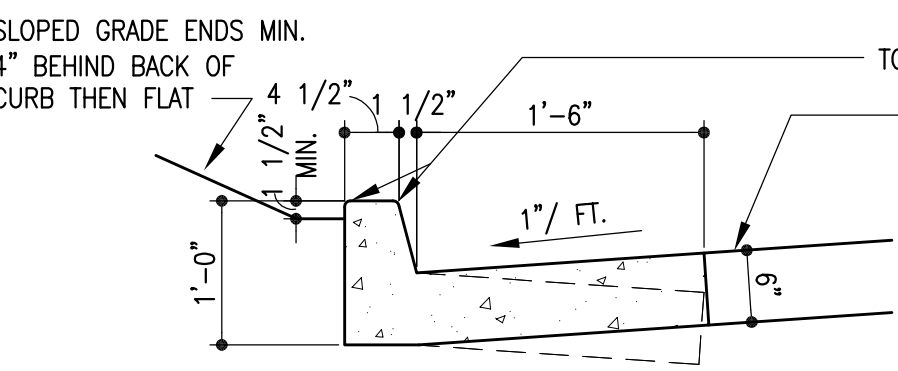


OR	INLET	STORM SEWER INLET
	AD	AREA DRAIN
	EJ	EXPANSION JOINT W/ CAULK
(IONS).	SJ	SCORE JOINT-- AS INDICATED
	IE	INVERT ELEVATION
(IONS).	FL	FLOW LINE
	HP	HIGH POINT
	LP	LOW POINT
(IONS).	PC	POINT OF CURVATURE
	PT	POINT OF TANGENCY
	CC	CENTER OF CURVATURE
(IONS).	PCR	POINT OF CURB RADIUS (RETURN
	A)	ANGLE POINT
	TC	TOP OF CURB
	TP	TOP OF PAVING (CONC / ASPHALT)
	TD	TOP OF GRADE (DRAIN / INLET)
	WP	WORKING POINT
	C	CENTER LINE
	TO	TOP OF *-----*
	TOW	TOP OF WALL
	UNO	UNLESS NOTED OTHERWISE

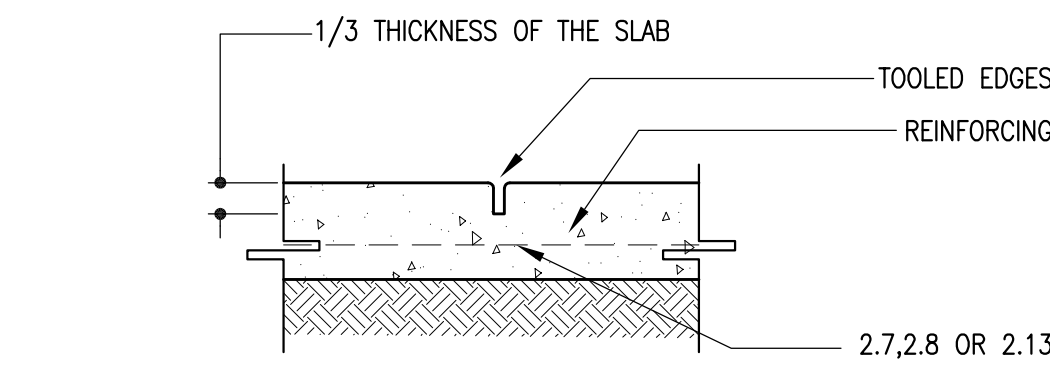


## Curb and Gutter General Notes

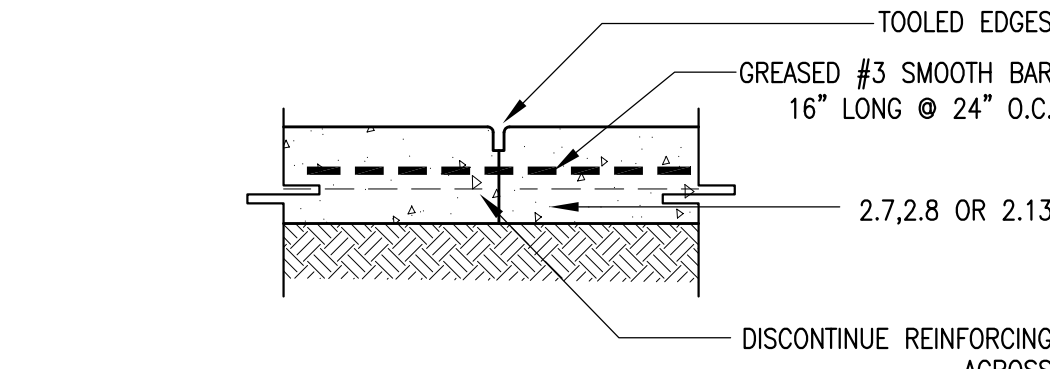
1. PROVIDE EJ AT EACH END OF CURB AND DIRECTIONAL CHANGES
2. CATCH OR SPILL GUTTER TO MATCH THE SLOPE OF ADJACENT PAVEMENT



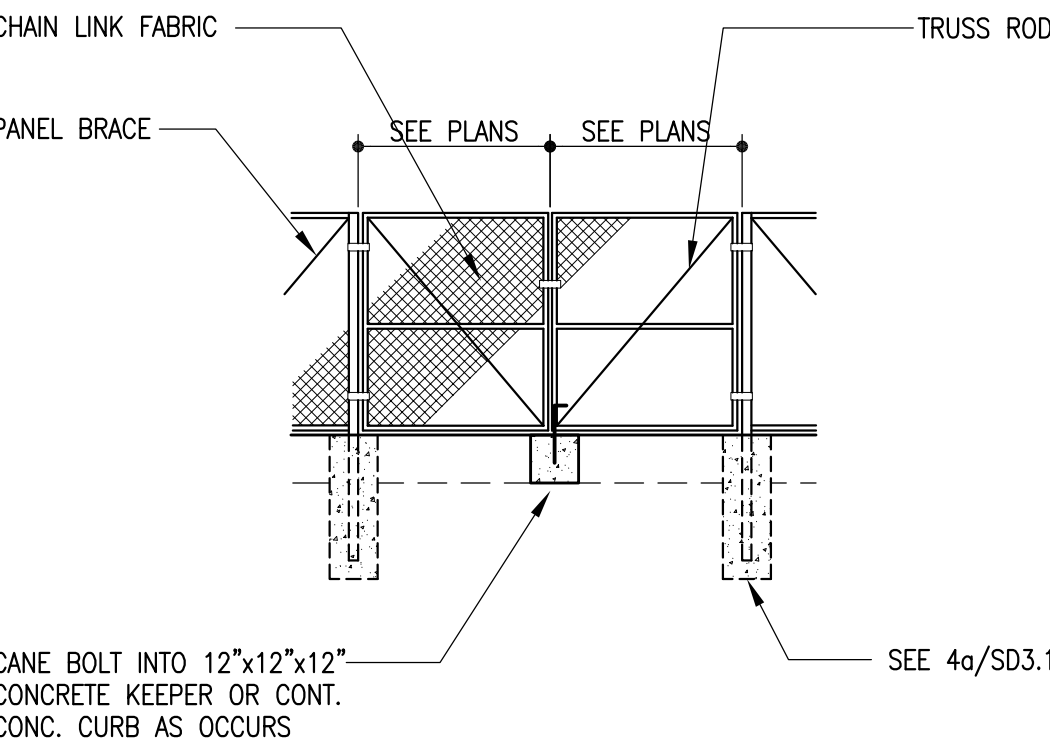
30a Typ Catch / Spill Curb  
Scale: 3/4" = 1'-0"



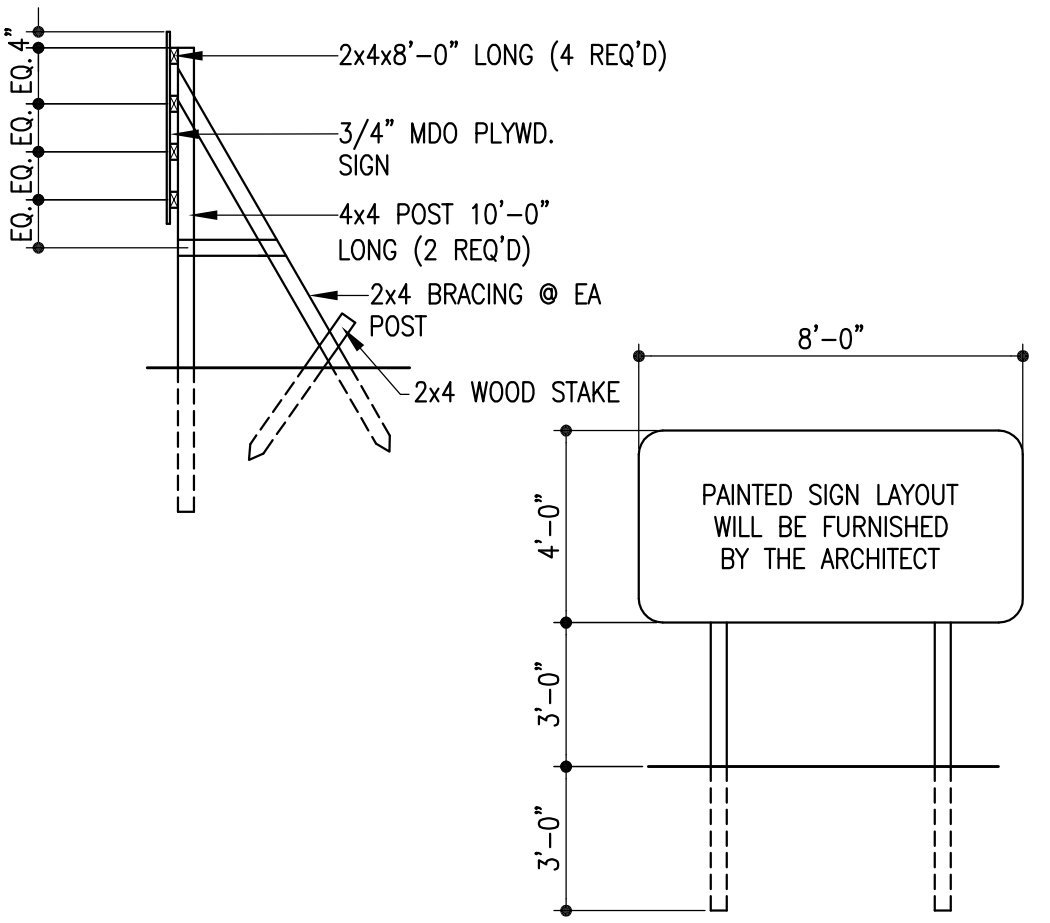
29b Typ Contraction Joint  
Scale: 1 1/2" = 1'-0"



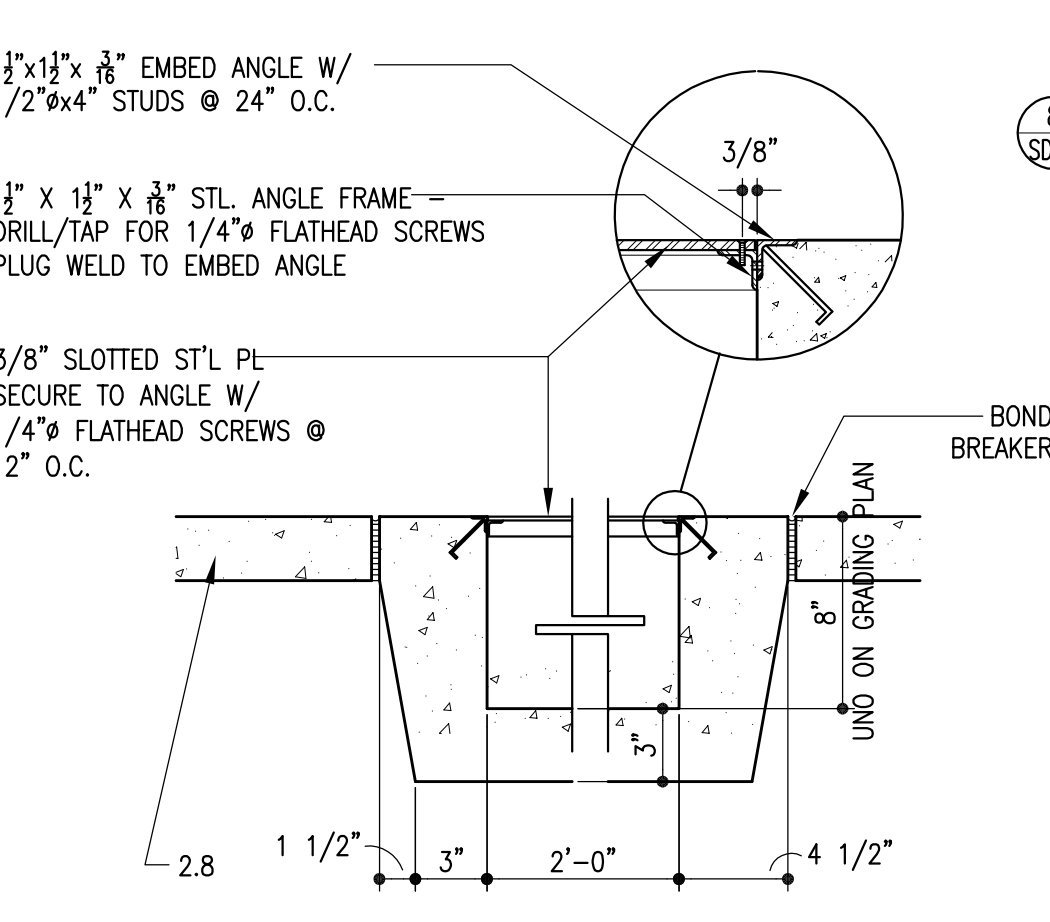
29a Typ Construction Joint  
Scale: 1 1/2" = 1'-0"



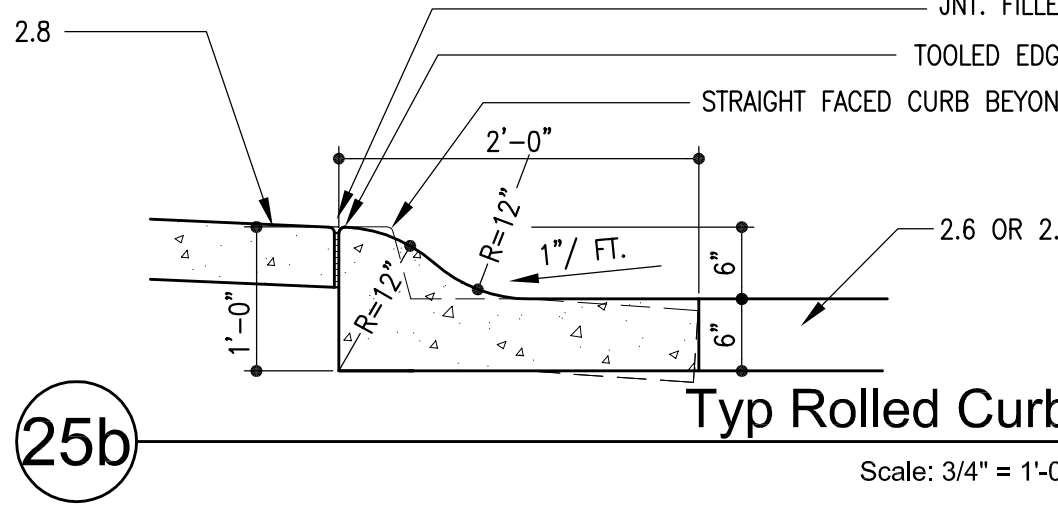
28 Detail  
Scale: 1/4" = 1'-0"



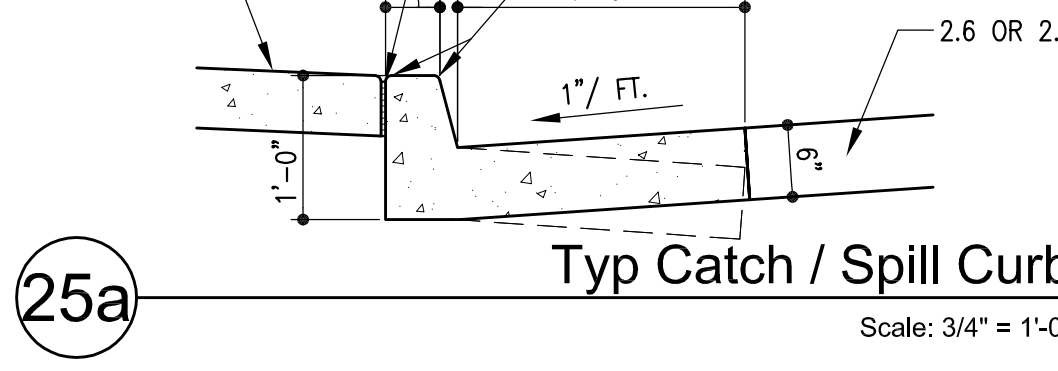
27 Project Sign Detail  
Scale: 1/4" = 1'-0"



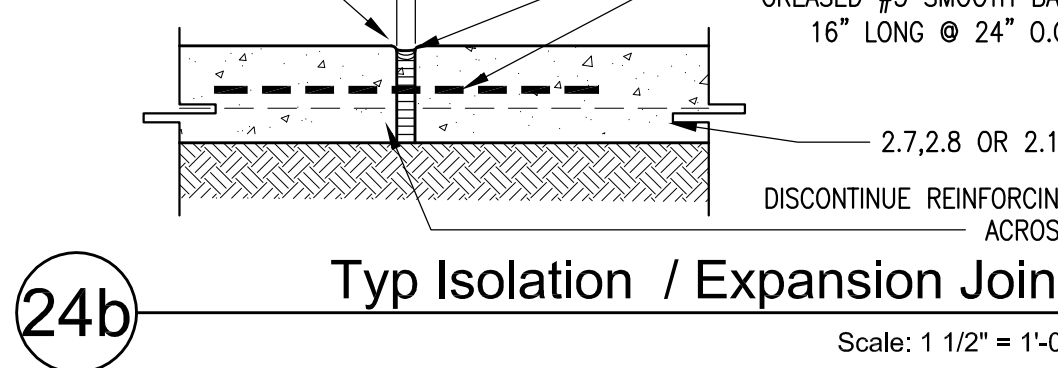
26 Sidewalk Chase Dtl  
Scale: 1-1/2" = 1'-0"



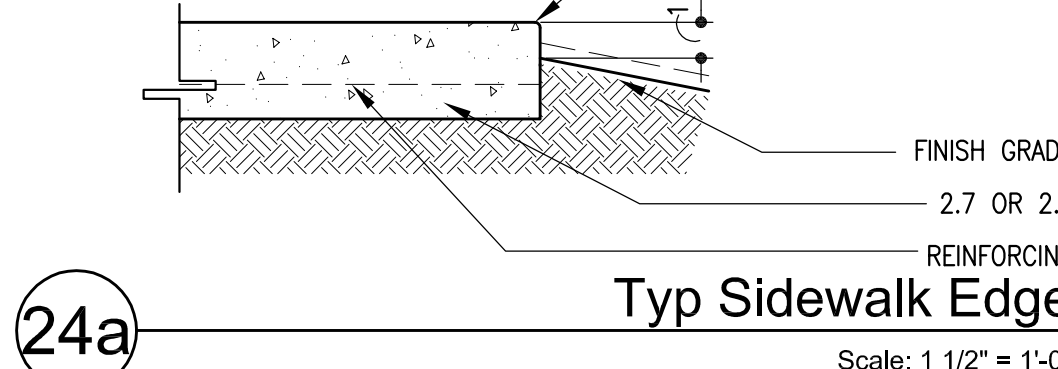
25b Typ Rolled Curb  
Scale: 3/4" = 1'-0"



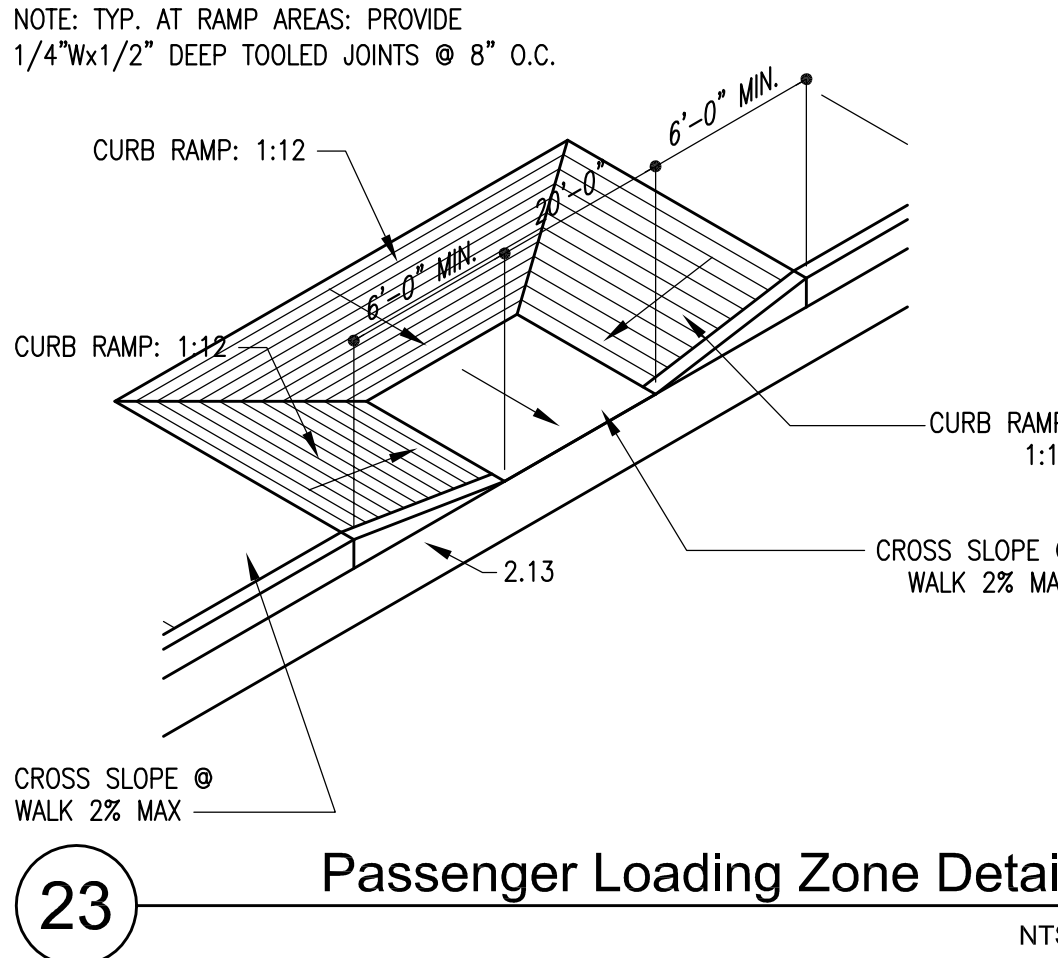
25a Typ Catch / Spill Curb  
Scale: 3/4" = 1'-0"



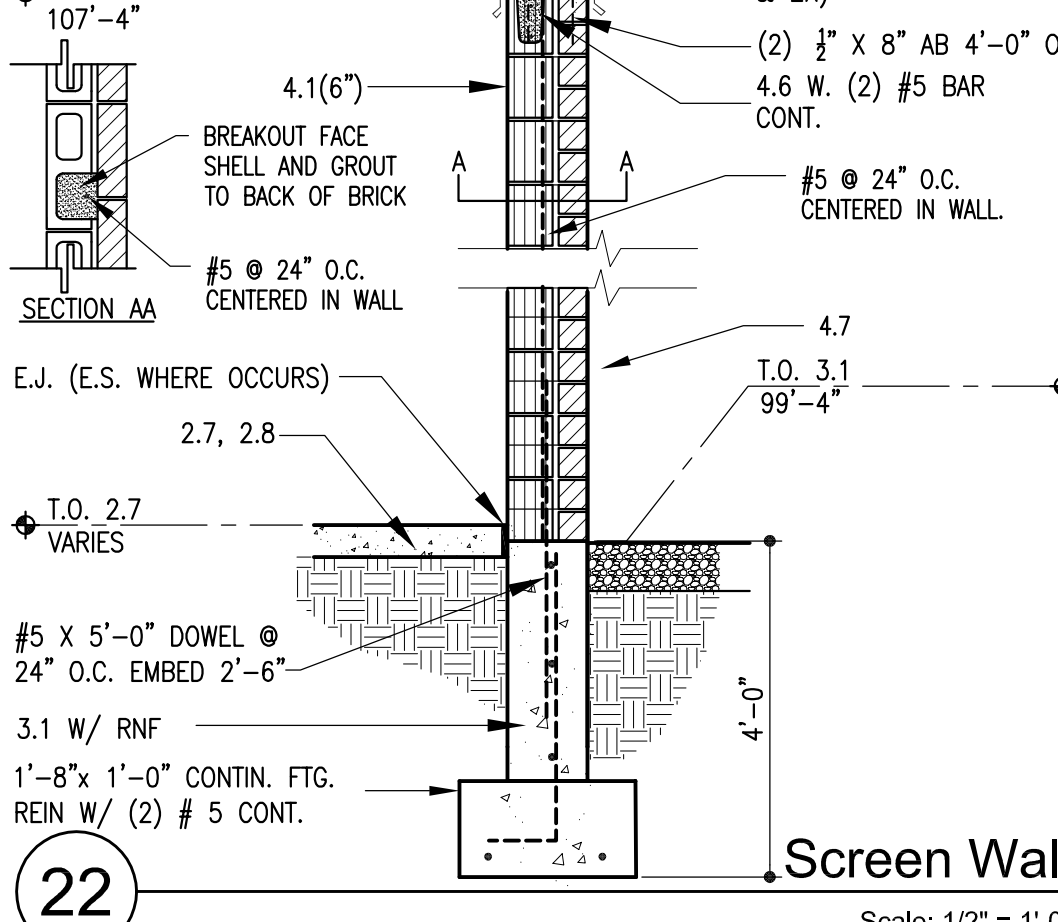
24b Typ Isolation / Expansion Joint  
Scale: 1 1/2" = 1'-0"



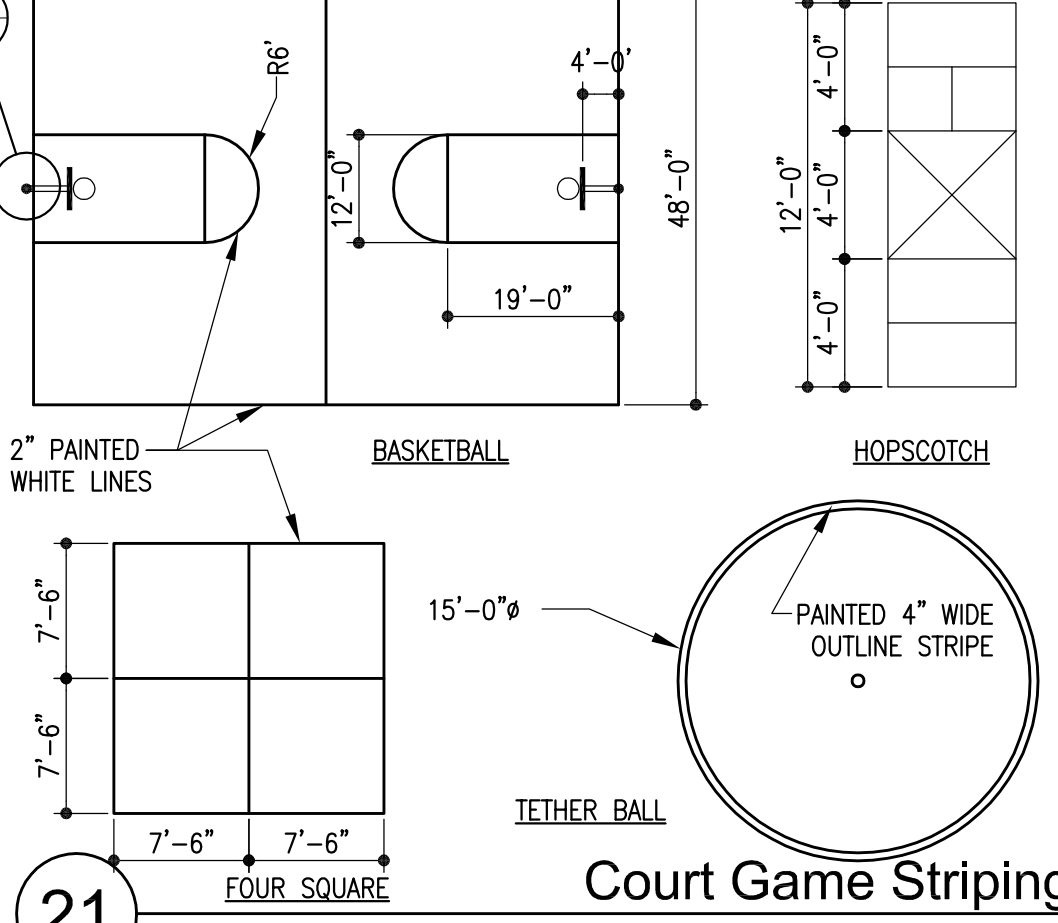
24a Typ Sidewalk Edge  
Scale: 1 1/2" = 1'-0"



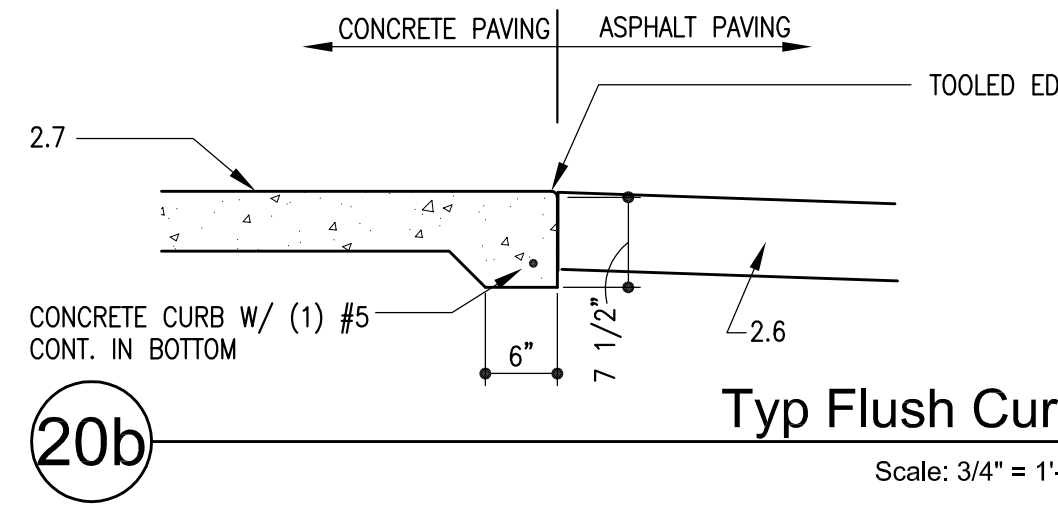
23 Passenger Loading Zone Detail  
Scale: 1/4" = 1'-0"



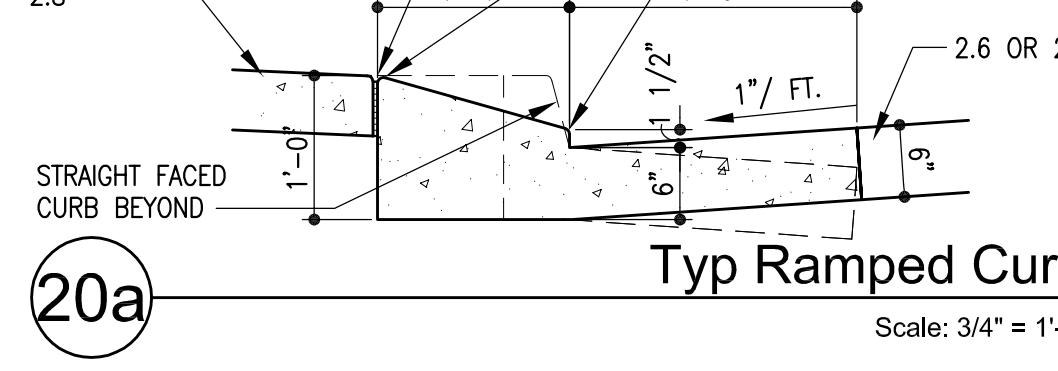
22 Screen Wall  
Scale: 1/2" = 1'-0"



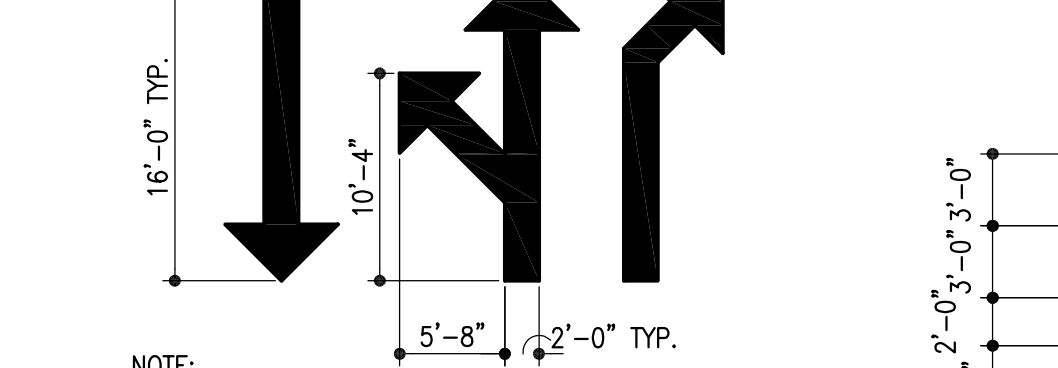
21 Court Game Striping  
No Scale



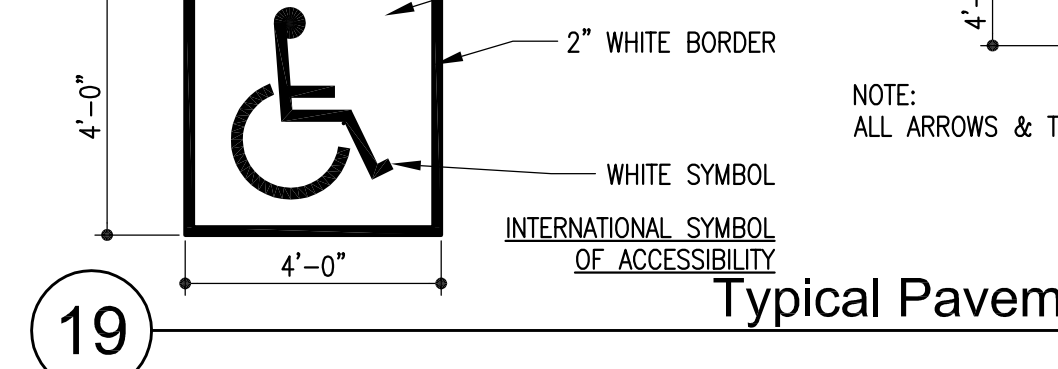
20b Typ Flush Curb  
Scale: 3/4" = 1'-0"



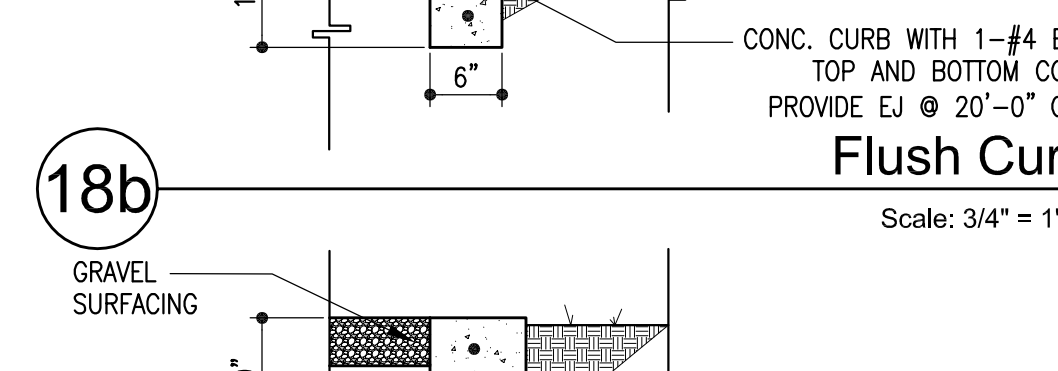
20a Typ Ramped Curb  
Scale: 3/4" = 1'-0"



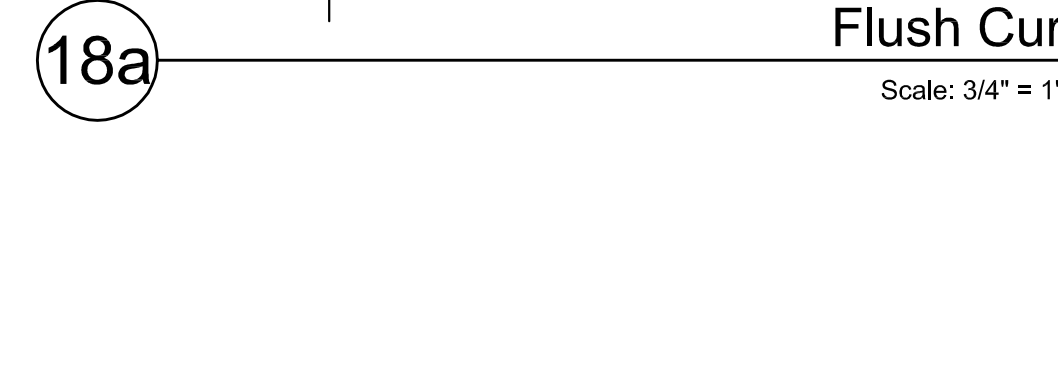
19 Typical Pavement Markings  
No Scale



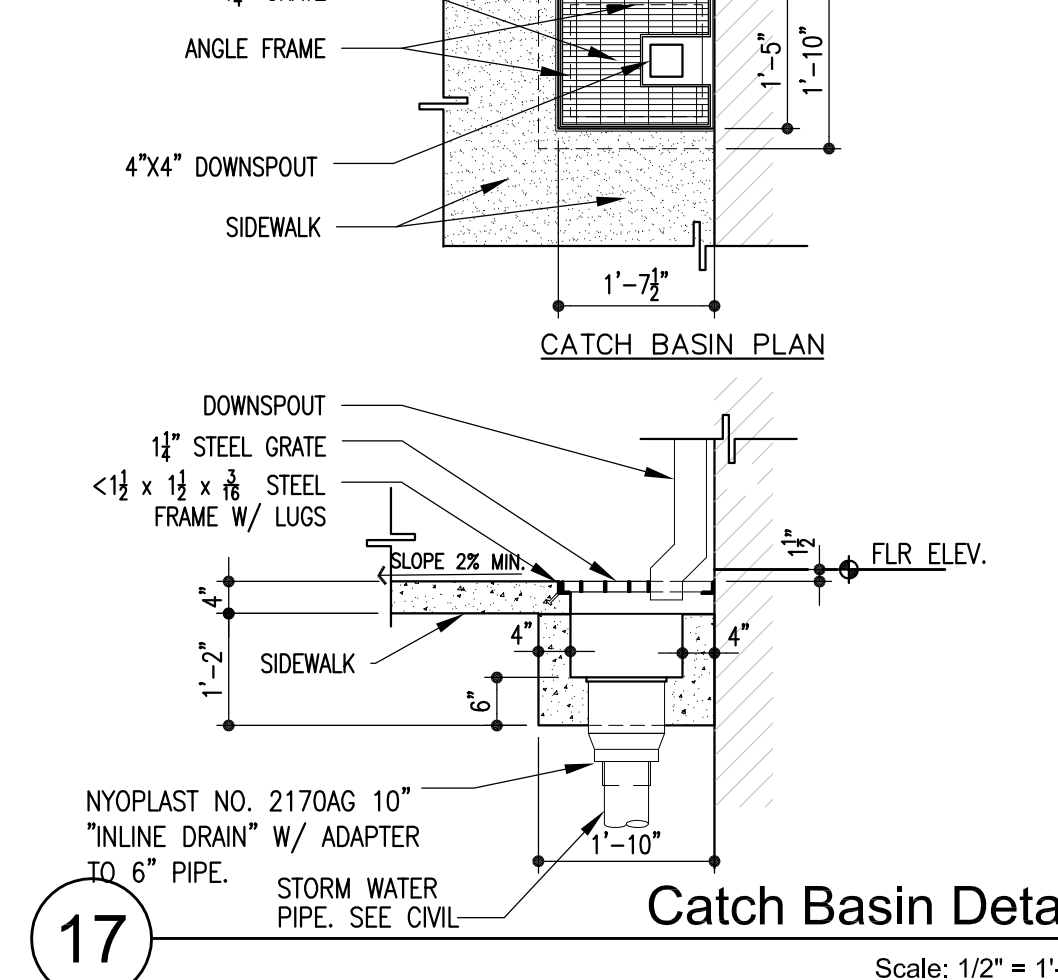
18b Flush Curb  
Scale: 3/4" = 1'-0"



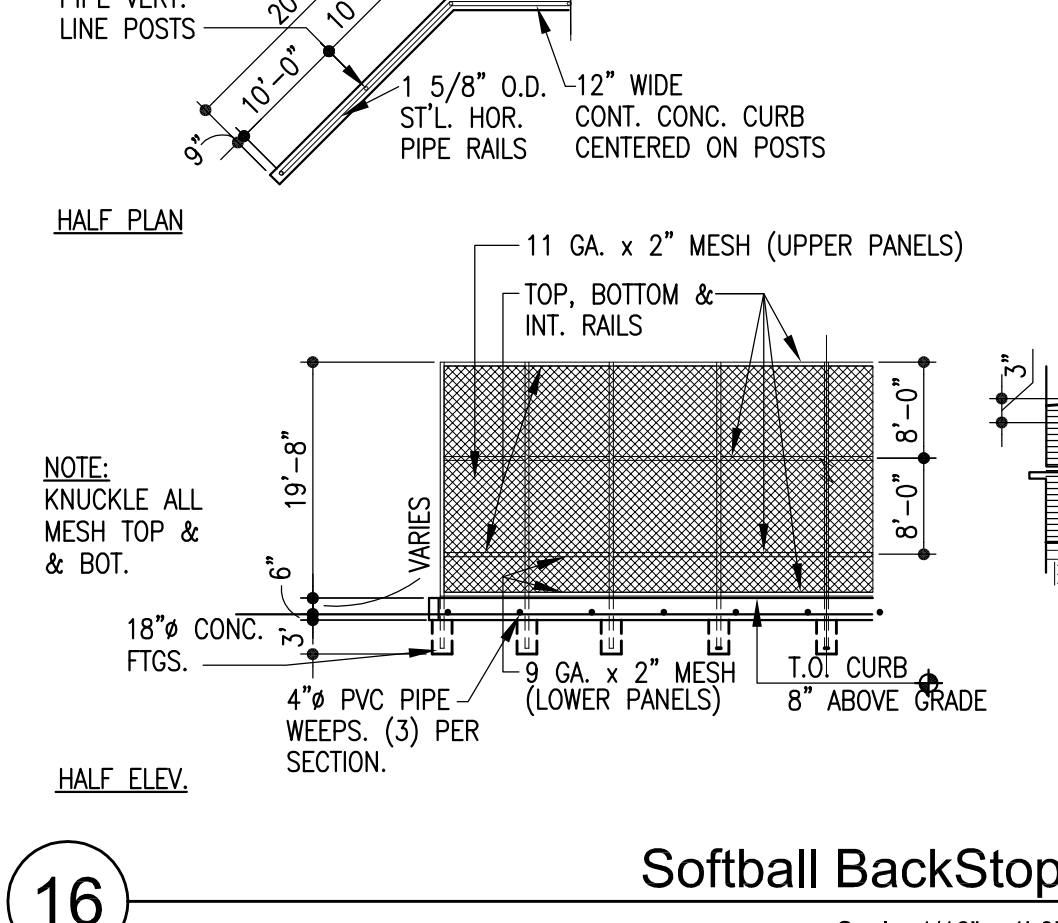
18a Flush Curb  
Scale: 3/4" = 1'-0"



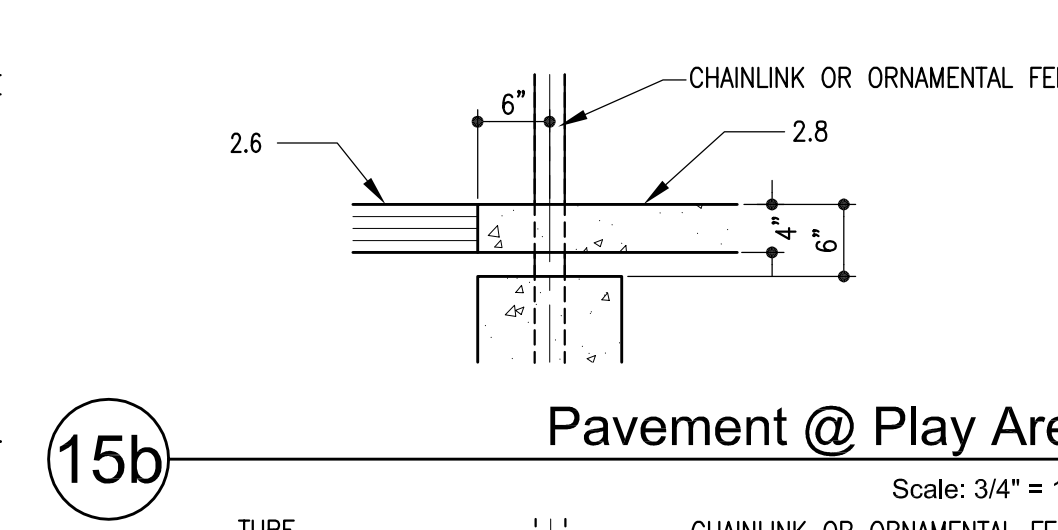
17 Catch Basin Detail  
Scale: 1/2" = 1'-0"



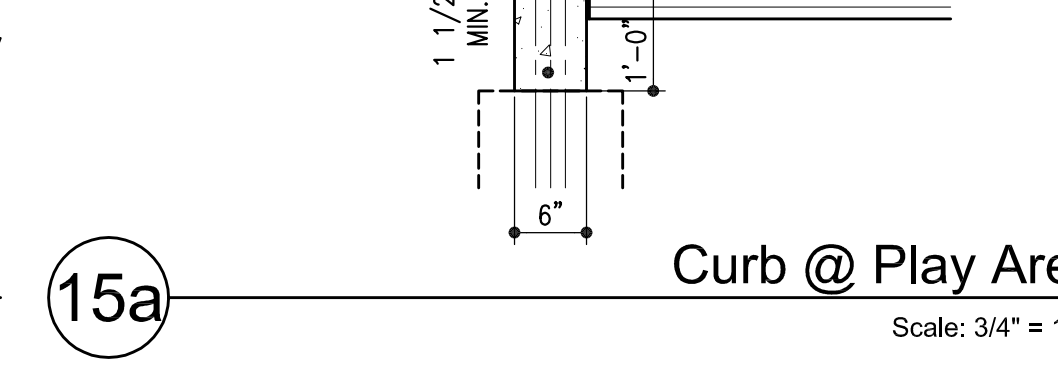
12 Conc. Catch Basin  
Scale: 1/2" = 1'-0"



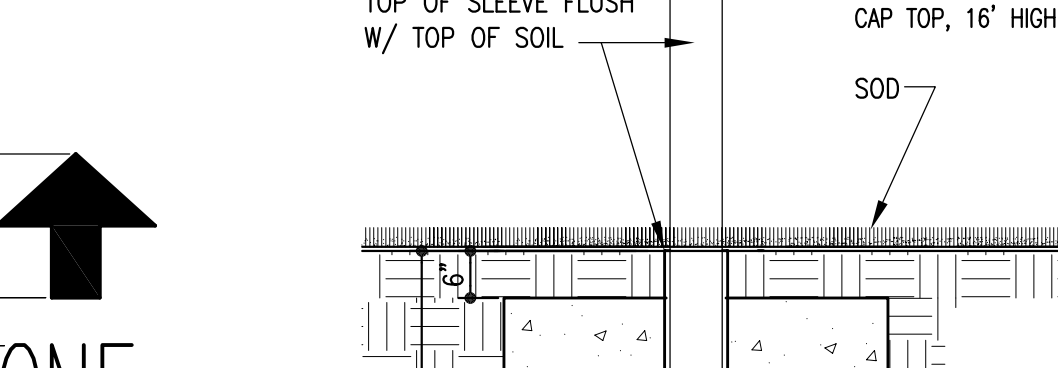
16 Softball BackStop  
Scale: 1/16" = 1'-0"



15b Pavement @ Play Area  
Scale: 3/4" = 1'-0"



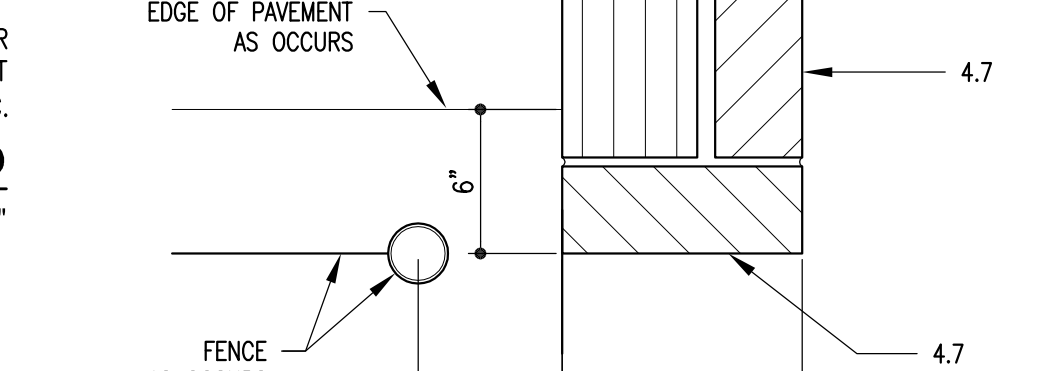
15a Curb @ Play Area  
Scale: 3/4" = 1'-0"



14 Football Goal/ Scoreboard Post  
Scale: 1/2" = 1'-0"



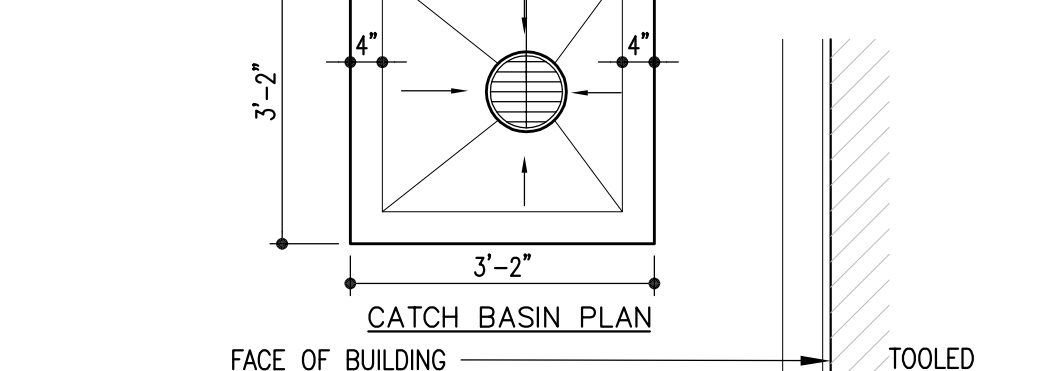
9a Typ Bollard Post  
Scale: 1/2" = 1'-0"



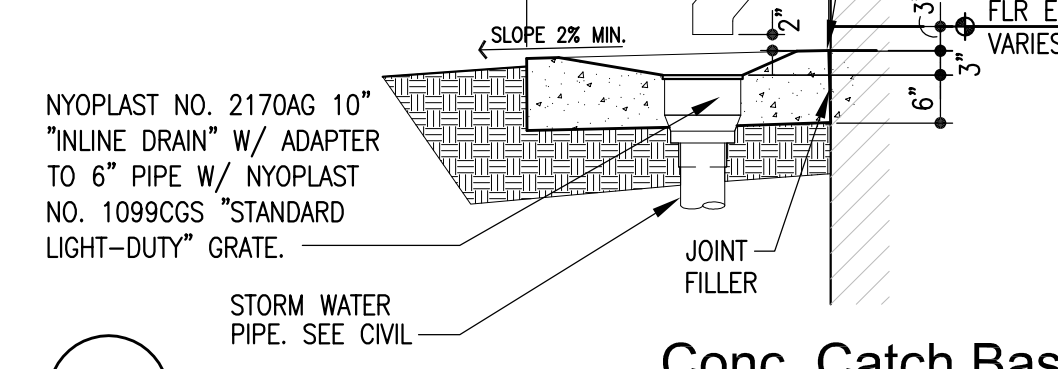
8 Basketball Backstop  
Scale: 1/4" = 1'-0"



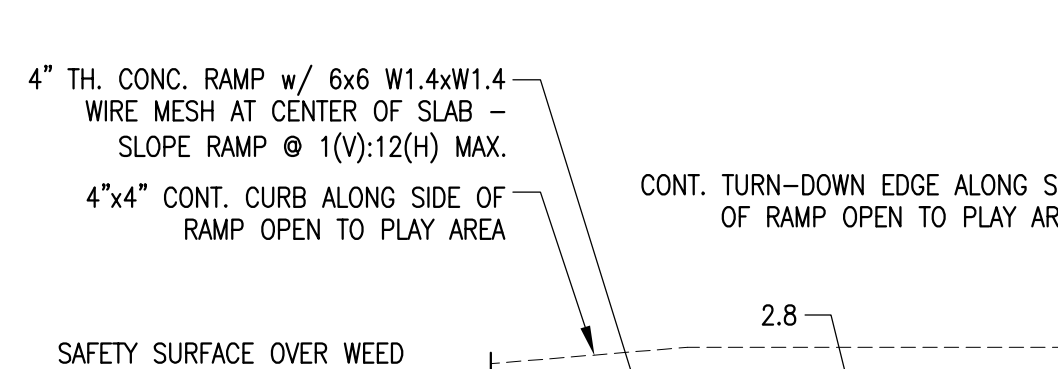
7b Fence at Sidewalk  
Scale: 3/4" = 1'-0"



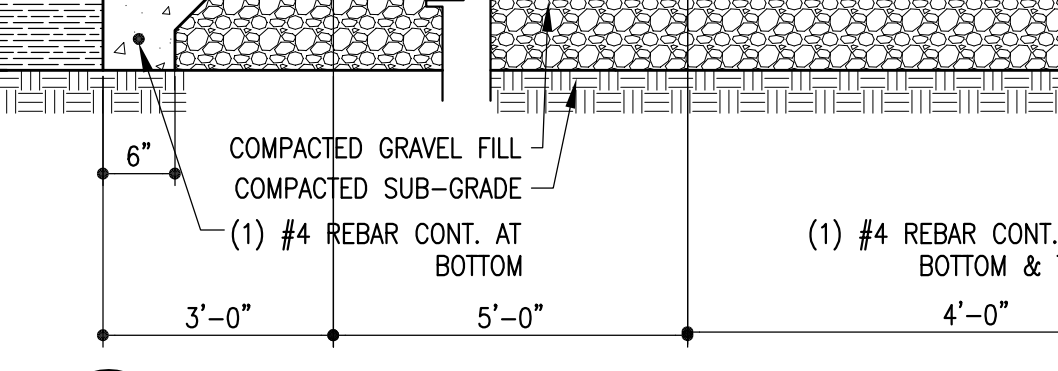
7a Curb at Play Area  
Scale: 3/4" = 1'-0"



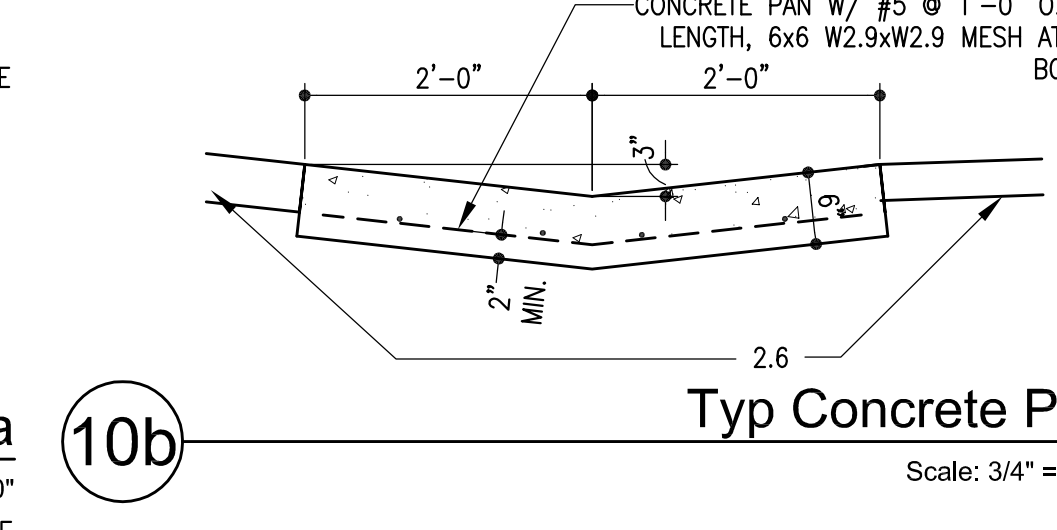
2 Typ. Sign Mounting Graphic and Sched.  
Scale: 1/4" = 1'-0"



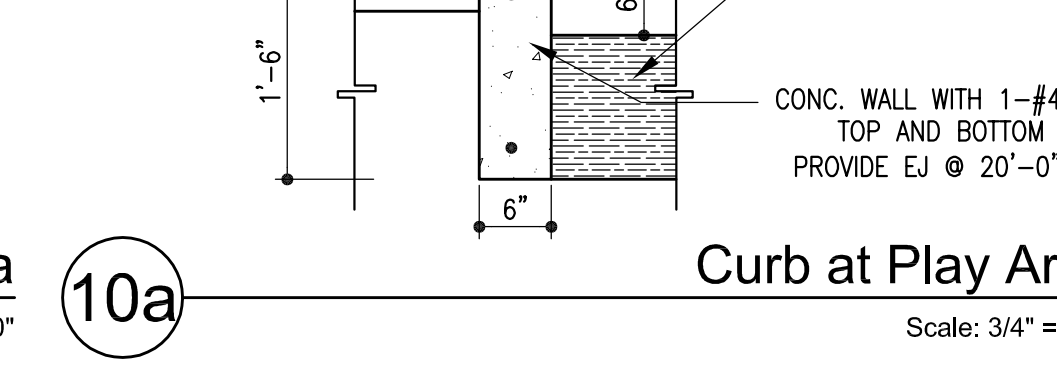
6 Field Corner Detail  
Scale: 3/4" = 1'-0"



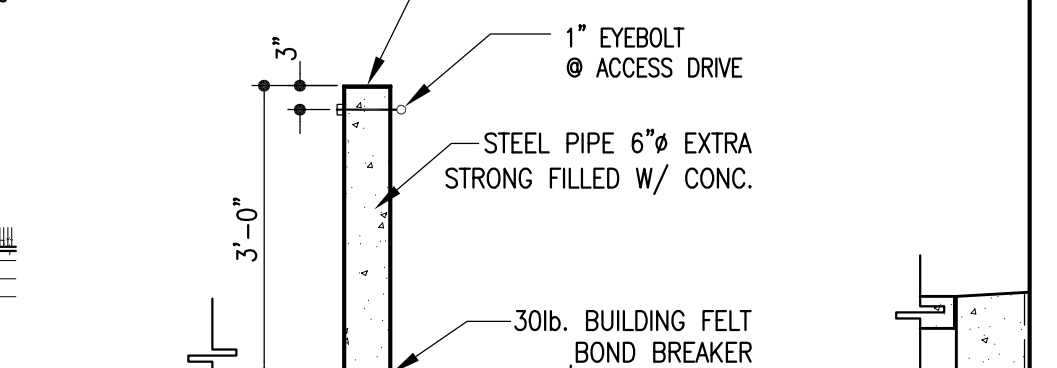
11 Handicap Play Area Ramp Detail  
Scale: 3/4" = 1'-0"



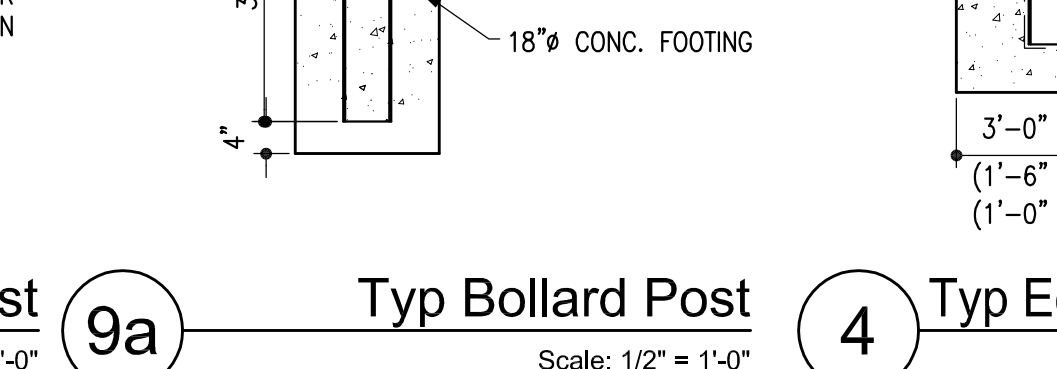
10b Typ Concrete Pan  
Scale: 3/4" = 1'-0"



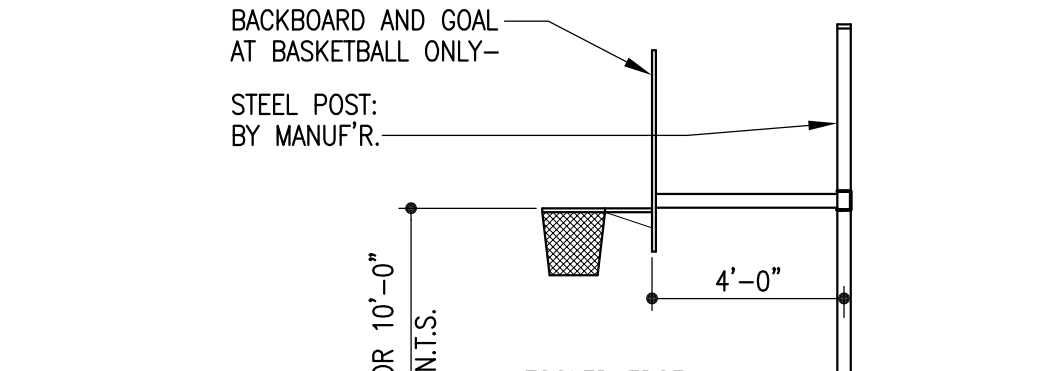
10a Curb at Play Area  
Scale: 3/4" = 1'-0"



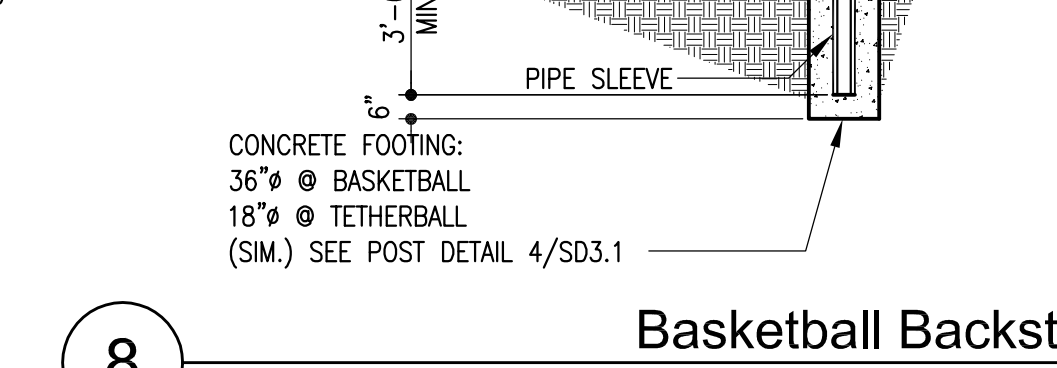
5 Play Area Drain  
Scale: 3/4" = 1'-0"



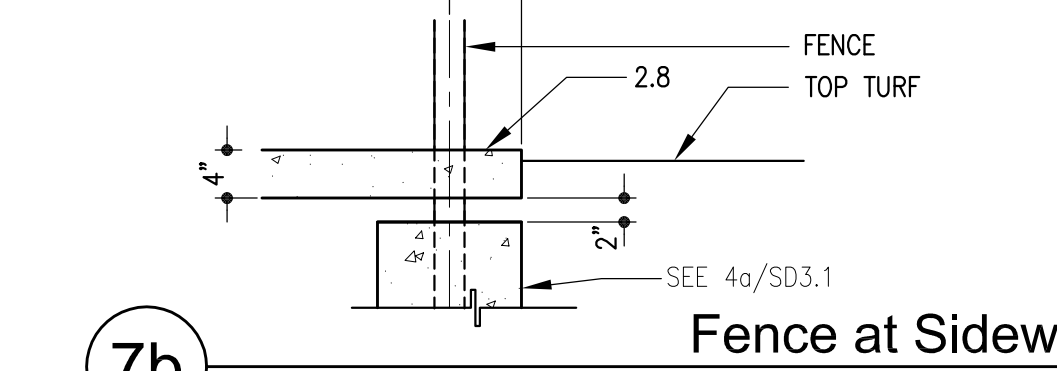
4 Basketball Backstop  
Scale: 1/2" = 1'-0"



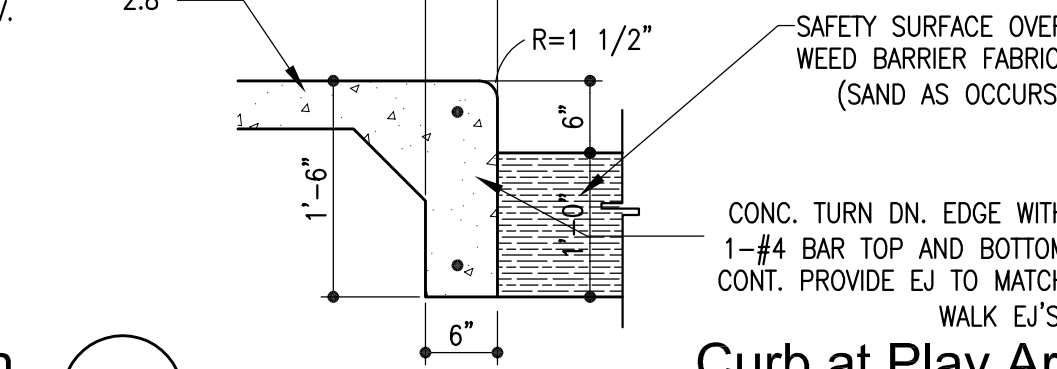
4a Typ Equipment Post Base  
Scale: 1/2" = 1'-0"



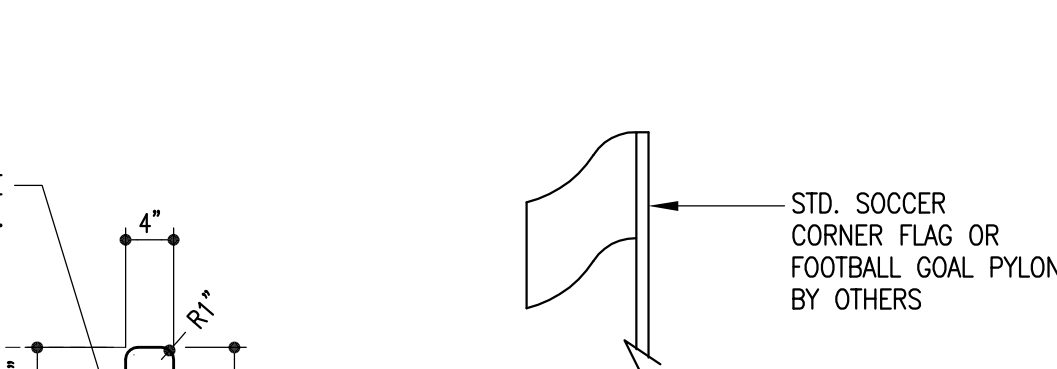
4a Typ Fence Post Base  
Scale: 1/2" = 1'-0"



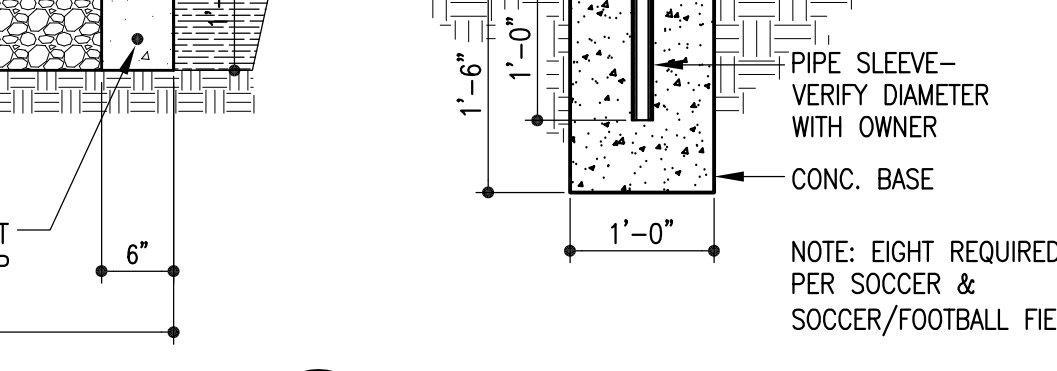
8 Basketball Backstop  
Scale: 1/4" = 1'-0"



7b Fence at Sidewalk  
Scale: 3/4" = 1'-0"

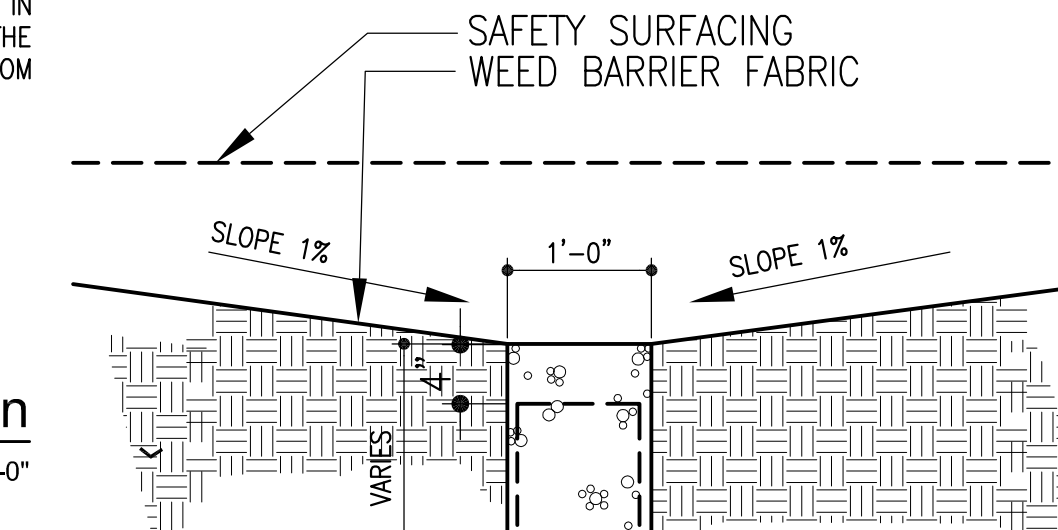


7a Curb at Play Area  
Scale: 3/4" = 1'-0"

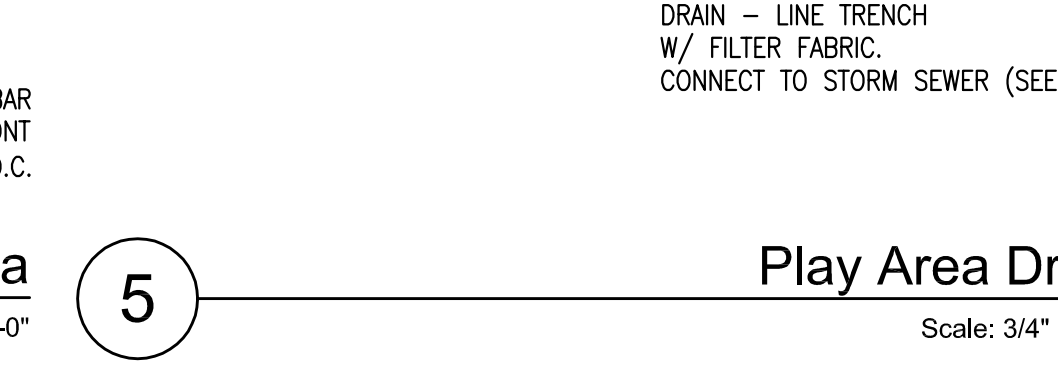


2 Typ. Sign Mounting Graphic and Sched.  
Scale: 1/4" = 1'-0"

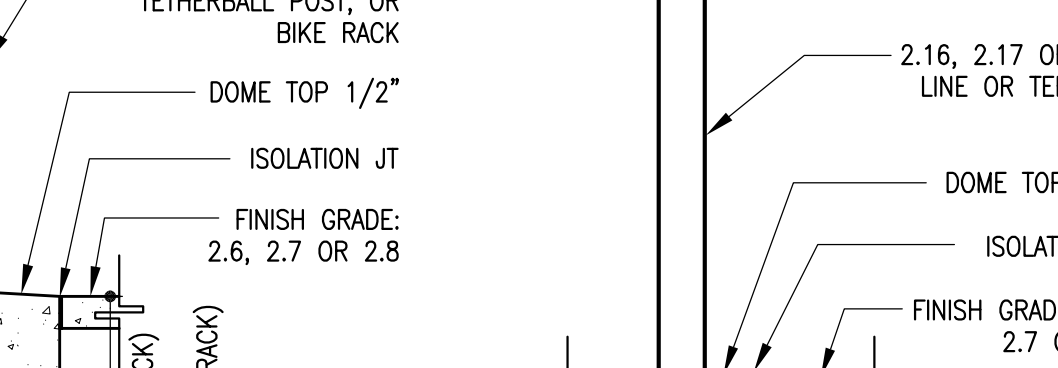
6 Field Corner Detail  
Scale: 3/4" = 1'-0"



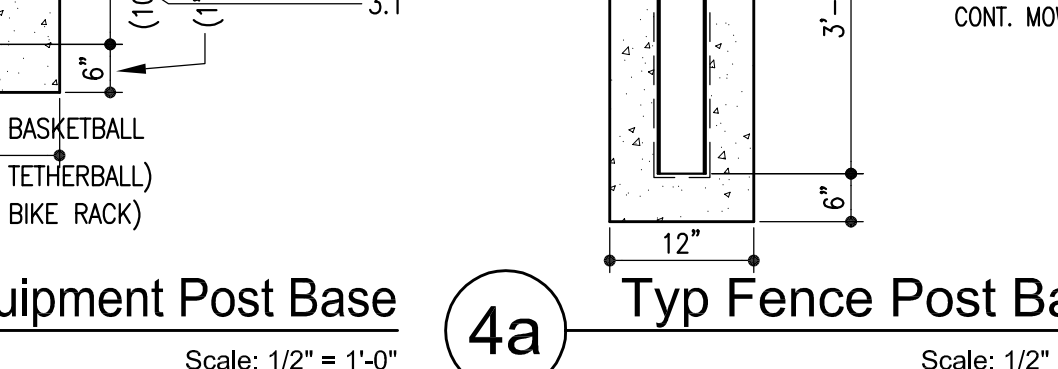
10b Typ Concrete Pan  
Scale: 3/4" = 1'-0"



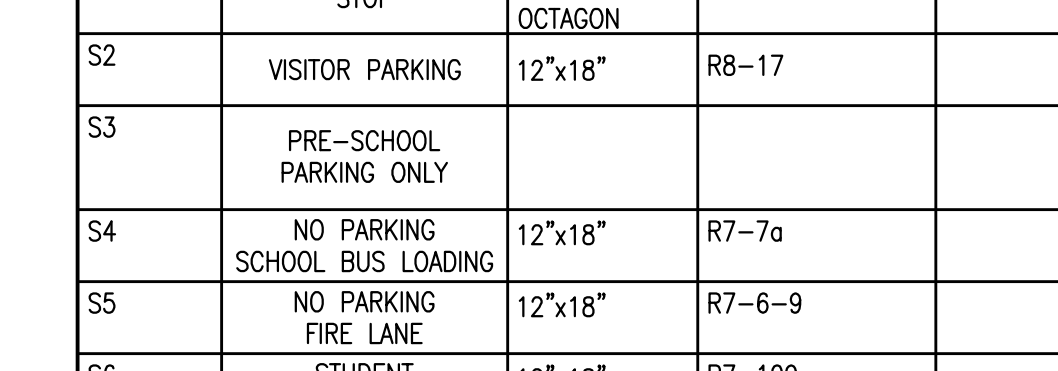
10a Curb at Play Area  
Scale: 3/4" = 1'-0"



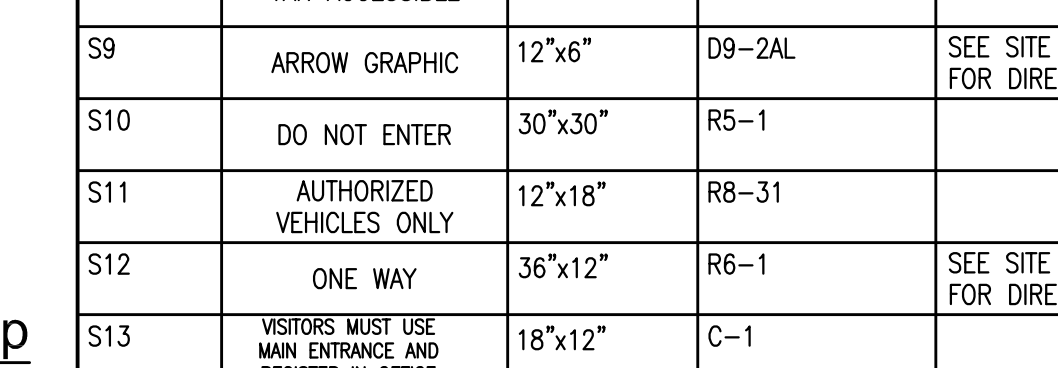
5 Play Area Drain  
Scale: 3/4" = 1'-0"



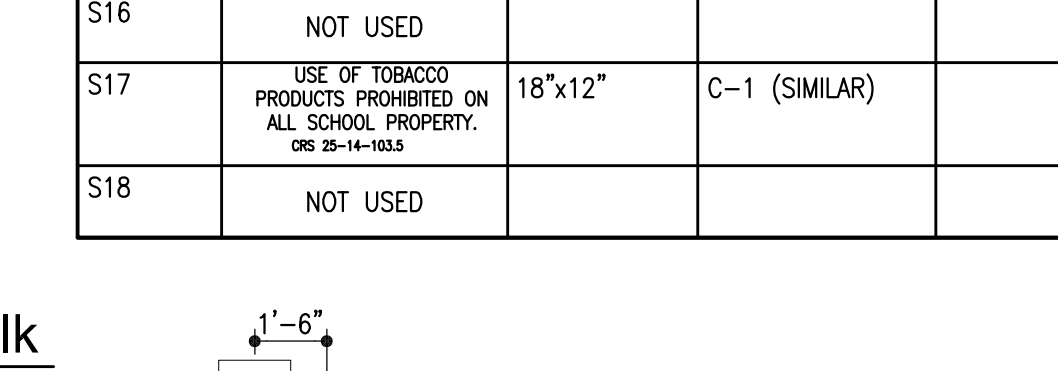
4 Basketball Backstop  
Scale: 1/2" = 1'-0"



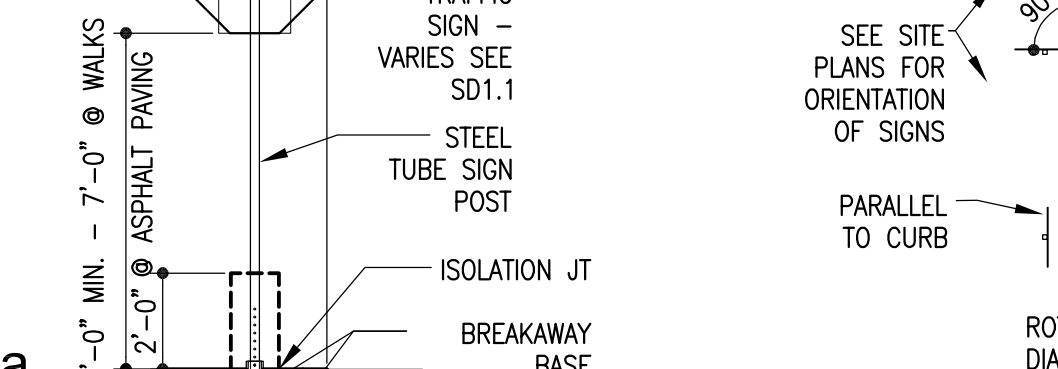
4a Typ Equipment Post Base  
Scale: 1/2" = 1'-0"



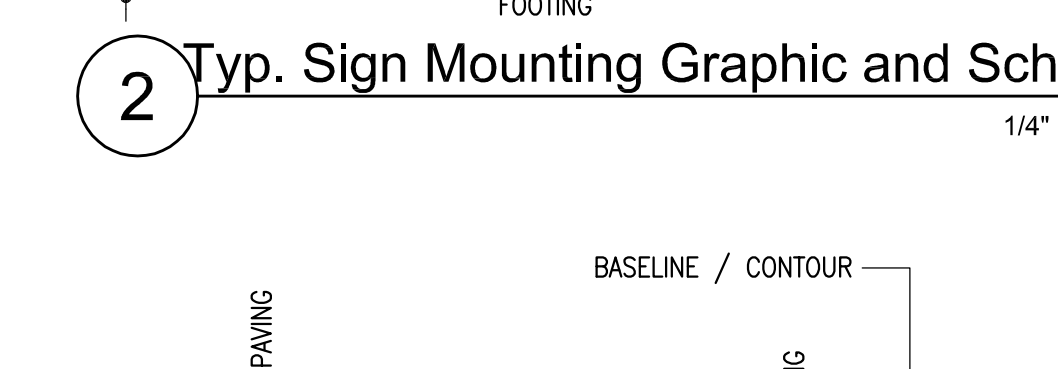
4a Typ Fence Post Base  
Scale: 1/2" = 1'-0"



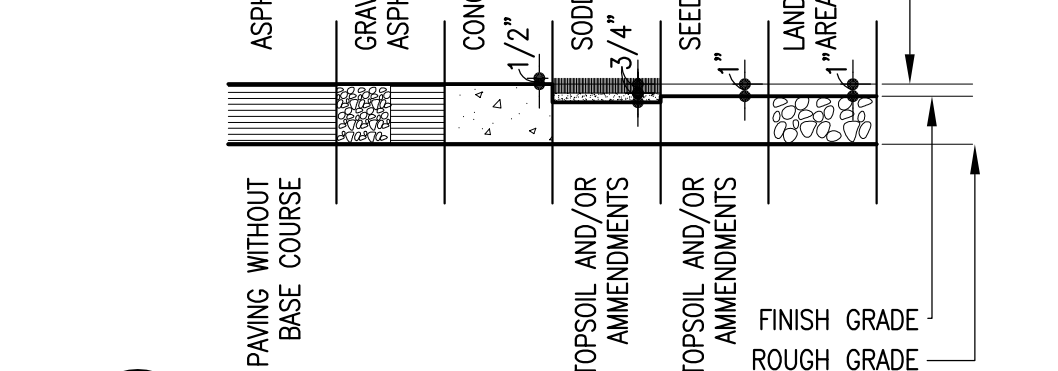
8 Basketball Backstop  
Scale: 1/4" = 1'-0"



7b Fence at Sidewalk  
Scale: 3/4" = 1'-0"



7a Curb at Play Area  
Scale: 3/4" = 1'-0"



2 Typ. Sign Mounting Graphic and Sched.  
Scale: 1/4" = 1'-0"

6 Field Corner Detail  
Scale: 3/4" = 1'-0"

## Key Notes List

- 2.1 DRILLED CONC PIER 8.1 HW FRAME
- 2.2 BACKFILL 8.2 HW DOOR
- 2.3 FREE-DRAINING 8.3 HW FIXED PANEL
- 2.4 GRANULAR BACKFILL 8.4 HW WINDOW
- 2.5 COMPACTED SUBGRADE 8.5 HW STOP
- 2.6 ASPHALTIC CONC 8.6 HW DEFLECTION
- 2.7 ASPHALTIC CONC 8.7 HW FRAME
- 2.8 ASPHALTIC CONC 8.8 HW SUB-SILL
- 2.9 ASPHALTIC CONC 8.9 WOOD FRAME
- 2.10 ASPHALTIC CONC 8.10 WOOD DOOR
- 2.11 ASPHALTIC CONC 8.11 WOOD WINDOW
- 2.12 ASPHALTIC CONC 8.12 WOOD FRAME
- 2.13 ASPHALTIC CONC 8.13 WOOD DOOR
- 2.14 ASPHALTIC CONC 8.14 WOOD WINDOW
- 2.15 ASPHALTIC CONC 8.15 WOOD FRAME
- 2.16 ASPHALTIC CONC 8.16 WOOD DOOR
- 2.17 ASPHALTIC CONC 8.17 WOOD WINDOW
- 2.18 ASPHALTIC CONC 8.18 WOOD FRAME
- 2.19 ASPHALTIC CONC 8.19 WOOD DOOR
- 2.20 ASPHALTIC CONC 8.20 WOOD WINDOW
- 2.21 ASPHALTIC CONC 8.21 WOOD FRAME
- 2.22 ASPHALTIC CONC 8.22 WOOD DOOR
- 2.23 ASPHALTIC CONC 8.23 WOOD WINDOW
- 2.24 ASPHALTIC CONC 8.24 WOOD FRAME
- 2.25 ASPHALTIC CONC 8.25 WOOD DOOR
- 2.26 ASPHALTIC CONC 8.26 WOOD WINDOW
- 2.27 ASPHALTIC CONC 8.27 WOOD FRAME
- 2.28 ASPHALTIC CONC 8.28 WOOD DOOR
- 2.29 ASPHALTIC CONC 8.29 WOOD WINDOW
- 2.30 ASPHALTIC CONC 8.30 WOOD FRAME
- 2.31 ASPHALTIC CONC 8.31 WOOD DOOR
- 2.32 ASPHALTIC CONC 8.32 WOOD WINDOW
- 2.33 ASPHALTIC CONC 8.33 WOOD FRAME
- 2.34 ASPHALTIC CONC 8.34 WOOD DOOR
- 2.35 ASPHALTIC CONC 8.35 WOOD WINDOW
- 2.36 ASPHALTIC CONC 8.36 WOOD FRAME
- 2.37 ASPHALTIC CONC 8.37 WOOD DOOR
- 2.38 ASPHALTIC CONC 8.38 WOOD WINDOW
- 2.39 ASPHALTIC CONC 8.39 WOOD FRAME
- 2.40 ASPHALTIC CONC 8.40 WOOD DOOR
- 2.41 ASPHALTIC CONC 8.41 WOOD WINDOW
- 2.42 ASPHALTIC CONC 8.42 WOOD FRAME
- 2.43 ASPHALTIC CONC 8.43 WOOD DOOR
- 2.44 ASPHALTIC CONC 8.44 WOOD WINDOW
- 2.45 ASPHALTIC CONC 8.45 WOOD FRAME
- 2.46 ASPHALTIC CONC 8.46 WOOD DOOR
- 2.47 ASPHALTIC CONC 8.47 WOOD WINDOW
- 2.48 ASPHALTIC CONC 8.48 WOOD FRAME
- 2.49 ASPHALTIC CONC 8.49 WOOD DOOR
- 2.50 ASPHALTIC CONC 8.50 WOOD WINDOW
- 2.51 ASPHALTIC CONC 8.51 WOOD FRAME
- 2.52 ASPHALTIC CONC 8.52 WOOD DOOR
- 2.53 ASPHALTIC CONC 8.53 WOOD WINDOW
- 2.54 ASPHALTIC CONC 8.54 WOOD FRAME
- 2.55 ASPHALTIC CONC 8.55 WOOD DOOR
- 2.56 ASPHALTIC CONC 8.56 WOOD WINDOW
- 2.57 ASPHALTIC CONC 8.57 WOOD FRAME
- 2.58 ASPHALTIC CONC 8.58 WOOD DOOR
- 2.59 ASPHALTIC CONC 8.59 WOOD WINDOW
- 2.60 ASPHALTIC CONC 8.60 WOOD FRAME
- 2.61 ASPHALTIC CONC 8.61 WOOD DOOR
- 2.62 ASPHALTIC CONC 8.62 WOOD WINDOW
- 2.63 ASPHALTIC CONC 8.63 WOOD FRAME
- 2.64 ASPHALTIC CONC 8.64 WOOD DOOR
- 2.65 ASPHALTIC CONC 8.65 WOOD WINDOW
- 2.66 ASPHALTIC CONC 8.66 WOOD FRAME
- 2.67 ASPHALTIC CONC 8.67 WOOD DOOR
- 2.68 ASPHALTIC CONC 8.68 WOOD WINDOW
- 2.69 ASPHALTIC CONC 8.69 WOOD FRAME
- 2.70 ASPHALTIC CONC 8.70 WOOD DOOR
- 2.71 ASPHALTIC CONC 8.71 WOOD WINDOW
- 2.72 ASPHALTIC CONC 8.72 WOOD FRAME
- 2.73 ASPHALTIC CONC 8.73 WOOD DOOR
- 2.74 ASPHALTIC CONC 8.74 WOOD WINDOW
- 2.75 ASPHALTIC CONC 8.75 WOOD FRAME
- 2.76 ASPHALTIC CONC 8.76 WOOD DOOR
- 2.77 ASPHALTIC CONC 8.77 WOOD WINDOW
- 2.78 ASPHALTIC CONC 8.78 WOOD FRAME
- 2.79 ASPHALTIC CONC 8.79 WOOD DOOR









**LEGEND**

PROPOSED INTERMEDIATE CONTOUR  
PROPOSED INDEX CONTOUR  
*EX. INTERMEDIATE CONTOUR*  
*EX. INDEX CONTOUR*  
PROPOSED STORM SEWER  
PROPOSED INLET  
PROPOSED FLARED END SECTION  
PROPOSED SITE LIGHTING  
PROPOSED PEDESTRIAN LIGHTING  
*EX. MANHOLE*  
*EX. LIGHT POLE*  
*EX. FIRE HYDRANT*  
*EX. WATER VALVE*  
*EX. STORM SEWER*  
*EX. SANITARY SEWER*

5750  
-5750-  
SS

50 20 0 50 100  
SCALE: 1"=50'

North arrow pointing up.

**L K A PARTNERS**  
INCORPORATED  
A Professional Corporation for Architecture and Planning  
430 North Tejon Street Suite 200  
Colorado Springs Colorado 80903  
tele: 719.473.8448 fax: 719.473.8448  
web: www.lkapartners.com

**DREXEL, BARRELL & CO.**  
Engineers • Surveyors  
3 SOUTH 7TH STREET  
COLORADO SPGS, COLORADO 80905  
CONTACT: TIM D. MCCONNELL, P.E.  
(719) 260-4887  
BOULDER • COLORADO SPRINGS • GREELEY

© Copyright 2017 The LKA Partners, Inc. This document and the information contained herein may not be reproduced or excerpted from without the express written permission of The LKA Partners, Inc. Unauthorized copying, disclosure or construction use are prohibited by copyright law.

**New Widefield PK-8 School**  
11060 Fontaine Blvd., Widefield, CO  
**Widefield School District 3**  
1820 Main Street  
Colorado Springs, CO 80911



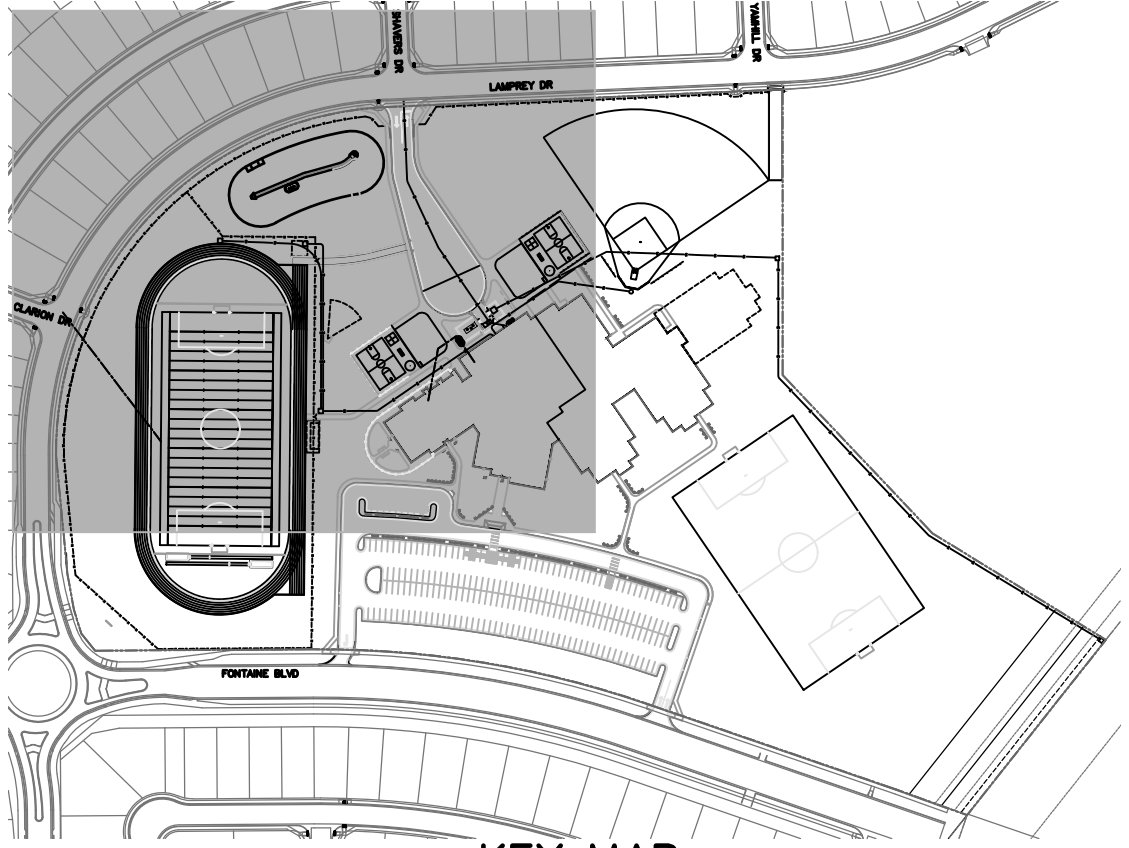
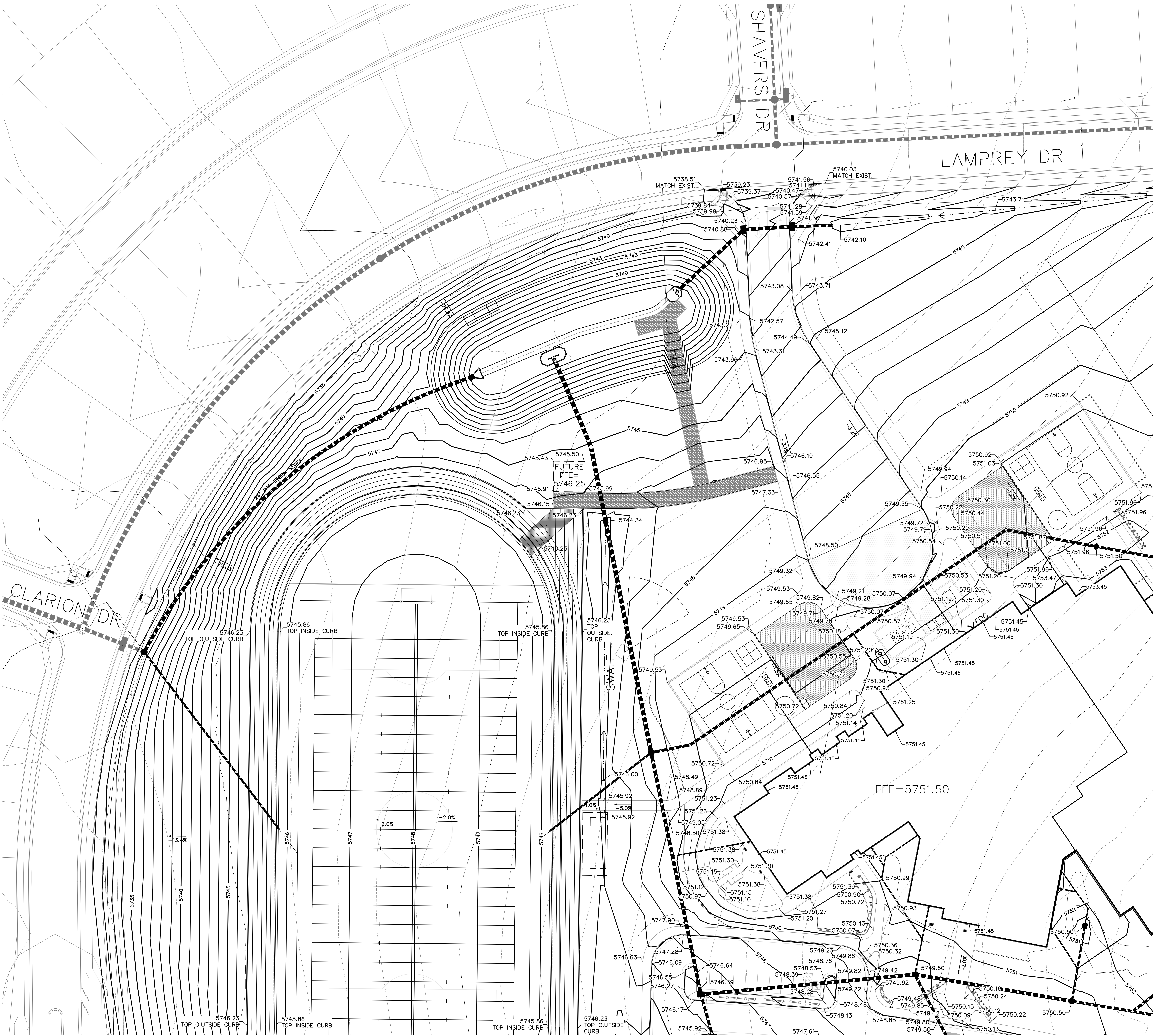
Construction Documents

Drawn:	SBN
Checked:	TDM
Issued:	03 July 2018
Revised:	
	21126--00--3.0GR

OVERALL SITE  
GRADING PLAN

**C3.0**

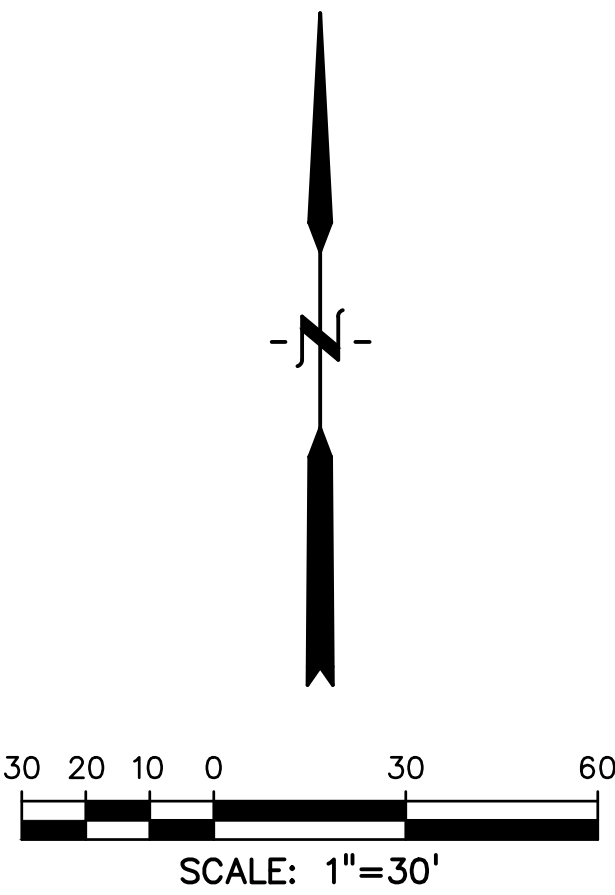




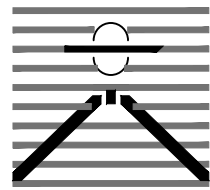
KEY MAP

LEGEND

- PROPOSED INTERMEDIATE CONTOUR
- PROPOSED INDEX CONTOUR
- EX. INTERMEDIATE CONTOUR
- EX. INDEX CONTOUR
- PROPOSED STORM SEWER
- PROPOSED INLET
- PROPOSED FLARED END SECTION
- PROPOSED SITE LIGHTING
- PROPOSED PEDESTRIAN LIGHTING
- EX. MANHOLE
- EX. LIGHT POLE
- EX. FIRE HYDRANT
- EX. WATER VALVE
- EX. STORM SEWER
- EX. SANITARY SEWER
- SPOT GRADE AT FL OR FG



**L K A PART N E R S**  
I N C O R P O R A T E D  
A Professional Corporation for Architecture and Planning  
430 North Tejon Street Suite 200  
Colorado Springs Colorado 80903  
tele: 719.473.8448 fax: 719.473.8448  
web: www.lkapartners.com



**DREXEL, BARRELL & CO.**  
Engineers-Surveyors  
3 SOUTH 7TH STREET  
COLORADO SPGS, COLORADO 80905  
CONTACT: TIM D. MCCONNELL, P.E.  
(719) 260-4887  
BOULDER • COLORADO SPRINGS • GREELEY

© Copyright 2017 The LKA Partners, Inc. This document and the information contained herein may not be reproduced or excerpted from without the express written permission of The LKA Partners, Inc. Unauthorized copying, disclosure or construction use are prohibited by copyright law.

**New Widefield PK-8 School**  
11060 Fontaine Blvd., Widefield, CO  
**Widefield School District 3**  
1820 Main Street  
Colorado Springs, CO 80911



Construction Documents

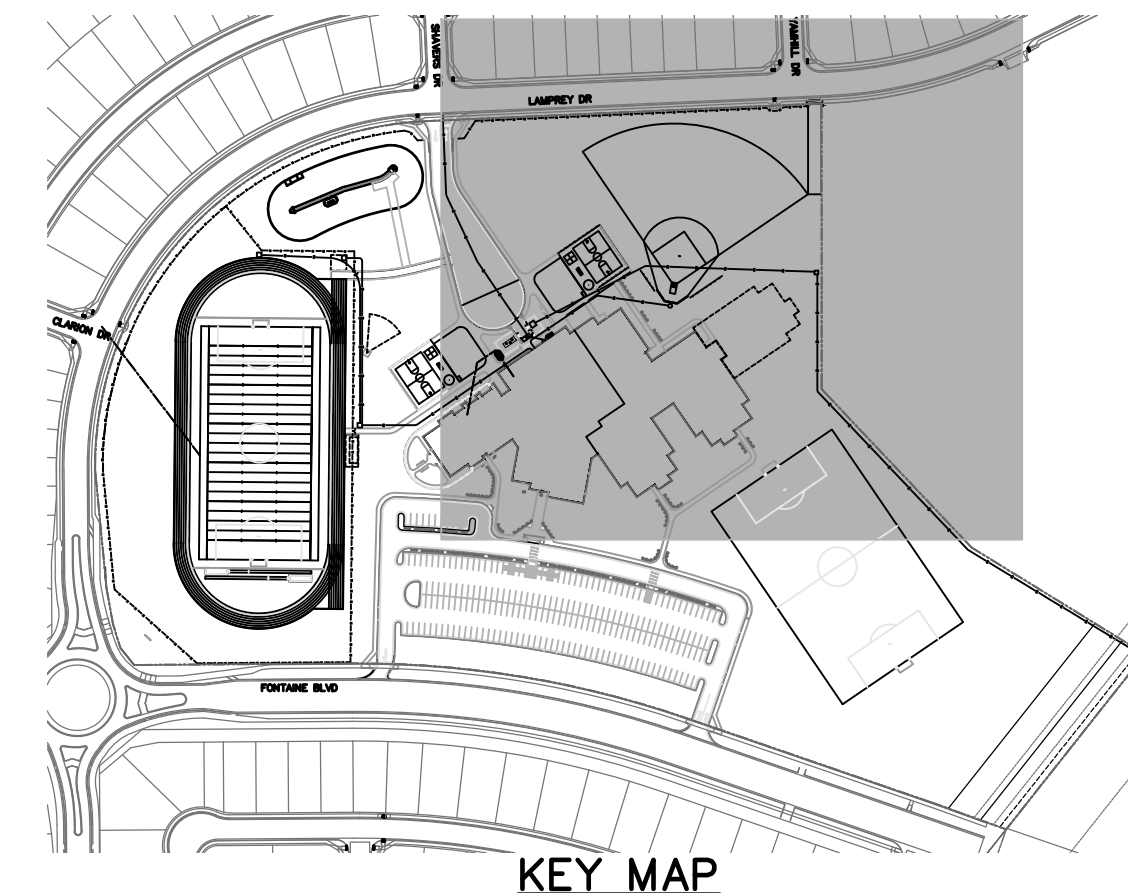
Drawn: SBN  
Checked: TDM  
Issued: 03 July 2018  
Revised:

21126--00--3.1GR

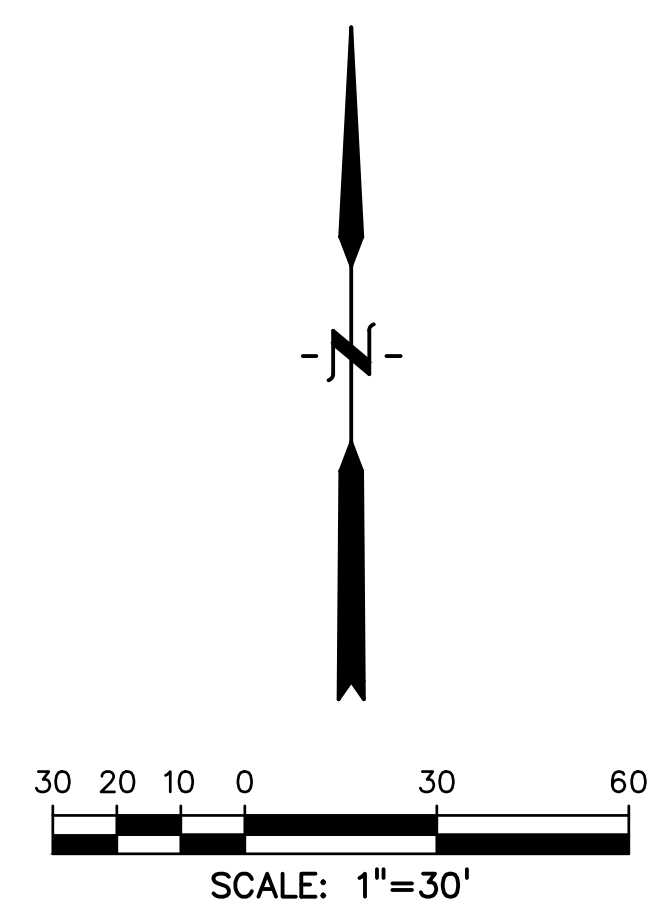
SITE  
GRADING PLAN

**C3.1**





- LEGEND**
- PROPOSED INTERMEDIATE CONTOUR
  - PROPOSED INDEX CONTOUR
  - EX. INTERMEDIATE CONTOUR
  - EX. INDEX CONTOUR
  - PROPOSED STORM SEWER
  - PROPOSED INLET
  - PROPOSED FLARED END SECTION
  - PROPOSED SITE LIGHTING
  - PROPOSED PEDESTRIAN LIGHTING
  - EX. MANHOLE
  - EX. LIGHT POLE
  - EX. FIRE HYDRANT
  - EX. WATER VALVE
  - EX. STORM SEWER
  - EX. SANITARY SEWER
  - SPOT GRADE AT FL OR FG



**L K A PART N E R S**  
I N C O R P O R A T E D  
A Professional Corporation for Architecture and Planning  
430 North Tejon Street Suite 200  
Colorado Springs Colorado 80903  
tele: 719.473.8448 fax: 719.473.8448  
web: www.lkapartners.com

**DREXEL, BARRELL & CO.**  
Engineers • Surveyors  
3 SOUTH 7TH STREET  
COLORADO SPGS, COLORADO 80905  
CONTACT: TIM D. MCCONNELL, P.E.  
(719) 260-4887  
BOULDER • COLORADO SPRINGS • GREELEY

© Copyright 2017 The LKA Partners, Inc. This document and the information contained herein may not be reproduced or excerpted from without the express written permission of The LKA Partners, Inc. Unauthorized copying, disclosure or construction use are prohibited by copyright law.

**New Widefield PK-8 School**  
11060 Fontaine Blvd., Widefield, CO  
**Widefield School District 3**  
1820 Main Street  
Colorado Springs, CO 80911



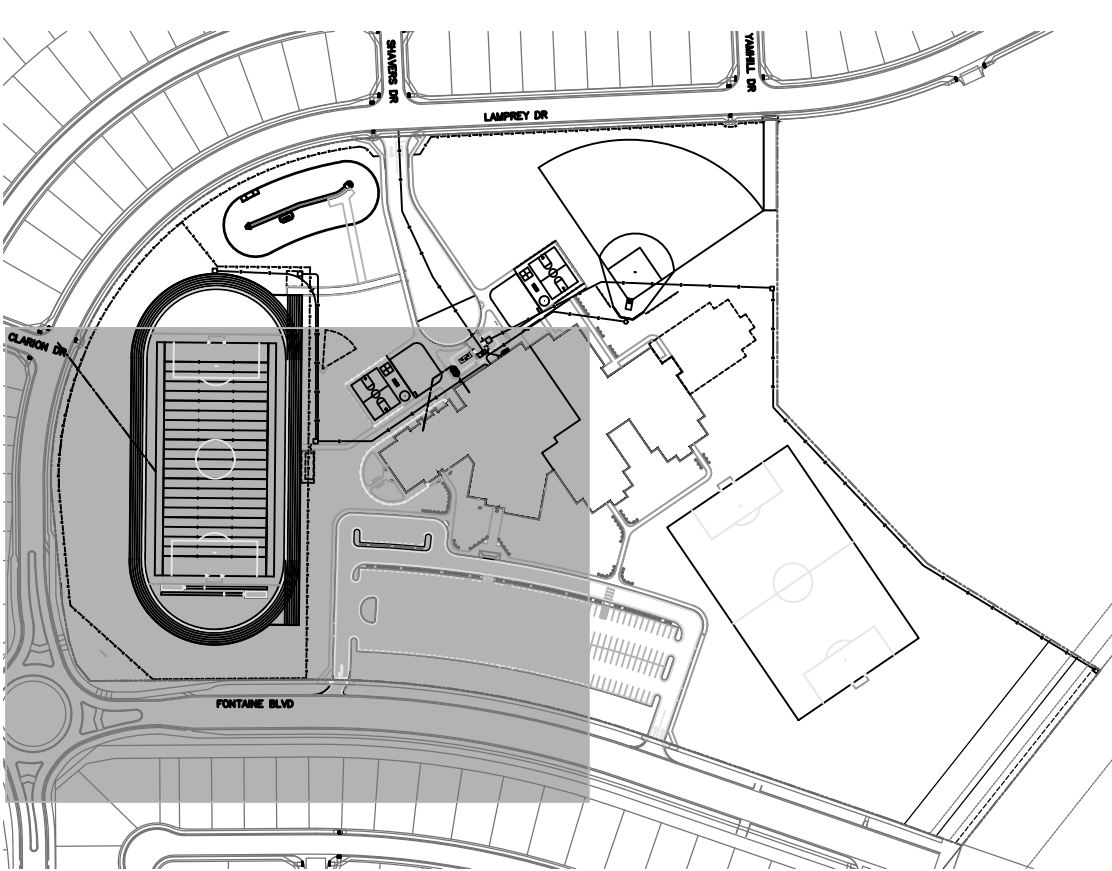
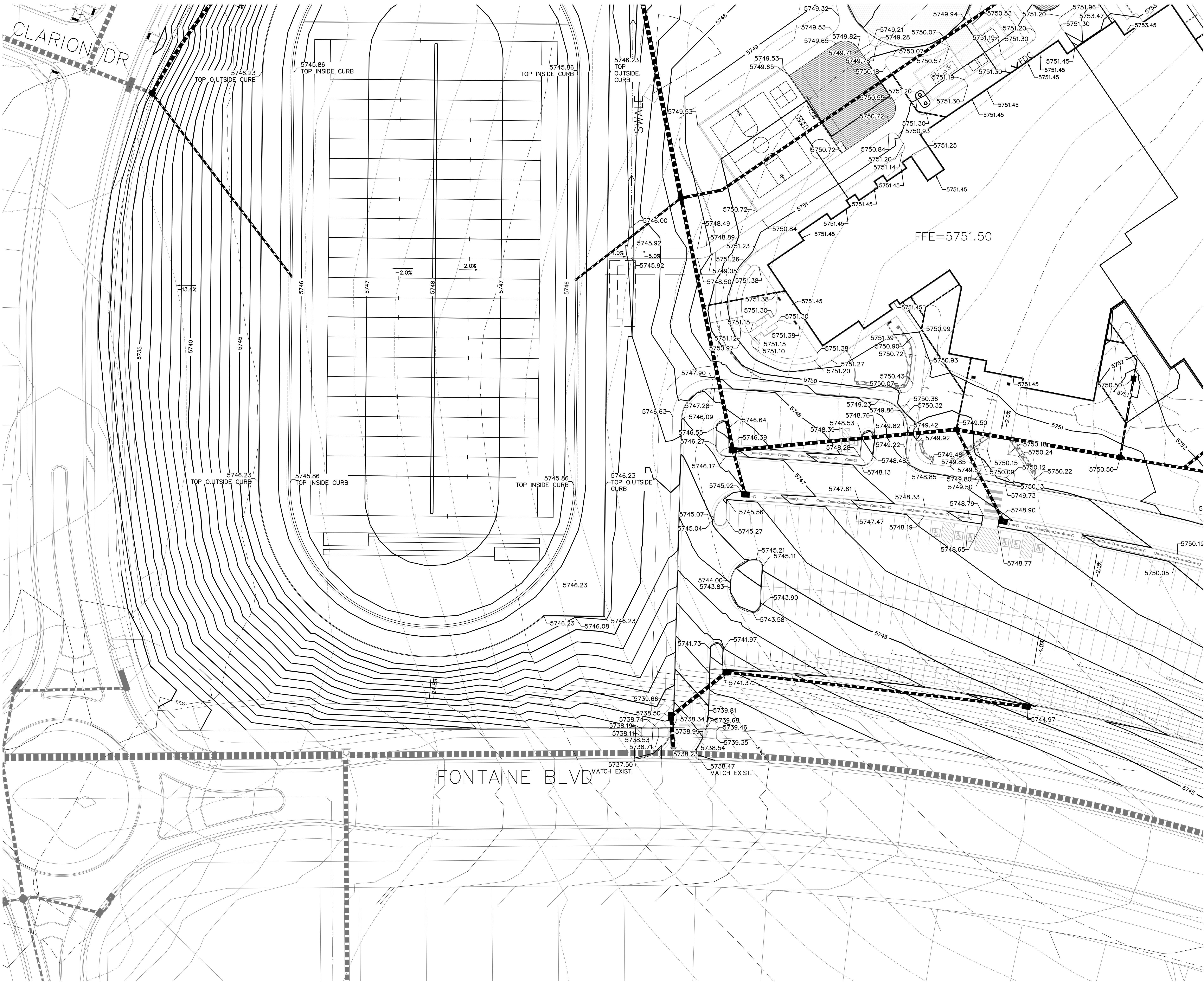
Construction Documents

Drawn: SBN  
Checked: TDM  
Issued: 03 July 2018  
Revised:  
21126-00-3.1GR

**SITE GRADING PLAN**

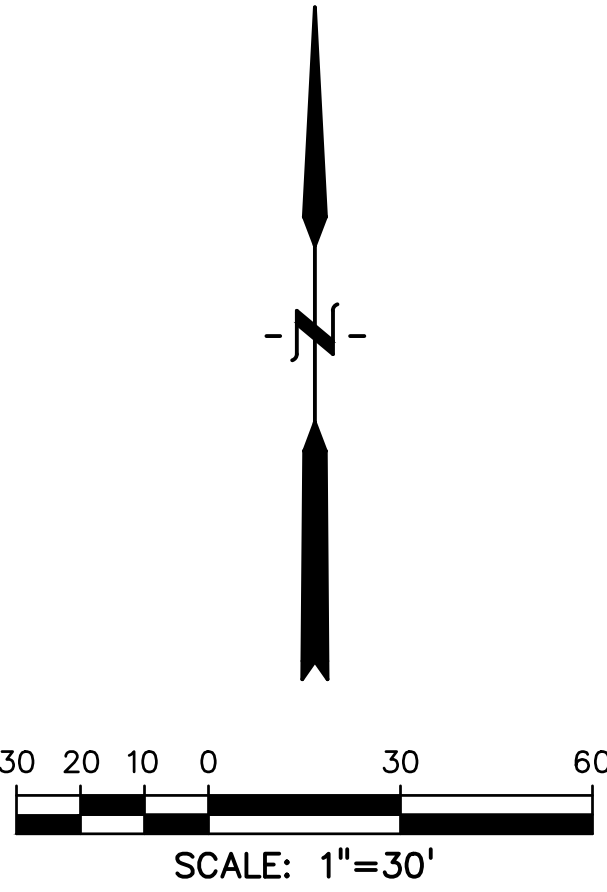
**C3.2**





LEGEND

- PROPOSED INTERMEDIATE CONTOUR
- PROPOSED INDEX CONTOUR
- EX. INTERMEDIATE CONTOUR
- EX. INDEX CONTOUR
- PROPOSED STORM SEWER
- PROPOSED INLET
- PROPOSED FLARED END SECTION
- PROPOSED SITE LIGHTING
- PROPOSED PEDESTRIAN LIGHTING
- EX. MANHOLE
- EX. LIGHT POLE
- EX. FIRE HYDRANT
- EX. WATER VALVE
- EX. STORM SEWER
- EX. SANITARY SEWER
- SPOT GRADE AT FL OR FG



New Widefield PK-8 School  
11060 Fontaine Blvd., Widefield, CO  
Widefield School District 3  
1820 Main Street  
Colorado Springs, CO 80911



Construction Documents

Drawn: SBN  
Checked: TDM  
Issued: 03 July 2018  
Revised:

21126-00-3.1GR

SITE  
GRADING PLAN

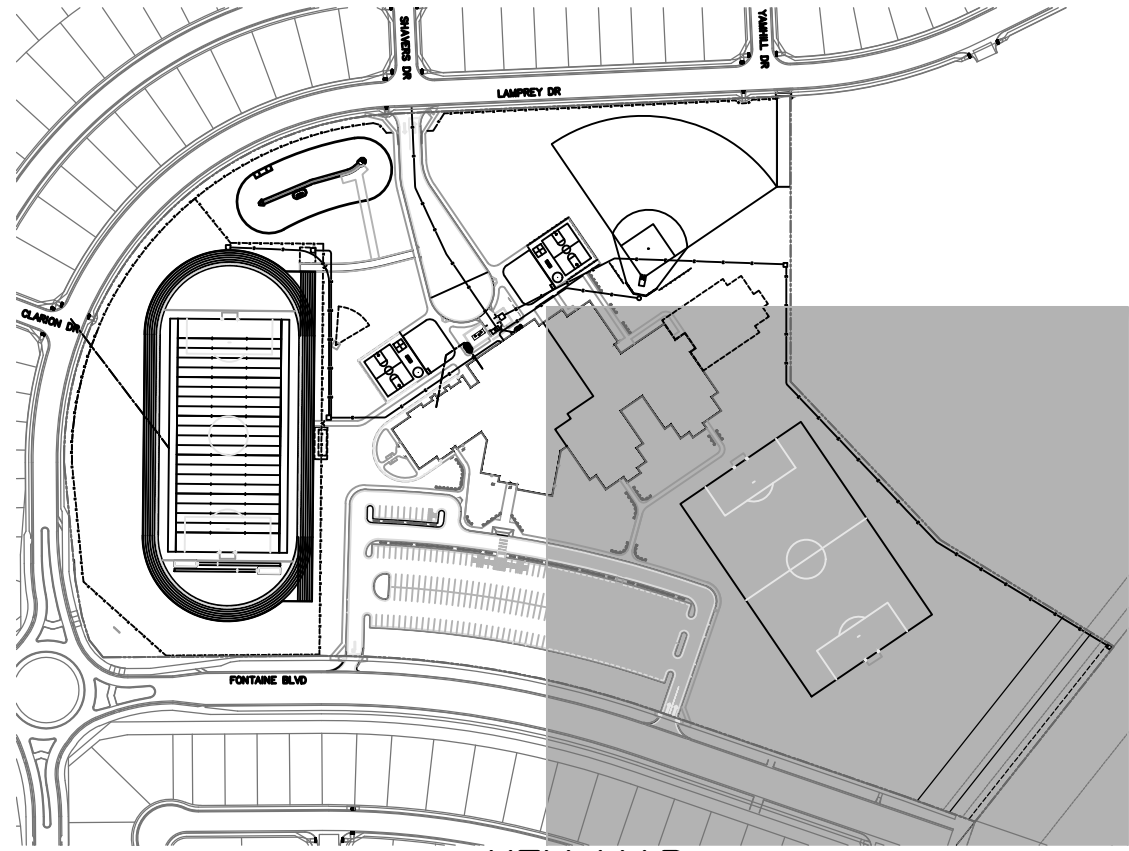
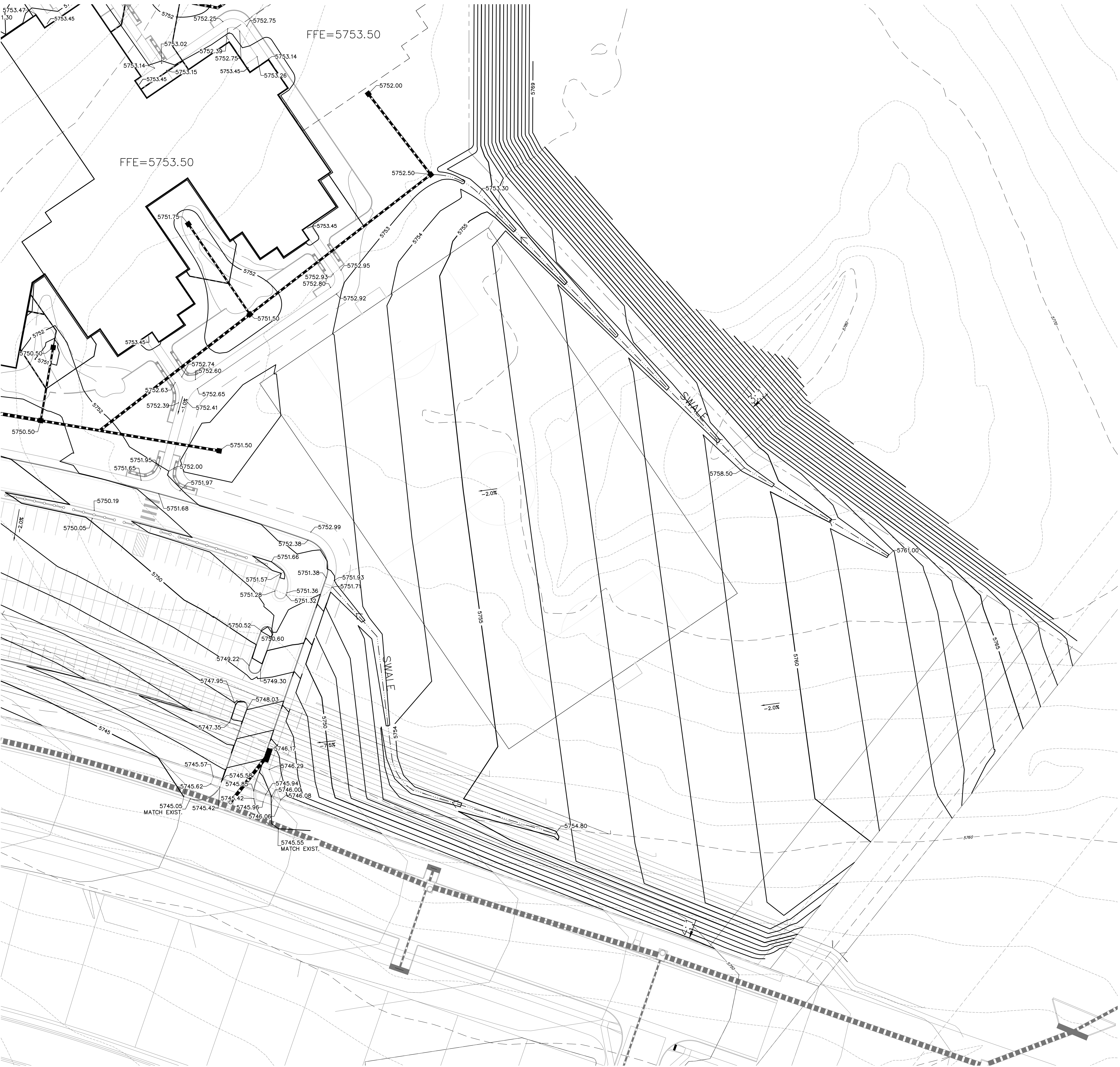
C3.3

Copyright 2017 The LKA Partners, Inc. This document and the information contained herein may not be reproduced or excerpted from without the express written permission of The LKA Partners, Inc. Unauthorized copying, disclosure or construction use are prohibited by copyright law.

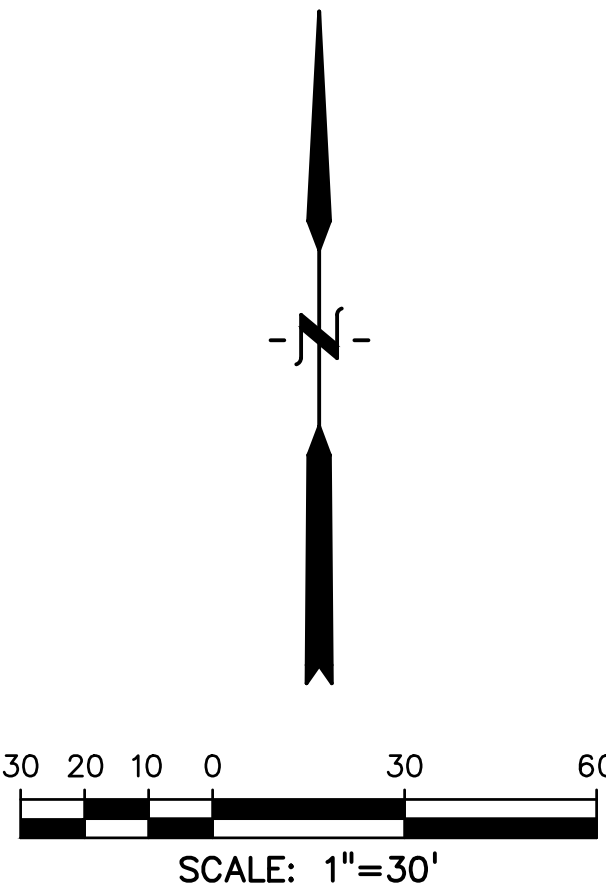
DREXEL, BARRELL & CO.  
Engineers • Surveyors  
3 SOUTH 7TH STREET  
COLORADO SPRINGS, COLORADO 80905  
CONTACT: TIM D. MCCONNELL, P.E.  
(719) 260-4887  
BOULDER • COLORADO SPRINGS • GREELEY

LKA PARTNERS  
INCORPORATED  
A Professional Corporation for Architecture and Planning  
430 North Tejon Street Suite 200  
Colorado Springs, Colorado 80903  
tele: 719.473.8448 fax: 719.473.8448  
web: www.lkpartners.com





LEGEND	
PROPOSED INTERMEDIATE CONTOUR	
PROPOSED INDEX CONTOUR	
EX. INTERMEDIATE CONTOUR	
EX. INDEX CONTOUR	
PROPOSED STORM SEWER	
PROPOSED INLET	
PROPOSED FLARED END SECTION	
PROPOSED SITE LIGHTING	
PROPOSED PEDESTRIAN LIGHTING	
EX. MANHOLE	
EX. LIGHT POLE	
EX. FIRE HYDRANT	
EX. WATER VALVE	
EX. STORM SEWER	
EX. SANITARY SEWER	
SPOT GRADE AT FL OR FG	



**New Widefield PK-8 School**  
11060 Fontaine Blvd., Widefield, CO

**Widefield School District 3**  
1020 Main Street  
Colorado Springs, CO 80911



Construction Documents

Drawn:	SBN
Checked:	TDM
Issued:	03 July 2018
Revised:	
	21126-00-3.1GR

SITE  
GRADING PLAN

**C3.4**

Copyright 2017 The LKA Partners, Inc. This document and the information contained herein may not be reproduced or excerpted from without the express written permission of The LKA Partners, Inc. Unauthorized copying, disclosure or construction use are prohibited by copyright law.

L K A PART N E R S

INCORPORATED

A Professional Corporation for Architecture and Planning

430 North Tejon Street Suite 200

Colorado Springs Colorado 80903

tele: 719.473.8448 fax: 719.473.8448

web: www.lkpartners.com

DREXEL, BARRELL & CO.

Engineers • Surveyors

3 SOUTH 7TH STREET

COLORADO SPRINGS, COLORADO 80905

CONTACT: TIM D. McCONNELL, P.E.

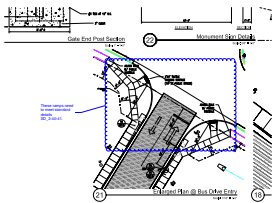
(719) 260-4887

BOULDER • COLORADO SPRINGS • GREELEY



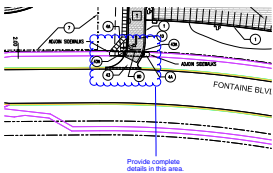
# Markup Summary

dsdrice (2)



**Subject:** Cloud+  
**Page Label:** 4  
**Lock:** Unlocked  
**Author:** dsdrice  
**Date:** 1/15/2019 3:38:11 PM  
**Color:** ■

These ramps need to meet standard details SD\_2-40-41.



**Subject:** Cloud+  
**Page Label:** 1  
**Lock:** Unlocked  
**Author:** dsdrice  
**Date:** 1/15/2019 3:41:22 PM  
**Color:** ■

Provide complete details in this area.