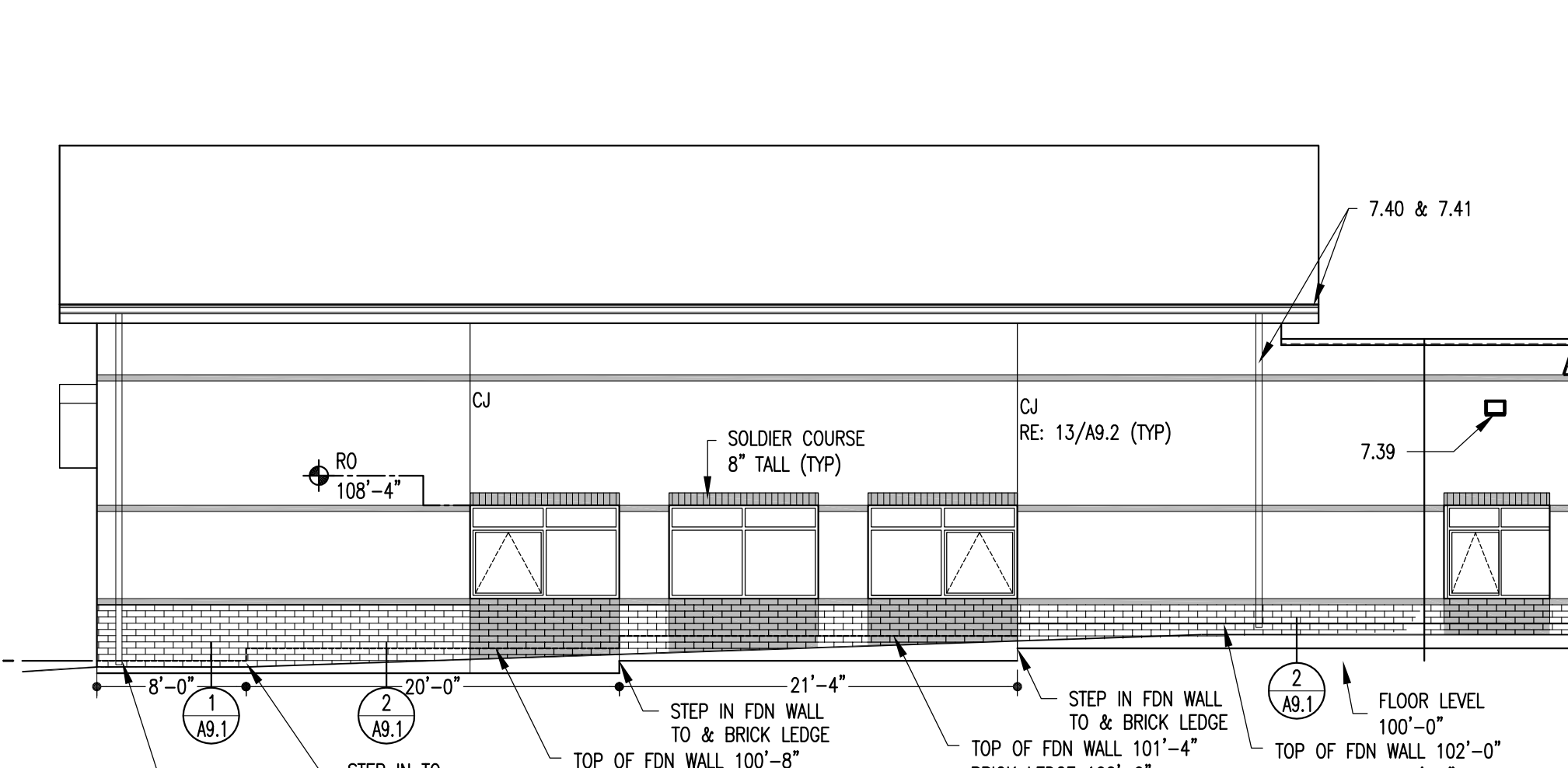
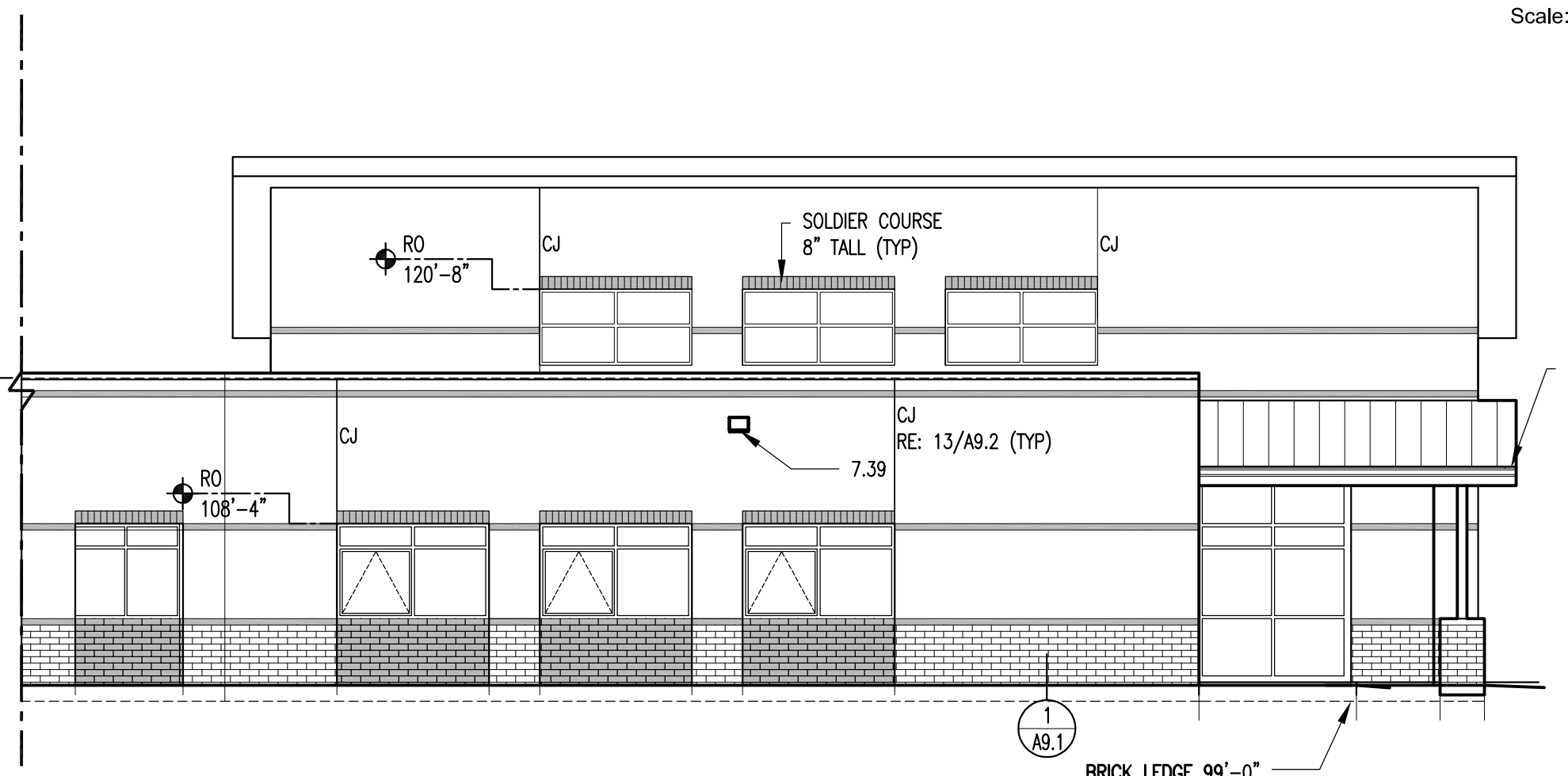


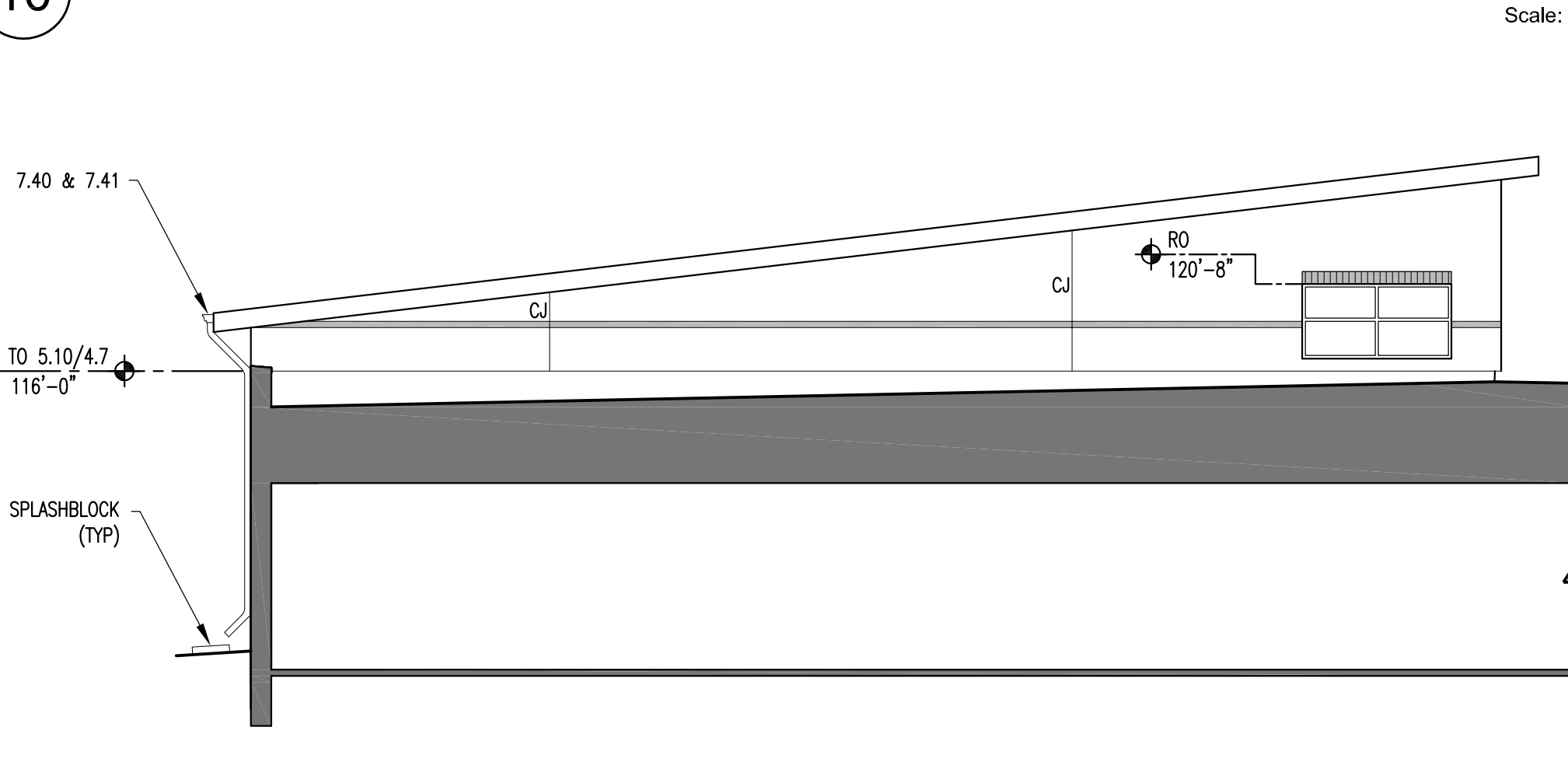
Southwest Elevation
Scale: 1/8" = 1'-0"



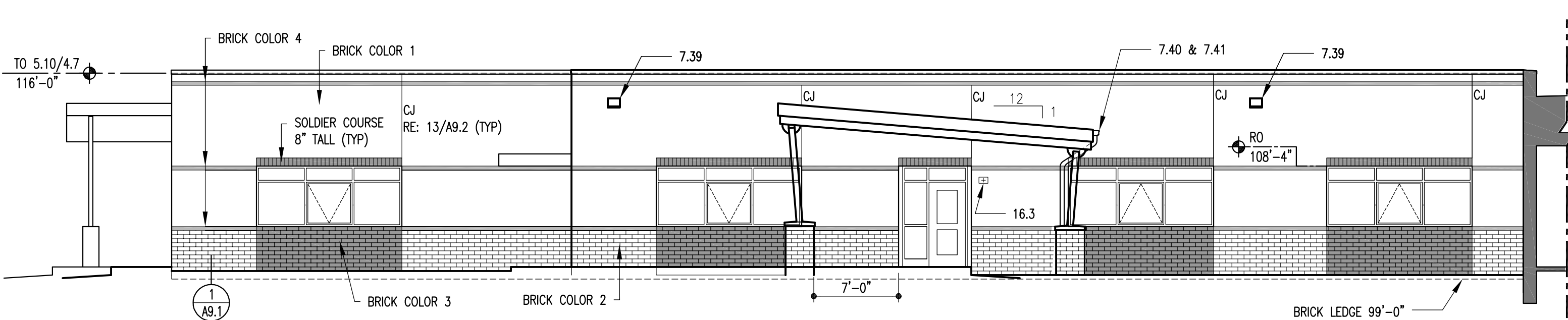
Southeast Elevation
Scale: 1/8" = 1'-0"



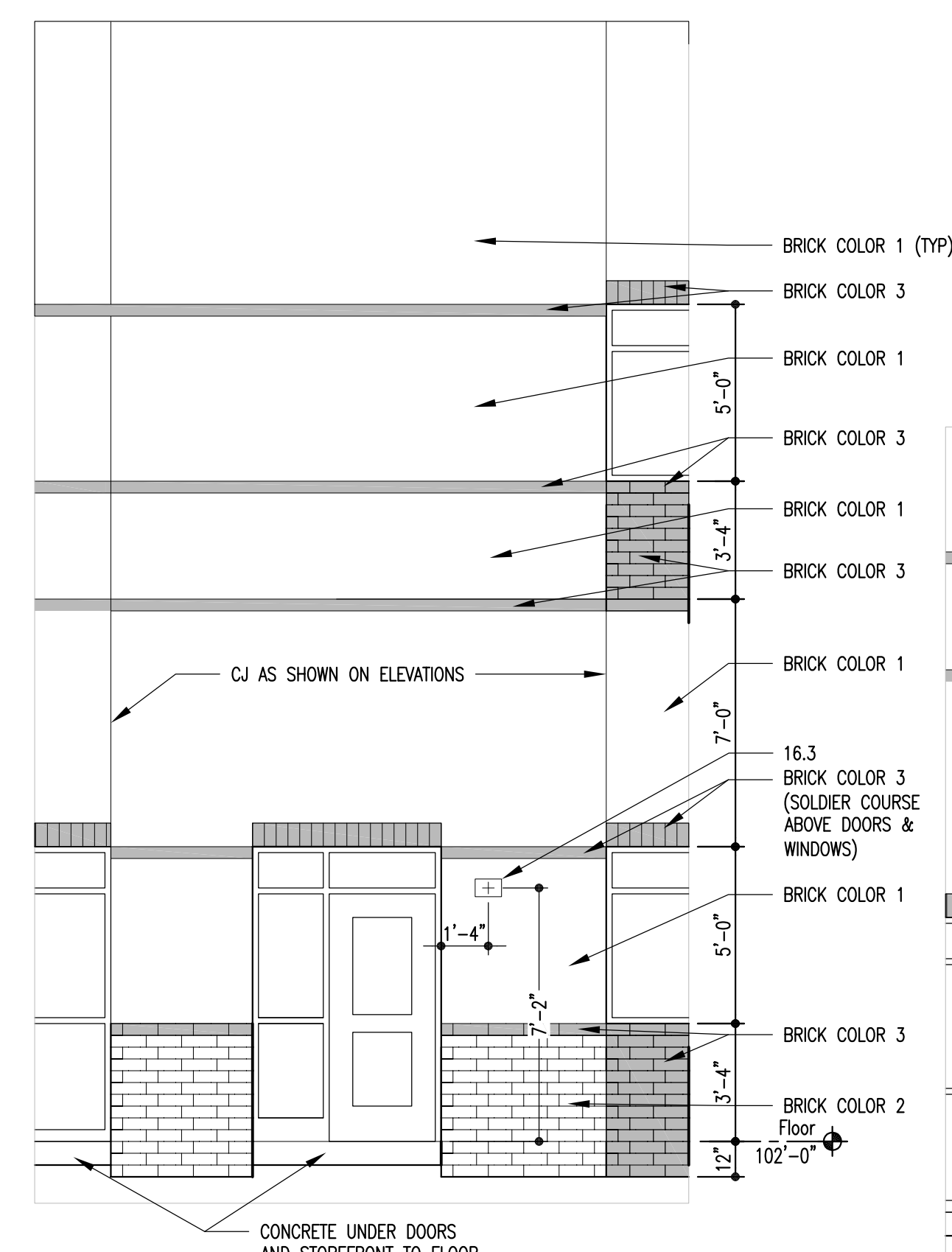
Northwest Elevation
Scale: 1/8" = 1'-0"



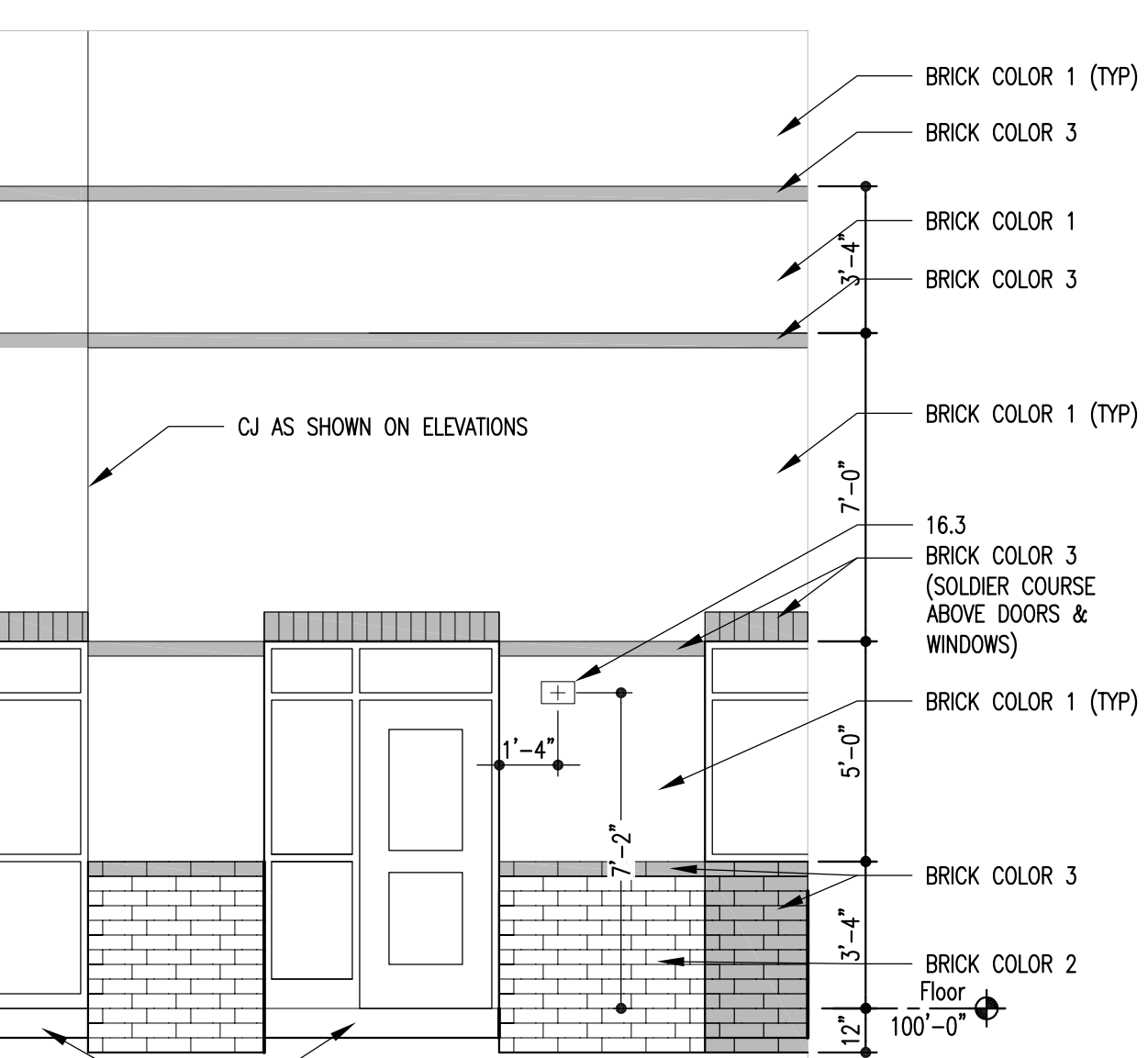
Media Center Northeast Elevation
Scale: 1/8" = 1'-0"



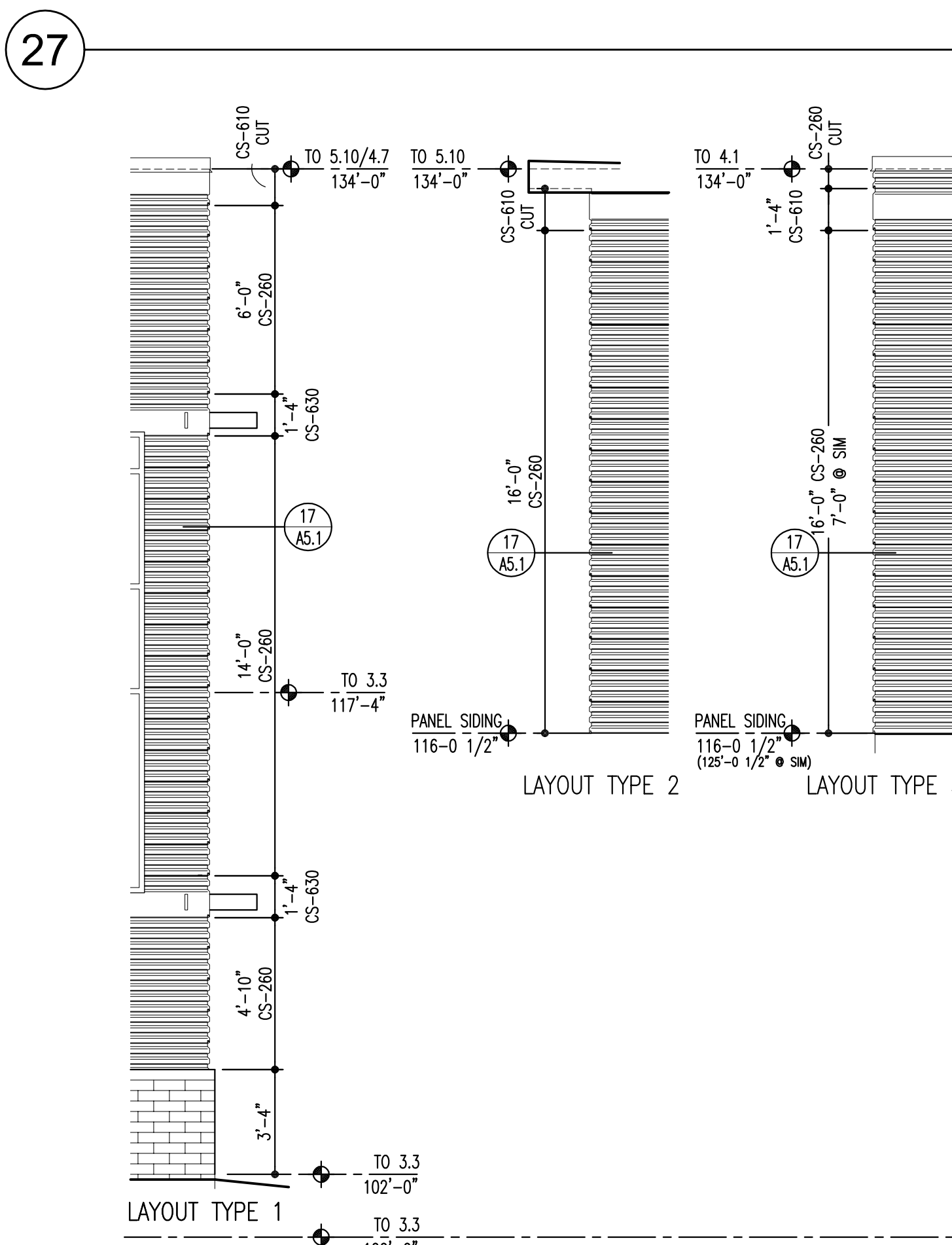
South Elevation
Scale: 1/8" = 1'-0"



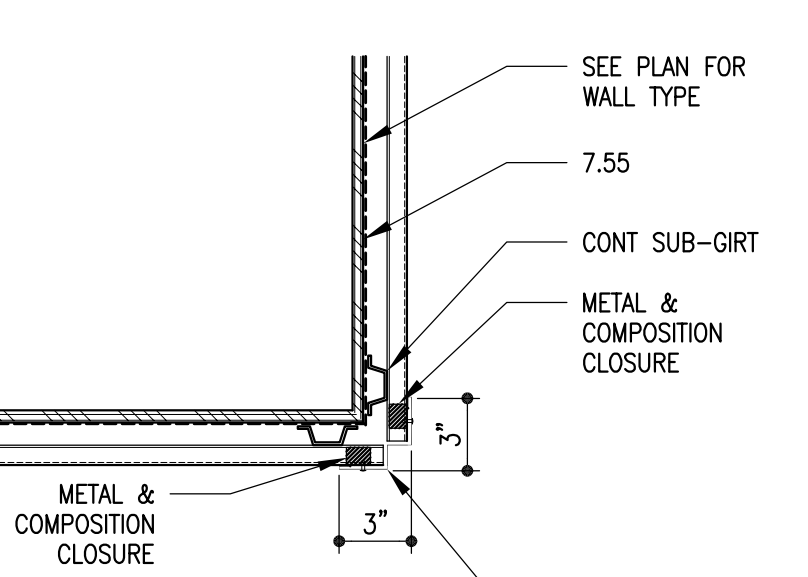
Brick Layout
Scale: 1/4" = 1'-0"



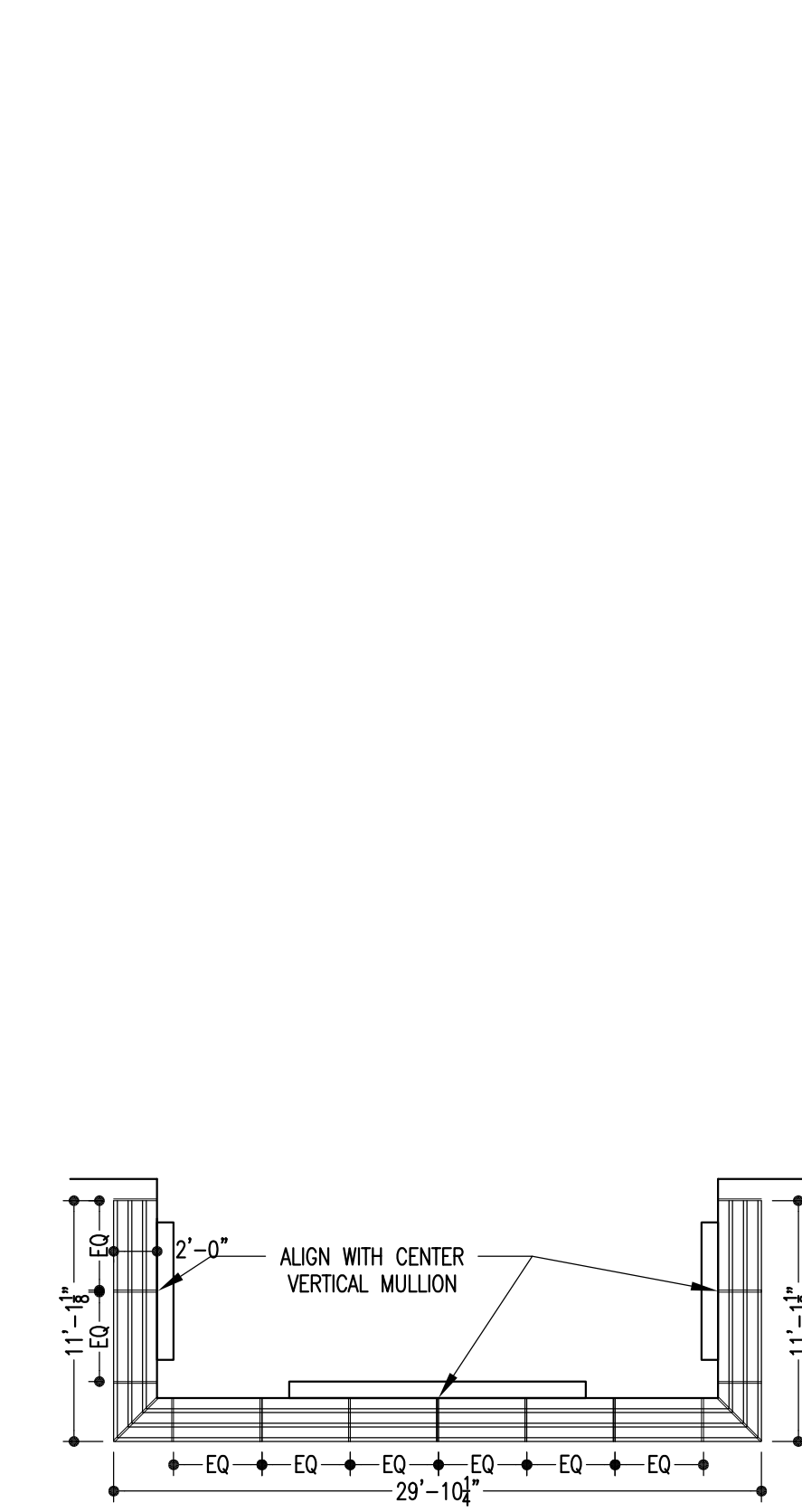
Sunshade Type 1 Plan
Scale: 1/8" = 1'-0"



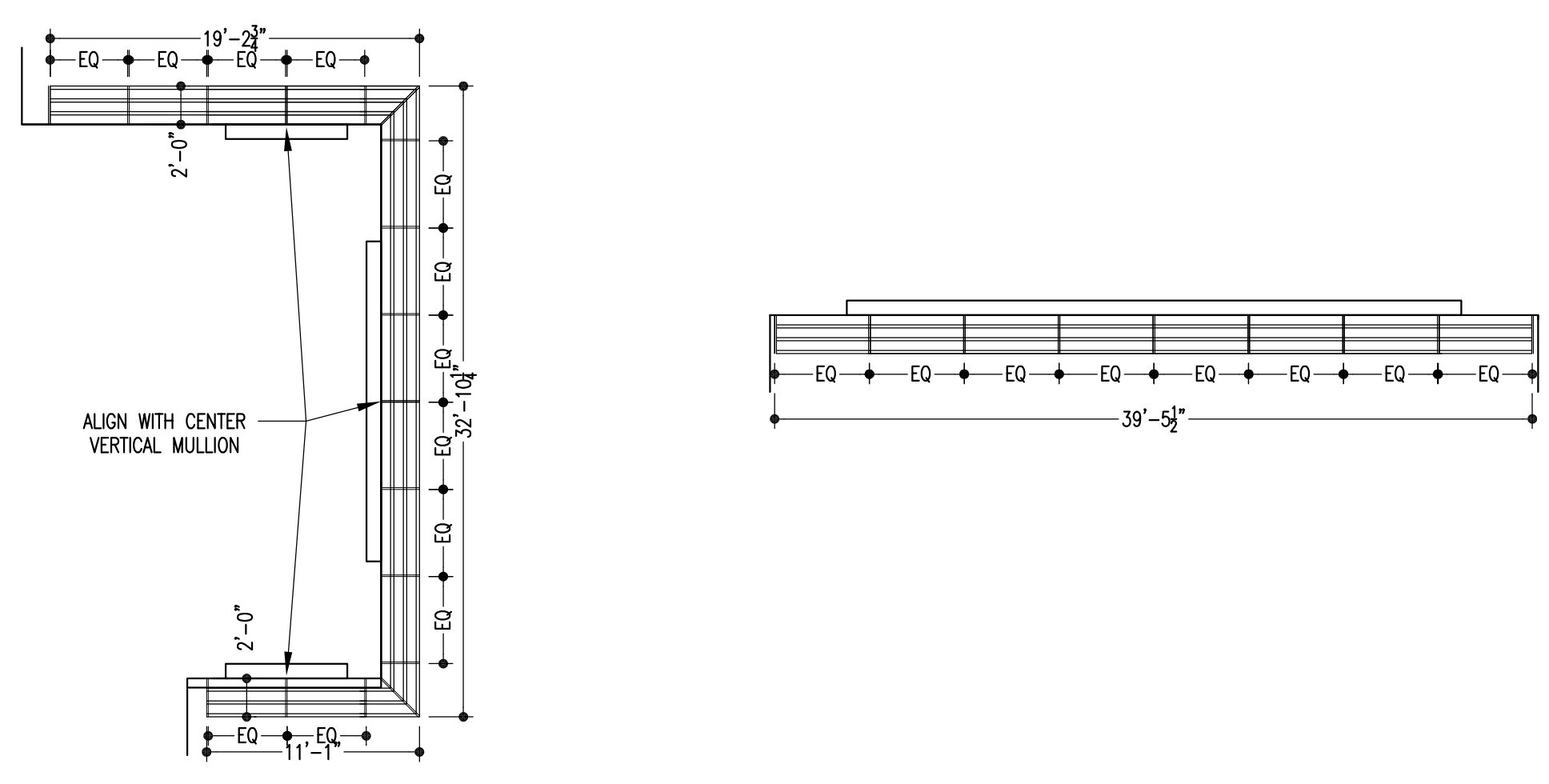
Metal Panel Layout
Scale: 1/4" = 1'-0"



Typical Corner @ Metal Panel
Scale: 1 1/2" = 1'-0"



Sunshade Type 2 Plan
Scale: 1/8" = 1'-0"



Sunshade Type 3 Plan
Scale: 1/8" = 1'-0"

Sunshade Type 4 Plan
Scale: 1/8" = 1'-0"

Key Notes List

- 2.1 DRILLED CONC PER
- 2.2 BACILL
- 2.3 FREE-DRAINING
- 2.4 GRANULAR BACKFILL
- 2.5 COMPACTED SUBGRADE
- 2.6 ASPHALTIC BASE COURSE
- 2.7 ASPHALTIC CONC PAVING
- 2.8 CONCRETE PAWING
- 2.9 CONC WALK
- 2.10 TENSILE COURT SURFACING
- 2.11 TRUCK SURFACING
- 2.12 BASEBALL FIELD FORMING
- 2.13 CONC CURB & WALL FRAMING
- 2.14 ASPHALT CURB
- 2.15 MANGROVE TIMBER
- 2.16 CHAIN LINK FENCE
- 2.17 CHAIN LINK GATE
- 2.18 BACILL
- 2.19 MASONRY RETAINING WALL SYSTEM
- 2.20 TREE GRATE
- 2.21 FILTER FABRIC
- 2.22 PERFORATED DRAIN PIPE
- 2.23 UNPERFORATED DRAIN PIPE
- 2.24 TRENCH DRAIN
- 2.25 CONC CHANNEL
- 2.26 INLET
- 2.27 MANHOLE
- 2.28 CONC HEAD WALL
- 2.29 CONCRETE END SECTION
- 3.1 CONC FOUNDATION
- 3.2 CONC GRADE BEAM
- 3.3 CONC SLAB
- 3.4 UNDERSLAB GRAVEL BED
- 3.5 UNDERSLAB VAPOR BARRIER
- 3.6 UNDERSLAB
- 3.7 BUTTER LAYER
- 3.8 CONC COLUMN
- 3.9 CONC WALL
- 3.10 PRECAST CONC COL BEAM
- 3.11 PRECAST CONC BEAM
- 3.12 PRECAST CONC WALL PANEL
- 3.13 PRECAST CONC DOUBLE TEE
- 3.14 CONC SPLASH BLOCK
- 3.15 1\"/>

L K A PART N E R S
INCORPORATED
A Professional Corporation for Architecture and Planning

430 North Tejon Street Suite 200
Colorado Springs Colorado 80903
tele: 719.473.9446 fax: 719.473.9448
web: www.lkapartners.com

Copyright 2018 The LKA Partners, Inc. This document and the information contained herein may not be reproduced or excerpted from without the express written permission of The LKA Partners, Inc. Unauthorized copying, disclosure or construction use are prohibited by copyright law.

New Widefield PK-8 School
11060 Fontaine Blvd., Widefield, CO

Widefield School District 3
1820 Main Street
Colorado Springs, CO 80911

WIDEFIELD SCHOOL DISTRICT 3
PRIDE. TRADITION. INNOVATION.

Development Plan

Drawn: _____ Production: _____
Checked: _____
Issued: 15 May 2018
Revised: _____

Area Key Plan

True North
Plan North

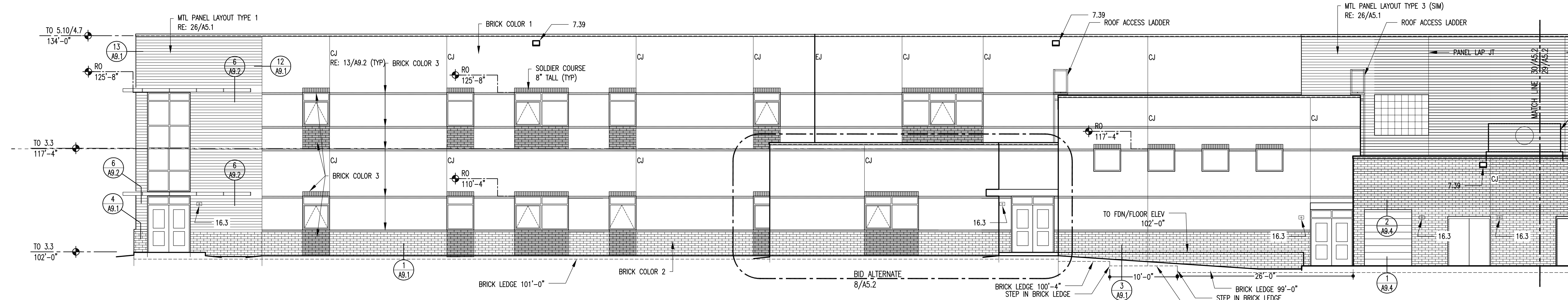
Building Elevations
A5.1

Project No. 17.001
The LKA Partners Incorporated

NOTE: THE KEYNOTE REFERENCE NUMBERS SHOWN ABOVE MAY OR MAY NOT CORRESPOND TO SPECIFICATION SECTIONS IN THE PROJECT MANUAL.

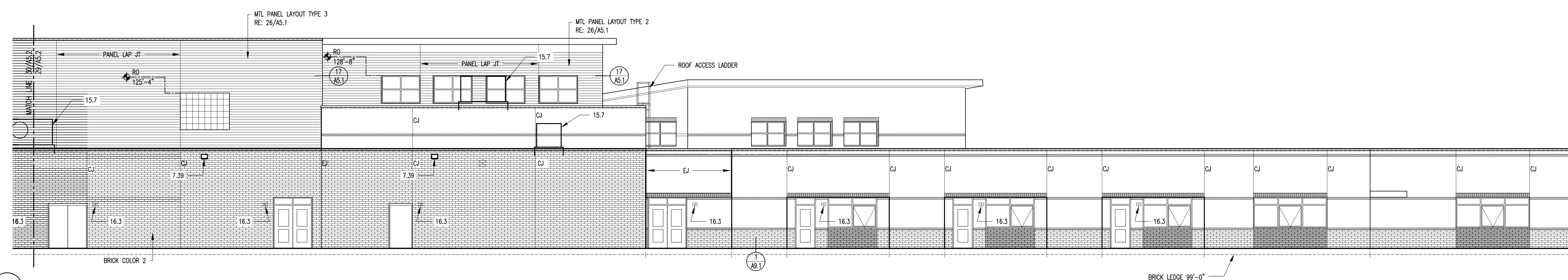
Key Notes List

- 21 DRILLED CONC PER
- 22 BRICK
- 23 FREE-DRAINING
- 24 COMPACTED SUBGRADE
- 25 AGGREGATE BASE
- 26 ASPHALTIC CONC COURSE
- 27 CONCRETE PAVING
- 28 CONC WALK
- 29 BRICK PAVR
- 30 TRINS COURT
- 31 TRICK SURFACING
- 32 BASEBALL FIELD SURFACING
- 33 CONC CURB & CUTTER
- 34 ASPHALT CURB
- 35 LANDSCAPE TIMBER
- 36 CHAIN LINK FENCE
- 37 CHAIN LINK GATE
- 38 MCKSTOP
- 39 MASONRY RETAINING WALL SYSTEM
- 40 TREE GRATE
- 41 FILTER FABRIC
- 42 PERFORATED DRAIN PIPE
- 43 UNPERFORATED DRAIN PIPE
- 44 TRENCH DRAIN
- 45 FRENCH DRAIN
- 46 CONC CHANNEL
- 47 INLET
- 48 MANHOLE
- 49 CONC HEAD WALL
- 50 CONC PIPE FLARED END SECTION
- 51 PORTLAND CEMENT PLASTER
- 52 ACUSTICAL PLASTER
- 53 VENEER PLASTER
- 54 THIN COAT PLUCO
- 55 PORTLAND CEMENT STUCCO
- 56 DRYWALL STUD
- 57 ACUSTICAL INSUL
- 58 OPSUM BOARD
- 59 ABUSE RESISTANT OPSUM BOARD
- 60 WATER RESISTANT OPSUM BOARD
- 61 OPSUM SHEATHING
- 62 SHAFTRAIL SYSTEM
- 63 SHAFTRAIL BOARD
- 64 SUSPENDED CEILING BLOCK
- 65 ACUSTICAL TILE
- 66 QUARRY TILE
- 67 QUARRY TILE BASE FABRIC
- 68 CERAMIC TILE
- 69 CERAMIC TILE BASE
- 70 PORCELAIN TILE
- 71 WOOD FLOOR
- 72 PORCELAIN TILE WATERSTOP
- 73 VAPOR BARRIER
- 74 VAPOR BARRIER FLOORING
- 75 VINYL COMPOSITION TILE
- 76 SHEET VINYL FLOORING
- 77 SPANLESS TROMBELED FLOORING
- 78 CARPET
- 79 RUBBER BASE
- 80 RUBBER TREADS & RUBBER STAR STRIP
- 81 ANCHOR
- 82 ANCHOR W/ WELDING
- 83 ANCHOR W/ WELDING
- 84 ANCHOR W/ WELDING
- 85 ANCHOR W/ WELDING
- 86 ANCHOR W/ WELDING
- 87 ANCHOR W/ WELDING
- 88 ANCHOR W/ WELDING
- 89 ANCHOR W/ WELDING
- 90 ANCHOR W/ WELDING
- 91 ANCHOR W/ WELDING
- 92 ANCHOR W/ WELDING
- 93 ANCHOR W/ WELDING
- 94 ANCHOR W/ WELDING
- 95 ANCHOR W/ WELDING
- 96 ANCHOR W/ WELDING
- 97 ANCHOR W/ WELDING
- 98 ANCHOR W/ WELDING
- 99 ANCHOR W/ WELDING
- 100 ANCHOR W/ WELDING
- 101 METAL TOILET PARTITION
- 102 CERAMIC TOILET PARTITION
- 103 BRIML SCREEN
- 104 COMPARTMENT
- 105 CURBULE TRACK
- 106 CURTAIN
- 107 METAL WALL
- 108 INTERIOR SIGNAGE
- 109 LOCKER
- 110 FIRE EXTINGUISHER CABINET
- 111 FIRE EXTINGUISHER BRACKET
- 112 WIRE MESH PARTITION
- 113 FOLDING GATE
- 114 FOLDING GATE
- 115 FOLDING GATE
- 116 FOLDING GATE
- 117 FOLDING GATE
- 118 FOLDING GATE
- 119 FOLDING GATE
- 120 FOLDING GATE
- 121 PLATFORM CURTAIN
- 122 BACKDROP
- 123 CURTAIN
- 124 PROJECTION SCREEN
- 125 TV/MONITOR/AVR MOUNTING BRACKET
- 126 MAT MOVER
- 127 SCISSORBOARD
- 128 BASKETBALL BACKSTOP
- 129 OVM DIVER
- 130 CURTAIN
- 131 OVM WALL PAD
- 132 OVM FLOOR
- 133 BLEE
- 134 CERAMIC KILN
- 135 FLAMMAGE CABINET
- 136 VENTED ACID STORAGE CABINET
- 137 PLASTIC LAMINATE COUNTERTOP
- 138 KEYBOARD TRAY
- 139 ARTICULATING KEYBOARD TRAY
- 140 PENNIL DRAWER
- 141 CASWORK LOCK
- 142 BACKSPLASH
- 143 EPOXY RESIN COUNTERTOP
- 144 EPOXY RESIN SINK
- 145 FLOOR MAT
- 146 FLOOR MAT FRAME
- 147 WINDOW BLINDS
- 148 SUN CONTROL SHADE
- 149 ALUMINUM SEATING (DUET W/ W/)
- 150 OVM BLEACHERS
- 151 TELESCOPING OVM BLEACHERS
- 152 PORTABLE OVM BLEACHERS
- 153 EXT BLEACHERS
- 154 WHEELCHOW LIFT
- 155 PLUMBING PIPING
- 156 GAS PIPING
- 157 FIRE SPRINKLER PIPING
- 158 FIRE SPRINKLER HEAD
- 159 EXH HOOD
- 160 MECH DUCTWORK
- 161 MECH RTU
- 162 ROOF EXH FAN
- 163 ROOF EXH VENT
- 164 ROOF VENTILATOR
- 165 BOILER STACK & JOINT CAP
- 166 FUE & VENT CAP
- 167 ELEC CONDUIT
- 168 ELEC OUTLET
- 169 LIGHT FIXTURE
- 170 ELEC/ LIGHT SWITCH
- 171 ELEC JUNCTION BOX
- 172 EXIT LIGHT
- 173 HORN
- 174 STROBE
- 175 ALARM STATION
- 176 DOOR ACTUATOR
- 177 MASTER CLOCK
- 178 FIRE ALARM CONTROL PANEL
- 179 FIRE ALARM DRAWING & ANNUNCIATION PANEL
- 180 COMMUNICATIONS CONDUIT/ WIRING
- 181 COMMUNICATIONS EQUIPMENT
- 182 COMMUNICATIONS MATERIAL
- 183 COMMUNICATIONS CONDUIT/ WIRING
- 184 SECURITY SYSTEM
- 185 WEATHER RESISTIVE BARRIER CAMERA
- 186 SECURITY CAMERA
- 187 SECURITY MONITOR



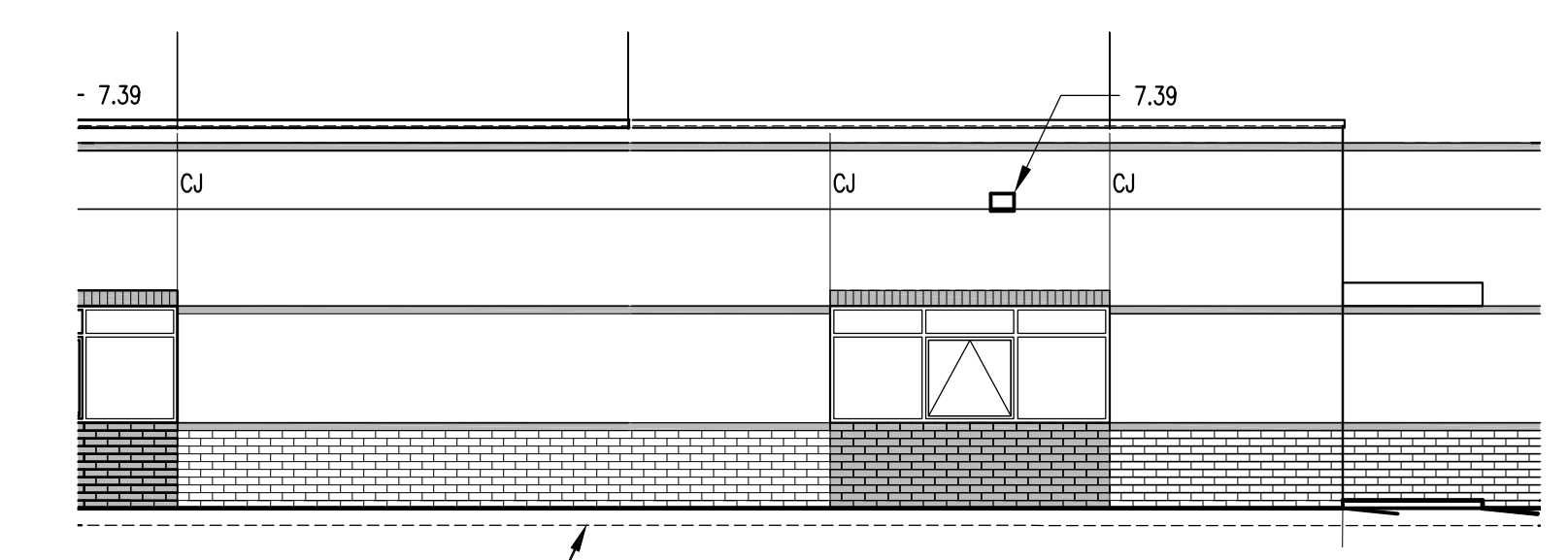
North Elevation
Scale: 1/8" = 1'-0"

30



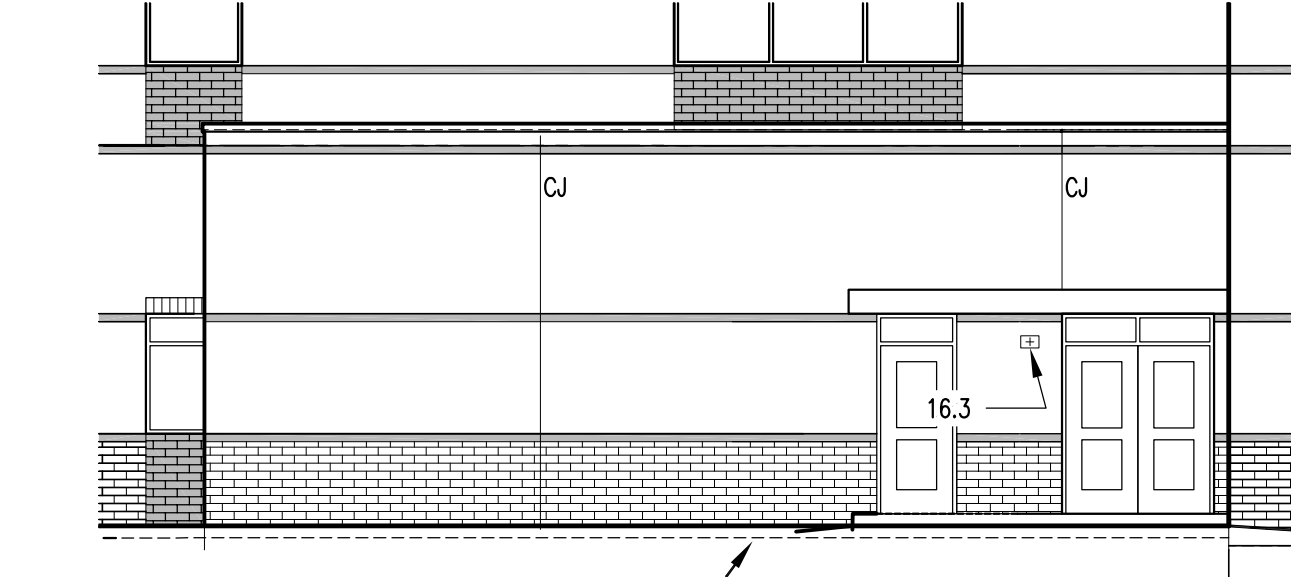
North Elevation
Scale: 1/8" = 1'-0"

29



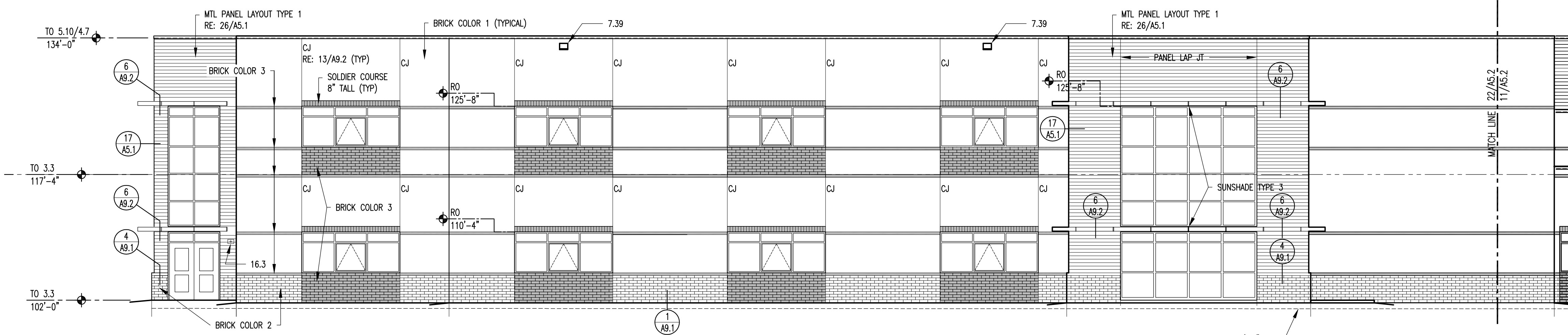
East Elevation (Bid Alternate)
Scale: 1/8" = 1'-0"

13



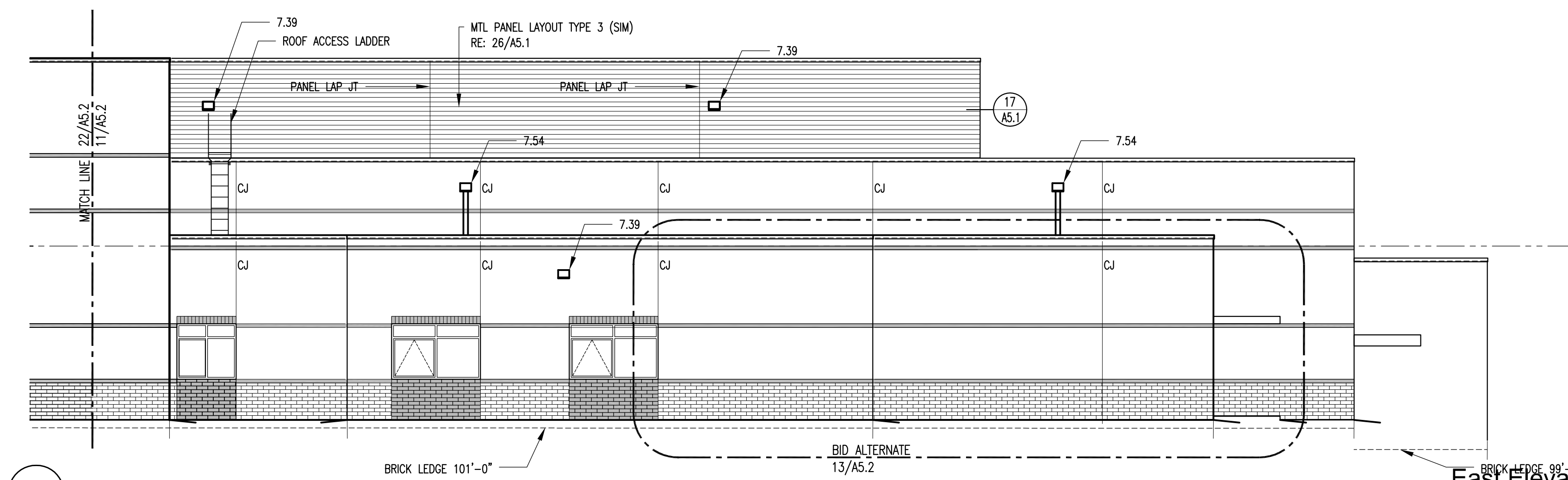
North Elevation (Bid Alternate)
Scale: 1/8" = 1'-0"

8



East Elevation
Scale: 1/8" = 1'-0"

22



East Elevation
Scale: 1/8" = 1'-0"

11

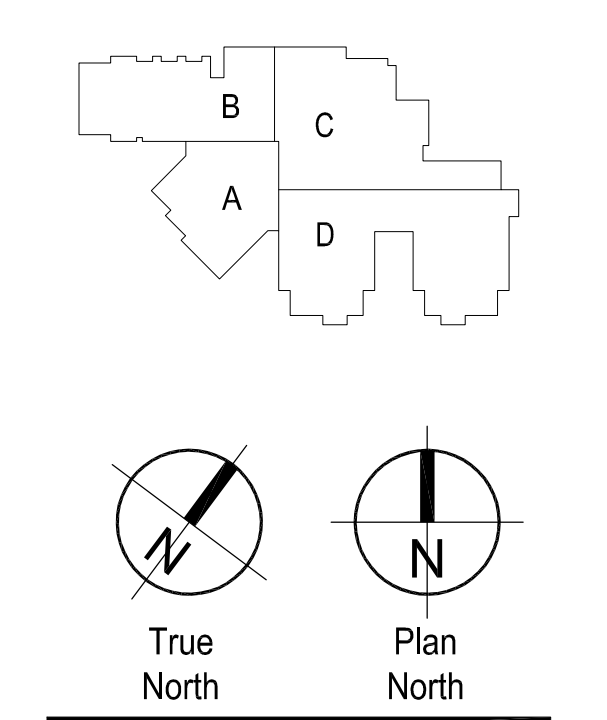
New Widefield PK-8 School
11060 Fontaine Blvd., Widefield, CO
Widefield School District 3
1820 Main Street
Colorado Springs, CO 80911



Development Plan

Drawn: _____ Production
Checked: _____
Issued: 15 May 2018
Revised: _____

Area Key Plan

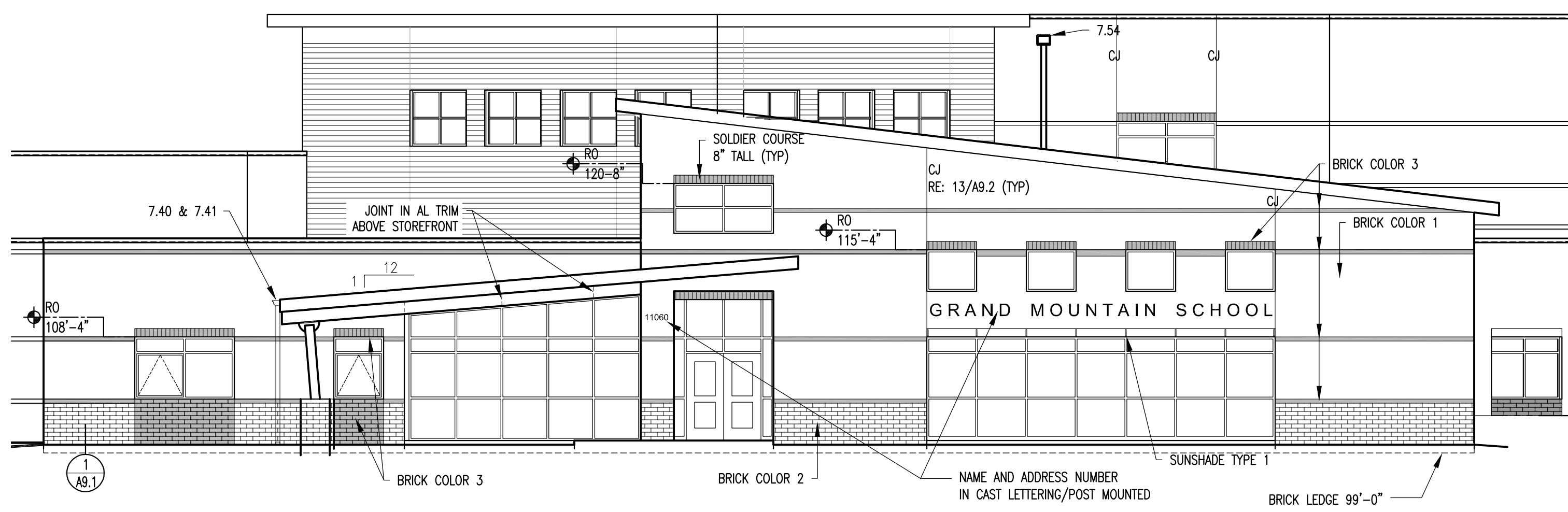


Building Elevations

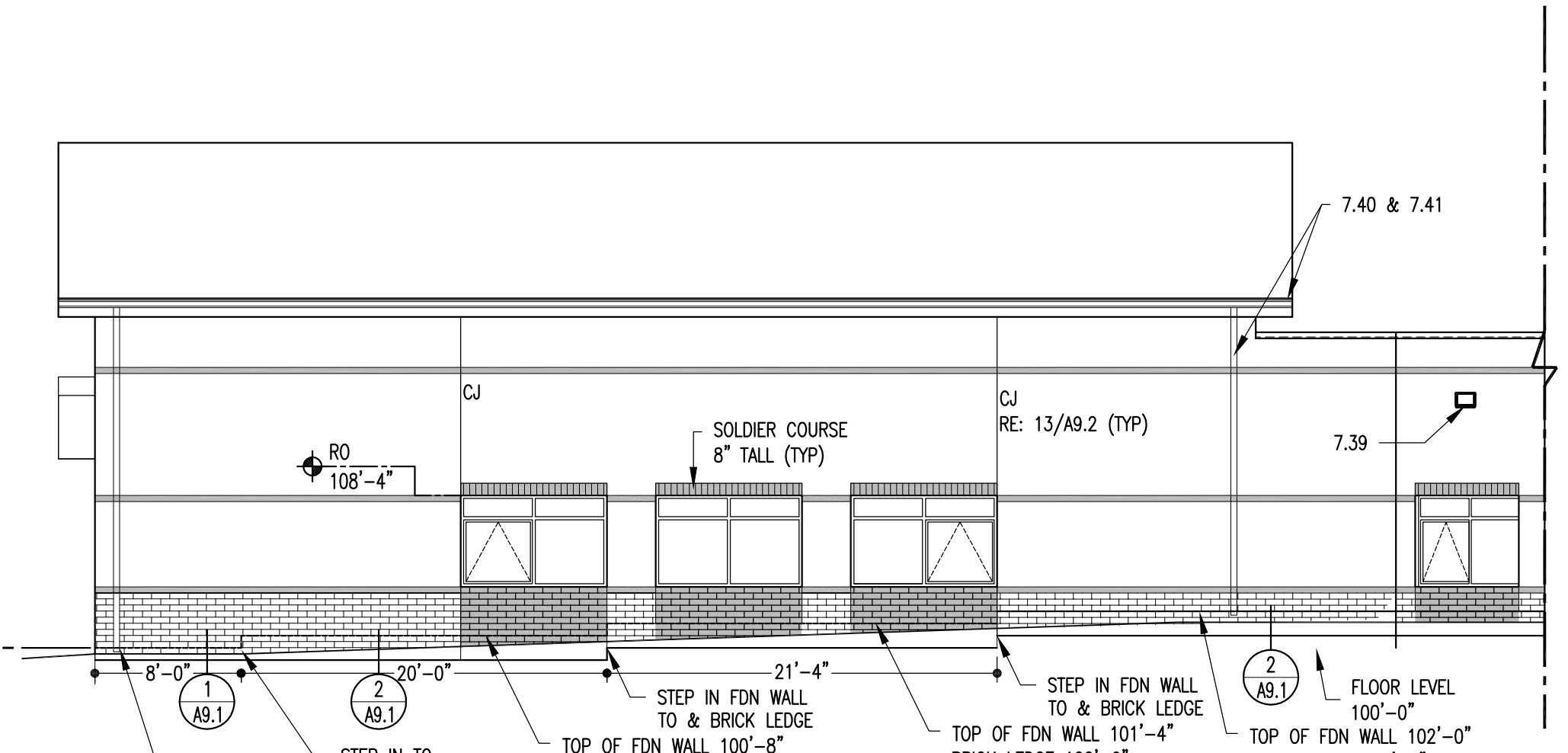
A5.2

Project No. 17.001
The LKA Partners Incorporated

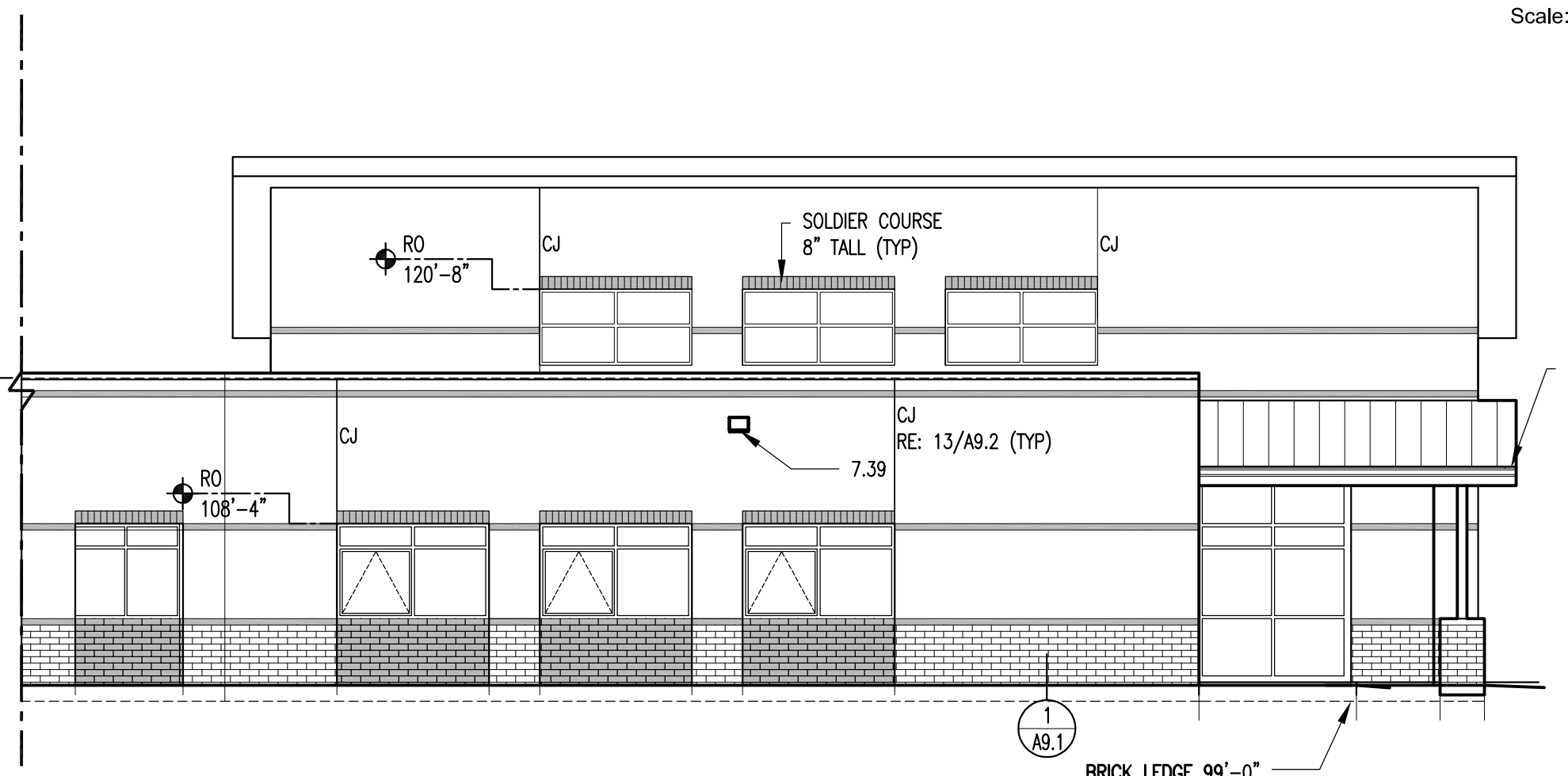
NOTE: THE KEYNOTE REFERENCE NUMBERS SHOWN ABOVE MAY OR MAY NOT CORRESPOND TO SPECIFICATION SECTIONS IN THE PROJECT MANUAL.



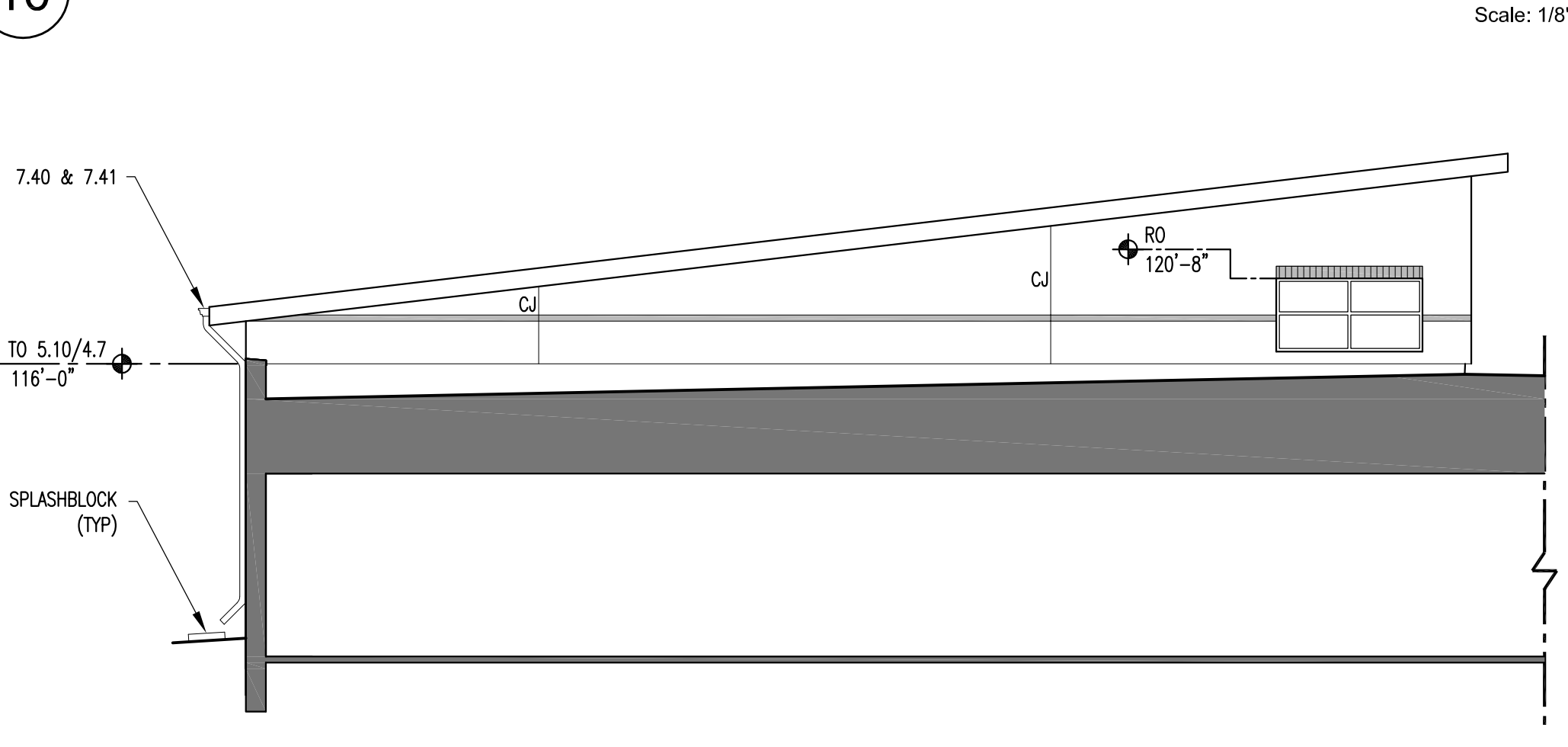
Southwest Elevation
Scale: 1/8" = 1'-0"



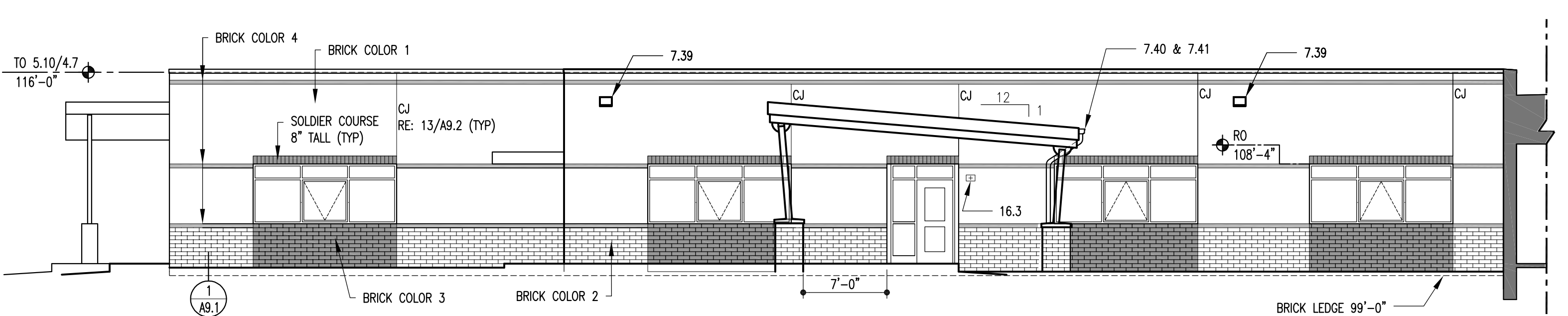
Southeast Elevation
Scale: 1/8" = 1'-0"



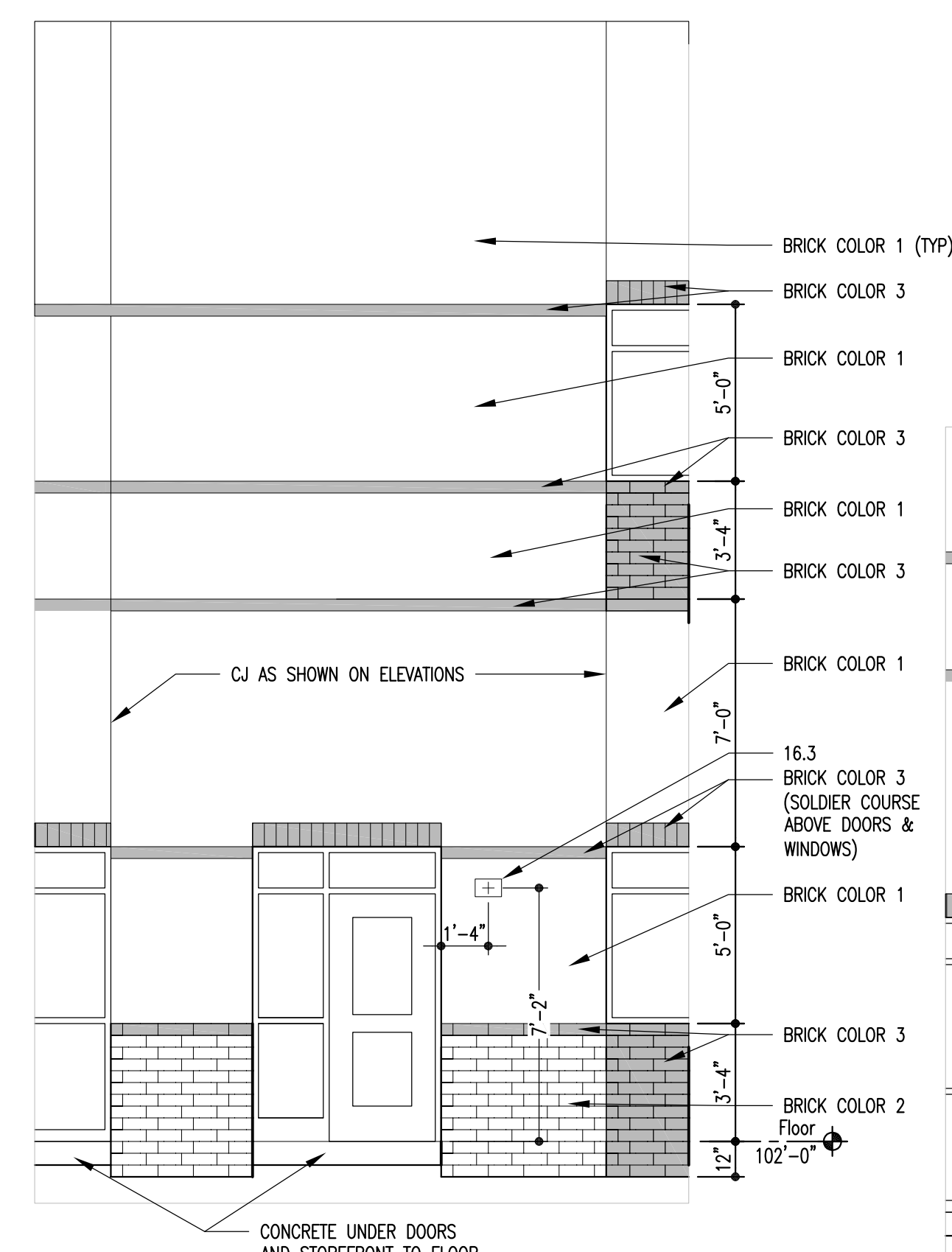
Northwest Elevation
Scale: 1/8" = 1'-0"



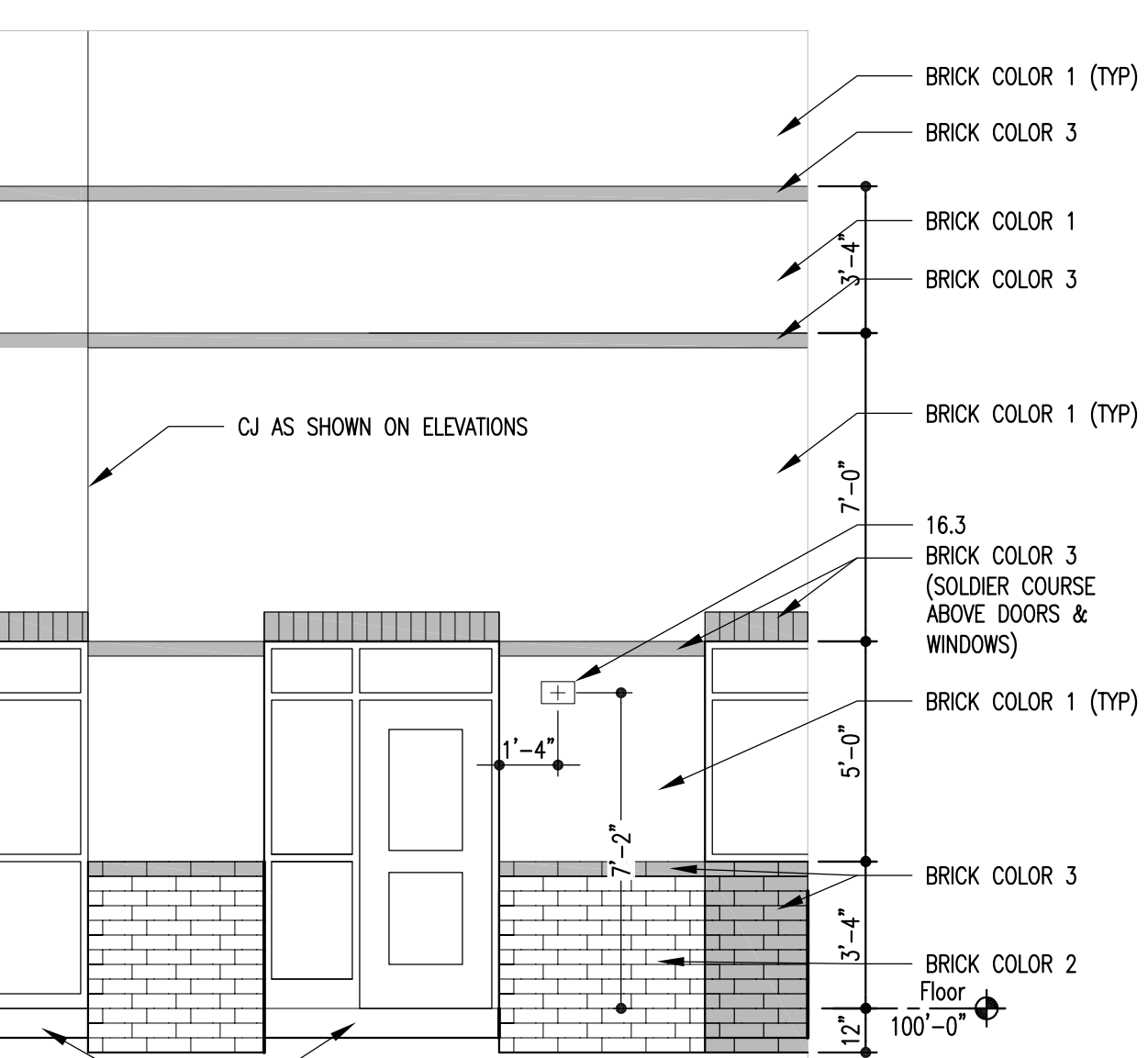
Media Center Northeast Elevation
Scale: 1/8" = 1'-0"



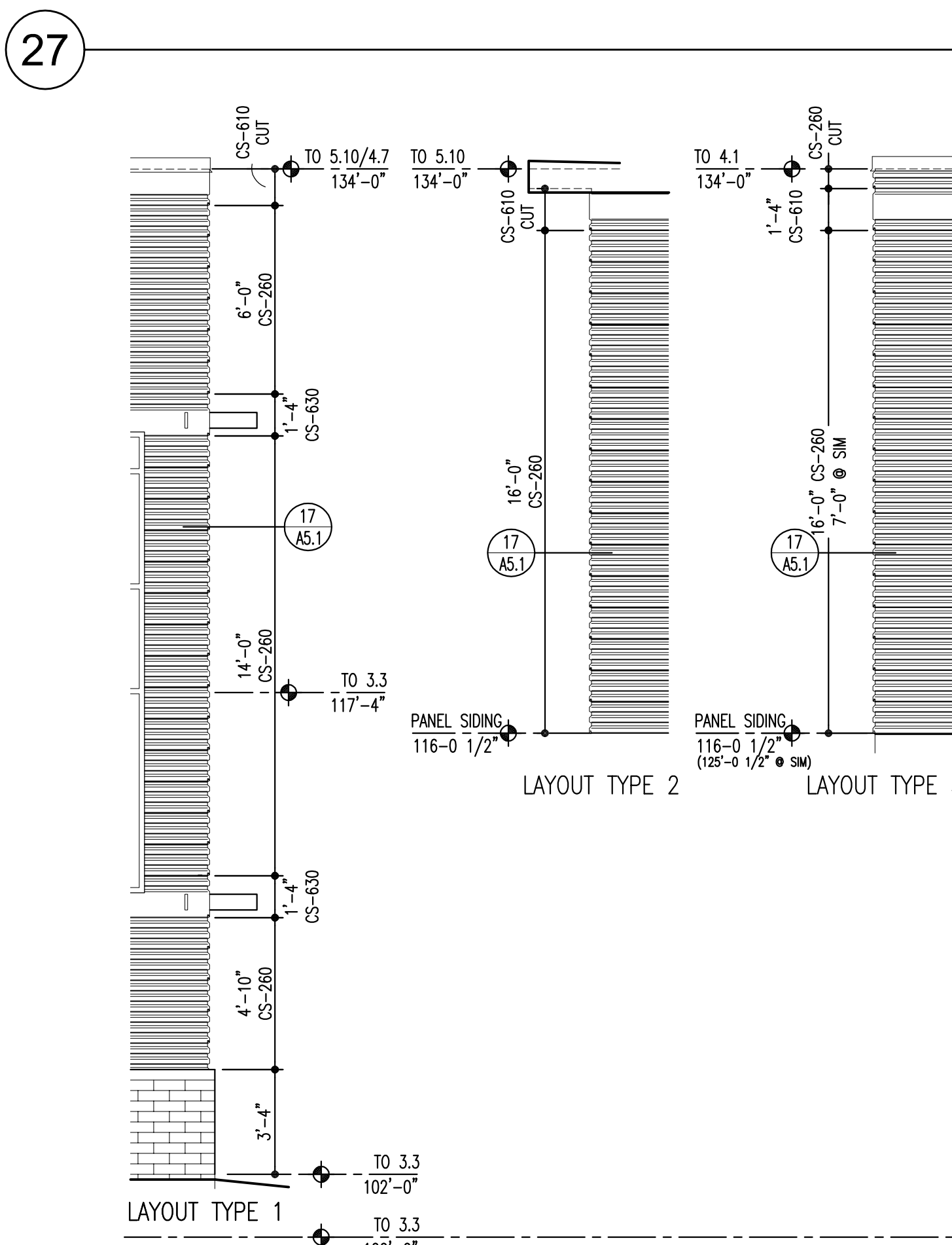
South Elevation
Scale: 1/8" = 1'-0"



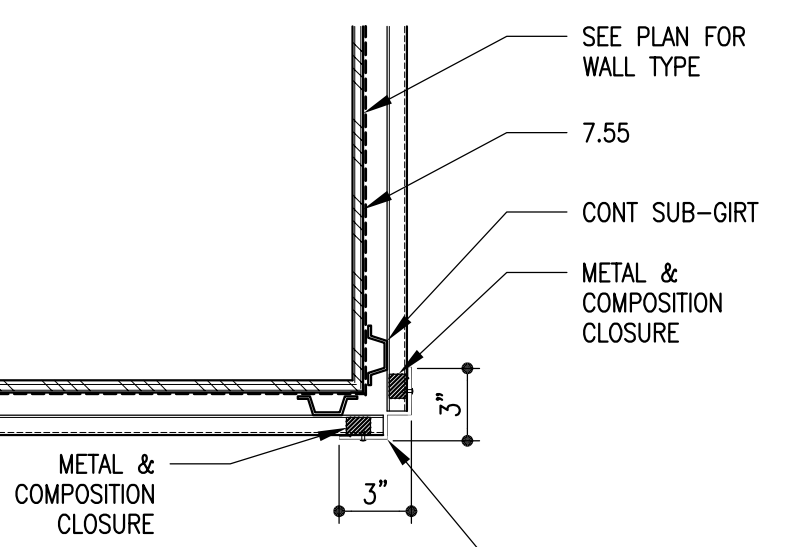
Brick Layout
Scale: 1/4" = 1'-0"



Sunshade Type 1 Plan
Scale: 1/8" = 1'-0"



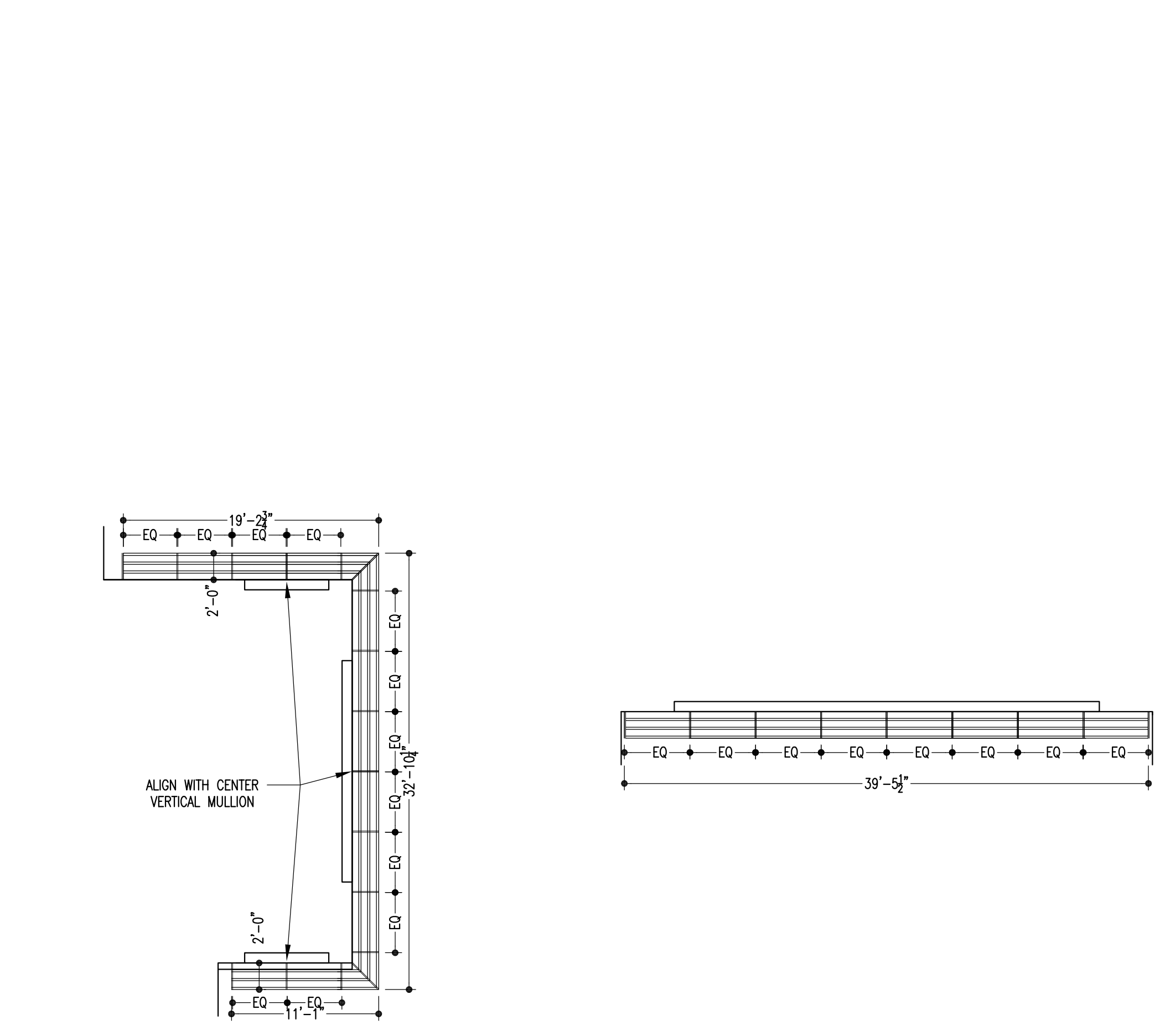
Metal Panel Layout
Scale: 1/4" = 1'-0"



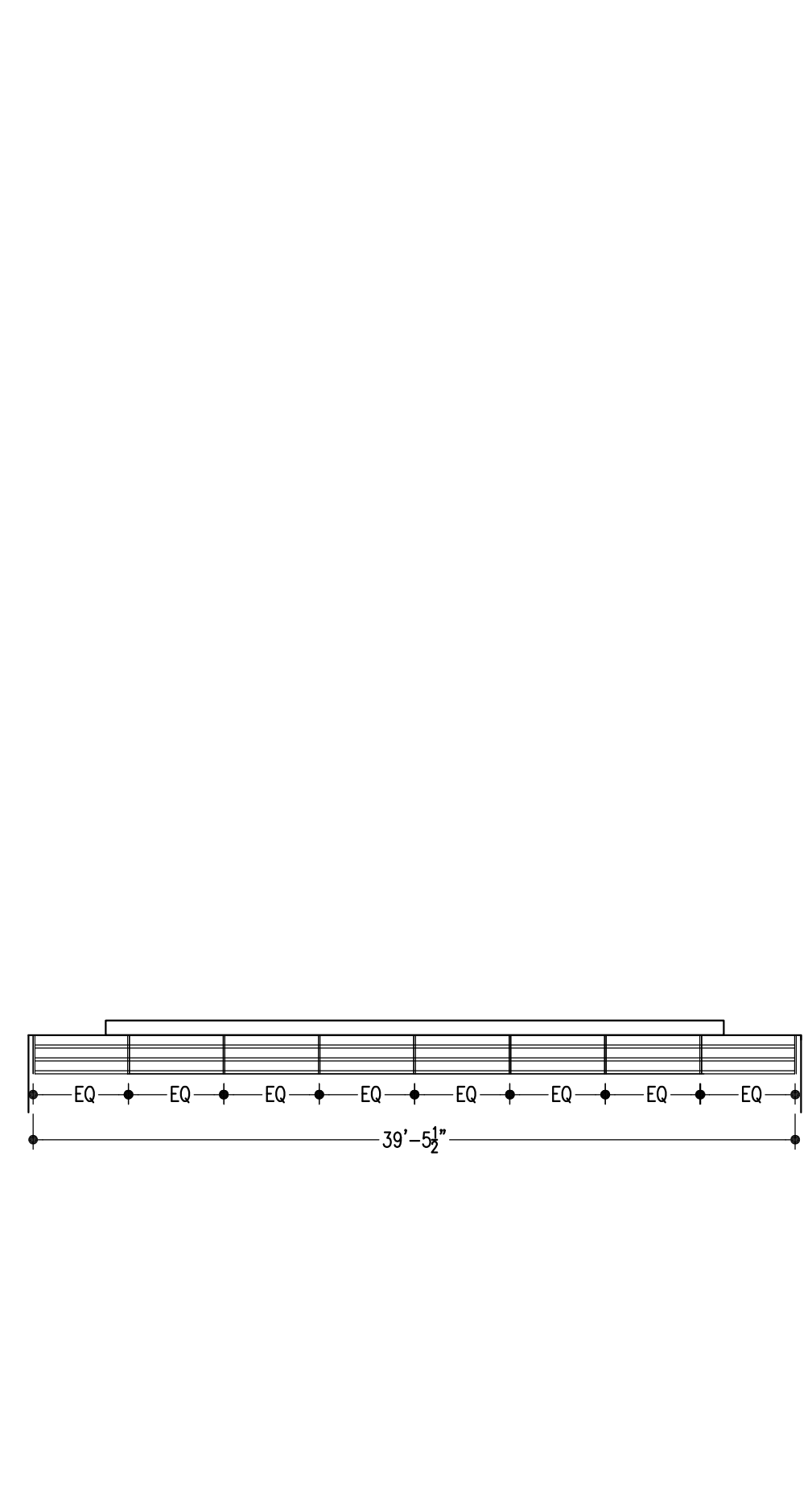
Typical Corner @ Metal Panel
Scale: 1 1/2" = 1'-0"



Sunshade Type 2 Plan
Scale: 1/8" = 1'-0"



Sunshade Type 3 Plan
Scale: 1/8" = 1'-0"



Sunshade Type 4 Plan
Scale: 1/8" = 1'-0"

Key Notes List

- 2.1 DRILLED CONC PER
- 2.2 BACILL
- 2.3 FREE-DRAINING
- 2.4 COMPACT SURFACE
- 2.5 AGGREGATE BASE
- 2.6 ASPHALTIC CONC PAVING
- 2.7 CONCRETE PAWING
- 2.8 CONC WALK
- 2.9 BRICK PAVER
- 2.10 TENS COURT SURFACING
- 2.11 TRUCK SURFACING
- 2.12 BASEBALL FIELD
- 2.13 CONC CURB & GUTTER
- 2.14 ASPHALT CURB
- 2.15 GINGERSHAF TIMBER
- 2.16 CHAIN LINK FENCE
- 2.17 CHAIN LINK GATE
- 2.18 BACILL
- 2.19 MASONRY RETAINING WALL SYSTEM
- 2.20 TREE GRATE
- 2.21 FILTER FABRIC
- 2.22 PERFORATED DRAIN
- 2.23 UNPERFORATED DRAIN PIPE
- 2.24 TRENCH DRAIN
- 2.25 CONC CHANNEL
- 2.26 INLET
- 2.27 MANHOLE
- 2.28 CONC HEAD WALL
- 2.29 CONCRETE
- 3.1 CONC FOUNDATION
- 3.2 CONC GRADE BEAM
- 3.3 CONC SLAB
- 3.4 UNDERSLAB GRAVEL BED
- 3.5 UNDERSLAB VAPOR BARRIER
- 3.6 UNDERSLAB
- 3.7 BUTYL LAYER
- 3.8 CONC COLUMN
- 3.9 CONC WALL
- 3.10 PRECAST CONC COL
- 3.11 PRECAST CONC BEAM
- 3.12 PRECAST CONC WALL PANEL
- 3.13 PRECAST CONC DOUBLE TEE
- 3.14 CONC SPLASH BLOCK
- 3.15 1T WEIGHT CONC
- 3.16 REINFORCING BAR
- 3.17 WELDED WIRE FABRIC
- 3.18 PREMOULDED JOINT FILLER
- 3.19 WATERSTOP
- 4.1 CMU
- 4.2 CMU-SOLID UNIT
- 4.3 CMU-GROUTED SOLID
- 4.4 CMU-SAND FILLED
- 4.5 CMU-ACoustICAL TILE
- 4.6 BOND BEAM
- 4.7 FACE BRICK
- 4.8 GASS BLOCK
- 4.9 GROUT FILL
- 4.10 BRICK MASONRY REINFORCING
- 4.11 MASONRY ANCHOR
- 4.12 DOWEL ANCHOR
- 4.13 MASONRY VENEER WALL TIES
- 4.14 MASONRY FLASHING PANEL
- 4.15 WEEP SYSTEM
- 4.16 SIM BRUSH WOOD PANEL
- 4.17 NON-ASPHALTIC FIBERBOARD
- 4.18 CONC PAVER
- 4.19 MORTAR DIVERter
- 5.1 STEEL COLUMN
- 5.2 STEEL BEAM
- 5.3 STEEL JOIST
- 5.4 STEEL ANGLE
- 5.5 WELD PLATE
- 5.6 STEEL ROOF DECK
- 5.7 STEEL ACoustICAL ROOF DECK
- 5.8 CORRUGATED METAL ROOF DECK
- 5.9 STRUCTURAL STUD/JOIST
- 5.10 COUL-FORMED METAL FRAMING
- 5.11 STEEL LADDER
- 5.12 CONC FILLED STEEL PAIR STAR TRAD & RISER
- 5.13 MANUFACTURED STEEL STAR SYSTEM
- 5.14 ABRASIVE STAR
- 5.15 STEEL RAILING NOSING
- 5.16 STEEL RAILING SLIWE
- 5.17 SLUMP PAN
- 5.18 GRATING
- 5.19 CHECKERED PLATE
- 5.20 STEEL COL COVER
- 5.21 EXP JOINT COVER
- 5.22 BOLARD POST
- 6.1 WOOD FRAMING
- 6.2 WOOD STUD /JOIST
- 6.3 WOOD BLOCKING
- 6.4 WOOD FURRING
- 6.5 WOOD NAILER
- 6.6 WOOD SHIM
- 6.7 WOOD TRUSS
- 6.8 GLED LAMINATED TIMBER
- 6.9 LAMINATED VENEER LUMBER
- 6.10 PLYWOOD SHEATHING
- 6.11 ORIENTED STRAND BOARD
- 6.12 PARTICLE BOARD
- 6.13 TEMPERED HORIZONTAL BOARD
- 6.14 WOOD GIRD
- 6.15 WOOD LAMINATE
- 6.16 WOOD FLOORING
- 6.17 WOOD CEILING
- 6.18 WOOD HANDRAIL
- 6.19 WOOD TRIM
- 6.20 WOOD SHELF
- 7.1 DAMPROOFING
- 7.2 SELF-ADHERED SHEET MEMBRANE
- 7.3 WATER REPELLENT/GRAPHTI CONTROL
- 7.4 WATER REPELLENT/GRAPHTI CONTROL
- 7.5 RIGID INSULATION
- 7.6 TAPERED INSUL
- 7.7 BATT INSULATION
- 7.8 BURNER INSULATION
- 7.9 LOOSE FILL INSUL
- 7.10 FOAMED INSULATION
- 7.11 BURNER FIBERPROOFING (DUCT WORK)
- 7.12 METAL BLINDING PANEL
- 7.13 PREN MET SIDING
- 7.14 WOOD SIDING
- 7.15 FIBERGLASS SHINGLES
- 7.16 PREN MET ROOFING
- 7.17 PREN MET SOFFIT
- 7.18 SINGLE-PY MEMBRANE ROOFING
- 7.19 BUILT-UP ROOFING
- 7.20 UNDERLAYMENT
- 7.21 SELF-ADHERED UNDERLAYMENT
- 7.22 2" FURRING
- 7.23 EXT DECK COATING
- 7.24 ROOF WALKWAY PAVR
- 7.25 ROOF WALKWAY PADS
- 7.26 CANT STRIP
- 7.27 ROSE FLASHING
- 7.28 FLEXIBLE FLASHING
- 7.29 MET FLASHING
- 7.30 MET RESLET
- 7.31 MET SPRING FLG
- 7.32 MET COUNTER FLG
- 7.33 MET STEP FLASHING
- 7.34 MET CRICKET FLG
- 7.35 MET DRAVE STRIP
- 7.36 PAINTED MET WALL CP
- 7.37 PREN MET WALL CP
- 7.38 MET GLEAT
- 7.39 MET OVERFLOW SCOPPER
- 7.40 MET BUTTER
- 7.41 DRAINPOINT
- 7.42 MET EQUIP CURB
- 7.43 SLOTTED
- 7.44 ROOF ACCESS
- 7.45 SMOKE VENT
- 7.46 SNOW GUARD
- 7.47 CONCRETE/ASPH FIBERPROOFING
- 7.48 FIRESTOP SYSTEM
- 7.49 FIRE RATED JOINT SEALANT ASSEMBLY
- 7.50 MET EXP JOINT
- 7.51 COMPRESSION SEAL
- 7.52 JOINT SEALANT
- 7.53 JOINT BACKING MATERIAL
- 7.54 MET SCOPPER TO CONDUCTOR HEAD & IS
- 7.55 WEATHER RESISTIVE BARRIER SYSTEM
- 8.1 HW FRAME
- 8.2 HW DOOR
- 8.3 HW FIXED PANEL
- 8.4 HW STOP
- 8.5 HW STOP
- 8.6 HW REFLECTION CHANNEL
- 8.7 HW FRAME ANCHOR
- 8.8 HW SUB-SILL
- 8.9 WOOD FRAME
- 8.10 WOOD DOOR
- 8.11 WOOD FIXED PANEL
- 8.12 WOOD WINDOW
- 8.13 WOOD STOP
- 8.14 ALUM STOREFRONT
- 8.15 ALUM CURTAIN WALL FRAMING
- 8.16 ALUM FRAME
- 8.17 ALUM DOOR
- 8.18 ALUM WINDOW
- 8.19 ALUM STOP
- 8.20 ALUM REFLECTION CHANNEL
- 8.21 ALUM SUB-SILL
- 8.22 ALUM SILL FLG
- 8.23 ALUM THRESHOLD
- 8.24 WALL ACCESS DR
- 8.25 FLOOR ACCESS DR
- 8.26 OVERHEAD COILING DOOR
- 8.27 OVERHEAD COILING GRILLE
- 8.28 SLIDING GLASS DR
- 8.29 SCREEN DOOR
- 8.30 SHOWER DOOR
- 8.31 DOOR LOUVER
- 9.1 PORTLAND CEMENT PLASTER
- 9.2 ACoustICAL PLASTER
- 9.3 VENEER PLASTER
- 9.4 ACoustICAL PAINT
- 9.5 PORTLAND CEMENT STUCCO
- 9.6 DRYWALL STUD
- 9.7 ACoustICAL INSUL
- 9.8 OPSUM BOARD
- 9.9 ABUSE RESISTANT OPSUM BOARD
- 9.10 WATER RESISTANT OPSUM BOARD
- 9.11 OPSUM SHEATHING
- 9.12 SHAFTWALL SYSTEM
- 9.13 OPSUM BOARD DOUBLE TEE
- 9.14 SUSPENDED CEILING
- 9.15 ACoustICAL CEILING SYSTEM
- 9.16 QUARRY TILE
- 9.17 QUARRY TILE BASE
- 9.18 CERAMIC TILE
- 9.19 CERAMIC TILE BASE
- 9.20 PORCELAIN TILE
- 9.21 WOOD FLOOR
- 9.22 POLYURETHANE VAPOR BARRIER
- 9.23 POLYURETHANE FLOORING
- 9.24 VINYL COMPOSITION TILE
- 9.25 SHEET VINYL FLOORING
- 9.26 SEAMLESS TROMBELED FLOORING
- 9.27 CARPET
- 9.28 RUBBER BASE
- 9.29 RUBBER TREADS & RISERS
- 9.30 RUBBER STAR SHIRT
- 9.31 METAL COILING
- 9.32 ACoustICAL WALL PANEL
- 9.33 ROCKABLE WALL PANEL
- 9.34 PAINT
- 10.1 METAL TOILET PARTITION
- 10.2 PLASTIC TOILET PARTITION
- 10.3 BRIND SCREEN
- 10.4 SHOWER COMPARTMENT
- 10.5 CURBULE TRACK & CURTAIN
- 10.6 METAL WALL LOUVER
- 10.7 INTERIOR SIGNAGE
- 10.8 INTERIOR SIGNAGE
- 10.9 LOCKER
- 10.10 FIRE EXTINGUISHER CABINET
- 10.11 FIRE EXTINGUISHER BRACKET
- 10.12 WIRE MESH PARTITION
- 10.13 WIRE MESH DOOR
- 10.14 FOLDING GATE
- 10.15 CURBULE TRACK
- 10.16 PARTITION
- 10.17 ACCORDION PARTITION
- 10.18 WOOD STORAGE SHELVING
- 10.19 ROLLING STORAGE UNIT
- 10.20 BACKPACK HOOK
- 11.1 PLATFORM CURTAIN
- 11.2 BACKDROP
- 11.3 PROJECTION SCREEN
- 11.4 TV/MONITOR/AVR MOUNTING BRACKET
- 11.5 MAT MOVER
- 11.6 SCHEDULEBOARD
- 11.7 BASKETBALL BACKSTOP
- 11.8 DIM DIMMER
- 11.9 CURTAIN
- 11.10 DIM FLOOR
- 11.11 CERAMIC KILN
- 11.12 FLAMMABLE STORAGE CABINET
- 11.13 VENTED ACID STORAGE CABINET
- 12.1 PLASTIC LAMINATE COUNTERTOP
- 12.2 KEYBOARD TRAY
- 12.3 ARTICULATING KEYBOARD TRAY
- 12.4 COUNTER TOP
- 12.5 CASWORK LOCK
- 12.6 EPXY RESIN
- 12.7 EPXY RESIN SINK
- 12.8 EPXY RESIN SINK
- 12.9 SUPPLY CASE
- 12.10 FLOOR MAT
- 12.11 FLOOR MAT FRAME
- 12.12 WINDOW BLINDS
- 12.13 SUN CONTROL SHADE
- 12.14 ALUMINUM SEATING
- 12.15 DIM BLEACHERS
- 12.16 TELESCOPING DIM BLEACHERS
- 13.1 PORTABLE GYM BLEACHERS
- 13.2 EXT BLEACHERS
- 13.3 EXT BLEACHERS
- 14.1 ELEVATOR
- 14.2 WHEELCHAIR LIFT
- 15.1 PLUMBING PIPING
- 15.2 GAS PIPING
- 15.3 FIRE SPRINKLER PIPING
- 15.4 FIRE SPRINKLER HEAD
- 15.5 EXH HOOD
- 15.6 MECH DUCTWORK
- 15.7 MECH RTU
- 15.8 ROOF EXH FAN
- 15.9 ROOF EXH VENT
- 15.10 ROOF VENTILATOR
- 15.11 BOILER STACK & JOINT CAP
- 15.12 FLE & VENT CAP
- 16.1 ELEC CONDUIT
- 16.2 ELEC OUTLET
- 16.3 LIGHT FIXTURE
- 16.4 ELEC LIGHT SCOPPER
- 16.5 ELEC JUNCTION BOX
- 16.6 EXIT LIGHT
- 16.7 HORN
- 16.8 STROBE
- 16.9 ALARM STATION
- 16.10 DOOR ACTUATOR
- 16.11 MASTER CLOCK
- 16.12 FIRE ALARM CONTROL PANEL
- 16.13 FIRE ALARM DRAWING & ANNUNCIATION PANEL
- 17.1 COMMUNICATIONS CONDUIT/ WIRING
- 17.2 COMMUNICATIONS EQUIPMENT
- 17.3 COMMUNICATIONS SECURITY SYSTEM
- 17.4 SECURITY SYSTEM CONDUIT/ WIRING
- 17.5 SECURITY CAMERA
- 17.6 SECURITY MONITOR

L K A PART N E R S
INCORPORATED
A Professional Corporation for Architecture and Planning

430 North Tejon Street Suite 200
Colorado Springs Colorado 80903
tele: 719.473.9446 fax: 719.473.9448
web: www.lkapartners.com

Copyright 2018 The LKA Partners, Inc. This document and the information contained herein may not be reproduced or excerpted from without the express written permission of The LKA Partners, Inc. Unauthorized copying, disclosure or construction use are prohibited by copyright law.

New Widefield PK-8 School
11060 Fontaine Blvd., Widefield, CO

Widefield School District 3
1820 Main Street
Colorado Springs, CO 80911

WIDEFIELD SCHOOL DISTRICT 3
PRIDE. TRADITION. INNOVATION.

Development Plan

Drawn: _____ Production: _____
Checked: _____
Issued: 15 May 2018
Revised: _____

Area Key Plan

True North
Plan North

Building Elevations
A5.1

Project No. 17.001
The LKA Partners Incorporated

NOTE: THE KEYNOTE REFERENCE NUMBERS SHOWN ABOVE MAY OR MAY NOT CORRESPOND TO SPECIFICATION SECTIONS IN THE PROJECT MANUAL.