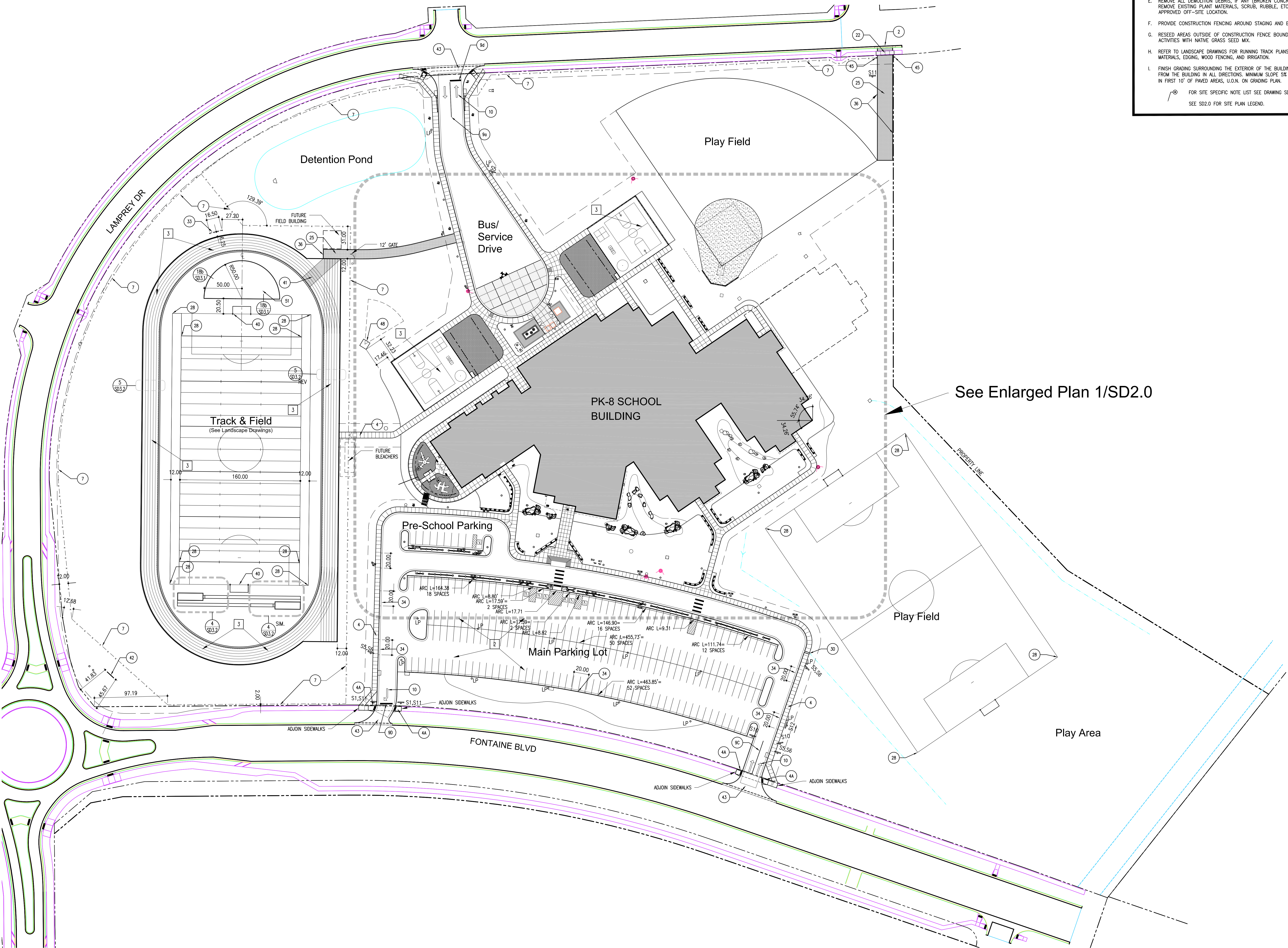


Site Plan General Notes

- SITE PLAN DIMENSIONS ARE TO FACE OF CURB, EDGE OF PAVING, OR FACE OF BUILDING FOUNDATION UNLESS NOTED OTHERWISE.
- REFERENCE TOPOGRAPHIC SURVEY PREPARED BY XXXX SURVEYING, PROJECT NUMBER XXXX, FIRST DATE XX,XX,2018 REVISION DATE XX,XX,2018 FOR BENCHMARKS, SITE UTILITIES AND OTHER SITE INFORMATION.
- REFERENCE GEOTECHNICAL ENGINEERING STUDY PREPARED BY TERRACON CONSULTANTS, INC., PROJECT NUMBER 23175112, DATED FEBRUARY 7, 2018, AND REVISED FEBRUARY 20, 2018 FOR SOILS INFORMATION AND RECOMMENDATIONS.
- REFERENCE CIVIL DRAWINGS FOR EROSION AND SEDIMENT CONTROL PLANS, GRADING, HORIZONTAL CONTROL, STORM DRAINAGE, AND SITE UTILITIES.
- REMOVE ALL DEMOLITION DEBRIS, IF ANY (BROKEN CONCRETE, ASPHALT, ETC.) FROM SITE. REMOVE EXISTING PLANT MATERIALS, SCRUB, RUBBLE, ETC. DISPOSE OF MATERIAL AT AN APPROVED OFF-SITE LOCATION.
- PROVIDE CONSTRUCTION FENCING AROUND STAGING AND EXTENT OF GRADING AREAS.
- RESEED AREAS OUTSIDE OF CONSTRUCTION FENCE BOUNDARY DISTURBED BY CONSTRUCTION ACTIVITIES WITH NATIVE GRASS SEED MIX.
- REFER TO LANDSCAPE DRAWINGS FOR RUNNING TRACK PLANS AND DETAILS, PLACEMENT OF LANDSCAPE MATERIALS, EDGING, WOOD FENCING, AND IRRIGATION.
- FINISH GRADING SURROUNDING THE EXTERIOR OF THE BUILDING SHALL BE SLOPED TO DRAIN AWAY FROM THE BUILDING IN ALL DIRECTIONS. MINIMUM SLOPE 5% IN FIRST 10' OF UNPAVED AREAS & 2.5% IN FIRST 10' OF PAVED AREAS, U.O.N. ON GRADING PLAN.

⊙ FOR SITE SPECIFIC NOTE LIST SEE DRAWING SD2.0.
SEE SD2.0 FOR SITE PLAN LEGEND.



See Enlarged Plan 1/SD2.0

L K A PART N E R S
I N C O R P O R A T E D
A Professional Corporation for Architecture and Planning
430 North Tejon Street Suite 200
Colorado Springs Colorado 80903
tele: 719.473.8446 fax: 719.473.8448
web: www.lkapartners.com

Copyright 2018 The LKA Partners, Inc. This document and the information contained herein may not be reproduced or excerpted from without the express written permission of The LKA Partners, Inc. Unauthorized copying, disclosure or construction use are prohibited by copyright law.

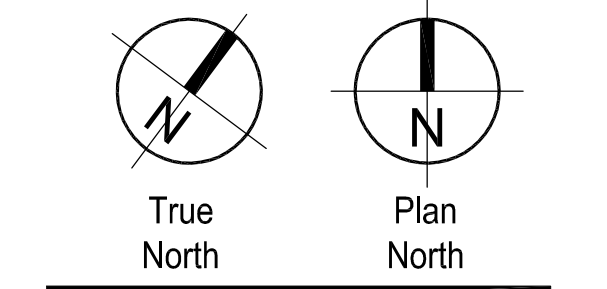
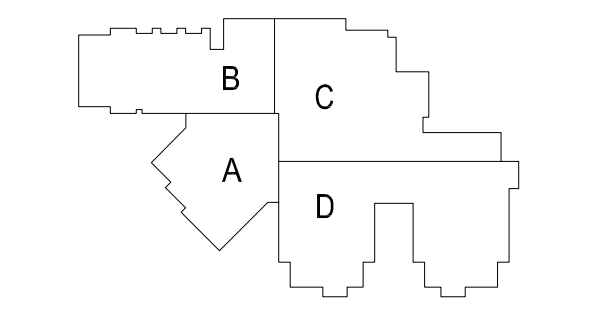
New Widefield PK-8 School
11060 Fontaine Blvd., Widefield, CO
Widefield School District 3
1820 Main Street
Colorado Springs, CO 80911



Development Plan

Drawn: _____ Production: _____
Checked: _____
Issued: 15 May 2018
Revised: _____

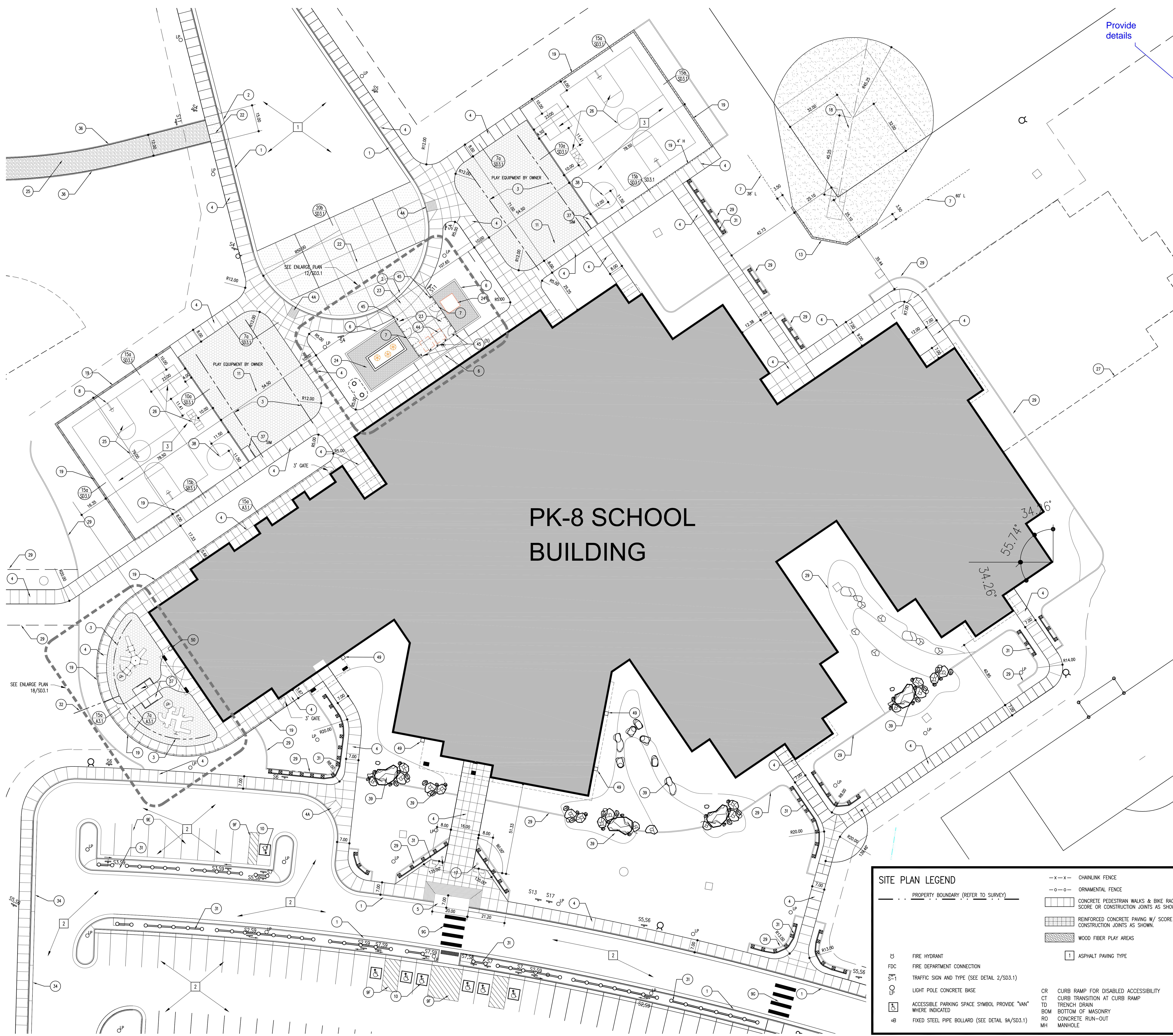
Area Key Plan



Overall Site Plan

SD1.0

Project No. 17.001
The LKA Partners Incorporated



PK-8 SCHOOL BUILDING

- SPECIFIC NOTE LEGEND**
 -○-○- SPECIFIC NOTE
- SITE PLAN SPECIFIC NOTES**
1. CONCRETE CURB AND GUTTER, (25a & 30a/SD3.1) TYP UON
 2. CONCRETE RAMPED/MOUNTABLE CURB & GUTTER, (20a/SD3.1)
 3. 4" PERFORATED DRAIN PIPE IN PLAY AREAS. SLOPE TO DRAIN AT 1% MINIMUM. (5/SD3.1)
 4. CONCRETE WALK WITH ISOLATION, EXPANSION & CONTRACTION JOINTS AS SHOWN (1/4" PER FOOT MAX. CROSS SLOPE), 8'-0" WIDE (24a,b & 29a,b/SD3.1) UON
 - 4A. HANDICAPPED RAMP. SEE CIVIL DRAWINGS.
 5. PASSENGER LOADING ZONE: 20'-0"x10'-0" (MIN), 2% MAX. CROSS SLOPE. (23/SD3.1)
 6. UTILITY ENCLOSURE SCREEN WALL. (22/SD3.2)
 7. CHAIN LINK FENCE & GATES 6'-0" HIGH UON (28/SD3.1)
 8. BASKETBALL GOAL POST AND BACKBOARD (8/SD3.1)
 9. TRAFFIC CONTROL AND PARKING STRIPING:
 A - CENTER LINES: 4" WIDE SOLID DOUBLE YELLOW
 B - LANE LINES: 4" WIDE DASHED WHITE, 10' LONG
 C - CHANNELEZING LINES: 8" WIDE SOLID WHITE
 D - STOP BARS: 24" WIDE SOLID WHITE
 E - AUTO PARKING STALL LINES: 4" WIDE SOLID WHITE
 F - HANDICAP / DISABLED PARKING STALL STRIPING & LOADING AREA LINES 4" WIDE SOLID WHITE PERIMETER & 24" APART AT CROSSHATCH
 G - PEDESTRIAN CROSSING: 2' x 12' SOLID WHITE BARS, 3' APART.
 10. TRAFFIC GRAPHICS. (19/SD3.1)
 11. WOOD FIBER SAFETY SURFACING.
 12. BICYCLE RACK (SEE LANDSCAPING DRAWINGS)
 13. BACKSTOP (16/SD3.1)
 14. NOT USED.
 15. NOT USED.
 16. SITE BENCH. (SEE LANDSCAPE DRAWINGS).
 17. FLAGPOLE (SEE LANDSCAPE DRAWINGS).
 18. 5" THICK SKINNED INFIELD MIX.
 19. 4' HIGH METAL ORNAMENTAL FENCE.
 22. 6" THICK REINFORCED CONCRETE PAVING ON 6" CLASS 6 ROAD BASE.
 23. 7" THICK REINFORCED CONCRETE PAVING ON 6" CLASS 6 ROAD BASE.
 24. 6" THICK GRAVEL SURFACING.
 25. 8" THICK GRAVEL SURFACING. SEE SPEC SECTION 32 15 40.
 26. BASKETBALL COURT/GAME STRIPING. (21 SD3.1)
 27. FUTURE ADDITION.
 28. FIELD CORNER MARKER (6/SD3.1).
 29. LANDSCAPING EDGE (SEE LANDSCAPE DRAWINGS).
 30. SIDEWALK TRENCH DRAIN AND COVER. (26 SD3.1).
 31. WOOD TIMBER FENCE. (SEE LANDSCAPE DRAWINGS).
 32. 4" SOLID SCHEDULE 40 PVC PIPE.
 33. SCORE BOARD POST SUPPORTS (14/SD3.1) ALT. #2. (4) POSTS SPACED 5'-6" O.C.
 34. 20' LONG CONCRETE ROLLED CURB & GUTTER FOR SNOW REMOVAL. (25b/SD3.1).
 35. NOT USED.
 36. CONCRETE FLUSH CURB. (18a/SD3.1)
 37. CONC RAMP. 11/SD3.1).
 38. TETHER BALL POLE (4 & 8/SD3.1)
 39. LANDSCAPE BOULDERS. (SEE LANDSCAPE DRAWINGS.)
 40. GOAL POST. (10b/SD3.2).
 41. 16' WIDE INFIELD ACCESS PATHWAY, PAVE WITH TYPE 2 ASPHALT.
 42. BUILDING MONUMENT SIGN (22/SD3.2).
 43. EL PASO COUNTY STANDARD CROSS PAN. FILE NAME: SD-2-26.
 44. DUMPSTERS BY OWNER.
 45. BOLLARD. (9a/SD3.1)
 46. NOT USED.
 47. NOT USED.
 48. 10' x 10' x 4" CONCRETE DISCUS/SHOT PUT PAD.
 49. CATCH BASIN. (12/SD3.1).
 50. CATCH BASIN. (17/SD3.1).
 51. HIGH JUMP PAD. TRACK SURFACING OVER TYPE 3 ASPHALT. FLUSH CURB ALL AROUND (18b/SD3.1)

SITE PLAN LEGEND

-x-x-	CHAINLINK FENCE	INLET	STORM SEWER INLET
-o-o-	ORNAMENTAL FENCE	AD	AREA DRAIN
[Pattern]	CONCRETE PEDESTRIAN WALKS & BIKE RACK AREA W/ SCORE OR CONSTRUCTION JOINTS AS SHOWN.	EJ	EXPANSION JOINT W/ CAULK
[Pattern]	REINFORCED CONCRETE PAVING W/ SCORE OR CONSTRUCTION JOINTS AS SHOWN.	SJ	SCORE JOINT- AS INDICATED
[Pattern]	WOOD FIBER PLAY AREAS	IE	INVERT ELEVATION
[Symbol]	ASPHALT PAVING TYPE	FL	FLOW LINE
[Symbol]		HP	HIGH POINT
[Symbol]		LP	LOW POINT
[Symbol]		PC	POINT OF CURVATURE
[Symbol]		PT	POINT OF TANGENCY
[Symbol]		CC	CENTER OF CURVATURE
[Symbol]		PCR	POINT OF CURB RADIUS (RETURN)
[Symbol]		AP	ANGLE POINT
[Symbol]		TC	TOP OF CURB
[Symbol]		TP	TOP OF PAVING (CONC / ASPHALT)
[Symbol]		TG	TOP OF GRATE (DRAIN / INLET)
[Symbol]		WP	WORKING POINT
[Symbol]		C	CENTER LINE
[Symbol]		TO	TOP OF ...
[Symbol]		TOW	TOP OF WALL
[Symbol]		UNO	UNLESS NOTED OTHERWISE

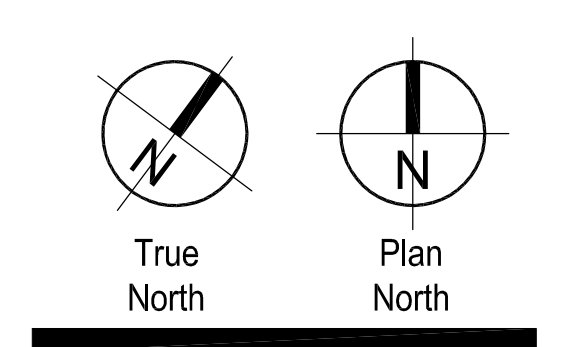
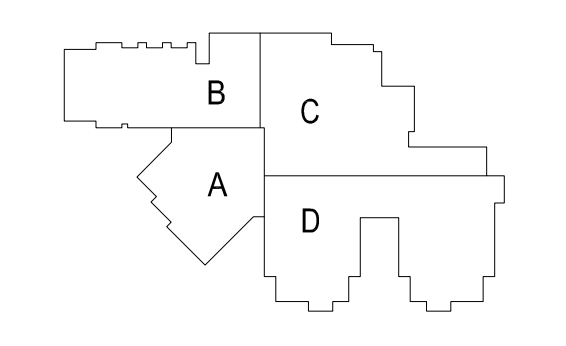
Provide details



Development Plan

Drawn: _____ Production _____
 Checked: _____
 Issued: _____ 15 May 2018
 Revised: _____

Area Key Plan



Enlarged Site Plan

SD2.0

Markup Summary

dsdrice (1)



Subject: Cloud+
Page Label: 2
Author: dsdrice
Date: 7/3/2018 1:38:47 PM
Color: ■

[Provide details](#)