

WIDEFIELD EXTERIOR LUMINAIRE SCHEDULE											
MARK	MANUFACTURER	CATALOG NO.	LAMPS	FRESH	MOUNTING	WATTAGE	VOLTAGE	REMARKS			
FL (NOTE 1)	BEACON OR APPROVED EQUAL	FL-1 LED SERIES 13L-25-407-026-UNV-PK-BL	LED 4000K	BLACK	FLOOD EXTERIOR WALL WASH AT LAZE	25	120/277	6-1/2" DIA. 5-1/2" H. DIE CAST ALUMINUM HOUSING W/ DIE CAST OPTICAL DISTRIBUTION, INTEGRAL FOUR POSITION ROTARY DIMMING SWITCH, 2,980 DELIVERED LUMENS, INTEGRAL DRIVER, IP44, 0-9, 20A SURGE PROTECTION. WET LOCATIONS LISTED. 5 YEAR WARRANTY.			
V235-3 (NOTE 1)	BEACON OR APPROVED EQUAL	VPER LARGE SERIES VPL-60L-235-467-3-UNV-K-BMT	LED 4000K	BLACK	POLE AT 20'	235	120/277	24" HPX 14 20" W X 14" DP LONG POLE MOUNTED LED FIXTURE, TYPE 3 DISTRIBUTION DIE-CAST ALUMINUM, CORROSION RESISTANT HOUSING, -40 DEG. C TO 40 DEG. C OPERATING TEMPERATURE, 20A SURGE PROTECTION, 26,378 DELIVERED LUMENS 80 LEDS, 70 CRI, 5 YEAR WARRANTY.			
V235-4 (NOTE 1)	BEACON OR APPROVED EQUAL	VPER LARGE SERIES VPL-60L-235-467-4-UNV-K-BMT	LED 4000K	BLACK	POLE AT 20'	235	120/277	SAME AS ABOVE BUT WITH A TYPE 4 DISTRIBUTION AND A 20,777 DELIVERED LUMENS			
V235-R (NOTE 1)	BEACON OR APPROVED EQUAL	VPER LARGE SERIES VPL-60L-235-467-5-UNV-K-BMT	LED 4000K	BLACK	POLE AT 20'	235	120/277	SAME AS ABOVE BUT WITH A TYPE RR RECTANGULAR DISTRIBUTION AND A 26,811 DELIVERED LUMENS			
VPL-2 (NOTE 1)	BEACON OR APPROVED EQUAL	VPER LARGE SERIES VPL-60L-395-467-3-UNV-K-BMT	LED 4000K	BLACK	POLE AT 20'	395	120/277	SAME AS ABOVE BUT WITH 96 LEDS, A TYPE 2 DISTRIBUTION AND 39,589 DELIVERED LUMENS			
VPL-3 (NOTE 1)	BEACON OR APPROVED EQUAL	VPER LARGE SERIES VPL-60L-395-467-3-UNV-K-BMT	LED 4000K	BLACK	POLE AT 20'	395	120/277	SAME AS ABOVE TYPE VPL-2 BUT WITH A TYPE 3 DISTRIBUTION AND 39,819 DELIVERED LUMENS			
VPL-4 (NOTE 1)	BEACON OR APPROVED EQUAL	VPER LARGE SERIES VPL-60L-395-467-4-UNV-K-BMT	LED 4000K	BLACK	POLE AT 20'	395	120/277	SAME AS ABOVE TYPE VPL-2 BUT WITH A TYPE 4 DISTRIBUTION AND 38,723 DELIVERED LUMENS			
VPS1-2 (NOTE 1)	BEACON OR APPROVED EQUAL	VPER SMALL SERIES VPS-48L-110-407-3-UNV-K-BMT	LED 4000K	BLACK	POLE AT 12'	110	120/277	16.75" X 11.25" W X 14" DP LONG POLE MOUNTED LED FIXTURE, TYPE 3 DISTRIBUTION DIE-CAST ALUMINUM, CORROSION RESISTANT HOUSING, -40 DEG. C TO 40 DEG. C OPERATING TEMPERATURE, 20A SURGE PROTECTION, 12,263 DELIVERED LUMENS 68 LEDS, 70 CRI, 5 YEAR WARRANTY.			
VPS1-4 (NOTE 1)	BEACON OR APPROVED EQUAL	VPER SMALL SERIES VPS-48L-110-407-5-UNV-K-BMT	LED 4000K	BLACK	POLE AT 12'	110	120/277	SAME AS ABOVE TYPE VPS1-2 BUT WITH A TYPE 5 ROUND WIDE DISTRIBUTION AND 11,825 DELIVERED LUMENS			
WEM OR APPROVED EQUAL	COMPASS OR APPROVED EQUAL	CURIO SERIES CUSD408-H-ND	LED 4000K	DARK BRONZE	WALL AT TOP EXT. DOOR BOTH SIDES OF EXT. DOOR	32	277	6" W X 5.6" H X 2.9" D LOW PROFILE ARCHITECTURAL LED WALL PACK, DIE CAST FULLY SEALED AND GASKETED HOUSING, LOW PROFILE OUTDOOR, IP66 RATED, 1,600 DELIVERED LUMENS IN AC MODE, 800 LUMENS IN EMERGENCY MODE, -25 DEG. C TO 50 DEG. C OPERATING TEMP. W/ HEAT SINK ON TEST SWITCH, 5 YEAR WARRANTY.			
W-HP OR APPROVED EQUAL	BEACON OR APPROVED EQUAL	FRANSVERSE SERIES TRV-54RMB-126-407-3-UNV-K-BMT	LED 4000K	BLACK	WALL AT 12'	136	120/277	14" L X 12" D X 7.2" H LED WALL MOUNTED FIXTURE, DIE CAST ALUMINUM HOUSING AND GASKETED, THERMALLY ISOLATED DRIVER, IP44-60, 50,000 HRS. AT FULL LOAD AND 40 DEG. C TEMPERATURE, 90 LEDS WITH 15,407 DELIVERED LUMENS, SUITABLE FOR WET LOCATIONS, 5 YEAR WARRANTY.			

NOTES:
1 PROVIDE ALL THE NECESSARY ACCESSORIES FOR A COMPLETE FUNCTIONING SYSTEM.
GENERAL NOTES:
1 THE ARCHITECT IS RESPONSIBLE FOR FINAL COLOR/FINISH SELECTION AND APPROVAL OF ALL LIGHT FIXTURES.

GENERAL NOTES

- A. CONTRACTOR SHALL VERIFY ALL (E) & (N) UTILITY LOCATIONS PRIOR TO ANY EXCAVATION. NOT ALL EXISTING CONDITIONS ARE SHOWN FOR CLARITY.
- B. CONTRACTOR SHALL PROVIDE ALL REQUIRED CUTTING, TRENCHING, BACKFILLING, AND RESTORATION.
- C. EXTERIOR SIGN LIGHTING CONTROL SHALL BE TIED TO SITE LIGHTING CONTROL.
- D. THIS PLAN IS BASED ON THE INFORMATION AVAILABLE. THE LUMINAIRE LOCATIONS SHOWN MUST BE COORDINATED WITH EXISTING OR FUTURE FIELD CONDITIONS.
- E. ALL LUMINAIRES SHALL BE ON FROM DUSK TO PRESET TIME USING SITE PHOTO CELL AND PROGRAMMABLE TIME CLOCK. COORDINATE TIMES FOR EACH DAY WITH THE OWNER.
- F. UNSHIELDED WALL PACKS ARE PROHIBITED.
- G. SEE ADDITIONAL GENERAL NOTES ON E101.

KEYED NOTES

- ① EXISTING NEW MVEA MEDIUM VOLTAGE VAULT. COORDINATE WITH MVEA.
- ② CONTRACTOR SHALL EXTEND PRIMARY CONDUIT FROM VAULT TO TRANSFORMER PAD.
- ③ PROPOSED 1500KVA TRANSFORMER PAD AND UTILITY METER.
- ④ PROVIDE 4" EMPTY CONDUIT TO TRANSFORMER WITH PULL CORD. COORDINATE WITH MVEA PRIOR TO INSTALLING CONDUIT. ROUTE CONDUIT TO AVOID FUTURE BUILDING FOOTPRINTS. COORDINATE WITH OWNER ON FUTURE BUILDING FOOTPRINTS PRIOR TO INSTALLING CONDUIT.
- ⑤ PROVIDE METALLIC LOCKABLE, IN-USE COVER. MOUNT RECEPTACLE ON FENCE.
- ⑥ DIGITAL LIGHTING CONTROLLER WITH SEVEN DAY TIME CLOCK AND LITHIUM BATTERY BACK UP POWER SUPPLY, TORX DGLC SERIES OR ENGINEER APPROVED EQUAL. VOLTAGE TO MATCH LIGHTING BEING CONTROLLED. PROVIDE ALL THE NECESSARY ACCESSORIES TO FOR A CONNECTION TO LUTRON QS ENERGI SAVR NODE SOFTSWITCH FOR A COMPLETE FUNCTIONING SYSTEM. COORDINATE THE EXACT LOCATION WITH OWNER PRIOR TO ROUGH-IN.
- ⑦ PHOTO CELL FOR CONTROLLING POLE LIGHTS AND EXTERIOR WALL-MOUNTED LIGHTS. PROVIDE ALL THE NECESSARY ACCESSORIES TO FOR A CONNECTION TO LUTRON QS ENERGI SAVR NODE SOFTSWITCH FOR A COMPLETE FUNCTIONING SYSTEM. COORDINATE EXACT LOCATION WITH FIELD CONDITIONS.
- ⑧ LUTRON PROVIDED QS ENERGI SAVR NODE 0-10V AND SOFTSWITCH TO CONTROL OUTDOOR LIGHTING.
- ⑨ SEE TYPICAL POLE BASE DETAIL 1, THIS SHEET.



1 TYPICAL POLE BASE DETAIL
NOT TO SCALE

ELECTRICAL SITE PLAN
SCALE: 1" = 50'-0"

L K A PARTNERS
INCORPORATED
A Professional Corporation for Architecture and Planning
PLANT
1300 W. STATE ST. SUITE 200
DENVER, CO 80202
TEL: 719.475.8448 FAX: 719.475.8448
WWW.LKAPARTNERS.COM

© Copyright 2018 The LKA Partners, Inc. This document and the information contained herein may not be reproduced or excerpted from without the express written permission of The LKA Partners, Inc. Unauthorized copying, disclosure or construction use are prohibited by copyright law.

New Widefield PK-8 School
Widefield, CO
Widefield School District 3
1820 Main Street
Colorado Springs, CO 80911

SITE DEVELOPMENT PLAN

Drawn: _____ AO
Checked: _____ MP
Issued: _____ 20 April 2018
Revised: _____

Area Key Plan

ELECTRICAL SITE PLAN

E1.0

Project No. 17-001
The LKA Partners Incorporated

Calculation Summary							
Label	CalcType	Units	Avg	Max	Min	Avg/Min	Max/Min
Entire Site	ILLUMINANCE	Fc	0.66	14	0	N.A.	N.A.
Entrance Sign Side 3 1	ILLUMINANCE	Fc	19.25	22.5	16.0	1.20	1.41
Left Front Facade Side 2	ILLUMINANCE	Fc	7.04	31	0	N.A.	N.A.
Property Line	ILLUMINANCE	Fc	0.02	0.3	0.0	N.A.	N.A.
Right Front Facade Side 3	ILLUMINANCE	Fc	6.22	21	0	N.A.	N.A.
Back Round About	ILLUMINANCE	Fc	3.70	10.0	0.0	N.A.	N.A.
Big Front Parking Lot	ILLUMINANCE	Fc	3.70	7.0	1.0	3.70	7.00
Front Parking Lot	ILLUMINANCE	Fc	3.75	8.0	0.0	N.A.	N.A.

GENERAL NOTES

- A. THESE PHOTOMETRIC CALCULATIONS ARE BASED ON MANUFACTURER'S IES FILES AND 0.95 LIGHT DEPRECIATION FACTORS (501 HOURS OF OPERATION).
- B. ACTUAL ILLUMINANCE LEVELS MAY DIFFER FROM THE FOOTCANDLE LEVELS SHOWN DUE TO VARIABLE FIELD CONDITIONS, SUCH AS NEARBY EXISTING LUMINAIRES, LUMINAIRE DIRT DEPRECIATION, LANDSCAPING, AND FUTURE DEVELOPMENTS.
- F. OFF-SITE ILLUMINATION IS NOT PERMITTED.
- G. SEE ADDITIONAL GENERAL NOTES ON SHEET E100.

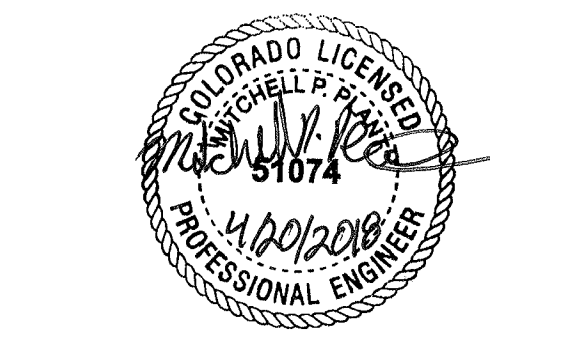
KEYED NOTES

- ① DIGITAL LIGHTING CONTROLLER WITH SEVEN DAY TIME CLOCK AND LITHIUM BATTERY BACK UP POWER SUPPLY. TORX DGLD SERIES OR ENGINEER APPROVED EQUAL VOLTAGE TO MATCH LIGHTING BEING CONTROLLED. PROVIDE ALL THE NECESSARY ACCESSORIES TO FOR A CONNECTION TO LUTRON QS ENERGY SAVING NODE SOFTSWITCH FOR A COMPLETE FUNCTIONING SYSTEM. COORDINATE THE EXACT LOCATION WITH OWNER PRIOR TO ROUGH-IN.
- ② PHOTO CELL FOR CONTROLLING POLE LIGHTS AND EXTERIOR WALL-MOUNTED LIGHTS. PROVIDE ALL THE NECESSARY ACCESSORIES TO FOR A CONNECTION TO LUTRON QS ENERGY SAVING NODE SOFTSWITCH FOR A COMPLETE FUNCTIONING SYSTEM. COORDINATE EXACT LOCATION WITH FIELD CONDITIONS.
- ③ LUTRON PROVIDED QS ENERGY SAVING NODE 0-10V AND SOFTSWITCH TO CONTROL OUTDOOR LIGHTING.



New Widefield PK-8 School
Widefield, CO

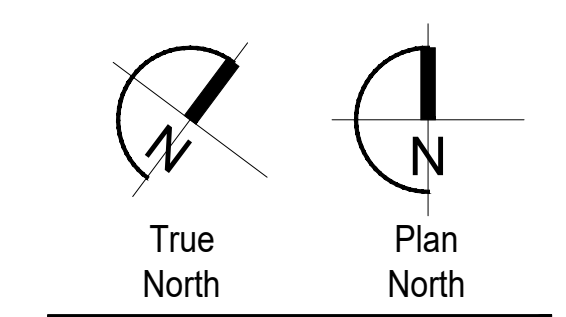
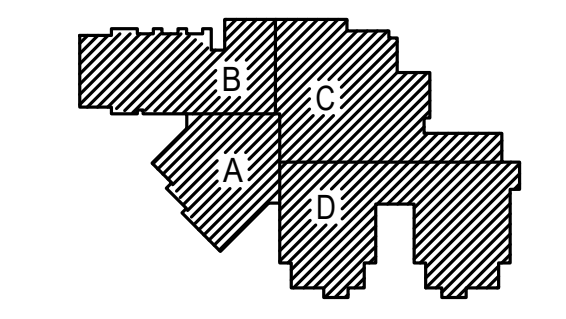
Widefield School District 3
1820 Main Street
Colorado Springs, CO 80911



SITE DEVELOPMENT PLAN

Drawn: MZ
 Checked: CLP
 Issued: 20 April 2018
 Revised:

Area Key Plan



ELECTRICAL LIGHTING SITE PLAN-PHOTOMETRY E1.01

FL-1 (LED) **WIDEFIELD PRE-K8** **FL** **BEACON**

DESCRIPTION
The FL-1 is a high performance, low-profile outdoor lighting fixture designed for use in a wide variety of applications. It features a high-power LED engine and a precision-machined aluminum housing. The fixture is designed to provide uniform, glare-free illumination for a wide range of outdoor spaces, including walkways, patios, and entryways. It is available in multiple color temperatures and finishes to match your outdoor aesthetic.

Specifications:
• High powered floodlight
• 120VAC, 60Hz
• 4K7, 6X6, UNV, YK, BL
• 120VAC, 60Hz
• 4K7, 6X6, UNV, YK, BL

Ordering Information:
ORDERING EXAMPLE: FL-12L-25-4K7-6X6-UNV-YK-BL

BEACON **HUBBELL** **Lighting**

CUSO Series **WIDEFIELD PRE-K8** **Type WEM** **Slim LED AC/Emergency Outdoor Light**

DESCRIPTION
The CUSO Series is an architectural, low-profile outdoor lighting fixture designed for use in a wide variety of applications. It features a high-power LED engine and a precision-machined aluminum housing. The fixture is designed to provide uniform, glare-free illumination for a wide range of outdoor spaces, including walkways, patios, and entryways. It is available in multiple color temperatures and finishes to match your outdoor aesthetic.

Specifications:
• Slim LED AC/Emergency Outdoor Light
• 120VAC, 60Hz
• 17W, 32W
• 120VAC, 60Hz
• 17W, 32W

Ordering Information:
ORDERING EXAMPLE: CUSO-17-32W-17W-32W

BEACON **HUBBELL** **Lighting**

TRaverse Series **WIDEFIELD PRE-K8** **W-HIP** **BEACON**

DESCRIPTION
The TRaverse Series is a high-performance, low-profile outdoor lighting fixture designed for use in a wide variety of applications. It features a high-power LED engine and a precision-machined aluminum housing. The fixture is designed to provide uniform, glare-free illumination for a wide range of outdoor spaces, including walkways, patios, and entryways. It is available in multiple color temperatures and finishes to match your outdoor aesthetic.

Specifications:
• WIDEFIELD PRE-K8
• W-HIP
• 120VAC, 60Hz
• 4K7, 6X6, UNV, YK, BL

Ordering Information:
ORDERING EXAMPLE: TRV-4-60NB-136-4K7-6X6-UNV-YK-BL

BEACON **HUBBELL** **Lighting**

ORDERING INFORMATION ORDERING EXAMPLE: TRV-4-60NB-136-4K7-6X6-UNV-YK-BL

TRV-4	60NB-136	4K7	6X6	UNV	YK	BL
TRV-4	60NB-136	4K7	6X6	UNV	YK	BL

BEACON **HUBBELL** **Lighting**

VIPER L STRIKE **WIDEFIELD PK-8** **V235-3** **V235-5R** **V235-6R** **BEACON**

DESCRIPTION
The VIPER L STRIKE is a high-performance, low-profile outdoor lighting fixture designed for use in a wide variety of applications. It features a high-power LED engine and a precision-machined aluminum housing. The fixture is designed to provide uniform, glare-free illumination for a wide range of outdoor spaces, including walkways, patios, and entryways. It is available in multiple color temperatures and finishes to match your outdoor aesthetic.

Specifications:
• WIDEFIELD PK-8
• V235-3, V235-5R, V235-6R
• 120VAC, 60Hz
• 4K7, 6X6, UNV, YK, BL

Ordering Information:
ORDERING EXAMPLE: VPL-96L-395-4K7-2-UNV-K-BMT

BEACON **HUBBELL** **Lighting**

VIPER L STRIKE **WIDEFIELD PRE-K8** **VPL-2** **BEACON**

DESCRIPTION
The VIPER L STRIKE is a high-performance, low-profile outdoor lighting fixture designed for use in a wide variety of applications. It features a high-power LED engine and a precision-machined aluminum housing. The fixture is designed to provide uniform, glare-free illumination for a wide range of outdoor spaces, including walkways, patios, and entryways. It is available in multiple color temperatures and finishes to match your outdoor aesthetic.

Specifications:
• WIDEFIELD PRE-K8
• VPL-2
• 120VAC, 60Hz
• 4K7, 6X6, UNV, YK, BL

Ordering Information:
ORDERING EXAMPLE: VPL-96L-395-4K7-2-UNV-K-BMT

BEACON **HUBBELL** **Lighting**

VIPER L STRIKE **WIDEFIELD PRE-K8** **VPL-3** **VPL-2** **VPL-1** **BEACON**

DESCRIPTION
The VIPER L STRIKE is a high-performance, low-profile outdoor lighting fixture designed for use in a wide variety of applications. It features a high-power LED engine and a precision-machined aluminum housing. The fixture is designed to provide uniform, glare-free illumination for a wide range of outdoor spaces, including walkways, patios, and entryways. It is available in multiple color temperatures and finishes to match your outdoor aesthetic.

Specifications:
• WIDEFIELD PRE-K8
• VPL-3, VPL-2, VPL-1
• 120VAC, 60Hz
• 4K7, 6X6, UNV, YK, BL

Ordering Information:
ORDERING EXAMPLE: VPL-96L-395-4K7-2-UNV-K-BMT

BEACON **HUBBELL** **Lighting**

ORDERING INFORMATION ORDERING EXAMPLE: VPL-96L-395-4K7-2-UNV-K-BMT

VPL-2	VPL-3	VPL-1
VPL-2	VPL-3	VPL-1

BEACON **HUBBELL** **Lighting**

VIPER S STRIKE **WIDEFIELD PK-8** **VPS1-2** **VPS1-5** **BEACON**

DESCRIPTION
The VIPER S STRIKE is a high-performance, low-profile outdoor lighting fixture designed for use in a wide variety of applications. It features a high-power LED engine and a precision-machined aluminum housing. The fixture is designed to provide uniform, glare-free illumination for a wide range of outdoor spaces, including walkways, patios, and entryways. It is available in multiple color temperatures and finishes to match your outdoor aesthetic.

Specifications:
• WIDEFIELD PK-8
• VPS1-2, VPS1-5
• 120VAC, 60Hz
• 4K7, 6X6, UNV, YK, BL

Ordering Information:
ORDERING EXAMPLE: VPS1-48L-110-4K7-2-UNV-K-BMT

BEACON **HUBBELL** **Lighting**

VIPER S STRIKE **WIDEFIELD PRE-K8** **VPS1-2** **BEACON**

DESCRIPTION
The VIPER S STRIKE is a high-performance, low-profile outdoor lighting fixture designed for use in a wide variety of applications. It features a high-power LED engine and a precision-machined aluminum housing. The fixture is designed to provide uniform, glare-free illumination for a wide range of outdoor spaces, including walkways, patios, and entryways. It is available in multiple color temperatures and finishes to match your outdoor aesthetic.

Specifications:
• WIDEFIELD PRE-K8
• VPS1-2
• 120VAC, 60Hz
• 4K7, 6X6, UNV, YK, BL

Ordering Information:
ORDERING EXAMPLE: VPS1-48L-110-4K7-2-UNV-K-BMT

BEACON **HUBBELL** **Lighting**

VIPER S STRIKE **WIDEFIELD PRE-K8** **VPS1-2** **BEACON**

DESCRIPTION
The VIPER S STRIKE is a high-performance, low-profile outdoor lighting fixture designed for use in a wide variety of applications. It features a high-power LED engine and a precision-machined aluminum housing. The fixture is designed to provide uniform, glare-free illumination for a wide range of outdoor spaces, including walkways, patios, and entryways. It is available in multiple color temperatures and finishes to match your outdoor aesthetic.

Specifications:
• WIDEFIELD PRE-K8
• VPS1-2
• 120VAC, 60Hz
• 4K7, 6X6, UNV, YK, BL

Ordering Information:
ORDERING EXAMPLE: VPS1-48L-110-4K7-2-UNV-K-BMT

BEACON **HUBBELL** **Lighting**

ORDERING INFORMATION ORDERING EXAMPLE: VPS1-48L-110-4K7-2-UNV-K-BMT

VPS1-2
VPS1-2

BEACON **HUBBELL** **Lighting**

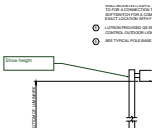
L K PARTNERS **INCORPORATED**
A Professional Corporation for Architecture and Planning
430 North Tejon Street Suite 200
Colorado Springs, Colorado 80903
Tel: 719.473.8448 Fax: 719.473.8448
www.lkpartners.com

New Widefield PK-8 School
Widefield, CO
Widefield School District 3
1820 Main Street
Colorado Springs, CO 80911

SITE DEVELOPMENT PLAN
Drawn: MZ
Checked: CLP
Issued: 20 April 2018
Revised:
ELECTRICAL
SITE DP
SCHEDULES
E1.02
Project No. 17-001
The LKA Partners Incorporated

Markup Summary

dsdkendall (1)



Subject: Callout
Page Label: [1] E1.0 ELECTRICAL SITE PLAN
Author: dsdkendall
Date: 7/6/2018 4:31:03 PM
Color: ■

Show height