



NOTICE OF PUBLIC HEARING(S)

This notice provides options to access to the Planning Commission and Board of County Commissioners' hearings on the following Quasi-Judicial land use matter. **The item is scheduled for the Thursday, January 20, 2022 Planning Commission beginning at 9:00 a.m. located in the Second Floor Hearing Room of the Pikes Peak Regional Development Center, 2880 International Circle, Colorado Springs and the Tuesday, February 1, 2022 Board of County Commissioners' hearing beginning at 1:00 p.m. located in the Centennial Hall Hearing Room located at 200 S. Cascade Avenue, Colorado Springs.**

SF-21-023

GREEN

**VACATION AND REPLAT
CLOVERLEAF FILING NO. 2**

A request by PT Cloverleaf, LLC, for approval to vacation and replat of a portion of a tract into 131 single-family residential. The 37.28-acre property is zoned RS-5000 (Residential Suburban) and is located immediately north of Higby Road and east of Jackson Creek Parkway and within Sections 23 and 24, Township 11, and Range 67 West of the 6th P.M. (Parcel No. 71242-02-236) (Commissioner District No. 1)

Type of Hearing: Quasi-Judicial

Planner: John Green (JohnGreen@elpasoco.com)

El Paso County is committed to full access and transparency while the community works through the COVID-19 crisis. That also means balancing public safety and keeping essential parts of County government open for business. You are welcome to appear in person at the hearing or attend the hearing remotely.

Watch the Live Hearings Remotely

If you are interested in watching the Planning Commission or Board of County Commissioners' hearing live, please go to <https://cloud.castus.tv/vod/elpasoco/video> at the scheduled time of the hearing. Staff will be monitoring the County's Live feed, so please feel free to ask questions or provide any comments you might have; however, any testimony you wish to provide must be done by following the "Participate Remotely" procedures listed below.

Participate Remotely

If you would like to provide testimony on an item being heard by the Planning Commission or the Board of County Commissioners, please email Elena Krebs at PCDhearings@elpasoco.com with your name and the best phone number to be reached at and include any documents you would like provided to the hearing body as part of the official record. When it's time for public testimony on the item you'd like to testify on, you will receive a phone call at the number you provided and will be brought into the meeting remotely so you can address the hearing body. **NOTE: New exhibits are not permitted via email the day of hearing. All exhibits must be emailed to Ms. Krebs no later than one day prior to each of the above listed hearings. Whether you are attending remotely or in person, kindly note there is a three (3) minute time limit on public comments and/or presentations.**

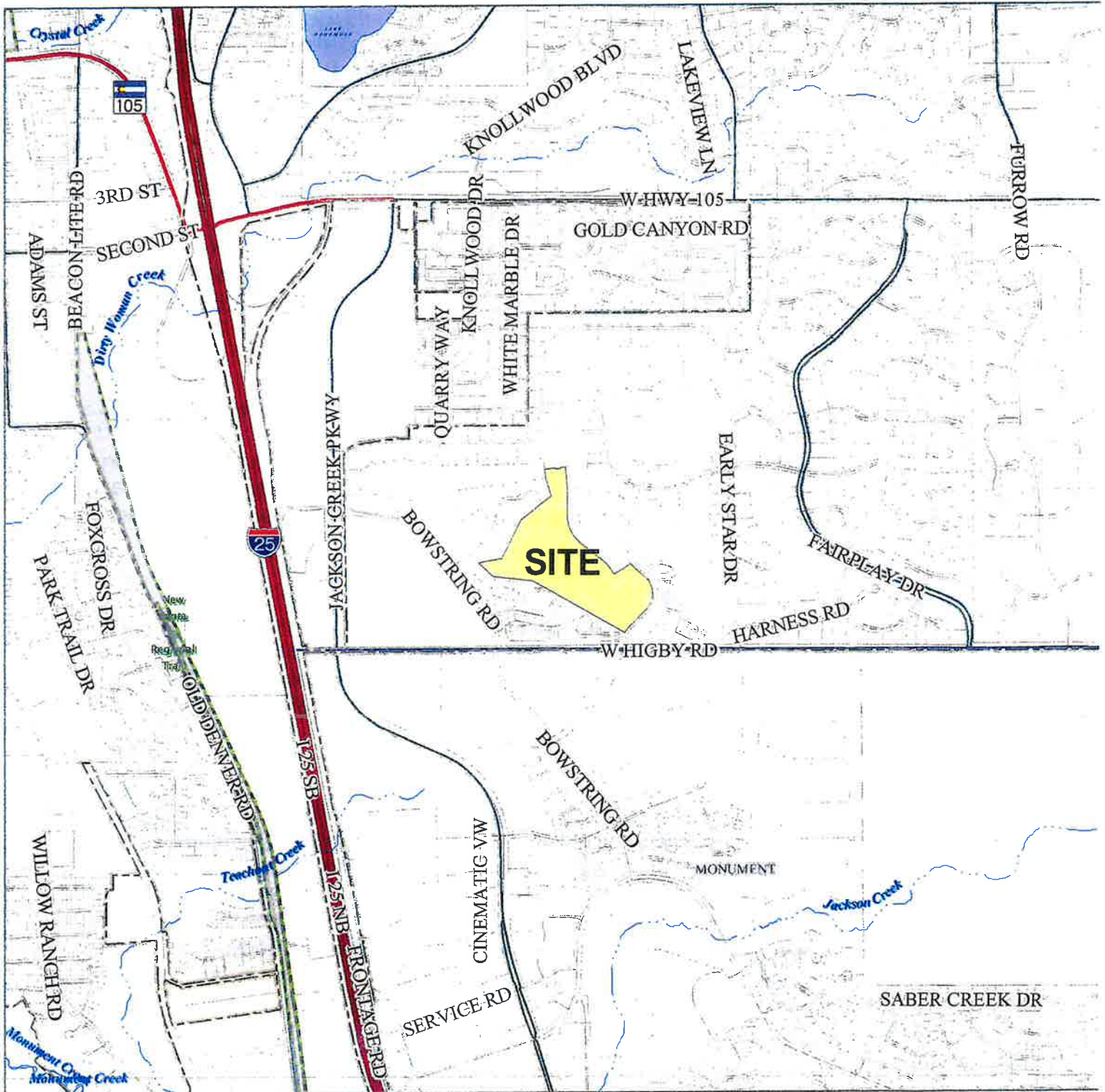
Please visit <https://epcdevplanreview.com/Public/ProjectDetails/158589> to view the Staff Report and all other documents related to this hearing item.

El Paso County Parcel Information

File Name: SF-21-023

Zone Map No: --

Date: January 3, 2022



Please report any parcel discrepancies to:
 El Paso County Assessor
 1675 W. Garden of the Gods Rd.
 Colorado Springs, CO 80907
 (719) 520-6600



COPYRIGHT 2018 by the Board of County Commissioners, El Paso County, Colorado. All rights reserved. No part of this document or data contained hereon may be reproduced; used to prepare derivative products; or distributed without the specific written approval of the Board of County Commissioners, El Paso County, Colorado. This document was prepared from the best data available at the time of printing. El Paso County, Colorado, makes no claim as to the completeness or accuracy of the data contained hereon.



Community Development Department
International Circle, Suite 110
Colorado Springs, CO 80910

DENVER CO 802

7 JAN 2022 PM 2:11

FIRST-CLASS



US POSTAGE IMPITNEY BOWES

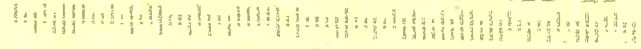
ZIP 80910 \$ 000.530
02 7H
0001332609 JAN 07 2022

7124202203
HP COLORADO I LLC
120 S RIVERSIDE PLAZA
CHICAGO, IL 60606

NIXIE 001 FE 1 0001/13/22

RETURN TO SENDER
ATTEMPTED - NOT KNOWN
UNABLE TO FORWARD

BC: 80910610799 *1176-04482-13-AM



100921176013350

80906-001000
80910>6107