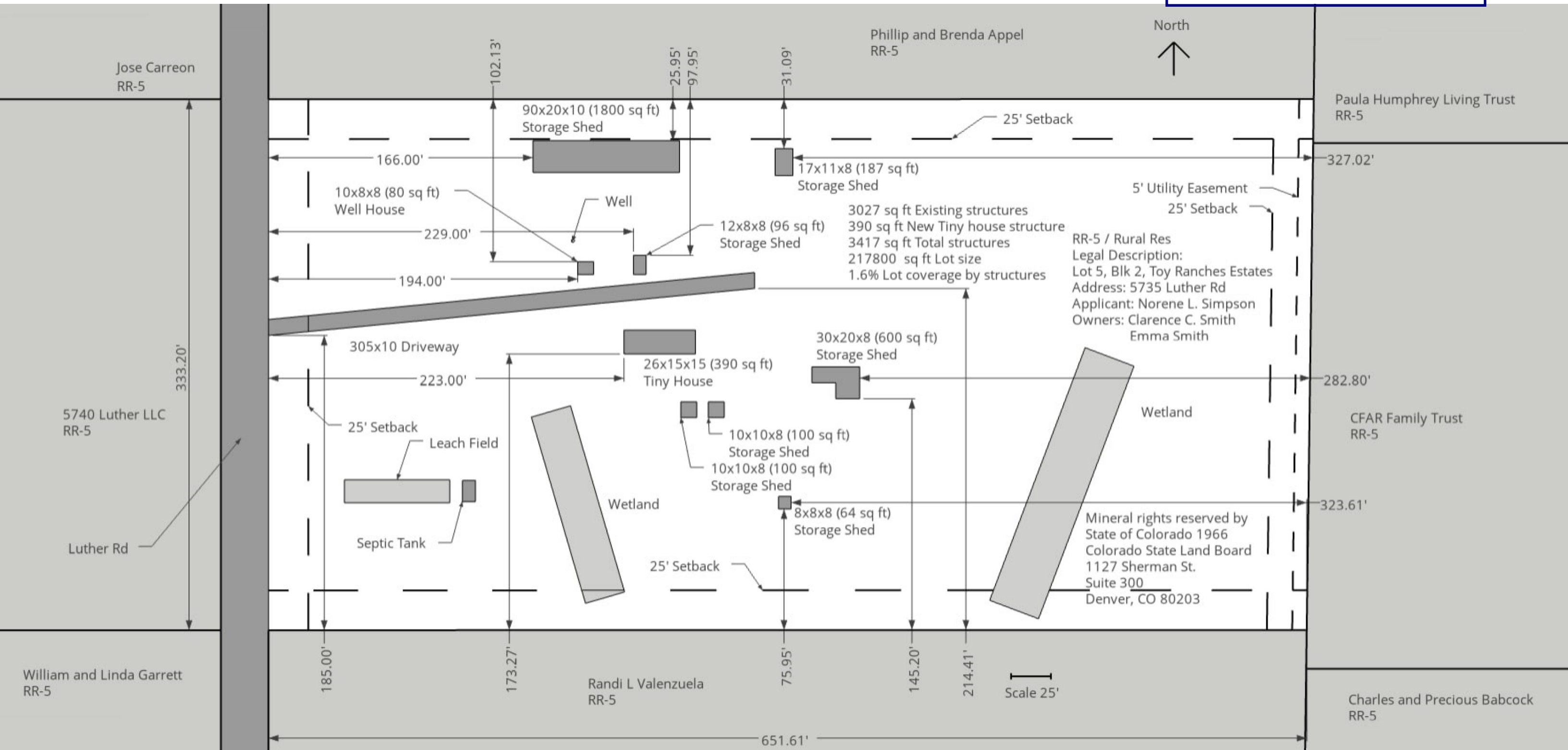


Approved

By: Ryan Howser

Date: 04/12/2022

El Paso County Planning & Community Development



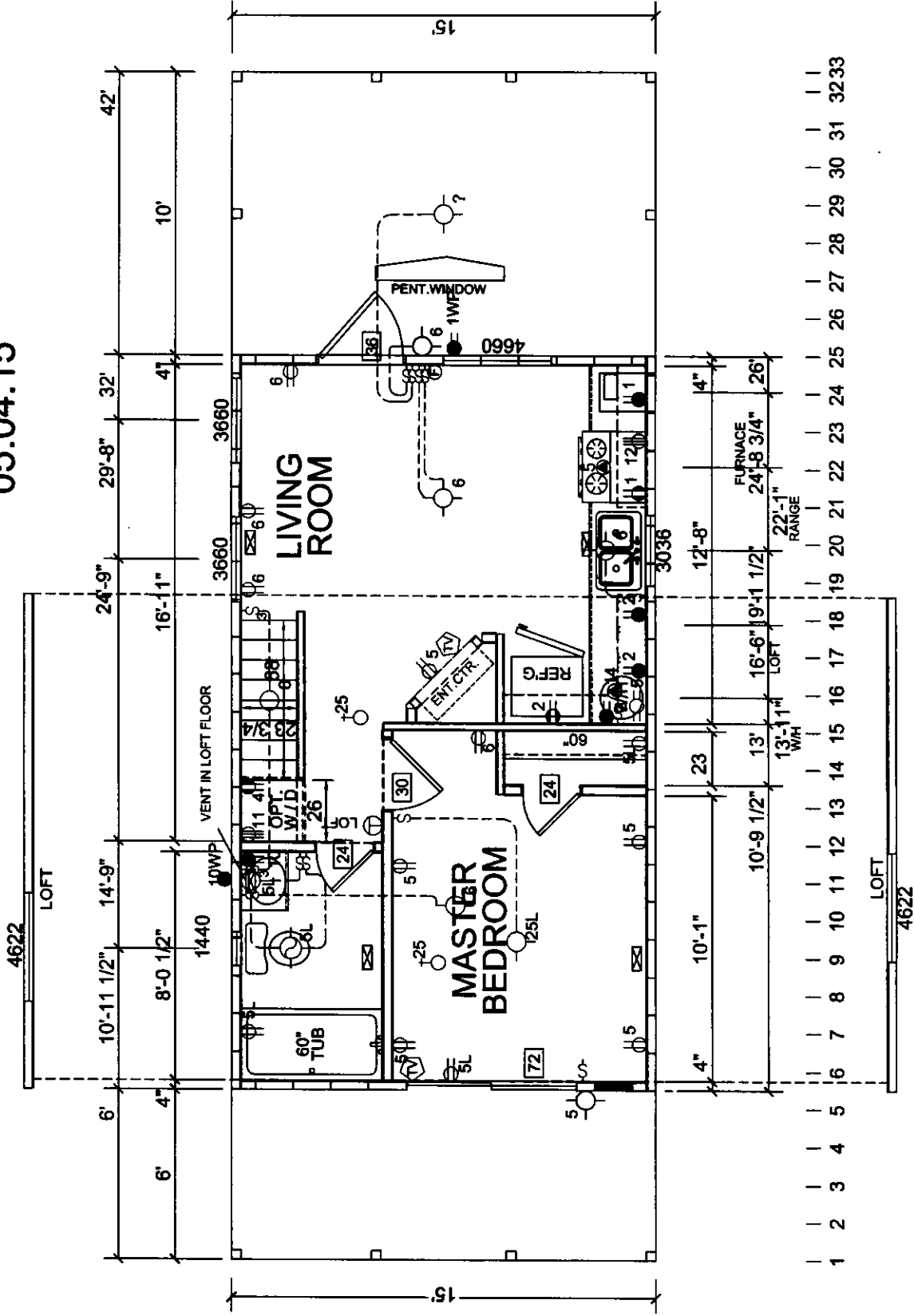


WHERE LOVE LIVES





ZINC
NOREEN
05.04.15

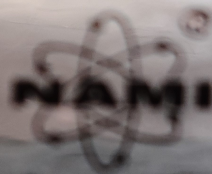


	APPROVER'S SEAL	MODIFICATIONS	SHEET:
	MODEL: 05-514-FD-LOFT 390 SQ FT 1 BEDROOM 1 BATH W/DECK TITLE: FLOOR PLAN		
PROPRIETARY AND CONFIDENTIAL THESE DRAWINGS AND SPECIFICATIONS ARE ORIGINAL PROPRIETARY AND CONFIDENTIAL MATERIALS OF CHAMPION. COPYRIGHT © 1976-2011 BY CHAMPION			DRAWN BY: STAFF DATE: 10-24-12
3200 ENTERPRISE AVE. YORK, NE 68467			AP-101

5108

JELD-WEN.

Manufactured By:
JELD-WEN Exterior Door
Ligonier, IN



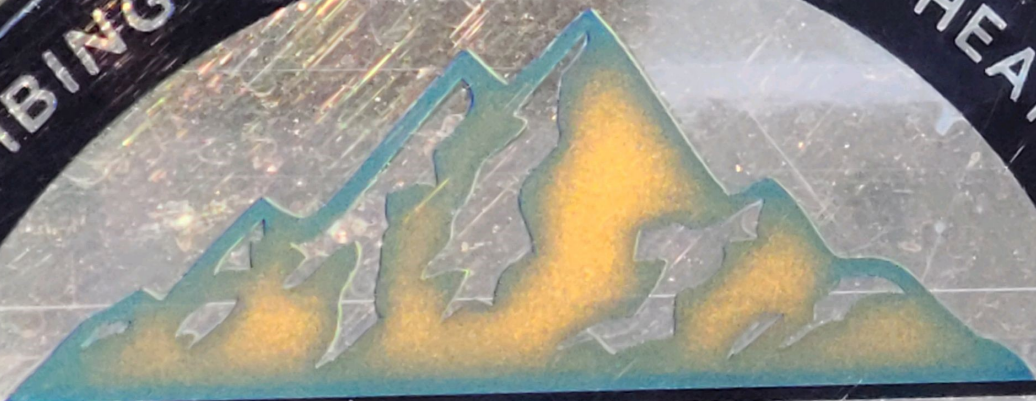
— NAMI VALIDATED —

Manufacturer stipulates conformance to HUD UM89
and complies with AAMA 1702.2-95 under Federal
Manufactured Housing Specification 3280.405.

Code: C-124-1

Series: Insulated Steel Door

ELECTRICAL • PLUMBING • CONSTRUCTION • HEATING • FIRE SAFETY



RVIA

MANUFACTURER CERTIFIES COMPLIANCE
WITH RECREATIONAL PARK TRAILER
STANDARD - ANSI A119.5

1008522

PARK TRAILERS