

NOTICE OF PUBLIC HEARING(S)

Copy/MATLED 5/6/21  
EK

This notice provides options to access to the Planning Commission and Board of County Commissioners' hearings on the following Quasi-Judicial land use matter. **The item is scheduled for the May 20, 2021 Planning Commission beginning at 1:00 p.m. and the June 8, 2021 Board of County Commissioners' hearing, which is to set the special district hearing date to be heard before the Board of County Commissioner' on July 6, 2021 beginning at 9:00 a.m. located in the Centennial Hall Hearing Room located at 200 S. Cascade Avenue, Colorado Springs.**

ID-20-004

PARSONS

**SPECIAL DISTRICT SERVICE PLAN  
CLOVERLEAF METROPOLITAN DISTRICT**

A request by PT Cloverleaf, LLC, for approval of a Colorado Revised Statutes Title 32 Special District service plan for the Cloverleaf Metropolitan District. The four (4) parcels, totaling 37.27 acres, proposed for inclusion into the district are zoned RS-20000 (Residential Suburban) and RS-5000 (Residential Suburban), and are located immediately north of Higby Road and east of Jackson Creek Parkway, and are within Sections 23 and 24, Township 11 South, Range 67 West of the 6th P.M. The proposed service plan includes the following: a maximum debt authorization of \$8 million, a debt service mill levy of 50 mills for residential, a debt service mill levy of 5 mills for special purpose, and an operations and maintenance mill levy of 10 mills, for a total maximum combined mill levy of 65 mills. The statutory purposes of the districts include the provision of the following: 1) street improvements and safety protection; 2) design, construction, and maintenance of drainage facilities; 3) design, land acquisition, construction, and maintenance of recreation facilities; 4) mosquito control; 5) design, acquisition, construction, installation, and operation and maintenance of television relay and translation facilities; 6) covenant enforcement; and 7) design, construction, and maintenance of public water and sanitation systems. The property is not included within the boundaries of a small area plan. (Parcel Nos. 71242-02-239, 71242-02-240, 71242-02-236, and 71231-03-007) (Commissioner District No. 1)

**Type of Hearing: Quasi-Judicial**

**Planner: Kari Parsons (kariparsons@elpasoco.com)**

El Paso County is committed to full access and transparency while the community works through the COVID-19 crisis. That also means balancing public safety and keeping essential parts of County government open for business. Here are the ways you can participate in quasi-judicial land-use items coming up before the Planning Commission and the Board of County Commissioners:

**Watch the Live Hearings Remotely**

If you are interested in watching the Planning Commission or Board of County Commissioners' hearing live, please go to <https://www.elpasoco.com/news-information-channel/> or visit El Paso County's Facebook page at <https://www.facebook.com/ElPasoCountyCO/> at the scheduled time of the hearing. Staff will be monitoring the County's Facebook Live feed, so please feel free to ask questions or provide any comments you might have; however, any testimony you wish to provide must be done by following the "Participate Remotely" procedures listed below.

**Participate Remotely**

Due to COVID-19, we are recommending that you participate in the hearing remotely. If you would like to provide testimony on an item being heard by the Planning Commission or the Board of County Commissioners, please email Elena Krebs at [ElenaKrebs@elpasoco.com](mailto:ElenaKrebs@elpasoco.com) with your name and the best phone number to be reached at and include any documents you would like provided to the hearing body as part of

the official record. **NOTE: New exhibits are not permitted via email the day of hearing. All exhibits must be emailed to Ms. Krebs no later than one day prior to each of the above listed hearings.**

A list of individuals wishing to testify will be provided to the Chair in advance of the meeting. When it's time for public testimony on the item you'd like to testify on will receive a phone call at the number you provided and will be brought into the meeting remotely so you can address the hearing body.

**Arrive in person (the address is 200 S. Cascade Ave, Colorado Springs, CO 80903)**

- In-person attendance at Planning Commission and Board of County Commissioner hearings is permitted, but it is highly discouraged.
  - Strict social/physical distancing must be maintained if you arrive to present or testify in person.
  - You must be separated by at least two chairs and one row of seating in the auditorium.
  - Please pay special attention to any communication you receive regarding the time your item will be heard.
-

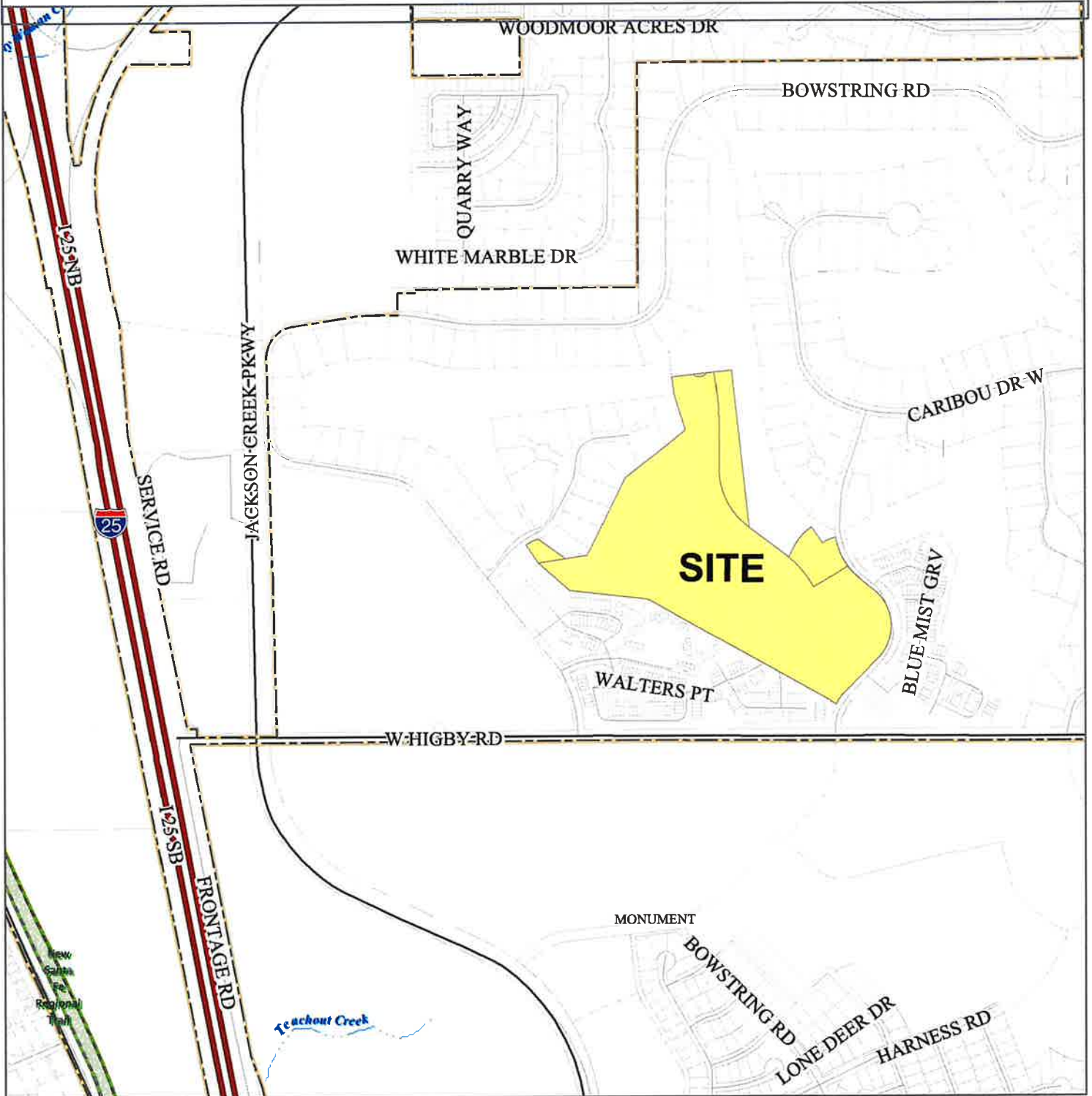
# El Paso County Parcel Information

| PARCEL     | NAME              |
|------------|-------------------|
| 7123103007 | PT CLOVERLEAF LLC |
| 7124202236 | PT CLOVERLEAF LLC |
| 7124202239 | PT CLOVERLEAF LLC |
| 7124202240 | PT CLOVERLEAF LLC |

File Name: ID-20-004

Zone Map No. --

Date: April 29, 2021



Please report any parcel discrepancies to:  
El Paso County Assessor  
1675 W. Garden of the Gods Rd.  
Colorado Springs, CO 80907  
(719) 520-6600



COPYRIGHT 2018 by the Board of County Commissioners, El Paso County, Colorado. All rights reserved. No part of this document or data contained hereon may be reproduced; used to prepare derivative products; or distributed without the specific written approval of the Board of County Commissioners, El Paso County, Colorado. This document was prepared from the best data available at the time of printing. El Paso County, Colorado, makes no claim as to the completeness or accuracy of the data contained hereon.

7124202074  
ALLEN WILLIAM R  
1242 TIMBER RUN HTS  
MONUMENT, CO 80132

7124204130  
AMIDEI IVALENE  
17072 BLUE MIST GRV  
MONUMENT, CO 80132

7124202079  
AUDETTE JANELL F  
1297 TIMBER RUN HTS  
MONUMENT, CO 80132

7124202072  
AUNG LU MIN  
1254 TIMBER RUN HTS  
MONUMENT, CO 80132

7124204137  
BATES DENNIS A  
888 TIMBER LAKES GRV  
MONUMENT, CO 80132

7124204100  
BAUGH LIZABETH ANNE  
540 HARNESS RD  
MONUMENT, CO 80132

7124202020  
BAUTH VICKIE  
1120 MAGIC LAMP WAY UNIT 2  
MONUMENT, CO 80132

7124202181  
BECK RACHEL  
1046 WALTERS PT  
MONUMENT, CO 80132

7123103004  
BEDOYA ANDREI  
17265 LEGGINS WAY  
MONUMENT, CO 80132

7124204135  
BEER ALICIA L  
887 TIMBER LAKES GRV  
MONUMENT, CO 80132

7124204106  
BENTSON LEON R  
17027 BLUE MIST GRV  
MONUMENT, CO 80132

7124202231  
BLOOM JAMES C  
1813 EDWARD WAY  
PITTSBURGH, PA 15203

7124203007  
BOEHM TIMOTHY A  
17330 CLOVERLEAF RD  
MONUMENT, CO 80132

7124204148  
BOPP RICHARD N JR  
1140 GENERALS HWY  
CROWNSVILLE, MD 21032

7124202105  
BOSWELL VALLERY J  
1257 WALTERS PT  
MONUMENT, CO 80132

7124204121  
BOWEN TIA J LIVING TRUST  
17036 BLUE MIST GRV  
MONUMENT, CO 80132

7124202091  
BULL IAN E  
1353 WALTERS PT  
MONUMENT, CO 80132

7124202089  
BURGGRAFF PATRICIA A  
1341 WALTERS PT  
MONUMENT, CO 80132

7124202214  
BURNING BUSH POINT LLC  
10501 MCMEEKIN LANE 102  
LOUISVILLE, KY 40223

7124202229  
CALLAN JAMES  
905 BURNING BUSH PT  
MONUMENT, CO 80132

7123103003  
CAMPBELL STACY  
17285 LEGGINS WAY  
MONUMENT, CO 80132

7124202193  
CARLSEN JAMES RICHARD  
1047 WALTERS PT  
MONUMENT, CO 80132

7124204115  
CARLSON NANCY  
17012 BLUE MIST GRV  
MONUMENT, CO 80132

7124204110  
CASSADY MARK ALLAN  
17043 BLUE MIST GRV  
MONUMENT, CO 80132

7124203005  
CASTLE STEVE G  
929 W CARIBOU DR  
MONUMENT, CO 80132

7124202210  
CASTLEBERRY LACEY  
940 BURNING BUSH PT  
MONUMENT, CO 80132

7124202176  
CHALANDE PIERRE A  
1009 BURNING BUSH PH  
MONUMENT, CO 80132

7124204114  
CHAU WAIFU  
17008 BLUE MIST GRV  
MONUMENT, CO 80132

7124202189  
CHEN ZHU  
996 BURNING BUSH PT  
MONUMENT, CO 80132

7124202090  
CHOI MISOOK  
1347 WALTERS PT  
MONUMENT, CO 80132

7124204040  
CLARK KATHRYN M  
17151 BLUE MIST GRV  
MONUMENT, CO 80132

7123103006  
COLEMAN BRAD A  
17235 LEGGINS WAY  
MONUMENT, CO 80132

7124203015  
COSH DOUGLAS G  
17310 CLOVERLEAF RD  
MONUMENT, CO 80132

7124202021  
COUNTRY RIDGE ESTATES RENTALS  
LLC  
100 FILLMORE ST 5TH FLOOR  
DENVER, CO 80206

7124204118  
COWLISHAW RONNETTE L  
17024 BLUE MIST GRV  
MONUMENT, CO 80132

7124204136  
COX DARREN  
898 TIMBER LAKES GRV  
MONUMENT, CO 80132

7124204003  
CROSS JACQUELYN K  
17285 CLOVERLEAF RD  
MONUMENT, CO 80132

7124202032  
CROWDER TRACY  
1160 MAGIC LAMP WAY #3  
MONUMENT, CO 80132

7124204038  
CROWLEY LESLIE L  
17159 BLUE MIST GRV  
MONUMENT, CO 80132

7124202036  
CRUM MARILYN K  
PO BOX 1113  
MONUMENT, CO 80132

7124204107  
CUMMINGS HEIDI M  
1329 SACRAMENTO ST APT 6  
SAN FRANCISCO, CA 94109

7124204132  
DE BORD TIMOTHY L  
5420 MOUNT DR  
SCHERERVILLE, IN 46375

7124204117  
DEMARCO ANTHONY ALLAN  
17020 BLUE MIST GRV  
MONUMENT, CO 80132

7124204123  
DENGLER KARL A  
17044 BLUE MIST GRV  
MONUMENT, CO 80132

7124202070  
DENNERT DRAKE W  
629 FOREST VIEW WAY  
MONUMENT, CO 80132

7124202097  
DEWITTE PATRICK B  
1305 WALTERS PT  
MONUMENT, CO 80132

7124202170  
DITTMER STEVAN W  
1017 BURNING BUSH PT  
MONUMENT, CO 80132

7124202068  
DUFFY PAMELA S  
1278 TIMBER RUN HTS  
MONUMENT, CO 80132

7124202085  
DURINGER VALERIE  
1255 TIMBER RUN HTS  
MONUMENT, CO 80132

7124202004  
ECKLUND ERIC  
1165 BOWSTRING RD  
MONUMENT, CO 80132

7124202045  
ELDAR MORAN  
820 S MONACO PKWY #183  
DENVER, CO 80224

7124202056  
ELLIS MERRILEE  
1352 WALTERS PT  
MONUMENT, CO 80132

7124202048  
ENOCHS BRETT EDWARD  
13737 W AMHERST WAY  
DENVER, CO 80228

7124202082  
ESTES ANDREA L  
1279 TIMBER RUN HTS  
MONUMENT, CO 80132

7124202208  
FAMIGLIETTI DAVID G  
17010 CROSS TIMBERS GRV  
MONUMENT, CO 80132

7124202080  
FERGUSON THOMAS C  
3940 SADDLE ROCK RD  
COLORADO SPRINGS, CO 80918

7124203006  
FERRANTI JEREMY  
921 CARIBOU DR W  
MONUMENT, CO 80132

7124202075  
FLINK ARI J  
6558 JEREMIE CT  
SAN JOSE, CA 95120

7124202034  
FLINT DON W  
PO BOX 898  
MONUMENT, CO 80132

7124202042  
FOLEY JOHN WILLIAM  
2060 SILKWOOD DR  
COLORADO SPRINGS, CO 80920

7124202023  
FREETON HOLDING LLC  
834-F S PERRY ST #336  
CASTLE ROCK, CO 80104

7124204037  
GIBSON TODD J  
3780 HIGHVIEW DR  
COLORADO SPRINGS, CO 80908

7124202063  
GIDEON LANCE  
1310 WALTERS PT  
MONUMENT, CO 80132

7124202094  
GIERE CURTIS C  
1323 WALTERS PT  
MONUMENT, CO 80132

7124202204  
GITHARA JOHN G  
964 BURNING BUSH PT  
MONUMENT, CO 80132

7124204004  
GOODBAR HEIDI L  
879 CARIBOU CIR  
MONUMENT, CO 80132

7124204146  
GRANT GARY H  
2527 CALLEJON DR NE  
ALBUQUERQUE, NM 87112

7124202173  
GUERRERO ROSALIE M  
1029 BURNING BUSH PT  
MONUMENT, CO 80132

7124204104  
HALIK EDWIN J JR LIVING TRUST  
14730 PRISTINE DR  
COLORADO SPRINGS, CO 80921

7124204145  
HANSEN DARCY M  
18015 SADDLEWOOD RD  
MONUMENT, CO 80132

7124202022  
HARNESS WENDY S  
1120 MAGIC LAMP WAY UNIT 6  
MONUMENT, CO 80132

7123103002  
HARVEY ROBERT C  
17325 LEGGINS WAY  
MONUMENT, CO 80132

7124202025  
HAU LIHN NGOC  
790 WINDING HILLS RD  
MONUMENT, CO 80132

7124202106  
HAZLIP BRIAN  
1251 WALTERS PT  
MONUMENT, CO 80132

7124202093  
HENDERSON RONALD EUGENE  
1329 WALTERS PT  
MONUMENT, CO 80132

7124202192  
HERNANDEZ HERNANDO &  
1053 WALTERS PT  
MONUMENT, CO 80132

7124202180  
HESS AMANDA K  
1052 WALTERS PT  
MONUMENT, CO 80132

7124202029  
HIRANO MASAKI  
1140 MAGIC LAMP WAY UNIT 3  
MONUMENT, CO 80132

7123103005  
HOLLINGSWORTH BRIAN K  
17245 LEGGINS WAY  
MONUMENT, CO 80132

7124202081  
HOWARD DONNA L  
1285 TIMBER RUN HTS  
MONUMENT, CO 80132

7124202002  
HUGHES HILARY HEATHER  
1145 BOWSTRING RD  
MONUMENT, CO 80132

7124202071  
HUNDLEY DESARAE A  
1260 TIMBER RUN HTS  
MONUMENT, CO 80132

7124204101  
HUTCHINSON BONNIE M  
8720 WINDSOR LAKE BLVD APT 215  
COLUMBIA, SC 29223

7124203004  
HWANG KUM JA  
937 CARIBOU DR W  
MONUMENT, CO 80132

7124203003  
HYATT NATHAN A  
1099 W CARIBOU DR UNIT W  
MONUMENT, CO 80132

7124202046  
IOZZI DOLORES E  
1030 MAGIC LAMP WAY UNIT 5C  
MONUMENT, CO 80132

7124204131  
JAYNAN LLC  
3980 FOXCHASE WAY  
COLORADO SPRINGS, CO 80908

7124204147  
JENSEN NICHOLAS FRASER  
17164 BLUE MIST GRV  
MONUMENT, CO 80132

7124202177  
JEPSON BRYAN  
1005 BURNING BUSH PT  
MONUMENT, CO 80132

7124203017  
JOHNSON MILTON S  
19725 SOARING WING DR  
COLORADO SPRINGS, CO 80908

7124204129  
JONES DAVID  
17068 BLUE MIST GRV  
MONUMENT, CO 80132

7124202211  
JONES KATHRYN ANN TRUST  
8653 W MELINDA LN  
PEORIA, AZ 85382

7124202171  
JONES TIMOTHY D  
1021 BURNING BUSH PT  
MONUMENT, CO 80132

7124202077  
KENEFICK JOHN J  
1224 TIMBER RUN HTS  
MONUMENT, CO 80132

7124203011  
KING CORY DEAN  
17320 CLOVERLEAF RD  
MONUMENT, CO 80132

7124202019  
KIRBY STEVEN C  
1120 MAGIC LAMP WAY APT A  
MONUMENT, CO 80132

7124204119  
KLEIST ROBERT C JR  
17028 BLUE MIST GRV  
MONUMENT, CO 80132

7124202083  
KUPFER MARGARET J  
1273 TIMBER RUN HTS  
MONUMENT, CO 80132

7124204036  
LAANSMA JAN E  
17167 BLUE MIST GRV  
MONUMENT, CO 80132

7124202061  
LANG ARIANNA L  
1322 WALTERS PT  
MONUMENT, CO 80132

7124204105  
LEE SCOTT G  
17023 BLUE MIST GRV  
MONUMENT, CO 80132

7124202060  
LEGACY INVESTMENTS LLC  
405 SAINT MORITZ WAY  
MONUMENT, CO 80132

7124202190  
LEWERKE STACEY LYNN  
992 BURNING BUSH PT  
MONUMENT, CO 80132

7124202206  
LINDSTROM IMA R  
17018 CROSS TIMBERS GRV  
MONUMENT, CO 80132

7124204113  
LITTRELL GLENN L SR  
17004 BLUE MIST GRV  
MONUMENT, CO 80132

7124202043  
MAESTAS LINDA B  
1050 MAGIC LAMP WAY UNIT D  
MONUMENT, CO 80132

7124202230  
MAHDER MITCHELL  
909 BURNING BUSH PT  
MONUMENT, CO 80132

7124202096  
MARSHALL JARED LEE  
1311 WALTERS PT  
MONUMENT, CO 80132

7124202027  
MAY MICHAEL  
9585 MOHAWK TRAIL  
CASCADE, CO 80809

7124204108  
MCCLAIN AMANDA  
17035 BLUE MIST GRV  
MONUMENT, CO 80132

7124204122  
MCDANIEL JAMES E  
17040 BLUE MIST GRV  
MONUMENT, CO 80132

7123102039  
MEDELIUS MARIANELLA  
17360 LEGGINS WAY  
MONUMENT, CO 80132

7124204128  
MEIFERT FAMILY TRUST  
13524 E CEDARPINE LN  
MOORPARK, CA 93021

7124204138  
MERCHANT DANIEL EDWARD  
878 TIMBER LAKES GRV  
MONUMENT, CO 80132

7124202035  
MEYERS BRIAN A  
1160 MAGIC LAMP WAY APT D  
MONUMENT, CO 80132

7124204102  
MIKEC KRISTIN  
17011 BLUE MIST GRV  
MONUMENT, CO 80132

7124202191  
MITCHELL MARLENE D  
988 BURNING BUSH PT  
MONUMENT, CO 80132

7124204103  
MONDRAGON JAMES  
17015 BLUE MIST GRV  
MONUMENT, CO 80132

7124202028  
MOONSTONE ENTERPRISES LLC  
13849 RIVERCREST CIR  
COLORADO SPRINGS, CO 80921

7124202179  
MORENO DOLORES KYLE  
1058 WALTERS PT  
MONUMENT, CO 80132



7124202040  
MORRELL MARY  
1050 MAGIC LAMP WAY UNIT E  
MONUMENT, CO 80132

7124204144  
MOZER ELIZABETH J  
182 S LAFAYETTE ST  
DENVER, CO 80209

7124202086  
MURRAY ALAN  
9323 PRAIRIE DUNES RD  
PEYTON, CO 80831

7124202066  
NAJDZION MATTHEW D  
1290 TIMBER RUN HTS  
MONUMENT, CO 80132

7124202006  
NASH PETER B  
17380 LEGGINS WAY  
MONUMENT, CO 80132

7124202064  
NEDBALSKI ASHLEY E  
1304 WALTERS PT  
MONUMENT, CO 80132

7124202047  
NELSON SPENCER T  
1030 MAGIC LAMP WAY UNIT 5D  
MONUMENT, CO 80132

7124202057  
NOLT ALAINE K  
1346 WALTERS PT  
MONUMENT, CO 80132

7124204120  
NOULEKOUN SENA B  
17032 BLUE MIST GRV  
MONUMENT, CO 80132

7124202026  
OLSON ANNETTE T  
430 HARNESS WAY  
MONUMENT, CO 80132

7124204134  
PALMER ONE LLC  
23 COMMERCE ST  
COLORADO SPRINGS, CO 80907

7124202213  
PAPE MELINDA K  
5878 CANYON RESERVE HTS  
COLORADO SPRINGS, CO 80919

7124202073  
PATTI CHARLES A  
1248 TIMBER RUN HTS  
MONUMENT, CO 80132

7124202194  
PERKIN VALERIE L  
1041 WALTERS PT  
MONUMENT, CO 80132

7124202174  
PLEASANT PROPERTIES LLC  
3303 SW 77TH ST  
LINCOLN, NE 68532

7124202236  
PT CLOVERLEAF LLC  
1846 WOODMOOR DR STE 100  
MONUMENT, CO 80132

7124202240  
PT CLOVERLEAF LLC  
1836 WOODMOOR DR STE 100  
MONUMENT, CO 80132

7124202095  
RANDALL MELANEE A  
1317 WALTERS PT  
MONUMENT, CO 80132

7124202076  
RAYNER JAMES R  
5930 THURBER DR  
COLORADO SPRINGS, CO 80924

7124202175  
RCKDJ VENTURES LLC  
16680 CURLED OAK DR  
MONUMENT, CO 80132

7124202024  
REED DAVID B  
1120 MAGIC LAMP WAY UNIT 4  
MONUMENT, CO 80132

7124202033  
RINCON NIKOLE MARIE  
1160 MAGIC LAMP WAY UNIT 6  
MONUMENT, CO 80132

7124202059  
ROUNTREE THOMAS  
1334 WALTERS PT  
MONUMENT, CO 80132

7124202005  
SALE MICHAEL P  
1185 BOWSTRING RD  
MONUMENT, CO 80132

7123103008  
SANDY CHRISTOPHER KEY  
17205 LEGGINS WAY  
MONUMENT, CO 80132

7124204039  
SHARON GRADY SURVIVORS TRUST  
19570 BROKEN FENCE WAY  
MONUMENT, CO 80132

7124204125  
SHERRY CHARLES L  
17052 BLUE MIST GRV  
MONUMENT, CO 80132

7124202183  
SIDNEY MANAGEMENT LLC  
1286 KENASHA DR  
LARKSPUR, CO 80118

7124202007  
SINK KEVIN H JR  
17375 LEGGINS WAY  
MONUMENT, CO 80132

7124204124  
SITTNER JAMES A  
PO BOX 1008  
MONUMENT, CO 80132



7124204126  
SMARSH TERESA  
17056 BLUE MIST GRV  
MONUMENT, CO 80132

7124204109  
SMITH CHARLES  
PO BOX 2512  
MONUMENT, CO 80132

7124202205  
SMITH MARIETTA S  
17022 CROSS TIMBERS GRV  
MONUMENT, CO 80132

7124202069  
SOWLES REVOCABLE LIVING TRUST  
42335 WASHINGTON ST STE F  
PALM DESERT, CA 92211

7124202212  
SPH PROPERTY TWO LLC  
PO BOX 21907  
SEATTLE, WA 98101

7124202172  
STEFFEL AMY MICHELLE  
1025 BURNING BUSH PT  
MONUMENT, CO 80132

7124202182  
STUMPF JEFFREY M  
1040 WALTERS PT  
MONUMENT, CO 80132

7123102040  
SUSTAITA BRENT E  
17370 LEGGINS WAY  
MONUMENT, CO 80132

7124202078  
TALBOTT MARTHA A  
1218 TIMBER RUN HTS  
MONUMENT, CO 80132

7124204116  
TATE GREGORY TRUST  
1497 WISHING WELL VW  
MONUMENT, CO 80132

7124202062  
THEKEN NANCY  
9439 BANDLEY DR  
FOUNTAIN, CO 80817

7124203016  
TMH LIVING TRUST  
17290 CLOVERLEAF RD  
MONUMENT, CO 80132

7123102031  
VIDANO STEPHEN R  
1685 BOWSTRING RD  
MONUMENT, CO 80132

7124202084  
VOGA ROGER  
1261 TIMBER RUN HTS  
MONUMENT, CO 80132

7124202041  
VON SEGGERN YOMBA A  
834-F S PERRY ST PMB 336  
CASTLE ROCK, CO 80104

7124202065  
WAY DANIEL C  
1296 TIMBER RUN HEIGHTS  
MONUMENT, CO 80132

7124202207  
WHELAN RICHARD W  
4954 MUSHROOM ROCK CT  
COLORADO SPRINGS, CO 80924

7124202058  
WHITSON KATHRYN L  
1340 WALTERS PT  
MONUMENT, CO 80132

7124204127  
WIEROK PROPERTIES LLC  
16930 OLD BOROUGH  
MONUMENT, CO 80132

7124202234  
WOODMOOR PARK HOMEOWNERS  
1975 RESEARCH PKWY STE 320  
COLORADO SPRINGS, CO 80920

7124202235  
WOODMOOR PARK HOMEOWNERS  
4325 N NEVADA AVE #100  
COLORADO SPRINGS, CO 80907

7124204149  
WOODMOOR PARK HOMEOWNERS  
ASSN INC  
10 N MEADE AVE  
COLORADO SPRINGS, CO 80909

7123102046  
WOODMOOR WATER & SANITATION  
PO BOX 1407  
MONUMENT, CO 80132

7124202178  
WOOLBRIGHT MATTHEW M  
12 RIVIERA  
TRABUCO CANYON, CA 92679

7124202003  
WOSC LLC  
902 CARIBOU DR W  
MONUMENT, CO 80132

7124202038  
ZAHN BRENDAN  
17310 COLONIAL PARK  
MONUMENT, CO 80132

7124202088  
CARI RE PROPERTY 2 LLC  
4865 HIDDEN ROCK RD  
COLORADO SPRINGS, CO 80908

7124202044  
1030 MAGIC LAMP WAY UNIT 5A LLC  
1030 MAGIC LAMP WAY UNIT 5A  
COLORADO SPRINGS, CO 80903

7124202087  
1243 TIMBER RUN LAND TRUST  
545 3RD ST #2302  
MONUMENT, CO 80132

7124202067  
1284 TIMBER RUN HEIGHTS  
545 3RD ST # 2302  
MONUMENT, CO 80132

7124202195  
2002 MUNCEY FAMILY TRUST  
1918 DIAMOND CREEK  
COLORADO SPRINGS, CO 80921

7123103001  
BRG 2013 LLC  
9741 ABINGTON CT  
FAIRFAX, VA 22032