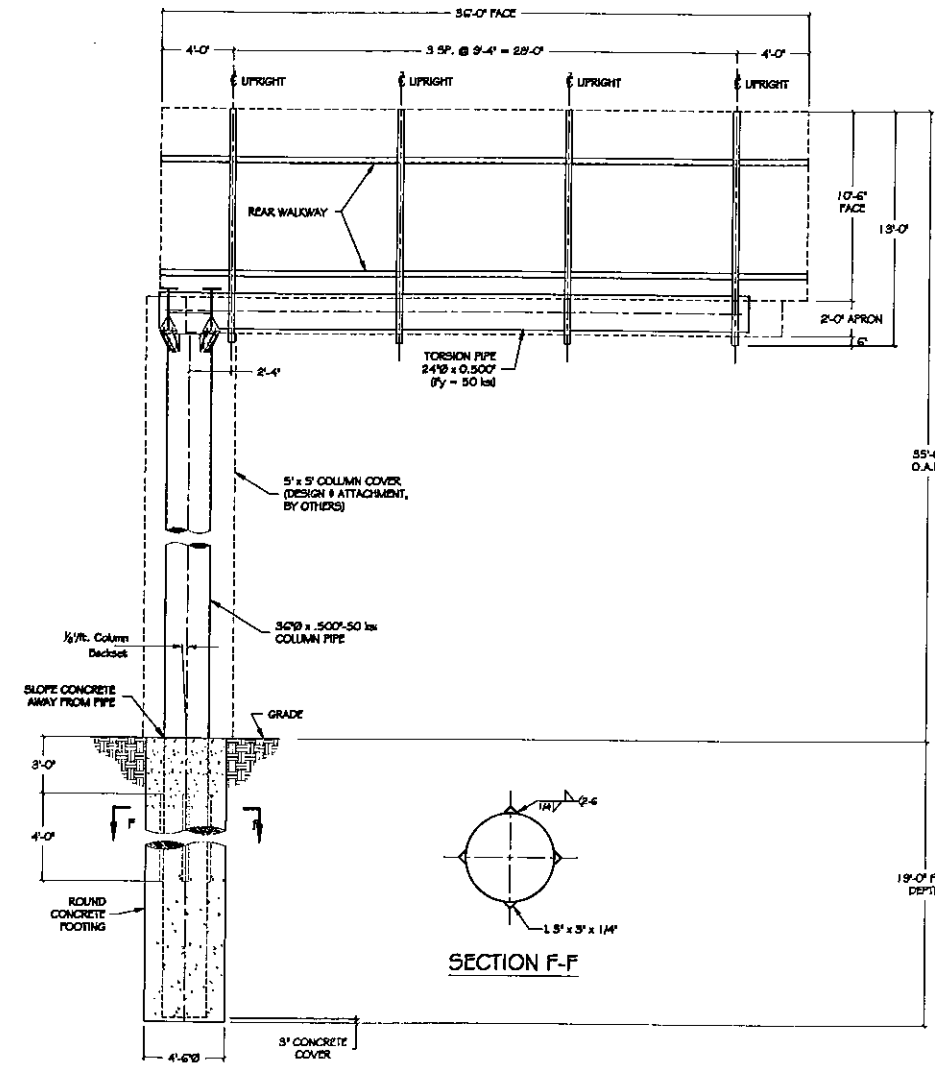
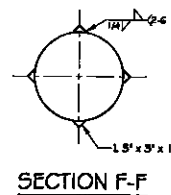


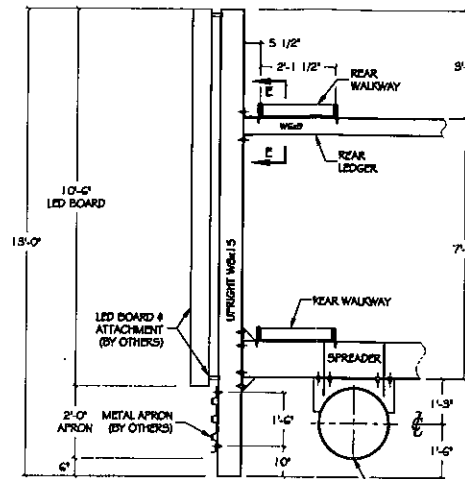
PLAN VIEW



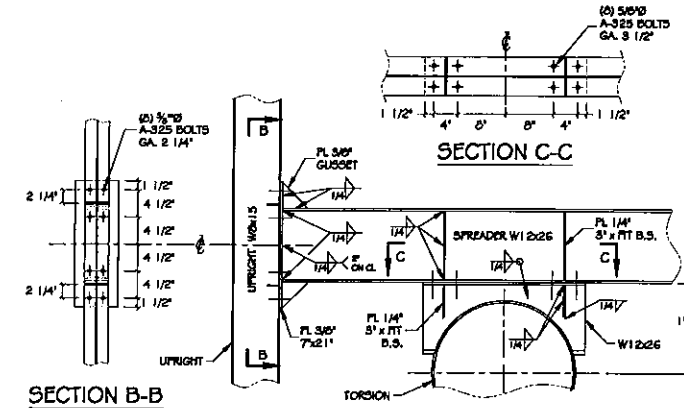
ELEVATION



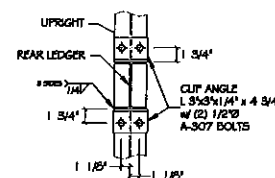
SECTION F-F



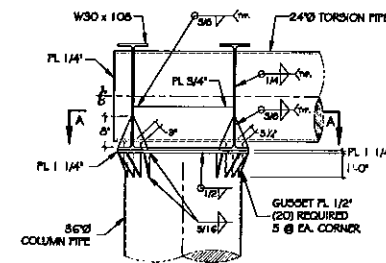
TYPICAL SECTION THRU SIGN



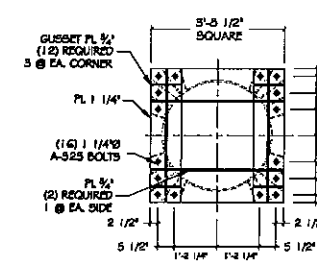
UPRIGHT-TORSION-SPREADER CONNECTION



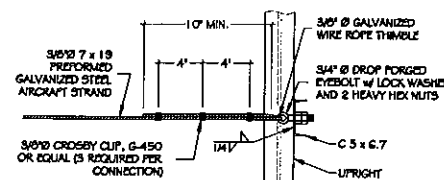
SECTION E-E



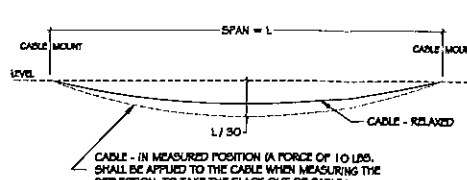
COLUMN-TORSION CONNECTION



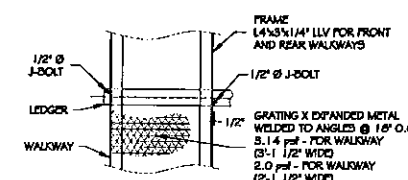
SECTION A-A



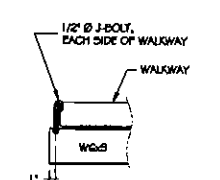
SAFETY CABLE MOUNTING



SAFETY CABLE TENSION



TYPICAL WALKWAY DETAIL



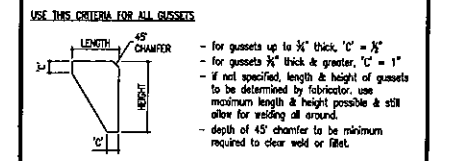
WALKWAY MOUNTING DETAIL

NOTES

- 1) Footing design based on class 4 soil conditions of sand, silty sand, clayey sand, silty gravel & clayey gravel, or better. Allowable lateral design soil pressure = 150 psf/ft. of depth.
- 2) Provide 1/4" cap plates for ends of torsion pipe. Cap plates to be welded, all around, to pipe.
- 3) This structure has been designed to support (2) LED Boards @ 4,800 lb. each.
- 4) Design & construction of LED Board and attachment of board to structure, by others. Verify all mounting requirements with Mfg.

9/23/19	Changed OAH to 35'-0". Modified footing depth.	R1
DATE	REVISION	NO.

TYPICAL GUSSET DETAIL



GENERAL NOTES

- ALL NUTS AND BOLTS ARE TO BE ZINC PLATED. (except A-490 bolts, which are not to be plated, but primed and painted after installation)
- THE CONTRACTOR SHALL VERIFY ALL DIMENSIONS AND CONDITIONS IN FIELD BEFORE FABRICATION OR CONSTRUCTION, AND NOTIFY ENGINEER OF ANY DISCREPANCIES
- ANY DEVIATIONS FROM THIS PRINT MUST BE APPROVED BY ENGINEER.
- STRUCTURAL STEEL SHAPES & PLATES SHALL CONFORM TO THE REQUIREMENTS OF A.S.T.M. A-36, and WIDE FLANGES TO A.S.T.M. A992. (except structural tubing, which shall conform to A-500, grade B)
- ALL STEEL PIPE SHALL CONFORM TO THE REQUIREMENTS OF A.S.T.M. A-53, GRADE B OR A-252, GRADE 2; UNLESS OTHERWISE NOTED.
- ALL STRUCTURAL STEEL SHALL BE PROVIDED, FABRICATED, AND ERRECTED IN ACCORDANCE TO THE LATEST A.I.S.C. SPECIFICATIONS AND STANDARD PRACTICES.
- ALL WELDING SHALL BE IN ACCORDANCE WITH A.W.S. STANDARDS. WELDING TO BE PERFORMED BY CERTIFIED WELDERS USING E-70 ELECTRODES.
- CONCRETE SHALL ATTAIN A MINIMUM COMPRESSIVE STRENGTH OF $F_c = 3000$ p.s.i. IN 28 DAYS, UNLESS OTHERWISE NOTED.
- CONTRACTOR TO ENSURE THAT ALL WORK IS PERFORMED IN ACCORDANCE WITH FEDERAL, STATE, & LOCAL CODES & ORDINANCES, AND U.S.A. SAFETY REGULATIONS.
- OWNER TO PROVIDE AN A.S.T.M. APPROVED FLEXIBLE LIFELINE SYSTEM FOR ALL WALKWAYS.
- VERIFY WITH OWNER ALL SIGN HEAD ACCESS REQUIREMENTS. (i.e. COLUMN & ACCESS LADDER(S), CROSSOVER/WALK-AROUND CATWALKS, etc.)
- VERIFY CORRECT STRINGER SPACING WITH OWNER PRIOR TO FABRICATION.
- H.A.C.L. = Height Above Ground Level

APPLICABLE BUILDING CODE AND WIND SPEED:
2015 I.B.C. (115 mph - Exp. C) - Risk Cat. II

Effective Engineering Solutions, LTD.
23763 Saddle Creek Drive
Manhattan, IL 60442
(815) 485-1470

PROJECT:
10'-6" x 36' Full Flag ~ 10' V
LED Sign Structure @ 35'-0" Overall Height

CLIENT:
RMG Outdoor Inc. G-11227
4426 North 24th Street, Suite 200
Phoenix, Arizona 85018
Phx (602) 950-8034 Fax (602) 230-8074

THIS PRINT CONTAINS PROPRIETARY INFORMATION AND SHALL NOT BE USED, REPRODUCED, OR ITS CONTENTS DISCLOSED, IN WHOLE OR IN PART, WITHOUT WRITTEN CONSENT FROM THE ABOVE CLIENT.

THE UNDERSIGNED ENGINEER WILL NOT SUPERVISE THE FABRICATION AND ERECTION OF THIS STRUCTURE.

AFFIX SEAL:	LOCATION: Lamar - Detroit Clinton Township, MI
FEEL JOB NO:	75006
ENGINEERED BY:	CWL
DRAWN BY:	DBM
DATE DRAWN:	8/14/2019
DRAWING NO:	1 of 1 74838-R1