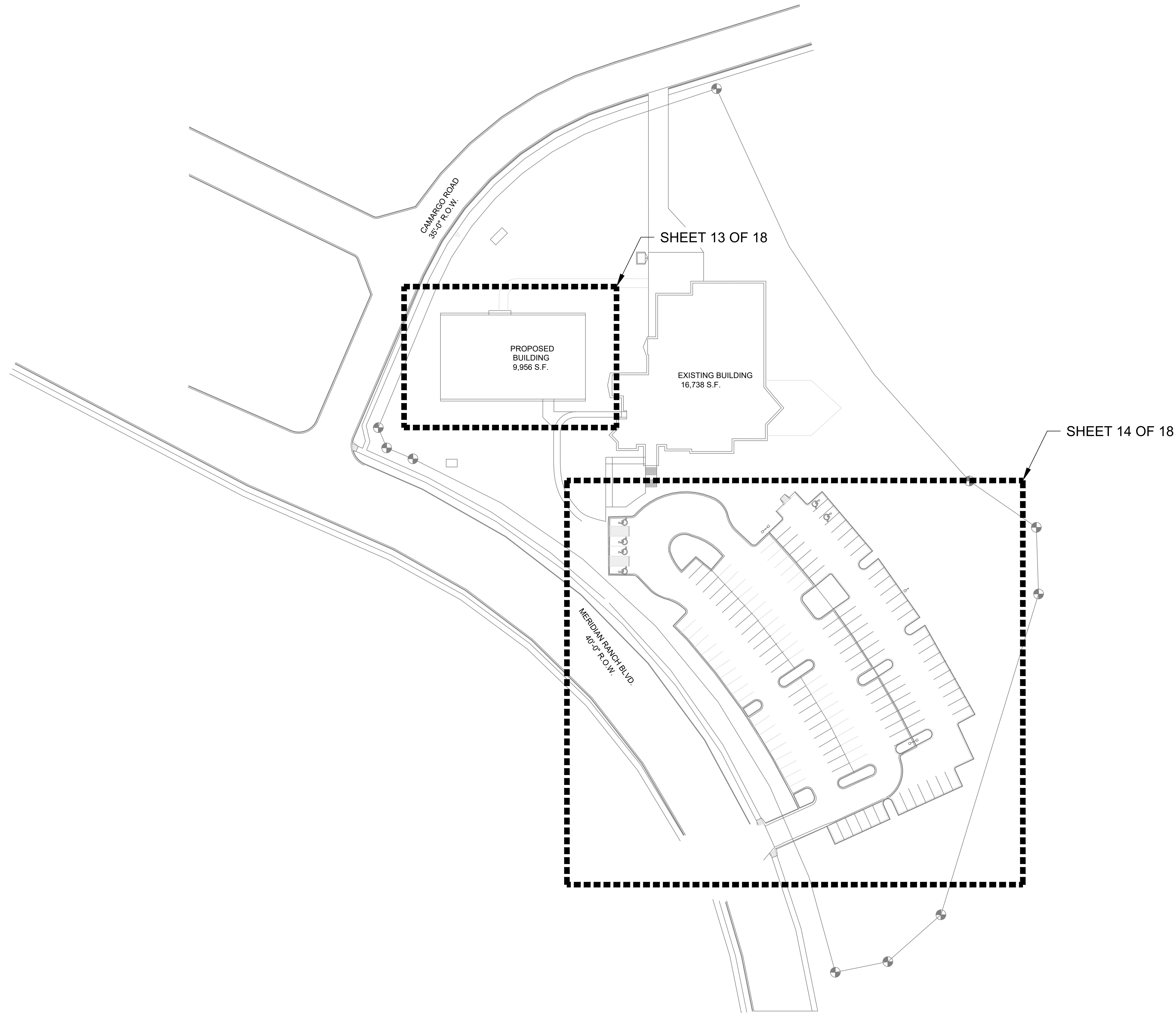
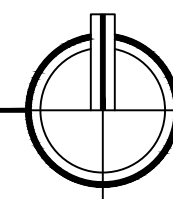


PLT DATE: 12/20/20 2:54 PM BY: EBWA PROJ. FILE P:\Hammers Construction\Woodmen Hills Rec Center East Design Build\Photometrics\Woodmen Hills Rec Center - Photometrics.dwg



OVERALL SITE PLAN  
SCALE: NTS



**51EC INC.**  
31 NORTH TEJON ST, SUITE 304  
COLORADO SPRINGS, CO 80903  
FIFTYONEEC.COM | 719.368.7394

THIS DOCUMENT AND ITS CONTENTS ARE THE WORK PRODUCT AND PROPERTY OF 51EC, INC., WHICH RETAINS ALL COMMON LAW, STATUTORY AND OTHER RESERVED RIGHTS, INCLUDING THE COPYRIGHT.

**NEW DESIGN BUILD**  
WOODMEN HILLS METRO DISTRICT  
9205 MERIDIAN RANCH BLVD.  
PEYTON, CO 80831

REV	DESCRIPTION	DRAWN	CHECK	APPR	DATE

ISSUANCE:  
**ISSUED FOR PERMIT**

CLIENT:  
HAMMERS CONSTRUCTION  
1411 WOOLSEY HEIGHTS  
COLORADO SPRINGS, CO 80915

ARCHITECT:  
HAMMERS CONSTRUCTION  
1411 WOOLSEY HEIGHTS  
COLORADO SPRINGS, CO 80915

PROJECT NO:  
5151-20-09

TITLE:  
**OVERALL SITE PLAN**

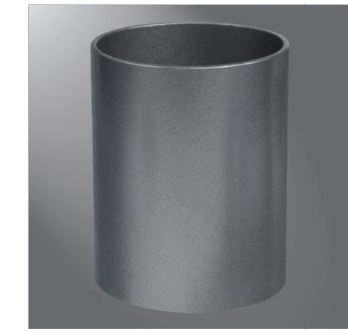
SHEET NO:  
**12 OF 18**











**RSA ROUND STRAIGHT ALUMINUM**

Catalog #		Type
Project		
Comments		Date
Prepared by		

- FEATURES**
- Straight round shaft 6063-T6 aluminum alloy polished
  - Cast aluminum alloy base with aluminum bolt covers
  - Anchor bolt per ASTM A576
  - 8" 20" mounting heights
  - Drilled or tenon (specify)

**DESIGN CONSIDERATIONS**

Wind induced vibrations resulting from steady, unidirectional winds and other aerodynamic forces, as well as vibration and coefficient of height factors for non-grounded mounted installations (e.g., installations on bridges or buildings) are not included in this document. The information contained herein is for general guidance only and is not a replacement for professional judgement. Consult with a professional, and local and federal standards, before ordering to ensure product is appropriate for the intended purpose and installation location. Also, please review Cooper Lighting Solutions' Light Pole White Paper for risk factors and design considerations. [LEARN MORE](#)

Specifications and dimensions subject to change without notice. Consult your lighting representative at Cooper Lighting Solutions or visit [www.cooperlighting.com](http://www.cooperlighting.com) for available options, accessories and ordering information.

**ORDERING INFORMATION**

**SAMPLE NUMBER: RSA120A11**

Product Family	Shaft Size (Inches)	Wall Thickness (Inches)	Mounting Height (Feet)	Base Type	Finish	Mounting Type	Number and Location of Arms	Options (Add as Suffix)
RSA-Round Straight Aluminum	4-4"	T-0.120"	06-8'	A-Aluminum (4-Bolt)	A-Satin Brushed Aluminum	2-2-3/8" O.D. Tenon (4' Long)	1-Single 2-2 at 180°	A-1/2" Tapped Hub + B-3/8" Tapped Hub + C-Convenience Outlet + D-Base Cover for 2" Base E-DSI Convenience Outlet + F-Vibration Pad G-Sound Lug H-Additional Hand Hole + W-Vibration Damper
	5-2"	M-0.188"	10-10'	N-Aluminum (3-Bolt)	B-Clear Anodized C-Dark Bronze Anodized D-Black Anodized E-Medium Bronze Anodized	2-2-3/8" O.D. Tenon (8' Long)	2-2 at 90°	
			15-15'			3-3" O.D. Tenon (8' Long)	4-4 at 90°	
			18-18'			4-4" O.D. Tenon (8' Long)	6-2 at 90°	
			20-20'			7-4" O.D. Tenon (10' Long)	6-3 at 90°	

**NOTES:** 1. All shaft sizes normal. 2. Base cover not included (order as option). 3. Square poles are 3" at 90°; round poles are 3" at 120°. 4. Tapped Hole is located 8" below the pole top and on the same side of pole as hand hole, unless specified otherwise. 5. Outlet is located 4" above base and on same side of pole as hand hole, unless specified otherwise. Receptacle not included, provision only. 6. Additional hand hole is located 12" below pole top and 90° from standard hand hole location, unless otherwise specified.

**ANCHORAGE DATA**

See technical information.

Pole	Anchor Bolt and Template (Inches)	Template Only	Bolt Circle (Inches)	Number of Bolts	Anchor Bolt Size (Inches)
RSA4TuN	317RB304	2143M0	6-3/4	3	3/4 x 17 x 3
RSA4MuN	317RB304	2143M0	6-3/4	3	3/4 x 17 x 3
RSA4TuN	317RB305	2143S0	7-3/4	3	3/4 x 17 x 3
RSA4MuN	317RB305	2143S0	7-3/4	3	3/4 x 17 x 3



TD613001EN  
July 2, 2019 4:33 PM

**Effective Projected Area (At Pole Top)**

Mounting Height (Feet)	Catalog Number	Wall Thickness (Inches)	Bolt Circle Diameter (Inches)	Anchor Bolt Projection (Inches)	Shaft Size (Inches)	Anchor Bolt Diameter x Length x Hook (Inches)	Net Weight	Maximum Effective Projected Area (Square Feet)				Max. Fixture Load - Includes Bracket (Pounds)
								70 mph	80 mph	90 mph	100 mph	
8	RSAT19N	0.125	6-3/4	3-1/4	4	3/4 x 17 x 3	20	19.0	11.9	9.1	7.2	100
10	RSAT19N	0.125	6-3/4	3-1/4	4	3/4 x 17 x 3	24	12.2	8.9	6.8	5.1	100
12	RSAT12N	0.125	6-3/4	3-1/4	4	3/4 x 17 x 3	27	3.4	6.7	4.8	3.6	100
12	RSAT12N	0.125	7-3/4	3-1/4	5	3/4 x 17 x 3	33	16.1	11.8	9.1	7.3	100
15	RSAT19N	0.125	6-3/4	3-1/4	4	3/4 x 17 x 3	33	6.4	4.2	2.8	1.8	100
15	RSAT19N	0.125	7-3/4	3-1/4	5	3/4 x 17 x 3	40	11.5	8.2	6.2	4.9	100
18	RSAM18N	0.188	6-3/4	3-1/4	4	3/4 x 17 x 3	54	7.2	4.8	3.1	2.1	100
18	RSAM18N	0.188	7-3/4	3-1/4	5	3/4 x 17 x 3	66	13	9.2	7.0	5.5	150
20	RSAM20N	0.188	7-3/4	3-1/4	5	3/4 x 17 x 3	73	10.3	7.1	5.3	4.1	150

**Effective Projected Area (18" Above Pole Top)**

Mounting Height (Feet)	Catalog Number	Wall Thickness (Inches)	Bolt Circle Diameter (Inches)	Anchor Bolt Projection (Inches)	Shaft Size (Inches)	Anchor Bolt Diameter x Length x Hook (Inches)	Net Weight	Maximum Effective Projected Area (Square Feet)				Max. Fixture Load - Includes Bracket (Pounds)
								70 mph	80 mph	90 mph	100 mph	
8	RSAT19N	0.125	6-3/4	3-1/4	4	3/4 x 17 x 3	20	13.6	10.1	7.7	6.1	100
10	RSAT19N	0.125	6-3/4	3-1/4	4	3/4 x 17 x 3	24	10.6	7.7	5.8	4.5	100
12	RSAT12N	0.125	6-3/4	3-1/4	4	3/4 x 17 x 3	27	3.2	5.9	4.2	3.2	100
12	RSAT12N	0.125	7-3/4	3-1/4	5	3/4 x 17 x 3	33	14.3	10.6	8.1	6.5	100
15	RSAT19N	0.125	6-3/4	3-1/4	4	3/4 x 17 x 3	33	5.6	3.7	2.4	1.6	100
15	RSAT19N	0.125	7-3/4	3-1/4	5	3/4 x 17 x 3	40	10.2	7.2	5.5	4.3	100
18	RSAM18N	0.188	6-3/4	3-1/4	4	3/4 x 17 x 3	54	3.5	4.3	2.8	1.9	100
18	RSAM18N	0.188	7-3/4	3-1/4	5	3/4 x 17 x 3	66	11.7	8.3	6.3	5.0	150
20	RSAM20N	0.188	7-3/4	3-1/4	5	3/4 x 17 x 3	73	9.4	6.5	4.9	3.7	150

**NOTES:**  
 1. Catalog number includes pole with hardware kit. Anchor bolts not included. Before installing, make sure proper anchor bolts and templates are obtained.  
 2. Tenon size or machining for rectangular arms must be specified. Hand hole position relative to drill location.  
 3. Shaft size, anchor bolts and projections may vary slightly. All dimensions nominal.  
 4. EPAs based on shaft properties with wind normal to flat. EPAs calculated using base wind velocity as indicated plus 30% gust factor.  
 5. Fixture installed vibration-damper.



Cooper Lighting Solutions  
1711 Highway 46 South  
Fayetteville, GA 30289  
97.779.680-6800  
[www.cooperlighting.com](http://www.cooperlighting.com)

Specifications and dimensions subject to change without notice.

TD613001EN  
July 2, 2019 4:33 PM



THIS DOCUMENT AND ITS CONTENTS ARE THE WORK PRODUCT AND PROPERTY OF 51EC, INC., WHICH RETAINS ALL COMMON LAW, STATUTORY AND OTHER RESERVED RIGHTS, INCLUDING THE COPYRIGHT.

**NEW DESIGN BUILD**  
**WOODMEN HILLS METRO DISTRICT**  
 9205 MERIDIAN RANCH BLVD.  
 PEYTON, CO 80831

REV	DESCRIPTION	DRAWN	CHECK	APPR	DATE

ISSUANCE:  
**ISSUED FOR PERMIT**

CLIENT:  
 HAMMERS CONSTRUCTION  
 1411 WOOLSEY HEIGHTS  
 COLORADO SPRINGS, CO 80915

ARCHITECT:  
 HAMMERS CONSTRUCTION  
 1411 WOOLSEY HEIGHTS  
 COLORADO SPRINGS, CO 80915

PROJECT NO:  
 5151-20-09

TITLE:  
**PARKING LOT LIGHTING CUT SHEETS 2 OF 2**

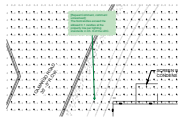
SHEET NO:  
**17 OF 18**

# Lighting Plan\_V2.pdf Markup Summary

---

[2] Woodman Hills Rec Center - Photometrics-13 OF 18 (1)

---



**Subject:** Callout

**Page Label:** [2] Woodman Hills Rec Center - Photometrics-13 OF 18

**Author:** Sophie Kiepe

**Date:** 2/1/2021 3:04:25 PM

**Status:**

**Color:** ■

**Layer:**

**Space:**

[Repeat Comment, comment unresolved]:

The footcandles exceed the allowed 0.1 candles at the property line per lighting standards in Ch. 6 of the LDC.