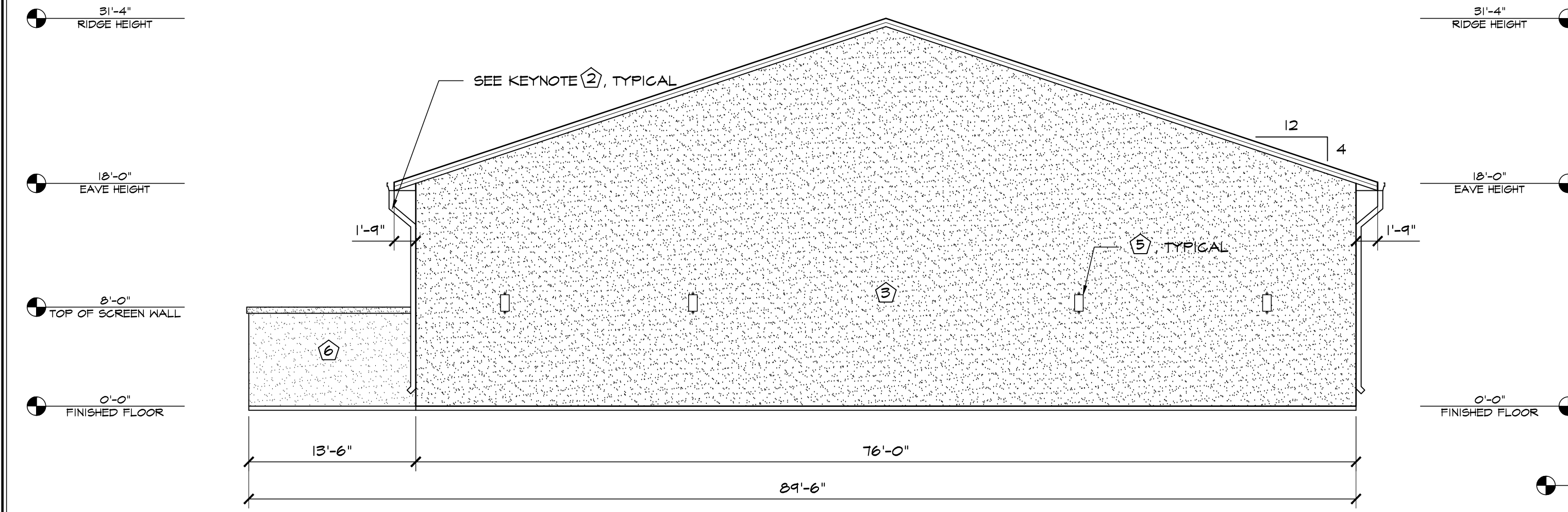
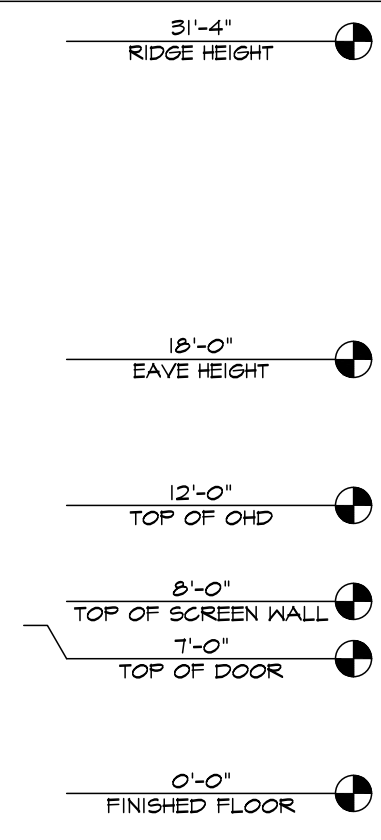
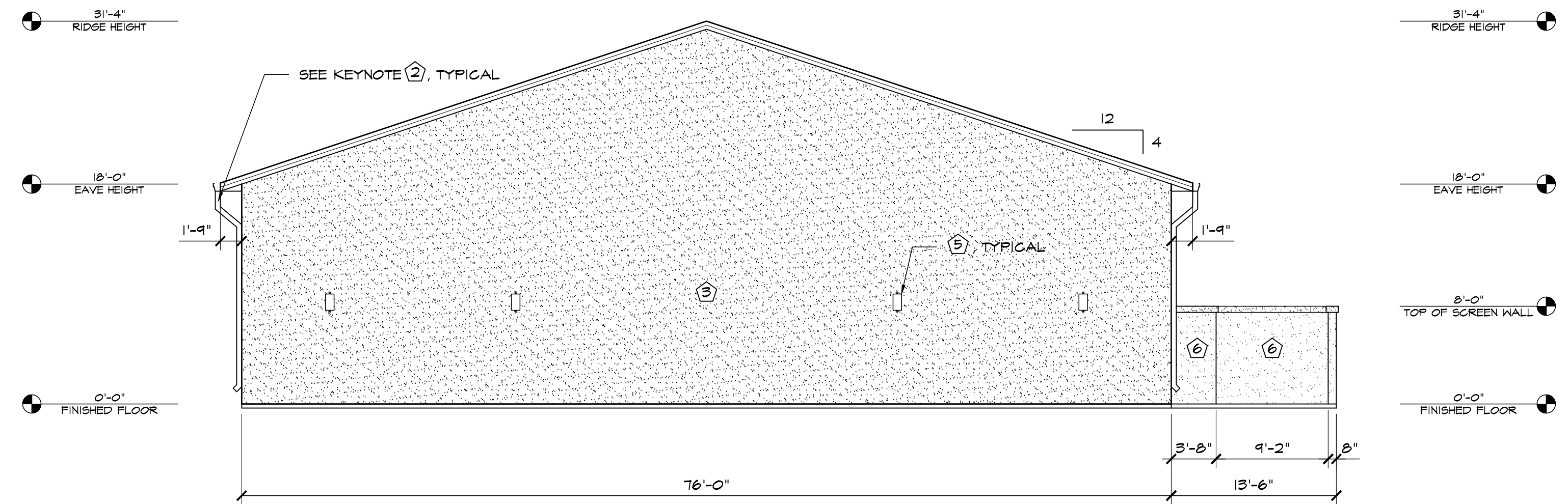
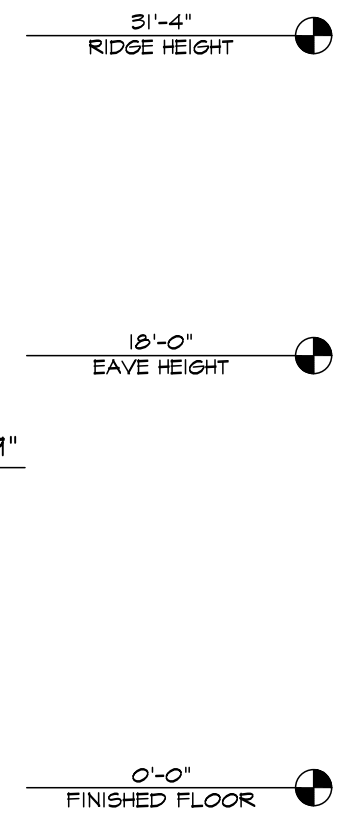


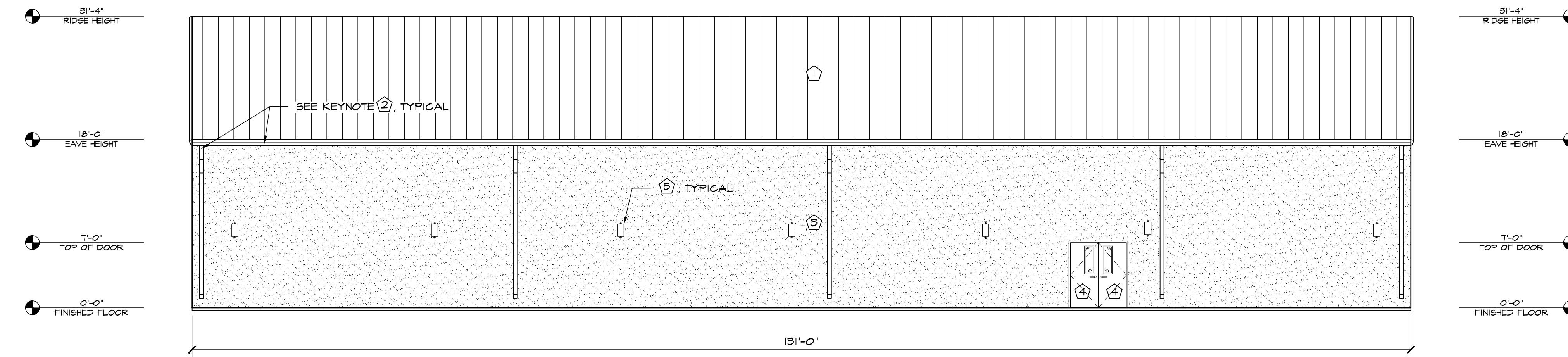
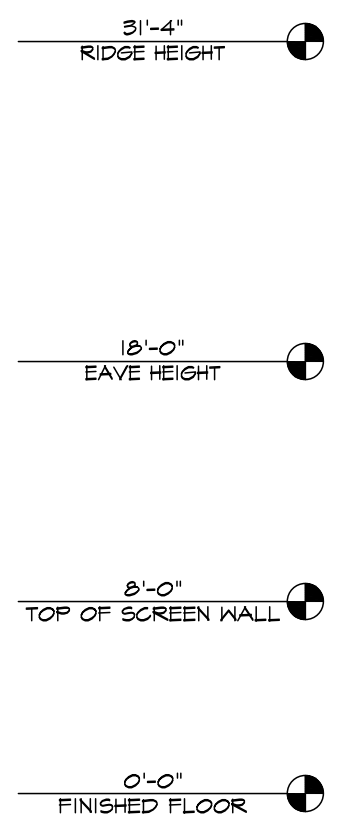
1 NORTH ELEVATION  
SCALE: 1/8"=1'-0"



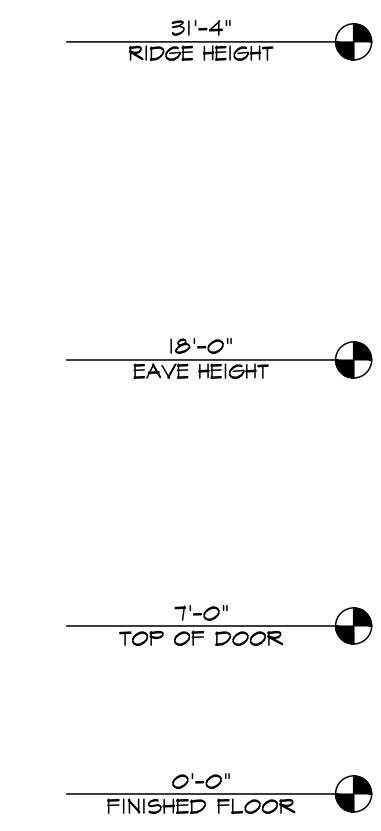
2 WEST ELEVATION  
SCALE: 1/8"=1'-0"



3 EAST ELEVATION  
SCALE: 1/8"=1'-0"



4 SOUTH ELEVATION  
SCALE: 1/8"=1'-0"



ELEVATION KEY NOTES	
1	PREFINISHED 24 GA. "55" METAL ROOF PANELS BY METAL BUILDING PROVIDER
2	PREFINISHED GUTTER & DOWNSPOUTS BY METAL BUILDING PROVIDER
3	PREFINISHED TUFF-CAST INSULATED WALL PANEL BY METAL BUILDING PROVIDER W/ CONTROL JOINTS @ 42" O.C., COLOR: TBD
4	SEE SCHEDULES ON "A" SHEETS FOR ALL DOOR INFORMATION
5	HALF CYLINDER LED LIGHT, TOP OF LIGHT @ 9'-0" A.F.F., UNLESS NOTED OTHERWISE-SEE ELECT. PLANS
6	CONCRETE WALL W/ TUFF CAST PANEL BY METAL BUILDING PROVIDER, INSIDE WILL REMAIN CONCRETE

**HAMMERS CONSTRUCTION INC.**  
COMMERCIAL GENERAL CONTRACTORS SPECIALIZING IN DESIGN/BUILD  
PRESIDENT: STEVE R. HAMMERS  
VICE PRES: DAVID J. HAMMERS  
1411 WOOLSEY HEIGHTS  
COLORADO SPRINGS, CO 80915  
(719) 570-1599 FAX (719) 570-7008  
www.hammersconstruction.com

THIS DRAWING CONTAINS MATERIAL & INFORMATION WHICH MAY NOT BE REPRODUCED WITHOUT WRITTEN CONSENT OF HAMMERS CONSTRUCTION INC. THESE DRAWINGS ARE INTENDED TO BE USED ONLY BY HAMMERS CONSTRUCTION & ITS REPRESENTATIVES. THESE DRAWINGS HAVE NOT BEEN PREPARED FOR ANY OTHER PURPOSE THAN TO INDICATE THE GENERAL FEATURES AND PLACEMENT OF THE PROPOSED PROJECT. COPYRIGHT © 2020 HAMMERS CONSTRUCTION

**WOODMEN HILLS RECREATION CENTER**  
9205 MERIDIAN RANCH BLVD.  
PEYTON, CO 80831  
EL PASO COUNTY, COLORADO

DATE: OCT 21, 2020  
DRAWN BY: J.CANTERBERRY  
PROJ. MGR: E. SMITH  
SCALE: SEE PLAN  
APPROVED BY:  
JOB NO: 1192

RESUBMITTALS:

DATE: OCT 21, 2020  
DRAWN BY: J.CANTERBERRY  
PROJ. MGR: E. SMITH  
SCALE: SEE PLAN  
APPROVED BY:  
JOB NO: 1192

RESUBMITTALS: