

ROADWAY & BUFFER
NORTH & WEST LANDSCAPE PLAN



PLANTING NOTE: PLANT MATERIAL LOCATIONS AND QUANTITIES
ALONG ROADWAYS AND INTERNAL LOTS ARE SUBJECT TO CHANGE
BASED ON FINAL SITE LAYOUT AND GRADING.

EL PASO COUNTY LANDSCAPE CODE COMPLIANCE

ROADWAY: 10' SETBACK REQUIRED/PROVIDED
EASTONVILLE ROAD: PROPOSE 1 TREE/50 LF, 5 REQUIRED/5 PROVIDED (LS)
FALCON MARKET PLACE: PROPOSE 1 TREE/50 LF, 46 REQUIRED/46 PROVIDED (LS)

WOODMEN BLVD. (EXPRESSWAY) - FRONTAGE-1,053 LF/20 = TREES REQUIRED/PROVIDED: 53/53 (LS)
MERIDIAN ROAD (EXPRESSWAY) - FRONTAGE - 1,029 LF/20 = TREES REQUIRED/PROVIDED: 51/51 (LS)

WEST BUFFER - 803 LF/15 = TREES REQUIRED/PROVIDED ALONG FENCE LINE: 53/33
WAIVER OF 20 TREES IS REQUESTED ALONG WEST BOUNDARY DUE TO GRADING AT NORTHWEST END (LB)

BUFFER AT NORTH BOUNDARY: 250' WIDE SUB-REGIONAL DETENTION POND SHOWN

ALL TREES USED ARE APPROVED DROUGHT RESISTANT FROM APPENDIX 'A': SKYLINE HONEYLOCUST, PONDEROSA PINE, COCKSPUR HAWTHORN, SPRING SNOW CRAB APPLE AND CRIMSON SPIRE OAK.

SHRUBS, ORNAMENTAL GRASS, AND PERENNIALS ARE TO BE DETERMINED

ADDITIONAL LANDSCAPE REQUIREMENTS NOT LIMITED TO PARKING, INTERNAL WILL BE PROVIDED AT THE TIME OF INDIVIDUAL SITE DEVELOPMENT PLANS.

LANDSCAPE GUIDELINES

ALL PLANT MATERIAL SHALL BE SELECTED FROM FALCON MARKETPLACE PLANT PALETTE. PLANT QUANTITIES SHALL BE PER EL PASO COUNTY CODE REQUIREMENTS

ROCK MULCHES SHALL BE: 3/4", 1.5" OR 2-4" DIAMETER ARKANSAS TAN AND/OR DENVER GRANITE. NO WOOD MULCH ALLOWED

ACCENT BOULDERS SHALL BE: ARKANSAS TAN AND/OR BROADMOOR, TWO SIZES-18" X 24", 24" X 36" DIAMETER, INSTALLED 1/3 BELOW GRADE

MOTOR VEHICLE PARKING SCREENING SHALL BE PER EL PASO COUNTY CODE

LANDSCAPE BUFFERS SHALL BE PER EL PASO COUNTY CODE

ALL OTHER GUIDELINES NOT SPECIFICALLY NOTED HERE SHALL BE PER EL PASO COUNTY CODE.

IRRIGATION SYSTEM SHALL BE PROVIDED FOR PLANT ESTABLISHMENT AND MAINTAIN PLANT HEALTH

PLANT PALETTE			
Symbol	Abbr.	Botanical Name	Common Name
EVERGREEN TREES:			
PE	Pinus	Pinus edulis	Pinyon Pine
PN	Pinus	Pinus nigra	Austrian Pine
PP	Pinus	Pinus ponderosa	Ponderosa Pine
PS	Pinus	Pinus sylvestris	Scotch Pine
DECIDUOUS TREES:			
ACT	Acer	Acer Tataricum	Tatarian Maple
AL	Acer	Acer platanoides	Norway Maple (European)
GT	Gleditsia	Gleditsia triacanthos	Skyline Honeylocust
MIM	Malus	Malus 'Indian Magic'	Indian Summer Crab
MP	Malus	Malus 'Profusion'	Profusion Crabapple
MPF	Malus	Malus 'Prairie Fire'	Prairie Fire Crabapple
MS	Malus	Malus 'Spring Snow'	Spring Snow Crabapple
PCN	Prunus	Prunus cerasifolia 'Newport'	Newport Plum
QB	Quercus	Quercus bicolor	Swamp White Oak
TA	Tilia	Tilia americana 'Boulevard'	Boulevard Linden
EVERGREEN SHRUBS:			
HJ	Juniperus	Juniperus horizontalis 'Hughes'	Hughes Juniper
JC	Juniperus	Juniperus scopulorum 'Colo-green'	Colo-green Juniper
JH	Juniperus	Juniperus horizontalis	Blue Chip Juniper
JI	Juniperus	Juniperus sabin	Buffalo Juniper
JR	Juniperus	Juniperus horizontalis 'Wiltoni'	Blue Rug Juniper
TJ	Juniperus	Juniperus sabin	Tamarix Juniper
DECIDUOUS SHRUBS:			
AA	Amelanchier	Amelanchier alnifolia	Western Serviceberry
AM	Aronia	Aronia melanocarpa elata	Black Chokeberry
BT	Berberis	Berberis thunbergii 'Atropurpurea'	Redleaf Barberry
EAC	Euconymus	Euconymus alatus 'Compactus'	Dwarf Burning Bush
GP	Ligustrum	Ligustrum x vicaryi	Golden Privet
HP	Hesperaloe	Hesperaloe parviflora	Red Yucca
PB	Prunus	Prunus besseyi	Western Sand Cherry
PC	Prunus	Prunus x cistena	Purple Leaf Plum
PFG	Potentilla	Potentilla fruticosa 'Gold Finger'	Gold Finger Potentilla
PFS	Potentilla	Potentilla fruticosa 'Sutter's Gold'	Sutter's Gold
PFV	Potentilla	Potentilla fruticosa 'McKay's White'	McKay's White
RT	Rhus	Rhus typhina	Staghorn Sumac
RTT	Rhus	Rhus trilobata	Three-leaf Sumac
SF	Spiraea	Spiraea x bumalda 'Froebelii'	Froebel Spiraea
SP	Syringa	Syringa meyeri patula	Miss Kim Lilac
SV	Spiraea	Spiraea vanhouttei	Vanhouttei Spiraea
VO	Viburnum	Viburnum opulus 'Compactum'	European Compact Viburnum
VTS	Viburnum	Viburnum trilobum 'Spring Green'	Spring Green Compact Viburnum
ORNAMENTAL GRASSES:			
CA	Calamagrostis	Calamagrostis acutiflora 'Karl Foerster'	Feather Reed Grass
PE	Schizachyrium	Schizachyrium scoparium 'Blaze'	Little Bluestem Grass 'Blaze'
PERENNIALS: EL PASO COUNTY APPROVED VARIETIES			

PLANT SCHEDULE AS SHOWN				
Symbol	Abbr.	Quant.	Botanical Name	Common Name
EVERGREEN TREES:				
	PP	36	Pinus ponderosa	Ponderosa Pine
	PS	10	Pinus sylvestris	Scotch Pine
DECIDUOUS TREES:				
	QTSB	61	Gleditsia triacanthos 'Sunburst'	Sunburst Honeylocust
	CH	32	Crataegus crus-galli inermis 'Hawthorn'	Cockspur Hawthorn
	MS	8	Malus 'Spring Snow'	Spring Snow Crabapple
	QAC	31	Quercus alba Q. robur 'Crimschmidt'	Crimson Spire Oak
PERENNIALS: EL PASO COUNTY APPROVED VARIETIES				

DOCUMENT NOTE

IRRESPECTIVE OF ANY OTHER TERM IN THIS DOCUMENT, LANDSCAPE ARCHITECT SHALL NOT CONTROL, OR BE RESPONSIBLE FOR CONSTRUCTION MEANS, METHODS, TECHNIQUES, SCHEDULES, SEQUENCES OR PROCEDURES, OR FOR CONSTRUCTION SAFETY OR ANY OTHER RELATED PROGRAMS, OR FOR ANOTHER PARTIES' ERRORS OR OMISSIONS OR FOR ANOTHER PARTIES' FAILURE TO COMPLETE THEIR WORK OR SERVICES IN ACCORDANCE WITH LANDSCAPE ARCHITECT'S DOCUMENTS.

HIGHER GROUND DESIGNS, INC.
LANDSCAPE ARCHITECTURE, PLANNING & IRRIGATION DESIGN

5350 NORTH ACADEMY BLVD., STE. 207
COLORADO SPRINGS, CO 80918
Phone 719-477-1648
Fax 719-588-1122

FALCON MARKETPLACE
FILING NO. 1
FALCON, CO - EL PASO COUNTY, CO

THESE DRAWINGS ARE THE PROPERTY OF HIGHER GROUND DESIGNS, INC. AND SHALL NOT BE USED FOR ANY OTHER PROJECT WITHOUT THE WRITTEN PERMISSION BY HIGHER GROUND DESIGNS, INC. THESE DRAWINGS ARE FOR APPROVAL ONLY.

PREPARED FOR:
DREXEL, BARRELL & CO.

NOT FOR CONSTRUCTION

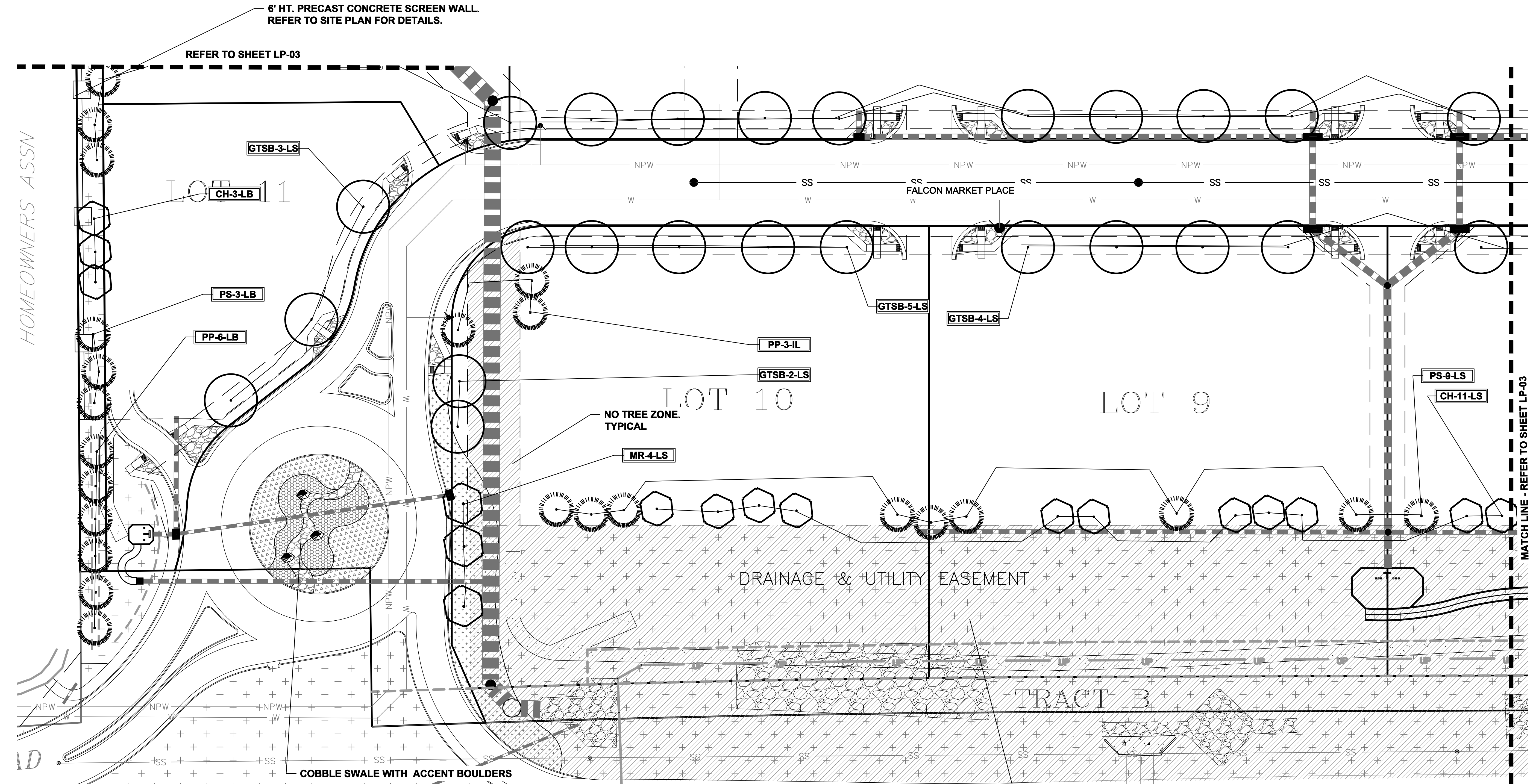
FOR APPROVAL ONLY

JOB NUMBER
688-17

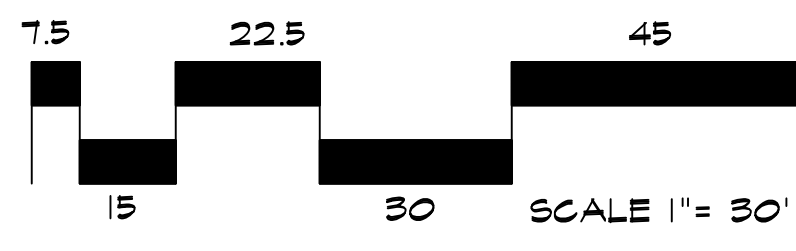
REVISIONS	DATE	PER	COMMENTS
7-2-18		PER	COMMENTS
8-3-18		PER	COMMENTS
9-6-18		PER	COMMENTS
7-19-19		PER	COMMENTS
08-22-19		PER	COMMENTS
11-7-19		PER	COMMENTS

ORIGINAL DATE 5-22-17
DRAWN BY: JIM
DESCRIPTION:
ROADWAY & BUFFER
NORTH/WEST LANDSCAPE
SHEET NO.
LP-01

HOMEOWNERS ASSN



LANDSCAPE PLAN - AREA 'A'



NO TREE ZONE.
TYPICAL

DOCUMENT NOTE
IRRESPECTIVE OF ANY OTHER TERM IN THIS DOCUMENT, LANDSCAPE ARCHITECT SHALL NOT CONTROL OR BE RESPONSIBLE FOR CONSTRUCTION MEANS, METHODS, TECHNIQUES, SCHEDULES, SEQUENCES OR PROCEDURES, OR FOR CONSTRUCTION SAFETY OR ANY OTHER RELATED PROGRAMS, OR FOR ANOTHER PARTIES' ERRORS OR OMISSIONS OR FOR ANOTHER PARTIES' FAILURE TO COMPLETE THEIR WORK OR SERVICES IN ACCORDANCE WITH LANDSCAPE ARCHITECT'S DOCUMENTS.

GROUND COVER LEGEND	
SYMBOL	DESCRIPTION
	Arkansas Tan Rock: 1.5" Diameter (with weed barrier)
	Arkansas Tan Cobble: 2-4" Diameter (with weed barrier)
	Non-Irrigated Native Seed

NOT FOR CONSTRUCTION

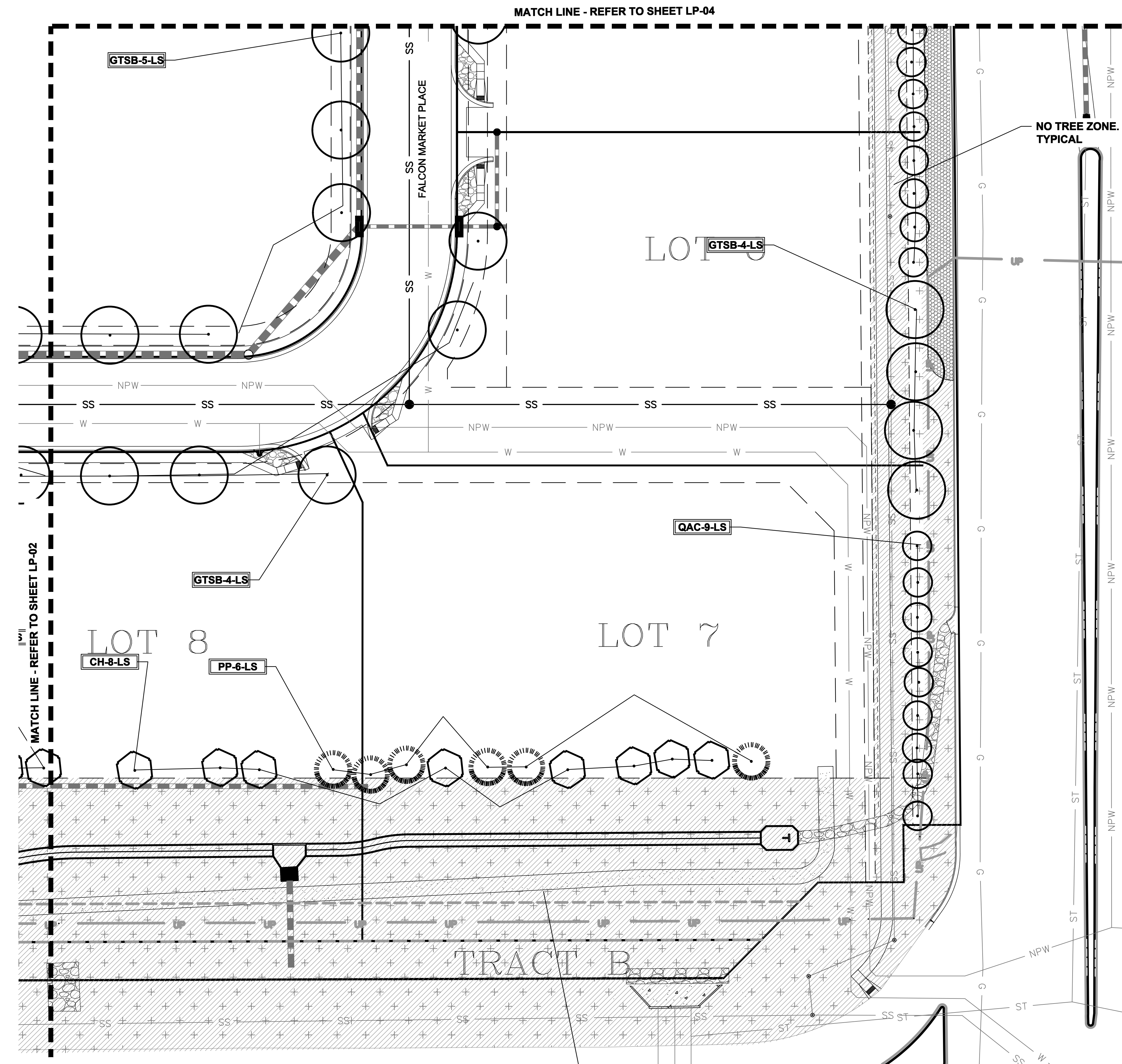
JOB NUMBER		688-17
REVISIONS		
7-2-18	PER COMMENTS	
8-3-18	PER COMMENTS	
9-6-18	PER COMMENTS	
7-19-19	PER COMMENTS	
08-22-19	PER COMMENTS	
11-7-19	PER COMMENTS	
ORIGINAL DATE		5-22-17
DRAWN BY:		JM
DESCRIPTION:		AREA 'A' LANDSCAPE PLAN
SHEET NO.		LP-02

FOR APPROVAL ONLY

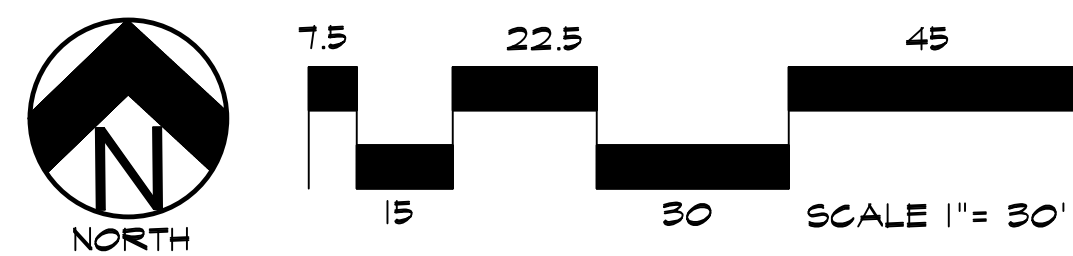
FALCON MARKETPLACE
FILING NO. 1
FALCON, CO - EL PASO COUNTY, CO
PREPARED FOR:
DREXEL, BARRELL & CO.
THESE DRAWINGS ARE THE PROPERTY OF HIGHER GROUND DESIGNS, INC. AND SHALL NOT BE USED FOR ANY OTHER PROJECT WITHOUT THE WRITTEN PERMISSION BY HIGHER GROUND DESIGNS, INC. THESE DRAWINGS ARE FOR APPROVAL ONLY.



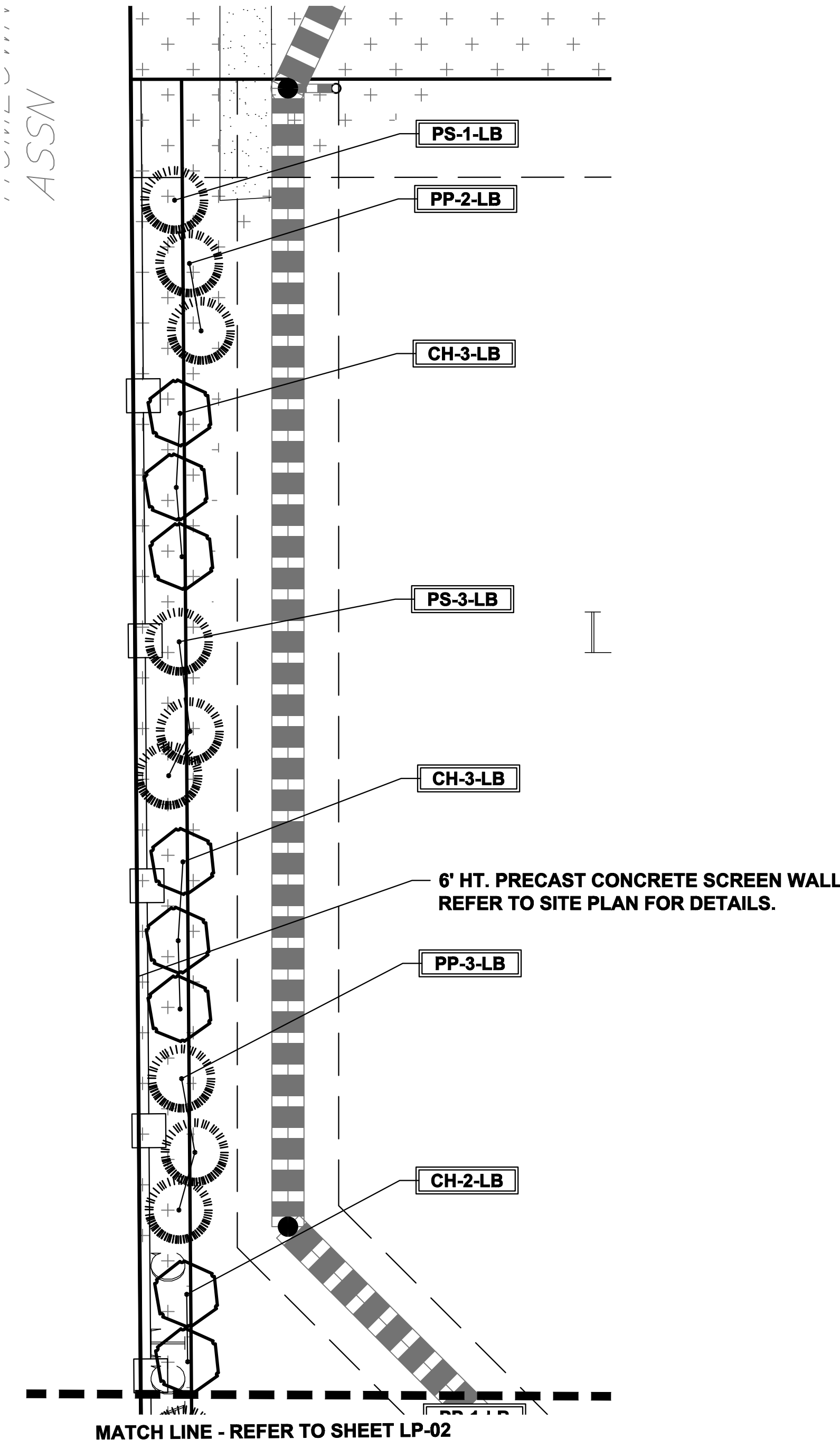
HIGHER GROUND DESIGNS, INC.
LANDSCAPE ARCHITECTURE, PLANNING & IRRIGATION DESIGN
5350 NORTH ACADEMY BLVD. STE. 207
COLORADO SPRINGS, CO 80918
Phone 719-477-1646
Fax 719-586-1122



LANDSCAPE PLAN - AREA 'B'



GROUND COVER LEGEND	
SYMBOL	DESCRIPTION
	Arkansas Tan Rock: 1.5" Diameter (with weed barrier)
	Arkansas Tan Cobble: 2-4" Diameter (with weed barrier)
	Non-Irrigated Native Seed



LANDSCAPE PLAN - AREA 'E'

DOCUMENT NOTE
IRRESPECTIVE OF ANY OTHER TERM IN THIS DOCUMENT, LANDSCAPE ARCHITECT SHALL NOT CONTROL OR BE RESPONSIBLE FOR CONSTRUCTION MEANS, METHODS, TECHNIQUES, SCHEDULES, SEQUENCES OR PROCEDURES, OR FOR CONSTRUCTION SAFETY OR ANY OTHER RELATED PROGRAMS, OR FOR ANOTHER PARTIES' ERRORS OR OMISSIONS OR FOR ANOTHER PARTIES' FAILURE TO COMPLETE THEIR WORK OR SERVICES IN ACCORDANCE WITH LANDSCAPE ARCHITECT'S DOCUMENTS.

NOT FOR CONSTRUCTION	JOB NUMBER	688-17
	REVISIONS	
	7-2-18	PER COMMENTS
	8-3-18	PER COMMENTS
	9-6-18	PER COMMENTS
	7-19-19	PER COMMENTS
	8-22-19	PER COMMENTS
	11-7-19	PER COMMENTS
	ORIGINAL DATE	5-22-17
	DRAWN BY:	JM
	DESCRIPTION:	AREA 'B' & 'E' LANDSCAPE PLAN
	SHEET NO.	LP-03

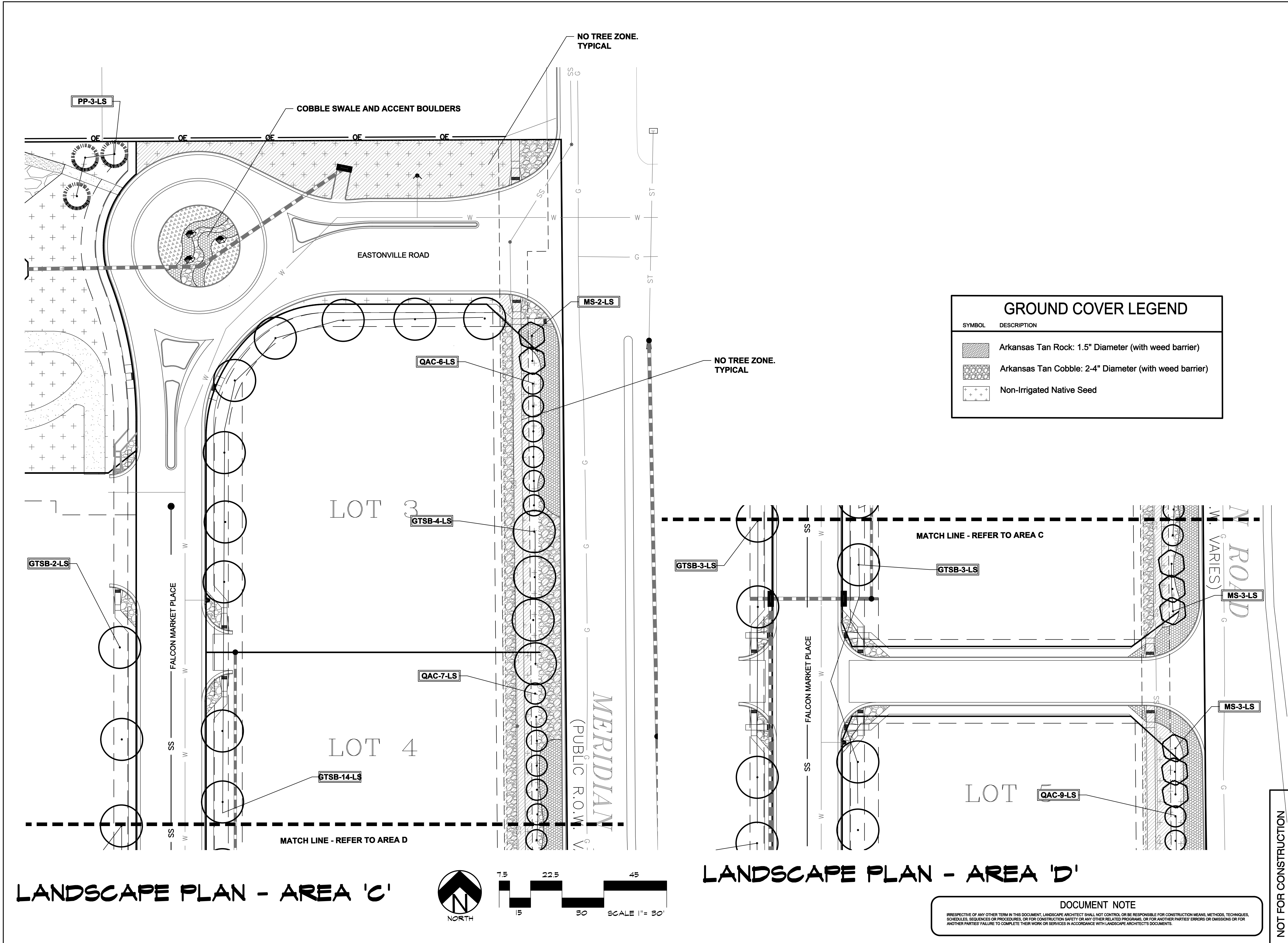
FALCON MARKETPLACE

FILING NO. 1
FALCON, CO - EL PASO COUNTY, CO

PREPARED FOR:
DREXEL, BARRELL & CO.



HIGHER GROUND DESIGNS, INC.
LANDSCAPE ARCHITECTURE, PLANNING & IRRIGATION DESIGN
5350 NORTH ACADEMY BLVD., STE. 207
COLORADO SPRINGS, CO 80918
Phone 719-477-1646
Fax 719-586-1122



GROUND COVER LEGEND	
SYMBOL	DESCRIPTION
	Arkansas Tan Rock: 1.5" Diameter (with weed barrier)
	Arkansas Tan Cobble: 2-4" Diameter (with weed barrier)
	Non-Irrigated Native Seed

HIGHER GROUND DESIGNS, INC.
LANDSCAPE ARCHITECTURE, PLANNING & IRRIGATION DESIGN
5350 NORTH ACADEMY BLVD., STE. 207
COLORADO SPRINGS, CO 80918
Phone 719-477-1646
Fax 719-586-1122

HIGHER GROUND DESIGNS

FALCON MARKETPLACE
FILING NO. 1
FALCON, CO - EL PASO COUNTY, CO

PREPARED FOR:
DREXEL, BARRELL & CO.

THESE DRAWINGS ARE THE PROPERTY OF HIGHER GROUND DESIGNS, INC. AND SHALL NOT BE USED FOR ANY OTHER PROJECT WITHOUT THE WRITTEN PERMISSION BY HIGHER GROUND DESIGNS, INC. THESE DRAWINGS ARE FOR APPROVAL ONLY.

NOT FOR CONSTRUCTION

JOB NUMBER
688-17

REVISIONS
7-2-18 PER COMMENTS
8-3-18 PER COMMENTS
9-6-18 PER COMMENTS
7-19-19 PER COMMENTS
08-22-19 PER COMMENTS
11-7-19 PER COMMENTS
ORIGINAL DATE
5-22-17
DRAWN BY: JM
DESCRIPTION:
AREA 'C' & 'D'
LANDSCAPE PLAN
SHEET NO.
LP-04

DOCUMENT NOTE
IRRESPECTIVE OF ANY OTHER TERM IN THIS DOCUMENT, LANDSCAPE ARCHITECT SHALL NOT CONTROL OR BE RESPONSIBLE FOR CONSTRUCTION MEANS, METHODS, TECHNIQUES, SCHEDULES, SEQUENCES OR PROCEDURES, OR FOR CONSTRUCTION SAFETY OR ANY OTHER RELATED PROGRAMS, OR FOR ANOTHER PARTIES' ERRORS OR OMISSIONS OR FOR ANOTHER PARTIES' FAILURE TO COMPLETE THEIR WORK OR SERVICES IN ACCORDANCE WITH LANDSCAPE ARCHITECT'S DOCUMENTS.