

Kari Parsons

From: Matt Arcidiacono
Sent: Wednesday, August 29, 2018 8:16 AM
To: 'Lon Brouse'
Subject: BMP's along North Gate Rd

Lon,

According to this construction drawing the BMP's you need maintain are: silt fence at top of slope – which is not needed anymore due to the impervious surfaces, inlet protection – which may still be needed (couldn't hurt), and curb socks – which have not been installed (note this on the SWMP site map). Academy Gateway's plans show that they need to maintain the perimeter silt fence along North Gate Rd. What I can do is when/if Don calls me again, I will meet you both on site and explain this via approved construction drawings. Please correct me if I am wrong anywhere.

Thanks,

Matt Arcidiacono
El Paso County, Colorado
Engineering Inspector II
(719) 425-7088

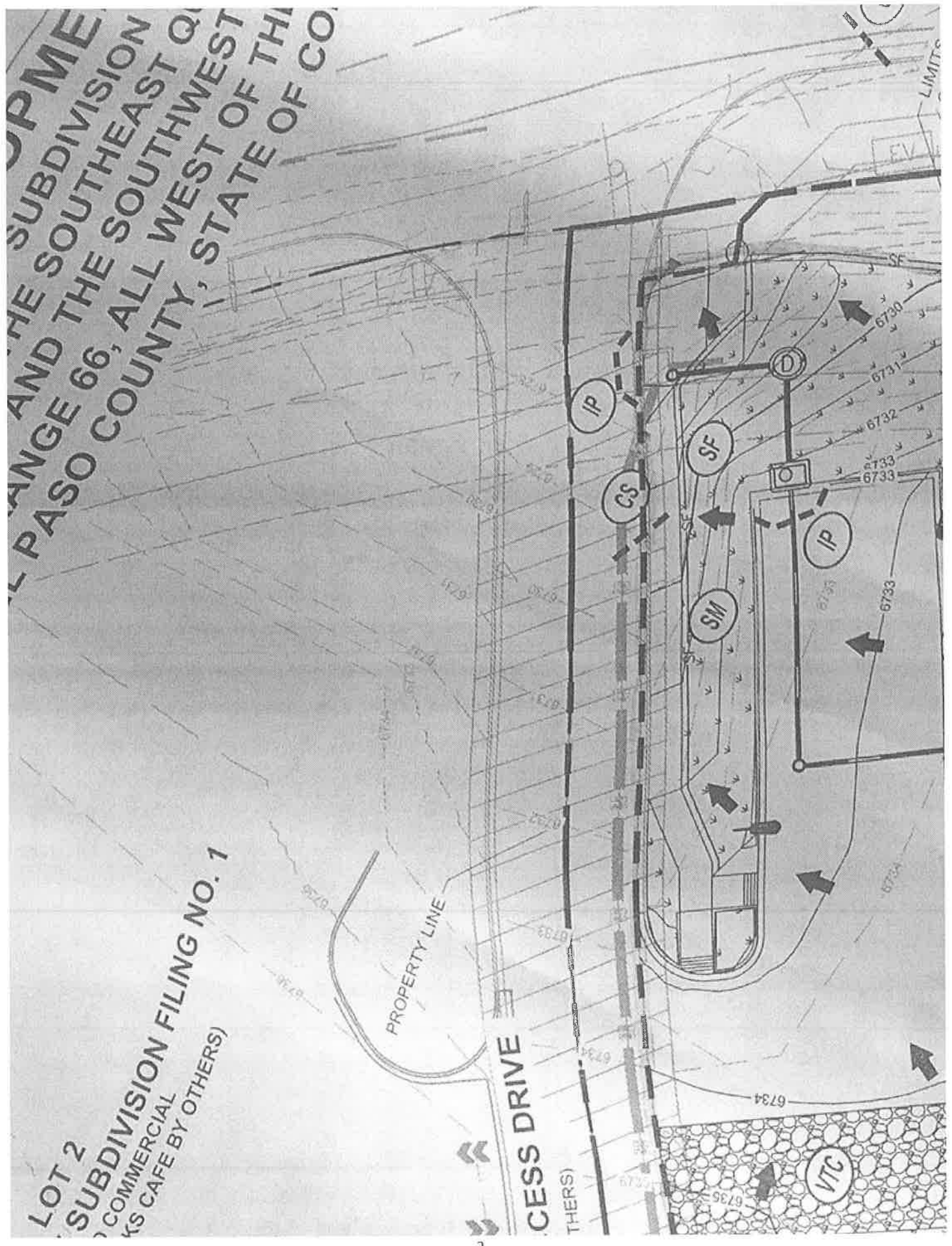
From: Lon Brouse [<mailto:lon.brouse@ccbuidersinc.com>]
Sent: Tuesday, August 28, 2018 3:49 PM
To: Matt Arcidiacono
Subject: Re: Stormwater Inspection

CAUTION: This email originated from outside the El Paso County technology network. Do not click links or open attachments unless you recognize the sender and know the content is safe. Please call IT Customer Service at 520-6355 if you are unsure of the integrity of this message.

Matt, here is our approved storm water plan. I am responsible for nothing below the crest of the hill. The 3 inlets I have been taking care of as shown on plans. Thanks

OPME
SUBDIVISION
AND THE SOUTHWEST QU
ANGE 66, ALL WEST OF TH
L PASO COUNTY, STATE OF CO

LOT 2
SUBDIVISION FILING NO. 1
COMMERCIAL
(AS CALLED BY OTHERS)



Lon Brouse
Christofferson Commercial Builders
7193677439
lon.brouse@ccbbuildersinc.com

On Aug 21, 2018, at 7:43 AM, Matt Arcidiacono <MattArcidiacono@elpasoco.com> wrote:

Hi,

Attached is the storm-water inspection I completed yesterday for the 7-Eleven at Academy Gateway. Corrective actions were being implemented when I was on site. The rest of 7-Eleven was maintained.

Thanks,

Matt Arcidiacono
El Paso County, Colorado
Engineering Inspector II
(719) 425-7088

<7-Eleven at Academy Gateway Follow up 8-20-18.docx>

Kari Parsons

From: Matt Arcidiacono
Sent: Tuesday, August 21, 2018 7:43 AM
To: lon.brouse@ccbbuildersinc.com
Cc: 'Donald Smith'
Subject: Stormwater Inspection
Attachments: 7-Eleven at Academy Gateway Follow up 8-20-18.docx

Hi,

Attached is the storm-water inspection I completed yesterday for the 7-Eleven at Academy Gateway. Corrective actions were being implemented when I was on site. The rest of 7-Eleven was maintained.

Thanks,

Matt Arcidiacono
El Paso County, Colorado
Engineering Inspector II
(719) 425-7088