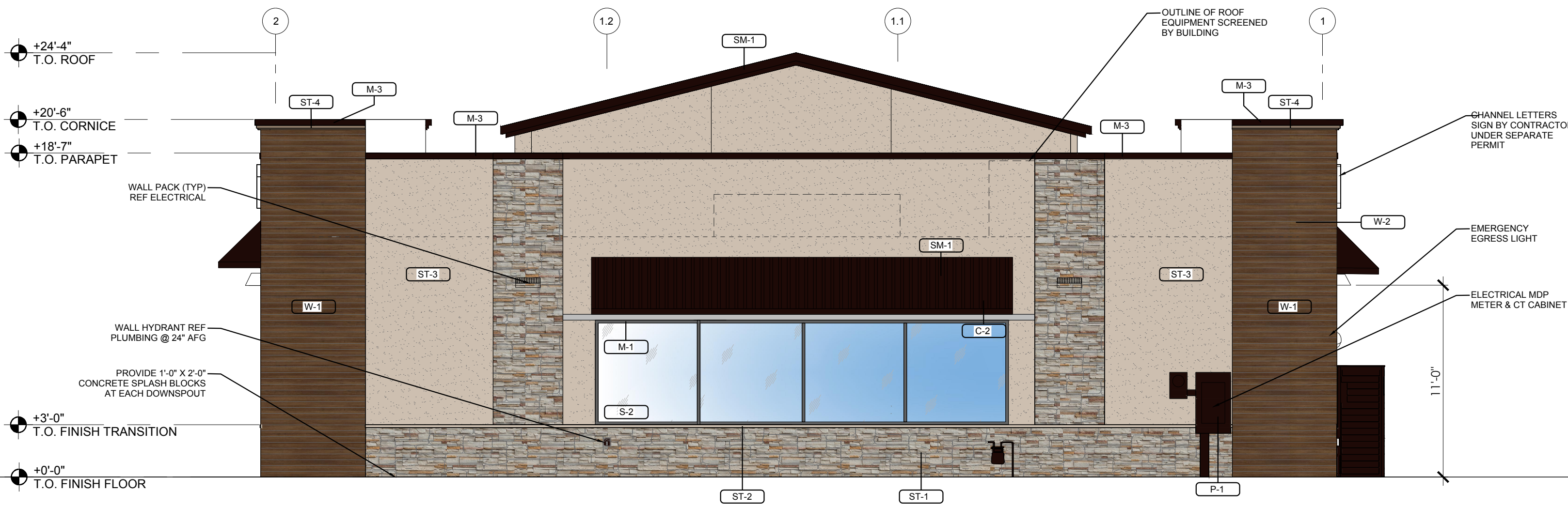


© 2015, ALL RIGHTS RESERVED.

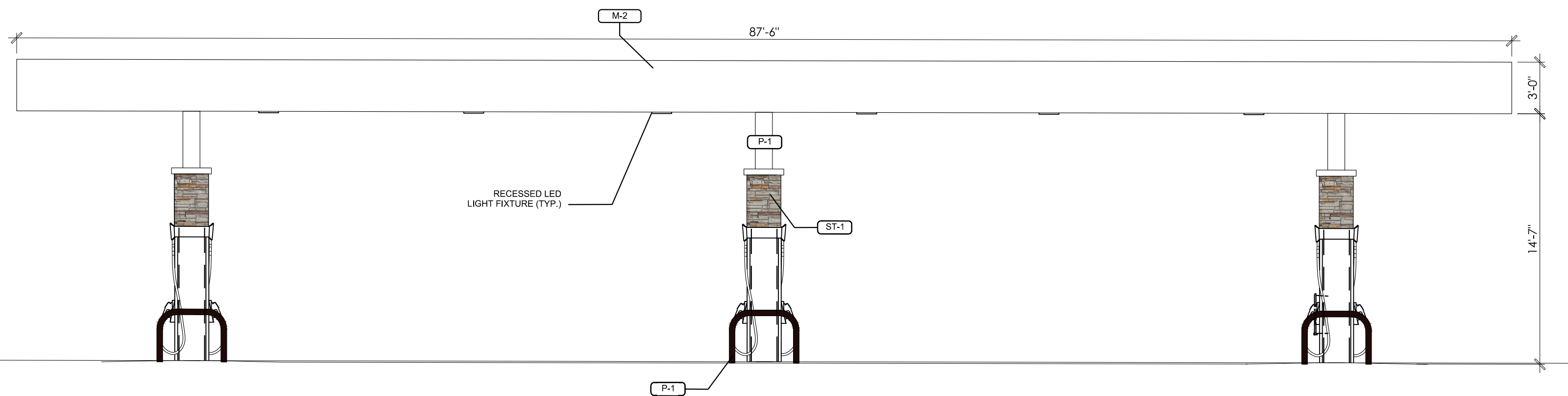
1/31/2018 2:38 PM L:\7-ELEVEN\2017\7-003 1030079 STRUTHERS EL PASO CO\01 PRELIMINARY\FLOORPLAN & ELEVATIONS\10-20-2017 (6049 LEFT)\BUILDING & CANOPY ELEVATIONS.DWG



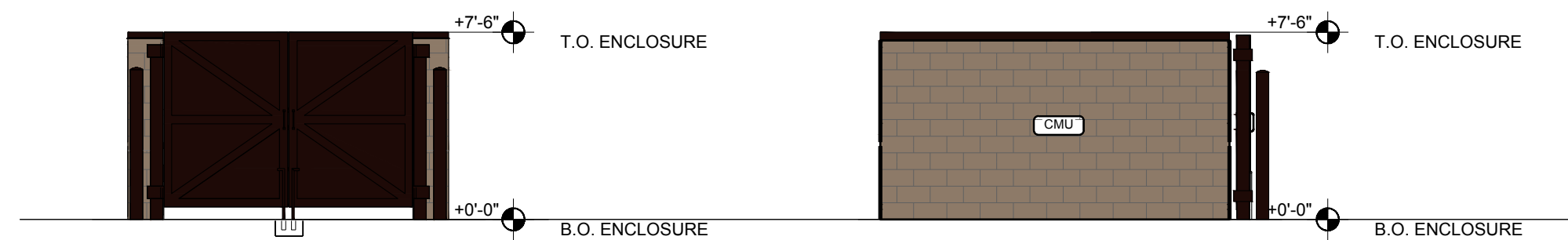
1 **FRONT ELEVATION**
SCALE 3/16" = 1'-0"



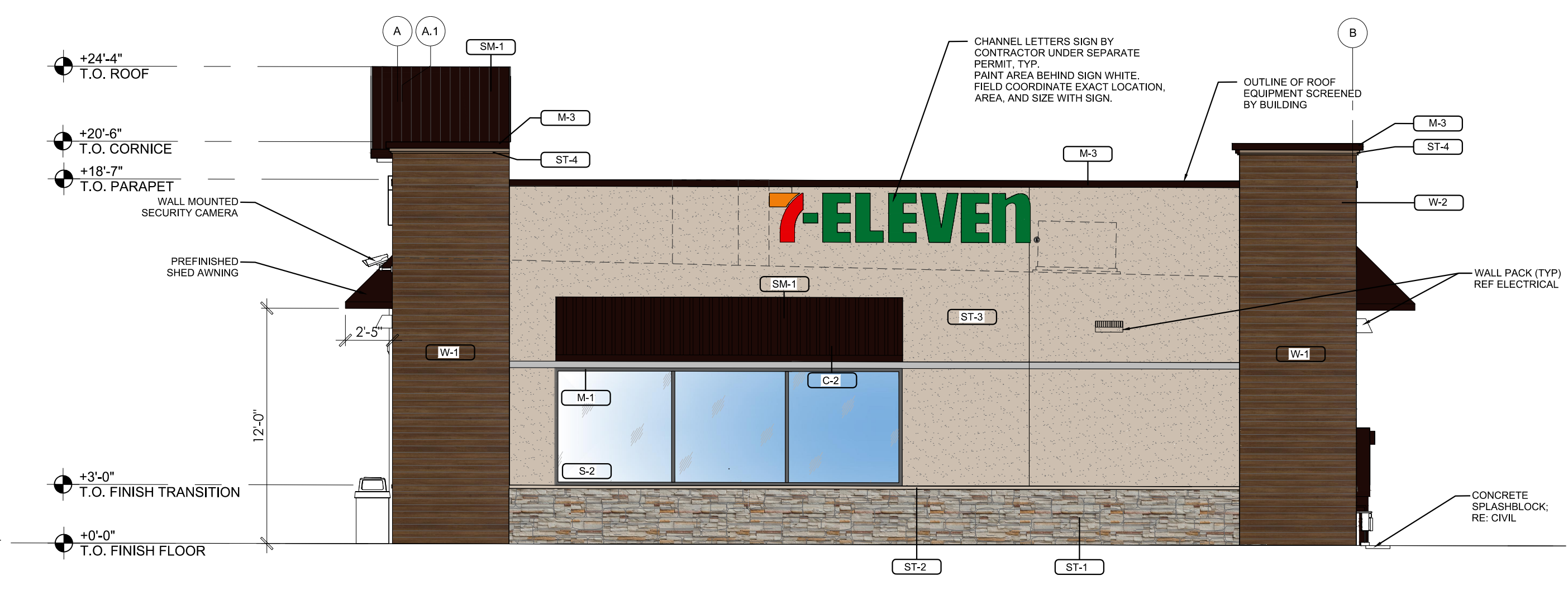
3 **BACK ELEVATION**
SCALE 3/16" = 1'-0"



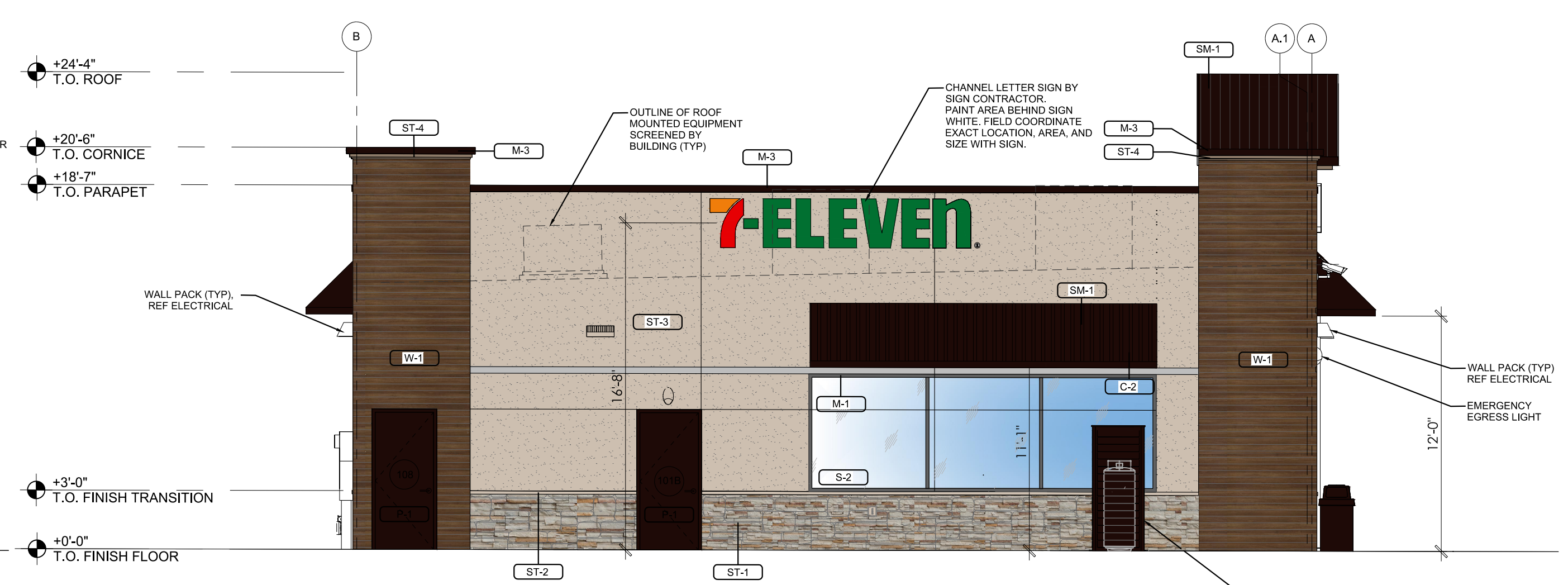
5 **FUEL CANOPY ELEVATION - SIDE VIEW**
SCALE 3/16" = 1'-0"



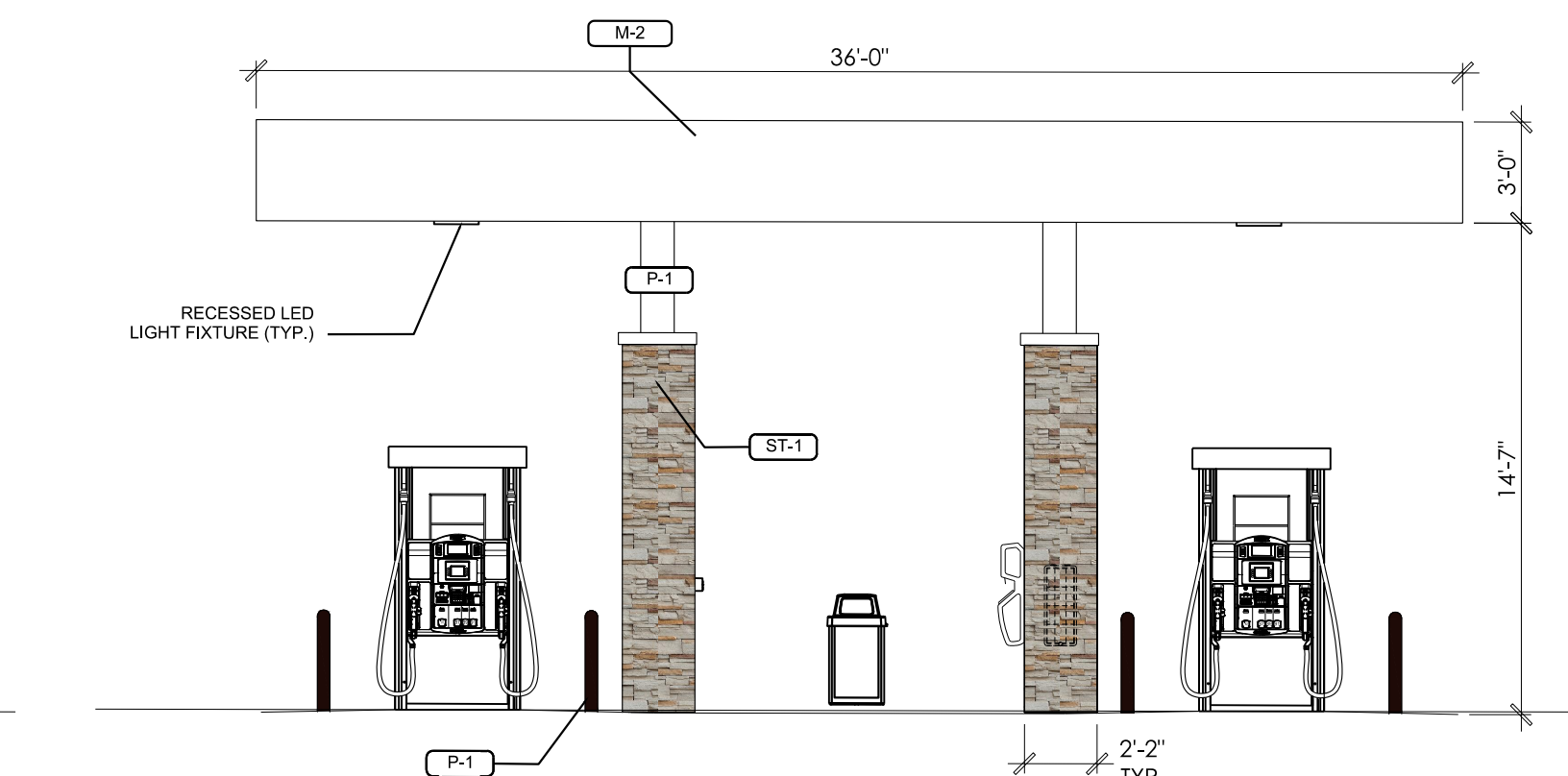
7 **DUMPSTER ENCLOSURE ELEVATIONS**
SCALE 3/16" = 1'-0"



2 **RIGHT ELEVATION**
SCALE 3/16" = 1'-0"



4 **LEFT ELEVATION**
SCALE 3/16" = 1'-0"



6 **FUEL CANOPY ELEVATION - END VIEW**
SCALE 3/16" = 1'-0"

All rooftop mechanical equipment and vents greater than eight inches in diameter must be screened. Screening may be done either with an extended parapet wall or a free-standing screen wall. Screens shall be at least as high as the equipment they hide. If equipment is visible because screens don't meet this minimum height requirement, the Director of Planning may require construction modifications prior to the issuance of a permanent Certificate of Occupancy.

COUNTY PROJECT NUMBER PPR-17-XXX

EXTERIOR MATERIALS SCHEDULE (NOT ALL MATERIALS IN SCHEDULE ARE USED)		
NO.	MATERIAL	MANUF.-COLOR
C-1	CAST-IN-PLACE CONCRETE	TBD
C-2	PRE-FINISHED SHED CANOPY	SHED CANOPY - BRONZE STANDING SEAM METAL ROOF W/ POWDER-COATED METAL SUPPORTS
CMU	MASONRY FOR TRASH ENCLOSURE	DUST BLOCK OR = COLOR TO MATCH BUILDING
M-1	PRE-FINISHED METAL - GRAVEL STOP, AWNINGS, DOWNSPOUTS, ETC.	TO MATCH SHERWIN WILLIAMS SEAL SKIN SW 7675
M-2	PRE-FINISHED METAL - FUEL CANOPY	TO MATCH DRYVIT #133 - DIRFTWOOD
M-3	PRE-FINISHED METAL COPING	TO MATCH DRYVIT #452 - STORMY NIGHT
P-1	PAINT	SHERWIN WILLIAMS 'SEAL SKIN' - SW 7675 - EXTERIOR HM DOORS, LIGHT POLES, BOLLARDS, TRASH ENCLOSURE GUARD, DOWNSPOUT, BIKE RACKS/LOCKERS/
S-1	ALUMINUM STOREFRONT GLAZING	KAWNEER - 451T VG - DARK BRONZE
S-2	ALUMINUM STOREFRONT GLAZING	KAWNEER
SM-1	METAL STANDING SEAM	BERRIDGE PREWEATHERED GALVALUME - DARK BRONZE
ST-1	STONE VENEER	EL DORADO MOUNTAIN LEDGESTONE VENEER
ST-2	STONE SILL - WAINSCOTT	EL DORADO MOUNTAIN LEDGESTONE WAINSCOTT SILL
ST-3	STUCCO	DRYVIT - #133 DRIFTWOOD
ST-4	STUCCO	DRYVIT - #452 STORMY NIGHT
W-1	WOOD PANEL SYSTEM	NICHIHA - "TOBACCO" - OR SIMILAR



CALL UTILITY NOTIFICATION
CENTER OF COLORADO
1-800-922-1987 or 811
CALL 3-BUSINESS DAYS (NOT INCLUDING INITIAL DAY OF CONTACT) IN ADVANCE BEFORE YOU DIG, GRADE, OR EXCAVATE FOR THE MARKING OF UNDERGROUND MEMBER UTILITIES.

DATE	11/02/17	12/05/17	01/18/18
BY			
REVISION			
1	CITY SUBMITTAL		
2	CITY SUBMITTAL		
3	CITY SUBMITTAL		

**PRELIMINARY
NOT FOR
CONSTRUCTION**

**THE
DIMENSION
GROUP**
5600 S. QUEBEC ST., STE 310B
GREENWOOD VILLAGE, CO 80111
O: 720.536.5188
dimensiongrp.com

7-ELEVEN

LOT 1 ACADEMY GATEWAY SUBDIVISION FILING NO. 1

BUILDING ELEVATIONS

PROJECT NO: C7-003
DESIGNED BY: AEG
DRAWN BY: AEG
DATE: 12/04/2017

C5.0
SHEET 10 OF 16