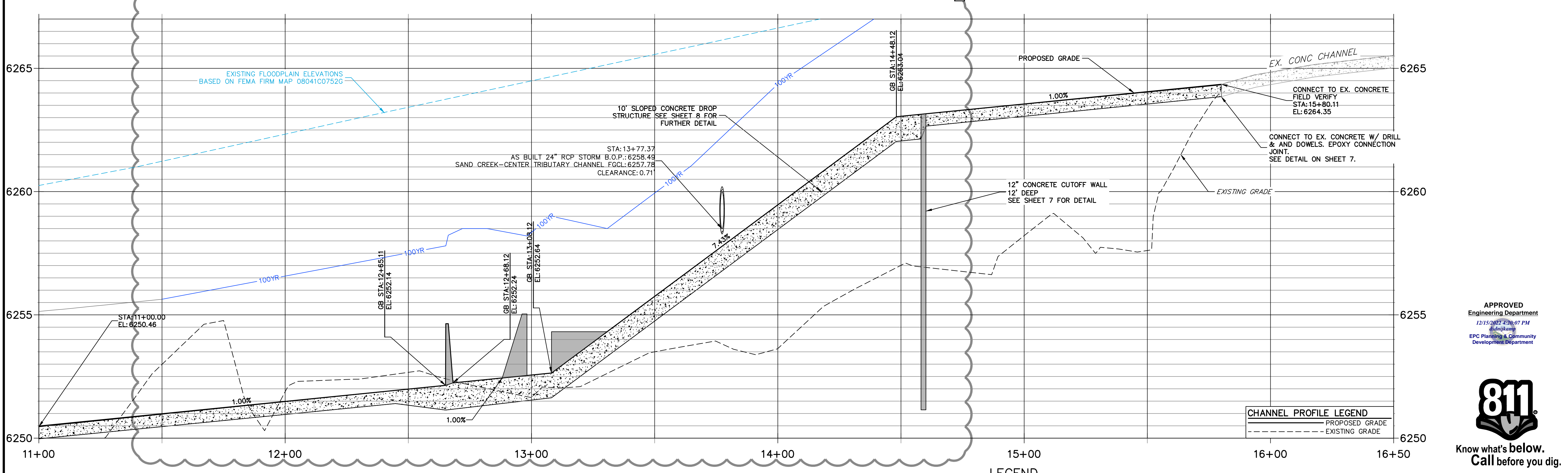
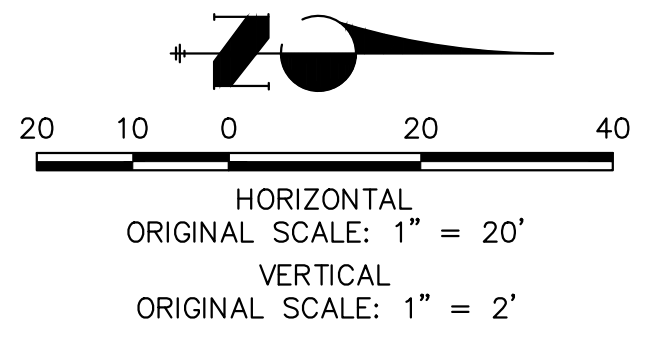


**SAND CREEK-CENTER TRIBUTARY CHANNEL PROFILE (4)
STA 11+00.00 TO 16+50.00**



FENCING NOTES

- FENCING SHALL BE PROVIDED ALONG THE EXTENTS OF THE CHANNEL, EXCEPT FOR AT LOCATIONS OF MAINTENANCE ACCESS.
- FENCING SHALL CONFORM TO THE LANDSCAPING PLANS FOR SOLACE OF COLORADO SPRINGS SP-20-001, BY NES.



LEGEND


- PROPOSED MAJOR CONTOURS (solid line with elevation 6100)
- EXISTING MAJOR CONTOUR (dashed line with elevation 6100)
- LIMITS OF GRADING (dotted line)
- 6" THICK CONCRETE CHANNEL LINING (stippled pattern)
- 12" THICK CONCRETE CHANNEL LINING (cross-hatched pattern)

CHANNEL PROFILE LEGEND

—	PROPOSED GRADE
- - -	EXISTING GRADE

ENGINEER'S STATEMENT

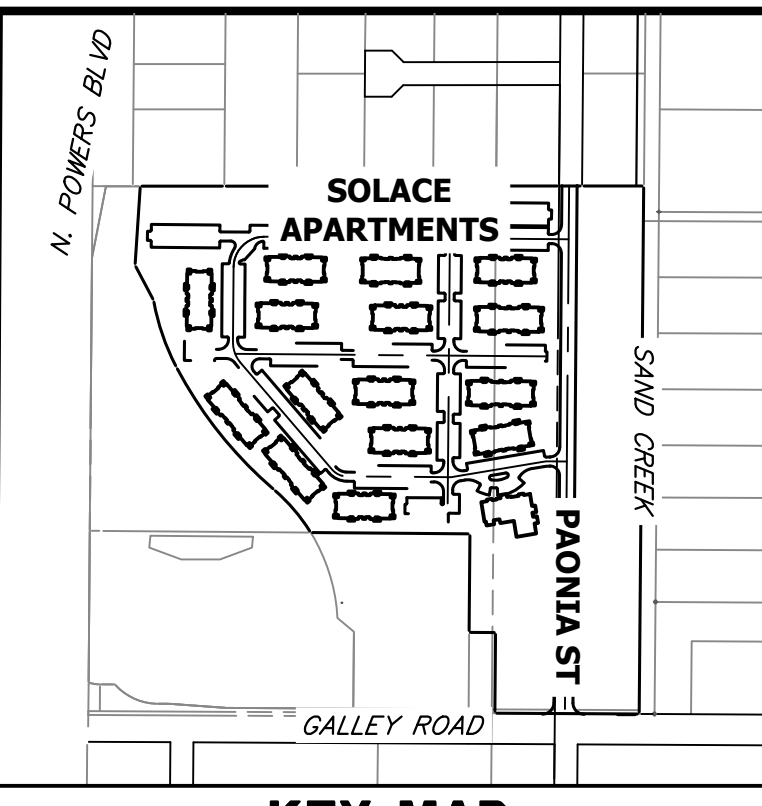
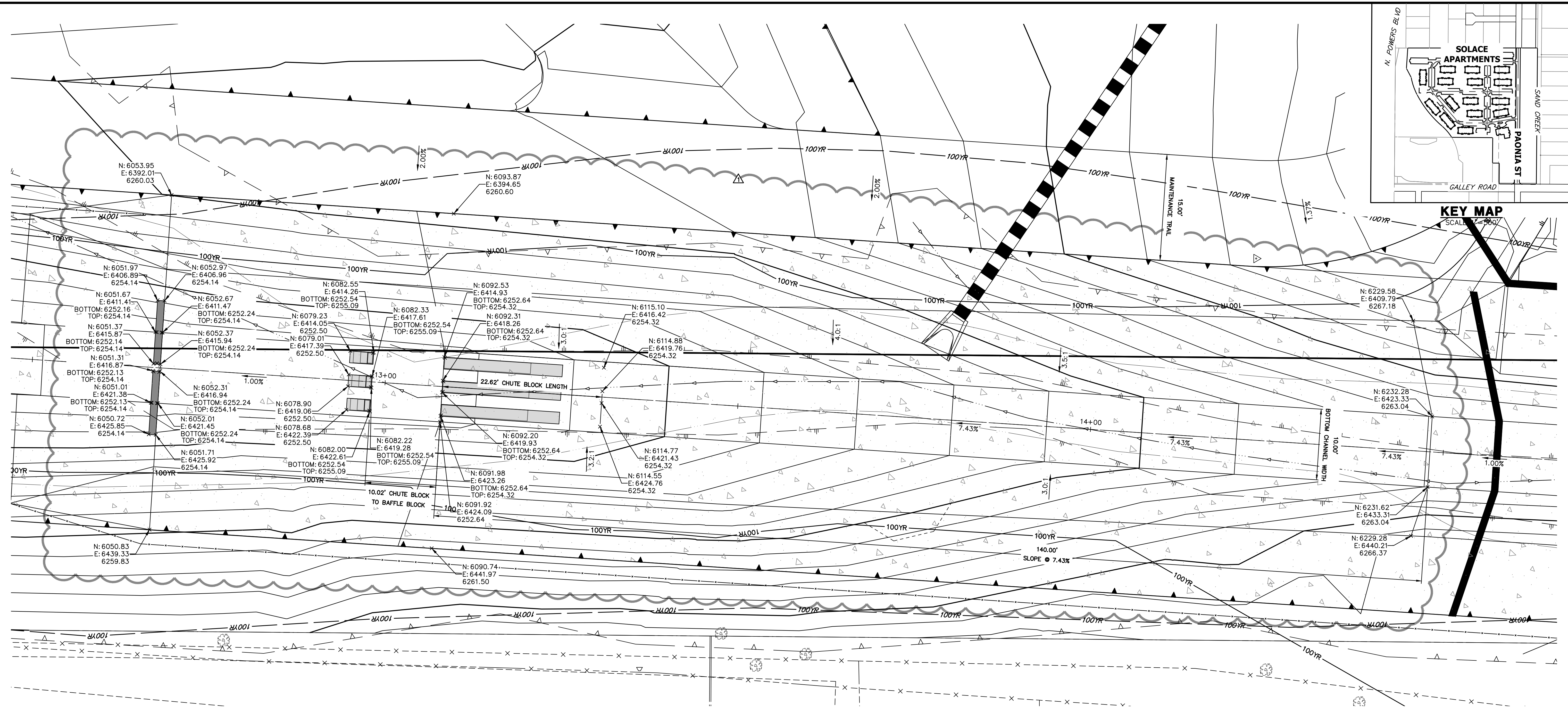
PREPARED UNDER MY DIRECT SUPERVISION AND ON BEHALF OF JR ENGINEERING


 MIKE A. BRAMLETT, P.E.
 COLORADO P.E. 32314
 FOR AND ON BEHALF OF JR ENGINEERING

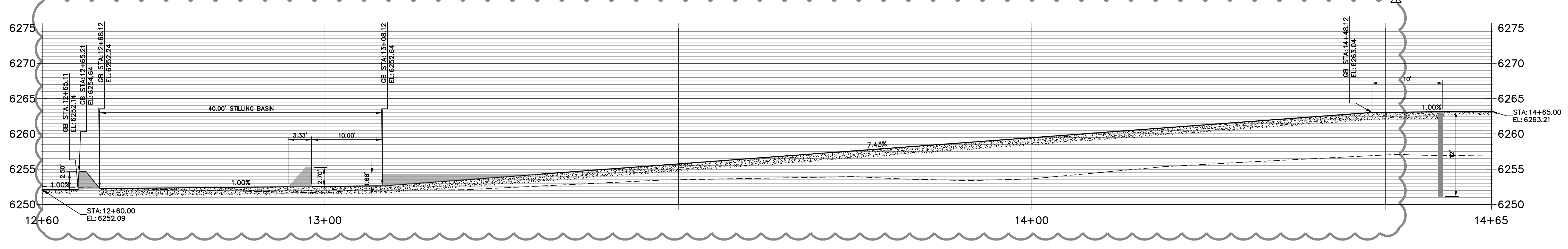
DATE: 08/03/22
 32314



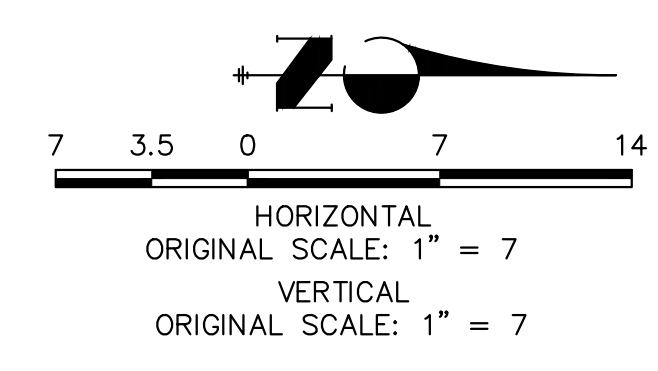
PREPARED FOR CS POWERS & GALLEY LLC 510 S. NEIL ST. CHAMPAIGN, IL 61820 OFFICE PHONE (734) 216-2577	UNTIL SUCH TIME AS THESE DRAWINGS ARE APPROVED BY THE APPROPRIATE REVIEWING AGENCIES, JR ENGINEERING APPROVES THEIR USE. DESIGNS, SPECIFICATIONS DESIGNATED BY WRITTEN AUTHORIZATION.
BY DATE JBP 11/07/22	No. REVISION 1 CHANNEL DROP CHANGES
H-SCALE 1"=20' V-SCALE 1"=2' DATE 08/03/22 DESIGNED BY JBP DRAWN BY JBP CHECKED BY	SAND CREEK CENTER TRIBUTARY CHANNEL PLAN AND PROFILES SHEET 4 OF 10 JOB NO. 25174.00



**DROP 1 PROFILE
STA 12+60.00 TO 14+65.00**

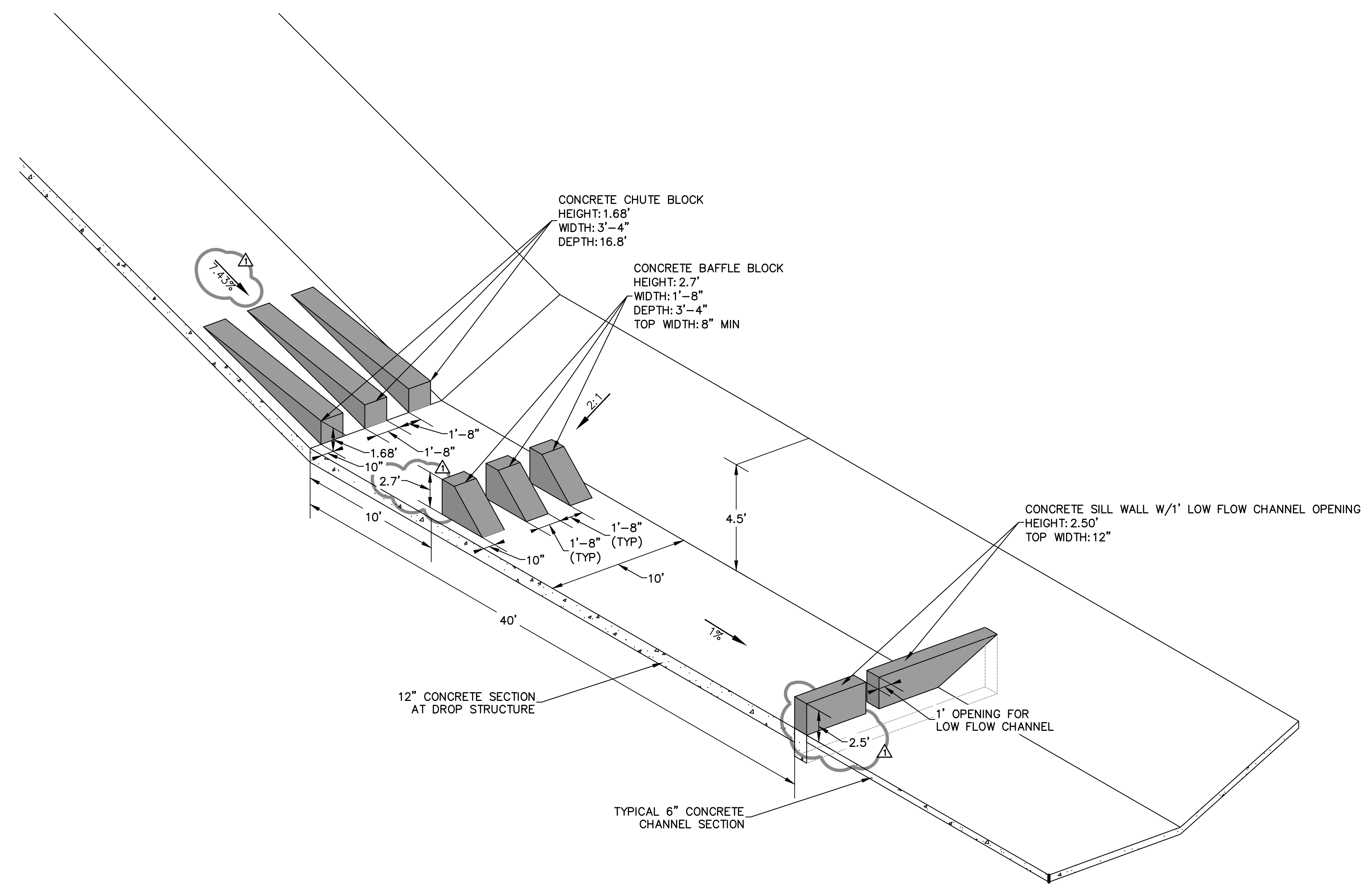


APPROVED
Engineering Department
12/15/2022 4:20:15 PM
dsdnijkamp
EPC Planning & Community
Development Department



ENGINEER'S STATEMENT
PREPARED UNDER MY DIRECT SUPERVISION AND ON BEHALF OF JR ENGINEERING
Mike Bramlett
MIKE A. BRAMLETT, P.E.
COLORADO P.E. 32314
FOR AND ON BEHALF OF JR ENGINEERING, INC. LOCAL ENGINEER
DATE 08/03/22

UNTIL SUCH TIME AS THESE DRAWINGS ARE APPROVED BY THE APPROPRIATE REVIEWING AGENCIES, OR ENGINEERING APPROVES THEIR USE, THESE DRAWINGS ARE DESIGNATED BY WRITTEN AUTHORIZATION.	
PREPARED FOR	CS POWERS & GALLEY LLC 510 S. NEIL ST. CHAMPAIGN, IL 61820 OFFICE PHONE (734) 216-2577
BY	JBP 11/07/22
REVISION	1 CHANNEL DROP CHANGES
H-SCALE	1" = 7'
V-SCALE	1" = 7'
DATE	08/03/22
DESIGNED BY	JBP
DRAWN BY	JBP
CHECKED BY	
SAND CREEK CENTER TRIBUTARY	
DROP STRUCTURES PLAN AND PROFILE	
SHEET	8 OF 10
JOB NO.	25174.00



APPROVED
 Engineering Department
 12/15/2022 4:20:21 PM
 dsnjikamp
 EPC Planning & Community
 Development Department



ENGINEER'S STATEMENT
 PREPARED UNDER MY DIRECT SUPERVISION AND ON BEHALF OF JR ENGINEERING
 Mike Bramlett
 32314
 08/03/22
 MIKE A. BRAMLETT, P.E.
 COLORADO P.E. 32314
 FOR AND ON BEHALF OF JR ENGINEERING

UNTIL SUCH TIME AS THESE DRAWINGS ARE APPROVED BY THE APPROPRIATE REVIEWING AGENCIES, JR ENGINEERING APPROVES THEIR USE IN THE MANNER DESIGNATED BY WRITTEN AUTHORIZATION.

PREPARED FOR
CS POWERS & GALLEY LLC
 510 S. NEIL ST.
 CHAMPAIGN, IL 61820
 OFFICE PHONE (734) 216-2577

J.R. ENGINEERING
 A Westman Company
 Centennial 303-740-9888 • Colorado Springs 719-588-2583
 Fort Collins 970-491-9888 • www.jrengineering.com

BY	DATE	REVISION	NO.	H-SCALE	V-SCALE	DATE	DESIGNED BY	DRAWN BY	CHECKED BY
JBP	11/07/22	CHANNEL DROP CHANGES	1	N/A	N/A	08/03/22	JBP	JBP	

SAND CREEK CENTER
 TRIBUTARY
 DROP STRUCTURE DETAIL
 SHEETS

SHEET 9 OF 10
 JOB NO. 25174.00