
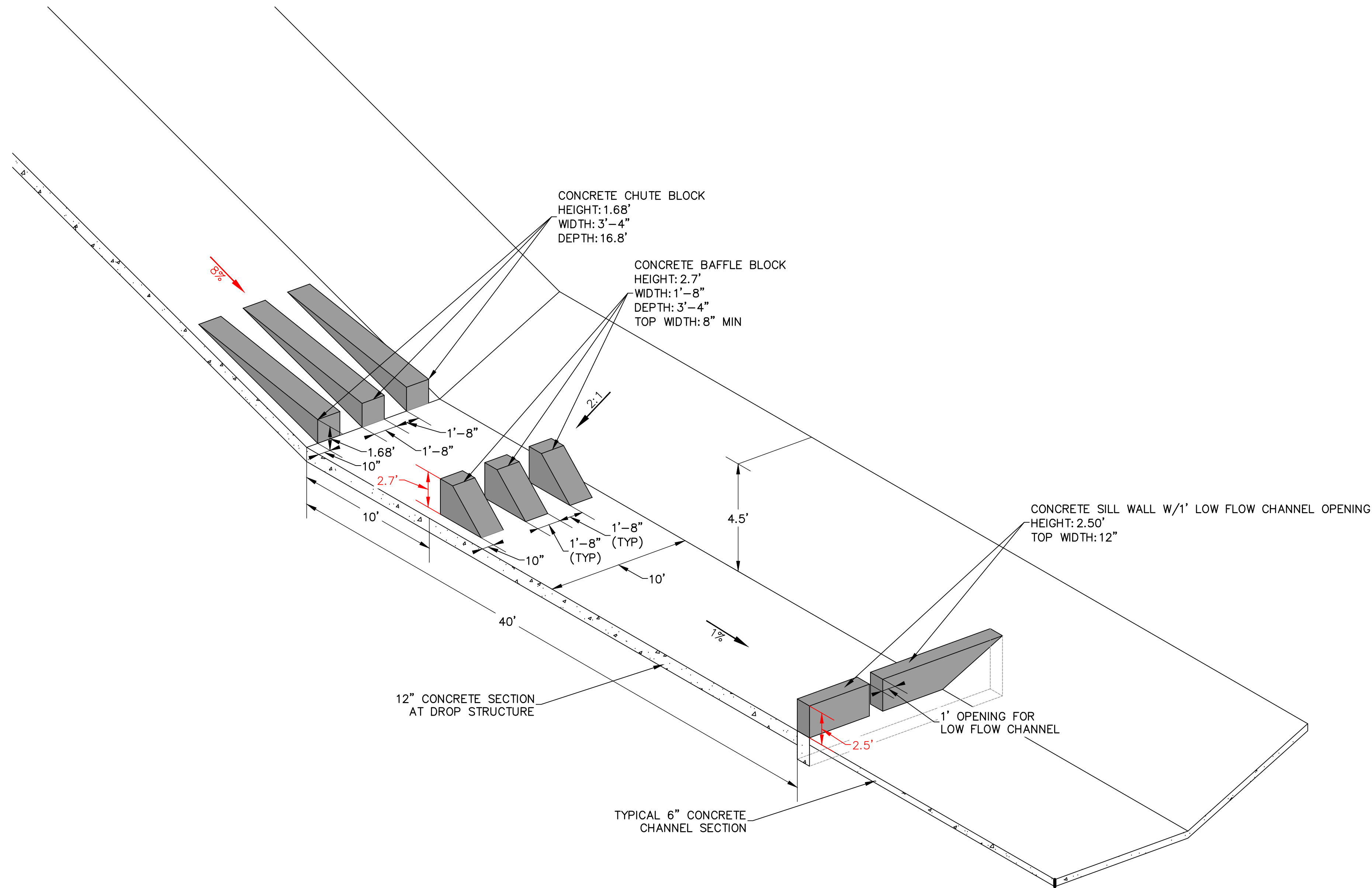


SHEET 4 OF 10	SAND CREEK CENTER TRIBUTARY		H-SCALE 1"=20'	1"=20'	No.	REVISION	BY	DATE	<p>UNTIL SUCH TIME AS THESE DRAWINGS ARE APPROVED BY THE APPROPRIATE REVIEWING AGENCIES, JR ENGINEERING APPROVES THEIR USE ONLY FOR THE PURPOSES DESIGNATED BY WRITTEN AUTHORIZATION.</p>
	CHANNEL PLAN AND PROFILES		V-SCALE 1"=2'	1"=2'					
			DATE	08/03/22					
			DESIGNED BY	JBp					
JOB NO.	25174.00		DRAWN BY	JBp					<p>CS POWERS & GALLEY LLC 510 S. NEIL ST. CHAMPAIGN, IL 61820 OFFICE PHONE (734) 216-2577</p>
		CHECKED BY							
						<p>JR ENGINEERING A Westman Company</p>			<p>CENTRAL 303-740-5383 • COLORADO SPRINGS 719-589-2688 FAX 303-970-491-8888 • www.jrengineering.com</p>



Please also provide an updated drop structures plan and profile sheet (sheet 8 of 10 of original plans)



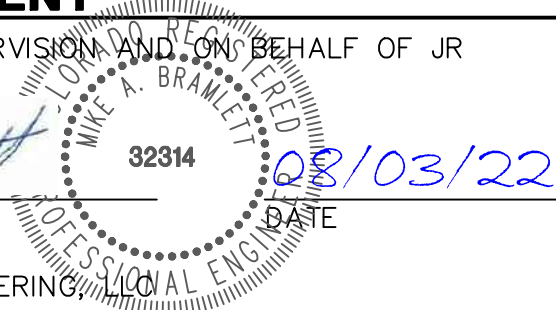
Know what's below.
Call before you dig.

ENGINEER'S STATEMENT

PREPARED UNDER MY DIRECT SUPERVISION AND ON BEHALF OF JR
ENGINEERING

MIKE A. BRAMLETT, P.E.
COLORADO P.E. 32314

FOR AND ON BEHALF OF JR ENGINEERING



SAND CREEK CENTER
TRIBUTARY

DROP STRUCTURE DETAIL
SHEETS

SHEET 9 OF 10

JOB NO. 25174.00

BY DATE

No. REVISION

H-SCALE V-SCALE DATE DESIGNED BY DRAWN BY CHECKED BY

N/A N/A 08/03/22 JBP JBP

PREPARED FOR

CS POWERS & GALLEY LLC
510 S. NEIL ST.
CHAMPAIGN, IL 61820
OFFICE PHONE (734) 216-2577

J.R. ENGINEERING
A Western Company



Central 303-740-9888 • Colorado Springs 719-583-2583
Fort Collins 970-491-9888 • www.jrengineering.com

UNTIL SUCH TIME AS
THESE DRAWINGS ARE
APPROVED BY THE
APPROPRIATE REVIEWING
AGENCIES, OR ENGINEERING
APPROVES THEIR USE
FOR OTHER PURPOSES
DESIGNATED BY WRITTEN
AUTHORIZATION.