

HYDROLOGIC SOIL GROUP	
MAP UNIT NUMBER	DESCRIPTION
40	KETTLE GRAVELLY LOAMY SAND, HYDROLOGIC SOIL GROUP 8, SLIGHT TO MODERATE HAZARD OF EROSION
71	FRINGE COARSE SANDY LOAM, HYDROLOGIC SOIL GROUP 8, MODERATE HAZARD OF EROSION

EROSION CONTROL DATA	
TIMING	
ANTICIPATED START & COMPLETION TIME PERIOD OF SITE GRADING	—
EXPECTED DATE ON WHICH FINAL STABILIZATION WILL BE COMPLETED	—
AREAS	
TOTAL AREA OF SITE	35.296 ACRES
AREA OF THE SITE TO BE CLEARED, EXCAVATED OR GRADED	3.14 ACRES
RECEIVING WATERS	
NAME OF RECEIVING WATERS	COTTONWOOD CREEK
SOIL DATA	
PRIMARY SOIL DESCRIPTION	SEE TABLE
PERMEABILITY	RAPID
SURFACE RUNOFF	MEDIUM
HAZARD OF EROSION	MODERATE
HYDROLOGIC SOIL GROUP	8
EXISTING PERCENT IMPERVIOUS	8%
DEVELOPED PERCENT IMPERVIOUS	13.9%

BMP LEGEND		
MAP SYMBOL	KEY	DESCRIPTION
INITIAL BMPs		
	SP	STOCKPILE MANAGEMENT (Initial BMP)
	SSA	STABILIZED STAGING AREA (Initial BMP)
	SCL	SEDIMENT CONTROL LOG (Initial BMP)
	VTC	VEHICLE TRACKING CONTROL (Initial BMP)
	SF	SILT FENCE (Initial BMP)
	IP	CULVERT INLET PROTECTION (Initial BMP)
INTERIM BMPs		
	ECB	EROSION CONTROL BLANKET (Interim BMP)
	SBB	STRAW BALE BARRIER AS CHECK DAM (Interim BMP)
	OP	OUTLET PROTECTION (RIP-RAP) (Interim BMP)

BMP LEGEND		
MAP SYMBOL	KEY	DESCRIPTION
FINAL BMPs		
	SR	SURFACE ROUGHENING (Final BMP)
	MU	MULCHING (Final BMP)
	PS	PERMANENT SEEDING (Final BMP)
	RCD	ROCK CHECK DAM (Final BMP)
		DRAINAGE FLOW ARROW
		LIMITS OF CONSTRUCTION/DISTURBANCE
		LIMITS OF SOIL TYPE
		CUT/FILL BOUNDARY

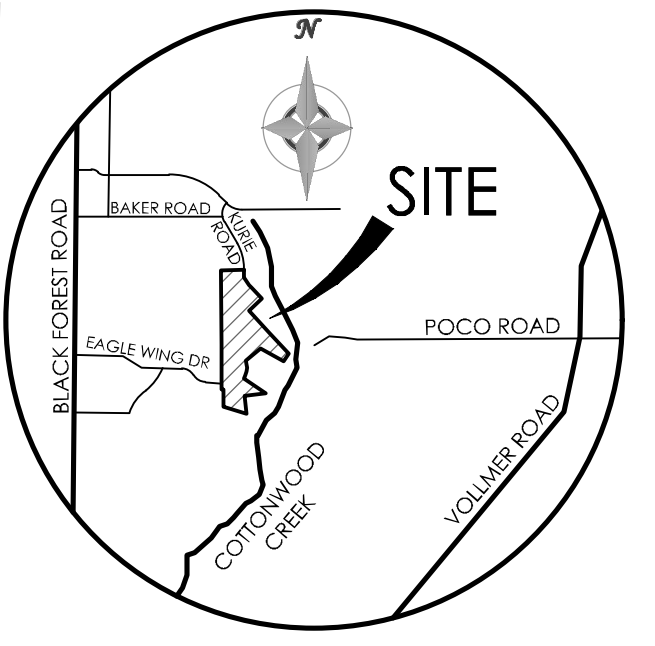
EROSION CONTROL NOTES

- 1.) ALL DISTURBED AREAS SHALL BE REVEGETATED. SEE GENERAL NOTES FOR SEED MIX AND APPLICATION NOTES.
- 2.) RIP-RAP APRONS WILL BE PLACED AT ALL CULVERT OUTLETS. (SEE DETAILS FOR RIP-RAP APRONS ON THIS SHEET.)
- 3.) HAY BALS WILL BE PLACED UPSTREAM OF CULVERTS IN NEW ROADSIDE DITCHES AS DETERMINED IN THE FIELD BY THE ENGINEER.
- 4.) ALL PERSONS ENGAGED IN EARTH DISTURBANCE SHALL IMPLEMENT AND MAINTAIN ACCEPTABLE SOIL EROSION AND SEDIMENT CONTROL MEASURES INCLUDING BMPs IN CONFORMANCE WITH THIS EROSION CONTROL PLAN AND THE BMP DETAILS SHOWN ON THIS PLAN.
- 5.) THE INSTALLATION OF THE FIRST LEVEL OF TEMPORARY EROSION CONTROL FACILITIES AND BMPs SHALL BE INSTALLED PRIOR TO ANY EARTH DISTURBANCE OPERATIONS TAKING PLACE.
- 6.) CONTRACTOR SHALL PROVIDE APPROPRIATE EROSION CONTROL MEASURES DURING EARTHWORK OPERATIONS TO CONTROL EROSION AND SEDIMENT TRANSFER TO ADJACENT PROPERTIES. EROSION CONTROL MEASURES ARE NOT LIMITED TO THOSE NOTED ON THIS PLAN.
- 7.) SEDIMENT (MUD AND DIRT) TRANSPORTED ONTO A PUBLIC ROAD, REGARDLESS OF THE SIZE OF THE SITE, SHALL BE CLEANED AT THE END OF EACH DAY.
- 8.) SOIL EROSION CONTROL MEASURES FOR ALL SLOPES, CHANNELS, DITCHES, OR ANY DISTURBED LAND AREA SHALL BE COMPLETED WITHIN FOURTEEN (14) CALENDAR DAYS AFTER FINAL GRADING OR FINAL EARTH DISTURBANCE HAS BEEN COMPLETED. DISTURBED AREAS AND STOCKPILES WHICH ARE NOT AT FINAL GRADE BUT WILL REMAIN DORMANT FOR LONGER THAN 30 DAYS SHALL ALSO BE MULCHED WITHIN 14 DAYS AFTER INTERIM GRADING. AN AREA THAT IS GOING TO REMAIN IN AN INTERIM STATE FOR MORE THAN 60 DAYS SHALL ALSO BE SEEDDED. ALL TEMPORARY SOIL EROSION CONTROL MEASURES AND BMPs SHALL BE MAINTAINED UNTIL PERMANENT SOIL EROSION CONTROL MEASURES ARE IMPLEMENTED.

GENERAL NOTES

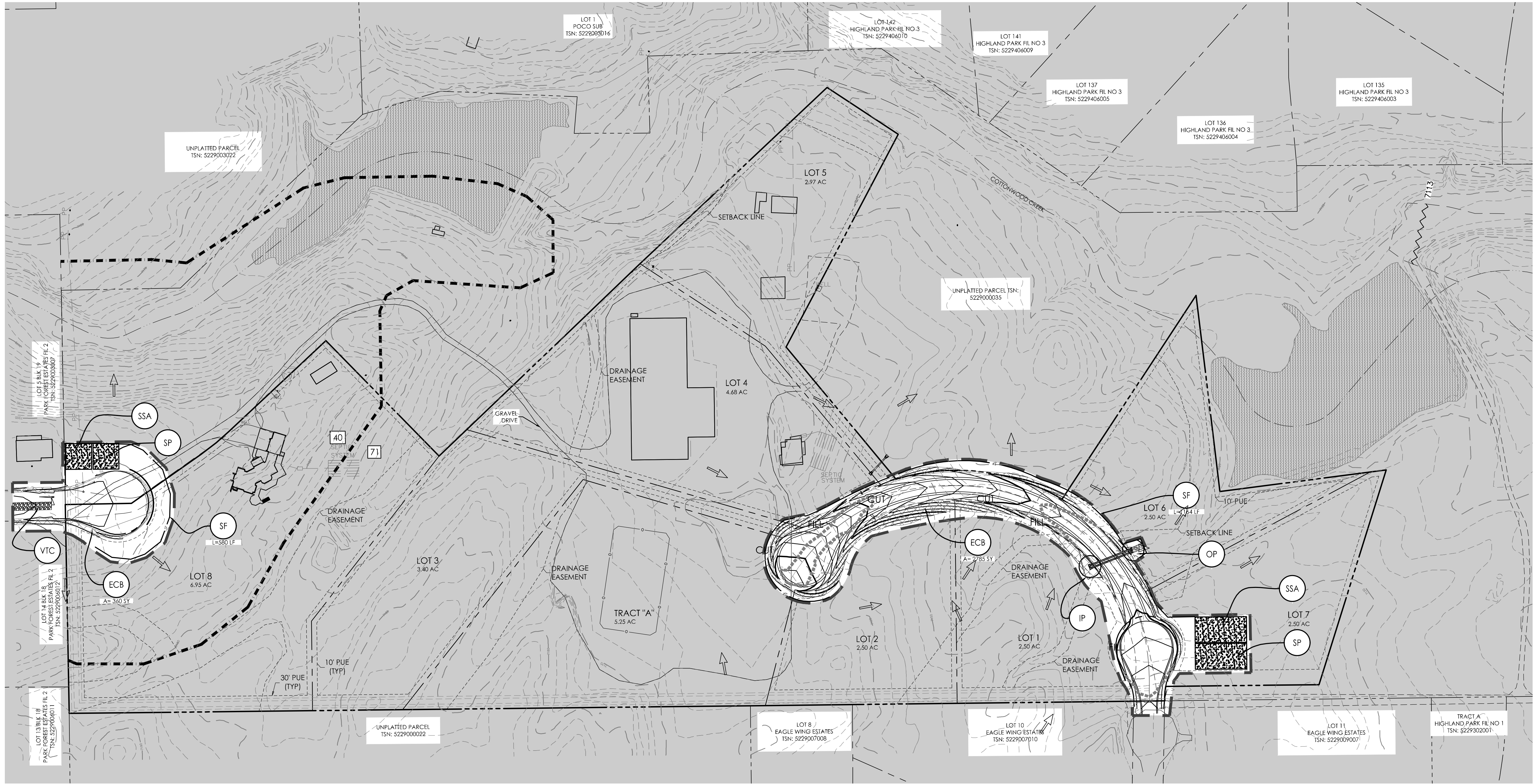
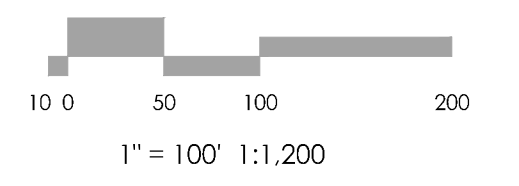
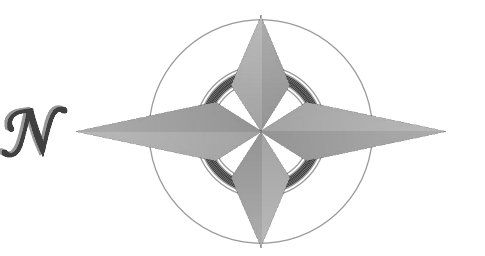
THERE ARE NO PROPOSED BATCH PLANTS ON SITE
THERE ARE NOT ANY NO-BUILD AREAS INDICATED ON THIS PLAN
VEGETATION:
SITE CONSIST OF OPEN PRAIRIE WITH NATIVE GRASSES.

*NOTE: CONTRACTOR MAY NEED EPC "WORK IN THE ROW PERMIT" FOR THE CONNECTION TO THE EXISTING ROAD.



VICINITY MAP
NOT TO SCALE

BENCHMARK



REVISIONS

DESIGNED BY _____
DRAWN BY _____
CHECKED BY _____
AS-BUILTS BY _____
CHECKED BY _____

EAGLE RISING

PRELIMINARY GRADING
& EROSION CONTROL
PLAN

MVE PROJECT 61145
MVE DRAWING PRE-EC

OCTOBER 12, 2022
SHEET 1 OF 1

