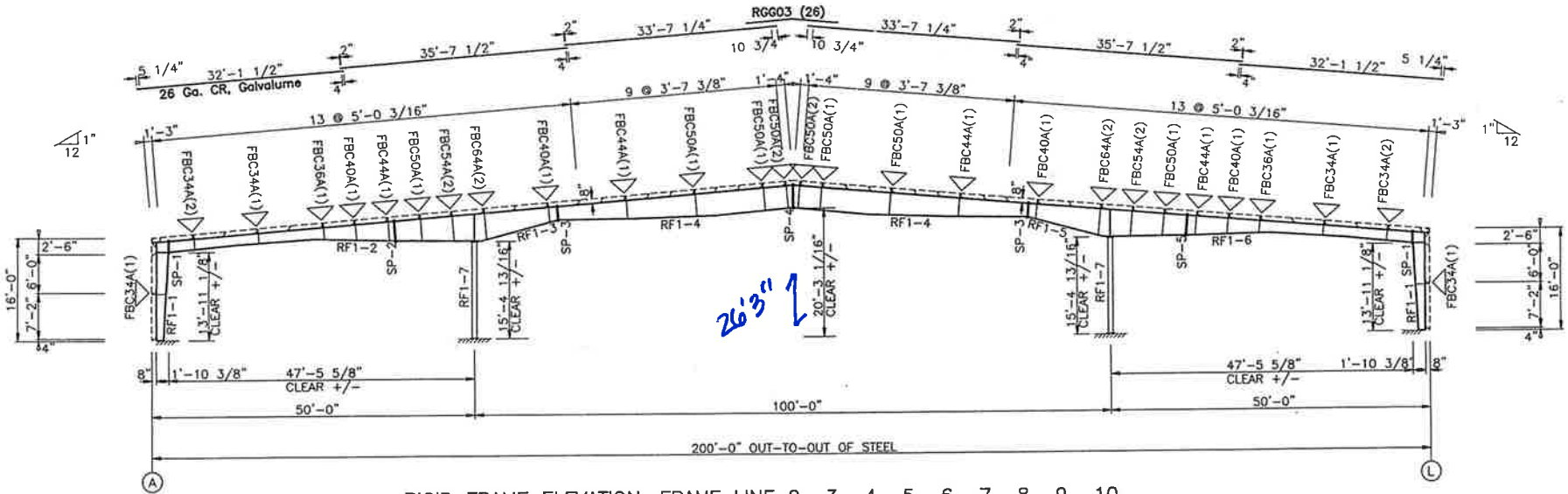


SPLICE PLATE & BOLT TABLE										CAP PLATE BOLTS				
Mark	Qty Top	Qty Bot	Int	Type	Dia	Length	Width	Thick	Length	Mark	Qty	Type	Dia	Length
SP-1	4	4	0	A325	0.625	2.25	6"	3/8"	2'-1"	RF1-7	4	A325	0.750	3.00
SP-2	4	4	0	A325	0.875	3.00	6"	1/2"	3'-6 1/2"					
SP-3	4	4	0	A325	0.750	3.00	6"	1/2"	2'-6 1/4"					
SP-4	4	4	0	A325	1.000	3.25	6"	3/4"	4'-0 7/8"					
SP-5	4	4	0	A325	0.875	3.00	6"	3/4"	3'-7 1/8"					

Mark	Web Depth		Web Plate		Outside Flange		Inside Flange	
	Start	End	Thick	Length	W x Thk	x Length	W x Thk	x Length
RF1-1	11.5	22.0	0.125	163.9	5 x 3/16"	x 184.1	5 x 3/16"	x 164.2
	22.0	22.0	0.164	22.0	5 x 3/16"	x 30.0		
RF1-2	19.0	17.0	0.125	127.2	5 x 3/16"	x 269.6	5 x 3/16"	x 127.2
	17.0	19.0	0.150	144.0	5 x 5/16"	x 149.3		
	19.0	34.9	0.220	149.3				
RF1-3	35.1	49.5	0.275	158.6	8 x 5/16"	x 304.8		
	49.5	23.6	0.313	146.3				
RF1-4	23.5	34.0	0.220	149.5	6 x 5/16"	x 149.5		
	34.0	41.5	0.220	150.0	6 x 1/2"	x 150.0		
	41.5	40.0	0.188	146.6	6 x 5/8"	x 146.6		
RF1-5	23.6	49.5	0.313	146.3	8 x 5/16"	x 298.8		
	49.5	35.6	0.275	152.6				
RF1-6	35.6	35.0	0.275	5.2	6 x 5/16"	x 5.2		
	35.0	19.0	0.220	150.0	6 x 1/2"	x 150.0		
	19.0	17.0	0.150	144.0	6 x 5/8"	x 144.0		
RF1-7	17.0	19.0	0.125	127.2	5 x 3/16"	x 269.6	5 x 3/16"	x 127.2
					8x188			



RIGID FRAME ELEVATION: FRAME LINE 2 3 4 5 6 7 8 9 10

GENERAL NOTES

- ▽ INDICATES FLANGE BRACING LOCATIONS. (1) = ONE SIDE; (2) = TWO SIDES.
- IF FLANGE BRACING IS REQUIRED ON BOTH SIDES OF AN EXPANDABLE RIGID FRAME, THE OPPOSITE SIDE FLANGE BRACES WILL HAVE TO BE INSTALLED AT THE TIME OF FUTURE EXPANSION. THESE FLANGE BRACES HAVE BEEN PROVIDED, AS REQUIRED, FOR THIS FUTURE CONDITION.
- RIGID FRAMES SHALL HAVE 50% OF THEIR BOLTS INSTALLED AND TIGHTENED ON BOTH SIDES OF THE WEB ADJACENT TO EACH FLANGE BEFORE THE HOISTING EQUIPMENT IS RELEASED.

CONSTRUCTION	REVIEW	DATE
CONSTRUCTION ANCHOR BOLTS	MSK CLK	SRK CLK
BUILDING DEPARTMENT REVIEW	MSK CLK	SRK CLK

METAL BUILDING OUTLET CORP.
 PHONE: (303) 948-1000
 (303) 948-3039

PROJECT NAME: SHAJUN ROMANO PEYTON, CO
 CUSTOMER NAME: METAL BUILDING OUTLET LITTLETON, CO
 JOB NUMBER: U16L0738A

SHRETTLE
 PROFESSIONAL ENGINEER
 LICENSE NO. 172818
 EXPIRES 12/31/2028