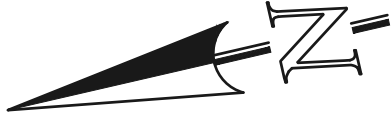
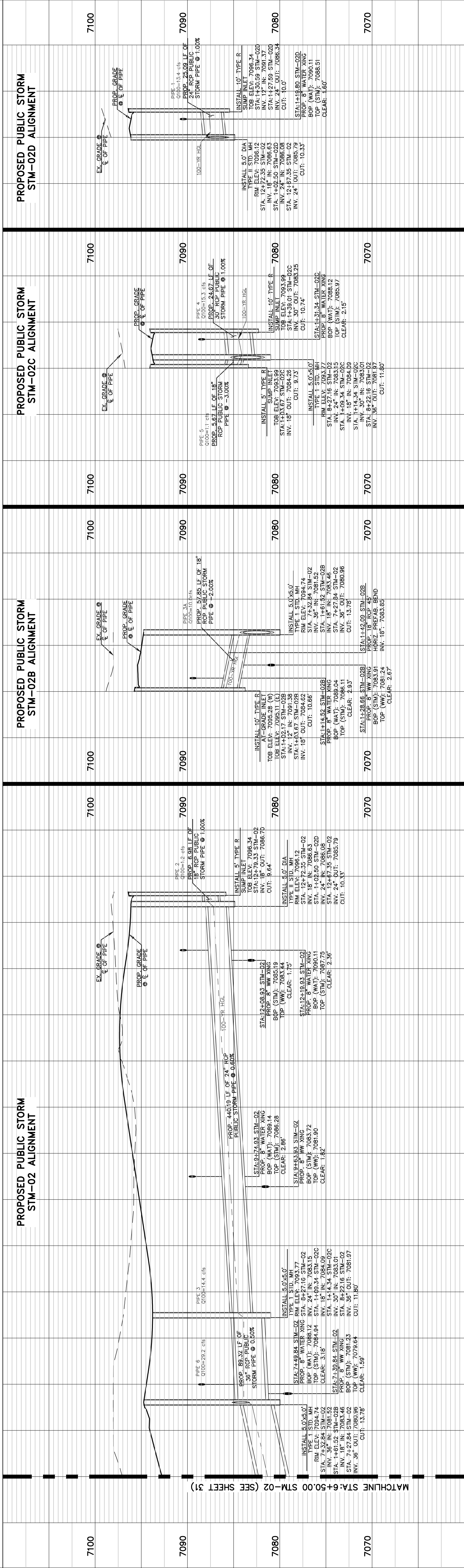
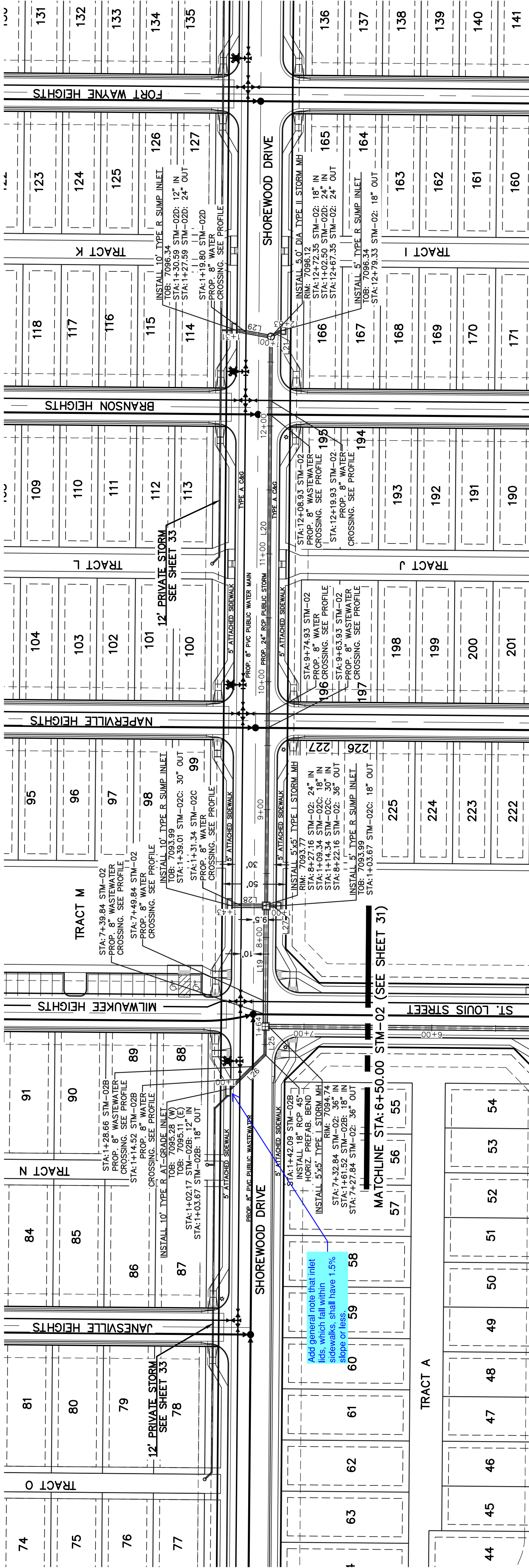


LINE	LENGTH	BEARING
L16	428.84	N13°28'29"E
L19	88.32	S76°31'31"E
L20	440.20	S76°31'31"E
L21	6.97	S16°54'44"E
L25	19.42	N76°31'31"W
L26	38.42	N31°31'31"W
L27	5.67	N13°28'29"E
L28	24.67	N13°28'29"E
L29	25.09	N32°28'29"E



SCALE: 1" = 50'



<div>48 HOURS BEFORE YOU DIG, CALL UTILITY LOCATORS</div> <div>811</div> <div>UTILITY NOTIFICATION CENTER OF COLORADO</div> <div>IT'S THE LAW</div> <div>THE LOCATIONS OF EXISTING UNDERGROUND UTILITIES ARE SHOWN IN AN APPROXIMATE WAY ONLY. THE CONTRACTOR SHALL DETERMINE THE EXACT LOCATION OF ALL EXISTING UTILITIES BEFORE ANY EXCAVATION OR CONSTRUCTION SHALL BE FULLY RESPONSIBLE FOR ANY AND ALL DAMAGES WHICH MIGHT BE CAUSED BY HIS FAILURE TO EXACTLY LOCATE AND PRESERVE ANY AND ALL UNDERGROUND UTILITIES.</div>	NO. REVISION	DATE
REVIEW:		05/29/25
PREPARED UNDER AS DIRECT SUPERVISION FOR AND ON BEHALF OF CLASSIC CONSULTING ENGINEERS AND SURVEYORS, LLC		DATE
<div><div>CLASSIC CONSULTING ENGINEERS AND SURVEYORS, LLC</div><div>15004</div><div>PROFESSIONAL SEAL</div></div> <div>CATHERINE M. O'NEILL, P.E. #45004</div>		

CLASSIC CONSULTING		DATE	11/01/2024
VILLAGES AT STERLING RANCH		SHEET	32 OF 35
PUBLIC STORM PLANS		(H) 1"=	50'
SHOREWOOD DRIVE		EAS	
DESIGNED BY	EAS	CHECKED BY	
DRAWN BY			
619 N. Cascade Avenue, Suite 200 Colorado Springs, Colorado 80903		(V) 1"=	5'
		JOB NO.	1183.26