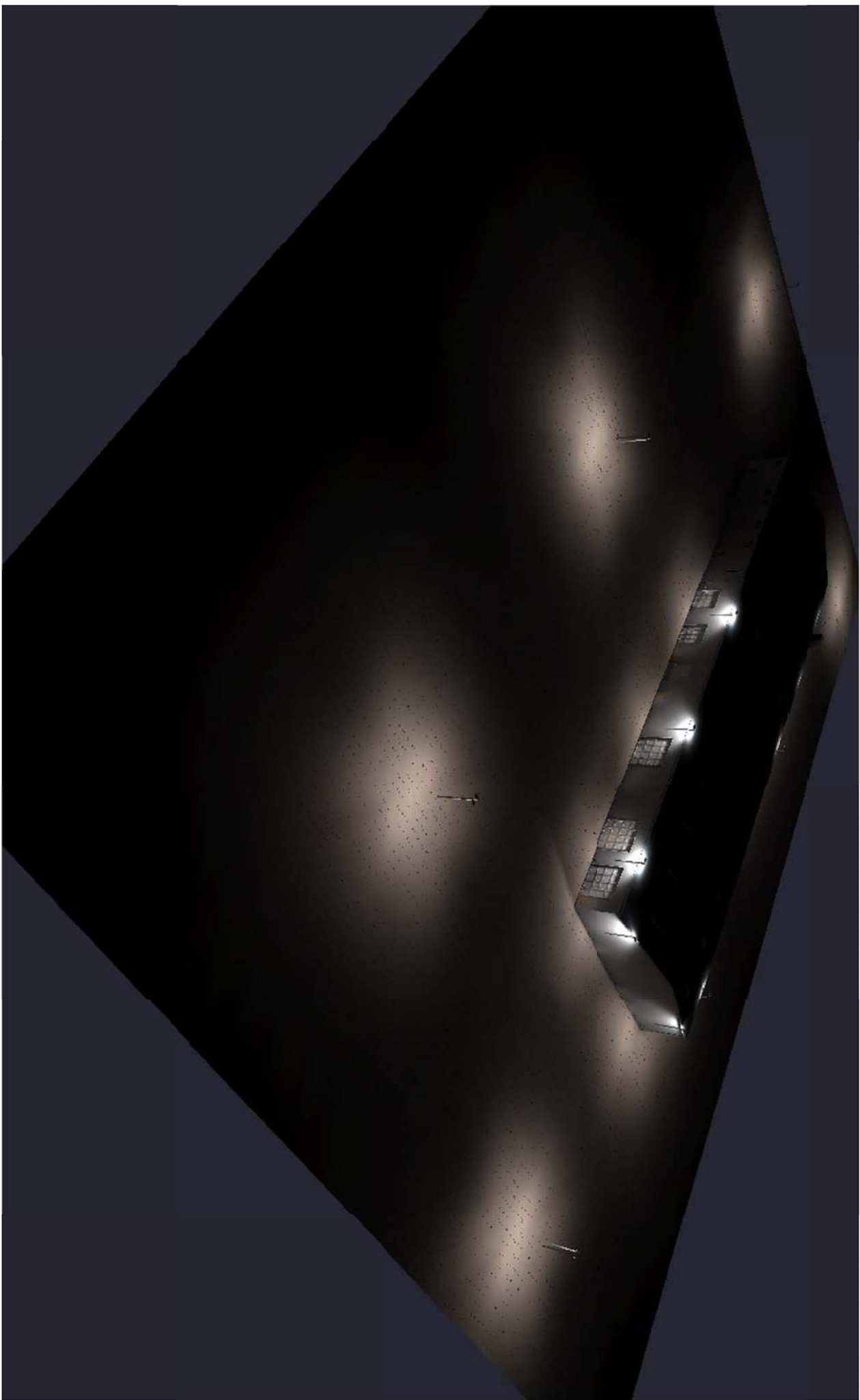


LIGHTING NOTES:

- 1. AVERAGE MAINTAINED ILLUMINATION FOR EXTERIOR AND PEDESTRIAN RIGHT-OF-WAY 1.0 fc.
- 2. ALL EXTERIOR LIGHTING TO BE LED LIGHTS.
- 3. ALL EXTERIOR POLES AND MOUNTING HARDWARE TO BE BLACK OR FEDERAL GREEN.
- 4. LIGHTING CALCULATED AT 20 MOUNTING HEIGHT. POLE HEIGHT NOT TO EXCEED MAXIMUMS SET BY LOCAL JURISDICTION.
- 5. ALL LIGHTS TO BE FULL CUTOFF.
- 6. WALL LIGHTING TO BE LEFT 90 DEGREE CUTOFF OR R (RIGHT 90 DEGREE CUTOFF) SO AS NOT TO SPILL LIGHT BEYOND THE SITE PROPERTY LINE.
- 7. ANY PROPOSED LIGHT FIXTURES INSTALLED ON PRIVATE PROPERTY, ADJACENT TO THE PUBLIC RIGHT-OF-WAY, SHALL BE ORIENTED IN SUCH A MANNER OR LIMITED IN LUMENOUTPUT TO PREVENT GLARE. PROBLEMS AND SHALL NOT EXCEED NATIONAL I.E.S. LIGHTING STANDARDS FOR DISABILITY GLARE.



PERSPECTIVE VIEW RENDERING  
NOT TO SCALE



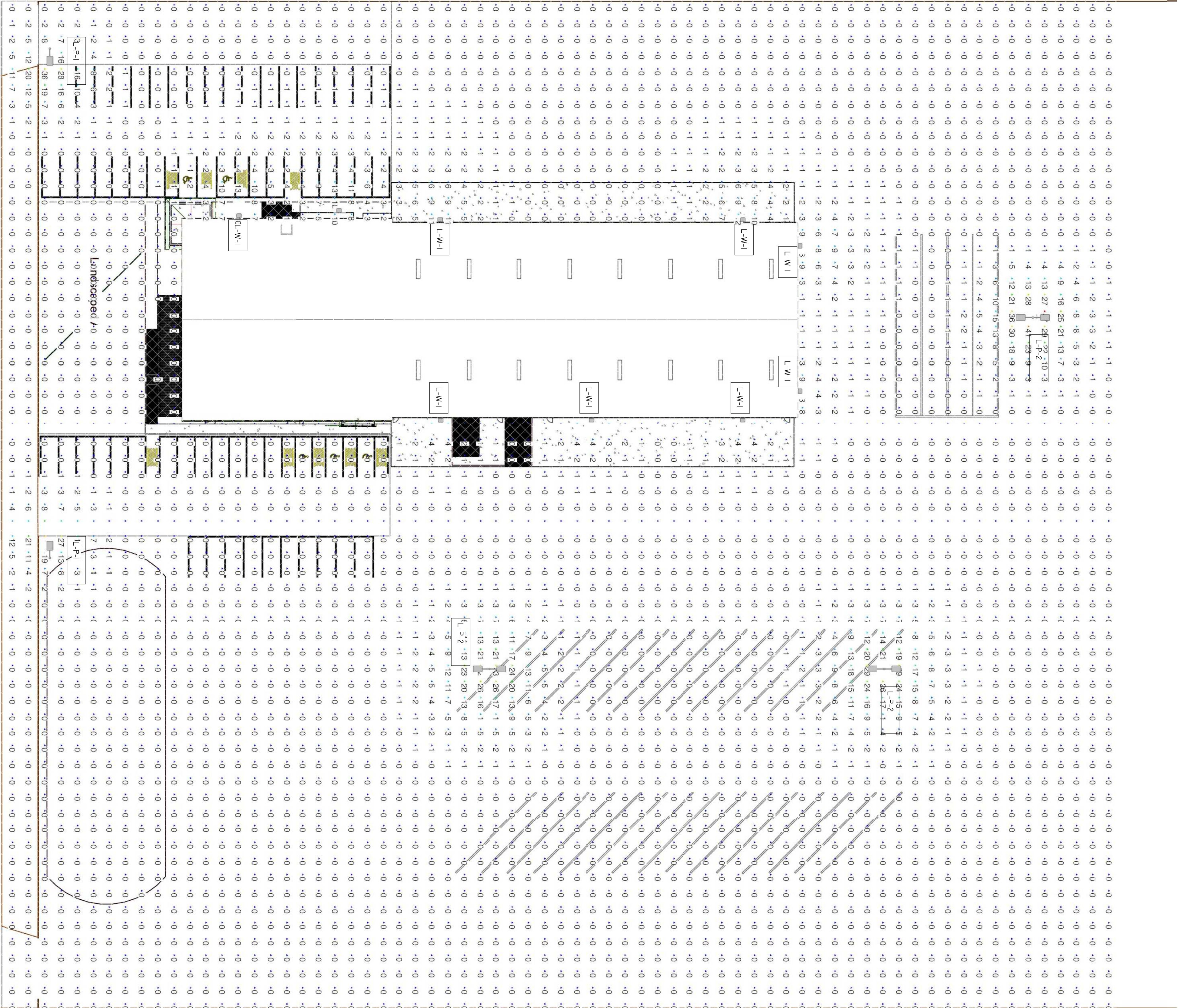
TOP VIEW RENDERING  
NOT TO SCALE

LIGHTING SCHEDULE

FIXTURE TAG	COUNT	FIXTURE DESCRIPTION	MANUFACTURER PART NUMBER	MANUFACTURER	TYPE	ELECTRICAL	OUTPUT (LUMENS)	DISTRIBUTION	HOUSING COLOR
L-P-1	2	SINGLE POLE MOUNT	E-CONN-LIGHT	E-FAI4313CZ (POLE TBD)	LED	120V/5A	23,963 LM TYPE 3 - FULL CUTOFF	BLACK	BLACK
L-P-2	3	DOUBLE POLE MOUNT	E-CONN-LIGHT	E-FAI4313CZ (POLE TBD)	LED	120V/25A	23,963 LM TYPE 3 - FULL CUTOFF	BLACK	BLACK
L-W-1	9	OUTDOOR WALL MOUNT	E-CONN-LIGHT	E-WP4120CZ	LED	120V/10A	16,917 LM TYPE 3 - SPILL CUTOFF	BLACK	BLACK

LIGHTING STATISTICS

Avg. Illuminance (fc)	Min. Illuminance (fc)	Max. Illuminance (fc)
0.92	2.0	46.98



1 SITE PHOTOMETRIC  
1" = 30'-0"



VERADYN ENGINEERING  
5680 PECOS ST.  
DENVER, CO 80221

720.612.7553  
DUSTIN@VERADYN.COM

TIMBERLINE  
LANDSCAPING, Inc.  
3499 CAPITAL DRIVE  
COLORADO SPRINGS,  
COLORADO 80939

DRAWN BY: EC

CHECKED BY: DR

REVISIONS:

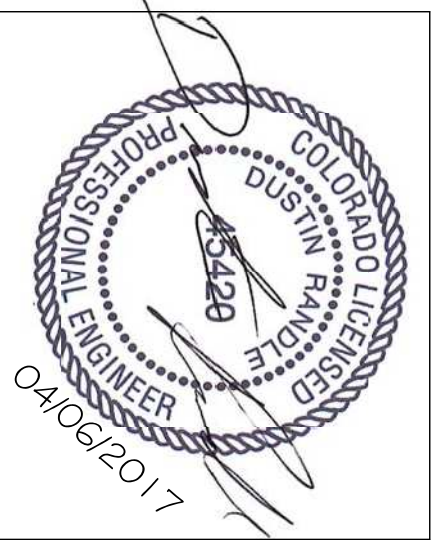
NO.	DESCRIPTION	DATE
-----	-------------	------


ISSUE RECORD:

NO.	DESCRIPTION	DATE
-----	-------------	------


SHEET COMMENTS:

EXTERIOR  
PHOTOMETRIC  
PLAN



PROJECT NO: 2017.031

DATE: 4/6/2017 9:24:38 AM

DRAWING NO.:

L 0.0