

# **PRELIMINARY/FINAL DRAINAGE REPORT**

## **FOR**

### **CROSSROADS MIXED USE FILING NO. 2 EL PASO COUNTY, COLORADO**

NOVEMBER 2022

Prepared for:  
Crossroads Development Company, LLC  
Mr. Danny Mientka  
90 South Cascade Avenue, Suite 1500  
Colorado Springs, Colorado Springs 80903

Prepared by:



**CIVIL CONSULTANTS, INC.**  
212 N. Wahsatch Avenue, Suite 305  
Colorado Springs, CO 80903  
(719) 955-5485

Project #18-004  
PCD Filing No.: SF XX-XXX

EPC's EDARP File  
Number: SF2238  
(with no dashes or  
extras zeros or extra  
spaces in the file  
number)

The File Number has been  
added to the document.

**FINAL DRAINAGE REPORT  
FOR  
CROSSROADS MIXED USE FILING NO. 2**

**DRAINAGE PLAN STATEMENTS**

ENGINEERS STATEMENT

The attached drainage plan and report was prepared under my direction and supervision and are correct to the best of my knowledge and belief. Said drainage report has been prepared according to the criteria established by the County for drainage reports and said report is in conformity with the master plan of the drainage basin. I accept responsibility for any liability caused by any negligent acts, errors or omissions on my part in preparing this report.

\_\_\_\_\_  
Virgil A. Sanchez, P.E. #37160  
For and on Behalf of M&S Civil Consultants, Inc

DEVELOPER'S STATEMENT

I, the developer, have read and will comply with all the requirements specified in this drainage report and plan.

BY: \_\_\_\_\_  
Danny Mientka –Owner

DATE: \_\_\_\_\_

ADDRESS: Crossroads Development Company, LLC  
90 South Cascade Avenue, Suite 1500  
Colorado Springs, CO 80903

EL PASO COUNTY'S STATEMENT

Filed in accordance with the requirements of El Paso County Land Development Code, Drainage Criteria Manual Volumes 1 and 2, and the Engineering Manual, as amended.

BY: \_\_\_\_\_ DATE: \_\_\_\_\_  
Joshua Palmer, P.E.  
County Engineer / ECM Administrator

CONDITIONS:

**PRELIMINARY/FINAL DRAINAGE REPORT  
FOR  
CROSSROADS MIXED USE FILING NO. 2**

**TABLE OF CONTENTS**

PURPOSE	4
PROJECT LOCATION AND DESCRIPTION	4
SOILS	4
FLOODPLAIN STATEMENT	5
PREVIOUS STUDIES	5
HYDROLOGIC CALCULATIONS	6
HYDRAULIC CALCULATIONS	7
DRAINAGE CRITERIA	7
EXISTING DRAINAGE CONDITIONS	7
FOUR STEP PROCESS	9
PROPOSED DRAINAGE CONDITIONS	10
WATER QUALITY PROVISIONS AND MAINTENANCE	15
EROSION CONTROL	15
DRAINAGE & BRIDGE FEES	16
CONSTRUCTION COST ESTIMATE	16
SUMMARY	16
REFERENCES	17

**APPENDIX**

Vicinity Map  
Soils Map  
FIRM Panels  
Hydrologic Calculations  
Hydraulic Calculations  
Background  
Drainage Maps

Update report contents to change any mention of the FSD pond to the new BMP that is being used throughout the report.

The report has been updated to change any mention of FSD to the new UGD.

**PRELIMINARY/FINAL DRAINAGE REPORT  
FOR  
CROSSROADS MIXED USE FILING NO. 2**

**Purpose**

This Final Drainage Report for Crossroads Mixed Use Filing No. 2 is in support of the Final Plat, Preliminary Plan, and Construction Drawings of the subject site. This report functions to identify the existing and proposed runoff patterns and recommend proposed drainage improvements which are intended to safely convey runoff through the proposed development, while minimizing impacts to downstream facilities and adjacent properties.

The Final Plat and Construction Drawings for this site will be submitted concurrently with this report. Individual drainage letters and/or reports shall be required with the development of each lot not otherwise clearly analyzed by this report for Crossroads Mixed Use Filing No. 2.

**Project Location and Description**

The subject site is located in the south half of Section 8, Township 14 South, Range 65 West of the 6<sup>th</sup> P.M. in El Paso County, Colorado. The 12.016 Acre site is currently undeveloped. The site is bound to the west by the planned Southern Rail Point, to the north by the Meadowbrook Parkway, south by Highway 24, and to the east by Newt Drive. The proposed site will be developed into two (2) commercial lots, three (3) tracts, and two (2) private roadways through the site.

The majority of the existing site is covered with native grasses with fair to good cover. Known earthwork operations for “borrow material” have occurred over a small area of the eastern portion of the site in early to mid-2019, but have since stabilized. Generally, the site slopes from east to west slightly greater than 1% with some localized depressions. Some of these may be the results of previous earthwork activities. The site lies within the Sand Creek Drainage Basin. No existing drainage facilities or improvements are onsite, however, surrounding drainage facilities are planned and will connect onsite. No known irrigation systems or wells are present.

**Soils**

Soils in the project area have been determined to be Blakeland Loamy Sand (8) and Blendon Sandy Loam (10), which are characterized to be part of Hydrologic Soil Types "A" & "B" as determined from the United States Department of Agriculture (USDA) Natural Resources Conservation Service (NRCS) “Web Soils Survey”. A soils map illustrating the site location and soil types is provided in the appendix of this report.



## **Floodplain Statement**

According to the Federal Emergency Management Agency (FEMA) Flood Insurance Rate Map (FIRM) Nos. 08041C0754 G & 08041C0752 G, effective date December 7<sup>th</sup>, 2018, none of the site lies within a designated floodplain. A copy of these annotated maps can be found in the appendix. The Sand Creek East Fork Channel is located to the northwest of the adjacent Meadowbrook Crossing subdivision.

## **Previous Studies**

The area which encompasses Crossroads Mixed Use Filing No. 2 has been previously studied. Below is a short outline of the assumptions regarding the lands of the subject site and those based upon the previously assembled and approved drainage reports and how the assumptions within them impact the subject site.

“Crossroads Mixed Use Filing No.1 Final Drainage Report, prepared by M&S Civil Consultants, Inc., dated February 2021, revised February 2022.

- Establishes all historic, existing, and future drainage patterns and detailed drainage information for the proposed site and adjacent properties.

“Sand Creek Drainage Basin Planning Study, Preliminary Design Report”, prepared by Kiowa Engineering Corporation, dated January 1993, revised March 1996.

- Establishes that the subject site falls within the East Fork Sand Creek Drainage Basin, a portion of the larger Sand Creek Watershed
- Establishes that there are no requirements for major infrastructure improvements and subsequently no drainage-improvement related reimbursements with the development of this parcel
- Drainage fees shall be required to plat the subdivision

"Claremont Business Park Filing No.2 prepared by Matrix Design Group, revised November 2006

- Establishes the drainage patterns of offsite Basins 0S-4 and E2 which are to be conveyed within the Meadowbrook Rights of Way
- Established up-gradient offsite drainage to be directed under Meadowbrook north to offsite East Fork Sand Creek Channel, and away from the subject site

"Final Drainage Report, Lot 1 24/94 Business Park Filing No.1 prepared by Core Engineering Group, dated July 14, 2016

- The development of the 24/94 Business Park FDR shows future curb inlets along the future Meadowbrook Parkway extension on the south and west corners of the intersection to

capture runoff from up-gradient watersheds in addition to a proposed inlet which was to be located above the intersection at the northwest corner of the subject site.

- Establishes that flows from the parcel upstream of the convenience store (29/94 FDR Basin OS4) EX-B now to be collected by the extension of a 36" RCP along the south side of Meadowbrook Parkway. Runoff within the right of way/roadway separated out as Basin EX-A2.
- Continues assumption that flows from Newt Drive be conveyed north to East Fork Sand Creek.
- Evaluated pre-development drainage patterns for subject site including direct discharge flow rates to the CDOT rights of way of 1.9 and 14.5 cfs for the 5 and 100 year events, respectively. (Basin EX-E).

"Preliminary and Final Drainage Report Meadowbrook Crossing Filing No. 1 and Filing 2, El Paso County, Colorado prepared by Kiowa Engineering Corporation, dated July 25, 2017

- Proposed the installation of a future 10' Type R inlet at the southeast corner of Newt Drive and Meadowbrook Parkway with the extension of Meadowbrook Parkway to the west (along the northern boundary of the subject site). The inlet was to function to collect offsite runoff from a portion of the south half of Meadowbrook Parkway and Newt Drive north of Hwy 24. Intercepted runoff would be conveyed via a proposed 24" storm sewer to the existing storm sewer system within the Meadowbrook Crossings development.
- Proposed the installation of a 10' Type R inlet at the west end of future Meadowbrook Parkway. The inlet was to collect runoff from the north half of the future roadway. An 18" storm drain was proposed to convey collected runoff to the existing water quality pond located within the Meadowbrook Crossings Development. The report indicates a separate forebay or the modification of an existing forebay would be required.
- Shifted the location of the existing 10' Type R curb inlet to be installed upstream of the intersection of Newt Drive (as shown with the 24/94 Business Park FDR), flows in excess of the inlet capacity are to continue within the future Meadowbrook.

"Final Drainage Report for Meadowbrook Dirt Borrow Site, El Paso County Colorado, prepared by M&S Civil Consultants, November 2018.

- Evaluated onsite drainage patterns
- Excluded offsite runoff impacts from areas to the east of site.
- Allowed site to be utilized as a "borrow site" for offsite earthwork activities.

## **Hydrologic Calculations**

Hydrologic calculations were performed using the El Paso County and City of Colorado Springs Storm Drainage Design Criteria manual and where applicable the Mile High Flood District Manual. The Rational Method was used to estimate stormwater runoff anticipated from design storms with 5-year and 100-year recurrence intervals.

## Hydraulic Calculations

Hydraulic calculations were estimated using the Manning's Formula and the methods described in the El Paso County and City of Colorado Springs Storm Drainage Design Criteria manual. Storm drains were designed using parameters and criteria summarized in Chapter 8 of El Paso County's Drainage Criteria Manual Vol. 1 and the City of Colorado Springs Drainage Criteria Manuals. Parameters such as Manning's values of 0.13 were used for concrete pipe flow, and design considerations for minimum freeboard and maximum velocities were applied. The relevant data sheets are included in the appendix of this report. Hydraulic grade line calculations for the storm system in the ultimate (future) condition are provided in the Appendix of this Final Drainage report.

## Drainage Criteria

This drainage analysis has been prepared in accordance with current El Paso County Drainage Criteria Manual and, where applicable, City of Colorado Springs and Mile High Flood District Criteria Manuals. Calculations were performed to determine runoff quantities for the 5-year and 100-year frequency storms for developed conditions using the Rational Method as required for basins having areas less than 100 acres. See Appendix for supporting calculations.

## Existing Drainage Characteristics

The subject site has been utilized as a "borrow site" to provide surplus earthwork to offsite developments in the area. This recent grading effort occurred during the spring and summer of 2019. At the request of El Paso County, an existing conditions drainage analysis has been provided to show the changes to the topography and drainage patterns as a result of this effort. As the only changes between the two conditions are onsite, the offsite drainage patterns calculations and assumptions determined within the historical analysis will remain the same. Specifically, historical basins **E2, EX-A2, OS-A, and OS-1** correlate to existing **DP1, DP2, and DP3**, respectively. It should be noted that the subject site was not disturbed to the full extent of the approved plan, with limited excavation primarily occurring within the eastern side of the site. For historic (pre-grading) drainage information, refer to the Crossroads Mixed Use Filing No. 1 FDR/MDDP (CMU1 MDDP) by M&S Civil Consultants, Inc (see appendix).

In the existing condition, vegetation remains sparse, consisting primarily of native grasses and weeds with good to fair cover. Areas disturbed by grading activities were reseeded and have since stabilized. With regards to historic versus existing drainage basin delineation, the bisecting parcel ridgeline has been relocated further to the south, which results in redirecting more of the runoff to the southwestern part of the site and less to the CDOT rights of way. The few small depressions remain on site, near the west boundary. For the purposes of hydrologic analysis, these small depressions will continue to not be evaluated for their ability to detain runoff. Ultimately, all runoff from the parcel is conveyed to the west towards existing drainage facilities located under Peterson Road and ultimately the East Fork of Sand Creek as in the historic condition.

This section only discusses the changes in basin geometry and drainage pattern and provides a direct comparison of the historic versus existing conditions, utilizing the same outfall (design) points, which have remained undisturbed.

### **Design Point 1**

**Basins E2 and EX-A2** geometry were derived from their respective reports. Flow velocity equations, conveyance coefficients, and time of concentration equations have been modified since these reports were approved, therefore, these parameters were remodeled with El Paso's hydrologic criteria current to this report's date. Excerpts of reported calculations for these basins are provided in the Appendix for comparison. **Basin E2 (Claremont Business Park Filing No.2)** consists of a reported 3.86 developed acres of development located along the southeastern half of existing Meadowbrook Parkway, some 1200' northeast of the subject site. Runoff produced by the offsite development (CBPF2 Lot 46) is conveyed to Meadowbrook Parkway at flow rates of  $Q_5=15.1$  and  $Q_{100}=28.6$  cfs in the 5 and 100-year storm events respectively. The collected flows combine with runoff from **Basin EX-A2 (Lot 1 24/94 Business Park Filing No.1)** ( $Q_5=2.5$ ,  $Q_{100}=4.5$  cfs) which consists of 0.59 acres of the southeastern half of Meadowbrook Parkway, and is located immediately east of existing Newt Drive. The collected flows from the two basins culminate at **Design Point 1** at peak rates of  $Q_5=14.2$  and  $Q_{100}=26.5$  cfs. An existing 10' CDOT Type R at-grade inlet (**Inlet 1**) intercepts flows of  $Q_5=8.4$  and  $Q_{100}=11.1$  cfs, with subsequent by-pass flows of 5.8 and 15.4 cfs in the 5 and 100 year events. Surface flows continue west within the south half of existing Meadowbrook Parkway.

### **Design Point 2**

**Basin OS-A (Meadowbrook Crossing Filing 1 and 2)** consists of 1.29 acres of the northern half of existing Meadowbrook Parkway located immediately east of Newt Drive. Runoff produced within this basin totals  $Q_5=3.1$  and  $Q_{100}=6.0$  cfs. These calculated flows differ 0.1 cfs from reported flows due to the significant digits used for the basin acreage in the flow calculation, yet can be viewed as conservative values since they are higher. An existing 10' CDOT Type R at grade inlet (**Inlet 2**) collects runoff of  $Q_5=3.1$  and  $Q_{100}=5.3$  cfs, with subsequent by-pass flows in only the 100 year event of 0.7 cfs. Runoff leaving the design point continuing west within the north half of existing Meadowbrook Parkway.

### **Design Point 3**

**Basin OS-1** consists of approximately 1.28 developed acres of existing Newt Drive located along the eastern boundary of the site. Runoff produced within the basin ( $Q_5=5.8$  cfs,  $Q_{100}=10.5$  cfs) combine with flow-by from **DP1** in the intersection at peak flow rates of 9.8 cfs, and 22.5 cfs in the 5 and 100-year storm events.

Surface runoff and by-pass flows from both **DP2** and **DP3** enter **Basin A** in the undeveloped rights of way of future Meadowbrook Parkway, at the northeast corner of the site.

### **Design Point 4**

**Basin A** ( $Q_5=1.5$ ,  $Q_{100}=11.1$  cfs) currently consists of 11.02 acres which continues to drain from east to west eventually discharging along the western boundary of the site, approximately 250'

south of the northern property line. Peak runoff, post-grading, is 7.1 and 25.5 cfs in the 5-year and 100-year events respectively.

#### **Design Point 5**

**Basin B** (Q5=2.0, Q100=14.5 cfs) consists of 17.31 acres that drains from northeast to southwest, eventually discharging along the western boundary of the site, approximately 200' north of the southern property line. Peak runoff rates at this location are 2.0 cfs and 14.5 cfs in the 5-year and 100-year events respectively.

#### **Design Point 6**

**Basin C** consists of 3.99 undeveloped acres. Right of Way at the southern boundary. Peak runoff rates at this location are 2.0 cfs in the 5-year and 100-year events respectively.

Provide narrative for DP 6.5, DP 8, DP 9 and DP 12.

The "existing drainage map" has different design points that do not effectively correlate to the design points mentioned above from the "proposed drainage map".

#### **Design Point 7**

**Basin OS-2** (Q5=8.7, Q100=19.6 cfs) consists of 4.98 acres of the northern half of the US HWY 24 roadway and adjoining native grass lined barrow ditch. Runoff produced within the basin combines with runoff from **DP6** at lower cumulative peak runoff rates of 9.9 and 28.0 cfs in the 5 and 100-year storm events at **DP7**. A cross section of the ditch at the **DP7** location is provided for comparison purposes and is provided in the appendix. **M&S has clarified that the UGD will be completed as part of Filing No.1.**

### **Four Step Process**

Clarify that this being done in Filing 1.

**Step 1 Employ Runoff Reduction Practices** – Approx. 2.54 acres of the proposed development is being set aside for a Full Spectrum Detention (FSD) Pond. Whenever possible, runoff produced within developable area containing impervious surfaces will be routed through landscaped areas or earthen swales (grass-lined where slope exceeds 2%) to minimize direct connection of impervious surfaces. In the interim, runoff will be reduced through the use of (4) temporary sedimentation ponds until the ground has been stabilized with vegetation or permanently developed.

Show location on plans

The locations of the TSBs (one existing from Filing No.1 and two proposed for Filing No.2) have been shown for the Filing No. 2 site plans.

**Step 2 Stabilize Drainageways** – The development will have negative effects on downstream drainage ways since flows released will be below historic rates. In the interim, the site proposes four temporary sedimentation ponds, before discharging at the southwest property corner of the site and onto an adjacent undeveloped property via riprap-lined spillways. This ensures that in this stage of the development negative effects on the downstream drainage ways will be avoided.

In the proposed and future conditions, the flow is discharged to the same location offsite through an RCP pipe outfall lined with rip rap. From here it continues southwest in CDOT's man-made roadside ditch until it reaches Peterson Road. It is then conveyed to the other side of the road, into a similar earthen channel, via a 36" CMP culvert. The drainage continues southwest in the right of way, until it reaches the East Fork Sand Creek Channel. Existing rip rap barriers are lined throughout this portion of the pathway approximately every 90-100 feet within the ditch to the channel bank. The Drainageway Exhibit provided in the Drainage Maps section of the Appendix provides a visual representation of this information. Roadside ditch calculations for various storm events are provided

for the selected suitable downstream outfall (project site's discharge location) to ensure the facility can adequately contain and convey the flows.

**Step 3 Provide Water Quality Capture Volume (WQCV)**– The site will use a Full Spectrum Detention (FSD) Pond to control developed runoff that is discharging into an existing CDOT ROW roadside ditch and ultimately into Sand Creek. The FSD pond's outlet structure will be designed to drain the water quality event storm in 40 hours, while reducing the 100 year peak discharge to approximately 90% of the predevelopment conditions.

**Step 4 Consider Need For Selecting Industrial And Commercial BMP's** – The proposed development will implement a Stormwater Management Plan including property housekeeping practices, spill containment procedures, and coverage of storage/handling areas. Specialized BMP's are not required since the vertical development of the commercial areas are unknown at this time.

### **Proposed Drainage Characteristics**

The future site will be developed into two (2) commercial lots, three (3) tracts, and two (2) private roadways. The proposed development will extend Pacific Rail Point and Central Rail Way into the site to provide access and a utility corridor to both the commercial and residential developments. At this time, it is anticipated that the development and design of Lot 1 and Lot 2 (by others) is planned to occur following the construction of the proposed utilities and infrastructure provided by this plan. A separate drainage letter or report will be required for that portion of the development.

The following summary generalizes the proposed drainage patterns and drainage improvements required to safely route developed runoff to downstream facilities.

Off-site flows within the existing Meadowbrook Parkway will be collected by a pair of sump inlets located at the west end of the roadway, then routed south to the planned off-site FSD. Pacific Rail Point(private) and Central Rail Way(private) will provide access and utility corridors for development. Private storm sewer mains, stubs, and inlets will be extended along these corridors to serve the development. The extension of these facilities beyond what is shown by this plan is likely with future development. All onsite storm sewer and drainage improvements shall be private. Storm sewer pipes and inlets will be constructed along, and tie in at the southwest boundary of the proposed Central Rail Way to aid in collecting runoff from the site. These facilities will connect at the west side of the proposed site to the planned system located east of the planned Southern Rail Point. Runoff collected by the infrastructure will be conveyed west and south, then off-site through a 36" storm pipe. Proposed on-site flows will continue off-site through planned storm pipes, where the flows will combine with adjacent lot flows and continue through planned storm pipes to the planned single full spectrum detention pond located at the west end of the site. The outfall from the pond will discharge into the existing CDOT Right of Way as per the CM

The section has been updated to include all of the requested information regarding the UGD proposed in Filing No.1 for water quality and detention.

Update entire section to discuss the proposed underground water quality system. Include information on TSS removal and/or WQCV, whichever is being used to meet WQ criteria. For TSS information make sure to include provided rate vs what is required per criteria. Include project number and name for submitted deviation request and cdr project.

## Proposed Detailed Drainage Discussion

### Design Point 1\*

Off-site **Basin E2 (Claremont Business Park Filing No.2)** consists of a reported 3.86 acres of development located along the southeastern half of existing Meadowbrook Parkway some 1200' northeast of the subject site. Runoff produced by the offsite development (CBPF2 Lot 46) is conveyed to Meadowbrook Parkway at flow rates of  $Q5=15.1$  and  $Q100=28.6$  cfs in the 5 and 100-year storm events respectively. The collected flows combine with runoff from **Basin EX-A2 (Lot 1 24/94 Business Park Filing No.1)** ( $Q5=2.5$ ,  $Q100=4.5$  cfs) which consists of 0.59 acres of the southeastern half of Meadowbrook Parkway located immediately east of existing Newt Drive. The collected flows from the two basins culminate at **Design Point 1** at peak rates of  $Q5=14.2$  and  $Q100=26.5$  cfs. An existing 10' CDOT Type R at-grade inlet (**Inlet 1**) intercepts flows of  $Q5=8.4$  and  $Q100=11.1$  cfs, with subsequent by-pass flows of 5.8 and 15.4 cfs in the 5 and 100 year events. Surface flows continue west within the south half of existing Meadowbrook Parkway. Flows at **DP1** are consistent with planned flows at this location from the CMU1 MDDP.

### Design Point 2\*

Off-site **Basin OS-A (Meadowbrook Crossing Filing 1 and 2)** consists of 1.29 acres of the northern half of existing Meadowbrook Parkway located immediately east of existing Newt Drive. Runoff produced within this basin totals  $Q5=3.1$  and  $Q100=6.0$  cfs. An existing 10' CDOT Type R at grade inlet (**Inlet 2**) collects runoff of  $Q5=3.1$  and  $Q100=5.3$  cfs, with subsequent by-pass flows in only the 100 year event of 0.7 cfs. Runoff leaving the design point continuing west within the north half of existing Meadowbrook Parkway. Flows at **DP2** are consistent with planned flows at this location from the CMU1 MDDP.

### Design Point 3\*

In accordance with the assumptions outlined within the Meadowbrook Subdivision Final Drainage Report, an offsite public storm sewer pipe and inlet will be constructed at the southwest corner of the proposed roundabout to aid in collecting runoff from a portion of the offsite watershed located to the east of the site. A new manhole is not anticipated to be required to connect the outfall to the existing pipe located inside the existing Meadowbrook Subdivision. As this area is already paved, increases to the imperviousness of this area are not anticipated.

Off-site **Basin OS-1** consists of approximately 1.40 acres of existing Newt Drive that will be retrofitted with new raised median as part of an intersection conversion to a roundabout. Runoff produced within the basin ( $Q5=6.4$  and  $Q100=11.5$  cfs) will combine with flow-by from **DP1** at peak rates of  $Q5=10.2$  and  $Q100=23.3$  cfs at a proposed public 10' at-grade inlet (**Inlet 3**:  $Q5=6.7$ ,  $Q100=9.8$  cfs intercepted;  $Q5=3.5$ ,  $Q100=13.5$  cfs flowby) located at **DP3**. A proposed public 24" storm sewer (**PR1**) will convey water across the intersection to the existing 42" storm sewer with Meadowbrook Crossings in accordance with that subdivision's drainage report. The existing manhole connection has been determined to be sufficient following construction of this proposed inlet and storm sewer. It is important to note that this connection also remains feasible as the roundabout is not anticipated to significantly increase the overall imperviousness of the area above that of the existing condition. Runoff in excess of the inlet capacity will continue westward via the

curb and gutter of existing Meadowbrook Parkway. Flows at **DP3** are consistent with planned flows at this location from the CMU1 MDDP.

#### **Design Point 4\***

Off-site **Basin A** consists of 1.67 acres of the north half of existing Meadowbrook Parkway. Runoff within this basin ( $Q_5=6.5$  and  $Q_{100}=11.6$  cfs) combines with flow by from **DP2** for total flows of 6.5 and 12.4 cfs in the 5 year and 100 year events, respectively. A proposed 15' at-grade inlet (**Inlet 4:**  $Q_5=6.5$ ,  $Q_{100}=10.6$  cfs intercepted;  $Q_5=0.0$ ,  $Q_{100}=1.8$  cfs flowby) is located at the west end of the roadway just before the proposed temporary cul-de-sac. This inlet conveys intercepted flows to **PR1.5**, a proposed 24" RCP public storm sewer. Flowby from the 100 year event continues west to downstream infrastructure. Flows at **DP4** are consistent with planned flows at this location from the CMU1 MDDP.

#### **Design Point 4.5\***

1.8 cfs of flowby in the 100 year event continues west from **DP4** towards off-site **Inlet 4.5**, a **NEENAH R-2501 Type C Grate** lid and frame at the low point of the cul-de-sac. Supporting calculations for this non-standard inlet are provided in the Appendix. This inlet is anticipated to reach a maximum depth of 0.5' in order to convey this flow underneath the roadway via a proposed public 24" storm sewer (**PR2**). The NEENAH inlet is to be removed and replaced with a standard CDOT 5' Type R inlet when the roadway cul de sac is removed and the roadway is extended to the west with future development. In the case of inlet clogging, overflow will collect at **DP5**, which has an additional 13.3 cfs capacity. Flows at **DP4.5** are consistent with planned flows at this location from the CMU1 MDDP.

#### **Design Point 5\***

Off-site **Basin B** consists of 1.48 acres of the southern half of existing Meadowbrook Parkway. Runoff produced within this basin ( $Q_5=5.8$  and  $Q_{100}=10.3$  cfs) combines with flow-by leaving **DP3** at peak flowrates of  $Q_5=9.9$ ,  $Q_{100}=25.8$  cfs. A proposed public 15' sump inlet (**Inlet 5:**  $Q_5=10.1$ ,  $Q_{100}=26.3$  cfs intercepted; no flowby) located at west end of the roadway will prevent developed flows from leaving exiting the roadway corridor. The intercepted runoff will combine with **PR2** flows in a 36" private storm sewer system (**PR3, by others**). Combined flows within the planned system are calculated to reach peak rates of 16.5 and 38.4 cfs. The storm sewer system is to be planned by others through the multi-family site (Lot 11) but ultimately will tie back into the system at **DP15**. In case of inlet clogging, overflows will overtop the curb on the southern side onto the apartment site and be conveyed to the swale on the west side of the site. Flows at **DP5** are consistent with planned flows at this location from the CMU1 MDDP.

#### **Design Point 6**

**Basin C** ( $Q_5=9.3$ ,  $Q_{100}=17.4$  cfs) consists of 2.36 acres of the northern portion of commercial Tract C located along the east side of the site. A proposed private 30" storm sewer (**PR4**) is provided to collect and convey flows of  $Q_5=9.3$  and  $Q_{100}=17.4$  cfs in the 5 and 100-year storm event, respectively. Intercepted flows are conveyed west underground within the roadway tract. **PR4** was treated as a flared end pipe for rational method calculation purposes, to account for future development.



### **Design Point 6.5**

**Basin C1** ( $Q_5=9.3$ ,  $Q_{100}=17.4$  cfs) consists of 2.19 acres of the southern portion of commercial Tract C located along the east side of the site. A proposed private 30" storm sewer (**PR4.5**) is provided to collect and convey flows of  $Q_5=9.3$  and  $Q_{100}=17.4$  cfs in the 5 and 100-year storm event, respectively. Intercepted flows from **PR4** and **PR4.5** are conveyed west underground within the roadway tract through **PR5-PR7** at flow rates of  $Q_5=18.7$  and  $Q_{100}=34.7$  cfs.

### **Design Point 7**

**Basin D** consists of 2.21 acres of commercial Tract B located between existing Meadowbrook Parkway, proposed Central Rail Way, proposed Pacific Rail Point, and planned Southern Rail Point. **Basin D**, which includes portions of Lots 9 and 10, will require a private 24" storm drain (**PR8**) to collect peak flows of  $Q_5=9.3$  and  $Q_{100}=16.9$  cfs from this basin in the 5 and 100 year storm events, respectively.

### **Design Point 8**

**Basin E** ( $Q_5=3.3$ ,  $Q_{100}=6.0$  cfs) consists of 0.84 acres of a portion of commercial lots, the northern half of proposed Central Rail Way and the western half of proposed Pacific Rail Point. A private 10' CDOT Type R at-grade inlet (**Inlet 6**:  $Q_5=4.0$ ,  $Q_{100}=6.0$  cfs intercepted;  $Q_5=0.0$ ,  $Q_{100}=0.0$  cfs flowby in proposed conditions) is located on the north side of the roadway to intercept flows. Runoff bypassing this inlet continues to downstream infrastructure. Flows collected from the inlet combine with **PR8** and are conveyed to a box base manhole in the center of the proposed Central Rail Way via a proposed private 30" (**PR9**) storm drain at flow rates of  $Q_5=12.4$  and  $Q_{100}=21.4$  cfs. Within the manhole, flows from **PR9** then combine with flows from **PR7** and continue to flow through a proposed private 36" (**PR10**) storm drain at flow rates of  $Q_5=29.5$  and  $Q_{100}=53.0$  cfs.

### **Design Point 9**

**Basin E1** ( $Q_5=6.3$ ,  $Q_{100}=11.4$  cfs) consists of 1.62 acres of commercial lots, the southern half of Central Rail Way, and the eastern half of Pacific Rail Point. A private 10' CDOT Type R at-grade inlet (**Inlet 7**:  $Q_5=5.5$ ,  $Q_{100}=7.7$  cfs intercepted;  $Q_5=0.8$ ,  $Q_{100}=3.7$  cfs flowby) is located on the south side of the Central Rail Way to intercept flows. Runoff bypassing this inlet continues to downstream infrastructure. Flows collected from the inlet combine with flows from (**PR10**) and are conveyed south to a box base manhole on the south side of the roadway via a private 36" (**PR11**) storm drain and continue west underground at flow rates of  $Q_5=35.0$  and  $Q_{100}=60.7$  cfs. **PR12**, a planned 42" private storm sewer, then directs the system south from another manhole. Pipe flows at  $Q_5=6.9$  and  $Q_{100}=13.8$  cfs from the neighboring planned apartment site (**PR11.5**, private 24" RCP) combine with flows from **PR12** in a planned private 48" storm drain (**PR12.5**) at flow rates of  $Q_5=43.2$  and  $Q_{100}=77.4$  cfs. The proposed flows exiting the site through **PR11** are 0.1 and 0.3 cfs less than the planned flows from the CMU1 MDDP for the 5 and 100-year events, respectively.

### **Design Point 10\***

Off-site **Basin G** ( $Q_5=2.1$ ,  $Q_{100}=3.8$  cfs) consists of 0.46 acres of multi-family lots and roadway located southwest of the proposed site at the southwest edge of planned Southern Rail Point. A private 10' CDOT Type R sump inlet (**Inlet 8**:  $Q_5=2.1$ ,  $Q_{100}=3.8$  cfs; no flowby) located on the west side of the street functions to collect the runoff from **Basin G**. **PR13**, a proposed 18" private storm sewer, will direct runoff east to a box base manhole at peak flow rates of 2.1 cfs and 3.8 cfs in

the minor and major storm events, respectively. In the case of inlet clogging, overflow is directed to the swale at **DP13**. Flows at **DP10** are consistent with planned flows at this location from the CMU1 MDDP.

#### **Design Point 11\***

Off-site **Basin G1** ( $Q_5=2.7$ ,  $Q_{100}=4.9$  cfs) consists of 0.59 acres of commercial lots and roadway located southwest of the proposed site at the southeast edge of planned Southern Rail Point. A private 15' CDOT Type R sump inlet (**Inlet 9**:  $Q_5=3.5$ ,  $Q_{100}=8.7$  cfs intercepted; no flowby), located on the east side of planned Southern Rail Point to collect the runoff from **Basin G1** as well as bypass flows from **DP8** and **DP9**, totaling  $Q_5=3.5$  and  $Q_{100}=8.7$  cfs. **PR14**, a proposed 30" private storm sewer, will direct runoff west to an underground box base manhole at peak flow rates of 3.5 cfs and 8.7 cfs in the minor and major storm events, respectively. From the junction, flows from **PR12.5**, **PR13**, and **PR14** combine at **PR15** ( $Q_5=47.7$ ,  $Q_{100}=87.7$  cfs), a 48" private storm sewer, and are directed south. In the case of inlet clogging, overflows will overtop the curb and collect in the rip rap protected depression at **DP12**.

#### **Design Point 12\***

**Basin F** consists of 2.72 acres of on-site commercial lots (Lot 1 and portions of Lot 2) located along the southwestern boundary of the site. A private planned 24" storm drain (**PR16**) is provided to collect the basin flows of  $Q_5=11.4$  and  $Q_{100}=20.8$  cfs at **DP12** in the 5 and 100 year events, respectively. Intercepted flows are conveyed west underground to the main line where they combine with flows from **PR15** at a manhole junction. **PR17**, a private 48" RCP storm sewer directs the collected runoff at rates of  $Q_5=57.3$  and  $Q_{100}=105.1$  cfs to a manhole which joins with a private 30" RCP, **PR21** ( $Q_5=2.1$ ,  $Q_{100}=4.2$ ) at combined peak flow rates of  $Q_5=58.2$  and  $Q_{100}=107.3$  cfs. The collected flows are conveyed southwest via **PR18** (Private 48" RCP) until discharging into the planned forebay at **DP15**. Flows at **DP12** are greater than planned flows at this location from the CMU1 MDDP.

#### **Design Point 13\***

Off-site **DP13** consists of a 2' bottom earthen swale that is designed to convey overflow runoff from the planned apartment complex site, west of the proposed site (**Basin A-5 Overflow**:  $Q_5=0.9$ ,  $Q_{100}=7.8$  cfs, **Basin Z-1**:  $Q_5=0.47$ ,  $Q_{100}=1.27$  cfs, and **Basin D-1 Overflow**:  $Q_5=0.0$ ,  $Q_{100}=1.5$  cfs) to the northwest corner of the pond. This swale joins another on the west end of the property (**DP14**) that ultimately conveys flows into the pond. Overflows from the apartment site were obtained by using flowby from the "Final Drainage Report for Aura at Crossroads" MHFD inlet sheets, which are provided in the appendix. The maximum runoff expected at **DP13** is 1.3 and 10.9 cfs in the 5 and 100 year events, respectively.

#### **Design Point 14\***

Off-site **DP14** represents the v-shaped, earthen swale located west of the proposed site that collects flows not anticipated to be collected by the planned apartment site's storm sewer (**Basin Z-2**:  $Q_5=0.57$ ,  $Q_{100}=1.43$  cfs), and combines with flows from **Design Point 13**. Runoff collected within this swale (maximum  $Q_5=2.0$  cfs,  $Q_{100}=9.7$  cfs) is conveyed from north to south to the planned FSD pond at **DP15**. Calculations for this swale before (Section B-B') and after (Section D-D') the junction are provided in the appendix of this report. Anticipated flows for **Basin Z-2**

from “Final Drainage Report for Aura at Crossroads” were used to determine swale cross section prior to the junction location, and combined flows with **DP13** were used for after. North American Green SC-250 erosion control blanketing or approved equal shall be used as swale protection and was selected based on flow velocity.

#### **Design Point 15\***

Off-site **Basin J** consists of 3.21 acres of the planned Tract for the full spectrum detention pond located southwest of the proposed site. Runoff produced within this basin reaches peak runoff rates ( $Q_5=2.3$  and  $Q_{100}=10.0$  cfs) combines with flows from **DP14** and **PR18** (planned 48” private RCP) in the pond. **PR19** (planned 48” private RCP) represents the tie in point for the apartment site storm sewer, and conveys collected flows into the planned forebay. The cumulative flows at **FSD Pond 1** are  $Q_5=117.0$  and  $Q_{100}=229.7$  cfs. Flow exiting the pond will be routed to the existing 5’ bottom earthen swale (Planned Section A-A’ Analyses) in CDOT’s Right of Way at **DP16** via 18” private **PR20** ( $Q_5=1.2$  and  $Q_{100}=11.4$  cfs). A rip rap pad (Type L,  $D_{50}=9$ ”) is provided as outlet protection. Flows at **DP15** are 0.3 cfs greater and 7.3 cfs less than the planned flows at this location from the CMU1 MDDP for the 5 and 100-year events, respectively.

#### **Design Point 16\***

Off-site **Basin OS-2** consists of 4.98 acres. Approximately half of this basin is comprised of the paved surface of U.S. Highway 24, while the other half is comprised of the 5 foot bottom earthen swale in CDOT’s Right of Way. Runoff produced within this basin ( $Q_5=8.7$  and  $Q_{100}=19.6$  cfs) flows from northeast to southwest, combining with outfall flows from **DP15**. This combination of runoff collects in the existing swale in the right of way. According to the CMU1 MDDP, the pond releases flows at  $Q_5=1.2$ ,  $Q_{100}=11.4$  cfs. Thus, the cumulative flows at **DP16** are the same as the planned flows in the CMU1 MDDP at  $Q_5=9.9$  and  $Q_{100}=31.0$  cfs. Flows from this design point continue to downstream infrastructure.

\*See Crossroads Mixed Use Filing No.1 FDR/MDDP (“CMU1 MDDP”) by M&S Civil Consultants, Inc. dated February 2022, in the appendix for predevelopment, historic, and future condition comparison for the intermediate events at these locations.

#### **Water Quality Provisions and Maintenance**

See comment on step #3 on four step process and update this narrative accordingly to include system being used and maintenance of BMP.

The off-site planned full spectrum detention (FSD) pond functions to provide detention and water quality for the proposed development. Refer to the CMU1 calculations regarding this planned full spectrum detention

This section has been updated for the use of the new BMP (UGD) from Filing No.1.

#### **Erosion Control**

It is the policy of the El Paso County that M&S Civil Consultants submit a grading and erosion control plan with the drainage report. The plan includes proposed silt fence and vehicle tracking control as proposed erosion control measures. The plan also includes provisions for stockpiling, staging, and concrete washout areas. A stormwater management plan is provided to accompany the plans.

Include a breakdown of tract d impervious values in the appendix with the rest of the calculations.

Update percent impervious to be specific to this filing.

Update to use 2023 drainage and bridge fees.

All drainage fees were paid at the time of platting, therefore, no drainage fees are due at this time. The text has been updated to reflect this new information.

**Drainage & Bridge Fees:**

12.016	x	78.67%	x	\$21,814.00	=	\$ 206,207.46
		78.67%	x	\$8,923.00	=	\$ 84,349.01
<b>Total</b>						<b>\$ 290,556.47</b>

time of platting. Future development of these lots shall require

Add in this narrative that tracts B and C will not be included in the drainage fee and will be assessed in the future.

**Cost Estimate (Non**

Item	Amount	Unit	U
10' CDOT Type R Inlet	2	EA	\$ 9,89
Type I MH	4	EA	\$ 9,80
Type II MH	1	EA	\$ 6,00
24" SD	23	LF	\$ 8
30" SD	546	LF	\$ 10
36" SD	12	LF	\$ 12
<b>TOTAL COST:</b>			<b>\$ 122,916.00</b>

This is the drainage report for all commercial sites within the (12 acre) Filing No. 2 boundary (tracts A, B, C, Lots 1 and 2). Therefore, all sites within the boundary of Filing No.2 are included in the drainage fee that has already been paid.

M & S Civil Consultants, Inc. (M & S) cannot and does not guarantee the construction cost will not vary from these opinions of probable costs. These opinions represent our best judgment as design professionals familiar with the construction industry and this development in particular. The above is only an estimate of the facility cost and drainage basin fee amounts in 2022.

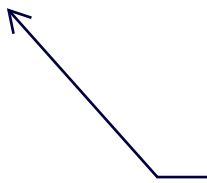
**Summary:**

The construction of this site is for the purposes of creating a commercial site (Lots 1, 2, Tract A, Tract B and Tract C) in the proposed condition. The site will be graded and all disturbed areas will be seeded. Proposed post construction runoff will be discharged from the site at **DP9** and **DP12**. At **DP9**, the proposed runoff is 0.1 and 0.3 cfs less than the planned runoff from the CMU1 MDDP for the 5 and 100-year events, respectively. At **DP12**, the proposed runoff is 0.6 and 1.2 cfs greater than the planned runoff from the CMU1 MDDP for the 5 and 100-year events, respectively. This difference is due to the area adjustment of **Basin F** from the planned CMU1 MDDP to this site's drainage report. Though there is an increase in proposed runoff from **DP12**, the amount of runoff that reaches the planned FSD from adjacent lots and the proposed site is 0.3 cfs greater and 7.3 cfs less than the planned flows at this location from the CMU1 MDDP for the 5 and 100-year events, respectively. Thus, the runoff from the proposed site does not affect the size of the planned FSD. Proposed post construction runoff will be discharged from the pond at rates that are 2.0 cfs greater in the 100-year event than existing discharge rates, but are equal to the planned discharge rates for the 5 and 100 year design events from the CMU1 MDDP. Thus, the development of the proposed site will not further impact the flows that are planned to be released from the planned FSD in the CMU1 MDDP (see appendix).

The construction of Crossroads Mixed Use Filing No. 2 shall not adversely affect adjacent or downstream property. Subsequent drainage reports will be required when the site is developed further than the uses defined within this report.

## References

- 1.) "El Paso County and City of Colorado Springs Drainage Criteria Manual".
- 2.) "Urban Storm Drainage Criteria Manual"
- 3.) SCS Soils Map for El Paso County.
- 4.) Flood Insurance Rate Map (FIRM), Federal Emergency Management Agency, Revised date December 7<sup>th</sup>, 2018.
- 5.) "Final Drainage Report for Claremont Business Park Filing No. 2", dated November 2006, by Matrix Design Group, Inc.
- 6.) "Preliminary and Final Drainage Report Meadowbrook Crossing Filing 1 and Filing 2", dated July 25, 2017, by Kiowa Engineering Corporation.
- 7.) "Final Drainage Report Lot 1 24/94 Business Park Filing No. 1 on Platte Avenue and Meadowbrook Parkway", dated April 28, 2016 and revised July 14, 2016, by Core Engineering Group, LLC.
- 8.) "Final Drainage Report for Meadowbrook Dirt Borrow Site ", dated November 2018, by M&S Civil Consultants, Inc.
- 9.) "Sand Creek Drainage Basin Planning Study", revised March 1996, by Kiowa Engineering Corporation.
- 10.) "Final Drainage Report for Aura at Crossroads", dated April 4<sup>th</sup>, 2022, by Harris Kocher Smith.
- 11.) "Final Drainage Report for Crossroads Mixed Use Filing No.1", dated February 2022, by M&S Civil Consultants, Inc.



Add a reference to  
the Drainage Letter  
for the Underground  
Detention per (PCD  
File No CDR232)

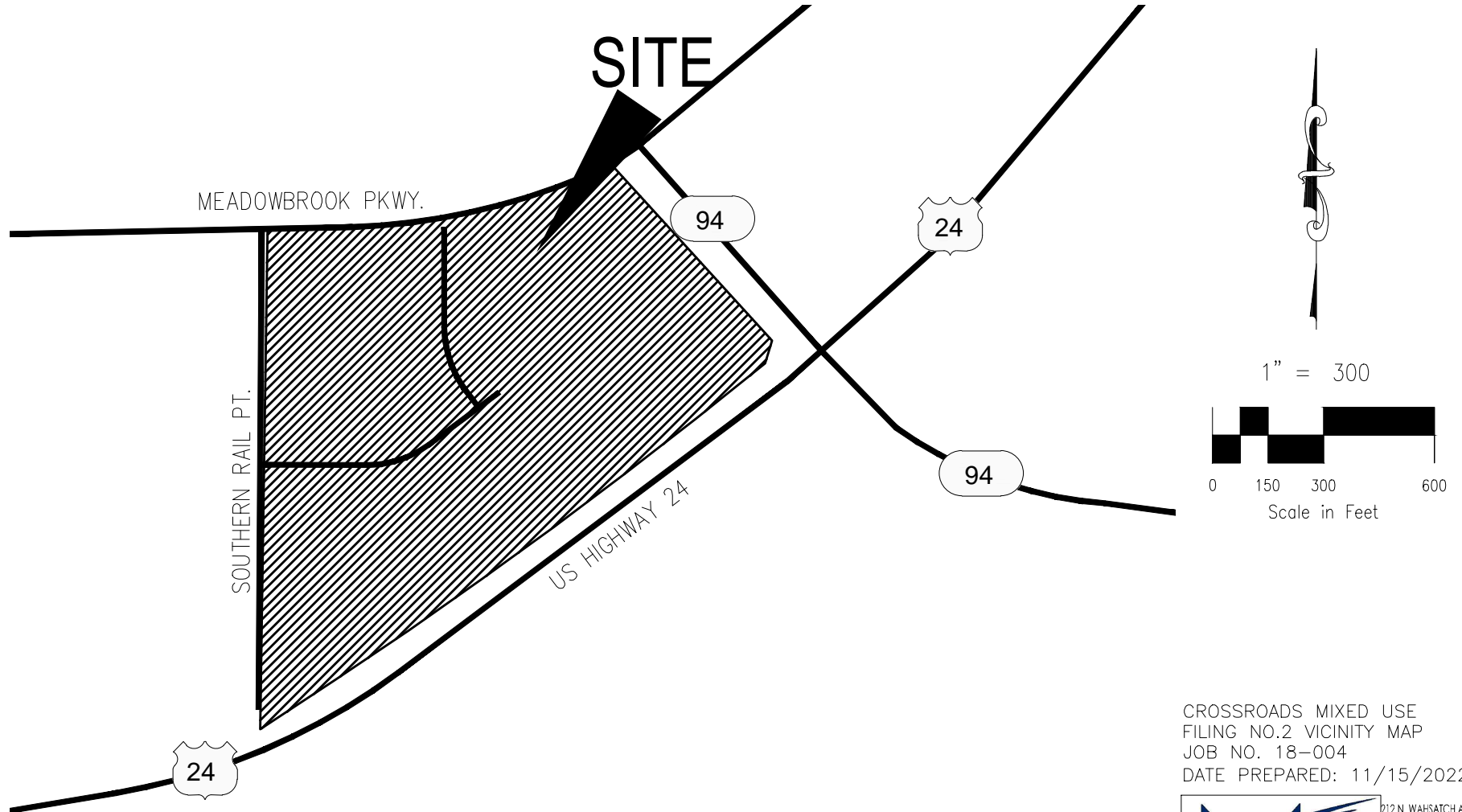
This reference was added to the report.

## **APPENDIX**

## **VICINITY MAP**

# VICINITY MAP

CROSSROADS MIXED USE FILING NO.2



CROSSROADS MIXED USE  
FILING NO.2 VICINITY MAP  
JOB NO. 18-004  
DATE PREPARED: 11/15/2022



212 N. WAHSATCH AVE., STE 305  
COLORADO SPRINGS, CO 80903  
PHONE: 719.955.5485

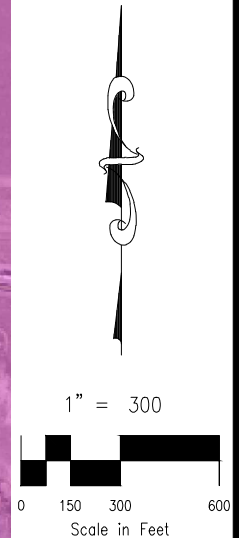
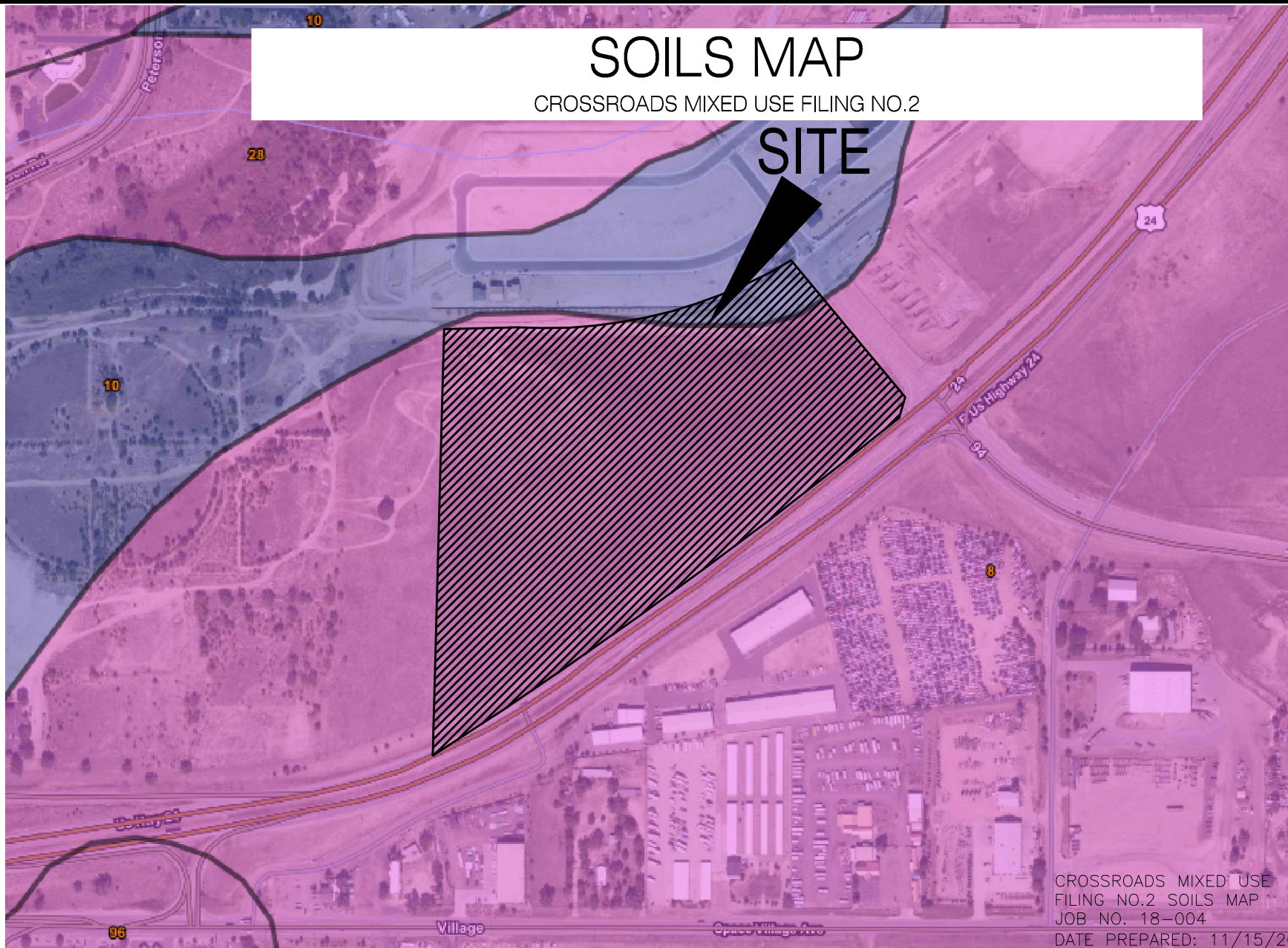


## **SOILS MAP**

# SOILS MAP

CROSSROADS MIXED USE FILING NO.2

SITE



CROSSROADS MIXED USE  
FILING NO.2 SOILS MAP  
JOB NO. 18-004  
DATE PREPARED: 11/15/2022

Summary by Map Unit — El Paso County Area, Colorado (CO625)				
Map unit symbol	Map unit name	Rating	Acres in AOI	Percent of AOI
8	Blakeland loamy sand, 1 to 9 percent slopes	A	282.3	73.2%
10	Blendon sandy loam, 0 to 3 percent slopes	B	54.2	14.1%
28	Ellcott loamy coarse sand, 0 to 5 percent slopes	A	40.7	10.6%
70	Pits, gravel	A	0.2	0.1%
96	Truckton sandy loam, 0 to 3 percent slopes	A	8.1	2.1%
<b>Totals for Area of Interest</b>			<b>385.6</b>	<b>100.0%</b>



212 N. WAHSATCH AVE., STE 305  
COLORADO SPRINGS, CO 80903  
PHONE: 719.955.5485

## **FIRM PANELS**



# FLOODPLAIN MAP

CROSSROADS MIXED USE FILING NO. 2

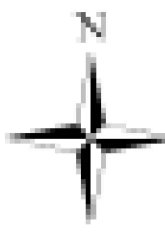


0 250 500 1,000 1,500 2,000 Feet  
1:6,000  
Basemap: USGS National Map: Orthoimagery: Data refreshed October, 2020  
104°41'24"W 38°50'20"N

## Legend

SEE FIS REPORT FOR DETAILED LEGEND AND INDEX MAP FOR FIRM PANEL LAYOUT

SPECIAL FLOOD HAZARD AREAS		Without Base Flood Elevation (BFE) Zone A, V, A99
		With BFE or Depth Zone AE, AO, AH, VE, AR
		Regulatory Floodway
OTHER AREAS OF FLOOD HAZARD		0.2% Annual Chance Flood Hazard, Areas of 1% annual chance flood with average depth less than one foot or with drainage areas of less than one square mile Zone X
		Future Conditions 1% Annual Chance Flood Hazard Zone X
		Area with Reduced Flood Risk due to Levee. See Notes. Zone X
		Area with Flood Risk due to Levee Zone D
OTHER AREAS		NO SCREEN Area of Minimal Flood Hazard Zone X
		Effective LOMRs
		Area of Undetermined Flood Hazard Zone D
GENERAL STRUCTURES		Channel, Culvert, or Storm Sewer
		Levee, Dike, or Floodwall
OTHER FEATURES		20.2 Cross Sections with 1% Annual Chance Water Surface Elevation
		17.5 Cross Sections with 1% Annual Chance Water Surface Elevation
		Coastal Transect
		Base Flood Elevation Line (BFE)
		Limit of Study
		Jurisdiction Boundary
MAP PANELS		Coastal Transect Baseline
		Profile Baseline
		Hydrographic Feature
		Digital Data Available
		No Digital Data Available
		Unmapped



The pin displayed on the map is an approximate point selected by the user and does not represent an authoritative property location.

CROSSROADS MIXED USE  
FILING NO. 2 FLOODPLAIN MAP  
FLOODPLAIN MAP  
JOB NO. 18-004  
DATE PREPARED: 11/15/2022



212 N. WAHSATCH AVE., STE 305  
COLORADO SPRINGS, CO 80903  
PHONE: 719.955.5485



## **HYDROLOGIC CALCULATIONS**

***Crossroads Mixed Use Filing No. 2***  
***FINAL DRAINAGE REPORT***  
***(Existing Area Runoff Coefficient Summary)***

			<b><i>STREETS / DEVELOPED</i></b>			<b><i>OVERLAND / DEVELOPED</i></b>			<b><i>WEIGHTED</i></b>	
<b>BASIN</b>	<b>TOTAL AREA (SF)</b>	<b>TOTAL AREA (Acres)</b>	<b>AREA (Acres)</b>	<b>C<sub>5</sub></b>	<b>C<sub>100</sub></b>	<b>AREA (Acres)</b>	<b>C<sub>5</sub></b>	<b>C<sub>100</sub></b>	<b>C<sub>5</sub></b>	<b>C<sub>100</sub></b>
<b><i>C</i></b>	173960	3.99	0.00	0.90	0.96	5.89	0.08	0.35	<b><i>0.08</i></b>	<b><i>0.35</i></b>
<b><i>A</i></b>	480166.8	11.02	0.00	0.90	0.96	11.02	0.08	0.35	<b><i>0.08</i></b>	<b><i>0.35</i></b>
<b><i>B</i></b>	754121.6	17.31	0.00	0.90	0.96	17.31	0.08	0.35	<b><i>0.08</i></b>	<b><i>0.35</i></b>
<b><i>OS-1</i></b>	55560.16	1.28	1.28	0.90	0.96	0.00	0.08	0.35	<b><i>0.90</i></b>	<b><i>0.96</i></b>
<b><i>OS-2</i></b>	216993.7	4.98	2.49	0.90	0.96	2.49	0.08	0.35	<b><i>0.49</i></b>	<b><i>0.66</i></b>
<b><i>EX-A2***</i></b>		0.59	0.59	0.90	0.96	0.00	0.08	0.35	<b><i>0.90</i></b>	<b><i>0.96</i></b>
<b><i>OS-A**</i></b>		1.29	1.29	0.62	0.72	0.00	0.08	0.35	<b><i>0.62</i></b>	<b><i>0.72</i></b>
<b><i>E2*</i></b>		3.86	3.86	0.80	0.90	0.00	0.08	0.35	<b><i>0.80</i></b>	<b><i>0.90</i></b>

\*FROM FDR FOR CLAREMONT BUSINESS PARK FILING NO. 2

\*\*FROM TO FDR MEADOWBROOK CROSSING FILING 1 AND FILING 2

\*\*\*FROM FDR LOT 1 24/94 BUSINESS PARK FILING NO. 1 ON PLATTE AVENUE AND MEADOWBROOK PARKWAY

# Crossroads Mixed Use Filing No. 2

## FINAL DRAINAGE REPORT

### (Existing Area Drainage Summary)

From Area Runoff Coefficient Summary				OVERLAND				STREET / CHANNEL FLOW				Time of Travel ( $T_t$ )		INTENSITY ^		TOTAL FLOWS	
BASIN	AREA TOTAL (Acres)	C <sub>5</sub>	C <sub>100</sub>	C <sub>5</sub>	Length	Height	T <sub>C</sub>	Length	Slope	Velocity	T <sub>t</sub>	TOTAL	CHECK	I <sub>5</sub>	I <sub>100</sub>	Q <sub>5</sub>	Q <sub>100</sub>
		From DCM Table 5-1			(ft)	(ft)	(min)	(ft)	(%)	(fps)	(min)	(min)	(min)	(in/hr)	(in/hr)	(c.f.s.)	(c.f.s.)
<i>C</i>	3.99	0.08	0.35	0.08	120	2.8	15.3	555	1.5%	0.9	10.6	25.9	13.8	2.7	4.5	0.9	6.3
<i>A</i>	11.02	0.08	0.35	0.08	165	8	13.8	1730	1.3%	0.8	36.3	50.1	20.5	1.7	2.9	1.5	11.1
<i>B</i>	17.31	0.08	0.35	0.08	300	3	30.9	1390	1.2%	0.8	29.7	60.6	19.4	1.4	2.4	2.0	14.5
<i>OS-1</i>	1.28	0.90	0.96	0.90	100	3	2.5	490	2.2%	3.0	2.8	5.3	13.3	5.1	8.5	5.8	10.5
<i>OS-2</i>	4.98	0.49	0.66	0.49	85	8	4.8	1165	1.8%	2.0	9.6	14.5	16.9	3.6	6.0	8.7	19.6
<i>EX-A2***</i>	0.59	0.90	0.96	0.90	10	0.2	0.9	916	1.9%	2.7	5.6	6.5	15.1	4.8	8.0	2.5	4.5
<i>OS-A**</i>	1.29	0.62	0.72	0.62	40	0.8	4.4	1310	1.9%	2.8	7.9	12.3	17.5	3.8	6.4	3.1	6.0
<i>E2*</i>	3.86	0.80	0.90	0.80	50	1	3.0	400	1.3%	2.3	2.9	6.0	12.5	4.9	8.2	15.1	28.6

^ Intensity equations assume a minimum travel time of 5 minutes.

Calculated by: CVW

Date: 1/31/2022

Checked by: DLM

\*VALUES DERIVED USING DATA FROM FDR FOR CLAREMONT BUSINESS PARK FILING NO. 2

\*\*VALUES DERIVED USING DATA FROM FDR FOR MEADOWBROOK CROSSING FILING 1 AND FILING 2 PAGE 31

\*\*\*VALUES DERIVED USING DATA FROM FDR FOR LOT 1 24/94 BUSINESS PARK FILING NO. 1 ON PLATTE AVENUE AND MEADOWBROOK PARKWAY

# Crossroads Mixed Use Filing No. 2

## FINAL DRAINAGE REPORT

### (Existing Basin Routing Summary)

From Area Runoff Coefficient Summary				OVERLAND				PIPE / CHANNEL FLOW				Time of Travel (T <sub>t</sub> )	INTENSITY *		TOTAL FLOWS		COMMENTS
DESIGN POINT	CONTRIBUTING BASINS	CA <sub>5</sub>	CA <sub>100</sub>	C <sub>s</sub>	Length (ft)	Height (ft)	T <sub>c</sub> (min)	Length (ft)	Slope (%)	Velocity (fps)	T <sub>t</sub> (min)	TOTAL (min)	I <sub>5</sub> (in/hr)	I <sub>100</sub> (in/hr)	Q <sub>5</sub> (c.f.s.)	Q <sub>100</sub> (c.f.s.)	
1	E2 EX-A2	3.09	3.47				6.0	916	1.9%	2.7	5.6	11.6	3.9	6.6	14.2	26.5	EXISTING 10' CDOT TYPE R AT GRADE INLET
		0.53	0.57														
		3.62	4.04	Tc for E2 Used													
2	OS-A	0.80	0.93									12.3	3.8	6.4	3.1	6.0	EXISTING 10' CDOT TYPE R AT GRADE INLET
				See Area Drainage Sheet for Input													
3	OS-1 FB-DP1	1.15	1.22				11.6	150	1.0%	2.0	1.3	12.8	3.8	6.3	9.8	22.5	END OF PAVEMENT
		1.47	2.35														
		2.62	3.57	Tc for DP1 Used													
4	A FB-DP2 DP3	0.88	3.86				12.8	1470	1.6%	0.9	28.0	40.8	2.0	3.4	7.1	25.5	ADJACENT PARCEL (LOT 1)
		0.00	0.10														
		2.62	3.57														
		3.50	7.54	Tc for DP3 Used													ADJACENT PARCEL (LOT 1)
5	B	1.38	6.06									60.6	1.4	2.4	2.0	14.5	ADJACENT PARCEL (LOT 2)
				See Area Drainage Sheet for Input													
6	C	0.32	1.40									25.9	2.7	4.5	0.9	6.3	DISCHARGE TO CDOT ROW
				See Area Drainage Sheet for Input													
7	OS2 DP6	2.44	3.26									14.5	3.6	6.0	9.9	28.0	BARROW DITCH SW CORNER OF SITE/CDOT ROW
		0.32	1.40														
		2.76	4.66	Tc for OS2 Used													

Calculated by: CVW  
Date: 1/31/2022  
Checked by: DLM



**CROSSROADS MIXED USE FILING NO. 2**  
**FINAL DRAINAGE CALCULATIONS**  
**(Proposed Area Runoff Coefficient Summary)**

			STREETS / COMMERC.			MULTI-FAMILY/PARKLAND			OVERLAND / UNDEVELOPED			WEIGHTED	
BASIN	TOTAL AREA (Sq Ft)	TOTAL AREA (Acres)	AREA (Acres)	C <sub>5</sub>	C <sub>100</sub>	AREA (Acres)	C <sub>5</sub>	C <sub>100</sub>	AREA (Acres)	C <sub>5</sub>	C <sub>100</sub>	C <sub>5</sub>	C <sub>100</sub>
<b>PROPOSED BASINS</b>													
<i>OS-A**</i>		1.29	1.29	0.62	0.72	0.00	0.49	0.62	0.00	0.08	0.35	<i>0.62</i>	<i>0.72</i>
<i>E2*</i>		3.86	3.86	0.80	0.90	0.00	0.49	0.62	0.00	0.08	0.35	<i>0.80</i>	<i>0.90</i>
<i>EX-A2***</i>		0.59	0.59	0.90	0.96	0.00	0.49	0.62	0.00	0.08	0.35	<i>0.90</i>	<i>0.96</i>
<i>OS-1</i>	<i>60793.3017</i>	1.40	1.40	0.90	0.96	0.00	0.49	0.62	0.00	0.08	0.35	<i>0.90</i>	<i>0.96</i>
<i>OS-2</i>	<i>217071.1816</i>	4.98	2.49	0.90	0.96	0.00	0.49	0.62	2.49	0.08	0.35	<i>0.49</i>	<i>0.66</i>
<i>A</i>	<i>72787.0873</i>	1.67	1.67	0.90	0.96	0.00	0.49	0.62	0.00	0.08	0.35	<i>0.90</i>	<i>0.96</i>
<i>B</i>	<i>64538.8381</i>	1.48	1.48	0.90	0.96	0.00	0.49	0.62	0.00	0.08	0.35	<i>0.90</i>	<i>0.96</i>
<i>C</i>	<i>102868.78</i>	2.36	2.22	0.81	0.88	0.00	0.49	0.62	0.15	0.08	0.35	<i>0.76</i>	<i>0.85</i>
<i>D</i>	<i>96317.6781</i>	2.21	2.21	0.81	0.88	0.00	0.49	0.62	0.00	0.08	0.35	<i>0.81</i>	<i>0.88</i>
<i>E</i>	<i>36526.0967</i>	0.84	0.24	0.90	0.96	0.60	0.81	0.88	0.00	0.08	0.35	<i>0.84</i>	<i>0.90</i>
<i>E1</i>	<i>70476.5132</i>	1.62	0.24	0.90	0.96	1.38	0.81	0.88	0.00	0.08	0.35	<i>0.82</i>	<i>0.89</i>
<i>F</i>	<i>118628.9595</i>	2.72	2.72	0.81	0.88	0.00	0.49	0.62	0.00	0.08	0.35	<i>0.81</i>	<i>0.88</i>
<i>G</i>	<i>20057.4496</i>	0.46	0.46	0.90	0.96	0.00	0.49	0.62	0.00	0.08	0.35	<i>0.90</i>	<i>0.96</i>
<i>J</i>	<i>139924.2472</i>	3.21	0.00	0.90	0.96	3.21	0.16	0.41	0.00	0.08	0.35	<i>0.16</i>	<i>0.41</i>
<i>A-5****</i>	<i>159865.2</i>	3.67	0.00	0.90	0.96	3.67	0.68	0.79	0.00	0.08	0.35	<i>0.68</i>	<i>0.79</i>
<i>Z-1****</i>	<i>16117.2</i>	0.37	0.00	0.90	0.96	0.37	0.33	0.52	0.00	0.08	0.35	<i>0.33</i>	<i>0.52</i>
<i>D-1****</i>	<i>33976.8</i>	0.78	0.00	0.90	0.96	0.78	0.62	0.75	0.00	0.08	0.35	<i>0.62</i>	<i>0.75</i>
<i>Z-2****</i>	<i>16552.8</i>	0.38	0.00	0.90	0.96	0.38	0.38	0.56	0.00	0.08	0.35	<i>0.38</i>	<i>0.56</i>
<i>G1</i>	<i>25617.769</i>	0.59	0.59	0.90	0.96	0.00	0.16	0.41	0.00	0.08	0.35	<i>0.90</i>	<i>0.96</i>
<i>CI</i>	<i>95425.7528</i>	2.19	2.04	0.81	0.88	0.00	0.49	0.62	0.15	0.08	0.35	<i>0.76</i>	<i>0.84</i>

\*FROM FDR FOR CLAREMONT BUSINESS PARK FILING NO. 2

\*\*FROM FDR FOR MEADOWBROOK CROSSING FILING 1 AND FILING 2

\*\*\*FROM FDR FOR LOT 1 24/94 BUSINESS PARK FILING NO. 1 ON PLATTE AVENUE AND MEADOWBROOK PARKWAY

\*\*\*\*FROM FDR FOR AURA AT CROSSROADS, DATED OCTOBER 29TH, 2021

Calculated by: TAU

Date: 11/22/2022

Checked by: DLM

# CROSSROADS MIXED USE FILING NO. 2

## FINAL DRAINAGE REPORT

### (Proposed Drainage Summary)

From Area Runoff Coefficient Summary				OVERLAND				STREET / CHANNEL FLOW				Time of Travel (T <sub>t</sub> )		INTENSITY #		TOTAL FLOWS	
BASIN	AREA TOTAL (Acres)	C <sub>5</sub>	C <sub>100</sub>	C <sub>5</sub>	Length (ft)	Height (ft)	T <sub>C</sub> (min)	Length (ft)	Slope (%)	Velocity (fps)	T <sub>t</sub> (min)	TOTAL (min)	CHECK (min)	I <sub>5</sub> (in/hr)	I <sub>100</sub> (in/hr)	Q <sub>5</sub> (c.f.s.)	Q <sub>100</sub> (c.f.s.)
<i>Proposed Area Drainage Summary</i>																	
<i>OS-A**</i>	1.29	0.62	0.72	0.62	40	0.8	4.4	1310	1.9%	2.8	7.9	12.3	17.5	3.8	6.4	3.1	6.0
<i>E2*</i>	3.86	0.80	0.90	0.80	50	1	3.0	400	1.3%	2.3	2.9	6.0	12.5	4.9	8.2	15.1	28.6
<i>EX-A2***</i>	0.59	0.90	0.96	0.90	10	0.2	0.9	916	1.9%	2.7	5.6	6.5	15.1	4.8	8.0	2.5	4.5
<i>OS-1</i>	1.40	0.90	0.96	0.90	100	3	2.5	490	2.2%	3.0	2.7	5.2	13.3	5.1	8.6	6.4	11.5
<i>OS-2</i>	4.98	0.49	0.66	0.49	85	8	4.8	1165	1.8%	2.0	9.6	14.5	16.9	3.6	6.0	8.7	19.6
<i>A</i>	1.67	0.90	0.96	0.90	30	0.6	1.6	1325	0.7%	1.7	7.3	8.9	17.5	4.3	7.2	6.5	11.6
<i>B</i>	1.48	0.90	0.96	0.90	25	0.5	1.4	1335	0.7%	1.7	7.3	8.8	17.6	4.3	7.3	5.8	10.3
<i>C</i>	2.36	0.76	0.85	0.76	50	1	3.4	260	1.5%	2.4	1.4	5.0	11.7	5.2	8.7	9.3	17.4
<i>D</i>	2.21	0.81	0.88	0.81	50	1	2.9	200	1.5%	2.4	1.1	5.0	11.4	5.2	8.7	9.3	16.9
<i>E</i>	0.84	0.84	0.90	0.84	60	1.2	2.9	700	1.0%	2.0	3.8	6.8	14.2	4.7	7.9	3.3	6.0
<i>E1</i>	1.62	0.82	0.89	0.82	60	1.2	2.9	700	1.0%	2.0	3.8	6.8	14.2	4.7	7.9	6.3	11.4
<i>F</i>	2.72	0.81	0.88	0.81	50	0.8	3.2	300	1.3%	2.3	1.6	5.0	11.9	5.2	8.7	11.4	20.8
<i>G</i>	0.46	0.90	0.96	0.90	50	1	2.0	466	1.1%	2.1	2.6	5.0	12.9	5.2	8.7	2.1	3.8
<i>J</i>	3.21	0.16	0.41	0.16	50	2	7.6	0	0.0%	0.0	0.0	7.6	10.3	4.5	7.6	2.3	10.0
<i>A-5****</i>	3.67	0.68	0.79	0.68	REFER TO "FDR FOR AURA AT CROSSROADS" FOR DETAILS											8.72	17.06
<i>Z-1****</i>	0.37	0.33	0.52	0.33	REFER TO "FDR FOR AURA AT CROSSROADS" FOR DETAILS											0.47	1.27
<i>D-1****</i>	0.78	0.62	0.75	0.62	REFER TO "FDR FOR AURA AT CROSSROADS" FOR DETAILS											2.08	4.20
<i>Z-2****</i>	0.38	0.38	0.56	0.38	REFER TO "FDR FOR AURA AT CROSSROADS" FOR DETAILS											0.57	1.43
<i>G1</i>	0.59	0.90	0.96	0.90	50	1	2.0	466	1.1%	2.1	2.6	5.0	12.9	5.2	8.7	2.7	4.9
<i>C1</i>	2.19	0.76	0.84	0.76	50	1	3.4	260	1.5%	2.4	1.4	5.0	11.7	5.2	8.7	9.3	17.4

# Intensity equations assume a minimum travel time of 5 minutes.

Calculated by: TAU

Date: 11/22/2022

Checked by: DLM

\*VALUES DERIVED USING DATA FROM FDR FOR CLAREMONT BUSINESS PARK FILING NO. 2

\*\*VALUES DERIVED USING DATA FROM FDR MEADOWBROOK CROSSING FILING 1 AND FILING 2 PAGE 31

\*\*\*VALUES DERIVED USING DATA FROM FDR LOT 1 24/94 BUSINESS PARK FILING NO. 1 ON PLATTE AVENUE AND MEADOWBROOK PARKWAY

\*\*\*\*FROM FDR FOR AURA AT CROSSROADS, DATED OCTOBER 29th, 2021

# CROSSROADS MIXED USE FILING NO. 2

## FINAL DRAINAGE REPORT

### (Proposed Basin Routing Summary)

From Area Runoff Coefficient Summary				OVERLAND				PIPE / CHANNEL FLOW				Time of Travel (T <sub>t</sub> )	INTENSITY *		TOTAL FLOWS		COMMENTS
DESIGN POINT	CONTRIBUTING BASINS	C <sub>A2</sub>	C <sub>A100</sub>	C <sub>s</sub>	Length (ft)	Height (ft)	T <sub>c</sub> (min)	Length (ft)	Slope (%)	Velocity (fps)	T <sub>1</sub> (min)	TOTAL (min)	I <sub>8</sub> (in/hr)	I <sub>100</sub> (in/hr)	Q <sub>8</sub> (c.f.s.)	Q <sub>100</sub> (c.f.s.)	
PROPOSED DRAINAGE BASIN ROUTING SUMMARY																	
1	E2, EX-A2	3.62	4.04				6.0	916	1.9%	2.7	5.6	11.6	3.9	6.6	14.2	26.5	Existing 10' CDOT Type R At-Grade Inlet (Public)
							Tc for E2 Used										
2	OS-A	0.80	0.93									12.3	3.8	6.4	3.1	6.0	Existing 10' CDOT Type R At-Grade Inlet (Public)
							Tc for OS-A Used										
3	OS-1, FB-DP1	2.73	3.69				11.6	150	1.0%	2.0	1.3	12.8	3.8	6.3	10.2	23.3	Proposed 10' CDOT Type R At-Grade Inlet (Public)
							Tc for DP1 Used										
4	A, FB-DP2	1.50	1.71									8.9	4.3	7.2	6.5	12.4	Proposed 15' CDOT Type R At-Grade Inlet (Public)
							Tc for Basin A used										
4.5	FB-DP4	0.00	0.24									8.9	4.3	7.2	0.0	1.8	Proposed NEENAH R-2501 MH Lid and Frame (Public)
							Tc for DP4 used										
5	B, FB-DP3	2.28	3.56									8.8	4.3	7.3	9.9	25.8	Proposed 15' CDOT Type R Sump Inlet (Public)
							Tc for Basin B Used										
6	C	1.81	2.00									5.0	5.2	8.7	9.3	17.4	Future 30" RCP or PP Storm Sewer, Rip Rap Pad (Private)
							Tc for Basin C Used										
6.5	C1	1.81	2.00									5.0	5.2	8.7	9.3	17.4	Future 30" RCP or PP Storm Sewer, Rip Rap Pad (Private)
							Tc for Basin C1 Used										
7	D	1.79	1.95									5.0	5.2	8.7	9.3	16.9	Future 24" RCP or PP Storm Sewer, Rip Rap Pad (Private)
							Tc for Basin D Used										
8	E	0.70	0.76									6.8	4.7	7.9	3.3	6.0	Future 10' CDOT Type R At-Grade Inlet (Private)
							Tc for Basin E Used										
9	E1	1.33	1.44									6.8	4.7	7.9	6.3	11.4	Future 10' CDOT Type R At-Grade Inlet (Private)
							Tc for Basin E1 Used										
10	G	0.41	0.44									5.0	5.2	8.7	2.1	3.8	Proposed 10' CDOT Type R Sump Inlet (Private)
							Tc for Basin G Used										
11	G1 FB-DP8 FB-DP9	0.53 -0.15 0.16	0.56 0.00 0.47									5.6	5.0	8.4	3.5	8.7	Proposed 15' CDOT Type R Sump Inlet (Private)
		0.69	1.03				Weighted Tc Used										
12	F	2.21	2.40									5.0	5.2	8.7	11.4	20.8	Proposed 24" RCP or PP Storm Sewer (Private)
							Tc for Basin F Used										
13	Basin A-5 (Overflow) Basin Z-1 Basin D-1 (Overflow)	0.23 0.12 0.00	1.32 0.20 0.21									12.8	3.8	6.3	1.3	10.9	Proposed 2" Bottom Earthen Swale, Rip Rap Rundown
		0.36	1.72				Weighted Tc Used										
14	Basin Z-2 DP 13	0.14 0.36	0.03 1.43									11.1	4.0	6.7	2.0	9.7	Proposed Triangular Earthen Swale (Private)
		0.50	1.46				Tc for Basin Z-2 Used										
15	J, DP14, PR19, PR18	24.21	28.30									6.3	4.8	8.1	117.0	229.7	Full Spectrum Extended Detention Basin (Private)
							Weighted Tc Used										
16	POND OUTFALL OS-2	2.77	5.16									14.5	3.6	6.0	9.9	31.0	HISTORIC FLOW IN CDOT BARROW DITCH Q5= 10.4 CFS, Q100 = 31.9 CFS PER HISTORIC DRAINAGE ANALYSIS
							Tc for Basin OS-2 Used										

\* Intensity equations assume a minimum travel time of 5 minutes.

Overflow- obtain flows from inlet sheets provided in Background Information Section of Appendix

TAU  
Date: 11/22/2022  
Checked by: DLM

**CROSSROADS MIXED USE FILING NO. 2**  
**FINAL DRAINAGE CALCULATIONS**  
**(Proposed Storm Sewer Routing Summary)**

PIPE RUN	Contributing Pipes/Design Points	Equivalent $CA_5$	Equivalent $CA_{100}$	Maximum $T_C$	Intensity*		Flow		PIPE SIZE
					$I_5$	$I_{100}$	$Q_5$	$Q_{100}$	
1	DP3 (INLET 3)	1.78	1.55	12.8	3.8	6.3	6.7	9.8	24" SD
1.5	DP4 (INLET 4)	1.50	1.46	8.9	4.3	7.2	6.5	10.6	24" SD
2	PR1.5, DP4.5 (INLET 4.5)	1.50	1.71	9.0	4.3	7.2	6.4	12.3	24" SD
3	PR2, DP5 (INLET 5)	3.78	5.27	9.0	4.3	7.2	16.2	37.9	36" SD
4	DP6	1.81	2.00	5.0	5.2	8.7	9.3	17.4	30" SD
4.5	DP6.5	1.81	2.00	5.0	5.2	8.7	9.3	17.4	30" SD
5	PR4, PR4.5	3.61	4.00	5.0	5.2	8.7	18.7	34.7	30" SD
6	PR5	3.61	4.00	5.0	5.2	8.7	18.7	34.7	30" SD
7	PR6	3.61	4.00	5.0	5.2	8.7	18.7	34.7	30" SD
8	DP7	1.79	1.95	5.0	5.2	8.7	9.3	16.9	24" SD
9	PR8, DP8 (Inlet 6)	2.64	2.70	6.8	4.7	7.9	12.4	21.4	30" SD
10	PR7, PR9	6.25	6.71	6.8	4.7	7.9	29.5	53.0	36" SD
11	PR10, DP9 (Inlet 7)	7.42	7.68	6.8	4.7	7.9	35.0	60.7	36" SD
11.5*	SEE FDR FOR AURA AT CROSSROADS	1.93	2.30	14.6	3.6	6.0	6.9	13.8	30" SD
12	PR11	7.42	7.68	7.0	4.7	7.8	34.6	60.1	42" SD
12.5	PR12, PR11.5	9.35	9.98	7.2	4.6	7.8	43.2	77.4	48" SD
13	DP10 (Inlet 8)	0.41	0.44	5.0	5.2	8.7	2.1	3.8	18" SD
14	DP11 (Inlet 9)	0.69	1.03	5.6	5.0	8.4	3.5	8.7	30" SD
15	PR12.5, PR13, PR14	10.46	11.45	7.5	4.6	7.7	47.7	87.7	48" SD
16	DP12	2.21	2.40	5.0	5.2	8.7	11.4	20.8	24" SD
17	PR15, PR16	12.66	13.85	7.7	4.5	7.6	57.3	105.1	48" SD
18	PR17, PR21	13.14	14.43	8.2	4.4	7.4	58.2	107.3	48" SD
19*	SEE FDR FOR AURA AT CROSSROADS	10.05	11.09	15.0	3.5	5.9	35.4	65.5	48" SD
20	POND OUTFALL	PER	MHFD	WKSHT			1.2	11.4	18" SD
21*	SEE FDR FOR AURA AT CROSSROADS	0.48	0.58	8.8	4.3	7.3	2.1	4.2	30" SD

\*REFER TO FDR FOR AURA AT CROSSROADS FOR CONTRIBUTING PIPE FLOW DETAILS

DP - Design Point

EX - Existing Design Point

FB- Flow By from Design Point

INT- Intercepted Flow from Design Point

Calculated by: TAU

Date: 11/22/2022

Checked by: DLM

**ALLOWABLE CAPACITY FOR ONE-HALF OF STREET (Minor & Major Storm)**

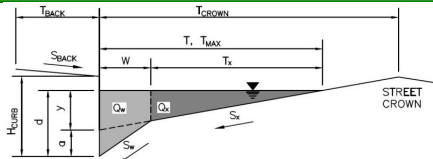
(Based on Regulated Criteria for Maximum Allowable Flow Depth and Spread)

Project:

Crossroads Mixed Use

Inlet ID:

Inlet 6

**Gutter Geometry (Enter data in the blue cells)**

Maximum Allowable Width for Spread Behind Curb

Side Slope Behind Curb (leave blank for no conveyance credit behind curb)

Manning's Roughness Behind Curb (typically between 0.012 and 0.020)

Height of Curb at Gutter Flow Line

Distance from Curb Face to Street Crown

Gutter Width

Street Transverse Slope

Gutter Cross Slope (typically 2 inches over 24 inches or 0.083 ft/ft)

Street Longitudinal Slope - Enter 0 for sump condition

Manning's Roughness for Street Section (typically between 0.012 and 0.020)

$T_{BACK}$	7.5	ft
$S_{BACK}$	0.020	ft/ft
$n_{BACK}$	0.020	

$H_{CURB}$	6.00	inches
$T_{CROWN}$	14.0	ft
$W$	2.00	ft
$S_x$	0.020	ft/ft
$S_W$	0.083	ft/ft
$S_0$	0.020	ft/ft
$n_{STREET}$	0.016	

Max. Allowable Spread for Minor &amp; Major Storm

Max. Allowable Depth at Gutter Flowline for Minor &amp; Major Storm

Allow Flow Depth at Street Crown (leave blank for no)

	Minor Storm	Major Storm	
$T_{MAX}$	14.0	14.0	ft
$d_{MAX}$	4.4	8.8	inches
	<input type="checkbox"/>	<input checked="" type="checkbox"/>	check = yes

**Maximum Capacity for 1/2 Street based On Allowable Spread**

Water Depth without Gutter Depression (Eq. ST-2)

Vertical Depth between Gutter Lip and Gutter Flowline (usually 2")

Gutter Depression ( $d_c - (W * S_x * 12)$ )

Water Depth at Gutter Flowline

Allowable Spread for Discharge outside the Gutter Section  $W$  ( $T - W$ )

Gutter Flow to Design Flow Ratio by FHWA HEC-22 method (Eq. ST-7)

Discharge outside the Gutter Section  $W$ , carried in Section  $T_x$ Discharge within the Gutter Section  $W$  ( $Q_T - Q_X$ )

Discharge Behind the Curb (e.g., sidewalk, driveways, &amp; lawns)

**Maximum Flow Based On Allowable Spread**

Flow Velocity within the Gutter Section

 $V*d$  Product: Flow Velocity times Gutter Flowline Depth

	Minor Storm	Major Storm	
$y$	3.36	3.36	inches
$d_c$	2.0	2.0	inches
$a$	1.51	1.51	inches
$d$	4.87	4.87	inches
$T_x$	12.0	12.0	ft
$E_0$	0.425	0.425	
$Q_X$	5.5	5.5	cfs
$Q_W$	4.1	4.1	cfs
$Q_{BACK}$	0.0	0.0	cfs
$Q_T$	9.6	9.6	cfs
$V$	6.3	6.3	fps
$V*d$	2.6	2.6	

**Maximum Capacity for 1/2 Street based on Allowable Depth**

Theoretical Water Spread

Theoretical Spread for Discharge outside the Gutter Section  $W$  ( $T - W$ )

Gutter Flow to Design Flow Ratio by FHWA HEC-22 method (Eq. ST-7)

Theoretical Discharge outside the Gutter Section  $W$ , carried in Section  $T_{XTH}$ Actual Discharge outside the Gutter Section  $W$ , (limited by distance  $T_{CROWN}$ )Discharge within the Gutter Section  $W$  ( $Q_d - Q_X$ )

Discharge Behind the Curb (e.g., sidewalk, driveways, &amp; lawns)

Total Discharge for Major &amp; Minor Storm (Pre-Safety Factor)

Average Flow Velocity Within the Gutter Section

 $V*d$  Product: Flow Velocity Times Gutter Flowline DepthSlope-Based Depth Safety Reduction Factor for Major & Minor ( $d \geq 6"$ ) Storm**Max Flow Based on Allowable Depth (Safety Factor Applied)**

Resultant Flow Depth at Gutter Flowline (Safety Factor Applied)

Resultant Flow Depth at Street Crown (Safety Factor Applied)

	Minor Storm	Major Storm	
$T_{TH}$	11.8	30.4	ft
$T_{XTH}$	9.8	28.4	ft
$E_0$	0.498	0.191	
$Q_{XTH}$	3.2	54.6	cfs
$Q_X$	3.2	42.0	cfs
$Q_W$	3.2	12.9	cfs
$Q_{BACK}$	0.0	3.8	cfs
$Q$	6.4	58.7	cfs
$V$	5.7	9.9	fps
$V*d$	2.1	7.3	
$R$	1.00	0.83	
$Q_d$	6.4	49.0	cfs
$d$	4.35	8.26	inches
$d_{CROWN}$	0.00	3.39	inches

MINOR STORM Allowable Capacity is based on Depth Criterion

MAJOR STORM Allowable Capacity is based on Depth Criterion

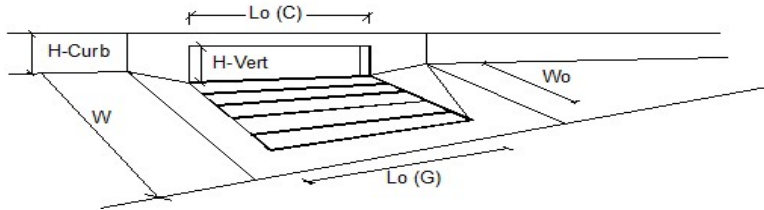
	Minor Storm	Major Storm	
$Q_{allow}$	6.4	49.0	cfs

Minor storm max. allowable capacity GOOD - greater than the design flow given on sheet 'Inlet Management'

Major storm max. allowable capacity GOOD - greater than the design flow given on sheet 'Inlet Management'

# INLET ON A CONTINUOUS GRADE

Version 4.06 Released August 2018



Design Information (Input)		MINOR		MAJOR	
Type of Inlet	CDOT Type R Curb Opening	Type =	CDOT Type R Curb Opening		
Local Depression (additional to continuous gutter depression 'a')		$a_{LOCAL}$ =	3.0	3.0	inches
Total Number of Units in the Inlet (Grate or Curb Opening)		$N_o$ =	1	1	
Length of a Single Unit Inlet (Grate or Curb Opening)		$L_o$ =	10.00	10.00	ft
Width of a Unit Grate (cannot be greater than W, Gutter Width)		$W_o$ =	N/A	N/A	ft
Clogging Factor for a Single Unit Grate (typical min. value = 0.5)		$C_{r-G}$ =	N/A	N/A	
Clogging Factor for a Single Unit Curb Opening (typical min. value = 0.1)		$C_{r-C}$ =	0.10	0.10	
<b>Street Hydraulics: OK - Q &lt; Allowable Street Capacity</b>		MINOR		MAJOR	
Total Inlet Interception Capacity		Q =	4.0	6.0	cfs
Total Inlet Carry-Over Flow (flow bypassing inlet)		$Q_b$ =	0.1	1.4	cfs
Capture Percentage = $Q_i/Q_o$ =		C% =	98	81	%

**ALLOWABLE CAPACITY FOR ONE-HALF OF STREET (Minor & Major Storm)**

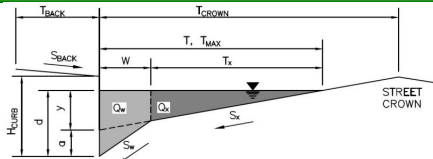
(Based on Regulated Criteria for Maximum Allowable Flow Depth and Spread)

Project:

Crossroads Mixed Use

Inlet ID:

Inlet 7

**Gutter Geometry (Enter data in the blue cells)**

Maximum Allowable Width for Spread Behind Curb

Side Slope Behind Curb (leave blank for no conveyance credit behind curb)

Manning's Roughness Behind Curb (typically between 0.012 and 0.020)

Height of Curb at Gutter Flow Line

Distance from Curb Face to Street Crown

Gutter Width

Street Transverse Slope

Gutter Cross Slope (typically 2 inches over 24 inches or 0.083 ft/ft)

Street Longitudinal Slope - Enter 0 for sump condition

Manning's Roughness for Street Section (typically between 0.012 and 0.020)

$T_{BACK}$	7.5	ft
$S_{BACK}$	0.020	ft/ft
$n_{BACK}$	0.020	

$H_{CURB}$	6.00	inches
$T_{CROWN}$	14.0	ft
$W$	2.00	ft
$S_x$	0.020	ft/ft
$S_w$	0.083	ft/ft
$S_o$	0.020	ft/ft
$n_{STREET}$	0.016	

Max. Allowable Spread for Minor &amp; Major Storm

Max. Allowable Depth at Gutter Flowline for Minor &amp; Major Storm

Allow Flow Depth at Street Crown (leave blank for no)

	Minor Storm	Major Storm	
$T_{MAX}$	14.0	14.0	ft
$d_{MAX}$	4.4	8.8	inches
	<input type="checkbox"/>	<input checked="" type="checkbox"/>	check = yes

**Maximum Capacity for 1/2 Street based On Allowable Spread**

Water Depth without Gutter Depression (Eq. ST-2)

Vertical Depth between Gutter Lip and Gutter Flowline (usually 2")

Gutter Depression ( $d_c - (W * S_x * 12)$ )

Water Depth at Gutter Flowline

Allowable Spread for Discharge outside the Gutter Section W ( $T - W$ )

Gutter Flow to Design Flow Ratio by FHWA HEC-22 method (Eq. ST-7)

Discharge outside the Gutter Section W, carried in Section  $T_x$ Discharge within the Gutter Section W ( $Q_T - Q_X$ )

Discharge Behind the Curb (e.g., sidewalk, driveways, &amp; lawns)

**Maximum Flow Based On Allowable Spread**

Flow Velocity within the Gutter Section

 $V*d$  Product: Flow Velocity times Gutter Flowline Depth

	Minor Storm	Major Storm	
$y$	3.36	3.36	inches
$d_c$	2.0	2.0	inches
$a$	1.51	1.51	inches
$d$	4.87	4.87	inches
$T_x$	12.0	12.0	ft
$E_o$	0.425	0.425	
$Q_X$	5.5	5.5	cfs
$Q_W$	4.1	4.1	cfs
$Q_{BACK}$	0.0	0.0	cfs
$Q_T$	9.6	9.6	cfs
$V$	6.3	6.3	fps
$V*d$	2.6	2.6	

**Maximum Capacity for 1/2 Street based on Allowable Depth**

Theoretical Water Spread

Theoretical Spread for Discharge outside the Gutter Section W ( $T - W$ )

Gutter Flow to Design Flow Ratio by FHWA HEC-22 method (Eq. ST-7)

Theoretical Discharge outside the Gutter Section W, carried in Section  $T_{XTH}$ Actual Discharge outside the Gutter Section W, (limited by distance  $T_{CROWN}$ )Discharge within the Gutter Section W ( $Q_d - Q_X$ )

Discharge Behind the Curb (e.g., sidewalk, driveways, &amp; lawns)

Total Discharge for Major &amp; Minor Storm (Pre-Safety Factor)

Average Flow Velocity Within the Gutter Section

 $V*d$  Product: Flow Velocity Times Gutter Flowline DepthSlope-Based Depth Safety Reduction Factor for Major & Minor ( $d \geq 6"$ ) Storm**Max Flow Based on Allowable Depth (Safety Factor Applied)**

Resultant Flow Depth at Gutter Flowline (Safety Factor Applied)

Resultant Flow Depth at Street Crown (Safety Factor Applied)

	Minor Storm	Major Storm	
$T_{TH}$	12.0	30.4	ft
$T_{XTH}$	10.0	28.4	ft
$E_o$	0.490	0.191	
$Q_{XTH}$	3.4	54.6	cfs
$Q_X$	3.4	42.0	cfs
$Q_W$	3.3	12.9	cfs
$Q_{BACK}$	0.0	3.8	cfs
$Q$	6.7	58.7	cfs
$V$	5.8	9.9	fps
$V*d$	2.1	7.3	
$R$	1.00	0.83	
$Q_d$	6.7	49.0	cfs
$d$	4.40	8.26	inches
$d_{CROWN}$	0.00	3.39	inches

MINOR STORM Allowable Capacity is based on Depth Criterion

MAJOR STORM Allowable Capacity is based on Depth Criterion

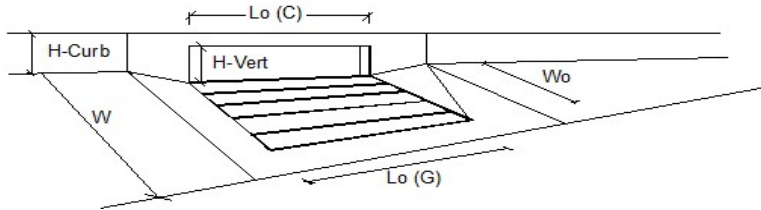
	Minor Storm	Major Storm	
$Q_{allow}$	6.7	49.0	cfs

Minor storm max. allowable capacity GOOD - greater than the design flow given on sheet 'Inlet Management'

Major storm max. allowable capacity GOOD - greater than the design flow given on sheet 'Inlet Management'

## INLET ON A CONTINUOUS GRADE

Version 4.06 Released August 2018

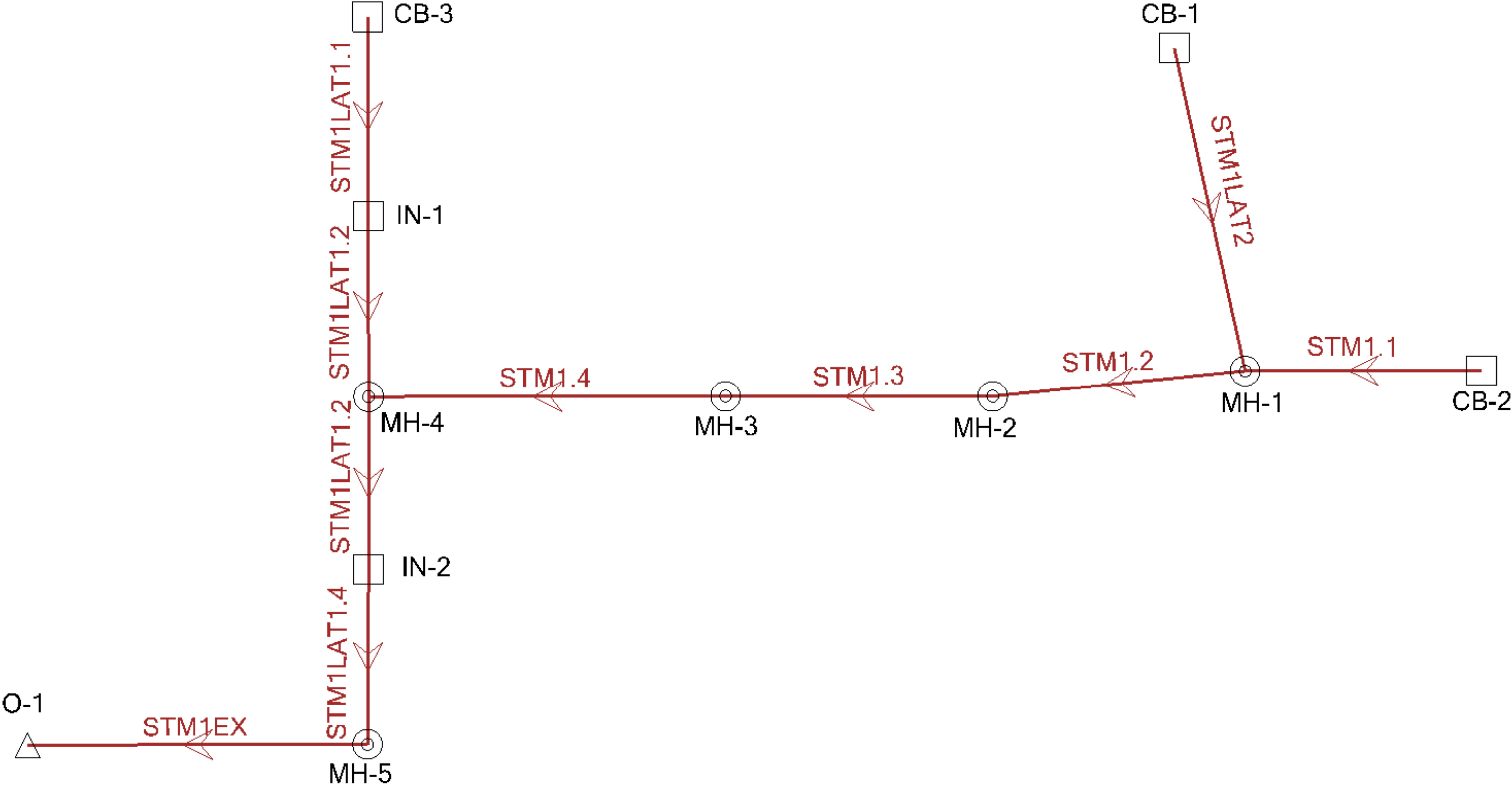


Design Information (Input)	MINOR	MAJOR	
Type of Inlet	CDOT Type R Curb Opening		
Local Depression (additional to continuous gutter depression 'a')	3.0	3.0	inches
Total Number of Units in the Inlet (Grate or Curb Opening)	1	1	
Length of a Single Unit Inlet (Grate or Curb Opening)	10.00	10.00	ft
Width of a Unit Grate (cannot be greater than W, Gutter Width)	N/A	N/A	ft
Clogging Factor for a Single Unit Grate (typical min. value = 0.5)	N/A	N/A	
Clogging Factor for a Single Unit Curb Opening (typical min. value = 0.1)	0.10	0.10	
<b>Street Hydraulics: OK - Q &lt; Allowable Street Capacity</b>			
Total Inlet Interception Capacity	5.5	7.7	cfs
Total Inlet Carry-Over Flow (flow bypassing inlet)	0.9	4.0	cfs
Capture Percentage = $Q_i/Q_o =$	86	66	%



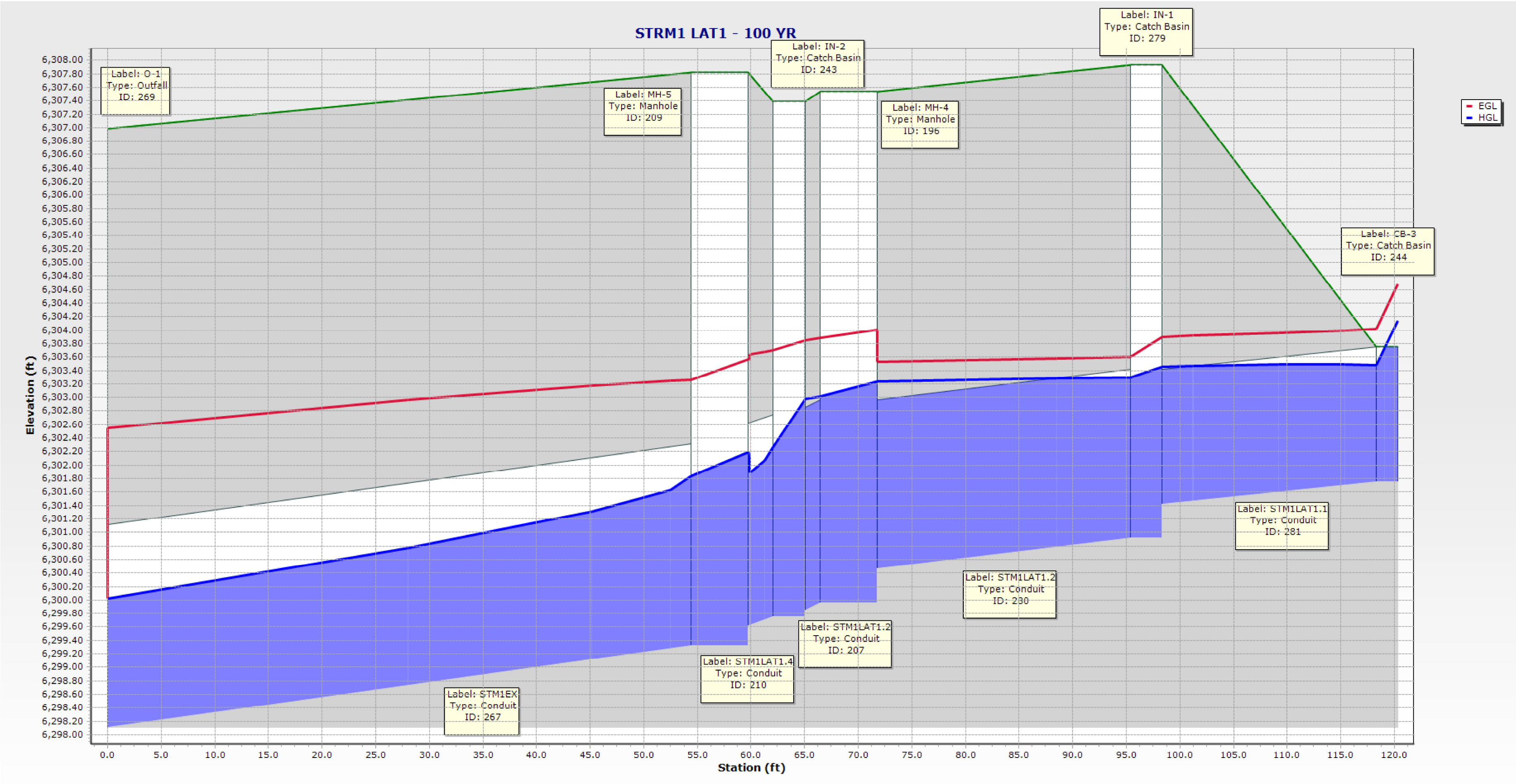
## **HYDRAULIC CALCULATIONS**

STORM 1, LAT 1, LAT 2 INDEX MAP

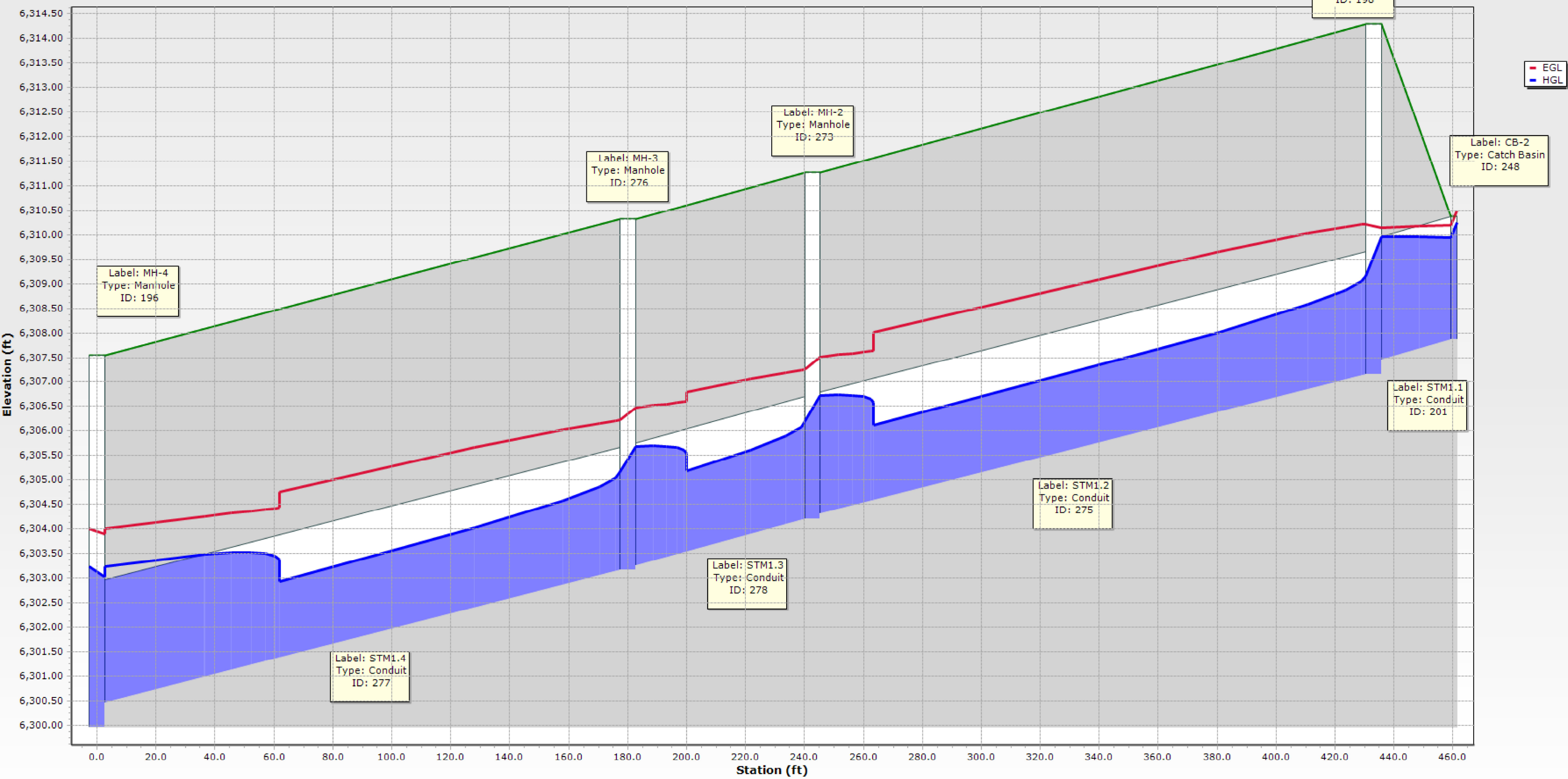


Conduit FlexTable: STRM1-LAT1-LAT2 100 YR

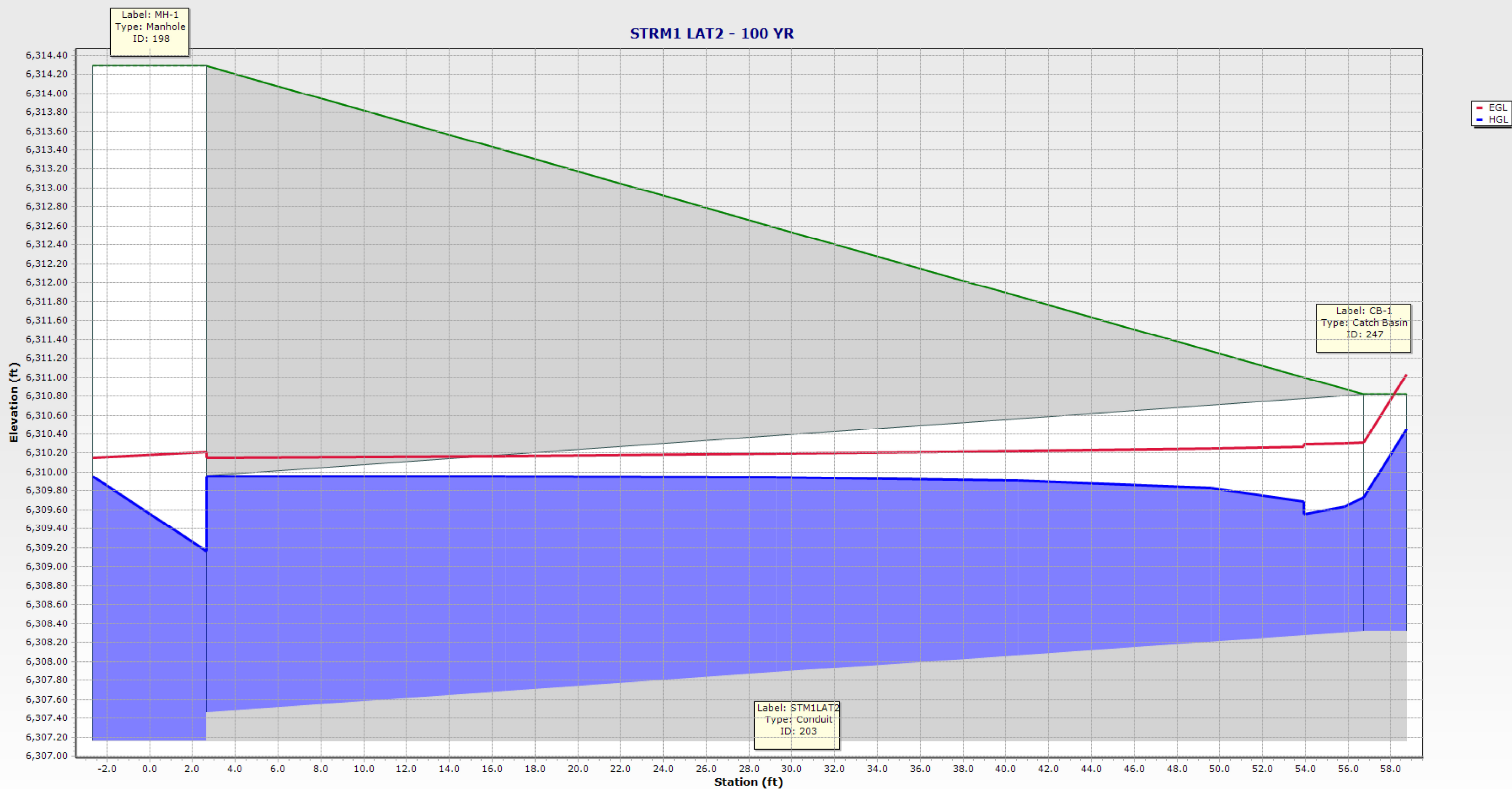
Label	ID	Upstream Structure	Flow (cfs)	Flow / Capacity (Design) (%)	Length (Unified) (ft)	Velocity (ft/s)	Depth (Normal) (ft)	Depth (Critical) (ft)	Energy Grade Line (In) (ft)	Energy Grade Line (Out) (ft)	Hydraulic Grade Line (In) (ft)	Hydraulic Grade Line (Out) (ft)	Headloss (ft)	Upstream Structure Hydraulic Grade Line (In) (ft)
STM1.1	201	CB-2	17.40	34.6	27.4	9.30	1.02	1.41	6,310.19	6,310.15	6,309.94	6,309.95	-0.01	6,310.25
STM1LAT2	203	CB-1	17.40	34.8	57.7	9.28	1.02	1.41	6,310.31	6,310.15	6,309.73	6,309.95	-0.22	6,310.45
STM1LAT1.2	207	MH-4	53.00	56.5	5.6	7.50	1.61	2.37	6,303.89	6,303.85	6,303.01	6,302.98	0.04	6,303.23
STM1LAT1.4	210	IN-2	60.70	64.0	6.4	14.23	1.74	2.51	6,303.70	6,303.57	6,302.26	6,302.19	0.07	6,302.98
STM1EX	267	MH-5	60.70	62.5	57.1	14.49	1.72	2.51	6,303.27	6,302.55	6,301.83	6,300.02	1.81	6,302.19
STM1.2	275	MH-1	34.70	69.0	190.2	11.05	1.53	2.00	6,310.22	6,307.52	6,309.16	6,306.73	2.43	6,309.95
STM1.4	277	MH-3	34.70	69.1	180.1	11.04	1.53	2.00	6,306.22	6,304.01	6,305.16	6,303.23	1.93	6,305.69
STM1.3	278	MH-2	34.70	69.1	62.6	11.04	1.53	2.00	6,307.26	6,306.48	6,306.20	6,305.69	0.51	6,306.73
STM1LAT1.2	280	IN-1	21.40	40.5	27.8	10.19	1.11	1.57	6,303.60	6,303.53	6,303.30	6,303.23	0.06	6,303.45
STM1LAT1.1	281	CB-3	16.90	61.6	22.5	9.18	1.14	1.48	6,304.01	6,303.90	6,303.48	6,303.45	0.04	6,304.15
Upstream Structure Velocity (In-Governing) (ft/s)	Upstream Structure Headloss Coefficient	Upstream Structure Headloss (ft)	Elevation Ground (Start) (ft)	Elevation Ground (Stop) (ft)	Invert (Start) (ft)	Invert (Stop) (ft)	Conduit Description	Manning's n	Friction Slope (ft/ft)	Slope (Calculated) (ft/ft)				
4.00	1.250	0.31	6,314.29	6,310.37	6,307.46	6,307.87	Circle - 30.0 in	0.013	0.002	-0.015				
6.09	1.250	0.72	6,314.29	6,310.82	6,307.46	6,308.32	Circle - 30.0 in	0.013	0.003	-0.015				
7.07	0.250	0.22	6,307.39	6,307.54	6,299.85	6,299.96	Circle - 36.0 in	0.013	0.006	-0.020				
7.50	0.500	0.72	6,307.82	6,307.39	6,299.62	6,299.75	Circle - 36.0 in	0.013	0.020	-0.020				
9.41	0.250	0.36	6,306.99	6,307.82	6,298.11	6,299.32	Circle - 36.0 in	0.013	0.013	-0.021				
3.55	0.750	0.79	6,311.27	6,314.29	6,304.30	6,307.16	Circle - 30.0 in	0.013	0.014	-0.015				
7.13	0.500	0.53	6,307.54	6,310.31	6,300.46	6,303.16	Circle - 30.0 in	0.013	0.012	-0.015				
7.13	0.500	0.53	6,310.31	6,311.27	6,303.26	6,304.20	Circle - 30.0 in	0.013	0.012	-0.015				
5.38	0.500	0.15	6,307.54	6,307.93	6,300.46	6,300.92	Circle - 30.0 in	0.013	0.003	-0.017				
5.84	1.250	0.66	6,307.93	6,303.75	6,301.42	6,301.75	Circle - 24.0 in	0.013	0.005	-0.015				



STRM1 - 100 YR







## **BACKGROUND**

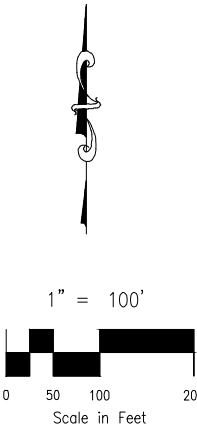
## **DRAINAGE MAPS**



# CROSSROADS MIXED USE FILING NO. 2

## EXISTING CONDITIONS DRAINAGE MAP

**\*NOTES:**  
1.) NOT SHOWN IS BASIN "E2". THIS BASIN LIES TO THE EAST OF BASIN "EX-A2". DELINEATION AND HYDROLOGIC DETAILS OF THIS BASIN CAN BE FOUND IN THE "FDR FOR CLAREMONT BUSINESS PARK FILING NO. 2" ON PAGES 39 AND 41, RESPECTIVELY.



**LEGEND**

**BASIN DESIGNATION**  
Z  
25 .25  
35 C100

**ACRES**

**1** SURFACE DESIGN POINT

**---** BASIN BOUNDARY

**(7070)** EXIST MAJ CONT

**(7072)** EXIST MIN CONT

**H.P.** EXISTING FLOW DIRECTION ARROW

**L.P.** HIGH POINT

**---** LOW POINT

**---** PROPOSED SWALE

**---** EXISTING SWALE

**---** CONSTRUCTION/DISTURBANCE LIMITS

**---** SITE BOUNDARY

**---** R.O.W./EASEMENT

**---** LOT LINE

**---** EX. STORM SEWER LINE

**---** EX. UNDERGROUND ELECTRIC LINE

**---** EX. SANITARY SEWER LINE

**---** EX. WATER LINE

**---** EX. STORM SEWER LINE

**9** LOT NUMBER

**CV** EX. IRRIGATION VALVE

**ST** EX. STORM INLET

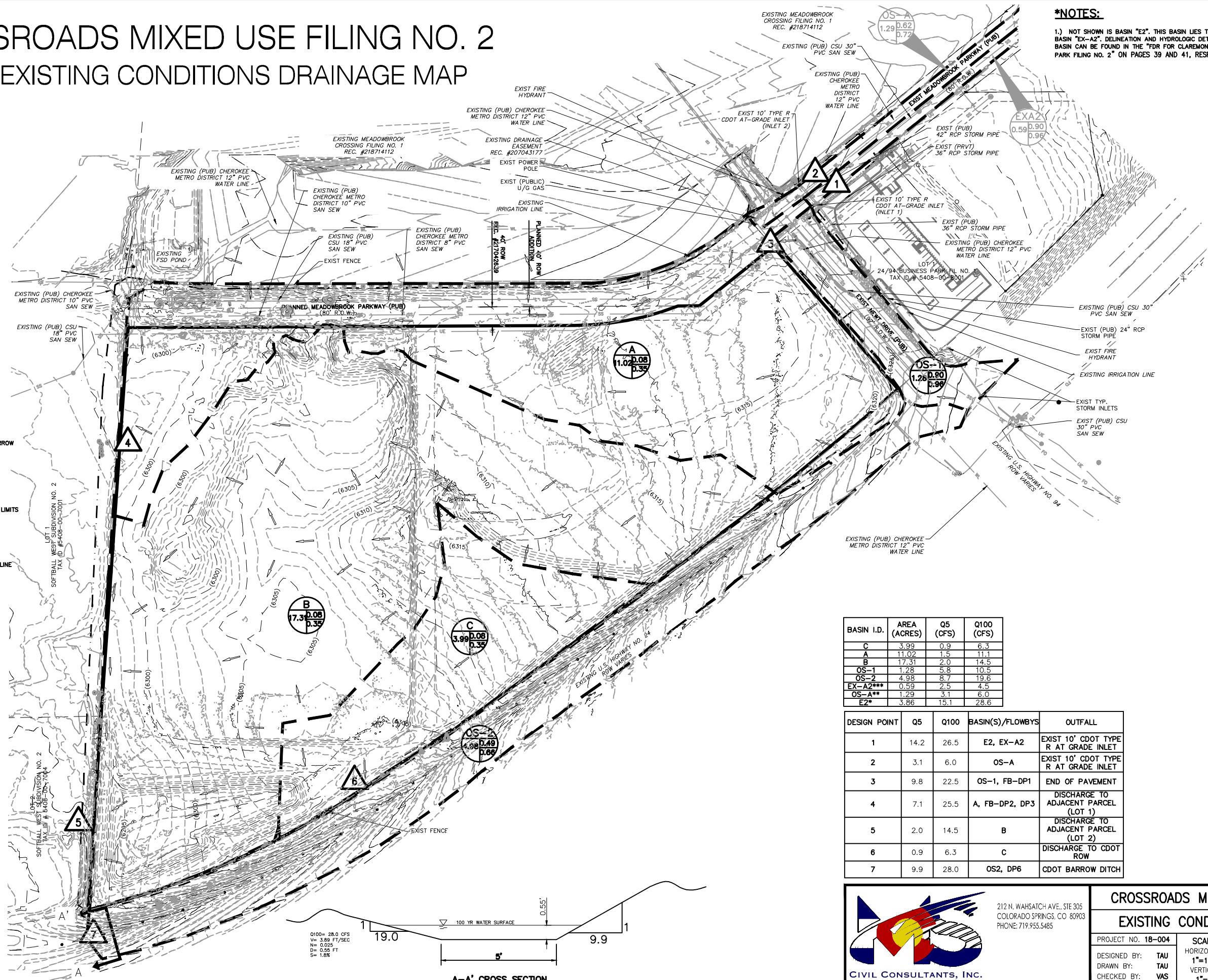
**ST** EX. GAS TEST NODE

**ST** EX. TELEPHONE PEDESTAL

**ST** EX. ELECTRIC VAULT

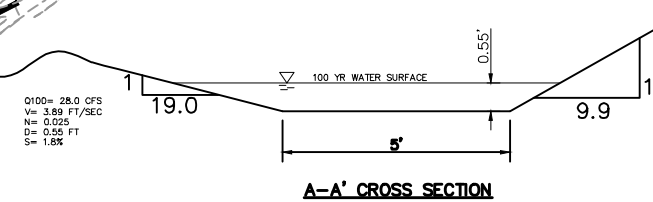
**ST** EX. SANITARY MANHOLE

**ST** EX. WATER VALVE



BASIN I.D.	AREA (ACRES)	Q5 (CFS)	Q100 (CFS)
C	3.99	0.9	6.3
A	11.02	1.5	11.1
B	17.31	2.0	14.5
OS-1	1.28	5.8	10.5
OS-2	4.98	8.7	19.6
EX-A2***	0.59	2.5	4.5
OS-A**	1.29	3.1	6.0
E2*	3.86	15.1	28.6

DESIGN POINT	Q5	Q100	BASIN(S)/FLOWBYS	OUTFALL
1	14.2	26.5	E2, EX-A2	EXIST 10' CDOT TYPE R AT GRADE INLET
2	3.1	6.0	OS-A	EXIST 10' CDOT TYPE R AT GRADE INLET
3	9.8	22.5	OS-1, FB-DP1	END OF PAVEMENT
4	7.1	25.5	A, FB-DP2, DP3	DISCHARGE TO ADJACENT PARCEL (LOT 1)
5	2.0	14.5	B	DISCHARGE TO ADJACENT PARCEL (LOT 2)
6	0.9	6.3	C	DISCHARGE TO CDOT ROW
7	9.9	28.0	OS2, DP6	CDOT BARROW DITCH



FOR LOCATING & MARKING GAS, ELECTRIC, WATER & TELEPHONE LINES

FOR BURIED UTILITY INFORMATION 48 HRS BEFORE YOU DIG CALL 1-800-922-1987

212 N. WAHSATCH AVE., STE 305  
COLORADO SPRINGS, CO 80903  
PHONE: 719.955.5485

**CROSSROADS MIXED USE FILING NO. 2**

**EXISTING CONDITIONS DRAINAGE MAP**

PROJECT NO. 18-004

DESIGNED BY: TAU  
DRAWN BY: TAU  
CHECKED BY: VAS

SCALE:  
HORIZONTAL: 1"=100'  
VERTICAL: 1"=5'

DATE: 11/23/2022

SHEET 1 OF 1

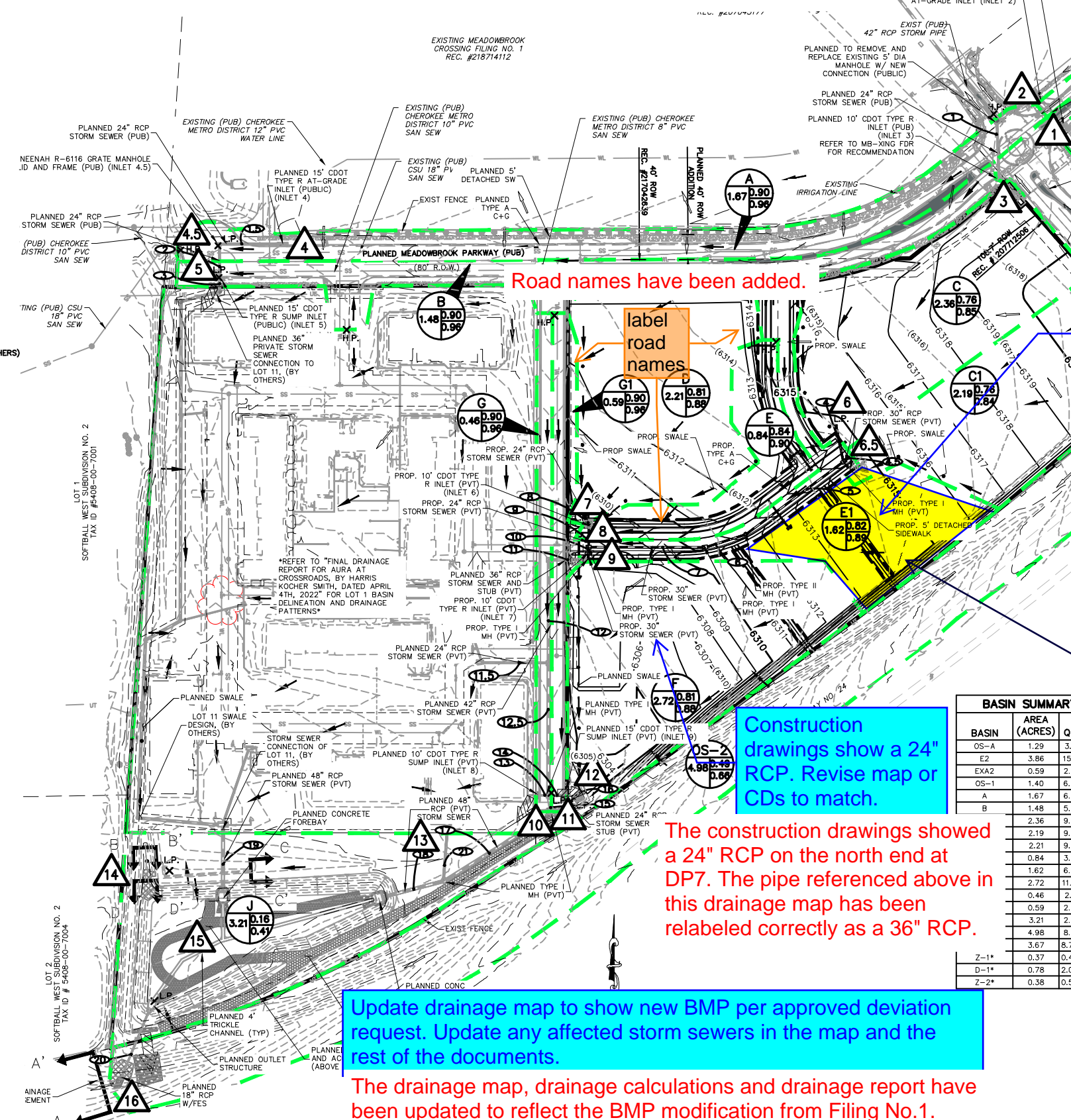
**EDM**



# CROSSROADS MIXED USE FILING NO. 2

## PROPOSED CONDITIONS DRAINAGE MAP

- LEGEND**
- BASIN DESIGNATION**
- ACRES
- 1**
- SURFACE DESIGN POINT**
- PROPOSED BASIN BOUNDARY**
- PIPE RUN LABEL**
- PROP MAJ CONT**
- PROP MIN CONT**
- EXIST MAJ CONT**
- EXIST MIN CONT**
- PROPOSED STORM SEWER PIPE**
- PROPOSED STORM SEWER PIPE (OTHERS)**
- FUTURE STORM SEWER PIPE**
- EXISTING FLOW DIRECTION ARROW**
- H.P.**
- EXISTING SWALE**
- SITE BOUNDARY**
- PROPOSED UTILITY EASEMENT**
- PROPOSED DRAINAGE EASEMENT**
- PROPOSED LANDSCAPE EASEMENT**
- LOT LINE**
- STORM SEWER LINE**
- EX. UNDERGROUND ELECTRIC LINE**
- EX. SANITARY SEWER LINE**
- EX. WATER LINE**
- EX. STORM SEWER LINE**
- LOT NUMBER**
- EX. IRRIGATION VALVE**
- EX. STORM INLET**
- EX. GAS TEST NODE**
- EX. TELEPHONE PEDESTAL**
- EX. ELECTRIC VAULT**
- EX. SANITARY MANHOLE**
- EX. WATER VALVE**
- PROPOSED RIPRAP**
- EMERGENCY OVERFLOW DIRECTION**
- LOW POINT**
- PROPOSED SWALE**



Road names have been added.

label road names

Construction drawings show a 24" RCP. Revise map or CDs to match.

The construction drawings showed a 24" RCP on the north end at DP7. The pipe referenced above in this drainage map has been relabeled correctly as a 36" RCP.

Update drainage map to show new BMP per approved deviation request. Update any affected storm sewers in the map and the rest of the documents.

The drainage map, drainage calculations and drainage report have been updated to reflect the BMP modification from Filing No.1.

The inconsistencies of private versus public storm sewer, pipe size, and missing proposed swales have been addressed.

There are several inconsistencies between these drainage map and CDs proposed conditions. These include: labeling of private and public storm sewer, mismatched pipe sizes, and missing proposed swales. Coordinate with CD engineer to remove inconsistencies between the two documents.

Consider providing a stub on the trunkline for the highlighted area to connect to instead of allowing sheetflow across lot 1.

Clarify what "planned" improvements mean. Staff is assuming "Planned" are proposed improvements constructed with filing 1.

This was considered, however the amount of sheet flow that would exit the site to the roadway is approximately 3 cfs during 100-year event and the flows do not drain off of the lots to the same single point. The Lot 1 & 2 drainage report discusses this in detail.

The staff's assumption of "planned" improvements is correct and has been clarified in the drainage map and report text.

Based on the proposed contours adjust Basin F boundary to include the highlighted area or provide an explanation on the DP9/Basin E1 description on how this is supposed to drain to the inlet at DP9 (Based on the proposed grading this doesn't seem possible)

Lot 2 will be developed in the next phase so that all of Basin E1 will drain to the inlet at DP9. (this note will be included in the text of the report for clarification)

BASIN SUMMARY			
BASIN	AREA (ACRES)	Q <sub>5</sub>	Q <sub>100</sub>
OS-A	1.29	3.1	6.0
E2	3.86	15.1	28.6
EXA2	0.59	2.5	4.5
OS-1	1.40	6.4	11.5
A	1.67	6.5	11.6
B	1.48	5.8	10.3
	2.36	9.3	17.4
	2.19	9.3	17.4
	2.21	9.3	16.9
	0.84	3.3	6.0
	1.62	6.3	11.4
	2.72	11.4	20.8
	0.46	2.1	3.8
	0.59	2.7	4.9
	3.21	2.3	10.0
	4.98	8.7	19.6
	3.67	8.72	17.06
Z-1*	0.37	0.47	1.27
D-1*	0.78	2.08	4.20
Z-2*	0.38	0.57	1.43

STORM SEWER SUMMARY				
PIPE	Q <sub>5</sub>	Q <sub>100</sub>	PIPE SIZE	CONTRIBUTING PIPES/DESIGN POINTS
6.7	9.8	24"	SD	DP3 (INLET 3)
6.5	10.6	24"	SD	DP4 (INLET 4)
6.4	12.3	24"	SD	PR1.5, DP4.5 (INLET 4.5)
16.2	37.9	36"	SD	PR2, DP5 (INLET 5)
9.3	17.4	30"	SD	DP6
9.3	17.4	30"	SD	DP6.5
18.7	34.7	30"	SD	PR4, PR4.5
18.7	34.7	30"	SD	PR5
18.7	34.7	30"	SD	PR6
9.3	16.9	24"	SD	DP7
12.4	21.4	30"	SD	PR8, DP8 (INLET 6)
29.5	53.0	36"	SD	PR7, PR9
0	60.7	36"	SD	PR10, DP9 (INLET 7)
1	13.8	24"	SD	SEE FOR AURA AT CROSSROADS
6	60.1	42"	SD	PR11
2	77.4	48"	SD	PR12, PR11.5
1	3.8	18"	SD	DP10 (INLET 8)
1	8.7	30"	SD	DP11 (INLET 9)
7	87.7	48"	SD	PR12.5, PR13, PR14
4	20.8	24"	SD	DP12
3	105.1	48"	SD	PR15, PR16
2	107.3	48"	SD	PR17, PR21
4	65.5	48"	SD	SEE FOR AURA AT CROSSROADS
20	1.2	11.4	18"	SD
21*	2.1	4.2	30"	SD

FOR LOCATING & MARKING GAS, ELECTRIC, WATER & TELEPHONE LINES

FOR BURIED UTILITY INFORMATION 48 HRS BEFORE YOU DIG CALL 1-800-922-1987

**CIVIL CONSULTANTS, INC.**

212 N. WAHSAATCH AVE., STE 305  
COLORADO SPRINGS, CO 80903  
PHONE: 719.955.5485

**CROSSROADS MIXED USE FILING NO. 2**

**PROPOSED CONDITIONS DRAINAGE MAP**

PROJECT NO. 18-004

DESIGNED BY: TAU  
DRAWN BY: TAU  
CHECKED BY: VAS

SCALE: HORIZONTAL: 1"=100'  
VERTICAL: 1"=5'

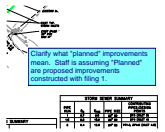
DATE: 11/23/2022

SHEET 1 OF 1

**PDM**

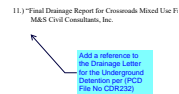
# V1\_Drainage Report - Final.pdf Markup Summary

dsdlaforce (5)



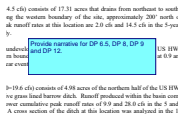
**Subject:** Text Box  
**Page Label:** [1] DRAINAGE  
**Lock:** Unlocked  
**Author:** dsdlaforce  
**Date:** 2/6/2023 5:17:38 PM  
**Status:**  
**Color:** ■  
**Layer:**  
**Space:**

Clarify what "planned" improvements mean. Staff is assuming "Planned" are proposed improvements constructed with filing 1.



**Subject:** Callout  
**Page Label:** 17  
**Lock:** Unlocked  
**Author:** dsdlaforce  
**Date:** 2/9/2023 10:08:15 AM  
**Status:**  
**Color:** ■  
**Layer:**  
**Space:**

Add a reference to the Drainage Letter for the Underground Detention per (PCD File No CDR232)

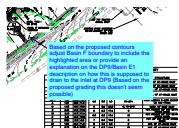


**Subject:** Text Box  
**Page Label:** 9  
**Lock:** Unlocked  
**Author:** dsdlaforce  
**Date:** 2/9/2023 10:58:23 AM  
**Status:**  
**Color:** ■  
**Layer:**  
**Space:**

Provide narrative for DP 6.5, DP 8, DP 9 and DP 12.



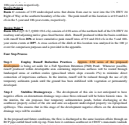
**Subject:** Polygon  
**Page Label:** [1] DRAINAGE  
**Lock:** Unlocked  
**Author:** dsdlaforce  
**Date:** 2/9/2023 10:58:47 AM  
**Status:**  
**Color:** ■  
**Layer:**  
**Space:**




**Subject:** Callout  
**Page Label:** [1] DRAINAGE  
**Lock:** Unlocked  
**Author:** dsdlaforce  
**Date:** 2/9/2023 11:10:54 AM  
**Status:**  
**Color:** ■  
**Layer:**  
**Space:**

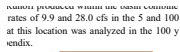
Based on the proposed contours adjust Basin F boundary to include the highlighted area or provide an explanation on the DP9/Basin E1 description on how this is supposed to drain to the inlet at DP9 (Based on the proposed grading this doesn't seem possible)

Glenn Reese - EPC Stormwater (6)




**Subject:** SW - Highlight  
**Page Label:** 9  
**Lock:** Unlocked  
**Author:** Glenn Reese - EPC Stormwater  
**Date:** 2/2/2023 12:19:00 PM  
**Status:**  
**Color:**   
**Layer:**  
**Space:**

Approx. 2.54 acres of the proposed developmen




- Approx. 2.54 acres of the proposed retention (FSD) Pond. Whenever possible impervious surfaces will be routed through a storm sewer to minimize direct

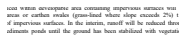
**Subject:** SW - Textbox with Arrow  
**Page Label:** 9  
**Lock:** Unlocked  
**Author:** Glenn Reese - EPC Stormwater  
**Date:** 2/2/2023 12:19:38 PM  
**Status:**  
**Color:**   
**Layer:**  
**Space:**

Clarify that this being done in Filing 1.




**Subject:** SW - Highlight  
**Page Label:** 9  
**Lock:** Unlocked  
**Author:** Glenn Reese - EPC Stormwater  
**Date:** 2/2/2023 12:22:38 PM  
**Status:**  
**Color:**   
**Layer:**  
**Space:**

In the interim, runoff will be reduced through the use of (4) temporary sediments ponds

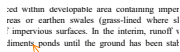


**Stabilize Drainageways** – The development of this site is not a acts on downstream drainage ways since flows released will be below the site proposes four temporary sedimentation ponds, before emptying corner of the site and onto an adjacent undeveloped property ensures that in this stage of the development negative effects on will be avoided.


and future conditions, the flow is discharged to the same location still lined with rip rap. From here it continues southwest in CDOT's reach to Peterson Road. It is then conveyed to the other side of the road via a 36" CMP culvert. The drainage continues westward in the r

**Subject:** SW - Highlight  
**Page Label:** 9  
**Lock:** Unlocked  
**Author:** Glenn Reese - EPC Stormwater  
**Date:** 2/2/2023 12:23:39 PM  
**Status:**  
**Color:**   
**Layer:**  
**Space:**

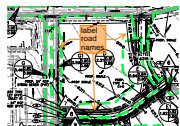
proposes four temporary sedimentation ponds



**Stabilize Drainageways** - The development is on downstream drainage ways since flows at the site proposes four temporary sedimentation property corner of the site and onto an adjacent is ensures that in this stage of the development

**Subject:** SW - Textbox with Arrow  
**Page Label:** 9  
**Lock:** Unlocked  
**Author:** Glenn Reese - EPC Stormwater  
**Date:** 2/2/2023 12:23:43 PM  
**Status:**  
**Color:**   
**Layer:**  
**Space:**

Show location on plans

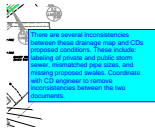


**Subject:** SW - Textbox with Arrow  
**Page Label:** [1] DRAINAGE  
**Lock:** Unlocked  
**Author:** Glenn Reese - EPC Stormwater  
**Date:** 2/2/2023 12:30:35 PM  
**Status:**  
**Color:** ■  
**Layer:**  
**Space:**

label road names



## lpackman (12)



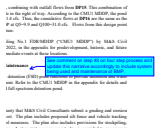
**Subject:** Text Box  
**Page Label:** [1] DRAINAGE  
**Lock:** Unlocked  
**Author:** lpackman  
**Date:** 1/31/2023 2:57:15 PM  
**Status:**  
**Color:** ■  
**Layer:**  
**Space:**

There are several inconsistencies between these drainage map and CDs proposed conditions. These include: labeling of private and public storm sewer, mismatched pipe sizes, and missing proposed swales. Coordinate with CD engineer to remove inconsistencies between the two documents.



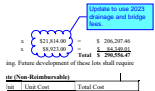
**Subject:** Cloud+  
**Page Label:** 10  
**Lock:** Unlocked  
**Author:** lpackman  
**Date:** 2/1/2023 1:06:29 PM  
**Status:**  
**Color:** ■  
**Layer:**  
**Space:**

Update entire section to discuss the proposed underground water quality system. Include information on TSS removal and/or WQCV, whichever is being used to meet WQ criteria. For TSS information make sure to include provided rate vs what is required per criteria. Include project number and name for submitted deviation request and cdr project.



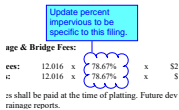
**Subject:** Callout  
**Page Label:** 15  
**Lock:** Unlocked  
**Author:** lpackman  
**Date:** 2/1/2023 1:08:19 PM  
**Status:**  
**Color:** ■  
**Layer:**  
**Space:**

See comment on step #3 on four step process and update this narrative accordingly to include system being used and maintenance of BMP.



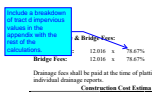
**Subject:** Cloud+  
**Page Label:** 16  
**Lock:** Unlocked  
**Author:** lpackman  
**Date:** 2/1/2023 1:17:16 PM  
**Status:**  
**Color:** ■  
**Layer:**  
**Space:**

Update to use 2023 drainage and bridge fees.



**Subject:** Cloud+  
**Page Label:** 16  
**Lock:** Unlocked  
**Author:** lpackman  
**Date:** 2/1/2023 1:30:35 PM  
**Status:**  
**Color:** ■  
**Layer:**  
**Space:**

Update percent impervious to be specific to this filing.



**Subject:** Callout  
**Page Label:** 16  
**Lock:** Unlocked  
**Author:** lpackman  
**Date:** 2/1/2023 1:54:59 PM  
**Status:**  
**Color:** ■  
**Layer:**  
**Space:**

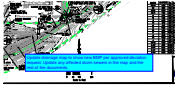
Include a breakdown of tract d impervious values in the appendix with the rest of the calculations.

Update report contents to change any mention of the FSD pond to the new BMP that is being used throughout the report.

PR

**Subject:** Text Box  
**Page Label:** 4  
**Lock:** Unlocked  
**Author:** lpackman  
**Date:** 2/1/2023 2:01:38 PM  
**Status:**  
**Color:** ■  
**Layer:**  
**Space:**

Update report contents to change any mention of the FSD pond to the new BMP that is being used throughout the report.



**Subject:** Text Box  
**Page Label:** [1] DRAINAGE  
**Lock:** Unlocked  
**Author:** lpackman  
**Date:** 2/1/2023 2:12:40 PM  
**Status:**  
**Color:** ■  
**Layer:**  
**Space:**

Update drainage map to show new BMP per approved deviation request. Update any affected storm sewers in the map and the rest of the documents.

Item	Quantity	Unit	Price	Total
1.00	1.00	1.00	1.00	1.00
2.00	2.00	2.00	2.00	2.00
3.00	3.00	3.00	3.00	3.00
4.00	4.00	4.00	4.00	4.00
5.00	5.00	5.00	5.00	5.00
6.00	6.00	6.00	6.00	6.00
7.00	7.00	7.00	7.00	7.00
8.00	8.00	8.00	8.00	8.00
9.00	9.00	9.00	9.00	9.00
10.00	10.00	10.00	10.00	10.00

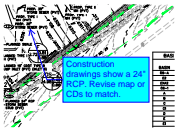
**Subject:** Callout  
**Page Label:** 16  
**Lock:** Unlocked  
**Author:** lpackman  
**Date:** 2/1/2023 3:26:24 PM  
**Status:**  
**Color:** ■  
**Layer:**  
**Space:**

Add in this narrative that tracts B and C will not be included in the drainage fee and will be assessed in the future.



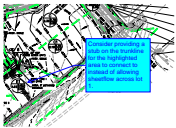
**Subject:** Callout  
**Page Label:** 1  
**Lock:** Unlocked  
**Author:** lpackman  
**Date:** 2/2/2023 12:34:19 PM  
**Status:**  
**Color:** ■  
**Layer:**  
**Space:**

EPC's EDARP File Number: SF2238 (with no dashes or extras zeros or extra spaces in the file number)



**Subject:** Callout  
**Page Label:** [1] DRAINAGE  
**Lock:** Unlocked  
**Author:** lpackman  
**Date:** 2/6/2023 5:06:45 PM  
**Status:**  
**Color:** ■  
**Layer:**  
**Space:**

Construction drawings show a 24" RCP. Revise map or CDs to match.



**Subject:** Callout  
**Page Label:** [1] DRAINAGE  
**Lock:** Unlocked  
**Author:** lpackman  
**Date:** 2/9/2023 1:19:18 PM  
**Status:**  
**Color:** ■  
**Layer:**  
**Space:**

Consider providing a stub on the trunkline for the highlighted area to connect to instead of allowing sheetflow across lot 1.