

ADD25292
PLAT 3446
RS5000
APPROVED 128 SQ FT
DECK

Total Sq ft.
128 sq ft.

APPROVED
Plan Review
06/09/2025 10:22:29 AM
dsd hills

EPC Planning & Community
Development Department

Not Required
BESQCP

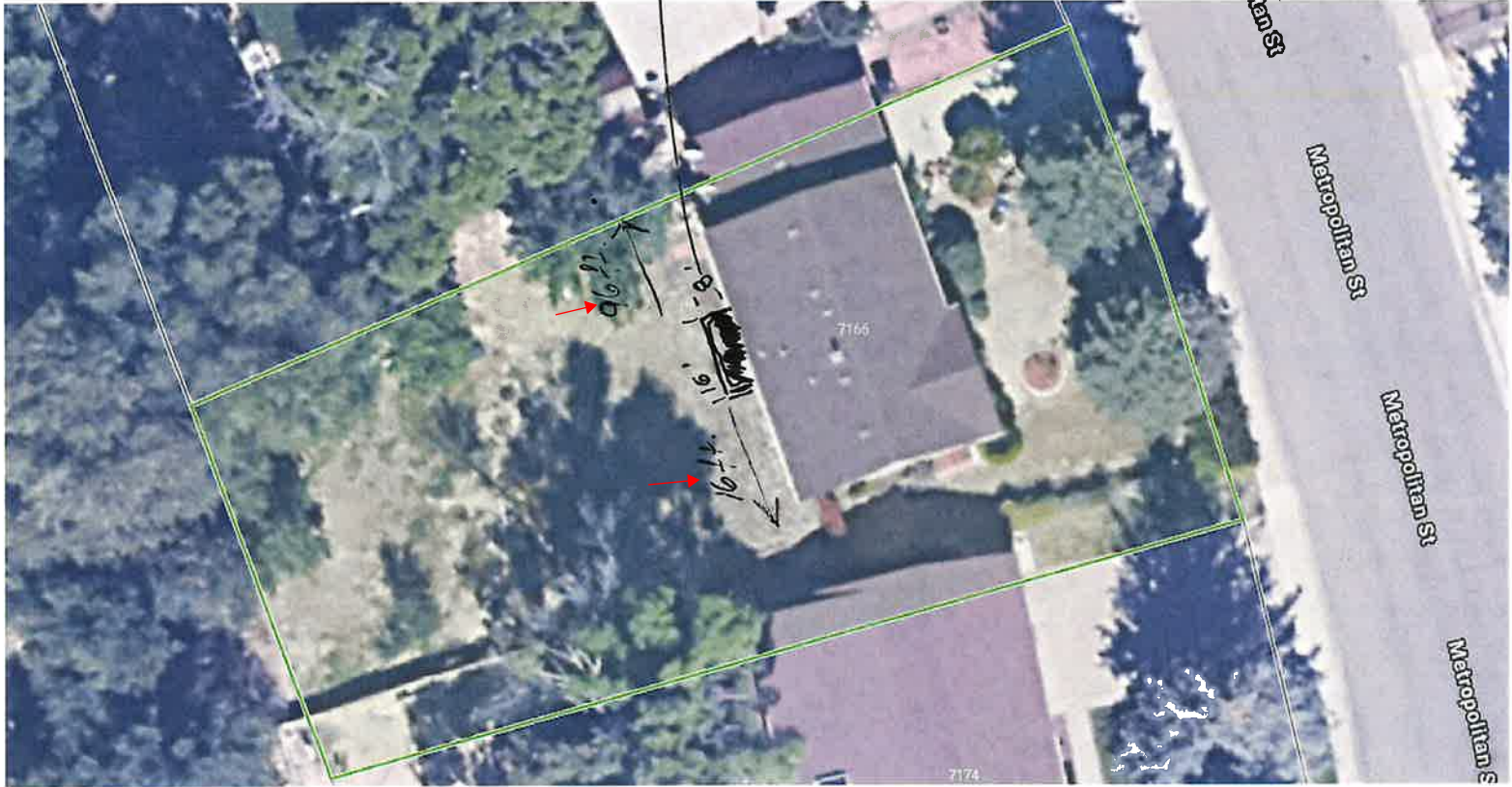
06/09/2025 10:22:51 AM
dsd hills

EPC Planning & Community
Development Department

ANY APPROVAL GIVEN BY
EL PASO COUNTY
DOES NOT OBVIATE THE NEED
TO COMPLY WITH ANY LOCAL,
FEDERAL, STATE OR LOCAL
LAW AND/OR REGULATION.

Planning & Community Development Department
approves all development applications with all
applicable rules on the record plan.
An accurate permit must be granted by the
Planning & Community Development Department
prior to the establishment of any driveway onto a
County road.
Discharge of discharge of any drainage way
is not permitted without approval of the
Planning & Community Development Department.

It is the owner's responsibility to
coordinate with assessment holders
to avoid impact to utilities that
may be located on the assessment.



5519412017
7166 METROPOLITAN ST

Zoning:
RS-5000 CAD-O

Plat No:
R03446

Legal Description:
LOT 23 EX SELY 105 FT BLK 1 WIDEFIELD COUNTRY CLUB
HEIGHTS EAST