

MP06001

MP-06-001

Airport Master Plan

El Paso County Planning
Commission

August 15, 2006

Purpose of a Master Plan

State statutes state that...

- ...[t]he county or regional master plan shall be made with the general purpose of guiding and accomplishing a coordinated, adjusted, and harmonious development of the county or region which, in accordance with present and future needs and resources, will best promote the health, safety, morals, order, convenience, prosperity, or general welfare of the inhabitants, as well as efficiency and economy in the process of development... (CRS 30-28-107)

El Paso County Policy Plan

- **POLICY 5.1.12**
- Discourage or prevent land uses which threaten the long-term operating viability of critical infrastructure, such as the airport and industrial areas which must grow to accommodate new primary jobs for the County's growing population.

City of Colorado Springs Airport Master Plan

Purpose:

The Airport master plan defines the type and extent of development activities necessary for the Airport to meet community's current and projected aviation demand through 2017.

City of Colorado Springs

Airport Master Plan

Goals:

- To provide a framework for long-range planning (2017)
- To graphically present preferred airport development concepts
- To define the purpose and need for development projects
- To comply with all applicable FAA requirements

City of Colorado Springs Airport Master Plan

Goals cont.,:

- To enable the airport to achieve its mission
- To ensure compatible land use development
- To identify facility requirements for all airport users - airlines, cargo, general aviation, and travelers

City of Colorado Springs

FAR Part 150 Study

Purpose:

To develop a balanced and cost-effective plan for reducing current noise impacts from an airport's operations, where practical, and to limit additional impacts in the future.

City of Colorado Springs

FAR Part 150 Study

Goals:

- To reduce, where feasible, existing and forecasted noise levels over existing noise-sensitive land uses;
- To reduce new noise-sensitive developments near the airport;
- To mitigate, where feasible, adverse impacts in accordance with Federal guidelines;

City of Colorado Springs

FAR Part 150 Study

Goals cont.,

- To provide mitigation measures that are sensitive to the needs of the community and its stability;
- To be consistent, where feasible, with local land use planning and development policies.

History of Existing Overlay

- Current base regulations adopted in 1968, and modified several times
- MP 88-002A Part 150 Study
- MP 90-001 Part 150 Noise contours (1993) adopted by the Planning Commission
- Airport changes over time
 - Terminal relocation
 - New runway
 - Enplanements doubled
 - Growth has increased
 - Fleet mix has changed

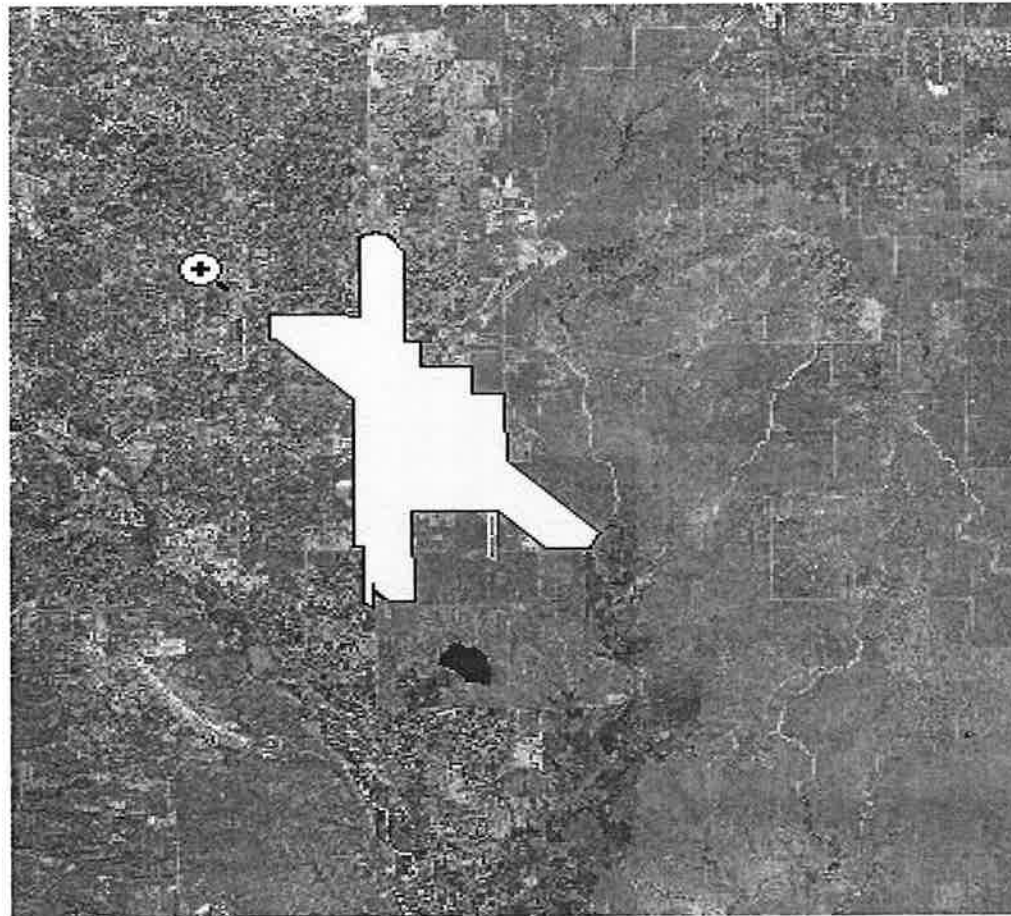
Airport Regulation Revision Approach

1. Airport Master Plan, including Part 77 and Part 150 studies delimits the impacted or protected areas
2. Legislative effort to apply the zoning overlay to the ground
3. Land Development Code provides the regulations to implement the Master Plan as it applies to land within the overlay

Proposed Overlay Zone Components

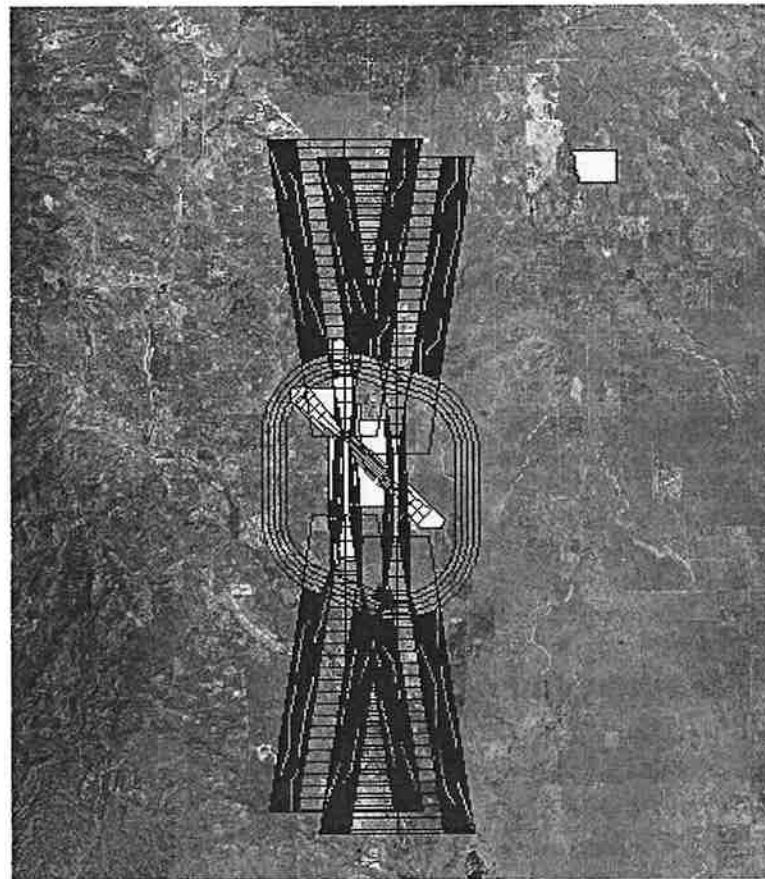
- FAA Part 77 Instrument Landing Surfaces Map
- ANAV: Ground area under Part 77 surfaces, for which an aviation easement must be recorded
- Noise Contours: Residential uses prohibited in areas with greater than 65 dnl
- Runway Protection Zones (RPZ): adjacent to runways; significant height limitations
- Accident Potential Zones (APZ): use limitations
- Code Text

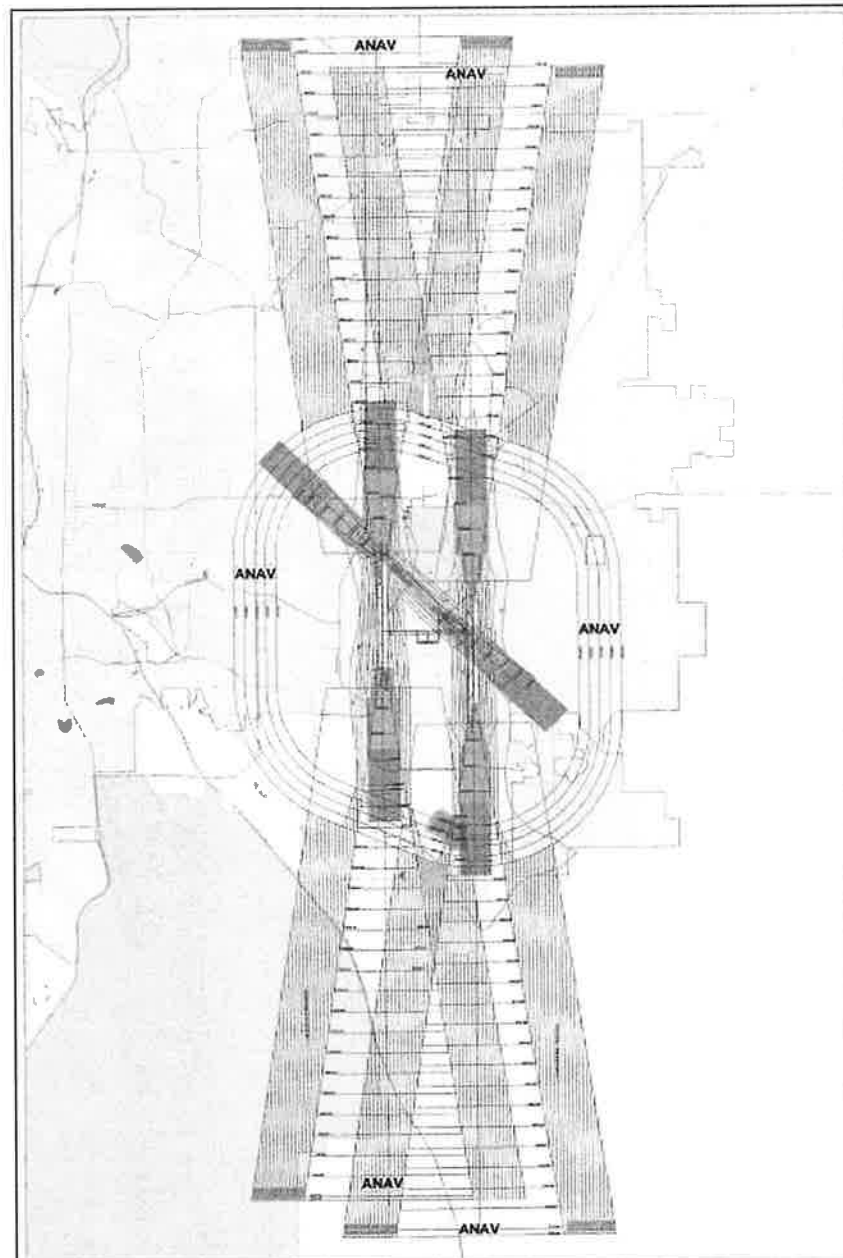
Current Airport Overlay



Boundaries of Overlay-ANAV

- Existing
Overlay boundary
In yellow





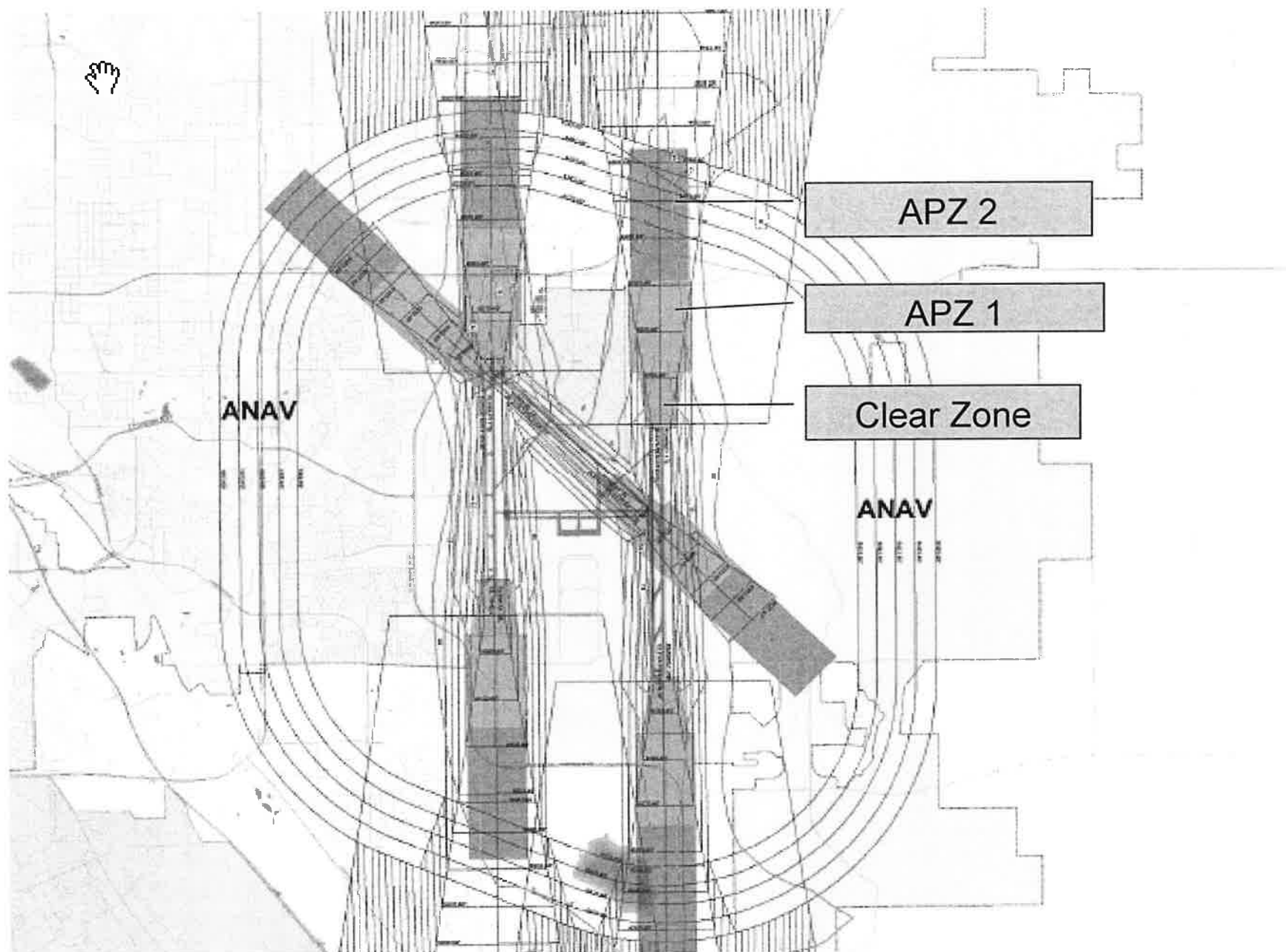
This map was prepared by the Colorado Springs Airport Authority for the purpose of illustrating the Accident Potential Zones (APZ) and Safety Protection Zones (SPZ) for the Colorado Springs Airport. The map is based on the latest available data and is subject to change without notice. The map is not to be used for any other purpose without the express written consent of the Colorado Springs Airport Authority.

Colorado Springs Airport

Accident Potential Zones	
APZ 1	Wake Concure
APZ 2	Part 77 Exclusion
APZ 3	
Safety Protection Zones	

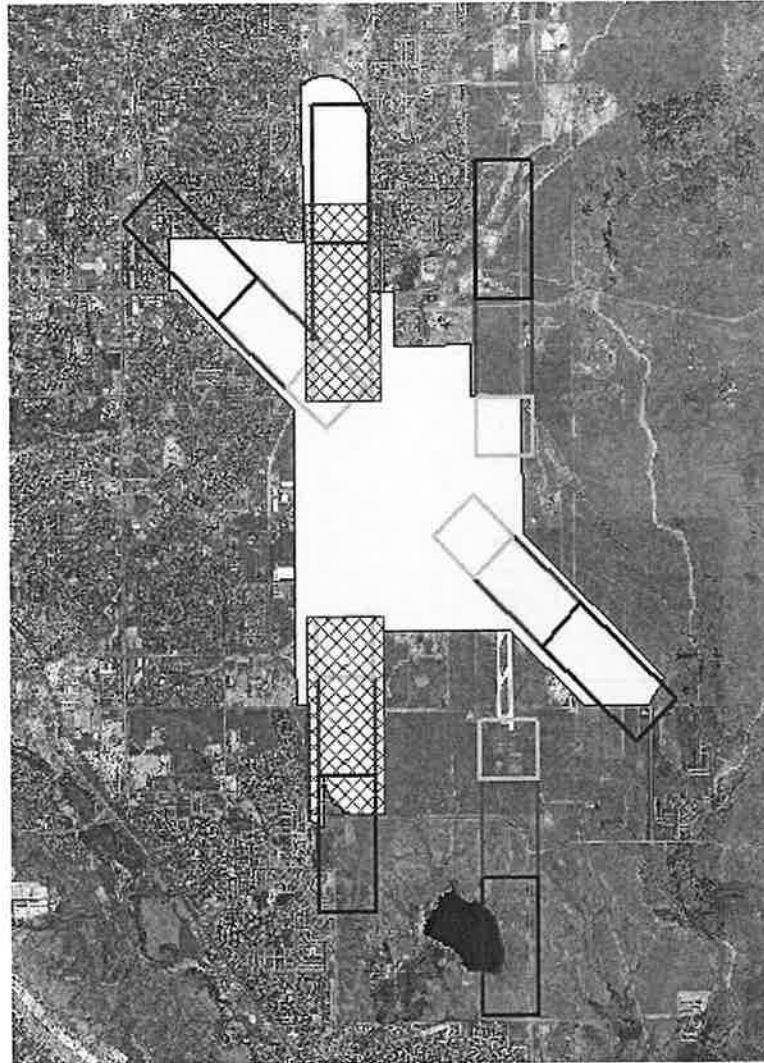


March 6, 2006



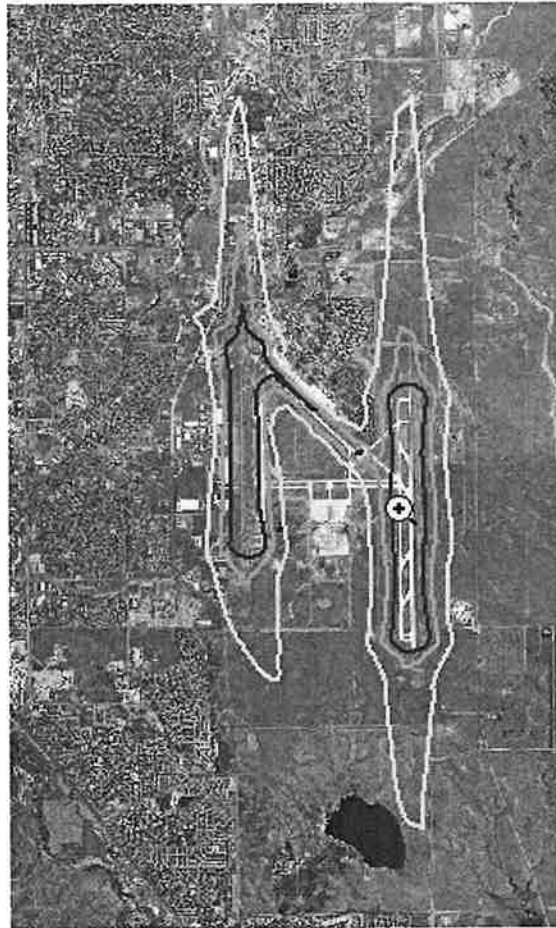
APZ 1 and 2

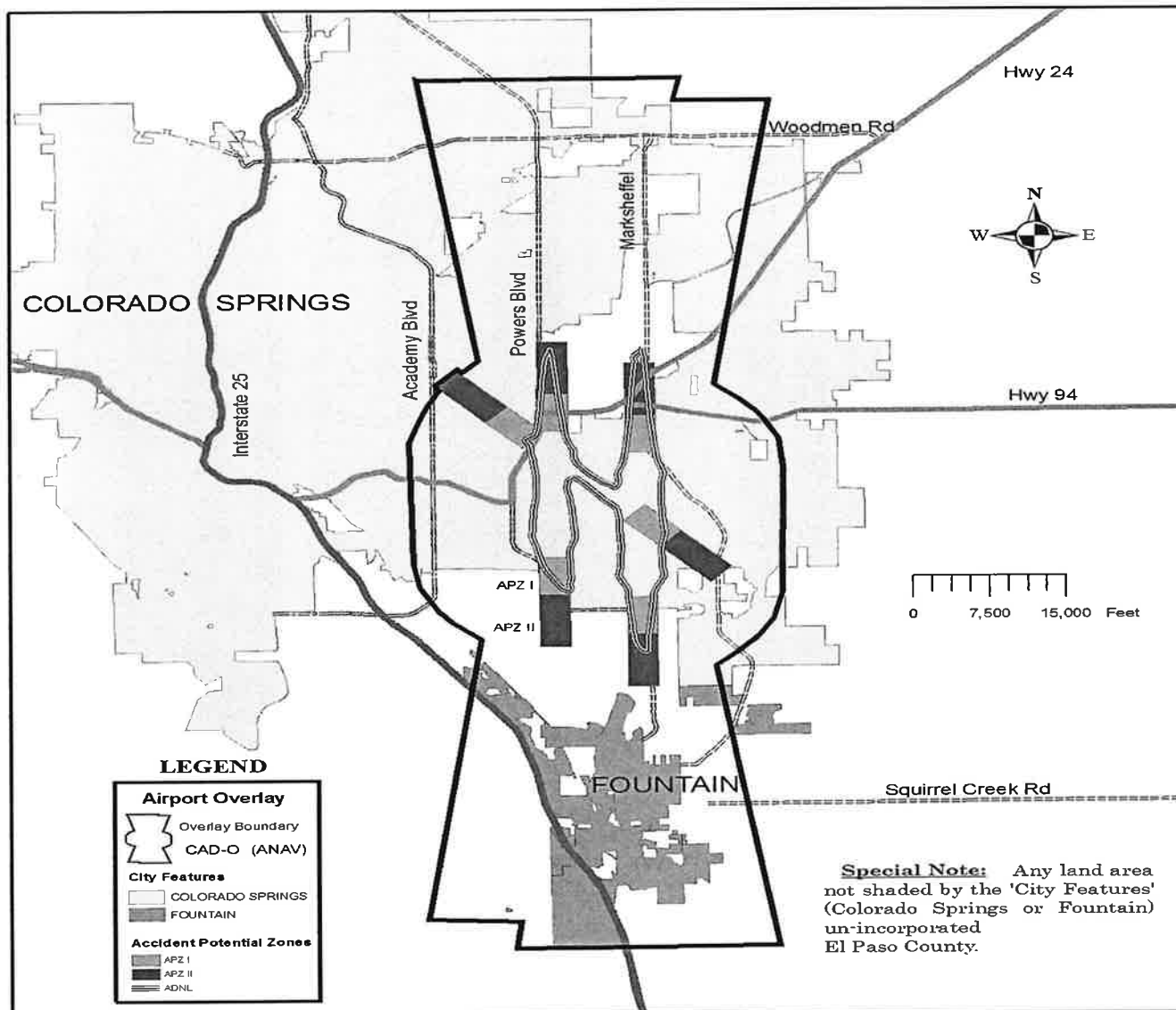
- Yellow area
Is current
Overlay
- Hatched area
Is current critical
Sub-zone



Noise Contours

- Residential
Prohibited inside of
Yellow boundaries





Colorado Springs Airport Overlay Map