

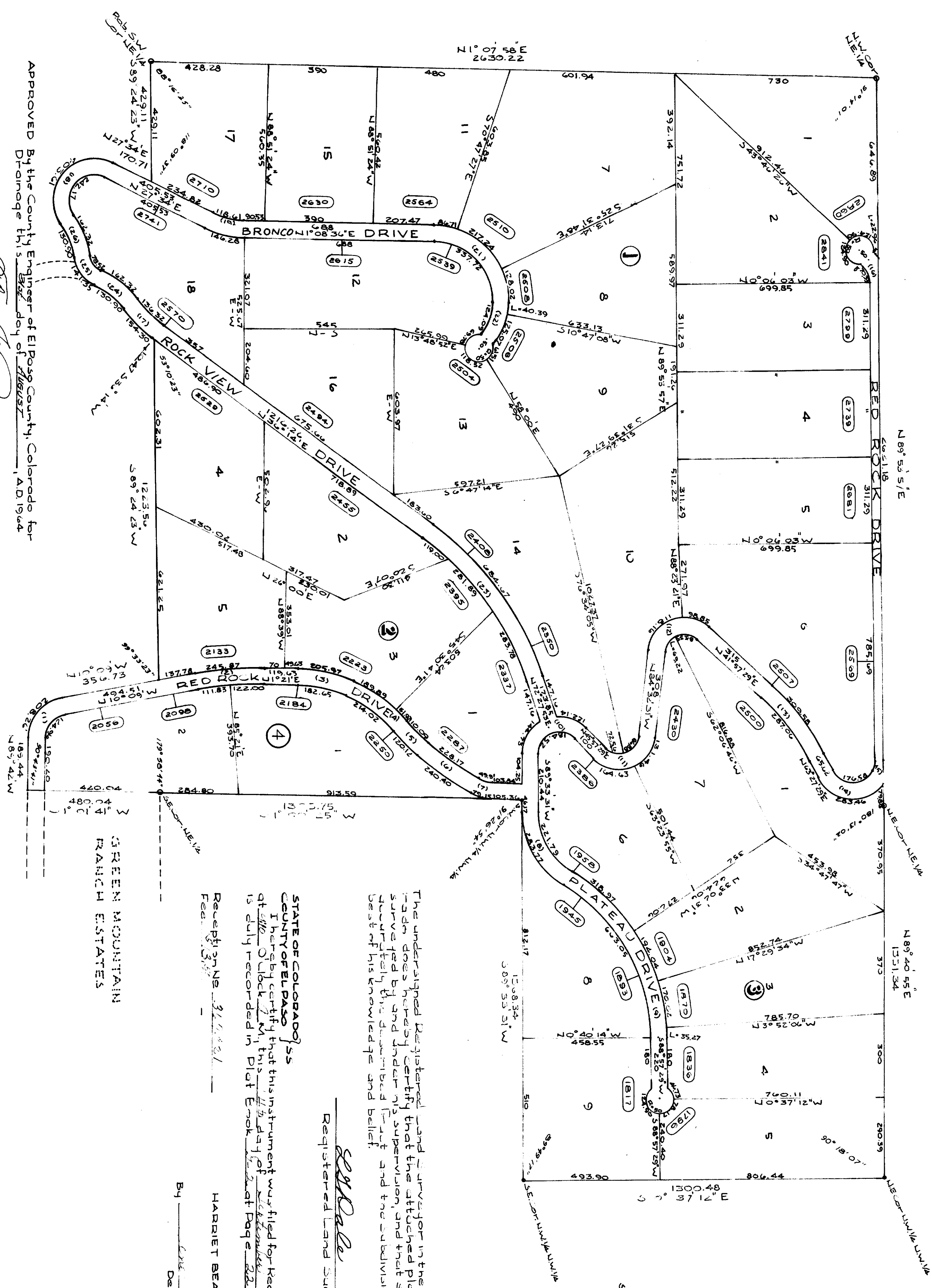
GREEN MOUNTAIN RANCH ESTATES

FILING NO. 2

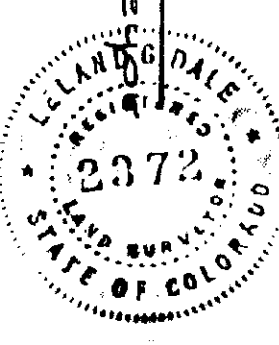
EL PASO COUNTY, COLORADO
COLORADO ENGINEERS

SHEET 1 OF 2

2389



The undersigned Registered Surveyor in the State of Colorado does hereby certify that the attached plat was surveyed by and under his supervision, and that said plat shows accurately the described tract and the subdivision thereof to the best of his knowledge and belief.



STATE OF COLORADO
COUNTY OF EL PASO
I hereby certify that this instrument was filed for record in my Office at El Paso, Colorado, this 11th day of September, A.D. 1964, and is duly recorded in Plat Book 22, at Page 22.

HARRIET BEALS, Recorder
By S. P. Pale
Deputy

APPROVED By the County Engineer of El Paso County, Colorado for Drainage this 11th day of August, A.D. 1964.

Thomas J. Swell, County Engineer

APPROVED By the El Paso County Planning Engineer this 14th day of September, A.D. 1964.

Donald B. Davis, County Planning Engineer

APPROVED By the El Paso County Planning Commission this 11th day of September, A.D. 1964.

McQuinn, Chairman

