

POND 3 OUTLET STRUCTURE NOTES:

- ORIFICE PLATE:**
- PROVIDE CONTINUOUS NEOPRENE GASKET MATERIAL BETWEEN THE ORIFICE PLATE AND CONCRETE AND BETWEEN THE RESTRICTOR PLATE AND CONCRETE.
 - BOLT PLATE TO CONCRETE 12" MAX. ON CENTER.
- TRASH RACKS:**
- TRASH RACKS SHALL BE 1/2" SCH.40 STEEL PIPE, GALVANIZED, @ 6" CENTERS. SUPPORT BARS SHALL BE 1/2"x2" STEEL RECTANGULAR BARS, GALVANIZED, @ 36". ALL TRASH RACKS SHALL BE MOUNTED USING STAINLESS STEEL HARDWARE.
 - REMOVABLE TRASH RACK SECTIONS SHALL BE MOUNTED USING STAINLESS STEEL HARDWARE AND PROVIDED WITH HINGED & LOCKABLE OR BOLTABLE ACCESS PANELS AS SHOWN ON THE PLANS.
 - STEEL TRASH RACKS SHALL BE HOT DIP GALVANIZED AND MAY BE HOT POWDER COATED AFTER GALVANIZING.
 - STRUCTURAL STEEL FOR GRATES, ORIFICE PLATES, AND BARS SHALL BE GALVANIZED AND SHALL BE IN ACCORDANCE WITH CDOT STANDARD SPECIFICATIONS, SUBSECTION 712.06.
 - ALL HARDWARE, BOLTS, AND FASTENERS SHALL BE STAINLESS STEEL.
 - CONTRACTOR SHALL SUBMIT SHOP DRAWINGS FOR ALL PLATES AND GRATING FOR ENGINEER'S APPROVAL PRIOR TO CONSTRUCTION.

This is the new Stage=0ft point for the MHFD-Detention calcs. So the other two inputs for 'Stage of Orifice Centroid' will all need to be adjusted accordingly in that spreadsheet.

In this specific situation, as the AB pipe out is above stage zero, and therefore, the first hole will have zero outflow until WSEL = Invert out = 49.67 as modeled in the AB MHFD Detention workbook.



ENGINEER'S STATEMENT

PREPARED UNDER MY DIRECT SUPERVISION AND ON BEHALF OF JR ENGINEERING

MIKE A. BRAMLETT, P.E.
 COLORADO P.E. 32314
 FOR AND ON BEHALF OF JR ENGINEERING, LOCAL ENGINEER

DATE: 2/15/21

UNTIL SUCH TIME AS THESE DRAWINGS ARE APPROVED BY THE APPROPRIATE REVIEWING AGENCIES, OR ENGINEERING APPROVES THEIR USE, THESE DRAWINGS ARE DESIGNATED BY WRITTEN AUTHORIZATION.

PREPARED FOR: MONUMENT HILL CM LLC
 1864 WOODMOOR DR, STE 100
 COLORADO SPRINGS, CO 80920
 ATTN: JOE DESJARDIN
 (719) 476-0800
 JDESJARDIN@PROTERRACO.COM

J.R. ENGINEERING
 A Westman Company
 Centennial 300-740-9383 • Colorado Springs 719-583-2583
 Fort Collins 970-491-9888 • www.jrengineering.com

BY	DATE	NO.	REV.	DESCRIPTION

H-SCALE: 3/8"=1"
 V-SCALE: 3/8"=1"
 DATE: 12/15/21
 DESIGNED BY: GAG
 DRAWN BY: GAG
 CHECKED BY:

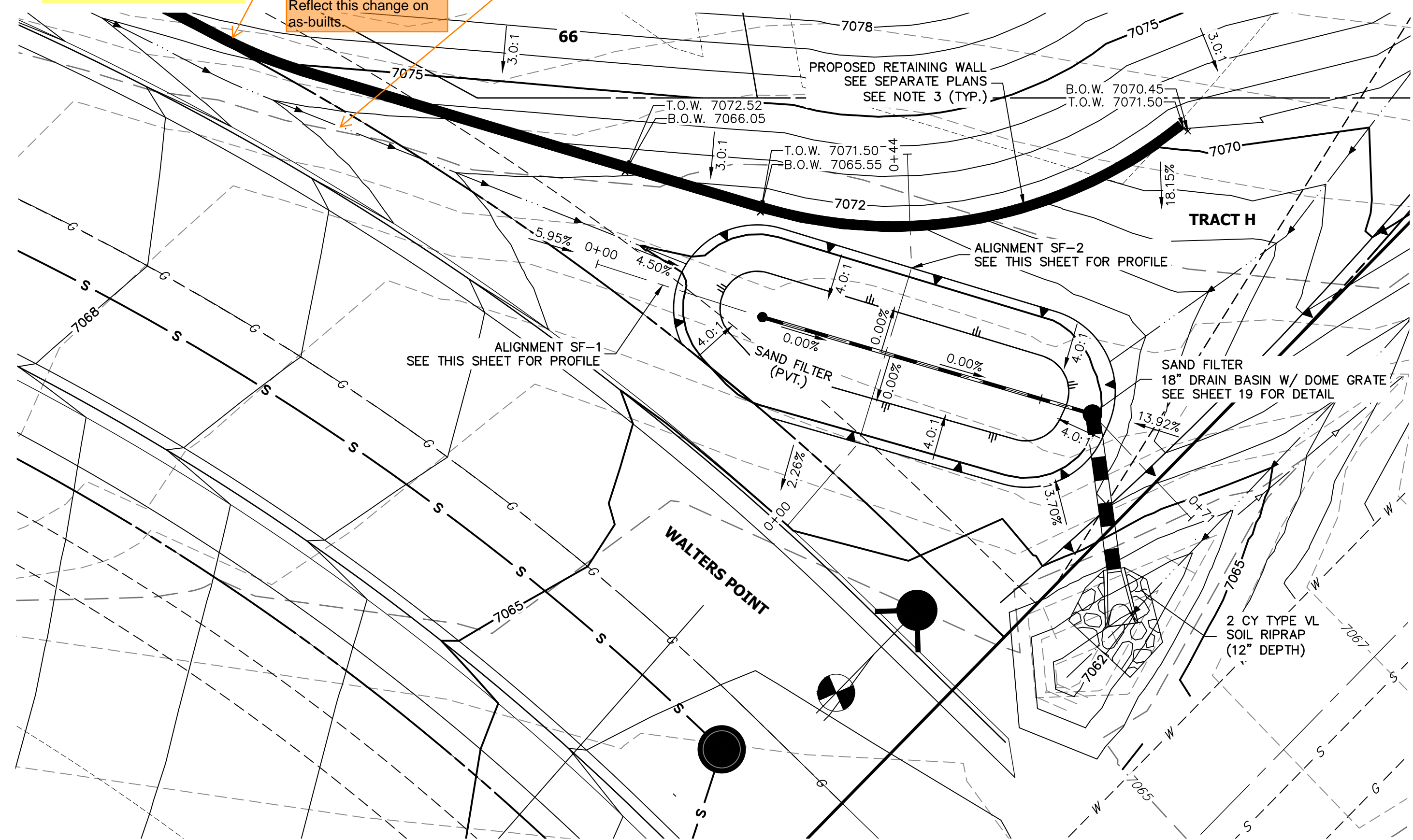
CLOVERLEAF FILING 2
 POND PLANS AND DETAILS
 SHEET 19 OF 28
 JOB NO. 25158.01

This wall was built per plan. This documents is not intended to be an "as-built" for the retaining wall.

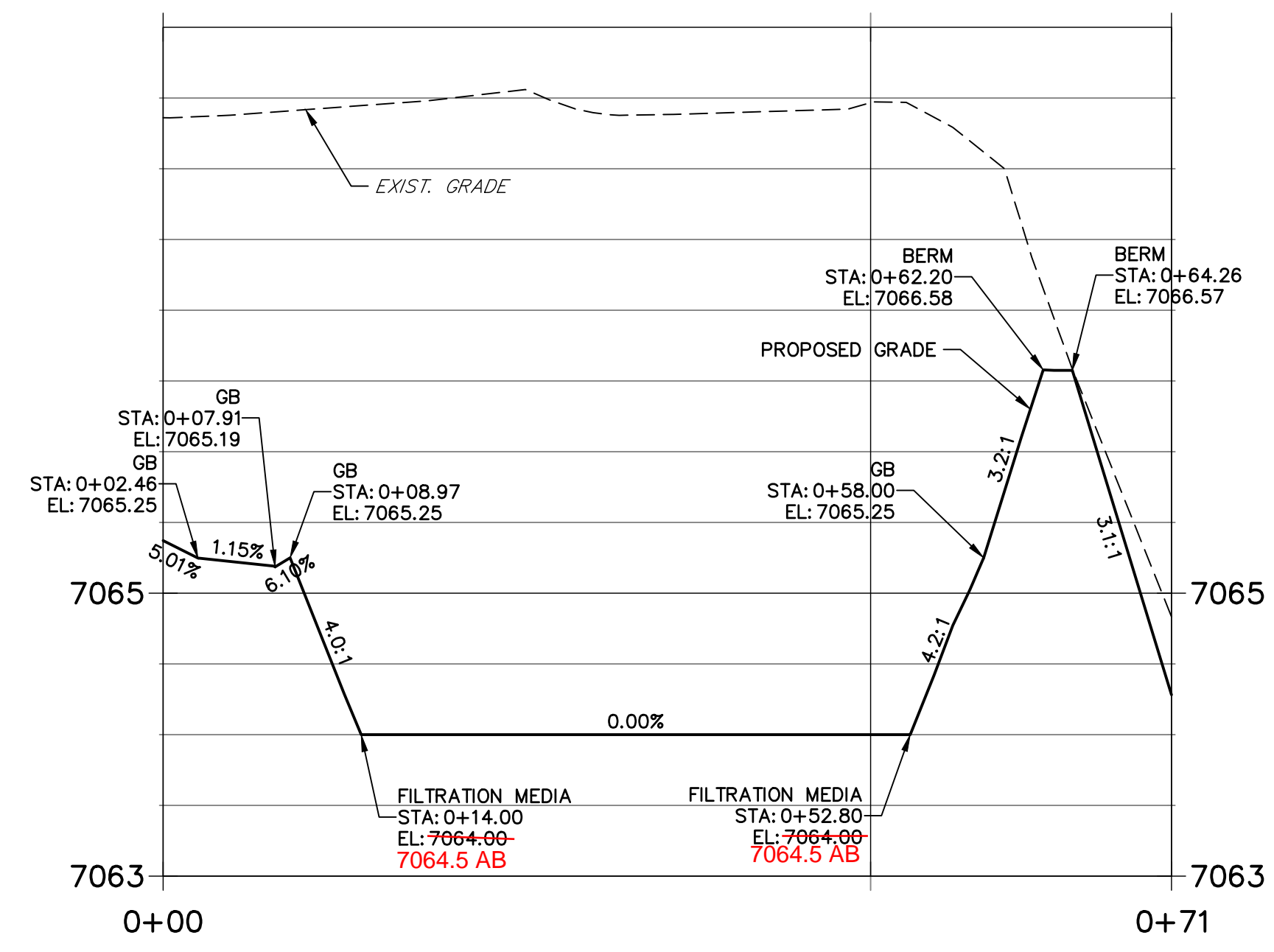
Unresolved previous comment: Retaining wall actually installed closer to street than shown on plan. Reflect this change on as-builts.

Unresolved previous comment: Ditch not installed per plan

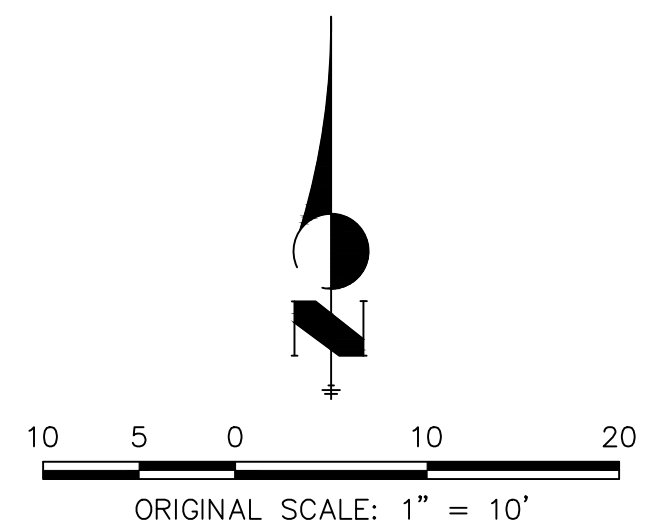
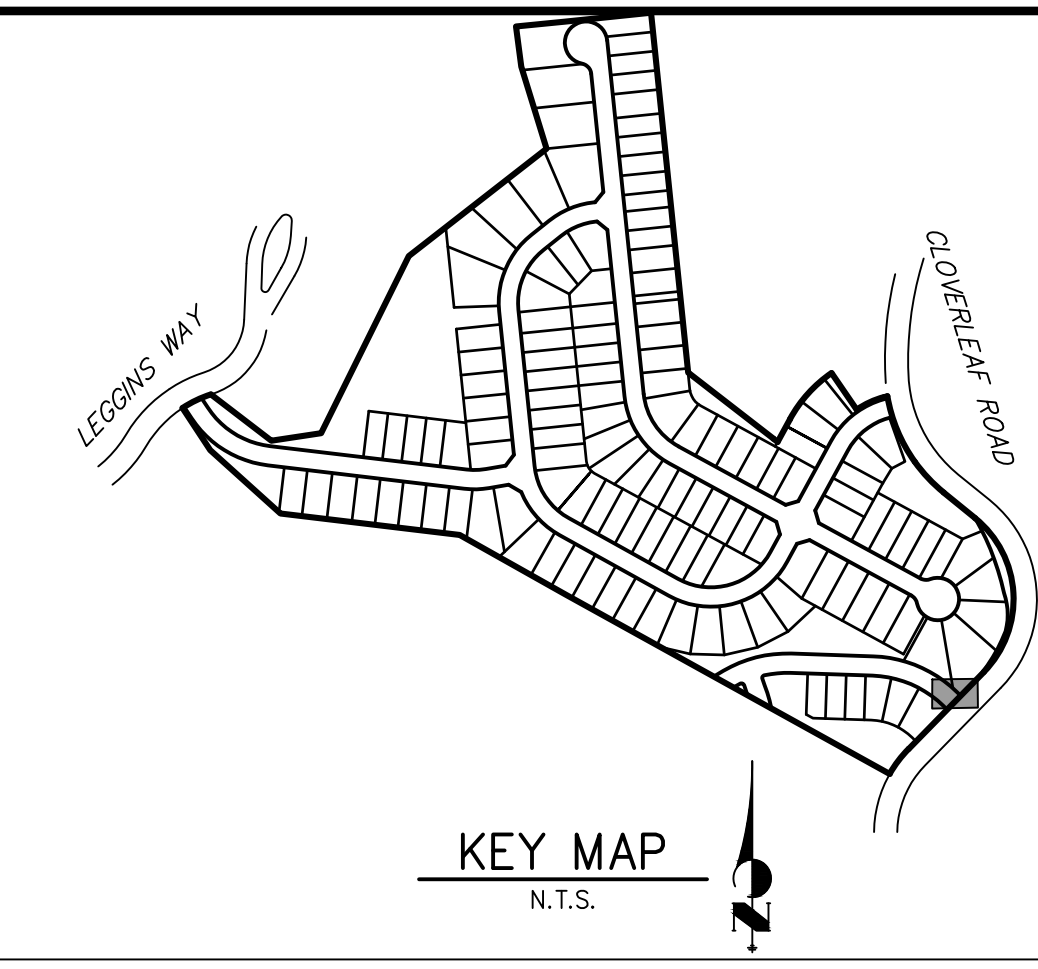
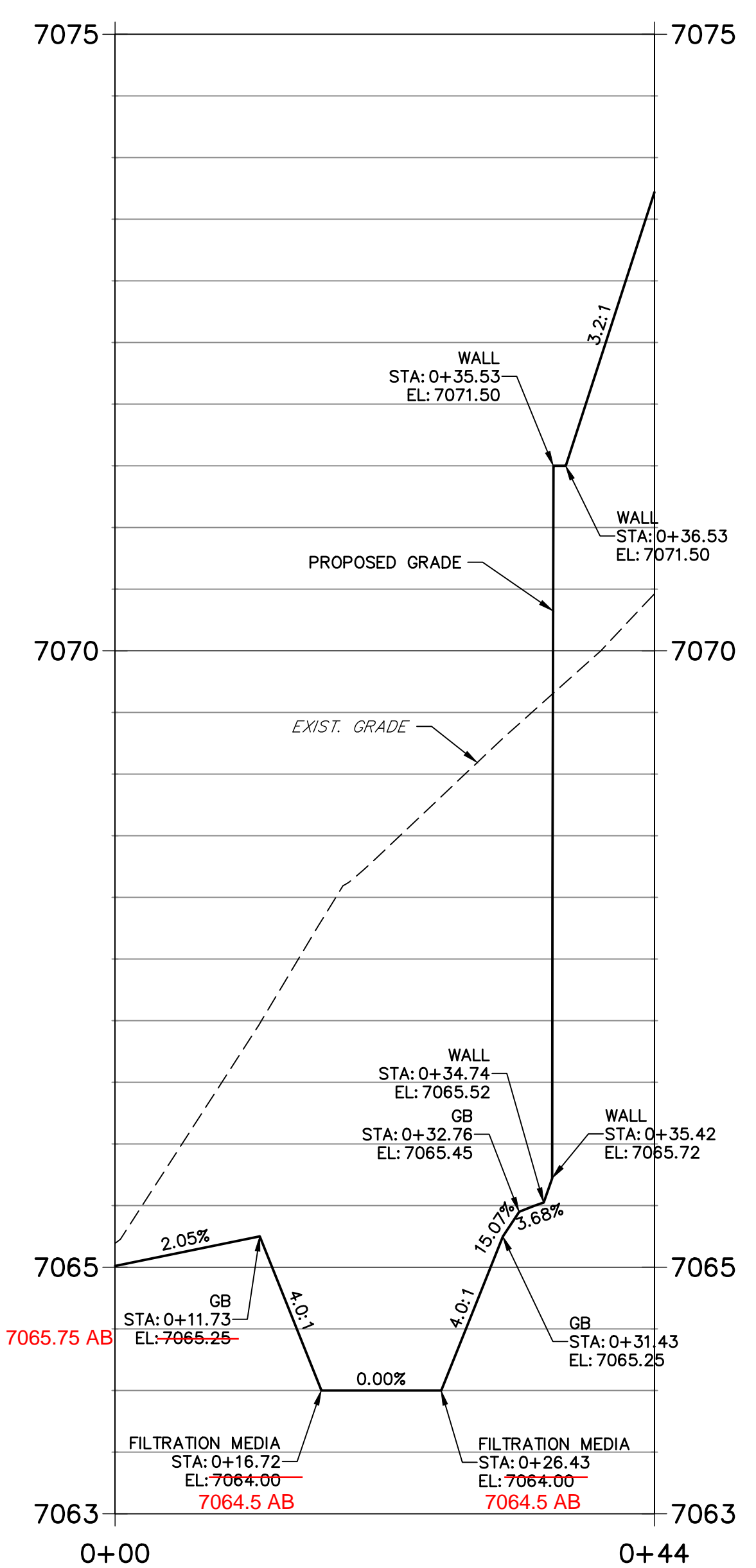
This swale has been installed per plan and was confirmed by a field visit, December 2023.



**POND SF-1 PROFILE
STA 0+00.00 TO 0+71.26**



**POND SF-2 PROFILE
STA 0+00.00 TO 0+43.72**



NOTES

- ALL PROPOSED POND IMPROVEMENTS ARE PRIVATE UNLESS OTHERWISE NOTED.
- SEE SHEETS 3-8 FOR PROPOSED STORM SEWER DESIGN.
- CLOVERLEAF METROPOLITAN DISTRICT WILL OWN AND MAINTAIN ALL RETAINING WALLS WITHIN TRACTS. WALLS ON LOTS WILL BE OWNED AND MAINTAINED BY THE INDIVIDUAL LOT OWNER.



Know what's below.
Call before you dig.

THE LOCATIONS OF EXISTING ABOVE GROUND AND UNDERGROUND UTILITIES ARE SHOWN IN AN APPROXIMATE WAY ONLY. THE CONTRACTOR SHALL DETERMINE THE EXACT LOCATION OF ALL EXISTING UTILITIES BEFORE COMMENCING WORK. THE CONTRACTOR SHALL BE FULLY RESPONSIBLE FOR ANY AND ALL DAMAGES WHICH MIGHT BE CAUSED BY HIS FAILURE TO EXACTLY LOCATE AND PRESERVE ANY AND ALL ABOVE GROUND AND UNDERGROUND UTILITIES.

AS-BUILTS
05/24/2023
SF-21-023



EPC PCD 1/31/22

ENGINEER'S STATEMENT

PREPARED UNDER MY DIRECT SUPERVISION AND ON BEHALF OF JR ENGINEERING

Mike A. Bramlett

MIKE A. BRAMLETT, P.E.
COLORADO P.E. 32314

DATE: 2/15/21

UNTIL SUCH TIME AS THESE DRAWINGS ARE APPROVED BY THE APPROPRIATE REVIEWING AGENCIES, JR ENGINEERING APPROVES THEIR USES DESIGNATED BY WRITTEN AUTHORIZATION. PREPARED FOR MONUMENT HILL CM LLC 1864 WOODMOOR DR, STE 100 COLORADO SPRINGS, CO 80920 ATTN: JOE DESJARDIN (719) 476-0800 JDESJARDIN@PROTERRACO.COM	J.R. ENGINEERING A Western Company Centennial 300-740-9888 • Colorado Springs 719-588-2583 Fort Collins 970-491-9888 • www.jrengineering.com	BY	DATE
CLOVERLEAF FILING 2 POND PLANS AND DETAILS	SHEET 24 OF 28 JOB NO. 25158.01	No.	REVISION
		H-SCALE	1"=10'
		V-SCALE	1"=1'
		DATE	12/15/21
DESIGNED BY	GAG	DRAWN BY	GAG
CHECKED BY			

